



Serum Proteomics Identifies Immune Pathways and Candidate Biomarkers of Coronavirus Infection in Wild Vampire Bats

Daniel J. Becker^{1*}, Guang-Sheng Lei², Michael G. Janech^{3,4}, Alison M. Bland^{3,4}, M. Brock Fenton⁵, Nancy B. Simmons⁶, Ryan F. Relich² and Benjamin A. Neely⁷

¹ Department of Biology, University of Oklahoma, Norman, OK, United States, ² Department of Pathology and Laboratory Medicine, School of Medicine, Indiana University, Indianapolis, IN, United States, ³ Hollings Marine Laboratory, Charleston, SC, United States, ⁴ Department of Biology, College of Charleston, Charleston, SC, United States, ⁵ Department of Biology, Western University, London, ON, Canada, ⁶ Department of Mammalogy, Division of Vertebrate Zoology, American Museum of Natural History, New York, NY, United States, ⁷ Chemical Sciences Division, National Institute of Standards and Technology, Charleston, SC, United States

OPEN ACCESS

Edited by:

Tony Schountz,
Colorado State University,
United States

Reviewed by:

Jie Cui,
Institut Pasteur of Shanghai (CAS),
China

Eric Laing,
Uniformed Services University,
United States

*Correspondence:

Daniel J. Becker
danbeck@ou.edu

Specialty section:

This article was submitted to
Virus and Host Immunity,
a section of the journal
Frontiers in Virology

Received: 26 January 2022

Accepted: 02 March 2022

Published: 24 March 2022

Citation:

Becker DJ, Lei G-S, Janech MG, Bland AM, Fenton MB, Simmons NB, Relich RF and Neely BA (2022) Serum Proteomics Identifies Immune Pathways and Candidate Biomarkers of Coronavirus Infection in Wild Vampire Bats. *Front. Virol.* 2:862961. doi: 10.3389/fviro.2022.862961

The apparent ability of bats to harbor many virulent viruses without showing disease is likely driven by distinct immune responses that coevolved with mammalian flight and the exceptional longevity of this order. Yet our understanding of the immune mechanisms of viral tolerance is restricted to a small number of bat–virus relationships and remains poor for coronaviruses (CoVs), despite their relevance to human health. Proteomics holds particular promise for illuminating the immune factors involved in bat responses to infection, because it can accommodate especially low sample volumes (e.g., sera) and thus can be applied to both large and small bat species as well as in longitudinal studies where lethal sampling is necessarily limited. Further, as the serum proteome includes proteins secreted from not only blood cells but also proximal organs, it provides a more general characterization of immune proteins. Here, we expand our recent work on the serum proteome of wild vampire bats (*Desmodus rotundus*) to better understand CoV pathogenesis. Across 19 bats sampled in 2019 in northern Belize with available sera, we detected CoVs in oral or rectal swabs from four individuals (21.1% positivity). Phylogenetic analyses identified all RdRp gene sequences in vampire bats as novel α -CoVs most closely related to known human CoVs. Across 586 identified serum proteins, we found no strong differences in protein composition nor abundance between uninfected and infected bats. However, receiver operating characteristic curve analyses identified seven to 32 candidate biomarkers of CoV infection, including AHSG, C4A, F12, GPI, DSG2, GSTO1, and RNH1. Enrichment analyses using these protein classifiers identified downregulation of complement, regulation of proteolysis, immune effector processes, and humoral immunity in CoV-infected bats alongside upregulation of neutrophil immunity, overall granulocyte activation, myeloid cell responses, and glutathione processes. Such results

denote a mostly cellular immune response of vampire bats to CoV infection and identify putative biomarkers that could provide new insights into CoV pathogenesis in wild and experimental populations. More broadly, applying a similar proteomic approach across diverse bat species and to distinct life history stages in target species could improve our understanding of the immune mechanisms by which wild bats tolerate viruses.

Keywords: proteome, alphacoronavirus, *Desmodus rotundus*, ecoimmunology, biomarker

INTRODUCTION

Bats (Order: Chiroptera) are one of the most speciose mammalian clades (1, 2), and this diversity is matched by an equally high richness of viruses, many of which are zoonotic (3, 4). Bat species are the confirmed reservoir hosts for Hendra and Nipah viruses, lyssaviruses, Marburg virus, and SARS-like coronaviruses (CoVs) (5–8). Yet with few exceptions (e.g., lyssaviruses), these pathogens seem to not cause disease in their bat hosts (9–11). This tolerance of otherwise virulent infections is likely driven by distinct aspects of bat immunity that evolved alongside their unique ability of powered flight and their very long lifespans (12–14). These include but are not limited to constitutive expression of interferons (IFNs) and IFN-stimulated genes (ISGs), robust complement proteins, and a dampened inflammatory response (15–20).

Relationships between bats and CoVs specifically have been of particular interest for zoonotic risk assessment (21, 22). CoVs are RNA viruses found across mammals and birds, with at least seven known human viruses: two and five in the genera *Alphacoronavirus* and *Betacoronavirus* (23, 24). A novel α -CoV with canine origins was recently detected in humans, but its role in zoonotic disease remains unclear (25). CoVs are highly diverse in bats, which are the likely ancestral hosts of α - and β -CoVs (26–28). The evolutionary origins of highly pathogenic CoVs (i.e., SARS-CoV, MERS-CoV, SARS-CoV-2) have also been ascribed to bats, but spillover has typically involved intermediate hosts rather than direct bat-to-human transmission (5, 29, 30).

Our understanding of bat–CoV interactions and the bat immune response to infection remains limited and has stemmed mostly from experimental studies of a few select species, including *Rousettus leschenaulti*, *R. aegyptiacus*, *Artibeus jamaicensis*, and *Eptesicus fuscus* (10, 11, 28, 31, 32). *In vivo* studies have typically found short-term CoV replication and shedding without substantial weight loss or pathology, supporting viral tolerance, although some species seem to entirely resist infection. Tolerance appears driven by innate immune processes, such as increased expression of ISGs, with little adaptive immune response. *In vitro* studies have further supported bat receptor affinity for CoVs (i.e., susceptibility) but little host inflammatory response in bats (10, 11, 16, 33).

Despite the clear insights afforded by experiments, model bat systems are heavily limited by logistical constraints (e.g., necessity for specialized facilities, colony maintenance) and have been mostly focused on frugivorous bats, which are relatively easy to keep in captivity compared to other dietary

guilds (34, 35). Transcriptomics of key tissues (e.g., spleen) has helped advance the field by identifying immune responses to infection in a wider array of species (36–38). However, such approaches are restrictive when lethal bat sampling is limited, such as when working with threatened species, in protected habitats, or in longitudinal studies to assess how these viruses persist in bat populations. Blood transcriptomes overcome such challenges to a degree and are increasingly feasible (39, 40), yet such assays are only informative about the immune response in the blood itself. Proteomics, on the other hand, provides a unique and more nuanced perspective into the immune system, because the blood proteome includes proteins secreted from not only blood cells but also proximal organs such as the liver (41).

Proteomics holds special promise for illuminating the innate and adaptive immune factors involved in bat responses to infection, because it can accommodate the small bat blood volumes typical of field studies (e.g., <10 μ L). Recently, we surveyed the serum proteome of wild vampire bats (*Desmodus rotundus*) (42). Owing to its diet of mainly mammal blood, this species is the primary reservoir host of rabies lyssavirus in Latin America, and alpha- and betacoronaviruses have also been identified in this species (43–46). Using only 2 μ L sera from these small (25–40 gram) bats, we identified 361 proteins across five orders of magnitude, including antiviral and antibacterial components, 20S proteasome complex, and redox activity proteins. Mass spectrometry-based proteomics can thus facilitate the relative quantification of classical immunological proteins while also providing insight into proteins yet to be fully recognized for their importance in resolving viral infection (47–49).

Here, we expand our recent work on serum proteomics in vampire bats in the context of CoV infection. First, by profiling the serum proteome of the same host species in an additional year of study, we provide a more general and comprehensive characterization of the wild bat immune phenotype. Second, owing to changes in regulations for importing vampire bat samples into the United States, we also assess the impact of heat inactivation, a common method of inactivating bat sera (50), on the proteome. Lastly, and most importantly, we assess differences in the serum proteomes of wild bats with and without acute CoV infection. We aimed to identify up- and downregulated immune responses of wild bats to CoV infection, with particular interest in comparisons with results from experimental infections. We also aimed to guide the discovery of candidate serum biomarkers of viral infection. By taking an agnostic approach *via* discovery proteomics (51), such

biomarkers could provide new and mechanistic insight into CoV pathogenesis in wild bats (52).

MATERIALS AND METHODS

Vampire Bat Sampling

As part of an ongoing longitudinal study (53), we sampled vampire bats in April 2019 in the Lamanai Archeological Reserve, northern Belize. This same population was sampled in 2015 for our earlier proteomic analysis (42). For the 19 individuals included in this study, we used a harp trap and mist nets to capture bats upon emergence from a tree roost. All individuals were issued a unique incoloy wing band (3.5 mm, Porzana Inc) and identified by sex, age, and reproductive status. For sera, we collected blood by lancing the propatagial vein with 23-gauge needles followed by collection with heparinized capillary tubes. Blood was stored in serum separator tubes (BD Microtainer) for 10–20 minutes before centrifugation. Following recent CDC guidelines, all sera were inactivated for importation to the United States by heating at 56°C for one hour. We also collected saliva and rectal samples using sterile miniature rayon swabs (1.98 mm; Puritan) stored in DNA/RNA Shield (Zymo Inc). Samples were held at –80°C using a cryoshipper (LabRepCo) prior to long-term storage. Bleeding was stopped with styptic gel, and all bats were released at their capture location. Field protocols followed guidelines for safe and humane handling of bats from the American Society of Mammalogists (54) and were approved by the Institutional Animal Care and Use Committee of the American Museum of Natural History (AMNH IACUC-20190129). Sampling was further authorized by the Belize Forest Department *via* permit FD/WL/1/19(09). Serum specimens used for proteomic analysis were approved by the National Institute of Standards and Technology Animal Care and Use Coordinator under approval MML-AR19-0018.

CoV Screening and Phylogenetics

As part of a larger viral surveillance project, we extracted and purified RNA from oral and rectal swabs using the *Quick*-RNA Viral Kit (Zymo Research). With exception of one bat, RNA from both swab types was available for all sera. We used a semi-nested PCR targeting the RNA-dependent RNA polymerase gene (RdRp) of alpha- and betacoronaviruses, following previous protocols (55). Amplicons were submitted to GENEWIZ for sequencing. Resulting sequences were aligned using Geneious (Biomatters; (56), followed by analysis using NCBI BLAST (57). PhyML 3.0 was used to build a maximum-likelihood phylogeny of these and additional CoV sequences (58).

To assess possible risk factors for CoV infection (in oral or rectal swab samples), we fit univariate logistic regression models with bat age, sex, and reproductive status as separate predictors. Because the small sample sizes used here could bias our estimates of odds ratios, we used the *logistf* package in R to implement Firth's bias reduction (59).

Proteome Profiling

In addition to profiling serum from the 19 bats described above, we also performed another proteomic experiment to evaluate effects of heat inactivation with previously analyzed samples collected in 2015 (42). From four non-inactivated sera, we submitted an aliquot of each sample to the heat inactivation process used for our 2019 samples (56°C for one hour). We then processed the paired non-inactivated and heat-inactivated sera and the 19 sera in two batches using the S-Trap method for digestion with the S-Trap micro column (ProtiFi; $\leq 100 \mu\text{g}$ binding capacity). Full details are provided in the **Supplemental Information**. Briefly, we used 2 μL (approximately 100 μg protein) of each serum sample for digestion, and a pooled bat serum was digested across the two batches. Proteins were reduced with DL-Dithiothreitol (DTT) and alkylation with 2-chloroacetamide (CAA). Digestion was performed with trypsin at an approximate 1:30 mass ratio, followed by incubation at 47°C for one hour. These resulting peptide mixtures were then reduced to dryness in a vacuum centrifuge at low heat before long-term storage at –80°C. Before analysis, samples were then reconstituted with 100 μL 0.1% formic acid (volume fraction) and vortexed, followed by centrifugation at 10000 $\times g_n$ for 10 minutes at 4°C. The sample peptide concentrations were determined *via* the Pierce quantitative colorimetric peptide assay with a Molecular Devices SpectraMax 340PC384 microplate reader.

We used the same LC-MS/MS method earlier applied for vampire bat serum proteomics (42). Using the original sample randomization gave a randomized sample order, and injection volumes were determined for 0.5 μg loading (0.21–0.44 μL sample). The run order and data key are provided in **Table S1**. Peptide mixtures were analyzed using an UltiMate 3000 Nano LC coupled to a Fusion Lumos Orbitrap mass spectrometer (ThermoFisher Scientific). A trap elute setup was used with a PepMap 100 C18 trap column (ThermoFisher Scientific) followed by separation on an Acclaim PepMap RSLC 2 μm C18 column (ThermoFisher Scientific) at 40°C. Following 10 minutes of trapping, peptides were eluted along a 60 minute two-step gradient of 5–30% mobile phase B (80% acetonitrile volume fraction, 0.08% formic acid volume fraction) over 50 minutes, followed by a ramp to 45% mobile phase B over 10 minutes, ramped to 95% mobile phase B over 5 minutes, and held at 95% mobile phase B for 5 minutes, all at a flow rate of 300 nL per minute. The data-independent acquisition (DIA) settings are briefly described here. The full scan resolution using the orbitrap was set at 120000, the mass range was 399 to 1200 m/z (corresponding to the DIA windows used), with 40 DIA windows that were 21 m/z wide, with 1 m/z overlap on each side covering the range of 399 to 1200 m/z . Each DIA window used higher-energy collisional dissociation at a normalized collision energy of 32 with quadrupole isolation width at 21 m/z . The fragment scan resolution using the orbitrap was set at 30000, and the scan range was specified as 200 to 2000 m/z . Full details of the LC-MS/MS settings are in **Supplementary Material**. The method file (85min_DIA_40x21mz.meth) and mass spectrometry proteomics data have been deposited to the

ProteomeXchange Consortium *via* the PRIDE (60) partner repository with the dataset identifier PXD031075.

In our earlier analysis of vampire bat serum proteomes (42), we used Spectronaut software to analyze our DIA data. Here, we instead used the DIA-NN software suite, which uses deep neural networks for the processing of DIA proteomic experiments (61). To search the bat samples, we used the NCBI RefSeq *Desmodus rotundus* Release 100 GCF_002940915.1_ASM294091v2 FASTA (29,845 sequences). Our full DIA-NN settings are provided in the **Supplementary Material**, and search settings and the generated spectral library (*.speclib) are included in the PRIDE submission (PXD031075). Briefly, 0.01 precursor false discovery was used, search parameters were chosen based on DIA settings, trypsin (cut at K*,R* but excluded cuts at *P) was selected, and fixed modification of cysteine carbamidomethylation. Since DIA-NN was made to handle protein inference and grouping assuming a UniProtKB-formatted FASTA file, and the NCBI RefSeq *Desmodus rotundus* Release 100 was used (RefSeq format), settings were chosen such that DIA-NN effectively ignored protein grouping, which can be performed on the backend following ontology mapping.

To additionally search for CoV proteins (42), we performed a secondary search using the same settings and the addition of a Coronaviridae FASTA (117709 sequences) retrieved from UniProtKB (2021_03 release) using taxon identifier 1118 with all SwissProt and TrEMBL entries. Search settings are included in the PRIDE submission (PXD031075).

Our identified bat proteins were then mapped to human orthologs using BLAST+ (62) and a series of python scripts described previously (42) to facilitate downstream analysis using human-centric databases (see **Supplementary Material** for full details). In those cases where human orthologs do not exist, such as mannose-binding protein A (MBL1), we used *ad hoc* ortholog identifiers. Specifically, eight identified vampire bat proteins are not found in humans (APOR, Bpifb9a, HBE2, ICA, LGB1, MBL1, Patr-A, and REG1), and we thus used UniProt identifiers from chimpanzee, cow, horse, mouse, and pig (**Table S2**).

Proteomic Data Analyses

The final data matrix of relative protein abundance for all identified proteins was stratified into two datasets for differential analysis: (i) the four 2015 samples analyzed before and after heat inactivation (**Table S3**) and (ii) the 19 samples collected in 2019 analyzed for CoV infection (**Table S4**). Our analysis also included a pooled serum sample as a quality control between the two digestion batches (**Table S2**), and digestion was evaluated by the number of peptide spectral matches. For formal statistical analyses, missing abundance values were imputed as half the minimum observed intensity of each given protein; however, for summary statistics (e.g., means, log₂-fold change [LFC]), missing values were excluded (63, 64).

For the inactivation analyses, log₂-transformed protein abundance ratios were used for each paired sample. These ratios were used in a moderated *t*-test with the *limma* package in R to evaluate protein changes within sera samples before and

after heat treatment (65), followed by Benjamini–Hochberg (BH) correction (66).

For the CoV infection analyses, we first reduced dimensionality of our protein dataset using a principal components analysis (PCA) of all identified proteins, with abundances scaled and centered to have unit variance. We then used a permutation multivariate analysis of variance (PERMANOVA) with the *vegan* package to test for differences in protein composition between uninfected and infected bats (67). Next, we used a two-sided Wilcoxon rank sum test in MATLAB to detect differentially abundant proteins between uninfected and infected bats. We again used the BH correction to adjust for the inflated false discovery rate. We also calculated LFC as the difference of mean log₂-transformed counts between uninfected and infected bats. To next identify candidate biomarkers of CoV infection, we used receiver operating characteristic (ROC) curve analysis. We used a modified function (<https://github.com/dnafinder/roc>) in MATLAB to generate the area under the ROC curve (AuROC) as a measure of classifier performance with 95% confidence intervals, which we calculated with standard error, $\alpha = 0.05$, and a putative optimum threshold closest to 100% sensitivity and specificity (68, 69). We considered proteins with AuROC ≥ 0.9 to be strict classifiers of CoV positivity, whereas proteins with AuROC ≥ 0.8 but less than 0.9 were considered less conservative; all other proteins were considered to be poor classifiers (70). Variation in the abundance of strict classifiers by CoV infection status was visualized using boxplots. We also visualized the matrix of all candidate serum biomarkers with the *heatmap* package, using log₂-transformed protein abundances (scaled and centered around zero) and Ward's hierarchical clustering method (71, 72).

Lastly, we interrogated up- and down-regulated responses to CoV infection using gene ontology (GO) analysis. First, we programmatically accessed GO terms for all identified proteins using their associated UniProt identifiers and the *UniprotR* package (73). Next, we used the *gprofiler2* package as an interface to the g:Profiler tool g:GOST for functional enrichment tests (74, 75). Enrichment was performed for all candidate protein biomarkers based on AuROC, with up- and downregulated proteins determined using log₂-fold change. We ranked our proteins by AuROC to conduct incremental enrichment testing, with the resulting *p*-values adjusted by the Set Counts and Sizes (SCS) correction. We restricted our data sources to GO biological processes, the Kyoto Encyclopedia of Genes and Genomes (KEGG), and WikiPathways (WP). We ran the enrichment tests for both our strict and less-conservative protein classifiers. We note that the eight bat proteins lacking human orthologs all had AuROC < 0.8 and therefore did not require any manual GO and pathway mapping.

RESULTS

Bat Demographics and CoV Positivity

Our sample of 19 vampire bats included for proteomic analyses consisted predominantly of females (84%) and adults (79%). One

male was reproductively active, whereas four females were lactating ($n = 3$) or pregnant ($n = 1$). Four of the 19 sera samples had paired oral or rectal swabs test positive through PCR for CoVs (21.1%); sequences are available in GenBank under accession numbers OM240577–80. Phylogenetic analyses of the four sequenced amplicons confirmed all positives in the genus *Alphacoronavirus* (Figure 1A). All four vampire bat sequences are novel α -CoVs and displayed the most genetic similarity (94.6–97.3%) to human CoVs (HCoVs; HCoV-NL63 and HCoV-229E) rather than known bat α -CoVs, including those previously found in other vampire bat colonies and other Neotropical bat species more broadly (76, 77). In particular, NCBI BLAST did not identify any closely related α -CoV sequences from one of the PCR-positive vampire bat rectal swabs (BZ19-95; OM240579). Univariate logistic regressions did not find significant (unadjusted) effects of any bat demographic variables on CoV positivity. Males were no more likely than females to be infected (OR = 2.31, $p = 0.49$), although non-reproductive individuals (OR = 6.16, $p = 0.17$) and subadult bats (OR = 5.40, $p = 0.13$) were weakly more likely to be positive for CoVs (Figure 1B).

Serum Proteome Characterization

Bottom-up proteomics using DIA identified 586 proteins in the 19 bat sera samples, with relative quantification covering 5.6 orders of magnitude (Figure 2A; Table S4). The overall number of identified proteins in our former analysis (i.e., 361 proteins) (42) and the current dataset was within the same order of magnitude and had a similar dynamic range (approximately 10^3 – 10^8 in our prior analysis versus 10^4 – 10^9 in the current analysis). There was also high overlap in identified proteins between the datasets (91% of the original 361 proteins were included in our analysis here; Figure S1) and similar protein ranks (Table S5). Although the prior and current study have low sample sizes ($n = 17$ and 19, respectively) and were sampled across different years, the similarity in protein abundance, composition, and ranks suggest that these proteomic patterns (e.g., guanylate-binding proteins, circulating 20S proteasome, and hyaluronidase-1) are not the result of sampling bias and are instead likely a consistent vampire bat phenotype, with improved protein identifications differences driven by technical advances.

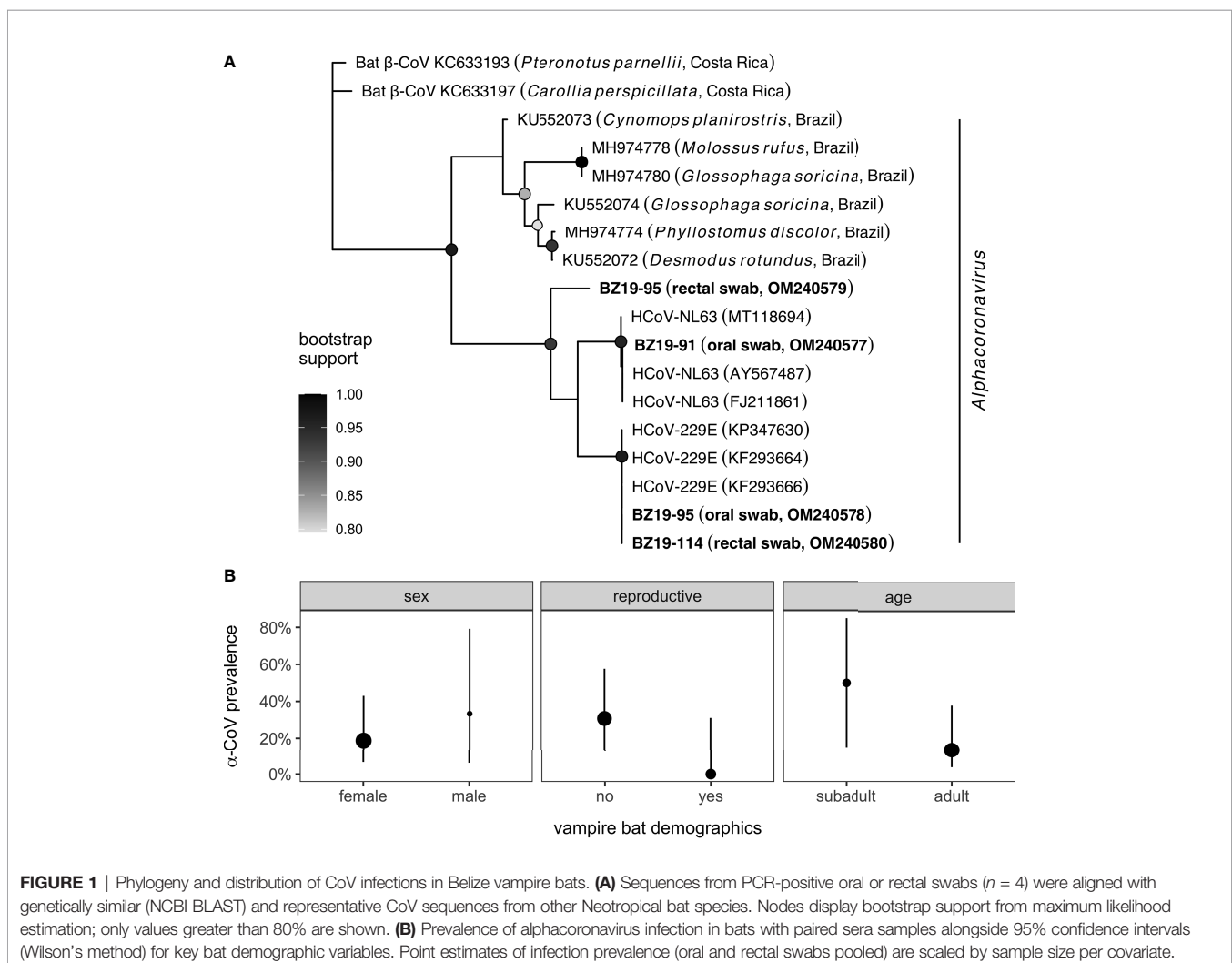


FIGURE 1 | Phylogeny and distribution of CoV infections in Belize vampire bats. **(A)** Sequences from PCR-positive oral or rectal swabs ($n = 4$) were aligned with genetically similar (NCBI BLAST) and representative CoV sequences from other Neotropical bat species. Nodes display bootstrap support from maximum likelihood estimation; only values greater than 80% are shown. **(B)** Prevalence of alphacoronavirus infection in bats with paired sera samples alongside 95% confidence intervals (Wilson's method) for key bat demographic variables. Point estimates of infection prevalence (oral and rectal swabs pooled) are scaled by sample size per covariate.

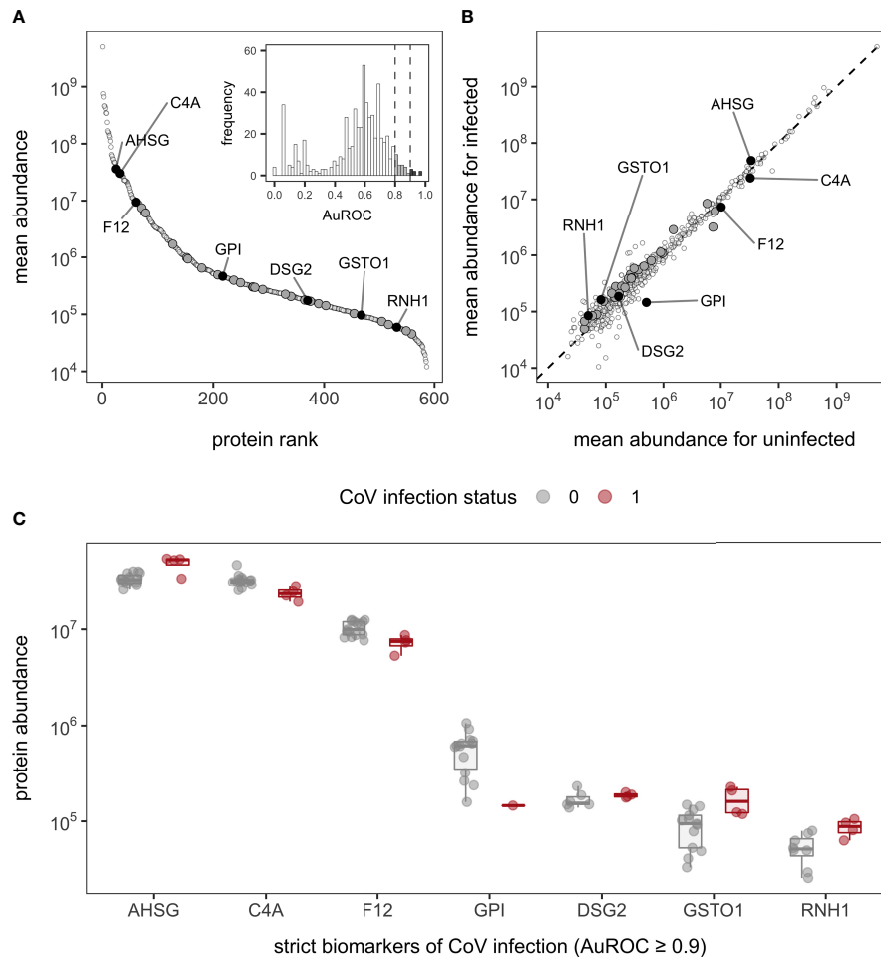


FIGURE 2 | Serum protein abundance and biomarkers of CoV infection in vampire bats. **(A)** Mean abundance of the 586 proteins was plotted with corresponding rank to illustrate the dynamic range of the serum proteome. The inset displays the distribution of AuROC values for protein biomarkers of CoV infection alongside cutoffs of 0.8 and 0.9 for strict and less-conservative biomarkers. **(B)** Comparison of mean protein abundance for uninfected and infected bats across all proteins; the dashed line shows the 1:1 reference. For both plots, less-conservative and strict biomarkers are shown in dark gray and black, with the latter labeled with gene symbols (AHSG, alpha-2-HS-glycoprotein; C4A, complement C4A; F12, coagulation factor XII; GPI, glucose-6-phosphate isomerase; DSG2, desmoglein-2; GSTO1, glutathione S-transferase omega-1; RNH1, ribonuclease inhibitor). Missing values were excluded prior to determining mean abundances. **(C)** Protein abundance between uninfected and infected bats for strict biomarkers of CoV positivity; boxplots are overlaid by raw data jittered to reduce overlap.

Effects of Heat Inactivation

One key difference between analyses here and our prior proteomic study of this vampire bat population is unknown technical artifacts from heat inactivation. To assess these possible effects, we compared proteomes before and after treatment of four serum samples used in our prior study (42). Using a moderated *t*-test of the four paired sera samples, 34 proteins showed significant changes after heat inactivation (unadjusted $p < 0.05$), but no differences remained after BH adjustment (even using a liberal adjusted $p < 0.3$). Although we found no statistically significant changes in protein abundance with heat inactivation, we observed a mean 28% absolute change across the proteome, with a maximum mean 500% absolute change. Most proteins (52.6%) changed less than 17% in response to heat inactivation (**Figure S2**; **Table S3**).

Mining for CoV Proteins

Given prior proteomic identification of putative viral proteins in undepleted serum, including CoVs (42), we broadened our search space to include any CoV proteins. As observing non-host proteins is a rare event, we used additional stringent criteria to verify any initial CoV peptide spectral matches (see **Supplementary Material**). Of the 749 CoV peptide spectral matches, none passed these more stringent criteria (**Table S6**). Thus we cannot firmly say that viral proteins were identified in this set of undepleted sera, regardless of CoV status.

Proteomic Differences With CoV Infection

To assess differences in the serum proteome between CoV-infected and uninfected bats, we first used multivariate tests. Across the 586 identified proteins, the first two PCs explained

25.46% of the variance in serum proteomes (**Figure S3**). A PERMANOVA found no difference in proteome composition by viral infection status ($F_{1,17} = 0.99$, $R^2 = 0.05$, $p = 0.46$), although variation was greater in infected bats. Using Wilcoxon rank sum tests, we initially identified 22 proteins with significantly different abundance in CoV-infected bats (unadjusted $p < 0.05$), but no differences likewise remained after BH adjustment (even using a liberal adjusted $p < 0.3$; **Figure 2B**).

In contrast to multivariate and differential abundance tests, ROC curve analyses identified 32 candidate protein biomarkers of CoV infection using strict ($n = 7$, AuROC ≥ 0.9) and less-conservative ($n = 25$, $0.9 > \text{AuROC} \geq 0.8$) classifier cutoffs (**Figure 2**). Considering the strict classifier cutoff, four vampire bat proteins were positive predictors and were weakly elevated in CoV-infected bats: RNH1 (ribonuclease inhibitor; AuROC = 0.97, LFC = 0.77), AHSG (alpha-2-HS-glycoprotein; AuROC = 0.91, LFC = 0.52), DSG2 (desmoglein-2; AuROC = 0.90, LFC = 0.16), and GSTO1 (glutathione S-transferase omega-1; AuROC = 0.90, LFC = 0.98). Conversely, three proteins were instead negative predictors and were reduced in CoV-infected bats: C4A (complement C4A; AuROC = 0.97, LFC = -0.45), F12

(coagulation factor XII; AuROC = 0.93, LFC = -0.51), and GPI (glucose-6-phosphate isomerase; AuROC = 0.03, LFC = -1.79; **Figure 2C**). The total 32 candidate biomarkers provided clear discriminatory power in differentiating the protein phenotypes of uninfected and infected bats (**Figure 3**).

We lastly interrogated up- and down-regulated responses to CoV infection using GO terms. Across the serum proteome ($n = 586$), top biological processes (≥ 30 proteins; **Figure S4**) included neutrophil degranulation (18.3%), platelet degranulation (8.5%), post-translational protein modification (8.5%), innate immune response (7.3%), cellular protein metabolic process (6.5%), blood coagulation (5.8%), cell adhesion (5.5%), signal transduction (5.5%), viral processes (5.5%), negative regulation of apoptotic process (5.3%), inflammatory response (5.1%), and regulation of complement activation (5.1%). Enrichment analyses identified multiple functional protein differences between uninfected and infected bats after SCS correction (**Figure 4**). When considering only strict protein biomarkers (AuROC ≥ 0.9), CoV-infected bats displayed downregulation of the complement system and regulation of proteolysis. When also considering less-conservative biomarkers (AuROC ≥ 0.8), infected bats also had down-regulation of immune effector processes and humoral

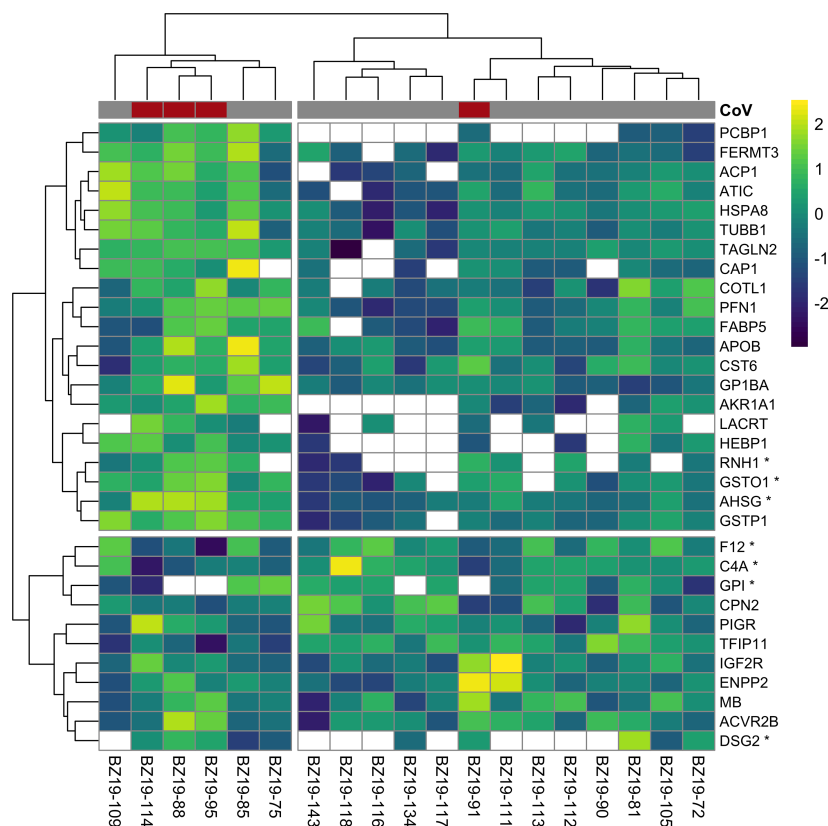
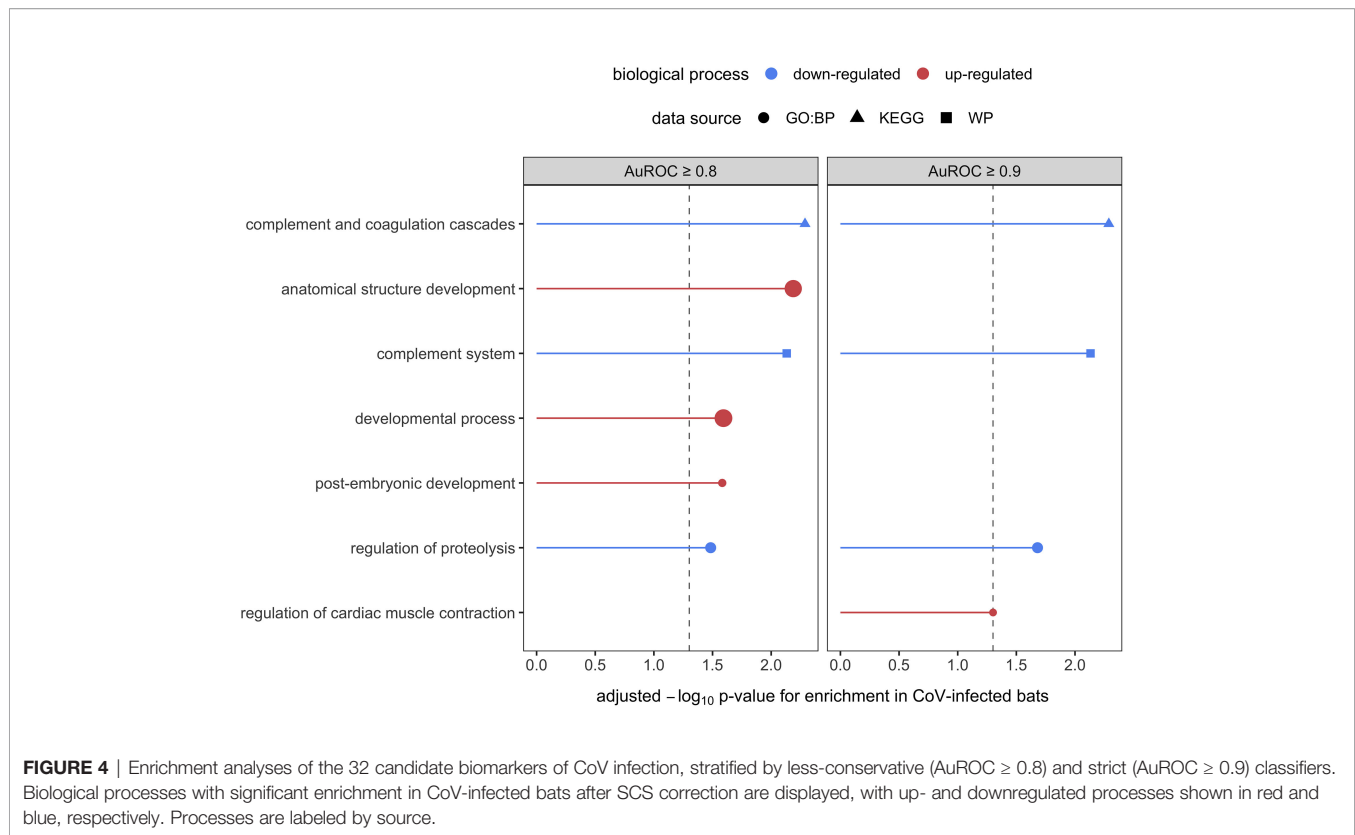


FIGURE 3 | Heatmap of \log_2 -transformed abundance for all candidate serum biomarkers of CoV infection ($n = 32$), scaled to a mean of zero. Rows display individual bats, while columns display proteins as gene symbols; those with AuROC ≥ 0.9 are marked with an asterisk. CoV infection status is shown at the top of the heatmap. Clustering used Ward's hierarchical method (71). Missing abundance values are shown as blank.



immunity. Enrichment analysis of all biomarkers also identified up-regulated processes including neutrophil-mediated immunity, overall granulocyte activation, myeloid cell responses, and glutathione processes, denoting a largely cellular immune response.

DISCUSSION

Despite an increasing interest in bat–virus interactions, especially for CoVs given their human health relevance (22, 23), we still have limited insights into the immune mechanisms involved in infection of bats (28). Here, we used serum proteomics to broadly profile the immune phenotype of wild vampire bats in the presence of relatively common CoV infections. Novel α -CoVs detected in these bats had little association with serum protein composition nor abundance, although ROC curve analyses identified 7–32 candidate biomarkers of CoV infection, including AHSG, C4A, F12, GPI, DSG2, GSTO1, and RNH1. Enrichment analyses using these protein classifiers identified strong downregulation of complement, regulation of proteolysis, immune effector processes, and humoral immunity in CoV-infected bats alongside an upregulation of neutrophil immunity, overall granulocyte activation, myeloid cell responses, and glutathione processes. Such results denote a mostly cellular immune response of vampire bats to CoVs and further identify putative biomarkers that could provide new insights into CoV pathogenesis in both wild and experimental populations.

Much bat immunology work to date has understandably focused on model bat systems under captive conditions (14, 18). However, identifying the immune correlates of infection is especially important for wild populations, where susceptibility and tolerance to infection, alongside other immunological processes, can vary based on habitat quality and host life history (e.g., reproduction) (78). Such efforts could provide a mechanistic basis for establishing when and where pathogen pressure from bats is greatest and thus help predict viral spillover (79, 80). Unlike some other global profiling techniques, proteomics has the benefit of leveraging the small blood volumes that can be obtained non-lethally from most small bats (e.g., members of the Yangochiroptera, including over 1000 species) and thus is especially amenable to the long-term, mark–recapture studies required to study bat virus dynamics (52, 81). To facilitate this work, we here built on our prior proteomic characterization of *Desmodus rotundus* (42). We identified a core serum protein phenotype for this species from multiple years of sampling that could serve as a reference for long-term proteomic studies, although technical advances (e.g., DIA-NN) likely contributed to an expanded protein repertoire in the current study. We also assessed the impacts of heat treatment, a common inactivation method for sera, given recent shifts in United States importation regulations. Artifacts from heat inactivation were not sufficiently conserved to be statistically significant, and most serum proteins had small changes in abundance before and after this treatment. Yet given the extent of such changes, we suggest original samples should typically not be analyzed with heated

samples for comparative purposes. In contexts where sera inactivation is required, however, heat treatment across samples should not bias characterization of bat serum proteomes. Such optimizations could next be applied across longitudinal timepoints to more broadly study bat–virus interactions in the wild.

We here focused this initial study on CoVs, which have been previously characterized as genetically diverse (α - and β -CoVs) in Neotropical bats, including but not limited to *Desmodus rotundus* (43, 45, 82, 83). Our detection of CoVs from a northern Belize colony of vampire bats in swab samples with paired sera (4/19) was higher than other CoV surveys in this species (46, 76, 82, 84), although future studies with larger sample sizes are needed to test if this represents a true geographic difference in virus prevalence. Yet despite many available CoV sequences in GenBank from diverse bat surveys, all CoVs detected here fell within the genus *Alphacoronavirus* but outside of known bat α -CoV clades. Instead, these viruses were either entirely novel or more closely related to human α -CoVs, specifically HCoV-NL63 and HCoV-229E, suggesting greater genetic diversity of CoVs within vampire bats than previously recognized. Such results could be further interrogated through whole-genome sequencing of these viruses (45). Similarly, such results further suggest the possibility of high zoonotic potential (or spillback from humans to bats) for vampire bat CoVs, which likely varies based on geography given the high degree of genetic differentiation across the broad distribution of *Desmodus rotundus* (85–87). Such findings should be confirmed with larger sample sizes and characterization, including *in vitro* assessments and attempts at virus isolation.

Despite identifying CoV infection in a small number of bat samples, we were unable to detect CoV proteins in the serum proteomes. Previously, we detected two CoV peptides in sera from this population, but these were likely at the edge of detection limits (42). As such detection limits are susceptible to technical artifacts, including but not limited to sample handling, protein processing, or instrument performance, heat inactivation could have affected our ability to identify similar peptides in these bat samples, especially for bats positive for CoVs by PCR. Additionally, our ability to detect viral proteins may have been further restricted by ongoing limitations in applying proteomics to wild species. In humans, over 3000 serum proteins can be detected by mass spectrometry after depletion of the most abundant proteins (41). However, using antibody-based depletion techniques is not an effective strategy in non-human mammals (47), such that undepleted serum proteomics in bats will be limited to the top 300–600 proteins, with false negatives for low abundance proteins such as those of viruses (88). Alternatively, lack of detection of CoV proteins in sera despite detection of CoV RNA in oral and rectal swabs could indicate tropism, as CoVs have been more readily detected in bat feces and saliva than in blood (89).

Using our novel α -CoVs, we then tested for differential composition and abundance of serum proteins between uninfected and infected vampire bats. In both cases, we

found negligible overall differences in serum proteomes with CoV infection. This lack of differences is not necessarily surprising, because bats and their α - and β -CoVs share a long coevolutionary history (27, 90). However, such null results should also be qualified by the challenges posed to differential abundance tests by sample imbalance, given the small number of infected relative to uninfected bats (91). To partly address this imbalance, we used ROC curve analyses to identify proteins with strict ($\text{AuROC} \geq 0.9$; $n = 7$) and less conservative ($\text{AuROC} \geq 0.8$; $n = 25$) classifier ability for infection (47, 92). The unbiased query of proteins in relation to infection through proteomics can in turn result in detection of unexpected candidate biomarkers and new insights into CoV pathogenesis in bats. For example, we identified increased ribonuclease inhibitor (RNH1) as a putative biomarker. RNH1 inhibits RNase 1 and blocks extracellular RNA degradation, possibly resulting in increased tumor necrosis factor (TNF)- α activation (93). Prior cell line studies of *Eptesicus fuscus* have shown limited production of TNF- α upon stimulation (94), whereas those of *Pteropus alecto* have suggested an induced TNF- α response (16). Whether greater abundance of pro-inflammatory cytokines such as TNF- α occur with CoV infection in bats would thus be a fruitful area for future work based on RNH1 differences here. We also identified lower complement C4A (one of two C4 isotypes) as another putative biomarker. In humans, lower complement C4A and C3 can signal elevated autoimmunity (95, 96), and decreased complement C4 and C3 in COVID-19 patients also corresponds to disease severity (97). The processes that shape serum complement, namely complement synthesis, activation, and clearance, remain poorly characterized in bats (17), but the identification of C4A as a classifier could suggest specific explorations into how complement affects CoV infection.

Other candidate biomarkers also had more direct implications for the antiviral response in bats. AHS (alpha-2-HS-glycoprotein) is a negative acute phase reactant (98) and here was a positive predictor of CoV infection. In humans, elevated AHS is accordingly protective against progression of disease caused by SARS-CoV (99), and decreased inflammation could also contribute to viral tolerance in bats. We also identified poly (rC)-binding protein 1 (PCBP1) as a positive, albeit weaker, predictor of CoV infection ($\text{AuROC} = 0.87$). This RNA-binding protein is upregulated in activated T cells to control effector T cells converting into regulatory T cells and thus stabilizes the innate immune response (100, 101); PCBP1 may also prevent virus-related inflammation (102). Whereas human patients with prolonged SARS-CoV-2 infections showed lower PCB1 compared to patients with short-term infections (103), bats with CoV infection here had elevated PCBP1 and more generally harbor more PCBP1 than humans (42). Despite focusing on two different viral genera, such results suggest both similarities and differences in how bats and humans may respond to CoV infection. More generally, the list of such candidate biomarkers identified here can be used to create accurate, sensitive, quantitative, and bat-specific parallel reaction monitoring mass spectrometry-based protein assays (104, 105). Such assays could facilitate more thorough

investigations into bat immune response to CoV infection. Further, such putative biomarkers are only observational correlates of naturally occurring CoV infection, but bats can be infected by a high diversity of viruses that could elicit similar immune responses (106, 107). Experimental infection with CoVs would be an important future step to identify the roles of such proteins in pathogenesis.

In addition to identifying candidate biomarkers, we also leveraged these proteins to more generally assess broad up- and downregulated biological processes with CoV infection through enrichment analyses. Using all candidate biomarkers, we found that CoV-infected bats displayed downregulation of the complement system, regulation of proteolysis, immune effector processes, and humoral immunity while also showing upregulated neutrophil-mediated immunity, overall granulocyte activation, myeloid cell responses, and glutathione processes. These results in part support findings from limited experimental infections of select bat species, which have shown little humoral response to CoVs (11, 31). Yet while *Rousettus aegyptiacus* challenged with SARS-like CoVs did not show hematological changes following infection (31), CoV-infected vampire bats here had largely upregulated cellular immune responses. Similarly, experimental studies have suggested bat tolerance of CoVs to be driven by upregulation of cytokine responses and a downregulated inflammatory response (11, 16, 33), but we did not find GO terms related to cytokines or inflammation in our analyses. Such discrepancies could again result from our ability to only detect the top 300–600 proteins without antibody-based depletion, which could cause low-abundance proteins (including but not limited to IFNs) being especially difficult to characterize here (88). Alternatively, these differences could reflect distinct immune responses of bats for α -CoV infection, given that experimental studies to date have focused on β -CoVs. Additionally, these findings could also signal immunological variation within and among bat clades, given that *Desmodus rotundus* and the closely related *Artibeus jamaicensis* may respond differently to CoVs (11).

Future proteomic analyses across bat species in the wild could provide a tractable means to broadly characterize host responses to viruses, including but not limited to hypothesized immune mechanisms of tolerance in this order of mammals and to infection with diverse CoVs. By leveraging the benefits of proteomics to quantify hundreds of proteins from the small sera volumes that can be obtained from most bat species (41, 42), such analyses could evaluate whether particular immune responses to viruses such as CoVs are conserved across bats (e.g., downregulation of humoral immunity) and which may be a feature of particular bat clades. In particular, further comparative proteomic analyses across Neotropical bats, including both additional members of the Phyllostomidae as well as sister families such as the Mormoopidae (108), would illuminate whether vampire bats have particular immunological relationships with CoVs that may facilitate viral tolerance. As suggested in our work here on *Desmodus rotundus*, such studies could also identify putative biomarkers that may suggest novel

mechanisms of pathogenesis and facilitate development of protein-specific assays to improve the resource base for studying the immunology of wild bats and bat–virus dynamics.

DATA AVAILABILITY STATEMENT

The datasets presented in this study can be found in online repositories. The names of the repository/repositories and accession number(s) can be found in the article/**Supplementary Material**.

ETHICS STATEMENT

The animal study was reviewed and approved by the Institutional Animal Care and Use Committee of the American Museum of Natural History (AMNH IACUC-20190129).

AUTHOR CONTRIBUTIONS

DB, MF, and NS conducted fieldwork. G-SL and RR ran CoV diagnostics. MJ, AB, and BN conducted proteomic analyses and bioinformatics. DB and BN analyzed data. DB and BN wrote the manuscript with contributions from all co-authors. All authors contributed to the article and approved the submitted version.

FUNDING

This work was supported by National Geographic (NGS-55503R-19 to DB, MF, and NS) and funds provided by Indiana University (G-SL, RR) and College of Charleston (MJ, AB).

ACKNOWLEDGMENTS

For assistance with bat sampling logistics and research permits, we thank Mark Howells, Melissa Ingala, Kelly Speer, Neil Duncan, and the staff of the Lamanai Field Research Center. Identification of certain commercial equipment, instruments, software, or materials does not imply recommendation or endorsement by the National Institute of Standards and Technology, nor does it imply that the products identified are necessarily the best available for the purpose.

SUPPLEMENTARY MATERIAL

The Supplementary Material for this article can be found online at: <https://www.frontiersin.org/articles/10.3389/fviro.2022.862961/full#supplementary-material>

REFERENCES

- Gunnell GF, Simmons NB. *Evolutionary History of Bats: Fossils, Molecules and Morphology*. Cambridge, United Kingdom: Cambridge University Press (2012).
- Simmons NB, Cirranello AL. *Bat Species of the World: A Taxonomic and Geographic Database*. (2022). p. 11. Available at: <https://batnames.org/> (Accessed on 03/14/2022).
- Olival KJ, Hosseini PR, Zambrana-Torrel C, Ross N, Bogich TL, Daszak P. Host and Viral Traits Predict Zoonotic Spillover From Mammals. *Nature* (2017) 546:646–50. doi: 10.1038/nature22975
- Mollentze N, Streicker DG. Viral Zoonotic Risk Is Homogenous Among Taxonomic Orders of Mammalian and Avian Reservoir Hosts. *Proc Natl Acad Sci USA* (2020) 117:9423–30. doi: 10.1073/pnas.1919176117
- Li W, Shi Z, Yu M, Ren W, Smith C, Epstein JH, et al. Bats Are Natural Reservoirs of SARS-Like Coronaviruses. *Science* (2005) 310:676–9. doi: 10.1126/science.1118391
- Banyard AC, Hayman D, Johnson N, McElhinney L, Fooks AR. Bats and Lyssaviruses. *Adv Virus Res* (2011) 79:239–89. doi: 10.1016/B978-0-12-387040-7.00012-3
- Halpin K, Hyatt AD, Fogarty R, Middleton D, Bingham J, Epstein JH, et al. Pteropid Bats Are Confirmed as the Reservoir Hosts of Henipaviruses: A Comprehensive Experimental Study of Virus Transmission. *Am J Trop Med Hyg* (2011) 85:946–51. doi: 10.4269/ajtmh.2011.10-0567
- Amman BR, Jones MEB, Sealy TK, Uebelhoefer LS, Schuh AJ, Bird BH, et al. Oral Shedding of Marburg Virus in Experimentally Infected Egyptian Fruit Bats (*Rousettus aegyptiacus*). *J Wildl Dis* (2015) 51:113–24. doi: 10.7589/2014-08-198
- Williamson MM, Hooper PT, Selleck PW, Westbury HA, Slocombe RF. Experimental Hendra Virus Infection in Pregnant Guinea-Pigs and Fruit Bats (*Pteropus poliocephalus*). *J Comp Pathol* (2000) 122:201–7. doi: 10.1053/jcpa.1999.0364
- Watanabe S, Masangkay JS, Nagata N, Morikawa S, Mizutani T, Fukushi S, et al. Bat Coronaviruses and Experimental Infection of Bats, the Philippines. *Emerg Infect Dis* (2010) 16:1217–23. doi: 10.3201/eid1608.100208
- Munster VJ, Adney DR, van Doremalen N, Brown VR, Miazgowiec KL, Milne-Price S, et al. Replication and Shedding of MERS-CoV in Jamaican Fruit Bats (*Artibeus jamaicensis*). *Sci Rep* (2016) 6:21878. doi: 10.1038/srep21878
- Wilkinson GS, South JM. Life History, Ecology and Longevity in Bats. *Aging Cell* (2002) 1:124–31. doi: 10.1046/j.1474-9728.2002.00020.x
- Zhang G, Cowled C, Shi Z, Huang Z, Bishop-Lilly KA, Fang X, et al. Comparative Analysis of Bat Genomes Provides Insight Into the Evolution of Flight and Immunity. *Science* (2013) 339:456–60. doi: 10.1126/science.1230835
- Irving AT, Ahn M, Goh G, Anderson DE, Wang L-F. Lessons From the Host Defences of Bats, a Unique Viral Reservoir. *Nature* (2021) 589:363–70. doi: 10.1038/s41586-020-03128-0
- Zhou P, Tachedjian M, Wynne JW, Boyd V, Cui J, Smith I, et al. Contraction of the Type I IFN Locus and Unusual Constitutive Expression of IFN- α in Bats. *Proc Natl Acad Sci USA* (2016) 113:2696–701. doi: 10.1073/pnas.1518240113
- Ahn M, Anderson DE, Zhang Q, Tan CW, Lim BL, Luko K, et al. Dampened NLRP3-Mediated Inflammation in Bats and Implications for a Special Viral Reservoir Host. *Nat Microbiol* (2019) 4:789–99. doi: 10.1038/s41564-019-0371-3
- Becker DJ, Czizirjak GÁ, Rynda-Apple A, Plowright RK. Handling Stress and Sample Storage Are Associated With Weaker Complement-Mediated Bactericidal Ability in Birds But Not Bats. *Physiol Biochem Zool* (2019) 92:37–48. doi: 10.1086/701069
- Banerjee A, Baker ML, Kulcsar K, Misra V, Plowright R, Mossman K. Novel Insights Into Immune Systems of Bats. *Front Immunol* (2020) 11:26. doi: 10.3389/fimmu.2020.00026
- Jebb D, Huang Z, Pippel M, Hughes GM, Lavrichenko K, Devanna P, et al. Six Reference-Quality Genomes Reveal Evolution of Bat Adaptations. *Nature* (2020) 583:578–84. doi: 10.1038/s41586-020-2486-3
- Bondet V, Le Baut M, Le Poder S, Lécuyer A, Petit T, Wedlarski R, et al. Constitutive Ifn α Protein Production in Bats. *Front Immunol* (2021) 4427. doi: 10.1101/2021.06.21.449208
- Fischhoff IR, Castellanos AA, Rodrigues J. P. G. L. M., Varsani A, Han BA. Predicting the Zoonotic Capacity of Mammals to Transmit SARS-CoV-2. *Proc Biol Sci* (2021) 288:20211651. doi: 10.1098/rspb.2021.1651
- Becker DJ, Albery GF, Sjodin AR, Poisot T, Bergner LM, Chen B, et al. Optimising Predictive Models to Prioritise Viral Discovery in Zoonotic Reservoirs. *Lancet Microbe* (2022). doi: 10.1016/S2666-5247(21)00245-7
- Anthony SJ, Johnson CK, Greig DJ, Kramer S, Che X, Wells H, et al. Global Patterns in Coronavirus Diversity. *Virus Evol* (2017) 3:vex012. doi: 10.1093/ve/vex012
- Ye Z-W, Yuan S, Yuen K-S, Fung S-Y, Chan C-P, Jin D-Y. Zoonotic Origins of Human Coronaviruses. *Int J Biol Sci* (2020) 16:1686–97. doi: 10.7150/ijbs.45472
- Vlasova AN, Diaz A, Damtie D, Xiu L, Toh T-H, Lee JS-Y, et al. Novel Canine Coronavirus Isolated From a Hospitalized Pneumonia Patient, East Malaysia. *Clin Infect Dis* (2021) 74:446–54. doi: 10.1093/cid/ciab456
- Woo PCY, Lau SKP, Li KSM, Poon RWS, Wong BHL, Tsoi H-W, et al. Molecular Diversity of Coronaviruses in Bats. *Virology* (2006) 351:180–7. doi: 10.1016/j.virol.2006.02.041
- Woo PCY, Lau SKP, Lam CSF, Lau CCY, Tsang AKL, Lau JHN, et al. Discovery of Seven Novel Mammalian and Avian Coronaviruses in the Genus Deltacoronavirus Supports Bat Coronaviruses as the Gene Source of Alphacoronavirus and Betacoronavirus and Avian Coronaviruses as the Gene Source of Gammacoronavirus and Deltacoronavirus. *J Virol* (2012) 86:3995–4008. doi: 10.1128/JVI.06540-11
- Ruiz-Aravena M, McKee C, Gamble A, Lunn T, Morris A, Snedden CE, et al. Ecology, Evolution and Spillover of Coronaviruses From Bats. *Nat Rev Microbiol* (2021), 1–16. doi: 10.1038/s41579-021-00652-2
- Anthony SJ, Gilardi K, Menachery VD, Goldstein T, Ssebide B, Mbabazi R, et al. Further Evidence for Bats as the Evolutionary Source of Middle East Respiratory Syndrome Coronavirus. *MBio* (2017) 8:e00373–17. doi: 10.1128/mBio.00373-17
- Boni MF, Lemey P, Jiang X, Lam TT-Y, Perry BW, Castoe TA, et al. Evolutionary Origins of the SARS-CoV-2 Sarbecovirus Lineage Responsible for the COVID-19 Pandemic. *Nat Microbiol* (2020) 5:1408–17. doi: 10.1038/s41564-020-0771-4
- van Doremalen N, Schäfer A, Menachery VD, Letko M, Bushmaker T, Fischer RJ, et al. SARS-Like Coronavirus WIV1-CoV Does Not Replicate in Egyptian Fruit Bats (*Rousettus aegyptiacus*). *Viruses* (2018) 10:727. doi: 10.3390/v10120727
- Hall JS, Knowles S, Nashold SW, Ip HS, Leon AE, Rocke T, et al. Experimental Challenge of a North American Bat Species, Big Brown Bat (*Eptesicus fuscus*), With SARS-CoV-2. *Transbound Emerg Dis* (2021) 68:3443–52. doi: 10.1111/tbed.13949
- Lau SKP, Wong ACP, Luk HKH, Li KSM, Fung J, He Z, et al. Differential Tropism of SARS-CoV and SARS-CoV-2 in Bat Cells. *Emerg Infect Dis* (2020) 26:2961–5. doi: 10.3201/eid2612.202308
- Banerjee A, Kulcsar K, Misra V, Frieman M, Mossman K. Bats and Coronaviruses. *Viruses* (2019) 11:41. doi: 10.3390/v11010041
- Wang L-F, Gamage AM, Chan WOY, Hiller M, Teeling EC. Decoding Bat Immunity: The Need for a Coordinated Research Approach. *Nat Rev Immunol* (2021) 21:269–71. doi: 10.1038/s41577-021-00523-0
- Papenfuss AT, Baker ML, Feng Z-P, Tachedjian M, Cramer G, Cowled C, et al. The Immune Gene Repertoire of an Important Viral Reservoir, the Australian Black Flying Fox. *BMC Genomics* (2012) 13:261. doi: 10.1186/1471-2164-13-261
- Davy CM, Donaldson ME, Subudhi S, Rapin N, Warnecke L, Turner JM, et al. White-Nose Syndrome Is Associated With Increased Replication of a Naturally Persisting Coronaviruses in Bats. *Sci Rep* (2018) 8:15508. doi: 10.1038/s41598-018-33975-x
- Ren L, Wu C, Guo L, Yao J, Wang C, Xiao Y, et al. Single-Cell Transcriptomic Atlas of the Chinese Horseshoe Bat (*Rhinolophus sinicus*) Provides Insight Into the Cellular Mechanisms Which Enable Bats to be Viral. *bioRxiv* (2020). doi: 10.1101/2020.06.30.175778.abstract
- Huang Z, Gallot A, Lao NT, Puechmaile SJ, Foley NM, Jebb D, et al. A Nonlethal Sampling Method to Obtain, Generate and Assemble Whole Blood Transcriptomes From Small, Wild Mammals. *Mol Ecol Resour* (2016) 16:150–62. doi: 10.1111/1755-0998.12447

40. Huang Z, Whelan CV, Foley NM, Jebb D, Touzalin F, Petit EJ, et al. Longitudinal Comparative Transcriptomics Reveals Unique Mechanisms Underlying Extended Healthspan in Bats. *Nat Ecol Evol* (2019) 3:1110–20. doi: 10.1038/s41559-019-0913-3
41. Uhlén M, Karlsson MJ, Hober A, Svensson A-S, Scheffel J, Kotol D, et al. The Human Secretome. *Sci Signal* (2019) 12:eaaz0274. doi: 10.1126/scisignal.aaz0274
42. Neely BA, Janech MG, Simmons NB, Bland AM, Becker DJ. Surveying the Vampire Bat (*Desmodus rotundus*) Serum Proteome: A Resource for Identifying Immunological Proteins and Detecting Pathogens. *J Proteome Res* (2021) 20(5):2547–59. doi: 10.1021/acs.jproteome.0c00995
43. Brandão PE, Scheffer K, Villarreal LY, Achkar S, Oliveira R, de N,F, et al. A Coronavirus Detected in the Vampire Bat *Desmodus rotundus*. *Braz J Infect Dis* (2008) 12:466–8. doi: 10.1590/S1413-86702008000600003
44. Schneider MC, Romijn PC, Uieda W, Tamayo H, da Silva DF, Belotto A, et al. Rabies Transmitted by Vampire Bats to Humans: An Emerging Zoonotic Disease in Latin America? *Rev Panam Salud Publica* (2009) 25:260–9. doi: 10.1590/S1020-49892009000300010
45. Bergner LM, Orton RJ, Streicker DG. Complete Genome Sequence of an Alphacoronavirus From Common Vampire Bats in Peru. *Microbiol Resour Annu* (2020) 9:e00742–20. doi: 10.1128/MRA.00742-20
46. Alves RS, do Canto Olegário J, Weber MN, da Silva MS, Canova R, Sauthier JT, et al. Detection of Coronavirus in Vampire Bats (*Desmodus Rotundus*) in Southern Brazil. *Transbound Emerg Dis* (2021). doi: 10.1111/tbed.14150
47. Neely BA, Ferrante JA, Chaves JM, Soper JL, Almeida JS, Arthur JM, et al. Proteomic Analysis of Plasma From California Sea Lions (*Zalophus californianus*) Reveals Apolipoprotein E as a Candidate Biomarker of Chronic Domoic Acid Toxicosis. *PLoS One* (2014) 10:e0123295. doi: 10.1371/journal.pone.0123295
48. Neely BA, Prager KC, Bland AM, Fontaine C, Gulland FM, Janech MG. Proteomic Analysis of Urine From California Sea Lions (*Zalophus californianus*): A Resource for Urinary Biomarker Discovery. *J Proteome Res* (2018) 17:3281–91. doi: 10.1021/acs.jproteome.8b00416
49. Geyer PE, Holdt LM, Teupser D, Mann M. Revisiting Biomarker Discovery by Plasma Proteomics. *Mol Syst Biol* (2017) 13:942. doi: 10.15252/msb.20156297
50. Schulz JE, Seifert SN, Thompson JT, Avanzato V, Sterling SL, Yan L, et al. Serological Evidence for Henipa-Like and Filo-Like Viruses in Trinidad Bats. *J Infect Dis* (2020) 221:S375–82. doi: 10.1093/infdis/jiz648
51. Aebersold R, Mann M. Mass-Spectrometric Exploration of Proteome Structure and Function. *Nature* (2016) 537:347–55. doi: 10.1038/nature19949
52. Heck M, Neely BA. Proteomics in Non-Model Organisms: A New Analytical Frontier. *J Proteome Res* (2020) 19:3595–606. doi: 10.1021/acs.jproteome.0c00448
53. Becker DJ, Broos A, Bergner LM, Meza DK, Simmons NB, Fenton MB, et al. Temporal Patterns of Vampire Bat Rabies and Host Connectivity in Belize. *Transbound Emerg Dis* (2020) 68:870–9. doi: 10.1111/tbed.13754
54. Sikes RS, Gannon WL. Guidelines of the American Society of Mammalogists for the Use of Wild Mammals in Research. *J Mammal* (2011) 92:235–53. doi: 10.1644/10-MAMM-F-355.1
55. Monchatre-Leroy E, Boué F, Boucher J-M, Renault C, Moutou F, Ar Gouilh M, et al. Identification of Alpha and Beta Coronavirus in Wildlife Species in France: Bats, Rodents, Rabbits, and Hedgehogs. *Viruses* (2017) 9:364. doi: 10.3390/v9120364
56. Kearse M, Moir R, Wilson A, Stones-Havas S, Cheung M, Sturrock S, et al. Geneious Basic: An Integrated and Extendable Desktop Software Platform for the Organization and Analysis of Sequence Data. *Bioinformatics* (2012) 28:1647–9. doi: 10.1093/bioinformatics/bts199
57. Altschul SF, Gish W, Miller W, Myers EW, Lipman DJ. Basic Local Alignment Search Tool. *J Mol Biol* (1990) 215:403–10. doi: 10.1016/S0022-2836(05)80360-2
58. Guindon S, Dufayard J-F, Lefort V, Anisimova M, Hordijk W, Gascuel O. New Algorithms and Methods to Estimate Maximum-Likelihood Phylogenies: Assessing the Performance of PhyML 3.0. *Syst Biol* (2010) 59:307–21. doi: 10.1093/sysbio/syq010
59. Heinze G, Schemper M. A Solution to the Problem of Separation in Logistic Regression. *Stat Med* (2002) 21:2409–19. doi: 10.1002/sim.1047
60. Perez-Riverol Y, Bai J, Bandla C, Garcia-Seisdedos D, Hwapathirana S, Kamatchinathan S, et al. The PRIDE Database Resources in 2022: A Hub for Mass Spectrometry-Based Proteomics Evidences. *Nucleic Acids Res* (2022) 50:D543–52. doi: 10.1093/nar/gkab1038
61. Demichev V, Messner CB, Vernardis SI, Lilley KS, Ralser M. DIA-NN: Neural Networks and Interference Correction Enable Deep Proteome Coverage in High Throughput. *Nat Methods* (2020) 17:41–4. doi: 10.1038/s41592-019-0638-x
62. Camacho C, Coulouris G, Avagyan V, Ma N, Papadopoulos J, Bealer K, et al. BLAST+: Architecture and Applications. *BMC Bioinf* (2009) 10:421. doi: 10.1186/1471-2105-10-421
63. Lazar C, Gatto L, Ferro M, Bruley C, Burger T. Accounting for the Multiple Natures of Missing Values in Label-Free Quantitative Proteomics Data Sets to Compare Imputation Strategies. *J Proteome Res* (2016) 15:1116–25. doi: 10.1021/acs.jproteome.5b00981
64. Arioli A, Dagliati A, Geary B, Peek N, Kalra PA, Whetton AD, et al. OptiMissP: A Dashboard to Assess Missingness in Proteomic Data-Independent Acquisition Mass Spectrometry. *PLoS One* (2021) 16:e0249771. doi: 10.1371/journal.pone.0249771
65. Ritchie ME, Phipson B, Wu D, Hu Y, Law CW, Shi W, et al. Limma Powers Differential Expression Analyses for RNA-Sequencing and Microarray Studies. *Nucleic Acids Res* (2015) 43:e47. doi: 10.1093/nar/gkv007
66. Benjamini Y, Hochberg Y. Controlling the False Discovery Rate: A Practical and Powerful Approach to Multiple Testing. *J R Stat Soc* (1995) 57:289–300. doi: 10.1111/j.2517-6161.1995.tb02031.x
67. Dixon P. VEGAN, a Package of R Functions for Community Ecology. *J Veg Sci* (2003) 14:927–30. doi: 10.1111/j.1654-1103.2003.tb02228.x
68. Hanley JA, McNeil BJ. The Meaning and Use of the Area Under a Receiver Operating Characteristic (ROC) Curve. *Radiology* (1982) 143:29–36. doi: 10.1148/radiology.143.1.7063747
69. Pepe MS. *The Statistical Evaluation of Medical Tests for Classification and Prediction*. Oxford, United Kingdom: Oxford University Press (2003).
70. Mallick P, Schirle M, Chen SS, Flory MR, Lee H, Martin D, et al. Computational Prediction of Proteotypic Peptides for Quantitative Proteomics. *Nat Biotechnol* (2007) 25:125–31. doi: 10.1038/nbt1275
71. Murtagh F, Legendre P. Ward's Hierarchical Agglomerative Clustering Method: Which Algorithms Implement Ward's Criterion? *J Classification* (2014) 31:274–95. doi: 10.1007/s00357-014-9161-z
72. Kolde R, Kolde MR. Package “Pheatmap.” *R Package* (2015) 1:790.
73. Soudy M, Anwar AM, Ahmed EA, Osama A, Ezzeldin S, Mahgoub S, et al. UniprotR: Retrieving and Visualizing Protein Sequence and Functional Information From Universal Protein Resource (UniProt Knowledgebase). *J Proteomics* (2020) 213:103613. doi: 10.1016/j.jpro.2019.103613
74. Raudvere U, Kolberg L, Kuzmin I, Arak T, Adler P, Peterson H, et al. G:Profiler: A Web Server for Functional Enrichment Analysis and Conversions of Gene List Update. *Nucleic Acids Res* (2019) 47:W191–8. doi: 10.1093/nar/gkz369
75. Kolberg L, Raudvere U, Kuzmin I, Vilo J, Peterson H. Gprofiler2 – an R Package for Gene List Functional Enrichment Analysis and Namespace Conversion Toolset G:Profiler. *F1000Res* (2020) 9:709. doi: 10.12688/f1000research.24956.2
76. Asano KM, Hora AS, Scheffer KC, Fahl WO, Iamamoto K, Mori E, et al. Erratum to: Alphacoronavirus in Urban Molossidae and Phyllostomidae Bats, Brazil. *Virol J* (2016) 13:124. doi: 10.1186/s12985-016-0581-8
77. Bittar C, Machado RRG, Comelis MT, Bueno LM, Beguelini MR, Morielle-Versute E, et al. Alphacoronavirus Detection in Lungs, Liver, and Intestines of Bats From Brazil. *Microb Ecol* (2020) 79:203–12. doi: 10.1007/s00248-019-01391-x
78. Becker DJ, Albery GF, Kessler MK, Lunn TJ, Falvo CA, Cziriák GÁ, et al. Macroimmunology: The Drivers and Consequences of Spatial Patterns in Wildlife Immune Defence. *J Anim Ecol* (2020) 89(4):972–95. doi: 10.1111/1365-2656.13166
79. Plowright RK, Peel AJ, Streicker DG, Gilbert AT, McCallum H, Wood J, et al. Transmission or Within-Host Dynamics Driving Pulses of Zoonotic Viruses in Reservoir–Host Populations. *PLoS Negl Trop Dis* (2016) 10:e0004796. doi: 10.1371/journal.pntd.0004796

80. Becker D, Eby P, Madden W, Peel A, Plowright R. Ecological Conditions Experienced by Bat Reservoir Hosts Predict the Intensity of Hendra Virus Excretion Over Space and Time. *bioRxiv* (2021). doi: 10.1101/2021.08.19.457011
81. Plowright RK, Becker DJ, McCallum H, Manlove KR. Sampling to Elucidate the Dynamics of Infections in Reservoir Hosts. *Philos Trans R Soc Lond B Biol Sci* (2019) 374:20180336. doi: 10.1098/rstb.2018.0336
82. Anthony SJ, Ojeda-Flores R, Rico-Chávez O, Navarrete-Macias I, Zambrana-Torrel CM, Rostal MK, et al. Coronaviruses in Bats From Mexico. *J Gen Virol* (2013) 94:1028–38. doi: 10.1099/vir.0.049759-0
83. Corman VM, Rasche A, Diallo TD, Cottontail VM, Stöcker A, Souza BF, et al. Highly Diversified Coronaviruses in Neotropical Bats. *J Gen Virol* (2013) 94:1984–94. doi: 10.1099/vir.0.054841-0
84. Wray AK, Olival KJ, Morán D, Lopez MR, Alvarez D, Navarrete-Macias I, et al. Viral Diversity, Prey Preference, and Bartonella Prevalence in *Desmodus Rotundus* in Guatemala. *Ecohealth* (2016) 13:761–74. doi: 10.1007/s10393-016-1183-z
85. Martins FM, Templeton AR, Pavan ACO, Kohlbach BC, Morgante JS. Phylogeography of the Common Vampire Bat (*Desmodus Rotundus*): Marked Population Structure, Neotropical Pleistocene Vicariance and Incongruence Between Nuclear and mtDNA Markers. *BMC Evol Biol* (2009) 9:294. doi: 10.1186/1471-2148-9-294
86. Streicker DG, Winternitz JC, Satterfield DA, Condori-Condori RE, Broos A, Tello C, et al. Host-Pathogen Evolutionary Signatures Reveal Dynamics and Future Invasions of Vampire Bat Rabies. *Proc Natl Acad Sci USA* (2016) 113:10926–31. doi: 10.1073/pnas.1606587113
87. Bergner LM, Mollentze N, Orton RJ, Tello C, Broos A, Biek R, et al. Characterizing and Evaluating the Zoonotic Potential of Novel Viruses Discovered in Vampire Bats. *Viruses* (2021) 13:252. doi: 10.3390/v13020252
88. Anderson NL, Anderson NG. The Human Plasma Proteome: History, Character, and Diagnostic Prospects. *Mol Cell Proteomics* (2002) 1:845–67. doi: 10.1074/mcp.R200007-MCP200
89. Smith CS, de Jong CE, Meers J, Henning J, Wang L-F, Field HE. Coronavirus Infection and Diversity in Bats in the Australasian Region. *Ecohealth* (2016) 13:72–82. doi: 10.1007/s10393-016-1116-x
90. Cui J, Han N, Streicker D, Li G, Tang X, Shi Z, et al. Evolutionary Relationships Between Bat Coronaviruses and Their Hosts. *Emerg Infect Dis* (2007) 13:1526–32. doi: 10.3201/eid1310.070448
91. Yang K, Li J, Gao H. The Impact of Sample Imbalance on Identifying Differentially Expressed Genes. *BMC Bioinf* (2006) 7 Suppl 4:S8. doi: 10.1186/1471-2105-7-S4-S8
92. Arthur JM, Hill EG, Alge JL, Lewis EC, Neely BA, Janech MG, et al. Evaluation of 32 Urine Biomarkers to Predict the Progression of Acute Kidney Injury After Cardiac Surgery. *Kidney Int* (2014) 85:431–8. doi: 10.1038/ki.2013.333
93. Zechendorf E, O’Riordan CE, Stiehler L, Wischmeyer N, Chiazza F, Collotta D, et al. Ribonuclease 1 Attenuates Septic Cardiomyopathy and Cardiac Apoptosis in a Murine Model of Polymicrobial Sepsis. *JCI Insight* (2020) 5: e131571. doi: 10.1172/jci.insight.131571
94. Banerjee A, Rapin N, Bollinger T, Misra V. Lack of Inflammatory Gene Expression in Bats: A Unique Role for a Transcription Repressor. *Sci Rep* (2017) 7:1–5. doi: 10.1038/s41598-017-01513-w
95. Walport MJ. Complement and Systemic Lupus Erythematosus. *Arthritis Res* (2002) 4 Suppl 3:S279–93. doi: 10.1186/ar586
96. Wang H, Liu M. Complement C4, Infections, and Autoimmune Diseases. *Front Immunol* (2021) 12:694928. doi: 10.3389/fimmu.2021.694928
97. Zinellu A, Mangoni AA. Serum Complement C3 and C4 and COVID-19 Severity and Mortality: A Systematic Review and Meta-Analysis With Meta-Regression. *Front Immunol* (2021) 12:696085. doi: 10.3389/fimmu.2021.696085
98. Lebreton JP, Joisel F, Raoult JP, Lannuzel B, Rogez JP, Humbert G. Serum Concentration of Human Alpha 2 HS Glycoprotein During the Inflammatory Process: Evidence That Alpha 2 HS Glycoprotein Is a Negative Acute-Phase Reactant. *J Clin Invest* (1979) 64:1118–29. doi: 10.1172/JCI109551
99. Zhu X, Wang Y, Zhang H, Liu X, Chen T, Yang R, et al. Genetic Variation of the Human α -2-Heremans-Schmid Glycoprotein (AHSG) Gene Associated With the Risk of SARS-CoV Infection. *PLoS One* (2011) 6:e23730. doi: 10.1371/journal.pone.0023730
100. Ansa-Addo EA, Huang H-C, Iamsawat S, Yu X-Z, Howe PH, Li Z. RNA-Binding Protein PCBP1 Shapes Tolerance and Immune Response by Constraining the Formation of Regulatory T Cells. *J Immunol* (2019) 202:57.12–2.
101. Ansa-Addo EA, Huang H-C, Riesenberger B, Iamsawat S, Borucki D, Nelson MH, et al. RNA Binding Protein PCBP1 Is an Intracellular Immune Checkpoint for Shaping T Cell Responses in Cancer Immunity. *Sci Adv* (2020) 6:eaa3865. doi: 10.1126/sciadv.aaz3865
102. Zhou X, You F, Chen H, Jiang Z. Poly(C)-Binding Protein 1 (PCBP1) Mediates Housekeeping Degradation of Mitochondrial Antiviral Signaling (MAVS). *Cell Res* (2012) 22:717–27. doi: 10.1038/cr.2011.184
103. Yang B, Fan J, Huang J, Guo E, Fu Y, Liu S, et al. Clinical and Molecular Characteristics of COVID-19 Patients With Persistent SARS-CoV-2 Infection. *Nat Commun* (2021) 12:1–3. doi: 10.1038/s41467-021-23621-y
104. Neely BA, Carlin KP, Arthur JM, McFee WE, Janech MG. Ratiometric Measurements of Adiponectin by Mass Spectrometry in Bottlenose Dolphins (*Tursiops truncatus*) With Iron Overload Reveal an Association With Insulin Resistance and Glucagon. *Front Endocrinol* (2013) 4:132. doi: 10.3389/fendo.2013.00132
105. Neely BA, Soper JL, Gulland FMD, Bell PD, Kindy M, Arthur JM, et al. Proteomic Analysis of Cerebrospinal Fluid in California Sea Lions (*Zalophus californianus*) With Domoic Acid Toxicosis Identifies Proteins Associated With Neurodegeneration. *Proteomics* (2015) 15:4051–63. doi: 10.1002/pmic.201500167
106. Bergner LM, Orton RJ, da Silva Filipe A. Using Noninvasive Metagenomics to Characterize Viral Communities From Wildlife. *Mol Ecol* (2019) 19:128–43. doi: 10.1111/1755-0998.12946
107. Van Brussel K, Holmes EC. Zoonotic Disease and Virome Diversity in Bats. *Curr Opin Virol* (2022) 52:192–202. doi: 10.1016/j.coviro.2021.12.008
108. Rojas D, Warsi OM, Dávalos LM. Bats (Chiroptera: noctilionoidea) Challenge a Recent Origin of Extant Neotropical Diversity. *Syst Biol* (2016) 65:432–48. doi: 10.1093/sysbio/syw011

Conflict of Interest: The authors declare that the research was conducted in the absence of any commercial or financial relationships that could be construed as a potential conflict of interest.

Publisher’s Note: All claims expressed in this article are solely those of the authors and do not necessarily represent those of their affiliated organizations, or those of the publisher, the editors and the reviewers. Any product that may be evaluated in this article, or claim that may be made by its manufacturer, is not guaranteed or endorsed by the publisher.

Copyright © 2022 Becker, Lei, Janech, Bland, Fenton, Simmons, Relich and Neely. This is an open-access article distributed under the terms of the Creative Commons Attribution License (CC BY). The use, distribution or reproduction in other forums is permitted, provided the original author(s) and the copyright owner(s) are credited and that the original publication in this journal is cited, in accordance with accepted academic practice. No use, distribution or reproduction is permitted which does not comply with these terms.