



## OPEN ACCESS

EDITED BY  
Khalid Mehmood,  
Islamia University of Bahawalpur, Pakistan

REVIEWED BY  
Jean-Claude Desfontis,  
Oniris, Ecole Nationale Vétérinaire  
Agroalimentaire et de l'Alimentation, France  
Byeongteck Kang,  
Chungbuk National University, Republic  
of Korea

\*CORRESPONDENCE  
Ha-Jung Kim  
✉ kimhj614@jnu.ac.kr

SPECIALTY SECTION  
This article was submitted to  
Comparative and Clinical Medicine,  
a section of the journal  
Frontiers in Veterinary Science

RECEIVED 24 October 2022  
ACCEPTED 16 January 2023  
PUBLISHED 02 February 2023

CITATION  
Kim J, Lee J-H, Song Y and Kim H-J (2023)  
Effect of indoor house dust mite concentration  
on canine atopic dermatitis.  
*Front. Vet. Sci.* 10:1078306.  
doi: 10.3389/fvets.2023.1078306

COPYRIGHT  
© 2023 Kim, Lee, Song and Kim. This is an  
open-access article distributed under the terms  
of the [Creative Commons Attribution License  
\(CC BY\)](https://creativecommons.org/licenses/by/4.0/). The use, distribution or reproduction  
in other forums is permitted, provided the  
original author(s) and the copyright owner(s)  
are credited and that the original publication in  
this journal is cited, in accordance with  
accepted academic practice. No use,  
distribution or reproduction is permitted which  
does not comply with these terms.

# Effect of indoor house dust mite concentration on canine atopic dermatitis

Jiheee Kim<sup>1</sup>, Ji-Hye Lee<sup>1,2</sup>, Yunji Song<sup>1,2</sup> and Ha-Jung Kim<sup>1,2\*</sup>

<sup>1</sup>Department of Internal Medicine, College of Veterinary Medicine, Chonnam National University, Gwangju, Republic of Korea, <sup>2</sup>BK 21 Project Team, College of Veterinary Medicine, Chonnam National University, Gwangju, Republic of Korea

**Introduction:** House dust mites (HDM) are regarded as essential environmental allergens not only in human, but also in canine atopic dermatitis (CAD), however, there are only a few studies on the influence of indoor HDM concentration on the disease.

**Methods:** Our study analyzed the correlation between the indoor HDM concentration, the severity of CAD, and the residential environments in client-owned 35 AD and 13 healthy dogs. We measured the extent of CAD and severity index-04 (CADESI-04), pruritus visual analog scale (PVAS), and transepidermal water loss (TEWL), indoor relative humidity (RH) and analyzed the residential environment questionnaires to evaluate AD severity.

**Results:** The *Der f 1* concentration had an inverse association with TEWL, and no association with CADESI-04 and PVAS. The *Der f 1* concentration was significantly high in the group living near the green area and 40% or higher RH.

**Discussion:** Our results suggest two possibilities: (1) Living around green areas and maintaining an appropriate indoor climate may help to improve CAD clinical symptoms. (2) The HDM may contain endotoxin and when present in high concentrations in CAD, they play a preventive role by enhancing the skin barrier function. Further studies with a larger number of dogs may help further elucidate an association between CAD and *Der f 1*.

## KEYWORDS

atopic dermatitis, house dust mites, dog, environment, transepidermal water loss

## 1. Introduction

Atopic dermatitis (AD) is a hereditary pruritic skin disease closely associated with an environmental allergen, and is reported to be related to the house dust mite (HDM) in both dogs and humans (1). Previous studies have shown that the sensitization rate of HDM in the human atopic patients is about 35%, and about 72 and 25% of the canine atopic patients had a positive reaction to *Dermatophagoides farinae* (*D. farinae*) and *Dermatophagoides pteronyssinus* (*D. pteronyssinus*), respectively (1, 2). HDM is affected significantly by the geographic characteristics associated with its ecological property. *D. farinae* is the dominant species of HDM in Korea, followed by *D. pteronyssinus* (3). Several studies have investigated how exposure to HDM in humans becomes a risk factor for asthma or AD through measuring *Der f 1* and/or *Der p 1* allergen (4–7). In particular, exposure to allergen influences the development of asthma symptoms greatly (8). Although there are fewer studies on the effects of HDM on AD than allergic rhinitis or asthma, there are reports that suggested that high exposure to HDM may worsen AD severity (9, 10). However, despite the higher sensitization ratio to HDM in dogs than in humans (2), there are only a few studies on the association between indoor HDM concentration and CAD, with the previous research failing to reveal any significant correlation (11).

AD is a type 1 hypersensitivity reaction emanating from exposure to environmental allergens such as HDM through an impaired epidermis, resulting in the production of specific IgE (12, 13).

The skin barrier is considered to be disturbed in AD skin (14). Transdermal epithelial water loss (TEWL) is an indirect skin barrier function test that evaluates the degree to which water passes from inside to outside in the upper layer of the epidermis (14). Previous studies demonstrated that TEWL was significantly low after treatment in CAD (15), and a positive correlation between TEWL and severity of skin barrier dysfunction had been reported (14, 16).

Korea has a high proportion of people living in apartments with their dogs. Due to space limitations, the number of outdoor activities is very limited; consequently, many dogs spend most of their time indoors. Indoor AD in dogs seems to be very closely related to the living environment in Korea. A better understanding of the relationship between exposures to HDM, the most important of indoor environmental allergens in AD, can help prevent skin symptoms from aggravating in CAD. Therefore, our study aimed to establish a comprehensive long-term strategy for AD treatment by exploring the association between dog residential environment, indoor HDM level, and AD severity. To the best of our knowledge, this is the first study to compare and analyze the indoor HDM concentration with dogs' residential environment and the clinical severity of AD.

## 2. Materials and methods

### 2.1. Study population and exclusion criteria

All animal studies were reviewed and approved by both of the Animal Ethics Committee of Chonnam National University and the Institutional Review Board of Chonnam National University (authorization no. 2021–163 and 1040198-220228-HR-017-01). And the studies were performed in accordance with the guidelines and regulations for the Ministry of Food and Drug Safety of South Korea. Client-owned 35 dogs with AD and 13 healthy dogs without AD were included in this study. All the 13 healthy dogs of the control group and 35 dogs of the CAD group visited the teaching veterinary hospital for dermatological referral or physical examination. CAD was diagnosed based on Favrot's criteria (17). Before participating, written informed consents were obtained from the owners.

Skin scraping was performed for all dogs to exclude dogs that had parasitic infections; dogs that had systemic glucocorticoids applied within 4 weeks prior to the clinical evaluation were ruled out because the medication used could affect their AD symptoms. Dogs that lived outdoors and spent more than two-thirds of their day outdoors were also excluded from this study.

### 2.2. Survey for residential environments

Residential environments were assessed by questionnaires that were completed by dog owners. All methods were performed in accordance with relevant guidelines and regulations. The questionnaire consisted of 10 questions, which were later used for analysis. The questions were as follows: (i) What is your housing type? (ii) What are the surroundings near your residence? (iii) How many times do you ventilate the house a day? (v) Have you moved recently?

### 2.3. Assessment of the severity of AD and epidermal skin barrier function

In the CAD group, the severity of AD was evaluated through Canine atomic durability extents and Severity Index-04 (CADESI-04), and Pruritus visual analog scale (PVAS). CADESI-04 and PVAS were evaluated in the same way as in previously reported literature (18, 19). The evaluation sites of CADESI-04 included (i) ear pinnae (ii) forefeet (iii) axillae (iv) flexural areas (v) ventral tail (vi) inguinal area and (vii) flanks. Skin lesions (erythema, lichenification, and alopecia/excoriation) for each site were scored as none (score 0), mild (score 1), moderate (score 2), and severe (score 3) and evaluated as a total score (18). The clients assessed their dogs' PVAS by the evaluation table consisting of 0 points (Not itchy) to 10 points (Extremely itchy) (19). TEWL was measured in all dogs by GPOWERSkin Barrier® (GPOWER Inc, Seoul, South Korea) devices of the closed chamber system. All the TEWL values were measured after stabilizing for 30 min in a room with temperatures ranging between 24 and 26°C and RH of between 40 and 60%. The average of the values repeatedly measured three times in three anatomical sites, pinna, axial, and inguinal were recorded (20). Those sites were selected based on previous studies (20, 21).

### 2.4. Dust sampling and HDM allergen evaluation

Dust samples were collected using a standard household vacuum cleaner equipped with a 10 µm filter paper. The living room and the beddings of the dogs were vacuumed 1 x 1 m<sup>2</sup> for 2 min. The collected dust samples were sealed in a plastic bag and stored at –20°C until they were analyzed. For extract preparation, 2.0 mL PBS-T (0.05% Tween 20 in phosphate-buffered saline, pH 7.4) was added to 500 mg of the fine dust. After stirring at room temperature for 2 h, they were centrifuged at 2,500 rpm for 20 min at 4°C, removed volume supernatant, and stored at 20°C. The levels of *Der f 1* were measured through ELISA 2.0 kit (Indoor Biotechnologies, Charlottesville VA, USA) for measuring *D. farinae* allergen and *Der p 1* (Indoor Biotechnologies, Charlottesville VA, USA) for measuring *D. pteronyssinus* allergen.

### 2.5. Measurement of temperature and RH

The indoor temperature and RH for 26 CAD dogs and 11 control dogs were measured by an indoor air quality monitoring station (AirGuard K®, Kweatherco. Ltd, Seoul, South Korea). The average value measured for 48 h from the date of dust collection and clinical evaluation was recorded. The group above 40%, which is known as an ideal RH for HDM to survive for prolonged periods, was classified as a high RH group and <40% as a low RH group (22).

### 2.6. Statistical analysis

All values were expressed as mean and standard deviation and preceded normality evaluation. Independence was tested among the survey data through Fisher's exact test for housing type,

TABLE 1 Epidemiologic characteristics of 35 AD dogs and 13 healthy dogs.

Signalment		AD dogs (n = 35)		Healthy dogs (n = 13)	
		n	%	n	%
<b>Sex</b>					
	Intact male	0	0.0	1	7.7
	Castrated male	16	45.7	6	46.2
	Intact female	5	14.3	0	0.0
	Spayed female	14	40.0	6	46.2
<b>Age</b>					
	<4 years	5	14.3	5	38.5
	4–7 years	11	31.4	3	23.0
	>7 years	19	54.3	5	38.5
<b>Breed</b>					
	Maltese	12	34.3	3	23.7
	Bichon frise	5	14.3	0	0
	Poodle	4	11.4	4	30.8
	American cocker spaniel	3	8.6	0	0
	Pomeranian	2	5.7	0	0
	Shi-tzu	2	5.7		
	Mixed	2	5.7	4	30.8
	Others <sup>a</sup>	5	14.3	2	15.3

<sup>a</sup>Dachshunds, French Bulldog, Boston Terrier, Chihuahua, Golden Retriever, Miniature pinscher.

surroundings, and recent moving, and test for daily ventilation times was done through chi-square. The Shapiro-Wilk tests were conducted to test the normality of all measurement data, but the normality was not satisfied. Therefore, we used the Mann-Whitney U test and Krustal-Wallis test for testing differences between means. Multiple comparisons were conducted followed by Krustal-Wallis test. Spearman test was performed to analyze the correlation between *Der f 1* concentration and AD severity index. For all analyses, statistical significance was determined at a value of  $P < 0.05$ . Every statistical test was performed with statistical software (Version 9.0; GraphPad Prism, Inc., La Jolla, CA).

## 3. Results

### 3.1. Patient's epidemiological characteristics

The study included the CAD group consisting of 35 dogs with atopic dermatitis and the control group consisting of 13 healthy dogs. The epidemiologic characteristics of each group are summarized in Table 1. The CAD group consisted of 16 males, which were all castrated (45.7%) and 19 females [5 intact (14.3%), and 14 spayed (40.0%)]. Based on the age at the time of analysis, the average age of the CAD group was  $7.23 \pm 3.52$  years old (range 1–15 years). Maltese was the primary breed ( $n = 12$ , 34.3%), followed by Bichon Frise ( $n = 5$ , 14.3%), Poodle ( $n = 4$ , 11.4%), and American Cocker Spaniel ( $n = 3$ , 8.6%). And Pomeranian, Shi-tzu and Mixed breed were followed ( $n = 2$ , 5.7% each). Dachshunds, French Bulldog, Boston Terrier, Chihuahua and Golden Retriever were also included ( $n = 1$ , 2.8% each). The control group consists of an intact male (7.7%), 6 castrated

males (46.2%) and 6 spayed females (40.0%). The average age was  $5.84 \pm 3.57$  years old (range 2–13). Mixed breed and Poodle were mostly included ( $n = 4$ , 30.8% each), followed by Maltese ( $n = 3$ , 23.7%), Chihuahua, and Miniature pincher ( $n = 1$ , 7.7% each).

### 3.2. Residential survey results

The results are graphitized in Figure 1. On the question of the housing type, 91.4% of the CAD group ( $n = 32$ ) and all control groups ( $n = 13$ ) answered that they lived in apartments ( $P = 0.33$ ). 37.14% ( $n = 13$ ) of the CAD group and 53.9% ( $n = 7$ ) of the control group answered that there were mountains or forests near their houses, while others answered that there were paved roads and housing complexes near their houses ( $P = 0.17$ ). For the ventilation times, 34.3% ( $n = 12$ ), 31.4% ( $n = 11$ ), 34.3% ( $n = 12$ ) of the CAD group answered once a day, twice a day, and more than three times a day, respectively. 2% ( $n = 1$ ), 8.3% ( $n = 4$ ), and 50% ( $n = 8$ ) of the control group answered that they ventilated once, twice, and more than three times a day, respectively ( $P = 0.1242$ ). 6.8% of the CAD and the control group ( $n = 3$ , each) moved to a new house recently ( $P = 0.19$ ).

Correlation between indoor HDM concentration, residential survey, AD severity index and indoor climates The *Der f 1* and *Der p 1* concentrations in the dust samples were measured for all cases. *Der p 1* was not detected in most samples, so it was excluded from this study. *Der f 1* concentrations for CAD group and control group were not statistically significant, but the mean value was higher in CAD groups (CAD;  $1.472 \pm 2.04$   $\mu\text{g/g}$ ;  $n = 35$ , control;  $1.014 \pm 1.342$   $\mu\text{g/g}$ ;  $n = 13$ ,  $P = 0.4$ ). The results were graphitized in Figure 2.

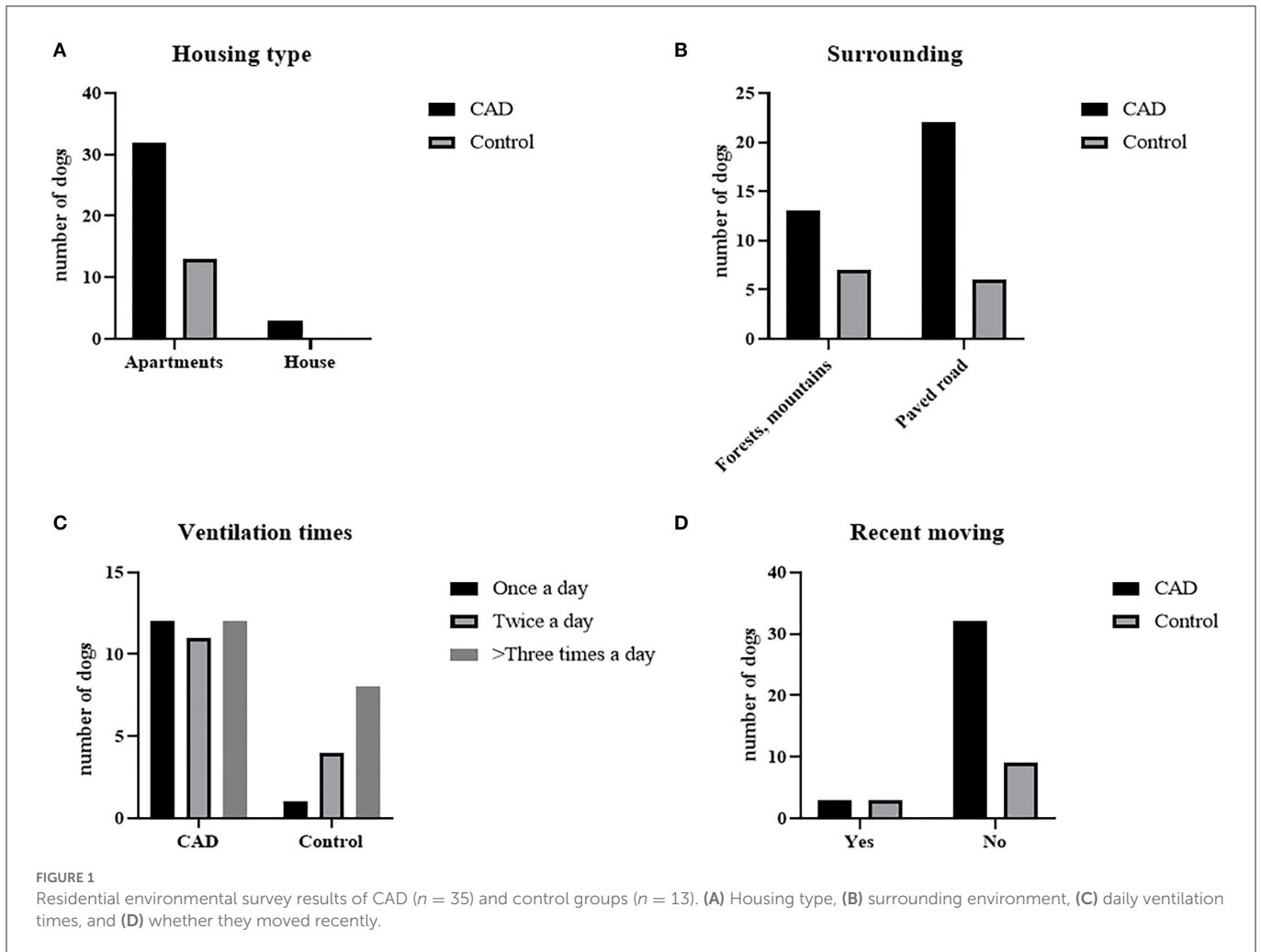


Table 2 summarizes the data comparing the residential environmental survey analysis with the *Der f 1* concentration. There was a significant difference in *Der f 1* concentration according to the responses on the housing type and the surroundings in the CAD group. In the Housing type, the group who answered that they lived in an apartment showed a higher *Der f 1* concentration than the detached house (total;  $**P = 0.0031$ , CAD;  $**P = 0.0035$ ). All the dogs in control groups answered that they lived in apartments thus they were excluded from the statistical analysis. The *Der f 1* concentration was significantly higher in the group that answered that there were mountains or forests around their houses than in the group that did not (total;  $***P = 0.0006$ , CAD;  $**P = 0.0011$ ). In the control group, the dogs who were living near mountains or forests had a higher *Der f 1* concentration, but it was not statistically significant ( $P = 0.1474$ ). There was no association in *Der f 1* with the daily ventilating times and recent moving. These results are graphitized in Figure 3.

Indoor temperature and RH were measured in 26 CAD and 11 control dog houses. The mean indoor temperature for the 37 dogs' houses was  $25.99 \pm 2.485^\circ\text{C}$  and the RH was  $43.06 \pm 8.651\%$ . The RH for each group was compared in the housing type and surroundings, where the *Der f 1* concentration was significantly different in the residential survey. In the Housing type, there was no significant difference in the RH between the group living in apartments ( $n = 34$ )

and the group living in detached houses ( $n = 3$ ) (apartment:  $43.48 \pm 8.681\%$ , detached house:  $38.30 \pm 8.163\%$ ,  $P = 0.1725$ ). The RH was significantly higher in the group living near mountains ( $n = 16$ ) than others ( $n = 21$ ) (mountain:  $46.82 \pm 6.518$ , paved road:  $40.20 \pm 9.107$ ,  $**P = 0.0094$ ). A high RH group ( $n = 26$ ) and a low RH group ( $n = 11$ ) were divided based on 40%, the *Der f 1* concentration was significantly high in the high humidity group (high RH:  $1.305 \pm 1.713 \mu\text{g/g}$ , low RH:  $0.3534 \pm 0.536 \mu\text{g/g}$ ,  $*P = 0.0349$ ). The results were showed in Figure 4. Analysis was performed using the Spearman correlation coefficient between *Der f 1* and CADESI-04, PVAS, and TEWL in the CAD group ( $n = 35$ ). CADESI-04 ( $r = -0.045$ ,  $P = 0.3987$ ), PVAS ( $r = -0.1054$ ,  $P = 0.2733$ ) had negative correlation with *Der f 1* without statistical significance. TEWL ( $r = -0.4497$ ,  $*P = 0.0034$ ) showed moderate negative correlation with statistical significance. The results were graphitized in Figure 5.

## 4. Discussion

Climatic conditions such as temperature and humidity significantly affect HDM's growth, survival, and allergen production (23, 24). Globally, regional characteristics are associated with HDM fauna, and the sensitization risk for HDM is considerably high in subtropical or tropical regions with high temperature

and humidity (24, 25). Korea's climate has the characteristics of the north-east region, similar to the US and Europe, where *D. farinae* is the dominant species that are resistant to relatively low temperatures and lower humidity than *D. pteronyssinus* (26). Although we measured both *Der f 1* and *Der p 1* allergens in our study, *Der p 1* was not detected in most of

the samples, which was considered to be characterized by the geographical area.

HDM is also affected by the urbanization and industrialization of a city (27). As a result of the urban heat island (UHI) effects, urbanization increases general temperature of the atmosphere and decreases in RH (27). In addition, urbanization affects mite biology by causing air pollution and climate change. The type and frequency of HDM sensitized by the elderly and young in places where urbanization progressed rapidly were different in previous studies (27, 28). The analysis comparing the concentration of *Der f 1* with the residential environment was significantly higher in apartments than in detached houses and in the groups with mountains or forests near the houses. However, the number of dogs living in detached houses was small ( $n = 3$ ), and all three dogs were included in the group that answered that there are mountains or forests near the house. Thus, it can be concluded that the geographical characteristics involved in the surroundings rather than the effect of the housing type affected the *Der f 1* concentration in our study.

Creation of urban green areas have been suggested as a way of improving environmental effects caused by urbanization and industrialization. The composition of the green space in the city alleviates the atmospheric particle matter pollution (29). The environment seemed to affect AD. A previous study described that green area is inversely associated with AD in humans (30). Living near the urban green area could reduce exposure to traffic-related air pollution, and consequently, prevent effects that have been reported in infantile AD (31). In addition to alleviating air pollution, the urban green area is known to have cooling and humidifying effects through solar radiation prevention and evapotranspiration (32). Living near the urban green areas has a relatively higher RH and promotes an environment suitable for the growth of HDM. Our study presumed that the *Der f 1* concentration was significantly higher in houses near mountains or forests due to the UHI phenomenon.

Previous studies have shown that air pollution becomes a risk factor for expressing indoor allergen exposure and allergic disease in humans. In particular, the quality air in the surrounding has a significant effect on the severity of asthma (8, 33, 34). In the case of

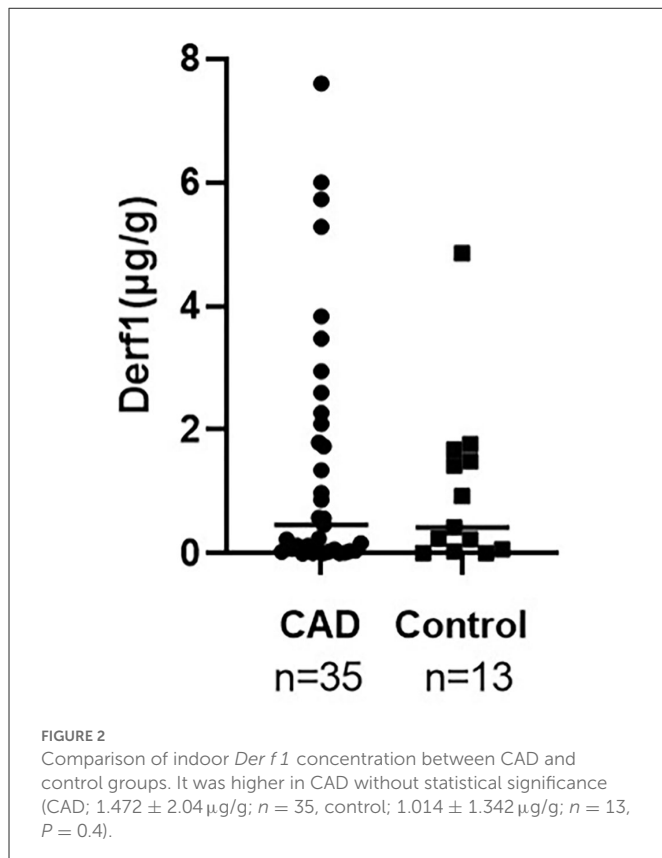
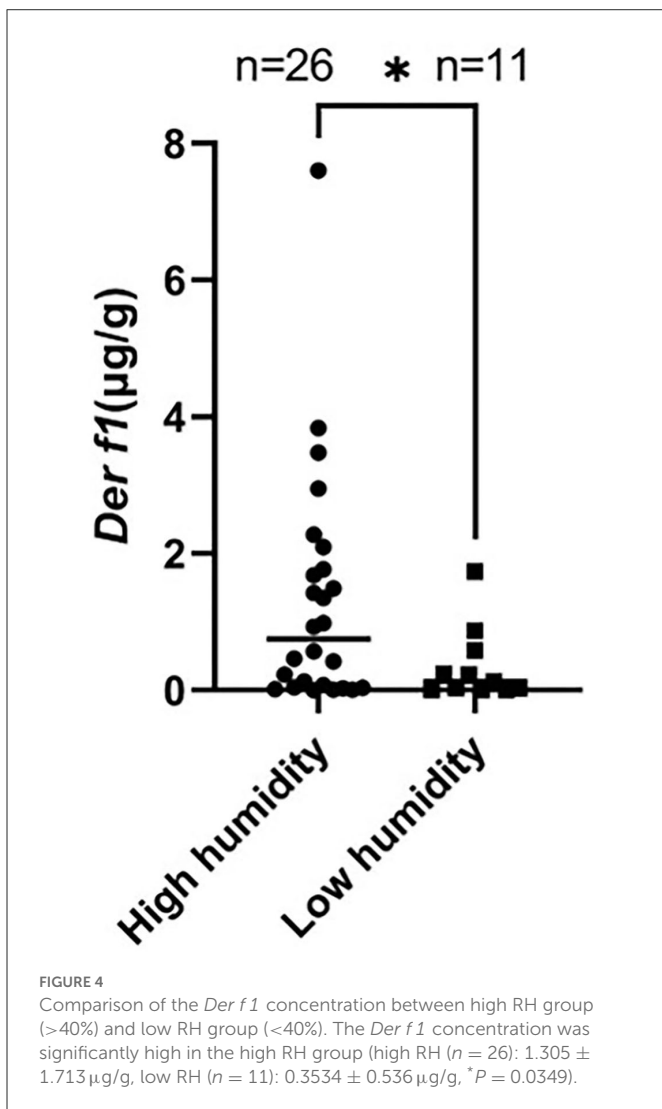
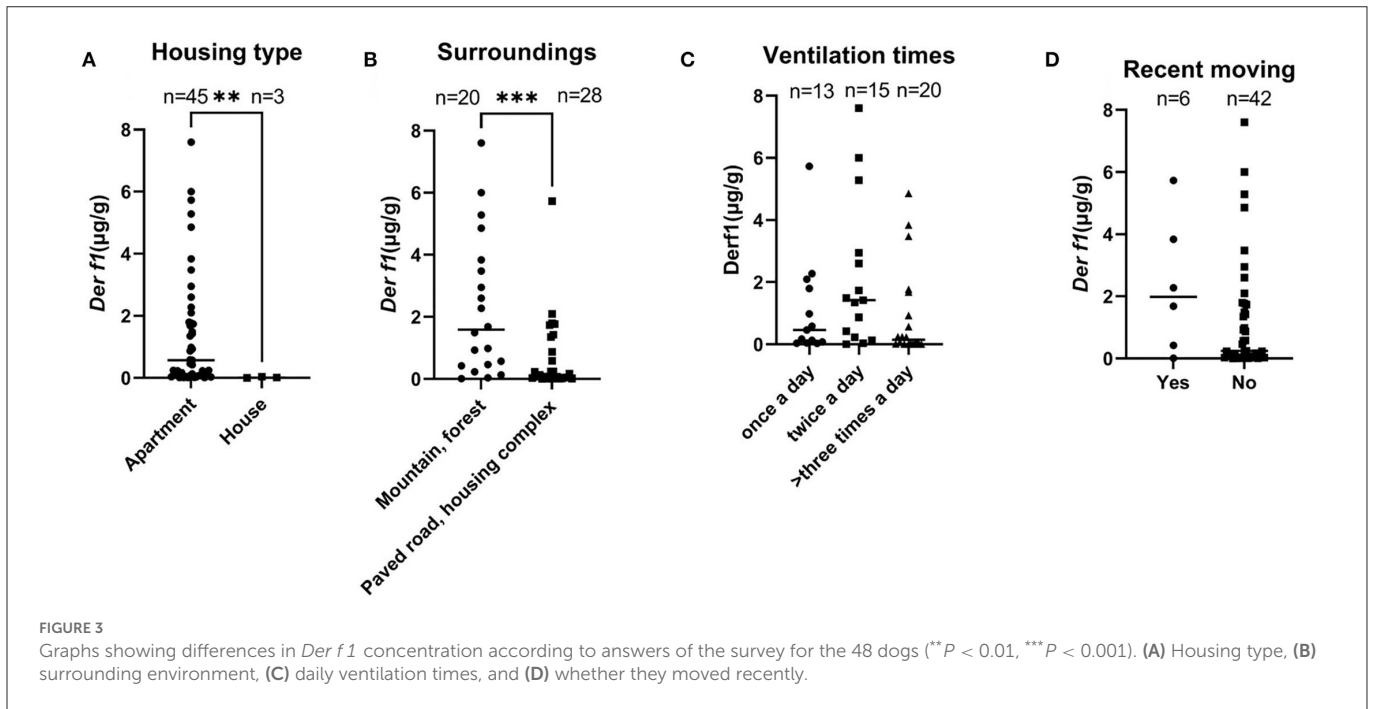


TABLE 2 The association of indoor *Der f 1* concentration ( $\mu\text{g/g}$ ) with residential survey.

Question	Answer (Mean $\pm$ SD)	Total ( $N = 48$ )	CAD ( $n = 35$ )	Control ( $n = 13$ )
Housing type	House	0.015 $\pm$ 0.018	0.015 $\pm$ 0.018	N/A
	Apartments	1.437 $\pm$ 1.904	1.608 $\pm$ 2.084	1.014 $\pm$ 1.342
	P-value	**0.0031	**0.0035	
Surrounding	Mountains, forests	2.293 $\pm$ 2.241	2.784 $\pm$ 2.416	1.379 $\pm$ 1.655
	Paved road, housing complex	0.6732 $\pm$ 1.203	0.696 $\pm$ 1.307	0.589 $\pm$ 0.795
	P-value	***0.0006	**0.0011	0.1474
Ventilation times	Once a day	1.110 $\pm$ 1.613	1.199 $\pm$ 1.650	0.038 $\pm$ 0.0
	Twice a day	2.143 $\pm$ 2.368	2.598 $\pm$ 2.620	0.8919 $\pm$ 0.6593
	$\geq$ Three times a day	0.9067 $\pm$ 1.474	0.7127 $\pm$ 1.386	1.198 $\pm$ 1.649
	P-value	0.0712	0.0972	0.6424
Recent moving	Yes	2.327 $\pm$ 2.156	3.948 $\pm$ 1.727	0.707 $\pm$ 0.872
	No	1.208 $\pm$ 1.817	1.240 $\pm$ 13.93	1.107 $\pm$ 1.48
	P-value	0.0899	*0.0127	0.4585

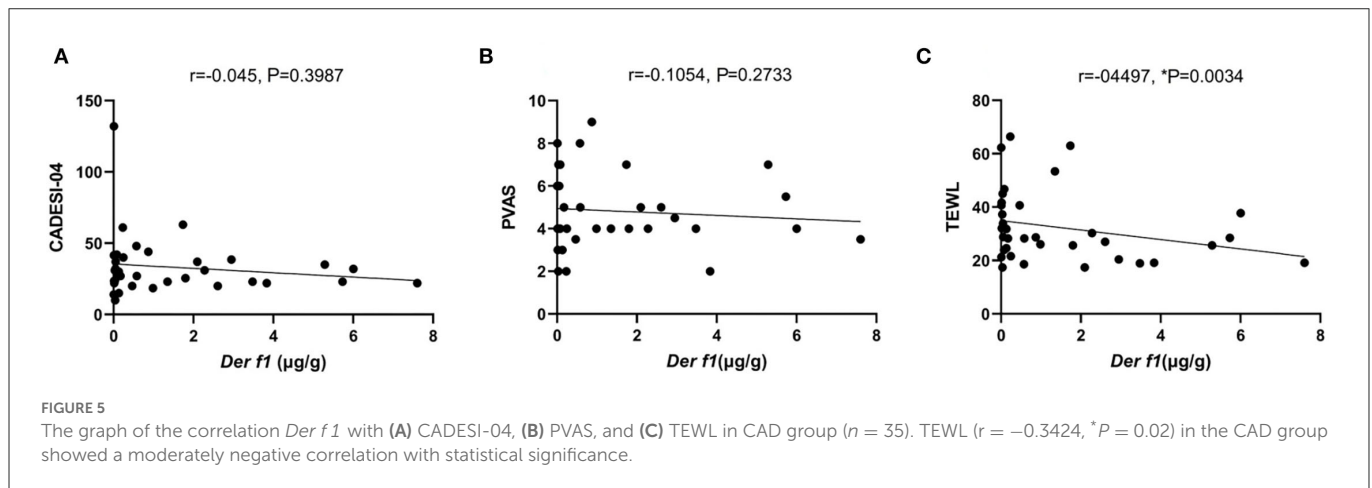
\* $P < 0.05$ , \*\* $P < 0.01$ , \*\*\* $P < 0.001$ .



AD, there are fewer related studies than allergic rhinitis or asthma, but there are some reports that suggest that higher HDM levels worsen AD severity (9, 10). However, one of the studies showed these results only in patients who were not sensitized to HDM and were not related to patients that were sensitized (10). In another study, the AD was severe in a group with high *Der p 1* and animal dander allergen, but no effect was found by *Der p 1* concentration alone (9). There was no significant association when comparing PVAS and CADESI in our results, and there similarities with the human reports. Comparing the human studies and our results, it was not related to AD severity when comparing *Der f 1* concentration alone in dogs. However, it is expected that there will be complex associations such as relationships between other allergens in the dust. In addition, HDM sensitization through the intradermal test or specific-serum IgE was not analyzed in this study. In future studies, clearer results could be obtained by adding other allergen in the dust and HDM sensitization to the analysis.

TEWL is an indicator that reflects the amount of the moisture evaporating through extracellular substrates. It is affected by the skin permeability which is determined by the action of keratinocytes and lipids filling between them and is accepted as an indicator of skin barrier function (14). In our results, TEWL and *Der f 1* had a negative correlation in the CAD group. That meant the higher the indoor *Der f 1* concentration, the more substantial the skin barrier function in the CAD group. These results can be related to the high *Der f 1* concentration in the group living near the green area in our study. Previous studies investigated low RH affects skin barrier function and durability in humans and mice (35–39). However, the studies never analyzed the correlation between RH and AD in dogs before.

Considering that hydrating the skin method alleviates AD symptoms in dogs, and the fact that dry skin is the main symptom of CAD (40, 41), RH is expected to affect CAD in humans. Additionally, the inverse correlation between endotoxin and AD was previously reported in humans and dogs (11, 42). It appeared



that the lipopolysaccharide (LPS) dose is a determining factor in the course of allergic responses. Low doses of inhaled LPS promoted T helper 2 cell responses to the sensitizing antigen and eosinophilic inflammation, whereas high doses of LPS induced protective T helper 1 cell responses by downregulation of Th2-type cytokines, preventing eosinophilic inflammation, and airway hyperresponsiveness by induction of neutrophil recruitment (43, 44). Endotoxin or bacterial LPS is a component of HDM known to mediate proinflammatory responses *via* the Toll-like receptor innate immune signaling pathway and correlated with asthma risk in humans (45). HDM has a microbiome comprising several bacteria and fungi, and it is expected that HDM extracts contain endotoxins (46). Therefore, a high HDM concentration suggests that the dust has a high level of endotoxin. Although the concentration of endotoxin in the dust was not measured in this study, it is presumed that the related mechanism influenced the TEWL values.

Since the *Der f1* concentration on average was higher in the CAD group, it could be concluded that the *Der f1* concentration was independent of CAD occurrence. Further studies through more CAD and control groups will be needed to reveal the association with the occurrence of CAD. In addition, immune sensitization to HDM analysis using neither intradermal test (IDT) nor serum IgE was not performed in this study. It is expected that more significant results could be derived if immune sensitization and *Der f1* concentration are analyzed. In humans, a cut-off value in which *Der f1* concentration can cause an immune response has been studied at  $2 \mu\text{g/g}$  (17), but it has never been evaluated in dogs. If the cut-off value is established in future studies, IDT or serum IgE concentration evaluation and analysis of RH are performed, it will be possible to set the optimized RH value to reduce *Der f1* concentration and symptoms in CAD patients.

To the best of our knowledge, this is the first study to analyze the relationship between AD severity, skin barrier function, and indoor HDM concentration in dogs. It has been revealed that urban green areas can affect indoor *Der f1* concentration and skin barrier function. RH, as one of the factors that can increase *Der f1* concentration, can lower TEWL, so it can be suggested that focusing on environmental changes can increase the RH of the living environment in CAD patients rather than *Der f1* concentration itself will help alleviate patient

symptoms. It also suggests the possibility that HDM containing LPS prevent worsening atopic symptoms when presented in high doses. The study may contribute to the important issues regarding AD in veterinary and human medicine, because our study suggests the potential of dogs as a spontaneous disease model for indoor environmental-related AD under the concept of “One Health.”

## 5. Conclusion

This study is the first to analyze the relationship between AD severity, skin barrier function, and indoor HDM concentration in dogs. It has been revealed that urban green areas can affect indoor *Der f1* concentration and skin barrier function. Indoor RH above 40% may play a more important role in alleviating CAD signs than indoor *Der f1* concentrations.

## Data availability statement

The original contributions presented in the study are included in the article/supplementary material, further inquiries can be directed to the corresponding author.

## Ethics statement

The animal study was reviewed and approved by the Animal Ethics Committee of Chonnam National University and the Institutional Review Board of Chonnam National University (authorization nos. 2021-163 and 1040198-220228-HR-017-01). Written informed consent was obtained from the owners for the participation of their animals in this study.

## Author contributions

JK and J-HL investigated the study. JK acquired and analyzed the data and wrote the manuscript mainly. H-JK and YS designed the study, acquired the fund, edited the manuscript, and supervised

the study. All authors contributed to the article and approved the submitted version.

## Funding

This research was supported by the Basic Science Research Program through the National Research Foundation of Korea (NRF), funded by the Ministry of Education (NRF-2020R1A2C2005364).

## Acknowledgments

The authors are grateful to all dogs and dog owners for participating in our investigations.

## References

- Nuttall TJ, Hill PBB, Besignor E, Willemse T. House dust and forage mite allergens and their role in human and canine atopic dermatitis. *Vet Dermatol.* (2006) 17:223–35. doi: 10.1111/j.1365-3164.2006.00532.x
- Besignor E, Carlotti DN. Sensitivity patterns to house dust mites and forage mites in atopic dogs: 150 cases. *Vet Dermatol.* (2002) 13:39–44. doi: 10.1046/j.0959-4493.2001.00270.x
- Jeong KY, Park JW, Hong CS. House dust mite allergy in Korea: the most important inhalant Allergen in current and Future. *Allergy Asthma Immunol Res.* (2012) 4:313. doi: 10.4168/aaair.2012.4.6.313
- Kuehr J, Frischer T, Meinert R, Barth R, Schraub S, Urbaneck R, et al. Sensitization to mite allergens is a risk factor for early and late onset of asthma and for persistence of asthmatic signs in children. *J Allergy Clin Immunol.* (1995) 95:655–62. doi: 10.1016/S0091-6749(95)70168-0
- Colloff MJ. Exposure to house dust mites in homes of people with atopic dermatitis. *Br J Dermatol.* (1992) 127:322–7. doi: 10.1111/j.1365-2133.1992.tb00449.x
- Krämer U, Lemmen C, Bartusel E, Link E, Ring J, Behrendt H. Current eczema in children is related to Der f 1 exposure but not to Der p 1 exposure. *Br J Dermatol.* (2006) 154:99–105. doi: 10.1111/j.1365-2133.2005.07003.x
- Ricci G, Patrizi A, Specchia F, Menna L, Bottau P, D'Angelo V, et al. Effect of house dust mite avoidance measures in children with atopic dermatitis. *Br J Dermatol.* (2000) 143:379–84. doi: 10.1046/j.1365-2133.2000.03666.x
- Khweek AA, Kim E, Joldrichsen MR, Amer AO, Boyaka PN. Insights into mucosal innate immune responses in house dust mite-mediated allergic asthma. *Front Immunol.* (2020) 11:534501. doi: 10.3389/fimmu.2020.534501
- Cid BJ, Perez-Matellana G, Iturrriaga C, Zambrano MJ, Vives MI, Valenzuela PM, et al. Is there an association between indoor allergens and the severity of atopic dermatitis? *Int J Dermatol.* (2018) 58:433–9. doi: 10.1111/ijd.14281
- Kim J, Lee S, Woo S, Han Y, Lee JH, Lee I, et al. The indoor level of house dust mite allergen is associated with severity of atopic dermatitis in children. *J Korean Med Sci.* (2013) 28:74–9. doi: 10.3346/jkms.2013.28.1.74
- Looringh van Beeck FA, Hoekstra H, Brunekreef B, Willemse T. Inverse association between endotoxin exposure and canine atopic dermatitis. *Vet J.* (2011) 190:215–9. doi: 10.1016/j.tvjl.2010.10.027
- Olivry T, Hill PB. The ACVD task force on canine atopic dermatitis (IX): the controversy surrounding the route of allergen challenge in canine atopic dermatitis. *Vet Immunol Immunopathol.* (2001) 81:219–25. doi: 10.1016/S0165-2427(01)00311-7
- Halbert AR, Weston WL, Morelli JG. Atopic dermatitis: Is it an allergic disease? *J Am Acad Dermatol.* (1995) 33:1008–18. doi: 10.1016/0190-9622(95)90295-3
- Shimada K, Yoshihara T, Yamamoto M, Konno K, Momoi Y, Nishifujii K, et al. Transepidermal water loss (TEWL) reflects skin barrier function of dog. *J Vet Med Sci.* (2008) 70:841–3. doi: 10.1292/jvms.70.841
- Cornegliani L, Vercelli A, Sala E, Marsella R. Transepidermal water loss in healthy and atopic dogs, treated and untreated: a comparative preliminary study. *Vet Dermatol.* (2012) 23:41–4. doi: 10.1111/j.1365-3164.2011.01003.x
- Santoro D, Marsella R, Pucheu-Haston CM, Eisenschenk MNC, Nuttall T, Bizikova P. Review: pathogenesis of canine atopic dermatitis: skin barrier and host-micro-organism interaction. *Vet Dermatol.* (2015) 26:84–e25. doi: 10.1111/vde.12197
- Kuehr J, Frischer T, Meinert R, Barth R, Forster J, Schraub S, et al. Mite allergen exposure is a risk for the incidence of specific sensitization.

## Conflict of interest

The authors declare that the research was conducted in the absence of any commercial or financial relationships that could be construed as a potential conflict of interest.

## Publisher's note

All claims expressed in this article are solely those of the authors and do not necessarily represent those of their affiliated organizations, or those of the publisher, the editors and the reviewers. Any product that may be evaluated in this article, or claim that may be made by its manufacturer, is not guaranteed or endorsed by the publisher.

- J Allergy Clin Immunol.* (1994) 94:44–52. doi: 10.1016/0091-6749(94)90070-1
- Olivry T, Saridomichelakis M, Nuttall T, Besignor E, Griffin CE, Hill PB, et al. Validation of the canine atopic dermatitis extent and severity index (CADESI)-4, a simplified severity scale for assessing skin lesions of atopic dermatitis in dogs. *Vet Dermatol.* (2014) 25:77–85. doi: 10.1111/vde.12107
- Hill PB, Lau P, Rybnicek J. Development of an owner-assessed scale to measure the severity of pruritus in dogs. *Vet Dermatol.* (2007) 18:301–8. doi: 10.1111/j.1365-3164.2007.00616.x
- Oh WS, Oh TH. Measurement of transepidermal water loss from clipped and unclipped anatomical sites on the dog. *Aust Vet J.* (2009) 87:409–12. doi: 10.1111/j.1751-0813.2009.00481.x
- Favrot C, Steffan J, Seewald W, Picco F. A prospective study on the clinical features of chronic canine dermatitis and its diagnosis. *Vet Dermatol.* (2010) 21:23–31. doi: 10.1111/j.1365-3164.2009.00758.x
- Prasad C, Hogan MB, Peele K, Wilson NW. Effect of evaporative coolers on skin test reactivity to dust mites and molds in a desert environment. *Allergy Asthma Proc.* (2009) 30:624–7. doi: 10.2500/aap.2009.30.3290
- Acevedo N, Zakzuk J, Caraballo L. House dust mite allergy under changing environments. *Allergy Asthma Immunol Res.* (2019) 11:450–69. doi: 10.4168/aaair.2019.11.4.450
- Fernández-Caldas E, Calvo VI. Mite allergens. *Curr Allergy Asthma Rep.* (2005) 5:402–10. doi: 10.1007/s11882-005-0014-z
- Andiappan AK, Puan KJ, Lee B, Nardin A, Poidinger M, Connolly J, et al. Allergic airway diseases in a tropical urban environment are driven by dominant mono-specific sensitization against house dust mites. *Allergy.* (2014) 69:501–9. doi: 10.1111/all.12364
- Zock J, Heinrich J, Jarvis D, Verlato G, Norbäck D, Plana E, et al. Distribution and determinants of house dust mite allergens in Europe: the European community respiratory health survey II. *J Allergy Clin Immunol.* (2006) 118:682–90. doi: 10.1016/j.jaci.2006.04.060
- Liao E, Ho C, Tsai J. Prevalence of tyrophagus putrescentiae hypersensitivity in subjects over 70 years of age in a veterans' nursing home in Taiwan. *Int Arch Allergy Immunol.* (2010) 152:368–77. doi: 10.1159/000288290
- Park HJ, Lim HS, Park KH, Lee JH, Park JW, Hong CS. Changes in allergen sensitization over the last 30 years in Korea respiratory allergic patients: a single-center. *Allergy Asthma Immunol Res.* (2014) 6:434–43. doi: 10.4168/aaair.2014.6.5.434
- Lee JY, Lamichhane DK, Lee M, Ye S, Kwon JH, Park MS, et al. Preventive effect of residential green space on infantile atopic dermatitis associated with prenatal air pollution exposure. *Int J Environ Res Public Health.* (2018) 15:102. doi: 10.3390/ijerph15010102
- Kim HJ, Min JY, Kim HJ, Min KB. Association between green areas and allergic disease in Korean adults: a cross-sectional study. *Ann Occup Environ Med.* (2020) 32:e5. doi: 10.35371/aocem.2020.32.e5
- Andrusaityte S, Grazuleviciene R, Kudzyte J, Bernotiene A, Dedele A, Nieuwenhuijsen M. Associations between neighbourhood greenness and asthma in preschool children in Kaunas, Lithuania: a case-control study. *BMJ Open.* (2016) 6:e010341. doi: 10.1136/bmjopen-2015-010341
- Xiao XD, Dong L, Yan H, Yang N, Xiong Y. The influence of the spatial characteristics of urban green space on the urban heat island effect in Suzhou Industrial Park. *Sustainable Cities Soc.* (2018) 40:428–39. doi: 10.1016/j.scs.2018.04.002



33. Vallance G, McSharry C, Wood S, Thomson NC. House dust mite control measures in the treatment of asthma. *Ther Clin Risk Manag.* (2006) 2:347–54. doi: 10.2147/tcrm.2006.2.4.347
34. Calderón MA, Linneberg A, Kleine-Tebbe J, De Blay F, de Rojas DHF, Virchow JC, et al. Respiratory allergy caused by house dust mites: What do we really know? *J Allergy Clin Immunol.* (2015) 136:38–48. doi: 10.1016/j.jaci.2014.10.012
35. Denda M, Sato J, Masuda Y, Tsuchiya T, Koyama J, Kuramoto M, et al. Exposure to a dry environment enhances epidermal permeability barrier function. *J Invest Dermatol.* (1998) 111:858–63. doi: 10.1046/j.1523-1747.1998.00333.x
36. Sato J, Denda M, Nakanishi J, Koyama J. Dry condition affects desquamation of stratum corneum *in vivo*. *J Dermatol Sci.* (1998) 18:163–9. doi: 10.1016/S0923-1811(98)00037-1
37. Egawa M, Oguri M, Kuwahara T, Takahashi M. Effect of exposure of human skin to a dry environment. *Skin Res Technol.* (2002) 8:212–8. doi: 10.1034/j.1600-0846.2002.00351.x
38. Reinikainen LM, Jaakkola JJ, Seppänen O. The effect of air humidification on symptoms and perception of indoor air quality in office workers: a six-period cross-over trial. *Arch Environ Health.* (1992) 47:8–15. doi: 10.1080/00039896.1992.9935938
39. Uter W, Gefeller O, Schwanzitz HJ. An epidemiological study of the influence of season (cold and dry air) on the occurrence of irritant skin changes of the hands. *Br J Dermatol.* (1998) 138:266–72. doi: 10.1046/j.1365-2133.1998.02072.x
40. Santoro D. Therapies in canine atopic dermatitis. *Vet Clin North Am Small Anim Pract.* (2019) 49:9–26. doi: 10.1016/j.cvsm.2018.08.002
41. Panzuti P, Vidémont E, Fantini O, Fardouet L, Noël G, Cappelletti J, et al. A moisturizer formulated with glycerol and propylene glycol accelerates the recovery of skin barrier function after experimental disruption in dogs. *Vet Dermatol.* (2020) 31:344–e89. doi: 10.1111/vde.12859
42. Braun-Fahrlander C, Riedler J, Herz U, Eder W, Waser M, Grize L, et al. Environmental exposure to endotoxin and its relation to asthma in school-age children. *N Engl J Med.* (2002) 347:869–77. doi: 10.1056/NEJMoa020057
43. Eisenbarth SC, Piggott DA, Huleatt JW, Visintin I, Herrick CA, Bottomly K. Lipopolysaccharide-enhanced, toll-like receptor 4-dependent t helper cell type 2 responses to inhaled antigen. *J Exp Med.* (2002) 196:1645–51. doi: 10.1084/jem.20021340
44. Lundy SK, Berlin AA, Lukacs NW. Interleukin-12-independent down-modulation of cockroach antigen-induced asthma in mice by intranasal exposure to bacterial lipopolysaccharide. *Am J Pathol.* (2003) 163:1961–8. doi: 10.1016/S0002-9440(10)63554-7
45. Celedón JC, Milton DK, Ramsey CD, Litonjua AA, Ryan L, Platts-Mills TA, et al. Exposure to dust mite allergen and endotoxin in early life and asthma and atopy in childhood. *J Allergy Clin Immunol.* (2007) 120:144–9. doi: 10.1016/j.jaci.2007.03.037
46. Hubert J, Nesvorna M, Kopecky J, Erban T, Klimov P. Population and culture age influence the microbiome profiles of house dust mites. *Microb Ecol.* (2019) 77:1048–66. doi: 10.1007/s00248-018-1294-x