



OPEN ACCESS

EDITED BY

Nora Mestorino,
National University of La
Plata, Argentina

REVIEWED BY

Jian Wang,
Northeast Agricultural
University, China
Qi Shan,
Pearl River Fisheries Research Institute
(CAFS), China
Khaled Abo-EL-Sooud,
Cairo University, Egypt

*CORRESPONDENCE

Yinshan Bai
xuefei200403@163.com

SPECIALTY SECTION

This article was submitted to
Veterinary Pharmacology and
Toxicology,
a section of the journal
Frontiers in Veterinary Science

RECEIVED 10 June 2022

ACCEPTED 29 August 2022

PUBLISHED 29 September 2022

CITATION

Zhang N, Zhou M, Yan X, Liu J, Yuan S,
Yang H, Ding H, Zhang D and Bai Y
(2022) Pharmacokinetic and
Pharmacodynamic integration of
tilmicosin against *Mycoplasma
gallisepticum* in the target infection
site in chickens.
Front. Vet. Sci. 9:952599.
doi: 10.3389/fvets.2022.952599

COPYRIGHT

© 2022 Zhang, Zhou, Yan, Liu, Yuan,
Yang, Ding, Zhang and Bai. This is an
open-access article distributed under
the terms of the [Creative Commons
Attribution License \(CC BY\)](https://creativecommons.org/licenses/by/4.0/). The use,
distribution or reproduction in other
forums is permitted, provided the
original author(s) and the copyright
owner(s) are credited and that the
original publication in this journal is
cited, in accordance with accepted
academic practice. No use, distribution
or reproduction is permitted which
does not comply with these terms.

Pharmacokinetic and Pharmacodynamic integration of tilmicosin against *Mycoplasma gallisepticum* in the target infection site in chickens

Nan Zhang¹, Minghu Zhou¹, Xiu Yan¹, Jinxin Liu¹, Sheng Yuan¹,
Hong Yang¹, Huanzhong Ding², Dexian Zhang¹ and
Yinshan Bai^{1*}

¹School of Life Science and Engineering, Foshan University, Foshan, China, ²Guangdong Key
Laboratory for Veterinary Drug Development and Safety Evaluation, South China Agricultural
University, Guangzhou, China

Mycoplasma gallisepticum (*M. gallisepticum*) is a primary respiratory pathogen of poultry and causes significant economic losses to the poultry industry. There were no reported articles concerning the Pharmacokinetics/Pharmacodynamics (PK/PD) interactions of tilmicosin against *M. gallisepticum* *in vivo*. In the current study, we established an *in vivo* *M. gallisepticum* infection model and tilmicosin was administered orally to the *M. gallisepticum*-infected chickens by different dosage regimens. The concentration of tilmicosin in lung tissue was determined by high-pressure liquid chromatography/tandem mass spectrometry (HPLC–MS/MS), besides the counting of the viable colony of *M. gallisepticum* in lung tissue was also monitored dynamically to appraise the PK/PD interactions of tilmicosin against *M. gallisepticum*. We found that anti-mycoplasmal activity was concentration-dependent and mycoplasmacidal activity was observed at tilmicosin dosage >7.5 mg/kg. The PK/PD parameter of AUC/MIC (The area under the concentration–time curve divided by the minimal inhibitory concentration) correlated well with anti-mycoplasmal efficacy ($R^2 = 0.92$). The ratios of AUC/MIC for 1 log₁₀ and 3 log₁₀ colony-forming units [CFU]/lung reductions were 300.02 and 6,950.15 h, respectively. These findings indicated that tilmicosin may be therapeutically effective in chickens to treat *M. gallisepticum* lung infections if administered at a dose of 9.12 mg/kg.

KEYWORDS

Pharmacokinetic, Pharmacodynamic, tilmicosin, *Mycoplasma gallisepticum*, the target infection site

Introduction

Mycoplasma gallisepticum (*M. gallisepticum*) is the primary causative agent of chronic respiratory disease in chickens and sinusitis in turkeys. The primary symptoms of these infections are air sacculitis, nasal discharge, and keratoconjunctivitis; and *M. gallisepticum* can be transmitted horizontally as well as vertically through eggs (1).

Embryo mortality, weight loss, and lowered egg production are adverse consequences of these infections in chickens and places an economic burden on these farms (2). Pleuromutilins, tetracyclines, quinolones, and macrolides are the current modalities used for infection control on poultry farms for *M. gallisepticum* infections (3, 4). The Pharmacokinetics (PK) of macrolides are distinctive due to their large distribution volume and persistence and retention in the lung, and are the preferred treatment for bacterial respiratory diseases of livestock (5). However, macrolide resistance in *M. gallisepticum* has appeared and a more reasonable dosing schedule should be established using PK/Pharmacodynamics (PD) modeling to ensure proper treatments are established (6, 7).

Tilmicosin is a semi-synthetic 16-membered lactone macrolide with robust antimicrobial activity *in vitro* against Gram-positive and Gram-negative bacteria, as well as *Mycoplasma* spp. (8). It is approved to treat respiratory disease in cattle and sheep caused by *Mannheimia haemolytica*, in swine caused by *Actinobacillus pleuropneumoniae* and *Pasteurella multocida* and in chickens and swine caused by *M. gallisepticum* and *Mycoplasma hyopneumoniae* (9). Tilmicosin is also widely used to treat the respiratory disease caused by *M. gallisepticum* due to its accumulation in lung and high levels are retained in lung tissue. This is a desirable effect since *M. gallisepticum* is a facultative intracellular pathogen and lung tissue levels should be used when developing treatment protocols for poultry (10, 11). In addition, PK/PD integration models of tilmicosin against *M. gallisepticum* and *M. hyopneumoniae* have only been performed using *in vitro* models and studies using mycoplasma-infected chickens are lacking (12, 13).

The purpose of the current study was to establish an *in vivo* PK/PD model based on different dosing regimens for tilmicosin in chicken lung tissues and evaluate its antibacterial activity against *M. gallisepticum*. This study provides a baseline reference for optimizing tilmicosin treatments for mycoplasma infections in chickens.

Materials and methods

Organisms and chemicals

Mycoplasma gallisepticum strain S6 was obtained from the Chinese Veterinary Microorganism Culture Collection Center (Beijing, China). Culture media consisted of *M. gallisepticum* artificial medium base (Qingdao Hope Biological Technology) containing nicotinamide adenine dinucleotide and cysteine and swine serum (Guangzhou Ruite Biological) as previously described (3). Tilmicosin phosphate was a kind gift of Eastern Along Pharmaceuticals (Guangdong, China). Acetonitrile, formic acid, methanol (high-performance liquid chromatography grade), and remaining analytical grade reagents were purchased from Guangzhou Chemical Reagent.

Animals and inoculations

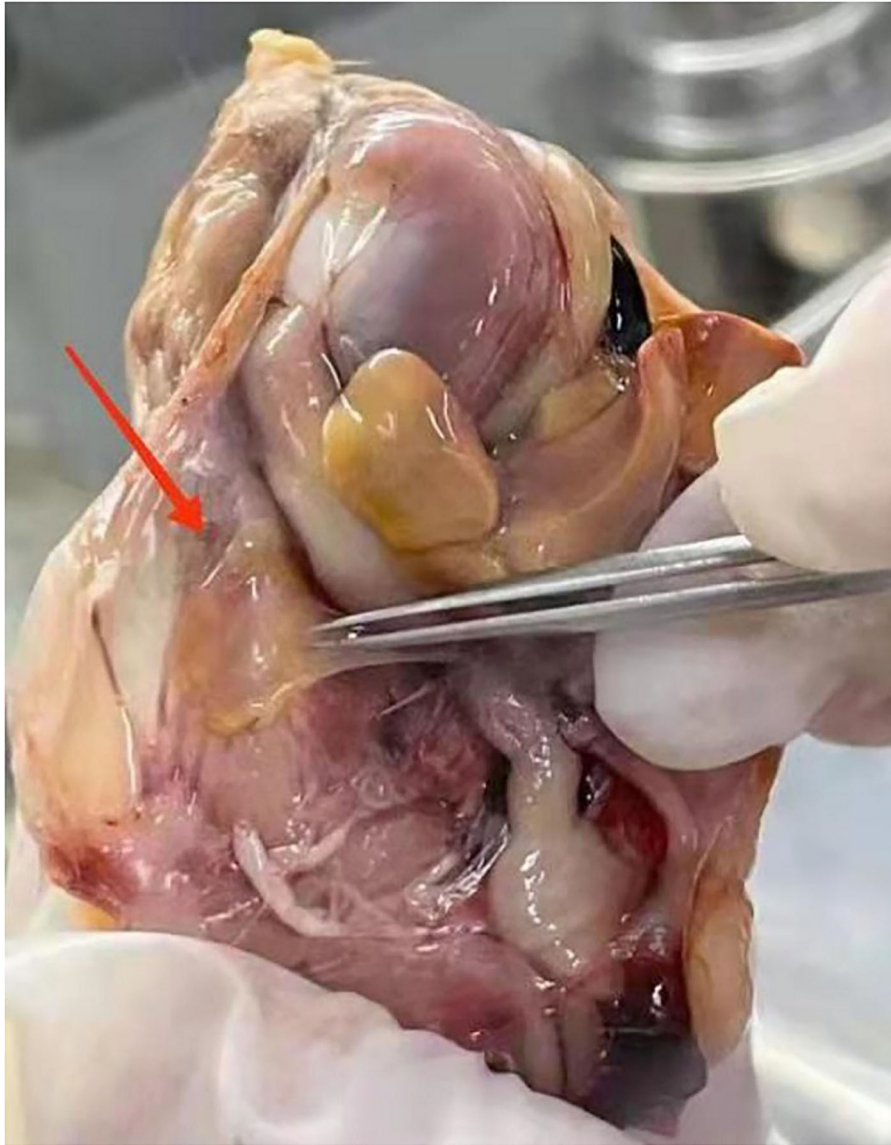
Specific pathogen-free (SPF) 3-day-old White Leghorn chickens were purchased from Guangdong Da Hua Nong Animal Health (Guangdong, China). All *in vivo* experiments were approved by the animal research committees of Foshan University Animal Ethics Committee (Approval number: 2019044). The chickens were given antimicrobial-free feed and water *ad libitum*. Chickens were infected with *M. gallisepticum* as previously described (14). The 50 ml logarithmic growth phase of *M. gallisepticum* culture was centrifuged 20 min at 8,000r, then the supernatant was discarded and the residue was dissolved in 2 ml of *M. gallisepticum* culture. 0.2 ml aliquots of 10^9 colony-forming units [CFU]/ml were administered twice a day *via* intratracheal injection for three consecutive days. The animals were continually monitored for clinical signs of respiratory infection, such as nasal discharge, sneezing, coughing, and rales. The successful infection model was confirmed by the clinical signs as well as re-isolation and identification of the pathogen and the presence of anti-*M. gallisepticum* antibodies using a commercial ELISA kit (Shenzhen Lvshiyuan Biotechnology Co., Ltd).

Determination of the minimal inhibitory concentration

The minimal inhibitory concentration (MIC) of tilmicosin against strain S6 was determined using a modified MIC assay method (15). Briefly, log phase cultures were diluted with medium to 10^5 CFU/ml and added to a 96-well plate that contained two-fold serial dilutions of tilmicosin from a 0.25 µg/ml stock. Control wells included a growth control (lacking tilmicosin), an end-point control (blank medium at pH 6.8), and a sterility control (sterile medium at pH 7.8). The plates were incubated at 37°C in a 5% CO₂ humidified atmosphere until the growth and end-point controls were of the same color. The minimal drug concentration that caused no color change was defined as the MIC.

PK of tilmicosin in *M. gallisepticum*-infected chickens

We infected 240 chickens and tilmicosin was orally administered at 1 and 30 mg/kg (equal numbers) and 8 chickens per group were euthanized at 0.083, 0.25, 0.5, 1, 2, 4, 6, 8, 12, 24, 48, 72, 96, 120, and 144 h following drug administration and lung tissues were collected. A control group of eight infected but untreated chickens were euthanized at the start of the experiments. Lung tissues were stored at -20°C and analyzed within 2 weeks.

**FIGURE 1**

The symptoms of air sac in *Mycoplasma gallisepticum* (*M. gallisepticum*)-infected chickens.

Tilmicosin concentrations in lung tissues were determined by high-pressure liquid chromatography/tandem mass spectrometry (HPLC–MS/MS) using a Shimadzu LCMS-8045 triple quadrupole mass spectrometer. Chromatographic separations were performed using a Shim-pack GIST-HP C18 (50 mm × 21 mm; 3 μm) column using a mobile phase of solution A (0.1% formic acid in water) and solution B (acetonitrile) at a flow rate of 0.3 ml/min. The gradient elution was 0–1.5 min, 15% B; 1.5–4 min, 65% B; 4–4.5 min, 95% B; 4.5–5.5 min, 95% B; and 5.5–10 min, 15% B. The injection volume was 5 μl. Lung tissues were treated

as previously described with modifications (16). In brief, lung tissue samples were homogenized and acetonitrile was added to extract tilmicosin. The mixture was vortexed and centrifuged, then 9 ml of water was added into the supernatants and purified using an SPE C18 cartridge and tilmicosin was eluted using 3 ml acetonitrile. The eluate was evaporated to dryness under a gentle stream of nitrogen at 45°C and the residue was dissolved in 1 ml of mobile phase solvent and filtered through a 0.22 mm syringe filter prior to HPLC–MS/MS analysis.

The PK profiles of tilmicosin in lung tissues were analyzed using a noncompartmental model provided in

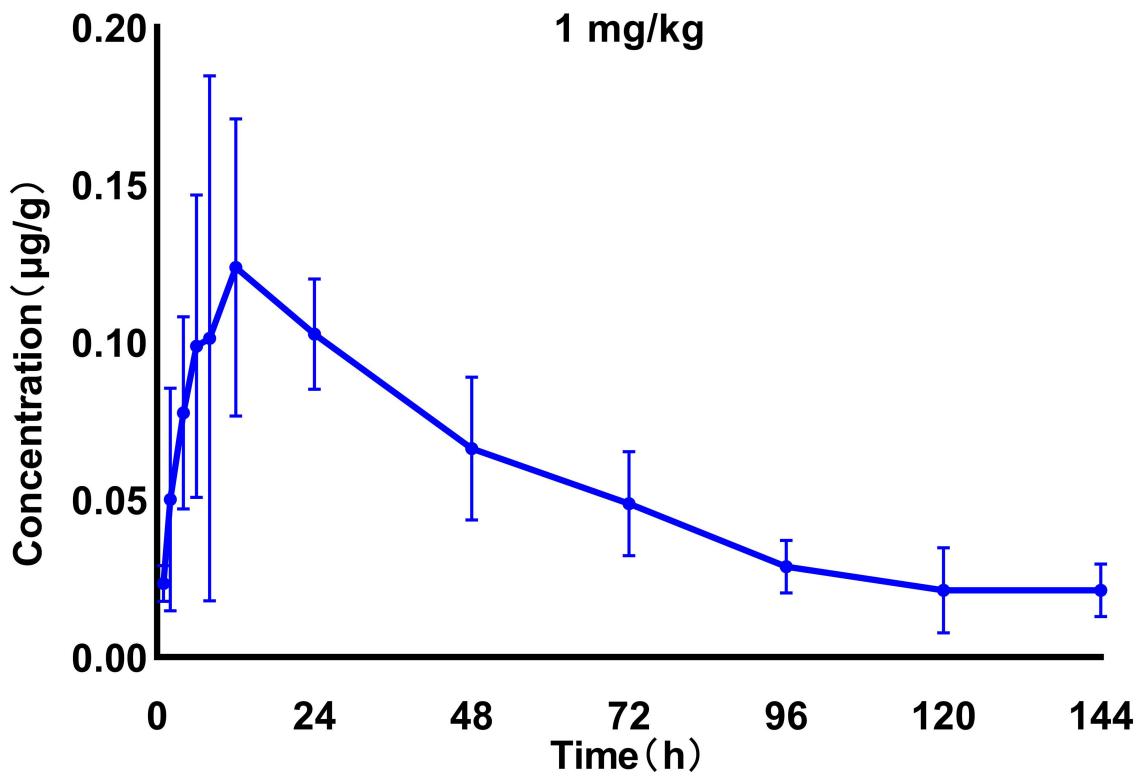


FIGURE 2
Time-concentration curves of tilmicosin in lung tissues after oral administration of 1 mg/kg in infected *M. gallisepticum* chickens ($n = 8$ /time point).

WinNonlin software, Version 6.1 (Pharsight, Mountain View, CA, USA). PK parameters include elimination half-life ($t_{1/2}$), the area under the concentration-time curve (AUC), and maximum concentration of drug in samples (C_{max}), the time of peak concentration (t_{max}), and mean residence time (MRT).

Pharmacodynamics of tilmicosin in *M. gallisepticum*-infected chickens

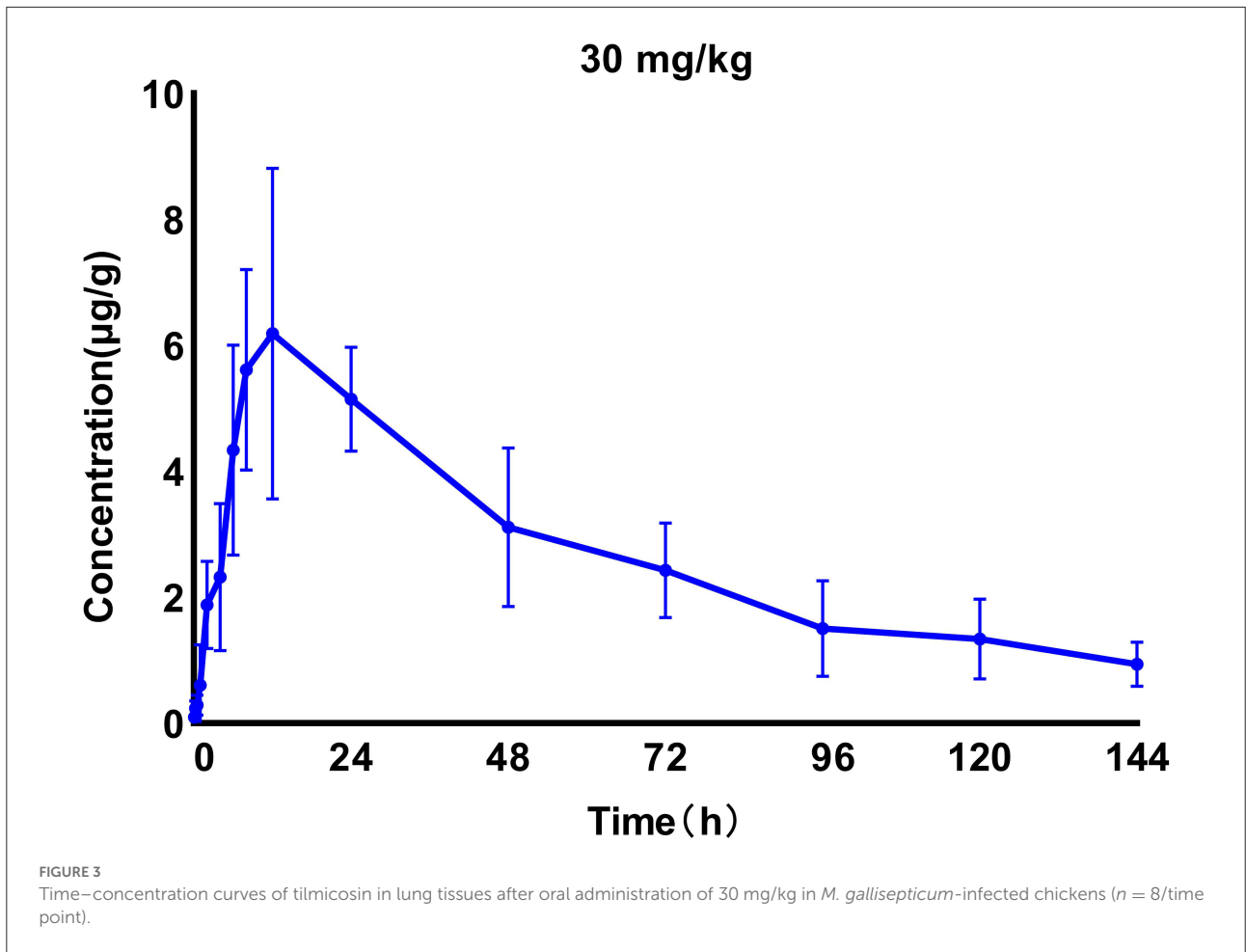
A group of 168 *M. gallisepticum*-infected chickens (see above) were administered tilmicosin by oral gavage at 1, 2, 4, 7.5, 10, 15, and 30 mg/kg. A control group of 24 infected chickens was administered the same volume of normal saline. Six chickens at each sampling time point per group were euthanized at 0, 24, 48, and 72 h and the lung tissues were aseptically collected and homogenized in 1 ml of culture medium and spread-plated onto agar plates containing culture medium. A reduction in CFU $< 3 \log_{10}$ was denoted a bacteriostatic and $\geq 3 \log_{10}$ CFU indicated a bactericidal effect.

Pharmacokinetics/Pharmacodynamics analysis

The PK/PD index of AUC/MIC (The area under the concentration-time curve divided by the MIC) was calculated using MIC value and PK parameter derived from tilmicosin levels in lung tissue samples. The PK of tilmicosin in *M. gallisepticum*-infected chickens at the dose of 4, 7.5, and 10 mg/kg was established using our preliminary results (16). Drug effectiveness was reflected as a reduction in viable counts from lung tissues after each treatment compared to the control group. The PK/PD was fitted by linear model, E_{max} model, and Sigmoid E_{max} model, respectively. The following equation was exhibited as the linear model:

$$Y = AX + B \quad (1)$$

Where Y is the antibacterial effect that was assessed as the reduction in \log_{10} CFU/lung after each administration of tilmicosin, compared to the \log_{10} CFU/lung in the untreated control group (absence of tilmicosin); X is the AUC/MIC after the different administrations. A is the slope and B is the intercept.



The following equation was response for the E_{max} model:

$$E = E_0 + \frac{(E_{max} - E_0) \times C}{EC_{50} + C} \quad (2)$$

Where E is the antibacterial effect that was assessed as the reduction in \log_{10} CFU/lung after each administration of tilmicosin, compared to the \log_{10} CFU/lung in the untreated control group (absence of tilmicosin); E_{max} is the difference in effect between the greatest amount of growth (as seen for the growth control, E_0) and the greatest amount of kill; C is the AUC/MIC after the different administrations; EC_{50} is the PK/PD parameter producing a 50% reduction in *M. gallisepticum* counts.

The following equation was response for the sigmoid E_{max} model:

$$E = E_0 + \frac{E_{max} \times C_e^N}{EC_{50}^N + C_e^N} \quad (3)$$

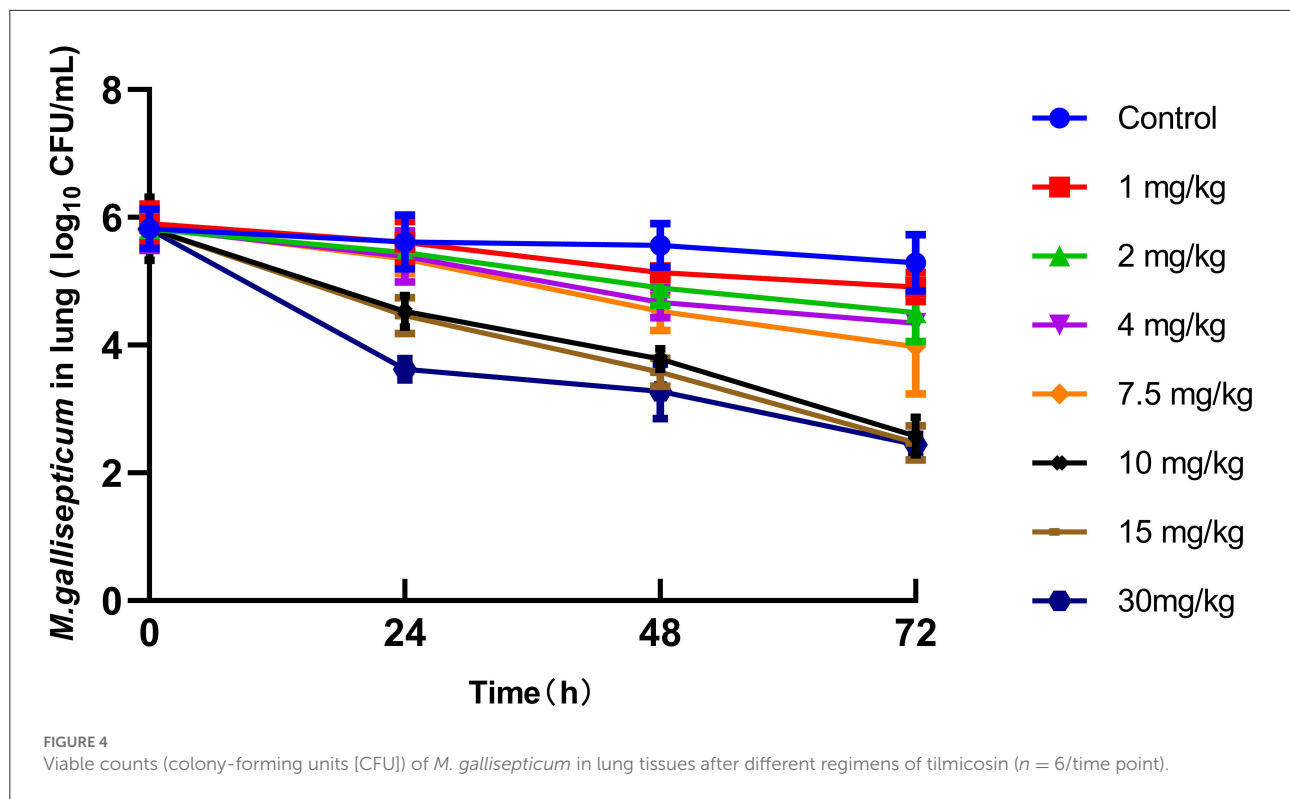
Where E is the antibacterial effect that was assessed as the reduction in \log_{10} CFU/lung after each administration of tilmicosin, compared to the \log_{10} CFU/lung in the untreated

TABLE 1 The main PK parameters of tilmicosin in lung tissues of the *M. gallisepticum* infected chickens.

| Parameter | Units | 1 mg/kg | 30 mg/kg |
|--------------|--------|---------|----------|
| $t_{1/2kel}$ | h | 48.46 | 50.60 |
| T_{max} | h | 12.00 | 12.00 |
| C_{max} | µg/g | 0.12 | 6.19 |
| AUC | µg·h/g | 13.62 | 464.23 |
| MRT | h | 53.60 | 50.88 |
| CL/F | l/h/kg | 0.09 | 0.06 |

$t_{1/2kel}$, elimination half-life; t_{max} , the time of peak concentration; C_{max} , the maximum concentration of drug in samples; AUC, the area under the concentration-time curve; MRT, mean residence time; CL/F, clearance divided by bioavailability.

control group (absence of tilmicosin); E_{max} is the difference in effect between the greatest amount of growth (as seen for the growth control, E_0) and the greatest amount of kill; C_e is the PK/PD parameter in the effect compartment; EC_{50} is the PK/PD parameter producing a 50% reduction in *M. gallisepticum*



counts, and N is the Hill coefficient that describes the steepness of the effect curve of AUC/MIC .

Dosage calculation

An optimal regimen was established using the dose required for different magnitudes of efficiency provided by the following equation as previously described (17).

$$\text{Dose (per day)} = \frac{(AUC/MIC)_{\text{breakpoint}} \times MIC \times CL}{F} \quad (4)$$

Where dose (per day) is the optimal dose (mg/kg,bw); AUC/MIC is the targeted endpoint for the desired effect (Lh/kg); MIC_{90} is the 90% of the MIC distribution (mg/L); and clearance is the lung clearance expressed as kg/kg/h (CL per h was 0.373 kg/kg/h). F is the bioavailability.

Results

Mycoplasma gallisepticum infection model

Mycoplasma gallisepticum-infected chickens in our experiments were identified based on observable clinical signs, such as coughs, sneezing, ocular, and nasal discharge,

breathing difficulty, and moist rales. Air sacs were thickened and contained opaque and caseous deposits (Figure 1). These infections were confirmed in subsequent ELISA tests that were positive for *M. gallisepticum* antibody and the CFU of *M. gallisepticum* that produced characteristic nipple-shaped or fried egg colony shapes on solid media.

PK analysis

A tilmicosin calibration curve was used to quantify drug levels in lung tissue and was linear from 0.002 to 0.5 $\mu\text{g/ml}$. The limits of detection (LOD) and quantification (LOQ) were 0.004 and 0.008 $\mu\text{g/g}$, respectively, and recoveries from lung tissue spiked samples ranged from 80.53 to 86.53% in lung tissue homogenates. The within-run and between-run relative standard deviations were 3.64 and 8.92%, respectively.

We generated time-concentration curves of tilmicosin in lung tissues after oral administration of 1 and 30 mg/kg in our infected animals. There were no differences in $t_{1/2}$, t_{max} MRT, and CL between the two doses ($p > 0.5$). 0.1, 4, 7.5, 10, and 30 mg/kg doses generated a significant correlation ($R^2 > 0.97$) between dose and AUC (Figures 2, 3; Table 1).

TABLE 2 The Pharmacokinetics/Pharmacodynamics (PK/PD) parameter of AUC/MIC (the area under the concentration–time curve divided by the minimal inhibitory concentration) and the corresponding antimycoplasmal effect in various administration regimens of tilmicosin.

| Dose (mg/kg) | Time (h) | E ($\Delta\text{Log}_{10}\text{CFU/g}$) | AUC/MIC (h) |
|--------------|----------|---|-------------|
| 1 | 0–24 | 0.74 | 150.81 |
| | 0–48 | 1.21 | 279.78 |
| | 0–72 | 1.44 | 367.62 |
| 2 | 0–24 | 0.90 | 476.49 |
| | 0–48 | 1.47 | 893.51 |
| | 0–72 | 1.84 | 1,173.78 |
| 4 | 0–24 | 0.97 | 603.54 |
| | 0–48 | 1.69 | 1,121.12 |
| | 0–72 | 2.02 | 1,472.38 |
| 7 | 0–24 | 1.01 | 1,298.28 |
| | 0–48 | 1.83 | 2,544.98 |
| | 0–72 | 2.38 | 3,410.21 |
| 10 | 0–24 | 1.32 | 2,418.24 |
| | 0–48 | 2.33 | 4,581.45 |
| | 0–72 | 3.19 | 6,033.34 |
| 15 | 0–24 h | 1.87 | 3,573.65 |
| | 0–48 | 2.47 | 6,701.35 |
| | 0–72 | 3.68 | 8,803.37 |
| 30 | 0–24 | 2.06 | 7,307.02 |
| | 0–48 | 3.10 | 13,660.61 |
| | 0–72 h | 3.94 | 17,923.84 |

E is the antibacterial effect that was assessed as the reduction in \log_{10} CFU/lung after each administration of tilmicosin, compared to the \log_{10} CFU/lung in untreated control group (absence of tilmicosin).

Pharmacodynamics of tilmicosin against *M. gallisepticum* in infected chickens

The PD parameters using different regimens indicated that the tilmicosin concentration was directly proportional to antimycoplasmal activity at doses >7.5 mg/kg. However, there were no differences in the reduction of the CFU of *M. gallisepticum* between 10, 15, and 30 mg/kg at 72 h post-administration (Figure 4).

PK/PD analysis

The MIC of tilmicosin against *M. gallisepticum* was $0.0156 \mu\text{g/ml}$. The AUC/MIC and the reduction in viable counts in different administration regimens are displayed in Table 2. The fitness of the PK/PD employed by the linear model, E_{max} model, and Sigmoid E_{max} model were 0.75, 0.90, and 0.92, respectively. Therefore, the Sigmoid E_{max} model was selected

TABLE 3 The PK/PD parameters of tilmicosin against *M. gallisepticum* in vivo using the E_{max} model employed by WinNonlin software.

| Parameter | Value |
|------------------|----------|
| E_{max} | 4.78 |
| EC_{50} | 7,174.57 |
| E_0 | 0.64 |
| N | 0.79 |
| R^2 | 0.92 |

E_{max} , the reduction in log CFU/lung for the untreated control chicken. E_0 , the maximum reduction after administration that represents the maximum antibacterial effect. EC_{50} , the AUC/MIC value required to achieve 50% of the maximal antibacterial effect. N, the Hill coefficient which describes the steepness of the AUC/MIC and effect curve.

to calculate the PK/PD parameters, which were shown in Table 3. The PK/PD parameter vs. antimycoplasmal effect curve was displayed in Figure 5. The dose–response relationships analyzed using the Sigmoid E_{max} model indicated AUC/MIC for 1 \log_{10} and 3 \log_{10} CFU/lung reductions were 300.02 and 6,950.15 h, respectively.

Dosage calculation

Since there was not enough tilmicosin MIC data available to provide an estimate of the MIC_{90} , the MIC of tilmicosin against strain S6 was substituted as a projected MIC_{90} . We accounted for bioavailability due to the extravascular administration route. A dosage of 9.12 mg/kg was calculated to be capable of a reduction of 3 \log_{10} CFU/lung.

Discussion

Tilmicosin has good tissue penetration and is used for the treatment of respiratory disease caused by *M. gallisepticum*. Previous reports had indicated that higher concentrations of the drug were present in lung tissues relative to plasma. For example, the PK of tilmicosin in calves revealed through bronchial swabs and bronchoalveolar lavage samples exceeded plasma levels by 5.67 and 7.76 folds, respectively (18). The PKs and tissue levels of tilmicosin in chickens demonstrate that the concentration in the lungs was greater than that of plasma (19). In our earlier study, we found that the C_{max} of tilmicosin in lung tissues was 12.8 and 14.28 times higher than for plasma between *M. gallisepticum*-infected chickens and their healthy counterparts (16). Moreover, tilmicosin has been widely used in the treatment of CRD caused by *M. gallisepticum* which mainly colonized in lung tissue. Consequently, the concentration of tilmicosin in lung tissue was more suitable for the PK/PD relationship of tilmicosin against *M. gallisepticum* in the in vivo infection model.

In vitro, ex-vivo, and in vivo models have been utilized for PK/PD modeling and each has advantages and disadvantages.

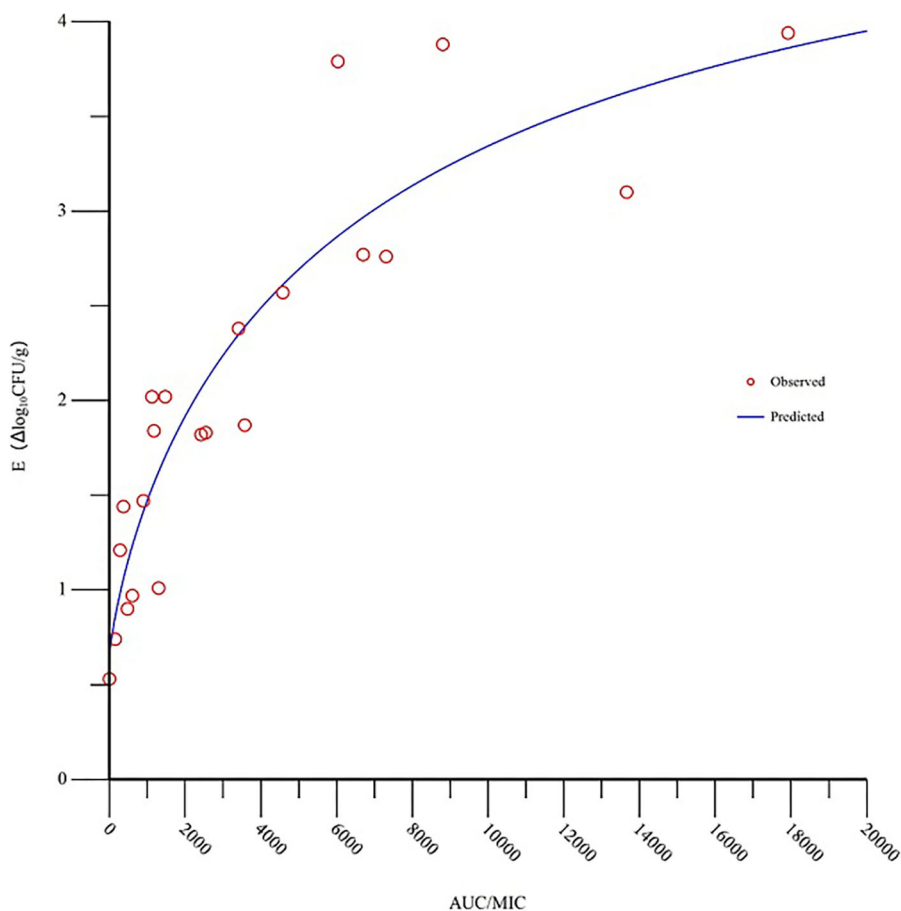


FIGURE 5

Sigmoid E_{max} relationships for the anti-mycoplasmal effect (E , \log_{10} CFU/lung) and the *in vivo* AUC/MIC (the area under the concentration-time curve divided by the minimal inhibitory concentration) ratio against *M. gallisepticum* in the lung tissues of chickens.

Huang has established an *in vitro* dynamic model and studied the PK/PD relationship of tilmicosin against *M. gallisepticum*. The PK was simulated by the peristaltic pump and the PD was recorded by the change of *M. gallisepticum* number in the central compartment (12). The *in vitro* model was convenient to operate and to be cost-effective. It can be used to study the development of resistance between drug and bacterial interactions. However, it doesn't reflect the real situation, for the reason that the PK was simulated by the peristaltic pump and the immune defense of animals was ignored. In the current study, an *in vivo* *M. gallisepticum* infection model was established to evaluate the PK and PD of tilmicosin against *M. gallisepticum*-infected chickens. Although the *in vivo* model was time-consuming and expensive, the results were provided actually as close as possible.

The PK–PD integration parameters are essential for the formulation of optimal dosage regimens. Previous studies have indicated that the most suitable PK/PD parameter for macrolides with a long elimination half-life was related to

AUC/MIC. For example, the PK/PD relationship of tildipirosin against *P. multocida* in a murine lung infection model indicated that AUC/MIC was the most appropriate PK/PD index (20). Gamithromycin possesses a rapid and concentration-dependent killing against *Haemophilus parasuis* and the AUC/MIC ratio correlated well in an *ex vivo* model ($R^2 = 0.97$) (21). In the previous reports, Huang studied the PK/PD integration of tilmicosin against *M. gallisepticum* and *Mycoplasma hyopneumoniae* in the *in vitro* dynamic model. These studies also demonstrated that AUC/MIC was the best PK/PD parameter (R^2 was 0.87 and 0.99, respectively) to predict the antimicrobial activity of tilmicosin against *M. gallisepticum* and *M. hyopneumoniae* (12, 13). Consequently, AUC/MIC was the preferable PK/PD index to investigate the PK/PD relationship of tilmicosin against *M. gallisepticum* *in vivo*.

Antibacterial resistance in *M. gallisepticum* has been increasing and is primarily the result of irrational antibiotic use and abuse (22, 23). To solve these types of problems, Zhao

and Drlica proposed the “mutant selection window” (MSW) hypothesis that a drug concentration zone exists in which resistant mutants are selectively amplified and this generates reduced drug susceptibility (24). The MSW hypothesis has been verified *in vitro* and *in vivo* (25–27). The MSW of tilmicosin for *M. gallisepticum* strain S6 was determined *in vitro* and the MIC₉₉ and MPC were determined to be 0.027 and 0.15 µg/ml, which corresponding to the lower and upper boundary of the MSW. The PK of tilmicosin in *M. gallisepticum*-infected chickens revealed that lung tilmicosin levels 24 h were partly within the MSW following oral single doses of 1, 2, 4, and 7.5 mg/kg and resistant mutant strains could possibly exist. These findings suggested that tilmicosin may be therapeutically effective to treat *M. gallisepticum* infection and restrict the acquisition of resistance in chickens if administered at a dosage >7.5 mg/kg after a single oral dose.

An additional study using *M. gallisepticum* infection of broiler chickens treated with tilmicosin at 10 and 20 mg/kg in the drinking water for five successive days found that respiratory tract lesions with 20 mg/kg treatment were significantly fewer than at 10 mg/kg (28). Consequently, a dosing scheme of 20 mg/kg of tilmicosin for five successive days was a logical conclusion for the dosing strategy to treat clinical outbreaks of *M. gallisepticum* in broilers. Our results indicated that 9.12 mg/kg tilmicosin after an oral single dose was sufficient for *M. gallisepticum* infection treatment. The different intracorporal processes of tilmicosin in chicken result from the different dosing regimens, such as the route, dose, and interval of the administration. These data provide a reliable basis for designing a rational treatment regimen for *M. gallisepticum* infections and the actual effect should be verified in clinical practice.

Conclusion

The *in vivo* *M. gallisepticum* infection model was established and tilmicosin and the CFU of *M. gallisepticum* in the lungs were taken as endpoints to evaluate PK/PD interactions. The PK/PD parameter of AUC/MIC correlated well with anti-mycoplasmal efficacy ($R^2 = 0.92$). The ratios of AUC/MIC for 1 log₁₀ and 3 log₁₀ CFU/lung reductions were 300.02 and 6,950.15 h, respectively. These results indicated that tilmicosin at a dose of 9.12 mg/kg would be therapeutically effective to treat *M. gallisepticum* infections in chickens.

Data availability statement

The original contributions presented in the study are included in the article/Supplementary material, further inquiries can be directed to the corresponding author/s.

Ethics statement

The animal experiments were approved by the Animal Research Committees of Foshan University Animal Ethics Committee (Approval number: 2019044).

Author contributions

Methodology, software, validation, formal analysis, data curation, writing original draft preparation, writing review and editing, visualization, project administration, and funding acquisition: NZ. Investigation and resources: NZ, JL, XY, MZ, SY, HY, HD, and DZ. Supervision: YB. All authors contributed to the article and approved the submitted version.

Funding

This study was supported financially by the Guangdong Basic and Applied Basic Research Foundation (No. 2020A1515010664) and the Guangdong Province University Technology Service Special Project for Rural Revitalization Key Fields (No. 2017KQNCX212).

Conflict of interest

The authors declare that the research was conducted in the absence of any commercial or financial relationships that could be construed as a potential conflict of interest.

Publisher's note

All claims expressed in this article are solely those of the authors and do not necessarily represent those of their affiliated organizations, or those of the publisher, the editors and the reviewers. Any product that may be evaluated in this article, or claim that may be made by its manufacturer, is not guaranteed or endorsed by the publisher.

Supplementary material

The Supplementary Material for this article can be found online at: <https://www.frontiersin.org/articles/10.3389/fvets.2022.952599/full#supplementary-material>

References

- Levisohn S, Kleven SH. Avian mycoplasmosis (*Mycoplasma gallisepticum*). *Rev Sci Tech.* (2000) 19:425–42. doi: 10.20506/rst.19.2.1232
- Kleven S. Summary of discussions of avian mycoplasma team international research program on comparative mycoplasma. *Avian Pathol.* (1989) 10:16–20. doi: 10.1080/03079459008418732
- Zhang N, Gu X, Ye X, Wu X, Zhang B, Zhang L, et al. The PK/PD interactions of doxycycline against *Mycoplasma gallisepticum*. *Front Microbiol.* (2016) 7: 653. doi: 10.3389/fmicb.2016.00653
- Zhang N, Ye X, Wu Y, Huang Z, Gu X, Cai Q, et al. Determination of the mutant selection window and evaluation of the killing of *Mycoplasma gallisepticum* by danofloxacin, doxycycline, tilimicosin, tylvalosin and valnemulin. *PLoS ONE.* (2017) 12:e0169134. doi: 10.1371/journal.pone.0169134
- Yang Y, Yuan L, Li J, Muhammad I, Cheng P, Xiao T, et al. Preparation and evaluation of tilimicosin microspheres and lung-targeting studies in rabbits. *Vet J.* (2019) 246:27–34. doi: 10.1016/j.tvjl.2019.01.007
- Gerchman I, Levisohn S, Mikula I, Manso-Silvan L, Lysnyansky I. Characterization of *in vivo*-acquired resistance to macrolides of *Mycoplasma gallisepticum* strains isolated from poultry. *Vet Res.* (2011) 42:1–9. doi: 10.1186/1297-9716-42-90
- Ammar AM, Abd El-Aziz NK, Gharib AA, Ahmed HK, Lameay AE. Mutations of domain V in 23S ribosomal RNA of macrolide-resistant *Mycoplasma gallisepticum* isolates in Egypt. *J Infect Dev Ctries.* (2016) 10:807–13. doi: 10.3855/jidc.7850
- Xiong J, Zhu Q, Zhao Y, Yang S, Cao J, Qiu YJ, et al. Tilimicosin enteric granules and pre-mix to pigs: antimicrobial susceptibility testing and comparative pharmacokinetics. *J Vet Pharmacol Ther.* (2019) 42:336–45. doi: 10.1111/jvp.12753
- Womble A, Giguere S, Murthy YV, Cox C, Obare E. Pulmonary disposition of tilimicosin in foals and *in vitro* activity against *Rhodococcus equi* and other common equine bacterial pathogens. *J Vet Pharmacol Ther.* (2006) 29:561–8. doi: 10.1111/j.1365-2885.2006.00804.x
- Zeng Z, Feng QJSAS. Pharmacokinetic and Pharmacodynamic studies of enrofloxacin in pigs experimentally infected with *Escherichia coli*. *Sci Agric Sin.* (1997) 30:10–5.
- Huang XH, Chen ZL, Zhang ST. Influence of experimentally *Pasteurella multocida* infection on the pharmacokinetics of marbofloxacin in broiler chickens. *Acta Vet Hung.* (2003) 34:98–102. Available online at: http://en.cnki.com.cn/Article_en/CJFDTOTAL-XMSY200301020.htm
- Huang Z, Wu Y, Zhou Z, Xia X, Gu X, Cai Q, et al. Pharmacokinetic and pharmacodynamic integration and resistance analysis of tilimicosin against *Mycoplasma gallisepticum* in an *in vitro* dynamic model. *Front Pharmacol.* (2019) 10:670. doi: 10.3389/fphar.2019.00670
- Huang Z, Hu Z, Zheng H, Xia X, Gu X, Shen X, et al. The PK/PD integration and resistance of tilimicosin against mycoplasma hyopneumoniae. *Pathogens.* (2020) 9:487. doi: 10.3390/pathogens9060487
- Zhang N, Wu Y, Huang Z, Yao L, Zhang L, Cai Q, et al. The PK–PD relationship and resistance development of danofloxacin against *Mycoplasma gallisepticum* in an *in vivo* infection model. *Front Microbiol.* (2017) 8:926. doi: 10.3389/fmicb.2017.00926
- Hannan PC. Guidelines and recommendations for antimicrobial minimum inhibitory concentration (MIC) testing against veterinary mycoplasma species. *Vet Res.* (2000) 31:373–95. doi: 10.1051/vetres:2000100
- Zhang N, Liu Z, Wei Y, Zhang C, Mao C, Cai Q, et al. Comparison of the pharmacokinetics of tilimicosin in plasma and lung tissue in healthy chickens and chickens experimentally infected with *Mycoplasma gallisepticum*. *J Vet Pharmacol Ther.* (2020) 43:347–54. doi: 10.1111/jvp.12847
- Toutain PL, Bousquet-Melou A, Martinez M. AUC/MIC: a PK/PD index for antibiotics with a time dimension or simply a dimensionless scoring factor? *J Antimicrob Chemother.* (2007) 60:1185–88. doi: 10.1093/jac/dkm360
- Foster DM, Sylvester HJ, Papich MG. Comparison of direct sampling and bronchoalveolar lavage for determining active drug concentrations in the pulmonary epithelial lining fluid of calves injected with enrofloxacin or tilimicosin. *J Vet Pharmacol Ther.* (2017) 40:e45–53. doi: 10.1111/jvp.12412
- Abdelhakim Elkomy A, Eltanany N, Aboubakr M, Roushdy Mohamed Z, Elbadawy MJBVMJ. Pharmacokinetics and tissue residues of tilimicosin in normal and experimentally *Mycoplasma gallisepticum*-infected broiler chickens. *Benha Med J.* (2018) 34:188–205. doi: 10.21608/bvmj.2018.44745
- Zeng D, Sun M, Lin Z, Li M, Gehring R, Zeng ZJF, et al. Pharmacokinetics and pharmacodynamics of tilidipirosin against *Pasteurella multocida* in a murine lung infection model. *Front Microbiol.* (2018) 9:1038. doi: 10.3389/fmicb.2018.01038
- Zhou YF, Bu MX, Liu P, Sun J, Liu YH, Liao XP. Epidemiological and PK/PD cutoff values determination and PK/PD-based dose assessment of gamithromycin against *Haemophilus parvus* in piglets. *BMC Vet Res.* (2020) 16:1–12. doi: 10.1186/s12917-020-02300-y
- Emam M, Hashem YM, El-Hariri M, El-Jakee JJVW. Detection and antibiotic resistance of *Mycoplasma gallisepticum* and *Mycoplasma synoviae* among chicken flocks in Egypt. *Vet World.* (2020) 13:1410. doi: 10.14202/vetworld.2020.1410-1416
- Taiyari H, Faiz NM, Abu J, Zakaria Z. Antimicrobial minimum inhibitory concentration of *Mycoplasma gallisepticum*: a systematic review. *J Appl Poult Res.* (2021) 30:100160. doi: 10.1016/j.japr.2021.100160
- Zhao X, Drlica KJCID. Restricting the selection of antibiotic-resistant mutants: a general strategy derived from fluoroquinolone studies. *Clin Infect Dis.* (2001) 33(Suppl 3):S147–56. doi: 10.1086/321841
- Firsov AA, Alieva KN, Strukova EN, Golikova MV, Portnoy YA, Dovzhenko SA, et al. Testing the mutant selection window hypothesis with *Staphylococcus aureus* exposed to linezolid in an *in vitro* dynamic model. *J Antimicrob Chemother.* (2017) 72:3100–7. doi: 10.1093/jac/dkx249
- Zhang N, Wu Y, Huang Z, Zhang C, Zhang L, Cai Q, et al. Relationship between danofloxacin PK/PD parameters and emergence and mechanism of resistance of *Mycoplasma gallisepticum* in *in vitro* model. *PLoS ONE.* (2018) 13:e0202070. doi: 10.1371/journal.pone.0202070
- Zhang Y, Zhang R, Sy SK Li Z, Zhu S, Zhou M, et al. Florfenicol/chlortetracycline effect on *Pharmacodynamic indices* for mutant selection of *Riemerella anatipestifer* in ducks. *Microb Drug Resist.* (2022) 28:832–40. doi: 10.1089/mdr.2022.0008
- Garmyn A, Vereecken M, De Gussem K, Depondt W, Haesebrouck F, Martel A. Efficacy of tylosin and tilimicosin against experimental *Mycoplasma gallisepticum* infection in chickens. *Avian Dis.* (2019) 63:359–65. doi: 10.1637/11991-110818-Reg.1