



The Impact of Acute Loud Noise on the Behavior of Laboratory Birds

Tayanne L. Corbani¹, Jessica E. Martin^{2*} and Susan D. Healy³

¹ The Royal (Dick) School of Veterinary Studies, The College of Medicine and Veterinary Medicine, The University of Edinburgh, Edinburgh, United Kingdom, ² The Royal (Dick) School of Veterinary Studies and The Roslin Institute, The College of Medicine and Veterinary Medicine, The University of Edinburgh, Edinburgh, United Kingdom, ³ School of Biology, Harold Mitchell Building, University of St. Andrews, St. Andrews, United Kingdom

Husbandry procedures and facility settings, such as low-frequency fire alarms, can produce noises in a laboratory environment that cause stress to animals used in research. However, most of the data demonstrating harmful effects that have, consequently, led to adaptations to management, have largely come from laboratory rodents with little known of the impacts on avian behavior and physiology. Here we examined whether exposure to a routine laboratory noise, a low-frequency fire alarm test, induced behavioral changes in laboratory zebra finches (*Taeniopygia guttata*). Twenty-four breeding pairs of zebra finches were randomly selected and exposed to the low-frequency fire alarm (sounding for 10–20 s) or no noise (control) on separate test days. All birds were filmed before and after the alarm sounded and on a control day (without the alarm). The zebra finches decreased their general activity and increased stationary and social behaviors after exposure to the alarm. Brief exposure to a low-frequency alarm disrupted the birds' behavior for at least 15 min. The induction of this behavioral stress response suggests that low-frequency sound alarms in laboratory facilities have the potential to compromise the welfare of laboratory birds.

Keywords: noise stress, avian husbandry, zebra finch (*Taeniopygia guttata*), bird, passerine, animal welfare

INTRODUCTION

The ethics of using animals in research have long been an issue (1–3). More recently the reproducibility of animal research outcomes has also raised concerns (4–8) because the physical and social environment of the laboratory provide significant sources for a range of stimuli that can influence an animal's physiology and behavior, its welfare, and scientific outcomes (9). A number of these concerns focus on variable holding conditions across research facilities (10–12). For example, factors such as lighting, temperature and husbandry procedures can introduce variability as well as being potentially stressful (9, 10, 13, 14). Standardization of laboratory conditions such as using sets of defined acceptable ranges (e.g., for lighting, temperature and so on: (15) is one way in which researchers attempt to decrease the impacts of such confounding variables (16, 17).

But the acoustic environment and noise levels are among those aspects to which little attention has been paid. Although noise is considered a potentially stressful factor for both humans and animals (18–22), there is still a lack of awareness and appreciation of the degree to which laboratory animals might be affected by the environmental noise and how that might impact experimental outcomes (23).

Although the concern about noise in animal laboratory facilities was raised decades ago (24) and despite recent efforts to emphasize the scale of the problem (10, 25, 26),

OPEN ACCESS

Edited by:

Stephanie Torrey,
University of Guelph, Canada

Reviewed by:

Anna E. Stepien,
Friedrich Miescher Institute for
Biomedical Research
(FMI), Switzerland
Jackelyn Kembro,
Universidad Nacional de
Cordoba, Argentina

*Correspondence:

Jessica E. Martin
Jessica.Martin@ed.ac.uk

Specialty section:

This article was submitted to
Animal Behavior and Welfare,
a section of the journal
Frontiers in Veterinary Science

Received: 17 September 2020

Accepted: 03 December 2020

Published: 06 January 2021

Citation:

Corbani TL, Martin JE and Healy SD
(2021) The Impact of Acute Loud
Noise on the Behavior of Laboratory
Birds. *Front. Vet. Sci.* 7:607632.
doi: 10.3389/fvets.2020.607632

comprehensive changes are yet to be seen in laboratory and husbandry procedures: the soundscape of modern animal facilities has changed little over the past 10–20 years (27). Furthermore, descriptions of environmental noise conditions are not requested in the publication guidelines of at least nine major journals that publish research based on animal experimentation (28), while other conditions such as temperature, humidity and light cycle are obligatory for publication in at least one of these journals (28). As a result acoustic conditions are seldom reported in research communications, in contrast to other environmental parameters such as lighting, temperature, and humidity (25).

In the laboratory environment noises are produced from a range of sources including husbandry procedures and facility hardware (25, 27, 29–31). Elevated sound pressures exerted by such features can cause a range of auditory and non-auditory changes in laboratory rodents, at least [reviewed in: (25, 32)] which include the increased production of stress hormones [mice: (33, 34) rats: (35, 36)] cardiovascular damage [rats: (37)], histopathological changes in organs [rats: (38, 39)] decreased body weight [rats: (40)] and fertility [mice: (41, 42) rats: (39)], decrease in behavioral activity [mice: (43)] as well as expression of stress behaviors [e.g., cannibalism in mice, (33)]. Such effects of acoustic stimuli can be life-long, with potential developmental, neural, genetic, and epigenetic consequences (20, 44). Such data from rodents have led to guidelines for laboratory animal care (15) that may or may not be relevant for laboratory birds (45).

There is now considerable evidence for the negative impacts of noise levels on wild birds (46–48) such as temporary physical damage to ears (49), stress responses including increased corticosterone metabolites (50, 51), telomere reduction (52), decreased in metabolic rate (53), decreased nestling size, and increased oxidative status (54), reduction in foraging (55), disturbance to vocal communication and risk perception (51, 56, 57) as well as decreased reproductive success [e.g., (51, 57, 58)]. As the hearing range for birds significantly differs from that of rodents (59), it seems plausible that husbandry practices for rodents are not necessarily applicable for the good management of birds, including songbirds (45). For example, the low-frequency fire alarms use in many animal facilities are adapted to emit sound at frequencies that alternate between 430 and 470 Hz, outside most rodents' auditory sensitive frequency range (60). However, these sounds are within the hearing range of several songbirds used in research, including zebra finches and canaries (61). For these birds, the “silent” fire alarm is not silent.

The impacts of such factors in a laboratory facility on bird behavior, however, have not been directly studied. To determine how an acute noise (low-frequency fire alarm) affected the behavior of laboratory zebra finches, we compared the differences in the duration of behaviors (such as general activity, stationary, foraging, preening and social behavior) from before and after birds were exposed to a routine low-frequency fire alarm test, as well as in comparison with a control (no fire alarm sound). It was hypothesized that the behavioral diversity and frequency performed by the birds would differ from before and after exposure.

MATERIALS AND METHODS

The work was conducted with approval from the Ethical Committee of the School of Biology at the University of St Andrews and from the Veterinary Ethical Review Committee of The Royal (Dick) School of Veterinary Studies at The University of Edinburgh (VERC Reference Number 29.18).

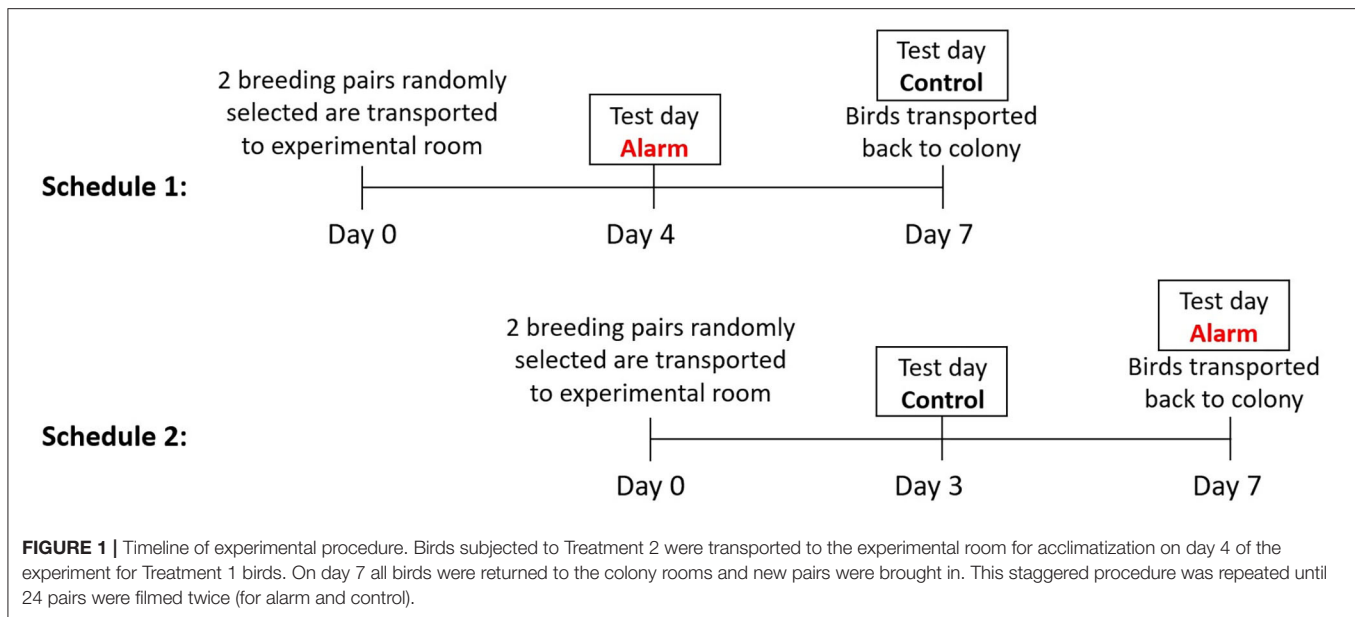
Study Subjects

The subjects were 24 breeding pairs of zebra finches ($n = 48$), aged between 2 and 3 years that had been bred and kept in single-sex free-flight colony rooms in the St Mary's Animal Unit at the Bute Building, University of St Andrews.

Experimental Procedure

In this facility a low-frequency fire alarm (Arrowright Silentone™, UK) simulation is part of the usual weekly laboratory routine. The test occurs every Monday at 13:00. According to the manufacturer the alarm activation generates a sound level of 97 dB (when measured at 450 mm) at a frequency between 430 and 470 Hz (62). During the weekly test, the fire alarm is rung for a period of 10–20 s, with the nearest alarm located 2.1 m away from the experimental room (**Supplementary Figure 1**). The experimental treatment of this experiment included this noise stimulus (see below for details of behavioral recording). The control treatment consisted of recording at the same time on a non-alarm day (Thursdays), where no noise was sounded.

Three to 4 days prior to testing eight birds were selected at random from the colony and were put into male and female pairs in order of capture. This period allowed acclimatization prior to the experimental period and preventing the birds being exposed to multiple alarm sounds. To balance for the order of exposure to either the control (no noise) or the fire alarm, the 24 pairs were equally distributed *via* random allocation to Treatment 1 or 2 (**Figure 1**). All birds were exposed to both treatments. Treatment 1 birds were exposed to the alarm noise on the 1st test day and the control on 2nd test day. Treatment 2 birds were exposed to the control on the 1st test day and the alarm noise on the 2nd test day. The pairing of closely-related birds (siblings and parents) was avoided, and a new individual was randomly selected from colony if such pairing occurred. Each pair was housed in a standardized experimental cage (100 × 50 × 50 cm), with six perches and with pressed wood pellets (Stovies Wood Pellets, Arbuthnott Wood Pellets Ltd., UK) as flooring (**Figure 2**). Birds could not see neighboring pairs (a white opaque sheet separated adjacent cages). All birds had *ad libitum* access to commercial bird seed mix (Johnston & Jeff Foreign Finch Seed, Johnston & Jeff Ltd., UK), supplemented water (Johnson's Vit-Min Drops for Cage Birds, Johnson's Veterinary Products Ltd., UK), cuttlefish, oyster shell grit (OYTA shells, Group Andersen, Spain), and a mineral block (Johnson's Iodised Condition Pek for Small Birds, Johnson's Veterinary Products Ltd., UK). They also received fresh spinach leaves twice a week (not on experimental days) as enrichment. The room was kept on a 14:10 h light:dark cycle, with temperatures between 18.8 and 20.7°C, and humidity levels that ranged between 37 and 55%.



Data collection consisted of video recording of the birds on test days. Filming took place between 12 and 2 p.m., corresponding to intervals of an hour before to an hour following the time of the scheduled fire alarm test. Four HD cameras (two Sony Handycams HDR-CX115, Sony Europe B.V., UK and two Cannon Legrias HFR46 / HFM52, Canon Inc., Japan) were used to record each one of the cages separately and were able to visualize all areas of each cage. When filming was complete for the four pairs, they were returned to the group-housing rooms. All husbandry (e.g., visual health inspection, cleaning, feeding, and water changes) occurred in the experimental room around 3–4 p.m., after filming was completed for the day. Birds were also moved at around this time of day.

Sound levels were recorded in the experimental room using a Thermosense HT-8852 Precision Sound Level Meter with Data Logger (Thermosense Limited, UK), which is sensitive to sound frequencies ranging from 31.5 Hz to 8 KHz. The Thermosense was placed on the floor in the middle of the experimental room, to provide the optimal overview of noise for all four cages, without compromising visualization of behavior. The equipment was adjusted with a fast time weighting (125 ms), for a more accurate estimation of peak sound levels; A-weighted (dBA), to take into account the decrease in hearing sensitivity of both birds and humans for frequencies lower than 1 kHz (63); and registered sound levels over the “automatic” level range (30–130 dB). The dBA levels were recorded every 0.5 s during the entire duration of the video recordings on all test days. Baseline recordings of dBA levels were performed in the empty experimental room prior to testing.

Behavioral Scoring

Behavioral analysis was based on already-established ethograms for zebra finches (64, 65). Behaviors were broadly categorized into

general activity, stationary, foraging, preening, social behavior, and brooding (Table 1). Ethological coding was performed using the event-logging software BORIS 6.3.6 (66). Durations of non-overlapping behavioral states were coded continuously starting an hour before and an hour after the stimulus (alarm/control) interval for both test days. This was done to generate activity budgets for the sample intervals based on the behaviors recorded (Table 1).

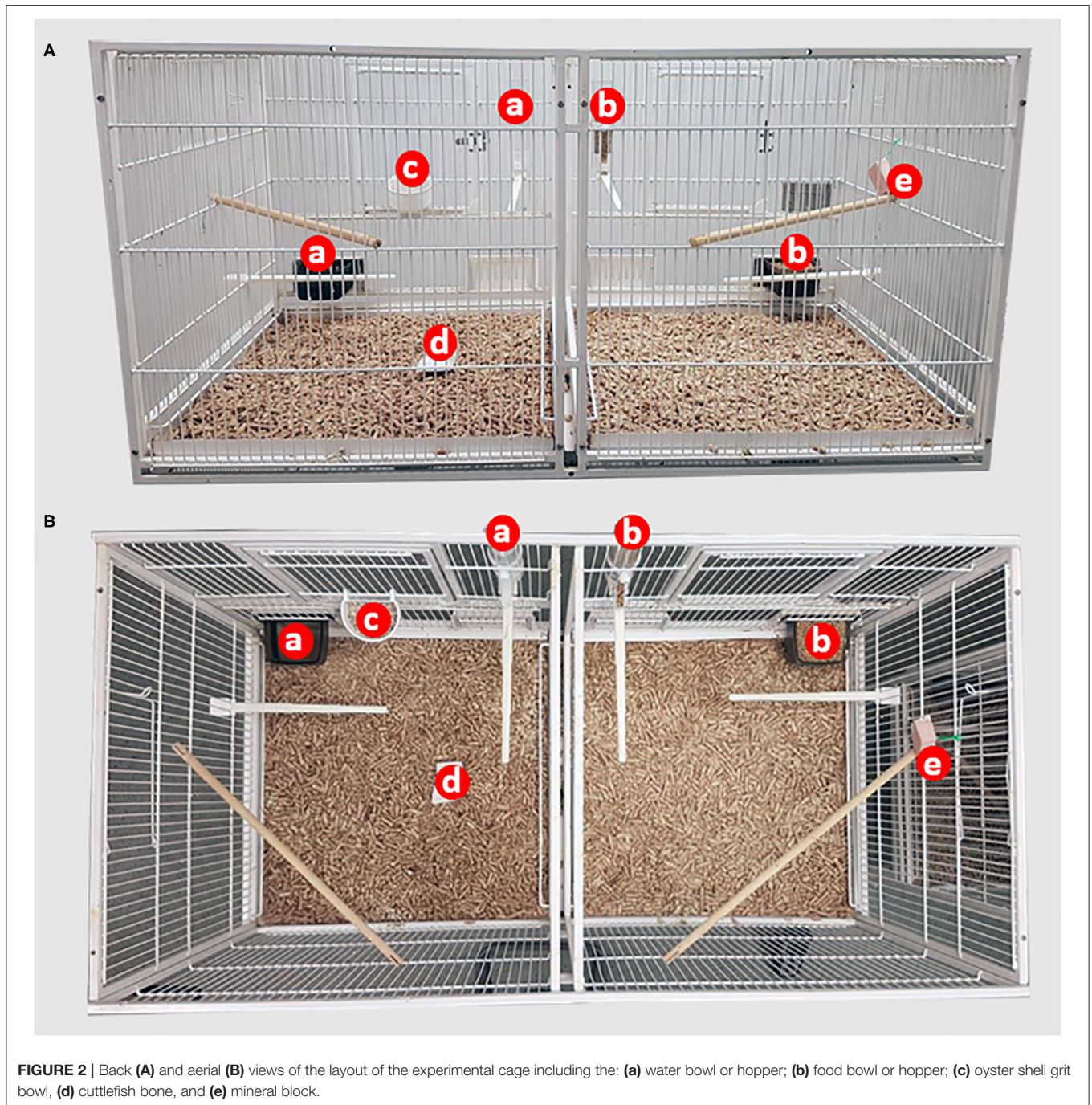
Statistical Analysis

Behavioral and sound pressure data were grouped into four 15-min intervals, using as reference the stimulus interval (alarm/control, time = 0): 30 BEFORE, 15 BEFORE, 15 AFTER, and 30 AFTER. The stimulus interval corresponded to the duration of the alarm test on Mondays and the corresponding time on the Thursday of the same week. Fifteen BEFORE and fifteen AFTER corresponded to the immediate 15 min before and after the stimulus interval, respectively. Thirty BEFORE and thirty AFTER corresponded to the further 15 min intervals within the selected time for analysis.

For the sound pressure data, the mean dBA of each 15 min interval was calculated for each separate day (alarm $n = 8$ and control $n = 6$). The mean dBA time series for each treatment, alarm and control, for when birds were present and absent from the experimental room.

For the behavioral data, the total duration of each behavior for each interval on the two different test days was recorded and differences between the 15 min intervals for each day (15 BEFORE minus 30 BEFORE, 15 AFTER minus 15 BEFORE, 30 AFTER minus 15 AFTER, and 30 AFTER minus 15 BEFORE) for the total duration of each behavior.

Multiple sequential sign tests were performed using Minitab 18[®] Statistical Software (67) and used to determine the intervals



in which differences in behavior were observed after the alarm exposure. Those tests were corrected using a Holm-Bonferroni Sequential Correction (68) through Gaetano's EXCEL calculator (69). R (70) and lme4 (71) were then used to perform linear mixed-effects analyses of the relationship between the behavioral changes and treatment (alarm and control). Treatment, bird sex and the presence of a nest were entered as fixed effects and all interactions between them were included in the model (except

for brooding behaviors, where nest was excluded from the model as only pairs that build performed that behavior). Pair ID and experimental schedule were included as nested random effects. This was done to control for multiple observations of birds housed in the same cage (pair) as well as the confounding impact schedule, as it could not be disassociated from other factors such as nest (unlike the birds in Schedule 1, the majority of birds in Schedule 2 built nests before the first experimental day, a

difference confirmed with a Fisher's Exact-Test, $P = 0.039$, $N = 23$). A model was created for each behavioral category and model fitness was confirmed using the DHARMA package (72), the residuals of all models were in accordance to uniformity assumptions. Model P -values were calculated using Satterthwaite approximations of degrees of freedom provided by the lmerTest package (73).

To further explore the temporal effects on behavioral durations we divided each 15 min period into 5-min intervals (5A = 0–5 min; 10A = 5–10 min; and 15A = 10–15 min post-stimulus period). Within R (70) we used generalized linear mixed models [glmmTMB: (74)] to explore the relationship between the behavioral durations and interactions between the treatment and 5-min intervals. The family link function was set to negative binomial distribution (log transformation). In the minimum models, treatment and 5-min interval were entered as fixed effects, as well as the interaction between them. Pair ID and experimental schedule were included as nested random effects. Model fitness was confirmed using the DHARMA package (72), the residuals of all models were in accordance to uniformity assumptions.

Sound pressure data were analyzed using simple general linear models (GLM) to access the effect of treatment (alarm and control), interval (30 BEFORE, 15 BEFORE, 15 AFTER, and 30 AFTER) and the presence (or absence) of birds in the room on the dBA measures obtained. The stimulus interval was analyzed separately, evaluating only the impacts of treatment day and bird presence. The best-fitting models were selected on the basis of R^2 values and lowest Second-order AIC (AICc), which was

calculated using the package MuMIn (75). Model fitness was evaluated visually through diagnostic plots. Statistical differences between factors of the models were calculated using emmeans package (76) while pwr (77) was used to calculate the statistical power of the tests.

RESULTS

Fire Alarm Duration and Sound Pressure

Sound pressure levels in the experimental room during the stimulus interval were significantly higher on alarm test days than they were on control test days ($F_{1,15} = 141.79$, $P < 0.001$; **Figure 3**), irrespective of the presence of birds ($F_{1,15} = 2.51$, $P = 0.13$). During experimental procedures, the alarm sounded for an average of 17.7 ± 1.25 s.

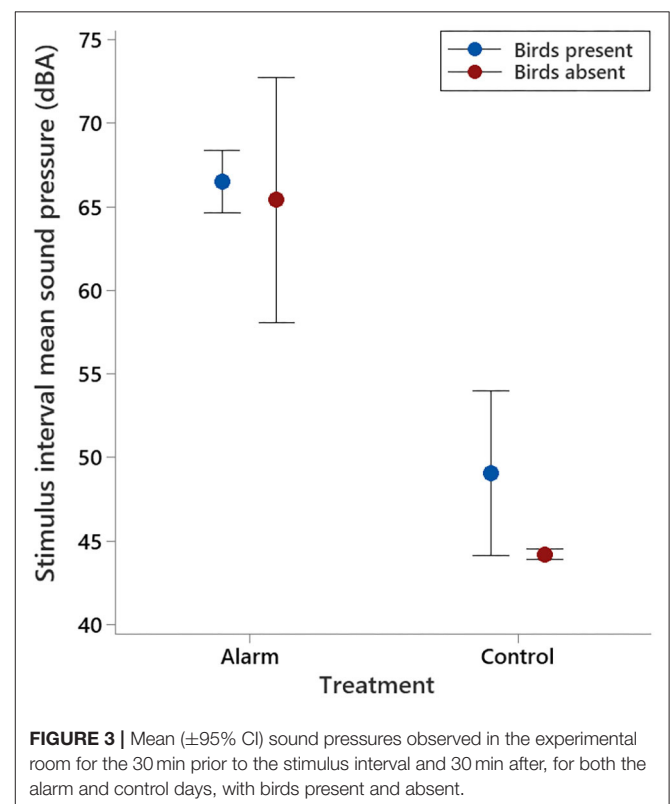
Sound Level Measurements of the Room During Subsequent Intervals

Comparisons of the room sound pressures during the intervals before and after the stimulus interval revealed that dBA pressures were higher and more variable when birds were present in the room ($F_{1,63} = 29.11$, $P < 0.001$; **Figure 4**). Raw sound pressure data indicated that when birds were present in the room dBA tended to drop right after the stimulus during the alarm treatment but not for the controls (see **Figure 4**). Although no interaction between test day and all intervals before and after was observed ($F_{3,63} = 1.46$, $P = 0.23$) when the full dataset was analyzed, the measurements during the 15 min after the stimulus

TABLE 1 | Ethogram describing the behavioral categories behaviors used for the video behavioral coding.

Behavior	Description
Activity	General movement including: flying or moving (without the use of wings) from perch to perch, or perch to ground or moving sideways on a perch or hopping along the ground; OR water baths (diving, preening or flapping wings inside the water)
Stationary	The bird stays on the same spot for more than 5 s not performing any of the other defined behaviors
Foraging	Drinking water from any source OR eating either seeds, cuttlefish bone or grit OR scattering the floor in search of food or nest material If the bird pauses the behavior for a maximum of 3 s and then returned to it the whole duration of that activity was considered as the same "bout" of foraging.
Preening	Grooming the feathers and stretching the wings. If the bird pauses the behavior for a maximum of 3 s and then returned to it the whole duration of that activity was considered as the same "bout" of preening.
Social behavior	Allopreening (bird grooms or is groomed by partner) OR mating
Brooding	Bird sits/stands inside the nest quiet or tidying up nesting material or attempting to nest build.

All behaviors were coded as state behaviors, with a start and finish time (obtaining duration data). As all behaviors were also mutually exclusive, the bird could perform only one of the behavioral categories at a time.



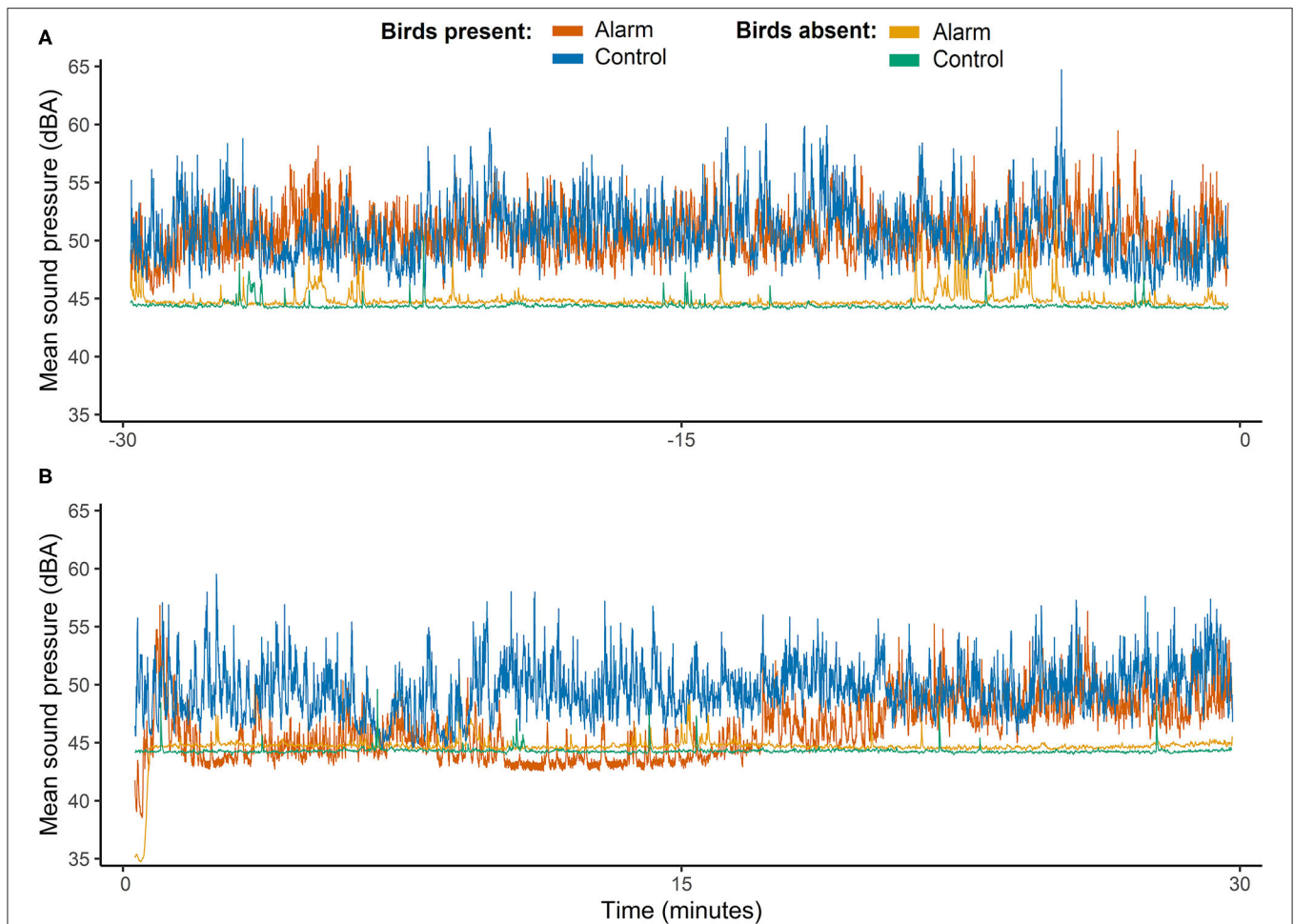


FIGURE 4 | Time series of mean sound pressures (dBA) measured on each of the test days (alarm and control) and represented for days when birds were present and absent of the experimental room. Time axis shows a timescale in minutes of intervals before and after the stimulus interval (alarm and control). Negative numbers correspond to the minutes before the stimulus started (A) and positive values correspond to minutes after the stimulus interval finished (B).

tended to be lower on alarm test days than on control days ($t_{63} = 1.88$, $P = 0.063$; see **Supplementary Figure 2**).

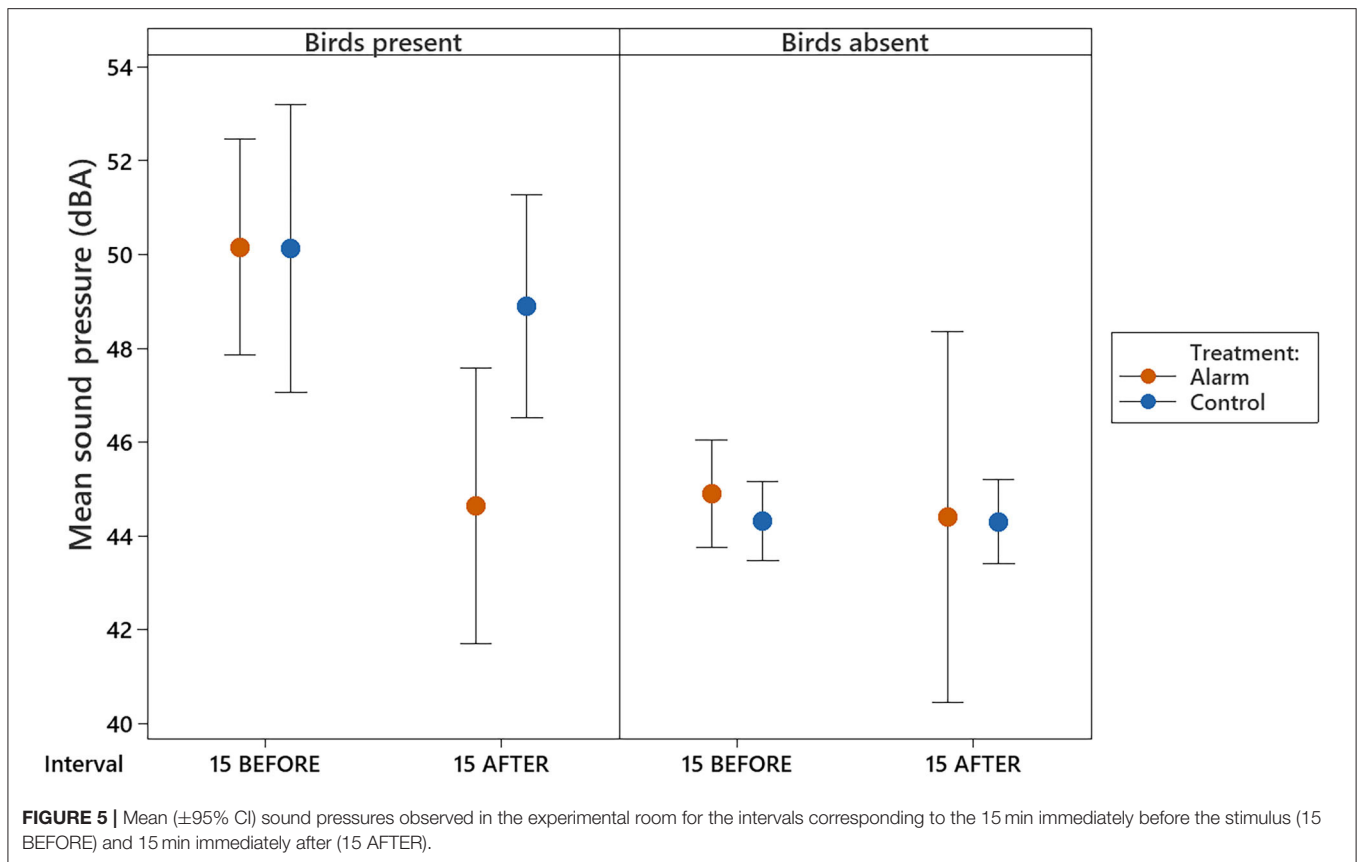
A direct comparison of the data of the intervals 15 BEFORE and 15 AFTER revealed that the levels remained lower 15 min immediately after the alarm than they were 15 min immediately before the alarm ($t_{31} = -3.63$, $P = 0.019$) and lower than control levels ($t_{31} = -3.24$, $P = 0.049$, **Figure 5** and **Supplementary Table 1**). The control levels between the 15 min before and 15 min after the stimulus interval when birds were present did not differ ($t_{31} = -0.67$, $P = 0.99$). Moreover, the sound pressure levels on the 15 min after the stimulus on alarm days did not differ from the sound levels observed when the room was recorded without birds (**Figure 5**).

Behavioral Observations

The behavioral impacts of the alarm were mainly observed during the intervals corresponding to the 15 min before and 15 min after the alarm (see **Supplementary Table 2**), as per observed in the sound level analysis. Thus, we focused on the

behavioral differences observed between the 15 min immediately before the stimulus interval and the 15 min subsequently after the stimulus. During the 15 min immediately after the alarm, the birds significantly reduced their activity ($F_{1,59.96} = 27.40$, $P < 0.001$) and spent more time being stationary ($F_{1,61.11} = 20.28$, $P < 0.001$) than they were on control days (**Figure 6** and also see **Supplementary Figure 3**). The birds also spent more time engaged in social interactions (mainly allopreening) after the alarm disturbance than they did in the control treatment ($F_{1,19.17} = 32.70$, $P < 0.001$). There were no differences in brooding ($F_{1,40} = 1.44$, $P = 0.23$), foraging ($F_{1,58.95} = 1.25$, $P = 0.26$), or preening ($F_{1,61.64} = 1.08$, $P = 0.30$) behaviors between the control and alarm (**Figure 6**).

Assessment of 5-min subset samples within the 15-min intervals (through pairwise comparisons with the before interval) revealed that changes in the birds' behavior were maintained throughout the 15-min period after the alarm: general activity ($\chi^2_{3,545} = 34.82$, $P < 0.001$), stationary ($\chi^2_{3,545} = 21.17$, P



< 0.001), and preening behaviors ($\chi^2_{3,545} = 3.53$, $P = 0.317$; **Figure 7**). Although the alarm treatment birds performed social behaviors for longer than did the control group ($\chi^2_{3,545} = 8.38$, $P < 0.038$), there was substantial variation between pairs. This resulted in a difference only between 15 BEFORE and the 15 AFTER being revealed in the pairwise comparisons. Sampling 5 min interval periods revealed no differences in foraging and brooding behavior.

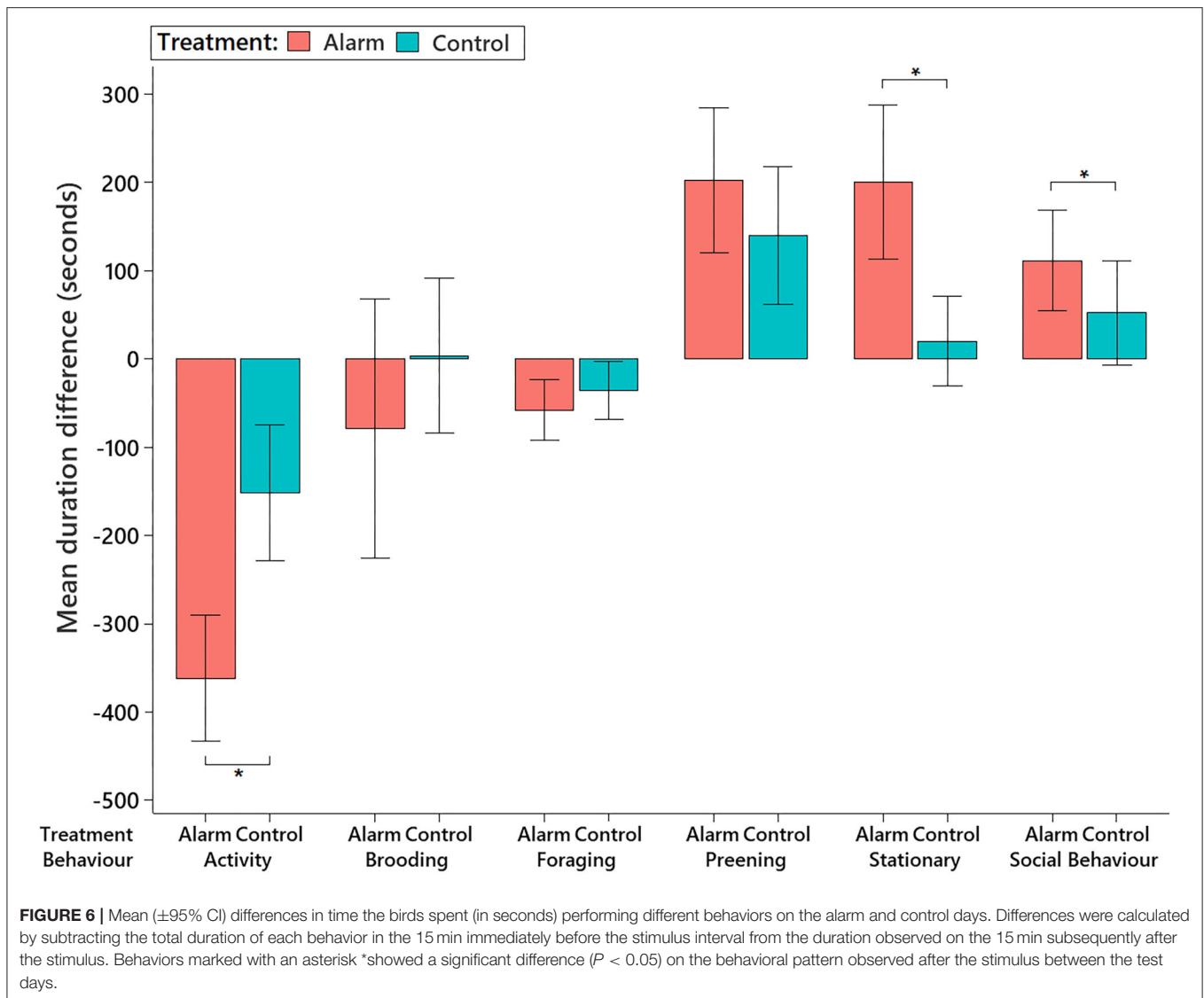
DISCUSSION

Exposure to a low-frequency fire alarm induced behavioral changes in laboratory zebra finches: birds decreased all movements and spent more time on social behaviors (allopreening). Sound pressure level analysis also revealed that the birds themselves generated less noise after alarm exposure. These data provide the first evidence for a welfare impact of low-frequency fire alarms in animal laboratories on zebra finches.

Low-frequency alarms have been designed primarily to minimize the stress responses and reduce physiological impacts in laboratory rodents (60) and the majority of guidelines regarding optimizing welfare are addressed to two of the most common used animals in research, mice and rats (78, 79). The sound pressure levels for the low-frequency alarm are within the hearing range of zebra finches (61, 63), confirming the birds

are able to hear the alarm sound caused by the equipment. When the alarm sounded, birds immediately flew to a perch and either sat motionless or start to preen. That this change in behavior was caused by the alarm is confirmed by the absence of a disruption to the birds' behavior during control days. This reduction in movement could be evidence of a fear response as a decrease in locomotor activity has also been documented in >20 mammal prey species (80, 81) and other passerine birds [e.g., pied flycatchers, *Ficedula hypoleuca*: (82)].

Mice also respond to exposure to a low-frequency fire alarm for 60 s by reducing activity, a response attributed to startle behaviors (43), although the alarm is considered to be inaudible to them (60). Startle responses are defined as fast responses to sudden, intense stimuli that may serve as a protective reaction against injury from a predator and as preparation for a fight/flight response (83, 84). Such reactions are associated with aversive stimuli and may induce a state of fear or anxiety (84), they are also known to be potentialized by fear-conditioning, when a cue predicts an aversive stimuli (84, 85). As latency in movement in face of a threat has also been associated with startle responses in birds [blue jays, *Cyanocitta cristata*: (86)], it seems plausible that the zebra finches' responses to the fire alarm can be considered as startle behaviors. Because the zebra finches remained still and quiet for a much longer period than the mice reported in Povroznik et al. (43), it may be that the birds are even more affected by the alarm disturbance than are mice, perhaps



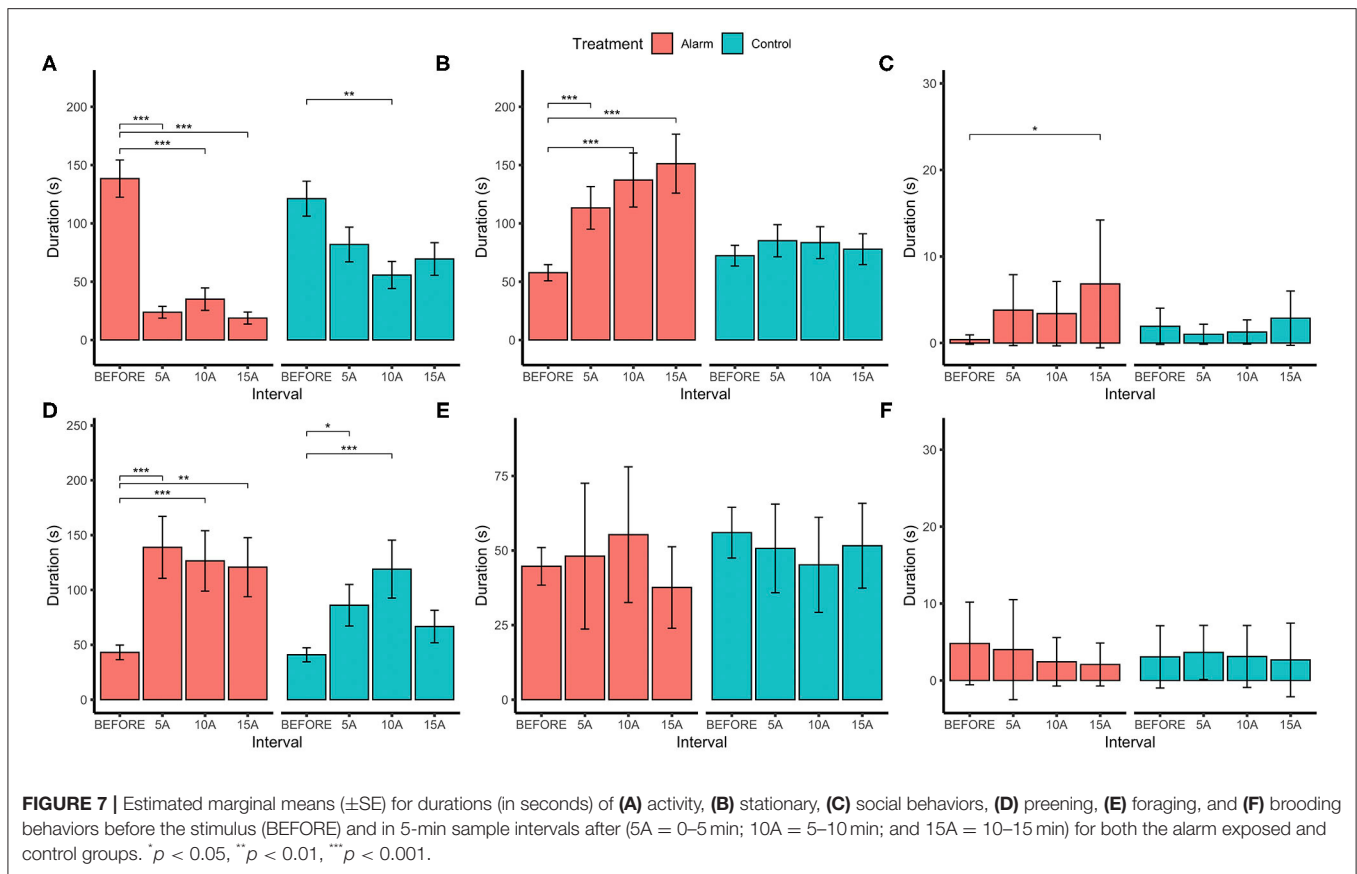
because zebra finches have a higher auditory sensitivity in lower frequencies than mice (59, 60, 63).

The increase in social behaviors after alarm exposure might also be associated with fear responses. Huddling in face of a fearful situation has been reported in several different species [e.g., ungulates: (87); humans: (88); rats: (81)], including birds [penguins: (89)]. The choice of the zebra finches to perch in the middle of the cage in response to the alarm is similar to the reactions of zebra finches to an open-field test (90). Rifá et al. (90) argued that the birds preferred this position as it allowed for the broadest possible field of vision.

The decreased sound pressure observed in the experimental room after alarm exposure is yet more evidence for the behavioral effect of the alarm over the birds' behavior. Zebra finches are known for their highly variable vocal repertoire and constant vocal contact (91–93). It is probable that the fluctuating pattern of sound measurements recorded in the presence of birds

was caused by the birds themselves, from actual vocalizations in combination with activity in the cage, rather than other environmental sources. This interpretation is supported by the lower and less variable levels of sound in the empty room. The decreased sound pressure levels after the alarm to levels similar to those observed in the absence of the animals, suggests that the animals decreased activity and communication after being exposed to the alarm disturbance. The absence of such an effect during control test days, when the dBA levels continued to fluctuate as before the stimulus interval, is evidence that the observed effects were indeed due to the alarm disturbance. Sudden drops in vocalizations can be interpreted as a signal of danger (94, 95) or as an attempt at concealment in face of a predation danger (80, 96).

A behavioral characterization of predator model response for zebra finches was recently attempted by Butler et al. (93). The experiment used an auditory (wing flap sounds) and two virtually



animated visual (flyby and loom) model collared sparrowhawk stimuli to analyse behavioral responses, alarm call presence and call rate changes in captive zebra finches. The zebra finches performed anti-predator flight behaviors toward the looming hawk stimulus and startle/attention behaviors in response to the less threatening wing flap sounds and flyby stimuli. However, the birds did not present any characteristic alarm calls or change their call rate and structure at either 30 s or at 30 min after exposure to any of the three stimuli presented. That result contrasts with the marked decrease in vocal communication observed in the present study, after the fire alarm. Butler et al. (93) identified that the zebra finches' response was stronger toward the most threatening stimulus (looming hawk). Perhaps the difference in response observed in the two experiments could be attributed to the level of perceived threat of the stimuli presented. The fire alarm might have been perceived as higher risk and more stressful than the predator cues presented by Butler et al. (93).

It is, perhaps, surprising that the birds responded as they did, given all the birds were hatched, and had lived, in the facility for \sim 3 years. One might have expected them to have been habituated to the weekly alarm. Although plausible, the behavioral responses that we observed suggest this is not the case and raises concerns about the suitability of such equipment for the use in animal facilities where birds are housed. Although the low-frequency alarm is considered as safe for use near laboratory

rodents [(60); but see (43)], it appears to be a disturbing stimulus for zebra finches.

Repeated aversive noise exposure could produce morphological and biochemical effects in noradrenaline and adrenaline cells (97) and continuous exposure to predatory threats has been shown to induce chronic stress and anxiety (98–101). These long-lasting stress responses can even induce cross-generational consequences for animal welfare (44). Further concerns thus could be raised over the possible cumulative effect of the repeated exposure of the birds to the fire alarm disturbance, which has not been investigated to date.

The changes in behavior induced by the alarm caused variation in the birds' behavioral patterns across the week, which in turn, could potentially impact the results of behavioral experiments (102). Physiological consequences of the noise stress can also produce similar effects, confounding research outcomes and possible reproducibility (7, 9, 25, 102, 103). Such considerations are important for the management of passerine birds in research facilities, as decisions on the "best" housing conditions of such animals are mostly based on expert and experienced keepers' advice (104).

These data provide a basis for the assessment of the acute welfare impacts of ambient noise in laboratory zebra finches. They also suggest that there may be physiological and longer-term behavioral impacts on bird welfare of the use of low-frequency alarms. As the low-frequency alarm noise had

an evident effect on the birds' behavior, we suggest the use of low-frequency sound alarms in laboratory bird facilities may have both detrimental effects on animal welfare (acute behavioral distress response) and on the reliability and reproducibility of research outputs.

DATA AVAILABILITY STATEMENT

The raw data supporting the conclusions of this article will be made available by the authors, without undue reservation, to any qualified researcher upon request.

ETHICS STATEMENT

The animal study was reviewed and approved by the Ethical Committee of the School of Biology at the University of St Andrews and the Veterinary Ethical Review Committee of The Royal (Dick) School of Veterinary Studies at The University of Edinburgh (VERC Reference Number 29.18).

AUTHOR CONTRIBUTIONS

TC and SH contributed to the conception and design of the study. TC did the laboratory practical work, data collection,

and wrote the first draft of the manuscript. TC organized the database and performed the statistical analysis with guidance from both JM and SH. JM and SH made substantial edits to the manuscript, both in substance and style. All authors contributed to manuscript revision, read, and approved the submitted version.

FUNDING

The Roslin Institute is funded by a BBSRC Institute Strategic Program Grant BB/P013759/1.

ACKNOWLEDGMENTS

The authors thank the technicians of St Mary's Animal Unit (SMAU) at the University of St. Andrews as well as the MSc. in Applied Animal Behavior and Animal Welfare at the University of Edinburgh.

SUPPLEMENTARY MATERIAL

The Supplementary Material for this article can be found online at: <https://www.frontiersin.org/articles/10.3389/fvets.2020.607632/full#supplementary-material>

REFERENCES

- Gluck JP, DiPasquale T, Orlans FB, eds. *Applied Ethics in Animal Research: Philosophy, Regulation, and Laboratory Applications*. West Lafayette, IN: Purdue University Press (2002).
- Festing S, Wilkinson R. The ethics of animal research. Talking point on the use of animals in scientific research. *EMBO Rep.* (2007) 8:526–30. doi: 10.1038/sj.embor.7400993
- Fernandes MR, Pedroso AR. Animal experimentation: a look into ethics, welfare and alternative methods. *Rev Assoc Med Bras.* (2017) 63:923–8. doi: 10.1590/1806-9282.63.11.923
- Siegel V. Reproducibility in research. *Dis Model Mech.* (2011) 4:279–80. doi: 10.1242/dmm.008037
- Bustin SA. The reproducibility of biomedical research: sleepers awake! *Biomol Detect Quantif.* (2014) 2:35–42. doi: 10.1016/j.bdq.2015.01.002
- Baker M. Is there a reproducibility crisis? A Nature survey lifts the lid on how researchers view the “crisis” rocking science and what they think will help. *Nature.* (2016) 533:452–5. doi: 10.1038/533452a
- Mogil JS. Laboratory environmental factors and pain behavior: the relevance of unknown unknowns to reproducibility and translation. *Nat Publ Gr.* (2017) 46:136–41. doi: 10.1038/labnan.1223
- Fitzpatrick BG, Koustova E, Wang Y. Getting personal with the “reproducibility crisis”: interviews in the animal research community. *Lab Anim (NY).* (2018) 47:175–7. doi: 10.1038/s41684-018-0088-6
- Barbee RW, Turner PV. Incorporating laboratory animal science into responsible biomedical research. *ILAR J.* (2019) 60:9–16. doi: 10.1093/ilar/ilz017
- Castelhano-Carlos MJ, Baumans V. The impact of light, noise, cage cleaning and in-house transport on welfare and stress of laboratory rats. *Lab Anim.* (2009) 43:311–27. doi: 10.1258/la.2009.0080098
- Faith RE, Huerkamp MJ. Environmental considerations for research animals. In: Hessler JR, Lehner NDM, editors. *Planning and Designing Research Animal Facilities*. Amsterdam: Elsevier (2009). p. 59–83.
- Nielsen BL. Making sense of it all: the importance of taking into account the sensory abilities of animals in their housing and management. *Appl Anim Behav Sci.* (2018) 205:175–80. doi: 10.1016/j.applanim.2018.04.013
- Baker DG, Lipman NS. Factors that can influence animal research. In: Anderson LC, Otto G, Kathleen R, Pritchett-Corning, Whary MT, editors. *Laboratory Animal Medicine*. Amsterdam: Elsevier (2015). p. 1441–96.
- Hogan MC, Norton JN, Reynolds, RP. Environmental Factors: Macroenvironment versus Microenvironment. In: Weichbrod RH, Thompson GAH, Norton JN, editors. *Management of Animal Care and Use Programs in Research, Education, and Testing*. Boca Raton, FL: CRC Press/Taylor and Francis (2018).
- NRC (National Research Council). *Guide for the Care and Use of Laboratory Animals*. 8th ed. Washington, DC: National Academies Press (2011).
- Beynen AC, Gärtner K, Van Zutphen LFM. Standardization of animal experimentation. In: Van Zutphen LFM, Baumans V, Beynen AC, editors. *Principles of Laboratory Animal Science: A Contribution to the Humane Use and Care of Animals and to the Quality of Experimental Results*. Amsterdam: Elsevier (2001). p. 103–10.
- Richter SH, Garner JP, Würbel H. Environmental standardization: cure or cause of poor reproducibility in animal experiments? *Nat Methods.* (2009) 6:257–61. doi: 10.1038/nmeth.1312
- Borg E. Physiological aspects of the effects of sound on man and animals. *Acta Otolaryngol.* (1978) 86:80–5. doi: 10.3109/00016487809123480
- Burrow A, Day HEW, Campeau S. A detailed characterization of loud noise stress: intensity analysis of hypothalamo-pituitary-adrenocortical axis and brain activation. *Brain Res.* (2005) 1062:63–73. doi: 10.1016/j.brainres.2005.09.031
- Right CR, Swaddle JP. How and why environmental noise impacts animals: an integrative, mechanistic review. *Ecol Lett.* (2011) 14:1052–61. doi: 10.1111/j.1461-0248.2011.01664.x
- Baumans V. The impact of the environment on laboratory animals. In: Andersen ML, Tufik S, editors. *Rodent Model as Tools in Ethical Biomedical Research*. Switzerland: Springer International Publishing 2016. p. 13–21.
- Münzel T, Sørensen M, Schmidt F, Schmidt E, Steven S, Kröller-Schön S, et al. The adverse effects of environmental noise exposure on oxidative stress and cardiovascular risk. *Antioxid Redox Signal.* (2018) 28:873–908. doi: 10.1089/ars.2017.7118
- Baldwin AL, Schwartz GE, Hopp DH. Are investigators aware of environmental noise in animal facilities and that this noise may

- affect experimental data? *J Am Assoc Lab Anim Sci.* (2007) 46:45–51. Available online at: <https://www.ingentaconnect.com/content/aalas/jaalas/2007/00000046/00000001/art00008>
24. Anthony A. Criteria for acoustics in animal housing. *Lab Anim Care.* (1963) 2:340–50.
 25. Turner JG, Bauer CA, Rybak LP. Noise in animal facilities: why it matters. *J Am Assoc Lab Anim Sci.* (2007) 46:10–3. Available online at: <https://www.ingentaconnect.com/content/aalas/jaalas/2007/00000046/00000001/art00001#>
 26. Voellmy IK, Purser J, Simpson SD, Radford AN. Effects of previous acoustic experience on behavioral responses to experimental sound stimuli and implications for research. In: Popper A, Hawkins A, editors. *The Effects of Noise on Aquatic Life II. Advances in Experimental Medicine and Biology.* New York, NY: Springer (2016). p. 1191–6.
 27. Lauer AM, May BJ, Hao ZJ, Watson J. Analysis of environmental sound levels in modern rodent housing rooms. *Lab Anim (NY).* (2009) 38:154–60. doi: 10.1038/labani0509-154
 28. Hooijmans CR, Leenaars M, Ritskes-Hoitinga M. A gold standard publication checklist to improve the quality of animal studies, to fully integrate the Three Rs, and to make systematic reviews more feasible. *Altern to Lab Anim.* (2010) 38:167–82. doi: 10.1177/026119291003800208
 29. Peterson EA. Noise and laboratory animals. *Lab Anim Sci.* (1980) 30:422–39.
 30. Voipio H-M, Nevalainen T, Halonen P, Hakumäki M, Björk E. Role of cage material, working style and hearing sensitivity in perception of animal care noise. *Lab Anim.* (2006) 40:400–9. doi: 10.1258/002367706778476334
 31. Naff KA, Riva CM, Craig SL, Gray KN. Noise produced by vacuuming exceeds the hearing thresholds of C57Bl/6 and CD1 mice. *J Am Assoc Lab Anim Sci.* (2007) 46:52–7. Available online at: <https://www.ingentaconnect.com/content/aalas/jaalas/2007/00000046/00000001/art00009>
 32. Turner JG, Parrish JL, Hughes LF, Toth LA, Caspary DM. Hearing in laboratory animals: strain differences and nonauditory effects of noise. *Comp Med.* (2005) 55:12–23. doi: 10.1016/j.biotechadv.2011.08.021.Secreted
 33. Atanasov NA, Sargent JL, Parmigiani JP, Palme R, Diggs HE. Characterization of train-induced vibration and its effect on fecal corticosterone metabolites in mice. *J Am Assoc Lab Anim Sci.* (2015) 54:737–44.
 34. Jensen K, Hahn NE, Palme R, Saxton K, Francis DD. Vacuum-cleaner noise and acute stress responses in female C57BL/6 mice (*Mus musculus*). *J Am Assoc Lab Anim Sci.* (2010) 49:300–6.
 35. Barrett AM, Stockham MA. The effect of housing conditions and simple experimental procedures upon the corticosterone level in the plasma of rats. *J Endocrinol.* (1963) 26:97–105. doi: 10.1677/joe.0.0260097
 36. Toukh M, Gordon SP, Othman M. Construction noise induces hypercoagulability and elevated plasma corticosteroids in rats. *Clin Appl Thromb.* (2014) 20:710–5. doi: 10.1177/1076029613483168
 37. Baldwin AL, Bell IR. Effect of noise on microvascular integrity in laboratory rats. *J Am Assoc Lab Anim Sci.* (2007) 46:58–65. Available online at: <https://www.ingentaconnect.com/content/aalas/jaalas/2007/00000046/00000001/art00010>
 38. Baldwin AL, Primeau RL, Johnson WE. Effect of noise on the morphology of the intestinal mucosa in laboratory rats. *J Am Assoc Lab Anim Sci.* (2006) 45:74–82. Available online at: <https://www.ingentaconnect.com/content/aalas/jaalas/2006/00000045/00000001/art00011>
 39. Zymantiene J, Zelvyte R, Pampariene I, Anuliene A, Juodziukyniene N, Kantautaitė J, et al. Effects of long-term construction noise on health of adult female Wistar rats. *Pol J Vet Sci.* (2017) 20:155–65. doi: 10.1515/pjvs-2017-0020
 40. Dallman MF, Akana SF, Bell ME, Bhatnagar S, Choi S, Chu A, et al. Warning! Nearby construction can profoundly affect your experiments. *Endocrine.* (1999) 11:111–3. doi: 10.1385/ENDO:11:2:111
 41. Rasmussen S, Glickman G, Norinsky R, Quimby FW, Tolwani RJ. Construction noise decreases reproductive efficiency in mice. *J Am Assoc Lab Anim Sci.* (2009) 48:363–70. Available online at: <https://www.ingentaconnect.com/content/aalas/jaalas/2009/00000048/00000004/art00004#>
 42. Zamora BM, Jiang M, Wang Y, Chai M, Lawson PT, Lawson GW. Decreased blastocyst production in mice exposed to increased rack noise. *J Am Assoc Lab Anim Sci.* (2009) 48:486–91. Available online at: <https://www.ingentaconnect.com/content/aalas/jaalas/2009/00000048/00000005/art00004>
 43. Povroznik JM, Faith RE, Kessler MJ, Ali FN, Kosik J, Prince S, et al. Locomotor effects of a low-frequency fire alarm on C57BL/6 male mice: a preliminary study. *Lab Anim.* (2017) 51:647–51. doi: 10.1177/0023677217711966
 44. Jensen P. Behaviour epigenetics—The connection between environment, stress and welfare. *Appl Anim Behav Sci.* (2014) 157:1–7. doi: 10.1016/j.applanim.2014.02.009
 45. Bateson M, Feenders G. The use of passerine bird species in laboratory research: implications of basic biology for husbandry and welfare. *ILAR J.* (2010) 51:394–408. doi: 10.1093/ilar.51.4.394
 46. Francis CD, Ortega CP, Cruz A. Noise pollution changes avian communities and species interactions. *Curr Biol.* (2009) 19:1415–9. doi: 10.1016/j.cub.2009.06.052
 47. Ortega CP. Effects of noise pollution on birds: a brief review of our knowledge. *Ornithol Monogr.* (2012) 74:6–22. doi: 10.1525/om.2012.74.1.6
 48. Dooling RJ, Popper AN. Some lessons from the effects of highway noise on birds. *Proc. Mtgs. Acoust.* (2016) 27:010004. doi: 10.1121/2.0000244
 49. Dooling RJ, Popper AN. *The Effects of Highway Noise on Birds, Report Prepared for: The California Department of Transportation Division of Environmental Analysis.* Sacramento (2007). Available online at: <http://dot.ca.gov/-/media/dot-media/programs/environmental-analysis/documents/env/bio-effects-hwy-noise-birds-100707-a11y.pdf>
 50. Blickey JL, Word KR, Krakauer AH, Phillips JL, Sells SN, Taff CC, et al. Experimental chronic noise is related to elevated fecal corticosteroid metabolites in lekking male greater sage-grouse (*Centrocercus urophasianus*). *PLoS ONE.* (2012) 7:e50462. doi: 10.1371/journal.pone.0050462
 51. Kleist NJ, Guralnick RP, Cruz A, Lowry CA, Francis CD, McEwen BS. Chronic anthropogenic noise disrupts glucocorticoid signaling and has multiple effects on fitness in an avian community. *Proc Natl Acad Sci USA.* (2018) 115:648–57. doi: 10.1073/pnas.1709200115
 52. Meillère A, Brischox F, Ribout C, Angelier F. Traffic noise exposure affects telomere length in nestling house sparrows. *Biol Lett.* (2015) 11:20150559. doi: 10.1098/rsbl.2015.0559
 53. Brischox F, Meillère A, Dupoué A, Lourdais O, Angelier F. Traffic noise decreases nestlings' metabolic rates in an urban exploiter. *J Avian Biol.* (2017) 48:905–09. doi: 10.1111/jav.01139
 54. Injaian AS, Taff CC, Patricelli GL. Experimental anthropogenic noise impacts avian parental behaviour, nestling growth and nestling oxidative stress. *Anim Behav.* (2018) 136:31–9. doi: 10.1016/j.anbehav.2017.12.003
 55. Quinn JL, Whittingham MJ, Butler SJ, Quinn WC, Whittingham JL, Butler MJ, et al. Noise, predation risk compensation and vigilance in the chaffinch *Fringilla coelebs*. *J Avian Biol.* (2006) 37:601–8. doi: 10.1111/j.2006.0908-8857.03781.x
 56. Habib L, Bayne EM, Boutin S. Chronic industrial noise affects pairing success and age structure of ovenbirds *Seiurus aurocapilla*. *J Appl Ecol.* (2007) 44:176–84. doi: 10.1111/j.1365-2664.2006.01234.x
 57. Slabbekoorn H, Ripmeester EAP. Birdsong and anthropogenic noise: implications and applications for conservation. *Mol Ecol.* (2008) 17:72–83. doi: 10.1111/j.1365-294X.2007.03487.x
 58. Crino OL, Johnson EE, Blickey JL, Patricelli GL, Breuner CW. Effects of experimentally elevated traffic noise on nestling white-crowned sparrow stress physiology, immune function and life history. *J Exp Biol.* (2013) 216:2055–62. doi: 10.1242/jeb.081109
 59. Heffner HE, Heffner RS. Hearing ranges of laboratory animals. *J Am Assoc Lab Anim Sci.* (2007) 46:20–2. Available online at: <https://www.ingentaconnect.com/content/aalas/jaalas/2007/00000046/00000001/art00003>
 60. Clough G, Fasham JAL. A “silent” fire alarm. *Lab Anim.* (1975) 9:193–6. doi: 10.1258/00236775780994538
 61. Okanoya K, Dooling RJ. Hearing in passerine and psittacine birds: a comparative study of absolute and masked auditory thresholds. *J Comp Psychol.* (1987) 101:7–15. doi: 10.1037/0735-7036.101.1.7
 62. Arrowmigh. *Silentone™ Fire and Security Alarm (V.1_18.03.03).* (2014). Available online at: <http://www.arrowmigh.com/pdfs/silentone-new.pdf> (accessed July 21, 2018).
 63. Hashino E, Okanoya K. Auditory sensitivity in the zebra finch (*Poephila guttata castanotis*). *J Acoust Soc Jap.* (1989) 10:51–2. doi: 10.1250/ast.10.51
 64. Figuerero AJ, Ross DM, Petrinovich L. The quantitative ethology of the zebra finch: a study in comparative psychometrics. *Multivariate Behav Res.* (1992) 27:435–58. doi: 10.1207/s15327906mbr2703_7

65. Jacobs H, Smith N, Smith P, Smyth L, Yew P, Saibaba P, et al. Zebra finch behaviour and effect of modest enrichment of standard cages. *Anim Welf.* (1995) 4:3–9.
66. Friard O, Gamba M. BORIS: a free, versatile open-source event-logging software for video/audio coding and live observations. *Methods Ecol Evol.* (2016) 7:1325–30. doi: 10.1111/2041-210X.12584
67. Minitab Inc. *Minitab Statistical Software.* (2010). Available online at: www.minitab.com (accessed July 10, 2018).
68. Holm S. A simple sequentially rejective multiple test procedure. *Scand J Stat.* (1979) 6:65–70. Available online at: <http://www.jstor.org/stable/4615733> (accessed July 10, 2018).
69. Gaetano J. *Holm-Bonferroni Sequential Correction: An EXCEL Calculator—v.1.2* (2013).
70. R Core Team. *R: A Language and Environment for Statistical Computing.* Vienna (2018) Available online at: www.r-project.org (accessed November 21, 2020).
71. Bates D, Mächler M, Bolker B, Walker S. Fitting linear mixed-effects models using {lme4}. *J Stat Softw.* (2015) 67:1–48. doi: 10.18637/jss.v067.i01
72. Hartig F. *DHARMA: Residual Diagnostics for Hierarchical (Multi-Level/Mixed) Regression Models.* (2018). R package version 0.2.0. Available online at: <http://cran.r-project.org/package=DHARMA> (accessed July 10, 2018).
73. Kuznetsova A, Brockhoff PB, Christensen RHB. {lmerTest} Package: tests in linear mixed effects models. *J Stat Softw.* (2017) 82:1–26. doi: 10.18637/jss.v082.i13
74. Brooks ME, Kristensen K, van Benthem KJ, Magnusson A, Berg CW, Nielson A, et al. glmmTMB balances speed and flexibility among packages for zero-inflated generalized linear mixed modeling. *R J.* (2017) 9:378–400. doi: 10.32614/RJ-2017-066
75. Barton K. *MuMIn: Multi-Model Inference.* (2018). R package version 1.40.4. Available online at: <http://cran.r-project.org/package=MuMIn> (accessed July 10, 2018).
76. Lenth R. *emmeans: Estimated Marginal Means, aka Least-Squares Means.* (2018). R package version 1.2.2. Available online at: <http://cran.r-project.org/package=emmeans> (accessed July 10, 2018).
77. Champely S. *pwr: Basic Functions for Power Analysis.* (2018). R package version 1.2-2. Available online at: <http://cran.r-project.org/package=pwr> (accessed July 10, 2018).
78. European Commission. *2019 Report on the Statistics on the Use of Animals for Scientific Purposes in the Member States of the European Union in 2015–2017.* Brussels (2020). Available online at: <http://ec.europa.eu/info/sites/info/files/com-2020-16-fl-en-main-part-1.pdf> (accessed August 25, 2020).
79. Home Office. *Annual Statistics of Scientific Procedures on Living Animals Great Britain 2019.* (2020). Available online at: https://assets.publishing.service.gov.uk/government/uploads/system/uploads/attachment_data/file/901224/annual-statistics-scientific-procedures-living-animals-2019.pdf (accessed August 25, 2020).
80. Apfelbach R, Blanchard CD, Blanchard RJ, Hayes RA, McGregor IS. The effects of predator odors in mammalian prey species: a review of field and laboratory studies. *Neurosci Biobehav Rev.* (2005) 29:1123–44. doi: 10.1016/j.neubiorev.2005.05.005
81. Kendig MD, Bowen MT, Kemp AH, McGregor IS. Predatory threat induces huddling in adolescent rats and residual changes in early adulthood suggestive of increased resilience. *Behav Brain Res.* (2011) 225:405–14. doi: 10.1016/j.bbr.2011.07.058
82. Tilgar V, Moks K, Saag P. Predator-induced stress changes parental feeding behavior in pied flycatchers. *Behav Ecol.* (2011) 22:23–8. doi: 10.1093/beheco/arq164
83. Koch M, Schnitzler HU. The acoustic startle response in rats. Circuits mediating evocation, inhibition and potentiation. *Behav Brain Res.* (1997) 89:35–49. doi: 10.1016/S0166-4328(97)02296-1
84. Koch M. The neurobiology of startle. *Prog Neurobiol.* (1999) 59:107–28. doi: 10.1016/S0301-0082(98)00098-7
85. Brown JS, Kalish HI, Farber IE. Conditioned fear as revealed by magnitude of startle response to an auditory stimulus. *J Exp Psychol.* (1951) 41:317–28. doi: 10.1037/h0060166
86. Vaughan FA. Startle responses of blue jays to visual stimuli presented during feeding. *Anim Behav.* (1983) 31:385–96. doi: 10.1016/S0003-3472(83)80057-8
87. Fryxell JM. Aggregation and migration by grazing ungulates in relation to resources and predators. In: Sinclair ARE, Arcese P, editors. *Serengeti II: Dynamics, Management, and Conservation of an Ecosystem.* Chicago, IL: University of Chicago Press (1995). p. 257–73.
88. Gump BB, Kulik JA. Stress, affiliation, and emotional contagion. *J Pers Soc Psychol.* (1997) 72:305–19. doi: 10.1037/0022-3514.72.2.305
89. Kirkwood R, Robertson G. The occurrence and purpose of huddling by emperor penguins during foraging trips. *Emu Austral Ornithol.* (1999) 99:40–5. doi: 10.1071/MU99006
90. Rifá H, Alonso Y, Ortega JE, Naranjo JM. Use of space in open field by zebra finches. *Percept Mot Skills.* (1992) 75:1127–33. doi: 10.2466/pms.1992.75.3f.1127
91. Zann RA. *The Zebra Finch: A Synthesis of Field and Laboratory Studies.* Oxford: Oxford University Press (1996).
92. Elie JE, Theunissen FE. The vocal repertoire of the domesticated zebra finch: a data-driven approach to decipher the information-bearing acoustic features of communication signals. *Anim Cogn.* (2016) 19:285–315. doi: 10.1007/s10071-015-0933-6
93. Butler NE, Magrath RD, Peters RA. Lack of alarm calls in a gregarious bird: models and videos of predators prompt alarm responses but no alarm calls by zebra finches. *Behav Ecol Sociobiol.* (2017) 71:113. doi: 10.1007/s00265-017-2343-z
94. Dapper AL, Baugh AT, Ryan MJ. The sounds of silence as an alarm cue in Túngara frogs, *Physalaemus pustulosus.* *Biotropica.* (2011) 43:380–5. doi: 10.1111/j.1744-7429.2010.00707.x
95. Haff TM, Horn AG, Leonard ML, Magrath RD. Conspicuous calling near cryptic nests: a review of hypotheses and a field study on white-browed scrubwrens. *J Avian Biol.* (2015) 46:289–302. doi: 10.1111/jav.00622
96. Lima SL, Dill LM. Behavioral decisions made under the risk of predation: a review and prospectus. *Can J Zool.* (1990) 68:619–40. doi: 10.1139/z90-092
97. Gesi M, Lenzi P, Alessandri MG, Ferrucci M, Fornai F, Paparelli A. Brief and repeated noise exposure produces different morphological and biochemical effects in noradrenaline and adrenaline cells of adrenal medulla. *J Anat.* (2002) 200:159–68. doi: 10.1046/j.0021-8782.2001.00014.x
98. Clinchy M, Zanette L, Boonstra R, Wingfield JC, Smith JNM. Balancing food and predator pressure induces chronic stress in songbirds. *Proc R Soc B.* (2004) 271:2473–9. doi: 10.1098/rspb.2004.2913
99. Clinchy M, Sheriff MJ, Zanette LY. Predator-induced stress and the ecology of fear. *Funct Ecol.* (2013) 27:56–65. doi: 10.1111/1365-2435.12007
100. Adamec RE, Blundell J, Burton P. Neural circuit changes mediating lasting brain and behavioral response to predator stress. *Neurosci Biobehav Rev.* (2005) 29:1225–41. doi: 10.1016/j.neubiorev.2005.05.007
101. Adamec RE, Head D, Blundell J, Burton P, Berton O. Lasting anxiogenic effects of feline predator stress in mice: sex differences in vulnerability to stress and predicting severity of anxiogenic response from the stress experience. *Physiol Behav.* (2006) 88:12–29. doi: 10.1016/j.physbeh.2006.03.005
102. Lewejohann L, Reinhard C, Schrewe A, Brandewiede J, Haemisch A, Görtz N, et al. Environmental bias? Effects of housing conditions, laboratory environment and experimenter on behavioral tests. *Genes. Brain Behav.* (2006) 5:64–72. doi: 10.1111/j.1601-183X.2005.00140.x
103. Poole T. Happy animals make good science. *Lab Anim.* (1997) 31:116–24. doi: 10.1258/002367797780600198
104. Collins SA, Archer JA, Barnard CJ. Welfare and mate choice in zebra finches: effect of handling regime and presence of cover. *Anim Welf.* (2008) 17:11–7. Available online at: <https://www.ingentaconnect.com/content/ufaw/aw/2008/00000017/00000001/art00002>

Conflict of Interest: The authors declare that the research was conducted in the absence of any commercial or financial relationships that could be construed as a potential conflict of interest.

Copyright © 2021 Corbani, Martin and Healy. This is an open-access article distributed under the terms of the Creative Commons Attribution License (CC BY). The use, distribution or reproduction in other forums is permitted, provided the original author(s) and the copyright owner(s) are credited and that the original publication in this journal is cited, in accordance with accepted academic practice. No use, distribution or reproduction is permitted which does not comply with these terms.