



Pharmacokinetic–Pharmacodynamic Modeling of Enrofloxacin Against *Escherichia coli* in Broilers

KaNa Sang^{1,2†}, HaiHong Hao^{1,2†}, LingLi Huang^{1,2*}, Xu Wang³ and ZongHui Yuan^{1,2,3*}

¹National Reference Laboratory of Veterinary Drug Residues (HZAU), Huazhong Agricultural University, Wuhan, China, ²MAO Key Laboratory for Detection of Veterinary Drug Residues, Huazhong Agricultural University, Wuhan, China, ³MOA Laboratory for Risk Assessment of Quality and Safety of Livestock and Poultry Products, Huazhong Agricultural University, Wuhan, China

OPEN ACCESS

Edited by:

Guillermo Tellez,
University of Arkansas, USA

Reviewed by:

Sherry Layton,
Vetanco, Argentina
Vivek A. Kuttappan,
University of Arkansas, USA

*Correspondence:

Lingli Huang
huanglingli@mail.hzau.edu.cn;
ZongHui Yuan
yuan5802@mail.hzau.edu.cn

[†]KaNa Sang and HaiHong Hao have contributed equally to this work.

Specialty section:

This article was submitted to
Veterinary Infectious Diseases,
a section of the journal
Frontiers in Veterinary Science

Received: 17 August 2015

Accepted: 15 December 2015

Published: 07 January 2016

Citation:

Sang K, Hao H, Huang L, Wang X
and Yuan Z (2016) Pharmacokinetic–
Pharmacodynamic Modeling of
Enrofloxacin Against *Escherichia coli*
in Broilers.
Front. Vet. Sci. 2:80.
doi: 10.3389/fvets.2015.00080

The purpose of the present study was to establish a pharmacokinetic/pharmacodynamic (PK/PD) modeling approach for the dosage schedule design and decreasing the emergence of drug-resistant bacteria. The minimal inhibitory concentration (MIC) of 929 *Escherichia coli* isolates from broilers to enrofloxacin and ciprofloxacin was determined following CLSI guidance. The MIC₅₀ was calculated as the populational PD parameter for enrofloxacin against *E. coli* in broilers. The 101 *E. coli* strains with MIC closest to the MIC₅₀ (0.05 µg/mL) were submitted for serotype identification. The 13 *E. coli* strains with O and K serotype were further utilized for determining pathogenicity in mice. Of all the strains tested, the *E. coli* designated strain Anhui 112 was selected for establishing the disease model and PK/PD study. The PKs of enrofloxacin after oral administration at the dose of 10 mg/kg body weights (BW) in healthy and infected broilers was evaluated with high-performance liquid chromatography (HPLC) method. For intestinal contents after oral administration, the peak concentration (C_{max}), the time when the maximum concentration reached (T_{max}), and the area under the concentration-time curve (AUC) were 21.69–31.69 µg/mL, 1.13–1.23 h, and 228.97–444.86 µg h/mL, respectively. The MIC and minimal bactericidal concentration (MBC) of enrofloxacin against *E. coli* (Anhui 112) in Mueller–Hinton (MH) broth and intestinal contents were determined to be similar, 0.25 and 0.5 µg/mL respectively. In this study, the sum of concentrations of enrofloxacin and its metabolite (ciprofloxacin) was used for the PK/PD integration and modeling. The *ex vivo* growth inhibition data were fitted to the sigmoid E_{max} (Hill) equation to provide values for intestinal contents of 24 h area under concentration-time curve/MIC ratios (AUC_{0–24 h}/MIC) producing, bacteriostasis (624.94 h), bactericidal activity (1065.93 h) and bacterial eradication (1343.81 h). PK/PD modeling was established to simulate the efficacy of enrofloxacin for different dosage regimens. By model validation, the protection rate was 83.3%, demonstrating that the dosage regimen of 11.9 mg/kg BW every 24 h during 3 days provided great therapeutic significance. In summary, the purpose of the present study was to first design a dosage regimen for the treatment *E. coli* in broilers by enrofloxacin using PK/PD integrate model and confirm that this dosage regimen presents less risk for emergence of fluoroquinolone resistance.

Keywords: enrofloxacin, *Escherichia coli*, PK/PD modeling, broiler, intestinal content

INTRODUCTION

Antimicrobial resistance is a principal threat to both animals and humans, the main reason for the increasing bacterial resistance is the overuse and misuse of antibiotics. Optimizing the dosage schedules is essential for achieving clinical cures and minimizing the emergence of antimicrobial drug resistance (1, 2). Currently, the optimal dose regimen should be calculated according to the relationship between pharmacokinetics (PKs) and pharmacodynamics (PD) (3). PK/PD modeling can reflect the relationship between the drug, the bacteria, and the animals. It has been demonstrated in many studies that the integration and modeling of the relationship between PK and PD can quantify the potency and efficacy of antimicrobials against target pathogens and provide a basis for the dose optimization (4–7).

PK/PD modeling can be used to evaluate the clinical efficacy of antimicrobial agents (4, 8). The most widely used PK parameters are the area under the plasma concentration-time curve (AUC) and the maximum plasma concentration (C_{max}). The most commonly used PD parameters include minimal inhibitory concentration (MIC) and time-kill curve. The integration of PK and PD establishes a mathematical and theoretical link between them. The three PK/PD parameters are AUC/MIC ratio, C_{max} /MIC ratio, and the percentage of a 24-h time period that the unbound drug concentration exceeds the MIC ($T > MIC$) (7, 9, 10). Fluoroquinolones are classified as typical concentration-dependent drugs, the initially reported AUC/MIC and C_{max} /MIC are better predictors than $T > MIC$ for the antibacterial effect (11, 12). Therefore, it is very important to determine the AUC/MIC value of enrofloxacin against *Escherichia coli* in broilers.

Escherichia coli is a Gram-negative facultative anaerobe, it is a frequent cause of septicemia, Enterocolitis, and diffuse peritonitis. Colibacillosis has caused great economic losses to the poultry industry and commonly fluoroquinolones are used for the treatment (13–15). At the same time, the serious abuse of fluoroquinolones in clinical settings has been implicated in treatment dissatisfaction or even treatment failure, it also contributes to the emergence of bacterial antibiotic resistance.

Pharmacokinetics of enrofloxacin has already been studied in many species, including calves, turkeys, horses, goats, sheep and pigs (16–21); however, studies on the PK of enrofloxacin in infected animals are quite few even though the PK parameters in infected animals are more close to the clinical conditions (22). The metabolism of enrofloxacin to ciprofloxacin in broilers is limited to 5 and 10% (23, 24). There is some research on the PK of enrofloxacin in intestinal contents (25, 26), but limited data are available regarding the PK/PD in broiler intestinal contents.

The objectives of the study were to: (1) investigate the population MIC and select clinical strains with higher pathogenicity for establishing bacterial infected model, (2) determine the PK of enrofloxacin orally administrated in healthy and infected broilers, (3) determine the PD of enrofloxacin against clinical *E. coli* pathogenic strains, (4) use the PK/PD model to optimize the dosage regimen of enrofloxacin against colibacillosis in broilers, and (5) validate the model to verify the clinical efficacy of the resulting dosage regimen.

MATERIALS AND METHODS

Animals

Broilers

Thirty-day-old healthy KeBao broilers obtained from a commercial poultry farm in Jiang Xia were utilized for this experiment ($n = 160$), the broilers were mixed sex (50:50) with weights ranging between 0.9 and 1.2 kg. The broilers were randomly distributed into two treatment groups ($n = 80$ /treatment group) Group 1 served as the non-infected healthy controls animals and Group 2 the *E. coli*-infected disease animals. All broilers were allowed 7 days for acclimation before the experiments began. All broilers were housed in a climate control environment under identical conditions with standard commercial diet and water supplied.

Mice

Four-week-old healthy Kunming mice (SPF grand, kw: 18 ± 2 g, $n = 120$, half male and half female) were obtained from the Center of Experimental Animal of Hubei, and housed in SPF animal room in our lab [Licence# SCXK(E) 2008-0005].

All experimental procedures in this study were performed according to the guidelines of the committee on the use and care of the laboratory animals in Hubei province, China. The study was approved by the Animal Care Center, Hubei Science and Technology Agency in China (SYXK 2013–0044). All the animals were monitored throughout the study for any signs of adverse effects.

Chemicals and Reagents

The Enrofloxacin reference standard (98% purity) and Ciprofloxacin Hydrochloride reference standard (95% purity) were purchased from Dr. Ehrenstorfer (Augsburg, Germany). The Enrofloxacin API (98% purity) used for PKs study was acquired from a local distributor (Wuhan Midland Chemical Co., Ltd.), the supplied powder was dissolved in 5% sodium carboxymethyl cellulose (CMC) to allow for oral administration. Acetonitrile (ACN), formic acid and methanol (MeOH) were provided by TEDIA (USA). All chemicals used in this experiment were analytical grade or higher and dissolved or diluted using de-ionized water (Milli-Q Millipore Corp.).

Bacteria

The clinical *E. coli* pathogenic strain designated Anhui112 was previously isolated from broiler chickens with colibacillosis. This strain was used for the PD study and the *E. coli* infection model. The commonly used quality control standard *E. coli* strain ATCC 25922 was purchased from Chinese Veterinary Culture Collection. All strains were stored at -80°C until use. Before each experiment, these bacteria cultures were sub-cultured on Mueller–Hinton agar and incubated at 37°C for 18–24 h.

Determining the MIC of Enrofloxacin Against Clinical *E. coli* Isolates

A total of 929 clinical isolates collected from five provinces in central China and stored in the laboratory were studied in this experiment. The determination of MIC for enrofloxacin and

ciprofloxacin against all clinical *E. coli* strains was determined by the microdilution broth method, using the *E. coli* ATCC 25922 as the experimental control strain and following CLSI (Clinical and Laboratory Standards Institute, 2009, M07-A9) protocol. MICs were found to be in the range between 0.04 and 64 µg/mL. Using SPSS 16.0, the 50% minimum inhibitory concentration (MIC₅₀) 0.50 µg/mL and 90% minimum inhibitory concentration (MIC₉₀) 16.21 µg/mL were determined to represent the population PD of enrofloxacin against clinical *E. coli*.

Serotype Identification

The clinical *E. coli* strains, approximately 101 strains, with the MIC closest to MIC₅₀, were further tested for determining which strains were serotype O or K positive. The O and K anti-serum was purchased from China Institute of Veterinary Drug Control (IVDC). Serotype was determined by traditional slide agglutination test using the commercialized antigen diagnostic serum following previously published methods (27).

Pathogenicity Experiment on Mice

The strains previously identified as either serotype O or K ($n = 13$) were used in a pathogenicity experiment on mice. Each of the 13 strains were administered intra-peritoneally (200 µl) to a separate group of mice ($n = 9$ /group) at three different doses [1×10^8 , 1×10^7 , and 1×10^6 colony forming units (CFU)/mL, $n = 3$ /dose] to establish the infection model; additionally there was a none treated control group for a total of 14 groups. All mice were closely observed for the first 6 h and then once every 2 h for the remainder of the day. Any behavioral changes observed were noted and recorded by time and group. At the conclusion of this experiment, the data were analyzed and the most virulent strain was selected to conduct PD study and establish the *E. coli* infection model.

Establishing *E. coli* Infection Model in Broilers

After a 7-day acclimation period, 160 broilers were randomly selected and distributed into one of two experimental groups ($n = 80$ /group). Each of the 80 broilers in the infection group was inoculated by oral gavage with 8 mL of *E. coli* culture (previously determined to be the most virulent) containing 1.2×10^9 CFU/mL. Birds were observed after inoculation for clinical symptoms and pathological changes. After 12 h, sterile tissue (liver) samples were collected by necropsy from dead broilers and cultured to confirm that mortality was caused by the inoculated strain.

Pharmacokinetic Experiment

After a 7-day acclimation period, 160 broilers were randomly divided into two groups ($n = 80$ /group): the *E. coli* infection model and healthy control model. On the morning of the eighth day, enrofloxacin was orally administered at a dose of 10 mg/kg to all broilers. At the following time points after oral administration of enrofloxacin: 0, 0.25, 0.5, 0.75, 1, 1.5, 2, 3, 4, 8, 12, 24, and 48 h, six broilers per group were humanely killed to collect blood samples (2 mL) and intestinal contents (2 mL).

Blood samples collected with anticoagulant were centrifuged for 10 min at 3000 rpms to obtain plasma. The plasma was removed to a clean sterile tube and stored at -20°C until analysis. At a later time point, 1 mL of plasma was added to a 10 mL tube, 2 mL of ACN was then added to precipitate proteins. The tube was vortexed for 2 min and centrifuged at 4000 rpms for 10 min, the aqueous phase was transferred to a clean tube and dried under nitrogen. One milliliter of 14% ACN was used to reconstitute the dried pellet. The sample was filtered through a 0.22 µm membrane into the high-performance liquid chromatography (HPLC) detection vial.

Intestinal content (1 g) was homogenized for 1 min in a 50 mL tube, 2 mL of 0.5 M EDTA (pH 7.0) was then added to the homogenate followed by 15 mL of dichloromethane. The mixture was vortex-mixed for 1 min and centrifuged at 5000 rpms for 5 min. This extraction procedure was repeated twice and then dried under nitrogen. The dried pellet was reconstituted using 1 mL 12% ACN then centrifuged at 12,000 rpm for 5 min before analysis. The supernatant was removed and filtered through a 0.22 µm membrane, into the HPLC detection vial.

The concentration of enrofloxacin and ciprofloxacin in plasma and intestinal content were determined by the HPLC method with UV (UltraViolet) detector (28) under the following conditions: UV detection 278 nm, column temperature 30°C , mobile phase water with 0.1% formic acid and ACN, and sample size 40 µL injected into the HPLC (Waters 2695) system with a flow rate 1 mL/min.

The concentration–time data variables and Pharmacokinetics parameters of enrofloxacin and ciprofloxacin were derived from the Winnonlin program (version 5.2.1, Pharsight Corporation, Mountain View, CA, USA). The plasma concentration determined data were analyzed with compartmental method. The linear trapezoidal rule was used to calculate the AUC.

Determination of MIC, MBC, MPC, and PAE

The MIC of Anhui112 was determined using the previous detailed method.

The minimal bactericidal concentration (MBC) was determined after MIC reading, 100 µL bacteria suspension from each well of the 96 microwell plate was spread on MH agar plates and incubated at 37°C for 24 h for bacterial counting. MBC in broth and intestine were determined as the lowest concentration at which bacteria numbers were reduced by 99.9%.

The mutant prevention concentration (MPC) of enrofloxacin was determined using the agar method (29). The 10^{10} CFU/mL *E. coli* strains were inoculated on the agar plates containing serial concentration of enrofloxacin ($1 \times \text{MIC}$, $2 \times \text{MIC}$, $4 \times \text{MIC}$, $8 \times \text{MIC}$, $16 \times \text{MIC}$, and $32 \times \text{MIC}$) and cultured at 37°C for 72 h. The MPC was defined as the lowest concentration of enrofloxacin on agar plates without bacterial growth.

For the post-antibiotic effect (PAE) determination, the bacterial was exposed to three different concentrations ($1 \times \text{MIC}$, $2 \times \text{MIC}$ and $4 \times \text{MIC}$) of enrofloxacin for 1 or 2 h. The media containing enrofloxacin was removed by centrifuge at $12000 \times g$ for 5 min. The bacterial was re-grew in fresh media without enrofloxacin for

another 24 h. The bacterial numbers were determined at different time points. The PAE was the time difference (in hours) for antimicrobial-treated bacterial to increase in number by 1 log₁₀ minus the same determination for non-treated cultures of the same test bacterial.

Drawing *In vitro* and *Ex Vivo* Bacterial Killing Curves

In vitro bacterial killing curves were determined in MH broth. Different concentrations of enrofloxacin: 1/2MIC, 1MIC, 2MIC, 4MIC, 8MIC, 16MIC, and 32MIC were prepared in MH broth, the tubes were then inoculated with *E. coli* Anhui112 (10⁶CFU/mL) and incubated at 37°C. The bacterial count (CFU/mL) was determined for each tube after 1, 2, 4, 6, 8, 12, and 24 h of incubation. Briefly, 100 μL culture was obtained for each time point, serially diluted with sterile saline plated and the colonies counted the next morning. The limit of detection was 10 CFU/mL. Each concentration test was performed in triplicate.

The *Ex vivo* bacterial killing curves were determined in intestinal content samples obtained from broilers at different time points after oral administration with enrofloxacin following the method as described earlier for the *in vitro* study. The tubes containing bacterial culture and intestinal content were incubated at 37°C and then viable bacteria counts were determined at 1, 2, 4, 8, 12, and 24 h time points. The limit of detection was 10 CFU/mL. Each concentration test was performed in triplicate.

PK and PD Integration and Modeling

All PK parameters were calculated by WinNonlin 5.2 software, including T > MIC, C_{max}, T_{1/2}, AUC, etc. PK analysis was performed with one-compartmental model. Using *in vitro* MIC and *in vivo* PK parameters, the surrogate parameters (C_{max}/MIC, AUC/MIC, and T > MIC) of intestinal content were determined after oral administration of enrofloxacin. The relationship between the *ex vivo* AUC_{24h}/MIC ratio and the bacterial count after 24 h of incubation in intestinal content was determined by using the sigmoid inhibitory E_{max} model. This model is described by the following equation:

$$E = E_{\max} - \frac{(E_{\max} - E_0) \cdot C^N}{C^N + EC_{50}^N}$$

In which, *E* is the antibacterial effect measured as the change in the bacterial count (log₁₀CFU/mL) in the serum sample after 24 h of incubation compared to the initial log₁₀CFU/mL; *E*_{max} is the maximum antibacterial effect determined as the difference of log₁₀CFU/mL in sample incubated between 0 and 24 h time point; *E*₀ is the log₁₀ difference of bacterial count in the control sample containing tylosin after 24 h of incubation; EC₅₀ is the AUC/MIC producing 50% of the maximum antibacterial effect; *C* is the AUC/MIC in the effect compartment (the *ex vivo* site, that is serum); and *N* is the Hill coefficient, which describes the steepness of the AUC/MIC-effect curve.

To investigate the effect of different dosage regimens, the PD model describing bacterial growth rate in function of enrofloxacin concentration was combined with the PK model and simulations were performed with mlxplora software (version-1.1.0, Lixoft, Orsay, France).

Dosage Regimen

Four levels of antibacterial effect of enrofloxacin were quantified from the sigmoid E_{max} equation by determining AUC/MIC required for bacteriostatic action (no change in bacterial count after 24 h of incubation, *E* = 0), a 50% reduction of the bacterial count, bactericidal action (a 99.9% decrease in the bacterial count, *E* = 3), and bacterial elimination (the lowest AUC/MIC that produce a 99.99% reduction in the count, *E* = 4) in each intestinal content. The calculation of potential optimal dosage can use the following equation:

$$X = d \times \frac{AUC_{\text{ex vivo}} / MIC_{\text{tested}}}{AUC_{\text{in vivo}} / MIC_{\text{target}}}$$

where *d* is the projected dosage (mg/kg), 10 mg/kg was used in this study. The value of the *ex vivo* AUC_{24h}/MIC obtained from intestinal content represents bacteriostatic activity, bactericidal activity, and elimination of organisms, respectively. The *in vivo* AUC is obtained from the PK using MIC₅₀ as the target MIC in this study.

Risk Assessment of *E. coli* Resistance

The concentration of enrofloxacin was adjusted to 0, 0.125, 0.25, 0.5, 1, 2, 4, and 8 μg/mL with MH broth and 10⁹ CFU/mL of bacteria were added to each tube; after 2, 4, 6, 8, 12, 18, 24, 36, and 48 h of incubation 100 μL was removed from each tube and plated on MH agar plates which contained 1 μg/mL enrofloxacin. Any plate containing 100 CFUs or less were not considered to be a drug induced mutation.

Model Validation of the Dosage Regimen

In order to verify the clinical efficacy of the resulting suggested dosage regimen, 24 broilers with artificially induced colibacillosis were divided into two groups randomly (*n* = 12/group), and administered saline or antibiotic at a previously determined dosage regimen. Clinical symptoms and pathological changes were observed and recorded for 48 h.

Ethical Statement

All the experimental procedures in this study were performed according to the guidelines of the laboratory care and use committee in Hubei province, China. The study was approved by Animal Ethics Committee of Huazhong Agricultural University and the Animal Care Center, Hubei Science and Technology Agency in China (SYXK 2013-0044). All the animals were monitored throughout the study for any adverse effect signs. This experiment is in line with national regulations regarding animal welfare ethics. Ethical approval number is hzauch 2014-002.

RESULTS

MIC Distribution of the Clinical *E. coli* Strains

The MIC distribution of the 929 *E. coli* strains to enrofloxacin and ciprofloxacin is shown in **Figure 1**. The MIC for enrofloxacin and ciprofloxacin exhibited a trimodal distribution, indicating that

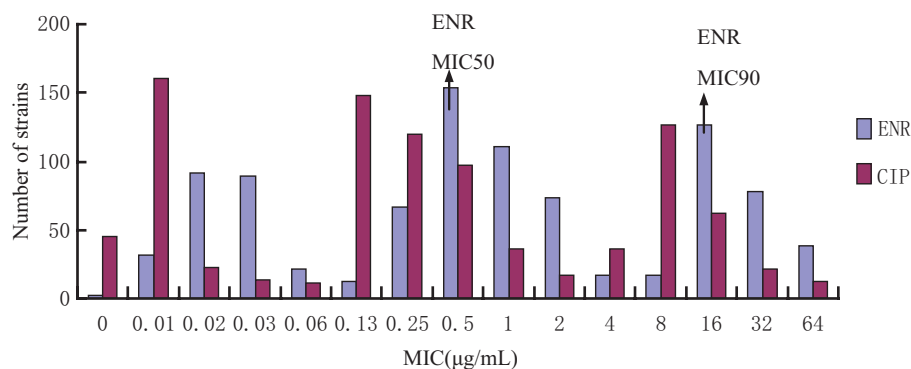


FIGURE 1 | Enrofloxacin and ciprofloxacin MIC distribution of 929 *Escherichia coli* strains isolated from broiler farms. The X-axis was the MIC values and Y-axis was the strain number in each MIC value.

TABLE 1 | MIC and serotype distribution of clinical isolates (microgram per milliliter).

Bacteria	MIC	O	K	Death/total ^a		
				1 × 10 ⁸ CFU ^b	1 × 10 ⁷ CFU ^b	1 × 10 ⁶ CFU ^b
Zhengzhou379	0.25	O75	987P	1/3	0/3	0/3
Zhengzhou384	0.125	O40	K99	1/3	0/3	0/3
Zhengzhou389	0.125	O9	K88	0/3	0/3	0/3
Zhengyang113	0.125	O18	K99	0/3	0/3	0/3
Jingzhou9	0.25	O93	K88	3/3	2/3	1/3
Jingzhou77	0.06	O138	K88	2/3	0/3	0/3
Xinzhou18	0.25	O139	K99	2/3	1/3	0/3
Xinzhou52	0.25	O101	K88	2/3	1/3	1/3
Xinzhou54	0.25	O80	K99	1/3	0/3	0/3
Xinzhou100	0.25	O40	K99	1/3	0/3	0/3
Anhui112	0.25	O2	K88	3/3	3/3	2/3
Zhengzhou16	0.25	O18	K88	1/3	0/3	0/3
Zhengyang18	0.25	O20	K88	0/3	0/3	0/3
Control group				0/3	0/3	0/3

^aRepresents the death number of mice and the ratio of the total.

^bNumber of colonies to each mice by intraperitoneal injection.

there may be some resistant strains. The MIC₅₀ and MIC₉₀ for enrofloxacin were 0.05 and 16 µg/mL, respectively.

Serotype and Pathogenicity of the Selected *E. coli* Strains

Approximately, 101 *E. coli* strains; which were closest to MIC₅₀ (0.05 µg/mL) were selected for further analysis by serotyping specifically selecting for serotypes O and K. Only 13 *E. coli* isolates were identified as O or K serotype. And these 13 *E. coli* isolates were used for a pathogenicity experiment in mice. From the results (Table 1), we were able to identify the most virulent strain, Anhui 112. Therefore, *E. coli* Anhui 112 was selected to conduct the PD study and to establish the infection model.

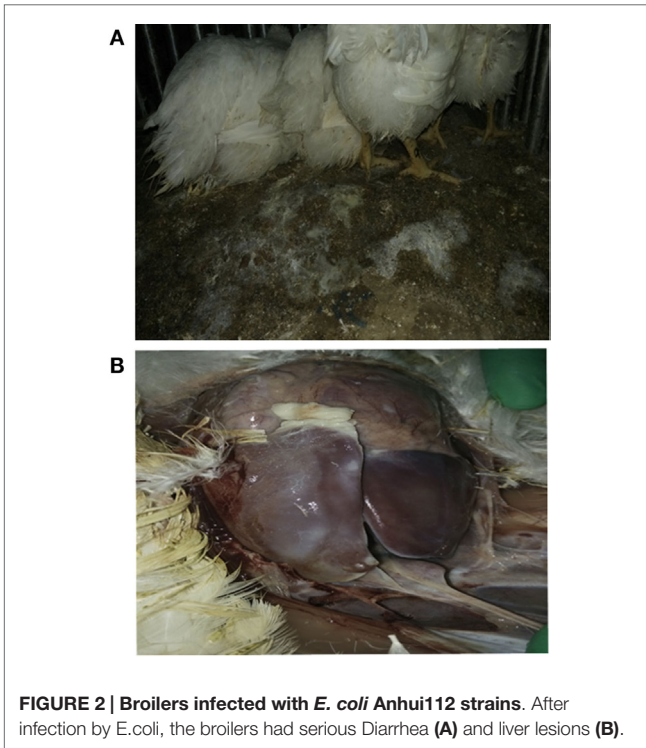
E. coli Infection Model

Using *E. coli* Anhui 112, we were able to successfully reproduce an *E. coli* infection model in commercial broiler chickens, within

12 h after challenge with Anhui 112, broilers exhibited typical clinical signs of colibacillosis, such as the elevated temperature, loss of appetite, and white loose droppings. Lesions examined by necropsy showed a layer of white cellulose pseudo-membranous covering the surface of the liver and heart consistent with classical colibacillosis, clearly seen in Figure 2.

Pharmacokinetics of Enrofloxacin

The intestinal content concentrations of enrofloxacin and ciprofloxacin were determined after oral administration of the antibiotics to the healthy and infected broilers (Figure 3). After oral administration, plasma and intestinal content concentration of enrofloxacin was best fitted with a one-compartment model, all PK parameters were calculated by WinNonlin 5.2. The PK parameters of enrofloxacin in intestinal content are illustrated in Table 2. In the healthy model, the AUC, C_{max}, and T_{max} were 228.97 µg mL⁻¹ h, 21.69 µg mL⁻¹, and 1.23 h, respectively. In the



infected model the AUC, C_{max} , and T_{max} were $444.86 \mu\text{g mL}^{-1} \text{ h}$, $31.69 \mu\text{g mL}^{-1}$, and 1.13 h, respectively.

MIC, MBC, MPC, and PAE of Enr and Cip Against Anhui 112

The MIC and MBC of enrofloxacin in MH broth and intestinal contents were similar 0.25 and $0.5 \mu\text{g/mL}$, respectively. The MPC value of enrofloxacin and ciprofloxacin against Anhui 112 were 7 and $0.625 \mu\text{g/mL}$, respectively. The PAE showed strong concentration-dependent tendencies. These results are presented in Table 3.

In vitro and Ex Vivo Antimicrobial Activity

According to the MIC values, a series of varying concentrations of enrofloxacin and ciprofloxacin were prepared in MH broth ($1/2$ – 32 MIC) to ascertain the *in vitro* bactericidal curve against Anhui 112 (Figure 4). The curves are characteristically typical for concentration-dependent antibiotic activity. When exposed to the higher concentration ($\geq 1 \times \text{MIC}$) of enrofloxacin or ciprofloxacin for 6 h, the bacterial CFUs were significantly decreased to undetectable level (<30 CFU). When the bacterial was exposed to $1 \times \text{MIC}$ of the two drugs, the growth of bacterial was inhibited at the first 8 h but was rebounded during 8–24 h.

The results showed that in an *ex vivo* environment enrofloxacin is typically concentration dependent (Figure 5), consistent with

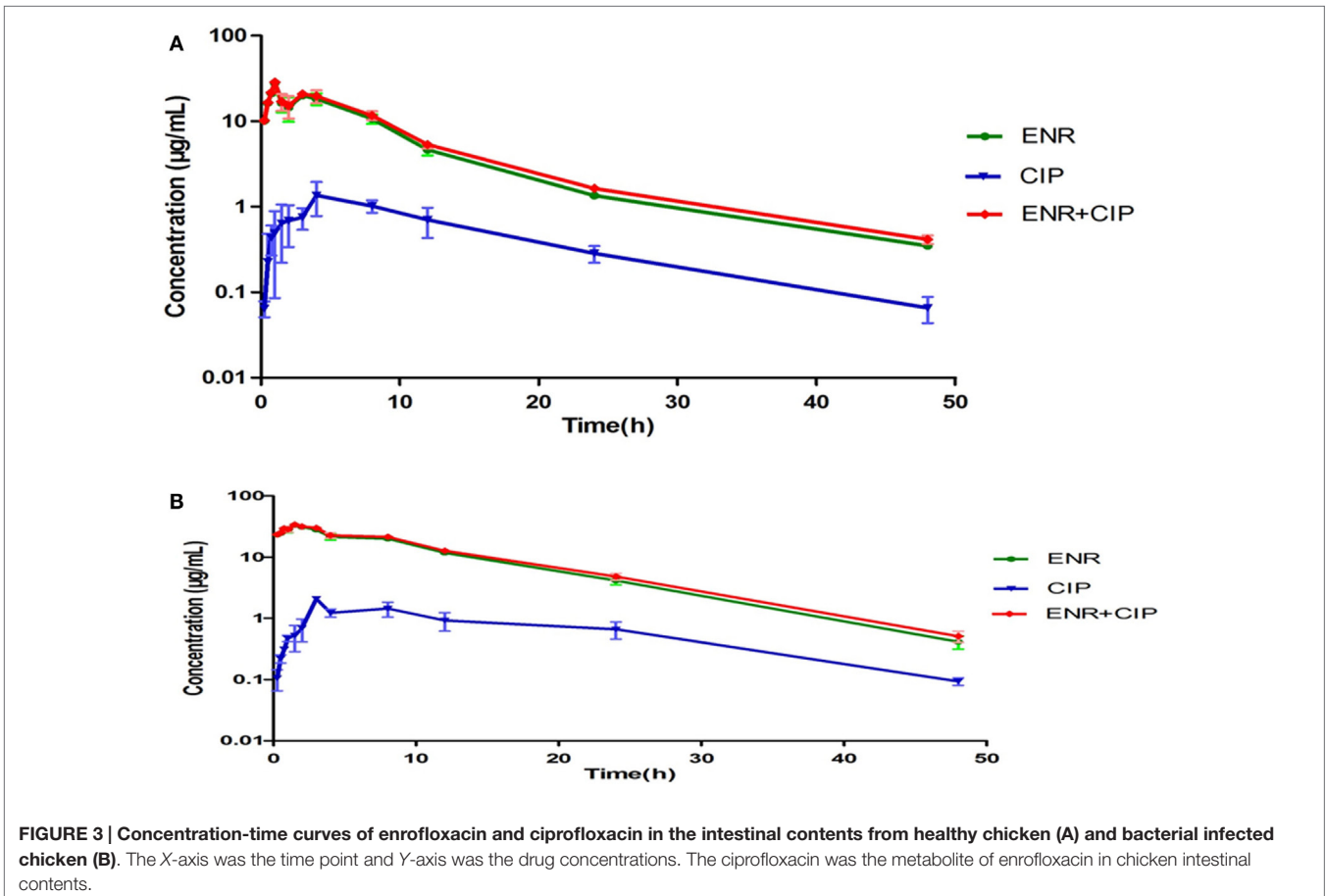


TABLE 2 | Pharmacokinetic parameters of enrofloxacin and ciprofloxacin in intestinal contents after oral administration of enrofloxacin at 10 mg/kg BW to broilers.

PK parameters (units)	Healthy model			Infected model		
	ENR	CIP	ENR + CIP	ENR	CIP	ENR + CIP
AUC (μg h/mL)	206.30	18.63	228.97	406.74	31.39	444.86
T_{max} (h)	1.18	5.50	1.23	1.06	6.09	1.13
C_{max} (μg mL ⁻¹)	21.07	1.11	21.69	30.88	1.46	31.69
V/F (mL/kg)	413.02	4967.17	403.45	296.59	4392.84	289.02
Cl/F (mL/h/kg)	48.47	536.84	43.67	24.58	318.52	22.48
K_a (h ⁻¹)	2.79	0.28	2.72	3.66	0.31	3.43
K_e (h ⁻¹)	0.12	0.11	0.11	0.08	0.07	0.08
$T_{1/2e}$ (h)	5.91	6.41	6.40	8.36	9.56	8.91
T > MIC	39.29	30.08	42.79	49.89	43.59	49.95

TABLE 3 | Antibacterial activity of enrofloxacin and ciprofloxacin against *E. coli* in vitro.

Drug	MIC (μg/mL) Broths and intestinal	MBC (μg/mL) Broths and intestinal	MPC (μg/mL) Broths	PAE		
				Concentration (μg/mL)	Expose (1 h)	Expose (2 h)
ENR	0.25	0.5	7	MIC (0.25)	0.2 h	0.4 h
				2 MIC (0.5)	0.8 h	1.2 h
				4 MIC (1)	1.4 h	1.6 h
CIP	0.125	0.25	0.625	MIC (0.125)	0.2 h	0.4 h
				2 MIC (0.25)	0.8 h	1.4 h
				4 MIC (0.5)	1.5 h	1.6 h

the *in vitro* antibacterial curve. In the high concentration group, the enumerated CFUs changed significantly. After 4-h and 8-h cultures, there were no detectable bacteria in infected broilers.

PK/PD Integration and Analysis

The integration of *in vivo* PK and *in vitro* PD data of enrofloxacin in intestinal contents showed AUC/MIC₅₀ ratios for healthy and infected broilers to be 455.20 and 884.41 h, respectively. The C_{max} /MIC ratios were 43.38 and 63.38, respectively. Sigmoid E_{max} model was utilized to simulate the relationships between C_{max} /MIC, AUC/MIC, and *ex vivo* antimicrobial efficacy.

Dosage Determination

According to the dosage equation $X = d \times \frac{AUC_{ex\ vivo} / MIC_{tested}}{AUC_{in\ vivo} / MIC_{target}}$, the

optimal dose X (mg/kg/d) was calculated. The d was the projected dosage (10 mg/kg) in this study. The $AUC_{in\ vivo}/MIC_{target}$ (0.5 μg/mL, the MIC₅₀ of enrofloxacin against clinical strains) for infected broilers were 455.20 and 884.41 h, respectively. See **Table 4** of *ex vivo* parameters, when $E = 0$, the $AUC_{ex\ vivo}/MIC_{test}$ (0.25 μg/mL, MIC of enrofloxacin to *E. coli* Anhui12) for healthy and infected broiler were 258.73 and 624.94 h, respectively. When $E = -3$, the $AUC_{ex\ vivo}/MIC_{test}$ for healthy and infected broiler were 451.35 and 1065.93 h, respectively. When $E = -4$, the $AUC_{ex\ vivo}/MIC_{test}$ for healthy and infected broiler were 567.39 and 1343.81 h, respectively. Therefore, see **Table 5**, the doses calculated for bacteriostatic action ($E = 0$) in healthy and infected broilers were 5.6 and 7 mg/kg BW. The doses calculated for bactericidal action

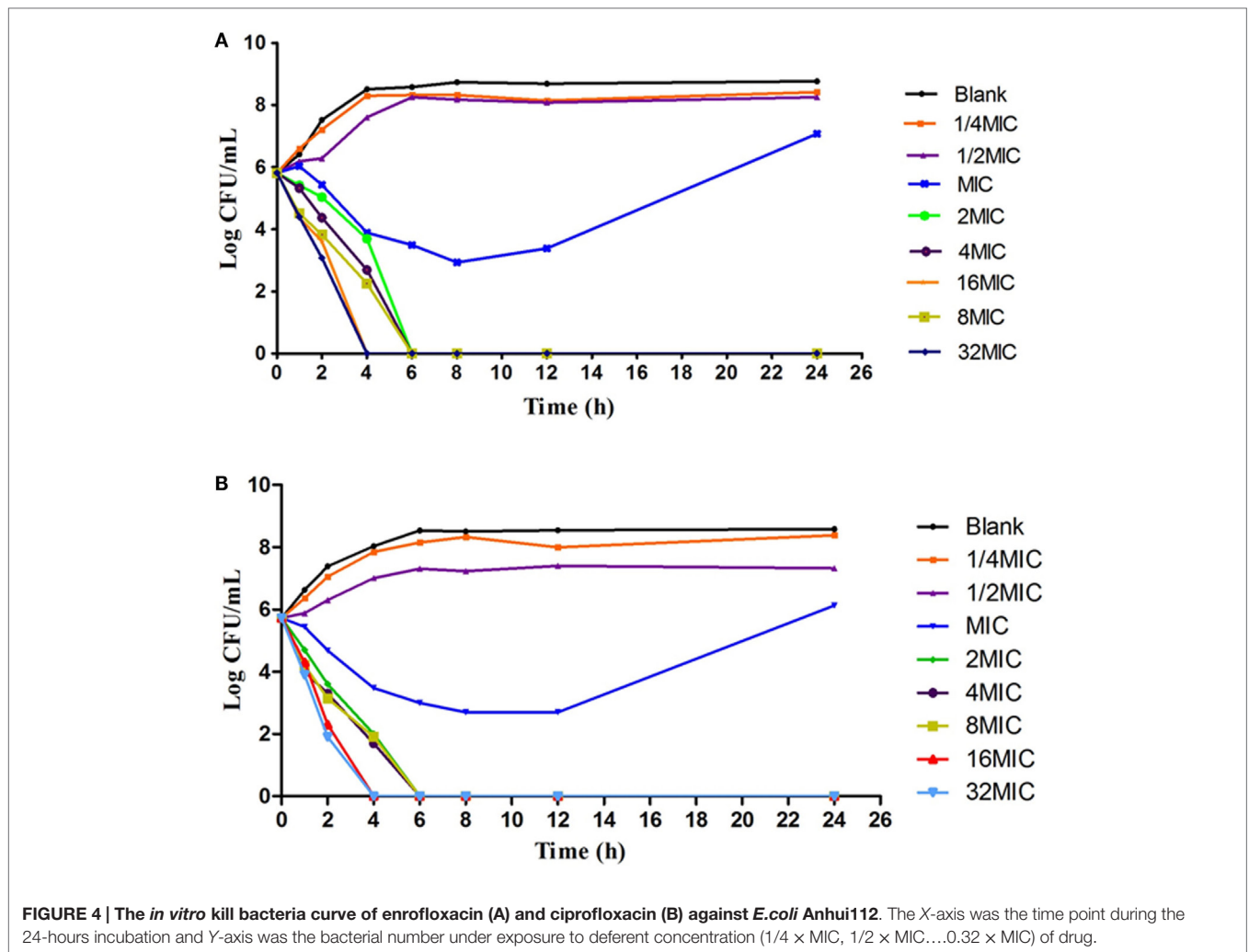
($E = -3$) in healthy and infected broilers were 9.8 and 11.9 mg/kg BW. The calculated for bacterial eradication ($E = -4$) in healthy and infected broilers were 12.4 and 15.1 mg/kg BW. Ultimately, for treatment *E. coli* infection in broiler, the preventive, therapeutic, and bacterial eradication dose of enrofloxacin were chosen as 7.0, 11.9, and 15.1 mg/kg BW.

Due to intensive broiler rearing practices, a mixed feeding dosage regimen was also calculated in our study. According to the groups feeding dosing formula $D = d \times n/W$, for 21-day-old broilers, the value of W is approximately 120 g/kg/d, n is the daily dosing frequency and D is group mixed feeding dosage. When the MIC₅₀ against clinical strains is 0.5 μg/mL, the optimum dose is 99 mg/kg for mixed feeding.

Using the PK/PD model with the PD parameters derived from *ex vivo* antimicrobial activity, three selected doses (7.0, 11.9, 15.1 mg/kg BW) were separately simulated. As shown in **Figure 6**, after single dose treatment for 24 h, higher dose (11.9 and 15.1 mg/kg BW) played bactericidal or eradication action during 0–18 h, but the bacteria rebound phenomenon was occurred under the lower dose (7 mg/kg BW) treatment. As shown in **Figure 7**, after daily-treatment of the three selected doses (7.0, 11.9, 15.1 mg/kg BW) for 3 days, the higher doses (11.9, 15.1 mg/kg BW) exhibited great bactericidal and eradication action; however, the bacterial was not inhibited under lower 3-day treatment of lower dose (7 mg/kg BW).

Assessment of Bacterial Resistance

Results in **Table 6** show that when the drug concentration is higher than 8 μg/mL, drug-resistant strains do not appear;



however, when the drug concentration is 2–4 µg/mL, drug resistance strains appear after 36 h. Resistance strains are most easily achieved when the drug concentrations are between 0.25 and 1 µg/mL after 24 h. Similar results were observed between the blank samples (without drug) and the samples whose concentration is 0.125 µg/mL or less. The data indicate resistant strains generally appear after 24 h; therefore, the dosing interval was chosen to be 24 h.

Model Validation

Results show that the protection rate of control group was 8.3%, while the protection rate of the experiment group was 83.3%. These data indicate that the dosage regimen chosen has a significant therapeutic effect, suitable for clinical treatment (Table 7).

DISCUSSION

In this investigation, enrofloxacin was orally administered at a clinical recommended effective dose (10 mg/kg BW) in healthy and infected broilers. Although the PK of enrofloxacin in the serum of goats, pigs, calves, horses, and sheep after

administration has already been investigated many times (16–19, 30), reports concerning the PK in the intestinal contents are quite few. In this study, enrofloxacin concentrations in intestinal contents were calculated to be 0.35–28.05 µg/mL. These concentrations were much higher than the concentration of enrofloxacin in plasma of healthy broilers, which were between 0.04 and 2.01 µg/mL. According to Slana et al. (24) enrofloxacin concentrations in manure samples, after 15 mg/kg BW orally administered, ranged between 39.2 and 55.0 µg/g. Moraru et al. (31) detected enrofloxacin concentrations in excreta samples ranged between 40.5 and 50.7 µg/g after 3 days orally treatment with 10 mg enrofloxacin/kg BW. Devreese et al. (26) found enrofloxacin concentrations in cloacal samples ranged between 20.1 and 55.7 µg/g after orally treatment of 10 mg enrofloxacin/kg BW. In this study, we found the enrofloxacin concentrations in the intestinal contents were significantly less than previously reported concentrations that maybe due to sample and dosage differences.

The PKs of enrofloxacin in the infected and healthy models were quite different. Higher AUC was obtained in infected broilers (406.7 µg h/mL) when compared to healthy (206.3 µg h/

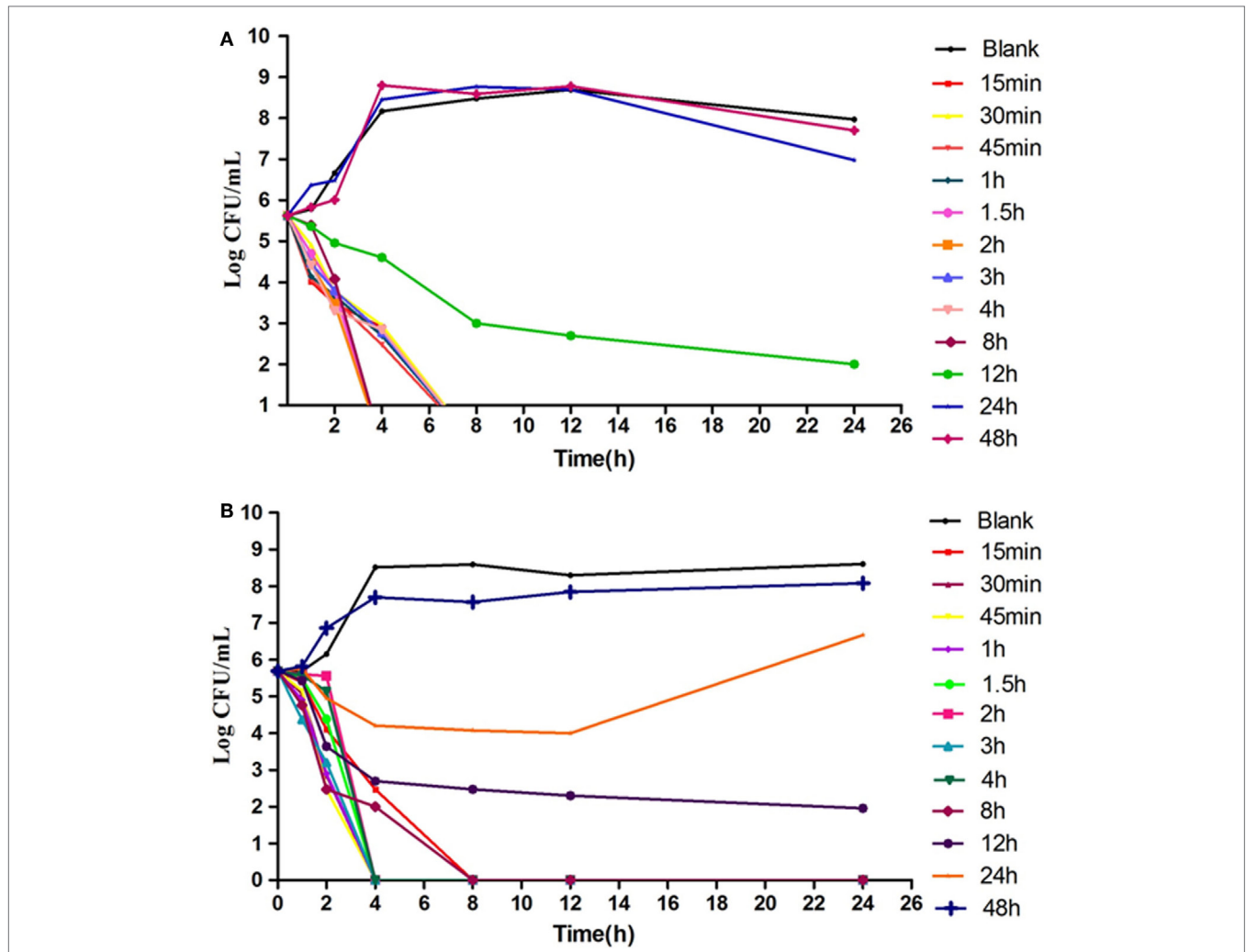


FIGURE 5 | The *Ex vivo* inhibition curve in the intestinal content from healthy chicken (A) and infected chicken (B). The X-axis was the time point during the 24-hours incubation and Y-axis was the bacterial number under exposure to intestinal samples collected from different time point in the PK study.

TABLE 4 | PK/PD parameter of *ex vivo* data after oral administration enrofloxacin in chicken.

Parameter	Unit	Healthy	Infected
E_{max}	Log10CFU/mL	2.35	2.91
E_0	Log10CFU/mL	-5.62	-5.69
$E_{max}-E_0$	Log10CFU/mL	7.97	8.60
EC_{50}	h	348.51	802.26
Slope (N)	-	2.85	2.72
AUC_{24}/MIC for bacteriostatic action ($E = 0$)	h	258.73	624.94
AUC_{24}/MIC for bactericidal action ($E = -3$)	h	451.35	1065.93
AUC_{24}/MIC for bacterial eradication ($E = -4$)	h	567.39	1343.81

TABLE 5 | The different dosages (milligram per kilogram) when MIC of enrofloxacin is 0.5 µg/mL.

Effect (E)	Healthy dosage	Infected dosage
Bacteriostatic action ($E = 0$)	5.6	7.0
Bactericidal action ($E = -3$)	9.8	11.9
Bacterial eradication ($E = -4$)	12.4	15.1

mL) broilers. The differences of the PKs in healthy and infected broilers maybe due to the changes of the physiological and biochemical indexes, such as the change in their body temperature,

the decrease of the protein in plasma, decline of blood pressure, anemia, liver dysfunction by acetylation, and so on. The PK parameter in diseased animals is much similar to clinical conditions. As previous research has shown, the metabolic conversion of enrofloxacin to ciprofloxacin is quite different in different animal species for example: 59% in dairy cows, 36% in sheep, 47% in buffalo calves, and 64% in beef steers (32–34).

In this study, the ratio of ciprofloxacin AUC (31.39) and enrofloxacin AUC (406.74) is 7.71% after oral administration in infected broilers. Differing from other animal species, the

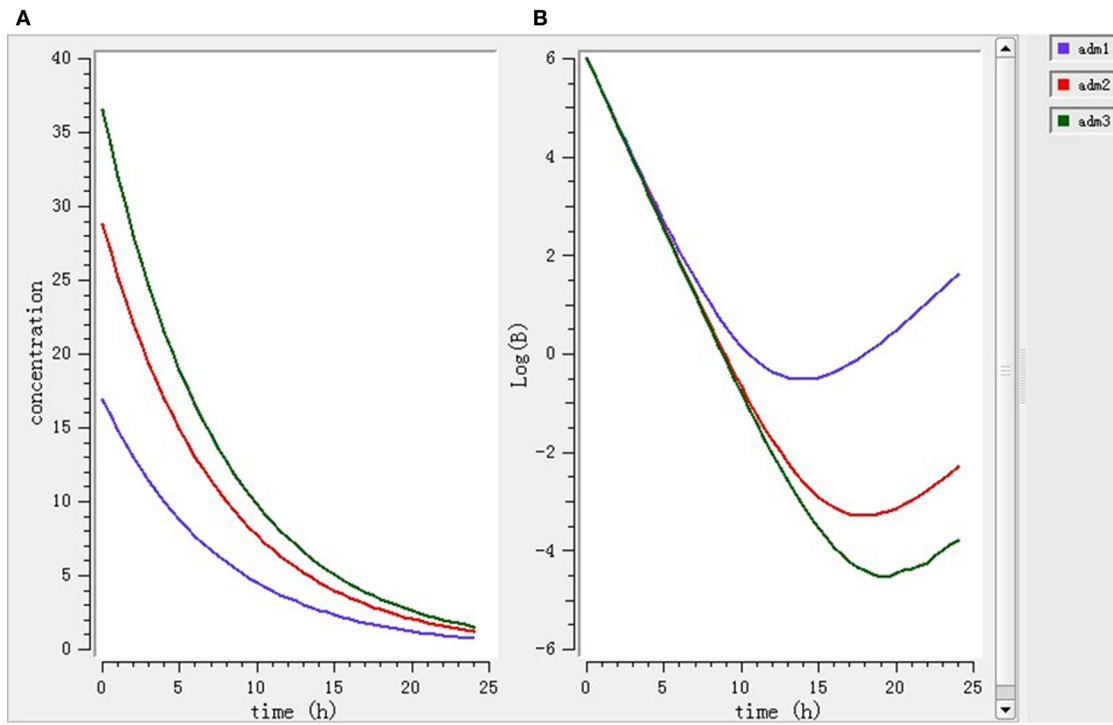


FIGURE 6 | The pharmacokinetic change (A) and pharmacodynamic change (B) under 1-day single treatment simulated by *mlxplere* software. Adm1, 2, and 3 represented 1-day single treatment with 7.0, 11.9, and 15.1 mg/kg enrofloxacin, respectively.

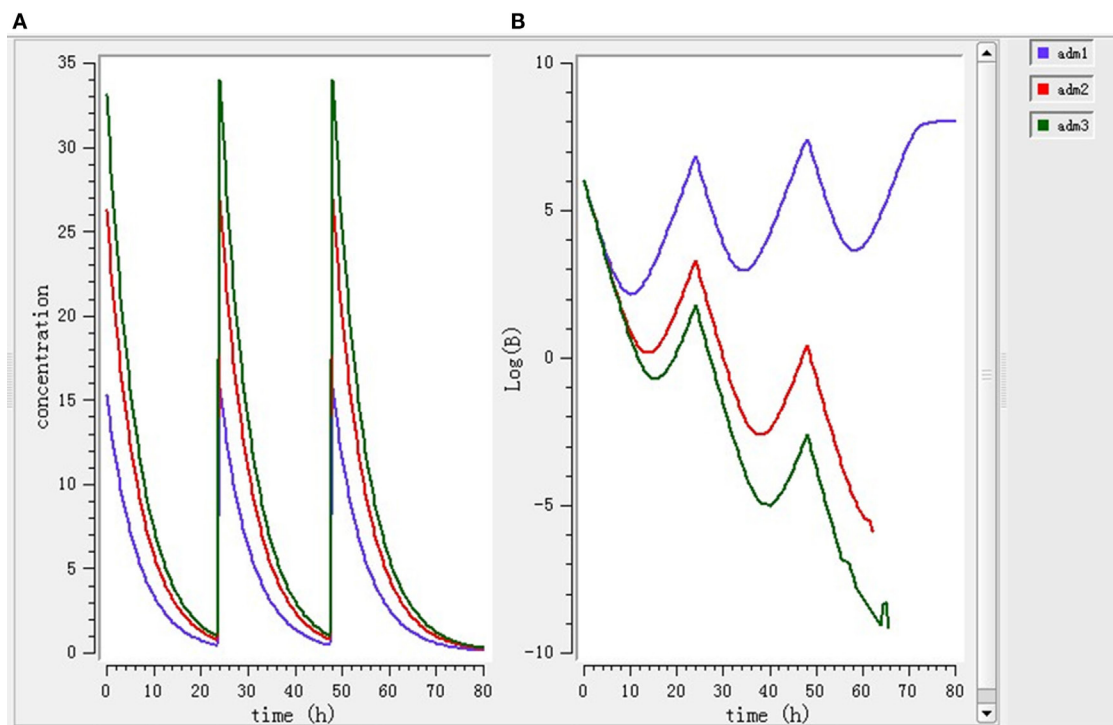


FIGURE 7 | The pharmacokinetic change (A) and pharmacodynamic change (B) under 3-day treatment simulated by *mlxplere* software. Adm1, 2, and 3 represented 3-day daily-treatment with 7, 11.9, and 15.1 mg/kg enrofloxacin, respectively.

TABLE 6 | The growth of resistant strains after exposed to different drug concentrations.

Time (h)	B	0.125	0.25	0.5	1	2	4	8
2	N	N	N	N	N	N	N	N
4	N	N	N	N	N	N	N	N
6	N	N	N	N	N	N	N	N
8	+	N	+	N	N	N	N	N
12	+	+	N	N	+	N	N	N
18	+	N	+	N	+	+	N	N
24	++	++	+	++	N	+	N	N
36	++	++	++	+	N	++	++	N
48	++	++	++	++	+	++	++	N

B, the blank group.

N, colony number below 10 CFU/mL.

+, colony number between 10 and 100 CFU/mL.

++, colony number beyond 100 CFU/mL.

TABLE 7 | The therapeutic effect of enrofloxacin against colibacillosis.

Group	Bacterial	Concentration	Sum chickens	Dead chickens	Protection rate
Test	8 mL, 10 ⁹ CFU/mL	11.9 mg/kg BW	12	2	83.3%
Control	8 mL, 10 ⁹ CFU/mL	No treatment	12	11	8.3%

biotransformation of enrofloxacin to ciprofloxacin in poultry is limited to only 5–10%, and the ciprofloxacin concentrations are always below the LOQ. (23, 35, 36). The metabolite ciprofloxacin usually has antimicrobial activity, so it is quite important to evaluate the combined action of the enrofloxacin and ciprofloxacin (37). As such, the sum of the concentrations of two drugs should be evaluated by the PK/PD integration and modeling.

The MIC results suggest a bimodal distribution and the 349 strains with MIC ranging between 1 and 64 µg/mL indicates the high increase of antibiotic resistance. Compared to other studies on APEC and AFEC strains (38), 28.5% strains with MIC between 0.5 and 1 µg/mL were considered intermediately resistant, confirming the trend of increasing resistance. In recent years, it has been suggested that the optimization of dosing regimen not only for the treatment but also for reducing antimicrobial resistance development. MIC is used as an *in vitro* reference value to predict the antimicrobial efficacy and potency of a drug. The MIC values in broth and biological fluids reported in previous research (39) shows that the serum inhibitory activity is reduced for most fluoroquinolones. In this study, the MIC values of the pathogen *E. coli* (Auihui 112) for enrofloxacin in intestinal contents and broth both are 0.25 µg/mL, which indicates that enrofloxacin has the same antimicrobial activity in broth and intestinal contents. In our study, the *in vitro* and *ex vivo* time-kill curves indicate that enrofloxacin rapidly eliminates *E. coli*. Rapid inhibition and killing of bacteria exhibited by *ex vivo* inhibition curves is consistent with *in vitro* time-kill data and the previous studies published for danofloxacin and marbofloxacin (39, 40). The time-kill curves seem to indicate that enrofloxacin is concentration dependent. The data from the current study show that bacterial counts will increase after 24-h incubation a time when the antibiotic concentration is lower. These data confirms findings in previous publications stating that MIC alone does not offer enough information about the efficacy of therapy (21).

Enrofloxacin shows a concentration-dependent killing activity like other fluoroquinolone drugs (41). The main PK/PD parameters for concentration-dependent antimicrobials are C_{max}/MIC and AUC/MIC , the AUC/MIC ratio is a more important surrogate for the PK/PD analysis (42).

The breakpoint of $C_{max}/MIC \geq 10$ and $AUC_{24}/MIC \geq 125$ is an indicator for the success of therapy and preventing the emergence of resistance of fluoroquinolones (43). *In vivo* AUC_{24}/MIC_{50} are 455.20 and 887.41, respectively, for healthy and infected broilers at the dosage of 10 mg/kg. The values of *ex vivo* AUC/MIC obtained for bactericidal action in intestinal contents from healthy and infected broilers is 451.35 and 1065.93, respectively. The enrofloxacin concentrations in intestine are detected in much higher concentrations than in plasma; which would potentially lead to an eradication of the *E. coli* in intestine. In this study, based on the $MIC_{50} = 0.5$ µg/mL, values of C_{max}/MIC (43.12) and AUC_{24}/MIC (455.20) both values exceed the predictive effective values. These values are comparable with the values of C_{max}/MIC (38) and AUC_{24}/MIC (293) obtained from buffalo calves (44).

Pharmacokinetic/pharmacodynamic modeling serves as a bridge between PK and PD and has been considered as a promising approach (4, 8, 20). Results obtained from this study based on the PK/PD integration suggest that when the MIC_{50} of enrofloxacin is 0.5 µg/mL, for bacteriostasis, bactericidal, and bacterial eradication in infected broilers, the dosage should be 7.0, 11.9, and 15.1 mg/kg BW, respectively. Results from professional software used to simulate different dosage regimens for treatment show that a 3-day treatment of 11.9 mg/kg every 24 h should be efficient against *E. coli* (Anhui 112) in broilers. Therefore, the dose of 11.9 mg/kg BW. should be effective for treating colibacillosis when the $MIC \leq 0.5$ µg/mL.

Antimicrobial resistance is a principal threat for both animals and humans. Using PK/PD modeling choosing an appropriate therapeutic schedule is a suitable strategy to reduce antimicrobial

resistance without influencing the treatment effect. Previous studies show that both AUC/MIC and C_{max} /MIC were related to emergence of resistance in *Pseudomonas aeruginosa* (45). In recent years, the drug resistance risk steadily increases rapidly. However, when the MIC is above the MPC in a wild population, the probability that it will undergo two resistant mutations is very low. It has been proposed that the AUC₂₄/MPC ratio could help as an indicator of drug exposure that stops the selection of drug-resistant mutants (46, 47). It has been proven that an AUC/MPC ratio that in the range of 9 and 12 could prevent the selection of resistant mutants for marbofloxacin in *E. coli* when the inoculum sizes was 10⁵ and 10⁷ CFU/mL (48). In this study, the AUC/MPC of enrofloxacin in healthy and infected broilers was 29.4 and 58.1, respectively. Indicating that the dosage used

in this study potentially can prevent the selection of enrofloxacin resistant mutants.

FUNDING

This article is financially supported by Grants from National Basic Research program of China (2013CB127206), Fundamental Research Funds for the Central Universities (2662015PY035), project supported by the morning program of Wuhan in China (2015070404010191), National Natural Science Foundation of China (31101856/31302143), National Key Technology R&D Program (2012BAK01B00), and the identification of unknown risk factors and the tracking-assessment of known risk factors in livestock product (GJFP2015008).

REFERENCES

- Toutain P, Lees P. Integration and modelling of pharmacokinetic and pharmacodynamic data to optimize dosage regimens in veterinary medicine. *J Vet Pharmacol Ther* (2004) **27**:467–77. doi:10.1111/j.1365-2885.2004.00613.x
- Ambrose PG, Bhavnani SM, Rubino CM, Louie A, Gumbo T, Forrest A, et al. Pharmacokinetics-pharmacodynamics of antimicrobial therapy: it's not just for mice anymore. *Clin Infect Dis* (2007) **44**:79–86. doi:10.1086/510079
- McKellar Q. How can knowledge of Pk/Pd interactions help limit the selection of antibiotic resistance. *International Conference on Antimicrobial Agents in Veterinary Medicine (AAVM)*. Helsinki (2002). p. 28–9.
- AliAbadi FS, Lees P. Antibiotic treatment for animals: effect on bacterial population and dosage regimen optimisation. *Int J Antimicrob Agents* (2000) **14**:307–13. doi:10.1016/S0924-8579(00)00142-4
- Toutain P. Pharmacokinetics/pharmacodynamics integration in dosage regimen optimization for veterinary medicine. *J Vet Pharmacol Ther* (2003) **26**:1–8. doi:10.1208/ps040438
- Drusano GL. Antimicrobial pharmacodynamics: critical interactions of 'bug and drug'. *Nat Rev Microbiol* (2004) **2**:289–300. doi:10.1038/nrmicro862
- Mouton JW, Dudley MN, Cars O, Derendorf H, Drusano GL. Standardization of pharmacokinetic/pharmacodynamic (PK/PD) terminology for anti-infective drugs: an update. *J Antimicrob Chemother* (2005) **55**:601–7. doi:10.1093/jac/dki079
- Toutain P-L, Del Castillo JR, Bousquet-Mélou A. The pharmacokinetic-pharmacodynamic approach to a rational dosage regimen for antibiotics. *Res Vet Sci* (2002) **73**:105–14. doi:10.1016/S0034-5288(02)00039-5
- Craig WA. Pharmacokinetic/pharmacodynamic parameters: rationale for antibacterial dosing of mice and men. *Clin Infect Dis* (1998) **26**:1–10. doi:10.1086/516284
- Andes D, Craig W. Animal model pharmacokinetics and pharmacodynamics: a critical review. *Int J Antimicrob Agents* (2002) **19**:261–8. doi:10.1016/S0924-8579(02)00022-5
- Schentag JJ, Gilliland KK, Paladino JA. What have we learned from pharmacokinetic and pharmacodynamic theories? *Clin Infect Dis* (2001) **32**:S39–46. doi:10.1086/319375
- Ball P, Baquero F, Cars O, File T, Garau J, Klugman K, et al. Antibiotic therapy of community respiratory tract infections: strategies for optimal outcomes and minimized resistance emergence. *J Antimicrob Chemother* (2002) **49**:31–40. doi:10.1093/jac/49.1.31
- Webber M, Piddock LJ. Quinolone resistance in *Escherichia coli*. *Vet Res* (2001) **32**:275–84. doi:10.1051/vetres:2001150
- Chansiripornchai N, Sasipreeyajan J. Efficacy of sarafloxacin in broilers after experimental infection with *Escherichia coli*. *Vet Res Commun* (2002) **26**:255–62. doi:10.1023/A:1016078222398
- Fiorentin L, Soncini RA, Da Costa JLA, Mores MA, Trevisol IM, Toda M, et al. Apparent eradication of *Mycoplasma synoviae* in broiler breeders subjected to intensive antibiotic treatment directed to control *Escherichia coli*. *Avian Pathol* (2003) **32**:213–6. doi:10.1080/0307945021000071641
- Kaartinen L, Salonen M, Älli L, Pyörälä S. Pharmacokinetics of enrofloxacin after single intravenous, intramuscular and subcutaneous injections in lactating cows. *J Vet Pharmacol Ther* (1995) **18**:357–62. doi:10.1111/j.1365-2885.1995.tb00604.x
- Giguere S, Sweeney R, Belanger M. Pharmacokinetics of enrofloxacin in adult horses and concentration of the drug in serum, body fluids, and endometrial tissues after repeated intragastrically administered doses. *Am J Vet Res* (1996) **57**:1025–30.
- Anadon A, Martinez-Larra Aga M, Diaz M, Fernandez-Cruz M, Martinez M, Frejo M, et al. Pharmacokinetic variables and tissue residues of enrofloxacin and ciprofloxacin in healthy pigs. *Am J Vet Res* (1999) **60**:1377–82.
- Elmas M, Tras B, Kaya S, Bas AL, Yazar E, Yarsan E. Pharmacokinetics of enrofloxacin after intravenous and intramuscular administration in Angora goats. *Can J Vet Res* (2001) **65**:64.
- McKellar Q, Sanchez Bruni S, Jones D. Pharmacokinetic/pharmacodynamic relationships of antimicrobial drugs used in veterinary medicine. *J Vet Pharmacol Ther* (2004) **27**:503–14. doi:10.1111/j.1365-2885.2004.00603.x
- Haritova AM, Rusenova NV, Parvanov PR, Lashev LD, Fink-Gremmels J. Integration of pharmacokinetic and pharmacodynamic indices of marbofloxacin in turkeys. *Antimicrob Agents Chemother* (2006) **50**:3779–85. doi:10.1128/AAC.00711-05
- Levison ME. Pharmacodynamics of antimicrobial drugs. *Infect Dis Clin North Am* (2004) **18**:451–65. doi:10.1016/j.idc.2004.04.012
- Garcia Ovando H, Gorla N, Luders C, Poloni G, Errecalde C, Prieto G, et al. Comparative pharmacokinetics of enrofloxacin and ciprofloxacin in chickens. *J Vet Pharmacol Ther* (1999) **22**:209–12. doi:10.1046/j.1365-2885.1999.00211.x
- Slana M, Pahor V, Cvitković Maričić L, Sollner-Dolenc M. Excretion pattern of enrofloxacin after oral treatment of chicken broilers. *J Vet Pharmacol Ther* (2014) **37**:611–4. doi:10.1111/jvp.12130
- Wiuff C, Lykkesfeldt J, Aarestrup FM, Svendsen O. Distribution of enrofloxacin in intestinal tissue and contents of healthy pigs after oral and intramuscular administrations. *J Vet Pharmacol Ther* (2002) **25**:335–42. doi:10.1046/j.1365-2885.2002.00430.x
- Devreese M, Antonissen G, De Baere S, De Backer P, Croubels S. Effect of administration route and dose escalation on plasma and intestinal concentrations of enrofloxacin and ciprofloxacin in broiler chickens. *BMC Vet Res* (2014) **10**:289. doi:10.1186/s12917-014-0289-1
- Blanco J, Blanco M, Alonso MP, Blanco JE, Garabal JJ, Gonzale EA. Serogroups of *Escherichia coli* strains producing cytotoxic necrotizing factors CNF1 and CNF2. *FEMS Microbiol Lett* (1992) **75**:155–9. doi:10.1111/j.1574-6968.1992.tb05409.x
- Haritova A, Urumova V, Lutcanov M, Petrov V, Lashev L. Pharmacokinetic-pharmacodynamic indices of enrofloxacin in *Escherichia coli* O78/H12 infected chickens. *Food Chem Toxicol* (2011) **49**(7):1530–6. doi:10.1016/j.fct.2011.03.044
- Pasquali F, Manfreda G. Mutant prevention concentration of ciprofloxacin and enrofloxacin against *Escherichia coli*, *Salmonella typhimurium* and *Pseudomonas aeruginosa*. *Vet Microbiol* (2007) **119**(2):304–10. doi:10.1016/j.vetmic.2006.08.018
- McKellar Q, Gibson I, Monteiro A, Bregante M. Pharmacokinetics of enrofloxacin and danofloxacin in plasma, inflammatory exudate, and bronchial

- secretions of calves following subcutaneous administration. *Antimicrob Agents Chemother* (1999) **43**:1988–92.
31. Moraru R, Pourcher A-M, Jadas-Hecart A, Kempf I, Ziebal C, Kervarrec M, et al. Changes in concentrations of fluoroquinolones and of ciprofloxacin-resistant in chicken feces and manure stored in a heap. *J Environ Qual* (2012) **41**:754–63. doi:10.2134/jeq2011.0313
 32. Mengozzi G, Intorre L, Bertini S, Soldani G. Pharmacokinetics of enrofloxacin and its metabolite ciprofloxacin after intravenous and intramuscular administrations in sheep. *Am J Vet Res* (1996) **57**:1040–3.
 33. Kumar N, Singh SD, Jayachandran C. Pharmacokinetics of enrofloxacin and its active metabolite ciprofloxacin and its interaction with diclofenac after intravenous administration in buffalo calves. *J Vet Pharmacol Toxicol* (2003) **165**:302–6. doi:10.1016/S1090-0233(02)00248-4
 34. Idowu O, Peggins J, Cullison R, Von Bredow J. Comparative pharmacokinetics of enrofloxacin and ciprofloxacin in lactating dairy cows and beef steers following intravenous administration of enrofloxacin. *Res Vet Sci* (2010) **89**:230–5. doi:10.1016/j.rvsc.2009.12.019
 35. Carreras I, Castellari M, Regueiro JG, Guerrero L, Esteve-Garcia E, Sarraga C. Influence of enrofloxacin administration and α -tocopheryl acetate supplemented diets on oxidative stability of broiler tissues. *Poult Sci* (2004) **83**:796–802. doi:10.1093/ps/83.5.796
 36. Dimitrova D, Lashev L, Yanev S, Pandova B. Pharmacokinetics of enrofloxacin in turkeys. *Res Vet Sci* (2007) **82**:392–7. doi:10.1016/j.rvsc.2006.09.004
 37. Prescott JF, Yielding KM. In vitro susceptibility of selected veterinary bacterial pathogens to ciprofloxacin, enrofloxacin and norfloxacin. *Can J Vet Res* (1990) **54**:195.
 38. Ozawa M, Baba K, Shimizu Y, Asai T. Comparison of in vitro activities and pharmacokinetics/pharmacodynamics estimations of veterinary fluoroquinolones against avian pathogenic *Escherichia coli* isolates. *Microb Drug Resist* (2010) **16**:327–32. doi:10.1089/mdr.2010.0024
 39. Aliabadi FS, Lees P. Pharmacokinetic-pharmacodynamic integration of danofloxacin in the calf. *Res Vet Sci* (2003) **74**:247–59. doi:10.1016/S0034-5288(03)00005-5
 40. Sidhu P, Landoni M, Aliabadi M, Toutain P-L, Lees P. Pharmacokinetic and pharmacodynamic modelling of marbofloxacin administered alone and in combination with tolfenamic acid in calves. *J Vet Pharmacol Ther* (2011) **34**:376–87. doi:10.1111/j.1365-2885.2010.01247.x
 41. Meinen J, McClure J, Rosin E. Pharmacokinetics of enrofloxacin in clinically normal dogs and mice and drug pharmacodynamics in neutropenic mice with *Escherichia coli* and staphylococcal infections. *Am J Vet Res* (1995) **56**:1219–24.
 42. Anadon A, Martinez-Larranaga M, Iturbe J, Martinez M, Diaz M, Frejo M, et al. Pharmacokinetics and residues of ciprofloxacin and its metabolites in broiler chickens. *Res Vet Sci* (2001) **71**:101–9. doi:10.1053/rvsc.2001.0494
 43. Forrest A, Nix DE, Ballow CH, Goss TF, Birmingham M, Schentag J. Pharmacodynamics of intravenous ciprofloxacin in seriously ill patients. *Antimicrob Agents Chemother* (1993) **37**:1073–81. doi:10.1128/AAC.37.5.1073
 44. Balaje RM, Sidhu PK, Kaur G, Rampal S. Mutant prevention concentration and PK/PD relationships of enrofloxacin for *Pasteurella multocida* in buffalo calves. *Res Vet Sci* (2013) **95**:1114–24. doi:10.1016/j.rvsc.2013.07.019
 45. Blaser J, Stone BB, Groner MC, Zinner SH. Comparative study with enoxacin and netilmicin in a pharmacodynamic model to determine importance of ratio of antibiotic peak concentration to MIC for bactericidal activity and emergence of resistance. *Antimicrob Agents Chemother* (1987) **31**:1054–60. doi:10.1128/AAC.31.7.1054
 46. Zhao X, Drlica K. Restricting the selection of antibiotic-resistant mutants: a general strategy derived from fluoroquinolone studies. *Clin Infect Dis* (2001) **33**:S147–56. doi:10.1086/321841
 47. Olofsson SK, Marcusson LL, Lindgren PK, Hughes D, Cars O. Selection of ciprofloxacin resistance in *Escherichia coli* in an in vitro kinetic model: relation between drug exposure and mutant prevention concentration. *J Antimicrob Chemother* (2006) **57**:1116–21. doi:10.1093/jac/dkl135
 48. Ferran A, Dupouy V, Toutain P-L, Bousquet-Mélou A. Influence of inoculum size on the selection of resistant mutants of *Escherichia coli* in relation to mutant prevention concentrations of marbofloxacin. *Antimicrob Agents Chemother* (2007) **51**:4163–6. doi:10.1128/AAC.00156-07

Conflict of Interest Statement: The authors declare that the research was conducted in the absence of any commercial or financial relationships that could be construed as a potential conflict of interest.

Copyright © 2016 Sang, Hao, Huang, Wang and Yuan. This is an open-access article distributed under the terms of the Creative Commons Attribution License (CC BY). The use, distribution or reproduction in other forums is permitted, provided the original author(s) or licensor are credited and that the original publication in this journal is cited, in accordance with accepted academic practice. No use, distribution or reproduction is permitted which does not comply with these terms.