



Consciousness in Jawless Fishes

Daichi G. Suzuki^{1,2*}

¹ Graduate School of Life and Environmental Sciences, University of Tsukuba, Tsukuba, Japan, ² Center for Human Nature, Artificial Intelligence, and Neuroscience (CHAIN), Hokkaido University, Sapporo, Japan

Jawless fishes were the first vertebrates to evolve. It is thus important to investigate them to determine whether consciousness was acquired in the common ancestor of all vertebrates. Most jawless fish lineages are extinct, and cyclostomes (lampreys and hagfish) are the sole survivors. Here, I review the empirical knowledge on the neurobiology of cyclostomes with special reference to recently proposed “markers” of primary, minimal consciousness. The adult lamprey appears to meet the neuroanatomical criteria but there is a practical limitation to behavioral examination of its learning ability. In addition, the consciousness-related neuroarchitecture of larvae and its reconstruction during metamorphosis remain largely uninvestigated. Even less is known of hagfish neurobiology. The hagfish forebrain forms the central prosencephalic complex, and the homology of its components to the brain regions of other vertebrates needs to be confirmed using modern techniques. Nevertheless, as behavioral responses to olfactory stimuli in aquariums have been reported, it is easier to investigate the learning ability of the hagfish than that of the lamprey. Based on these facts, I finally discuss the potential future directions of empirical studies for examining the existence of consciousness in jawless fishes.

Keywords: cyclostome, lamprey, ammocoetes, hagfish, minimal consciousness, primary consciousness

OPEN ACCESS

Edited by:

Louis Neal Irwin,
The University of Texas at El Paso,
United States

Reviewed by:

Yasunori Murakami,
Ehime University, Japan
Culum Brown,
Macquarie University, Australia

*Correspondence:

Daichi G. Suzuki
suzuki.daichi.gp@u.tsukuba.ac.jp

Received: 02 August 2021

Accepted: 02 September 2021

Published: 24 September 2021

Citation:

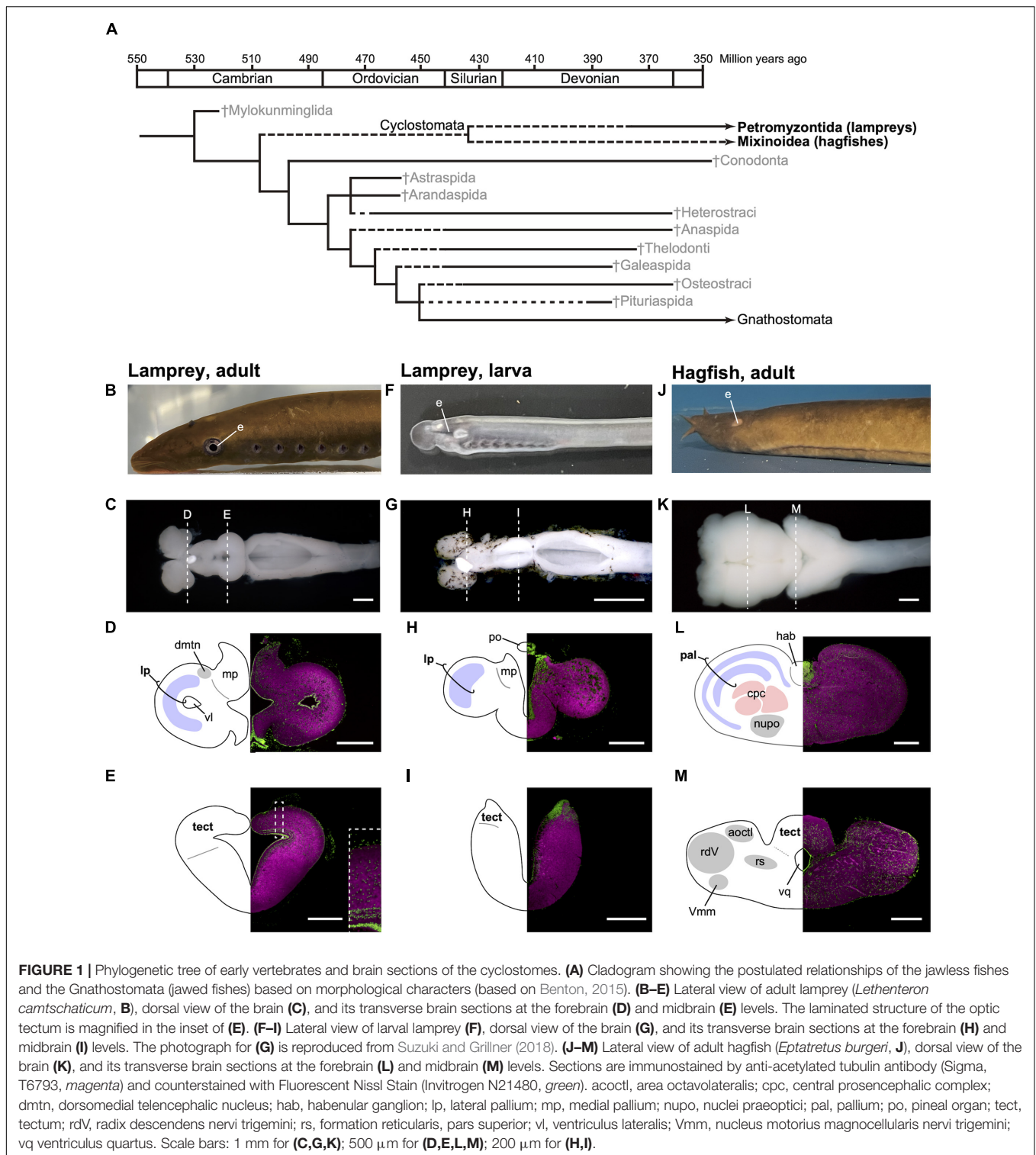
Suzuki DG (2021) Consciousness
in Jawless Fishes.
Front. Syst. Neurosci. 15:751876.
doi: 10.3389/fnsys.2021.751876

INTRODUCTION

The first vertebrates did not have a jaw. These jawless fishes (agnathans) prospered in the Paleozoic, but most of them went extinct (**Figure 1A**). Cyclostomes are the only extant agnathans, consisting of lampreys and hagfish. The jawed vertebrates (gnathostomes) evolved from one of these jawless lineages and then diverged. From a cladistic perspective, the terms “jawless fishes,” “jawless vertebrates,” and “agnathans” are invalid because they refer to a paraphyletic group. Nevertheless, I use these terms in here for convenience.

Until recently, it was thought that consciousness is limited to the animals with relatively high cognitive ability, such as mammals, birds, and perhaps cephalopods (e.g., Edelman et al., 2005; Edelman and Seth, 2009). However, various researchers have started to consider that all vertebrates, including fishes, share a basic type of consciousness, called primary consciousness or minimal consciousness (Feinberg and Mallatt, 2013, 2016, 2018; Brown, 2015; Bronfman et al., 2016; Ginsburg and Jablonka, 2019; Godfrey-Smith, 2016, 2020). If this is the case, the cyclostomes are important because they are the only remaining stem vertebrates.

Although lampreys and hagfish form a monophyletic group, their brain structures are distinct, reflecting their different lifestyles and lineage-specific adaptations (**Figures 1B–M**). It is thus important to note that modern cyclostomes possess both ancestral and derivative characters. Lampreys spend several years as filter-feeding ammocoetes larvae, which burrow in riverbeds.



As the larva has immature eyes (**Figure 1F**), the optic tectum (the main visual center in non-mammalian vertebrates) also remains undeveloped (**Figure 1I**). On metamorphosis, the animal transforms into an active parasitic predator. Some lampreys are landlocked and breed soon after metamorphosis, while others

migrate downstream to the sea or a large lake to attack their prey. The adult lamprey has well-developed eyes (**Figure 1B**) and a mature, layered optic tectum (**Figure 1E**). A recent study found that the lateral pallium of the lamprey has three layers, presumably representing the ancestral vertebrate state,

from which the mammalian cortex is derived (Suryanarayana et al., 2017). In comparison, the hagfish undergoes direct development and has adapted to the deep sea, so its eyes and tectum are degenerate (**Figures IJ,M**). The hagfish forebrain is enlarged (**Figure IL**) and predominantly receives olfactory input (Wicht and Northcutt, 1993).

In this paper, I explore the current empirical knowledge on the neurobiology of cyclostomes in light of the evolution of consciousness. First, I briefly describe recently proposed “markers” of primary, minimal consciousness. Then, I review current empirical knowledge on the neurobiology of lampreys and hagfish, examining the extent to which the existence of the “markers” is supported in these organisms. Lastly, I discuss possible directions for further studies of consciousness in jawless fishes.

“MARKERS” OF PRIMARY, MINIMAL CONSCIOUSNESS

Among recently proposed accounts of the evolution of consciousness, the theories of Feinberg and Mallatt (2016, 2018), and Ginsburg and Jablonka (2019) are the most detailed and supported by abundant empirical data. In discussing the evolutionary origin of consciousness, the authors use different “markers” of consciousness, while their conclusions are the same; they agree that all vertebrates, as well as some arthropods (including insects) and cephalopods (possibly only coleoids), have consciousness. In this section, I briefly review the two theories and the “markers” of consciousness suggested by these authors.

Feinberg and Mallatt (2016, 2018) distinguish two major aspects of consciousness, exteroceptive and affective consciousness; interoceptive consciousness is intermediate to the two (Feinberg and Mallatt, 2018, Figure 2.4). Their criteria for the exteroceptive consciousness consist of several “special” neurobiological features; complex neural hierarchies (i.e., true brains), isomorphic representations (e.g., somatotopy and retinotopy), multimodal integration (“nested and non-nested hierarchical functions” in their words), interregional neural interactions, and attention. The neuroanatomical and behavioral criteria for affective consciousness include operant learning involving global affective responses and relevant reward/punishment systems [e.g., the ventral tegmental area (VTA) and habenular nucleus].

In contrast to the enumerative approach of Feinberg and Mallatt (2016, 2018), and Ginsburg and Jablonka (2019) argue that a form of associative learning, which they call “unlimited associative learning (UAL),” is *the* positive marker of consciousness. UAL requires a list of capacities (e.g., global accessibility, binding, selective attention, evaluative system, and agency) that suffice for being conscious (Birch et al., 2020). Lacking clear evidence for UAL, they also admit “proxies,” including Pavlovian conditioning with compound conditional stimuli, operant conditioning involving novel action patterns, conceptual learning, and navigation learning (Ginsburg and Jablonka, 2019, Table 8.1).

These criteria for consciousness raise two questions. How many of the features listed in the criteria of consciousness proposed by Feinberg and Mallatt (2016) do lampreys and hagfish possess, and do the cyclostomes show UAL or its proxies? In the following sections, I examine these questions applying available empirical evidence.

LAMPREY

The adult lamprey has been used as an experimental model for investigating the basic neuroarchitecture of vertebrates (Grillner et al., 1998; Auclair and Dubuc, 2020), and its neurobiology is relatively well-known. Feinberg and Mallatt (2016) use this knowledge to discuss whether the lamprey has consciousness based on their criteria (pp. 104–115). Current neurobiological findings in fact indicate that the lamprey meets their criteria for exteroceptive consciousness as follows (see also **Table 1**). First, the lamprey brain shares basic brain regions (i.e., the telencephalon, diencephalon, mesencephalon, cerebellum, and rhombencephalon) and developmental mechanisms with other vertebrates (Pombal and Puelles, 1999; Murakami et al., 2001; Pombal et al., 2009; Sugahara et al., 2011, 2016; Murakami, 2017). Second, the optic tectum has a laminar structure, of which the superficial layer receives visual input with retinotopy (Jones et al., 2009). Third, electroceptive inputs are sent to the intermediate layer with spaciotopy, being integrated with visual perception (Kardamakis et al., 2016). In addition, retinotopic and somatotopic organization is found in the lateral portion of the pallium (a telencephalic structure homologous to the mammalian cortex) (Suryanarayana et al., 2020). The lateral pallium sends output to the optic tectum (Ocaña et al., 2015), while the optic tectum sends its fibers to the thalamus (Northcutt and Wicht, 1997), which is the relay center between the pallium/cortex and other brain regions. This suggests that there is a mutual interaction between the pallium and optic tectum (Suzuki and Grillner, 2018, Figure 1C). Lastly, the optic tectum also has mutual connections to the SNc/VTA (SNc: substance nigra pars compacta), which detects the saliency of the visual stimuli and returns the information to the optic tectum via dopaminergic axons (Pérez-Fernández et al., 2017).

Regarding affective consciousness, the lamprey possesses the neuroarchitecture for reward/punishment systems. For example, dopaminergic neurons in the SNc/VTA region send axons not only to the optic tectum (as mentioned above) but also to the basal ganglia, which presumably contributes to reward prediction and motor decision-making based on the prediction (Stephenson-Jones et al., 2011; Pérez-Fernández et al., 2017). The lateral habenula is also present and probably contributes to the reward coding and aversive behavior (Stephenson-Jones et al., 2012; Grillner et al., 2018). The medial habenula sends projections to the interpeduncular nucleus (IPN) and further to the PAG/griseum centrale (PAG: periaqueductal gray) and is perhaps mediates freezing and flight responses (Stephenson-Jones et al., 2012; Grillner et al., 2018). However, little behavioral research has examined learning in the lamprey due to the practical limitation that available adult lampreys

TABLE 1 | The criteria of consciousness and neurobiological evidence in the cyclostomes.

	Lamprey, Adult		Lamprey, Larva		Hagfish	
Feinberg and Mallatt (2016)						
Exteroceptive consciousness						
Complex neural hierarchy (true brain)	Yes	Murakami, 2017; Murakami et al., 2001; Sugahara et al., 2011, 2016 Pombal and Puelles, 1999 Pombal et al., 2009	Yes	Murakami et al., 2001; Murakami, 2017 Sugahara et al., 2011, 2016	Yes	Larsell, 1947, 1967; Murakami, 2017 Sugahara et al., 2016, 2017
Isomorphic representations	Yes	Jones et al., 2009; Kardamakis et al., 2016	n.d.	–	Yes ?	Amemiya, 1983; Nishizawa et al., 1988
Multimodal integration	Yes	Kardamakis et al., 2016	n.d.	–	Yes ?	Ronan, 1988; Ronan and Northcutt, 1990; Wicht and Nieuwenhuys, 1998
Interregional neural interaction	Yes	Northcutt and Wicht, 1997; Ocaña et al., 2015	n.d.	–	n.d.	–
Attention	Yes	Pérez-Fernández et al., 2017	n.d.	–	n.d.	–
Affective consciousness						
Operant learning involving global affective response	n.d.	–	n.d.	–	n.d.	–
The relevant reward/punishment system (e.g., VTA, habenular nucleus)	Yes	Stephenson-Jones et al., 2011, 2012; Pérez-Fernández et al., 2017; Grillner et al., 2018	n.d.	–	n.d.	–
Ginsburg and Jablonka (2019)						
UAL or its proxies	n.d.	–	n.d.	–	n.d.	–

n.d., not determined.

are postmetamorphic juveniles before downstream migration or mature upstream-migrated fish, both of which lack appetites, making them unsuitable for learning experiments using food rewards. Notably, anadromous adult lamprey can only be alpha conditioned [i.e., conditioning that is based on habituated unconditional stimuli (USs)] and do not show true Pavlovian conditioning when strong lights, strong electric shocks, and nocuous tactile stimulations are used as USs, and weak lights, mild shocks, mild tactile stimuli, sounds, and odors are used and conditional stimuli (CSs) preceding the USs by 3–5 s (Sergeyev, 1964; Razran, 1971).

Interestingly, the lamprey brain changes drastically during postembryonic development. The larval tectum remains immature and becomes laminated during metamorphosis, as mentioned above. The primary retina, which forms during embryogenesis, is also immature and thought to function in non-directional or broadly directional photoreception (Villar-Cerviño et al., 2006; Suzuki et al., 2015a,b; Suzuki and Grillner, 2018). The primary optic nerve projects not to the optic tectum but to the diencephalic pretectum (Suzuki et al., 2015a). A similar neural organization for photoreception is found in amphioxus (Suzuki et al., 2015a), which is a close invertebrate relative of vertebrates and judged to be non-conscious based on the criteria of Feinberg and Mallatt (2016). There are differences in

the cytological architecture (discussed in Suzuki et al., 2015a), suggesting a need to analyze the origin of the vertebrate visual system in terms of cell type evolution, possibly with reference to genome duplication in the vertebrate lineage. Nonetheless, the architectural similarity between the two groups implies that the lamprey larval neural circuits for photoreception represent an ancestral state before the evolution of image-forming vision. The marginal region of the primary retina expands into the secondary retina during the entire larval period. The retinal ganglion cells in this secondary retina differentiate before metamorphosis, and the secondary optic nerve projects to the optic tectum with retinotopy (Cornide-Petronio et al., 2011), whereas other retinal cell types (the photoreceptors, horizontal cells, and amacrine cells) differentiate during metamorphosis (De Miguel et al., 1989; Pombal et al., 2003; Villar-Cerviño et al., 2006; Abalo et al., 2008). Thus, the image-forming vision established by the optic tectum is actualized only after the metamorphosis (Suzuki and Grillner, 2018; Suzuki et al., 2019). These findings suggest that the consciousness-related neural circuits are immature during the larval stage and are then reconstructed into the full-blown, functional neuroarchitecture for consciousness during metamorphosis. In other words, the lamprey may undergo transformation from a non-conscious larva to a conscious adult (Suzuki and Grillner, 2018).

Furthermore, the similarity of the neural organization for photoreception between the amphioxus and lamprey larvae implies parallelism between the developmental transformation in the lamprey and the evolutionary transformation in the vertebrate lineage from non-conscious to conscious. However, a recent fossil study indicated that stem lampreys lacked the ammocoetes larval stage (Miyashita et al., 2021), suggesting that the metamorphosis of modern lampreys was acquired secondarily. Evans et al. (2018) agree that ancestral lampreys were direct developers and propose a “condensation hypothesis,” which holds that stem lampreys possessed both modern larval and juvenile characters. Differential selection favored segregation of the larval characters in the beginning of the life history and juvenile characters after, requiring metamorphosis to accommodate such body reconstruction. If this is the case, it is possible that stem lampreys gradually developed derivative consciousness-related brain structures, including an image-forming visual system, without evident metamorphosis. Then the development of those structures was condensed in later stages, accompanied by the acquisition of metamorphosis. In either case, the relationship between the evolutionary origin of vertebrate consciousness and the development of lamprey consciousness is an intriguing research topic in terms of evolutionary developmental (evo-devo) biology. Nevertheless, the neural circuits in the larval brain and their transformation during metamorphosis, especially of the optic tectum, remain largely uninvestigated and need further study. The learning ability of the ammocoetes larva is also unknown.

Therefore, the adult lamprey meet the criteria of Feinberg and Mallatt (2016) for exteroceptive consciousness. For affective consciousness, the neuroanatomical criteria are satisfied, although behavioral evidence is lacking. The existence of UAL or its proxies has not been confirmed, thus not meeting the requirement of Ginsburg and Jablonka (2019). The larval lamprey does not appear to satisfy any of the criteria described above, although much more study is needed. If in fact the lamprey changes from non-conscious to conscious during metamorphosis, studies of this transformation will provide valuable information about both the development and evolution of consciousness.

HAGFISH

Much less is known about the neurobiology of the hagfish than that of the lamprey. Although a recent developmental study revealed that the developmental mechanisms underlying formation of the forebrain are conserved in the hagfish (Sugahara et al., 2016), the hagfish forebrain later forms the central prosencephalic complex, and the homology of its components to the brain regions of other vertebrates is unclear (Wicht and Nieuwenhuys, 1998). As a hagfish-specific character, there is no overt epiphysis. A morphologically distinct cerebellum is also absent, while developmental genes involved in cerebellum formation (*Pax6* and *Atoh1*) are expressed in the rhombic lip, from which the cerebellum differentiates (Sugahara et al., 2016, 2017). At the posterior end of the midbrain, there is a portion of

the acousticolateral (or vestibulolateral) commissure, which can be regarded as the rudimentary cerebellum (Larsell, 1947, 1967; Sugahara et al., 2017). These findings suggest that the common ancestor of vertebrates possessed at least a non-layered simple cerebellum, similar to that of lampreys.

As mentioned above, the hagfish has degenerate eyes due to adaptation to the deep sea. Fossil evidence indicates that this is a secondary modification specific to the hagfish lineage (Gabbott et al., 2016). In concordance with the degeneration of the eyes, the retinotectal projection is largely reduced, and the retinopretectal pathway becomes dominant (Kusunoki and Amemiya, 1983; Wicht and Northcutt, 1990). Despite no empirical evidence, the degenerate state of the eyes and retinotectal projection implies no or severely disorganized retinotopy in the tectum. Still, it receives inputs from various regions responsible for different sensory modalities (e.g., the octavolateral area, sensory nucleus of the trigeminal nerve, and dorsal column nuclei), suggesting that it functions as an integrative center (Amemiya, 1983; Ronan, 1988; Ronan and Northcutt, 1990; Wicht and Nieuwenhuys, 1998). Furthermore, primary trigeminal afferents are arranged somatotopically in the sensory nucleus of the trigeminal nerve according to the ramus in which they are distributed toward the periphery (Nishizawa et al., 1988). It remains to be determined whether this somatotopic organization is maintained in the tectum. In addition, the hagfish has peculiar taste bud-like chemosensory organs, the Schreiner organs, which are distributed throughout the epidermis and in the prenasal sinus, nasopharyngeal duct, and pharynx at high densities, and in the oral and velar chambers at lower densities (Braun, 1998). These organs are innervated by the trigeminal and glossopharyngeal/vagal nerves and the cutaneous rami of spinal nerves (Braun, 1998). It is plausible that the mechanosensory and chemosensory perception are initially segregated in the primary receptive areas and they are integrated with each other and inputs from other sensory modalities in a higher integrative center. One possibility is that the chemosensory inputs from the Schreiner organs are also received by the tectum. However, these postulates lack solid empirical evidence.

The most prominent sensory modality in the hagfish is olfaction. Its main brain center is the pallium, the forebrain region homologous to the mammalian cortex (Wicht and Northcutt, 1993). The hagfish pallium consists of five layers (Jansen, 1930; Wicht and Northcutt, 1992). Recently, Suryanarayana et al. (2017, 2021) revealed that the lamprey has three layered cortices, which share neuroanatomical and neurophysiological features with those of the reptiles, perhaps being a precursor of the mammalian six-layered neocortex. However, no molecular studies have examined layer-specific genes. Expression analysis on the layer-specific genes is required to elucidate the evolutionary relationships between the five hagfish and three lamprey layers (i.e., which hagfish and lamprey layers correspond), and between the three lamprey layers and the three reptile layers (i.e., whether they are truly homologous or just convergent).

Despite the patchy information, the above findings suggest that the hagfish satisfies some features listed in the criteria of Feinberg and Mallatt (2016) for exteroceptive consciousness

(Table 1). However, many of the consciousness-related neuroanatomical features remain to be investigated, including the attention and affective systems.

Still, the hagfish appears to have an advantage in behavioral experiments over the lamprey because it will feed in an aquarium. Recently, Glover et al. (2019) reported that the chemosensory behavior of the hagfish can be assessed using a modified T-maze arena, in which food or noxious stimuli are placed in one of the arms of the maze. This suggests that hagfish learning behavior can be investigated using food as a reward. The degenerate vision of the hagfish is a disadvantage in designing learning experiments. However, odor, taste, and tactile stimuli can be combined to apply compound stimuli, which are required for UAL or its proxies.

CONCLUSION AND FUTURE DIRECTIONS

The cyclostomes are the sole surviving jawless fishes, which were the first vertebrates to evolve. To examine the existence of consciousness in jawless fishes, I assessed knowledge on the neurobiology of the cyclostomes, i.e., lampreys and hagfish, while referring to recently proposed criteria for animal consciousness. The neuroanatomy of the adult lamprey meets the criteria of Feinberg and Mallatt (2016) for exteroceptive consciousness, but much information is lacking.

First, the learning behavior of the adult lamprey needs to be investigated to determine whether the criteria of Feinberg and Mallatt (2016) for affective consciousness are satisfied and whether UAL or its proxies (Ginsburg and Jablonka, 2019) are observed. For this purpose, an innovative experimental design is needed, since available adults do not show appetitive behavior in an aquarium.

REFERENCES

- Abalo, X. M., Villar-Cervino, V., Villar-Cheda, B., Anadón, R., and Rodicio, M. C. (2008). Neurochemical differentiation of horizontal and amacrine cells during transformation of the sea lamprey retina. *J. Chem. Neuroanat.* 35, 225–232. doi: 10.1016/j.jchemneu.2007.12.002
- Amemiya, F. (1983). Afferent connections to the tectum mesencephali in the hagfish, *Eptatretus burgeri*: an HRP study. *J. Hirnforsch.* 24, 225–236.
- Auclair, F., and Dubuc, R. (2020). “Neural control of swimming in lampreys,” in *The Neural Control of Movement*, eds P. J. Whelan and S. A. Sharples (London: Academic Press), 99–123. doi: 10.1016/B978-0-12-816477-8.0005-3
- Benton, M. J. (2015). *Vertebrate Palaeontology*, 4th Edn. Oxford: Wiley Blackwell.
- Birch, J., Ginsburg, S., and Jablonka, E. (2020). Unlimited Associative Learning and the origins of consciousness: a primer and some predictions. *Biol. Philos.* 35:56. doi: 10.1007/s10539-020-09772-0
- Braun, C. B. (1998). Schreiner organs: a new craniate chemosensory modality in hagfishes. *J. Comp. Neurol.* 392, 135–163. doi: 10.1002/(SICI)1096-9861(19980309)392:2<135::AID-CNE1>3.0.CO;2-3
- Bronfman, Z. Z., Ginsburg, S., and Jablonka, E. (2016). The transition to minimal consciousness through the evolution of associative learning. *Front. Psychol.* 7:1954. doi: 10.3389/fpsyg.2016.01954
- Brown, C. (2015). Fish intelligence, sentience and ethics. *Anim. Cogn.* 18, 1–17. doi: 10.1007/s10071-014-0761-0

Second, the consciousness-related neural circuits in the larval brain and their transformation during metamorphosis, as well as the learning ability of the larva, will be an intriguing subject from the evo-devo perspective on consciousness. Establishment of the multimodal isomorphic (e.g., retinotopic and electroceptive spatiotopic) organization of the optic tectum is of special interest.

Lastly, the neurobiology of the hagfish is less developed in terms of neuroanatomy, neurophysiology, and neuroethology. Further studies using modern approaches, such as gene expression analysis, would improve our understanding of this mysterious creature.

To conclude, we have patchy knowledge on the neurobiology of the cyclostomes for discussing the consciousness of jawless fishes. Despite taxon-specific difficulties in their investigation, further effort is required to elucidate the early evolution of consciousness in the vertebrate lineage.

DATA AVAILABILITY STATEMENT

The original contributions presented in the study are included in the article/supplementary material, further inquiries can be directed to the corresponding author.

AUTHOR CONTRIBUTIONS

DS wrote the manuscript.

FUNDING

This work was supported by the Japan Society for the Promotion of Science (JSPS) under Grants 20K00275 and 20K15855.

- Cornide-Petronio, M. E., Barreiro-Iglesias, A., Anadón, R., and Rodicio, M. C. (2011). Retinotopy of visual projections to the optic tectum and pretectum in larval sea lamprey. *Exp. Eye Res.* 92, 274–281. doi: 10.1016/j.exer.2011.01.011
- De Miguel, E., Rodicio, M. C., and Anadón, R. (1989). Ganglion cells and retinopetal fibers of the larval lamprey retina: an HRP ultrastructural study. *Neurosci. Lett.* 106, 1–6. doi: 10.1016/0304-3940(89)90192-4
- Edelman, D. B., and Seth, A. K. (2009). Animal consciousness: a synthetic approach. *Trends Neurosci.* 32, 476–484. doi: 10.1016/j.tins.2009.05.008
- Edelman, D. B., Baars, B. J., and Seth, A. K. (2005). Identifying hallmarks of consciousness in non-mammalian species. *Conscious. Cogn.* 14, 169–187. doi: 10.1016/j.concog.2004.09.001
- Evans, T. M., Janvier, P., and Docker, M. F. (2018). The evolution of lamprey (Petromyzontida) life history and the origin of metamorphosis. *Rev. Fish Biol. Fisheries* 28, 825–838. doi: 10.1007/s11160-018-9536-z
- Feinberg, T. E., and Mallatt, J. (2013). The evolutionary and genetic origins of consciousness in the cambrian period over 500 million years ago. *Front. Psychol.* 4:667. doi: 10.3389/fpsyg.2013.00667
- Feinberg, T. E., and Mallatt, J. M. (2016). *The Ancient Origins of Consciousness: How the Brain Created Experience*. Cambridge, MA: MIT Press. doi: 10.7551/mitpress/10714.001.0001
- Feinberg, T. E., and Mallatt, J. M. (2018). *Consciousness Demystified*. Cambridge, MA: MIT Press. doi: 10.7551/mitpress/11793.001.0001
- Gabbott, S. E., Donoghue, P. C. J., Sansom, R. S., Vinther, J., Dolocan, A., and Purnell, M. A. (2016). Pigmented anatomy in carboniferous cyclostomes and

- the evolution of the vertebrate eye. *Proc. R. Soc. Lond. B Biol. Sci.* 283:20161151. doi: 10.1098/rspb.2016.1151
- Ginsburg, S., and Jablonka, E. (2019). *The Evolution of the Sensitive Soul: Learning and the Origins of Consciousness*. Cambridge, MA: MIT Press. doi: 10.7551/mitpress/11006.001.0001
- Glover, C. N., Newton, D., Bajwa, J., Goss, G. G., and Hamilton, T. J. (2019). Behavioural responses of the hagfish *Eptatretus stoutii* to nutrient and noxious stimuli. *Sci. Rep.* 9:13369. doi: 10.1038/s41598-019-49863-x
- Godfrey-Smith, P. (2016). "Animal evolution and the origins of experience," in *How Biology Shapes Philosophy: New Foundations for Naturalism*, ed. D. L. Smith (Cambridge: Cambridge University Press), 51–71. doi: 10.1017/9781107295490.004
- Godfrey-Smith, P. (2020). *Metazoa: Animal Minds and the Birth of Consciousness*. London: William Collins.
- Grillner, S., Ekeberg, Ö, El Manira, A., Lansner, A., Parker, D., Tegnér, J., et al. (1998). Intrinsic function of a neuronal network: a vertebrate central pattern generator. *Brain Res. Rev.* 26, 184–197. doi: 10.1016/S0165-0173(98)0002-2
- Grillner, S., Twickel, A., and Von Robertson, B. (2018). The blueprint of the vertebrate forebrain: with special reference to the habenulae. *Semin. Cell Dev. Biol.* 78, 103–106. doi: 10.1016/j.semcdb.2017.10.023
- Jansen, J. A. N. (1930). The brain of *Myxine glutinosa*. *J. Comp. Neurol.* 49, 359–507. doi: 10.1002/cne.900490302
- Jones, M. R., Grillner, S., and Robertson, B. (2009). Selective projection patterns from subtypes of retinal ganglion cells to tectum and pretectum: distribution and relation to behavior. *J. Comp. Neurol.* 517, 257–275. doi: 10.1002/cne.22154
- Kardamakis, A. A., Pérez-Fernández, J., and Grillner, S. (2016). Spatiotemporal interplay between multisensory excitation and recruited inhibition in the lamprey optic tectum. *Elife* 5:e16472. doi: 10.7554/eLife.16472
- Kusunoki, T., and Amemiya, F. (1983). Retinal projections in the hagfish, *Eptatretus burgeri*. *Brain Res.* 262, 295–298. doi: 10.1016/0006-8993(83)91021-1
- Larsell, O. (1947). The cerebellum of myxinooids and petromyzonts including developmental stages in the lampreys. *J. Comp. Neurol.* 86, 395–445. doi: 10.1002/cne.900860303
- Larsell, O. (1967). *The Comparative Anatomy and Histology of the Cerebellum*. Minneapolis, Min: University of Minnesota Press.
- Miyashita, T., Gess, R. W., Tietjen, K., and Coates, M. I. (2021). Non-ammocoete larvae of Palaeozoic stem lampreys. *Nature* 591, 408–412. doi: 10.1038/s41586-021-03305-9
- Murakami, Y. (2017). "The origin of vertebrate brain centers," in *Brain Evolution by Design: From Neural Origin to Cognitive Architecture*, eds S. Shigeno, Y. Murakami, and T. Nomura (Japan: Springer), 215–252. doi: 10.1007/978-4-431-56469-0_9
- Murakami, Y., Ogasawara, M., Sugahara, F., Hirano, S., Satoh, N., and Kuratani, S. (2001). Identification and expression of the lamprey Pax6 gene: evolutionary origin of the segmented brain of vertebrates. *Development* 128, 3521–3531. doi: 10.1242/dev.128.18.3521
- Nishizawa, H., Kishida, R., Kadota, T., and Goris, R. C. (1988). Somatotopic organization of the primary sensory trigeminal neurons in the hagfish, *Eptatretus burgeri*. *J. Comp. Neurol.* 267, 281–295. doi: 10.1002/cne.902670210
- Northcutt, R. G., and Wicht, H. (1997). Afferent and efferent connections of the lateral and medial and pallia of the silver lamprey. *Brain Behav. Evol.* 49, 1–19. doi: 10.1159/000112978
- Ocaña, F. M., Suryanarayana, S. M., Saitoh, K., Kardamakis, A. A., Capantini, L., Robertson, B., et al. (2015). The lamprey pallium provides a blueprint of the mammalian motor projections from cortex. *Curr. Biol.* 25, 413–423. doi: 10.1016/j.cub.2014.12.013
- Pérez-Fernández, J., Kardamakis, A. A., Suzuki, D. G., Robertson, B., and Grillner, S. (2017). Direct dopaminergic projections from the SNc modulate visuomotor transformation in the lamprey tectum. *Neuron* 96, 910–924. doi: 10.1016/j.neuron.2017.09.051
- Pombal, M. A., Abalo, X. M., Rodicio, M. C., Anadón, R., and González, A. (2003). Choline acetyltransferase-immunoreactive neurons in the retina of adult and developing lampreys. *Brain Res.* 993, 154–163. doi: 10.1016/j.brainres.2003.09.005
- Pombal, M. A., and Puelles, L. (1999). Prosomeric map of the lamprey forebrain based on calretinin immunocytochemistry, nissl stain, and ancillary markers. *J. Comp. Neurol.* 414, 391–422. doi: 10.1002/(SICI)1096-9861(19991122)414:3<391::AID-CNE8>3.0.CO;2-O
- Pombal, M. A., Megias, M., Bardet, S. M., and Puelles, L. (2009). New and old thoughts on the segmental organization of the forebrain in lampreys. *Brain Behav. Evol.* 74, 7–19. doi: 10.1159/000229009
- Razran, G. (1971). *Mind in Evolution: An East-West Synthesis of Learnt Behavior and Cognition*. Boston, MA: Houghton Mifflin.
- Ronan, M. (1988). The sensory trigeminal tract of Pacific hagfish. *Brain Behav. Evol.* 32, 169–180. doi: 10.1159/000116544
- Ronan, M., and Northcutt, R. G. (1990). Projections ascending from the spinal cord to the brain in petromyzontid and myxinooid agnathans. *J. Comp. Neurol.* 291, 491–508. doi: 10.1002/cne.902910402
- Sergeyev, B. F. (1964). The structure of temporary connections in lower chordates. *Zhurnal Vysshey Nervnoy Deyatel'nosti imeni I. P. Pavlova* 14, 904–910.
- Stephenson-Jones, M., Floros, O., Robertson, B., and Grillner, S. (2012). Evolutionary conservation of the habenular nuclei and their circuitry controlling the dopamine and 5-hydroxytryptophan (5-HT) systems. *Proc. Natl. Acad. Sci. U. S. A.* 109, E164–E173. doi: 10.1073/pnas.1119348109
- Stephenson-Jones, M., Samuelsson, E., Ericsson, J., Robertson, B., and Grillner, S. (2011). Evolutionary conservation of the Basal Ganglia as a common vertebrate mechanism for action selection. *Curr. Biol.* 21, 1081–1091. doi: 10.1016/j.cub.2011.05.001
- Sugahara, F., Aota, S., Kuraku, S., Murakami, Y., Takio-Ogawa, Y., Hirano, S., et al. (2011). Involvement of Hedgehog and FGF signalling in the lamprey telencephalon: evolution of regionalization and dorsoventral patterning of the vertebrate forebrain. *Development* 138, 1217–1226. doi: 10.1242/dev.059360
- Sugahara, F., Murakami, Y., Pascual-Anaya, J., and Kuratani, S. (2017). Reconstructing the ancestral vertebrate brain. *Dev. Growth Differ.* 59, 163–174. doi: 10.1111/dgd.12347
- Sugahara, F., Pascual-Anaya, J., Oisi, Y., Kuraku, S., Aota, S. I., Adachi, N., et al. (2016). Evidence from cyclostomes for complex regionalization of the ancestral vertebrate brain. *Nature* 531, 97–100. doi: 10.1038/nature16518
- Suryanarayana, S. M., Pérez-Fernández, J., Robertson, B., and Grillner, S. (2021). The lamprey forebrain: evolutionary implications. *Brain Behav. Evol.* 1–16. doi: 10.1159/000517492 [Epub ahead of print].
- Suryanarayana, S. M., Pérez-Fernández, J., Robertson, B., and Grillner, S. (2020). The evolutionary origin of visual and somatosensory representation in the vertebrate pallium. *Nat. Ecol. Evol.* 4, 639–651. doi: 10.1038/s41559-020-1137-2
- Suryanarayana, S. M., Robertson, B., Wallén, P., and Grillner, S. (2017). The lamprey pallium provides a blueprint of the mammalian layered cortex. *Curr. Biol.* 27, 3264.e–3277.e. doi: 10.1016/j.cub.2017.09.034
- Suzuki, D. G., and Grillner, S. (2018). The stepwise development of the lamprey visual system and its evolutionary implications. *Biol. Rev.* 93, 1461–1477. doi: 10.1111/brv.12403
- Suzuki, D. G., Murakami, Y., Escrava, H., and Wada, H. (2015a). A comparative examination of neural circuit and brain patterning between the lamprey and amphioxus reveals the evolutionary origin of the vertebrate visual center. *J. Comp. Neurol.* 523, 251–261. doi: 10.1002/cne.23679
- Suzuki, D. G., Murakami, Y., Yamazaki, Y., and Wada, H. (2015b). Expression patterns of *Eph* genes in the "dual visual development" of the lamprey and their significance in the evolution of vision in vertebrates. *Evol. Dev.* 17, 139–147. doi: 10.1111/ede.12119
- Suzuki, D. G., Pérez-Fernández, J., Wibble, T., Kardamakis, A. A., and Grillner, S. (2019). The role of the optic tectum for visually evoked orienting and evasive movements. *Proc. Natl. Acad. Sci. U.S.A.* 116, 15272–15281. doi: 10.1073/pnas.1907962116
- Villar-Cerviño, V., Abalo, X. M., Melendez-ferro, M., Perez-Costas, E., Holstein, G. R., Rodicio, M. C., et al. (2006). Presence of glutamate, glycine, and γ -aminobutyric acid in the retina of the larval sea lamprey: comparative Immunohistochemical study of classical Neurotransmitters in larval and postmetamorphic retinas. *Comp. Gen. Pharmacol.* 499, 810–827. doi: 10.1002/cne.21136
- Wicht, H., and Nieuwenhuys, R. (1998). "Hagfishes (Myxinoidea)," in *The Central Nervous System of Vertebrates*, Vol. 1, eds R. Nieuwenhuys, H. J. Ten Donkelaar, and C. Nicholson (Berlin: Springer Berlin Heidelberg), 497–549. doi: 10.1007/978-3-642-18262-4_11

- Wicht, H., and Northcutt, R. G. (1990). Retinofugal and retinopetal projections in the Pacific hagfish, *Eptatretus stouti* (Myxinoidea). *Brain Behav. Evol.* 36, 315–328. doi: 10.1159/000115317
- Wicht, H., and Northcutt, R. G. (1992). The forebrain of the Pacific hagfish: a cladistic reconstruction of the ancestral craniate forebrain. *Brain Behav. Evol.* 40, 25–64. doi: 10.1159/000108540
- Wicht, H., and Northcutt, R. G. (1993). Secondary olfactory projections and pallial topography in the Pacific hagfish, *Eptatretus stouti*. *J. Comp. Neurol.* 337, 529–542. doi: 10.1002/cne.903370402

Conflict of Interest: The author declares that the research was conducted in the absence of any commercial or financial relationships that could be construed as a potential conflict of interest.

Publisher's Note: All claims expressed in this article are solely those of the authors and do not necessarily represent those of their affiliated organizations, or those of the publisher, the editors and the reviewers. Any product that may be evaluated in this article, or claim that may be made by its manufacturer, is not guaranteed or endorsed by the publisher.

Copyright © 2021 Suzuki. This is an open-access article distributed under the terms of the Creative Commons Attribution License (CC BY). The use, distribution or reproduction in other forums is permitted, provided the original author(s) and the copyright owner(s) are credited and that the original publication in this journal is cited, in accordance with accepted academic practice. No use, distribution or reproduction is permitted which does not comply with these terms.