



# The Effect of Anlotinib Combined with anti-PD-1 in the Treatment of Gastric Cancer

Wubin Zheng<sup>†</sup>, Guoqiang Sun<sup>†</sup>, Zhitao Li<sup>†</sup>, Fan Wu, Guangshun Sun, Hongyong Cao\*, Jin Zhou\* and Yong Ma\*

Department of General Surgery, Nanjing First Hospital, Nanjing Medical University, Nanjing, Jiangsu, China

## OPEN ACCESS

### Edited by:

Qi Liu,  
Shanghai Cancer Center, Fudan  
University, China

### Reviewed by:

Alessandro Rizzo,  
Bari John Paul II Cancer Institute,  
National Cancer Institute Foundation  
(IRCCS), Italy  
Andrea Botticelli,  
Sapienza University of Rome, Italy

### \*Correspondence:

Hongyong Cao  
caohongy6167@163.com;  
Jin Zhou  
georgenjmu@163.com;  
Yong Ma  
yma0917@163.com

<sup>†</sup>These authors have contributed  
equally to this work.

### Specialty section:

This article was submitted to Surgical  
Oncology, a section of the journal  
Frontiers in Surgery

Received: 14 March 2022

Accepted: 29 March 2022

Published: 12 April 2022

### Citation:

Zheng W, Sun G, Li Z, Wu F, Sun G,  
Cao H, Zhou J and Ma Y (2022) The  
Effect of Anlotinib Combined with anti-  
PD-1 in the Treatment of Gastric  
Cancer.  
Front. Surg. 9:895982.  
doi: 10.3389/fsurg.2022.895982

**Background:** Protein tyrosine kinase (PTK) signaling pathway has been confirmed to be involved in the proliferation, differentiation and migration of tumor cells. Anlotinib, as a multi-target tyrosine kinase inhibitor, which can inhibit the expression of vascular endothelial growth factor receptor (VEGFR), has been confirmed to have significant therapeutic effects on non-small cell lung cancer, medullary thyroid carcinoma, and soft tissue sarcoma, but the therapeutic effect on gastric cancer (GC) is still unclear.

**Methods:** Anlotinib was screened out of 880 drugs through Cell Counting Kit 8 (CCK-8) technology. TCGA was used to detect the expression of VEGFR in GC, and Kaplan-Meier Plotter was used to analyze the correlation between the expression of VEGFR and the survival rate of GC patients. The impacts exerted by anlotinib to GC cell proliferating, migrating and invading processes were assessed through wound healing assay, transwell assay, and proliferation assay in vitro. In vivo experiments of GC were performed in C57/B6 mouse model to evaluate the function of anlotinib and PD-1 antibody.

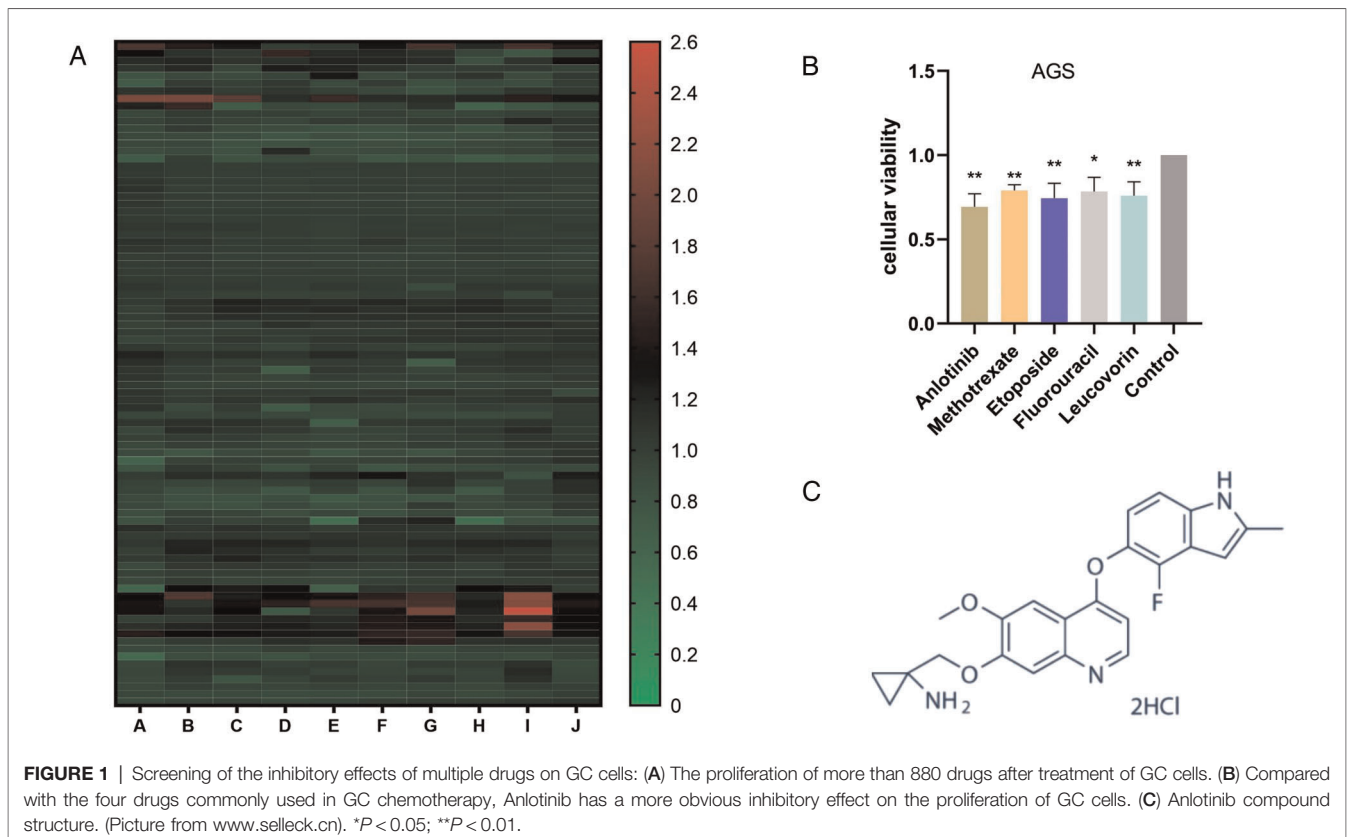
**Results:** It was found from more than compounds that anlotinib has a significant inhibitory effect on GC cells. In vitro experiments show that anlotinib can significantly inhibit the proliferation, invasion and proliferation of GC cells. The expression level of VEGFR is related to the prognosis and survival of GC. GC patients with low expression of VEGFR have better survival. Anlotinib can inhibit the expression of PD-L1, and achieve better therapeutic effects after combined with PD-1 antibody.

**Conclusion:** The present study reveals that anlotinib down regulates PD-L1. The combination of anlotinib and PD-1 monoclonal antibody is beneficial to GC therapy.

**Keywords:** anlotinib, gastric cancer, PD1, immunotherapy, VEGFR - vascular endothelial growth factor receptor

## INTRODUCTION

Gastric cancer (GC) is one of the most common malignant tumors worldwide, with the 5th highest incidence rate and the 3rd highest mortality rate among all malignant tumors, after lung cancer and liver cancer (1). Due to the insidious symptoms of GC, patients are often diagnosed with progressive or even advanced GC, and the survival period is extremely low. With the rapid

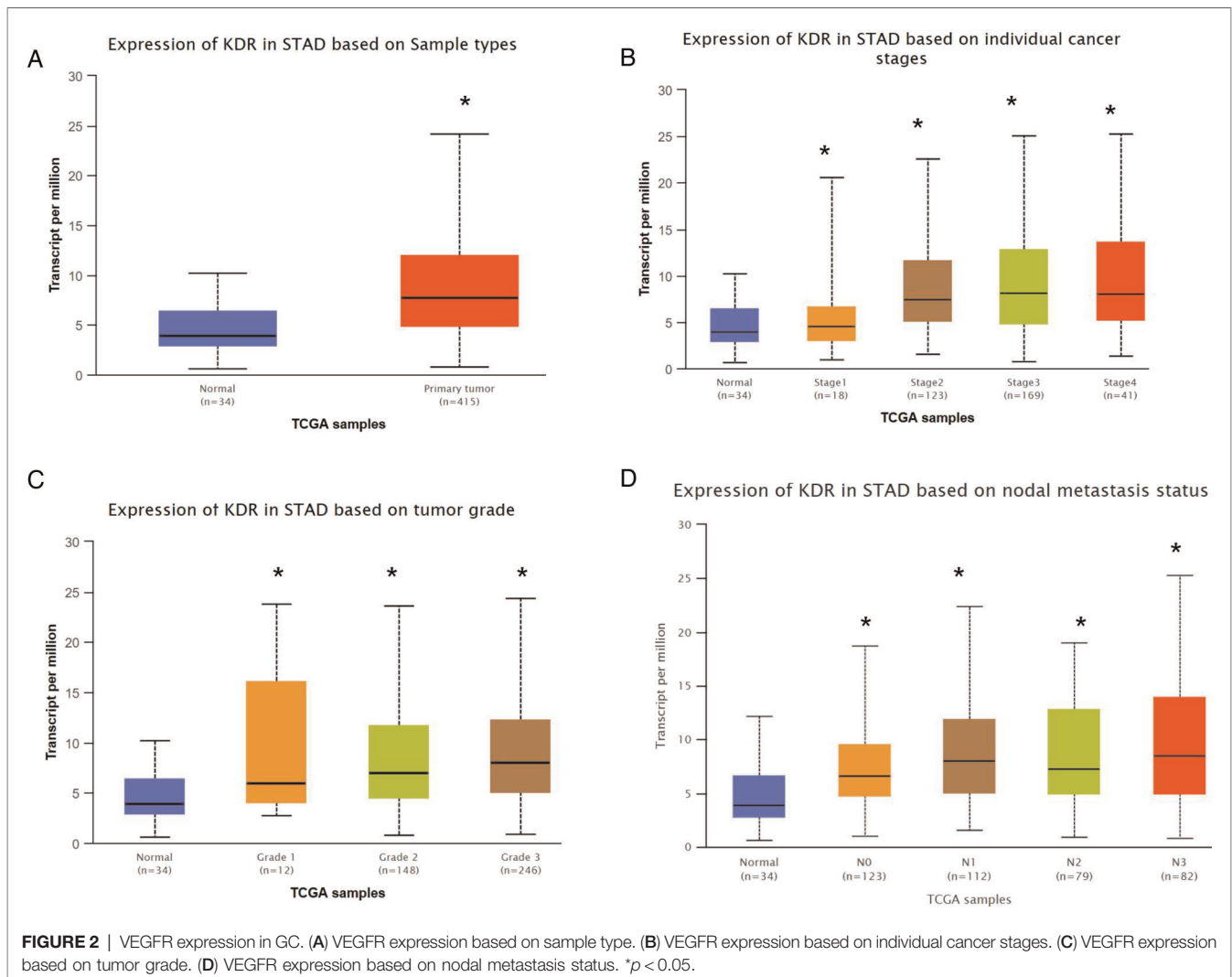


development of treatment technology in recent years, the survival rate of patients with progressive gastric cancer is only about 20% (2). To date, surgery is still the main treatment modality for GC, while for those without surgical indications or who need to be supplemented with chemotherapy before and after surgery. The current first-line chemotherapy for gastric cancer is fluorouracil in combination with platinum  $\pm$  epirubicin/docetaxel/irinotecan as recommended by the National Comprehensive Cancer Network (NCCN) in 2016. Nevertheless, the survival rate of GC patients is still extremely low, indicating that finding new and effective chemotherapeutic drugs to improve the treatment effect and prolong the survival rate of GC patients is still the top priority of gastric cancer treatment at present. In recent years, molecular targeted drugs have become a popular research topic because of their high efficiency and low toxicity in treating cancers such as breast, colorectal, thyroid, and non-small cell lung cancer. At the same time, TKIs plus immunotherapy have gradually been widely used in gastric cancer and other malignant tumors, and have received good feedback (3–5).

Tumor metastasis (especially peritoneum and liver) and hypoproteinemia are important factors affecting the survival of GC patients. The protein tyrosine kinase (PTK) signaling pathway is involved in the proliferation, differentiation and migration of tumor cells. Interfering or blocking the PTK

pathway can stop the growth of tumor cells and thus achieve therapeutic effects (6). Anlotinib is a multi-target tyrosine kinase inhibitor, an orally administered small molecule drug that exerts an inhibitory effect on tumor angiogenesis and tumor cell proliferation by selectively inhibiting vascular endothelial growth factor receptor (VEGFR), fibroblast growth factor receptor (FGFR) and platelet-derived growth factor receptor (PDGFR) (7). Current researches have demonstrated that anlotinib has significant therapeutic effects on non-small cell lung cancer, medullary thyroid cancer, and soft tissue sarcoma, significantly prolonging overall survival (OS) and progression-free survival (PFS) with the adverse effects were small (8–10). However, there is still a lack of evidence for the efficacy of this treatment in GC.

GC evades the immune system by down-regulating tumor expression, up-regulating immune checkpoints, inactivating cytotoxic T cells and altering the tumor immune microenvironment. Anti-tumor therapies that inhibit negative immunoregulatory mechanisms, namely immune check-point blockade (ICB), have become a hot topic of current research. The application of PD-1(programmed death 1)/PD-L1 (programmed death ligand 1) inhibitors to block the immune checkpoint is the most promising ICB therapy (11, 12). It has been reported that PD-1 /PD-L1 expression is detected abnormally in GC patients and is closely related to tumor progression and patient prognosis. The effectiveness of



anlotinib and PD-1 antibody in the treatment of GC is currently unclear, and further studies are needed to provide guidance for the clinical treatment of GC.

## MATERIALS AND METHODS

### Cell Cultures

Human GC cell lines (AGS, MKN-45) were provided by Shanghai Institutes for Biological Sciences in China. All cells were grown in a humidified incubator at 37°C with 5% CO<sub>2</sub> in RPMI-1640 medium (Biological Industries, Israel) containing 10% fetal bovine serum (Gibco, Austria) and 1% penicillin-streptomycin.

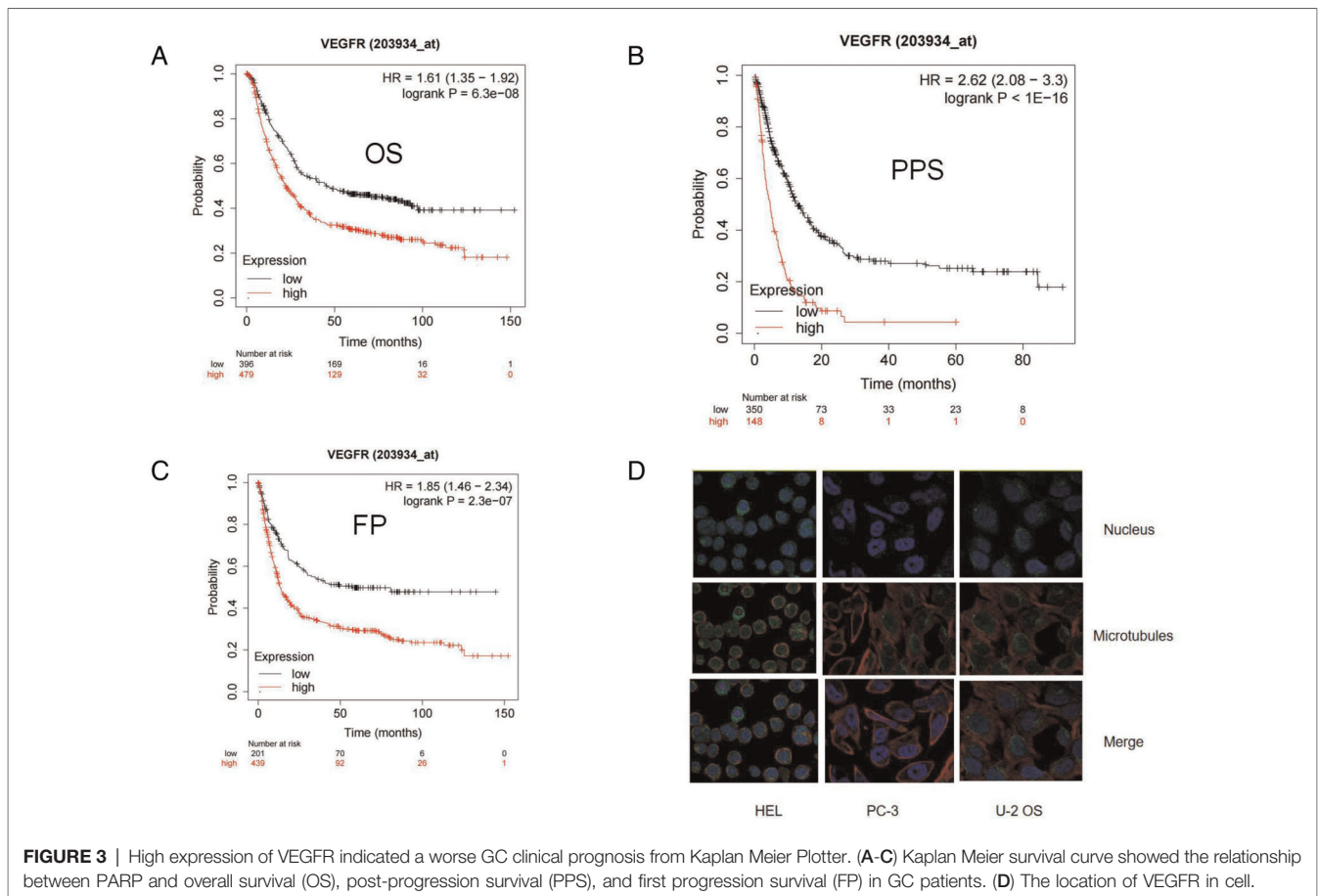
### Quantitative Reverse Transcription Polymerase Reaction (qRT-PCR)

Total RNAs from cells were extracted using TRIzol reagent (Invitrogen, USA) according to the manufacturer's instructions. Overall RNAs were reverse transcribed to cDNA

by a reverse transcription kit (Takara, Japan). We quantified PD-L1 mRNA and performed PCR assays based on the SYBR Green PCR kit (Takara, Japan) and based on a SYBR Green PCR Kit (RiboBio, China). Before calculating, the levels of mRNA expression status were normalized with GAPDH.

### VEGFR Expression Level Analysis and Clinicopathological Analysis

The expression of VEGFR in GC tissues and corresponding normal tissues was investigated using TCGAportal. VEGFR expression was compared in GC patients of various types, stages, grades, and nodal metastasis status using UALCAN. Kaplan-Meier Plotter was used to compare correlations between VEGFR expression and overall survival (OS), post-progression survival (PPS), and first progression survival (FP). Tumor Immune Single-cell Hub (TISCH) was used to provide detailed cell-type annotation at the single-cell level, enabling the exploration of TME across different cancer types including GC.



**FIGURE 3 |** High expression of VEGFR indicated a worse GC clinical prognosis from Kaplan Meier Plotter. (A-C) Kaplan Meier survival curve showed the relationship between PARP and overall survival (OS), post-progression survival (PPS), and first progression survival (FP) in GC patients. (D) The location of VEGFR in cell.

## Tools for VEGFR Location in Cells

The Human Protein Atlas, compiling numerous reports and tissue, cell and pathology atlas forms, and gene data in cells and tissues, was utilized for obtaining VEGFR location in cells.

## Tool for Immune-Related Analysis of VEGFR

TISIDB was adopted for delving into the spearman correlations between VEGFR and immune-modulator expression.

## Cell Counting Kit-8 Proliferation Assay

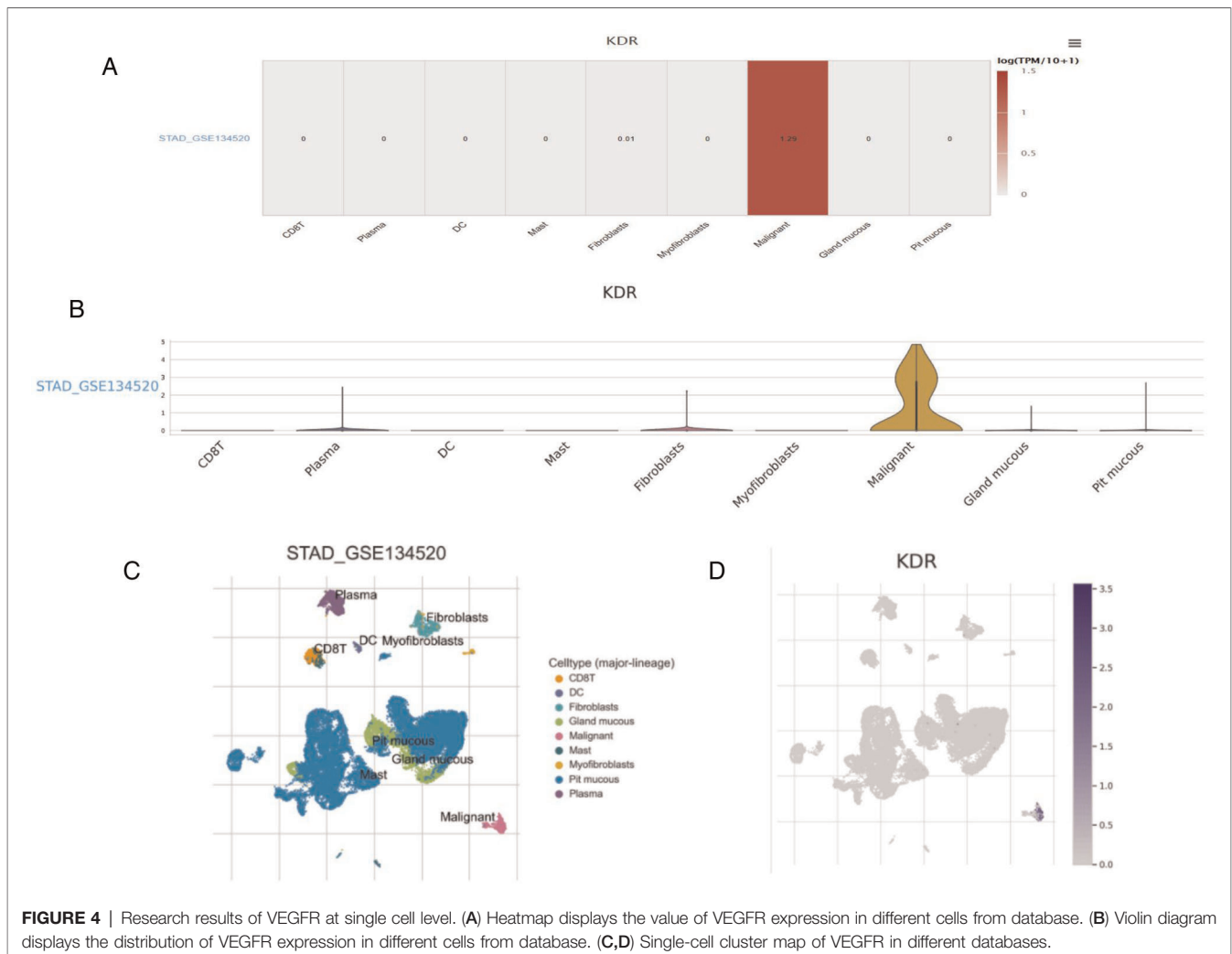
To detect the inhibitory effect of drugs on cell proliferation, researchers used the CCK-8 kit (Ribobio, China). Drug Screening: GC cells (2,000/well) were spread in 96-well plates and cultured for 24 h. The drug to be screened was added to each well at a concentration of 5  $\mu$ M. After a 24-hour incubation period in a humidified incubator at 37°C with 5% CO<sub>2</sub>, 10  $\mu$ l of CCK-8 reagent was added to each well and the incubation was continued for 2 h before the absorbance at 450 nm was measured using an enzyme marker. Selleck (USA) provided the drug to be screened as well as the anlotinib used in the assay.

## Wound Healing Assay

After the fusion of both AGS or MKN-45 cell lines reached 90%, artificial linear incisions were created with a standard 200  $\mu$ l pipette tip, washed twice with PBS to remove any free-floating cells and debris, and replaced with new medium. 5  $\mu$ M and 10  $\mu$ M of anlotinib were added to the medium and equal concentrations of dimethyl sulfoxide (DMSO) were added to the control group. The plates were incubated at 37°C with 5% CO<sub>2</sub> in a humidified incubator. At different time points (0 h, 24 h, 48 h), the wound healing within the scratch line was observed, and representative scratch lines were photographed.

## Transwell Assay

Anlotinib was added to the GC cell lines after they had reached 90% fusion, and equal concentrations of dimethyl sulfoxide (DMSO) were added to the control group. The plates were then placed in a humidified incubator at 37°C with 5% CO<sub>2</sub> for 24 h. Complete the inoculation of GC cell lines according to the manufacturer's instructions. The upper chamber was added with 200  $\mu$ l RPMI-1640 medium and 4 $\times$ 10<sup>6</sup> GC cells (with or without treatment with anlotinib) and the lower chamber was added with 700  $\mu$ l RPMI-1640 medium containing 10% fetal bovine serum as a chemotactic agent.



The upper chamber was fixed with formaldehyde and stained with 0.1% crystal violet for 15 min after 24 h of culture. Finally, under an inverted microscope, the treated cell lines were photographed and counted.

### Colony Formation Assay

AGS and MKN-45 cell lines were spread into six-well plates at a density of 1,000 cells/well, and they were treated with anlotinib, respectively, and equal concentrations of DMSO were added to the control group. The six-well plates were incubated for 14 days at 37°C with 5% CO<sub>2</sub> in a humidified incubator. The cell colonies were fixed using formaldehyde and stained with 0.1% crystal violet for 15 min. The colonies were photographed and counted. All assays were carried out in triplicate.

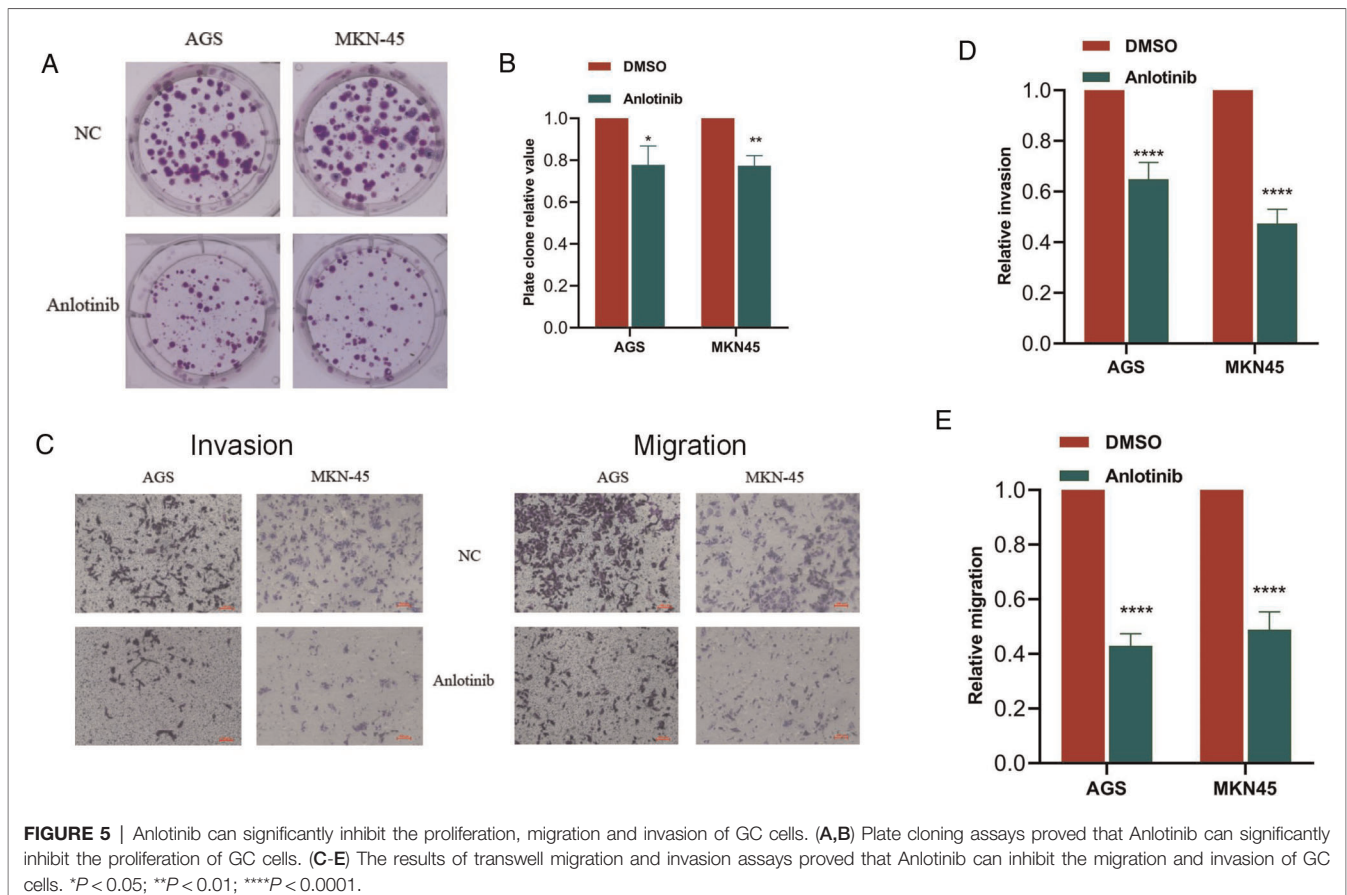
### Western Blotting

Abcam Corporation (UK) provided the anti-PD-L1 antibody. GADPH was obtained by lysing cells in RIPA lysis buffer (RIPA, Beyotime, China). The protrin blocked using 5% skim milk powder received the incubation using primary antibody,

anti-GADPH and anti-PD-L1, at 4°C for 12 h. After that, the synthesized membranes were incubated for 2 h with a secondary antibody (1:5,000). Lastly, with enhanced chemiluminescence kit (Pierce, USA). Image J was using to analyze the images of western blot, and the quantitative expression level of proteins were examined as the band-intensity.

### Mice Model

The animal experiment was approved by Nanjing Medical University's animal management committee, and all experiment procedures and animal caring conformed to the institutional ethics directions for animals-related experimental processes. For GC study, we conducted the random separation of 20 male C57/B6 mice aged 5 weeks in anlotinib, PD-1 monoclonal antibody (BP0273, bioxcell, USA), anlotinib+ PD-1 monoclonal antibody, PBS ( $n = 5$  for the respective group) in a range of MFC cells. In the mice inguen, MFC cells were injected subcutaneously. The researchers killed all the mice in



the experiment, collected tumor sizes and weighed tumors for further experimental tests.

## Statistical Analysis

We compared continuous information based on an individual  $t$ -experiment in the two groups. We carried out the analyses largely based on Graphpad Prism 8.0 (USA), and  $p$ -value  $< 0.05$  was reported with statistics-related significance.

## RESULTS

### Comprehensive High-Throughput Screening Shows that Anlotinib has a Significant Inhibitory Effect on GC Cells

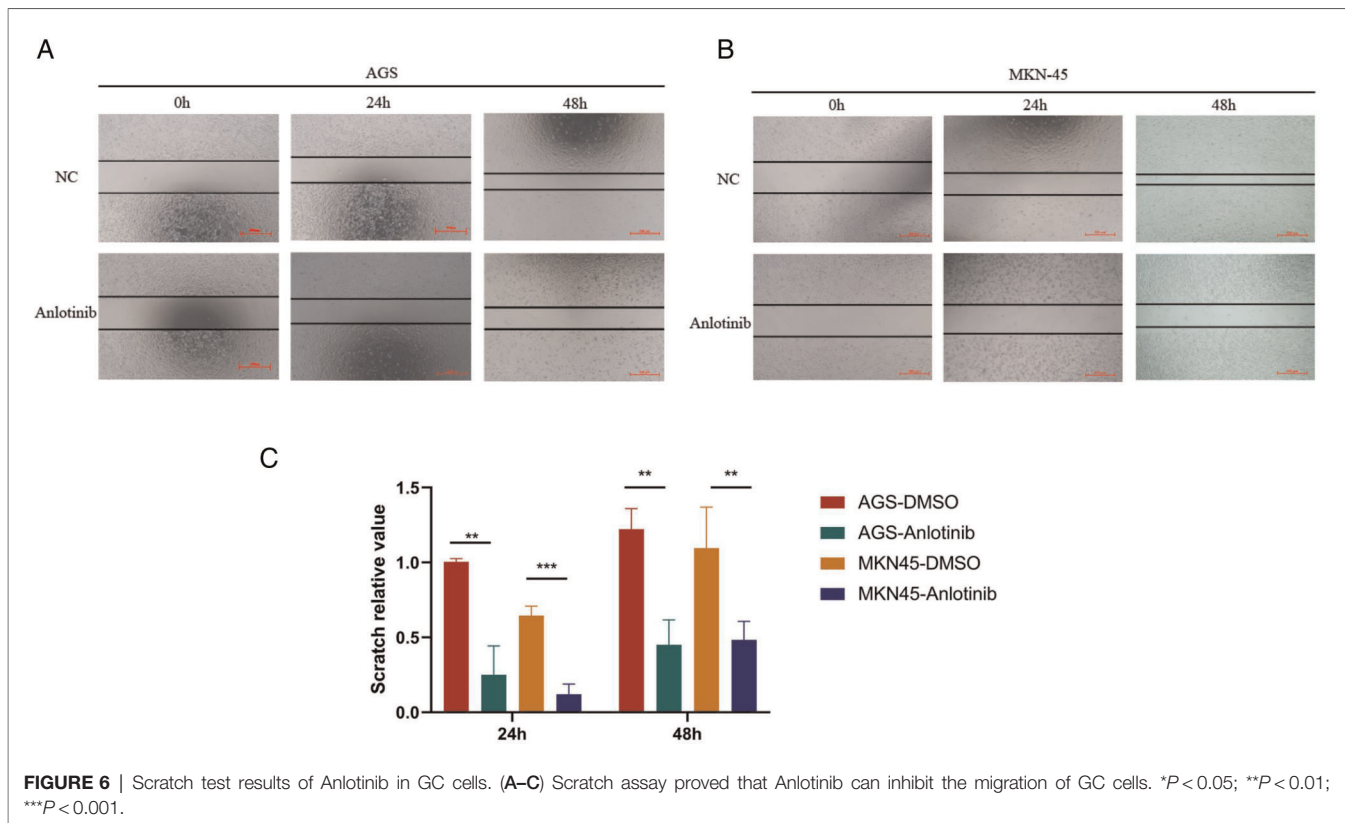
We used CCK-8 experiment to detect the cell proliferation efficiency of 880 kinds of drugs after drug treatment, and the experimental results found that anlotinib has obviously inhibitory effect on GC cell proliferation (Figure 1A). After the initial screening was completed, we used the same experiment to compare anlotinib with traditional gastric cancer chemotherapy drugs such as Methotrexate, Etoposide, Fluorouracil and Leucovorin. The cell proliferation results

indicated that anlotinib's inhibitory effect on GC cells is better than traditional drugs (Figure 1B). The structure of anlotinib is shown in the Figure 1C, and we decided to study the role of anlotinib in the treatment of GC.

### VEGFR is Significantly Correlated with Clinical Prognosis

To further explore the prognostic potential of VEGFR (the target of anlotinib) in GC, TCGA portal and Kaplan-Meier Plotter were used.

The TCGA portal showed that the expression of VEGFR in tumor tissues was obvious higher than that in normal tissues (Figure 2A). The expression level of VEGFR in different stages, tumor grades, or lymph node metastasis of individual cancer indicated that the expression level of VEGFR in GC tissues was also higher than normal tissues (Figures 2B–D). The prognostic potential of VEGFR in GC was further examined using Kaplan-Meier Plotter. The results showed that GC patients with higher VEGFR expression had lower overall survival (OS), post-progression survival (PPS), and first progression survival (FP) (Figures 3A–C).



## Research Results of VEGFR at Single Cell Level

We studied the expression of VEGFR at the single cell level. **Figures 4A,B** showed the distribution of VEGFR expression in GC database. In database GSE134520, the VEGFR was enriched at the malignant, fibroblasts, and plasma cell clusters (**Figures 4C,D**). These results suggest that VEGFR mainly function in malignant other than other cells. Moreover, according to the human protein atlas database, VEGFR is located in the cell membrane in cells (**Figure 3D**).

## Anlotinib Inhibits the Proliferation, Invasion and Migration of GC Cells

For gaining insights into the effects exerted by anlotinib on the biological behaviors of GC cells, we used anlotinib to treat GC cell lines including AGS and MKN-45 respectively. The results of plate cloning experiments show that anlotinib can inhibit the proliferation of GC cells (**Figures 3A,B**). The transwell assay revealed that anlotinib can significantly inhibit the invasion and migration potential of GC cells, compared with the untreated group (**Figures 5C–E**). At the same time, wound healing assay once again confirmed that in GC cell lines, the wound healing rate of GC cells treated with anlotinib was significantly lower than the control group (**Figures 6A–C**).

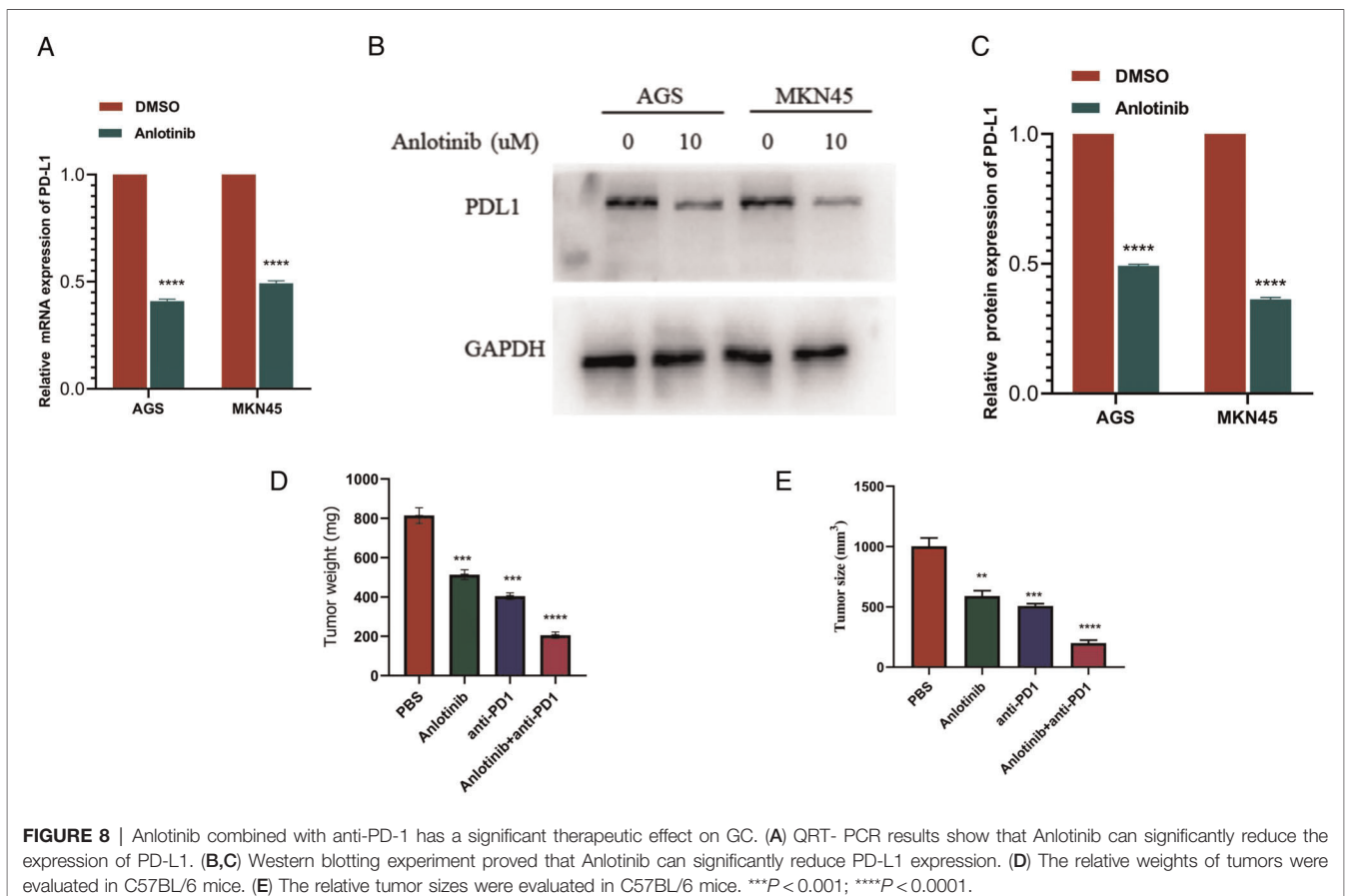
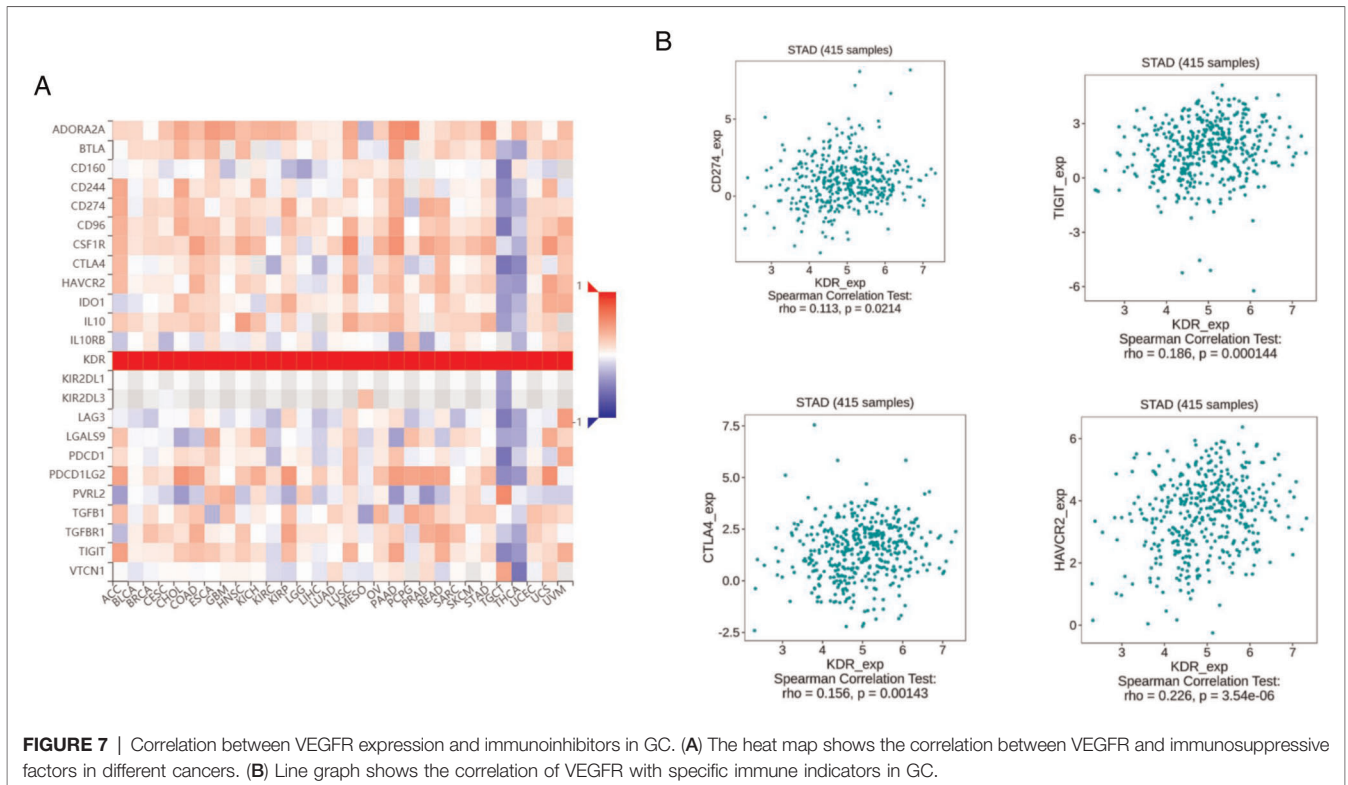
## VEGFR Expression was Correlated with Immune Factors

Existing studies have confirmed that the immune system is closely related to the occurrence and development of tumors. Therefore, we studied the relationship between the expression of VEGFR and immune factors. As shown in **Figures 7A,B**, there was a strong positive correlation between the expression of immunoinhibitors (CD274,TIGIT,CTLA4,HAVCR2) and the expression of VEGFR.

## The Combined use of Anlotinib and anti-PD-1 has a Significant Inhibitory Effect on GC Cells

Next, we needed to explore whether the effect of anlotinib on the expression of PD-L1 in GC cells is consistent with the above results.

QRT-PCR results showed that the expression of PD-L1 in GC cells treated with anlotinib was significantly lower than that in the control group (**Figure 8A**). Western blotting analysis results from the protein expression level suggested that anlotinib can significantly reduce the expression of PD-L1 relative to the control group (**Figures 8B,C**). To examine the association between anlotinib and the growth of GC in vivo, we injected MFC cells into subcutaneous groin of C57/B6 mice, and then we administered intraperitoneally anlotinib or





PD-1 antibody alone or in combination to mice and analyzed tumor growth in 20 days, as well as weight of tumors after the mice were killed. As indicated from the results, the combination group of anlotinib combined with PD-1 monoclonal antibody has a better inhibitory effect on tumors, compared with the single-drug group and the control group (Figures 8D,E).

## DISCUSSION

Although in the past few decades, the preoperative or postoperative chemotherapy regimen for GC has gradually been determined as fluorouracil combined with platinum  $\pm$  epirubicin/docetaxel/irinotecan, but the current five-year survival rate of GC patients is still low, and the five-year survival rate for advanced GC patients with tumor metastasis is lower. Therefore, researchers are still looking for better new and effective chemotherapeutics that can prolong the survival rate of patients and improve the treatment effect.

In the past five years, ICB therapy has revolutionized the treatment of some solid tumors or hematological tumors, and there are still multiple new studies, hoping that ICB therapy can be more widely used in other tumor treatment areas in the future (4, 5). TKIs combined with immunotherapy is a brand-new weapon for tumor treatment in recent years. This method has not only been used in the treatment of GC, but also widely used in other tumors, and the therapeutic effect has been gradually verified in the laboratory and clinical practice.

Anlotinib is a multi-target tyrosine kinase inhibitor, an oral small molecule drug that selectively inhibits vascular endothelial growth factor receptor, fibroblast growth factor receptor, platelet-derived growth factor receptor. It plays an important role in inhibiting tumor angiogenesis and tumor cell proliferation. Studies have shown that the antiangiogenic effect of anlotinib is comparable to Sunitinib and stronger than that of Sorafenib (13). In the past, anlotinib was only used in the fields of non-small cell lung cancer (14), medullary thyroid carcinoma (15), soft tissue sarcoma (16), and it has a good therapeutic effect. However, the effect of anlotinib on GC is still lacking researching. Immunotherapy is the current research hotspot in the field of tumor treatment. ICB therapy, especially PD-1/PD-L1 inhibitors, is the most promising treatment method among them. Carriluzumab is a classic PD-1 inhibitor that has been frequently used in clinical practice recently. A large part of patients with gastric cancer can detect the abnormal expression of PD-1/PD-L1, so the therapeutic effect of carriluzumab in GC is worthwhile expect. Li et al. (17) found that antiangiogenic drugs also play a regulatory role in suppressing immune signals, including the expression of PD-1 in tumor infiltrating T cells. In addition, several studies have suggested that antiangiogenic agents may increase the efficacy of immune checkpoint inhibitors, and the combination of two pathway inhibitors is often feasible (18, 19).

Our research first found that the inhibitory effect of anlotinib on GC cells is not inferior to that of classic GC chemotherapy

drugs through reasonable screening of a large number of drugs. Then, we used the TCGA public database to analyze and found that the low expression of VEGFR can significantly improve the prognosis of GC and prolong survival. In addition, according to Kaplan-Meier univariate survival analysis, we found that the OS, FP, and PPS of GC patients with low VEGFR expression were significantly longer than those with high VEGFR expression. The results of in vitro experiments can prove that anlotinib can significantly inhibit the proliferation and invasion of GC cells, and it is obviously concentration-dependent. The results of tumor formation experiments in mice prove that anlotinib has a significant therapeutic effect on tumor tissues, and it can significantly enhance the efficacy when used in combination with PD-1 monoclonal antibody.

However, our study of anlotinib still has certain limitations. First, we only found that anlotinib has a therapeutic effect on GC, but did not further explore the mechanism of the inhibitory effect. At the same time, the GC cell lines we selected in the cell experiment validation did not include HER2 negative, which cannot explain the therapeutic effect of anlotinib on HER2 negative GC. These will be reflected in the team's future research.

In conclusion, our study found that anlotinib, as a multi-target tyrosine kinase inhibitor, can significantly inhibit the proliferation and invasion of GC cells, and has a significant therapeutic effect on GC tumor tissues. Moreover, when used in combination with PD-1 inhibitors, anlotinib can significantly improve the efficacy. Our research may provide a new drug choice for the chemotherapy of GC.

## DATA AVAILABILITY STATEMENT

The datasets presented in this study can be found in online repositories. The names of the repository/repositories and accession number(s) can be found in the article/supplementary material.

## ETHICS STATEMENT

The animal study was reviewed and approved by Nanjing First Hospital.

## AUTHOR CONTRIBUTIONS

WZ completed the paper writing and experiments, GS, ZL, FW, GS completed the data analysis, HC, JZ, YM completed the experimental design and project support. All authors contributed to the article and approved the submitted version.

## FUNDING

This research was supported by Jiangsu Natural Science Foundation (SBK2019021253).

## REFERENCES

1. Sung H, Ferlay J, Siegel RL, Laversanne M, Soerjomataram I, Jemal A, et al. Global cancer statistics 2020: GLOBOCAN estimates of incidence and mortality worldwide for 36 cancers in 185 Countries. *CA Cancer J Clin.* (2021) 71(3):209–49. doi: 10.3322/caac.21660
2. Jaberi MK, Gholami A, Cheraghian B, Abolghasemi J, Solaymani-Dodaran M, Madani AH, et al. Survival rate of patients with gastric cancer in Hormozgan Province, Iran. *Med J Islam Repub Iran.* (2019) 33:74. doi: 10.34171/mjiri.33.74
3. Ricci AD, Rizzo A, Rojas Llimpe FL, Di Fabio F, De Biase D, Rihawi K. Novel HER2-directed treatments in advanced gastric carcinoma: anotHER paradigm shift? *Cancers (Basel).* (2021) 13(7):1664. doi: 10.3390/cancers13071664
4. Rizzo A, Brandi G. Biochemical predictors of response to immune checkpoint inhibitors in unresectable hepatocellular carcinoma. *Cancer Treat Res Commun.* (2021) 27:100328. doi: 10.1016/j.ctarc.2021.100328
5. Rizzo A, Dadduzio V, Ricci AD, Massari F, Di Federico A, Gadaleta-Caldarola G, et al. Lenvatinib plus pembrolizumab: the next frontier for the treatment of hepatocellular carcinoma? *Expert Opin Investig Drugs.* (2021) 30:1–8. doi: 10.1080/13543784.2021.1948532
6. Power DG, Kelsen DP, Shah MA. Advanced gastric cancer—slow but steady progress. *Cancer Treat Rev.* (2010) 36(5):384–92. doi: 10.1016/j.ctrv.2010.01.005
7. Lin B, Song X, Yang D, Bai D, Yao Y, Lu N. Anlotinib inhibits angiogenesis via suppressing the activation of VEGFR2, PDGFRbeta and FGFR1. *Gene.* (2018) 654:77–86. doi: 10.1016/j.gene.2018.02.026
8. Sun Y, Niu W, Du F, Du C, Li S, Wang J, et al. Safety, pharmacokinetics, and antitumor properties of Anlotinib, an oral multi-target tyrosine kinase inhibitor, in patients with advanced refractory solid tumors. *J Hematol Oncol.* (2016) 9(1):105. doi: 10.1186/s13045-016-0332-8
9. Shen G, Zheng F, Ren D, Du F, Dong Q, Wang Z, et al. Anlotinib: a novel multi-targeting tyrosine kinase inhibitor in clinical development. *J Hematol Oncol.* (2018) 11(1):120. doi: 10.1186/s13045-018-0664-7
10. Han B, Li K, Wang Q, Zhang L, Shi J, Wang Z, et al. Effect of anlotinib as a third-line or further treatment on overall survival of patients with advanced non-small cell lung cancer: the ALTER 0303 phase 3 randomized clinical trial. *JAMA Oncol.* (2018) 4(11):1569–75. doi: 10.1001/jamaoncol.2018.3039
11. Lote H, Cafferkey C, Chau I. PD-1 and PD-L1 blockade in gastrointestinal malignancies. *Cancer Treat Rev.* (2015) 41(10):893–903. doi: 10.1016/j.ctrv.2015.09.004
12. Garon EB, Rizvi NA, Hui R, Leigh N, Balmanoukian AS, Eder JP, et al. Pembrolizumab for the treatment of non-small-cell lung cancer. *N Engl J Med.* (2015) 372(21):2018–28. doi: 10.1056/NEJMoa1501824
13. Wang J, Zhao Y, Wang Q, Zhang L, Shi J, Wang Z, et al. Prognostic factors of refractory NSCLC patients receiving Anlotinib hydrochloride as the third- or further-line treatment. *Cancer Biol Med.* (2018) 15(4):443–51. doi: 10.20892/j.issn.2095-3941.2018.0158
14. Han BH, Li K, Wang QM, Zhang L, Shi J, Wang Z, et al. Effect of anlotinib as a third-line or further treatment on overall survival of patients with advanced non-small cell lung cancer the ALTER 0303 phase 3 randomized clinical trial. *JAMA Oncol.* (2018) 4(11):1569–75. doi: 10.1001/jamaoncol.2018.3039
15. Sun Y, Du F, Gao M, Ji Q, Li Z, Zhang Y, et al. Anlotinib for the treatment of patients with locally advanced or metastatic medullary thyroid cancer. *Thyroid.* (2018) 28(11):1455–61. doi: 10.1089/thy.2018.0022
16. Chi Y, Fang Z, Hong X, Yao Y, Sun P, Wang G, et al. Safety and efficacy of anlotinib, a multikinase angiogenesis inhibitor, in patients with refractory metastatic soft-tissue sarcoma. *Clin Cancer Res.* (2018) 24(21):5233–8. doi: 10.1158/1078-0432.CCR-17-3766
17. Li B, Lalani AS, Harding TC, Luan B, Koprivnikar K, Huan Tu G, et al. Vascular endothelial growth factor blockade reduces intratumoral regulatory T cells and enhances the efficacy of a GM-CSF-secreting cancer immunotherapy. *Clin Cancer Res.* (2006) 12(22):6808–16. doi: 10.1158/1078-0432.CCR-06-1558
18. Assi HI, Kamphorst AO, Moukalled NM, Ramalingam SS. Immune checkpoint inhibitors in advanced non-small cell lung cancer. *Cancer.* (2018) 124(2):248–61. doi: 10.1002/cncr.31105
19. Furue M, Ito T, Wada N, Wada M, Kadono T, Uchi H. Melanoma and immune checkpoint inhibitors. *Curr Oncol Rep.* (2018) 20(3):29. doi: 10.1007/s11912-018-0676-z

**Conflict of Interest:** The authors declare that the research was conducted in the absence of any commercial or financial relationships that could be construed as a potential conflict of interest.

**Publisher's Note:** All claims expressed in this article are solely those of the authors and do not necessarily represent those of their affiliated organizations, or those of the publisher, the editors and the reviewers. Any product that may be evaluated in this article, or claim that may be made by its manufacturer, is not guaranteed or endorsed by the publisher.

Copyright © 2022 Zheng, Sun, Li, Wu, Sun, Cao, Jin and Ma. This is an open-access article distributed under the terms of the Creative Commons Attribution License (CC BY). The use, distribution or reproduction in other forums is permitted, provided the original author(s) and the copyright owner(s) are credited and that the original publication in this journal is cited, in accordance with accepted academic practice. No use, distribution or reproduction is permitted which does not comply with these terms.