



Nation-Wide Viral Sequence Analysis of HIV-1 Subtype B Epidemic in 2003–2012 Revealed a Contribution of Men Who Have Sex With Men to the Transmission Cluster Formation and Growth in Japan

Teiichiro Shiino^{1*}, Atsuko Hachiya², Junko Hattori², Wataru Sugiura^{2,3} and Kazuhisa Yoshimura^{3,4} on behalf of The Japanese Drug Resistance HIV Surveillance Network

¹ Surveillance and Information Division, Infectious Disease Surveillance Center, National Institute of Infectious Diseases, Tokyo, Japan, ² Division of Biological Information Analysis, Department of Clinical Research Management, Critical Research Center, National Hospital Organization Nagoya Medical Center, Nagoya, Japan, ³ AIDS Research Center, National Institute of Infectious Diseases, Tokyo, Japan, ⁴ Research Institute Director, Tokyo Metropolitan Institute of Public Health, Tokyo, Japan

OPEN ACCESS

Edited by:

Kok Keng Tee,
University of Malaya, Malaysia

Reviewed by:

Yuh Koon Tong,
Sunway University, Malaysia
Lyle McKinnon,
University of Manitoba, Canada

*Correspondence:

Teiichiro Shiino
tshiino@niid.go.jp

Specialty section:

This article was submitted to
HIV and STIs,
a section of the journal
Frontiers in Reproductive Health

Received: 25 May 2020

Accepted: 10 November 2020

Published: 03 December 2020

Citation:

Shiino T, Hachiya A, Hattori J, Sugiura W and Yoshimura K (2020) Nation-Wide Viral Sequence Analysis of HIV-1 Subtype B Epidemic in 2003–2012 Revealed a Contribution of Men Who Have Sex With Men to the Transmission Cluster Formation and Growth in Japan. *Front. Reprod. Health* 2:531212. doi: 10.3389/frph.2020.531212

Background: To better understand the epidemiology of human immunodeficiency virus type 1 (HIV-1) subtype B transmission in Japan, phylodynamic analysis of viral *pol* sequences was conducted on individuals newly diagnosed as HIV-1 seropositive.

Methodology: A total of 5,018 patients newly diagnosed with HIV-1 infection and registered in the Japanese Drug Resistance HIV Surveillance Network from 2003 to 2012 were enrolled in the analysis. Using the protease-reverse transcriptase nucleotide sequences, their subtypes were determined, and phylogenetic relationships among subtype B sequences were inferred using three different methods: distance-matrix, maximum likelihood, and Bayesian Markov chain Monte Carlo. Domestically spread transmission clusters (dTCs) were identified based on the following criteria: >95% in interior branch test, >95% in Bayesian posterior probability and <10% in depth-first searches for sub-tree partitions. The association between dTC affiliation and individuals' demographics was analyzed using univariate and multivariate analyses.

Results: Among the cases enrolled in the analysis, 4,398 (87.6%) were classified as subtype B. Many of them were Japanese men who had sex with men (MSM), and 3,708 (84.3%) belonged to any of 312 dTCs. Among these dTCs, 243 (77.9%) were small clusters with <10 individuals, and the largest cluster consisted of 256 individuals. Most dTCs had median time of the most recent common ancestor between 1995 and 2005, suggesting that subtype B infection was spread among MSMs in the second half of the 1990s. Interestingly, many dTCs occurred within geographical regions. Comparing with singleton cases, TCs included more MSM, young person, and individuals with high CD4+ T-cell count at the first consultation. Furthermore, dTC size was significantly correlated with gender, age, transmission risks, recent diagnosis and relative population size of the region mainly distributed.

Conclusions: Our study clarified that major key population of HIV-1 subtype B epidemic in Japan is local MSM groups. The study suggests that HIV-1 subtype B spread via episodic introductions into the local MSM groups, some of the viruses spread to multiple regions. Many cases in dTC were diagnosed during the early phase of infection, suggesting their awareness to HIV risks.

Keywords: HIV-1, subtype B, transmission cluster, risk population, MSM, phylogenetic analysis

INTRODUCTION

Identifying geographical and/or temporal prevalence of a viral transmission, the transmission cluster (TC), gives important information in preventing the spread of infections. Spatio-temporal statistical analyses (1, 2) are generally used to identify a disease cluster, which may not directly represent the transmission of an infectious agent. Another approach in identifying TC is through social network surveillance using aggressive field epidemiological surveillance. However, this is ethically difficult in HIV/Acquired Immunodeficiency Syndrome (AIDS) because of privacy issues. Viral sequence-based inference of TCs is a realistic and ideal alternative method to social network surveillance, elucidating an accumulation of HIV transmission events at a local region. Recent progress in bioinformatics allows more detail of such kind of study.

In Japan, HIV/AIDS registration system started in 1984, requiring physicians to report all diagnosed cases. Since the first HIV-1 infected case in Japan reported in 1985, the total number of reported cases has been increasing annually, reaching to 27,443 at the end of 2017 (3). Approximately 30% represent AIDS cases at diagnosis, and the proportion has not been decreased over the last decade, suggesting the need of more effective preventive measures. Since 73% of newly reported cases were associated with men who had sex with men (MSM) including bisexual contacts (3), MSM is the key population in Japan like many other high- and middle-income countries (4, 5). Thus, to decrease the number of persons who do not know their HIV status in Japan, we need to know HIV transmission dynamic in the MSM key population. Although most Japanese sero-positive MSMs were known to be infected with HIV-1 subtype B (6, 7), how subtype B viruses were introduced and spread among MSM population in Japan remains to be elucidated. C:\Users\tshiino\Documents\GetARef\Refs\myref.ref #131.

We have been collecting viral nucleotide sequence data from newly diagnosed individuals as the Japanese Drug Resistance HIV Surveillance Network (6, 8, 9), which covers more than 40% of HIV-1 cases officially reported in Japan. This allowed us to estimate nation-wide transmission dynamics of the subtype B virus in Japan using phylodynamic approach to the large-scale sequence and demographic information from the surveillance. In this paper we identified subtype B viruses were simultaneously spread in >300 domestically expanding TCs, which were introduced in Japan from the 1990's to 2000's. TCs with many individuals, which were episodic transmitting groups of people living with HIV/AIDS (PLWHA), were composed of MSM.

Large TCs consisted of individuals in the same geographic region, of young age and who were diagnosed early. These results provide epidemiological information which may support preventive strategies involving public health interventions to reduce new HIV transmissions in key populations in Japan.

MATERIALS AND METHODS

Ethics Statement

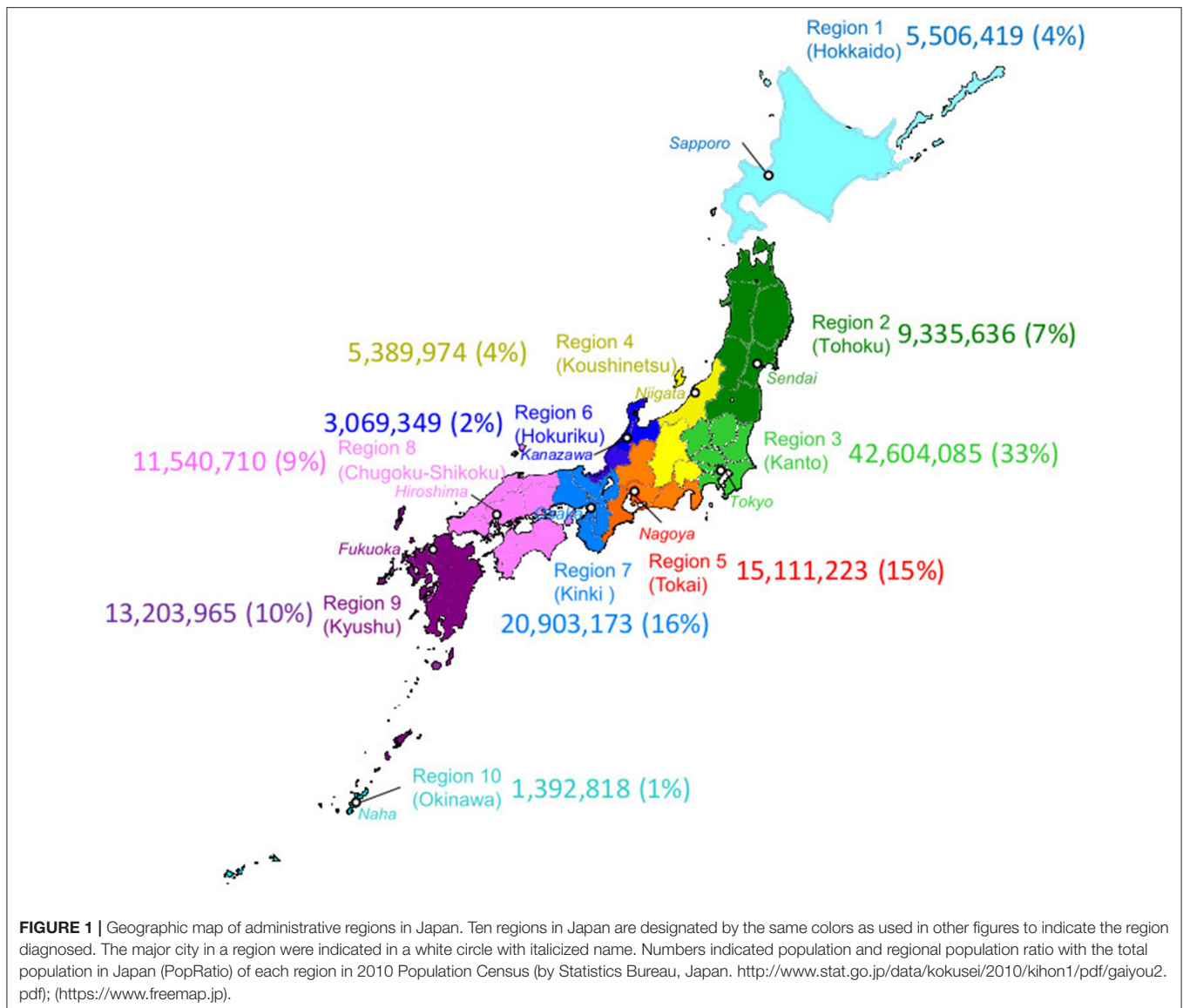
This study was conducted according to the principles in the Declaration of Helsinki. The study was approved by the human subject research committee at the National Institute of Infectious Diseases and National Hospital Organization Nagoya Medical Center, Japan (Approved no. 2010-310). All patients provided written informed consent for the collection of samples and subsequent analyses.

Study Subjects

The Japanese Drug Resistance HIV Surveillance Network (6, 8, 9) enrolled 5,922 newly diagnosed and ART naïve PLWHAs between January 2003 and December 2012 at 30 clinics and public health centers located in one of the ten administrative regions in Japan (Figure 1). The patient's peripheral blood was drawn into a vacutainer with EDTA added at diagnosis or the earliest hospital visit. The CD4+ T-cell count and the HIV viral load (VL) were also collected for the surveillance where available. Among these cases, 5,018 possessing the nucleotide sequence information of HIV-1 protease (PR: 297bp) and the 1- to 240-amino acid region of reverse-transcriptase (RT: 720bp) (HXB2:2253-3269) using the direct sequencing method of RT-PCR products from the patients' plasma samples were subjected to the following analyses. The detailed methods for CD4+ T-cell count, VL, RT-PCR and nucleotide sequencing were described in the previous reports (6, 8–10).

Subtype Identification and Selection of Subtype B-Infected Cases

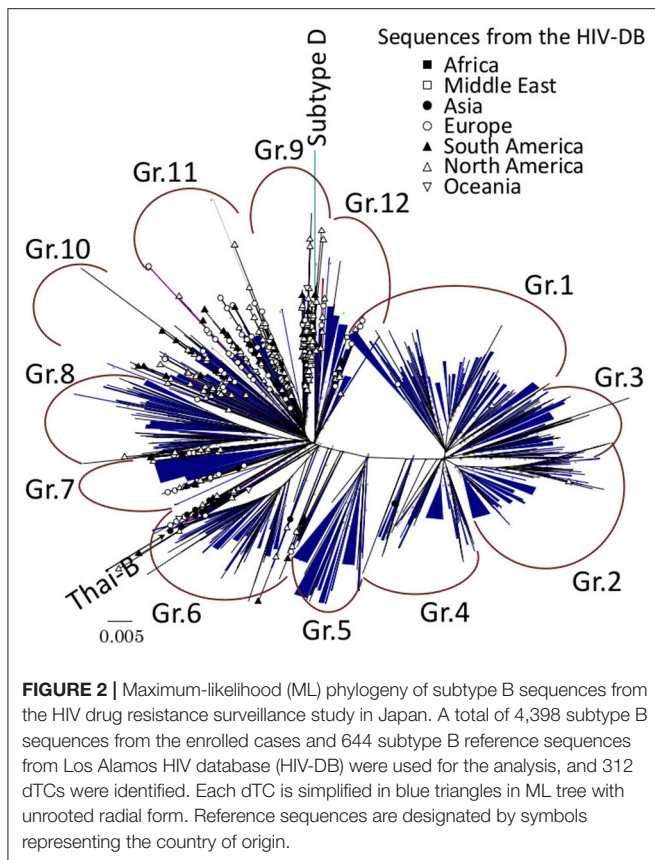
Nucleotide sequences of PR and RT genes were concatenated and aligned with subtype reference alignment set of HIV-1 M group with CRF01_AE, CRF02_AG, CRF07_BC, and CRF08_BC in the Los Alamos HIV database (<http://www.hiv.lanl.gov/content/sequence/NEWALIGN/align.html>) using MUSCLE (11) built in MEGA7 (12). Subtypes were determined by this alignment using similarity plot analysis against subtype reference by estimating the number of substitution using Tamura-Nei (TN93) model (13) by in-house program written in Perl5, and 4,398 samples of entirely subtype B were selected for the further analyses.



Phylogenetic Analysis for Identification of Domestically Spread TCs (dTCs)

We define dTCs as a monophyletic group without paraphyletic foreign outlier, and sharing less diversified viral sequences as described in the previous report (10). First, a primary guide tree was constructed using 4,398 subtype B cases which determined 12 phylogenetically divergent groups (Gr.1 to Gr.12 in **Figure 2**). Second, in order to detect an ancestral node of each case introduced in Japan in the phylogeny, we selected a representative sequence from each group and searched the Los Alamos HIV database for the similar references of the group representative using BLAST and yielded top 100 similar entries. From them, we excluded entries without collection years and collected in Japan, and finally obtained 51–82 reference sequences which did not diverge from the group. The total number of reference sequences was 644 due to duplications of entries between groups. Reference sequences were re-aligned with the sample sequence

and four subtype D outliers, 01CM_4412HAL, 94UG114, A280, and ELI. Then, ambiguous loci containing multiple peaks of nucleotides were converted to a plausible one using the method described in the previous report (10). To eliminate the influence of antiretroviral drug treatments on viral evolution, we removed 43 drug resistance-associated codons defined in the previous studies (6, 8). From those alignments, we constructed phylogenies inferred by 3 different methods: neighbor-joining (NJ) method, maximum likelihood (ML) method, and Bayesian Markov chain Monte Carlo method. According to the results of the interior branch test (14) with 1,000 bootstrap resampling (15), Felsenstein's bootstrap test (16) with 1,000 resampling, or posterior probability of Bayesian analysis (17), we searched in depth-first manner for significant monophyletic groups including sample sequences from the phylogeny. In this step, a paraphyletic overlapping the foreign reference sequence was regarded as a splitter except for singleton or cluster of foreign



reference sequence(s) without a significant branch. NJ, ML, and substitution model selection were conducted using MEGA7 (12). Bayesian maximum clade credibility (BMCC) chronological trees were inferred using BEAST 1.8 (18). According to the model selection (**Supplementary Table 2**), we applied TN93 and the general time reversible model with gamma-distributed site heterogeneity and invariant sites (GTR+G+I) to infer NJ and ML or BMCC trees, respectively. To evaluate the diversity-based criterion, we measured median sub-tree nucleotide diversity of each cluster candidate as described in the previous reports (10, 19). Eventually, only the monophyletic groups fulfilling all those criteria were recognized as dTCs. Median time of the most recent common ancestor (tMRCA) were also inferred using BEAST 1.8 with the exact date of samples collected. Models for the clock and population were evaluated in each group by log marginal likelihood estimation using path sampling and stepping-stone sampling (20, 21) in BEAST 1.8 (**Supplementary Table 3**).

BED Assay

Whether the HIV-1 seroconversion occurred recently (within 6 months) was estimated using the BED IgG-Capture Enzyme immunoassay (BED assay, Calypta HIV-1 BED Incidence EIA, BioRad) as described previously (6, 9). To reduce overestimation of the recent incidence (22), we excluded the cases having <50 CD4+ T cells/ μ L or HIV RNA level of <1,000 copies/ml. Briefly, 101 \times diluted plasma samples were used to microplate wells in the

kit and prepared according to the manufacturer's instructions. To obtain normalized optimal density values (ODn), each reading at 450 nm wavelength was validated using controls and calibration to decrease run-to-run variability. Cases with ODn of ≤ 0.8 were interpreted as "recent" seroconverters and ODn of >0.8 as "not recent" seroconverters.

Statistical Analysis

Association between demographic characteristics and dTCs was tested by Fisher's exact probability. Multivariate logistic regression analysis was performed for four parametric variables, "age," "regional population ratio with the total population in Japan (PopRatio: see **Figure 1**)," "CD4+ cell count," and "VL," on individuals into dTC. Association between parametric and categorical variables of each case and the dTC was analyzed by multivariate logistic regression and multiple regression analyses using dummy variables by Hayashi's quantification method type I (23), respectively. Difference on CD4+ T-cell counts or viral RNA levels of each sample between dTC and singleton was assessed using Mann-Whitney U test. Trends in the geographical distribution of each dTC were analyzed by hierarchical clustering Ward's method. All statistical analyses were calculated using R version 3.4.1.

RESULTS

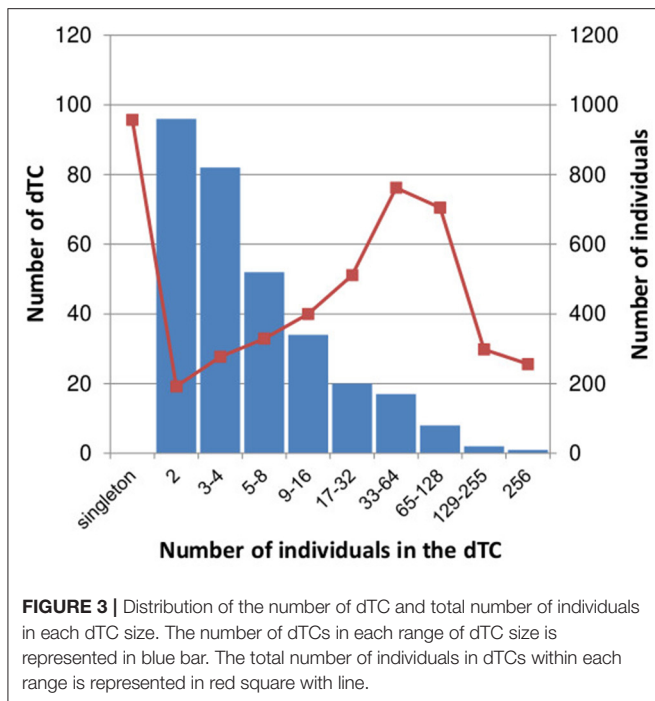
The Majority of Cases Were Japanese MSM Infected With Subtype B HIV-1

Among the 5,018 cases collected from 2003 to 2012, 4,398 (87.6%) were determined as subtype B by phylogenetic analysis. Remaining 620 cases were classified into CRF01_AE ($n = 358$: 7.1%), C ($n = 49$), CRF02_AG ($n = 29$), G ($n = 22$), F ($n = 9$), CRF06_cpx ($n = 3$), CRF07_BC ($n = 2$), CRF12_BF ($n = 2$), CRF33_01B ($n = 2$), D ($n = 1$), CRF08_BC ($n = 1$), and CRF28/29_BF ($n = 1$). There were 141 unclassified cases which did not match with any of the known subtype/CRF patterns, suggesting unidentified intra-subtype recombinants.

Of 4,398 subtype B-infected individuals, 65.2% reported male to male and/or bisexual sexual contacts (**Supplementary Table 1**). While majority were Japanese cases among the cases where nationality is obvious (96.2%), 167 individuals originated from other countries, where Asian ($n = 54$: 1.23%) and South American ($n = 47$: 1.07%) countries were prevalent. Only 60 individuals were women (1.4%), and the number of men with heterosexual risk ($n = 381$) was 7-fold higher than that of women ($n = 54$). The median age of individuals at diagnosis was 36.05 years with 29.9 and 43.1 years as the first and the third quartiles, respectively. Majority of collected cases ($n = 3,904$; 88.8%) were reported from any of three metropolitan areas in Japan, Kanto, Kinki or Tokai region. No demographical differences were observed according to gender, risk factor and nationality among the three regions.

312 Domestically Spread TCs Were Determined

Of 4,398 subtype B cases, 3,714 (84.4%) were clustered into 312 dTCs with at least one potential partner (**Figure 2**), whereas 684



remaining cases did not belong to any dTCs, i.e., singletons. dTCs were numbered according to the descending number of cases. A distribution of the size and frequencies of dTC is summarized in **Figure 3**, where the dTCs including ≥ 20 individuals ($dTC_{\geq 20}$) was 44 (14% of total number into dTCs), and the largest one (TC1) included 256 individuals. Total number of individuals included in all $dTC_{s \geq 20}$ were 2,441, being 55.5% of the total population (**Figure 3**). The number of the individuals included for each TC size range showed a bell-shaped distribution with a maximum at 32–63 ($n = 762$) (**Figure 3**).

MSM Was the Major Transmission Risk in $dTC_{\geq 20}$

Approximately 60 and 45% of cases with MSM-declared individuals were involved in dTCs and the singleton group, respectively (**Table 1A**). Furthermore, 97.6% (3,625) of dTC affiliating cases were men while 68.8% in the singletons. **Figures 4A,B** showed phylogenetic trees of two large dTCs with characteristics, TC001 being the largest one, and TC004 originating from individuals in Korea. The trees included both subclusters consisting of the genetically closely related viruses with the similar collection years and parts where the viruses from different collection years are connected by long branches. Many of the other dTCs showed the same trend. Although some $dTC_{\geq 20}$ included individuals who reported their risks as heterosexual contacts, phylogenetic analysis showed that their viruses were closely related to that of MSM and no potential female partners were found (**Figure 4**). Since $dTC_{\geq 20}$ contained a few foreign and/or non-sexual contact cases, such individuals were not the key player to structure the $dTC_{\geq 20}$. In contrast, non-MSM risks were occasionally observed in small dTCs.

Indeed, heterosexual contact was estimated as the major risk in six dTCs ($n = 5, 4$, and four pairs), and intravenous drug usage was identified in one female pair. Thus, dTC analysis clarified that the major transmission risk of subtype B-infected patients constituting $dTC_{\geq 20}$ in Japan were Japanese MSMs including bisexuality.

$dTC_{\geq 20}$ Showed the Region Specificity

According to their geographic region of diagnosis, $dTC_{\geq 20}$ can be classified into five categories (**Figure 5**). Each category shared a most prevalent region of the infection, i.e., 28 $dTC_{\geq 20}$ in Kanto (Region 3), 9 $dTC_{\geq 20}$ in Tokai (Region 5), 5 $dTC_{\geq 20}$ in Kinki (Region 7), 1 $dTC_{\geq 20}$ in Hokkaido (Region 1), and 1 $dTC_{\geq 20}$ in Kyushu (Region 9). $dTC_{\geq 20}$ made some sub-clusters among the categories depending on the second and third prevalence. These region specificities demonstrated the presence of major endemic regions where the virus was transmitted locally. Most of $dTC_{\geq 20}$ had tMRCA between the late 1980's to early 1990's, which did not differ significantly among the major endemic regions of $dTC_{\geq 20}$ (**Figure 6**). In contrast, few small dTCs and no pair cases had tMRCA before 1990.

dTC tended to include early diagnosed cases in young and sexually infected male from urban region were consistent of young and early staged cases

Cases in dTC included younger and recently diagnosed individuals compare to singleton cases (**Table 1A**). Individuals' age and the size of the dTC demonstrated a positive correlation in semi-log linear regression analysis (Adj. $R^2 = 0.002$, $F = 10.17$, $p = 0.001$). CD4+ T-cell count distribution in cases clustered into dTC slightly drifted to higher levels compared to that of singletons ($p = 8.9 \times 10^{-6}$, **Figure 7**). However, the frequency of individuals diagnosed with advanced disease (CD4+ T-cell count < 400 and/or VL $> 10^4$) did not correlate with the dTC sizes. In univariate analysis, clustered cases were more likely to be men, MSM, or bisexual, and recently diagnosed, but were not associated with their nationality (**Table 1A**). In multivariate analysis, in which (Age*PopRatio)+CD4+VL was recommended as the best logistic regression model by Akaike's Information Criterion (AIC) in both ≥ 10 ($dTC_{\geq 10}$) and ≥ 20 ($dTC_{\geq 20}$) thresholds of dTC size (**Supplementary Table 3**), Age and PopRatio were negatively correlated in $dTC_{\geq 10}$ (**Table 1B**), i.e., the dTC size was inversely correlated with age at a particular size of city. Indeed, **Figure 8** shows that dTC with a low median age tended to have a large size in the middle PopRatio (shown in blown dots) but not in the Kanto region (black dots). Interaction between "age" and "regional population size" was marginally significant ($p = 0.077$), suggesting individuals in Kanto and Kinki, which are densely populated regions, tended to be young. "VL" positively correlated with the property of dTC affiliation in both $dTC_{\geq 10}$ and $dTC_{\geq 20}$, although the regression coefficients were low (beta = 1.48×10^{-7} and 1.51×10^{-7} , respectively). However, "CD4+ T-cell count" and "VL" did not correlate with dTC affiliations unlike the univariate test. We also performed correlation analysis on five categorical variables by converting those with dummy variables (**Table 2**). In gender, women were negatively associated with $dTC_{\geq 20}$.

TABLE 1A | Analysis of associating demographic and clinical characteristics with the affiliation of the large TCs (≥ 20).

	Clustered	Unclustered	Total	Clustered rate %	Odds ratio	95% C.I.	P-value	
(A) THE UNIVARIATE CONTINGENCY ANALYSIS BY FISHER'S EXACT TEST								
Total number of individuals	3,708	678	4,386	84.5				
Gender								
Male	3,625	644	4,269	84.9	3.030	1.635–5.171	0.0002	***
Female	39	21	60	65.0				
Unknown	44	13	57	77.2				
Transmission risks								
MSM or bisexual	2,456	436	2,892	84.9	1.564	1.206–2.017	0.0060	**
Heterosexual	342	95	437	78.3				
IVDU or unidentified	910	147	1,057	86.1				
Nationality								
Japanese	2,977	509	3,486	85.4	1.448	0.895–2.269	0.1029	
Foreigner	105	26	131	80.2				
Unidentified	626	143	769	81.4				
Age								
<40 y.o.	2,377	307	2,684	88.6	1.927	1.585–2.339	<10 ⁻¹¹	***
≥ 40 y.o.	876	218	1,094	80.1				
Unidentified	462	349	811	57.0				
BED assay								
Recent	713	78	791	90.1	1.466	1.105–1.958	0.0064	**
Not recent	1,297	208	1,505	86.2				
Unexamined	1,698	392	2,090	81.2				

***Significance level $p < 0.001$, **Significance level $p < 0.01$.

TABLE 1B | Multivariate logistic regression test.

Term	TC size	b estimate	Standard error	z-value	Adjusted OR (95% C.I.)	P-value	
(Intercept)	≥ 10	1.860	0.222	8.369	3.348 (1.860–10.71)	<0.0001	***
	≥ 20	0.870	0.455	1.912	1.912 (0.978–5.827)	0.056	
Age	≥ 10	-0.011	3.95×10^{-3}	-2.687	0.998 (0.978–1.020)	0.007	**
	≥ 20	0.012	0.011	1.100	1.012 (0.991–1.035)	0.271	
Regional population ratio	≥ 10	-1.690	0.540	-3.133	1.039 (0.025–43.22)	0.002	**
	≥ 20	1.260	1.940	0.648	3.515 (0.079–157.2)	0.517	
CD4 ⁺ T-cell count	≥ 10	-1.38×10^{-4}	2.29×10^{-4}	-0.601	0.999 (0.999–1.000)	0.548	
	≥ 20	4.95×10^{-5}	2.35×10^{-4}	0.211	1.000 (0.999–1.001)	0.832	
Viral load	≥ 10	1.48×10^{-7}	5.71×10^{-8}	2.593	1.027 (0.995–1.048)	0.090	
	≥ 20	1.51×10^{-7}	5.63×10^{-8}	2.679	1.076 (1.000–1.118)	0.070	
Age: regional population ratio	≥ 10	-0.086	0.049	-1.768	0.956 (0.871–1.049)	0.077	
	≥ 20	-8.58×10^{-2}	0.049	-1.768	0.918 (0.835–1.009)	0.077	

OR, Adjusted odds ratio, ***Significance level $p < 0.001$, **Significance level $p < 0.01$.

affiliation. In the collected region, Tokai (PopRatio = 15%) and Kyushu (PopRatio = 10%) regions were positively, and Chugoku-Shikoku (PopRatio=9%), Hokkaido (PopRatio = 4%), Koushinetsu (PopRatio = 4%), Tohoku (PopRatio = 7%), and Okinawa (PopRatio = 1%) regions were negatively associated with $dTC_{\geq 20}$ affiliation. Non-sexual contacts (blood transfer, blood product, IDU and MCT in **Table 2**) were negatively associated with $dTC_{\geq 20}$ affiliation. The BED assay and the nationality were analyzed separately because these surveys were conducted in a limited number of cases. The result showed that

the number of early diagnosed individuals tended to be higher in $dTC_{\geq 20}$.

DISCUSSION

Since our drug resistance surveillance network recruited the high coverage of PLWHA from all over Japan, and the method and reference sequences were carefully selected to identify domestically limited transmissions, the results shown in this study will represent the trends of nation-wide subtype B epidemic in Japan. Subtype B viruses were introduced in Japan through hundreds of different origins between the 1990's and 2000's and then each spread in episodic manner. TC-affiliating ratio of subtype B in Japan (3,714/4,398: 84.4%) was significantly higher than that of CRF01_AE in Japan (31.3% included in 30 clusters) (10) as well as subtype B in London (23.7%) (24) and Washington DC (13.5%) (25), suggesting that the domestic transmission event of subtype B virus was extremely frequent in Japan. Actually, we found several large dTC s involving >100 PLWHAs. Shape of the size distribution, as presented here (**Figure 3**), was right-hand tailed, as in the London study (24) and CRF01_AE (10); however, its decrease was more gradual, suggesting its tendency to create a domestic cluster, relative to those cases. These results raise public health concerns that subtype B viruses are more likely to spread in the domestic at-risk population.

Our finding indicated that MSM was the key population for subtype B epidemic in Japan. Considering limitation of understanding risk behaviors by interviews, in general, valid and reliable sexualities of individuals are difficult to obtain due to poor recall and embarrassment (26). Therefore, the transmission cluster analysis may compensate uncertainty of interview-based risk behaviors and establish consistency of collected information. In fact, most dTC s were predominantly male even though they included the heterosexual cases by the interview. Since MSM with subtype B is the most prevalent at-risk population since the 2000's in Japan (27), large dTC s often appeared to be MSM is not surprising. Then another question needs to be addressed, what transmission structure does the MSM population have?

The result implied that MSM communities in a geographic region are closed network and few interactions among the communities. This epidemiological situation is similar to that of other areas in high-income countries, where MSM has been significantly the at-risk population and transmission patterns were episodic (24, 28–32). Many local MSM groups in high-income countries commonly live within a city without substantial interaction between each other, and HIV is transmitted between MSMs along with the population structure. In contrast, transmission clusters of CRF01_AE infection in Japan were prevalent mainly among heterosexuals until the 2000's (10). Higher active transmission of subtype B in a local region than that of the CRF01_AE should have been not caused by the difference in the virological property but in the key population. In this context, recent increase of CRF01_AE viruses among MSM individuals (7) is another concern in Japan. The reports of domestically generated circulating recombinant forms of CRF01_AE viruses (33, 34) indicates that CRF01_AE viruses have

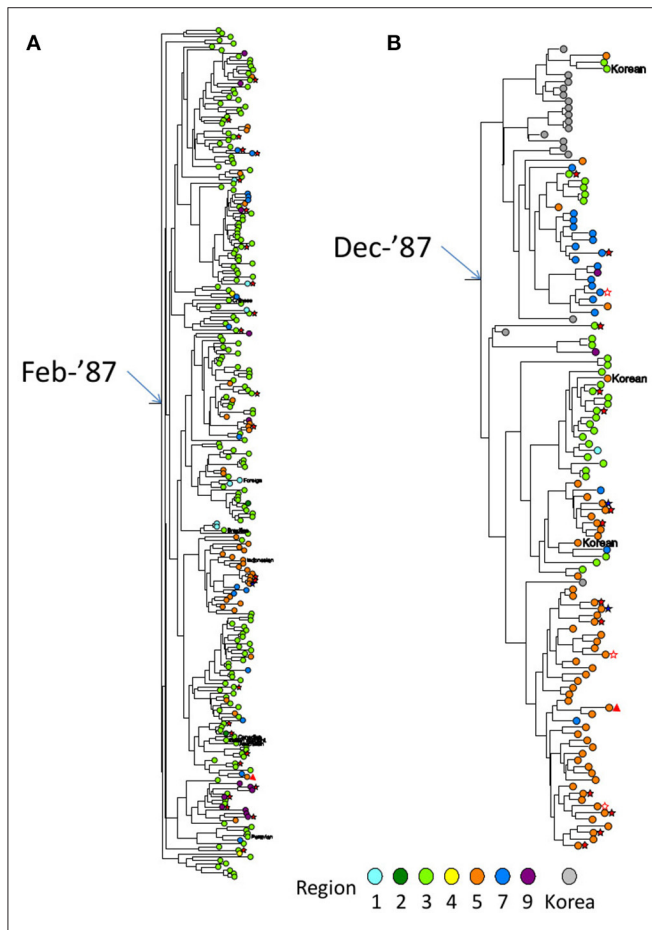
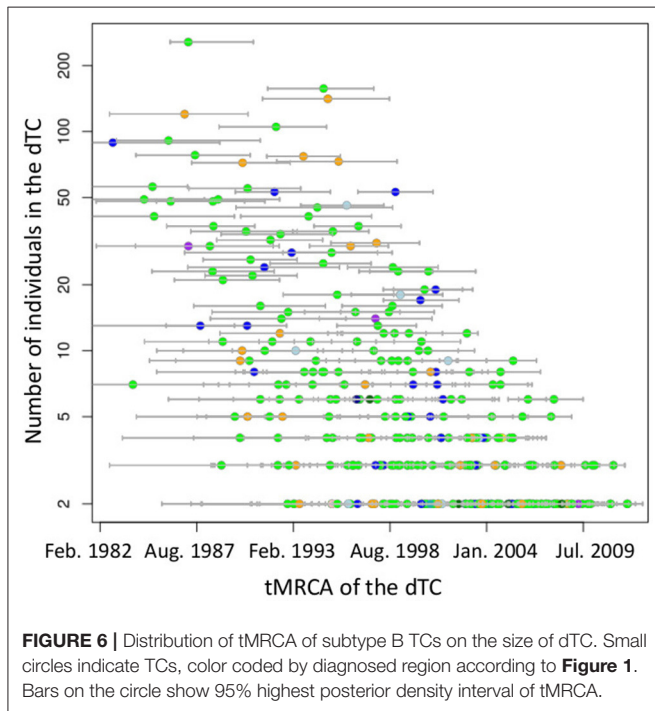
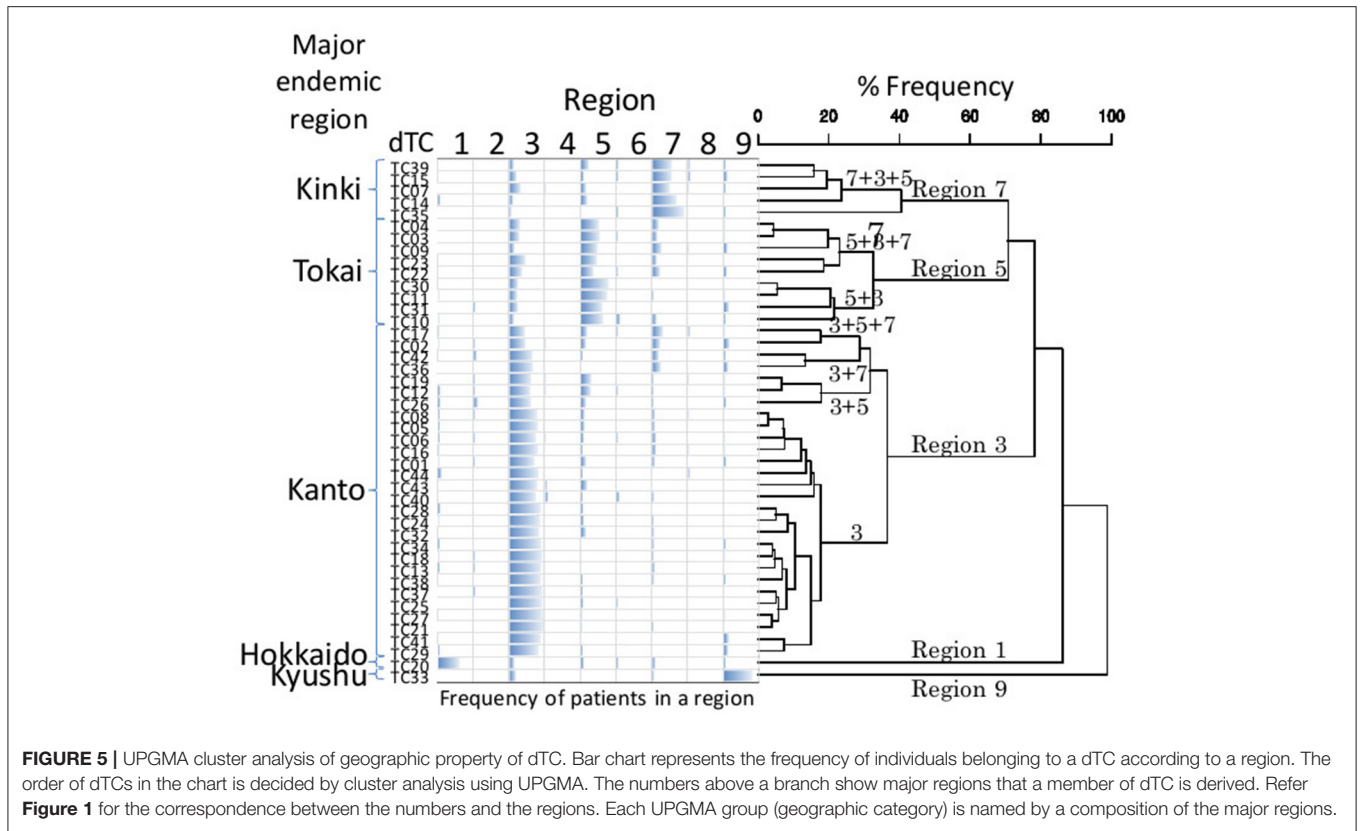


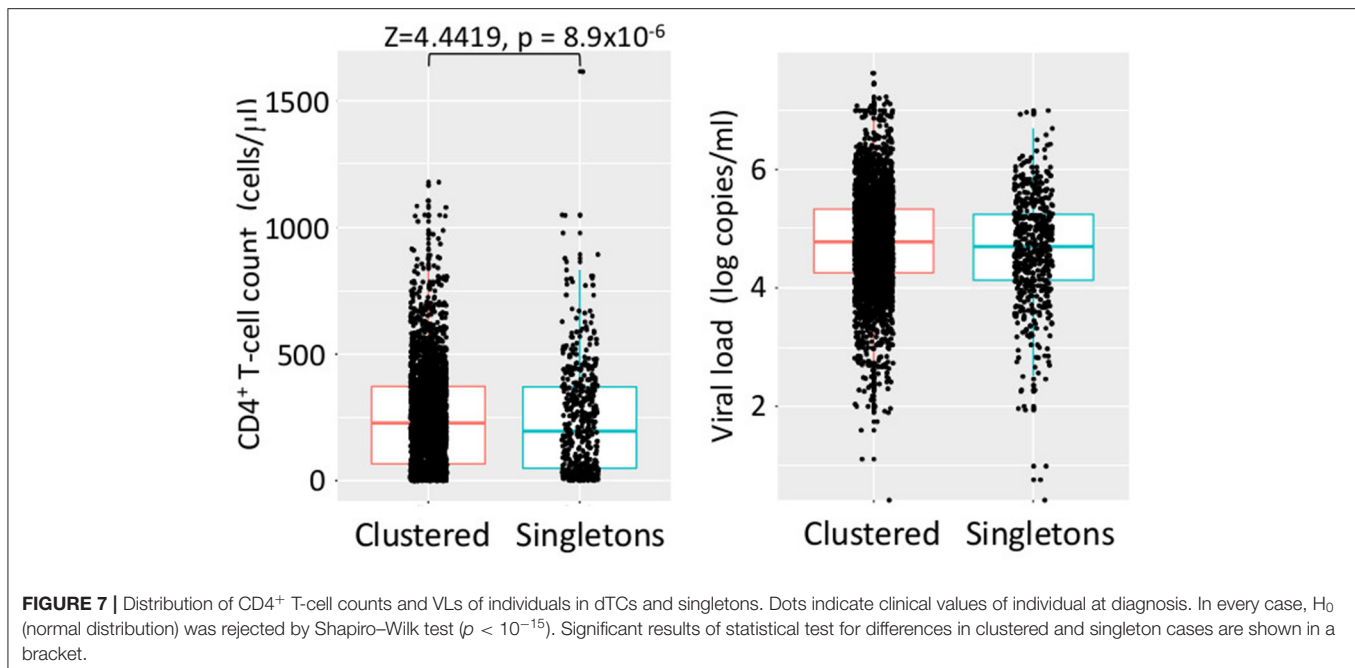
FIGURE 4 | Partial Bayesian clade credibility tree of two extremely large dTC s identified in Japan. **(A)** The monophyletic group constituting TC001, which was the largest dTC in Japan. **(B)** The monophyletic group constituting TC004, which was the 4th largest dTC with Korean foreign references in ancestral nodes. Maximum clade-credibility chronological tree was inferred by Bayesian MCMC method using BEAST 1.8. Clock and demographic model adopted for the inferences were strict clock/constant size and exponential/constant size for TC001 and TC004, respectively. Sequences from subjects are designated by circles colored representing their regions diagnosed. Gray circle shows the reference sequence from Korea. Transmission risk declared by the individual is shown in symbols as follows: MSM as no mark, bisexual male as blue five-pointed star, filled heterosexual male as red five-pointed star, heterosexual female as open five-pointed star and IDU as triangle. Non-Japanese individuals' nationalities are represented by red circles with their country code as same as the HIV database (<https://www.hiv.lanl.gov/content/sequence/HelpDocs/databasecountrycode.html>).



invaded into Japanese MSM groups where subtype B viruses have spread, and the both subtypes were co-infected in an individual. In fact, CRF69_01B, one of such B-01 recombinants-related

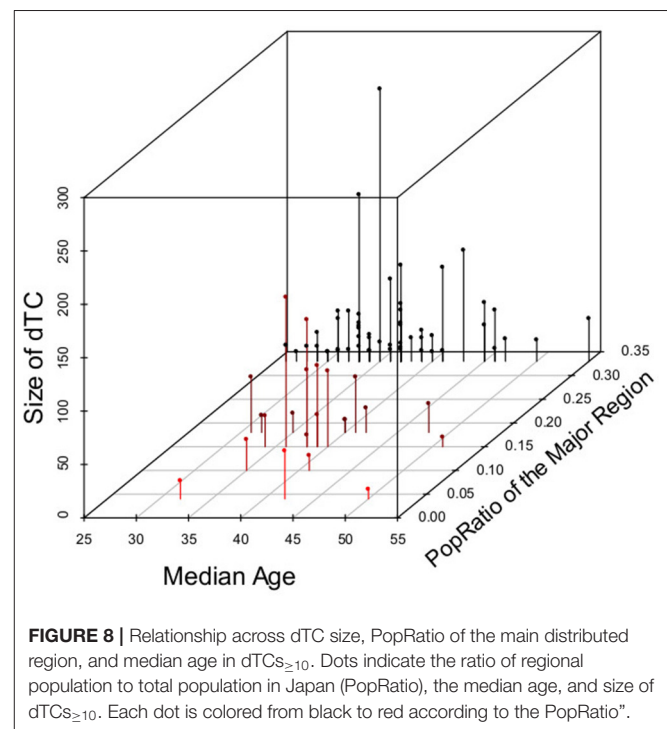
clusters, was identified as TC053 ($n = 15$). These conditions suggest that understanding the contribution of each MSM to TC formation and growth is increasingly important in establishing a prevention strategy.

MSMs was frequent in dTCs but were also found in singletons. What is the difference between MSMs who did and did not affiliate to dTC? The cases included in dTC were composed of younger ($p = 0.007$) and earlier diagnosed ($p = 0.0064$) MSMs ($p = 0.0060$) from middle-population regions (Tokai and Kyushu, $p = 0.002$). The number of young individuals slightly increased in $dTC_{\geq 10}$ (**Table 1B**), suggesting that younger MSMs tend to gather in cliques. Because all samples were collected from ART naïve cases, the ratio of individuals in the earlier stage was consistent with higher CD4+ T-cell counts. This may lead to our observation that large dTCs showed a significantly higher average CD4+ T-cell count than the others. Taken together, MSMs in large dTCs may have been possible to take a HIV testing at earlier phase. Our finding also showed that two middle-population regions, Tokai and Kyushu, only associated with large dTC affiliation. The two regions include the third and fourth major cities in Japan, Nagoya and Fukuoka, respectively. The result suggests that developing a bigger dTC within a single region may require the optimal size of urban area. In general, MSM tends to migrate from rural areas or small cities to larger cities, where they can anonymously and easily engage in sexual encounters (35, 36). Therefore, larger cities will likely foster larger MSM groups. As gay community subculture is divided into various profiles based on the difference in trivial sexual



behaviors (37), an urban MSM group is also subdivided based on their behavior. Some of them may sexually engage with their colleagues from other cities. Well-developed intercity train network, such as the super-express Shinkansen, might enhance the engagement. Contrary to Nagoya and Fukuoka that have excellent railway networks within the region, the Shinkansen has only intermediate or terminal stations. As a result, an infected MSM in a huge city might limitedly spread the virus within the local group in the meantime and then to other regions through an intercity network of MSMs. This may be a reason why the dTC affiliation rate in other studies objecting single big cities (24, 25) were much lower than our result. The optimal structure for TC development in a region implies that MSMs in the transmission network keep in close communication. Those networks members tend to be young and have early diagnosis, suggesting awareness on HIV infection of some young MSMs with a lot of intimate sexual friends. This is contrary to reports from high- and medium-income countries that young MSM did not undergo HIV testing (38, 39), but is consistent with the report that young MSM in Tokyo tended to visit hospitals during recent phase of infection (40).

The study has limitation that phylogeny-based identification of HIV potential transmission partners may not be identical with the real-world direct transmission link (41). Since the patients who participated in our drug resistance surveillance were recruited, selection bias may arise from both patients who choose hospitals outside our network and had not undergone HIV test. This may cause failure in finding the virus in the “missing link” that connects two dTCs that are originally one. dTCs identified here notably underestimated both the scope and number of MSM groups at risk for HIV. The selection bias also gives rise to the possibility of dTCs containing more females. Since male prevalence in the official HIV surveillance in Japan was 97% in



2012, and the number of cases with the available sequence was 22% of the total number reported, we assumed the male/female ratio in the sample to not be biased. The tendency of dTC to include early-diagnosed cases in young men may be an artifact, since a young person would obviously have a short time from infection to diagnosis due to the age factor.

In conclusion, many episodic MSM groups have simultaneously transmitted HIV-1 subtype B in Japan; some

TABLE 2 | Categorical variate analysis of demographic characteristics associating with the size of TCs using Hayashi's quantification theory type I.

Variates	Category	Category score	Partial corr. coeff.	t-value	P-value
Gender	Male	0.452	0.054	3.553	<0.001
	Female	-29.183			
	Unknown	-13.462			
Region	Kanto (33%)	-3.494	0.128	8.581	<0.001
	Kinki (16%)	-3.576			
	Tokai (15%)	17.729			
	Kyushu (10%)	6.190			
	Chugoku-Shikoku (9%)	-15.910			
	Tohoku (7%)	-16.035			
	Koushinetsu (4%)	-12.721			
	Hokkaido (4%)	-8.664			
	Hokuriku (2%)	-3.178			
	Okinawa (1%)	-46.241			
Risk	MSM	0.671	0.046	3.057	0.002
	Heterosexual	1.580			
	Bisexual	-13.288			
	Blood transfer	-34.076			
	Blood product	-47.976			
	IDU	-10.365			
	MCT	-48.076			
	Unidentified	-1.126			
Constant		52.118			
Nationality*	Japanese	-0.033	0.002	0.079	0.937
	Other countries	0.648			
Result of BED*	Recent	2.270	0.022	0.859	0.391
	Not recent	-1.120			
constant*		59.289			

*excluded cases without BED assay (total of 1,462 individuals).

of which consisted of many and averagely young PLWHAs with recently diagnosed. The feature of those MSM groups varies based on the residential region as well as the preferred communication style of each group. This provides a clue in planning a preventive strategy tailored for potential high-risk populations. In this study, we found some sub-clusters in a large dTC as well as small dTCs consisting of the cases reported in a short period. If we target those clusters, we can expect the patients to have a high compatibility with active prevention programs. We also found some phylogenetic structures implying such a situation. On the other hand, PLWHAs who have not been tested will be in the unreachable dTCs. In this context, the few HIV-1 subtype B cases found in females in Japan may be due to the transmission to women via MSM, and not the other way around. Some men in Japan, despite being married to a woman, may continue MSM without her knowledge. Elimination of HIV stigma might allow recruitment of the unreachable MSM as well

as relevant female partners in the tests. The future challenge is how to transport those patients who are likely concerned population in Japan (42, 43) to HIV testing.

DATA AVAILABILITY STATEMENT

The datasets presented in this study can be found in online repositories. The names of the repository/repositories and accession number(s) can be found at: AB640101-AB640604 and AB863746-AB871315.

ETHICS STATEMENT

The studies involving human participants were reviewed and approved by the National Institute of Infectious Diseases and National Hospital Organization Nagoya Medical Center, Japan. The patients/participants provided their written informed consent to participate in this study.

AUTHOR CONTRIBUTIONS

TS, WS, and KY: conceptualization. JH and AH: study resources management. JH: sequence data deposition. TS: phylodynamic analysis and statistical analysis. JH and WS: BED assay. TS, JH, AH, and WS: writing, review and editing. WS and KY: funding acquisition. All authors contributed to the article and approved the submitted version.

FUNDING

This study was supported by a Grant-in-Aid for AIDS research from the Ministry of Health, Labor, and Welfare of Japan H25-AIDS-004 and AMED under Grant Number JP17fk0410205. The funders had no role in study design, data collection and analysis, decision to publish, or preparation of the manuscript.

ACKNOWLEDGMENTS

We are grateful to all the individuals who participated in our surveillance study. We appreciate the support and helpful discussions with members of the Japanese Drug Resistance HIV Surveillance Network: Kenji Sadamasu, Mami Nagashima, Michiko Koga, Masakazu Matsuda, Toshihiro Ito, Teruhisa Fujii, Hiroyuki Gatanaga, Tsunefusa Hayashida, Makiko Kondo, Tamayo Watanabe, Kiyonori Takada, Shuzo Matsushita, Rumi Minami, Asako Nakamura, Naoko Miyazaki, Haruyo Mori, Masao Tateyama, Miki Ishihara, Dai Watanabe, Kaori Sato, Shigeru Yoshida, Hidetoshi Ikari, Toshibumi Taniguchi and Tadashi Kikuchi.

SUPPLEMENTARY MATERIAL

The Supplementary Material for this article can be found online at: <https://www.frontiersin.org/articles/10.3389/frph.2020.531212/full#supplementary-material>

REFERENCES

- Kulldorff M, Nagarwalla N. Spatial disease clusters: detection and inference. *Stat Med.* (1995) 14:799–810. doi: 10.1002/sim.4780140809
- Kulldorff M, Heffernan R, Hartman J, Assunção R, Mostashari F. A space-time permutation scan statistic for disease outbreak detection. *PLoS Med.* (2005) 2:e59. doi: 10.1371/journal.pmed.0020059
- Infectious Diseases Surveillance Center NIID. HIV/AIDS in Japan, 2017. *Infect Agent Surveill Rep.* (2018) 39:149–50. Available online at: <https://www.niid.go.jp/niid/en/component/content/article/865-iasr/8335-463te.html>.
- Beyrer C, Sullivan P, Sanchez J, Baral SD, Collins C, Wirtz AL, et al. The increase in global HIV epidemics in MSM. *AIDS.* (2013) 27:2665–78. doi: 10.1097/01.aids.0000432449.30239.fe
- Brenner BG, Ibanescu RI, Hardy I, Roger M. Genotypic and phylogenetic insights on prevention of the spread of HIV-1 and drug resistance in “real-world” settings. *Viruses.* (2018) 10:10. doi: 10.3390/v10010010
- Hattori J, Shiino T, Gatanaga H, Yoshida S, Watanabe D, Minami R, et al. Trends in transmitted drug-resistant HIV-1 and demographic characteristics of newly diagnosed patients: nationwide surveillance from 2003 to 2008 in Japan. *Antiviral Res.* (2010) 88:72–9. doi: 10.1016/j.antiviral.2010.07.008
- Kondo M, Lemey P, Sano T, Itoda I, Yoshimura Y, Sagara H, et al. Emergence in Japan of an HIV-1 variant associated with transmission among men who have sex with men (MSM) in China: first indication of the international dissemination of the Chinese MSM lineage. *J Virol.* (2013) 87:5351–61. doi: 10.1128/JVI.02370-12
- Gatanaga H, Ibe S, Matsuda M, Yoshida S, Asagi T, Kondo M, et al. Drug-resistant HIV-1 prevalence in patients newly diagnosed with HIV/AIDS in Japan. *Antiviral Res.* (2007) 75:75–82. doi: 10.1016/j.antiviral.2006.11.012
- Hattori J, Shiino T, Gatanaga H, Mori H, Minami R, Uchida K, et al. Characteristics of transmitted drug-resistant HIV-1 in recently infected treatment-naïve patients in Japan. *J Acquir Immune Defic Syndr.* (2016) 71:367–73. doi: 10.1097/QAI.0000000000000861
- Shiino T, Hattori J, Yokomaku Y, Iwatani Y, Sugiura W, Ajisawa A, et al. Phylodynamic analysis reveals CRF01-AE dissemination between Japan and neighboring Asian countries and the role of intravenous drug use in transmission. *PLoS ONE.* (2014) 9:e0102633. doi: 10.1371/journal.pone.0102633
- Edgar RC. MUSCLE: multiple sequence alignment with high accuracy and high throughput. *Nucleic Acids Res.* (2004) 32:1792–7. doi: 10.1093/nar/gkh340
- Kumar S, Stecher G, Tamura K. MEGA7: molecular evolutionary genetics analysis version 7.0 for bigger datasets. *Mol Biol Evol.* (2016) 33:1870–74. doi: 10.1093/molbev/msw054
- Tamura K, Nei M. Estimation of the number of nucleotide substitutions in the control region of mitochondrial DNA in humans and chimpanzees. *Mol Biol Evol.* (1993) 10:512–6.
- Tajima F. Statistical method for estimating the standard errors of branch lengths in a phylogenetic tree reconstructed without assuming equal rates of nucleotide substitution among different lineages. *Mol Biol Evol.* (1992) 9:168–181.
- Sitnikova T. Bootstrap method of interior-branch. *Mol Biol.* (1996) 13:605–11. doi: 10.1093/oxfordjournals.molbev.a025620
- Felsenstein J. Confidence limits on phylogenies: an approach using the bootstrap. *Evolution.* (1985) 39:783–91. doi: 10.1111/j.1558-5646.1985.tb00420.x
- Huelsenbeck JP, Ronquist F, Nielsen R, Bouback JP. Bayesian inference of phylogeny and its impact on evolutionary biology. *Science.* (2001) 294:2310–4. doi: 10.1126/science.1065889
- Drummond AJ, Rambaut A. Bayesian evolutionary analysis by sampling trees. *Bayesian Evol Anal Beas.* (2015) 8:79–96. doi: 10.1017/CBO9781139095112.007
- Prosperi MCF, Ciccozzi M, Fanti I, Saladini F, Pecorari M, Borghi V, et al. A novel methodology for large-scale phylogeny partition. *Nat Commun.* (2011) 2:310–21. doi: 10.1038/ncomms1325
- Xie W, Lewis PO, Fan Y, Kuo L, Chen MH. Improving marginal likelihood estimation for bayesian phylogenetic model selection. *Syst Biol.* (2011) 60:150–60. doi: 10.1093/sysbio/syq085
- Baele G, Li WLS, Drummond AJ, Suchard MA, Lemey P. Accurate model selection of relaxed molecular clocks in bayesian phylogenetics. *Mol Biol Evol.* (2013) 30:239–43. doi: 10.1093/molbev/mss243
- UNAIDS (Joint United Nations Programme on HIV/AIDS). Technical update on HIV incidence assays for surveillance and monitoring purposes. *UNAIDS.* (2015) 13. Available online at: http://www.who.int/diagnostics_laboratory/links/hiv_incidence_assay/en/.
- Hayashi C. On the prediction of phenomena from qualitative data and the quantification of qualitative data from the mathematico-statistical point of view. *Ann Inst Stat Math.* (1951) 3:69–98. doi: 10.1007/BF02949778
- Lewis F, Hughes GJ, Rambaut A, Pozniak A, Leigh Brown AJ. Episodic sexual transmission of HIV revealed by molecular phylodynamics. *PLoS Med.* (2008) 5:e50. doi: 10.1371/journal.pmed.0050050
- Pérez-Losada M, Castel AD, Lewis B, Kharfen M, Cartwright CP, Huang B, et al. Characterization of HIV diversity, phylodynamics and drug resistance in Washington, DC. *PLoS ONE.* (2017) 12:e0185644. doi: 10.1371/journal.pone.0185644
- Wight D. Poor recall, misunderstandings and embarrassment: interpreting discrepancies in young men’s reported heterosexual behaviour. *Cult Health Sex.* (1999) 1:55–78. doi: 10.1080/136910599301166
- Ichikawa S, Kaneko N, Koerner J, Shiono S, Shingae A, Ito T. Survey investigating homosexual behaviour among adult males used to estimate the prevalence of HIV and AIDS among men who have sex with men in Japan. *Sex Health.* (2011) 8:123. doi: 10.1071/SH10073
- Hotton AL, Lubelchek RJ, Kincaid SL, French AL, Barker DE, Hoehnen SC. Transmission clustering among newly diagnosed HIV patients in Chicago, 2008 to 2011. *JAIDS J Acquir Immune Defic Syndr.* (2014) 68:46–54. doi: 10.1097/QAI.0000000000000404
- Chan PA, Hogan JW, Huang A, DeLong A, Salemi M, Mayer KH, et al. Phylogenetic investigation of a statewide HIV-1 epidemic reveals ongoing and active transmission networks among men who have sex with men. *JAIDS J Acquir Immune Defic Syndr.* (2015) 70:428–35. doi: 10.1097/QAI.0000000000000786
- Chaillon A, Essat A, Frange P, Smith DM, Delaunay C, Barin F, et al. Spatiotemporal dynamics of HIV-1 transmission in France (1999–2014) and impact of targeted prevention strategies. *Retrovirology.* (2017) 14:15. doi: 10.1186/s12977-017-0339-4
- Parczewski M, Leszczyszyn-Pynka M, Witak-Jedra M, Szetela B, Gasiorowski J, Knysz B, et al. Expanding HIV-1 subtype B transmission networks among men who have sex with men in Poland. *PLoS ONE.* (2017) 12:e0172473. doi: 10.1371/journal.pone.0172473
- Patiño-Galindo JÁ, Torres-Puente M, Bracho MA, Alastrué I, Juan A, Navarro D, et al. Identification of a large, fast-expanding HIV-1 subtype B transmission cluster among MSM in Valencia, Spain. *PLoS ONE.* (2017) 12:e0171062. doi: 10.1371/journal.pone.0171062
- Hosaka M, Fujisaki S, Masakane A, Hattori J, Shiino T, Gatanaga H, et al. HIV-1 CRF01_AE and subtype B transmission networks crossover: a new AE/B recombinant identified in Japan. *AIDS Res Hum Retroviruses.* (2016) 32:412–9. doi: 10.1089/aid.2015.0192
- Ogawa S, Hachiya A, Hosaka M, Matsuda M, Ode H, Shigemi U, et al. A Novel Drug-resistant HIV-1 circulating recombinant form CRF76_01B identified by near full-length genome analysis. *AIDS Res Hum Retroviruses.* (2016) 32:284–9. doi: 10.1089/aid.2015.0304
- Bruce D, Harper GW. Operating without a safety net. *Heal Educ Behav.* (2011) 38:367–78. doi: 10.1177/1090198110375911
- Liu C, Fu R, Tang W, Cao B, Pan SW, Wei C, et al. Transplantation or rurality? Migration and HIV risk among Chinese men who have sex with men in the urban areas. *J Int AIDS Soc.* (2018) 21:e25039. doi: 10.1002/jia2.25039
- Prestage G, Brown G, de Wit J, Bavinton B, Fairley C, Maycock B, et al. Understanding gay community subcultures: implications for HIV prevention. *AIDS Behav.* (2015) 19:2224–33. doi: 10.1007/s10461-015-1027-9
- Sapsirisavat V, Phanuphak N, Keadpudsa S, Egan JE, Pussadee K, Klaytong P, et al. Psychosocial and behavioral characteristics of high-risk men who have sex with men (MSM) of unknown HIV positive serostatus in Bangkok, Thailand. *AIDS Behav.* (2016) 20:386–97. doi: 10.1007/s10461-016-1519-2
- den Daas C., Doppen M., Schmidt A. J., and Op de Coul, E. (2016). Determinants of never having tested for HIV among MSM in the Netherlands. *BMJ Open.* 6:e009480. doi: 10.1136/bmjopen-2015-009480

40. Hayashida T, Gatanaga H, Takahashi Y, Negishi F, Kikuchi Y, Oka S. Trends in early and late diagnosis of HIV-1 infections in Tokyoites from 2002 to 2010. *Int J Infect Dis.* (2012) 16:e172–e177. doi: 10.1016/j.ijid.2011.11.003
41. Hecht FM, Wolf LE, Lo B. Lessons from an HIV transmission pair. *J Infect Dis.* (2007) 195:1239–41. doi: 10.1086/512247
42. Nishijima T, Takano M, Matsumoto S, Koyama M, Sugino Y, Ogane M, et al. What triggers a diagnosis of HIV infection in the Tokyo metropolitan area? Implications for preventing the spread of HIV infection in Japan. *PLoS ONE.* (2015) 10:e0143874. doi: 10.1371/journal.pone.0143874
43. Iwamoto A, Taira R, Yokomaku Y, Koibuchi T, Rahman M, Izumi Y, et al. The HIV care cascade: Japanese perspectives. *PLoS ONE.* (2017) 12:e0174360. doi: 10.1371/journal.pone.0174360

Conflict of Interest: JH is currently employed by the company MSD Japan. WS is currently employed by the company bioMérieux Japan.

The remaining authors declared that the research was conducted in the absence of any commercial or financial relationships that could be construed as a potential conflict of interest.

Copyright © 2020 Shiino, Hachiya, Hattori, Sugiura and Yoshimura. This is an open-access article distributed under the terms of the Creative Commons Attribution License (CC BY). The use, distribution or reproduction in other forums is permitted, provided the original author(s) and the copyright owner(s) are credited and that the original publication in this journal is cited, in accordance with accepted academic practice. No use, distribution or reproduction is permitted which does not comply with these terms.