



OPEN ACCESS

EDITED BY

Yanlin Niu,
Beijing Center for Disease Prevention and
Control (Beijing CDC), China

REVIEWED BY

Natasa Krsto Rancic,
Institute for Public Health Nis, Serbia
Rao L. Divi,
National Institutes of Health (NIH),
United States
Xiaobei Deng,
Shanghai Jiao Tong University, China
Fatemeh Khosravi Shadmani,
Kermanshah University of Medical Sciences,
Iran

*CORRESPONDENCE

Imjai Chitapanarux
✉ imjai.chitapanarux@cmu.ac.th

RECEIVED 22 February 2024

ACCEPTED 26 August 2024

PUBLISHED 23 September 2024

CITATION

Thongsak N, Chitapanarux T,
Chotirosniramit A, Chakrabandhu S,
Traisathit P, Nakharutai N, Srikummoon P,
Thumronglaohapun S, Supasri T,
Hemwan P and Chitapanarux I (2024) Air
pollutants and primary liver cancer mortality:
a cohort study in crop-burning activities and
forest fires area.
Front. Public Health 12:1389760.
doi: 10.3389/fpubh.2024.1389760

COPYRIGHT

© 2024 Thongsak, Chitapanarux,
Chotirosniramit, Chakrabandhu, Traisathit,
Nakharutai, Srikummoon,
Thumronglaohapun, Supasri, Hemwan and
Chitapanarux. This is an open-access article
distributed under the terms of the [Creative
Commons Attribution License \(CC BY\)](https://creativecommons.org/licenses/by/4.0/). The
use, distribution or reproduction in other
forums is permitted, provided the original
author(s) and the copyright owner(s) are
credited and that the original publication in
this journal is cited, in accordance with
accepted academic practice. No use,
distribution or reproduction is permitted
which does not comply with these terms.

Air pollutants and primary liver cancer mortality: a cohort study in crop-burning activities and forest fires area

Natthapat Thongsak¹, Taned Chitapanarux²,
Anon Chotirosniramit³, Somvilai Chakrabandhu⁴,
Patrinee Traisathit¹, Nawapon Nakharutai¹,
Pimwarat Srikummoon¹, Salinee Thumronglaohapun¹,
Titaporn Supasri⁵, Phonpat Hemwan⁶ and Imjai Chitapanarux^{4*}

¹Department of Statistics, Faculty of Science, Chiang Mai University, Chiang Mai, Thailand, ²Division of Gastroenterology, Department of Internal Medicine, Faculty of Medicine, Chiang Mai University, Chiang Mai, Thailand, ³Division of Hepatobiliary-Pancreatic Surgery, Department of Surgery, Faculty of Medicine, Chiang Mai University, Chiang Mai, Thailand, ⁴Division of Radiation Oncology, Faculty of Medicine, Chiang Mai University, Chiang Mai, Thailand, ⁵Atmospheric Research Unit of National Astronomical Research Institute of Thailand, Chiang Mai, Thailand, ⁶Geo-Informatics and Space Technology Centre (Northern Region), Department of Geography, Faculty of Social Sciences, Chiang Mai University, Chiang Mai, Thailand

Introduction: Northern Thailand experiences high levels of air pollution in the dry season due to agricultural waste burning and forest fires. Some air pollutants can enter the bloodstream, and the liver has the role of detoxifying these along with other harmful substances. In this study, we assessed the effects of long-term exposure to air pollutants on liver cancer mortality in this area.

Methods: A cohort of 10,859 primary liver cancer patients diagnosed between 2003 and 2018 and followed up to the end of 2020 were included in the study. Extended time-varying covariates of the annually averaged pollutant concentrations updated each year were utilized. The associations between air pollutants and mortality risk were examined by using a Cox proportional hazard model.

Results: Metastatic cancer stage had the highest adjusted hazard ratio (aHR) of 3.57 (95% confidence interval (CI):3.23–3.95). Being male (aHR = 1.10; 95% CI: 1.04–1.15), over 60 years old (aHR = 1.16; 95% CI: 1.11–1.21), having a history of smoking (aHR = 1.16; 95%CI: 1.11–1.22), and being exposed to a time-updated local concentration of PM_{2.5} of 40 µg/m³ (aHR = 1.10; 95% CI: 1.05–1.15) increased the mortality risk.

Conclusion: We found that air pollution is one of several detrimental factors on the mortality risk of liver cancer.

KEYWORDS

liver cancer, mortality rate, air pollutants, forest fire area, survival rate

1 Introduction

Liver cancer is the sixth most common form of cancer after breast, lung, colorectal, prostate, and stomach cancer (1, 2). The World Health Organization (WHO) reported 905,677 new liver cancer cases in 2020, of whom 830,180 died (1, 2). Asia had the highest number of new cases (656,922; 72.5%), followed by Europe (87,630; 9.7%), and Africa (70,542; 7.8%) (1, 2). Of the Asian countries, Thailand had the second highest incidence of liver cancer (after Mongolia) with 27,394 cases, 26,704 of whom died, equating to an incidence rate of 39.2 and a mortality risk of 38.3 (1, 3). The World Health Organization estimates that the total number of new liver cancer cases in Thailand will increase to 42,600 by 2040, implying that the liver cancer incidence will persist and increase markedly within 20 years (4, 5).

People with hepatitis B and hepatitis C are known to develop cirrhosis, which can lead to liver cancer and accounts for 80% of all liver cancer cases worldwide (6, 7). Furthermore, it has been reported that diabetes increases the incidence and mortality of liver cancer (7–10). Moreover, nonalcoholic fatty liver disease (NAFLD), which can cause cirrhosis and thereby lead to liver cancer, is on the rise. In 2020, NAFLD patients had an incidence and mortality of liver cancer of 44 and 77 per 100,000 persons per year (11). Alcohol use is a long-established risk factor for liver cancer incidence and mortality (12–17), and even low-level consumption poses an approximately three-fold higher risk (18). Males exhibit a higher incidence of liver cancer compared to females, with studies consistently demonstrating a two to three times higher risk in the former (14, 15, 17, 19). Usually, the lifestyle of men and women is different in both alcohol consumption and, especially, smoking (6, 12). Smoking is associated with a 30 to 70% increased risk of liver cancer compared to non-smokers (12, 20, 21).

Both *in vitro* and animal model studies have shown that exposure to $PM_{2.5}$ causes oxidative stress in hepatocytes, leading to increased DNA damage and subsequent repair in the liver (22–25). This process can result in liver fibrosis similar to that seen in non-alcoholic fatty liver disease, which can exacerbate the initiation of liver cancer. Studies of humans have indicated that inhalation of pollutants can affect the liver through the circulatory system (26, 27). Brook et al. (28) reported an association between air pollutants and elevated serum levels of alanine transaminase (ALT), aspartate aminotransferase (AST), and gamma-glutamyl transpeptidase (GGT), which are known biomarkers for liver injury.

Particulate matter (PM) $\leq 2.5 \mu m$ ($PM_{2.5}$) and $\leq 10 \mu m$ (PM_{10}), nitrogen dioxide (NO_2), sulfur dioxide (SO_2), carbon monoxide (CO), and ozone (O_3) are major air pollutants in Thailand (29). Thailand has consistently ranked among the top 50 countries with the highest ambient air pollution, particularly from 2019 to 2021 (30–32). Over the past decade, forest fires and agricultural waste burning during the dry season (January–April) have significantly reduced the air quality in northern Thailand (33). Thailand's national annual average standards for $PM_{2.5}$ and PM_{10} concentrations are 25 and $50 \mu g/m^3$, respectively, which are higher than those set by the WHO (10 and $20 \mu g/m^3$, respectively). According to the air quality measurement criteria used by IQ AIR (a Swiss organization), a $PM_{2.5}$ level above $25 \mu g/m^3$ is slightly deleterious to health, above $35 \mu g/m^3$ is highly detrimental, and above $50 \mu g/m^3$ is hazardous (30).

In recent years, several research groups have investigated whether PM is associated with liver cancer mortality. The outcomes from a

study in Taiwan indicate that exposure to $PM_{2.5}$ levels greater than $36 \mu g/m^3$ is associated with a 58% increased risk of mortality from liver cancer, with each $5 \mu g/m^3$ increase in $PM_{2.5}$ exposure being associated with a 13% increase (34). Meanwhile, another research group in Taiwan observed that a $1 \mu g/m^3$ increase in $PM_{2.5}$ exposure is associated with an 11% increase in the mortality risk due to liver cancer (35). Similarly, the findings from another study conducted in California infer that exposure to $PM_{2.5}$ after a diagnosis of hepatocellular carcinoma shortens life expectancy, with a 1 unit ($5 \mu g/m^3$) increase in $PM_{2.5}$ resulting in an 18% increase in mortality (36). From a US partial cohort study of non-smoking individuals (37), it was found that a $10 \mu g/m^3$ increase in $PM_{2.5}$ is associated with a significant 2.18-fold increase in the risk of mortality from liver cancer.

Even though PM levels and liver cancer mortality rates appear to be related, the levels of $PM_{2.5}$ and PM_{10} associated with the risk of mortality are still debatable and unconfirmed. In a recent systematic review (38), the authors reported that the outcomes from several studies suggest an association between $PM_{2.5}$ level and liver cancer mortality but not with liver cancer incidence. Thus, we hypothesized that exposure to ambient air pollution after the development of liver cancer increases the risk of mortality. In prior studies, the researchers did not examine the effects of multiple air pollutants such as $PM_{2.5}$, PM_{10} , NO_2 , SO_2 , CO, and O_3 over an extended period using time-varying covariates. Moreover, only a few researchers have explored the various causes of liver cancer within the socioeconomic context in Asia and compared this to other regions in the world. To the best of our knowledge, ours is the first cohort study conducted to examine the relationship between ambient air pollution, especially PM, and liver cancer mortality in northern Thailand, an area afflicted by crop-burning activity and forest fires for a significant part of the year. In addition, to the best of our knowledge, a cohort study to examine the relationship between ambient air pollution and liver cancer mortality in northern Thailand has not previously been conducted. Therefore, the aim of the present study is to investigate the effect of high levels of PM on the risk of mortality from liver cancer in this area.

2 Materials and methods

2.1 Study design and population

This retrospective cohort study was conducted to examine the mortality and associated risk factors on liver cancer patients in upper northern Thailand using extended time-varying covariates ($PM_{2.5}$, PM_{10} , NO_2 , SO_2 , CO, and O_3 levels) over 15 years. Patients who were diagnosed with primary liver cancer [either hepatocellular carcinoma (HCC) or cholangiocarcinoma (CCA)] between January 1, 2003, and December 31, 2018, were followed up from their registered date to the end of 2020.

2.2 Exposure assessment for time-updated variables

The dataset used in the present study included concentrations of particulate matter, NO_2 , SO_2 , CO, and O_3 . Since these could have changed throughout the follow-up period, they were thus included as time-varying covariates in the analysis (39). Hourly air pollutant data

from 2003 to 2020 were obtained from the Copernicus Atmosphere Monitoring Service (CAMS), the European Centre for Medium-Range Weather Forecasts (40, 41). The CAMS reanalysis merges modeled data utilizing a physics and chemistry-based atmospheric model with real observations to create a globally complete and consistent dataset consisting of 3-dimensional (3D) time-consistent atmospheric composition fields that include aerosols and chemical species (42). The spatial resolution for the dataset is approximately 80 km. The data are available in two formats of spectral coefficients: triangular truncation of linear grids (T255). The daily forecast beginning at 00 Universal Time Coordinated (UTC) for 48 h includes 3-hourly steps for the 3D model level and pressure level fields and hourly steps for the surface fields. In the present study, we utilized the average of the hourly concentrations to provide annual concentrations for each pollutant for each district in upper northern Thailand. These were then linked to the district of each patient's residence (based on the assumption that their recorded address was where they lived and subsequently died) and the calendar year of diagnosis obtained from the Chiang Mai Cancer Registry. This was updated each year until the patient's death, loss to follow-up, or censoring due to still being alive at the end of the study period.

2.3 Baseline and follow-up data

Information on each cancer patient at diagnosis, including demographics (gender, age, body mass index (BMI), smoking history, and alcohol-use history) and cancer characteristics [cancer stage (SEER staging; localized, regional, or metastatic)]. Each year, the concentration of each pollutant that each patient had been exposed to was obtained by using the pollution dataset detailed in previous section.

2.4 Statistical analysis

The baseline characteristics are presented as frequencies and percentages for categorical variables and medians and interquartile ranges (IQRs) for continuous variables. The follow-up time was calculated from the date of diagnosis to either the date of death regardless of the cause, to the last follow-up date, or censored by using the end of the study period (December 31, 2020), depending on which came first.

Missing values at the baseline of more than 30% for BMI, smoking history, and alcohol-use history were imputed using multivariate imputation based on linear regression for continuous variables and logistic regression for binary variables (43). In the context of this methodology, all missing values were substituted with imputed ones.

The overall rate of death and those separated by each variable were calculated as the number of deaths divided by the total number of persons per year of follow-up (PYFU). Confidence intervals (CIs) for the mortality risks were based on fitting the data to a Poisson distribution. Survival probability were obtained from Kaplan–Meier curves and log-rank tests were used to determine significant differences between the survival probabilities of the groups for each variable.

To handle these time-varying covariates, we used a time-dependent Cox proportional hazard model and a time-varying

coefficient (44) to investigate the associations between the mortality risk among liver cancer patients and potential risk factors (gender, age, cancer stage, smoking history, alcohol-use history, calendar year of enrollment, and time-updated PM_{2.5}, PM₁₀, NO₂, SO₂, CO, and O₃ concentrations). Log–log plots for survival and Schoenfeld residuals were used to verify the proportional hazards assumption for the Cox model for each covariate. All of the continuous variables were grouped by using quartiles and considered for dichotomization where appropriate [except for BMI with categories: < 18.5 and ≥ 18.5 kg/m² (45)]. Factors associated with mortality risk with *p*-values < 0.25 in the univariable analysis were included in the multivariable analysis via a backward elimination procedure, except for variables with high correlations (to avoid multicollinearity). All analyses were performed by using STATA (version 12).

3 Results

A total of 10,859 liver cancer patients were registered between January 2003 and December 2018, 7,763 (71%) of whom were male. At the time of diagnosis, the median age was 58.7 years old (IQR: 51.6–66.5) and the median BMI was 22.1 kg/m² (IQR: 19.7–24.4). At the time of diagnosis, the medians for PM_{2.5}, PM₁₀, NO₂, SO₂, CO, and O₃ levels were 37.5 µg/m³ (IQR: 33.5–42.1), 52.4 µg/m³ (IQR: 46.8–58.3), 7.2 ppb (IQR: 5.4–8.9), 5.8 ppb (IQR: 3.2–8.2), 390.4 ppb (IQR: 362.7–426.5), and 36.5 ppb (IQR: 35.0–38.5), respectively. Among the liver cancer patients, 6, 56, and 29% were diagnosed with the localized, regional, and metastatic cancer stages, respectively. In addition, 61% of the patients had an alcohol-use history while 54% had a smoking history. The median duration of follow-up and survival time were 1.0 years (IQR: 0.41–3.37) and 0.42 years (IQR: 0.17–1.24), respectively.

3.1 Baseline characteristics and mortality risk

According to the results in Table 1, 9,887 liver cancer patients died from any cause and the overall mortality risk was 68.0 per 100 PYFU (95% CI: 66.7–69.4). The mortality risk was 72.4 per 100 PYFU for men (95% CI: 70.7–74.1) and 59.0 per 100 PYFU for women (95% CI: 56.9–61.2). Age at diagnosis ≥ 60 years had a high mortality risk (78.8 per 100 PYFU; 95% CI: 76.6–81.2), as did having a low BMI (79.3 per 100 PYFU; 95% CI: 75.5–83.4). When considering the three cancer stages, the mortality risk was highest in the group with the metastatic stage (179.6 per 100 PYFU; 95% CI: 173.4–186.1). Having a history of smoking and/or alcohol use also had high mortality risks (74.2 per 100 PYFU; 95% CI: 72.3–76.2 and 71.2 per 100 PYFU; 95% CI: 70.2–73.8, respectively).

3.2 Survival probabilities

Figure 1 illustrates the overall survival probability of the liver cancer patients. Among them, 9,389 died within the first 3 years of diagnosis and the survival probability dropped sharply to 13%. This slowly decreased after a follow-up time of 3 years: the survival probabilities at 6, 9, and 12 years after diagnosis were 9, 7, and 6%, respectively, and thus the 5-year survival rate was estimated as 9.78%.

TABLE 1 Baseline characteristics and the associated mortality risk of the study population.

Characteristic	Survived [n (%)]	Died [n (%)]	PYFU	Mortality risk*	95% CI
Overall	972 (9%)	9,887 (91%)	14,534	68.0	66.7–69.4
Gender					
Male	663 (8%)	7,100 (92%)	9,810	72.4	70.7–74.1
Female	309 (10%)	2,787 (90%)	4,724	59.0	56.9–61.2
Age at diagnosis (years old) [Median 58.7, IQR 51.6–66.5]					
< 60	571 (10%)	5,374 (90%)	8,808	61.0	59.4–62.7
≥60	401 (8%)	4,513 (92%)	5,726	78.8	76.6–81.2
BMI (kg/m ²) [Median 22.1, IQR 19.7–24.4]					
< 18.5	116 (7%)	1,573 (93%)	1,982	79.3	75.5–83.4
≥18.5	856 (9%)	8,314 (91%)	12,552	66.2	64.8–67.7
Cancer stage					
Localized	166 (27%)	453 (73%)	1,731	26.2	23.9–28.7
Regional	631 (10%)	5,469 (90%)	9,443	57.9	56.4–59.5
Metastatic	46 (1%)	3,050 (99%)	1,698	179.6	173.4–186.1
Smoking history					
Yes	433 (7%)	5,414 (93%)	7,293	74.2	72.3–76.2
No	539 (11%)	4,473 (89%)	7,241	61.8	60.0–63.6
Alcohol-use history					
Yes	530 (8%)	6,106 (92%)	8,485	71.2	70.2–73.8
No	442 (10%)	3,781 (90%)	6,049	62.5	60.5–64.5

*Per 100 PYFU (persons per year of follow-up). CI, confidence interval; BMI, body mass index.

The survival probability of the liver cancer patients according to the baseline characteristics including gender, age, BMI, cancer stage, smoking history, and alcohol-use history are presented in Figure 2. The results from log-rank tests show the differences between the survival probabilities of the groups for each variable (all p -values <0.0001). There is evidence that men had a significantly lower survival probability than women (Figure 2A). The results in Figure 2B suggest that liver cancer patients aged ≥60 years old had a significantly lower survival probability than younger ones. In addition, patients who had BMI <18.5 kg/m² had a significantly lower survival probability than those who had a higher BMI (Figure 2C). Liver cancer patients diagnosed with the metastatic stage had a significantly lower survival probability than those diagnosed with either the regional or localized stage (Figure 2D). Moreover, patients with a history of smoking and/or alcohol use had a significantly lower survival probability than non-smokers and non-drinkers (Figures 2E,F).

Figure 3 presents the effect of air pollution according to the patients' residences on the survival probability. Figure 3A shows that patients who lived in an area where the annually averaged PM_{2.5} concentration ≥ 40 μg/m³ had a lower survival probability than where it was <40 μg/m³ (p -value = 0.0001). The same result was found for those who lived in an area where the annually averaged PM₁₀ concentration ≥ 55 μg/m³ compared to where it was <55 μg/m³ (p -value <0.0001) (Figure 3B). Although not statistically significant, the survival probability of those who lived in an area where the annually averaged CO concentration ≥ 418 ppb was slightly lower than where it was <418 ppb (Figure 3E). Meanwhile, there were no differences in the survival probability of patients who lived in areas

with varying concentrations of NO₂ (Figure 3C), SO₂ (Figure 3D), or O₃ (Figure 3F).

3.3 Risk factors associated with death

Table 2 summarizes the results of Cox proportional hazard models for determining risk factors associated with the mortality risk among the liver cancer patients. The results from the univariable analysis show that gender, age, BMI, cancer stages, smoking history, alcohol-use history, and time-updated local concentrations of PM_{2.5}, PM₁₀, and CO were risk factors for death among the liver cancer patients (all p -values ≤0.0001).

Since there was a multicollinearity issue when including all of the pollutants in the multivariable model, we only retained PM_{2.5}. Thus, the multivariable analysis included gender, age, BMI, cancer stage, smoking history, alcohol-use history, and the time-update local concentration of PM_{2.5}. In the final model, we found that all of the included parameters were independently associated with the mortality risk (all p -values <0.0001), except for BMI and alcohol-use history. Especially, the metastatic cancer stage had the highest adjusted hazard ratio (aHR) = 3.57 (95% CI: 3.23–3.95). In addition, we also found that being male (aHR = 1.10; 95% CI: 1.04–1.15) and/or aged 60 years old (aHR = 1.16; 95% CI: 1.11–1.21), having the regional cancer stage (aHR = 1.80; 95% CI: 1.64–1.99) and/or a history of smoking (aHR = 1.16; 95% CI: 1.11–1.22), and/or being exposed to a time-updated local concentration of PM_{2.5} 40 μg/m³ (aHR = 1.10; 95% CI: 1.05–1.15) all increased the mortality risk among the liver cancer patients.

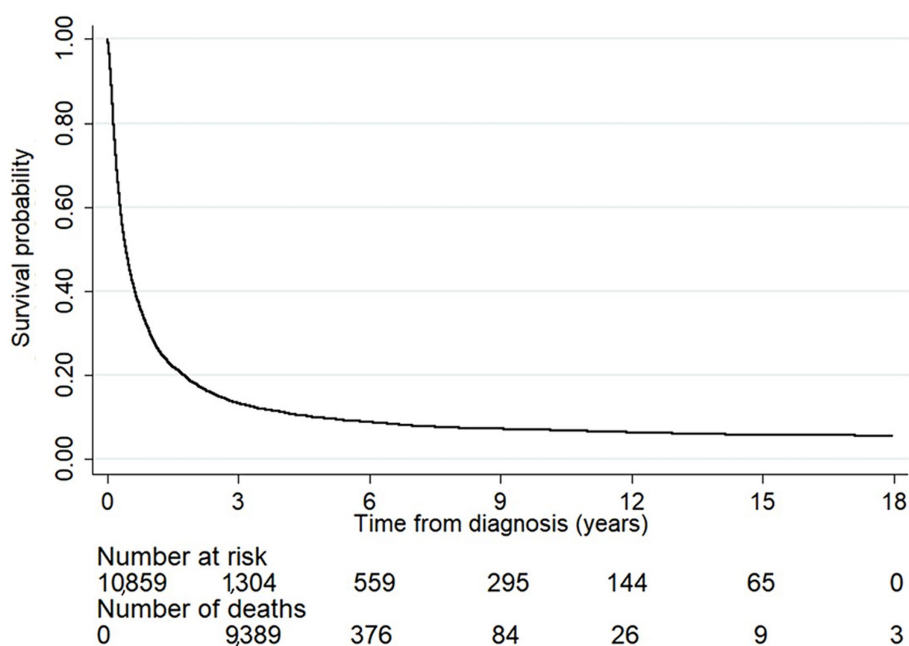


FIGURE 1

The survival probability of the liver cancer patients. The number at risk indicates the number of patients who were still alive each year after diagnosis. The number of deaths indicates the number of patients who died within the duration between a specific time point and the previous one. The overall survival probability sharply dropped within the first 3 years of diagnosis and slowly decreased after the follow-up time passed 3 years.

We checked for interactions between the variables included in the multivariable model (i.e., gender, age, BMI, cancer stage, smoking history, and alcohol-use history) and only found an interaction between BMI and cancer stage. However, we were unable to examine any interactions of these variables with the time-updated $PM_{2.5}$ level.

4 Discussion

We are the first to study the survival probability and risk factors associated with liver cancer in upper northern Thailand using extended time-varying covariates ($PM_{2.5}$, PM_{10} , NO_2 , SO_2 , CO , O_3 levels) based on a retrospective study over 15 years to answer this research. The survival probability of liver cancer patients concerning various factors such as gender, age, BMI, cancer stage, a history of smoking and/or alcohol use, and air pollution levels were examined in this retrospective study comprising a total of 10,859 liver cancer patients diagnosed over 15 years in upper northern Thailand. The results show that the overall mortality risk was 68 per 100 PYFU and the median survival time was 0.42 years. Gender, age, BMI, cancer stage, and smoking and alcohol-use histories were all found to significantly affect the survival probability. Being male and/or ≥ 60 years old, and/or having a low BMI, metastatic cancer, and/or a history of smoking or alcohol use all resulted in a lower survival probability, as did high $PM_{2.5}$, PM_{10} , and CO levels.

The mortality rate among liver cancer patients in our study was noticeably high (87% within 3 years after diagnosis). Although we did not include the impact of air pollution on liver cancer mortality in other regions of Thailand, we suspect that exposure to much higher levels of air pollutants in the northern region increases the risk of liver

cancer mortality. In a previous study on the mortality from cholangiocarcinoma in Thailand from 2009 to 2013 (46), the one-year mortality rate in the northern region was considerably higher than in the central, northeastern, and southern regions where the ambient air pollution is much lower. Thus, expanding our study to include these other areas should be undertaken.

The potential mechanisms for the association between $PM_{2.5}$ and liver cancer mortality remain unclear. $PM_{2.5}$ contains various toxic elements, including heavy metals and other carcinogens, which could trigger the development and progression of cancer. At the molecular level, the genotoxic effects of $PM_{2.5}$ include defects in DNA repair and replication, as well as DNA mutation (47). At the cellular level, $PM_{2.5}$ induces cell damage and apoptosis (48), as well as oxidative stress and inflammation (49). $PM_{2.5}$ causes oxidative stress by producing oxidants and free radicals and consuming antioxidants and enzymes. Diesel exhaust particles have been shown to cause oxidative stress in rats that resulted in DNA damage, the creation of bulky DNA adducts, the triggering of apoptosis, and the upregulation of hepatic DNA repair (23, 50). Long-term exposure to ambient air pollution has been linked to the upregulation of ALT activity, a biomarker for human liver damage (51–53). ALT and other liver function biomarkers and inflammation, such as C-reactive protein and interleukin-6, are used to detect the occurrence of liver cancer (54, 55). Therefore, exposure to ambient $PM_{2.5}$ conceivably contributes to the development of and mortality from liver cancer.

$PM_{2.5}$ -associated mortality could be the result of oxidative stress induced by $PM_{2.5}$ on epithelial cells creating reactive oxygen species that can damage DNA, proteins, and lipids (56, 57). Another explanation is that $PM_{2.5}$ -induced inflammation leads to the production of chemokines and cytokines that promote angiogenesis,

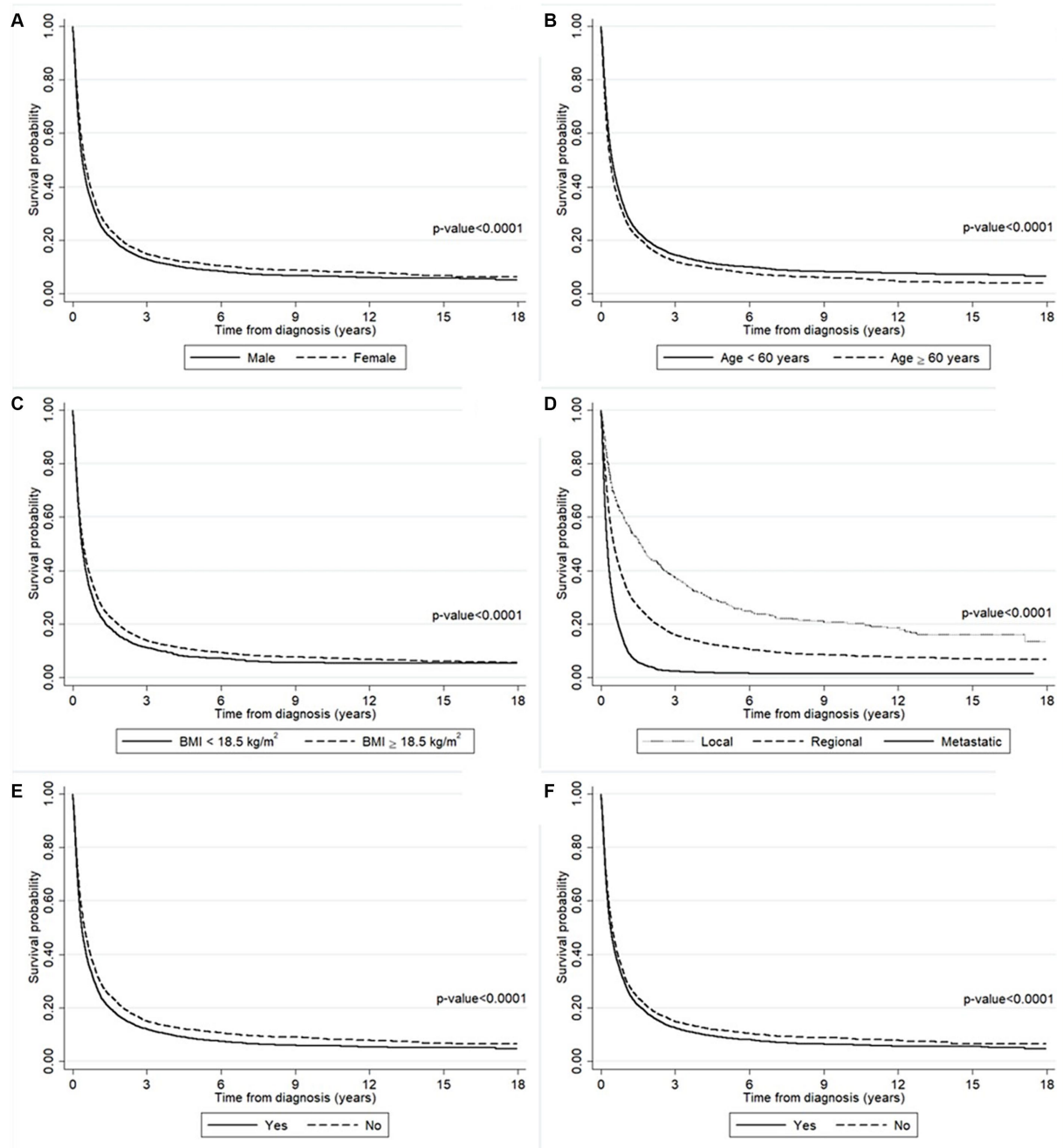


FIGURE 2

The survival probability of the liver cancer patients according to (A) gender, (B) age, (C) BMI, (D) cancer stage, (E) smoking history, and (F) alcohol-use history. The survival probability was significantly lower in the man group (solid line) than the women group (long-dashed line). The survival probability was significantly lower in the older group (long-dashed line) than the younger group (solid line). The survival probability was significantly lower in the lower BMI group (solid line) than the higher group (long-dashed line). The survival probability was significantly lower in the metastatic stage group (solid line) than the other groups (dashed lines). The survival probability was significantly lower in the smoking group (solid line) than the non-smoking group (long-dashed line). The survival probability was significantly lower in the drinking group (solid line) than the non-drinking group (long-dashed line).

thereby enabling the spread of metastatic cells to distant tissues (58). Hence, the carcinogenic effects of PM could stem from defects in DNA repair function and replication (47).

The effects of oxidative stress due to air pollution have been reported in other biological systems (59). Its effects on the digestive system include inflammation of the gut lining epithelial

cells and alterations of the immune response and gut microbiota (56, 60). These could be connected to aerosolized pollutants becoming trapped in the mucus and swallowed. It is also well known that exposure to air pollution can increase inflammation in the human body, which can increase the number of tumor-associated macrophages and predispose an individual to cancer

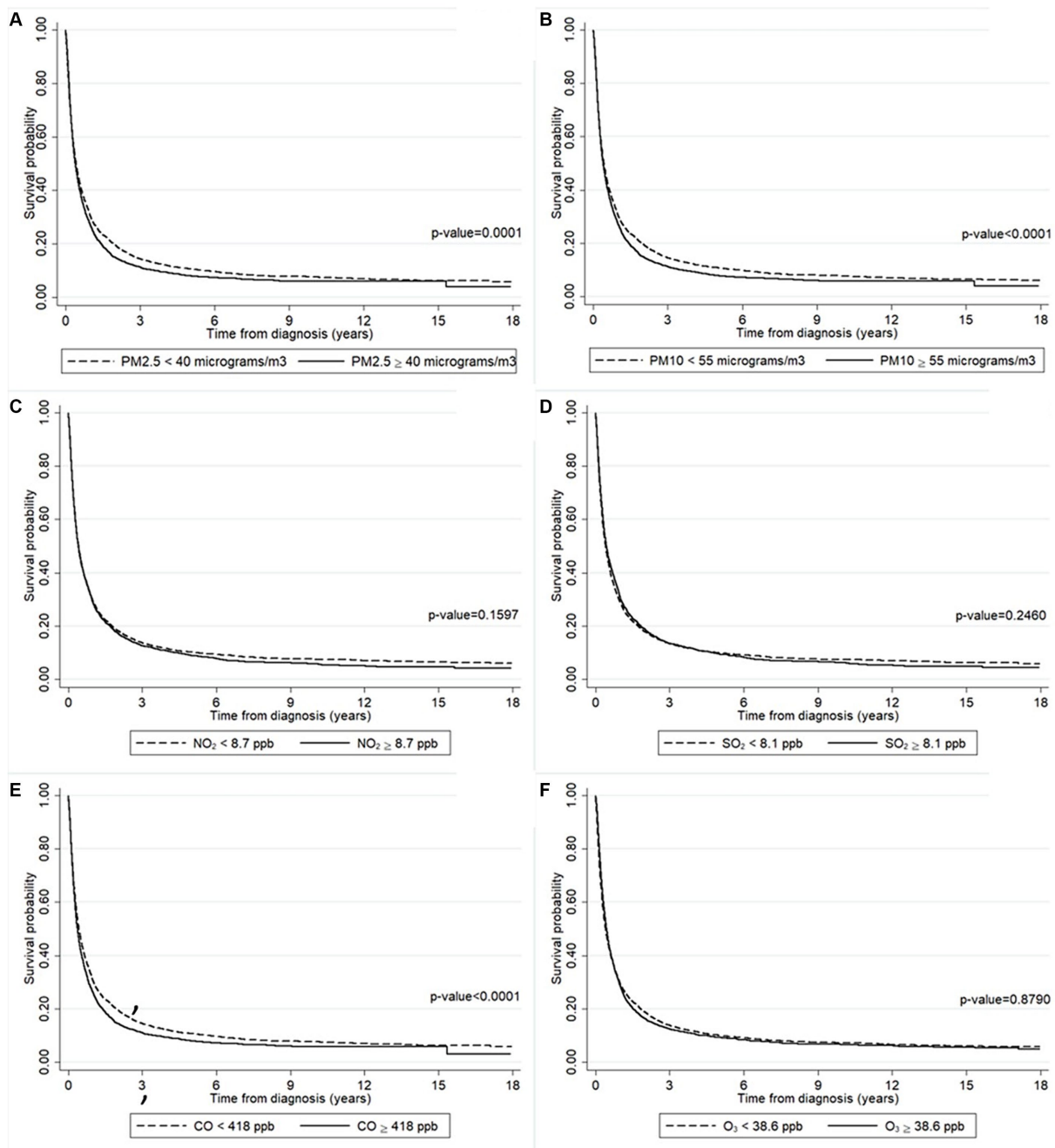


FIGURE 3

The survival probability of the liver cancer patients according to the annually averaged concentrations of (A) $PM_{2.5}$, (B) PM_{10} , (C) NO_2 , (D) SO_2 , (E) CO , and (F) O_3 . The survival probability was significantly lower in the patients who lived in a higher concentration of $PM_{2.5}$ area (solid line) than those lived in a lower concentration of $PM_{2.5}$ area (long-dashed line). The survival probability was significantly lower in the patients who lived in a higher concentration of PM_{10} area (solid line) than those lived in a lower concentration of PM_{10} area (long-dashed line). The survival probability was significantly lower in the patients who lived in a higher concentration of CO area (solid line) than those lived in a lower concentration of CO area (long-dashed line).

(61). In addition, air pollution adversely affects biological aging, the nervous system, smooth muscles, and the immune system (62, 63).

In rats, intragastric exposure to diesel exhaust particles induces oxidative stress associated with DNA damage, bulky DNA adduct formation, induction of apoptosis, and the upregulation of hepatic DNA repair (23, 50). In humans, long-term exposure to ambient air

pollution causes the upregulation of biomarkers such as ALT for liver damage (51–53) and C-reactive protein (CRP) and interleukin-6 (IL-6) for inflammation (54, 55). Therefore, exposure to ambient $PM_{2.5}$ conceivably contributes to the development of liver cancer.

Most of the risk factors in this study impacted the survival rate, which is unsurprising since liver cancer has a poor survival incidence (6). Our study showed that 91% of the patients died within 1 year. The

TABLE 2 Risk factors associated with death among the liver cancer patients.

Characteristic			Univariable analysis			Multivariable analysis		
	Died	Total	HR	95% CI	<i>p</i> -value*	aHR	95% CI	<i>p</i> -value*
At diagnosis								
Male	7,100	7,763	1.11	1.07–1.17	<0.0001	1.10	1.04–1.15	< 0.0001
Aged ≥ 60 years old	4,513	4,914	1.13	1.08–1.17	<0.0001	1.16	1.11–1.21	< 0.0001
BMI < 18.5 kg/m ²	1,573	1,689	1.12	1.06–1.18	<0.0001	1.06	1.00–1.12	0.0596
Regional cancer stage	5,469	6,100	1.78	1.61–1.95	<0.0001	1.80	1.64–1.99	< 0.0001
Metastatic cancer stage	3,050	3,096	3.46	3.13–3.82		3.57	3.23–3.95	
Smoking history	5,414	5,847	1.16	1.11–1.21	<0.0001	1.16	1.11–1.22	< 0.0001
Alcohol-use history	6,106	6,636	1.11	1.06–1.15	<0.0001	1.02	0.96–1.08	0.5924
Time-updated variables								
PM _{2.5} concentration ≥ 40 µg/m ³	–	–	1.09	1.05–1.14	0.0001	1.10	1.05–1.15	< 0.0001
PM ₁₀ concentration ≥ 55 µg/m ³	–	–	1.10	1.05–1.14	<0.0001	–	–	–
NO ₂ concentration ≥ 8.7 ppb	–	–	1.03	0.99–1.08	0.1614	–	–	–
SO ₂ concentration ≥ 8.1 ppb	–	–	0.97	0.93–1.02	0.2664	–	–	–
CO concentration ≥ 418 ppb	–	–	1.13	1.08–1.18	< 0.0001	–	–	–
O ₃ concentration ≥ 38.6 ppb	–	–	1.00	0.95–1.04	0.8792	–	–	–

**p*-value from a partial likelihood ratio test. HR, hazard ratio; CI, confidence interval; aHR, adjusted hazard ratio.

correlation between ambient air pollution exposure and liver cancer might have been confounded by the general health of these individuals. Most cancer patients have poor immune resilience and thus have a higher risk of opportunistic infections (64), which we did not account for. It has been reported that opportunistic infection, a family history of cancer, and high alcohol consumption all significantly impact the liver cancer survival probability (65). Moreover, limited access to advanced cancer detection methods and treatment are major causes of the poor liver cancer survival rate in northern Thailand (66). Thus, although our results demonstrate an association between PM_{2.5} and poor liver cancer survival probability, we cannot assume that the causation is only due to high PM_{2.5} exposure.

The inclusion of local PM, NO₂, and O₃ concentrations as time-varying covariates in the analysis is one of the present study's greatest strengths. Including them means that we could more accurately assess their impact on liver cancer patient survival. In addition, using such pollutant data is appropriate because the patients' information was hospital-based recorded, which patients usually visit for their sickness. Therefore, we can assume that patients mostly stayed in their habitats, and we can imply that patients had accumulatively consumed pollutants, resulting in having precisely long-term exposure to pollutant concentrations. Another strength of this work is that information on liver cancer patients was collected from a considerable number of patients (*N* = 10,859) for 18 years.

It may be necessary to address some of these identified risk factors to reduce the mortality risk of liver cancer patients. For example, efforts should be made to encourage people to stop smoking and consuming alcohol, especially those with a high risk of contracting liver cancer. To improve the survival probability, it may be advantageous to focus on early cancer detection and treatment rather than wait until the cancer is in the metastatic stage. In addition, mitigating environmental factors such as air pollution is crucial for reducing the mortality risk of liver cancer patients. Overall, addressing

individual and societal level risk factors is required to effectively reduce the mortality risk of liver cancer. This means that early diagnosis of liver cancer and tobacco control may be more critical for the prognosis of liver cancer in northern Thailand.

The strength of this study is that it is the first in which the mortality risk and risk factors associated with liver cancer were examined in upper northern Thailand using extended time-varying covariates (PM_{2.5}, PM₁₀, NO₂, SO₂, CO, O₃ levels) retrospectively over 15 years. However, this study still has some limitations. First, we were unable to access other important risk factors for liver cancer: for instance, viral hepatitis status and the amount of alcohol consumption. Not including the latter data could have potentially biased the results as they would have helped to shed light on why alcohol-use history was not significant in the multivariable analysis. Second, the focus of this study was on patients living in the northern region of Thailand, so generalization of the findings is not possible. Since we did not compare the mortality of liver cancer patients and risk factors in other areas and settings, larger and more diverse study populations incorporating these would help to confirm the findings from our study. Third, several variables in this study contained missing values. We handled this issue using multivariate imputation based on regression, which could have introduced bias in the results. This might have been mitigated by using the Multiple Imputation by Chained Equations approach. Next, we considered keeping the BMI, age at diagnosis, and air pollutant levels as categorical variables even though dichotomization of these and the continuous variables could have led to confounding. In addition, we focused on the all-cause mortality of the patients and did not include competing events such as loss to follow-up or death from other causes in the analysis. Thus, the mortality rates reported in this study might be biased due to competing events and should be viewed with caution. Finally, the annually averaged pollutant concentrations as time-varying covariates used in this study might not accurately reflect individual-level exposure to air pollution over time. Moreover, although most of the study

participants probably resided in the study area due to cultural and occupational reasons, some may have moved or spent time in other areas with different pollution levels. Although biological measures such as pollutant levels in blood samples would have more accurately determined the levels of air pollutant exposure of the participants, these data are not available in Thailand. Thus, the interpretation of our results should be treated with caution. A further prospective study using more precise data including biological measures might provide more precise findings. Next, including all of the air pollutants as variables caused multicollinearity issues in the multivariable model. Thus, we only retained PM_{2.5} since it has previously been reported to have a significant association with liver cancer mortality (35, 38). Using a different statistical model capable of addressing the multicollinearity issue could help to uncover the cumulative effects of multiple air pollutants on liver cancer mortality. In addition, we only examined the effect of air pollution on people already diagnosed with liver cancer. A future investigation of the effect of long-term exposure to air pollution, especially during early life, on liver cancer incidence may provide more insights.

5 Conclusion

Based on this retrospective cohort study, we found an association between mortality risk and exposure to a time-updated local concentration of PM_{2.5} > 40 µg/m³ in liver cancer patients who lived in Northern Thailand. Being male, aged >60 years old, and having a history of smoking were also significant deleterious factors. These findings provide health information that will encourage policymakers to combat air pollution in this area. However, the interpretation of our results should be treated with caution and further prospective research is needed to confirm our findings.

Data availability statement

The data analyzed in this study is subject to the following licenses/restrictions: The datasets generated during and/or analysed during the current study are available from the corresponding author on reasonable request. Requests to access these datasets should be directed to Imjai Chitapanarux, imjai.chitapanarux@cmu.ac.th.

Ethics statement

The studies involving humans were approved by the Research Ethics Committee of the Faculty of Medicine at Chiang Mai University. The studies were conducted in accordance with the local legislation and institutional requirements. The ethics committee/institutional review board waived the requirement of written informed consent for

participation from the participants or the participants' legal guardians/next of kin because patient consent was waived due to anonymous data recorded in the present study.

Author contributions

NT: Conceptualization, Formal analysis, Writing – original draft, Writing – review & editing. TC: Data curation, Resources, Writing – review & editing. AC: Data curation, Resources, Writing – review & editing. SC: Data curation, Resources, Writing – review & editing. PT: Conceptualization, Formal analysis, Writing – original draft, Writing – review & editing. NN: Writing – original draft, Writing – review & editing. PS: Formal analysis, Writing – review & editing. ST: Formal analysis, Writing – review & editing. TS: Data curation, Resources, Writing – review & editing. PH: Data curation, Resources, Writing – review & editing. IC: Conceptualization, Data curation, Funding acquisition, Resources, Writing – review & editing.

Funding

The author(s) declare that financial support was received for the research, authorship, and/or publication of this article. This research project was supported by Fundamental Fund 2023, Chiang Mai University, Thailand (FF66/015).

Acknowledgments

We acknowledged Chiang Mai Cancer Registry, Maharaj Nakorn Chiang Mai Hospital, Faculty of Medicine and Chiang Mai University for supporting the current study. This research project was supported by Fundamental Fund 2023, Chiang Mai University, Thailand (FF66/015).

Conflict of interest

The authors declare that the research was conducted in the absence of any commercial or financial relationships that could be construed as a potential conflict of interest.

Publisher's note

All claims expressed in this article are solely those of the authors and do not necessarily represent those of their affiliated organizations, or those of the publisher, the editors and the reviewers. Any product that may be evaluated in this article, or claim that may be made by its manufacturer, is not guaranteed or endorsed by the publisher.

References

1. Sung H, Ferlay J, Siegel RL, Laversanne M, Soerjomataram I, Jemal A, et al. Global cancer statistics 2020: GLOBOCAN estimates of incidence and mortality worldwide for 36 cancers in 185 countries. *CA Cancer J Clin.* (2021) 71:209–49. doi: 10.3322/caac.21660
2. The Global Cancer Observatory. Liver Cancer in worldwide. (2022). Available at: <https://gco.iarc.fr/today/data/factsheets/cancers/11-Liver-fact-sheet.pdf> (Accessed January 10, 2023).
3. The Global Cancer Observatory. Cancer in Thailand. (2022). Available at: <https://gco.iarc.fr/today/data/factsheets/populations/764-thailand-fact-sheets.pdf> (Accessed January 12, 2023).
4. Bray F, Møller B. Predicting the future burden of cancer. *Nat Rev Cancer.* (2006) 6:63–74. doi: 10.1038/nrc1781

5. Ferlay J, Laversanne M, Ervik M, Lam F, Colombet M, Mery L, et al. Global cancer observatory: cancer tomorrow. (2020). Available at: <https://gco.iarc.fr/tomorrow/en> (accessed January 15, 2023).
6. Yang JD, Hainaut P, Gores GJ, Amadou A, Plymoth A, Roberts LR. A global view of hepatocellular carcinoma: trends, risk, prevention and management. *Nat Rev Gastroenterol Hepatol*. (2019) 16:589–604. doi: 10.1038/s41575-019-0186-y
7. El-Serag HB. Epidemiology of viral hepatitis and hepatocellular carcinoma. *Gastroenterology*. (2012) 142:1264–1273.e1. doi: 10.1053/j.gastro.2011.12.061
8. Coughlin SS, Calle EE, Teras LR, Petrelli J, Thun MJ. Diabetes mellitus as a predictor of cancer mortality in a large cohort of US adults. *Am J Epidemiol*. (2004) 159:1160–7. doi: 10.1093/aje/kwh161
9. Davila JA, Morgan RO, Shaib Y, McGlynn KA, El-Serag HB. Diabetes increases the risk of hepatocellular carcinoma in the United States: a population based case control study. *Gut*. (2005) 54:533–9. doi: 10.1136/gut.2004.052167
10. Qi Y, Fan L, Ran D, Xu J, Wang Y, Wu J, et al. Main risk factors of type 2 diabetes mellitus with nonalcoholic fatty liver disease and hepatocellular carcinoma. *J Oncol*. (2021) 2021:7764817. doi: 10.1155/2021/7764817
11. Younossi ZM, Koenig AB, Abdelatif D, Fazel Y, Henry L, Wymer M. Global epidemiology of nonalcoholic fatty liver disease—meta-analytic assessment of prevalence, incidence, and outcomes. *Hepatology*. (2016) 64:73–84. doi: 10.1002/hep.28431
12. Patrick JL, Campbell PT, Koshiol J, Thistle JE, Andreotti G, Beane-Freeman LE, et al. Tobacco, alcohol use and risk of hepatocellular carcinoma and intrahepatic cholangiocarcinoma: the liver Cancer pooling project. *Br J Cancer*. (2018) 118:1005–12. doi: 10.1038/s41416-018-0007-z
13. Kawamura Y, Arase Y, Ikeda K, Akuta N, Kobayashi M, Saitoh S, et al. Effects of alcohol consumption on hepatocarcinogenesis in Japanese patients with fatty liver disease. *Clin Gastroenterol Hepatol*. (2016) 14:597–605. doi: 10.1016/j.cgh.2015.11.019
14. Setiawan VW, Wei PC, Hernandez BY, Lu SC, Monroe KR, Le Marchand L, et al. Disparity in liver cancer incidence and chronic liver disease mortality by nativity in Hispanics: the multiethnic cohort. *Cancer*. (2016) 122:1444–52. doi: 10.1002/cncr.29922
15. Michikawa T, Inoue M, Sawada N, Iwasaki M, Tanaka Y, Shimazu T, et al. Development of a prediction model for 10-year risk of hepatocellular carcinoma in middle-aged Japanese: the Japan public health center-based prospective study cohort II. *Prev Med*. (2012) 55:137–43. doi: 10.1016/j.ypmed.2012.05.017
16. Ohishi W, Fujiwara S, Cologne JB, Suzuki G, Akahoshi M, Nishi N, et al. Risk factors for hepatocellular carcinoma in a Japanese population: a nested case-control study. *Cancer Epidemiol Biomarkers Prev*. (2008) 17:846–54. doi: 10.1158/1055-9965.EPI-07-2806
17. Yi SW, Choi JS, Yi JJ, Lee YH, Han KJ. Risk factors for hepatocellular carcinoma by age, sex, and liver disorder status: a prospective cohort study in Korea. *Cancer*. (2018) 124:2748–57. doi: 10.1002/cncr.31406
18. Park H, Shin SK, Joo I, Song DS, Jang JW, Park JW. Systematic review with meta-analysis: low-level alcohol consumption and the risk of liver cancer. *Gut Liver*. (2020) 14:792–807. doi: 10.5009/gnl19163
19. Pinyopornpanish K, Khoudari G, Saleh MA, Angkurawaranon C, Pinyopornpanish K, Mansoor E, et al. Hepatocellular carcinoma in nonalcoholic fatty liver disease with or without cirrhosis: a population-based study. *BMC Gastroenterol*. (2021) 21:394. doi: 10.1186/s12876-021-01978-0
20. US Department of Health and Human Services. The health consequences of Smoking—50 years of Progress: A report of the surgeon general. Atlanta: US Department of Health and Human Services (2014).
21. Palmer WC, Patel T. Are common factors involved in the pathogenesis of primary liver cancers? A meta-analysis of risk factors for intrahepatic cholangiocarcinoma. *J Hepatol*. (2012) 57:69–76. doi: 10.1016/j.jhep.2012.02.022
22. Zheng Z, Xu X, Zhang X, Wang A, Zhang C, Hüttemann M, et al. Exposure to ambient particulate matter induces a NASH-like phenotype and impairs hepatic glucose metabolism in an animal model. *J Hepatol*. (2013) 58:148–54. doi: 10.1016/j.jhep.2012.08.009
23. Dybdahl M, Risom L, Møller P, Autrup H, Wallin H, Vogel U, et al. DNA adduct formation and oxidative stress in colon and liver of big blue rats after dietary exposure to diesel particles. *Carcinogenesis*. (2003) 24:1759–66. doi: 10.1093/carcin/bgg147
24. Danielsen PH, Risom L, Wallin H, Autrup H, Vogel U, Loft S, et al. DNA damage in rats after a single oral exposure to diesel exhaust particles. *Mutat Res*. (2008) 637:49–55. doi: 10.1016/j.mrfmmm.2007.06.011
25. Laing S, Wang G, Briazova T, Zhang C, Wang A, Zheng Z, et al. Airborne particulate matter selectively activates endoplasmic reticulum stress response in the lung and liver tissues. *Am J Physiol Cell Physiol*. (2010) 299:C736–49. doi: 10.1152/ajpcell.00529.2009
26. Kim JW, Park S, Lim CW, Lee K, Kim B. The role of air pollutants in initiating liver disease. *Toxicol Res*. (2014) 30:65–70. doi: 10.5487/TR.2014.30.2.065
27. Li D, Li Y, Li G, Zhang Y, Li J, Chen H. Fluorescent reconstitution on deposition of PM_{2.5} in lung and extrapulmonary organs. *Proc Natl Acad Sci USA*. (2019) 116:2488–93. doi: 10.1073/pnas.1818134116
28. Brook RD, Brook JR, Rajagopalan S. Air pollution: the “heart” of the problem. *Curr Hypertens Rep*. (2003) 5:32–9. doi: 10.1007/s11906-003-0008-y
29. Nikam J, Archer D, Nopsert C. Air quality in Thailand: Understanding the regulatory context. Stockholm: Environment Institute (2021).
30. IQ Air. 2021 world Air quality report: Region & City PM2.5 ranking. (2021). Available at: <https://www.iqair.com/world-most-polluted-cities/world-air-quality-report-2021-en.pdf> (accessed January 15, 2023).
31. IQ Air. 2020 world Air quality report: Region & City PM2.5 ranking. (2020). Available at: <https://www.iqair.com/world-most-polluted-cities/world-air-quality-report-2020-en.pdf> (accessed January 15, 2023).
32. IQ Air. 2019 world Air quality report: Region & City PM2.5 ranking. (2019). Available at: <https://www.iqair.com/world-most-polluted-cities/world-air-quality-report-2019-en.pdf> (accessed January 15, 2023).
33. Suriyawong P, Chueter S, Samae H, Piriyaakarnsakul S, Amin M, Furuuchi M, et al. Airborne particulate matter from biomass burning in Thailand: recent issues, challenges, and options. *Heliyon*. (2023) 9:e14261. doi: 10.1016/j.heliyon.2023.e14261
34. Lee CH, Hsieh SY, Huang WH, Wang IK, Yen TH. Association between ambient particulate matter 2.5 exposure and mortality in patients with hepatocellular carcinoma. *Int J Environ Res Public Health*. (2019) 16:2490. doi: 10.3390/ijerph16142490
35. Chin WS, Pan SC, Huang CC, Chen PJ, Guo YL. Exposure to air pollution and survival in follow-up after hepatocellular carcinoma. *Liver Cancer*. (2022) 11:474–82. doi: 10.1159/000525346
36. Deng H, Eckel SP, Liu L, Lurmann FW, Cockburn MG, Gilliland FD. Particulate matter air pollution and liver cancer survival. *Int J Cancer*. (2017) 141:744–9. doi: 10.1002/ijc.30779
37. Coleman NC, Burnett RT, Higbee JD, Lefler JS, Merrill RM, Ezziati M, et al. Cancer mortality risk, fine particulate air pollution, and smoking in a large, representative cohort of US adults. *Cancer Causes Control*. (2020) 31:767–76. doi: 10.1007/s10552-020-01317-w
38. Gan T, Bambrick H, Tong S, Hu W. Air pollution and liver cancer: a systematic review. *J Environ Sci*. (2023) 126:817–26. doi: 10.1016/j.jes.2022.05.037
39. Austin PC, Latouche A, Fine JP. A review of the use of time-varying covariates in the Fine-gray subdistribution hazard competing risk regression model. *Stat Med*. (2020) 39:103–13. doi: 10.1002/sim.8399
40. Benedetti A, Morcrette JJ, Boucher O, Dethof A, Engelen RJ, Fisher M, et al. Aerosol analysis and forecast in the European Centre for Medium-Range Weather Forecasts integrated forecast system: 2. Data assimilation. *J Geophys Res*. (2009) 114:D13205. doi: 10.1029/2008JD011115
41. Morcrette JJ, Boucher O, Jones L, Salmond D, Bechtold P, Beljaars A, et al. Aerosol analysis and forecast in the European Centre for Medium-Range Weather Forecasts integrated forecast system: forward modeling. *J Geophys Res*. (2009) 114:D06206. doi: 10.1029/2008JD011235
42. Inness A, Ades M, Agustí-Panareda A, Barré J, Benedictow A, Blechschmidt AM, et al. The CAMS reanalysis of atmospheric composition. *Atmos Chem Phys*. (2019) 19:3515–56. doi: 10.5194/acp-19-3515-2019
43. Little RJA, Rubin DB. Statistical analysis with missing data. New Jersey: John Wiley & Sons (2002).
44. Zhang Z, Reinikainen J, Adeleke KA, Pieterse ME, Groothuis-Oudshoorn CGM. Time-varying covariates and coefficients in cox regression models. *Ann Transl Med*. (2018) 6:121. doi: 10.21037/atm.2018.02.12
45. Weir CB, Jan A. BMI classification percentile and cut off points. Florida: StatPearls Publishing (2021).
46. Chaiteerakij R, Pan-Ngum W, Poovorawan K, Soonthornworasiri N, Treeprasertsuk S, Phaowasadi K. Characteristics and outcomes of cholangiocarcinoma by region in Thailand: a nationwide study. *World J Gastroenterol*. (2017) 23:7160–7. doi: 10.3748/wjg.v23.i39.7160
47. Mehta M, Chen LC, Gordon T, Rom W, Tang MS. Particulate matter inhibits DNA repair and enhances mutagenesis. *Mutat Res*. (2008) 657:116–21. doi: 10.1016/j.mrgentox.2008.08.015
48. Waisberg M, Joseph P, Hale B, Beyersmann D. Molecular and cellular mechanisms of cadmium carcinogenesis. *Toxicology*. (2003) 192:95–117. doi: 10.1016/s0300-483x(03)00305-6
49. Kelly FJ. Oxidative stress: its role in air pollution and adverse health effects. *Occup Environ Med*. (2003) 60:612–6. doi: 10.1136/oem.60.8.612
50. Danielsen PH, Loft S, Møller P. DNA damage and cytotoxicity in type II lung epithelial (A549) cell cultures after exposure to diesel exhaust and urban street particles. *Part Fibre Toxicol*. (2008) 5:6. doi: 10.1186/1743-8977-5-6
51. Pan WC, Wu CD, Chen MJ, Huang YT, Chen CJ, Su HJ, et al. Fine particle pollution, alanine transaminase, and liver cancer: a Taiwanese prospective cohort study (REVEAL-HBV). *J Natl Cancer Inst*. (2015) 108:1–7. doi: 10.1093/jnci/djv341
52. Kim KN, Lee H, Kim JH, Jung K, Lim YH, Hong YC. Physical activity-and alcohol-dependent association between air pollution exposure and elevated liver enzyme levels: an elderly panel study. *J Prev Med Public Health*. (2015) 48:151–69. doi: 10.3961/jpmph.15.014
53. Markevych I, Wolf K, Hampel R, Breitner S, Schneider A, von Klot S, et al. Air pollution and liver enzymes. *Epidemiology*. (2013) 24:934–5. doi: 10.1097/EDE.0b013e3182a77600

54. Aleksandrova K, Boeing H, Nöthlings U, Jenab M, Fedirko V, Kaaks R, et al. Inflammatory and metabolic biomarkers and risk of liver and biliary tract cancer. *Hepatology*. (2014) 60:858–71. doi: 10.1002/hep.27016
55. Stepien M, Fedirko V, Duarte-Salles T, Ferrari P, Freisling H, Trepo E, et al. Prospective association of liver function biomarkers with development of hepatobiliary cancers. *Cancer Epidemiol*. (2016) 40:179–87. doi: 10.1016/j.canep.2016.01.002
56. Wong CM, Tsang H, Lai HK, Thomas GN, Lam KB, Chan KP, et al. Cancer mortality risks from long-term exposure to ambient fine particle. *Cancer Epidemiol Biomarkers Prev*. (2016) 25:839–45. doi: 10.1158/1055-9965.EPI-15-0626
57. Risom L, Møller P, Loft S. Oxidative stress-induced DNA damage by particulate air pollution. *Mutat Res*. (2005) 592:119–37. doi: 10.1016/j.mrfmmm.2005.06.012
58. Mantovani A, Allavena P, Sica A, Balkwill F. Cancer-related inflammation. *Nature*. (2008) 454:436–44. doi: 10.1038/nature07205
59. Mills NL, Donaldson K, Hadoke PW, Boon NA, MacNee W, Cassee FR, et al. Adverse cardiovascular effects of air pollution. *Nat Clin Pract Cardiovasc Med*. (2009) 6:36–44. doi: 10.1038/ncpcardio1399
60. Beamish LA, Osornio-Vargas AR, Wine E. Air pollution: an environmental factor contributing to intestinal disease. *J Crohns Colitis*. (2011) 5:279–86. doi: 10.1016/j.crohns.2011.02.017
61. Turner MC, Andersen ZJ, Baccarelli A, Diver WR, Gapstur SM, Pope CA, et al. Outdoor air pollution and cancer: an overview of the current evidence and public health recommendations. *CA Cancer J Clin*. (2020) 70:460–79. doi: 10.3322/caac.21632
62. Serafini MM, Maddalon A, Iulini M, Galbiati V. Air pollution: possible interaction between the immune and nervous system? *Int J Environ Res Public Health*. (2022) 19:16037. doi: 10.3390/ijerph192316037
63. Turner MC, Jerrett M, Pope CA 3rd, Krewski D, Gapstur SM, Diver WR, et al. Long-term ozone exposure and mortality in a large prospective study. *Am J Respir Crit Care Med*. (2016) 193:1134–42. doi: 10.1164/rccm.201508-1633OC
64. American Cancer Society. Available at: <https://www.cancer.org/content/dam/CRC/PDF/Public/8896.00.pdf> (accessed June 17, 2024); (2023).
65. Kamsa-ard S, Kamsa-ard S, Luvira V, Suwanrungruang K, Vatanasapt P, Wiangnon S. Risk factors for cholangiocarcinoma in Thailand: a systematic review and meta-analysis. *Asian Pac J Cancer Prev*. (2018) 19:605–14. doi: 10.22034/APJCP.2018.19.3.605
66. Nakharutai N, Chitapanarux I, Traisathit P, Srikummoon P, Pojchamarnwiputh S, Inmutto N, et al. Prediction of survival and analysis of prognostic factors for hepatocellular carcinoma: a 20-year of imaging diagnosis in upper northern Thailand. *BMC Cancer*. (2023) 23:1063. doi: 10.1186/s12885-023-11429-6