



## OPEN ACCESS

## EDITED BY

Worrador Phairuang,  
Kanazawa University, Japan

## REVIEWED BY

Rizki Andre Handika,  
University of Jambi, Indonesia  
Yaowatat Boongla,  
Thammasat University, Thailand

## \*CORRESPONDENCE

Shuangming Cai  
✉ bbm2006@126.com

<sup>†</sup>These authors have contributed equally to this work and share first authorship

RECEIVED 04 September 2023

ACCEPTED 23 October 2023

PUBLISHED 07 November 2023

## CITATION

Xiao H, Huang S, Yang W, Zhang W, Xiao H and Cai S (2023) Causal association between air pollution and frailty: a Mendelian randomization study.  
*Front. Public Health* 11:1288293.  
doi: 10.3389/fpubh.2023.1288293

## COPYRIGHT

© 2023 Xiao, Huang, Yang, Zhang, Xiao and Cai. This is an open-access article distributed under the terms of the [Creative Commons Attribution License \(CC BY\)](https://creativecommons.org/licenses/by/4.0/). The use, distribution or reproduction in other forums is permitted, provided the original author(s) and the copyright owner(s) are credited and that the original publication in this journal is cited, in accordance with accepted academic practice. No use, distribution or reproduction is permitted which does not comply with these terms.

# Causal association between air pollution and frailty: a Mendelian randomization study

Haixia Xiao<sup>1†</sup>, Shan Huang<sup>2†</sup>, Wei Yang<sup>3</sup>, Wenni Zhang<sup>2</sup>, Huanshun Xiao<sup>2</sup> and Shuangming Cai<sup>2\*</sup>

<sup>1</sup>Department of Obstetrics, Guangdong Women and Children Hospital, Guangzhou, China,

<sup>2</sup>Department of MICU, Guangdong Women and Children Hospital, Guangzhou, China, <sup>3</sup>Department of Internal Medicine, Guangdong Women and Children Hospital, Guangzhou, China

**Backgrounds:** Frailty is a significant problem for older persons since it is linked to a number of unfavorable consequences. According to observational researches, air pollution may raise the risk of frailty. We investigated the causal association between frailty and air pollution (including PM<sub>2.5</sub>, PM<sub>2.5–10</sub>, PM<sub>10</sub>, nitrogen dioxide, and nitrogen oxides) using Mendelian randomization approach.

**Methods:** We conducted MR analysis using extensive publically accessible GWAS (genome-wide association studies) summary data. The inverse variance weighted (IVW) method was employed as the primary analysis method. The weighted median model, MR-Egger, simple model, and weighted model approaches were chosen for quality control. The Cochran's Q test was utilized to evaluate heterogeneity. Pleiotropy is found using the MR-Egger regression test. The MR-PRESSO method was used to recognize outliers. The leave-one-out strategy was used to conduct the sensitivity analysis.

**Results:** MR results suggested that PM<sub>2.5</sub> was statistically significantly associated with frailty [odds ratio (OR) = 1.33; 95% confidence interval (CI) = 1.12–1.58,  $p = 0.001$ ] in IVW method. We observed no statistical association between PM<sub>2.5–10</sub> (OR = 1.00, 95% CI = 0.79–1.28,  $p = 0.979$ ), PM<sub>10</sub> (OR = 0.91, 95% CI = 0.75–1.11,  $p = 0.364$ ), nitrogen dioxide (OR = 0.98, 95% CI = 0.85–1.12,  $p = 0.730$ ), nitrogen oxides (OR = 1.15, 95% CI = 0.98–1.36,  $p = 0.086$ ) and frailty. There was no pleiotropy in the results. The sensitivity analysis based on the leave-one-out method showed that the individual single nucleotide polymorphisms (SNPs) did not affect the robustness of the results.

**Conclusion:** The current MR investigation shows a causal association between PM<sub>2.5</sub> and frailty. Frailty's detrimental progression may be slowed down with the help of air pollution prevention and control.

## KEYWORDS

air pollution, PM<sub>2.5</sub>, frailty, causal association, GWAS, Mendelian randomization

## 1. Introduction

Frailty is a complicated age-related clinical syndrome marked by vulnerability, significant dysregulation in an aging body's biologically complex dynamical system, and increased susceptibility to stress (1–3). Epidemiological evidence emphasizes the increasing frequency of frailty in older adults as the population ages at an accelerated rate. For instance, a thorough

meta-analysis of 57 research revealed that around 26.8% of the older population suffers from frailty (4). Frailty is not only a major risk factor for mortality in older adults, but is associated with a number of unfavorable events, such as falls (5), fractures (6), hospitalization (7), and reduced quality of life (8). Thus, frailty has become an important public health problem and a global health burden.

Because of the potential health consequences, air pollution is the leading reversible environmental factor linked to early mortality or disability (9). Particulate matter (PM) or gases like ozone, carbon monoxide, nitrogen dioxide (NO<sub>2</sub>), sulfur dioxide, and nitrogen oxides (NOx) are popular categories for air pollution (10). The most frequently studied pollutant is fine particulate matter with a diameter of less than 2.5 micrometers (PM<sub>2.5</sub>), followed by nitrogen dioxide (NO<sub>2</sub>) and nitrogen oxides (NOx), with few research concentrating on other pollutants. There is growing epidemiologic evidence that exposure to air pollution is associated with a variety of health problems, including respiratory disease (11), cardiovascular disease (12), cerebrovascular disease (13), mental health (14), and cancer (15, 16). The largest health issue is PM<sub>2.5</sub> because it is likely that it contains a more hazardous mixture and because it enters the lungs more deeply than larger particles (17).

Some evidence from observational studies suggests a link between air pollution and frailty. A large cross-sectional study that included 220,079 subjects aged 60 years and older demonstrated that frailty and pre-frailty were substantially correlated with exposure to air pollutants such as PM<sub>2.5</sub>, PM<sub>2.5-10</sub>, or NOx (18). In addition, a Korean study also showed that PM<sub>2.5</sub> and PM<sub>10</sub> exposures were commonly associated with pre-frailty and frailty among 2,912 community-dwelling individuals aged ≥ 70 years (19). More recently, results from a related study of middle-aged and older Chinese adults also showed that Long-term exposure to PM was linked to a greater incidence of frailty deterioration (20). However, these observational studies may have methodological problems, such as homologous or reverse causation, leading to differences in results that may be due to residual confounders or reverse causation in observational studies. To address these concerns and establish a more robust causal relationship, randomized controlled trials (RCTs) stand as the preferred methodological approach, as they circumvent the confounding variables inherent to observational research. However, in the context of frailty and its association with air pollution, it is important to note that there is a notable absence of RCTs specifically designed to investigate this relationship.

Mendelian randomization (MR) is increasingly used in assessing whether correlations are consistent with causal hypotheses and can solve the confounding and reverse causality issues in observational studies. MR studies are instrumental variable analyses that use genetic variants (single nucleotide polymorphisms; SNPs) as exposed instrumental variables (21). MR studies are often described as “natural RCTs” because the random assignment of alleles during meiosis is conceptually similar to an RCT design. In this study, the MR approach makes use of genetic variants that exist in nature and which are

considered to be randomly assigned. This means that there is no selective relationship between an individual carrying a certain genetic variant and exposure to air pollution, and therefore it can be considered as a natural random assignment. In addition, MR methods can reduce the possibility that confounding factors (e.g., age, gender, lifestyle, etc.) may interfere with the results of a study by analyzing the relationship between genetic variants and frailty. Furthermore, MR methods provide stronger causal inference. Therefore, the use of MR methods to study the association between air pollution and frailty can overcome some of the difficulties in traditional observational studies and provide more reliable causal evidence, which helps us to study the association between air pollution and frailty in greater depth while reducing the interference of confounding factors. As a result, in order to further investigate whether there is a connection between air pollution and frailty, we used extensive, publicly available genome-wide association study (GWAS) data with frailty as the endpoint and PM<sub>2.5</sub>, PM<sub>2.5-10</sub>, PM<sub>10</sub>, nitrogen dioxide (NO<sub>2</sub>), and nitrogen oxides (NOx) as the exposure factors.

## 2. Materials and methods

### 2.1. Study design

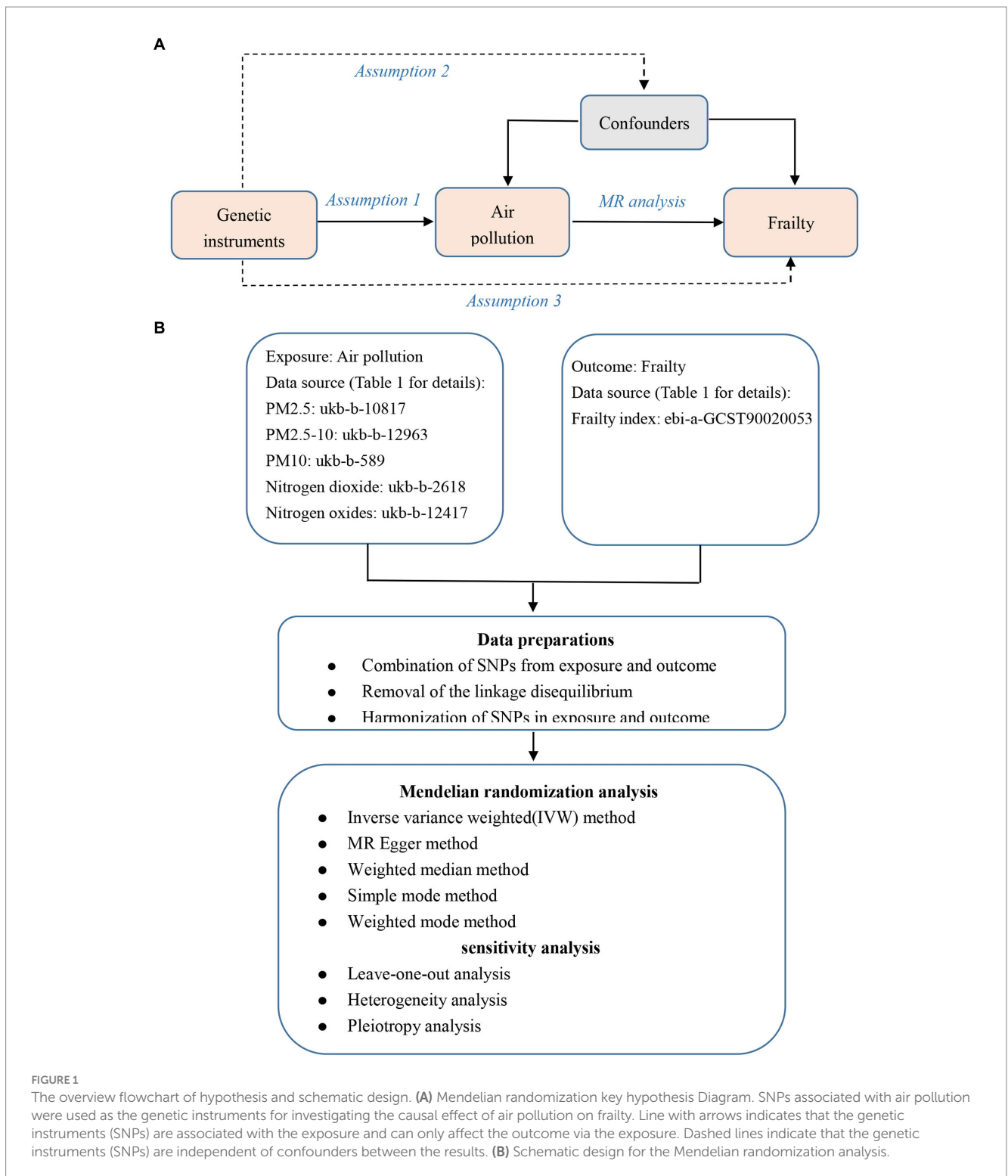
Our study is based on the Mendelian randomization design, which is predicated on three key tenets: (1) that instrumental variants are related to exposure; (2) that they are not related to outcome via a confounding pathway; and (3) that they do not directly affect outcome, only perhaps indirectly through exposure (Figure 1A). The exposure factor in this study was air pollution (PM<sub>2.5</sub>, PM<sub>2.5-10</sub>, PM<sub>10</sub>, nitrogen dioxide, and nitrogen oxides), the instrumental variables (IVs) were single nucleotide polymorphisms (SNPs) strongly related to air pollution, and the outcome variable was frailty. Here, we used a two-sample MR analysis to determine the causative relationships between frailty and air pollution. Figure 1 shows the flowchart for this Mendelian randomization investigation.

### 2.2. Data sources

Table 1 lists the data sources in detail. As exposures, we chose air pollution (including PM<sub>2.5</sub>, PM<sub>2.5-10</sub>, PM<sub>10</sub>, nitrogen dioxide, and nitrogen oxides), with data on all air pollution coming from UK Biobank, a sizable prospective study with more than 500,000 participants from the United Kingdom, and for which data on phenotypes, genetic information, and genome-wide genotyping have been published (22). Participants included in the GWAS summary datasets for PM<sub>2.5</sub> (GWAS ID: ukb-b-10817), PM<sub>2.5-10</sub> (GWAS ID: ukb-b-12963), PM<sub>10</sub> (GWAS ID: ukb-b-589), nitrogen dioxide (GWAS ID: ukb-b-2618), and nitrogen oxides (GWAS ID: ukb-b-12417) were 423,796, 423,796, 455,314, 456,380, 456,380 participants, respectively. All participants had given informed consent in the corresponding original studies.

The most recent meta-GWAS study concentrating on the genetic architecture of frailty was used to generate summary statistics for the relationships of the instrumental factors with frailty (23). The participants in this study were 10,616 Swedish

Abbreviations: PM, Particulate matter; NO<sub>2</sub>, Nitrogen dioxide; NOx, Nitrogen oxides; MR, Mendelian randomization; GWAS, Genome-wide association studies; IVs, Instrumental variables; IVW, Inverse variance weighted; SNPs, Single nucleotide polymorphisms; CI, Confidence interval; OR, Odds ratio; FI, Frailty index; LD, Linkage disequilibrium; CRP, C-reactive protein; OS, Oxidative stress.



participants from the TwinGene, aged 41–87, and 164,610 European participants from the UK Biobank, aged 60–70. The frailty index (FI), which is based on the accumulation of a number of health deficiencies over the course of a person's life, including symptoms, disabilities, and diagnosed diseases, was used in this meta-GWAS to characterize frailty. 49 and 44 self-reported baseline data variables from the UK Biobank and TwinGene, respectively, were used to derive the FI.

### 2.3. Selection of instrumental variables

As seen in Figure 1B, the genome-wide significance criterion for exposure was set at  $p < 5 \times 10^{-8}$  in order to satisfy assumption 1, however only PM<sub>10</sub> (ukb-b-589) was able to identify enough SNPs (24). The results of previous study demonstrated the low potential of weak instrumental variable bias in MR analysis following the linear regression of each genetic variant on risk variables at  $p < 1 \times 10^{-6}$  as a

TABLE 1 Overview of data sources in this two-sample MR study.

Exposures/ outcomes	Dataset	Sample size	Number of SNPs	Population	Consortium	Sex	Year	
Particulate matter (PM)	PM <sub>2.5</sub> um	ukb-b-10817	423,796	9,851,867	European	MRC-IEU	Males and females	2018
	PM <sub>2.5-10</sub> um	ukb-b-12963	423,796	9,851,867	European	MRC-IEU	Males and females	2018
	PM <sub>10</sub> um	ukb-b-589	455,314	9,851,867	European	MRC-IEU	Males and females	2018
Nitrogen dioxide	ukb-b-2618	456,380	9,851,867	European	MRC-IEU	Males and females	2018	
Nitrogen oxides	ukb-b-12417	456,380	9,851,867	European	MRC-IEU	Males and females	2018	
Frailty index	ebi-a- GCST90020053	175,226	7,589,717	European	NA	NA	2021	

PM, Particulate matter; MR, Mendelian randomization; SNPs, Single nucleotide polymorphisms; MRC-IEU, Medical Research Council Integrative Epidemiology Unit; NA, Not available.

screening threshold (25). Therefore, we reduced the genome-wide significance threshold of the remaining exposure (ukb-b-10817, ukb-b-12963, ukb-b-2618, and ukb-b-12417) to  $p < 1 \times 10^{-6}$  in order to pick sufficient SNPs as IVs associated with this significance level.

When extracting IVs,  $r^2 < 0.001$  and  $kb > 10,000$  were selected to eliminate SNPs with linkage disequilibrium (LD) (26). The proxy SNP in linkage disequilibrium ( $r^2 > 0.8$ ) was utilized if the chosen SNP was not included in the resultant GWAS (27). To make sure that the effect of these SNPs on exposure related to the same allele as the effect on outcome, palindromic SNPs were then eliminated.

Finally, for each SNP, we determined the  $R^2$  (28) and F-statistic (29) as described previously. The F statistic is used to determine whether a weak IV bias is present.  $R^2$  is the proportion of iron status variability. Each SNP we chose had an F-statistic of greater than 10, indicating that the genetic tests we chose accurately predicted the exposure (30). The Supplementary Table provide specific SNP information together with the matching  $R^2$  and F-statistic.

## 2.4. Mendelian randomization analysis

Using the inverse variance weighted (IVW) approach, the causal connection between air pollution and frailty was evaluated. Through the Wald ratio, IVW can obtain an estimate of the causal effect based on a single genetic IV and then choose a fixed effect model to carry out a meta-analysis of various estimates of the causal effect based on a single gene IV. This method can produce a trustworthy estimate of the causal effect and is frequently used in MR Analysis (25). To improve accuracy and stability, we included further verification using MR-Egger regression, weighted median, weighted mode, and simple mode (31). To determine whether pleiotropy in IVs existed and whether it had an impact on the outcomes, we utilized MR-Egger regression. If the MR-Egger intercept was close to zero or the significance level was greater than 0.05, it was determined that pleiotropy had no impact on IVs (32). Cochran's Q test was used to evaluate heterogeneity among IVs for the IVW approach (33). There was no heterogeneity, as evidenced by the finding of  $p > 0.05$ . The MR-PRESSO approach was additionally utilized to identify outliers (SNPs) and to offer a causal estimate when associated outliers are

eliminated (34). We performed a leave-one-out sensitivity test, removing each SNP one at a time, to see if any particular SNP affected our results after removing random errors from screening IVs (35).

## 2.5. Statistical analysis

All analyses were conducted with the "TwoSampleMR" (26) package and "MR-PRESSO" (34) in R Foundation version 4.2.2. The threshold of statistical significance for evidence is  $p < 0.05$ .

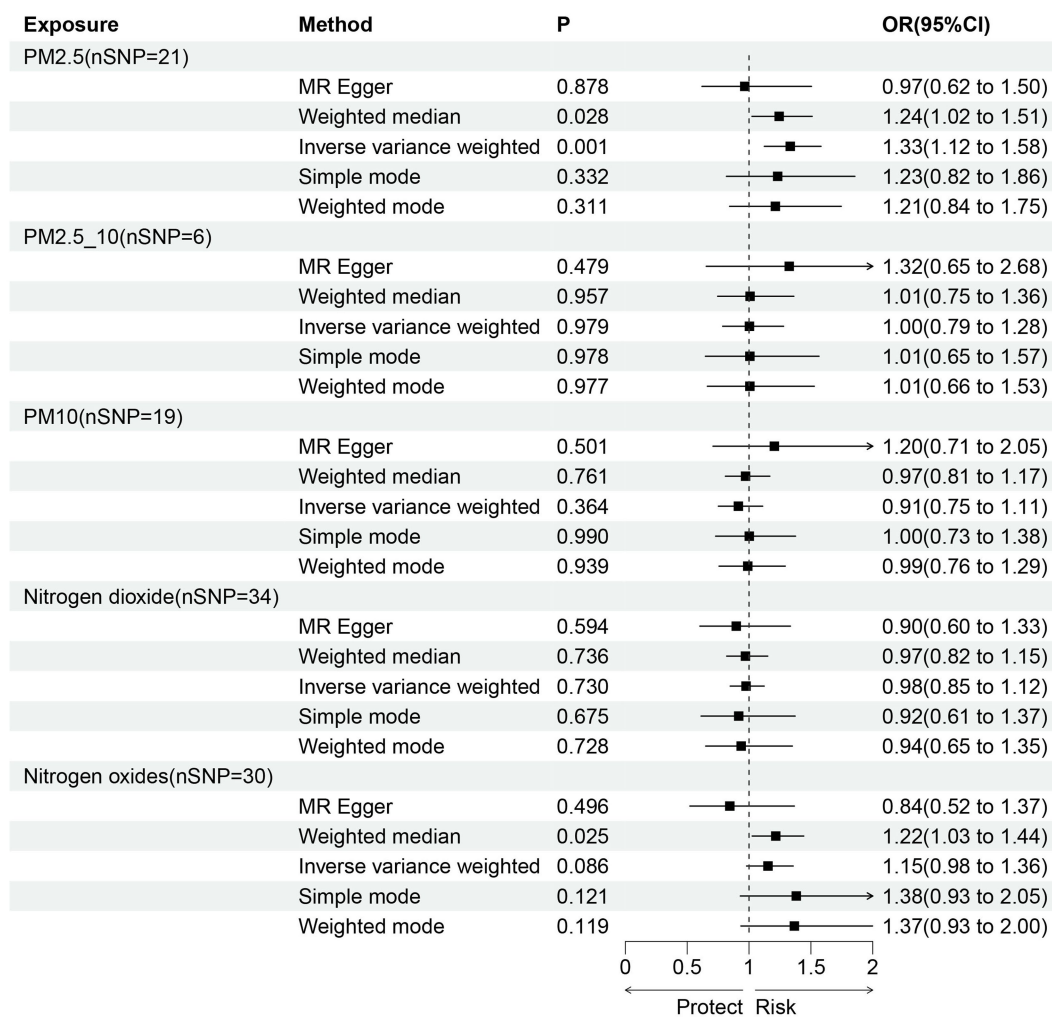
## 3. Results

### 3.1. Genetic IVs extraction of air pollution from the frailty GWAS dataset

In the present study, after removing chained imbalanced IVs from the frailty GWAS dataset, we identified a number of independent SNPs linked to following exposures ( $p < 1 \times 10^{-6}$ ): 21 strongly related SNPs to PM<sub>2.5</sub>, 6 strongly related SNPs to PM<sub>2.5-10</sub>, 34 strongly related SNPs to nitrogen dioxide, 30 strongly related SNPs to nitrogen oxides. We identified 19 independent SNPs with  $p < 5 \times 10^{-8}$  linked to PM<sub>10</sub>. The effect allele frequency (EAF) of SNPs in PM<sub>2.5</sub>, PM<sub>2.5-10</sub>, PM<sub>10</sub>, nitrogen dioxide and nitrogen oxides ranged from 0.004 to 0.658, 0.020 to 0.257, 0.015 to 0.640, 0.004 to 0.623 and 0.004 to 0.962, respectively. In addition, to exclude the potential impacts of weak IVs, we used F statistic to test the correlation strength of IVs with exposure, and no evidence of significant weak IVs among the selected SNPs were observed (all  $F > 10$ ), indicating that a weak instrumental bias was unlikely to affect the estimation of the causal effects. The Supplementary Table included information about these IVs in detail.

### 3.2. Mendelian randomization analysis

In the primary IVW analyses, following are the odds ratios (ORs) and 95% confidence intervals (CIs) of various exposures that our MR study showed: PM<sub>2.5</sub>: OR = 1.33, 95% CI = 1.12–1.58,  $p = 0.001$ ;



**FIGURE 2**  
The causal relationship between exposure to air pollution and outcomes in frailty. nSNP, number of SNPs; OR, odds ratio; CI, confidence interval.

PM<sub>2.5-10</sub>: OR=1.00, 95% CI=0.79–1.28, *p*=0.979; PM<sub>10</sub>: OR=0.91, 95% CI=0.75–1.11, *p*=0.364; nitrogen dioxide: OR=0.98, 95% CI=0.85–1.12, *p*=0.730; nitrogen oxides: OR=1.15, 95% CI=0.98–1.36, *p*=0.086 (Figure 2). As shown in the results, we discovered a causal association between PM<sub>2.5</sub> and frailty. Besides, the weighted median method also revealed a connection between PM<sub>2.5</sub> and the risk of frailty (OR=1.24, 95% CI=1.02–1.51, *p*=0.028; Figure 2). In the MR-Egger, weighted model, and simple model, these relationships remained but were not statistically significant (Figure 2). These results showed that the risk of frailty arose considerably with each standard error increase in the level of PM<sub>2.5</sub> exposure (Figures 2–4). Additionally, no evidence of causal relationships between PM<sub>2.5-10</sub>, PM<sub>10</sub>, nitrogen dioxide, nitrogen oxides and the risk of frailty was found in this study (Figures 2–4).

### 3.3. Pleiotropy and heterogeneity analysis

The results of the MR-Egger intercept test revealed no pleiotropy (*p*>0.05; Table 2). This showed that, independent of the corresponding exposures, none of the SNPs identified from exposures contribute to frailty. Heterogeneity was observed in our study (PM<sub>2.5</sub>, *p*=0.010,

*Q*=37.598; PM<sub>10</sub>, *p*<0.001 *Q*=44.526; Nitrogen dioxide, *p*=0.004 *Q*=58.330; Nitrogen dioxide, *p*<0.001 *Q*=64.132; Table 2).

### 3.4. Sensitivity analysis

Sensitivity analysis of the MR results was performed. Leave-one-out sensitivity analysis for the impact of PM<sub>2.5</sub> on frailty showed that all IV lines are on the right side of 0, and the results are unaffected significantly by the removal of any individual SNP (Figure 4). The fairly robust MR findings in this investigation indicate that PM<sub>2.5</sub> is a risk factor for frailty. Additionally, analyses of other exposures revealed that eliminating each SNP individually had little impact on the outcomes, indicating that no one SNP had a major impact on the estimates of the overall causal effect (Figure 4).

## 4. Discussion

In this MR analysis, we examined the causal relationship between air pollution (including PM<sub>2.5</sub>, PM<sub>2.5-10</sub>, PM<sub>10</sub>, nitrogen dioxide and nitrogen oxides) and frailty. We found that increasing PM<sub>2.5</sub>

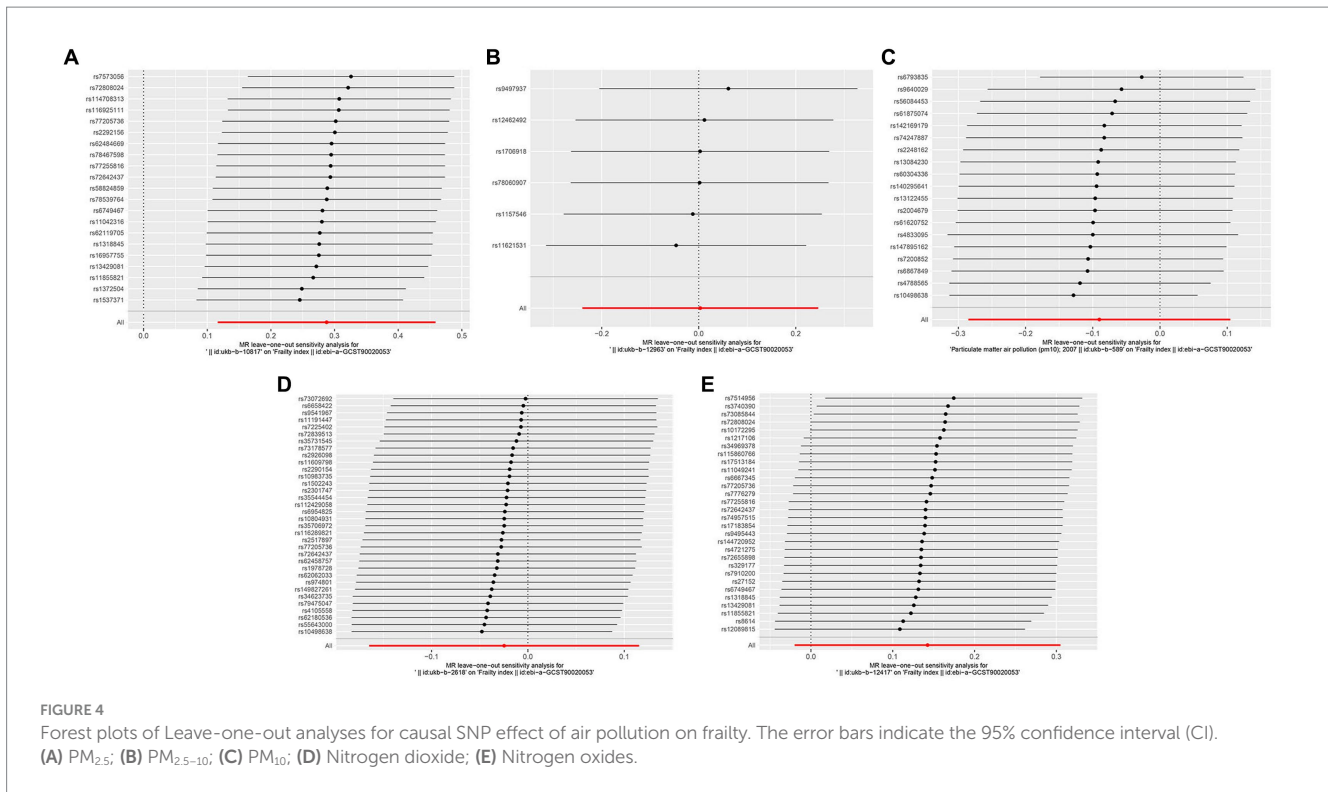


TABLE 2 Pleiotropy and heterogeneity test of air pollution genetic instrumental variables in GWAS for frailty.

Exposures	Pleiotropy test			Heterogeneity test		
	P	SE	Intercept	P	Q	Q <sub>-df</sub>
PM <sub>2.5</sub>	0.141	0.003	0.005	0.010	37.60	20
PM <sub>2.5-10</sub>	0.457	0.006	-0.005	0.899	1.62	5
PM <sub>10</sub>	0.289	0.005	-0.005	0.000	44.53	18
Nitrogen dioxide	0.659	0.003	0.001	0.004	58.33	33
Nitrogen oxides	0.189	0.004	0.005	0.000	64.13	29

GWAS, genome-wide association study; PM, Particulate matter; P, value of p; SE, standard error; Q, Q-value; Q<sub>-df</sub>, Q<sub>-degrees of freedom.</sub>

concentrations were associated with an increased risk of frailty in a European population in IVW method, with each standard deviation increase in PM<sub>2.5</sub> being associated with a 33% increase in the risk of frailty by using a threshold of  $p < 1 \times 10^{-6}$  for selection of instrumental variables (OR: 1.33; 95% CI: 1.12–1.58). The IVW method assumes that all genetic instruments are valid and that there is no horizontal pleiotropy (i.e., genetic variants only affect the frailty through the PM<sub>2.5</sub>). In addition, the weighted median approach which provides a causal estimate even when up to 50% of the genetic instruments are invalid also yielded significant results. However, the results of MR-Egger, weighted model and simple model tests were not significant. This result may be caused by residual pleiotropy. Furthermore, the results of the leave-one-out analysis and MR-Egger test were confirmed the robustness of this finding. In summary, our results suggest a strong causal relationship between PM<sub>2.5</sub> concentration and frailty risk. No causal association was observed

between other air pollutants (PM<sub>2.5-10</sub>, PM<sub>10</sub>, nitrogen dioxide and nitrogen oxides) and frailty.

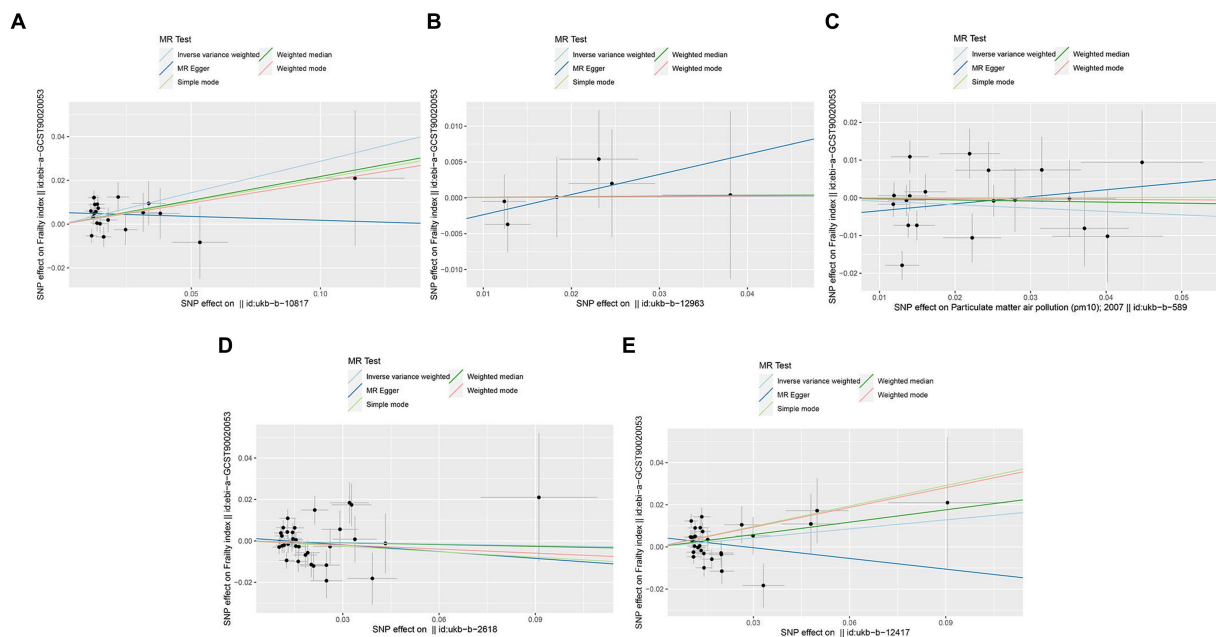
The relationship between frailty and air pollution is an area of research that has received much attention. Frailty is a syndrome of old age which is largely influenced by a combination of environmental and genetic factors. Our findings further confirmed the conclusions of a number of epidemiologic studies that air pollutants are risk factors for frailty. For example, Eckel et al. examined the effect of a history of frailty on the correlation between PM<sub>10</sub> and lung function using cohort data from adults aged  $\geq 65$  years in four US counties (36). In addition, a cross-sectional study reported that in Taiwan, frail adults aged  $\geq 65$  years had higher PM<sub>2.5</sub> exposures than healthy participants (37). As mentioned previously, in the cross-sectional study of older adults in Korea, PM<sub>2.5</sub>, PM<sub>10</sub>, and ozone were commonly associated with frailty in a dose-dependent relationship with the degree of frailty (19). PM<sub>2.5</sub> exposure was linked to an elevated risk of frailty in older persons living in rural areas in a sizable sample of community-based adults aged 50 and older from six middle-income nations (38). A nationwide prospective cohort study's findings revealed a consistent link between Chinese older persons' frailty and long-term PM<sub>2.5</sub> exposure, and the significant decrease in PM<sub>2.5</sub>-related frailty burden was mainly due to the mitigation of PM<sub>2.5</sub> (39). Similarly, a study by Guo et al. that included 13,910 participants aged  $\geq 45$  years showed that in middle-aged and older persons, long-term PM<sub>2.5</sub> exposure was linked to a higher chance of frailty deterioration and a lower risk of improvement (20). Currently, research on the causal connection between air pollution and the risk of frailty is lacking. Therefore, we conducted a genetic-level causal analysis of air pollution and frailty using a two-sample Mendelian randomization method. Our findings showed a significant causal link between PM<sub>2.5</sub> and the risk of frailty, which complements studies on the correlation between air pollutants and frailty.

PM<sub>2.5</sub> has multiple effects on the risk of frailty in European populations, including respiratory problems, cardiovascular disease. These health problems may increase the occurrence of frailty, especially for people who already have health problems (40). PM<sub>2.5</sub> particles are suspended in the air for long periods of time and are easily inhaled by the body. Once inhaled into the lungs, these tiny particles can cause a range of respiratory problems, including airway inflammation, bronchospasm and lung infections (41, 42). PM<sub>2.5</sub> particulate matter has also been linked to the onset and progression of cardiovascular disease, increasing the risk of cardiovascular diseases such as heart disease, high blood pressure, and stroke (43–45). In Europe, cardiovascular disease is one of the major contributors to frailty (46).

The molecular mechanisms by which PM<sub>2.5</sub> increases the risk of frailty are unknown. Evidence accumulated over the past two decades suggests that air pollution, along with consistent exposure to environment PM<sub>2.5</sub>, induces inflammation, persistent systemic oxidative stress, stimulation of the autonomic nervous system, and genetic and epigenetic alterations (47). PM<sub>2.5</sub> poses an even greater health threat because of its small particle size, which enables it to cross several organ blood barriers, including those in the brain, liver, and kidneys, and reach the distal lungs, including the alveoli (48, 49). According to earlier research, elevated PM<sub>2.5</sub> levels due to traffic are linked to different inflammatory marker responses (50). Additionally, it has been discovered that PM<sub>2.5</sub> increases oxidative stress in the body, inhibits endogenous antioxidant enzyme activity and gene expression, and promotes dysfunction in a number of organs and systems (51–53). And factors such as inflammatory response and oxidative stress are believed to be pathological mechanisms leading to frailty (54). Studies have revealed that frail populations are more likely to experience low-grade inflammation, and that a high inflammatory state during

middle age increases the possibility of developing frail in old age (55, 56). By encouraging the breakdown of muscle protein, inflammatory substances like C-reactive protein (CRP) and IL-6 with increasing quantities hasten the onset of frailty (57). Additionally, oxidative stress (OS) is also crucial in encouraging the emergence of frailty. Older persons with frailty have higher levels of OS and lower levels of antioxidants, according to a meta-analysis by Soysal et al. (58). The following are some potential processes by which OS encourages frailty: OS causes cellular damage, activates apoptosis pathways, increases transcription factor expression and protein degradation, and decreases mitochondrial function, and impairs repair mechanisms (59). Based on the facts mentioned above, we suspect that air pollutants (particularly PM<sub>2.5</sub>) cause the body to experience oxidative stress and inflammatory reactions, both of which result in cellular and molecular damage. The resulting damage exacerbates age-related decline and loss of functional characteristics at the cellular, tissue, and organ levels, which can result in cumulative decreases in a number of physiological systems, such as the immunological, endocrine, and skeletal muscle, and increase the prevalence of frailty.

Our MR study has a number of strengths. First, Mendel’s law of independent assignment chose genetic variation as the exposure factor when we utilized MR to investigate the causal link between air pollution and frailty, increasing the validity of the results. Second, reverse causation cannot exist because the genes appeared before the disease. Third, this study used data from the public GWAS pooled investigations, which has a considerable number of samples size and strengthens the test. In addition, the significance of any potential correlations resulting from population stratification is probably lessened because these people are of European heritage. This study bridges the gap between traditional observational studies and provides



**FIGURE 3** Scatter plots of SNPs associated with air pollution and frailty. Each black point representing each SNP on the exposure (horizontal-axis) and on the outcome (vertical-axis) is plotted with error bars corresponding to each standard error (SE). The Mendelian randomization (MR) regression slopes of the lines represent the causal estimates using five approaches (inverse-variance weighted (IVW), MR-Egger, weighted median, simple mode, and weighted mode). (A) PM<sub>2.5</sub>. (B) PM<sub>2.5–10</sub>. (C) PM<sub>10</sub>. (D) Nitrogen dioxide. (E) Nitrogen oxides.

a fresh theoretical and experimental foundation for mitigating the threats that air pollutants offer to public health.

Inevitably, our research has some restrictions. First, further research on populations in other nations is required to increase the generalizability of the findings as the GWAS dataset used in the MR analyses is from Europe and this link may differ in people of other ancestries. Second, due to a paucity of SNPs associated with the  $5 \times 10^{-8}$  genome-wide significance threshold, our results were determined using a significance level of  $1 \times 10^{-6}$ ; nevertheless, extending the sample size may be necessary to further support our conclusions. Third, because we only employed summary statistics from the MR study, we were only able to make a preliminary determination about the causal link between PM<sub>2.5</sub> and frailty. More research is still required to determine exactly how PM<sub>2.5</sub> raises the risk of frailty.

## 5. Conclusion

Frailty is a dynamic process that worsens or improves over time, and its negative effects can be reversed, controlled, and prevented. Overall, our work offers genetic proof that exposure to high levels of PM<sub>2.5</sub> raises the risk of frailty. This not only provides important evidence for the field of public health, but also emphasizes the potential harm of PM<sub>2.5</sub> to the health of European populations. It would help policy makers and the public to better understand the urgency of air quality improvement. It also provides a basis for the government and environmental organizations to formulate more stringent air quality standards and policies to reduce PM<sub>2.5</sub> pollution. Additionally, this study provides direction for future research to delve deeper into the biological mechanisms, potential confounders, and other environmental factors influencing the risk of frailty between PM<sub>2.5</sub> and frailty. This will help to further understand and elucidate this causal relationship.

## Data availability statement

The datasets presented in this study can be found in online repositories. The names of the repository/repositories and accession number(s) can be found in the article/[Supplementary material](#).

## Ethics statement

All datasets in the present study were downloaded from public databases (<https://gwas.mrcieu.ac.uk/>). These public databases allowed researchers to download and analyze public datasets for scientific purposes; thus, ethics approval was not required. The studies were conducted in accordance with the local legislation and institutional requirements. The participants provided their written informed consent to participate in this study.

## References

- Fried LP, Cohen AA, Xue QL, Walston J, Bandeen-Roche K, Varadhan R. The physical frailty syndrome as a transition from homeostatic symphony to cacophony. *Nat Aging*. (2021) 1:36–46. doi: 10.1038/s43587-020-00017-z
- Dent E, Martin FC, Bergman H, Woo J, Romero-Ortuno R, Walston JD. Management of frailty: opportunities, challenges, and future directions. *Lancet*. (2019) 394:1376–86. doi: 10.1016/S0140-6736(19)31785-4
- Hoogendijk EO, Afilalo J, Ensrud KE, Kowal P, Onder G, Fried LP. Frailty: implications for clinical practice and public health. *Lancet*. (2019) 394:1365–75. doi: 10.1016/S0140-6736(19)31786-6
- Veronese N, Custodero C, Cella A, Demurtas J, Zora S, Maggi S, et al. Prevalence of multidimensional frailty and pre-frailty in older people in different settings: a systematic review and meta-analysis. *Ageing Res Rev*. (2021) 72:101498. doi: 10.1016/j.arr.2021.101498

## Author contributions

HaX: Conceptualization, Data curation, Formal analysis, Investigation, Methodology, Project administration, Software, Visualization, Writing – original draft, Writing – review & editing. SH: Conceptualization, Data curation, Formal analysis, Investigation, Methodology, Project administration, Software, Visualization, Writing – original draft, Writing – review & editing. WY: Data curation, Formal analysis, Investigation, Methodology, Software, Visualization, Writing – original draft, Writing – review & editing. WZ: Writing – original draft, Writing – review & editing. HuX: Writing – original draft, Writing – review & editing. SC: Conceptualization, Supervision, Writing – original draft, Writing – review & editing.

## Funding

The author(s) declare that no financial support was received for the research, authorship, and/or publication of this article.

## Acknowledgments

The authors thank the IEU Open GWAS project (<https://gwas.mrcieu.ac.uk/datasets/>) for providing open summary results data for the analyses.

## Conflict of interest

The authors declare that the research was conducted in the absence of any commercial or financial relationships that could be construed as a potential conflict of interest.

## Publisher's note

All claims expressed in this article are solely those of the authors and do not necessarily represent those of their affiliated organizations, or those of the publisher, the editors and the reviewers. Any product that may be evaluated in this article, or claim that may be made by its manufacturer, is not guaranteed or endorsed by the publisher.

## Supplementary material

The Supplementary material for this article can be found online at: <https://www.frontiersin.org/articles/10.3389/fpubh.2023.1288293/full#supplementary-material>



5. Kojima G. Frailty as a predictor of future falls among community-dwelling older people: a systematic review and Meta-analysis. *J Am Med Dir Assoc.* (2015) 16:1027–33. doi: 10.1016/j.jamda.2015.06.018
6. Aloraibi S, Booth V, Robinson K, Lunt EK, Godfrey D, Caswell A, et al. Optimal management of older people with frailty non-weight bearing after lower limb fracture: a scoping review. *Age Ageing.* (2021) 50:1129–36. doi: 10.1093/ageing/afab071
7. on behalf of the VIP1 study group Flaatten H, de Lange DW, Morandi A, Andersen FH, Artigas A, et al. The impact of frailty on ICU and 30-day mortality and the level of care in very elderly patients ( $\geq 80$  years). *Intensive Care Med.* (2017) 43:1820–8. doi: 10.1007/s00134-017-4940-8
8. Chitalu P, Tsui A, Searle SD, Davis D. Life-space, frailty, and health-related quality of life. *BMC Geriatr.* (2022) 22:646. doi: 10.1186/s12877-022-03355-2
9. di Q, Wang Y, Zanobetti A, Wang Y, Koutrakis P, Choirat C, et al. Air pollution and mortality in the Medicare population. *N Engl J Med.* (2017) 376:2513–22. doi: 10.1056/NEJMoa1702747
10. Jia Y, Lin Z, He Z, Li C, Zhang Y, Wang J, et al. Effect of air pollution on heart failure: systematic review and Meta-analysis. *Environ Health Perspect.* (2023) 131:76001. doi: 10.1289/EHP11506
11. Liu S, Lim YH, Chen J, Strak M, Wolf K, Weinmayr G, et al. Long-term air pollution exposure and pneumonia-related mortality in a large pooled European cohort. *Am J Respir Crit Care Med.* (2022) 205:1429–39. doi: 10.1164/rccm.202106-1484OC
12. Konduracka E, Rostoff P. Links between chronic exposure to outdoor air pollution and cardiovascular diseases: a review. *Environ Chem Lett.* (2022) 20:2971–88. doi: 10.1007/s10311-022-01450-9
13. Avellaneda-Gómez C, Vivanco-Hidalgo RM, Olmos S, Lazcano U, Valentin A, Milá C, et al. Air pollution and surrounding greenness in relation to ischemic stroke: a population-based cohort study. *Environ Int.* (2022) 161:107147. doi: 10.1016/j.envint.2022.107147
14. Duchesne J, Gutierrez LA, Carrière I, Mura T, Chen J, Vienneau D, et al. Exposure to ambient air pollution and cognitive decline: results of the prospective Three-City cohort study. *Environ Int.* (2022) 161:107118. doi: 10.1016/j.envint.2022.107118
15. Huang Y, Zhu M, Ji M, Fan J, Xie J, Wei X, et al. Air pollution, genetic factors, and the risk of lung Cancer: a prospective study in the UK biobank. *Am J Respir Crit Care Med.* (2021) 204:817–25. doi: 10.1164/rccm.202011-4063OC
16. Chin WS, Pan SC, Huang CC, Chen PJ, Guo YL. Exposure to air pollution and survival in follow-up after hepatocellular carcinoma. *Liver Cancer.* (2022) 11:474–82. doi: 10.1159/000525346
17. Liu F, Wang Z, Wei Y, Liu R, Jiang C, Gong C, et al. The leading role of adsorbed lead in PM(2.5)-induced hippocampal neuronal apoptosis and synaptic damage. *J Hazard Mater.* (2021) 416:125867. doi: 10.1016/j.jhazmat.2021.125867
18. Veronese N, Maniscalco L, Matranga D, Lacca G, Dominguez LJ, Barbagallo M. Association between pollution and frailty in older people: a cross-sectional analysis of the UK biobank. *J Am Med Dir Assoc.* (2023) 24:475–81.e3. doi: 10.1016/j.jamda.2022.12.027
19. Shin J, Choi J. Frailty related to the exposure to particulate matter and ozone: the Korean frailty and aging cohort study. *Int J Environ Res Public Health.* (2021) 18:11796. doi: 10.3390/ijerph182211796
20. Guo Z, Xue H, Fan L, Wu D, Wang Y, Chung Y, et al. Differential effects of size-specific particulate matter on frailty transitions among middle-aged and older adults in China: findings from the China health and retirement longitudinal study (CHARLS), 2015–2018. *Int Health.* (2023) 10:ihad033. doi: 10.1093/inthealth/ihad033
21. Davey Smith G, Hemani G. Mendelian randomization: genetic anchors for causal inference in epidemiological studies. *Hum Mol Genet.* (2014) 23:R89–98. doi: 10.1093/hmg/ddu328
22. Bycroft C, Freeman C, Petkova D, Band G, Elliott LT, Sharp K, et al. The UK biobank resource with deep phenotyping and genomic data. *Nature.* (2018) 562:203–9. doi: 10.1038/s41586-018-0579-z
23. Atkins JL, Jylhävä J, Pedersen NL, Magnusson PK, Lu Y, Wang Y, et al. A genome-wide association study of the frailty index highlights brain pathways in ageing. *Ageing Cell.* (2021) 20:e13459. doi: 10.1111/acel.13459
24. Burgess S, Davey Smith G, Davies NM, Dudbridge F, Gill D, Glymour MM, et al. Guidelines for performing Mendelian randomization investigations: update for summer 2023. *Wellcome Open Res.* (2019) 4:186. doi: 10.12688/wellcomeopenres.15555.1
25. Burgess S, Butterworth A, Thompson SG. Mendelian randomization analysis with multiple genetic variants using summarized data. *Genet Epidemiol.* (2013) 37:658–65. doi: 10.1002/gepi.21758
26. Hemani G, Zheng J, Elsworth B, Wade KH, Haberland V, Baird D, et al. The MR-base platform supports systematic causal inference across the human phenome. *elife.* (2018) 7:7. doi: 10.7554/eLife.34408
27. Wootton RE, Lawn RB, Millard LAC, Davies NM, Taylor AE, Munafò MR, et al. Evaluation of the causal effects between subjective wellbeing and cardiometabolic health: mendelian randomisation study. *BMJ.* (2018) 362:k3788. doi: 10.1136/bmj.k3788
28. Zhou J, Ye Z, Wei P, Yi F, Ouyang M, Xiong S, et al. Effect of basal metabolic rate on osteoporosis: a Mendelian randomization study. *Front Public Health.* (2023) 11:1096519. doi: 10.3389/fpubh.2023.1096519
29. Bowden J, Del Greco MF, Minelli C, Davey Smith G, Sheehan NA, Thompson JR. Assessing the suitability of summary data for two-sample Mendelian randomization analyses using MR-egger regression: the role of the I<sup>2</sup> statistic. *Int J Epidemiol.* (2016) 45:1961–74. doi: 10.1093/ije/dyw220
30. Burgess S, Thompson SG. Avoiding bias from weak instruments in Mendelian randomization studies. *Int J Epidemiol.* (2011) 40:755–64. doi: 10.1093/ije/dyr036
31. Bowden J, Del Greco MF, Minelli C, Davey Smith G, Sheehan N, Thompson J. A framework for the investigation of pleiotropy in two-sample summary data Mendelian randomization. *Stat Med.* (2017) 36:1783–802. doi: 10.1002/sim.7221
32. Burgess S, Thompson SG. Interpreting findings from Mendelian randomization using the MR-egger method. *Eur J Epidemiol.* (2017) 32:377–89. doi: 10.1007/s10654-017-0255-x
33. Bowden J, del Greco M F, Minelli C, Zhao Q, Lawlor DA, Sheehan NA, et al. Improving the accuracy of two-sample summary-data Mendelian randomization: moving beyond the NOME assumption. *Int J Epidemiol.* (2019) 48:728–42. doi: 10.1093/ije/dyy258
34. Verbanck M, Chen CY, Neale B, Do R. Detection of widespread horizontal pleiotropy in causal relationships inferred from Mendelian randomization between complex traits and diseases. *Nat Genet.* (2018) 50:693–8. doi: 10.1038/s41588-018-0099-7
35. Nolte IM. Metasubtract: an R-package to analytically produce leave-one-out meta-analysis GWAS summary statistics. *Bioinformatics.* (2020) 36:4521–2. doi: 10.1093/bioinformatics/btaa570
36. Eckel SP, Louis TA, Chaves PH, Fried LP, Margolis AH. Modification of the association between ambient air pollution and lung function by frailty status among older adults in the cardiovascular health study. *Am J Epidemiol.* (2012) 176:214–23. doi: 10.1093/aje/kws001
37. Lee WJ, Liu CY, Peng LN, Lin CH, Lin HP, Chen LK. PM(2.5) air pollution contributes to the burden of frailty. *Sci Rep.* (2020) 10:14478. doi: 10.1038/s41598-020-71408-w
38. Guo YF, Ng N, Kowal P, Lin H, Ruan Y, Shi Y, et al. Frailty risk in older adults associated with long-term exposure to ambient PM<sub>2.5</sub> in 6 middle-income countries. *J Gerontol A Biol Sci Med Sci.* (2022) 77:970–6. doi: 10.1093/gerona/glac022
39. Lv Y, Yang Z, Ye L, Jiang M, Zhou J, Guo Y, et al. Long-term fine particulate exposure and incidence of frailty in older adults: findings from the Chinese longitudinal healthy longevity survey. *Age Ageing.* (2023) 52:afad009. doi: 10.1093/ageing/afad009
40. Tazzeo C, Rizzuto D, Calderón-Larrañaga A, Roso-Llorach A, Marengoni A, Welmer AK, et al. Multimorbidity patterns and risk of frailty in older community-dwelling adults: a population-based cohort study. *Age Ageing.* (2021) 50:2183–91. doi: 10.1093/ageing/afab138
41. Hu J, Zhou R, Ding R, Ye DW, Su Y. Effect of PM(2.5) air pollution on the global burden of lower respiratory infections, 1990–2019: a systematic analysis from the global burden of disease study 2019. *J Hazard Mater.* (2023) 459:132215. doi: 10.1016/j.jhazmat.2023.132215
42. Guo C, Lv S, Liu Y, Li Y. Biomarkers for the adverse effects on respiratory system health associated with atmospheric particulate matter exposure. *J Hazard Mater.* (2022) 421:126760. doi: 10.1016/j.jhazmat.2021.126760
43. Alexeeff SE, Deosarasingh K, Van Den Eeden S, Schwartz J, Liao NS, Sidney S. Association of Long-term Exposure to particulate air pollution with cardiovascular events in California. *JAMA Netw Open.* (2023) 6:e230561. doi: 10.1001/jamanetworkopen.2023.0561
44. Sun D, Liu C, Ding Y, Yu C, Guo Y, Sun D, et al. Long-term exposure to ambient PM(2.5), active commuting, and farming activity and cardiovascular disease risk in adults in China: a prospective cohort study. *Lancet Planetary Health.* (2023) 7:e304–12. doi: 10.1016/S2542-5196(23)00047-5
45. Olaniyan T, Pinault L, Li C, van Donkelaar A, Meng J, Martin RV, et al. Ambient air pollution and the risk of acute myocardial infarction and stroke: a national cohort study. *Environ Res.* (2022) 204:111975. doi: 10.1016/j.envres.2021.111975
46. Crea F. The atlas of cardiovascular disease in Europe and a focus on frailty and cardiovascular risk. *Eur Heart J.* (2022) 43:703–5. doi: 10.1093/eurheartj/ehac066
47. Gawda A, Majka G, Nowak B, Marcinkiewicz J. Air pollution, oxidative stress, and exacerbation of autoimmune diseases. *Central Eur J Immunol.* (2017) 42:305–12. doi: 10.5114/cej.2017.70975
48. Chen H, Oliver BG, Pant A, Olivera A, Poronnik P, Pollock CA, et al. Effects of air pollution on human health—mechanistic evidence suggested by in vitro and in vivo modelling. *Environ Res.* (2022) 212:113378. doi: 10.1016/j.envres.2022.113378
49. Xu MX, Ge CX, Qin YT, Gu TT, Lou DS, Li Q, et al. Prolonged PM<sub>2.5</sub> exposure elevates risk of oxidative stress-driven nonalcoholic fatty liver disease by triggering increase of dyslipidemia. *Free Radic Biol Med.* (2019) 130:542–56. doi: 10.1016/j.freeradbiomed.2018.11.016
50. Gogna P, King WD, Villeneuve PJ, Kumarathasan P, Johnson M, Lanphear B, et al. Ambient air pollution and inflammatory effects in a Canadian pregnancy cohort. *Environ Epidemiol.* (2021) 5:e168. doi: 10.1097/EE9.0000000000000168
51. Wang Y, Xiong L, Tang M. Toxicity of inhaled particulate matter on the central nervous system: neuroinflammation, neuropsychological effects and neurodegenerative disease. *J Appl Toxicol.* (2017) 37:644–67. doi: 10.1002/jat.3451

52. Reyes-caballero H, Rao X, Sun Q, Warmoes MO, Lin P, Sussan TE, et al. Author correction: air pollution-derived particulate matter dysregulates hepatic Krebs cycle, glucose and lipid metabolism in mice. *Sci Rep.* (2020) 10:5082. doi: 10.1038/s41598-020-60083-6
53. Gangwar RS, Bevan GH, Palanivel R, Das L, Rajagopalan S. Oxidative stress pathways of air pollution mediated toxicity: recent insights. *Redox Biol.* (2020) 34:101545. doi: 10.1016/j.redox.2020.101545
54. Tran Van Hoi E, De Glas NA, Portielje JEA, Van Heemst D, Van Den Bos F, Jochems SP, et al. Biomarkers of the ageing immune system and their association with frailty—a systematic review. *Exp Gerontol.* (2023) 176:112163. doi: 10.1016/j.exger.2023.112163
55. Walker KA, Walston J, Gottesman RF, Kucharska-Newton A, Palta P, Windham BG. Midlife systemic inflammation is associated with frailty in later life: the ARIC study. *J Gerontol A Biol Sci Med Sci.* (2019) 74:343–9. doi: 10.1093/gerona/gly045
56. Samson LD, Buisman AM, Ferreira JA, Picavet HSJ, Verschuren WMM, Boots AM, et al. Inflammatory marker trajectories associated with frailty and ageing in a 20-year longitudinal study. *Clin Transl Immunol.* (2022) 11:e1374. doi: 10.1002/cti2.1374
57. Xu Y, Wang M, Chen D, Jiang X, Xiong Z. Inflammatory biomarkers in older adults with frailty: a systematic review and meta-analysis of cross-sectional studies. *Aging Clin Exp Res.* (2022) 34:971–87. doi: 10.1007/s40520-021-02022-7
58. Soysal P, Isik AT, Carvalho AF, Fernandes BS, Solmi M, Schofield P, et al. Oxidative stress and frailty: a systematic review and synthesis of the best evidence. *Maturitas.* (2017) 99:66–72. doi: 10.1016/j.maturitas.2017.01.006
59. Pinto M, Moraes CT. Mechanisms linking mtDNA damage and aging. *Free Radic Biol Med.* (2015) 85:250–8. doi: 10.1016/j.freeradbiomed.2015.05.005