



OPEN ACCESS

EDITED BY

Qun Xu,
Chinese Academy of Medical Sciences and
Peking Union Medical College, China

REVIEWED BY

Zhihong Wang,
Chinese Center for Disease Control and
Prevention, China

Bingqing Zhao,
Stanford University, United States
Jia Xin Zhao,
Chinese Academy of Medical Sciences and
Peking Union Medical College, China

*CORRESPONDENCE

Chung-Hsin Chen
✉ mufasachen@gmail.com;
✉ chunghsinchen2@ntu.edu.tw

SPECIALTY SECTION

This article was submitted to
Environmental Health and Exposome,
a section of the journal
Frontiers in Public Health

RECEIVED 18 October 2022

ACCEPTED 13 February 2023

PUBLISHED 09 March 2023

CITATION

Jhuang J-R, Chiu P-C, Hsieh T-C, Chen C-H,
Pu Y-S and Lee W-C (2023) Latency period of
aristolochic acid-induced upper urinary tract
urothelial carcinoma.
Front. Public Health 11:1072864.
doi: 10.3389/fpubh.2023.1072864

COPYRIGHT

© 2023 Jhuang, Chiu, Hsieh, Chen, Pu and Lee.
This is an open-access article distributed under
the terms of the [Creative Commons Attribution
License \(CC BY\)](https://creativecommons.org/licenses/by/4.0/). The use, distribution or
reproduction in other forums is permitted,
provided the original author(s) and the
copyright owner(s) are credited and that the
original publication in this journal is cited, in
accordance with accepted academic practice.
No use, distribution or reproduction is
permitted which does not comply with these
terms.

Latency period of aristolochic acid-induced upper urinary tract urothelial carcinoma

Jing-Rong Jhuang^{1,2}, Po-Chun Chiu³, Tung-Che Hsieh¹,
Chung-Hsin Chen^{4*}, Yeong-Shiau Pu⁴ and Wen-Chung Lee^{1,2,3}

¹Institute of Epidemiology and Preventive Medicine, College of Public Health, National Taiwan University, Taipei, Taiwan, ²Taiwan Cancer Registry, Taipei, Taiwan, ³Department of Public Health, College of Public Health, National Taiwan University, Taipei, Taiwan, ⁴Department of Urology, National Taiwan University Hospital, Taipei, Taiwan

Purpose: Aristolochic acid (AA) is a carcinogen in upper urinary tract urothelial carcinoma (UTUC). This study investigated the latency period between AA exposure and UTUC development.

Materials and methods: This population-based cohort study was designed using record linkage of the National Health Insurance Research Database (NHIRD), Taiwan Cancer Registry Dataset, and cause-of-death data in Taiwan. Those aged 40–79 years were enrolled in this study. Patients who died or had renal insufficiency or UTUC before 2005 were excluded. The doses of AA exposure and rates of comorbidities between 2000 and 2005 were obtained. The Cox proportion hazard model was used to estimate the risk of UTUC between 2005 and 2016. In addition, the Cox model with time-varying coefficient of AA was used to measure the latency period of UTUC.

Results: Of the 752,232 participants enrolled from the NHIRD, 520,871 (68.29%), 210,447 (27.59%), and 31,415 (4.12%) were exposed to cumulative AA doses of 0–1 mg, 1–150 mg, and >150 mg, respectively. A total of 1,147 (0.15%) patients were diagnosed with UTUC between 2005 and 2016. The latency periods of UTUC in middle-aged (40–59 years old) men with cumulative AA doses of 1–150 mg and middle-aged women with cumulative AA doses of 1–150 mg and >150 mg were 8, 9, and 7 years, respectively. Among the aged (60–79 years) individuals, no time-varying effect was observed, and the latency period could not be measured.

Conclusion: A decreased risk of UTUC was observed after the ban on AA in Taiwan, especially in middle-aged women with moderate to high doses of AA exposure and men with moderate doses of AA exposure. The latency period of UTUC varies with age, the dose of AA exposure, and sex.

KEYWORDS

aristolochic acid, upper urinary tract urothelial carcinoma (UTUC), latency period, time-varying effect, slope-change model

1. Introduction

Aristolochic acid (AA) was identified as a nephrotoxin based on the unusual finding that a cluster of young Belgian women presented with rapidly progressive renal failure after consuming a slimming herbal remedy containing AA (1, 2). Furthermore, Nortier et al. (3) reported that 95% of these women were observed to have either urothelial carcinoma (UC) or urothelial dysplasia in their native kidneys. Therefore, AA was not a nephrotoxin but also a carcinogen in this Belgium cohort. In some villages in Balkan, the population

has consumed bread made from flour contaminated with seeds of *Aristolochia clematitis* for decades (4). Based on clinical and molecular evidence, AA was also demonstrated to be responsible for endemic nephropathy and upper urinary tract urothelial carcinoma (UTUC) in Balkan patients. In addition, nationwide exposure to AA from Chinese herbal remedies was observed in Taiwan. Between 1997 and 2003, at least 39% of Taiwanese people ingested AA-containing herbal products (AA-CHP) (5). AA-induced UTUC was confirmed in a considerable portion of UTUC patients according to the identification of both aristolactam-DNA adducts in the renal cortex and the signature mutation pattern in UTUC tumors in Taiwan (6). Using the nationwide health insurance database, those who took more AA-CHP were at higher risk of both UC (7) and end-stage renal disease (8).

Since the association between AA, renal failure, and UTUC has been confirmed, several countries have banned the prescription of AA-CHP, including Guangfangji (*Radix Aristolochiae Fangchi*), Guanmutong (*Caulis aristolochiae Manshuriensis*), Madouling (*Fructus Aristolochia*), Qingmuxiang (*Radix Aristolochiae*), Tianxianteng (*Herba Aristolochia*), and Zhushalian (*Radix Aristolochiae Tuberosa*) (9–11). This action limited the exposure of AA from major sources and might reduce the development of either renal insufficiency or UTUC in the population. Although the health authority in Taiwan banned the use of the abovementioned major types of AA-CHP in 2003, the incidence of UTUC continued to increase until 2010 (12). It reflects the carcinogenic effects of AA may persist long after the discontinuation of AA usage. However, there are no studies that represent the latency period of AA in the development of UTUC.

Wang et al. identified that the prescription frequency of AA-CHP in Taiwan for patients with end-stage renal disease decreased to nearly zero after 2005 (13). The combination of nationwide exposure to AA and the clear stop date of AA use makes Taiwan an ideal model to investigate the latency period. Therefore, this study was designed to explore the latency period in populations exposed to varied doses of AA using a nationwide registry database.

2. Materials and methods

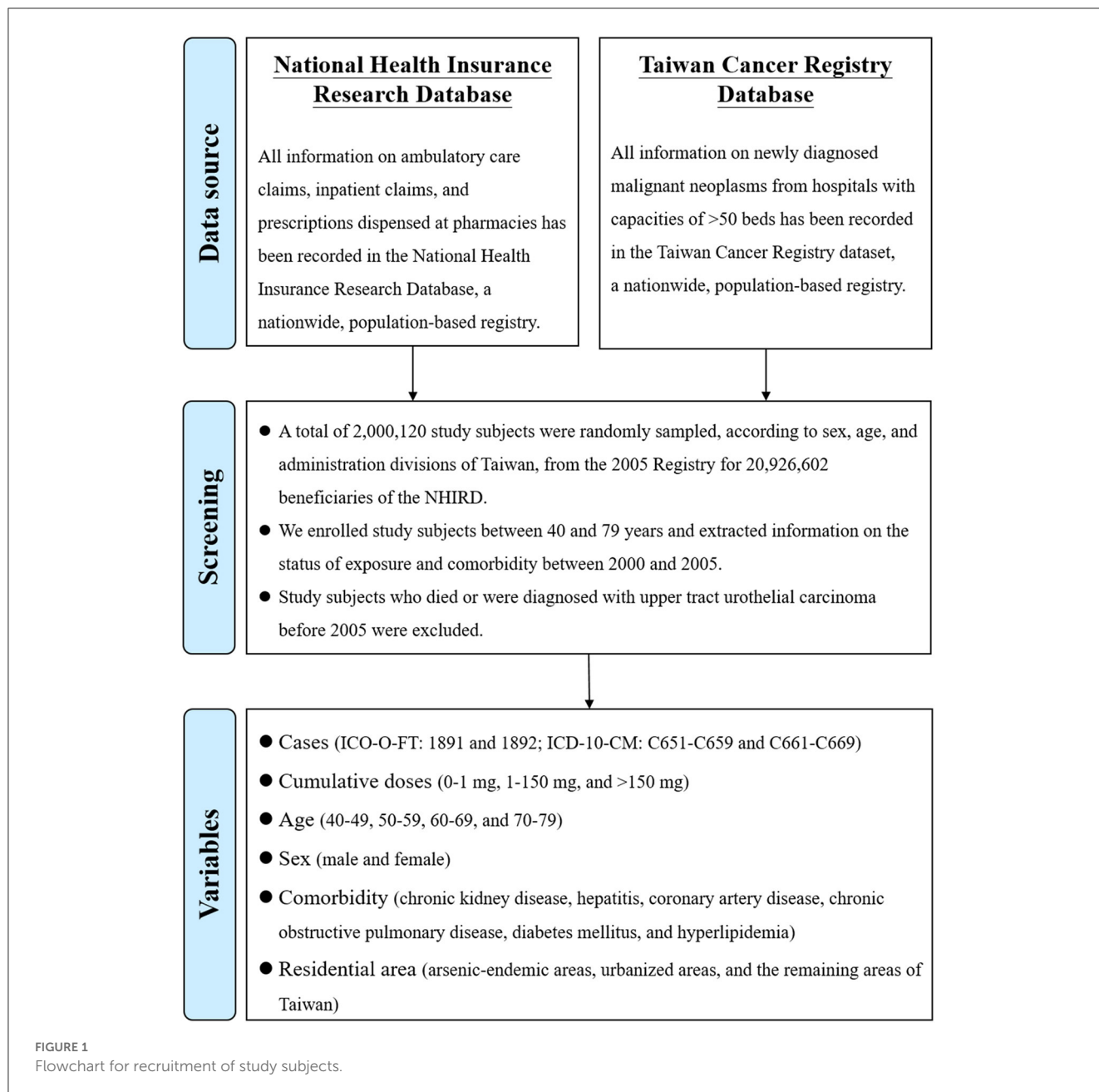
This study was reviewed and approved by the Research Ethics Committee at National Taiwan University Hospital (201912201W). A population-based retrospective cohort study was designed using record linkage of the National Health Insurance Research Database (NHIRD) (14), the Taiwan Cancer Registry Dataset (TCRD) (15, 16), and cause-of-death data. The datasets used were retrieved from the Health and Welfare Data Science Center of the Ministry of Health and Welfare in Taiwan. A flowchart for the recruitment of study participants is shown in Figure 1. The study period was from January 2000 to December 2016. We conducted stratified random sampling according to sex, age, and administration divisions. Sex was divided into men and women. Age was divided into 20 groups at 5-year intervals from age 5 to 85. The region is classified into 6 categories based on the separate Divisions of the National Health Insurance Administration. A total of 240 subgroups ($2 \times 20 \times 6$) were created, and then the number of samples was drawn from each subgroup based on random sampling. A total of 2,000,120

participants were sampled from the 2005 registry for 20,926,602 beneficiaries of the NHIRD in Taiwan. In addition, we collected data including the status of AA exposure and comorbidities between 2000 and 2005, and enrolled study subjects aged between 40 and 79 years in 2005 (when the follow-up started). Subjects aged 80 years or older were not enrolled because of the conflict of competing risks of death. Participants who died or had been diagnosed with UTUC before 2005 were excluded from the study because of the unclear time-sequence between AA and UTUC.

Since 2003, the Ministry of Health and Welfare in Taiwan has banned the following herbs containing AA: (7, 12) Madouling (*Fructus Aristolochiae*), Tianxianteng (*Caulis Aristolochiae*), Guanmutong (*Aristolochia Manshuriensis*), Guangfangji (*Aristolochia Fangchi*), and Qingmuxiang (*Radix Aristolochiae*). A total of 923 Chinese herbal remedies containing these herbs were evaluated in this study. The study participants who used these AA-CHPs were identified from the NHIRD. The original amount of herbs and the total dose of AA for each AA-CHPs were determined using the detailed composition of AA-CHPs obtained from the Department of Chinese Medicine and Pharmacy, Ministry of Health and Welfare in Taiwan. The estimated average doses of AA per 1 g of Guanmutong, Guangfangji, Madouling, Qingmuxiang, and Tianxianteng are 2.59, 2.04, 0.63, 0.009, and 0.026, respectively (17–19). We calculated the estimated cumulative dose of AA exposure (CDAE) from 2000 to 2005 for each subject and categorized them into a reference group (0–1 mg) and two exposure groups (1–150 mg and >150 mg) for the comparability among the published studies (7).

Potential confounding factors, including demographic characteristics, living in arsenic-endemic areas or urbanized areas, and comorbidities, were considered and adjusted in the study. Study subjects were categorized into four age groups (40–49, 50–59, 60–69, and 70–79 in 2005 when the follow-up started). Arsenics was confirmed to be a carcinogen for urothelial carcinoma (20) and presented as a confounding factor in the identification of UTUC in Taiwan. A total of 21 townships in Taiwan (Supplementary Figure 1) where the concentration of arsenics in well water exceeded 0.35 ppm were defined as arsenic-endemic areas (21, 22). A total of 27 townships in Taiwan with a population size exceeding 20,000 and population density exceeding 300 per km² were defined as urbanized areas (Supplementary Figure 1). Comorbidities were collected from the NHIRD and defined by the following diagnoses: renal insufficiency (ICD-9-CM code: 585), hepatitis (ICD-9-CM code: 070), coronary artery disease (ICD-9-CM code: 414), chronic obstructive pulmonary disease (ICD-9-CM codes: 490–496), diabetes mellitus (ICD-9-CM codes: 249–250), and hyperlipidemia (ICD-9-CM code: 272). The UTUC cases (ICO-O-FT: 189.1 and 189.2; ICD-10-CM: C65.1–C65.9 and C66.1–C66.9) from 2005 to 2016 were collected from the TCRD.

Characteristics of study participants were presented as categorical variables and compared using the chi-square test and Cochran–Armitage test for trend. Multivariable analyses of UTUC risk between 2005 and 2016 were conducted using the Cox proportional hazards model. Because the hazard of UTUC might change after the discontinuation of AA, Cox models with a time-varying coefficient (23) of CDAE were constructed to measure



the latency period. Specifically, we assumed a piecewise constant hazard function for the hazard ratios of CDAE, segmenting the calendar year into four consecutive periods (2005–2007, 2008–2010, 2011–2013, and 2014–2016) to depict the temporal change in adjusted hazard ratios (aHR). Besides, assuming that prohibiting the use of AA-CHPs would affect the trend in the UTUC occurrence after h years, we considered the slope-change model as follows:

$$\lambda(t|X, Z; \beta_0, \beta_1, \gamma) = \lambda_0(t) \times \exp\left(f(\beta_0, \beta_1, t)^T X + \gamma^T Z\right) \text{ and}$$

$$f(\beta_0, \beta_1, t) = \beta_0 + \beta_1 \times (t - h + 1) \times I(t \geq h - 1),$$

where X is a vector of exposure groups, Z is a vector of confounding factors, and $I(\cdot)$ is an indicator function. The model

parameters include $\lambda_0(t)$ is the baseline hazard function, β_0 is the baseline effect of exposure, β_1 is the slope-change effect of exposure after h years, and γ is the effect of confounding factors. We regarded the “ h ” as the latency period. Subsequently, we performed model selection using the lowest Akaike information criterion (AIC) to determine the latency period. The latency period was defined as the duration between the exposure to AA and the identification of UTUC. The candidates included 11 slope-change models ($h = 1, 2, \dots, 11$) and a proportional hazard model. Statistical interactions were examined using the likelihood ratio test. Statistical significance was set at p -value < 0.05. All analyses were performed using SAS version 9.4 and R version 3.5.2.

TABLE 1 Characteristics of study participants from the National Health Insurance Research Database registry between 2000 and 2005.

	Estimated cumulative doses of aristolochic acid from 2000 to 2005			
	0–1 mg	1–150 mg	>150 mg	P-value
	N = 520,871	N = 210,447	N = 31,415	
Sex, No. (%)				<0.001
Men	280,663 (73.48)	88,363 (23.14)	12,916 (3.38)	
Women	240,208 (63.08)	122,084 (32.06)	18,499 (4.86)	
Age, No. (%)				<0.001
40–49 years	219,718 (67.59)	91,263 (28.07)	14,113 (4.34)	
50–59 years	146,099 (67.67)	60,845 (28.18)	8,957 (4.15)	
60–69 years	89,431 (68.66)	35,664 (27.38)	5,165 (3.97)	
70–79 years	65,623 (71.74)	22,675 (24.79)	3,180 (3.48)	
Urbanized area, No. (%)				<0.001
No	468,301 (67.80)	193,489 (28.01)	28,969 (4.19)	
Yes	52,570 (73.04)	16,958 (23.56)	2,446 (3.40)	
Arsenic-endemic area, No. (%)				<0.001
No	511,537 (68.20)	207,501 (27.67)	31,001 (4.13)	
Yes	9,334 (73.53)	2,946 (23.21)	414 (3.26)	
Comorbidity, No. (%)				<0.001
No	499,312 (70.26)	187,040 (26.32)	24,332 (3.42)	
Chronic kidney disease	8,613 (69.26)	3,184 (25.61)	638 (5.13)	
Hepatitis	480 (24.01)	1,004 (50.23)	515 (25.76)	
Coronary artery disease	181 (31.87)	287 (50.53)	100 (17.61)	
Chronic obstructive pulmonary disease	8,259 (31.81)	13,555 (52.21)	4,149 (15.98)	
Hyperlipidemia	1,580 (32.57)	2,397 (49.41)	874 (18.02)	
Diabetes mellitus	2,446 (39.24)	2,980 (47.81)	807 (12.95)	

3. Results

3.1. Patient population

A total of 752,232 participants aged 40–79 years were enrolled in this study from the NHIRD. The demographics of the study participants stratified by the CDAE between 2000 and 2005 are shown in Table 1. In this cohort, 520,871 (68.29%), 210,447 (27.59%), and 31,415 (4.12%) were exposed to CDAE of 0–1 mg, 1–150 mg, and >150 mg, respectively. More women (36.92%) had a CDAE of >1 mg than men (26.52%, $p < 0.001$). With increasing age, the proportion of participants with CDAE >1 mg reduced gradually (40–49 years: 32.41%; 50–59 years: 32.33%; 60–69 years: 31.35%; 70–79 years: 28.27%; p for trend < 0.01). Fewer study subjects had CDAE of >1 mg in the urbanized areas (26.96%) than in the non-urbanized areas (32.20%, $p < 0.001$). Fewer study participants had a CDAE of >1 mg in arsenic-endemic areas (26.47%) than in non-arsenic-endemic areas (31.80%; $p < 0.001$). Subjects with comorbidities had a significantly higher CDAE than those without comorbidities ($p < 0.001$). Among people with comorbidities, 58.58 and 13.61% took CDAE of >1 and >150 mg, respectively, during the study period.

3.2. Univariable and multivariable analysis of UTUC risk

Between 2005 and 2016, 1,147 UTUC patients (0.15%) were diagnosed in this study cohort. Multivariable analysis was conducted based on the Cox proportional hazards model and presented in Table 2. The aHRs for all exposure groups (CDAE: 1–150 mg: aHR = 1.50, 95% CI 1.32–1.70; >150 mg: aHR = 2.21, 95% CI 1.77–2.77) were significantly higher than that in the reference group (0–1 mg). In addition, an apparent dose-response relationship (p for trend < 0.01) was observed between the dose of exposure and the risk of UTUC. There was no significant difference in the UTUC risk between men and women (women: aHR = 1.09, 95% CI 0.97–1.22) and between living in the urbanized areas and non-urbanized areas (urbanized areas: aHR = 1.06, 95% CI 0.87–1.28). Older participants had a higher risk of UTUC than younger participants (reference: 40–49 years; 50–59 years: aHR = 3.07, 95% CI 2.49–3.77; 60–69 years: aHR = 7.91, 95% CI 6.49–9.62; 70–79 years: aHR = 10.24, 95% CI 8.34–12.57). The participants living in arsenic-endemic areas were at a higher risk (aHR = 1.53, 95% CI 1.07–2.17) of UTUC

TABLE 2 Adjusted hazard ratios for the occurrence of upper tract urothelial carcinoma between 2005 and 2016, assuming proportional hazard and time varying effect of cumulative doses of aristolochic acid.

Model type	No. of subjects	UTUC cases	Proportional hazard model		Slope-change model	
			Adjusted HR	95% CI	Adjusted HR	95% CI
Cumulative doses of aristolochic acid						
Baseline						
0–1 mg	520,871	660	1.00	–	1.00	–
1–150 mg	210,447	398	1.50	(1.32–1.70)	1.48	(1.26–1.73)
>150 mg	31,415	89	2.21	(1.77–2.77)	2.52	(1.92–3.31)
Slope change in 2012						
0–1 mg	–	–	–	–	1.00	–
1–150 mg	–	–	–	–	1.00	(0.94–1.09)
>150 mg	–	–	–	–	0.89	(0.77–0.99)
Sex						
Men	381,942	514	1.00	–	1.00	–
Women	380,791	633	1.09	(0.97–1.22)	1.09	(0.97–1.23)
Age						
40–49 years	325,094	132	1.00	–	1.00	–
50–59 years	215,901	276	3.07	(2.49–3.77)	3.06	(2.49–3.77)
60–69 years	130,260	424	7.91	(6.49–9.62)	7.83	(6.34–9.53)
70–79 years	91,478	315	10.24	(8.34–12.57)	9.96	(8.12–12.22)
Urbanized area						
No	690,759	1,033	1.00	–	1.00	–
Yes	71,974	114	1.06	(0.87–1.28)	1.06	(0.87–1.29)
Arsenic-endemic area						
No	750,039	1,115	1.00	–	1.00	–
Yes	12,694	32	1.53	(1.07–2.17)	1.52	(1.07–2.17)
Comorbidity						
No	710,684	896	1.00	–	1.00	–
Chronic kidney disease	12,435	174	10.18	(8.63–12.00)	9.85	(8.36–11.61)
Other comorbidities	39,614	77	1.09	(0.86–1.37)	1.09	(0.86–1.39)

compared to those in non-arsenic-endemic areas. The participants with chronic kidney disease were at higher risk (aHR = 10.18, 95% CI 8.63–12.00) of UTUC compared to those without chronic kidney disease. There was no difference in UTUC risk between the participants with (aHR = 1.09, 95% CI 0.86–1.37) and without other comorbidities.

3.3. Latency period in the whole population

To evaluate the latency period between AA exposure and the identification of UTUC, the slope-change model and the

piecewise constant hazard model were constructed and presented in Tables 2, 3, respectively. Among subjects who took CDAE of 1–150 mg, no significant trend was observed in aHRs between 2005 and 2016 (Figure 2A). In contrast, among subjects with CDAE of >150 mg, the aHR increased from 1.96 (95% CI 1.22–3.16) in 2005–2007 to 3.02 (95% CI 2.01–4.53) in 2008–2010, and then gradually decreased to 1.76 (95% CI 1.09–2.83) in 2014–2016. The slope-change model showed that the aHR kept at 2.52 (95% CI 1.92–3.31) and decreased in 2011 (the 7th year after the ban on AA-CHPs; Figure 2B). The aHR will reach 1.00 in 2018–2019 based on the speed of 11% (95% CI 1–23%) per year.

TABLE 3 Adjusted hazard ratios for the occurrence of upper tract urothelial carcinoma between 2005 and 2016, based on the piecewise constant hazard model.

	1–150 mg of aristolochic acid		>150 mg of aristolochic acid	
	Adjusted HR	95% CI	Adjusted HR	95% CI
The whole population				
2005–2007	1.43	(1.10–1.85)	1.96	(1.22–3.16)
2008–2010	1.45	(1.11–1.89)	3.02	(2.01–4.53)
2011–2013	1.70	(1.35–2.16)	2.20	(1.42–3.41)
2014–2016	1.41	(1.11–1.80)	1.76	(1.09–2.83)
Men aged 40–59 years				
2005–2007	0.91	(0.41–2.01)	1.51	(0.36–6.39)
2008–2010	2.59	(1.55–4.33)	2.57	(0.90–7.31)
2011–2013	1.48	(0.81–2.69)	1.25	(0.30–5.25)
2014–2016	1.06	(0.58–1.95)	1.30	(0.48–2.49)
Women aged 40–59 years				
2005–2007	3.30	(1.31–8.34)	4.66	(1.61–13.46)
2008–2010	1.54	(0.63–3.79)	3.73	(1.65–8.41)
2011–2013	1.90	(1.00–3.60)	1.84	(0.71–4.78)
2014–2016	0.77	(0.36–1.68)	2.09	(0.92–4.73)
Men aged 60–79 years				
2005–2007	1.34	(0.82–2.21)	1.51	(0.55–4.19)
2008–2010	1.13	(0.66–1.93)	2.71	(1.23–5.99)
2011–2013	1.98	(1.26–3.12)	3.24	(1.53–6.88)
2014–2016	1.69	(0.99–2.91)	1.58	(0.49–5.12)
Women aged 60–79 years				
2005–2007	1.38	(0.94–2.02)	1.84	(0.88–3.84)
2008–2010	1.19	(0.73–1.94)	3.12	(1.52–6.39)
2011–2013	1.70	(1.16–2.48)	2.11	(1.00–4.42)
2014–2016	1.46	(0.99–2.15)	2.25	(1.11–4.53)

3.4. Latency period in the middle-aged population

The latency period varied with sex, age, and CDAE (p for interaction = 0.04). Among middle-aged men (40–59 years) who took CDAE of 1–150 mg, the aHR increased from 0.91 (95% CI 0.41–2.01) in 2005–2007 to 2.59 (95% CI 1.55–4.33) in 2008–2010, and then gradually decreased to 1.06 (95% CI 0.58–1.95) in 2014–2016. The slope-change model showed that the aHR kept at 1.77 (95% CI 1.08–11.25), started to decrease in 2012 (the 8th year after the ban on AA-CHPs), and reached 1.00 in 2014–2015 based on the speed of 19% (95% CI –2–36%) per year (Figure 3A). In contrast, middle-aged men with a CDAE of more than 150 mg, the aHR increased from 1.51 (95% CI 0.36–6.39) in 2005–2007 to 2.57 (95% CI 0.90–7.31) in 2008–2010 and then declined to 1.30 (95% CI 0.48–2.49) in 2014–2016. The slope-change model showed that the aHR kept at 2.10 (95% CI 0.97–3.24) and decreased in

2009 (the 5th year after the ban on AA-CHPs; Figure 3B). The aHR decreased by 6% (95% CI –7–14%) per year and will reach 1.00 in 2020–2021.

In middle-aged women (40–59 years) with a CDAE of 1–150 mg, the aHRs substantially decreased from 3.30 (95% CI 1.31–8.34) in 2005–2007 to 0.77 (95% CI 0.36–1.68) in 2014–2016. The slope-change model showed that the aHR kept at 2.15 (95% CI 1.32–3.50), started to decrease in 2013 (the 9th year after the ban on AA-CHPs), and reached 1.00 in 2015–2016 based on the speed of 28% (95% CI –2–48%) per year (Figure 3C). Among middle-aged women having CDAE of more than 150 mg, the aHRs significantly decreased from 4.66 (95% CI 1.61–13.46) in 2005–2007 to 2.09 (95% CI 0.92–4.73) in 2014–2016. The slope-change model revealed that the aHR kept at 3.92 (95% CI 1.55–9.87), started to decrease in 2011 (the 7th year after the ban on AA-CHPs), and reached 1.00 in 2016 based on the speed of 22% (95% CI 1–38%) per year (Figure 3D).

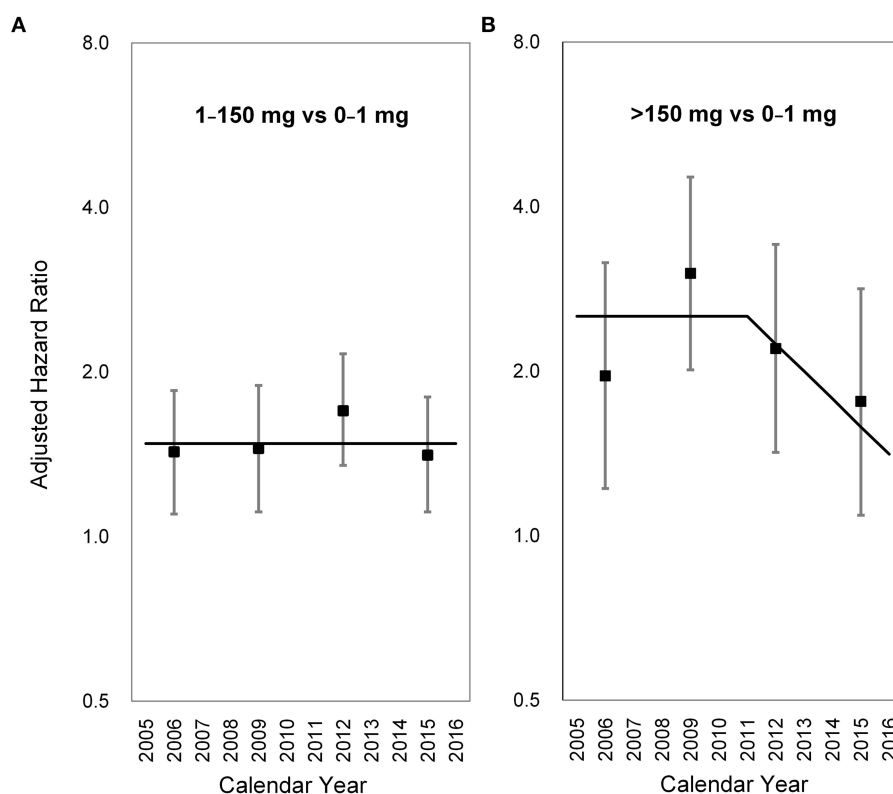


FIGURE 2

Long-term trends in the adjusted hazard ratio for upper tract urothelial carcinoma occurrence. (A) 1–150 mg vs. 0–1 mg, (B) >150 mg vs. 0–1 mg. Square points: adjusted hazard ratios from the piecewise constant hazard model. Vertical lines: 95% confidence intervals of the adjusted hazard ratios from the piecewise constant hazard model. Solid lines: adjusted hazard ratios from the slope-change model.

3.5. Latency period in the older population

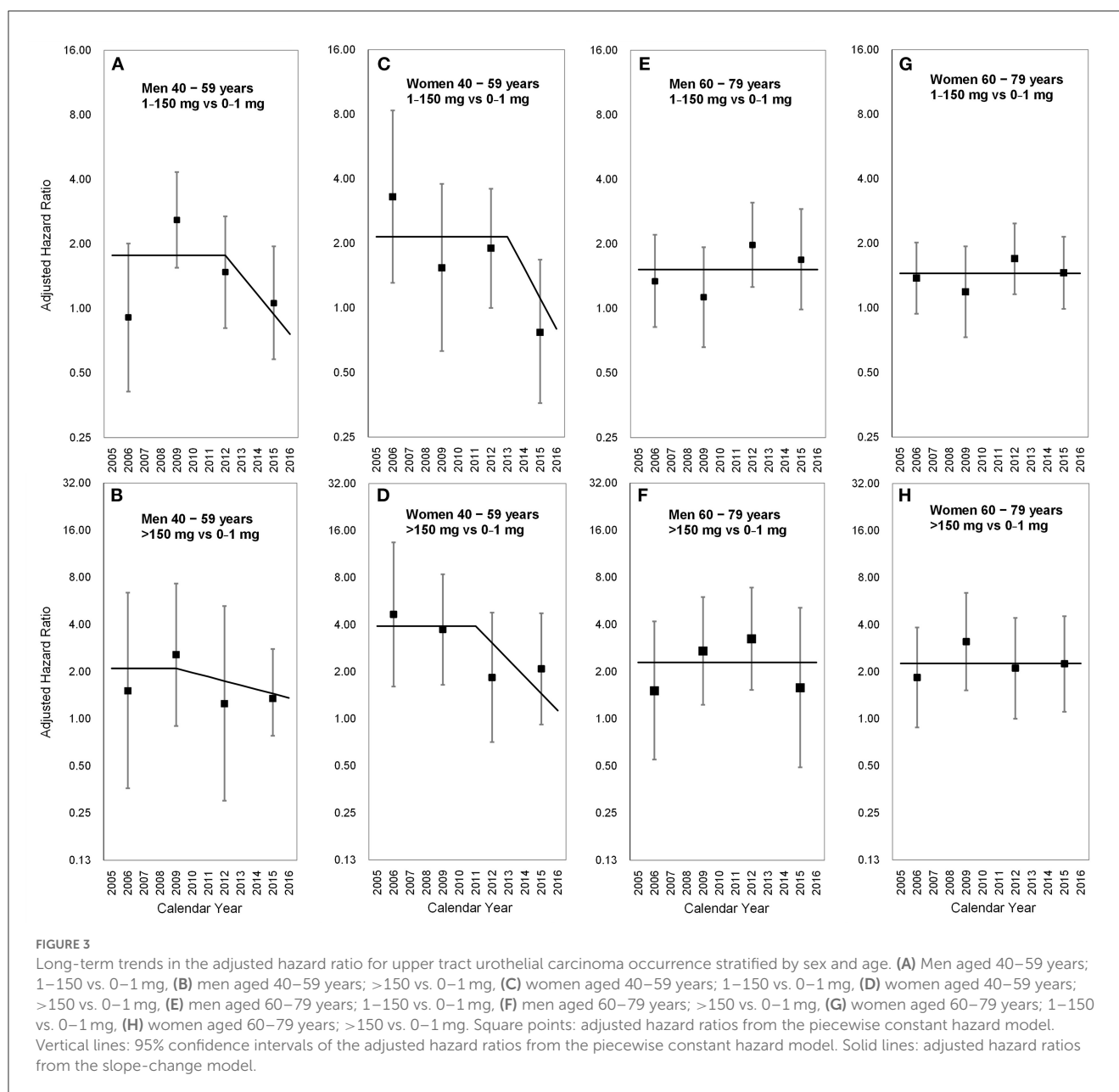
In the aged population (60 and 79 years), the aHRs among different time periods were not obvious in the subgroups of participants stratified by either sex or CDAE (Table 3, Figure 3). The selected proportional hazard models showed that the aHRs between 2005 and 2016 were 1.52 (95% CI 1.18–1.95; Figure 3E), 2.29 (95% CI 1.46–3.59; Figure 3F), 1.45 (95% CI 1.18–1.77; Figure 3G), and 2.26 (95% CI 1.57–3.26; Figure 3H).

4. Discussion

By investigating a nationwide cohort, our study revealed that the risk of UTUC decreased in the 7th year after the ban on AA in Taiwan. The latency period between the latest AA exposure and the identification of UTUC varied with sex, dose of exposure, and age. The risk of UTUC decreased in the 8th year after the ban of AA in middle-aged men who had exposure doses of 1–150 mg. Likewise, the risk of UTUC started to decrease in the 9th and 7th years after the ban on AA in middle-aged women who had exposure doses of 1–150 mg and >150 mg, respectively. In addition, the risk of UTUC disappeared approximately 10 years after the ban on AA in these women. No significant change in risk was observed in people aged ≥ 60 years.

Several studies have investigated the carcinogenesis of UTUC by AA. When the cells metabolize AA, the main components of AA, AA I and II become a reactive intermediate which binds to DNA. Then, aristolactam-DNA adducts can be detected in the DNA of cells exposed to AA (24). Besides, aristolactam-DNA adducts have been also identified in renal tissues from the patients with Balkan endemic nephropathy (4), and Taiwanese UTUC patients (6). In a human *p53* knock-in mice embryonic fibroblast cell line (Hupki), the signature mutation pattern, A:T to T:A transversion, was observed after exposure to AA (25). This mutation pattern have been also discovered in the animal models (26, 27), and urothelial carcinoma patients who ever used AA (28). In addition, a high mutation burden was observed in AA-related UTUCs when compared with smoking-related UTUC (29). Although it was difficult to distinguish mutated driver or passenger genes among the average 524 genes in each AA-related UTUC, several driver genes were frequently identified, including *TP53* (58%), *NRAS* (15%), *FGFR3* (8%), and *HRAS* (4%) (29).

Although the health authorities banned on AA according to the molecular (4, 6, 30) and epidemiological evidence (7), the incidence of UTUC seemed not to decrease immediately in the areas with nationwide exposure to AA (31). This implied that AA might have a longer latency period for UTUC. Recently, Jhuang et al. reported that the number of UTUC cases started to decrease after 2010 in Taiwan (12). Accordingly, our Taiwanese cohort was the ideal



model to investigate the latency period of AA-induced UTUC based on the below reasons, (1) nationwide exposure of AA, (2) the sharp interruption date of AA usage, (3) the nationwide health insurance which reimbursed AA-CHPs, and (4) the identification of the trend changes of UTUC incidence.

Previous population-based studies revealed that exposure to higher doses of AA resulted in a higher risk of UTUC (7, 20). Our analysis revealed the same finding and further identified the decreasing trend of UTUC risk with time after the ban of AA usage was obvious in the population who took CDAE of >150 mg of AA. This finding indicated that AA could be considered the major carcinogen in people exposed to a high dose of AA. When the responsible carcinogen, AA, was removed, the causal relationship was clearly confirmed by the decreasing risk of UTUC in Taiwan. Although there is no available literature reporting the

risk change of UTUC in patients with different dosages of AA exposure, the evidence from studies considering the behavior of cigarette smoking cessation might support a similar phenomenon. The Korean National Health Insurance (NHI) Service database reported that a more reduced risk of all cancers was noted in the smoking reducers of heavy to light smokers than in moderate to light smokers (32).

Our results did not reveal a significant decreasing trend in UTUC risk in elderly people. The possible reasons include: (1) the competing carcinogens for the development of UTUC and (2) the difference in latency periods between long-term and short-term exposure to AA. Since several carcinogens, such as AA (3, 6, 7), smoking (33), and arsenic (20), may contribute to UTUC occurrence, the aged people were logically exposed to more kinds or higher cumulative dosages of carcinogens than the young or

middle-aged people. No literature has disclosed the effects of age on the trend of risk of AA-related disease until now, but other carcinogens, such as cigarette smoking, have addressed this issue (34). Using the US National Health Interview Survey for 1997 to 2014, which was linked to the National Death Index, Thomson et al. observed that smokers who quit smoking at an older age had a lower cancer mortality risk than those who quit smoking at a younger age (34).

Unlike in the United States (35), the UTUC risk was not significantly higher in men than in women in Taiwan (6, 31). Our studies revealed that Taiwanese women had taken more AA-CHPs than men. AA-induced UTUCs were more frequently observed in women in a previous cohort (36). The current investigation revealed a clear decreasing trend in UTUC risk after the ban of AA in middle-aged women regardless of AA dose. Although decreasing trends were also observed in middle-aged men regardless of AA dose, men may have multiple carcinogens. For example, cigarette smoking, a common risk factor for UC, was significantly higher in men (approximately 25–40%) than in women (4%) in Taiwan (37). Chen et al. also reported that male patients with UTUC smoked more than female patients in a Taiwanese cohort (36). Once AA was banned, a significant proportion of men were still exposed to carcinogens from cigarette smoking, which might mitigate the decreasing trend of UTUC.

This study has several limitations. First, only the herbal prescriptions reimbursed by the Taiwan NHI between 2000 and 2005 were used for the dosage calculation of AA exposure. We would underestimate the doses because the AA-CHPs prescribed before 2000 or not reimbursed by NHI were not included in this study. Second, some participants might be exposed to AA from the unidentified sources other than the AA-CHP reimbursed by NHI after 2005. Since our finding revealed the ban of AA reduced the incidence of UTUC, these unidentified sources of AA would be minor. Third, even Taiwan NHI covers more than 98% of the population and offers convenient medical access, it may not avoid underdiagnosed given their asymptomatic nature. Patients with either gross or microscopic hematuria can easily access medical resources. This mitigated the selection bias among populations with different doses of AA. Fourth, few UTUC cases in some subgroups might make the estimation of hazard ratio or hazard change imperfect. Even when we used the national database, the rare disease (cancer) still limited the total number of available cases for the analysis. Fifth, not all known carcinogens have been identified. Exposure to AA and arsenic, but not smoking behavior, was measured in this study. This was a natural limitation of the national database, which included only disease codes and prescriptions. The lack of information on smoking behavior made the analysis of this carcinogen impossible. In addition, some possible confounding factors, such as family history, occupation, and education level were not included in this study.

5. Conclusion

After the ban on AA was implemented, a decreasing trend in the incidence of UTUC was observed, especially in middle-aged women with AA exposure and in men with moderate doses of AA

exposure. The latency period between AA exposure and UTUC development varied with age, dose of AA exposure, and sex.

Data availability statement

The data analyzed in this study is subject to the following licenses/restrictions: The data that support the findings of this study are available from the Health and Welfare Data Science Center but restrictions apply to the availability of these data, which were used under license for the current study, and so are not publicly available. Data are however available from the authors upon reasonable request and with permission of the Ministry of Health and Welfare, Executive Yuan, Taiwan. Requests to access these datasets should be directed to <https://www.apre.mohw.gov.tw/>.

Ethics statement

The studies involving human participants were reviewed and approved by National Taiwan University Hospital. Written informed consent for participation was not required for this study in accordance with the national legislation and the institutional requirements.

Author contributions

Conceptualization and writing: J-RJ and C-HC. Methodology and data interpretation: J-RJ, W-CL, and C-HC. Investigation: J-RJ, P-CC, and T-CH. Statistical analysis: J-RJ and W-CL. Writing review and editing: C-HC, Y-SP, and W-CL. All authors contributed to the article and approved the submitted version.

Funding

This work was partly funded by research grants to C-HC (MOST 108-2314-B-002-079-MY3) from the National Science and Technology Council, Executive Yuan, Taiwan.

Acknowledgments

We acknowledge the help and data resource support from the Health and Welfare Data Science Center.

Conflict of interest

The authors declare that the research was conducted in the absence of any commercial or financial relationships that could be construed as a potential conflict of interest.

Publisher's note

All claims expressed in this article are solely those of the authors and do not necessarily represent those of

their affiliated organizations, or those of the publisher, the editors and the reviewers. Any product that may be evaluated in this article, or claim that may be made by its manufacturer, is not guaranteed or endorsed by the publisher.

References

1. Vanherweghem JL, Depierreux M, Tielemans C, Abramowicz D, Dratwa M, Jadoul M, et al. Rapidly progressive interstitial renal fibrosis in young women: association with slimming regimen including Chinese herbs. *Lancet*. (1993) 341:387–91. doi: 10.1016/0140-6736(93)92984-2
2. But PP. Need for correct identification of herbs in herbal poisoning. *Lancet*. (1993) 341:637. doi: 10.1016/0140-6736(93)90404-5
3. Nortier JL, Martinez MC, Schmeiser HH, Arlt VM, Bieler CA, Petein M, et al. Urothelial carcinoma associated with the use of a Chinese herb (*Aristolochia fangchi*). *N Engl J Med*. (2000) 342:1686–92. doi: 10.1056/NEJM200006083422301
4. Grollman AP, Shibutani S, Moriya M, Miller F, Wu L, Moll U, et al. Aristolochic acid and the etiology of endemic (Balkan) nephropathy. *Proc Natl Acad Sci USA*. (2007) 104:12129–34. doi: 10.1073/pnas.0701248104
5. Hsieh SC, Lin IH, Tseng WL, Lee CH, Wang JD. Prescription profile of potentially aristolochic acid containing Chinese herbal products: an analysis of National Health Insurance data in Taiwan between 1997 and 2003. *Chin Med*. (2008) 3:13. doi: 10.1186/1749-8546-3-13
6. Chen CH, Dickman KG, Moriya M, Zavdil J, Sidorenko VS, Edwards KL, et al. Aristolochic acid-associated urothelial cancer in Taiwan. *Proc Natl Acad Sci USA*. (2012) 109:8241–6. doi: 10.1073/pnas.1119920109
7. Lai MN, Wang SM, Chen PC, Chen YY, Wang JD. Population-based case-control study of Chinese herbal products containing aristolochic acid and urinary tract cancer risk. *J Natl Cancer Inst*. (2010) 102:179–86. doi: 10.1093/jnci/djp467
8. Lai MN, Lai JN, Chen PC, Hsieh SC, Hu FC, Wang JD. Risks of kidney failure associated with consumption of herbal products containing Mu Tong or Fangchi: a population-based case-control study. *Am J Kidney Dis*. (2010) 55:507–18. doi: 10.1053/j.ajkd.2009.10.055
9. Schwetz BA. From the Food and Drug Administration. *JAMA*. (2001) 285:2705. doi: 10.1001/jama.285.21.2705-JFD10005-3-1
10. Kessler DA. Cancer and herbs. *N Engl J Med*. (2000) 342:1742–3. doi: 10.1056/NEJM200006083422309
11. Cheung TP, Xue C, Leung K, Chan K, Li CG. Aristolochic acids detected in some raw Chinese medicinal herbs and manufactured herbal products—a consequence of inappropriate nomenclature and imprecise labelling? *Clin Toxicol*. (2006) 44:371–8. doi: 10.1080/15563650600671712
12. Kanse SM, Etscheid M. Factor VII activating protease (FSAP): caught in the cross-fire between polycations and polyanions. *J Thromb Haemost*. (2010) 8:556–8. doi: 10.1111/j.1538-7836.2009.03718.x
13. Wang SM, Lai MN, Chen PC, Pu YS, Lai MK, Hwang JS, et al. Increased upper and lower tract urothelial carcinoma in patients with end-stage renal disease: a nationwide cohort study in Taiwan during 1997–2008. *Biomed Res Int*. (2014) 2014:149750. doi: 10.1155/2014/149750
14. Hsieh CY, Su CC, Shao SC, Sung SF, Lin SJ, Kao Yang YH, et al. Taiwan's National Health Insurance Research Database: past and future. *Clin Epidemiol*. (2019) 11:349–58. doi: 10.2147/CLEP.S196293
15. Chiang CJ, Wang YW, Lee WC. Taiwan's nationwide cancer registry system of 40 years: past, present, and future. *J Formos Med Assoc*. (2019) 118:856–8. doi: 10.1016/j.jfma.2019.01.012
16. Chiang CJ, You SL, Chen CJ, Yang YW, Lo WC, Lai MS. Quality assessment and improvement of nationwide cancer registration system in Taiwan: a review. *Jpn J Clin Oncol*. (2015) 45:291–6. doi: 10.1093/jjco/hyu211
17. Deng JS. *Quality Evaluation of Fang-Ji and Analysis of Marker Constituents*. Institute of Chinese Pharmaceutical Sciences, China Medical University (2002).
18. Chuang MS, Hsu YH, Chang HC, Lin JH, Liao CH. *Studies on Adulteration and Misusage of Marketed Akebiae Caulis*. Taiwan (2002). p. 104–119. *Annual report of investigational studies in Food and Drugs Administration in Taiwan*. Report No.: 20. Department of Health.
19. Jong TT, Lee MR, Hsiao SS, Hsai JL, Wu TS, Chiang ST, et al. Analysis of aristolochic acid in nine sources of Xixin, a traditional Chinese medicine, by liquid chromatography/atmospheric pressure chemical ionization/tandem mass spectrometry. *J Pharm Biomed Anal*. (2003) 33:831–7. doi: 10.1016/S0731-7085(03)00310-8
20. Chen CH, Grollman AP, Huang CY, Shun CT, Sidorenko VS, Hashimoto K, et al. Additive effects of arsenic and aristolochic acid in chemical carcinogenesis of upper urinary tract urothelium. *Cancer Epidemiol Biomarkers Prev*. (2021) 30:317–25. doi: 10.1158/1055-9965.EPI-20-1090
21. Chiang HS, Guo HR, Hong CL, Lin SM, Lee EF. The incidence of bladder cancer in the black foot disease endemic area in Taiwan. *Br J Urol*. (1993) 71:274–8. doi: 10.1111/j.1464-410X.1993.tb15942.x
22. Tseng WP. Blackfoot disease in Taiwan: a 30-year follow-up study. *Angiology*. (1989) 40:547–58. doi: 10.1177/000331978904000606
23. Zhang Z, Reinikainen J, Adeleke KA, Pieterse ME, Groothuis-Oudshoorn CGM. Time-varying covariates and coefficients in Cox regression models. *Ann Transl Med*. (2018) 6:121. doi: 10.21037/atm.2018.02.12
24. Pfau W, Schmeiser HH, Wiessler M. 32P-postlabelling analysis of the DNA adducts formed by aristolochic acid I and II. *Carcinogenesis*. (1990) 11:1627–33. doi: 10.1093/carcin/11.9.1627
25. Liu Z, Hergenbahn M, Schmeiser HH, Wogan GN, Hong A, Hollstein M. Human tumor p53 mutations are selected for in mouse embryonic fibroblasts harboring a humanized p53 gene. *Proc Natl Acad Sci USA*. (2004) 101:2963–8. doi: 10.1073/pnas.0308607101
26. Chen L, Mei N, Yao L, Chen T. Mutations induced by carcinogenic doses of aristolochic acid in kidney of Big Blue transgenic rats. *Toxicol Lett*. (2006) 165:250–6. doi: 10.1016/j.toxlet.2006.04.008
27. Mei N, Arlt VM, Phillips DH, Heflich RH, Chen T. DNA adduct formation and mutation induction by aristolochic acid in rat kidney and liver. *Mutat Res*. (2006) 602:83–91. doi: 10.1016/j.mrfmmm.2006.08.004
28. Lord GM, Hollstein M, Arlt VM, Roufosse C, Pusey CD, Cook T, et al. adducts and p53 mutations in a patient with aristolochic acid-associated nephropathy. *Am J Kidney Dis*. (2004) 43:e11–7. doi: 10.1053/j.ajkd.2003.11.024
29. Hoang ML, Chen CH, Sidorenko VS, He J, Dickman KG, Yun BH, et al. Mutational signature of aristolochic acid exposure as revealed by whole-exome sequencing. *Sci Translat Med*. (2013) 5:197ra102. doi: 10.1126/scitranslmed.3006200
30. Jelakovic B, Karanovic S, Vukovic-Lela I, Miller F, Edwards KL, Nikolic J, et al. Aristolochic acid-DNA adducts are a biomarker of environmental exposure to aristolochic acid. *Kidney Int*. (2012) 81:559–67. doi: 10.1038/ki.2011.371
31. Bureau of Health Promotion DoH, Taiwan. *The Incidence of Renal Pelvic and Ureteral Tumor in Taiwan*. Available online at: <https://cris.hpa.gov.tw/pagepub/Home.aspx?itemNo=cr.q.10> (accessed October 1, 2022).
32. Choi S, Chang J, Kim K, Park SM, Lee K. Effect of smoking cessation and reduction on the risk of cancer in Korean men: a population based study. *Cancer Res Treat*. (2018) 50:1114–20. doi: 10.4143/crt.2017.326
33. Pommer W, Bronder E, Klimpel A, Helmert U, Greiser E, Molzahn M. Urothelial cancer at different tumour sites: role of smoking and habitual intake of analgesics and laxatives. Results of the Berlin urothelial cancer study. *Nephrol Dial Transpl*. (1999) 14:2892–7. doi: 10.1093/ndt/14.12.2892
34. Thomson B, Emberson J, Lacey B, Lewington S, Peto R, Islami F. Association of smoking initiation and cessation across the life course and cancer mortality: prospective study of 410,000 US adults. *JAMA Oncol*. (2021) 7:1901–3. doi: 10.1001/jamaoncol.2021.4949
35. Jemal A, Murray T, Ward E, Samuels A, Tiwari RC, Ghafoor A, et al. Cancer statistics, 2005. *CA Cancer J Clin*. (2005) 55:10–30. doi: 10.3322/canjclin.55.1.10
36. Yang HY, Wang JD, Lo TC, Chen PC. Occupational exposure to herbs containing aristolochic acids increases the risk of urothelial carcinoma in Chinese herbalists. *J Urol*. (2013) 189:48–52. doi: 10.1016/j.juro.2012.08.090
37. Bureau of Health Promotion DoH, Taiwan. *Adult Smoking Behavior Surveillance System*. (2022). Available online at: <https://www.hpa.gov.tw/Pages/List.aspx?nodeid=1719> (accessed October 1, 2022).

Supplementary material

The Supplementary Material for this article can be found online at: <https://www.frontiersin.org/articles/10.3389/fpubh.2023.1072864/full#supplementary-material>