



OPEN ACCESS

EDITED BY

Liye Zou,
Shenzhen University, China

REVIEWED BY

Shijie Liu,
Shanghai University of Sport, China
Lisa Smith,
Arizona State University, United States

*CORRESPONDENCE

Shenghua Lu
lushenghua6666@126.com

SPECIALTY SECTION

This article was submitted to
Public Mental Health,
a section of the journal
Frontiers in Public Health

RECEIVED 15 May 2022

ACCEPTED 30 June 2022

PUBLISHED 04 August 2022

CITATION

Zhang Y and Lu S (2022) Effects of
traditional Chinese exercises on
mental health in individuals with drug
rehabilitee: A systematic review and
meta-analysis.
Front. Public Health 10:944636.
doi: 10.3389/fpubh.2022.944636

COPYRIGHT

© 2022 Zhang and Lu. This is an
open-access article distributed under
the terms of the [Creative Commons
Attribution License \(CC BY\)](https://creativecommons.org/licenses/by/4.0/). The use,
distribution or reproduction in other
forums is permitted, provided the
original author(s) and the copyright
owner(s) are credited and that the
original publication in this journal is
cited, in accordance with accepted
academic practice. No use, distribution
or reproduction is permitted which
does not comply with these terms.

Effects of traditional Chinese exercises on mental health in individuals with drug rehabilitee: A systematic review and meta-analysis

Yulong Zhang¹ and Shenghua Lu^{2,3*}

¹Hunan Judicial Police Vocational College, Changsha, China, ²College of Sports Science, Jishou University, Jishou, China, ³Hunan Academy of Education Sciences, Changsha, China

Purpose: The intent of this systematic review and meta-analysis was to examine the effects of Traditional Chinese Exercise (TCE) on mental health and drug cravings in drug rehabilitees.

Methods: Six electronic databases (PubMed, Web of Science, MEDLINE, CINAHL, PsycArticles, and CNKI) were searched to identify the potential literature from inception to March 2022. The controlled studies with a pro-posttest design that investigated the effects of TCE on mental health (depression, anxiety, drug craving, and sleep quality) were included. The effect sizes were calculated using the random-effect models with a 95% confidence interval. The Physiotherapy Evidence Database (PEDro) scale was employed to evaluate study quality.

Results: A total of 10 studies (740 participants, mean age 35 years old) were included in this study. The pooled results showed that TCE produced significant improvements in depression (SMD = 0.65, 95% CI 0.29 to 1.02, $p < 0.01$), anxiety (SMD = 0.98, 95% CI 0.44 to 1.53, $p < 0.01$), and drug craving (SMD = 0.87, 95% CI 0.54 to 1.21, $p < 0.01$) compared to the control group. The subgroup analysis results showed that TCE resulted in significant improvements in depression compared to active intervention (SMD = 0.33, 95% CI 0.07 to 0.60) or passive intervention (SMD = 1.07, 95% CI 0.40 to 1.74). A significant improvement in depression was observed in both male and female drug rehabilitee ($p < 0.05$). Moreover, Tai Chi (SMD = 0.69, 95% CI 0.19 to 1.18) or Qigong (SMD = 0.49, 95% CI 0.24 to 0.74) exercise, 3–4 times per week (SMD = 1.06, 95% CI 0.39 to 1.74) or ≥ 5 times (SMD = 0.39, 95% CI 0.12 to 0.66), >45 min (SMD = 0.62, 95% CI 0.09 to 1.15) or ≤ 45 min (SMD = 0.68, 95% CI 0.10 to 1.27), and for a duration of 12 weeks (SMD = 0.84, 95% CI 0.15 to 1.54) produced significant improvement in depression.

Conclusion: This current study suggests that TCE (Tai Chi, Qigong) may have benefits in alleviating depression, anxiety, and drug cravings in drug rehabilitees. Further studies are required to verify our results through the implementation of well-designed experimental protocols.

KEYWORDS

Tai Chi, Qigong, depression, anxiety, drug addiction

Introduction

Drug addiction (also known as substance use disorder) is a progressive and elapsing mental illness that causes individuals to lose control of substance abuse despite its associated detrimental (life-threatening) effects (1). Specifically, drug addiction has been widely accepted as being associated with significant changes in brain structure and function, resulting in the desensitization of drugs increasing dosage is needed to help drug users produce the same effect (1). The global prevalence of illicit drug use has reached 5.2% in 2015 (2). This number has increased in some countries/regions; for example, authoritative data have indicated that roughly 15.3% of US citizens have been diagnosed with drug addiction or dependence (3, 4). Similarly, in another country, Australia, this number (illicit drug use) has reached 13% among individuals aged 14 and greater (5). Compared with these above-mentioned countries, Yunan has been widely recognized as one of the provinces most affected by drug abuse in China and its estimated prevalence (registered data of illicit drug users) was almost 1% in spite of the standardized punishment policy (6).

The detrimental consequences of this mental illness are linked to a greater susceptibility of being affected by HIV/AIDS and hepatitis C, a high crime rate, and the development of other co-existing chronic illnesses, such as cardiovascular disease (7). In addition, mental health problems (anxiety, depression, and insomnia) are commonly reported among drug users (8). This comorbidity of mental illnesses contributes to a reduced quality of life, disability, and premature death (9, 10). Economic consequences of drug abuse involve immeasurable harm to public health and safety worldwide, with a global cost of about USD 35 billion per year (11). These financial burdens, to a large extent, have challenged the healthcare system in countries of different economic levels. Direct costs and hospitalization are not affordable for families with drug users, especially in developing and economically disadvantaged countries and regions. Taken together, drug users should receive greater attention from the research community and clinicians.

Pharmacological treatments for drug users have mainly focused on specific receptors within the dopaminergic system, glutamate system, and trace amine system, and they can target the addiction-related systems in the brain to reduce the level of withdrawal and other symptoms (1, 12). Of note, a drug's side effects on the physical and psychological health of users should be pointed out as well. To this end, non-pharmacological treatments have been developed, such as cognitive-behavioral therapy, contingency management, residential rehabilitation based therapies, and repetitive transcranial magnetic stimulation (13). Besides these approaches, exercise as a cost-effective treatment has been increasingly used to alleviate symptoms related to drug addiction (14, 15). A previous review published in 2014 has reported the beneficial effects of physical exercise for drug users (16). With an increasing number of studies on

this topic in the last 10 years, an updated review is urgently needed. In addition, this meta-analysis did not focus on a unique exercise modality alone - traditional mindful exercise. Traditional Chinese exercises (TCEs) include Tai Chi and Qigong, which have attracted an increasing number of scholars investigating their benefits on populations (e.g., reducing one's risk of falls and improving mental health). TCE is characterized by slow movements, a deep breathing technique, and meditation training and these unique elements can help drug users alleviate negative emotions caused by withdrawal. Ultimately, the exercises assist one in achieving symptomatic management and obtaining a better quality of life. Indeed, earlier studies have suggested that TCE contributes to decreasing the symptoms of depression and anxiety in adults with or without diseases, such as healthy adults (17) and adults with major depressive disorder (18) or chronic obstructive pulmonary disease (19). Furthermore, individuals who practice TCE might be able to improve their wellbeing (20).

Although previous studies have investigated the beneficial effects of TCE on mental health in different populations, few systematic review studies have investigated the effects of TCE on mental health in subjects suffering from substance use disorders (21, 22). Additionally, two studies reported contradictory results. One study found that Tai Chi had a significant effect in reducing depression (21), while another study found the opposite (22). Moreover, the inclusion criteria of both reviews were not very strict. For example, the participants in Zhang et al.'s study included drug users and alcohol abusers. Different types of intervention (e.g., Qigong + medication) were included in the experimental group (21). Moreover, the quality of included studies was low because of the nature of non-randomized controlled studies. For example, the review study of Liu et al. included one randomized controlled study and six non-randomized controlled studies (22). It also did not investigate the effects of the dose of intervention on mental health in drug rehabitee due to the limited number of included studies.

Therefore, based on the limited information of these systematic reviews, an updated meta-analysis on these unique exercise modalities should receive greater attention, and the results could be used to help clinicians treat symptoms and drug users if the exercises are practiced on a regular basis.

Methods

Search strategy

We searched for publications in six electronic databases (PubMed, Web of Science, MEDLINE, CINAHL, PsycArticles, and CNKI) from their inception until March 2022. The following terms were combined to retrieve potential studies: (1) "Tai Chi" OR "Taijiquan" OR "Qigong" OR "Baduanjin" OR "Wuqingxi" OR "Dao Yin"; (2) "Amphetamine" OR "Cocaine" OR "Heroin"

OR “Morphine” OR “Methadone” OR “Cannabis” OR “Drug Abuse” OR “Drug Dependence” OR “Substance Abuse”; (3) “depression” OR “anxiety” OR “sleep*” OR “drug craving”. In addition, manually search for bibliographies and systematic review studies were performed to identify relevant studies. The current meta-analysis study was followed by the PRISMA (Preferred Reporting Items for Systematic Reviews and Meta-Analyses) (23).

Inclusion and exclusion criteria

Studies were included if they met the following criteria: (i) participants had a drug addiction; (ii) participants only practiced Tai Chi, Qigong, or other types of TCE intervention in the experimental group, and did not use TCE interventions in the control group; (iii) the study reported at least one outcome measurement (i.e., depression, anxiety, and sleep). (v) the study was published in English or Chinese. The exclusion criteria were: (i) other types of studies (e.g., animal or *in vitro* studies, abstracts, case reports, reviews); (ii) the control group included Tai Chi or Qigong exercise; (iii) the intervention duration was not no less than 8 weeks; (iv) there was insufficient information to calculate the effect size of the outcome measurement.

Data extraction and quality assessment

Two authors independently assessed the eligible studies by screening the titles, abstracts, and full texts. A mutual communication was conducted when two authors had disagreements on inclusion or exclusion criteria. The included articles were analyzed following the predesignated structure: author, year of publication, characteristics of subjects, sample size, sex, age, intervention protocol (frequency, time, type, duration, and intensity), outcome measurements (depression, anxiety, drug craving and sleep).

The quality of included studies was evaluated using the Physiotherapy Evidence Database (PEDro) scale (24) by two independent reviewers. This PEDro scale is a systematic tool with adequate content to assess the study quality that includes 11 items, of which Item 1 is not involved in calculating the total scores. The total scores ranged from 0 to 10. The study quality was classified as excellent (9–10 points), good (6–8 points), fair (4–5 points), and poor (<4 points) (24).

Statistical analysis

Comprehensive Meta-Analysis software v3 software (Biostat, NJ) was employed for data analyses in this meta-analysis study. The standardized mean difference (SMD) was expressed as the effect size (ES), with a corresponding 95%

confidence interval (CI) and *p* value (25). The SMD of each study was calculated by comparing the mean change from pre- to post-intervention in the experimental and control groups. The pooled ESs were determined using a randomized effect model and shown in a forest plot, and a positive ES value expressed a positive effect of TCE. The ES was commonly defined by three layers: small (0.2–0.49), moderate (0.50–0.79), and large (≥ 0.8) (26). Meanwhile, the I^2 statistic test was used to examine heterogeneity across studies. $I^2 < 25\%$, $I^2 < 50\%$, and $I^2 < 70\%$ were considered as low heterogeneity, moderate heterogeneity and high heterogeneity, respectively (27). Publication bias was examined using the funnel plot and Egger’s test, and it was not included if the number of included studies was less than 10. Sensitivity analysis was conducted to assess the stability of the results by excluding one study each time. Furthermore, subgroup analysis was performed to explore sources of heterogeneity by the dose of exercise: exercise type - Tai Chi and Qigong; exercise frequency - 1 to 2 times, 3 to 4 times, and more than 5 times per week; exercise duration- 12 weeks, 13–23 weeks, and 24 weeks or more; exercise session time - 30 to 45 min, and more than 45 min (28). The control group was divided into active group (i.e., recreation activity) and passive group (i.e., no treatment). The significance level was set at $p < 0.05$.

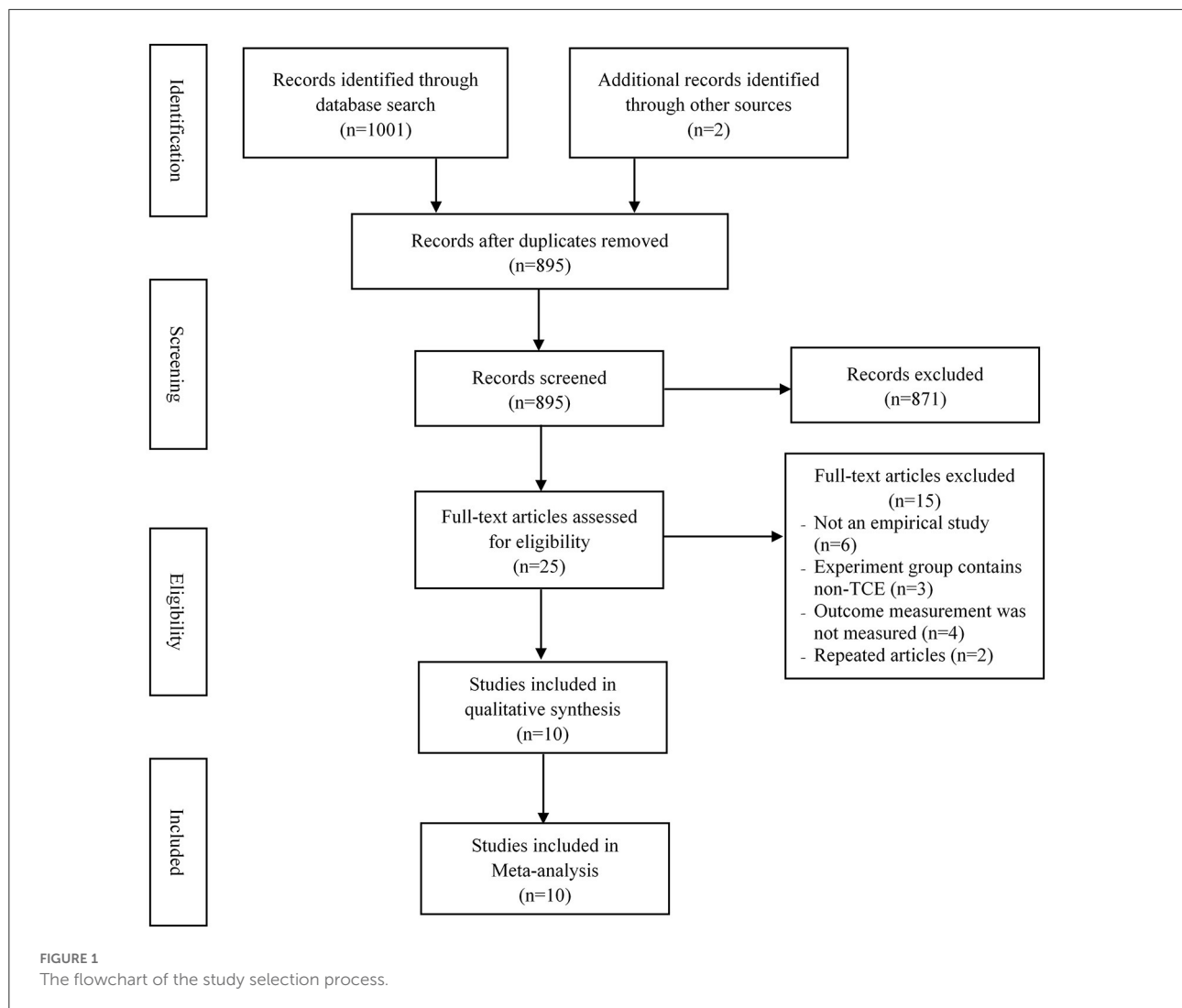
Results

Search results

The PRISMA flowchart (Figure 1) presents the study selection in the meta-analysis study. A total of 1,003 studies were retrieved from the database. After removing duplicates ($n = 108$), 895 studies were reviewed and 25 studies remained. Subsequently, 15 studies were excluded based on the reasons shown in the flowchart. Finally, 10 studies (29–38) were selected for inclusion in this meta-analysis.

Study characteristics

Table 1 presents the characteristics of the included studies. These studies were mainly conducted in China, with a total of 740 participants. Three studies were published in the English language (35, 36, 38). The mean age of participants was 35 years old. For TCE intervention, 8 studies used Tai Chi and 2 studies used Qigong exercise. The exercise session of the included studies ranged from 30 min to 80 min, the exercise frequency was 2 to 7 times per week, and the exercise intervention lasted between 12 and 24 weeks. With respect to outcomes, depression, anxiety, drug cravings, and sleep were measured in 10 studies (29–38), 8 studies (29–34, 37, 38), 3 studies (34, 35, 38), and 3 studies (32, 36, 37), respectively. Additionally, with regard



to outcome measurements, depression was measured using the self-rating depression scale (SDS) by Zung, the Baker self-rating depression scale (BDI), and the Hamilton Rating Scale for Depression (HRSD); anxiety was measured using the self-rating anxiety scale (SAS) by Zung; drug cravings were measured using the desire for speed questionnaire by Wang (39); and the Pittsburgh Sleep Quality Index (PSQI) was used to measure sleep quality.

The study quality assessment was used the PEDro scale (Table 2). The study quality scores ranged from 5 to 8 points, indicating that the included studies were considered as fair and had good methodological qualities. Only three studies used a blinding method to measure the outcomes (32, 36, 38).

Synthesized results

Depression was measured using SDS and BDI in the included studies. The pooled result from 10 studies (29–38) indicated that TCE had a positive effect on reducing depression compared to the control group (SMD = 0.65, 95% CI 0.29 to 1.02, $I^2 = 81.8\%$, $p < 0.01$) using a random-effects model (Figure 2). Publication bias was determined using the Egger's test (Egger's regression intercept = 0.95, $p > 0.05$) and funnel plot (Figure 3). Furthermore, sensitivity analysis by removing one study at a time examined the sources of heterogeneity. The result revealed that the exclusion of any one study from the analysis did not influence the overall findings (Figure 4). Additionally, excluding two studies (30, 32) that produced smaller effect sizes

TABLE 1 Characteristics of the included studies.

References	Mean age (years) Sample size	Gender	Time/Frequency/ Duration	Interventions		Instrument/ Outcomes	Findings
				Experiment (Details)	Control		
Sui (33)	30 E = 28; C = 30	Male	60min/3times/week 16 weeks	Qigong	No treatment	SDS/depression SAS/anxiety	The Qigong exercise had a significant effect in reducing the depression and anxiety symptoms compared to the control group.
Li et al. (35)	30 E = 17; C = 16	Female	80min/2times/week 24 weeks	Tai Chi	Recreation activity	HRSD/depression HWS/drug craving	There were no significant differences in depression and drug craving between Tai Chi and control groups.
Geng et al. (29)	36 E = 30; C = 27	Female	45min/5times/week 12 weeks	Tai Chi	Recreation activity	SDS/depression SAS/anxiety	The Tai Chi exercise had a significant effect in reducing the depression and anxiety symptoms compared to the control group.
Zhang and Zhu (38)	40 E = 38; C = 34	Male	50min/5times/week 24 weeks	Tai Chi	Recreation activity	BDI/depression SAS/anxiety DSQ/drug craving	The Tai Chi exercise had a significant effect in reducing the depression, anxiety and drug craving symptoms compared to the control group.
Wang (34)	38 E = 24; C = 25	Female	30min/6times/week 12 weeks	Tai Chi	Recreation activity	SDS/depression SAS/anxiety DSQ/drug craving	The Tai Chi exercise had a significant effect in reducing the depression, anxiety and drug craving symptoms compared to the control group.
Zhao (32)	39 E = 35; C = 37	Male	70min/3times/week 12 week	Tai Chi	No treatment	SDS/depression SAS/anxiety PSQI/sleep quality	The Tai Chi exercise had a significant effect in reducing the depression, anxiety and improving sleep quality compared to the control group.
Zheng (31)	36.5 E = 25; C = 27	Male	60min/5times/week 12 weeks	Tai Chi	Recreation activity	SDS/depression SAS/anxiety	The Tai Chi exercise had a significant effect in reducing the depression and anxiety symptoms compared to the control group.
Zhu et al. (36)	36 E = 42; C = 38	Female	60min/3- 5times/week 24 weeks	Tai Chi	Recreation activity	SDS/depression PSQI/sleep quality	The Tai Chi exercise had a significant effect in reducing the depression and improving sleep quality compared to the control group.
Fu et al. (37)	28 E = 100; C = 100	Female	30min/7times/week 20 weeks	Qigong	No treatment	SDS/depression SAS/anxiety PSQI/sleep quality	The Qigong exercise had a significant effect in reducing the depression, anxiety and improving sleep quality compared to the control group.
Zhu (30)	30 E = 50; C = 50	Male	60min/3times/week 15 weeks	Tai Chi	No treatment	SDS/depression SAS/anxiety	The Tai Chi exercise had a significant effect in reducing the depression and anxiety symptoms compared to the control group.

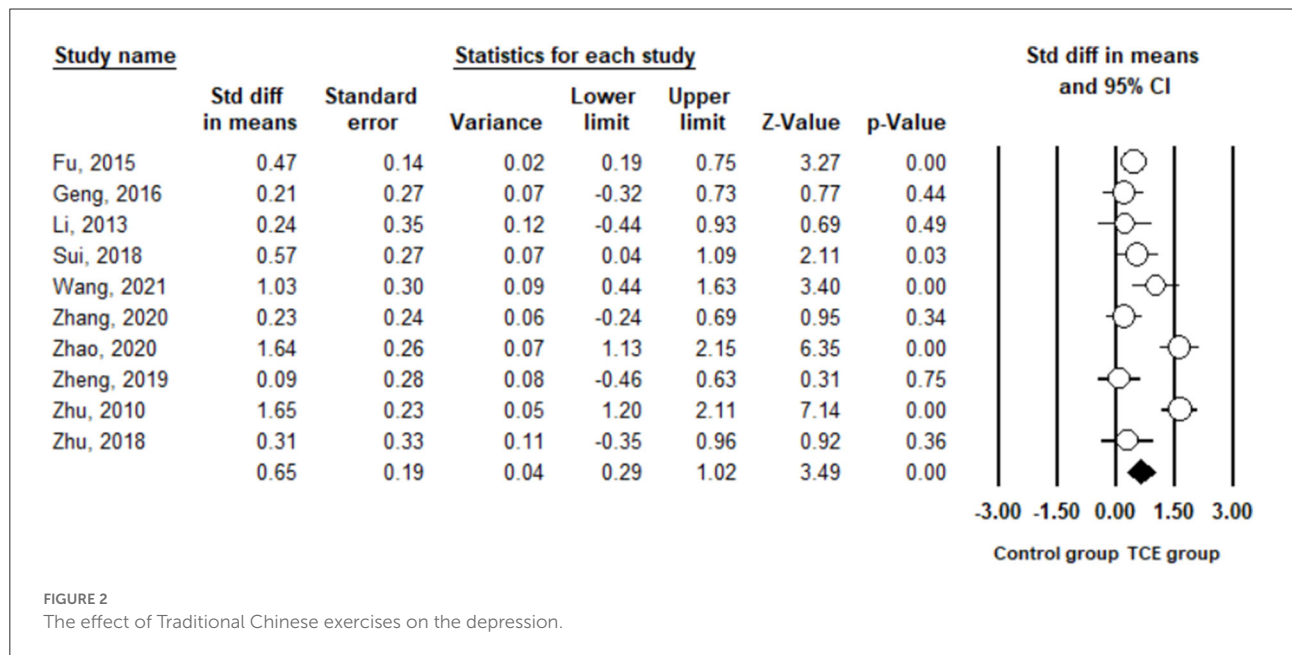
BDI, Baker self-rating depression scale; C, Control group; DSQ, Desire for speed questionnaire; E, Experimental group; HRSD, Hamilton Rating Scale for Depression; HWS, Rating Scale of Heroin Withdrawal Symptoms; SAS, Self-rating anxiety; SDS, Self-rating depression; PSQI, Pittsburgh Sleep Quality Index.

TABLE 2 Methodological quality of the included studies.

References	Score	Methodological quality	PEDro item number										
			1	2	3	4	5	6	7	8	9	10	11
Sui (33)	5	Fair	1	1	1	1				1		1	1
Li et al. (35)	5	Fair	1	1		1			1			1	1
Geng et al. (29)	5	Fair	1	1		1				1		1	1
Zhang and Zhu (38)	7	Good	1	1	1	1			1	1		1	1
Wang (34)	6	Good	1	1		1				1	1	1	1
Zhao (32)	8	Good	1	1	1	1		1	1	1		1	1
Zheng (31)	6	Good	1	1	1	1				1		1	1
Zhu et al. (36)	7	Good	1	1	1	1			1	1		1	1
Fu et al. (37)	6	Good	1	1		1				1	1	1	1
Zhu (30)	5	Fair	1	1		1				1		1	1

Studies were classified as having excellent (9–10), good (6–8), fair (4–5), or poor (<4).

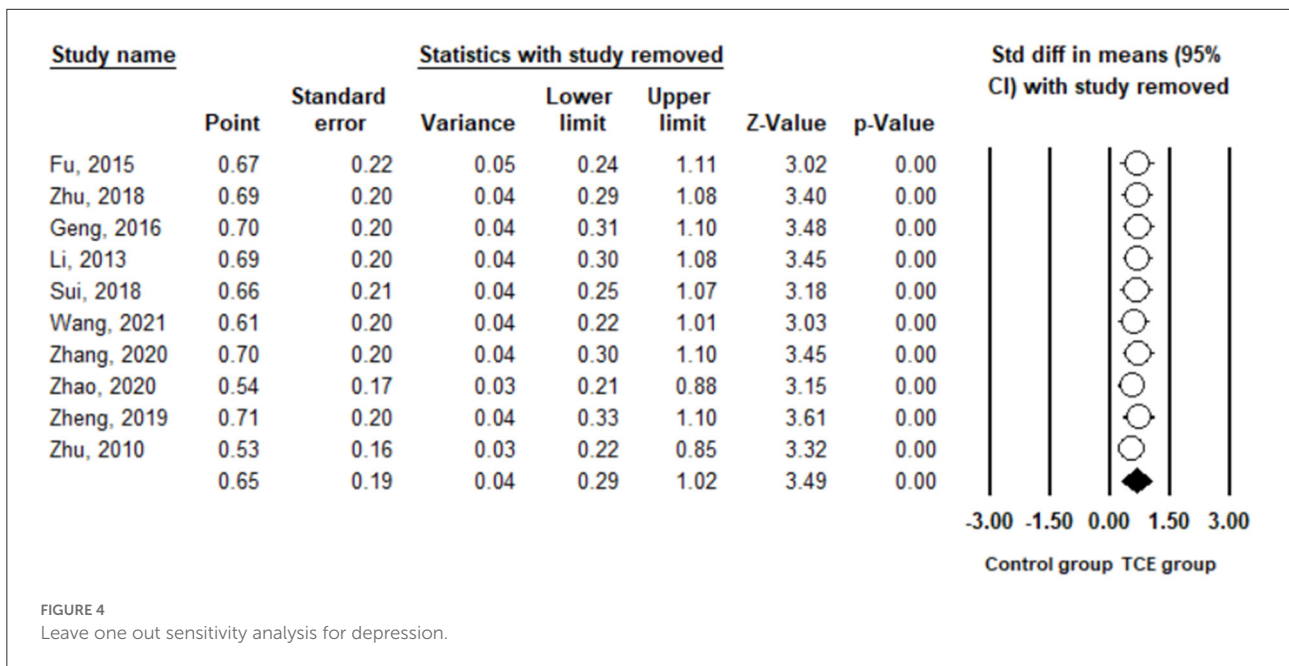
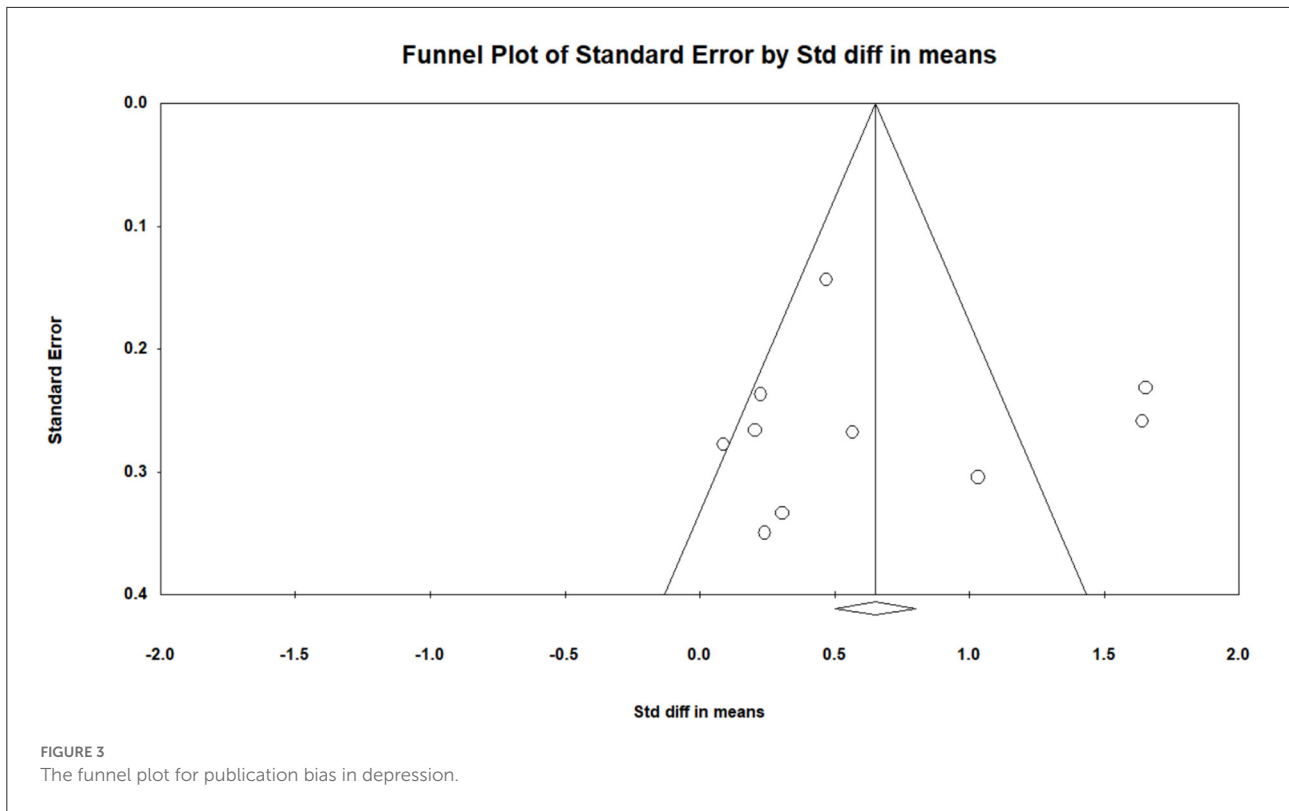
The PEDro scale involves (1) eligibility criteria; (2) random allocation; (3) concealed allocation; (4) similarity at baseline on key measures; (5) participant blinding; (6) instructor blinding; (7) assessor blinding; (8) more than 85% retention rate of at least one outcome; (9) intention-to-treat analysis; (10) between-group statistical comparison for at least one outcome; (11) point estimates and measures of variability provided for at least one outcome.



to in the overall estimate did not change the result (SMD = 0.40, 95% CI 0.22 to 0.58, $I^2 = 7.7%$, $p < 0.01$).

In the subgroup analysis (Table 3), when comparing active intervention (SMD = 0.33, 95% CI 0.07 to 0.60) with passive intervention (SMD = 1.07, 95% CI 0.40 to 1.74), significant improvements in depression were found in TCE. In particular, there was a greater magnitude of improvement in depression due to TCE compared to passive intervention. There was no significant difference in terms of sex. In other words, TCE showed a significant improvement for depression in both males (SMD = 0.84, 95% CI 0.16 to 1.52) and females (SMD = 0.46, 95% CI 0.21 to 0.71). With regard to the dose

of exercise, significant differences in effect sizes in terms of exercise type ($Q = 0.48$, $p = 0.49$), exercise frequency ($Q = 3.72$, $p = 0.16$), exercise duration ($Q = 3.20$, $p = 0.20$), and exercise session time ($Q = 0.03$, $p = 0.87$) were not observed between categorical variables. However, practicing TCE for 3–4 times (SMD = 1.06, 95% CI 0.39 to 1.74) or 5 times or more (SMD = 0.39, 95% CI 0.12 to 0.66) per week showed a significant improvement in depression compared to 1–2 times (SMD = 0.24, 95% CI -0.44 to 0.93) per week. Practicing TCE for 12 weeks (SMD = 0.84, 95% CI 0.15 to 1.54) showed a significant improvement for depression compared to 13–23 weeks (SMD = 0.76, 95% CI -0.004 to



1.53) and 24 weeks or more (SMD = 0.25, 95% CI -0.08 to 0.58).

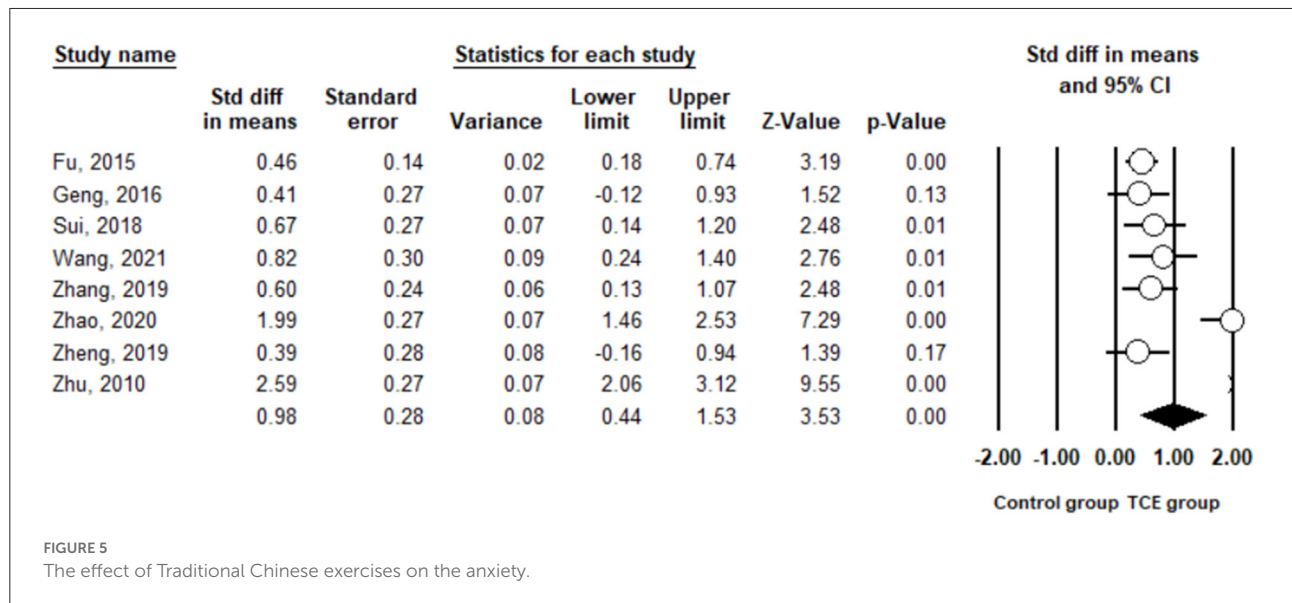
Anxiety was measured using the SAS in the included studies. The pooled result from eight studies (29–34, 37, 38) showed that TCE contributed to a significant reduction in anxiety compared

to the control group (SMD = 0.98, 95% CI 0.44 to 1.53, $I^2 = 90.4%$, $p < 0.01$) using a random-effects model (Figure 5). Furthermore, sensitivity analysis by removing one study at a time examined the sources of heterogeneity. The result revealed that the exclusion of any one study from the analysis did not

TABLE 3 Subgroup analysis for TCE versus control group on depression.

Categorical moderator	Level	No. of studies/comparisons	SMD	95% Confidence interval	I ² , %	Test for between-group heterogeneity		
						Q-value	df(Q)	p-value
Study design moderators								
Control type	Active	6	0.33	0.07 to 0.60	24.2 %	4.02	1	0.04
	Passive	4	1.07	0.40 to 1.74	89.8%			
Sex	Male	5	0.84	0.16 to 1.52	89.2%	1.08	1	0.30
	Female	5	0.46	0.21 to 0.71	21.2%			
Exercise moderators								
Exercise type	TC	8	0.69	0.19 to 1.18	85.0%	0.48	1	0.49
	Qigong	2	0.49	0.24 to 0.74	0%			
Frequency	1–2	1	0.24	–0.44 to 0.93	0%	3.72	2	0.16
	3–4	4	1.06	0.39 to 1.74	84.6%			
	≥5	5	0.39	0.12 to 0.66	42.1%			
Exercise duration	12 weeks	4	0.84	0.15 to 1.54	85.6%	3.20	2	0.20
	13–23 weeks	3	0.76	–0.004 to 1.53	89.5%			
	≥24 weeks	3	0.25	–0.08 to 0.58	0%			
Exercise session time	≤45	5	0.68	0.10 to 1.27	82.8%	0.03	1	0.87
	>45	5	0.62	0.09 to 1.15	84.6%			

SMD, standardized mean difference; df, degree of freedom.

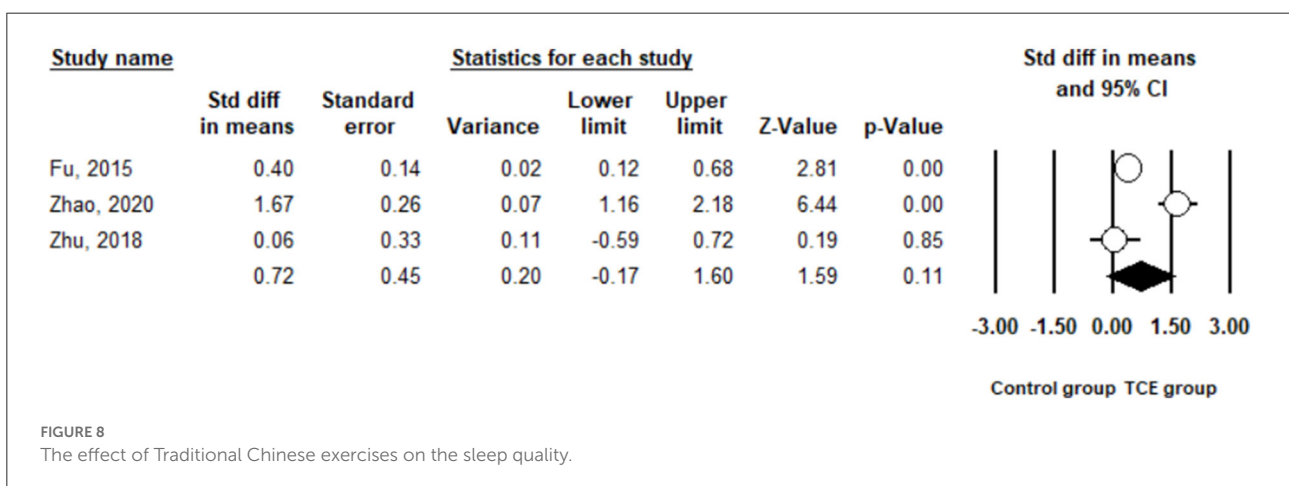
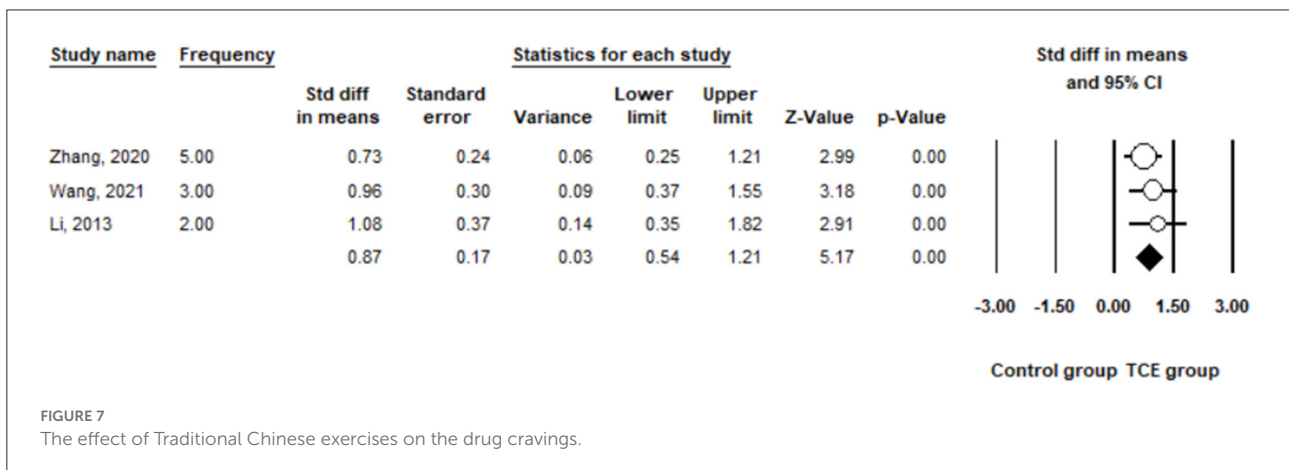
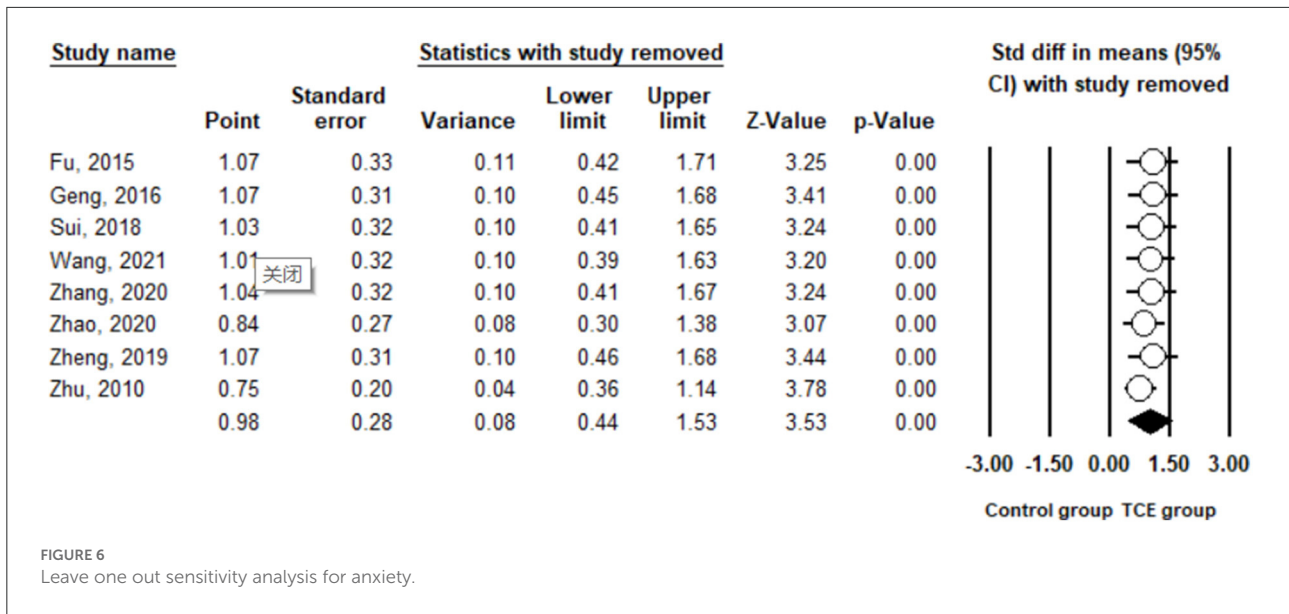


influence the overall findings (Figure 6). Additionally, excluding two studies (30, 32) that produced smaller effect sizes on the overall estimate did not change the positive result (SMD = 0.52, 95% CI 0.34 to 0.71, I² = 0%, p < 0.01).

Drug cravings were measured in the term of psychological cravings in the three included studies (34, 35, 38). The pooled results indicated a significant reduction in DSD in the TCE group (SMD = 0.87, 95% CI 0.54 to 1.21, I²

= 0%, p < 0.01) when using a random-effects model (Figure 7).

Sleep quality was measured using the PSQI in the three included studies (32, 36, 37). The pooled results indicated that there was no significant difference in terms of an improvement in the PSQI between the TCE and control groups (SMD = 0.72, 95% CI –0.17 to 1.60, I² = 90.7%, p < 0.01) using a random-effects model (Figure 8).



Discussion

The health benefits of TCE are increasingly being accepted by citizens and being used to manage mental health problems in drug rehabilitees. This systematic review and meta-analysis aimed to assess the existing studies about TCE (Tai Chi, Qigong) and mental health (depression, anxiety, and drug craving) among drug rehabilitee. The findings showed that TCE might be effective in reducing depression, anxiety and drug cravings among drug rehabilitees.

In this current study, some significant heterogeneities were observed in outcomes of depression and anxiety among the included studies, respectively. A sensitivity analysis was performed to examine the heterogeneity, accordingly. Zhao (32) and Zhu (30) reported larger effect sizes in favor of TCE. However, significant positive results were found after excluding these two studies, showing that TCE had significant effects in terms of reducing depression and anxiety in drug rehabilitees.

Exercise has been assumed to have beneficial effects on health outcomes in adults at different ages. The accumulation of exercise produces a series of positive statuses, reducing the mental health disorders (e.g., depression, anxiety, stress) of practitioners. In our study, the meta-analytic results found that TCE could significantly reduce depression and anxiety symptoms in drug rehabilitees. The ESs for depression ($ES = 0.65$) and anxiety ($ES = 0.98$) were moderate and larger, respectively. This implies that TCE has an effect on promoting people's mental health, assisting drug rehabilitees to reduce depression and anxiety symptoms. Our findings were consistent with previous studies (21, 40), which also found that mind-body exercises (e.g., Tai Chi, Yoga) could effectively relieve depression and anxiety symptoms of substance abuse users. Furthermore, according to the subgroup analysis of the present study, drug rehabilitees showed significant decreases in depression and anxiety symptoms after practicing Tai Chi and Qigong exercises. These findings were inconsistent with a previous meta-analysis study (22), which reported no significant effects in favor of Tai Chi exercises. Compared to the number of included studies ($n = 3$) in the previous study, our study enhanced the statistical power by including a greater number of studies ($n = 8$). Moreover, the studies included in our systematic review were randomized controlled trials, providing a more reliable result. Additionally, for the other doses of exercise, drug rehabilitee showed a significant decrease in depression after practicing TCE for 30 to 80 min, 3 times or more per week, for 12 weeks. This TCE exercise prescription is consistent with the WHO guidelines, which recommend that adults should perform more than 30 min of exercise at least 3 times per week. However, future research is needed to explore whether long-term TCE (more than 12 weeks) has a positive effect on depression in comparison with non-significant effect observed in our review study.

No previous review study has explored the role of sex on TCE and depression. Our subgroup analysis result also did not show a significant difference in male and female adults, and drug rehabilitees of both sexes could reduce their depression symptom by practicing TCE. The reason for this result is still unknown. It is likely that TCE like other exercise provided comprehensive benefits to mental health. Moreover, the different movements (e.g., meditation, breathing, and slow movements) of TCE could help people focus on the sensation of breathing, biofeedback, and immersive exercise. Thereby, both male and female practitioners strengthened their ability to promote relaxation and decrease depression episodes (41). Therefore, TCE can reduce depression symptom in male and female drug rehabilitees.

With respect to drug craving, previous studies have revealed that exercise has benefits in terms of reducing drug cravings in drug rehabilitee (34, 38). These results are in line with our finding, showing a significant decline in drug cravings with a larger effect ($ES = 0.82$) in favor of TCE in drug rehabilitees. In fact, long-term drug rehabilitees have a particularly strong dependence on drugs, which may be due to the decrease in dopamine secretion from the brain. Drug users can only take drugs to improve the unhappiness caused by a lack of dopamine, thus increasing their drug cravings. Moreover, in terms of the remarkable finding of the present study, it is likely that TCE contributes to a decrease in drug cravings by acting on other mediating factors, such as improved cognitive function. The key point of motivation for drug rehabilitees may be cravings, but some cognitive functions, such as memory and impulse control, may assist drug users in resisting these addictive impulses or cravings (42). A previous study indicated that engagement in exercise might enhance practitioners' self-cognitive ability to suppress drug cravings (43). Therefore, we believe that drug rehabilitee can reduce drug cravings after practicing TCE.

In addition, drug rehabilitees have an increased risk of sleep disorders and escape this ailment through drug abuse (44, 45). However, few experimental studies have examined the role of TCE in sleep disorders among drug rehabilitees. In our study, three eligible studies were included in the current meta-analysis, and they showed that TCE did not have a benefit of improving sleep quality among drug rehabilitees. This finding is inconsistent with previous studies that investigated the effect of TCE on sleep in people with or without diseases (46, 47). The results suggest a significant improvement in sleep quality in favor of TCE. The reason why TCE is able to assist in relieving sleep disorders is that TCE requires gentle and rhythmic movements; when practitioners perform TCE, the parasympathetic tone can be increased to regulate the nerve center and improve sleep quality. Moreover, TCE can bring pleasure to the body and mind of the practitioner and thereby reduce sleep disorders (48). However, the reason for the lack of a significant effect of TCE found in our study is that it is likely that our study focused on drug rehabilitees and a small number

of studies were included compared with the population in the previous study. Thus, further research is needed to examine this finding.

There are several limitations that need to be acknowledged in this study. First, the participants included in the current study are mainly from China, where TCE is a popular exercise among people of different ages. This implies that more research needs to be completed that includes different ethnic groups in the future. Second, a limited number of studies were included and the studies were mainly conducted in China, which may cause a publication bias. Third, the heterogeneity across studies was relatively high due to the diversity of the study methodologies, such as different durations of intervention, different modalities of intervention, and different outcome measurements or test methods. Four, it is not known how long the TCE effect lasts after the intervention is discontinued, as the original study did not provide additional data to examine the results of the follow-up.

Conclusion

The present systematic review and meta-analysis provides evidence that suggests that there are beneficial effects of TCE (Tai Chi, Qigong) in terms of relieving depression, anxiety, and drug cravings in drug rehabilitees. Further studies are warranted to verify our results by implementing well-designed experimental protocols.

Data availability statement

The original contributions presented in the study are included in the article/supplementary material, further inquiries can be directed to the corresponding author/s.

References

- Liu J, Li J. Drug addiction: a curable mental disorder? *Acta Pharmacol Sin.* (2018) 39:1823–9. doi: 10.1038/s41401-018-0180-x
- Oppong AK. Cannabis and amphetamine use and its psychosocial correlates among school-going adolescents in Ghana. *Child Adolesc Psychiatry Ment Health.* (2019) 13:1–9. doi: 10.1186/s13034-019-0293-0
- Hall W. The future of the international drug control system and national drug prohibitions. *Addiction.* (2018) 113:1210–23. doi: 10.1111/add.13941
- National Institute on Drug Abuse. Understanding Drug Use and Addiction Drug Facts. (2016)1–5. Available at: <https://nida.nih.gov/publications/drugfacts/understanding-drug-use-addiction> (accessed May 3, 2022).
- Australian Institute of Health, Welfare. National Drug Strategy Household Survey 2019. Drug Statistics series no. 32. PHE 270. (2019)1–168. Available at: <https://www.aihw.gov.au/reports/illicit-use-of-drugs/national-drug-strategy-household-survey-2019/contents/data-visualisations/drug-use-and-population-groups> (accessed May 3, 2022).
- Sun HQ, Bao YP, Zhou SJ, Meng SQ, Lu L. The new pattern of drug abuse in China. *Curr Opin Psychiatry.* (2014) 27:251–5. doi: 10.1097/YCO.0000000000000073
- Babor TF, Caulkins JP, Edwards G, Fischer B, Foxcroft DR, Humphreys K, et al. Drug Policy and the Public Good. *Drug Policy Public Good.* (2010) 9780199557:1–352. doi: 10.1093/acprof:oso/9780199557127.001.0001
- Struzik M, Wilczyński KM, Chałubiński J, Mazgaj E, Krysta K. Comorbidity of substance use and mental disorders. *Psychiatr Danub.* (2017) 29:S623–8. doi: 10.2810/532790
- Kassebaum NJ, Arora M, Barber RM, Brown J, Carter A, Casey DC, et al. Global, regional, and national disability-adjusted life-years (DALYs) for 315 diseases and injuries and healthy life expectancy (HALE), 1990–2015: a systematic analysis for the Global Burden of Disease Study 2015. *Lancet.* (2016) 388:1603–58. doi: 10.1016/S0140-6736(16)31460-X
- Degenhardt L, Whiteford HA, Ferrari AJ, Baxter AJ, Charlson FJ, Hall WD, et al. Global burden of disease attributable to illicit drug use and dependence: Findings from the Global Burden of Disease Study 2010. *Lancet.* (2013) 382:1564–74. doi: 10.1016/S0140-6736(13)61530-5
- United Nations. *Report of the International Narcotics Control Board for 2013.* United Nations (2013). p. 1–6. doi: 10.18356/4dd21afa-en

Author contributions

YZ and SL: conceptualization and methodology. YZ: data curation and analysis and writing—original draft preparation. SL: writing—review and editing. All authors have read and agreed to the published version of the manuscript.

Funding

This study was supported by the Hunan Judicial Police Vocational College, and the Philosophy and Social Science Planning Project in Hunan Province (Grant Number: 19YBQ082).

Conflict of interest

The authors declare that the research was conducted in the absence of any commercial or financial relationships that could be construed as a potential conflict of interest.

Publisher's note

All claims expressed in this article are solely those of the authors and do not necessarily represent those of their affiliated organizations, or those of the publisher, the editors and the reviewers. Any product that may be evaluated in this article, or claim that may be made by its manufacturer, is not guaranteed or endorsed by the publisher.

12. Jacobsen JHW, Hutchinson MR, Mustafa S. Drug addiction: targeting dynamic neuroimmune receptor interactions as a potential therapeutic strategy. *Curr Opin Pharmacol.* (2016) 26:131–7. doi: 10.1016/j.coph.2015.10.010
13. Jhanjee S. Evidence based psychosocial interventions in substance use. *Indian J Psychol Med.* (2014) 36:112–8. doi: 10.4103/0253-7176.130960
14. Smith MA, Lynch WJ. Exercise as a potential treatment for drug abuse: evidence from preclinical studies. *Front Psychiatry.* (2012) 2:82. doi: 10.3389/fpsy.2011.00082
15. Furzer B, Rebar A, Dimmock JA, More A, Thornton AL, Wright K, et al. Exercise is medicine... when you enjoy it: Exercise enjoyment, relapse prevention efficacy, and health outcomes for youth within a drug and alcohol treatment service. *Psychol Sport Exerc.* (2021) 52:101800. doi: 10.1016/j.psychsport.2020.101800
16. Wang D, Wang Y, Wang Y, Li R, Zhou C. Impact of physical exercise on substance use disorders: A meta-analysis. *PLoS One.* (2014) 9:e110728. doi: 10.1371/journal.pone.0110728
17. Cheng L, Qian L, Chang S, He B. Effect of Tai Chi on depression symptoms and sleep quality among older adult women after exercise cessation. *Res Sport Med.* (2021) 29:395–405. doi: 10.1080/15438627.2020.1870976
18. Guo L, Kong Z, Zhang Y. Qigong-Based Therapy for Treating Adults with Major Depressive Disorder: A Meta-Analysis of Randomized Controlled Trials. *Int J Environ Res Public Health.* (2019) 16:826. doi: 10.3390/ijerph16050826
19. Li Z, Liu S, Wang L, Smith L. Mind-body exercise for anxiety and depression in copd patients: A systematic review and meta-analysis. *Int J Environ Res Public Health.* (2020) 17:22. doi: 10.3390/ijerph17010022
20. Yang GY, Sabag A, Hao WL, Zhang LN, Jia MX, Dai N, Zhang H, et al. Tai Chi for health and well-being: A bibliometric analysis of published clinical studies between 2010 and 2020. *Complement Ther Med.* (2021) 60:102748. doi: 10.1016/j.ctim.2021.102748
21. Zhang P, Li Z, Yang Q, Zhou J, Ma X. Effects of Taijiquan and Qigong exercises on depression and anxiety levels in patients with substance use disorders: A systematic review and meta-analysis. *Sport Med Heal Sci.* (2022) 4:85–94. doi: 10.1016/j.smhs.2021.12.004
22. Liu F, Cui J, Liu X, Chen KW, Chen X, Li R. The effect of tai chi and qigong exercise on depression and anxiety of individuals with substance use disorders: A systematic review and meta-analysis. *BMC Complement Med Ther.* (2020) 20:1–11. doi: 10.1186/s12906-020-02967-8
23. Page MJ, McKenzie JE, Bossuyt PM, Boutron I, Hoffmann TC, Mulrow CD, et al. The PRISMA 2020 statement: an updated guideline for reporting systematic reviews. *BMJ.* (2021) 372:n71. doi: 10.1136/bmj.n71
24. Maher C, Sherrington C, Herbert R, Moseley A, Elkins M. Reliability of the PEDro scale for rating quality of randomized controlled trials. *Phys Ther.* (2003) 83:713–721. doi: 10.1093/ptj/83.8.713
25. Higgins JPT, Li T, Deeks JJ. Choosing effect measures and computing estimates of effect. *Cochrane Handb Syst Rev Interv.* (2019) 143–176. doi: 10.1002/9781119536604.ch6
26. Zhang Y, Zou L, Chen S-T, Bae JH, Kim DY, Liu X, et al. Effects and Moderators of Exercise on Sarcopenic Components in Sarcopenic Elderly: A Systematic Review and Meta-Analysis. *Front Med.* (2021) 8:649748. doi: 10.3389/fmed.2021.649748
27. Higgins J.P.T., Green S. *Cochrane Handbook for Systematic Reviews of Interventions.* UK (2011). Available at: www.cochrane.org/training/cochrane-handbook (accessed June 12, 2018).
28. Zhang Y, Loprinzi PD, Yang L, Liu J, Liu S, Zou L. The beneficial effects of traditional chinese exercises for adults with low back pain: a meta-analysis of randomized controlled trials. *Medicina (B Aires).* (2019) 55:118. doi: 10.3390/medicina55050118
29. Geng J, Zhu D, Xu D. Effect of Tai Chi exercise on compulsory isolation detoxification in female. *Chinese J Sport Med.* (2016) 35:1048–51.
30. Zhu X. Effect of rehabilitation exercise on mental health promotion for patients in compulsory isolation. *Guangxi Univ Natl.* (2010) 1–37.
31. Zheng Q. Study on Tai Chi boxing training and the intervention of strong physique and drug craving. *Beijing Sport Univ.* (2019) 1–51.
32. Zhao C. Research on the effect of Taijiquan on sleep quality and mental health of heroin addicts. *Shanxi Univ.* (2020) 1–37.
33. Sui Y. An experimental study on the health promotion of compulsory isolated drug addicts by Baduanjin exercise. *Guangzhou Univ.* (2018) 1–45.
34. Wang Q. Research on the influence of Tai Chi on mental health and craving of methamphetamine addicts. *Shanghai Sport Univ.* (2021) 1–23.
35. Li DX, Zhuang XY, Zhang YP, Guo H, Wang Z, Zhang Q, et al. Effects of tai chi on the protracted abstinence syndrome: A time trial analysis. *Am J Chin Med.* (2013) 41:43–57. doi: 10.1142/S0192415X13500043
36. Zhu D, Dai G, Xu D, Xu X, Geng J, Zhu W, et al. Long-term effects of Tai Chi intervention on sleep and mental health of female individuals with dependence on amphetamine-type stimulants. *Front Psychol.* (2018) 9:1476. doi: 10.3389/fpsyg.2018.01476
37. Fu G, Huang S, Tang C, Liu Y, Gao Y, Cao J, et al. Effect of Wuqingxi on Emotion in Patients Abstaining from Drugs. *J Anhui Univ Chinese Med.* (2016) 35:26–9.
38. Zhang Z, Zhu D. Effect of taijiquan exercise on rehabilitation of male amphetamine-type addicts. *Evidence-based Complement Altern Med.* (2020) 2020:1–11. doi: 10.1155/2020/8886562
39. Wang D, Liu E, Lan X, Liu Y, Lu X. Reliability and validity test of Chinese version of amphetamine craving scale. *China Med Pharm.* (2016) 6:9–12.
40. Marefat M, Peymanzad H, Alikhajeh Y. The study of the effects of yoga exercises on addicts' depression and anxiety in rehabilitation period. *Procedia - Soc Behav Sci.* (2011) 30:1494–8. doi: 10.1016/j.sbspro.2011.10.289
41. Priddy SE, Howard MO, Hanley AW, Riquino MR, Friberg-Felsted K, Garland EL. Mindfulness meditation in the treatment of substance use disorders and preventing future relapse: neurocognitive mechanisms and clinical implications. *Subst Abuse Rehabil.* (2018) 9:103–14. doi: 10.2147/SAR.S145201
42. Garavan H, Hester R. The role of cognitive control in cocaine dependence. *Neuropsychol Rev.* (2007) 17:337–45. doi: 10.1007/s11065-007-9034-x
43. Hillman CH, Drobos DJ. Physical Activity and Cognitive Control: Implications for Drug Abuse. *Child Dev Perspect.* (2012) 6:367–73. doi: 10.1111/cdep.12000
44. Tang J, Liao Y, He H, Deng Q, Zhang G, Qi C, et al. Sleeping problems in Chinese illicit drug dependent subjects. *BMC Psychiatry.* (2015) 15:1–7. doi: 10.1186/s12888-015-0409-x
45. Mahoney JJ, De La Garza R, Jackson BJ, Verrico CD, Ho A, Iqbal T, et al. The relationship between sleep and drug use characteristics in participants with cocaine or methamphetamine use disorders. *Psychiatry Res.* (2014) 219:367–71. doi: 10.1016/j.psychres.2014.05.026
46. Chan AWK, Yu DSE, Choi KC, Lee DTF, Sit JWH, Chan HYL. Tai chi qigong as a means to improve night-time sleep quality among older adults with cognitive impairment: A pilot randomized controlled trial. *Clin Interv Aging.* (2016) 11:1277–86. doi: 10.2147/CIA.S111927
47. Lü J, Huang L, Wu X, Fu W, Liu Y. Effect of Tai Ji Quan training on self-reported sleep quality in elderly Chinese women with knee osteoarthritis: a randomized controlled trial. *Sleep Med.* (2017) 33:70–5. doi: 10.1016/j.sleep.2016.12.024
48. Zhu D, Jiang M, Xu D, Schöllhorn WI. Long-term effects of mind-body exercises on the physical fitness and quality of life of individuals with substance use disorder—a randomized trial. *Front Psychiatry.* (2020) 11:1506. doi: 10.3389/fpsy.2020.528373