



Evaluation of the Predictors for Unfavorable Clinical Outcomes of Degenerative Lumbar Spondylolisthesis After Lumbar Interbody Fusion Using Machine Learning

OPEN ACCESS

Edited by:

Thippa Reddy Gadekallu,
VIT University, India

Reviewed by:

Praveen Kumar,
VIT University, India
Yan-Hua Chen,
Wuhan University, China

*Correspondence:

Jie Li
lijie7107@163.com
Kang Tian
dmu-tiankang@outlook.com

†These authors have contributed
equally to this work and share first
authorship

Specialty section:

This article was submitted to
Digital Public Health,
a section of the journal
Frontiers in Public Health

Received: 15 December 2021

Accepted: 06 January 2022

Published: 03 March 2022

Citation:

Dong S, Zhu Y, Yang H, Tang N,
Huang G, Li J and Tian K (2022)
Evaluation of the Predictors for
Unfavorable Clinical Outcomes of
Degenerative Lumbar
Spondylolisthesis After Lumbar
Interbody Fusion Using Machine
Learning.
Front. Public Health 10:835938.
doi: 10.3389/fpubh.2022.835938

Shengtao Dong^{1,2†}, **Yinghui Zhu**^{1,3†}, **Hua Yang**^{4†}, **Ningyu Tang**¹, **Guangyi Huang**², **Jie Li**^{1*}
and **Kang Tian**^{1*}

¹ Department of Bone and Joint, First Affiliated Hospital, Dalian Medical University, Dalian, China, ² Department of Spine Surgery, Second Affiliated Hospital of Dalian Medical University, Dalian, China, ³ Department of Orthopedics, Dalian No. 3 People's Hospital, Dalian, China, ⁴ Department of Otolaryngology, Head and Neck Surgery, Second Affiliated Hospital of Dalian Medical University, Dalian, China

Background: An increasing number of geriatric patients are suffering from degenerative lumbar spondylolisthesis (DLS) and need a lumbar interbody fusion (LIF) operation to alleviate the symptoms. Our study was performed aiming to determine the predictors that contributed to unfavorable clinical efficacy among patients with DLS after LIF according to the support vector machine (SVM) algorithm.

Methods: A total of 157 patients with single-segment DLS were recruited and performed LIF in our hospital from January 1, 2015 to October 1, 2020. Postoperative functional evaluation, including ODI and VAS were performed, and endpoint events were defined as significant relief of symptom in the short term (2 weeks postoperatively) and long term (1 year postoperatively). General patient information and radiological data were selected and analyzed for statistical relationships with the endpoint events. The SVM method was used to establish the predictive model.

Results: Among the 157 consecutive patients, a postoperative unfavorable clinical outcome was reported in 26 patients (16.6%) for a short-term cohort and nine patients (5.7%) for a long-term cohort. Based on univariate and multivariate regression analysis, increased disc height (DH), enlarged facet angle (FA), and raised lateral listhesis (LLS) grade were confirmed as the risk factors that hindered patients' short-term functional recovery. Furthermore, long-term functional recovery was significantly associated with DH alone. In combination with the SVM method, a prediction model with consistent and superior predictive performance was achieved with average and maximum areas under the receiver operating characteristic curve (AUC) of 0.88 and 0.96 in the short-term

cohort, and 0.78 and 0.82 in the long-term cohort. The classification results of the discriminant analysis were demonstrated by the confusion matrix.

Conclusions: The proposed SVM model indicated that DH, FA, and LLS were statistically associated with a clinical outcome of DLS. These results may provide optimized clinical strategy for treatment of DLS.

Keywords: degenerative lumbar spondylolisthesis, clinical outcome, machine learning, predictor, lumbar interbody fusion

INTRODUCTION

As the aging society comes, degenerative lumbar spondylolisthesis (DLS) with symptomatic stenosis presents a serious challenge to healthcare (1, 2). After struggling with the dilemma of decompress treatment, spine surgeons have recognized that it will cause inferior postoperative outcomes without fusion, including persistent pain, pseudarthrosis, and progressive degenerative changes (3–5). Therefore, lumbar interbody fusion (LIF), in combination with decompression, has become the main surgical options for the treatment of DLS.

We noted that the negative feedback from the patients is the main reason for the increased reoperation rate and decreased treatment satisfaction, which result in contradictions or bothers between doctors and patients and heavy substantial burden on the healthcare systems (6).

The current dominant functional scales for evaluating symptoms of degenerative spinal diseases are the Visual Analog Scale (VAS) and the Oswestry Disability Index (ODI) (1, 7–9). However, there are few studies on surgical efficacy evaluation based on patient-reported outcomes (PROs) at present (7).

Machine learning (ML) has proved to be an effective data-driven automatic modeling mechanism in processing numerous problems in the biomedical field (10–13). Support vector machine (SVM) is a well-established classifier, which was applied for accurately patients' classification and treatment options improvement (14).

Considering there is a lack of superior predictive models, the purpose of this study was to investigate the clinical distribution of PROs and to establish a predictive model to evaluate the risk of unfavorable clinical outcomes in short- and long-term postoperative cohorts using the SVM algorithm.

METHODS

Study Design and Participants

The diagnosis of DLS required a minimum 3-mm vertebral displacement observed in lateral X-rays, and patients were

Abbreviations: DLS, Degenerative lumbar spondylolisthesis; LIF, Lumbar interbody fusion; SVM, Support vector machine; ASA, American Society of Anesthesiologists; BMI, Body mass index; LLS, Lateral listhesis; ODI, Oswestry Disability Index; VAS, Visual Analog Scale; PROs; Patient-reported outcomes; CT, Computed tomography; DEXR, Dual-energy X-ray; MRI, Magnetic resonance imaging; SD; Slip degree; LL, Lumbar lordosis; SL, Segment lordosis; SS, Sacral slope; PI, Pelvic incidence; PT, Pelvic tilt; DH, Disc height; FA, Facet angle; TLIF, Transforaminal lumbar interbody fusion; PLIF, Posterior lumbar interbody fusion; PMMA, Polymethylmethacrylate.

selected from January 1, 2015 to October 1, 2020 at our institution. Inclusion criteria: (1) age ranged from 50 to 80 years old, (2) patients diagnosed with symptomatic DLS, (3) single-level spondylolisthesis and LIF, (4) traceability of clinical parameters, radiological variables, and surgical records, (5) at least 1 year of follow-up available. Exclusion criteria: (1) American Society of Anesthesiologists (ASA) rating of III or higher, (2) multi-level decompression and LIF with pedicle screws, (3) previous lumbar surgical intervention, (4) revision surgery, (5) spinal tumor, deformity, fracture, infection or other spine diseases, and (6) rejection of implants.

The Ethics Committee of our hospital approved this study. All data were extracted from hospital electronic system.

Data Collection

General patient information was recorded, including age, sex, body mass index (BMI), smoking, diabetes, Oswestry Disability Index (ODI), Visual Analog Scale (VAS), fusion technique, operation level, bone graft methods, cement augmentation, and surgical complications.

All patients received a complete imaging evaluation, including standard anteroposterior and lateral X-rays, CT, dual-energy X-ray (DEXR), and MRI. Based on X-rays results, we recorded and analyzed the following radiological variables: sacral slope (SS), the angle between the sacral plate and the horizontal axis. Draw the line connecting the midpoint of the femoral head to the midpoint of the sacral plate, which formed an angle with the vertical line of the sacral plate as pelvic incidence (PI) and an angle with the longitudinal axis as pelvic tilt (PT) (**Figure 1A**). Slip degree (SD), the horizontal distance of posterior wall between the slipped and upper vertebrae; lumbar lordosis (LL), the angle between the upper endplate of L1 and the upper endplate of S1; segment lordosis (SL), the angle between the upper endplate of the upper vertebrae and the upper endplate of the lower vertebrae of the slipped segment; disc height (DH), the average of anterior disc height and a posterior disc height (**Figure 1B**); lateral listhesis (LLS) was defined the distance between vertebral bodies (**Figure 1C**). Insertion depth, as 60% of the vertebral depth, was treated as the minimum screw purchase at our institution; the patients were assigned to the S group and the L group (**Figure 2**). The facet angle (FA) between the facet line and the line connecting the bilateral dorsal points was measured on CT (**Figure 3**). Osteoporosis was defined as T-score < -2.5 SD on dual-energy X-ray absorptiometry.

PROs were determined as function evaluations. ODI was used to describe the patient's quality of life; a smaller value

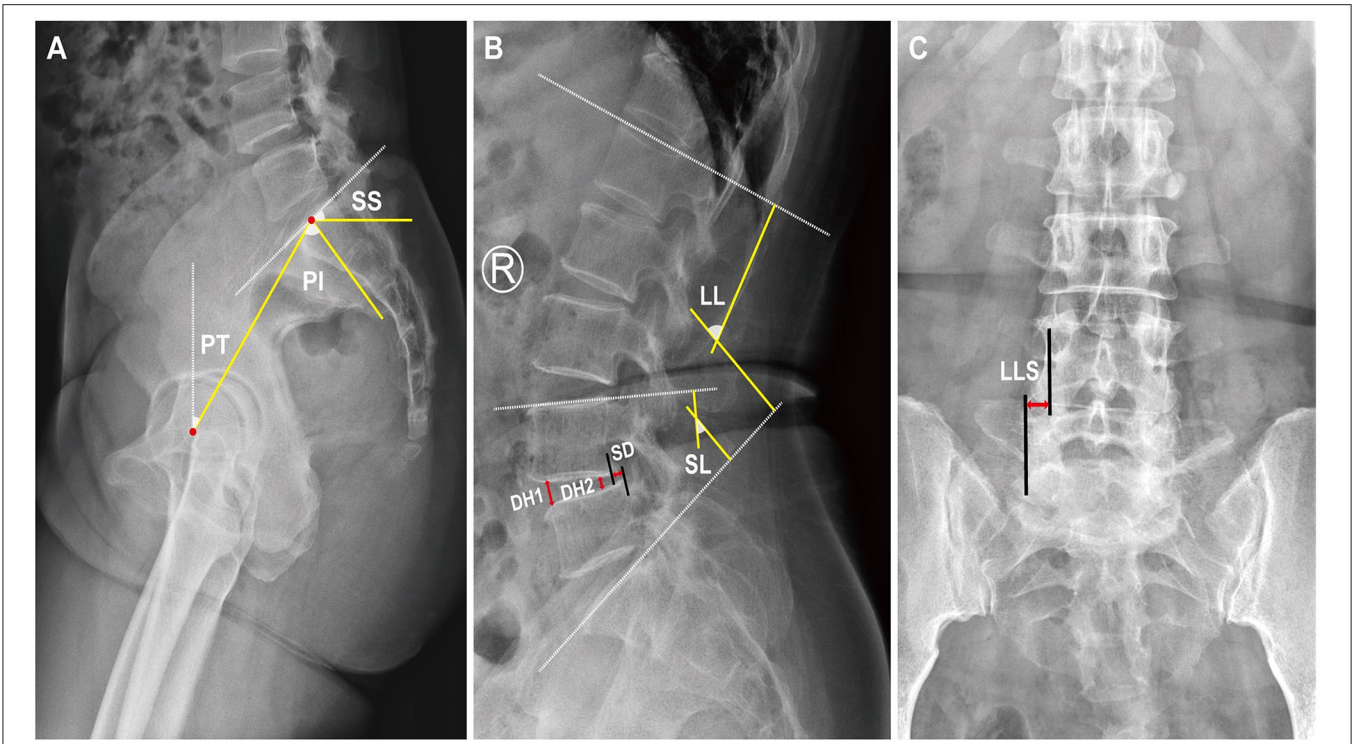


FIGURE 1 | A schematic diagram of spinopelvic parameters, lumbar parameters, and lateral listhesis (LLS). Spinopelvic parameters **(A)** included pelvic incidence (PI), pelvic tilt (PT), and sacral slope (SS). Lumbar parameters **(B)** included lumbar lordosis (LL), segment lordosis (SL), slip degree (SD), and disc height (DH). Lateral listhesis (LLS) was measured according to **(C)**.

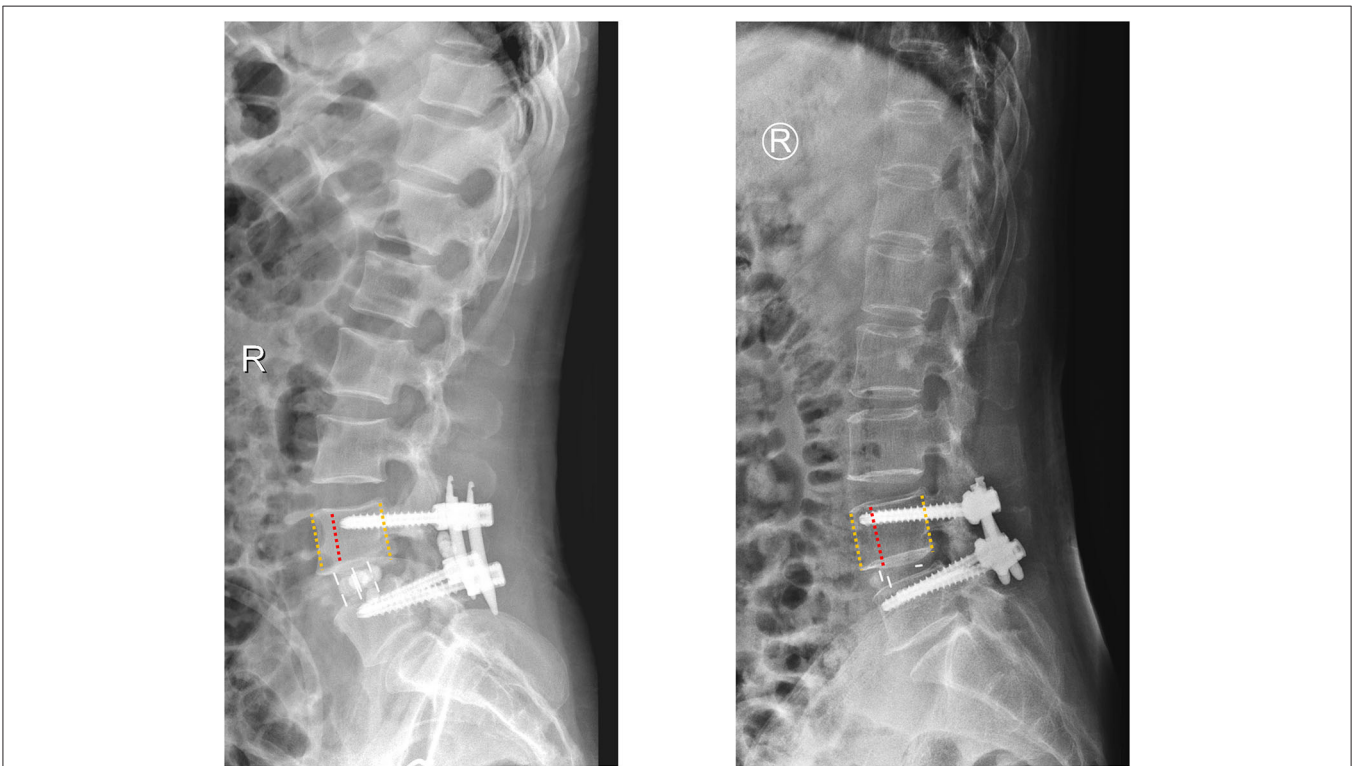


FIGURE 2 | A schematic diagram of insertion depth; the patients were assigned to the S group (the screws accounted for 60–80% of the anteroposterior diameter of vertebral body) and the L group (the screws accounted for more than 80% of the anteroposterior diameter of vertebral body).

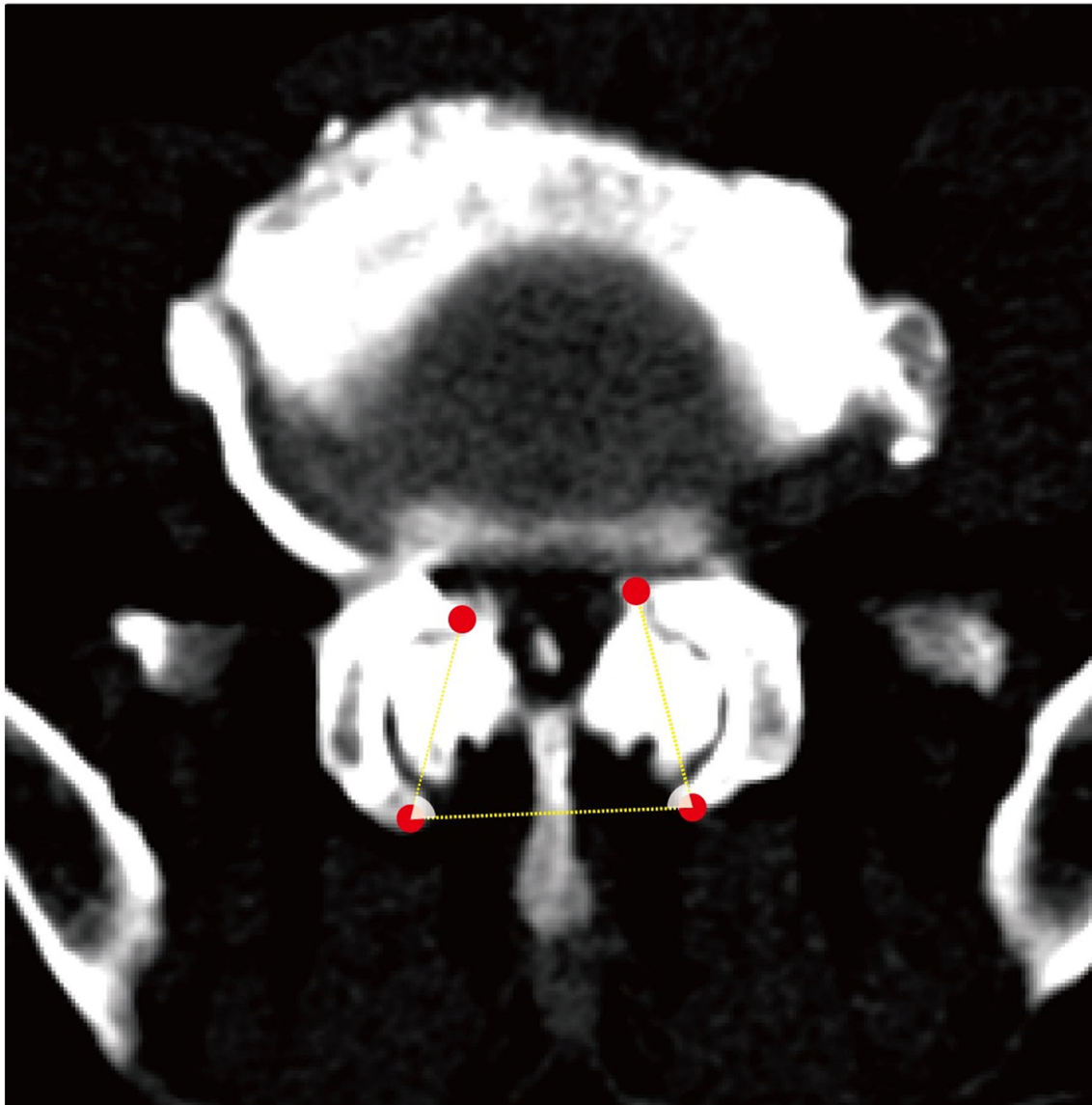


FIGURE 3 | A schematic diagram of the facet angle. A facet line was drawn between the 2 end points of each facet. The angle was measured between the facet line and the line connecting the bilateral dorsal points and recorded the average value.

suggested better function. VAS was chosen to measure the patient's back pain; a decreased value suggested reduced pain. Based on practical experience and literature review, significant symptomatic improvement was observed in patients with lumbar spondylolisthesis after decompression and fusion. (7) We defined the short-term endpoint event as a 60% improvement in VAS and ODI 2 weeks postoperatively, and long-term endpoint event as a 90% improvement in VAS and ODI 1 year postoperatively.

Surgical Technique

All recruited patients were operated by the same surgeon. Prone position after general anesthesia has taken effect. The transforaminal lumbar interbody fusion (TLIF) group and posterior lumbar interbody fusion (PLIF) group designed

their individual landmarks separately with the assistance of C-arm fluoroscopy. The TLIF group used a percutaneous fixation approach to implant screws *via* the pedicle, and PLIF used a conventional open approach. If the primary surgeon felt it necessary (preoperative diagnosis of osteoporosis or intraoperative finding of bone weakness), the tip of the vertebroplasty needle was inserted into the central point of the vertebral body under fluoroscopic guidance, and, approximately, 2–3 ml of polymethylmethacrylate (PMMA) bone cement was injected. The corresponding lamina is removed and retained for bone grafting, and the upper and lower cartilage endplates of the intervertebral disc are scraped with a ring curette after debridement of the annulus fibrosus and nucleus pulposus. The rods are inserted bilaterally, and traction is applied to

lift the slipped segment and ensure uniformity with the upper and lower vertebrae as much as possible. Some patients might receive cement augmentation due to screw retraction at this stage. After fluoroscopic demonstration of satisfactory correction of the slippage, an appropriately sized cage is filled with allograft and/or autologous bone, and the processed interbody fusion cage is inserted into the interbody space to support the vertebral body (Figure 4).

Support Vector Machine

VAPNIK first conceived the SVM technique as a classification method for both linear and non-linear data two decades ago. The input vectors were mapped to a high-dimensional feature space *via* preselected non-linear mappings, and the optimal classification hyperplane was constructed in this space. The support variables eventually obtained are exactly the nearest sample points. The data input format was recorded as “csv” or “xls” and analyzed depending on the Python programming language (Python 3.8.0, Python Software Foundation).

Statistical Analysis

For continuous variables, normal distribution was subject to Student’s *T*-tests, and non-normal distribution was subject to Mann–Whitney test. Chi-square test was adopted to analyze categorical variables. Continuous variables and categorical variables are presented as means \pm standard deviations (SD) and relative frequencies and percentages, respectively. In addition, we applied logistic regression analysis to identify the predictors of unfavorable clinical outcomes within 2 weeks postoperatively. The statistically significant variables obtained from the univariate regression analysis were again subjected to multivariate regression analysis. Furthermore, the selected variables were put into the SVM classifier. Statistical differences

were defined as $p < 0.05$. All statistical analysis was performed with SPSS version 22.0 (IBM SPSS, Armonk, New York).

RESULTS

From January 2015 to October 2020, a total of 157 consecutive patients met the inclusion criteria after excluding three patients due to follow-up loss. The demonstrative information of the patients was observed in Table 1. The mean age of the patients was 63.84, and the majority was females (approximately two times of males). Based on the selection basis of degenerative disease, 43 patients (27.39%) were diagnosed with osteoporosis, and 52 patients (33.12%) received intraoperative cemented augmentation. All the patients underwent single-segment fusion, with the primary level of fusion at L4/5 and TLIF as the dominant fusion approach. Autograft bone was the preferred bone graft method. Two patients had intraoperative screw retraction, and subsequent short-term poor functional recovery was observed during follow-up. The fusion rate was 95.54%, and, among the seven patients who achieved inadequate fusion, three exhibited consistent low back pain and one underwent revision surgery as the result. According to the PROs, 26 patients and nine patients were eventually assigned to the short- and long-term unfavorable cohorts; the score summary is shown in Table 2. Serious complications, such as neurological deficits, deep vein thrombosis, and wound infection, did not occur in this series of patients. However, we identified two patients with postoperative urinary retention and one patient who underwent revision surgery for persistent low back pain.

Table 3 compared the preoperative and postoperative radiological parameters. There were no statistically significant differences both in the short- and long-term cohorts, including

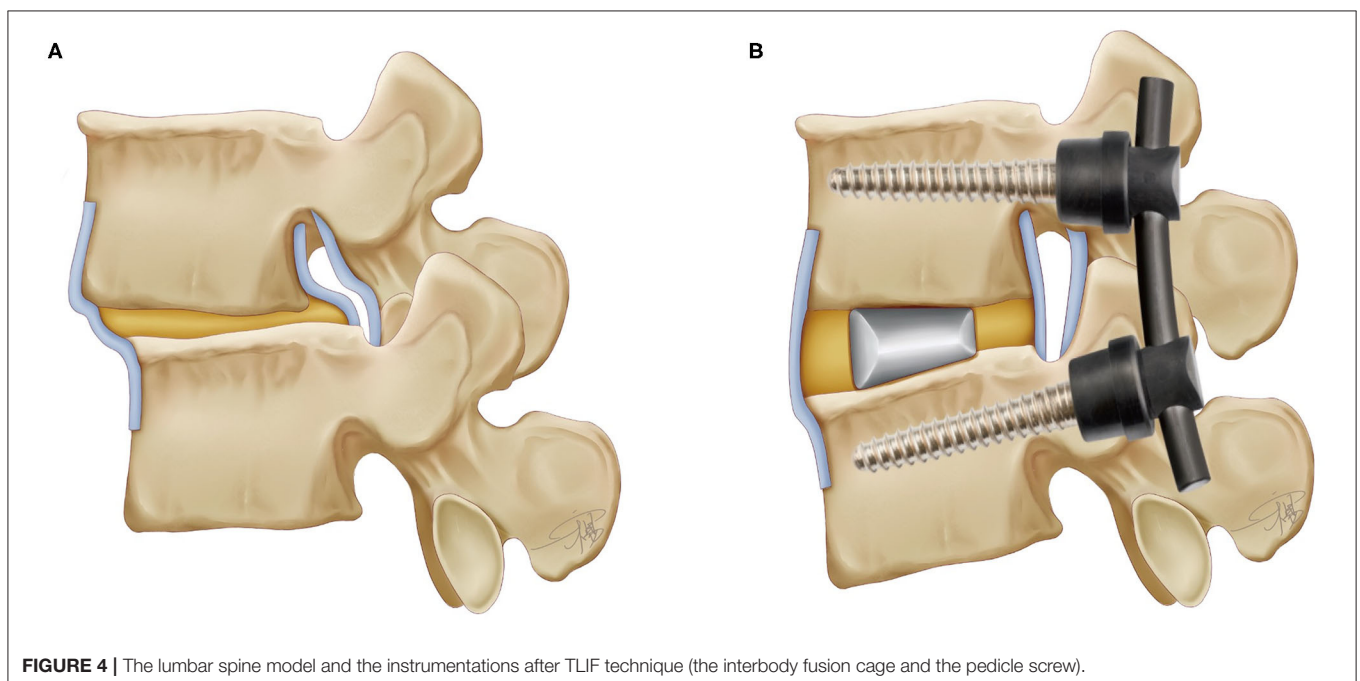


FIGURE 4 | The lumbar spine model and the instrumentations after TLIF technique (the interbody fusion cage and the pedicle screw).

TABLE 1 | Demonstrative information of the patient cohort.

Variables	Patients (N = 157)
Age (years), mean ± SD	63.84 ± 8.23
Sex (male/female), n (%)	52 (33.12%)/ 105 (66.88%)
BMI (kg/m ²), mean ± SD	24.39 ± 2.32
Smoking, n (%)	23 (14.65%)
Diabetes mellitus, n (%)	26 (16.56%)
Osteoporosis, n (%)	43 (27.39%)
Fusion level, n (%)	
L3/4	18 (11.46%)
L4/5	75 (47.77%)
L5/S1	64 (40.77%)
Fusion approach, n (%)	
TLIF	82 (52.23%)
PLIF	52 (33.12%)
TLIF + PLIF	23 (14.65%)
Types of bone graft	
Autograft bone	78 (49.68%)
Allograft bone	41 (26.12%)
Autograft + allograft bones	38 (24.20%)
Cement augmentation, n (%)	52 (33.12%)
Screw retraction, n (%)	2 (1.27%)
Fusion rate (fused/unfused), n (%)	150 (95.54%)/ 7 (4.46%)
Short-term unfavorable cohort, n (%)	26 (16.56%)
Long-term unfavorable cohort, n (%)	9 (5.73%)

TABLE 2 | Description of changes in DOI and VAS scores.

Oswestry disability index and the visual analog scale	Pre-operation	Two weeks after operation (F/UF)	One year after operation (F/UF)
ODI score	63.93 ± 10.35	28.95 ± 10.01 (26.89/ 39.35)	8.17 ± 3.20 (7.89 /12.78)
VAS score	6.96 ± 1.20	2.78 ± 1.26 (2.49/ 4.23)	0.69 ± 0.67 (0.64 /1.44)

F, favorable clinical outcomes; UF, unfavorable clinical outcomes.

SD, LL, and PI. In the present study, we found that DH, LLS, PT, and FA were significantly higher in the long-term unfavorable cohort than in the counterpart, and a higher proportion in the short screw group. In evaluating the long-term clinical efficacy, the differences of DH, LLS, and FA in the unfavorable group were statistically significant.

Univariate and multivariate regression analyses indicated that preoperative LLS ($p = 0.005$), postoperative DH ($p = 0.004$), and FA ($p = 0.030$) were independent risk factors in a short-term adverse outcome (Table 4), while only postoperative DH ($p = 0.038$) was independently associated with a long-term outcome (Table 5).

To predict the risk of an adverse outcome in patients with spondylolisthesis, we developed SVM models based on the above-mentioned independent predictors. We evaluated the ROC curve of the model and calculated the area under the ROC

curve. Furthermore, 10-fold cross-validation was performed to evaluate the predictive power of the algorithm. For patients who fed back adverse PROs in the short term, the SVM model showed satisfactory classification performance with mean and maximum AUC values of 0.88 and 0.96, respectively (Figure 5). Among all routine indicators, the only predictor of a long-term outcome (1 year) was postoperative DH, and the long-term SVM model showed slight weakening of performance compared to the short-term SVM, with mean and maximum AUC values of 0.78 and 0.82, respectively (Figure 6). Based on the confusion matrix, these indices provide evidence for performance evaluation, and the following equations are presented:

$$Accuracy (ACC) = \frac{TP + TN}{TP + TN + FP + FN}$$

$$Precision = \frac{TP}{TP + FP}$$

The confusion matrix showed the models were excellent at predicting the risk of unfavorable clinical outcomes in patients with spondylolisthesis with the ACC of 93.7% and precision of 88.5% in the short-term cohort and the ACC of 86.7% and precision of 66.7% in the long-term cohort.

DISCUSSION

No consensus has been achieved on whether to perform interbody fusion for degenerative lumbar spondylolisthesis. Chan et al. (15) concluded that their evidence that supported decompression alone was a more beneficial intervention to minimize surgery-related trauma and postoperative morbidity, and had comparable efficacy to additional interbody fusion, especially for low-grade spondylolisthesis. Ghogawala et al. controverted this conclusion (5). After 4-year follow-up, they found decompression with lumbar fusion was associated with a significant improvement in physical health-related quality of life compared to laminectomy alone. The abnormal sagittal alignment of the lumbar spine can lead to increased energy demands in non-resting positions, resulting in early fatigue and exercise intolerance (9). Therefore, the aim of DLS surgery is to restore the normal anatomical sequence and stability of the lumbar spine based on the removal of spinal stenosis (7). In the present study, all the patients underwent decompressive laminectomy and instrumented lumbar spinal fusion to achieve the above-mentioned treatment goals. PROs were direct and convenient evidence to measure the quality of DLS surgeries. Meanwhile, the VAS and ODI scores were regarded as the primary evaluation tools; these subjective data offered “real world” insights into guiding and improving surgical techniques (15, 16). Moreover, a series of reported model evaluation metrics indicate that the deep learning can provide satisfactory performance in distinguishing target patients, demonstrating good clinical application (17, 18). A broad application prospect requires additional data science techniques to support, including supervised dimensionality reduction for big data (19), deep learning networks for diabetic retinopathy (20), and identification of malnourished patients (21). Using

TABLE 3 | Comparison of the radiologic variables.

Variable	Total (n = 157)	Short-term cohort			Long-term cohort		
		Favorable group (n = 131)	Unfavorable group (n = 26)	p	Favorable group (n = 148)	Unfavorable group (n = 9)	p
DH (mm)							
Preop	8.60 ± 2.80	8.40 ± 2.80	9.60 ± 2.63	0.045	8.57 ± 2.81	9.00 ± 2.71	0.659
Postop	5.70 ± 1.84	5.22 ± 1.43	8.11 ± 1.75	<0.001	5.57 ± 1.79	7.84 ± 1.14	<0.001
LLS (mm)							
Preop	7.67 ± 3.09	6.83 ± 2.01	11.89 ± 4.02	<0.001	7.43 ± 2.91	11.56 ± 3.50	<0.001
Postop	1.98 ± 0.73	1.93 ± 0.63	2.24 ± 1.09	0.172	1.95 ± 0.70	2.53 ± 0.84	0.021
SD (mm)							
Preop	17.76 ± 2.85	17.72 ± 2.86	17.94 ± 2.74	0.733	17.77 ± 2.87	17.51 ± 2.37	0.789
Postop	6.86 ± 1.70	6.83 ± 1.72	7.00 ± 1.61	0.629	6.82 ± 1.68	7.40 ± 1.89	0.326
LL (°)							
Preop	38.87 ± 2.25	38.83 ± 2.26	39.10 ± 2.17	0.581	38.92 ± 2.24	38.16 ± 2.27	0.327
Postop	45.26 ± 2.52	45.34 ± 2.51	44.89 ± 2.54	0.413	45.30 ± 2.53	44.62 ± 2.33	0.435
SL (°)							
Preop	16.40 ± 2.79	16.43 ± 2.87	16.24 ± 2.37	0.729	16.38 ± 2.82	16.66 ± 2.26	0.778
Postop	24.64 ± 1.65	24.77 ± 1.67	24.01 ± 1.38	0.020	24.67 ± 1.67	24.28 ± 1.13	0.501
SS (°)							
Preop	36.10 ± 2.30	36.20 ± 2.26	35.61 ± 2.42	0.234	36.10 ± 2.29	36.13 ± 2.37	0.973
Postop	37.81 ± 2.83	38.08 ± 2.78	36.48 ± 2.72	0.008	37.87 ± 2.81	36.83 ± 3.04	0.286
PI (°)							
Preop	54.14 ± 2.57	54.31 ± 2.54	53.30 ± 2.56	0.068	54.22 ± 2.58	52.78 ± 1.95	0.104
Postop	52.87 ± 2.39	52.94 ± 2.41	52.49 ± 2.27	0.377	52.91 ± 2.41	52.18 ± 1.94	0.377
PT (°)							
Preop	18.03 ± 2.76	17.97 ± 2.77	18.31 ± 2.69	0.572	18.03 ± 2.75	18.06 ± 3.04	0.977
Postop	15.17 ± 1.44	15.06 ± 1.43	15.78 ± 1.37	0.020	15.14 ± 1.43	15.76 ± 1.49	0.208
Facet angle (°)	57.71 ± 7.29	55.15 ± 6.07	64.59 ± 7.79	<0.001	56.29 ± 6.95	63.65 ± 9.01	0.003
Insertion depth (%)				0.010			0.627
S group	103 (65.61%)	80 (61.07%)	23 (88.46%)		96 (64.87%)	7 (77.78%)	
L group	54 (34.39%)	51 (38.93%)	3 (11.54%)		52 (35.13%)	2 (22.22%)	

Preop, preoperative; Postop, postoperative; DH, disc height; LLS, lateral listhesis; SD, slip degree; LL, lumbar lordosis; SL, segment lordosis; SS, sacral slope; PI, pelvic incidence; PT, pelvic tilt; S group, the screws account for 60–80% of the anteroposterior diameter of vertebral body; L group, the screws accounted for more than 80% of the anteroposterior diameter of vertebral body.

the SVM model, postoperative DH, FA, and preoperative LLS were eventually identified as risk factors in unfavorable clinical outcomes at short-term follow-up, whereas only postoperative DH predicted clinical efficacy at long-term follow-up.

A large number of studies have demonstrated the importance of maintaining DH for achieving vertebral stability either in decompression alone or decompression with interbody fusion (3, 9). Our study indicated that the patients that attained a <6-mm DH intraoperatively were more likely to derive a sustained benefit from the decompression with a fusion procedure than the patients reporting poor clinical outcomes. The mean DH was higher in the short-term adverse group (8.11 vs. 7.84), which could be acceptably explained by progressive degeneration at the operated segment. The definition of the pathological change is adjacent segment disease (ASD), which was the condition responsible for half of the reoperations (3, 22, 23). Although PROs suggested that ASD was an unavoidable healthcare concern, we still feel encouraged by a reoperation rate

of <1%. Sato et al. reported a reoperation rate of 2.2% in their 1-year follow-up (3), while this incidence reached a staggering 10% in the study by Deyo et al. (24). Furthermore, classifying patients with > 60% improvement in functional evaluation as the definitive efficacy group at 2 weeks postoperatively, we considered 6 mm as an effective threshold associated with clinical outcomes, which was consistent with previous studies (3, 25, 26). Considering the intervertebral space could serve to guide the selection of an interbody fusion cage, a careful fluoroscopic image review after restoring the slipped vertebra is necessary. Interestingly, Yen et al. reported the intradiscal vacuum phenomenon (IVP) occurring after interbody fusion was associated with increased disc height and vertebral instability (27). An intensive biomechanical analysis of this susceptible anatomy seems imperative.

The structure, locating on the posterolateral region of the vertebral body and connecting the adjacent vertebral arch, is the facet joint, which constitutes the classic triple-joint complex with

TABLE 4 | Univariate and multivariate logistic regression analysis of unfavorable clinical outcomes in the short-term cohort.

Variables	Univariable logistic regression analysis			Multivariable logistic regression analysis				
	OR	95% CI		p	OR	95% CI		p
		Lower	Upper			Lower	Upper	
Preop. DH	1.17	1.00	1.36	0.048	0.98	0.67	1.41	0.894
Preop. LLS	2.11	1.51	2.97	<0.001	2.01	1.23	3.28	0.005
Postop. DH	3.28	2.11	5.10	<0.001	2.81	1.40	5.65	0.004
Postop. LLS	1.78	1.00	3.15	0.050	0.87	0.24	3.25	0.855
Postop. SL	0.74	0.56	0.98	0.037	1.01	0.59	1.71	0.979
Postop. SS	0.81	0.69	0.95	0.011	0.72	0.47	1.10	0.133
Postop. PT	1.44	1.05	1.97	0.023	1.23	0.64	2.36	0.544
Insertion depth								
S group	Ref	Ref	Ref	Ref	Ref	Ref	Ref	Ref
L group	0.21	0.06	0.72	0.013	0.83	0.08	9.12	0.902
Facet angle	1.23	1.13	1.34	<0.001	1.20	1.02	1.41	0.030

OR, odds ratio; 95% CI, 95% confidence interval.

TABLE 5 | Univariate and multivariate logistic regression analysis of unfavorable clinical outcomes in the long-term cohort.

Variables	Univariable logistic regression analysis			Multivariable logistic regression analysis				
	OR	95% CI		p	OR	95% CI		p
		Lower	Upper			Lower	Upper	
Preop. DH	1.06	0.83	1.34	0.657	0.88	0.65	1.20	0.431
Preop. LLS	1.33	1.13	1.57	0.001	1.24	0.98	1.57	0.069
Postop. DH	1.77	1.25	2.50	0.001	1.60	1.02	2.49	0.038
Postop. LLS	2.80	1.13	6.98	0.027	1.43	0.55	3.69	0.465
Postop. SL	0.86	0.56	1.32	0.864	1.14	0.67	1.94	0.619
Postop. SS	0.88	0.68	1.12	0.289	0.91	0.67	1.24	0.566
Postop. PT	1.37	0.84	2.24	0.214	1.03	0.58	1.82	0.919
Insertion depth								
S group	Ref	Ref	Ref	Ref	Ref	Ref	Ref	Ref
L group	0.53	0.11	2.63	0.435	1.58	0.23	10.93	0.645
Facet angle	1.14	1.04	1.25	0.006	1.03	0.92	1.16	0.557

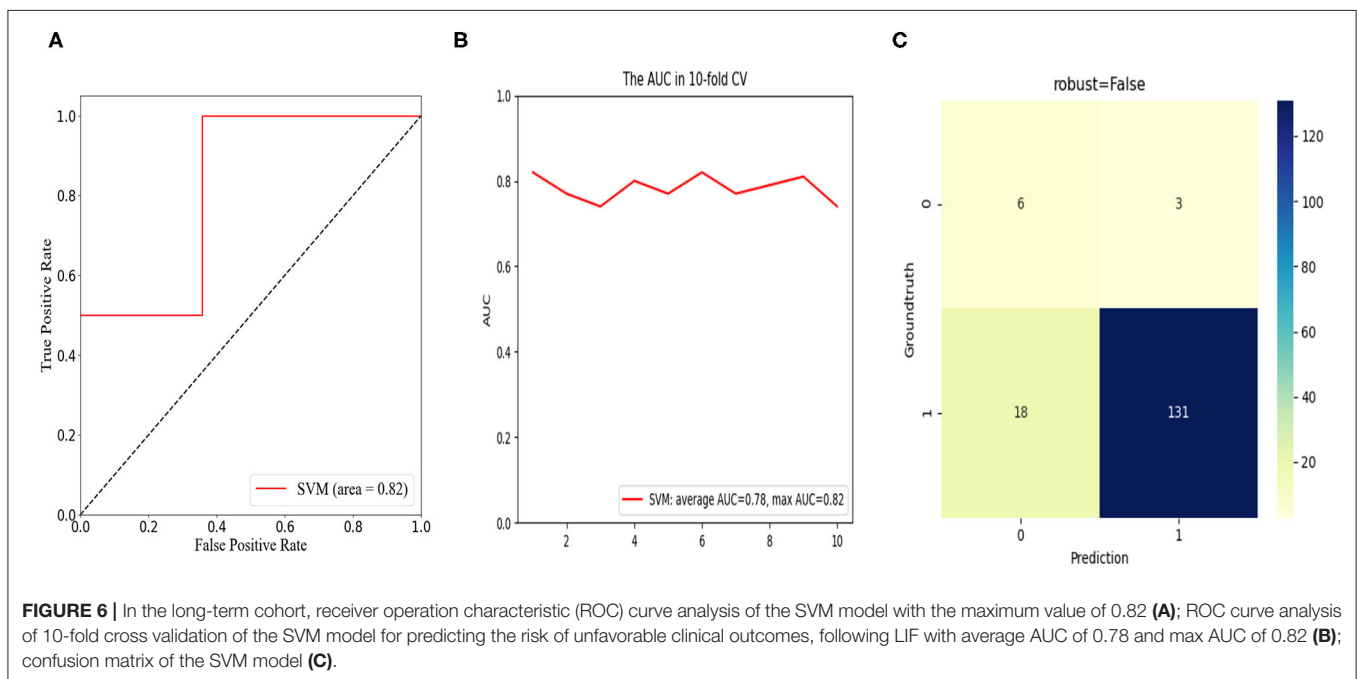
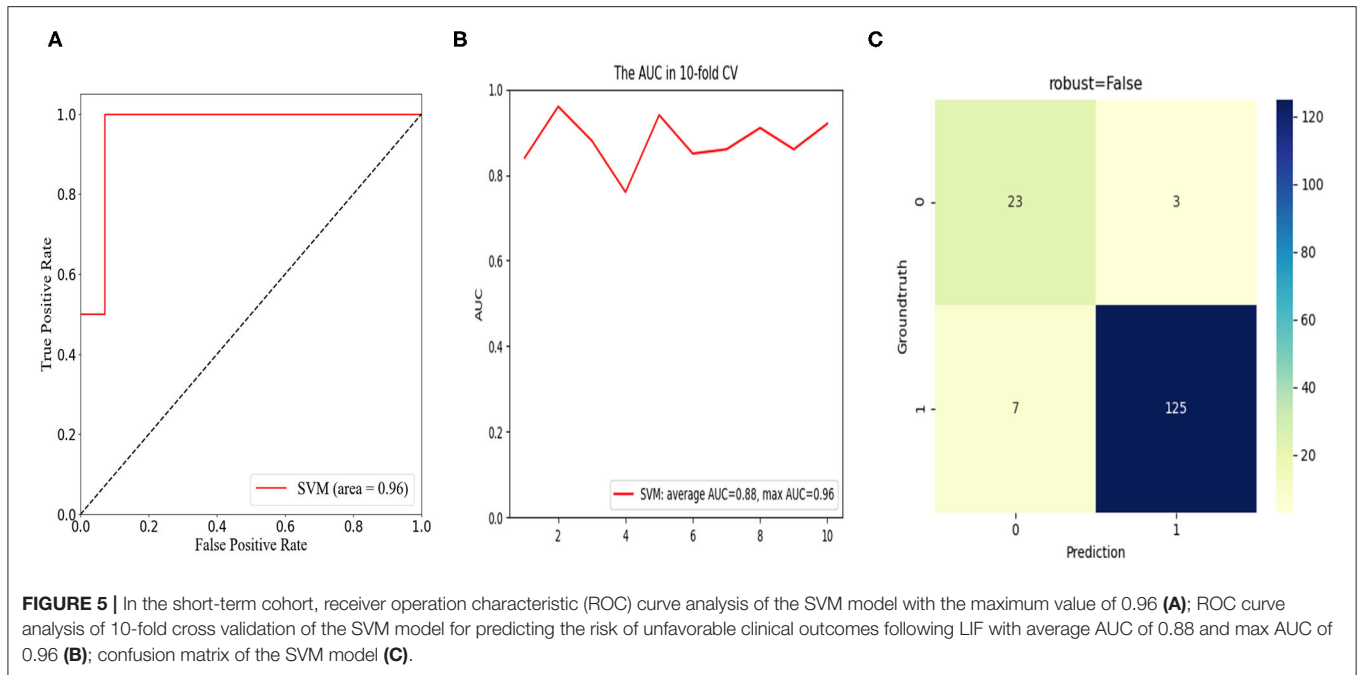
OR, odds ratio; 95% CI, 95% confidence interval.

the intervertebral disc (28). In the current study, outcomes in consecutive patients suggested that increased FA limits functional recovery in the short term without impacting on long-term outcomes. It was worth noting that 5–90% of chronic low back pain was triggered by facet joint pain (29). For symptomatic DLS, lumbar degenerative changes and facet joint misalignments are mutually anatomically predisposing factors (30). Thus, the facet joints, which bear approximately a quarter of the relevant axial load, play an important but neglected role in reflecting the PROs (29), and this was particularly evident in the case of short-term assessments. This variable conceals its function when focusing on and attempting to improve long-term PROs.

Assuming FA does not actually worsen surgical outcomes (31), a more convincing association was acknowledged. Due to the local fixation with pedicle screws, the altered facet joint stress accelerated disc degeneration, leading to an additional influence of disc height in predicting long-term outcomes (28). This explanation was also corroborated in this study. The finite element analysis from Park et al. externally verified the homogeneity between DH and FA (32). Moreover, in the current healthcare system, pain management has become an important part of surgical intervention, especially in the treatment of degenerative spinal diseases, and has shown promising results (28, 33–35). Nevertheless, for postoperative patients, pain is a generalized clinical symptom. It is necessary for the spine surgeons to cautiously analyze the etiology of the patient's adverse PROs to achieve precise management.

In general, successful surgery is largely dependent on acquiring a solid fusion and re-establishing normal local sagittal and coronal balance. The short-term postoperative outcome was correlated with preoperative LLS but independent of postoperative LLS. In other words, the difference between the two groups postoperatively was not statistically significant (1.93 vs. 2.24, $p = 0.172$), and measurement of preoperative coronal imbalance was more valuable. The role of sagittal lumbar alignment in assessing disease grade and deciding on individualized surgical strategies was well recognized in published articles (1–3, 7), but coronal malalignment was an equally important issue to be treated with caution (1, 36, 37). Although we identified the presence of LLS preoperatively and targeted the restoration of normal lumbar coronal balance by obtaining greater lumbar lordosis intraoperatively (38), the consideration was reflected in the comparison of postoperative data, but an inferior PRO was still observed. There were several conceivable reasons for the poor outcomes. First, asymmetric degenerative changes lead to disc collapse and laxity of the paravertebral ligaments, manifested by LLS of vertebral body and lateral displacement of the disc (1). This complicated deformity had more severe pathological changes than a mere sagittal imbalance. A limited surgical benefit was observed in DLS with LLS, including an elevated and persistent back pain due to the coronal displacement of the slipped segment (36). Second, purposeful surgical strategies and instruments were recommended to correct vertebral slippage in patients with lateral slippage, including preserving the lumbar lordosis, implanting a larger cage and laterally distracting the displaced vertebral body (1, 39). However, higher restoration requirements were frequently associated with increased risk of major complications, including extensive soft tissue injury and intraoperative blood loss, all of which can reduce short-term PROs (9). Therefore, alleviating the symptoms of DLS with LLS through a modified surgical approach remained a challenge that required an all-out effort to address.

Combining SVM machine learning technique to analyze predictors of short- and long-term adverse clinical outcomes from routinely available variables was the innovation of this study. Ten-fold cross-validation AUC and confusion matrix suggested that our model performed well. However, there were several limitations in our study. First, selection bias may exist



due to the inherent flaw of retrospective studies. Second, the analyzed data were from our single institution, resulting in a lack of adequate training of the SVM model. Therefore, future studies may require a multicenter prospective randomized controlled design to assist in externally validating the credibility of our conclusion. Finally, despite an attempt to analyze extensive patient information, spinal degeneration is a multidimensional and progressive disease that still left some data unaccounted for.

CONCLUSION

In conclusion, both TLIF and PLIF are practicable surgical strategies to improve symptoms in patients with DLS. Postoperative DH, FA, and preoperative LLS were statistically associated with the short-term clinical outcome, while only postoperative DH accurately predicted the long-term clinical outcome with an average follow-up time

of 1 year. The proposed SVM model showed superior predictive performance.

DATA AVAILABILITY STATEMENT

The raw data supporting the conclusions of this article will be made available by the authors, without undue reservation.

ETHICS STATEMENT

The study was approved by an Institutional Ethics Committee at the First Affiliated Hospital of Dalian Medical University. Considering that this work was a retrospective study, the Ethics Committee waived the requirement for informed consent from patients.

REFERENCES

- Pan W, Zhao JL, Xu J, Zhang M, Fang T, Yan J, et al. Lumbar alignment and patient-reported outcomes after single-level transforaminal lumbar interbody fusion for degenerative lumbar spondylolisthesis with and without local coronal imbalance. *J Neurosurg Spine*. (2020) 1–7. doi: 10.3171/2020.7.SPINE20703
- Zhong W, Liang X, Luo X, Huang T, Quan Z. Complications rate of and risk factors for the unplanned reoperation of degenerative lumbar spondylolisthesis in elderly patients: a retrospective single-Centre cohort study of 33 patients. *BMC Geriatr*. (2020) 20:301. doi: 10.1186/s12877-020-01717-2
- Sato S, Yagi M, Machida M, Yasuda A, Konomi T, Miyake A, et al. Reoperation rate and risk factors of elective spinal surgery for degenerative spondylolisthesis: minimum 5-year follow-up. *Spine J*. (2015) 15:1536–44. doi: 10.1016/j.spinee.2015.02.009
- Försth P, Ólafsson G, Carlsson T, Frost A, Borgström F, Fritzell P, et al. A randomized, controlled trial of fusion surgery for lumbar spinal stenosis. *N Engl J Med*. (2016) 374:1413–23. doi: 10.1056/NEJMoa1513721
- Ghogawala Z, Dziura J, Butler WE, Dai F, Terrin N, Magge SN, et al. Laminectomy plus fusion versus laminectomy alone for lumbar spondylolisthesis. *N Engl J Med*. (2016) 374:1424–34. doi: 10.1056/NEJMoa1508788
- Gerling MC, Leven D, Passias PG, Lafage V, Bianco K, Lee A, et al. Risk factors for reoperation in patients treated surgically for degenerative spondylolisthesis: a subanalysis of the 8-year data from the SPORT trial. *Spine*. (2017) 42:1559–69. doi: 10.1097/BRS.0000000000002196
- Xi X, Zeng Z, Li F, Wang C, Ma B, Xie N, et al. Caudal insertion of pedicle screws facilitates interbody distraction during spondylolisthetic vertebrae restoration: a retrospective study. *Pain Ther*. (2021) 10:1537–50. doi: 10.1007/s40122-021-00315-3
- Zhou Q, Zhang JX, Zheng YF, Teng Y, Yang HL, Liu H, et al. Effects of different pedicle screw insertion depths on sagittal balance of lumbar degenerative spondylolisthesis, a retrospective comparative study. *BMC Musculoskelet Disord*. (2021) 22:850. doi: 10.1186/s12891-021-04736-1
- Blumenthal C, Curran J, Benzel EC, Potter R, Magge SN, Harrington JF Jr, et al. Radiographic predictors of delayed instability following decompression without fusion for degenerative grade I lumbar spondylolisthesis. *J Neurosurg Spine*. (2013) 18:340–6. doi: 10.3171/2013.1.SPINE12537
- Wu EQ, Hu D, Deng PY, Tang Z, Cao Y, Zhang WM, et al. Nonparametric Bayesian prior inducing deep network for automatic detection of cognitive status. *IEEE Trans Cybern*. (2021) 51:5483–96. doi: 10.1109/TCYB.2020.2977267
- Krishnasamy L, Dhanaraj RK, Ganesh Gopal D, Reddy Gadekallu T, Aboudaif MK, Abouel Nasr E. A heuristic angular clustering framework for secured statistical data aggregation in sensor networks. *Sensors*. (2020) 20:4937. doi: 10.3390/s20174937

AUTHOR CONTRIBUTIONS

SD and YZ completed the study design. SD, YZ, HY, and NT performed the study and collected and analyzed the data. SD, YZ, and GH drafted the manuscript. JL and KT provided the expert consultations and suggestions and conceived the study, participated in its design and coordination, and helped to embellish language. All the authors reviewed the final version of the manuscript.

FUNDING

This work is supported by National Natural Science Foundation of China (No. 81601901) and Natural Science Foundation of Liaoning (No. 2019-MS-079 and No. 20170540285).

- Wu EQ, Zhou M, Hu D, Zhu L, Tang Z, Qiu XY, et al. Self-Paced dynamic infinite mixture model for fatigue evaluation of pilots' brains. *IEEE Trans Cybern*. (2020). doi: 10.1109/TCYB.2020.3033005
- Agrawal S, Sarkar S, Alazab M, Maddikunta PKR, Gadekallu TR, Pham QV. Genetic CFL: hyperparameter optimization in clustered federated learning. *Comput Intell Neurosci*. (2021) 2021:7156420. doi: 10.1155/2021/7156420
- Ghogawala Z, Dunbar MR, Essa I. Lumbar spondylolisthesis: modern registries and the development of artificial intelligence. *J Neurosurg Spine*. (2019) 30:729–35. doi: 10.3171/2019.2.SPINE18751
- Chan AK, Bisson EF, Bydon M, Glassman SD, Foley KT, Potts EA, et al. Laminectomy alone versus fusion for grade 1 lumbar spondylolisthesis in 426 patients from the prospective quality outcomes database. *J Neurosurg Spine*. (2018) 30:234–41. doi: 10.3171/2018.8.SPINE17913
- Bisson EF, Mummaneni PV, Virk MS, Knightly J, Alvi MA, Goyal A, et al. Open versus minimally invasive decompression for low-grade spondylolisthesis: analysis from the quality outcomes database. *J Neurosurg Spine*. (2020) 8:1–11. doi: 10.3171/2020.3.SPINE191239
- Bhattacharya S, Reddy Maddikunta PK, Pham QV, Gadekallu TR, Krishnan S SR, Chowdhary CL, et al. Deep learning and medical image processing for coronavirus (COVID-19) pandemic: a survey. *Sustain Cities Soc*. (2021) 65:102589. doi: 10.1016/j.scs.2020.102589
- Zahoor MI, Dou Z, Shah SBH, Khan IU, Ayub S, Reddy Gadekallu T. Pilot decontamination using asynchronous fractional pilot scheduling in massive MIMO systems. *Sensors*. (2020) 20:6213. doi: 10.3390/s20216213
- Vogelstein JT, Bridgeford EW, Tang M, Zheng D, Douville C, Burns R, et al. Supervised dimensionality reduction for big data. *Nat Commun*. (2021) 12. doi: 10.1038/s41467-021-23102-2
- Ayhan MS, Kühlewein L, Aliyeva G, Inhoffen W, Ziemssen F, Berens P, et al. Expert-validated estimation of diagnostic uncertainty for deep neural networks in diabetic retinopathy detection. *Med Image Anal*. (2020) 64:101724. doi: 10.1016/j.media.2020.101724
- Yin L, Lin X, Liu J, Li N, He X, Zhang M, et al. Classification tree-based machine learning to visualize and validate a decision tool for identifying malnutrition in cancer patients. *J Parenter Enteral Nutr*. (2021) 45:1736–48. doi: 10.1002/jpen.2070
- Duan PG, Mummaneni PV, Berven SH, Mayer R, Ruan HB, Chang CC, et al. Revision surgery for adjacent segment degeneration after fusion for lumbar spondylolisthesis: is there a correlation with roussouly type? *Spine*. (2020) 47:10–5. doi: 10.1097/BRS.0000000000003708
- Okuda S, Nagamoto Y, Takenaka S, Ikuta M, Matsumoto T, Takahashi Y, et al. Effect of segmental lordosis on early-onset adjacent-segment disease after posterior lumbar interbody fusion. *J Neurosurg Spine*. (2021) 35:454–9. doi: 10.3171/2020.12.SPINE201888
- Deyo RA, Martin BI, Kreuter W, Jarvik JG, Angier H, Mirza SK, et al. Revision surgery following operations for lumbar stenosis. *J Bone Joint Surg Am*. (2011) 93:1979–86. doi: 10.2106/JBJS.J.01292

25. Lombardi JS, Wiltse LL, Reynolds J, Widell EH, Spencer C 3rd. Treatment of degenerative spondylolisthesis. *Spine*. (1985) 10:821–7. doi: 10.1097/00007632-198511000-00008
26. Tian H, Wu A, Guo M, Zhang K, Chen C, Li X, et al. Adequate restoration of disc height and segmental lordosis by lumbar interbody fusion decreases adjacent segment degeneration. *World Neurosurg*. (2018) 118:856–64. doi: 10.1016/j.wneu.2018.07.075
27. Yen CP, Beckman JM, Vivas AC, Bach K, Uribe JS. Effects of intradiscal vacuum phenomenon on surgical outcome of lateral interbody fusion for degenerative lumbar disease. *J Neurosurg Spine*. (2017) 26:419–25. doi: 10.3171/2016.8.SPINE16421
28. Park JY, Kim DH, Seo DK, Yoon SH, Lee G, Lee S, et al. Predictors of response to a medial branch block: MRI analysis of the lumbar spine. *J Clin Med*. (2019) 8:538. doi: 10.3390/jcm8040538
29. Cohen SP, Raja SN. Pathogenesis, diagnosis, and treatment of lumbar zygapophysial (facet) joint pain. *Anesthesiology*. (2007) 106:591–614. doi: 10.1097/0000542-200703000-00024
30. Jentzsch T, Geiger J, Zimmermann SM, Slankamenac K, Nguyen-Kim TD, Werner CM. Lumbar facet joint arthritis is associated with more coronal orientation of the facet joints at the upper lumbar spine. *Radiol Res Pract*. (2013) 2013:693971. doi: 10.1155/2013/693971
31. Kong MH, He W, Tsai YD, Chen NF, Keorochana G, Do DH, et al. Relationship of facet tropism with degeneration and stability of functional spinal unit. *Yonsei Med J*. (2009) 50:624–9. doi: 10.3349/ymj.2009.50.5.624
32. Park WM, Kim K, Kim YH. Effects of degenerated intervertebral discs on intersegmental rotations, intradiscal pressures, and facet joint forces of the whole lumbar spine. *Comput Biol Med*. (2013) 43:1234–40. doi: 10.1016/j.combiomed.2013.06.011
33. Zhao W, Wang Y, Wu J, Gao X, Wei Q, Lai X, et al. Long-term outcomes of epidurals with lidocaine with or without steroids for lumbar disc herniation and spinal stenosis: a meta-analysis. *Pain Physician*. (2020) 23:365–74. doi: 10.36076/ppj.2020/23/365
34. Virk S, Sandhu M, Qureshi S, Albert T, Sandhu H. How does preoperative opioid use impact postoperative health-related quality of life scores for patients undergoing lumbar microdiscectomy? *Spine J*. (2020) 20:1196–202. doi: 10.1016/j.spinee.2020.05.094
35. Peck J, Urits I, Peoples S, Foster L, Malla A, Berger AA, et al. A comprehensive review of over the counter treatment for chronic low back pain. *Pain Ther*. (2021) 10:69–80. doi: 10.1007/s40122-020-00209-w
36. Takahashi T, Hanakita J, Watanabe M, Kawaoka T, Takebe N, Kitahara T. Lumbar alignment and clinical outcome after single level asymmetrical transforaminal lumbar interbody fusion for degenerative spondylolisthesis with local coronal imbalance. *Neurol Med Chir*. (2014) 54:691–7. doi: 10.2176/nmc.st.2013-0394
37. Kato M, Namikawa T, Matsumura A, Konishi S, Nakamura H. Radiographic risk factors of reoperation following minimally invasive decompression for lumbar canal stenosis associated with degenerative scoliosis and spondylolisthesis. *Global Spine J*. (2017) 7:498–505. doi: 10.1177/2192568217699192
38. Murata Y, Takahashi K, Hanaoka E, Utsumi T, Yamagata M, Moriya H. Changes in scoliotic curvature and lordotic angle during the early phase of degenerative lumbar scoliosis. *Spine*. (2002) 27:2268–73. doi: 10.1097/00007632-200210150-00016
39. Kepler CK, Rihn JA, Radcliff KE, Patel AA, Anderson DG, Vaccaro AR, et al. Restoration of lordosis and disk height after single-level transforaminal lumbar interbody fusion. *Orthop Surg*. (2012) 4:15–20. doi: 10.1111/j.1757-7861.2011.00165.x

Conflict of Interest: The authors declare that the research was conducted in the absence of any commercial or financial relationships that could be construed as a potential conflict of interest.

Publisher's Note: All claims expressed in this article are solely those of the authors and do not necessarily represent those of their affiliated organizations, or those of the publisher, the editors and the reviewers. Any product that may be evaluated in this article, or claim that may be made by its manufacturer, is not guaranteed or endorsed by the publisher.

Copyright © 2022 Dong, Zhu, Yang, Tang, Huang, Li and Tian. This is an open-access article distributed under the terms of the Creative Commons Attribution License (CC BY). The use, distribution or reproduction in other forums is permitted, provided the original author(s) and the copyright owner(s) are credited and that the original publication in this journal is cited, in accordance with accepted academic practice. No use, distribution or reproduction is permitted which does not comply with these terms.