



OPEN ACCESS

EDITED BY

Uffe Kock Wiil,
University of Southern
Denmark, Denmark

REVIEWED BY

Yang Xiong,
Sichuan University, China
Jing Qi,
Third Xiangya Hospital, Central South
University, China

*CORRESPONDENCE

Ziru Liu
✉ liuziru@csu.edu.cn

†These authors have contributed
equally to this work and share first
authorship

SPECIALTY SECTION

This article was submitted to
Aging and Public Health,
a section of the journal
Frontiers in Public Health

RECEIVED 01 November 2022

ACCEPTED 19 December 2022

PUBLISHED 12 January 2023

CITATION

Huang J, Jin W, Duan X, Liu X, Shu T,
Fu L, Deng J, Chen H, Liu G, Jiang Y
and Liu Z (2023) Twenty-eight-day
in-hospital mortality prediction for
elderly patients with ischemic stroke in
the intensive care unit: Interpretable
machine learning models.
Front. Public Health 10:1086339.
doi: 10.3389/fpubh.2022.1086339

COPYRIGHT

© 2023 Huang, Jin, Duan, Liu, Shu, Fu,
Deng, Chen, Liu, Jiang and Liu. This is
an open-access article distributed
under the terms of the [Creative
Commons Attribution License \(CC BY\)](#).
The use, distribution or reproduction
in other forums is permitted, provided
the original author(s) and the copyright
owner(s) are credited and that the
original publication in this journal is
cited, in accordance with accepted
academic practice. No use, distribution
or reproduction is permitted which
does not comply with these terms.

Twenty-eight-day in-hospital mortality prediction for elderly patients with ischemic stroke in the intensive care unit: Interpretable machine learning models

Jian Huang^{1,2†}, Wanlin Jin^{3†}, Xiangjie Duan^{4†}, Xiaozhu Liu^{5,6}, Tingting Shu⁷, Li Fu⁸, Jiewen Deng⁹, Huaqiao Chen⁵, Guojing Liu¹⁰, Ying Jiang¹¹ and Ziru Liu^{1*}

¹Department of General Surgery, The Second Xiangya Hospital, Central South University, Changsha, China, ²Guangxi University of Chinese Medical, Nanning, China, ³Health Management Center, The Second Xiangya Hospital of Central South University, Changsha, China, ⁴Department of Infectious Diseases, The First People's Hospital of Changde City, Changde, China, ⁵Department of Cardiology, The Second Affiliated Hospital of Chongqing Medical University, Chongqing, China, ⁶Key Laboratory of Neurological Diseases, The Second Affiliated Hospital of Xuzhou Medical University, Xuzhou, China, ⁷Army Medical University (The Third Military Medical University), Chongqing, China, ⁸Key Laboratory of Novel Materials for Sensor of Zhejiang Province, College of Materials and Environmental Engineering, Hangzhou Dianzi University, Hangzhou, China, ⁹Department of Neurosurgery, Xiu Shan People's Hospital, Chongqing, China, ¹⁰Department of Neurosurgery, University-Town Hospital of Chongqing Medical University, Chongqing, China, ¹¹Department of Neurology, Southwest Hospital, Third Military Medical University (Army Medical University), Chongqing, China

Background: Risk stratification of elderly patients with ischemic stroke (IS) who are admitted to the intensive care unit (ICU) remains a challenging task. This study aims to establish and validate predictive models that are based on novel machine learning (ML) algorithms for 28-day in-hospital mortality in elderly patients with IS who were admitted to the ICU.

Methods: Data of elderly patients with IS were extracted from the electronic intensive care unit (eICU) Collaborative Research Database (eICU-CRD) records of those elderly patients admitted between 2014 and 2015. All selected participants were randomly divided into two sets: a training set and a validation set in the ratio of 8:2. ML algorithms, such as Naïve Bayes (NB), eXtreme Gradient Boosting (xgboost), and logistic regression (LR), were applied for model construction utilizing 10-fold cross-validation. The performance of models was measured by the area under the receiver operating characteristic curve (AUC) analysis and accuracy. The present study uses interpretable ML methods to provide insight into the model's prediction and outcome using the SHapley Additive exPlanations (SHAP) method.

Results: As regards the population demographics and clinical characteristics, the analysis in the present study included 1,236 elderly patients with IS in the ICU, of whom 164 (13.3%) died during hospitalization. As regards feature selection, a total of eight features were selected for model construction. In

the training set, both the xgboost and NB models showed specificity values of 0.989 and 0.767, respectively. In the internal validation set, the xgboost model identified patients who died with an AUC value of 0.733 better than the LR model which identified patients who died with an AUC value of 0.627 or the NB model 0.672.

Conclusion: The xgboost model shows the best predictive performance that predicts mortality in elderly patients with IS in the ICU. By making the ML model explainable, physicians would be able to understand better the reasoning behind the outcome.

KEYWORDS

ischemic stroke, elderly patients, machine learning, hospital mortality, prediction model

Introduction

Ischemic stroke (IS) approximately accounts for 80% of strokes in elderly patients, which has become the second most serious cause of death in the world (1). Patients may need intensive care unit (ICU) treatment due to stroke-associated cerebral damage, concomitantly compromising other vital organ functions. As treatment and support options expand, the need for intensive care and acute stroke care will increasingly intertwine, and the number of stroke patients admitted to the ICU will rise (2). Notably, short-term mortality rates for patients with stroke who require intensive care treatment were high, and the survival curve gradient stabilized over time. In ICU-admitted patients with stroke, the 30-day mortality rate was 31% for ischemic stroke (3). Consequently, it is imperative to determine the risk of early death in the course of treatment for patients with IS who were admitted to the ICU.

Some models have also been developed to predict in-hospital mortality in cases of acute ischemic stroke. Mittal and Goel (4) reported a predictive score by investigating 188 consecutive patients with IS, and their predictive factors included admission, hypoxia (saturation of oxygen <94%), National Institute of Health Stroke Scale (NIHSS) score >15, modified Rankin score (mRS) >3, Glasgow Coma Scale (GCS) <8, hyperglycemia (random blood sugar (RBS) >200 mg/dL), raised total leukocyte count (TLC), and high-sensitivity C-reactive protein (HS-CRP) (>10 mg/L). Both Saposnik et al. (5) and O'Donnell et al. (6) developed good models for acute IS patients. Wang et al. (7) reported an xgboost model with 30 variables, better than the LR reference model 0.891.

However, these models were not applicable to the elderly population in the ICU, and the performance of the model predicting the mortality among the elderly admitted to the ICU was unknown. The elderly patients should be given more attention because the majority of ischemic stroke cases occur in these elderly patients, while young patients who suffer from

IS have a low mortality rate. In addition, with prolonged life expectancy, the aging population experiences a significant increase in stroke incidence. Additionally, elderly patients exhibit physiological changes including neuronal plasticity and decreased repair ability, as well as changes in the structure of the vascular system and complications, which increase the complexity of prediction. Limited data regarding short-term mortality predictors for elderly patients with IS are available. A model based on the LR method was constructed with 469 older patients (8). Furthermore, based on the LR method, Tuttolomondo et al. (9) reported that age, white blood cell (WBC) count, glucose blood level at admission, and Charlson comorbidity index score were directly associated with in-hospital mortality in the elderly.

Several factors were found to be associated with the increased short-term mortality, including age (5), sex (5), stroke severity and subtype (5), smoking (5), atrial fibrillation (5), serum calcium (10), serum troponin (11), Chronic Kidney Disease (12–15), hypertension (15), the National Institute of Health Stroke Scale (NIHSS) (15, 16), neutrophil-to-lymphocyte ratio (17), low triiodothyronine (T3) (18), hyperglycemia (19, 20), plasma brain natriuretic peptide (21), non-alcoholic fatty liver disease (NAFLD) (22), and elevated blood urea nitrogen (BUN)-to-creatinine ratio (23). With numerous variables involved, the complexity of stroke data lends itself well to machine learning (ML) algorithms that incorporate these variables into a predictive model (24). ML algorithms are thought to outperform clinical prediction models based on regression because they make fewer assumptions and can learn complex relationships between predictors and outcomes (25).

In this study, we aimed to develop prediction models for 28-day in-hospital mortality in elderly patients with IS using ML algorithms. The model was based on variables collected at admission. This will improve clinical decision-making and healthcare quality through early risk stratification after acute IS in elderly patients.

Methods

Design and participants

Data of elderly patients with IS were extracted from the eICU Collaborative Research Database (eICU-CRD) version 2.0 (26). All data were extracted from the eICU Collaborative Research Database (eICU-CRD, <https://eicu-crd.mit.edu/>) (certification ID: 42039823). The eICU-CRD database is a publicly available multi-center critical care database made available by Philips Healthcare in partnership with the MIT Laboratory for Computational Physiology and contains de-identified clinical data of over 200,000 patients admitted in the ICU from 2014 to 2015. Individuals were selected if their hospital discharge records contained at least one of the following: International Classification of Diseases (ICD)-9-Clinical Modification (CM) (ICD-9-CM) diagnoses of IS: 434.91 (cerebral artery occlusion, unspecified with cerebral infarction) and IS: I63.50 (cerebral infarction due to unspecified occlusion or stenosis of unspecified cerebral artery). The inclusion criteria for the present study were as follows: (1) first-ever ICU admission and (2) age ≥ 65 years. The exclusion criteria for the present study were as follows: (1) ICU stay <24 h or more than 28 days; (2) individuals with severe liver disease; (3) individuals with heart failure; (4) individuals with metastatic solid tumor; and (5) individuals with more than 30% of missing values. With the clinical information from patients de-identified, the database's official ethics committee has approved the public release of these clinical data. A consent waiver was also given because of anonymized retrospective patient data.

Outcome variables and predictors

The primary outcome event was in-hospital death within 28 days in elderly ICU patients with IS. The clinical data were collected within 24 h of admission. To identify candidate predictor variables, a review of literature was done and the present study selected variables that were available in the eICU. The finally selected 51 variables, including vital signs, demographics, laboratory tests, and comorbidities, are listed in [Table 1](#). To ensure the accuracy of the results, variables with more than 30% missing values are excluded, and the K-Nearest Neighbor algorithm (KNN) is used to fill in those missing values.

Selection procedure

The database was randomly divided into two sets: the training set and the validation set in the ratio of 8:2. The recursive feature elimination (RFE) algorithm was used to filter features until the model's AUC value was >0.7 .

Machine learning model development

The present study applied four common machine learning (ML) algorithms to predict the 28-day in-hospital mortality among ICU elderly patients with IS, including Naïve Bayes (NB), eXtreme Gradient Boosting (xgboost), and logistic regression (LR). A validation set of 241 patients who never participated in the model training was used to evaluate all of those ML metrics. To improve the stability of the prediction model, all continuous features are rescaled to a distribution with a mean of 0 and standard deviation of 1, and the scale conversion is performed. After 10-fold cross-validation, the performances of the three prediction models were compared with each other using areas under the curve, specificity, sensitivity, accuracy, positive predictive value (PPV), negative predictive value (NPV), and F1 score. The best model was selected by the area under the receiver operating characteristic curve (AUC) values of the testing set.

Statistical analysis

Normally distributed continuous data were expressed as the mean with standard errors. To analyze all non-normal homogeneous distributions' continuous characteristics, the Wilcoxon rank sum test was used, which is expressed as the median and interquartile range (IQR). Chi-square analysis or Fisher's exact tests were used to analyze categorical features expressed in frequencies (percentages). Outliers for features will be removed. The imbalance in the distribution of data structures is solved by the SMOTE (synthetic minority oversampling technique) method. The R packages "Nortest" and "CBCgrps" were used for univariate analysis. The RFE function was used for the filtering feature (fivefold cross-validation). Receiver operating characteristic (ROC) mapping and AUC calculation are performed by the "pROC" package, and the interpretability analysis is performed by the "shapviz" package in R (version 4.2.0), data visualization is carried out with the ggplot2 package, and a value of $P < 0.05$ is considered statistically significant.

Results

Population demographics

A total of 2,435 patients were diagnosed with IS at admission. Finally, a total of 1,518 patients with IS were enrolled in this study according to the inclusion criteria and exclusion criteria ([Figure 1](#)), including 636 (51%) women and 600 (49%) men, with a median age of 77 years (IQR, 71–84 years). After 28 days in the hospital, 1,072 patients with IS survived, while 164 died. The differences in characteristics between the survival group and the death group are described in [Table 1](#). A comparison of

TABLE 1 The population demographics and clinical characteristics.

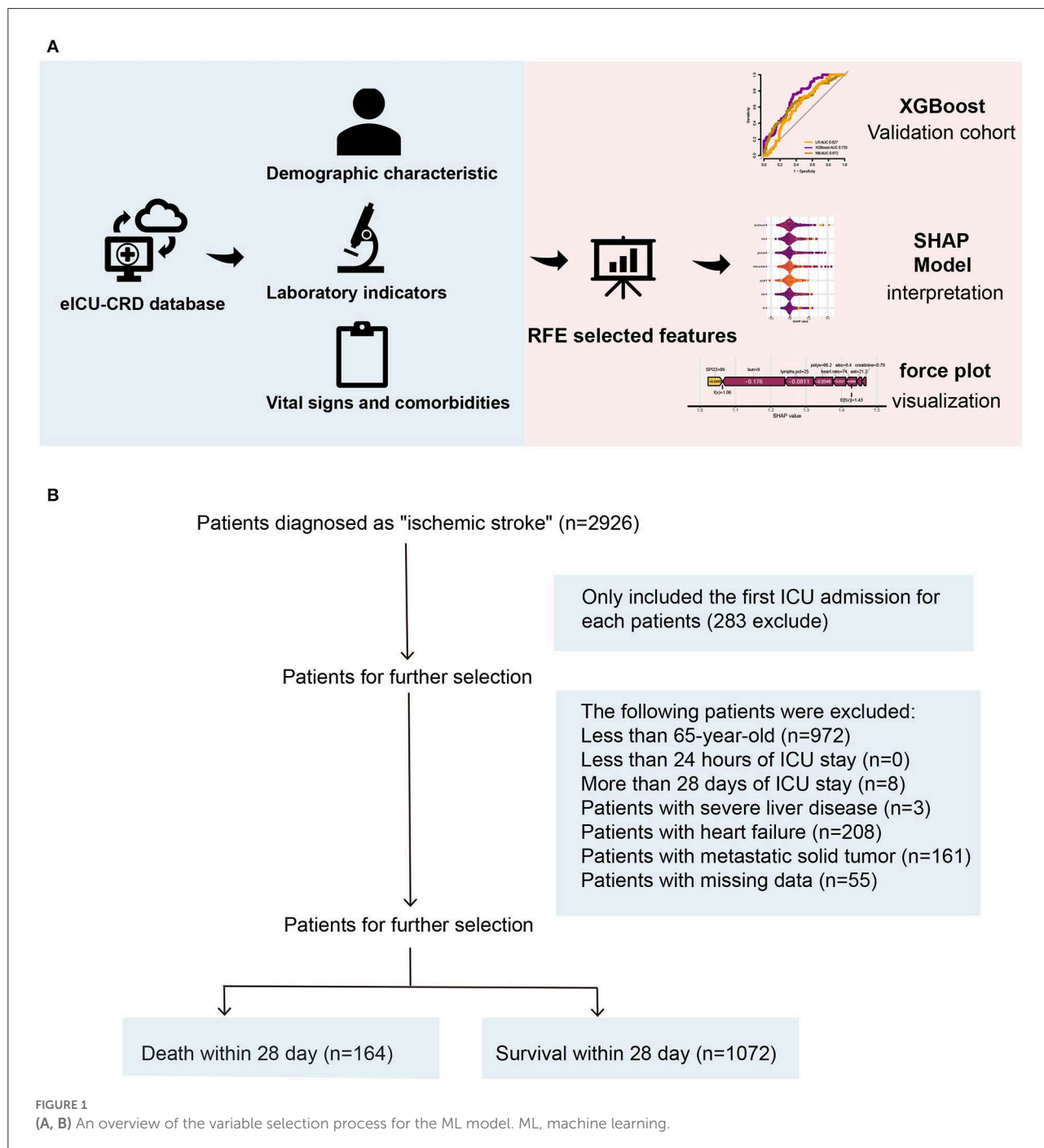
Variables	Total (n = 1,236)	Survival (n = 1,072)	Death (n = 164)	P-value
Age, Median (Q1, Q3)	77 (71, 84)	77 (71, 84)	77 (71.75, 85)	0.544
Gender, N (%)				0.514
Women	636 (51)	556 (52)	80 (49)	
Men	600 (49)	516 (48)	84 (51)	
Ethnicity, N (%)				0.181
Non-white	256 (21)	229 (21)	27 (16)	
White	980 (79)	843 (79)	137 (84)	
BMI, Median (Q1, Q3)	26.74 (23.34, 31.14)	26.66 (23.31, 30.97)	27.25 (23.68, 31.55)	0.535
Aniongap, median (Q1, Q3)	10 (8, 13)	10 (8, 13)	10 (8, 13)	0.312
Albumin, median (Q1, Q3)	3.65 (3.35, 3.85)	3.7 (3.4, 3.85)	3.55 (3.2, 3.8)	< 0.001
Bilirubin, median (Q1, Q3)	0.55 (0.45, 0.7)	0.55 (0.45, 0.7)	0.6 (0.5, 0.8)	0.002
ALT, median (Q1, Q3)	21.75 (17, 27)	21.5 (17, 26.5)	23.25 (18.5, 29)	0.005
AST, median (Q1, Q3)	22 (18.5, 27)	21.5 (18, 26)	24.75 (20, 35.5)	< 0.001
Alp, median (Q1, Q3)	76 (69.5, 91.5)	75.5 (69.5, 91)	81 (71, 94)	0.014
BUN, median (Q1, Q3)	20 (15, 25)	19 (15, 25)	23 (19, 31)	< 0.001
Creatinine, median (Q1, Q3)	1 (0.81, 1.3)	1 (0.8, 1.27)	1.13 (0.84, 1.4)	< 0.001
Sodium, median (Q1, Q3)	139 (136, 141)	139 (136, 141)	139 (136, 141)	0.348
Calcium, median (Q1, Q3)	9 (8.5, 9.4)	9 (8.6, 9.4)	8.9 (8.4, 9.3)	0.039
Chloride, median (Q1, Q3)	104 (101, 107)	104 (101, 107)	104 (100, 106)	0.849
Potassium, median (Q1, Q3)	4 (3.7, 4.4)	4 (3.7, 4.4)	4.2 (3.8, 4.5)	0.006
Glucose, median (Q1, Q3)	126 (105, 155)	125 (104, 152)	134.5 (112, 194.25)	< 0.001
Bicarbonate, median (Q1, Q3)	25 (23, 27)	25 (23, 27)	24 (22, 27)	0.007
WBC, median (Q1, Q3)	8.8 (7.1, 11.6)	8.6 (7, 11.2)	10.92 (8.3, 13.9)	< 0.001
Hematocrit, median (Q1, Q3)	39.1 (35.3, 42.9)	39.1 (35.5, 42.92)	38.7 (34.75, 42.35)	0.485
Hemoglobin, median (Q1, Q3)	13 (11.7, 14.4)	13.1 (11.7, 14.4)	12.9 (11.6, 14.2)	0.504
Platelets, median (Q1, Q3)	211 (174, 260)	210 (176, 260)	212.5 (166.75, 260.5)	0.783
INR, median (Q1, Q3)	1.05 (1, 1.11)	1.04 (1, 1.1)	1.1 (1, 1.2)	< 0.001
PTT, median (Q1, Q3)	28 (26.4, 30)	28 (26.6, 30)	27.9 (25.58, 30.8)	0.416
RBC, median (Q1, Q3)	4.32 (3.88, 4.74)	4.33 (3.9, 4.75)	4.24 (3.8, 4.69)	0.196
Mcv, median (Q1, Q3)	91 (87.57, 94)	91 (87.4, 94)	91.05 (87.7, 95)	0.245
Mchc, median (Q1, Q3)	33.3 (32.5, 34)	33.3 (32.5, 34)	33.2 (32.5, 34.1)	1
Mch, median (Q1, Q3)	30.5 (29.1, 31.65)	30.5 (29, 31.6)	30.5 (29.3, 31.7)	0.538
Rdw, median (Q1, Q3)	13.93 (13.35, 14.8)	13.9 (13.3, 14.8)	14.1 (13.5, 14.9)	0.056
Lymphs.Pct, median (Q1, Q3)	19 (12, 25)	19.6 (13, 26)	15.35 (9, 20.89)	< 0.001
Monos.Pct, median (Q1, Q3)	7.57 (6.2, 9)	7.6 (6.5, 9)	7 (5.6, 8.7)	0.004
Eos, median (Q1, Q3)	1.45 (1, 2)	1.5 (1, 2.22)	1.1 (1, 1.8)	< 0.001
Polys, median (Q1, Q3)	69.4 (63.5, 77)	69 (63, 76.1)	72.53 (67.22, 83)	< 0.001
Total Protein, median (Q1, Q3)	6.7 (6.4, 7.15)	6.7 (6.4, 7.2)	6.75 (6.4, 7.06)	0.471
PT, median (Q1, Q3)	13 (11.9, 14)	12.95 (11.85, 13.8)	13.3 (12.44, 14.43)	< 0.001

(Continued)

TABLE 1 (Continued)

Variables	Total (n = 1,236)	Survival (n = 1,072)	Death (n = 164)	P-value
Triglycerides, median (Q1, Q3)	104 (79, 129)	104 (78, 129)	101.25 (81, 130.25)	0.882
Total cholesterol, median (Q1, Q3)	156.25 (134, 178)	156 (135, 178)	159.25 (125, 180)	0.746
Heart rate, median (Q1, Q3)	78.25 (69, 92)	78 (68, 91)	84 (72, 99.25)	<0.001
Respiratory rate, median (Q1, Q3)	18 (16, 21)	18 (16, 21)	18 (16, 22)	0.369
SpO ₂ , median (Q1, Q3)	97 (96, 99)	97 (96, 99)	98 (96.5, 99)	0.012
Nibp.Systolic, median (Q1, Q3)	151 (131, 166.25)	151 (131, 166)	151.5 (130.75, 169)	0.788
Nibp.Diastolic, median (Q1, Q3)	78 (66, 90)	78 (67, 90)	75.5 (62, 91)	0.144
Stroke, N (%)				0.772
No	979 (79)	851 (79)	128 (78)	
Yes	257 (21)	221 (21)	36 (22)	
Renal disease, N (%)				0.212
No	1,148 (93)	1,000 (93)	148 (90)	
Yes	88 (7)	72 (7)	16 (10)	
Diabetes, N (%)				0.482
No	906 (73)	790 (74)	116 (71)	
Yes	330 (27)	282 (26)	48 (29)	
Myocardial infarction, N (%)				0.758
No	1,142 (92)	989 (92)	153 (93)	
Yes	94 (8)	83 (8)	11 (7)	
Dementia, N (%)				0.885
No	1,169 (95)	1,013 (94)	156 (95)	
Yes	67 (5)	59 (6)	8 (5)	
Chronic pulmonary disease, N (%)				0.493
No	1,136 (92)	988 (92)	148 (90)	
Yes	100 (8)	84 (8)	16 (10)	
Mild liver disease, N (%)				0.048
No	1,233 (100)	1,071 (100)	162 (99)	
Yes	3 (0)	1 (0)	2 (1)	
Hypertension, N (%)				0.919
No	807 (65)	701 (65)	106 (65)	
Yes	429 (35)	371 (35)	58 (35)	
Atrial fibrillation, N (%)				0.15
No	983 (80)	860 (80)	123 (75)	
Yes	253 (20)	212 (20)	41 (25)	
Apsiii, median (Q1, Q3)	35 (26, 50)	33 (25, 46)	51 (37.38, 70)	< 0.001
APACHE II, median (Q1, Q3)	53 (44, 68.62)	51 (43, 65)	69.5 (56, 89)	< 0.001
GCS.Min, median (Q1, Q3)	12 (8, 14)	13 (9, 14)	5.5 (3, 8)	< 0.001
Oasis, median (Q1, Q3)	24 (19, 31)	23 (18, 30)	31 (24.75, 39)	< 0.001

Polys, percentage of polymorphonuclear granulocytes; GCS, Glasgow coma scale; ALT, alanine transaminase; AST, aspartate aminotransferase; ALP, alkaline phosphatase; BUN, blood urea nitrogen; WBC, white blood cells; INR, the international standardization percentage ratio; PT, prothrombin time; SpO₂, pulse oximetry, APSIII, acute physiology score III. There were significant differences in Physiology Score III; APACHE, Acute physiology and chronic health evaluation II score; OASIS, Oxford acute severity of illness score.



baseline characteristics after the SMOTE method is shown in the [Supplementary Table](#).

The levels of albumin, blood calcium, bicarbonate, percentage of lymphocytes, percentage of monocytes, percentage of eosinophils, percentage of polymorphonuclear granulocytes (Polys), and Glasgow Coma Scale (GCS) score were much higher in the survival group compared to the death group ($P < 0.05$). However, the levels of bilirubin, alanine transaminase (ALT),

aspartate aminotransferase (AST), alkaline phosphatase (ALP), BUN, creatinine, potassium, glucose, WBC, the international standardization percentage ratio (INR), prothrombin time (PT), pulse oximetry (SpO_2), Acute Physiology Score III (APSI), Acute Physiology And Chronic Health Evaluation II Score (APACHE II) score, and Oxford Acute Severity of Illness Score (OASIS) were higher in the death group. The death group also had more patients with mild liver disease ($P < 0.05$).

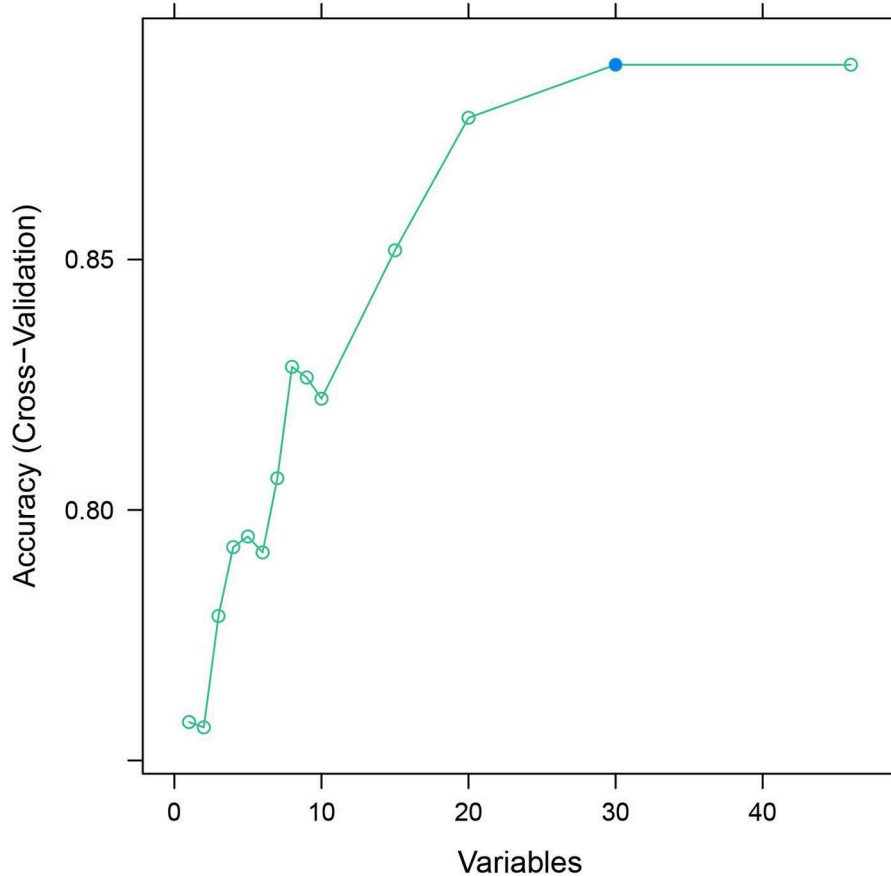


FIGURE 2
Recursive feature elimination regression analysis.

Feature selection

After feature selection using the recursive feature elimination (RFE) algorithm, eight features remained (Figure 2). Features that included SpO₂, BUN, percentage of lymphocytes, AST, polymorphonuclear granulocytes (Polys), heart rate, WBC, and creatinine could be used as predictors of the prediction model.

Model evaluation and comparison

We attempted to use several widely applied machine learning (ML) algorithms (NB, xgboost) for the construction of the prediction models.

We used a receiver operating characteristic (ROC) curve, specificity, sensitivity, accuracy, PPV, NPV, and F1 score to evaluate the prediction model in both training and validation data. Before evaluation, optimal cutoffs were determined by maximizing the Youden index (i.e., sensitivity + specificity -

1) by the ROC curve in the validation set. In the validation set, ROC curves revealed that xgboost had the best predictive performances, with an area under the curve of 0.733, better than that of the area under the curves of NB (0.672) and LR (0.627) (Figure 3).

In the training set, the accuracy of the xgboost model (0.994) was higher than the accuracies of the other models. All details about the parameters of the models developed with different algorithms are shown in Table 2.

Model interpretation

As shown in Figure 4, the Tree-Explainer class imported from the SHapley Additive exPlanations (SHAP) package is used to analyze the independent validation set in the xgboost model (27). Figure 4 shows the relationship between the value of the feature and the corresponding SHAP value, which suggests the magnitude of the feature's contribution to the occurrence of the ending event. Following the SHAP summary plot of

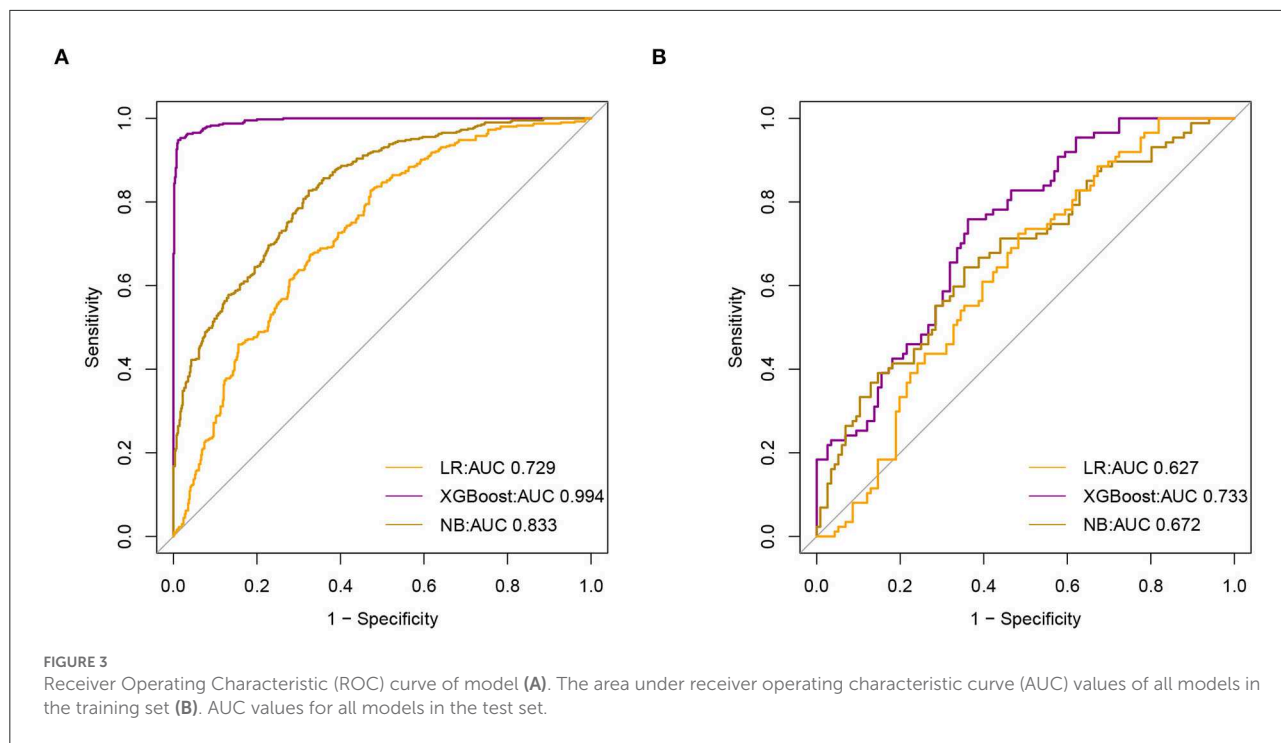


TABLE 2 Model performance metrics.

Model	F1	Accuracy	Sensitivity	Specificity	PPV	NPV
Training set						
xgboost	0.963	0.969	0.943	0.989	0.985	0.959
NB	0.695	0.738	0.699	0.767	0.692	0.772
LR	0.555	0.665	0.489	0.796	0.643	0.675
Validation set						
xgboost	0.622	0.665	0.644	0.681	0.602	0.718
NB	0.604	0.626	0.667	0.595	0.552	0.704
LR	0.471	0.663	0.442	0.779	0.504	0.732

28-day death in elderly ICU patients with IS, the associated characteristics with the highest importance score were SpO₂, BUN, percentage of lymphocytes, AST, Polys, heart rate, WBC, and creatinine.

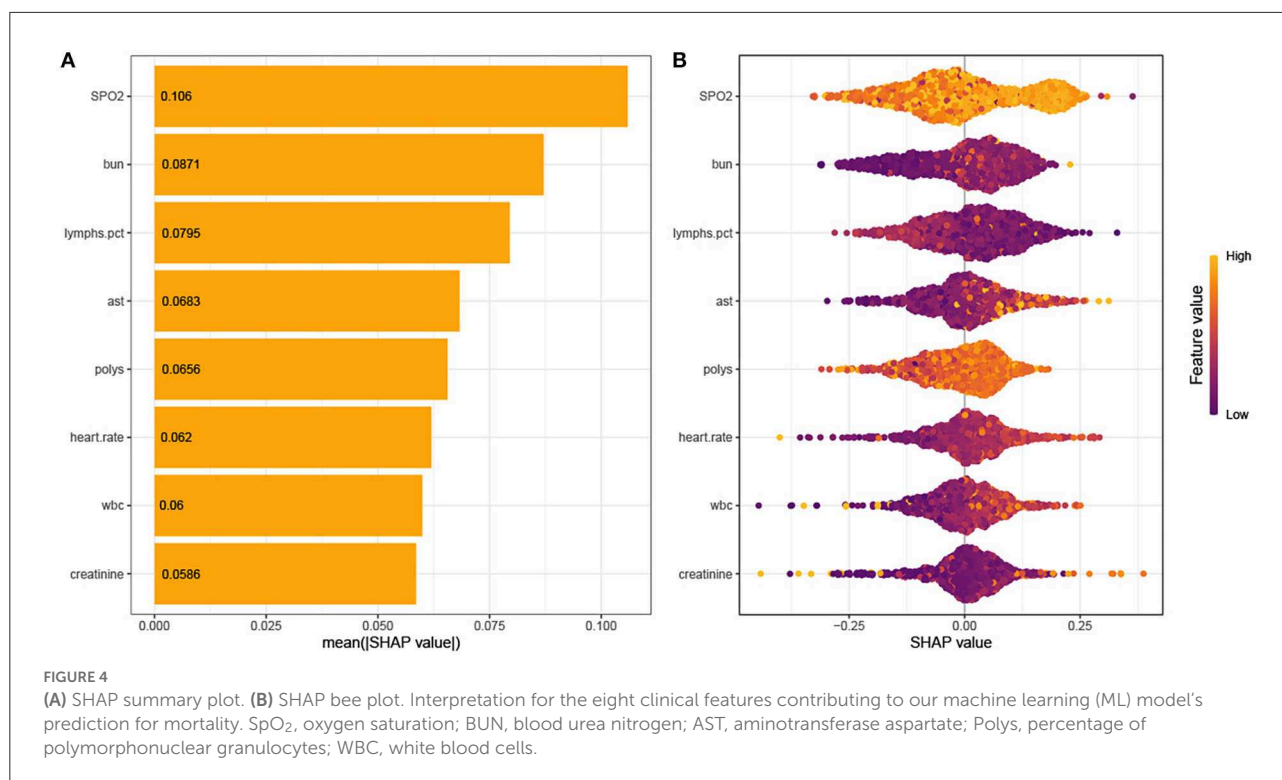
ML explainability results for two patients

Using the SHAP force plot, the Shapley value for each feature, which increases (positive value) or decreases (negative value) the prediction from its baseline, was visualized (28). A Shapley value is based on the average of all predictions, and in this case, 53.4% of the held-out validation set.

Patient 1

This is an elderly patient who was admitted to the ICU for IS. The patient died on the 28th day. The predicted probability for mortality is high at 72.4%, compared with the baseline of 53.4% (average mortality of the validation set). The features detected by the model for predicting a higher mortality in this patient include Polys, WBC, BUN, AST, and creatinine. In Patient 1, all characteristics, except creatinine, supported the occurrence of the outcome. It was predicted by the ML model that this patient would die, and it truly occurred during admission (true positive).

From a physician’s point of view, the ICU observation for this IS patient is reasonable, considering the higher BUN, AST, and creatinine levels in the ICU.



Patient 2

This is an elderly patient who was admitted to the ICU for IS. The patient survived on the 28th day. The predicted probability for mortality by the model was 52.0% compared with the baseline of 53.4%. The features detected by the model for predicting mortality were all normal. In Patient 2, all features, except creatinine and AST, did not support the occurrence of the outcome. It was predicted by the ML model that this patient would survive, and it occurred during admission (true negative) (Figure 5).

From a physician's perspective, the ICU observation for this IS patient is reasonable, considering the normal values in the ICU.

Discussion

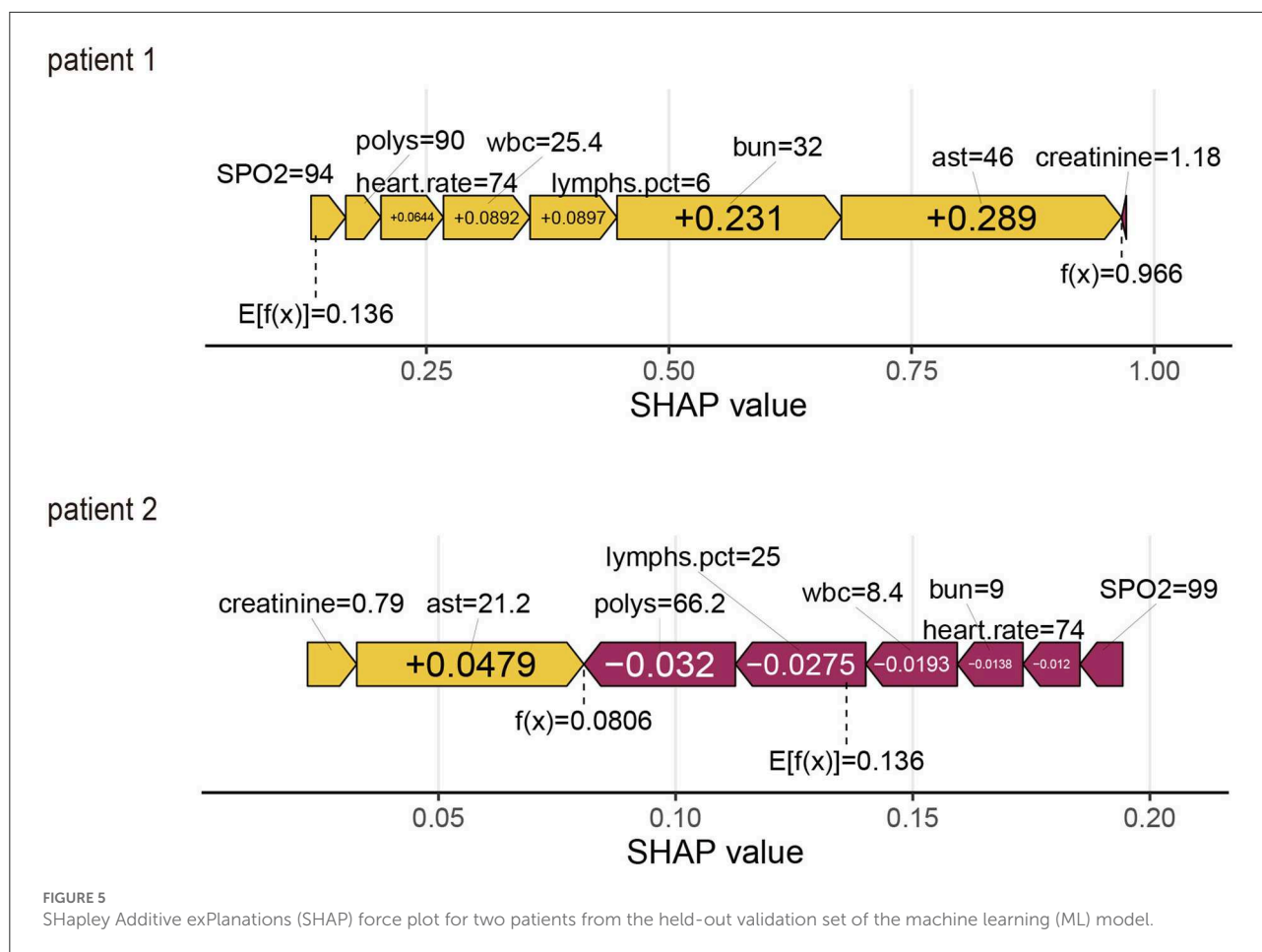
The novelty of this study is the use of machine learning (ML) to come up with a model that is superior to the traditional LR model. We used this machine learning (ML)-based model that was built on objective indicators to predict the short-term in-hospital mortality risk of elderly people. The model can be used as an automatic warning system to indicate the risk of death of patients. Previous studies proved that the C statistic can improve by 0.12 with the NIHSS score added to the model (29). The C statistic of our model is 0.733, which is higher than those of the previously published models without variables

about the disease severity (29, 30). Despite the lack of an NIHSS score, our model was based only on objective indicators that could alert physicians to refine the NIHSS score in time, thus enhancing further the accuracy of the model. With our alerting model, clinical physicians may detect changes in condition in time, which is important for these elderly patients. Moreover, nurses can also provide early warning to indicate the risk of patient death with our alerting model. In addition, for those patients in ICU who have difficulty in body checking or elderly patients with no obvious changes in physical signs, objective indicators would be useful tools to find changes more quickly and timely.

Main findings

Ischemic stroke is the most common type of stroke, which predominantly affects older adults and has a high short-term mortality rate after admission to the ICU. Therefore, establishing a death prediction model is essential for the risk stratification of these elderly patients with IS.

The present study is the first to use machine learning (ML) models to predict the short-term prognosis of elderly patients with IS admitted to the ICU, which provides a basis for identifying those critically ill older IS patients early. The present study compares the performance of multiple supervised machine learning (ML) algorithms with that of traditional



LR methods to explore the best model for predicting short-term death in elderly patients with IS. Each model's prediction performance on the test set resembles that on the training set, indicating that the model has good robustness. In particular, xgboost model based on machine learning shows the best short-term death prediction accuracy compared with those of the traditional LR method and another common machine learning algorithm.

The existing scores for 30-day mortality prediction are PLAN (pre-admission comorbidities, level of consciousness, age, and neurologic deficit) (6) and IScore (5). PLAN was externally validated with an AUC of 0.87 and IScore with an AUC of 0.8. Bonkhoff et al. (16) also reported a predictive model with an AUC of 0.90. Smith et al. (29) established a validation data set prediction performance AUC of 0.72. These models are not designed for elderly patients in the ICU. The present study includes a different population that consists of elderly patients with ischemic stroke in the ICU. Due to a lack of certain variables [PLAN score: stroke subtype, cancer, Canadian Neurological Scale (CNS) score, and symptomatic parameters; IScore: stroke severity, stroke subtype, and cancer; Bonkhoff

et al. (16): Situation of living, stroke severity, and symptoms at admission; Smith et al. (29): Mode of arrival, NIHSS score, and smoke], the present study could not externally validate these models and evaluate the applicability for the elderly in the ICU.

In addition, the present study provides a simpler prediction tool that displays clinically useful discrimination of in-hospital risk of mortality for elderly patients with IS in the ICU. Our model is based on readily available variables of the eICU-CRD database, including patient demographics, history, and examination information. The database did not include variables about disease severity such as the Canadian Neurological Scale (CNS) and the National Institutes of Health Stroke Scale (NIHSS). A more widespread use of stroke severity assessments is probably held back by the time needed to complete even a short assessment. NIHSS strongly influences mortality and improvement. When the NIHSS score was added to the model, the C statistic can improve by 0.12 (29). The C statistic of our model is 0.733, which is higher than those of the previously published models without variables about the disease severity (29, 30). This is to say, with the data of

NIHSS, our model will improve the C statistic of the xgboost model. While both Wang et al. (7) and our study prove that machine learning was better in the prediction of outcomes in patients with IS than the LR models, our model may present a better performance than PLAN and IScore without NIHSS data.

Some ML models for IS patients (7) have limited clinical applications, and the lack of interpretability of these models is the major barrier. Our results for elderly IS patients in the ICU are more reliable and transparent using the SHAP method, which not only help to get explanations for individual patients but also offer a global explanation for our cohort.

We found elevated oxygen saturation, AST, Polys, heart rate, WBC, and creatinine levels and decreased BUN level, and the percentage of lymphocytes could be used as predictors of the prediction model for 28-day in-hospital mortality in elderly patients with IS admitted to the ICU. Bhatia et al. (31) found impaired consciousness, high total leukocyte count, raised erythrocyte sedimentation rate (ESR), elevated creatinine and ALT, estimated within 24 h of hospitalization, as the most important indicators of 30-day mortality in patients with first-time ischemic stroke. WBC, BUN, and creatinine are associated with the mortality of patients with IS in the ICU (32). Our ML model also emphasizes the importance of WBC, ALT, BUN, and creatinine levels. AST and BUN were reported to be associated with mortality in the ICU (33).

Limitations

We conceived and developed an observational study that is known to increase the risk of selection bias. Additionally, in the eICU-CRD database, data are collected from electronic health records of 208 hospitals across the country; however, each hospital populates the data differently, which results in significant missing data. Our statistical models did not include variables with more than 30% missing data, which was a major limitation. In addition, the predicting models were built with the US elderly population as a reference; therefore, its application to different ethnic groups and non-elderly people requires further investigation and validation.

Implications

Predicting mortality helps physicians make better decisions and judgments, as well as coordinate services, communicate with patients, and adjust care plans. Moreover, it provides a reference for assessing stroke mortality and hospital performance.

Data availability statement

Publicly available datasets were analyzed in this study. This data can be found at: The data analyzed in this study is available at <https://eicu-crd.mit.edu/>.

Ethics statement

The eICU-CRD databases were approved by the Massachusetts Institute of Technology (Cambridge, MA) and the Beth Israel Deaconess Medical Center (Boston, MA). The data used for this study are publicly available and de-identified.

Author contributions

JH, ZL, and XL were responsible for conceiving the study. XD, JD, and HC collected data. WJ, YJ, and TS were responsible for writing the manuscript and for revision of the manuscript. ZL was responsible for designing the study and article processing charge (APC). All authors have approved the submitted version.

Acknowledgments

We thanks to all the staff who participated in this article.

Conflict of interest

The authors declare that the research was conducted in the absence of any commercial or financial relationships that could be construed as a potential conflict of interest.

Publisher's note

All claims expressed in this article are solely those of the authors and do not necessarily represent those of their affiliated organizations, or those of the publisher, the editors and the reviewers. Any product that may be evaluated in this article, or claim that may be made by its manufacturer, is not guaranteed or endorsed by the publisher.

Supplementary material

The Supplementary Material for this article can be found online at: <https://www.frontiersin.org/articles/10.3389/fpubh.2022.1086339/full#supplementary-material>

References

- Katan M, Luft A. Global burden of stroke. *Semin Neurol.* (2018) 38:208–11. doi: 10.1055/s-0038-1649503
- Kirkman MA, Citerio G, Smith M. The intensive care management of acute ischemic stroke: an overview. *Intensive Care Med.* (2014) 40:640–53. doi: 10.1007/s00134-014-3266-z
- van Valburg MK, Termorshuizen F, Brinkman S, Abdo WF, van den Bergh WM, Horn J, et al. Long-term mortality among ICU patients with stroke compared with other critically ill patients. *Crit Care Med.* (2020) 48:e876–83. doi: 10.1097/CCM.0000000000004492
- Mittal SH, Goel D. Mortality in ischemic stroke score: a predictive score of mortality for acute ischemic stroke. *Brain Circ.* (2017) 3:29–34. doi: 10.4103/2394-8108.203256
- Saposnik G, Kapral MK, Liu Y, Hall R, O'Donnell M, Raptis S, et al. IScore: a risk score to predict death early after hospitalization for an acute ischemic stroke. *Circulation.* (2011) 123:739–49. doi: 10.1161/CIRCULATIONAHA.110.983353
- O'Donnell MJ, Fang J, D'Uva C, Saposnik G, Gould L, McGrath E, et al. The PLAN score: a bedside prediction rule for death and severe disability following acute ischemic stroke. *Arch Intern Med.* (2012) 172:1548–56. doi: 10.1001/2013.jamainternmed.30
- Wang W, Rudd AG, Wang Y, Curcin V, Wolfe CD, Peek N, et al. Risk prediction of 30-day mortality after stroke using machine learning: a nationwide registry-based cohort study. *BMC Neurol.* (2022) 22:195. doi: 10.1186/s12883-022-02840-w
- Zuliani G, Cherubini A, Ranzini M, Ruggiero C, Atti AR, Fellin R. Risk factors for short-term mortality in older subjects with acute ischemic stroke. *Gerontology.* (2006) 52:231–6. doi: 10.1159/000093655
- Tuttolomondo A, Pedone C, Pinto A, Di Raimondo D, Fernandez P, Di Sciacca R, et al. Predictors of outcome in acute ischemic cerebrovascular syndromes: the GIFA study. *Int J Cardiol.* (2008) 125:391–6. doi: 10.1016/j.ijcard.2007.03.109
- Lu Y, Ma X, Tazmini K, Yang M, Zhou X, Wang Y. Admission serum calcium level and short-term mortality after acute ischemic stroke: a secondary analysis based on a Norwegian retrospective cohort. *Front Neurol.* (2022) 13:889518. doi: 10.3389/fneur.2022.889518
- Peddada K, Cruz-Flores S, Goldstein LB, Feen E, Kennedy KF, Heuring T, et al. Ischemic stroke with troponin elevation: patient characteristics, resource utilization, and in-hospital outcomes. *Cerebrovasc Dis.* (2016) 42:213–23. doi: 10.1159/000445526
- Miwa K, Koga M, Nakai M, Yoshimura S, Sasahara Y, Koge J, et al. Etiology and outcome of ischemic stroke in patients with renal impairment including chronic kidney disease: Japan stroke data bank. *Neurology.* (2022) 98:e1738–47. doi: 10.1212/WNL.000000000000200153
- El Husseini N, Fonarow GC, Smith EE, Ju C, Schwamm LH, Hernandez AF, et al. Renal dysfunction is associated with poststroke discharge disposition and in-hospital mortality: findings from get with the guidelines-stroke. *Stroke.* (2017) 48:327–34. doi: 10.1161/STROKEAHA.116.014601
- Wang IK, Liu CH, Yen TH, Jeng JS, Sung SF, Huang PH, et al. Renal function is associated with 1-month and 1-year mortality in patients with ischemic stroke. *Atherosclerosis.* (2018) 269:288–93. doi: 10.1016/j.atherosclerosis.2017.11.029
- Hayden D, McCarthy C, Akijian L, Callaly E, D NC, Horgan G, et al. Renal dysfunction and chronic kidney disease in ischemic stroke and transient ischemic attack: a population-based study. *Int J Stroke.* (2017) 12:761–9. doi: 10.1177/1747493017701148
- Bonkhoff AK, Rübsamen N, Grefkes C, Rost NS, Berger K, Karch A. Development and validation of prediction models for severe complications after acute ischemic stroke: a study based on the stroke registry of northwestern Germany. *J Am Heart Assoc.* (2022) 11:e023175. doi: 10.1161/JAHA.121.023175
- Song SY, Zhao XX, Rajah G, Hua C, Kang RJ, Han YP, et al. Clinical significance of baseline neutrophil-to-lymphocyte ratio in patients with ischemic stroke or hemorrhagic stroke: an updated meta-analysis. *Front Neurol.* (2019) 10:1032. doi: 10.3389/fneur.2019.01032
- Zhang Y, Meyer MA. Clinical analysis on alteration of thyroid hormones in the serum of patients with acute ischemic stroke. *Stroke Res Treat.* (2010) 2010:290678. doi: 10.4061/2010/290678
- Williams LS, Rotich J, Qi R, Fineberg N, Espay A, Bruno A, et al. Effects of admission hyperglycemia on mortality and costs in acute ischemic stroke. *Neurology.* (2002) 59:67–71. doi: 10.1212/WNL.59.1.67
- Mi D, Wang P, Yang B, Pu Y, Yang Z, Liu L. Correlation of hyperglycemia with mortality after acute ischemic stroke. *Ther Adv Neurol Disord.* (2018) 11:1756285617731686. doi: 10.1177/1756285617731686
- Shibazaki K, Kimura K, Iguchi Y, Aoki J, Sakai K, Kobayashi K. Plasma brain natriuretic peptide predicts death during hospitalization in acute ischaemic stroke and transient ischaemic attack patients with atrial fibrillation. *Euro J Neurol.* (2011) 18:165–9. doi: 10.1111/j.1468-1331.2010.03101.x
- Alkagiet S, Papagiannis A, Tziomalos K. Associations between nonalcoholic fatty liver disease and ischemic stroke. *World J Hepatol.* (2018) 10:474–8. doi: 10.4254/wjh.v10.i7.474
- Schrock JW, Glasenapp M, Drogell K. Elevated blood urea nitrogen/creatinine ratio is associated with poor outcome in patients with ischemic stroke. *Clin Neurol Neurosurg.* (2012) 114:881–4. doi: 10.1016/j.clineuro.2012.01.031
- Jiang F, Jiang Y, Zhi H, Dong Y, Li H, Ma S, et al. Artificial intelligence in healthcare: past, present and future. *Stroke Vasc Neurol.* (2017) 2:230–43. doi: 10.1136/svn-2017-000101
- Amisha, Malik P, Pathania M, Rathaur VK. Overview of artificial intelligence in medicine. *J Family Med Prim Care.* (2019) 8:2328–31. doi: 10.4103/jfmpc.jfmpc_440_19
- Pollard TJ, Johnson AEW, Raffa JD, Celi LA, Mark RG, Badawi O. The eICU collaborative research database, a freely available multi-center database for critical care research. *Sci Data.* (2018) 5:180178. doi: 10.1038/sdata.2018.178
- Lundberg SM, Erion G, Chen H, DeGrave A, Prutkin JM, Nair B, et al. From local explanations to global understanding with explainable AI for trees. *Nat Mach Intell.* (2020) 2:56–67. doi: 10.1038/s42256-019-0138-9
- Lundberg SM, Nair B, Vavilala MS, Horibe M, Eisses MJ, Adams T, et al. Explainable machine-learning predictions for the prevention of hypoxaemia during surgery. *Nat Biomed Eng.* (2018) 2:749–60. doi: 10.1038/s41551-018-0304-0
- Smith EE, Shobha N, Dai D, Olson DM, Reeves MJ, Saver JL, et al. Risk score for in-hospital ischemic stroke mortality derived and validated within the get with the guidelines-stroke program. *Circulation.* (2010) 122:1496–504. doi: 10.1161/CIRCULATIONAHA.109.932822
- Zhu H, Hill MD. Stroke: the Elixhauser index for comorbidity adjustment of in-hospital case fatality. *Neurology.* (2008) 71:283–7. doi: 10.1212/01.wnl.0000318278.41347.94
- Bhatia RS, Garg RK, Gaur SP, Kar AM, Shukla R, Agarwal A, et al. Predictive value of routine hematological and biochemical parameters on 30-day fatality in acute stroke. *Neurol India.* (2004) 52:220–3.
- Ho WM, Lin JR, Wang HH, Liou CW, Chang KC, Lee JD, et al. Prediction of in-hospital stroke mortality in critical care unit. *Springerplus.* (2016) 5:1051. doi: 10.1186/s40064-016-2687-2
- Hedjoudje A, Farha J, Cheurfa C, Grabar S, Weiss E, Badurdeen D, et al. Serum phosphate is associated with mortality among patients admitted to ICU for acute pancreatitis. *United European Gastroenterol J.* (2021) 9:534–42. doi: 10.1002/ueg2.12059