



## OPEN ACCESS

EDITED AND REVIEWED BY  
Amanda Venta,  
University of Houston, United States

\*CORRESPONDENCE  
Marion Robin  
✉ marion.robin@imm.fr

RECEIVED 27 March 2024  
ACCEPTED 29 April 2024  
PUBLISHED 22 May 2024

CITATION  
Robin M, Belbèze J, Pham-Scottez A,  
Shadili G, Peres V, Silva J, Corcos M and  
Speranza M (2024) Corrigendum: Paradoxes  
in borderline emotional dysregulation in  
adolescence: influence of parenting, stressful  
life events, and attachment.  
*Front. Psychiatry* 15:1408042.  
doi: 10.3389/fpsyt.2024.1408042

COPYRIGHT  
© 2024 Robin, Belbèze, Pham-Scottez, Shadili,  
Peres, Silva, Corcos and Speranza. This is an  
open-access article distributed under the terms  
of the [Creative Commons Attribution License  
\(CC BY\)](#). The use, distribution or reproduction  
in other forums is permitted, provided the  
original author(s) and the copyright owner(s)  
are credited and that the original publication  
in this journal is cited, in accordance with  
accepted academic practice. No use,  
distribution or reproduction is permitted  
which does not comply with these terms.

# Corrigendum: Paradoxes in borderline emotional dysregulation in adolescence: influence of parenting, stressful life events, and attachment

Marion Robin<sup>1,2\*</sup>, Jean Belbèze<sup>1</sup>, Alexandra Pham-Scottez<sup>3</sup>,  
Gérard Shadili<sup>1</sup>, Victoire Peres<sup>1</sup>, Jérôme Silva<sup>1</sup>,  
Maurice Corcos<sup>1,2</sup> and Mario Speranza<sup>4,5</sup>

<sup>1</sup>Department of Adolescent and Young Adult Psychiatry, Institut Mutualiste Montsouris, Paris, France, <sup>2</sup>Medical School, Paris Descartes University, Medical School, Paris, France, <sup>3</sup>University Hospital Group, Paris Psychiatry and Neurosciences, Paris, France, <sup>4</sup>Versailles General Hospital, Le Chesnay, France, <sup>5</sup>Paris-Saclay University, UVSQ, CESP, INSERM, Gif sur Yvette, France

## KEYWORDS

borderline, adolescent, attachment, alexithymia, parental bonding (PBI), stressful life events

## A corrigendum on

[Paradoxes in borderline emotional dysregulation in adolescence:  
influence of parenting, stressful life events, and attachment](#)

by Robin M, Belbèze J, Pham-Scottez A, Shadili G, Peres V, Silva J, Corcos M and Speranza M  
(2021). *Front. Psychiatry* 12:735615. doi: 10.3389/fpsyt.2021.735615

In the published article, there was an error in the legend for [Figure 1](#) as published.

The sentence “BPD scores are represented in blue, and HC’s in red” is incorrect.

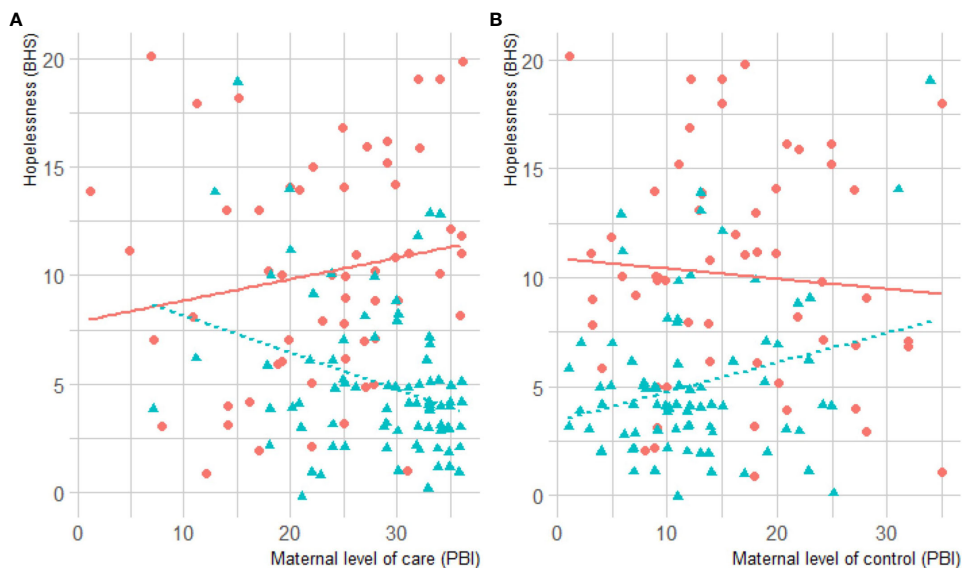
The corrected legend appears below.

“BPD scores are represented in red, and HC’s in blue”

The authors apologize for this error and state that this does not change the scientific conclusions of the article in any way. The original article has been updated.

## Publisher’s note

All claims expressed in this article are solely those of the authors and do not necessarily represent those of their affiliated organizations, or those of the publisher, the editors and the reviewers. Any product that may be evaluated in this article, or claim that may be made by its manufacturer, is not guaranteed or endorsed by the publisher.



**FIGURE 1**  
**(A)** Correlation between maternal care and hopelessness. **(B)** Correlation between maternal control and hopelessness in BPD and HC groups. BPD scores are represented in red, and HC's in blue. BHS, Beck Hopelessness Scale; BPD, Borderline Personality Disorder; HC, healthy controls.