



Corrigendum: Exploration of the Role of Serine Proteinase Inhibitor A3 in Alcohol Dependence Using Gene Expression Omnibus Database

Bo Zhang^{1†}, Gang Wang^{2†}, Cheng Bing Huang^{3†}, Jian Nan Zhu³, Yong Xue³ and Jian Hu^{1*}

¹ Department of Psychiatry, The First Affiliated Hospital of Harbin Medical University, Harbin, China, ² Department of Substance Dependence, Wuhan Mental Health Center, Wuhan, China, ³ The Third People's Hospital of Huai'an, Huai'an, China

Keywords: alcohol dependence, bioinformatics analysis, differently expressed genes, SERPINA3, relapse biomarkers

OPEN ACCESS

Edited and reviewed by:

Francesco Paolo Busardò,
Marche Polytechnic University, Italy

*Correspondence:

Jian Hu
hj13936170818@163.com

[†]These authors have contributed
equally to this work

Specialty section:

This article was submitted to
Addictive Disorders,
a section of the journal
Frontiers in Psychiatry

Received: 18 January 2022

Accepted: 09 February 2022

Published: 15 March 2022

Citation:

Zhang B, Wang G, Huang CB,
Zhu JN, Xue Y and Hu J (2022)
Corrigendum: Exploration of the Role
of Serine Proteinase Inhibitor A3 in
Alcohol Dependence Using Gene
Expression Omnibus Database.
Front. Psychiatry 13:857211.
doi: 10.3389/fpsy.2022.857211

A Corrigendum on

Exploration of the Role of Serine Proteinase Inhibitor A3 in Alcohol Dependence Using Gene Expression Omnibus Database

by Zhang, B., Wang, G., Huang, C. B., Zhu, J. N., Xue, Y., and Hu, J. (2022). *Front. Psychiatry* 12:779143. doi: 10.3389/fpsy.2021.779143

In the original article, there was a mistake in **Figure 5** as published. We found a problem with the layout of the images. **Figure 5** should contain two charts, the **Figures 5, 6** in the original article as published.

In the original article, there was a mistake in **Figure 6** as published. We found a problem with the layout of the images. **Figure 6** should be **Figure 7** in the original article as published.

In the original article, there was a mistake in **Figure 7** as published. We found a problem with the layout of the images. **Figure 7** should be **Figure 8** in the original article as published.

In the original article, there was a mistake in **Figure 8** as published. We found a problem with the layout of the images. **Figure 8** should be the chart which was contained inside the Supplemental Material in the original article as published. The corrected figures appear below.

The authors apologize for these errors and state that they do not change the scientific conclusions of the article in any way. The original article has been updated.

Publisher's Note: All claims expressed in this article are solely those of the authors and do not necessarily represent those of their affiliated organizations, or those of the publisher, the editors and the reviewers. Any product that may be evaluated in this article, or claim that may be made by its manufacturer, is not guaranteed or endorsed by the publisher.

Copyright © 2022 Zhang, Wang, Huang, Zhu, Xue and Hu. This is an open-access article distributed under the terms of the Creative Commons Attribution License (CC BY). The use, distribution or reproduction in other forums is permitted, provided the original author(s) and the copyright owner(s) are credited and that the original publication in this journal is cited, in accordance with accepted academic practice. No use, distribution or reproduction is permitted which does not comply with these terms.

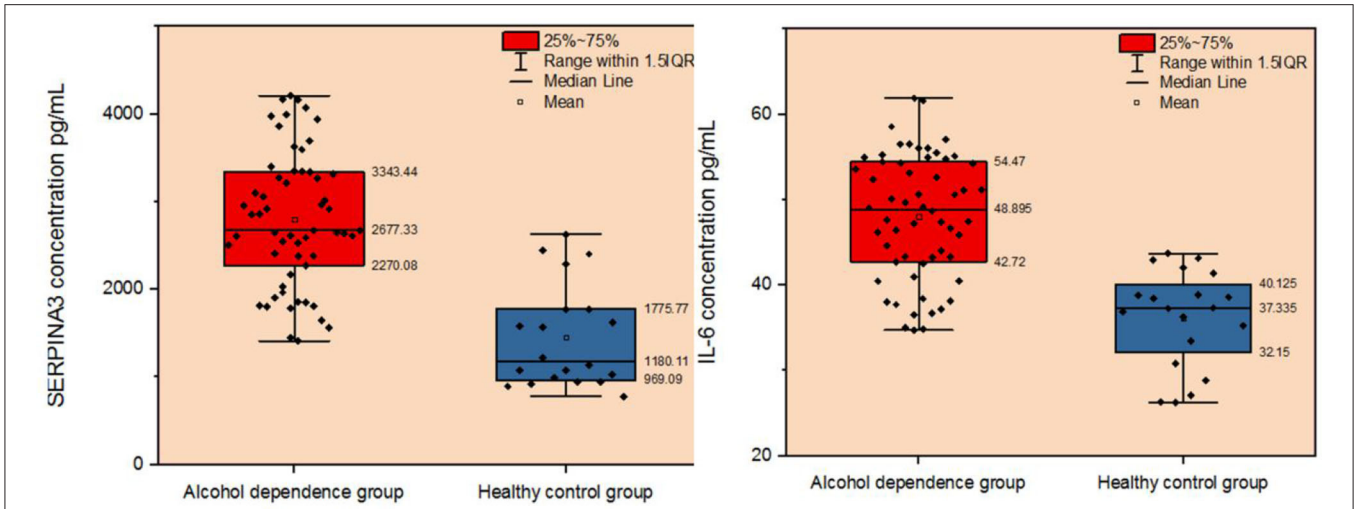


FIGURE 5 | Comparison of plasma SERPINA3 and IL-6 levels between patients with alcohol dependence and the healthy control group.

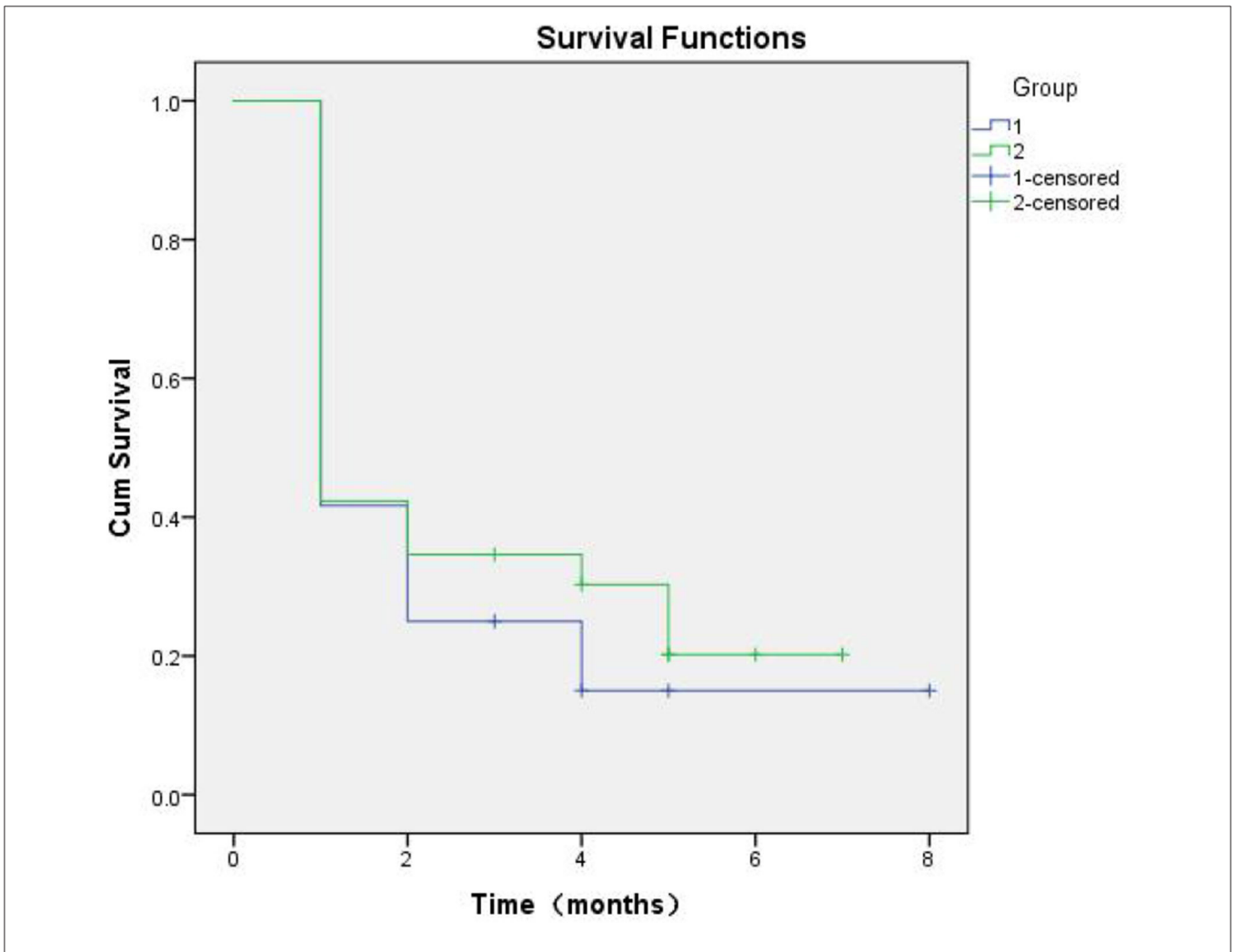


FIGURE 6 | Kaplan-Meier curves based on SERPINA3 levels in patients with alcohol dependence during follow-up of up to 8 months ($P = 0.489$).

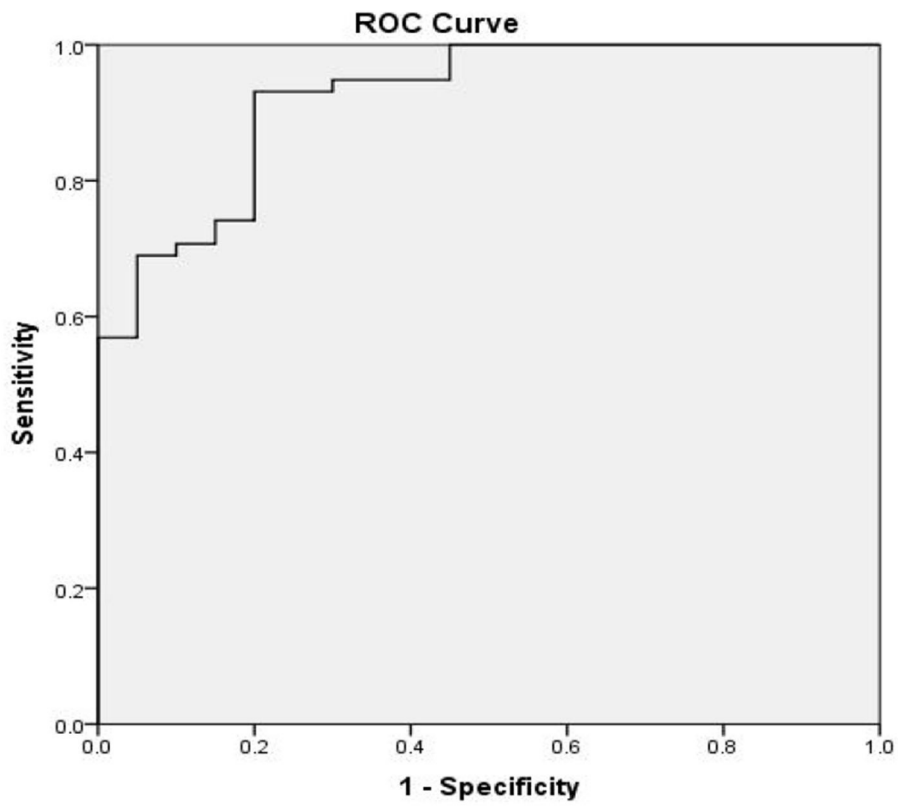


FIGURE 7 | Receiver operator characteristic (ROC) curve based on SERPINA3 levels in patients with alcohol dependence. The area under the curve (AUC) for SERPINA3 was 0.921 ($P < 0.0001$), sensitivity was 93.1%, and specificity was 80.0%.

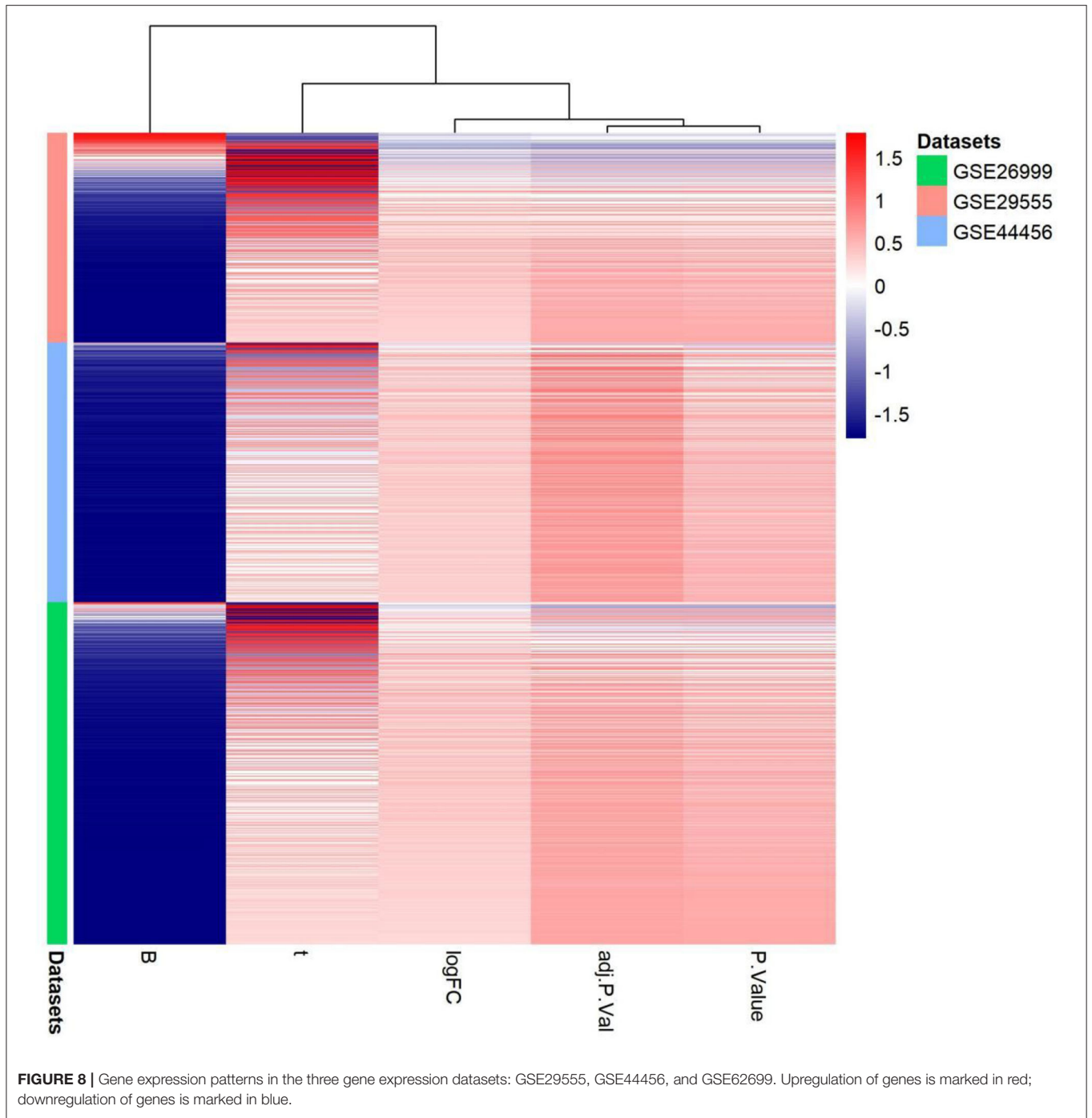


FIGURE 8 | Gene expression patterns in the three gene expression datasets: GSE29555, GSE44456, and GSE62699. Upregulation of genes is marked in red; downregulation of genes is marked in blue.