



# Developing an App to Screen for Dual Disorders: A Tool for Improving Treatment Services in Mexico

Rodrigo Marín-Navarrete<sup>1\*</sup>, Marta Torrens<sup>2</sup>, Aldebarán Toledo-Fernández<sup>1,3</sup>, Joan Ignasi Mestre-Pinto<sup>2</sup>, Ricardo Sánchez-Domínguez<sup>1</sup>, Alejandro Pérez-Lopez<sup>1</sup>, Ricardo Saracco-Alvarez<sup>1</sup>, Eduardo Ángel Madrigal-De León<sup>1</sup> and Nestor Szerman<sup>4</sup>

<sup>1</sup> Unidad de Ensayos Clínicos en Adicciones y Salud Mental, Instituto Nacional de Psiquiatría Ramón de la Fuente Muñiz, Mexico City, Mexico, <sup>2</sup> Programa de Investigación en Neurociencias, Institut Hospital del Mar d'Investigacions Mèdiques, Barcelona, Spain, <sup>3</sup> Centro Anáhuac de Investigación en Psicología, Facultad de Psicología, Universidad Anahuac Mexico, Mexico, Mexico, <sup>4</sup> Hospital Gregorio Marañón, Servicio de Salud Mental Retiro, Madrid, Spain

## OPEN ACCESS

### Edited by:

Christopher Jonathan Evans,  
University of California, Los Angeles,  
United States

### Reviewed by:

Diana Martínez,  
Columbia University, United States  
Yulia Golub,  
University Hospital Carl Gustav  
Carus, Germany

### \*Correspondence:

Rodrigo Marín-Navarrete  
rmarin@imp.edu.mx

### Specialty section:

This article was submitted to  
Addictive Disorders,  
a section of the journal  
Frontiers in Psychiatry

Received: 19 April 2021

Accepted: 31 August 2021

Published: 29 October 2021

### Citation:

Marín-Navarrete R, Torrens M,  
Toledo-Fernández A, Mestre-Pinto JI,  
Sánchez-Domínguez R,  
Pérez-Lopez A, Saracco-Alvarez R,  
Madrigal-De León EA and Szerman N  
(2021) Developing an App to Screen  
for Dual Disorders: A Tool for  
Improving Treatment Services in  
Mexico. *Front. Psychiatry* 12:697598.  
doi: 10.3389/fpsy.2021.697598

**Background:** Previous studies in Mexico undertaken at residential facilities for treating substance use disorders (SUDs) reported that the prevalence of Dual Disorders (DDs) is over 65%. DDs pose a major challenge for the Mexican health system, particularly for community-based residential care facilities for SUDs, due to the shortage of certified professionals to diagnose and treat these patients. Moreover, the lack of standardized algorithms for screening for and evaluating DDs to refer patients to specialized services (whether private or public) hinders timely care, delaying the start of integrated treatment. The use of new technologies provides a strategic opportunity for the timely detection of DDs through the development of standardized digital applications for the timely detection of DDs.

**Objective:** To develop an app to screen for DDs, which will contribute to referral to specialized services in keeping with the level of severity of psychiatric and addictive symptomatology, and be suitable for use by community-based residential care facilities for SUDs.

**Method:** The research project was implemented in two stages. Stage 1 involved obtaining the psychometric properties of the Dual Diagnosis Screening Interview (DDSI). Stage 2 consisted of two steps to test the *Beta* version of the app and the quality of version 1.0.

**Results:** The DDS obtained sensitivity and specificity scores above 85%. The app and its algorithm to screen for and refer DDs proved to be efficient and easy to apply with satisfactory community acceptance.

**Conclusion:** The app promises to be a useful screening tool at residential addiction treatment centers.

**Keywords:** dual disorders, substance use disorders, treatment, screening, m-Health, ICTs

## BACKGROUND

### Overview of Dual Disorders

Several clinical research studies have reported high prevalence of Dual Disorders (DDs) or Co-occurring Disorders (the clinical correlation between substance use disorders and other psychiatric disorders) (1–3). Patients with DDs have complex symptomatology that produces a synergistic effect between the two dimensions, increasing the

level of severity and negatively impacting those who suffer them (4). DDs are associated with a higher risk of sexually transmitted infections, suicidality (ideation, behavior and attempts), school and work dropout, legal problems, and greater biopsychosocial deterioration (5).

Despite the reports, there are barriers to accessing adequate treatment. The scientific literature has identified two broad categories to service access: personal characteristics and structural barriers. Personal characteristics include personal vulnerabilities associated with the symptomatology and severity of both psychopathological dimensions, in addition to the motivation to change and personal beliefs associated with preconceived ideas about health professionals, stigma and cultural differences (6). The review identified the following structural barriers: service availability, DD identification, service provision, racial and ethnic disparities and last but not least, insurance policies (6).

All treatment programs must offer standardized screening and assessment services to determine the locus of attention or level of care required by the needs and particularities of each patient (3).

## Screening, Assessment, and Treatment Planning for People With DDs

Screening, assessment, and treatment planning constitute an interrelated process designed to explore, detect, inform, refer, diagnose, and plan the treatment of people with DDs in the best program available according to the needs of each patient. Understanding these three components (screening, assessment, and treatment planning) as an integrated process is key to successful treatment (7).

The screening component is a formal process that determines the likelihood that a patient with SUD will present signs, symptoms, or behaviors associated with other mental disorders or vice versa. Its purpose is not to establish a specific diagnosis, but to recognize the need for an in-depth assessment. The assessment component determines differential diagnoses and identifies other clinical characteristics such as readiness for change, strengths or problematic areas that may affect treatment and rehabilitation, and engages the patient in the treatment. Finally, the treatment planning component integrates treatment programs and interventions for both dimensions. The plan is tailored to the individual needs, readiness to change, preferences, and personal goals of the patient (7).

Despite evidence-based recommendations, not all programs have the same screening, assessment, and treatment services. Likewise, the range of competencies and expertise among health professionals varies enormously. Both aspects are obstacles to undertaking an integrative process. It is therefore essential to implement standardized procedures and tools to screen for and assess DDs according to the *locus* of care of each program (3).

## Digital Tools for Screening Mental Disorders

The advantages of using screening tools include their ease of use and scoring, the limited training required for their administration, and, for well-researched tools, a known level

of reliability and available cut-off scores. One disadvantage of screening instruments is that they sometimes become the only component of the screening process. A second disadvantage is that a routinely administered screening instrument provides little opportunity to establish a connection with the patient. It is important to encourage patients to accept a referral for assessment and treatment if needed (7).

The growth of information and communication technologies in the past decade has spawned a revolution in the detection, assessment and treatment procedures of various medical specialties by promoting the development of multiplatform telehealth (telemedicine) methodologies and tools (e-health), as well as mobile health (m-health) featuring the use of mobile devices (such as smartphones, tablets, laptops and monitoring devices) due to their ease of access, portability, functionality and usability (8, 9).

In the field of mental health, apps have been developed for a range of purposes. Some offer self-directed treatment services and live video conferences for psychoeducation for patients and families, psychiatric and/or psychological treatment (counseling or psychotherapy) in individual or group modalities and self-help groups (10). There are also apps designed to screen for and/or evaluate mental health problems and addictions. These applications can be incorporated into standardized self-report instruments (scales and questionnaires) and/or used with the help of a health professional (structured or semi-structured interviews) (8, 11).

Screening apps generally use standardized instruments to screen for and monitor psychiatric symptoms (such as depression, anxiety, mania, psychosis, impulsivity and self-harm) and substance use (including aspects such as frequency, quantity, severity and craving) (12–15).

There is evidence, however, that self-report/self-monitoring apps for screening are inaccurate in that they fail to provide cut-off points, or use non-standardized instruments. (14, 16). Likewise, they may offer inappropriate recommendations for the real needs of users (potential patients), by over- or under-estimating the actual state of health of the user (10). Moreover, it has been reported that about half the applications found in stores (App Store and Google Play) make claims about their effectiveness, although the evidence they present is based mainly on bibliographic searches with little methodological rigor or on personal involvement in their development (14).

Despite significant progress, the range of apps for DD screening is limited. To our knowledge, the only app for this purpose is the DDSI (Dual Diagnosis Screening Interview). This application is a practical tool for clinicians and based on a structured interview to screen for the following disorders: generalized anxiety, panic attack, agoraphobia, social phobia, specific phobias, posttraumatic stress disorder (PTSD), major depression, persistent depression (dysthymia), mania, psychosis, and attention deficit/hyperactivity disorder (ADHD) (17), but 2 years ago it stopped being available to download from commercial stores.

## Dual Disorders in Mexico

The Mexican public network for the treatment of SUDs and their attendant problems comprises over 400 outpatient and 30

hospitalization units (2). However, as in other Latin American countries, state capacity for dealing with health problems is limited (18), particularly in patients with high levels of symptom severity.

For this reason, in Mexico, about a third of those with SUDs receive treatment at community-based residential care facilities for SUDs. These facilities (totaling over 2,000) are a popular alternative for recovery from addictions since many of them are designed to meet service demand quickly, particularly among patients in a state of substance intoxication with agitated or disruptive behavior. They are located in marginal areas, which makes them more affordable. Their services are much cheaper than private professional services, which most of those affected are unable to afford. They are usually based on the 12-step model of Alcoholics Anonymous (peer-to-peer care), offering treatment of varying lengths ranging from 3 to 12 months (19, 20).

Official reports indicate that about 91% of subjects receiving treatment in these settings are men aged between 18 and 30. Five per cent have used injection drugs, 64% report having shared needles despite being aware of the health risks and at least 2% are living with HIV (21). Other studies have found that about 75% of individuals have shown a lifetime prevalence of DDs (22), while over 60% have done so in the past 30 days (2).

However, despite their strengths, the majority of these community centers face significant constraints due to their limited physical and technological infrastructure, insufficient funds, untrained staff, and lack of standardized screening, assessment and treatment planning procedures and mental health professionals (19, 20).

The scientific literature has widely documented the potential problems faced by non-specialized health personnel when evaluating and treating people with mental health problems and addictions, especially when they lack training and supervision (23–25). In this respect, we inferred that the peer-to-peer care model with untrained staff and a lack of standardized procedures for treating patients with DDs increases the risk of iatrogenic harm, malpractice and negligence (26–28).

Nonetheless, despite their structural limitations and lack of specialized personnel, community-based residential care facilities for SUDs are in high demand for those with DDs. As a result, the Mexican government has made great efforts to regulate services by establishing minimum operating standards (29), and to certify the skills of paraprofessional staff (peers) (30). According to the evidence, it is essential to implement screening services as part of a standardized admissions process. The foregoing is intended to prevent, as far as possible, the presence of malpractice and negligence, and to reduce the risk of iatrogenic harm due to the lack of skills of paraprofessional staff (peers) and the shortage of qualified health personnel to assess and treat patients with DDs.

The aim of this study is to develop an app to screen for DDs that will improve the services offered by community-based residential care facilities for SUDs in Mexico, using an algorithm to detect the degree of severity of psychiatric and addictive symptomatology, and to contribute to the detection, counseling and referral of patients to specialized services.

## METHODS

The research project was implemented in two stages. The purpose of Stage 1 was to obtain the psychometric properties of the Dual Diagnosis Screening Interview (DDSI), and to determine its validity by comparing it to a gold standard such as the Mini International Neuropsychiatric Interview (MINI). Stage 2 consisted of two steps to test the *Beta* version of the app and the quality of version 1.0.

All the study procedures, informed consent, evaluation forms and recruitment materials used were approved by the Ethics and Research Committee of the Ramón de la Fuente Muñiz National Institute of Psychiatry (INPRFM) (No. IC17055.0) and adhered to the recommendations of the World Medical Association, and the Declaration of Helsinki on international good practices for research in human beings.

### Stage 1

#### Design, Sites, and Participants

A cross-sectional study with a convenience sample was implemented at 33 community-based residential SUD treatment facilities in Mexico City. Eligible participants met the following criteria: men and women aged  $\geq 18$  years, who had spent at least seven days in residential treatment to control for the residual effects of recent intoxication, who were literate and had signed the informed consent form. Participants with disabling symptoms of psychosis, mania (MINI) (31) and cognitive impairment (MoCA) (32) were excluded. Data were collected between February and December 2017.

#### Measures

##### *Sociodemographic Data and Substance Use*

This questionnaire is based on the Addiction Severity Index (33), following the recommendations of Mäkelä (34). The sections included sociodemographic data (age, sex, education, marital status, and source of economic income), substance use (impact substance, age of onset, years of use, use in the past 30 days, route of administration, and days of abstinence) and health service use (type of health service, health issue, and professional help).

##### *Mini International Neuropsychiatric Interview (MINI)*

This structured interview is used for the rapid, accurate diagnosis of psychiatric disorders according to DSM-IV criteria (31). An adapted, Spanish-language version was used. For this study, the following lifetime diagnoses from the MINI version were used in the analyses: mania/hypomania episode, psychotic disorder, depressive disorder (major episode or dysthymia), suicide attempt, alcohol use disorder, drug use disorder, PTSD, anxiety disorders (panic disorder, general anxiety disorder, specific or social phobia), antisocial personality disorder, and adult ADHD.

##### *Dual Diagnosis Screening Interview (DDSI)*

This brief interview evaluates the most frequent and severe psychiatric disorders found in substance users: depression, dysthymia, mania, psychosis, panic disorder, agoraphobia, simple phobia, social phobia, generalized anxiety disorder, PTSD, and ADHD, and lasts 13–20 min. The DDSI has shown a sensitivity of  $>80\%$ , and a specificity of  $>82\%$  for the identification of lifetime

disorders such as depression, mania, psychosis, social phobia and specific phobia (17).

## Procedures

### Site Selection

The 33 selected facilities all complied with current Mexican regulations for addiction treatment (NOM-028-SSA2-2009), were willing to facilitate the study procedures, and were equipped with adequate facilities to ensure patient privacy during study assessments.

### Field Team, Training, and Certification

The field team comprised psychologists, six interviewers with undergraduate studies, and two supervisors with graduate studies in clinical psychology. All members of the clinical team had been trained and certified in the procedures and evaluation of the study. Training consisted of a centralized five-day program, comprising theoretical and practical seminars. Certification was undertaken through a role-play exercise. Training and certification were provided by the research team.

### Recruitment and Enrollment of Participants

Potential participants were recruited through a group discussion in which they were informed of the characteristics of the study. Interested participants underwent an individual informed consent and signing process, with an interviewer providing detailed information on the study, its risks and benefits, and subjects' rights. If they agreed to participate, subjects proceeded to sign the informed consent form and the interview began to be administered (MINI and DDSI), which took ~2 hours. The interval between the administration of both instruments ranged from 3 to 5 days.

### Statistical Analysis

The groups with and without DD were formed based on the presence of a psychiatric disorder identified by the DDSI. Univariate analyses were performed for demographic variables (sex, age, education, marital status) and substance use (in the past 30 days), chi-square ( $\chi^2$ ) for categorical variables and Student's *t* for numerical variables. DDSI efficiency (sensitivity, specificity, positive and negative predictive values) of the predictive variable in relation to the MINI was calculated and tested for statistical significance using a  $2 \times 2$  Chi-Square test. Since missing data were assumed to be completely random (MCAR), we used multiple imputation for the missing data with the R statistical package. A significant value of  $p < 0.05$  was used. All statistical analyses were performed using SPSS v23.

## Stage 2

Stage 2, comprising two steps, was implemented between January 2018 and December 2019, to test and improve the components of the *Beta* version and test the quality of the 1.0 version of the app.

### Step 1

After the psychometric properties of the DDSI had been obtained, the *Beta* version of the App was developed, which comprised basic functions and components such as patient file

control, personal data, and substance use pattern forms, DDSI, and results reports.

To test the functionality and usability of the *Beta* version, the field team administered just over 60 interviews to identify possible errors and improvements. SCRUM (35) methodology was used to improve the interaction between the teams [field, research and Information and Communication Technologies (ICT)]. Accordingly, the necessary minimum was documented through user stories, and user acceptance tests (UAT) were much more dynamic, with rapid feedback for error correction.

To identify possible improvements to the procedures and components of the *Beta* version, working meetings were held between teams (field, research, and ICT). Results were collected at the end of the *Beta* version test, and it was deemed fit to generate usability reports and errors. Taking this as process input, activities were classified as error debugging, usability improvement, and component modification or the addition of new components.

Through the usability testimonials of the field, research, and ICT teams, needs for improvement were grouped into four categories: ability to adapt (enables the user to understand whether the software is suitable for their needs); learning capacity (enables the user to learn how to use it quickly and intuitively). Ability to be used (enables the user to operate and control the software with ease), and aesthetics of the user interface (is pleasing and satisfies the user's interaction with the application and visual elements are easy to locate).

Likewise, during the collaborative working sessions, the need to modify certain features and incorporate new ones was detected. To this end, clinical experts outside the project were consulted to validate and strengthen improvements. Modifications and additions of components were made according to the constraints of the project (time, personnel, and funds).

### Step 2

To test the quality of version 1.0 of the app., the Mobile App Rating Scale (MARS) (36) was used in a group of 63 addiction and mental health professionals. This scale uses the mean scores of the engagement, functionality, aesthetics, information and subjectivity subscales, and MARS is scored according to the overall mean app quality score. MARS's psychometric properties have shown excellent internal consistency (Cronbach alpha = 0.90) with the total score and internal consistencies of the subscales also being very high (Cronbach alpha = 0.80–0.89, median 0.85) (36).

To achieve this goal, 100 addiction and mental health professionals from a state treatment agency were invited to participate by email. The invitation explained the dynamics of participation, which involved (1) participating in a video conference (ZOOM system) to explain the app and its usefulness. (2) Additionally, participants with Android devices were invited to participate in a demonstration of the installation and use of the app. (3) Android device users received an email with a file to install the app (*pd-s\_v1.apk*), an installation video and a link to participate in the MARS online survey (using the SurveyMonkey system). The email also stated that participation was voluntary and anonymous, and that informed consent would be requested.

**TABLE 1** | Participants' characteristics ( $n = 213$ ).

	With dual disorder $n = 149$	Without dual disorder $n = 64$	Total $n = 213$	Statistical differences	$p$
	$\bar{x}(sd)/n(\%)$	$\bar{x}(sd)/n(\%)$	$\bar{x}(sd)/n(\%)$		
Age	30.20 (10.99)	33.15 (11.21)	31.09 (11.12)	$t_{(211)} = 4.43^*$	<b>0.007</b>
Sex				$\chi_{(1)}^2 = 2.42$	0.146
Men	139 (93.3)	63 (98.4)	202 (94.8)		
Women	10 (6.7)	1 (1.6)	11 (5.2)		
Educational attainment				$\chi_{(3)}^2 = 7.63$	0.070
None	0 (0)	3 (4.7)	3 (1.4)		
Elementary school	15 (10.1)	7 (10.9)	22 (10.3)		
High school	119 (79.9)	46 (71.9)	165 (77.5)		
College	15 (10.1)	8 (12.5)	23 (10.8)		
Marital status				$\chi_{(2)}^2 = 6.81^*$	<b>0.026</b>
Single	79 (53.4)	22 (34.4)	101 (47.6)		
Married/living together	34 (23.0)	23 (35.9)	57 (26.9)		
Widowed/Divorced/Separated	35 (23.6)	19 (29.7)	54 (25.5)		
Main source of economic income				$\chi_{(4)}^2 = 4.16$	0.112
Employment	65 (43.6)	35 (54.7)	100 (46.9)		
Self-employment	5 (3.4)	3 (4.7)	8 (3.8)		
Family support	58 (38.9)	19 (29.7)	77 (36.2)		
Other	19 (12.8)	5 (7.8)	24 (11.3)		
None	2 (1.3)	2 (3.1)	4 (1.9)		
Impact substance				$\chi_{(4)}^2 = 9.22^*$	<b>0.033</b>
Alcohol	51 (34.2)	24 (37.5)	75 (35.2)		
Cocaine	48 (32.2)	22 (34.5)	70 (32.9)		
Marijuana	17 (11.4)	11 (17.2)	28 (13.1)		
Inhalants	27 (18.1)	6 (9.4)	33 (15.5)		
Other	6 (4.0)	1 (1.6)	7 (3.3)		
Use in past 30 days					
Alcohol	13.29 (11.7)	10.13 (10.37)	12.36 (11.39)	$t_{(198)} = 1.79$	0.070
Cocaine	11.17 (12.25)	10.07 (12.61)	10.87 (12.32)	$t_{(165)} = 0.51$	0.435
Marijuana	13.41 (13.75)	9.74 (12.66)	12.42 (13.53)	$t_{(158)} = 0.15$	0.732
Inhalants	9.06 (12.15)	7.66 (11.88)	8.77 (12.06)	$t_{(113)} = 0.50$	0.360
Other	5.27 (10.01)	7.66 (12.15)	5.74 (10.42)	$t_{(90)} = -0.87$	0.404

\* $p < 0.05$ . Bold indicates statistically significant values.

## RESULTS

### Stage 1

A total of 213 participants (94.8 % male), with an average age of 31.09 ( $sd = 11.12$ ) years, the majority of whom had completed junior and senior high school (87.8%), and nearly half of whom (47.6%) were single, (see **Table 1**) were selected. The group with DDs reported a lower age (30.20 years), had completed junior or senior high school (90%) and were mostly single (53.4%) in comparison with the group without dual disorders. In both groups, the main source of income was subordinate work followed by independent work, with the only statistically significant difference found between the groups being marital status ( $\chi_{(2)}^2 = 6.81$ ,  $p = 0.026$ ). As for substance use, the substance with the greatest impact on participants with DDs was alcohol (34.2%), followed by cocaine (32.2%) and inhalants (18.1%), whereas in the group without DDs, the substance with the greatest impact was alcohol (37.5%), followed by cocaine (34.5%). No statistically significant differences were

found between the two groups for use in the past month (see **Table 1**).

### Psychometric Properties of DDSI

According to the results, the most prevalent diagnoses were depression (35.2%), PTSD (22.5%) and ADHD (21.1%). Additionally, the psychometric properties yielded sensitivity scores ranging from 0.81 for PTSD and psychosis to 0.88 for GAD, mania, and social phobia. Specificity scores were 0.85 or higher for most of the disorders screened. Finally, negative predictive values were  $< 0.93$  whereas positive predictive values were  $< 0.54$  for most of the disorders screened (see **Table 2**).

### Stage 2

#### Step 1

The working meetings between the field, research and IT teams resulted in a backlog report. This report contains a record of all the errors (bugs) and navigation issues detected, together with

**TABLE 2** | Psychometrics properties of DDSI ( $n = 213$ ).

	Sensitivity	Specificity	PPV	NPV	TN	FN	TP	FP	Prevalence %
Depression	0.84 (0.75–0.92)	0.77 (0.69–0.84)	0.66 (0.56–0.76)	0.89 (0.83–0.95)	121	17	63	12	35.2
GAD	0.88 (0.74–0.91)	0.85 (0.79–0.90)	0.45 (0.30–0.59)	0.98 (0.95–0.98)	159	28	23	3	12.3
PTSD	0.81 (0.69–0.93)	0.75 (0.68–0.82)	0.48 (0.37–0.60)	0.93 (0.88–0.97)	124	41	39	9	22.5
Social Phobia	0.88 (0.69–0.94)	0.85 (0.80–0.90)	0.34 (0.19–0.50)	0.98 (0.96–0.99)	168	28	15	2	7.9
ADHD	0.86 (0.75–0.97)	0.89 (0.83–0.93)	0.67 (0.54–0.80)	0.96 (0.92–0.99)	149	19	39	6	21.1
PDD	0.87 (0.68–0.91)	0.92 (0.87–0.95)	0.46 (0.27–0.66)	0.98 (0.97–0.99)	181	16	14	2	7.6
Psychosis	0.81 (0.67–0.95)	0.86 (0.80–0.91)	0.54 (0.40–0.68)	0.95 (0.92–0.99)	151	25	30	7	17.3
Mania	0.88 (0.62–0.93)	0.93 (0.89–0.97)	0.38 (0.15–0.61)	0.99 (0.98–0.99)	189	13	8	1	4.2

GAD, Generalized anxiety disorder; PTSD, Posttraumatic stress disorder; ADHD, Attention Deficit / Hyperactivity Disorder; PDD, Persistent depression disorder; PPV, Positive predictive value; NPV: Negative predictive value; TN, True negative; FN, False negative; TP, True positive; FP, False positive.

the need to modify existing components or incorporate new ones, which was prioritized by the field and research team.

Some of these errors (bugs) were redundant functions, elaborate code, and runtime errors. As for usability improvement, the backlog report documented certain navigation issues between screens or regarding the arrangement of elements and the inconsistent look and feel of components, and the need to modify them or incorporate new ones (see **Table 3**). As a result of all the improvements implemented, the 1.0 version was created, with better performance in intuitive/ergonomic navigation (see **Figure 1**) than the *Beta* version.

The most important component of the app is the traffic light algorithm designed to contribute to the rapid identification of probable psychiatric and substance use disorders, while providing the user with recommendations for assessment and referral to specialized treatment.

The algorithm assumes that screening is being carried out at a community residential treatment center where there are no specialized mental health professionals equipped to assess and treat patients with probable mental disorders other than SUDs.

Accordingly, the purpose of the algorithm is to identify possible mental disorders and prioritize assessment and treatment needs, distinguishing between conditions that constitute a genuine psychiatric emergency (psychosis, mania and suicide) from those that do not (see **Figure 2**) (39).

The algorithm generates three types of recommendations, based on a traffic light system:

#### Red Light

“The patient has probable psychiatric disorders co-occurring with substance use. This condition poses a **medium to high risk**. The recommendation is to refer the patient as a priority to a specialized institution for assessment and treatment”.

#### Yellow Light

“The patient has probable psychiatric disorders co-occurring with substance use. This condition represents a **low to medium risk**. The recommendation is to refer the patient to a mental health specialist for assessment and treatment”.

#### Green Light

“The patient does not have probable mental disorders co-occurring with substance use. This condition **does not represent**

**an apparent risk**. The recommendation is to continue with standard treatment”.

### Step 2

A total of 100 addiction and mental health professionals were invited to participate, 85 of which agreed to participate in the videoconference and only 63 of which answered the survey. The average age of the health professionals was 39.71 years, most of whom were women. A total of 50.8% were doctors, 39.7% were psychologists and 9.5% were from other professions. Seventy-three per cent reported having completed postgraduate studies. Regarding the number of years of experience in mental health treatment, it was observed that the majority had over 6 years' experience (63.4%). Likewise, according to the MARS results, the app obtained a total quality score of 4.3. Moreover, it was observed that subjects with postgraduate studies, doctors, and those with fewer than 10 years' experience in mental health rated the app slightly lower (see **Table 4**).

## DISCUSSION

The objective of the present study was to develop an algorithm to screen for DDs, which helps detect SUDs, counsel patients and refer them to specialized services according to the level of severity of their psychiatric and addictive symptomatology, through the use of an app that will be easy to use and adopt in Community-Based Residential Care Facilities for SUDs. To this end, the specificity of the DDSI was obtained as well as its concurrent validity against the gold standard (MINI). Likewise, a *Beta* version of the App was tested, which improved version 1.0 in terms of functionality, usability, and aesthetics. It also permitted the incorporation of components to increase the detection and measurement of other psychopathological aspects, as well as making clinical decision-making more efficient by incorporating the traffic light algorithm. Finally, the MARS scale was used to enable the quality of the app to be evaluated by mental health and addiction professionals, who evaluated it positively in the five dimensions (commitment, functionality, aesthetics, information, and subjectivity).

The results obtained during Stage 1 indicate that the sensitivity and specificity scores of the DDSI were similar to those of the original study (17), where they are above 80%. Conversely,

**TABLE 3** | Component improvements.**Modification of components between versions**

<b>Beta version</b>	<b>1.0 version</b>
<b>Patient file control</b> - Record registration	<b>Patient file control</b> - Record registration - Edit registration - Delete registration - View results report - Export Data base
<b>Personal data</b> - Sociodemographic data - Service use	<b>Personal data</b> - Sociodemographic data - Personal medical history - Personal psychopathology history - History of previous treatments
<b>Substance use pattern</b> - Age of onset - Lifetime use - Use in past 30 days - Longer abstinence time - Administration route	<b>Substance use pattern</b> - Age of onset - Lifetime use - Use in past 30 days - Longer abstinence time - Administration route
<b>Screening instruments</b> - Dual Disorder Screening	<b>Screening instruments</b> - Dual Disorder Screening* - Suicide Screening** - Alcohol Use Disorder Screening*** - Substance Use Disorder Screening****
<b>Results report</b> - Visualization on mobile device	<b>Results report</b> - Visualization on mobile device - Generation of results report in PDF file - Includes: Personal data, Substance use pattern, results of screenings, algorithm of recommendations, disclaimer, notes of evaluator and list of public institutions for assessment and treatment.

New component in 1.0 version

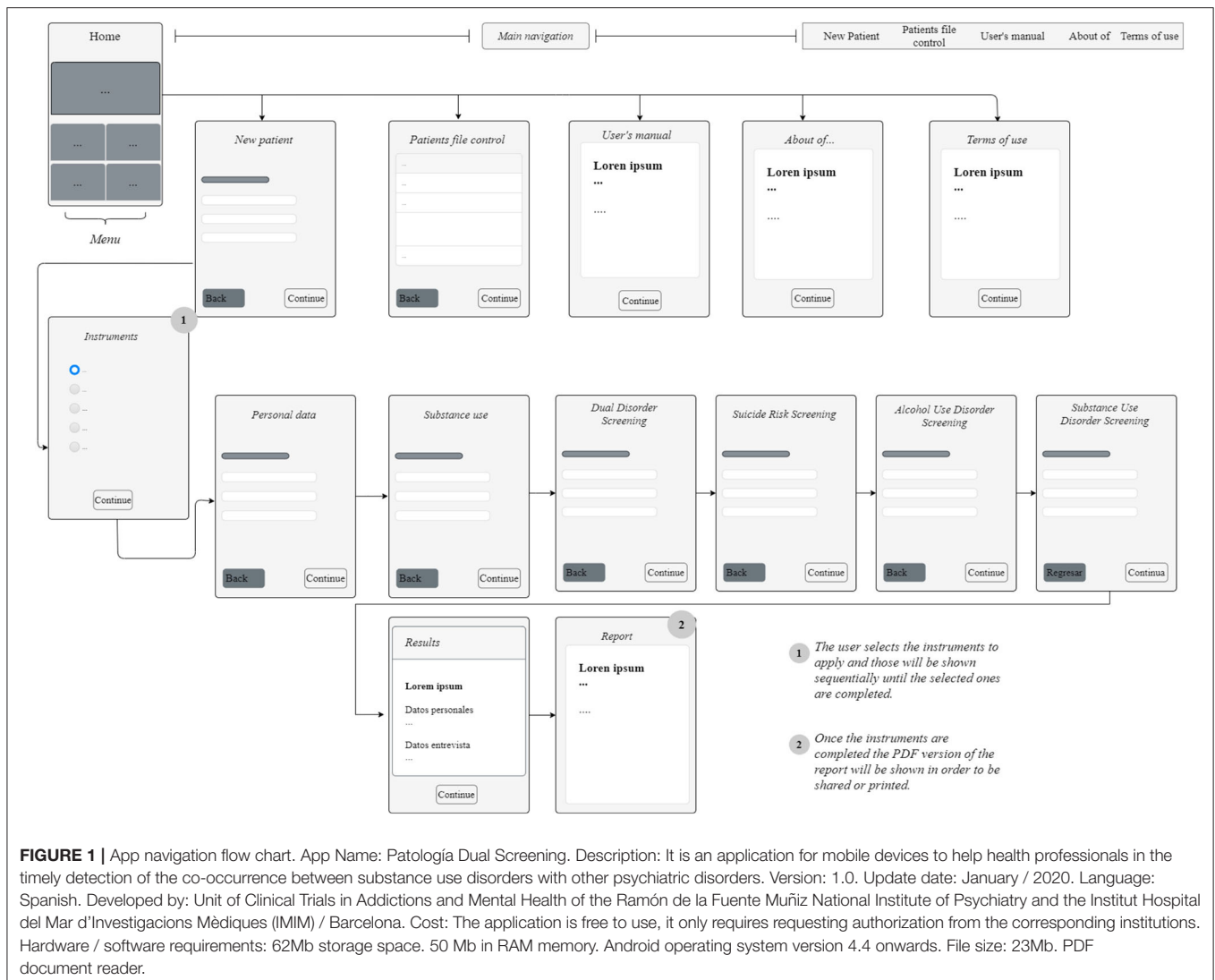
- **Algorithm of recommendations:** Offers patients recommendations for assessment and referral to specialized treatment.
- **User's manual:** The manual provides information on the requirements of the System, installation, navigation between screens, application interactions of the algorithm and data dictionary.
- **Terms of use:** These provide information on the disclaimer.
- **About:** This provides information on the research and development teams, institutions, funding, and endorsements.
- **Data base export:** This allows the export in CSV format of the database of evaluated patients stored in the device. The database includes all the variables of the forms administered.

*Dual Diagnosis Screening Interview (DDSI) \*(17); Suicide \*\*(31); Short Alcohol Dependence Data Questionnaire (SADD) \*\*\*(37); Drug Abuse Screening Test (DAST) \*\*\*\* (38).*

negative predictive values were higher over 90%, whereas positive predictive values ranged from 34 to 67%. These scores may be due to the fact that positive predictive values depend largely on the prevalence of a set condition (and to a lesser effect on specificity and sensitivity) as has been reported in various studies where low VPP have been obtained (40, 41). For this reason, it is estimated that when case prevalence increases, false positives fall, which makes VPPs increase. Future studies should be conducted on specific populations to determine whether VPPs increase with case numbers and do not depend on DDSI properties (42), although it may also be due to the symptoms of the addiction itself masking co-occurring psychiatric symptomatology (42). However, the DDSI can be said to be a valid, reliable screening tool suitable for use in clinical settings for the detection of possible mental disorders in people with substance use.

Additionally, results tally with those obtained in previous studies conducted in Mexico and Spain in residential and outpatient treatment centers. These data underline the fact that DD patients are the rule rather than the exception, with a prevalence of over 60% in the past 30 days. Most of them are polydrug users, with depression, anxiety, PTSD, psychotic disorders and ADHD being the most prevalent disorders (2, 17, 43, 44).

The procedure followed during step 1 resulted in version 1.0 of the App, which is significantly better than the *Beta* version, in that it eliminated recurring errors (bugs), allowing greater functionality and usability. It significantly improved the aesthetics of the interface and navigation between screens, making it more intuitive and cognitively ergonomic. In addition to the DDSI, key clinical scales (with validity, reliability, and cut-off points) were incorporated to screen for suicidality and



drug and alcohol dependence (see **Table 3**). However, the most important feature is the inclusion of a traffic light algorithm that prioritizes the severity of the symptomatology assessed and provides recommendations according to the color of the traffic light (see **Figure 1**). Finally, this algorithm is linked to a detailed report of the screening process that facilitates feedback to the patient.

According to the results, it is extremely likely that the implementation of a screening service within community addiction centers in Mexico will allow non-specialized health personnel and para-professional counselors (peers) to identify, guide and, if necessary, refer patients for evaluation and treatment at a specialized public or private institution and thereby improve clinical decision-making for the benefit of patients, reducing the likelihood of negligence, malpractice and therefore iatrogenesis.

To ensure proper use of the app, institutions interested in implementing a screening service may request a 10-h in-person training package with three modules: (1) the theoretical framework of DDs, (2) basic aspects and use of the Dual

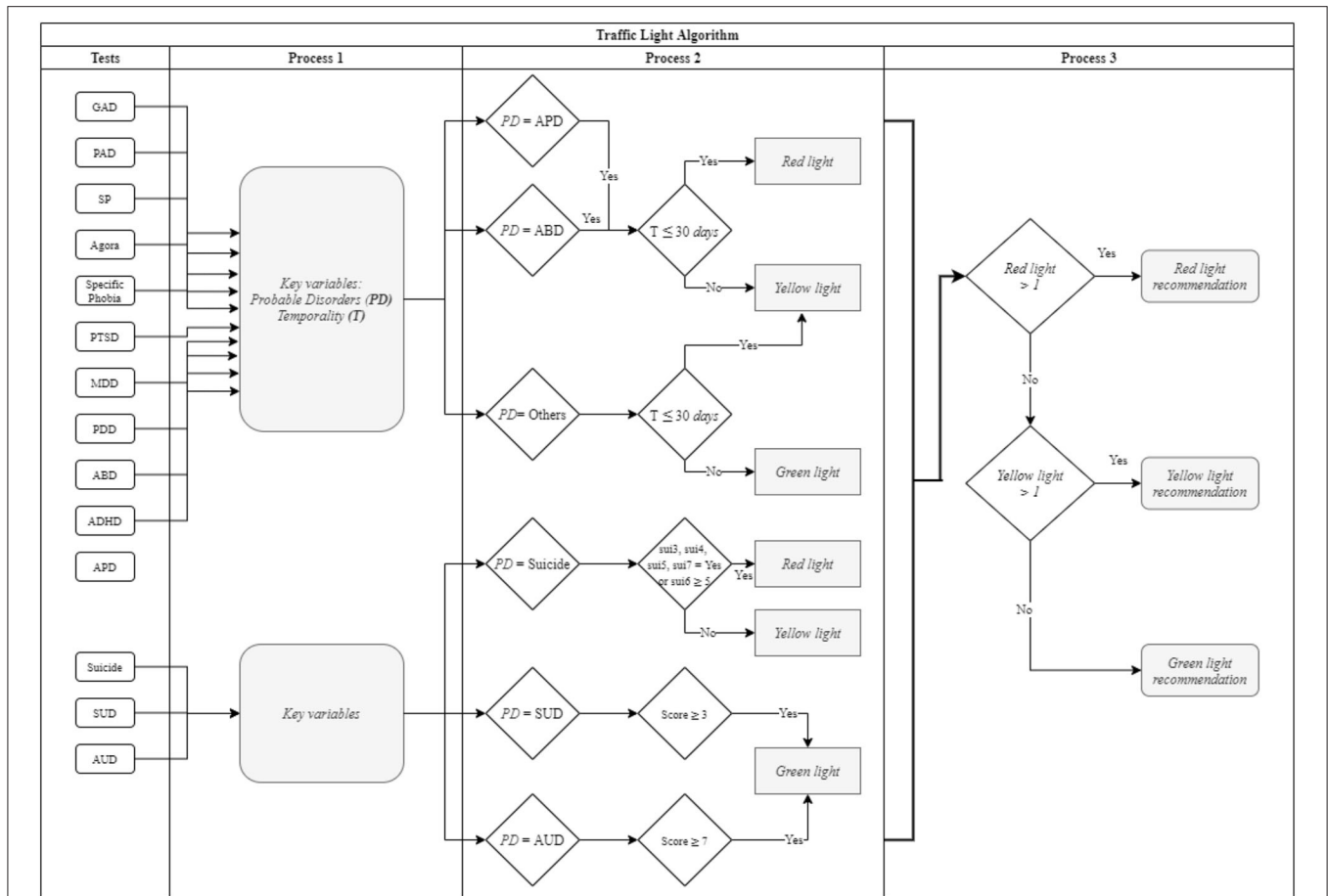
Disorders Screening app and, (3) modeling and role play. This training will be available online shortly to facilitate access and achieve greater impact.

It should be noted that use of the Dual Disorders Screening app is not intended to replace professional psychiatric or psychological assessment, or the recommendations clinicians usually provide for patients. Accordingly, sensible, responsible use of the app is recommended, while communication with the treating psychiatrist should always be maintained.

## Limitations

An obvious limitation is that the Dual Disorders Screening app was only developed for Android devices. However, it is important to mention that this decision was made because the Android operating system makes it possible to install programs unavailable at virtual stores such as Google Play, in addition to the fact that Android devices are significantly cheaper than those operating with iOS.





**FIGURE 2 |** Algorithm flow chart. Traffic Light Algorithm: IF probable APD, ABD, Suicide (ideation = true OR planning = true OR attempt = true OR intentionality  $\geq 5$ )  $\leq 30$  days, THEN red light recommendation ELSE IF probable APD, ABD, Suicide (ideation = true OR planning = true OR attempt = true OR intentionality  $\leq 4$  OR lifetime attempt)  $> 30$  days THEN yellow light recommendation, ELSE probable APD, ABD, Suicide = false AND Others  $> 30$  days AND SUD  $\geq 3$  AND AUD  $\geq 7$  THEN green light recommendation.

**TABLE 4 |** Comparisons between MARS scores and demographic variables ( $n = 63$ ).

	Engagement	Functionality	Aesthetics	Information	Subjectivity	Total
	$\bar{x}(sd)$	$\bar{x}(sd)$	$\bar{x}(sd)$	$\bar{x}(sd)$	$\bar{x}(sd)$	$\bar{x}(sd)$
Education						
Undergraduate	4.3 (0.78)	4.4 (0.59)	4.1 (0.75)	4.2 (0.61)	3.6 (0.69)	4.2 (0.63)
Graduate	4.1 (0.69)	4.2 (0.54)	4.1(6.9)	4.1 (0.76)	3.4 (0.67)	4.1 (0.59)
Profession						
Psychology	4.3 (0.63)	4.5 (0.36)	4.2 (0.57)	4.3 (0.59)	3.7 (0.68)	4.3 (0.46)
Medicine	3.9 (0.78)	4.1 (0.63)	3.9 (0.82)	3.9 (0.82)	3.3 (0.69)	3.9 (0.68)
Years of experience in mental health						
0–5 years	4.1 (0.79)	4.2 (0.65)	4.1 (0.81)	4.1 (0.81)	3.3 (0.73)	4.1 (0.70)
6–10 years	4.1 (0.73)	4.1 (0.54)	3.8 (0.68)	4.0 (0.73)	3.3 (0.62)	4.0 (0.61)
+ 10 years	4.2 (0.63)	4.5 (0.34)	4.2 (0.55)	4.3 (0.61)	3.7 (0.63)	4.3 (0.44)

Although the Dual Disorders Screening app is designed to be a practical tool to be used and adopted by community residential centers for addiction care in Mexico, it is understood that the app alone does not suffice. Accordingly, the development of a more robust electronic platform offering a broader range of services and products could serve as an extremely useful complement.

This platform should have e-health services such as electronic medical records compatible with RIS/PACS and LIS applications. It should also have telemedicine services for the distance training of community physicians and psychologists in the treatment of patients with DDs, as well as programs incorporating case supervision by psychiatrists and psychologists specializing in

DDs. Finally, there should be m-health-based support tools for patients and community professionals.

## CONCLUSION

The Dual Disorders Screening app is a reliable tool for the detection of DDs, as well as the measurement of other clinical aspects associated with this population. It is hoped that the incorporation of the traffic light algorithm will enhance the clinical decision-making of personnel at community residential centers for addiction care throughout the country, thereby contributing to the improvement of public policy on addiction treatment in Mexico.

## DATA AVAILABILITY STATEMENT

The original contributions presented in the study are included in the article/**Supplementary Material**, further inquiries can be directed to the corresponding author.

## ETHICS STATEMENT

The studies involving human participants were reviewed and approved by Ethics and Research Committee of the Ramón de la Fuente Muñiz National Institute of Psychiatry (INPRFM) (No. IC17055.0). The patients/participants provided their written informed consent to participate in this study.

## AUTHOR CONTRIBUTIONS

RM-N and MT were the principal investigators, they designed, developed and implemented of the research project, and conduct the manuscript. AT-F and JM-P were the implementation coordinators. RS-D and AP-L were supervisors during the field work and contribute for the statistical analysis. EM-DL, RS-A,

and NS made significant contributions as an experts in Dual Disorders for the elaboration of the manuscript. All authors contributed to the article and approved the submitted version.

## FUNDING

In his role as principal investigator, RM-N was awarded (grant number: IAPA/C-32/2016) to implement this research project by the Institute for the Care and Prevention of Addictions in Mexico City (*Spanish acronym IAPA*). The sponsor had no role in the study design, collection, analysis, or interpretation of the data, writing the manuscript, or the decision to submit this paper for publication. During the implementation of the project and the development of this manuscript, AT-F obtained a (doctoral grant #414858), RS-D was awarded a (doctoral grant #473227) and AP-L received a (doctoral grant #449063) from the National Council of Science and Technology (*Spanish acronym CONACYT*).

## ACKNOWLEDGMENTS

The authors are grateful to the 33 community-based residential facilities for substance use treatment in Mexico City for facilitating the undertaking of the study, as well as the research assistants who participated in the field work. The authors would also like to thank Miltón Rubio Lorenzana for his valuable contributions, and the *Sociedad Española de Patología Dual (SEPD)* and the World Association on Dual Disorders (WADD) for endorsing the Patología Dual Screening app.

## SUPPLEMENTARY MATERIAL

The Supplementary Material for this article can be found online at: <https://www.frontiersin.org/articles/10.3389/fpsy.2021.697598/full#supplementary-material>

## REFERENCES

- Arias F, Szerman N, Vega P, Mesias B, Basurte I, Morant C, et al. Madrid study on the prevalence and characteristics of outpatients with dual pathology in community mental health and substance misuse services. *Adicciones*. (2013) 25:118–27.
- Marín-Navarrete R, Medina-Mora ME, Horigian VE, Salloum IM, Villalobos-Gallegos L, Fernández-Mondragón J. Co-occurring disorders: a challenge for mexican community-based residential care facilities for substance use. *J Dual Diagn*. (2016) 12:261–70. doi: 10.1080/15504263.2016.1220207
- Substance Abuse and Mental Health Services Administration. *Substance Use Disorder Treatment for People With Co-Occurring Disorders. Treatment Improvement Protocol (TIP) Series, No. 42*. SAMHSA Publication No. PEP20-02-01-004. Rockville, MD: Substance Abuse and Mental Health Services Administration (2020). p. 1–12.
- Villalobos-Gallegos L, Marín-Navarrete R, Roncero C, González-Cantú H. Latent class profile of psychiatric symptoms and treatment utilization in a sample of patients with co-occurring disorders. *Rev Bras Psiquiatr*. (2017) 39:286–92. doi: 10.1590/1516-4446-2016-1972
- Alfonzo-Bello L, Szerman N, Marín-Navarrete R, Arribas-Ibar E, Pérez-Lopez A, Babín F, et al. Ibero-American initiative for dual disorders to improve public treatment programs. *Salud Ment*. (2017) 40:249–55. doi: 10.17711/SM.0185-3325.2017.032
- Priester MA, Browne T, Iachini A, Clone S, DeHart D, Seay KD. Treatment access barriers and disparities among individuals with co-occurring mental health and substance use disorders: an integrative literature review. *J Subst Abuse Treat*. (2016) 61:47–59. doi: 10.1016/j.jsat.2015.09.006
- Substance Abuse and Mental Health Services Administration (SAMHSA), Center for Substance Abuse Treatment (CSAT). Screening, Assessment, and Treatment Planning for Persons With Co-Occurring Disorders. COCE Overview Paper 2. DHHS Publication No. (SMA) 06-4164. (2006).
- Areán PA, Ly KH, Andersson G. Mobile technology for mental health assessment. *Dialogues Clin Neurosci*. 2016 18:163–9. doi: 10.31887/DCNS.2016.18.2/parean
- World Health Organization. *Global Diffusion of eHealth: Making Universal Health Coverage Achievable. Report of the Third Global Survey on eHealth*. Geneva: World Health Organization (2016).
- Tofighi B, Chemi C, Ruiz-Valcarcel J, Hein P, Hu L. Smartphone apps targeting alcohol and illicit substance use: Systematic search in in commercial app stores and critical content analysis. *J Med Internet Res*. (2019) 21:e11831. doi: 10.2196/11831
- Swendsen J. Contributions of mobile technologies to addiction research. *Dialogues Clin Neurosci*. (2016) 18:213–21. doi: 10.31887/DCNS.2016.18.2/jswendsen
- Satre DD, Ly K, Wamsley M, Curtis A, Satterfield J. A digital tool to promote alcohol and drug use screening, brief intervention, and referral to treatment

- skill translation: a mobile app development and randomized controlled trial protocol. *JMIR Res Protoc.* (2017) 6:e55. doi: 10.2196/resprot.7070
13. Ricketts S, Nguyen TNB, Narasimhan V. Screening for depression in pregnancy—there's an app for that! *Ann Fam Med.* (2019) 17:275. doi: 10.1370/afm.2388
  14. Larsen ME, Huckvale K, Nicholas J, Torous J, Birrell L, Li E, et al. Using science to sell apps: Evaluation of mental health app store quality claims. *NPJ Digit Med.* (2019) 2:1–6. doi: 10.1038/s41746-019-0093-1
  15. Gajecki M, Berman AH, Sinadinovic K, Rosendahl I, Andersson C. Mobile phone brief intervention applications for risky alcohol use among university students: A randomized controlled study. *Addict Sci Clin Pract.* (2014) 9:11. doi: 10.1186/1940-0640-9-11
  16. Penzenstadler L, Chatton A, Van Singer M, Khazaal Y. Quality of smartphone apps related to alcohol use disorder. *Eur Addict Res.* (2016) 22:329–38. doi: 10.1159/000449097
  17. Mestre-Pintó JI, Domingo-Salvany A, Martín-Santos R, Torrens M. Dual diagnosis screening interview to identify psychiatric comorbidity in substance users: Development and validation of a brief instrument. *Eur Addict Res.* (2013) 20:41–8. doi: 10.1159/000351519
  18. Marín-Navarrete R, Medina-Mora ME, Pérez-López A, Horigian VE. Development and evaluation of addiction treatment programs in Latin America. *Curr Opin Psychiatry.* (2018) 31:306–14. doi: 10.1097/YCO.0000000000000434
  19. Marín-Navarrete R, Eliosa-Hernández A, Lozano-Verduzco I, La Fuente CF De, Turnbull B, Tena-Suck A. Estudio sobre la experiencia de hombres atendidos en centros residenciales de ayuda mutua para la atención de las adicciones. *Salud Ment.* (2013) 36:393–402. doi: 10.17711/SM.0185-3325.2013.049
  20. Pagano A, García V, Recarte C, Lee JP. Sociopolitical contexts for addiction recovery: Anexos in US Latino communities. *Int J Drug Policy.* (2016) 37:52–9. doi: 10.1016/j.drugpo.2016.08.002
  21. Comisión Nacional Contra las Adicciones (CONADIC), Centro Nacional para la Prevención y el Control de las Adicciones (CENADIC), Comisión Interamericana para el Control del Abuso de Drogas (CICAD). Diagnóstico Nacional de Servicios de Tratamiento Residencial de las Adicciones: Perfil del Recurso Humano vinculado al Tratamiento de Personas con Problemas Relacionados al Abuso y Dependencia a Drogas y Perfil del Usuario. Mexico City: Comisión Nacional Contra las Adicciones (2011).
  22. Marín-Navarrete R, Benjet C, Borges G, Eliosa-Hernández A, Nanni-Alvarado R, Ayala-Ledesma M, et al. Comorbilidad de los trastornos por consumo de sustancias con otros trastornos psiquiátricos en Centros Residenciales de Ayuda-Mutua para la Atención de las Adicciones. *Salud Ment.* (2013) 36:471–9. doi: 10.17711/SM.0185-3325.2013.057
  23. Nash L, Tennant C, Walton M. The psychological impact of complaints and negligence suits on doctors. *Australas Psychiatry.* (2004) 12:278–81. doi: 10.1080/j.1039-8562.2004.02079.x
  24. Shield T, Campbell S, Rogers A, Worrall A, Chew-Graham C, Gask L. Quality indicators for primary care mental health services. *Qual Saf Heal Care.* (2003) 12:100–6. doi: 10.1136/qhc.12.2.100
  25. Parry GD, Crawford MJ, Duggan C. Iatrogenic harm from psychological therapies—time to move on. *Br J Psychiatry.* (2016) 208:210–2. doi: 10.1192/bjp.bp.115.163618
  26. Fishbain DA, Lewis JE, Gao J. Medical malpractice allegations of iatrogenic addiction in chronic opioid analgesic therapy: forensic case reports. *Pain Med.* (2010) 11:1537–45. doi: 10.1111/j.1526-4637.2010.00938.x
  27. Rees C. Iatrogenic psychosocial harm. *Arch Dis Child.* (2012) 97:440–6. doi: 10.1136/archdischild-2011-300362
  28. Fava GA, Rafanelli C. Iatrogenic factors in psychopathology. *Psychother Psychosom.* (2019) 88:129–40. doi: 10.1159/000500151
  29. Secretaría de Salud (SSA). Lineamientos para el reconocimiento y ratificación de establecimientos residenciales de tratamiento de adicciones 2019-2020. México. (2019). p. 16.
  30. Secretaría de Salud (SSA). *Estándar Mexicano de competencias de la consejería en adicciones México: Centro Nacional para la Prevención y Control de las Adicciones.* México: Secretaría de Salud. (2014).
  31. Lecrubier Y, Sheehan D, Weiller E, Amorim P, Bonora I, Harnett Sheehan K, et al. The Mini International Neuropsychiatric Interview (MINI). A short diagnostic structured interview: reliability and validity according to the CIDI. *Eur Psychiatry.* (1997) 12:224–31. doi: 10.1016/S0924-9338(97)83296-8
  32. Nasreddine ZS, Phillips NA, Bédirian V, Charbonneau S, Whitehead V, Collin I, et al. The montreal cognitive assessment, MoCA: A brief screening tool for mild cognitive impairment. *J Am Geriatr Soc.* (2005) 53:695–9. doi: 10.1111/j.1532-5415.2005.53221.x
  33. McLellan AT, Cacciola JC, Alterman AI, Rikoon SH, Carise D. The addiction severity index at 25: origins, contributions and transitions. *Am J Addict.* (2006) 15:113–24. doi: 10.1080/10550490500528316
  34. Mäkelä K. Studies of the reliability and validity of the Addiction Severity Index. *Addiction.* (2004) 99:398–410. doi: 10.1111/j.1360-0443.2003.00665.x
  35. Cohn M. Succeeding with agile: software development using Scrum. Second. A Mike Cohn Signature Book;The Addison-Wesley Signature Series, editor. Boston, MA: Addison-Wesley Professional. (2013). p. 475.
  36. Stoyanov SR, Hides L, Kavanagh DJ, Zelenko O, Tjondronegoro D, Mani M. Mobile app rating scale: a new tool for assessing the quality of health mobile apps. *JMIR mHealth uHealth.* (2015) 3:e27. doi: 10.2196/mhealth.3422
  37. Pérez-López A, Villalobos-Gallegos L, Viveros M del C, Graue J, Marín-Navarrete R. Three versions of the Short Alcohol Dependence Data Questionnaire (SADD) in Mexican population: a comparative analysis of psychometric properties and diagnostic accuracy. *Salud Ment.* (2015) 38:281–6. doi: 10.17711/SM.0185-3325.2015.038
  38. Villalobos-Gallegos L, Pérez-López A, Mendoza-Hassey R, Graue-Moreno J, Marín-Navarrete R. Psychometric and diagnostic properties of the Drug Abuse Screening Test (DAST): Comparing the DAST-20 vs. the DAST-10. *Artículo Orig Salud Ment.* 2015 38:88–94. doi: 10.17711/SM.0185-3325.2015.012
  39. Sudarsanan S, Chaudhury S, Pawar AA, Saluja SK, Srivastava K. Psychiatric emergencies. *Med J Armed Forces India.* (2004) 60:59–62. doi: 10.1016/S0377-1237(04)80162-X
  40. Law MX, Pimentel MF, Oldenburg CE, de Alba Campomanes AG. Positive predictive value and screening performance of GoCheck Kids in a primary care university clinic. *J Am Assoc Pediatr Ophthalmol Strabismus.* (2020) 24:17.e1–17.e5. doi: 10.1016/j.jaapos.2019.11.006
  41. Carter G, Milner A, McGill K, Pirkis J, Kapur N, Spittal MJ. Predicting suicidal behaviours using clinical instruments: Systematic review and meta-analysis of positive predictive values for risk scales. *Br J Psychiatry.* (2017) 210:387–95. doi: 10.1192/bjp.bp.116.182717
  42. Pani PP, Maremmani I, Trogu E, Gessa GL, Ruiz P, Akiskal HS. Delineating the psychic structure of substance abuse and addictions: Should anxiety, mood and impulse-control dysregulation be included? *J Affective Disorders.* (2010). 122:185–97. doi: 10.1016/j.jad.2009.06.012
  43. Marín-Navarrete R, Fernández-Cáceres C, Madrigal de León E, Sánchez-Huesca R, Díaz-Negrete B, Rodríguez-Kuri S, et al. Characterization of dual disorders in addiction treatment-seekers at mexican outpatient centers. *Actas Esp Psiquiatr.* (2021) 49:1–10.
  44. Szerman N, Martínez-Raga J, Baler R, Roncero C, Vega P, Basurte I, et al. Joint statement on dual disorders: Addiction and other mental disorders. *Salud Mental.* (2017)40:245–7. doi: 10.17711/SM.0185-3325.2017.031

**Conflict of Interest:** The authors declare that the research was conducted in the absence of any commercial or financial relationships that could be construed as a potential conflict of interest.

**Publisher's Note:** All claims expressed in this article are solely those of the authors and do not necessarily represent those of their affiliated organizations, or those of the publisher, the editors and the reviewers. Any product that may be evaluated in this article, or claim that may be made by its manufacturer, is not guaranteed or endorsed by the publisher.

Copyright © 2021 Marín-Navarrete, Torrens, Toledo-Fernández, Mestre-Pintó, Sánchez-Domínguez, Pérez-Lopez, Saracco-Alvarez, Madrigal-De León and Szerman. This is an open-access article distributed under the terms of the Creative Commons Attribution License (CC BY). The use, distribution or reproduction in other forums is permitted, provided the original author(s) and the copyright owner(s) are credited and that the original publication in this journal is cited, in accordance with accepted academic practice. No use, distribution or reproduction is permitted which does not comply with these terms.