



M2-AChR Mediates Rapid Antidepressant Effects of Scopolamine Through Activating the mTORC1-BDNF Signaling Pathway in the Medial Prefrontal Cortex

Shuang Liu^{††}, Dandan Shi^{††}, Zuoli Sun¹, Yi He¹, Jian Yang^{1,2*} and Gang Wang^{1,2*}

OPEN ACCESS

Edited by:

Polymnia Georgiou,
University of Maryland, Baltimore,
United States

Reviewed by:

Weili Zhu,
Peking University, China
Lucia Caffino,
University of Milan, Italy

*Correspondence:

Jian Yang
yangjian@ccmu.edu.cn
Gang Wang
gangwangdoc@ccmu.edu.cn

^{††}These authors have contributed
equally to this work

Specialty section:

This article was submitted to
Mood and Anxiety Disorders,
a section of the journal
Frontiers in Psychiatry

Received: 02 September 2020

Accepted: 06 April 2021

Published: 17 May 2021

Citation:

Liu S, Shi D, Sun Z, He Y, Yang J and
Wang G (2021) M2-AChR Mediates
Rapid Antidepressant Effects of
Scopolamine Through Activating the
mTORC1-BDNF Signaling Pathway in
the Medial Prefrontal Cortex.
Front. Psychiatry 12:601985.
doi: 10.3389/fpsy.2021.601985

¹ The National Clinical Research Center for Mental Disorder and Beijing Key Laboratory of Mental Disorder, Beijing An Ding Hospital, Capital Medical University, Beijing, China, ² Advanced Innovation Center for Human Brain Protection, Capital Medical University, Beijing, China

Background: Scopolamine, a non-selective muscarinic acetylcholine receptor (M1~5-AChR) antagonist, has rapid and robust antidepressant effects in humans and other species. However, which of the five M-AChRs mediates these therapeutic effects has not been fully identified. Several studies implicate M2-AChR as a potential antidepressant target of scopolamine. This study aimed to explore the role of M2-AChR in scopolamine's antidepressant-like effects and determine the underlying mechanisms.

Methods: We used the classic novelty suppressed feeding test (NSFT), open field test (OFT) and forced swim test (FST) to observe antidepressant-related behaviors of normal rats, medial prefrontal cortex (mPFC) neuron silenced rats and M2-AChR knockdown rats treated with scopolamine. In a further experiment, the M2 cholinergic receptor antagonist methoctramine (MCT) was injected intracerebroventricularly into normal rats. Levels of mTORC1 and brain-derived neurotrophic factor (BDNF) in the mPFC of animals were analyzed by Western blotting.

Results: Consistent with previous studies, mPFC was required for the antidepressant-like effects of scopolamine, and intracerebroventricular injection of MCT into rats could produce similar antidepressant-like effects. Use of AAV-shRNA to knock down M2-AChR in the mPFC resulted in the antidepressant-like effects of scopolamine being blunted. Furthermore, Western blotting demonstrated increased expression of mTORC1 signaling and BDNF in MCT-treated rats.

Conclusion: Our results indicate that M2-AChR in the mPFC mediates the antidepressant-like effects of scopolamine by increasing the expression of BDNF and activating the mTORC1 signaling pathway.

Keywords: scopolamine, muscarinic acetylcholine receptor-2, medial prefrontal cortex, mammalian target of rapamycin complex 1, brain-derived neurotrophic factor

INTRODUCTION

Major depressive disorder (MDD) is characterized by anhedonia, loss of motivation and depressive mood. The prevalence of MDD in China is about 3.4%, causing an enormous economic burden on society (1). Drug therapy is the main treatment for MDD. However, the commonly used antidepressant drugs, including selective serotonin reuptake inhibitors (SSRIs) and selective serotonin and norepinephrine reuptake inhibitors (SNRIs), usually take 4–6 weeks to become effective, reducing the medication compliance of patients and having detrimental effects on long-term prognosis (2). Therefore, in recent years there has been an urgent need to research and develop novel, faster-acting antidepressants.

Scopolamine is a non-selective muscarinic acetylcholine receptor (M-AChR) antagonist and has affinity for five M-AChR subtypes, being most selective for M1- and M2-AChR. As an M-AChR antagonist, scopolamine has mainly been used in the treatment of motion sickness, Parkinson's disease, and pregnancy-related vomiting (3). In recent years, however, evidence from clinical trials indicated that scopolamine has a rapid and robust antidepressant effect in both bipolar and unipolar depression. Essentially, a single intravenous injection of low dose (4.0 $\mu\text{g}/\text{kg}$, i.v.) scopolamine can significantly improve depressive symptoms within 3 days and this effect can last for approximately 2 weeks, without serious adverse events. The available clinical evidence shows that it is unlikely to be addictive (4, 5).

It is known that scopolamine exerts rapid antidepressant effects by promoting the release of brain-derived neurotrophic factor (BDNF) and glutamate, activating the mammalian target of rapamycin complex 1 (mTORC1) and enhancing synaptogenesis in the medial prefrontal cortex (mPFC) (6–8). These effects are reported to be mediated by blockade of M1-AChR (8, 9). However, M2-AChR may also be involved in the antidepressant effects of scopolamine (10, 11). Animal studies have shown that scopolamine has no antidepressant-like effects in M1- or M2-AChR knockout mice, but the effects are retained in M3-, M4- or M5-AChR knockout mice (10). Selective M2-AChR antagonists can mimic the antidepressant-like effects of scopolamine (10, 11). Additionally, human studies support the association between M2-AChR and MDD. For example, a polymorphism of the M2-AChR encoding gene, CHRM2, is significantly correlated with development of MDD (12, 13) and MDD patients show reduced binding activity of M2-AChR, but not M1-, M3- and M4-AChR, in the dorsolateral prefrontal cortex (14, 15). Accordingly, we speculate that M2-AChR may be an important antidepressant target of scopolamine. The present study was therefore undertaken to confirm its key role and investigate the underlying mechanisms of M2-AChR in scopolamine's antidepressant-like effects.

MATERIALS AND METHODS

Animals

SPF Sprague Dawley (SD) male rats (total 160), aged 7 weeks and weighing 180–200 g, were pair-housed and maintained

in standard conditions with a 12-h light/dark cycle and access to food and water *ad libitum*. They were purchased from Beijing Vitalriver Experimental Animal Center, laboratory animal license number: SCXK (Beijing) 2016-0011. Animal procedures were under the authority of the Animal Ethics Committee of Capital Medical University (ethical permission number: AEEI-2018-017).

Drugs and Treatments

Scopolamine (25 $\mu\text{g}/\text{kg}$, Tocris, UK), dissolved in 0.9% saline, was injected intraperitoneally (i.p.). Muscimol (1.25 $\mu\text{g}/2 \mu\text{l}$, Abcam, USA) dissolved in 0.9% saline was bilaterally injected into the mPFC 1 h prior to scopolamine. M2-AChR antagonist methoctramine (MCT, GlpBio, USA), dissolved in 0.9% saline (0.5 $\mu\text{g}/2 \mu\text{l}$, 1 $\mu\text{g}/2 \mu\text{l}$ or 2 $\mu\text{g}/2 \mu\text{l}$), was injected intracerebroventricularly (i.c.v.) (8). M3-AChR antagonist 4-diphenylacetoxy-N-methylpiperidine methiodide (4-DAMP, 100 pmol, Cayman, USA) was dissolved in 0.9% saline (1 $\mu\text{g}/2 \mu\text{l}$) and injected i.c.v. (8). Rapamycin (Solarbio, China), dissolved in dimethyl sulfoxide (0.2 nmol/2 μl), was delivered i.c.v. 30 min prior to MCT injection. Groups of control animals for the above experiments received equal volumes of vehicle alone (0.9% saline or dimethyl sulfoxide). The experimental procedures are illustrated in **Figure 1**.

Behavioral Tests

Twenty-four hours after administration of scopolamine, MCT or vehicle, rats were sequentially tested for depression-associated behaviors using the open field test (OFT) followed by forced swim test (FST). Animals were then put back into the cage and 48 h later novelty suppressed feeding tests (NSFT) were conducted.

OFT

This test is used to evaluate autonomous behavior and tension levels of rats in a novel environment (16). The rats were individually placed in a coverless plastic square box (100 \times 100 \times 40 cm). A digital camera covering the entire field was placed above the box. At the beginning of the test, animals were placed in the center of the area and allowed to explore freely for 5 min. The total distance covered was recorded and analyzed by video tracking software (Supermaze, Shanghai XinRuan Information Technology Co., Ltd, China) to estimate effects of drug treatment on locomotor activity.

FST

This test is widely used in antidepressant drug research (17). Animals behave with desperation in this test, which is sensitive to most antidepressants. The rats were placed individually into a plexiglass cylinder (barrel height 50 cm, diameter 30 cm, purchased from Wuhan ProBeCare Scientific Inc., China) filled with room temperature water (25 \pm 1°C) to a depth of 37 cm, to ensure that animals could not touch the bottom of the container with their hind paws or tails. The time to immobility (only the head of the rat above the water, body floating in the water, limbs slightly moving but not struggling) was recorded within 5 min. The rats were placed in the same environment for 15 min for pre-swimming 24 h before the formal test. EthoVision XT software

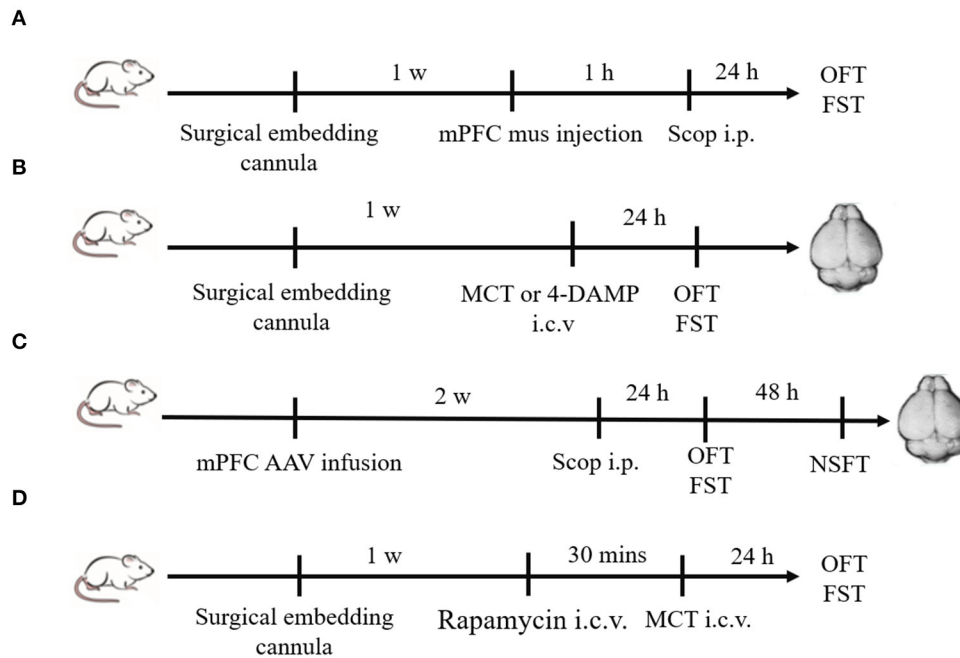


FIGURE 1 | Schematic diagram of experimental procedures. **(A)** Plastic guide cannulas were pre-implanted bilaterally into the mPFC. One week after recovery, muscimol (1.25 $\mu\text{g}/2\mu\text{l}$) was bilaterally injected through the cannulas 1 h prior to scopolamine administration (i.p.), and behavior tests were conducted 24 h after scopolamine administration. **(B)** Drugs (MCT or 4-DAMP) were bilaterally injected into the lateral ventricle through pre-implanted cannulas, and behavior tests were conducted 24 h later. Then animals were sacrificed, and brains were rapidly removed. **(C)** Two weeks after mPFC AAV infusion, scopolamine was injected (i.p.). Twenty-four hours later, OFT and FST were sequentially conducted. After another 48 h, NSFT were conducted. Then animals were sacrificed, and brains were rapidly removed. **(D)** Rapamycin (0.2 nmol/2 μl) were bilaterally injected into the lateral ventricle through pre-implanted cannulas 30 min prior to MCT administration (i.c.v.). OFT and FST were sequentially conducted 24 h after MCT administration.

(version 10, Noldus Information Technology Co., Netherland) was used to analyze the immobility time.

NSFT

This test is used to evaluate the anxiety and depression of animals in novel environments (18). Rats were food-deprived for 24 h and placed into a new dimly lit environment (100 \times 100 \times 40 cm) with food in the center. A digital camera covering the entire field was placed above the box and the latency for feeding (reflecting anxiety-like behavior) in 5 min was recorded. After that, animals were then returned to the home cage immediately and food consumption within 30 min was recorded to eliminate the influence of appetite.

Adeno-Associated Virus Construction

AAV-CHRM2-shRNA (pAAV-U6-shRNA (Chrm2)-CMV-EGFP-pA) (2.41E + 12vg/ml) purchased from Wuhan BrainVTA Scientific Inc. (Wuhan, China) was injected bilaterally into the mPFC (1 μl in each side). Its empty vector (pAAV-U6-BBSI-shRNA-CMV-EGFP-pA, 2.97E + 12vg/ml) was used as a negative control. The sequence for CHRM2-shRNA was GCCACCTTCAGACTGTCAACA.

Stereotactic Injection

Rats were anesthetized by 3% sodium pentobarbital solution (30 mg/kg, i.p.) and fixed in the stereotaxic apparatus. For

intracerebral injection of drugs, plastic guide cannulas were pre-implanted bilaterally into the infralimbic cortex (IL) of mPFC (AP = 2.8 mm, ML = \pm 0.6 mm, DV = -3.8 mm) and bilateral lateral ventricle (AP = 0.9 mm, L = \pm 1.5 mm, DV = -3.5 mm) (19). One week after recovery, drugs were slowly injected into the target regions at a speed of 0.2 $\mu\text{l}/\text{min}$ via a syringe pump (LongerPump Co. LTD, China). Viruses (1 μl on each side) were directly injected bilaterally into the mPFC through a Hamilton syringe using a syringe pump without pre-implantation of guide cannulas. The animals were kept for 2 weeks to allow for virus infection.

Western Blotting

Animals were sacrificed and brains were rapidly removed and frozen in liquid nitrogen. mPFC was dissected out bilaterally using a brain mold on ice. Homogenates of the dissected tissue were lysed using lysis buffer (Beyotime Biotechnology, China) containing protease inhibitors (Sigma, USA) and phosphorylase inhibitors (Sigma, USA). Electrophoresis was performed on 4–15% Mini-PROTEAN TGX precast gels (Bio-Rad, USA). Primary antibodies used included anti-BDNF (1:500, Abcam, Cat GR3227037-2, USA), -M2-AChR (1:500, Abcam, Cat GR50911-14, USA), -mTORC1 (1:500, Cell Signaling Technology, Cat 2983S, USA), -phospho-mTORC (1:500, Cell Signaling Technology, Cat 5536S, USA) and - β -Actin (1:1,000, Santa Cruz, Cat SC47778,

USA). Secondary antibodies used included HRP anti-rabbit antibody (1:5,000, Beyotime, China) and HRP anti-mouse antibody (1:5,000, Beyotime, China). Bands were detected using a chemiluminescence imaging system (Bio-Rad, USA). Image J (NIH, USA) software was used to analyze band densitometry.

Statistical Analysis

Data are presented as the mean \pm standard deviation of the mean (SD). Statistical analysis was conducted using two-tailed Student's *t*-tests (parametric test) and Mann-Whitney *U*-test (non-parametric test) for two-group comparisons. One-way ANOVA or two-way ANOVA was used for three or four-group comparisons, followed by Tukey's multiple comparisons. GraphPad Prism software (version 8.0, GraphPad, USA) was used and differences were considered significant at $p < 0.05$.

RESULTS

The mPFC Is Required for Antidepressant-Like Effects of Scopolamine

Previous studies have demonstrated that scopolamine at a dose of 25 μ /kg (i. p.) has rapid and robust antidepressant-like effects on rats, (10, 20–22), and mPFC is a target region of these effects. We replicated these through using a gamma-aminobutyric acid type A (GABA-A) receptor agonist (muscimol) to silence neurons in the mPFC. At the same time, saline and scopolamine were used as two control groups. As shown in **Figure 2A** ($F = 6.624$, $p = 0.0053$), compared with the saline control group, immobility time in the FST was significantly reduced by scopolamine ($p = 0.0049$), and muscimol significantly increased the immobility time of scopolamine treated rats in the FST ($p = 0.0412$). But there was no significant difference in the locomotor activity in the OFT among these three groups ($p > 0.05$, **Figure 2B**).

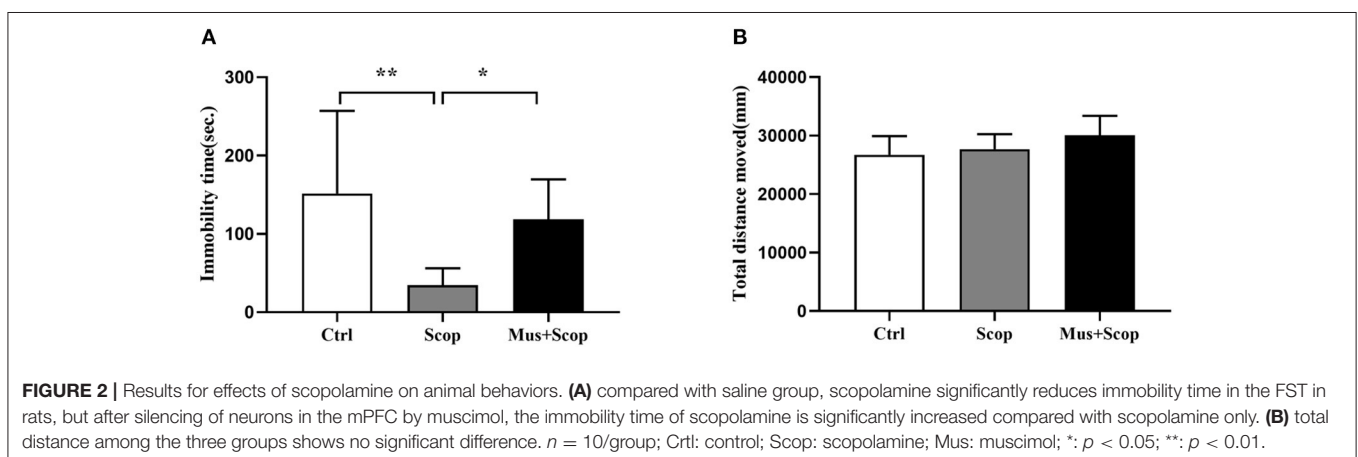
M2-AChR Mediates the Antidepressant-Like Effects of Scopolamine

MCT, a selective M2 cholinergic receptor antagonist, was used to further explore M2-AChR participation in antidepressant-like effects of scopolamine. Consistent with our previous study (23), we found that intracerebroventricular injection of 1 μ g MCT significantly reduced immobility time in the FST ($p = 0.0081$, $t = 3.906$, **Figure 3A**), while 4-DAMP (100 pmol, i.c.v.), a selective M3-AChR antagonist had no such effect ($p > 0.05$, **Figure 3C**). In addition, neither significantly affected locomotor activity in the OFT ($p > 0.05$, **Figures 3B,D**).

To further investigate the role of M2-AChR in the antidepressant effects of scopolamine, we injected an AAV vector expressing CHRM2-shRNA (AAV-CHRM2-shRNA) into the mPFC bilaterally, which produced an $\sim 35\%$ reduction in M2-AChR protein levels in the mPFC ($p = 0.0253$, $t = 3.484$, **Figures 4A,B**). Compared with empty vector + saline group, M2-AChR knockdown (KD) induced a significant decrease of immobility time in the FST ($F = 5.261$, $p = 0.0317$, **Figure 4C**). However, scopolamine could no longer reduce the immobility time in M2-AChR KD rats (**Figure 4C**) and M2-AChR KD rats showed a similar effect of scopolamine ($p = 0.0351$, **Figure 4C**). Similar results were obtained in the NSFT, scopolamine significantly reduced the latency to feeding in the empty vector group ($F = 7.077$, $p = 0.0309$, **Figure 4D**), while M2-AChR KD blocked this effect (**Figure 4D**). Home cage food consumptions among the four groups were not statistically different. There was no statistical difference in total distance in the OFT among these groups ($p > 0.05$, **Figure 4E**). Taken together, these findings indicate that M2-AChR is required for the antidepressant-like effects of scopolamine.

mTORC1 Signaling Is Essential for the Antidepressant Effects of MCT

It has been demonstrated that scopolamine exerts rapid antidepressant-like effects through activation of the mTORC1 signaling pathway. Here, we observed similar effects of MCT



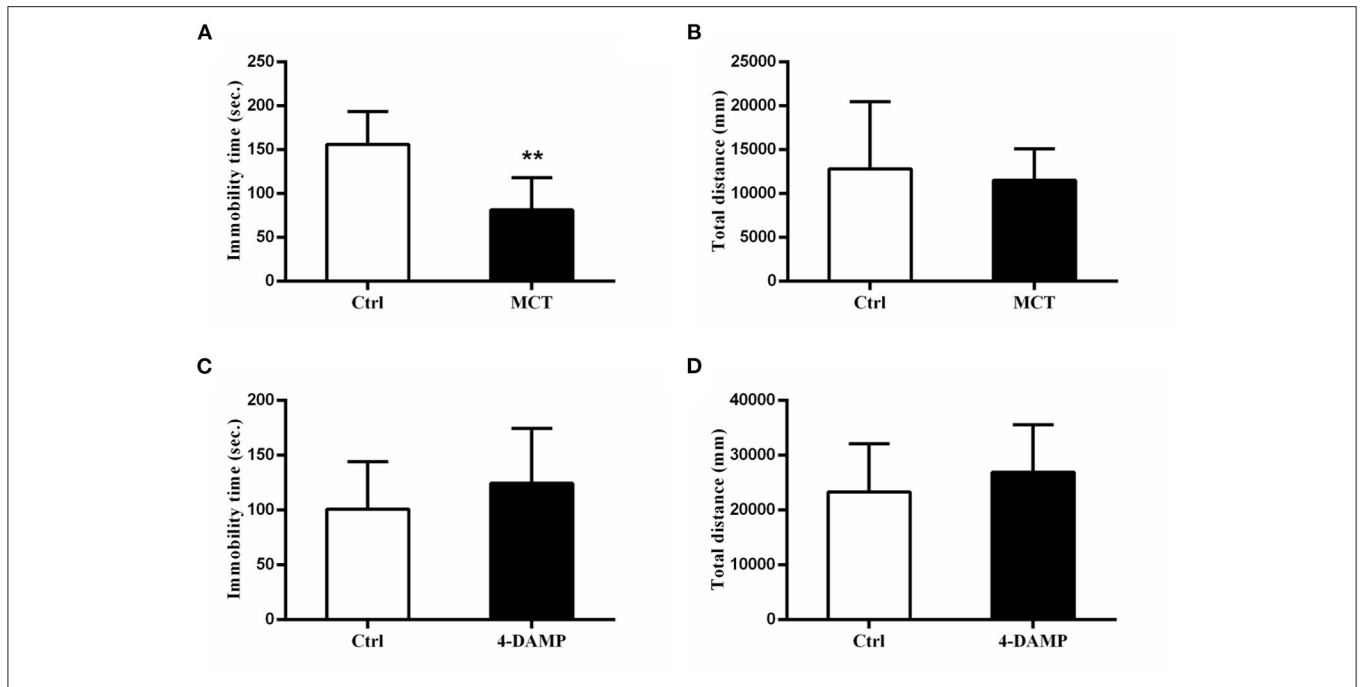


FIGURE 3 | Effects of MCT and 4-DAMP on animal behavior. **(A)** using 1 $\mu\text{g}/\mu\text{l}$ MCT to block M2-AChR in the mPFC significantly reduces the immobility time in the FST. **(B)** total distance between the two groups is not significantly different. **(C)** using 4-DAMP to block M3-AChR cannot significantly reduce the immobility time in the FST. **(D)** total distance between the two groups is not significantly different. $n = 7-9/\text{group}$; Ctrl: control; **: $p < 0.01$.

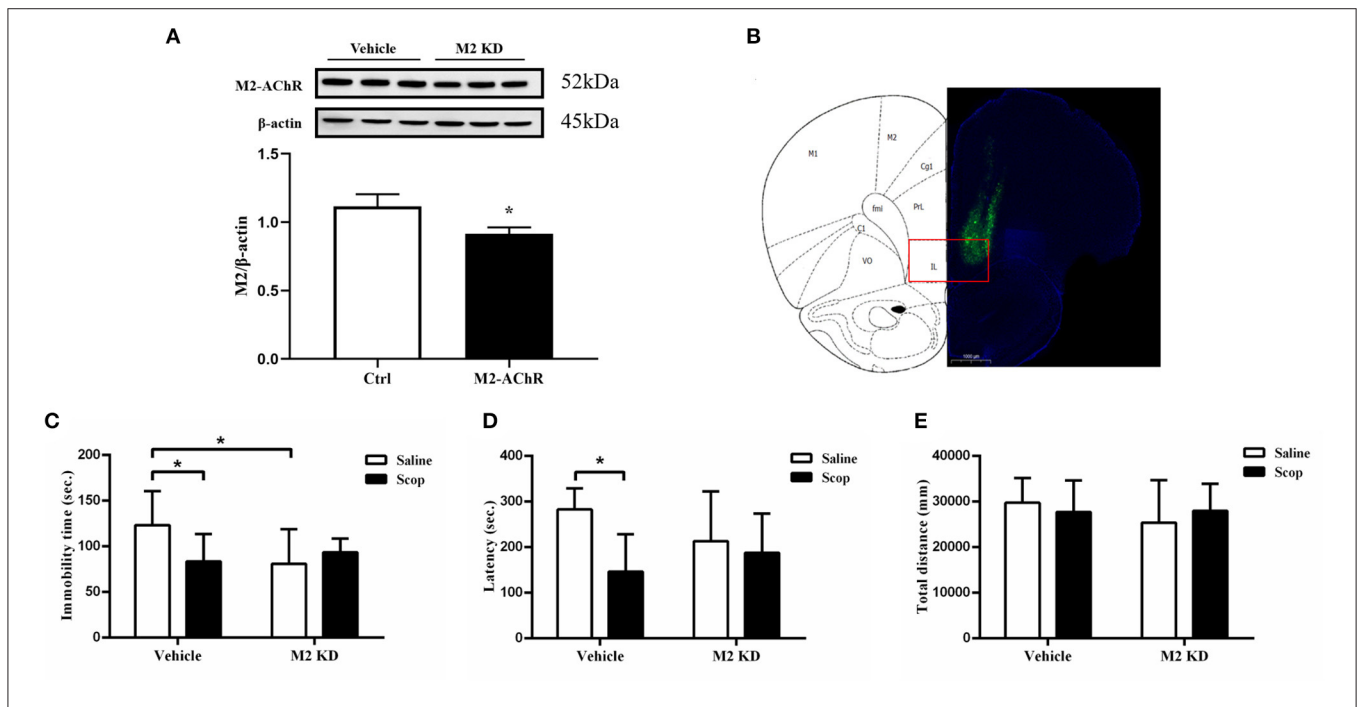


FIGURE 4 | **(A)** Expression of M2-AChR in the M2-KD group was significantly reduced. **(B)** location of frozen section needle path, showing that AAV-CHRM2-shRNA (pAAV-U6-shRNA (Chrm2)-CMV-EGFP-pA) was injected into the mPFC. **(C)** immobility time of the M2-KD-saline group and Ctrl-scop group is significantly reduced. **(D)** latency of the Ctrl + saline group in NSFT is significantly reduced. **(E)** total distance between these groups shows no significant difference. $n = 7-9/\text{group}$; Ctrl: control; Scop: scopolamine; *: $p < 0.05$.

on mTORC1 signaling in the mPFC ($p = 0.0023$, $t = 5.053$, **Figures 5A,B**). In addition, MCT significantly increased the expression of BDNF in the mPFC ($p = 0.0182$, $t = 3.218$, **Figures 5A,C**). MCT induced a significant decrease of immobility time in the FST ($F = 5.371$, $p = 0.0131$; $p = 0.0447$, **Figure 5D**). However, after pretreatment with the mTORC1 inhibitor rapamycin (0.2 nmol/2 μ l, i.c.v.), the antidepressant-like effect of MCT in the FST was completely inhibited ($p = 0.0163$, **Figure 5D**). These results suggest that the BDNF/mTORC1 signaling pathway is critical to the antidepressant-like effects of MCT.

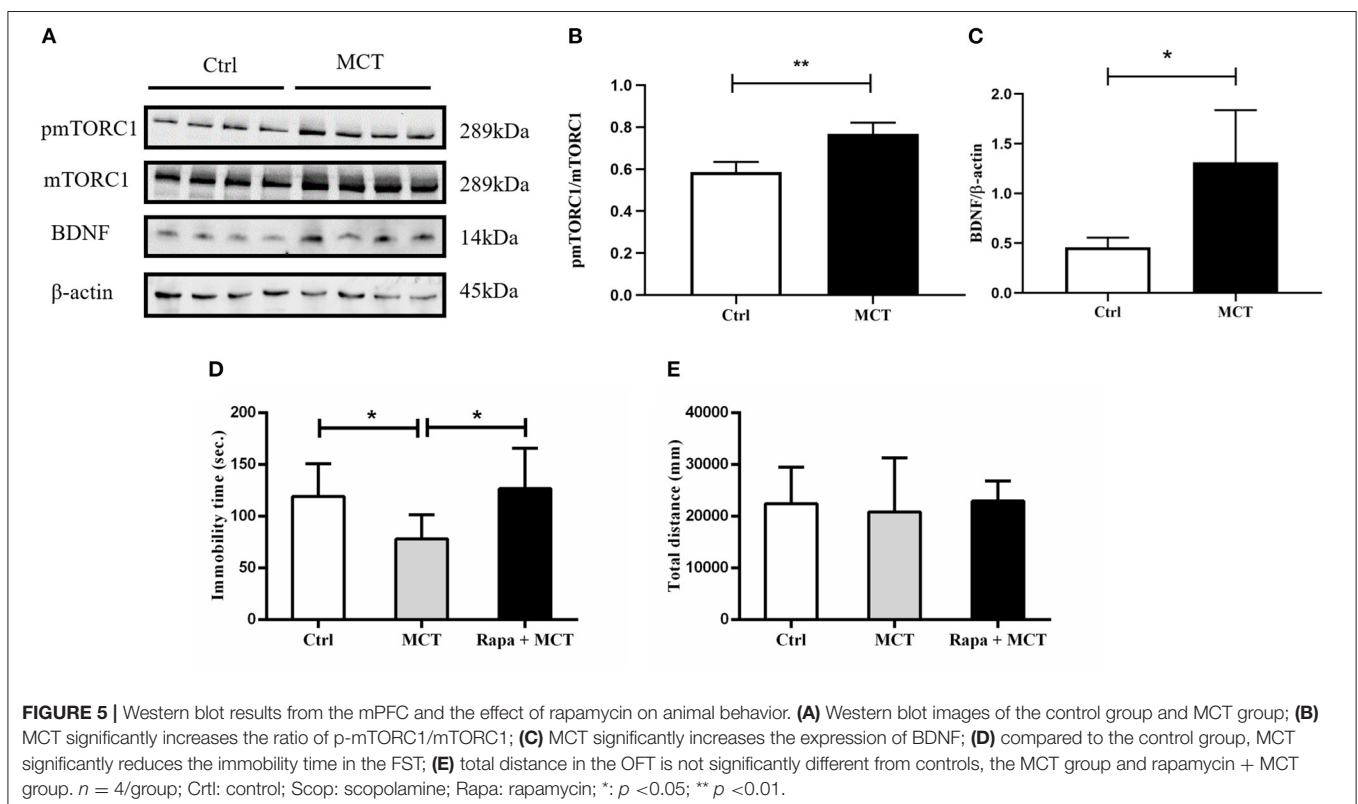
DISCUSSION

Both human and animal studies have demonstrated that scopolamine has rapid and robust antidepressant activities. However, as a non-selective M-AChR antagonist, scopolamine acts at all five M-AChRs (M1-M5) with equal potency, and it has not been fully determined which one of them mediates these therapeutic effects. In the present study, we found that M2-AChR in the mPFC is required for the antidepressant-like effects of scopolamine, and enhancement of the BDNF/mTORC1 signaling pathway may be the downstream mechanism antagonizing M2-AChR.

Dysfunction of the mPFC has been linked to the cognitive and emotional deficits in depression (24). Herein, our results reveal that silencing neurons in the mPFC could abolish

the antidepressant-like effects of scopolamine (**Figure 2**), identifying the mPFC as a critical brain region for the behavioral effects of scopolamine. This is consistent with the finding by Voleti et al. that scopolamine administration rapidly increased neuronal activity in the mPFC (20). Also, ketamine, as a non-competitive glutamate N-methyl-D-aspartate (NMDA) receptor antagonist, has been shown to rapidly relieve depression symptoms through enhancement of α -amino-3-hydroxy-5-methyl-4-isoxazole propionic acid receptor (AMPA) receptor signaling in the mPFC (25). Moreover, both scopolamine and ketamine have been demonstrated to rapidly stimulate glutamate/GABA-glutamine cycling in the mPFC, which is critical in initiating rapid-acting antidepressant activity (25, 26). In addition to the mPFC, the hippocampus may also be involved in the antidepressant like effects of scopolamine. Several rodent studies have shown that scopolamine induces PKA-dependent AMPA receptor potentiation and increased expression of BDNF and the neuropeptide VGF in the hippocampus (11, 22). Other brain regions, such as the lateral habenula, nucleus accumbens and others, are also reactive to scopolamine administration (20). Therefore, it is likely that scopolamine acts on emotion-related circuits composed by multiple brain regions to exert its antidepressant effects, and this complexity necessitates further study.

In relation to the specific antidepressant target of scopolamine, most of the previous studies focus on the



M1-AChR. In the brain, M1-AChR is mainly located in the hippocampus, striatum medium spiny neurons, cortical pyramidal neurons, amygdala, and thalamus postsynaptic. It is expressed in glutamatergic pyramidal neurons and GABA interneurons with increased excitability and its physiological functions include learning, memory, inflammatory cytokine production, etc. (27, 28). A recent study showed that M1-AChR in mPFC somatostatin-GABA interneurons is antagonized by scopolamine, leading to disinhibition of pyramidal glutamate neurons, increased glutamate release and enhanced numbers and function of synapses. A study of the M1- and M3-AChR antagonist penehyclidine hydrochloride (PHC) also gave similar results: PHC could improve depressive-like behaviors in depression model mice and increased BDNF expression could be observed in the hippocampus (29). By contrast, specifically knocking down the M1-AChR of SST-GABA interneurons weakened the rapid antidepressant-like effect of scopolamine (9). These results show that M1-AChR is a main target of scopolamine's rapid antidepressant-like effects. In our study, we found that intracerebroventricular injection of MCT produced similar antidepressant-like effects to scopolamine in the FST (**Figure 3**) and knocking down M2-AChR in the mPFC blocked scopolamine's antidepressant-like effects in the FST (**Figure 4**). This is consistent with the results of a previous study that M2-AChR knockout (KO) mice had a blunted response to scopolamine in the FST and the antagonist SCH226206, which has selectivity for M2-AChR over M1-AChR, was effective in the FST but the effect was negated in M2-AChR KO mice (10). M2-AChR is mainly located in the basal forebrain, thalamus, brainstem, heart and exocrine glands (27), and scopolamine therapy may have some dry mouth and cardiovascular-related adverse effects. However, no trials have been halted due to serious adverse events (21, 30).

M1-AChR studies have found that scopolamine can stimulate glutamate transmission or glutamate burst, resulting in a long-term potentiation-like synaptogenic effect (8). Reports of the downstream mechanisms of M2-AChR antidepressant-like effects, however, are rare. Here, we found that MCT activated mTORC1 signaling and increased BDNF expression in the mPFC and inhibiting mTORC1 with rapamycin could block antidepressant-like effects of MCT (**Figure 5**). The mTORC1 pathway is implicated in activity-dependent synaptic plasticity, especially in neuronal dendrites and spines (31). Dong et al. reported that scopolamine blocks M2-AChR, activating the PKA signaling pathway, which results in mTORC1 pathway activation and synaptic plasticity enhancement (11). The rapid antidepressant effect of ketamine also relies on the rapid activation of mTORC1 signaling, resulting in activation of synapse-associated proteins, such as extracellular signal-regulated kinase (ERK), protein kinase B (PKB/Akt) and phosphorylated 70S6 kinase (p70S6K), increasing in spine number in the PFC and release of BDNF in the amygdala (32, 33). Increased expression of mTORC1 related proteins including phosphorylated ERK 1/2, phosphorylated Akt, p70S6K and others, is required for synaptic and antidepressant effects (6). Animal studies have similar conclusions: both

the phosphorylation of mTORC1 and its downstream protein p70S6K are significantly reduced in depressive model animals (34). Protein kinase is well-known to be involved in glutamic synaptic enhancement and synaptic plasticity and patients with depression have altered AMPA receptor expression, which is closely related to the pathophysiology of depression (35). Nonetheless our study has the limitation that its related mechanisms were not explored. As mentioned above, scopolamine could stimulate BDNF and VGF release in the hippocampus and PFC and after using verapamil to block L-type voltage-dependent calcium channels (L-VDCC), antidepressant-like behavior and upregulation of BDNF and VGF were blunted (22). BDNF is an important neurotransmitter involved in regulation of emotions. BDNF expression in depressive animal models is decreased (36) and animal work has also shown that acute administration of ketamine improves BDNF and mTOR levels in the hippocampus, so the mTORC1-BDNF signaling pathway is probably the target of the rapid antidepressant effect (37). Together, these data indicate that regulating BDNF expression and mTORC1 signaling in the PFC and hippocampus may be involved in the rapid antidepressant effects of scopolamine. Further research is underway and answering these remaining questions will have a profound impact on the development of novel rapid-acting antidepressants.

As mentioned, there are limitations in the current study. First, we did not directly examine whether scopolamine activates mTORC1 and increases BDNF expression via M2-AChRs in the mPFC. Secondly, our findings were not validated in animal models of depression (e.g., the chronic unpredictable stress model). Lastly, the current study used only male rats, so our findings may not be generalizable to female rats.

CONCLUSION

Our current data from rats suggest that the antidepressant-like behaviors of scopolamine may depend on blockade of M2-AChR and activation of the mTORC1-BDNF signaling pathway in the mPFC. In addition, our findings indicate that intracerebroventricular injection of a defined dose of the M2-AChR antagonist MCT has similar behavioral effects and responses at a molecular level.

DATA AVAILABILITY STATEMENT

The raw data supporting the conclusions of this article will be made available by the authors, without undue reservation.

ETHICS STATEMENT

The animal study was reviewed and approved by Animal Ethics Committee of Capital Medical University.

AUTHOR CONTRIBUTIONS

All authors listed have made a substantial, direct and intellectual contribution to the work, and approved it for publication.

FUNDING

This work was supported by the National Nature Science Foundation of China (81601185), Beijing Hospital Authority

REFERENCES

- Huang Y, Wang Y, Wang H, Liu Z, Yu X, Yan J, et al. Prevalence of mental disorders in China: a cross-sectional epidemiological study. *Lancet Psychiatry*. (2019) 6:211–24. doi: 10.1016/S2215-0366(18)30511-X
- Papakostas GI. Limitations of contemporary antidepressants: tolerability. *J Clin Psychiatry*. (2007) 68(Suppl 10):11–7. doi: 10.1016/j.foodres.2003.08.001
- Renner UD, Oertel R, Kirch W. Pharmacokinetics and pharmacodynamics in clinical use of scopolamine. *Ther Drug Monit*. (2005) 27:655–65. doi: 10.1097/01.ftd.0000168293.48226.57
- Drevets WC, Furey ML. Replication of scopolamine's antidepressant efficacy in major depressive disorder: a randomized, placebo-controlled clinical trial. *Biol Psychiatry*. (2010) 67:432–8. doi: 10.1016/j.biopsych.2009.11.021
- Furey ML, Drevets WC. Antidepressant efficacy of the antimuscarinic drug scopolamine: a randomized, placebo-controlled clinical trial. *Arch Gen Psychiatry*. (2006) 63:1121–9. doi: 10.1001/archpsyc.63.10.1121
- Ghosal S, Bang E, Yue W, Hare BD, Lepack AE, Girgenti MJ, et al. Activity-dependent brain-derived neurotrophic factor release is required for the rapid antidepressant actions of scopolamine. *Biological Psychiatry*. (2018) 83:29–37. doi: 10.1016/j.biopsych.2017.06.017
- Dulawa SC, Janowsky DS. Cholinergic regulation of mood: from basic and clinical studies to emerging therapeutics. *Mol Psychiatry*. (2019) 24:694–709. doi: 10.1038/s41380-018-0219-x
- Navarria A, Wohleb ES, Voleti B, Ota KT, Duthel S, Lepack AE, et al. Rapid antidepressant actions of scopolamine: role of medial prefrontal cortex and M1-subtype muscarinic acetylcholine receptors. *Neurobiol Dis*. (2015) 82:254–61. doi: 10.1016/j.nbd.2015.06.012
- Wohleb ES, Wu M, Gerhard DM, Taylor SR, Picciotto MR, Alreja M, et al. GABA interneurons mediate the rapid antidepressant-like effects of scopolamine. *J Clin Invest*. (2016) 126:2482–94. doi: 10.1172/JCI85033
- Witkin JM, Overshiner C, Li X, Catlow JT, Wishart GN, Schober DA, et al. M1 and m2 muscarinic receptor subtypes regulate antidepressant-like effects of the rapidly acting antidepressant scopolamine. *J Pharmacol Exp Ther*. (2014) 351:448–56. doi: 10.1124/jpet.114.216804
- Dong J, Zhou Q, Wei Z, Yan S, Sun F, Cai X. Protein kinase A mediates scopolamine-induced mTOR activation and an antidepressant response. *J Affect Disord*. (2018) 227:633–42. doi: 10.1016/j.jad.2017.11.041
- Wang JC, Hinrichs AL, Stock H, Budde J, Allen R, Bertelsen S, et al. Evidence of common and specific genetic effects: association of the muscarinic acetylcholine receptor M2 (CHRM2) gene with alcohol dependence and major depressive syndrome. *Human Mol Genet*. (2004) 13:1903–11. doi: 10.1093/hmg/ddh194
- Comings DE, Wu S, Rostamkhani M, McGue M, Iacono WG, MacMurray JP. Association of the muscarinic cholinergic 2 receptor (CHRM2) gene with major depression in women. *Am J Med Genet*. (2002) 114:527–9. doi: 10.1002/ajmg.10406
- Gibbons AS, Scarr E, McLean C, Sundram S, Dean B. Decreased muscarinic receptor binding in the frontal cortex of bipolar disorder and major depressive disorder subjects. *J Affect Disord*. (2009) 116:184–91. doi: 10.1016/j.jad.2008.11.015
- Gibbons AS, Jeon WJ, Scarr E, Dean B. Changes in muscarinic M2 receptor levels in the cortex of subjects with bipolar disorder and major depressive disorder and in rats after treatment with mood stabilisers and antidepressants. *Int J Neuropsychopharmacol*. (2016) 19:pyv118. doi: 10.1093/ijnp/pyv118

Youth Program (QML20181901), Beijing Young Top-Notch Talent Support project (2018000021223ZK36), and National Key Research & Development Program of China (2016YFC1307200).

SUPPLEMENTARY MATERIAL

The Supplementary Material for this article can be found online at: <https://www.frontiersin.org/articles/10.3389/fpsy.2021.601985/full#supplementary-material>

- Walsh RN, Cummins RAJPB. The open-field test: a critical review. (1976) 83:482.
- Lucki, Pharmacology IJB. The forced swimming test as a model for core and component behavioral effects of antidepressant drugs. *Behav Pharmacol*. (1997) 8:523–32. doi: 10.1097/00008877-199711000-00010
- Camargo A, Pazini FL, Rosa JM, Wolin IAV, Research ALSRJoP. Augmentation effect of ketamine by guanosine in the novelty-suppressed feeding test is dependent on mTOR signaling pathway. *J Psychiatr Res*. (2019) 115:103–112. doi: 10.1016/j.jpsychires.2019.05.017
- Paxinos G, Watson C. *The Rat Brain in Stereotaxic Coordinates*. (1986).
- Voleti B, Navarria A, Liu RJ, Banasr M, Li N, Terwilliger R, et al. Scopolamine rapidly increases mammalian target of rapamycin complex 1 signaling, synaptogenesis, and antidepressant behavioral responses. *Biol Psychiatry*. (2013) 74:742–9. doi: 10.1016/j.biopsych.2013.04.025
- Zhou J, Yang J, Zhu X, Zghoul T, Wang GJTAP. The effects of intramuscular administration of scopolamine augmentation in moderate to severe major depressive disorder: a randomized, double-blind, placebo-controlled trial. *Ther Adv Psychopharmacol*. (2020) 10:1–11. doi: 10.1177/2045125320938556
- Yu H, Li M, Shen X, Lv D, Sun X, Wang J, et al. The requirement of L-type voltage-dependent calcium channel (L-VDCC) in the rapid-acting antidepressant-like effects of scopolamine in mice. *Int J Neuropsychopharmacol*. (2018) 21:175–86. doi: 10.1093/ijnp/pyx080
- Shi DD, Yang J, Zhang JN, Wang G. Effects of scopolamine on forced swimming behavior in rats and its possible action target. *J Cap Med Univ*. (2018) 39:630–5. doi: 10.3969/j.issn.1006-7795.2018.05.002
- Seo JS, Wei J, Qin L, Kim Y, Yan Z, Greengard P. Cellular and molecular basis for stress-induced depression. *Mol Psychiatry*. (2017) 22:1440–7. doi: 10.1038/mp.2016.118
- Krystal JH, Sanacora G, Duman RS. Rapid-acting glutamatergic antidepressants: the path to ketamine and beyond. *Biol Psychiatry*. (2013) 73:1133–41. doi: 10.1016/j.biopsych.2013.03.026
- Chowdhury GM, Zhang J, Thomas M, Banasr M, Ma X, Pittman B, et al. Transiently increased glutamate cycling in rat PFC is associated with rapid onset of antidepressant-like effects. *Mol Psychiatry*. (2017) 22:120–6. doi: 10.1038/mp.2016.34
- Hasselmann H. Scopolamine and depression: a role for muscarinic antagonism? *CNS & Neurological Disorders - Drug Targets*. (2014) 13:673–83. doi: 10.2174/1871527313666140618105710
- Brown DA. Muscarinic acetylcholine receptors (mAChRs) in the nervous system: some functions and mechanisms. *J Mol Neurosci*. (2010) 41:340–6. doi: 10.1007/s12031-010-9377-2
- Sun X, Sun C, Zhai L, Dong W. A selective M1 and M3 receptor antagonist, penhyclidine hydrochloride, exerts antidepressant-like effect in mice. *Neurochem Res*. (2019) 44:2723–32. doi: 10.1007/s11064-019-02891-5
- Drevets WC, Zarate CA, Jr., Furey ML. Antidepressant effects of the muscarinic cholinergic receptor antagonist scopolamine: a review. *Biol Psychiatry*. (2013) 73:1156–63. doi: 10.1016/j.biopsych.2012.09.031
- Hoeffer CA, Klann E. mTOR signaling: at the crossroads of plasticity, memory and disease. *Trends Neurosci*. (2010) 33:67–75. doi: 10.1016/j.tins.2009.11.003
- Li N, Lee B, Liu RJ, Banasr M, Dwyer JM, Iwata M, et al. mTOR-dependent synapse formation underlies the rapid antidepressant effects of NMDA antagonists. *Science*. (2010) 329:959–64. doi: 10.1126/science.1190287

33. Lepack AE, Bang E, Lee B, Dwyer JM, Duman RS. Fast-acting antidepressants rapidly stimulate ERK signaling and BDNF release in primary neuronal cultures. *Neuropharmacology*. (2016) 111:242–52. doi: 10.1016/j.neuropharm.2016.09.011
34. Chandran A, Iyo AH, Jernigan CS, Legutko B, Austin MC, Karolewicz B. Reduced phosphorylation of the mTOR signaling pathway components in the amygdala of rats exposed to chronic stress. *Prog Neuropsychopharmacol Biol Psychiatry*. (2013) 40:240–5. doi: 10.1016/j.pnpbp.2012.08.001
35. Freudenberg F, Celikel T, Reif A. The role of alpha-amino-3-hydroxy-5-methyl-4-isoxazolepropionic acid (AMPA) receptors in depression: central mediators of pathophysiology and antidepressant activity? *Neuroscience & Biobehavioral Reviews*. (2015) 52:193–206. doi: 10.1016/j.neubiorev.2015.03.005
36. Angelucci F, Brenè S, Mathé AA. BDNF in schizophrenia, depression and corresponding animal models. *Mol Psychiatry*. (2005) 10:345–52. doi: 10.1038/sj.mp.4001637
37. Yang C, Hu YM, Zhou ZQ, Zhang GF, Yang JJ. Acute administration of ketamine in rats increases hippocampal BDNF and mTOR levels during forced swimming test. *Ups J Med Sci*. (2013) 118:3–8. doi: 10.3109/03009734.2012.724118

Conflict of Interest: The authors declare that the research was conducted in the absence of any commercial or financial relationships that could be construed as a potential conflict of interest.

Copyright © 2021 Liu, Shi, Sun, He, Yang and Wang. This is an open-access article distributed under the terms of the Creative Commons Attribution License (CC BY). The use, distribution or reproduction in other forums is permitted, provided the original author(s) and the copyright owner(s) are credited and that the original publication in this journal is cited, in accordance with accepted academic practice. No use, distribution or reproduction is permitted which does not comply with these terms.