



The Role of Adolescence in Development Paths Toward Suicide: Specificities and Shaping of Adversity Trajectories

Charles-Edouard Notredame^{1,2,3,4*}, Nadia Chawky^{4,5}, Guy Beauchamp⁴, Guillaume Vaiva^{1,2,3,6} and Monique Séguin^{3,4,5,7}

¹ Psychiatry Department, CHU Lille, Lille, France, ² PSY Lab, Lille Neuroscience & Cognition Centre, INSERM U1172, Lille University, Lille, France, ³ Groupement d'Étude et de Prévention du Suicide, Saint-Benoît, France, ⁴ Réseau Québécois sur le suicide, les troubles de l'humeur et les troubles associés, Douglas University Mental Health Institute, Verdun, QC, Canada, ⁵ McGill Group for Suicide Studies, Douglas University Mental Health Institute, Verdun, QC, Canada, ⁶ Centre National de Ressources et Résilience pour les Psychotraumatismes (Cn2r), Lille, France, ⁷ Department of Psychology, Université du Québec en Outaouais, Gatineau, QC, Canada

OPEN ACCESS

Edited by:

David Cohen,
Université Pierre et Marie
Curie, France

Reviewed by:

Tae Kyoung Lee,
University of Miami Hospital,
United States
Xavier Benarous,
Centre Hospitalier Universitaire de
Amiens, France

*Correspondence:

Charles-Edouard Notredame
charles-edouard.notredame@
chru-lille.fr

Specialty section:

This article was submitted to
Child and Adolescent Psychiatry,
a section of the journal
Frontiers in Psychiatry

Received: 19 August 2020

Accepted: 14 October 2020

Published: 30 October 2020

Citation:

Notredame C-E, Chawky N,
Beauchamp G, Vaiva G and Séguin M
(2020) The Role of Adolescence in
Development Paths Toward Suicide:
Specificities and Shaping of Adversity
Trajectories.
Front. Psychiatry 11:557131.
doi: 10.3389/fpsy.2020.557131

Purpose: Adolescence is a key period of transitions in the psychological, cognitive, neurobiological and relational domains, which is associated to high susceptibility to adverse life experiences. However, the way adolescent development alters life paths toward suicide remains unclear. Thereby, we aimed at testing whether and how adolescence interfered with the adversity trajectories of individuals who died by suicide.

Methods: In a sample of 303 individuals who died by suicide, longitudinal Burden of Adversity ratings were derived from extensive psychological autopsies and life trajectory narrative interviews conducted with informants. Piecewise Joint Latent Class Models allowed the identification of patterns of adversity trajectories and tested the introduction of breakpoints in life-paths. Classes inferred from the optimal model were compared in terms of socio-demographics, psychopathology, and rate of different adverse life events.

Results: The most accurate model derived 2 trajectory patterns with a breakpoint in early adolescence. In the first class ($n = 39$), the burden of adversity increased steadily from birth to death, which occurred at 23 ($SE = 1.29$). In the second class ($n = 264$), where individuals died at 43 years of age ($SE = 0.96$), the burden of adversity followed a similar trajectory during infancy but stabilized between 10 and 14 years and started to increase again at about 25. Childhood family instability, dependent events, exposure to suicide, intra-family sexual victimization and affective disorders at death were more frequent in class 1.

Conclusions: A bifurcation in trajectories between early and late suicides occurs during adolescence. The dynamic pattern of adversity during this period is a key issue to understand the developmental heterogeneity in suicide risk.

Keywords: suicide, adolescence, adversity, trajectories, development

INTRODUCTION

Among 15 to 29-year-olds, suicide represents the second most common cause of death and accounts for 8.5% of young people dying worldwide (1). Interestingly, suicidal behaviors generally appear, but also peak immediately after puberty (2), suggesting that adolescence may play a critical role in the development of suicidal risk.

Developmental approaches, which focus on how risk factors dynamically integrate at an individual level (3), offer a convenient framework to study how the socio-biological transformations of adolescence interferes with life-paths toward suicide (4). In a review of literature using a developmental framework, Turecki and Brent have consolidated the stress-diathesis approach of suicide, according to which the level of stress needed to precipitate suicidal behaviors depends on a specific vulnerability state called diathesis (5). The authors propose to categorize most influential risk factors based on their putative role in the sequence toward suicidal outcomes. They described distal risk factors as the early biological and environmental determinants that durably shape a person's vulnerability to suicide, developmental risk factors as the phenotypic expressions of this diathesis and proximal risk factors as the clinical conditions or triggering negative life events that contribute to precipitating suicidal behaviors.

From a developmental point of view, this stress-diathesis model builds upon a conception of suicide where individuals are seen as self-regulated organisms that adapt to a changing environment (6, 7). Because detected as threats, Adverse Life Experiences (ALE) elicit integrated neuro-biological reactions, as well as psychological and environmental changes, to maintain the balance (7). At the behavioral level, deviations from homeostasis trigger goal-oriented coping reactions in order to solve the adverse experience and/or minimize its subjective painful consequences (8). Due to a multifactorial vulnerability (5), some individuals may exhibit an increased probability of dysfunctional responses to stress—a condition known as diathesis (6). Suicide is then understood as the most extreme form of abnormal coping strategy due to stress exhausting or overwhelming regulatory mechanisms (9, 10).

Developmental models of suicidal behaviors still crucially lack proof of concept, since traditional epidemiological methods are ill-suited to the multi-deterministic and interactionist postulates of developmental psychopathology (3). In line with more dynamic alternative approaches (11, 12), our team has sought to take the understanding of the causal process toward suicide a step further by computing trajectories of Burden of Adversity (BA) (4, 13). Derived from extensive narrative material, the notion of BA integrates not only the ALE that a person has encountered in his/her life, but also the severity, interactions, repetitions and context of these ALE. Conceptually, the BA measures both the occurrence of adverse life events and their consequences in terms of maladaptive coping strategies and impact in functioning.

Using longitudinal analysis, we previously identified two typical trajectories toward suicide (4). Both showed similar increasing patterns during young childhood; however, while one sharply accumulated high levels of adversity in the following age periods until death, the other was characterized by low-to-moderate BA during the whole lifetime. Although foreshadowing the effect of adolescence on the curves, the model didn't specifically test it.

However, the stress-diathesis model of suicide suggests the pivotal function of adolescence in trajectories toward suicide. During this age period, the status of risk factors changes: the diathesis is deemed stabilized and adversity mostly undergoes a precipitating influence. Implicitly, such a functional switch involves a transition in the nature of the stress-diathesis interplay, possibly reflecting the developmental transformations that adolescence implies. On the one hand, sensation-seeking, risk-taking, and appetite for novelty enable youth exploratory behaviors but also increase the probability of encountering ALE. On the other hand, puberty comes with dramatic maturation of neural and hormonal components of the allostatic system (14), thus altering the way individuals regulate stress responses and cope with adversity (8). Unfortunately, among the few longitudinal studies of adversity conducted so-far, none have specifically tested the transitional value of adolescence in life courses toward suicide.

In the present paper, we aimed at empirically deriving distinct developmental pathways toward suicide while examining whether and how such trajectories were affected by adolescence.

MATERIALS AND METHODS

Sample and Recruitment Procedure

Participants were recruited in the provinces of Québec and New Brunswick, Canada. The sample came from four successive recruitment waves conducted between 2003 and 2015. We included all the cases of suicide registered by the provincial Chief Coroner's office during the corresponding periods. On average, 75% of identified cases were included. Reasons for non-inclusion were over-riding legal contingencies, absence of an informant, or lack of contacts between the deceased person and his or her family members.

Informants included in order of importance: parents, siblings, spouses or ex-spouses, and adult children. In some cases, two informants were interviewed, either at the same time or separately. This allowed to maximize the narrative recall by combining memories of experiences that occurred at different life periods.

The protocol received approval from the ethics review boards of the Douglas Mental Health University Institute, the Centre Hospitalier Universitaire Sainte-Justine and the Université du Québec en Outaouais. All informants signed a consent form.

Data Collection

General Procedure

Skilled investigators conducted two to three in-depth interviews with each informant, focusing on their deceased relative. The interviews occurred between 6 and 18 months after the death, lasted 2–3 h on average and comprised three sections:

Abbreviations: ALE, Adverse Life Experiences; BA, Burden of Adversity; SCID-I and SCID-II, Structured Clinical Interview for DSM-IV for Axis I and Axis II disorders, respectively.

exploration of sociodemographic characteristics and medical history, psychopathological investigation and inventory of ALE. Data collected during interviews was cross-checked with medical, psychiatric, and psychosocial reports that were accessible from hospital files. These reports were obtained from the office of the Chief Coroner upon signed agreement of family members. Personal written documents belonging to the deceased and the informants, such as agendas and diaries, were also used if available.

Psychopathology

Each case was submitted to a post-mortem diagnostic assessment according to the psychological autopsy standards. The investigators administered the Structured Clinical Interview for DSM-IV for Axis I and Axis II disorders (SCID-I and SCID-II) to the informant, who was invited to respond in reference to his/her relative. In an ancillary validation study, Schneider et al. found that the inter-rater and test-retest reliability of the “by-proxy” diagnostic procedures used in psychological autopsies was excellent for most Axis I disorders ($k > 0.84$), and good to excellent for Axis II disorders ($k > 0.65$). In the same study, concordance between directly administered and informant-based SCID diagnosis reached k values above 0.65 for mood disorders, anxiety disorders and any axis I disorders, and strong agreements ($> 97\%$) for personality disorders (15). Similar performances have been replicated in several psychological autopsy studies [e.g., (16–18)].

Inventory of Adverse Life Experiences and Estimation of Burden of Adversity

To collect all the possible ALE that the subjects had encountered, we carried out semi-structured conversational explorations

inspired from life calendar narrative methods (19). The screening was conducted along a double axis of progression: (a) chronological, i.e., from birth to death, and (b) dimensional, i.e., across 9 predefined spheres of life: parent-child relationship and early ALE, affective life, procreation and/or siblings, academic or professional life, extended family, social life, losses, living conditions, and personal adversity. The retrospective recall was guided by visual timelines on which informants pinpointed memory anchors such as significant biographical elements. The length, frequency, severity, and context of each reported event were systematically collected. All the interviews were tape-recorded.

Collecting adverse life events with an informant is a standard method of psychological autopsies (20). However, only few evidence is available about the reliability of this practice. In a sample of 80 psychiatric inpatients admitted after a suicide attempt, Conner et al. found that the convergence between direct and proxy-based life event investigations was fair so substantial, with kappa ranging from 0.38 to 0.70 (21). In the present study, we sought to optimize these performances by guiding the retrospective recall. To do so, we used visual timelines on which informants pinpointed memory anchors such as significant biographical elements. We also encouraged them to use personal documents such as calendars and pictures.

Qualitative data collected from the narrative interviews were quantitatively transformed according to a human-rating procedure. After each interview, the investigators drafted synthetic clinical vignettes and summary visual calendars out of the subjects’ interview, which were then submitted to a panel of independent expert raters. In a clinical decision process, the raters were asked to integrate, for 5-year periods, all the ALE that had occurred, their developmental context and the

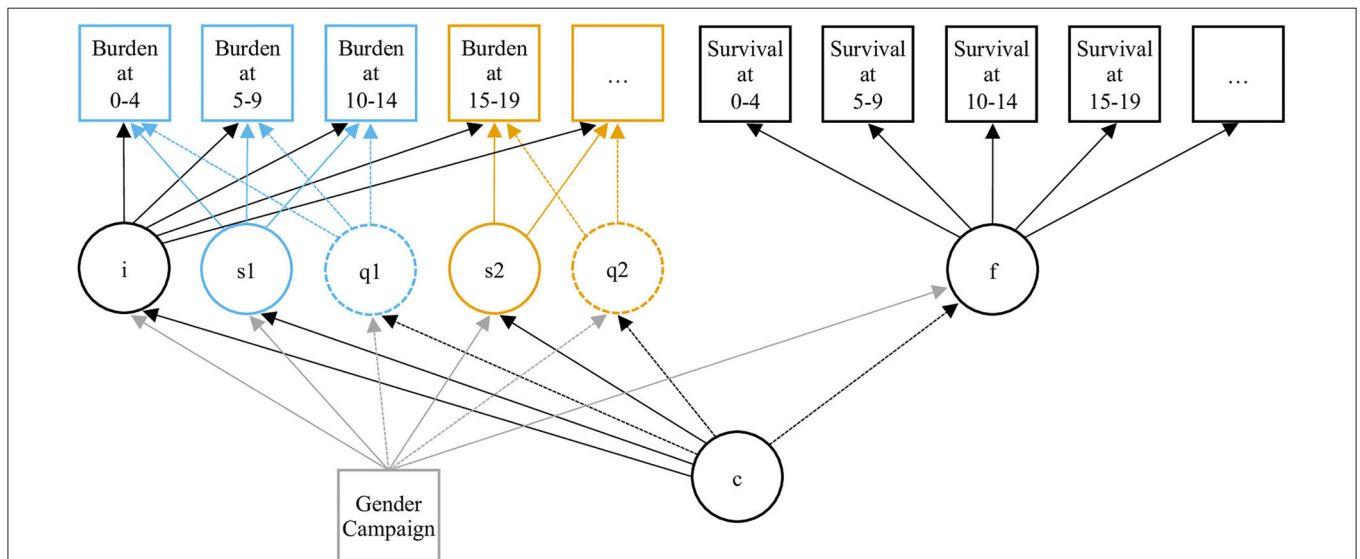
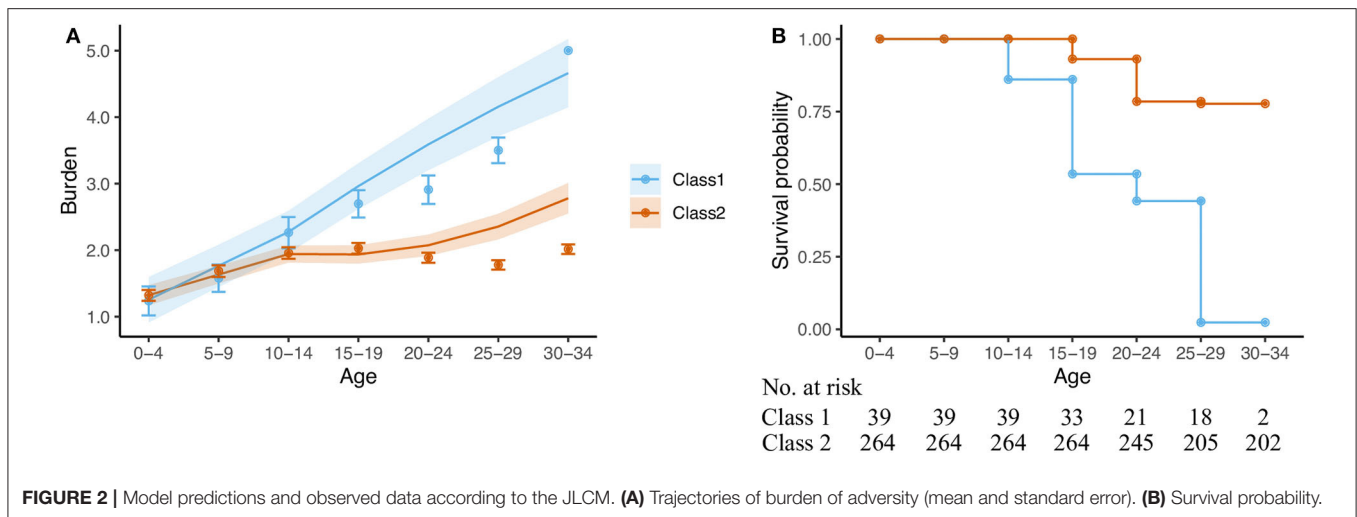


FIGURE 1 | Diagram of the Joint Latent Class Model. Circles represent latent variables or processes: intercept (i), slope (q) and quadratic term (q) of the growth process, hazard function (f), and clustering variable (c). Squares represent observed variables: burden of adversity, survival data, and covariates (gender and recruitment wave). The specification of different successive slopes (s1 and s2) and quadratic terms (q1 and q2) allows piecewise Modeling. The 2 pieces of the trajectories are differentiated by their blue and yellow colors.



history of the individuals. This estimation took the form of a BA value ranging from 0 (low) to 5 (severe) based on standard definitions. The experts rated each trajectory independently before a consensus discussion.

Data Analysis

After computing individual BA evolution, we used Joint Latent Class Modeling (JLCM) to derive typical adversity trajectories while accounting for the time-dependent risk of dying (22, 23). Each class was specified by its own latent growth parameters, estimated from the BA variance-covariance matrix, and the hazard function parameters, derived from the corresponding survival data set. The class membership probability was estimated over both the processes.

To assess whether adolescence represented a breaking point in the developmental trajectories to suicide, we then computed piecewise JLCM where the value of the latent growth parameters in each class was authorized to change as of a pre-determined timepoint (24). We decided to test both linear and quadratic segments of curves, as previous research showed that curvilinear shapes better account for BA trajectories than linear shapes (4).

The resulting structure we used for our models is represented in **Figure 1**. We implemented all possible variations of this structure according to the following factorial development: [2, 3, or 4 classes] \times [linear or linear + quadratic curve] \times [no break, break at 15, 20, or 25]. A quadratic term was added only on curve segments for which the number of points was sufficient for the model to be specified. Class-specific growth and hazard parameters were adjusted on the subjects' gender and recruitment wave as time-invariant covariates.

Because the proportion of people alive progressively decreased with age, resulting in poorer information, we decided to fit our model on the 7 first time-points of available BA values, i.e., until age 34 years. Remaining non-ignorable missing data due to people dying were taken into account by the JLCM. Because JLCM account for the evolution of the outcome and for the dropouts at the same time, they allow for compensating attrition biases (25).

The detailed selection process for the best fitting model is described in **Supplementary Material**. Parameter estimates adjusted on time-invariant covariates corresponding to this model are available in the **Supplementary Table 1**. We then conducted pairwise intra- and inter-class comparisons of the growth parameter segments using Wald tests. We also compared the two classes in terms of sociodemographic characteristics, psychopathology and occurrence of ALE during distal (0–9 years old), proximal (year prior to death), and trajectory break-point periods. We used 2-sided Wilcoxon or Student tests to compare continuous distributions and Chi-square of Fisher tests to compare proportions. The alpha risk was fixed at 0.05.

Statistics were conducted with Mplus Version 7.4 (26) and R version 3.6.1 (27).

RESULTS

Our sample consisted of 303 individuals. Seventy percent were men. Mean age at death was 40.5 ($SD = 16.3$).

Model Predictions

The model we retained was a 2-class, quadratic piecewise LCGM with a break at age 10–14. The fit indices were as follows: $AIC = 4822.4$, $BIC = 4993.3$, $entropy = 0.91$.

The predicted BA trajectories corresponding to each class are represented in **Figure 2A**. In the first class, which included 39 individuals (13% of the sample) who died at mean age 23.2 ($SD = 8.0$), the BA started from a non-null value of 1.25 ($SE = 0.07$) at birth and steadily increased at a rate of 0.51 ($SE = 0.09$) to 0.72 units ($SE = 0.21$) per 5 years until death. The growth was rather smooth and linear, as the quadratic term was non-significant ($p = 0.545$) and the Wald test did not reveal any significant difference between the slope parameters of the curve segments ($W = 0.83$, $p = 0.361$). The remaining 264 (87%) individuals of the sample followed a BA trajectory that also increased from birth to young adolescence at a rate of 0.31 ($SE = 0.03$) units per 5 years. However, the growth in BA significantly dampened at age 10–14 before progressively increasing again,

as suggested by a non-significant slope of 0.08 ($SE = 0.06$, comparison with the slope of the first segment: $W = 32.69$, $p < 0.001$), but a significant quadratic term of 0.07 ($SE = 0.02$). In this class, death occurred at mean age 43.1 ($SD = 15.6$). Slopes significantly differed between the two classes. Size effects were modest for the first segment ($W = 5.28$, $p = 0.022$) and important for the second segment ($W = 14.46$, $p < 0.001$).

As illustrated by the survival curves in **Figure 2B**, the model predicted that nearly half of individuals in class 1 died before the age of 19, and almost none survived beyond 29 years of age. By contrast, more than 75% of individuals in class 2 were still alive at 30–34 years of age.

Class Comparison Sociodemographic and Psychopathological Characteristics

The sociodemographic and psychopathological characteristics of the 2 classes are presented in **Table 1**. As expected from the between-class discrepancy in mean age at death, we found significant differences in terms of academic level, civil status, mean number of children, and household. By contrast, the classes were comparable with respect to the gender ratio and the recruitment wave.

In terms of psychiatric diagnosis (see **Table 2**), the two classes differed only in the proportion of individuals suffering from affective disorders at death, which was significantly higher in class 2 than in class 1 (57 vs. 38%, $p = 0.048$).

Distal ALE

As observable in **Table 3**, left columns, the classes differed significantly in the proportion of individuals concerned by conflicts or tensions with close family members (54% in class 1 vs. 31% in class 2, $p = 0.004$), arrival of a new partner in one of the parents' lives (10% in class 1 vs. 2% in class 2, $p = 0.018$), learning disabilities (33% in class 1 vs. 18% in class 2, $p = 0.018$) and exposure to the suicide of a friend or family member (21% in class 1 vs. 7% in class 2, $p = 0.013$) between ages 0 and 9 years.

ALE During the Trajectories Break-Point Period

The inter-class comparisons of the ALE that occurred in the 10–14 period is available **Table 3**, middle columns. The proportion of individuals who experienced social isolation or conflicts within the family unit during early adolescence was significantly higher in class 1 than in class 2 (44 vs. 17%, $p < 0.001$ and 62 vs. 40%, $p = 0.010$, respectively). The two classes also differed significantly in the proportion of members exposed to intra-family sexual violence (26% in class 1 vs. 11% in class 2, $p = 0.027$) or suicide of a relative (28% in class 1 vs. 10% in class 2, $p = 0.004$) between 10 and 14. Finally, we found significantly more behavioral problems in class 1 than in class 2 at these ages (44 vs. 17%, $p < 0.001$).

Proximal ALE

With respect to proximal ALE (**Table 3**, right columns), more class 1 individuals had experienced the following events within the year prior to death, compared with class 2 individuals: conflicts or tensions with a close family member (49% in class 1 vs. 16% in class 2, $p = 0.001$), parental neglect (23% in class

TABLE 1 | Inter-class comparison of sociodemographic characteristics.

Variables	NA <i>n</i> (%)	Modalities	Class 1 (<i>n</i> = 39)	Class 2 (<i>n</i> = 264)	<i>p</i> -value ^a
Age <i>M</i> (<i>SE</i>)	0 (0)		23.2 (1.29)	43.1 (0.96)	<0.001
Recruitment wave <i>n</i> (%)	0 (0)	Wave 1 Wave 2 Wave 3 Wave 4	14 (36) 8 (21) 8 (21) 9 (23)	65 (25) 62 (23) 59 (22) 78 (30)	0.506
Gender <i>n</i> (%)	0 (0)	Female	7 (18)	83 (31)	0.125
Civil status <i>n</i> (%)	2 (0)	Single Common law Married Separated Divorced Widowed	26 (67) 6 (15) 3 (08) 4 (1) 0 (0) 0 (0)	93 (35) 9 (3) 88 (34) 28 (11) 37 (14) 7 (3)	<0.001
<i>N</i> of children <i>M</i> (<i>SE</i>)	20 (1)		0.4 (14)	1.2 (1)	0.001
Academic level <i>n</i> (%)	19 (1)	Post-graduate Graduate Undergraduate High school Middle school Elementary	1 (3) 0 (0) 13 (36) 13 (36) 9 (25) 0 (0)	9 (4) 23 (9) 126 (51) 40 (16) 33 (13) 17 (7)	0.002
Employment <i>n</i> (%)	12 (0)	Employed	18 (51)	123 (48)	0.845
Household <i>n</i> (%)	11 (0)	Single With parents With partner With children With family With roommate Other	10 (26) 9 (24) 1 (3) 1 (3) 3 (8) 9 (24) 5 (13)	92 (36) 54 (18) 43 (17) 6 (2) 9 (4) 13 (5) 37 (15)	0.003

M, Mean; *NA*, Not Acknowledged; *SE*, Standard Error.

^aMeans are compared with non-paired Wilcoxon tests. Proportions are compared with Chi-square or Fisher exact tests depending on the marginal probabilities.

1 vs. 7% in class 2, $p = 0.004$) or conflict with a friend (24% in class 1 vs. 11% in class 2, $p = 0.037$). In addition, there were more frequent behavioral and/or psychological problems in class 1 than in class 2 at the time of death (26 vs. 4% and 15 vs. 1%, respectively, $p < 0.001$). Conversely, a higher proportion of class 2 individuals was exposed to conjugal tensions or arguments in their last year of life (14 vs. 0%, $p = 0.007$).

DISCUSSION

Relying on a mixed quantitative/qualitative longitudinal approach, we found that adolescence was associated with the bifurcation of two distinct developmental trajectories toward suicide, each corresponding to a specific subpopulation. While both classes had experienced growing adversity during infancy, the divergence of the trajectories increased as of early

TABLE 2 | Inter-class comparison of psychopathological characteristics.

	Diagnosis at death			Life diagnosis		
	Class 1 n (%)	Class 2 n (%)	p-value ^a	Class 1 n (%)	Class 2 n (%)	p-value ^a
Bipolar disorder	0 (0)	11 (4)	0.370	0 (0)	10 (4)	0.371
Characterized depressive disorder	12 (31)	113 (43)	0.211	4 (10)	67 (25)	0.060
Any mood disorder ^b	15 (38)	150 (57)	0.048	9 (23)	103 (39)	0.081
Psychosis	4 (10)	13 (5)	0.251	3 (8)	13 (5)	0.443
Alcohol use disorder	11 (28)	63 (24)	0.697	11 (28)	80 (3)	0.937
Drug use disorder	11 (28)	44 (17)	0.128	12 (31)	49 (19)	0.119
Anxiety disorder	3 (8)	19 (7)	1.000	3 (8)	23 (9)	1
Post-traumatic stress disorder	1 (3)	7 (3)	1.000	1 (3)	10 (4)	1
Eating disorder	2 (5)	2 (1)	0.082	2 (5)	2 (1)	0.082
Attention deficit—hyperactivity disorder	0 (0)	1 (0)	1.000	0 (0)	15 (6)	0.232
Borderline personality disorder	6 (15)	36 (14)	0.963			
Any personality disorder	15 (38)	130 (49)	0.277			

ADHD, Attention Deficit-Hyperactivity Disorder; BPD, Borderline Personality Disorder; DSM, *Diagnosis Statistical Manual (as assessed by the Structured Clinical Interview for the DSM)*; PTSD, Post-Traumatic Stress Disorder.

^aProportions are compared with Chi-square or Fisher exact tests depending on the marginal probabilities.

^bMood disorders encompass depressive disorders, bipolar disorders, and dysthymia.

adolescence. For individuals dying at middle age (class 2), the interplay between adversity and coping strategies stabilized temporarily during young adulthood, possibly due to more efficient allostatic regulation mechanisms. By contrast, suicides in late adolescence (class 1) were preceded by a constant increase in BA, suggesting an acceleration of allostatic alterations.

We see two possible hypotheses to account for the bifurcation that our model predicted at 10–14. First, a substantial proportion of the two classes experienced early ALE that have been identified as strong predictors of suicidal behaviors, including childhood neglect, psychological, physical and sexual violence (28–30). However, individuals who died during late adolescence differed significantly in terms of frequency of conflicts and tensions in the family and arrival of a new partner in one of the parents' lives. Household instability and family stress have been demonstrated to compromise internal safety, emotional regulation or conflict resolution (31), thus altering children's coping abilities (32). Therefore, the divergence of the two trajectories as of puberty may reflect individuals' differential adaptive resources in relation to their early family context. This hypothesis is consistent with repeated evidence that some neuro-biological consequences of early exposure to stress become evident during adolescence, an observation that Lupien et al. coined "incubation/potential effect" (14). Alternatively, the steady increase in BA observed in individuals who died in late adolescence could have resulted from some ALE occurring more frequently during the 10–14 period. This would be consistent with the critical vulnerability to adversity that adolescence is known to imply (33–35), due to immature regulation of hormonal responses (36) and greater stress-sensitivity of key brain regions (14, 35).

Interestingly, suicide trajectories were both characterized by the overrepresentation of dependent adverse events [i.e., events that likely occurred non-randomly due to the individual/environment interrelationship (19)], which had

a strong social valence. It is thus possible that the social reconfigurations and allostatic maturation that puberty involves have initiated interaction loops between (a) interpersonal dependent ALE (e.g., school difficulties, academic drop out, conflicts with relatives or social isolation) pressurizing adolescents' stress-regulation system and (b) maladaptive coping strategies (reflected by behavioral problems), altering the probability of social ALE to occur (37). Formally speaking, this is equivalent to priming unsteady dynamics in complex open individual–environment systems (38). Mild differences in the early calibration of these systems (39), but also disturbances provoked by ALE disrupting pubertal processes may have resulted in a progressive amplification of the divergence between trajectories. In individuals who died earlier, the cascade (40) may have led to early exhaustion of adaptive mechanisms. Illustrative of such developmental path, Benarous et al. showed that irritability, which can be considered a maladaptive reaction pattern to stress, may contribute to youth suicidal behaviors via three synergic effects (41): it predisposes individuals to suicidal ideations, increases the risk of psychopathology and triggers the transition from suicidal ideation to suicide attempts. In individuals who died later by contrast, the system may have temporarily stabilized, but progressively drifted due to the progressive faltering of allostatic mechanisms, as reflected by the greater proportion of individuals suffering from affective disorders at death. Supporting this interpretation, Neeleman et al. have proposed that the early stages of the suicidal process are mostly driven by environmental influences while the late stages are more autonomous and intricately linked with mental illnesses (42).

Two types of the distal ALE overrepresented in earlier suicide trajectories are worth noting. Almost 25% of individuals who died during late adolescence were victims of intrafamily sexual violence between ages 10 and 14. The literature presents robust

TABLE 3 | Between-class comparison of the frequency of adverse events experienced in childhood (0–9), adolescence (10–14), and in the year prior to death.

	0–9 years old			10–14 years old			Year prior death		
	Class 1 n (%)	Class 2 n (%)	p-value ^a	Class 1 n (%)	Class 2 n (%)	p-value ^a	Class 1 n (%)	Class 2 n (%)	p-value ^a
Adversity related to the family of origin									
Victim of intra-familial sexual violence	7 (18)	41 (16)	0.880	10 (26)	30 (11)	0.027	5 (13)	7 (3)	0.011
Conflicts or tensions with (a) close family member(s)	21 (54)	80 (31)	0.004	24 (62)	105 (40)	0.010	19 (49)	43 (16)	<0.001
Affective distance with (a) close family member(s)	1 (3)	17 (6)	0.486	1 (3)	19 (7)	0.488	2 (5)	9 (3)	0.639
Parental neglect	13 (33)	94 (36)	0.922	15 (38)	81 (31)	0.429	9 (23)	19 (7)	0.004
Inadequate education	9 (23)	48 (18)	0.465	9 (23)	54 (20)	0.706	4 (11)	16 (6)	0.122
Forced to keep or left in ignorance of a secret	2 (5)	20 (8)	0.826	1 (3)	27(1)	0.213	0 (0)	12 (5)	0.376
Separation with (a) close family member(s)	8 (21)	53 (20)	1.000	4 (10)	58 (22)	0.139	3 (8)	25 (9)	1.000
Mental health issues in the family of origin	2 (5)	41 (16)	0.136	2 (5)	42 (16)	0.123	5 (13)	7 (3)	0.011
New partner in parent's life	4 (10)	5 (2)	0.018	1 (3)	2 (1)	0.340	0 (0)	1 (0)	1.000
Adversity related to affective life									
End of a romantic relationship	0 (0)	0 (0)	–	3 (8)	8 (3)	0.156	8 (21)	67 (25)	0.647
Tensions and/or arguments in the couple	0 (0)	0 (0)	–	0 (0)	2 (1)	1.000	0 (0)	37 (14)	0.007
Extra-conjugal relationship of the partner	0 (0)	0 (0)	–	0 (0)	1 (0)	1.000	3 (8)	11 (4)	0.402
Adversity related to procreation and/or siblings									
Mental health problem in child(ren)	0 (0)	0 (0)	–	0 (0)	0 (0)	–	0 (0)	17 (6)	0.142
Conflicts with child(ren)	0 (0)	0 (0)	–	0 (0)	0 (0)	–	0 (0)	25 (9)	0.055
Change in the frequency of interaction with child(ren)	0 (0)	0 (0)	–	0 (0)	0 (0)	–	2 (5)	12 (5)	0.698
Personal adversity									
Victim of psychological violence	7 (18)	62 (23)	0.572	8 (21)	60 (23)	0.917	5 (13)	20 (8)	0.343
Victim of physical violence	3 (8)	27 (10)	0.779	2 (5)	26 (10)	0.553	1 (3)	1 (0)	0.241
Personal physical health problem	5 (13)	44 (17)	0.647	9 (23)	33 (12)	0.084	10 (26)	83 (32)	0.464
Personal psychological health problem	6 (15)	11 (4)	0.441	9 (23)	17 (6)	0.441	6 (15)	3 (1)	0.001
Personal behavioral problems	5 (13)	18 (7)	0.319	17 (44)	45 (17)	<0.001	10 (26)	10 (4)	0.001
Serious accident	0 (0)	5 (2)	1.000	0 (0)	3 (1)	1.000	2 (5)	18 (7)	1.000
Witness or victim of a traumatic event	4 (1)	13 (5)	0.251	4 (1)	17 (6)	0.328	0 (0)	10 (4)	0.371
Adversity related to academic or professional life									
Learning disabilities, poor academic performance or school dropout	13 (33)	48 (18)	0.047	17 (44)	72 (27)	0.057	10 (26)	21 (8)	0.004
Relational problems with peers, bullying or harassment at school	3 (8)	22 (18)	0.000	7 (18)	24 (9)	0.094	2 (5)	6 (2)	0.275
Difficulties in finding work	0 (0)	0 (0)	–	0 (0)	0 (0)	–	3 (8)	12 (5)	0.421
Conflicts with colleagues or boss	0 (0)	0 (0)	–	0 (0)	0 (0)	–	0 (0)	11 (5)	0.370
Job loss	0 (0)	0 (0)	–	0 (0)	0 (0)	–	2 (5)	4 (2)	0.173
Unemployment	0 (0)	0 (0)	–	0 (0)	0 (0)	–	6 (15)	53 (2)	0.636
Adversity related to the extended family									
Change in the frequency of interaction with a member of the extended family	0 (0)	0 (0)	–	0 (0)	0 (0)	–	6 (15)	32 (12)	0.604
Relational difficulties with a member of the extended family	0 (0)	0 (0)	–	0 (0)	0 (0)	–	2 (5)	34 (13)	0.195
Mental health problems in a member of the extended family	0 (0)	0 (0)	–	0 (0)	0 (0)	–	8 (21)	41 (16)	0.578
Physical health problems in a member of the extended family	0 (0)	0 (0)	–	0 (0)	0 (0)	–	0 (0)	15 (6)	0.284
Adversity related to social life									
Difficulty making friends or engaging in social relationships	3 (8)	20 (8)	1.000	7 (18)	26 (10)	0.163	5 (13)	32 (12)	0.799
Loss of (a) friend(s)	1 (3)	5 (2)	0.566	3 (8)	7 (3)	0.125	2 (5)	14 (5)	1.000
Conflictual interactions with (a) friend(s) or rejection	1 (3)	4 (2)	0.500	3 (8)	5 (2)	0.070	9 (24)	28 (11)	0.037
Social isolation	3 (8)	15 (6)	0.713	9 (23)	17 (6)	0.002	7 (18)	73 (28)	0.276
Adversity related to losses									
Move or departure	10 (26)	42 (16)	0.132	7 (18)	22 (8)	0.076	9 (24)	34 (13)	0.136
Death of a close relative	1 (3)	6 (2)	1.000	1 (3)	12 (5)	1.000	2 (5)	8 (3)	0.623
Suicide attempt in a relative	1 (3)	5 (2)	0.566	3 (8)	14 (5)	0.467	1 (3)	12 (5)	1.000
Suicide of a relative	8 (21)	19 (7)	0.013	11 (28)	27 (10)	0.004	3 (8)	22 (8)	1.000
Adversity related to living conditions									
Precarious living conditions	0 (0)	17 (6)	0.142	0 (0)	14 (5)	0.229	2 (5)	20 (7)	1.000
Homeless	0 (0)	0 (0)	–	0 (0)	1 (0)	1.000	2 (5)	12 (5)	0.698
Financial problems	0 (0)	3 (1)	1.000	0 (0)	4 (2)	1.000	9 (23)	91 (34)	0.219
Legal proceedings against the individual	0 (0)	0 (0)	–	1 (3)	4 (2)	0.500	4 (10)	18 (7)	0.503

^aProportions are compared with Chi-square or Fisher exact tests depending on the marginal probabilities.

evidence that childhood sexual assault leads to higher risk of suicidal outcomes (30). However, our results suggest that the specific effects of sexual victimization during puberty, for which evidence remain scarce, may deserve specific attention. In addition, 20 and 30% of individuals who died in late adolescence were exposed to the suicide of a close relative—including family members—during infancy and young adolescence, respectively. Beyond the genetic and epigenetic endowments and/or shared adverse living conditions that may be implied, such aggregation raises questions about a possible suicidal contagion process. In the past 3 decades, researchers have provided epidemiological (43) and experimental (44) evidence that exposure to a suicide model may contribute to precipitating suicidal behaviors in vulnerable individuals, even several years after the index death (45). In our study, the role of contagion as a proximal risk factor is worth considering, as almost 10% of the whole sample was exposed to the suicide of a close relative in the year prior to their death. However, the fact that the two classes differed in terms of suicide exposure during infancy and adolescence indicates that suicide contagion may also result from a longer term effect, possibly through implicit encryption and retention of the suicide model (46).

To our knowledge, this study is one of the largest psychological autopsy investigations with in-depth collection of ALE that have been carried out so far. However, several limitations need to be considered. First, a common concern about retrospective collection of ALE relates to information or recall biases. In our study, informants may have involuntarily omitted some of the events experienced by their relative due to oblivion or ignorance. The possibility of reporting filters related to stigma, shame, or guilt should also be taken into consideration. Also, the nature of relationship between informants and the deceased persons may have influenced the information that investigators obtained. However, in line with a long tradition of narrative exploration practices, we adopted proven measures to minimize information and/or recall biases and homogenize data collection: systematic semi-structured exploration of pre-specified ALE, minimization of resistances thanks to conversational-style interviews, use of memory anchors, stimulation of the recall efforts with calendars and photos and cross-checking of collected data from various sources (20). Although these precautions may not have fully compensated for the inaccuracies of subjective reporting procedures, it should be noted that possible information biases were likely comparable for the two classes. Of remarkable exception, the proportion of mental health issues in the family of origin as reported for the individuals who died as young adults was oddly low (5% in the 0–14 years period). By contrast, this proportion in the second class (16% in the same period) was more congruent with the literature about the role of parental psychopathology in vulnerability to suicide (47). Rather than a true difference, it is more likely that this observation reflects a differential underreporting effect, possibly in relation to infancy unsteady environments. Family history is indeed especially more difficult to document when children were placed in foster home, separated from siblings, or had little contact with adult family members. The greater frequency of isolation and conflicts in the first class could also have affected the possibility of informants to recall long-term

information about parents' mental health and suicidal behaviors. A second limitation is the absence of a comparison group, which prevents us from drawing any conclusion about the role of adolescence in determining whether a person follows a suicidal trajectory. Clearly, this question is of great clinical relevance and would deserve specific developmental investigation, possibly with the same approach as we used here. Finally, the expert rating procedure implied that BA values were available for 5-year periods. This time scale precluded precise examination of the developmental changes that occurred within the adolescence time slot. In future studies, researchers could consider developing alternative methods for transforming ALE data in order to gain in temporal acuity.

Notwithstanding these limits, our results provide original clinically-grounded evidence that developmental transformations characterizing adolescence translate in the suicidal process. These observations highlight the short-, but also longer term relevance that reinforcing clinical attention on adolescents' distress may have in terms of suicide prevention. Targeted intervention could encompass psychotherapeutic support to deal with family dysfunctional interactions and develop more efficient coping strategies.

DATA AVAILABILITY STATEMENT

The raw data supporting the conclusions of this article will be made available by the authors, without undue reservation.

ETHICS STATEMENT

The studies involving human participants were reviewed and approved by ethics review boards of the Douglas Mental Health University Institute, the Centre Hospitalier Universitaire Sainte-Justine and the Université du Québec en Outaouais. The patients/participants provided their written informed consent to participate in this study.

AUTHOR CONTRIBUTIONS

MS was responsible for the original idea of studying life trajectories and conceived the protocol. MS and NC collected the data and organized their quantitative transformation. C-EN conceived the idea of studying the specific role of adolescence in suicide trajectories. C-EN and NC performed preliminary data management. C-EN conducted the analysis with the help of GB. C-EN wrote the manuscript with support from MS, GV, and NC. MS and GV supervised the whole project. All authors contributed to the article and approved the submitted version.

FUNDING

This work was supported by the Fonds de recherche du Québec Société Culture and the Fonds de recherche du Québec-Santé, the Réseau québécois sur le suicide, les troubles de l'humeur et les troubles associés and the CHU de Lille.

ACKNOWLEDGMENTS

We thank Lucie Sharkey for the English editing of the manuscript. This manuscript has been released as a pre-print at bioRxiv (48).

REFERENCES

- World Health Organization. *WHO Mortality Database*. (2017) Available online at: http://www.who.int/healthinfo/mortality_data/en/
- Nock MK, Green JG, Hwang I, McLaughlin KA, Sampson NA, Zaslavsky AM, et al. Prevalence, correlates, and treatment of lifetime suicidal behavior among adolescents: results from the national comorbidity survey replication adolescent supplement. *JAMA Psychiatry*. (2013) 70:300. doi: 10.1001/2013.jamapsychiatry.55
- Rutter M, Sroufe LA. Developmental psychopathology: concepts and challenges. *Dev Psychopathol*. (2000) 12:265–96. doi: 10.1017/S0954579400003023
- Séguin M, Beauchamp G, Robert M, DiMambro M, Turecki G. Developmental model of suicide trajectories. *Br J Psychiatry*. (2014) 205:120–6. doi: 10.1192/bjp.bp.113.139949
- Turecki G, Brent DA. Suicide and suicidal behaviour. *Lancet*. (2016) 387:1227–39. doi: 10.1016/S0140-6736(15)00234-2
- van Heeringen K. Stress-diathesis model of suicidal behavior. In: Dwivedi Y, editor. *The Neurobiological Basis of Suicide*. Boca Raton, FL: CRC Press (2012) p. 113–24. doi: 10.1201/b12215-7
- Danese A, McEwen BS. Adverse childhood experiences, allostasis, allostatic load, and age-related disease. *Physiol Behav*. (2012) 106:29–39. doi: 10.1016/j.physbeh.2011.08.019
- Compas BE. Coping, regulation, and development during childhood and adolescence. *N Dir Child Adolesc Dev*. (2009) 2009:87–99. doi: 10.1002/cd.245
- McEwen BS. Protective and damaging effects of stress mediators. *N Engl J Med*. (1998) 338:171–9. doi: 10.1056/NEJM199801153380307
- McEwen BS, Wingfield JC. The concept of allostasis in biology and biomedicine. *Horm Behav*. (2003) 43:2–15. doi: 10.1016/S0018-506X(02)00024-7
- Czyz EK, King CA. Longitudinal trajectories of suicidal ideation and subsequent suicide attempts among adolescent inpatients. *J Clin Child Adolesc Psychol*. (2015) 44:181–93. doi: 10.1080/15374416.2013.836454
- Rueter MA, Holm KE, McGeorge CR, Conger RD. Adolescent suicidal ideation subgroups and their association with suicidal plans and attempts in young adulthood. *Suicide Life Threat Behav*. (2008) 38:564–75. doi: 10.1521/suli.2008.38.5.564
- Séguin M, Renaud J, Lesage A, Robert M, Turecki G. Youth and young adult suicide: A study of life trajectory. *J Psychiatr Res*. (2011) 45:863–70. doi: 10.1016/j.jpsychires.2011.05.005
- Lupien SJ, McEwen BS, Gunnar MR, Heim C. Effects of stress throughout the lifespan on the brain, behaviour and cognition. *Nat Rev Neurosci*. (2009) 10:434–45. doi: 10.1038/nrn2639
- Schneider B, Maurer K, Sargk D, Heiskel H, Weber B, Frölich L, et al. Concordance of DSM-IV axis I and II diagnoses by personal and informant's interview. *Psychiatry Research*. (2004) 127:121–136. doi: 10.1016/j.psychres.2004.02.015
- Dumais A, Lesage AD, Lalovic A, Séguin M, Tousignant M, Chawky N, et al. Is violent method of suicide a behavioral marker of lifetime aggression? *AJP*. (2005) 162:1375–8. doi: 10.1176/appi.ajp.162.7.1375
- Zhang J, Conwell Y, Wiczorek WF, Jiang C, Jia S, Zhou L. Studying Chinese suicide with proxy-based data: reliability and validity of the methodology and instruments in China. *J Nerv Ment Dis*. (2003) 191:450–7. doi: 10.1097/01.NMD.0000081613.03157.D9
- Kim CD, Lesage A, Seguin M, Chawky N, Vanier C, Lipp O, et al. Patterns of co-morbidity in male suicide completers. *Psychol Med*. (2003) 33:1299–309. doi: 10.1017/S0033291703008146
- Brown GW, Harris T. *Social Origins of Depression: A Study of Psychiatric Disorder in Women*. Abingdon: Routledge (1978).
- Conner KR, Beautrais AL, Brent DA, Conwell Y, Phillips MR, Schneider B. The next generation of psychological autopsy studies: part I. Interview content. *Suicide Life Threat Behav*. (2011) 41:594–613. doi: 10.1111/j.1943-278X.2011.00057.x
- Conner KR, Conwell Y, Duberstein PR. The validity of proxy-based data in suicide research: a study of patients 50 years of age and older who attempted suicide. II. Life events, social support and suicidal behavior. *Acta Psychiatr Scand*. (2001) 104:452–7. doi: 10.1034/j.1600-0447.2001.00091.x
- Proust-Lima C, Séne M, Taylor JM, Jacqmin-Gadda H. Joint latent class models for longitudinal and time-to-event data: a review. *Stat Methods Med Res*. (2014) 23:74–90. doi: 10.1177/0962280212445839
- Qiu F, Stein CM, Elston RC, for the Tuberculosis Research Unit (TBRU). Joint modeling of longitudinal data and discrete-time survival outcome. *Stat Methods Med Res*. (2016) 25:1512–26. doi: 10.1177/0962280213490342
- Wu AD, Zumbo BD, Siegel LS. General piecewise growth mixture model: word recognition development in different learners in different phases. *J Mod App Stat Meth*. (2011) 10:226–48. doi: 10.22237/jmasm/1304223600
- Muthén B, Asparouhov T, Hunter AM, Leuchter AF. Growth modeling with nonignorable dropout: alternative analyses of the STAR*D antidepressant trial. *Psychol Methods*. (2011) 16:17–33. doi: 10.1037/a0022634
- Muthén LK, Muthén BO. *Mplus User's Guide*. 7th ed. Los Angeles, CA: Muthén & Muthén (1998).
- Team C. R. *A Language and Environment for Statistical Computing*. Vienna: R Foundation for Statistical Computing (2014).
- Brezo J, Paris J, Vitaro F, Hébert M, Tremblay RE, Turecki G. Predicting suicide attempts in young adults with histories of childhood abuse. *Br J Psychiatry*. (2008) 193:134–9. doi: 10.1192/bjp.bp.107.037994
- Dube SR, Anda RF, Felitti VJ, Chapman DP, Williamson DF, Giles WH. Childhood abuse, household dysfunction, and the risk of attempted suicide throughout the life span: findings from the adverse childhood experiences study. *JAMA*. (2001) 286:3089. doi: 10.1001/jama.286.24.3089
- Lopez-Castroman J, Melhem N, Birmaher B, Greenhill L, Kolko D, Stanley B, et al. Early childhood sexual abuse increases suicidal intent. *World Psychiatry*. (2013) 12:149–154. doi: 10.1002/wps.20039
- King CA, Merchant CR. Social and interpersonal factors relating to adolescent suicidality: a review of the literature. *Arch Suicide Res*. (2008) 12:181–96. doi: 10.1080/13811110802101203
- Richters J, Martinez P. Violent communities, family choices, and children's chances: An algorithm for improving the odds. *Dev Psychopathol*. (1993) 5:609–27. doi: 10.1017/S0954579400006192
- Romeo RD. The teenage brain: the stress response and the adolescent brain. *Curr Dir Psychol Sci*. (2013) 22:140–5. doi: 10.1177/0963721413475445
- Eiland L, Romeo RD. Stress and the developing adolescent brain. *Neuroscience*. (2013) 249:162–71. doi: 10.1016/j.neuroscience.2012.10.048
- Romeo RD. The impact of stress on the structure of the adolescent brain: implications for adolescent mental health. *Brain Res*. (2017) 1654:185–91. doi: 10.1016/j.brainres.2016.03.021
- Romeo RD. Pubertal maturation and programming of hypothalamic-pituitary-adrenal reactivity. *Front Neuroendocrinol*. (2010) 31:232–40. doi: 10.1016/j.yfrne.2010.02.004
- Fergusson DM, Horwood LJ. Vulnerability to life events exposure. *Psychol Med*. (1987) 17:739. doi: 10.1017/S0033291700025976
- Nelson B, McGorry PD, Wichers M, Wigman JT, Hartmann JA. Moving from static to dynamic models of the onset of mental disorder: a review. *JAMA Psychiatry*. (2017) 74:528. doi: 10.1001/jamapsychiatry.2017.0001
- Del Giudice M, Ellis BJ, Shirtcliff EA. The adaptive calibration model of stress responsivity. *Neurosci Biobehav Rev*. (2011) 35:1562–92. doi: 10.1016/j.neubiorev.2010.11.007

SUPPLEMENTARY MATERIAL

The Supplementary Material for this article can be found online at: <https://www.frontiersin.org/articles/10.3389/fpsy.2020.557131/full#supplementary-material>

40. Cox MJ, Mills-Koonce R, Propper C, Gariépy J-L. Systems theory and cascades in developmental psychopathology. *Dev Psychopathol.* (2010) 22:497–506. doi: 10.1017/S0954579410000234
41. Benarous X, Consoli A, Cohen D, Renaud J, Lahaye H, Guilé J-M. Suicidal behaviors and irritability in children and adolescents: a systematic review of the nature and mechanisms of the association. *Eur Child Adolesc Psychiatry.* (2019) 28:667–83. doi: 10.1007/s00787-018-1234-9
42. Neeleman J, de Graaf R, Vollebergh W. The suicidal process; prospective comparison between early and later stages. *J Affect Disord.* (2004) 82:43–52. doi: 10.1016/j.jad.2003.09.005
43. Pirkis J, Blood RW. *Suicide and the News and Information Media. A Critical Review.* Newcastle: Mind Frame Media (2010).
44. Till B, Vitouch P, Herberth A, Sonneck G, Niederkrotenthaler T. Personal suicidality in reception and identification with suicidal film characters. *Death Stud.* (2013) 37:383–92. doi: 10.1080/07481187.2012.673531
45. Hegerl U, Koburger N, Rummel-Kluge C, Gravert C, Walden M, Mergl R. One followed by many?—Long-term effects of a celebrity suicide on the number of suicidal acts on the German railway net. *J Affect Disord.* (2013) 146:39–44. doi: 10.1016/j.jad.2012.08.032
46. Arendt F, Till B, Niederkrotenthaler T. Effects of suicide awareness material on implicit suicide cognition: a laboratory experiment. *Health Commun.* (2015) 31:718–26. doi: 10.1080/10410236.2014.993495
47. Gureje O, Oladeji B, Hwang I, Chiu WT, Kessler RC, Sampson NA, et al. Parental psychopathology and the risk of suicidal behavior in their offspring: results from the world mental health surveys. *Mol Psychiatry.* (2011) 16:1221–33. doi: 10.1038/mp.2010.111
48. Notredame C-E, Chawky N, Beauchamp G, Vaiva G, Séguin M. Life trajectories towards suicide: developmental role and specificities of adolescence. *bioRxiv.* (2020). doi: 10.1101/2020.01.18.911230

Conflict of Interest: The authors declare that the research was conducted in the absence of any commercial or financial relationships that could be construed as a potential conflict of interest.

Copyright © 2020 Notredame, Chawky, Beauchamp, Vaiva and Séguin. This is an open-access article distributed under the terms of the Creative Commons Attribution License (CC BY). The use, distribution or reproduction in other forums is permitted, provided the original author(s) and the copyright owner(s) are credited and that the original publication in this journal is cited, in accordance with accepted academic practice. No use, distribution or reproduction is permitted which does not comply with these terms.