



Disease Severity in Treatment Resistant Schizophrenia Patients Is Mainly Affected by Negative Symptoms, Which Mediate the Effects of Cognitive Dysfunctions and Neurological Soft Signs

Felice Iasevoli*, Camilla Avagliano, Benedetta Altavilla, Annarita Barone, Luigi D'Ambrosio, Marta Matrone, Danilo Notar Francesco, Eugenio Razzino and Andrea de Bartolomeis

OPEN ACCESS

Section of Psychiatry - Unit on Treatment Resistant Psychosis, Laboratory of Molecular and Translational Psychiatry, Department of Neuroscience, University School of Medicine Federico II, Naples, Italy

Edited by:

Blazej Misiak,
Wroclaw Medical University, Poland

Reviewed by:

Xijia Xu,
Nanjing Brain Hospital Affiliated to
Nanjing Medical University, China
Daniel Berge,
Institut Hospital del Mar
d'Investigacions Mèdiques (IMIM),
Spain

*Correspondence:

Felice Iasevoli
felice.iasevoli@unina.it

Specialty section:

This article was submitted to
Schizophrenia,
a section of the journal
Frontiers in Psychiatry

Received: 17 September 2018

Accepted: 15 October 2018

Published: 31 October 2018

Citation:

Iasevoli F, Avagliano C, Altavilla B, Barone A, D'Ambrosio L, Matrone M, Notar Francesco D, Razzino E and de Bartolomeis A (2018) Disease Severity in Treatment Resistant Schizophrenia Patients Is Mainly Affected by Negative Symptoms, Which Mediate the Effects of Cognitive Dysfunctions and Neurological Soft Signs. *Front. Psychiatry* 9:553. doi: 10.3389/fpsy.2018.00553

This *post-hoc* study was aimed at assessing whether disease severity was higher in a sample of Treatment Resistant Schizophrenia patients (TRS) compared to schizophrenia patients responsive to antipsychotics (non-TRS). Determinants of disease severity were also investigated in these groups. Eligible patients were screened by standardized diagnostic algorithm to categorize them as TRS or non-TRS. All patients underwent the following assessments: CGI-S; PANSS; DAI; NES; a battery of cognitive tests. Socio-demographic and clinical variables were also recorded. TRS patients exhibited significantly higher disease severity and psychotic symptoms, either as PANSS total score or subscales' scores. A preliminary correlation analysis ruled out clinical and cognitive variables not associated with disease severity in the two groups. Hierarchical linear regression showed that negative symptoms were the clinical variable explaining the highest part of variation in disease severity in TRS, while in non-TRS patients PANSS-General Psychopathology was the variable explaining the highest variation. Mediation analysis showed that negative symptoms mediate the effects of verbal fluency dysfunctions and high-level neurological soft signs (NSS) on TRS' disease severity. These results show that determinants of disease severity sharply differ in TRS and non-TRS patients, and let hypothesize that TRS may stem from cognitive dysfunctions and putatively neurodevelopmental aberrations.

Keywords: psychosis, refractory, clozapine, antipsychotics, positive symptoms, response

INTRODUCTION

Treatment Resistant Schizophrenia (TRS) is a major challenge in clinical management and therapy of schizophrenia (1), which *per se* is among the most relevant causes of morbidity worldwide (2). TRS is defined as the lack of response to a number of antipsychotic agents, which causes the patients to be actively symptomatic and to not gain symptom remission and functional recovery (3).

Accordingly, TRS has been associated to more severe social disability (4), whose determinants appear to strongly diverge from that in responder schizophrenia patients (i.e., non-TRS) (5, 6). Also, TRS may represent a categorically distinct subtype of schizophrenia (7), as also suggested by clinical data showing higher severity of neurological soft signs (NSS) in these patients (8), a marker of aberrant brain development (9).

In this study, we evaluated whether disease severity differed in TRS vs. non-TRS patients. As a subsequent step, we tried to delineate the clinical factors influencing disease severity in these two groups.

METHODS

This *post-hoc* analysis used data from a previous cross-sectional naturalistic study (6). Patients' recruitment continued after the above-mentioned report, and therefore the present study includes data from an expanded sample compared to that earlier one.

Patients were referred to our academic Outpatient Unit on Treatment Resistant Psychosis, University "Federico II" of Naples, by community psychiatrists for evaluation of putative TRS, as they suffered from psychotic symptoms apparently non-responding to antipsychotic agents. All consecutive patients meeting criteria for eligibility were recruited.

Inclusion criteria were: (i) age within the 18–65-year range; (ii) diagnosis of schizophrenia; (iii) being treated with antipsychotics; (iv) stabilized symptoms, including persistent psychotic symptoms with no evidence of actual or recent (i.e., in the last 3 months prior assessments) worsening. Exclusion criteria were: (i) intellectual disability (according to DSM-5 diagnostic criteria); (ii) severe medical diseases; (iii) non-schizophrenia psychotic disorders; (iv) psychotic symptoms due to another medical condition or to substances/medications.

All patients signed a written informed consent form, approved by the local Ethical Committee. All procedures carried out herein complied with the principles laid down by the Declaration of Helsinki, revised Hong Kong 1989.

A preliminary screening procedure was carried out for identifying non-schizophrenia psychotic disorders, pseudo-TRS, non-TRS, and TRS patients. This procedure has been described elsewhere (6). For all patients, the following set of clinical-demographic data were recorded: age; gender; education years; age at disease onset (AaO); duration of illness (DoI); age at first psychiatric evaluation; history of substance, alcohol, or drug abuse; everyday living functional milestones (4). The following rating scales were administered by two experienced raters: the Clinical Global Impression-Severity (CGI-S); the Positive and Negative Syndrome Scale (PANSS); the Neurological Evaluation Scale (NES) (10); the Drug Attitude Inventory (11).

Patients were assessed for the following cognitive domains' performances: Sustained and Selective Attention by the Continuous Performance Task (CPT); Verbal Memory by the List Learning task; Visuospatial Memory (VSM) by the Brief Visuospatial Memory test-Revisited; Working Memory by the Digit Sequencing task; Verbal Fluency by the Category Instances

task and the Controlled Oral Word Association test; Problem Solving by the Tower of London task; Speed of Information Processing by the Symbol Coding task. Raw data from each task were adjusted in corrected scores, according to values in the Italian normative population (12–14). High corrected scores corresponded to better preservation of cognitive status.

All statistical procedures were carried out by using the SPSS 24.0[®]. Descriptive statistics were used to report clinical and socio-demographic data. Independent-sample Student's *T*-test was used to compare quantitative data among diagnostic groups. In all tests, significance was set at $p < 0.05$ (two-tailed). Analysis of correlation was performed by Pearson's or Spearman's test, for continuous and categorical variables respectively. Multivariate linear regression analysis was used to perform both hierarchical linear regression (HLR) and mediation analyses.

RESULTS

Group Comparison

A total of 73 schizophrenia patients enrolled in the study were subdivided in TRS ($n = 41$) and non-TRS ($n = 32$) ones. Age [$t_{(1,71)} = 1.66$; $p > 0.05$], gender ($\chi = 1.64$; $p > 0.05$), and education age [$t_{(1,71)} = 1.45$; $p > 0.05$] were not significantly different between groups. Disease severity and psychotic symptoms were significantly more severe in TRS patients compared to non-TRS [Student's *t*-test; CGI-S: $t_{(1,71)} = 3.48$; $p = 0.001$; PANSS Positive Score: $t_{(1,71)} = 1.92$; $p = 0.059$; PANSS Negative Score: $t_{(1,71)} = 3.99$; $p < 0.0005$; PANSS General Psychopathology (GP) Score: $t_{(1,71)} = 3.21$; $p = 0.002$; PANSS Total Score: $t_{(1,71)} = 3.79$; $p < 0.0005$] (Figure 1).

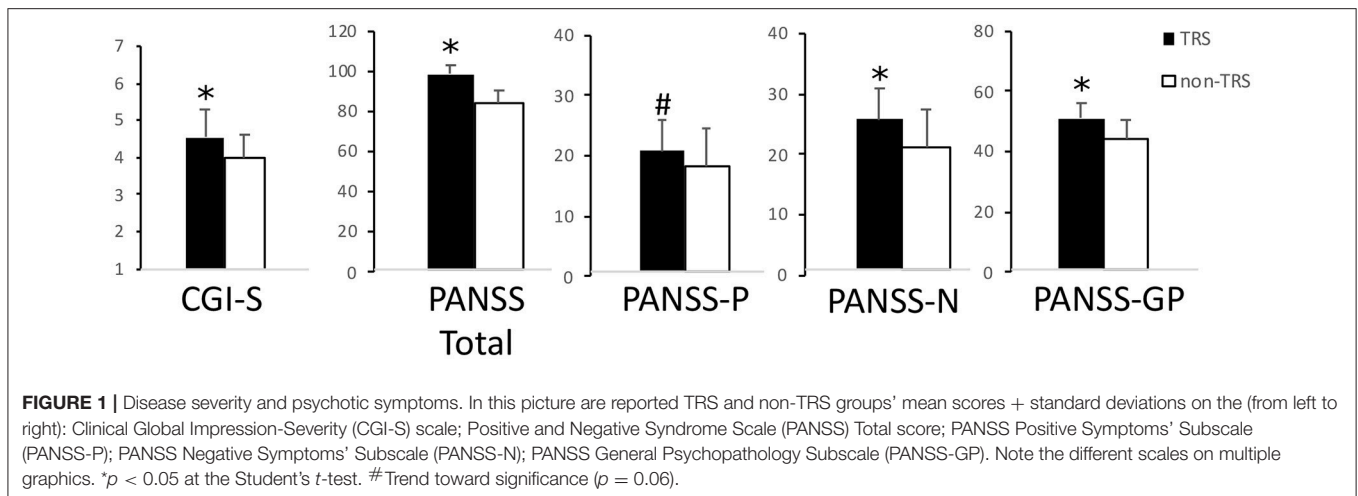
Correlation Analysis

In TRS patients, Pearson's test revealed significant positive correlations between disease severity and psychotic symptoms (PANSS Positive: $r = 0.51$, $p = 0.001$; PANSS Negative: $r = 0.59$, $p < 0.0005$; PANSS-GP: $r = 0.58$, $p < 0.0005$) or NSS (NES score: $r = 0.44$, $p = 0.005$), and inverse significant correlations between disease severity and verbal fluency performances ($r = -0.35$, $p = 0.03$) or VSM score ($r = -0.33$, $p = 0.03$).

In non-TRS patients, disease severity showed significant negative correlations with age ($r = -0.38$, $p = 0.03$) and duration of disease ($r = -0.36$, $p = 0.04$) and significant positive correlations with psychopathology (PANSS Positive: $r = 0.50$, $p = 0.004$; PANSS Negative: $r = 0.41$, $p = 0.02$; PANSS-GP: $r = 0.56$, $p = 0.001$), but not with NSS. Lifetime work occupation ($\rho = -0.37$, $p = 0.03$), residential status ($\rho = -0.40$; $p = 0.02$), and history of drug abuse ($\rho = 0.42$; $p = 0.02$) were also significantly correlated with disease severity at the Spearman's ρ test in these patients.

Hierarchical Linear Regression

We used a hierarchical linear regression (HLR) approach to evaluate which variables explained the most part of variation in CGI-S score. PANSS Negative score was the variable that explained the most variance in CGI-S (Model 1: $F = 21.22$; $p < 0.0005$; $R^2 = 0.36$; standardized $\beta = 0.599$). PANSS Positive score was the only other variable whose addition in the model led to



a statistically significant increase in R^2 (Model 2: $F = 17.87$; $p < 0.0005$; $R^2 = 0.49$; standardized β PANSS Negative = 0.492; standardized β PANSS Positive = 0.380).

In non-TRS patients, the HLR approach showed that inclusion of PANSS-GP score explained substantial variation in CGI-S (Model 1: 13.64; $p = 0.001$; $R^2 = 0.313$; standardized $\beta = 0.559$) and no other variable added significant variation to the equation.

Mediation Analysis

In order to make the relationships among these variables clearer, we performed a series of mediation analysis based on the Baron and Kenny four-step model (15). We started from the hypothesis that the variables responsible for the highest variance in HLR may mediate the relations with disease severity of the variables found associated to CGI-S in the correlation analysis.

According to correlation analysis, all variables included in the regression analysis were significant predictors of the outcome variable CGI-S (Step 1).

In TRS patients, the putative mediator variables were PANSS Negative score or PANSS Positive score. Verbal Fluency, NSS, and PANSS Positive score were significant predictors of the outcome variable PANSS Negative score (Step 2), while VSM score and PANSS-GP were not (Step 2 not met; analysis stopped). PANSS Negative score was significantly predictive of the outcome variable CGI-S when controlled for either Verbal Fluency, NSS, or PANSS Positive (Step 3). Verbal Fluency and NSS were no more significantly predictive of CGI-S score when controlled for PANSS Negative (Step 4), indicating that their relations with CGI-S may be partially mediated by negative symptoms. On the contrary, PANSS Positive was still significantly predictive of CGI-S when controlled for PANSS Negative, indicating that negative symptoms did not mediate the relation between positive symptoms and disease severity. VSM score, however, was significantly predictive of the outcome variable PANSS Positive (Step 2). PANSS Positive was predictive of CGI-S score after controlling for VSM score (Step 3), while VSM score was no more significantly predictive of CGI-S score after controlling for PANSS Positive (Step 4), thereby indicating that the relation

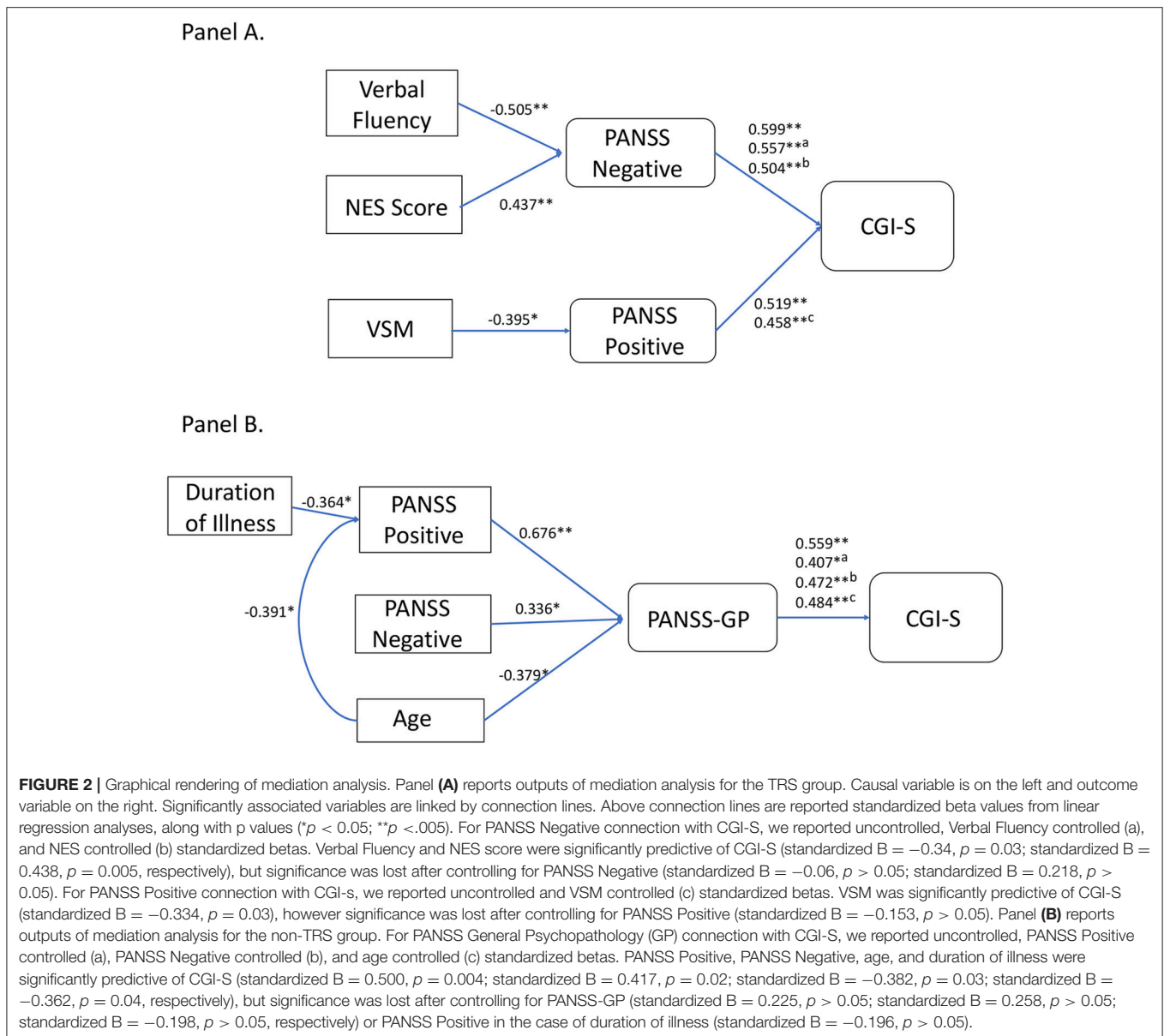
between VSM and CGI-S was partially mediated by positive symptoms. Alternative models, using different combinations of causal and moderator variables, were investigated, however none of these yielded significant results (data not shown). The results of this analysis are illustrated in **Figure 2A**.

In non-TRS patients, mediation analysis showed that the most important mediator variable was PANSS-GP, which agreed with results of the HLR. Among the variables correlated with CGI-S, PANSS Positive, PANSS Negative, and age were significantly predictive of the outcome variable PANSS-GP (Step 2). PANSS Positive, PANSS Negative, and age were no more significantly predictive of CGI-S score when controlled for PANSS-GP (Step 3). PANSS-GP was still significantly predictive of CGI-S score after controlling for PANSS Positive, PANSS Negative, or age (Step 4). Alternative models were also investigated. The only other significant mediation model was found for PANSS Positive as a mediation variable for age and duration of illness effects on CGI-S. The results of this analysis are illustrated in **Figure 2B**.

DISCUSSION

The present work was aimed at dissecting some of the distinctive clinical features that affect disease severity in schizophrenia patients responsive to antipsychotic medications compared to TRS ones. We observed directional relationships among the variables accounted herein and disease severity, that were sharply divergent for TRS and non-TRS. Indeed, TRS has been considered a unique neurobiological clinical entity (16–18), with its proper pathophysiology, clinical presentation, and disease course (5, 7). The differences in clinical determinants of disease severity found in the present study comply with this view.

Notably, in TRS patients the most relevant clinical variable in determining disease severity was found to be the extent of negative symptoms. The impact of negative symptoms on disease severity does not appear attributable to their higher severity in TRS, since global psychotic symptoms as well as each psychotic symptom domain have been found more severe in TRS compared to non-TRS patients herein. Indeed, the



association between negative symptoms and lack of response to antipsychotics had been classically reported (19, 20). Also, it has to be noted that, although being less severe than in TRS patients, the most relevant clinical variable in determining disease severity in non-TRS patients was PANSS General Psychopathology subscale score, which in turn accounts for the effects on disease severity of positive symptoms, negative symptoms, and duration of the illness. These elements let hypothesize a tight and putatively neurobiologically-determined connection between negative symptoms and TRS, affecting disease severity.

Relevance of negative symptoms on disease severity in TRS patients may lead to two alternative explanations: (i) patients with a larger extent of negative symptoms are considered to be TRS since these symptoms may not be impacted by antipsychotic agents; indeed, a large metanalysis of randomized

placebo-controlled trials failed to find significant clinical effects of antipsychotics on negative symptoms (21); (ii) patients with a TRS suffer from a neurobiologically distinct form of the disease, which express symptomatically with prominent alterations in cognitive and negative symptoms. Indeed, there is strong evidence that cognitive dysfunctions are strictly interconnected with negative symptoms (22, 23).

The cross-sectional nature of this study does not allow to solve this issue. However, some clarifications may derive from mediation analysis. In TRS patients, mediation analysis showed that negative and positive symptoms directly and independently affected disease severity. Negative symptoms partially mediated the effects on disease severity of verbal fluency deficits and high-level neurological soft signs. Positive symptoms partially mediated the effects of visuospatial memory deficits. These

data imply a strong distal effect of cognitive dysfunctions and neurological soft signs on psychopathology and disease severity in TRS patients. It has been proposed that cognitive deficits in schizophrenia may underlie proper and distinct neurobiology (24). Also, cognitive deficits and severe neurological soft signs may stem from more relevant neurodevelopmental aberrations in schizophrenia patients. Therefore, it should be hypothesized that TRS patients are a subset of schizophrenia patients whose relevant cognitive deficits and high-level neurological soft signs, of putative neurodevelopmental origin, in turn determine severe negative and positive symptoms, affecting disease severity. These theoretical causal inferences need to be demonstrated by means of *ad hoc* designed longitudinal designs.

Notably, determinants of disease severity are sharply divergent and do not involve neurological soft signs or cognitive alterations. Indeed, in non-TRS patients, general psychopathology partially mediated the effects of positive and negative symptoms, age, and duration of illness on disease severity. These results suggest that other clinical variables, not accounted herein, may have a major role in determining disease severity in non-TRS patients.

The results of this study should be interpreted in the light of its limitations: the sample size was relatively small, although

TRS is a subpopulation of the whole schizophrenia patients and a representative sample is expected to be lower than that needed to study schizophrenia; rating scale scores may have been partially biased by antipsychotic treatment; selection of non-TRS patients was among patients initially suspected to be non-responsive to antipsychotic regimens and for this reason referred to our specialist unit, which may cause inclusion of severe, albeit non-TRS, patients and may mitigate differences with TRS patients.

AUTHOR CONTRIBUTIONS

FI and AdB designed the study. CA, BA, AB, MM, LD, DN, and ER recruited the patients and administered assessment tools. FI carried out data analysis. FI and AdB wrote the manuscript. All authors read, corrected, and approved the manuscript in its final form.

ACKNOWLEDGMENTS

We thank the staff of the Unit on Treatment Resistant Psychosis of the University of Naples Federico II for all help in recruiting patients for this study.

REFERENCES

- Kennedy JL, Altar CA, Taylor DL, Degtiar I, Hornberger JC. The social and economic burden of treatment-resistant schizophrenia: a systematic literature review. *Int Clin Psychopharmacol.* (2014) 29:63–76. doi: 10.1097/YIC.0b013e32836508e6
- Charlson FJ, Ferrari AJ, Santomauro DF, Diminic S, Stockings E, Scott JG, et al. Global epidemiology and burden of schizophrenia: findings from the global burden of disease study 2016. *Schizophr Bull.* (2018) 44:1195–203. doi: 10.1093/schbul/sby058
- Howes OD, McCutcheon R, Agid O, de Bartolomeis A, van Beveren NJ, Birnbaum ML, et al. Treatment-Resistant Schizophrenia: Treatment Response and Resistance in Psychosis (TRRIP) working group consensus guidelines on diagnosis and terminology. *Am J Psychiatry* (2017) 174:216–29. doi: 10.1176/appi.ajp.2016.16050503
- Iasevoli F, Giordano S, Balletta R, Latte G, Formato MV, Prinziavalli E, et al. Treatment resistant schizophrenia is associated with the worst community functioning among severely-ill highly-disabling psychiatric conditions and is the most relevant predictor of poorer achievements in functional milestones. *Prog Neuropsychopharmacol Biol Psychiatry* (2016) 65:34–48. doi: 10.1016/j.pnpbp.2015.08.010
- Iasevoli F, Avagliano C, Altavilla B, Barone A, Ciccarella M, D'Ambrosio L, et al. Evaluation of a few discrete clinical markers may predict categorization of actively symptomatic non-acute schizophrenia patients as treatment resistant or responders: a study by ROC curve analysis and multivariate analyses. *Psychiatry Res.* (2018) 269:481–93. doi: 10.1016/j.psychres.2018.08.109
- Iasevoli F, D'Ambrosio L, Notar Francesco D, Razzino E, Buonaguro EF, Giordano S, et al. Clinical evaluation of functional capacity in treatment resistant schizophrenia patients: comparison and differences with non-resistant schizophrenia patients. *Schizophr Res.* (2018). doi: 10.1016/j.schres.2018.06.030. [Epub ahead of print].
- Gillespie AL, Samanaite R, Mill J, Egerton A, MacCabe JH. Is treatment-resistant schizophrenia categorically distinct from treatment-responsive schizophrenia? a systematic review. *BMC Psychiatry* (2017) 17:12. doi: 10.1186/s12888-016-1177-y
- de Bartolomeis A, Prinziavalli E, Callovin G, D'Ambrosio L, Altavilla B, Avagliano C, et al. Treatment resistant schizophrenia and neurological soft signs may converge on the same pathology: evidence from explanatory analysis on clinical, psychopathological, and cognitive variables. *Prog Neuropsychopharmacol Biol Psychiatry* (2018) 81:356–66. doi: 10.1016/j.pnpbp.2017.09.002
- Compton MT, Bollini AM, McKenzie Mack L, Kryda AD, Rutland J, Weiss PS, et al. Neurological soft signs and minor physical anomalies in patients with schizophrenia and related disorders, their first-degree biological relatives, and non-psychiatric controls. *Schizophr Res.* (2007) 94:64–73. doi: 10.1016/j.schres.2007.04.002
- Buchanan RW, Heinrichs DW. The Neurological Evaluation Scale (NES): a structured instrument for the assessment of neurological signs in schizophrenia. *Psychiatry Res.* (1989) 27:335–50. doi: 10.1016/0165-1781(89)90148-0
- Iasevoli F, Fagioli A, Formato MV, Prinziavalli E, Giordano S, Balletta R, et al. Assessing patient-rated vs. clinician-rated adherence to the therapy in treatment resistant schizophrenia, schizophrenia responders, and non-schizophrenia patients. *Psychiatry Res.* (2017) 249:159–66. doi: 10.1016/j.psychres.2017.01.015
- Anselmetti S, Poletti S, Ermoli E, Bechi M, Cappa S, Venneri A, et al. The Brief Assessment of Cognition in Schizophrenia. Normative data for the Italian population. *Neurol Sci.* (2008) 29:85–92. doi: 10.1007/s10072-008-0866-9
- Galderisi S, Rossi A, Rocca P, Bertolino A, Mucci A, Bucci P, et al. The influence of illness-related variables, personal resources and context-related factors on real-life functioning of people with schizophrenia. *World Psychiatry* (2014) 13:275–87. doi: 10.1002/wps.20167
- Iasevoli F, Balletta R, Gilardi V, Giordano S, de Bartolomeis A. Tobacco smoking in treatment-resistant schizophrenia patients is associated with impaired cognitive functioning, more severe negative symptoms, and poorer social adjustment. *Neuropsychiatr Dis Treat.* (2013) 9:1113–20. doi: 10.2147/NDT.S47571
- Hayes AF. Beyond Baron and Kenny: statistical mediation analysis in the new millennium. *Commun Monogr.* (2009) 76:408–20. doi: 10.1080/03637750903310360
- Kim E, Howes OD, Veronese M, Beck K, Seo S, Park JW, et al. Presynaptic dopamine capacity in patients with treatment-resistant schizophrenia taking clozapine: an [(18)F]DOPA PET study. *Neuropsychopharmacology* (2017) 42:941–50. doi: 10.1038/npp.2016.258

17. Mouchlianitis E, McCutcheon R, Howes OD. Brain-imaging studies of treatment-resistant schizophrenia: a systematic review. *Lancet Psychiatry* (2016) 3:451–63. doi: 10.1016/S2215-0366(15)00540-4
18. Mouchlianitis E, Bloomfield MA, Law V, Beck K, Selvaraj S, Rasquinha N, et al. Treatment-resistant schizophrenia patients show elevated anterior cingulate cortex glutamate compared to treatment-responsive. *Schizophr Bull.* (2016) 42:744–52. doi: 10.1093/schbul/sbv151
19. Leucht S, Corves C, Arbter D, Engel RR, Li C, Davis JM. Second-generation versus first-generation antipsychotic drugs for schizophrenia: a meta-analysis. *Lancet* (2009) 373:31–41. doi: 10.1016/S0140-6736(08)61764-X
20. Leucht S, Komossa K, Rummel-Kluge C, Corves C, Hunger H, Schmid F, et al. A meta-analysis of head-to-head comparisons of second-generation antipsychotics in the treatment of schizophrenia. *Am J Psychiatry* (2009) 166:152–63. doi: 10.1176/appi.ajp.2008.08030368
21. Fusar-Poli P, Papanastasiou E, Stahl D, Rocchetti M, Carpenter W, Shergill S, et al. Treatments of negative symptoms in schizophrenia: meta-analysis of 168 randomized placebo-controlled trials. *Schizophr Bull.* (2015) 41:892–9. doi: 10.1093/schbul/sbu170
22. Sevy S, Khan A, Lindenmayer JP, McGurk S, Paker B, Ljuri I, et al. Cognitive correlates of the negative symptoms expressive and experiential deficit factors in psychosis. *Schizophrenia Bull.* (2018) 44:S244–S. doi: 10.1093/schbul/sby017.594
23. Lim J, Lee SA, Lam M, Rapisarda A, Kraus M, Keefe RS, et al. The relationship between negative symptom subdomains and cognition. *Psychol Med.* (2016) 46:2169–77. doi: 10.1017/S0033291716000726
24. Neill JC, Barnes S, Cook S, Grayson B, Idris NF, McLean SL, et al. Animal models of cognitive dysfunction and negative symptoms of schizophrenia: focus on NMDA receptor antagonism. *Pharmacol Ther.* (2010) 128:419–32. doi: 10.1016/j.pharmthera.2010.07.004

Conflict of Interest Statement: The authors declare that the research was conducted in the absence of any commercial or financial relationships that could be construed as a potential conflict of interest.

Copyright © 2018 Iasevoli, Avagliano, Altavilla, Barone, D'Ambrosio, Matrone, Notar Francesco, Razzino and de Bartolomeis. This is an open-access article distributed under the terms of the Creative Commons Attribution License (CC BY). The use, distribution or reproduction in other forums is permitted, provided the original author(s) and the copyright owner(s) are credited and that the original publication in this journal is cited, in accordance with accepted academic practice. No use, distribution or reproduction is permitted which does not comply with these terms.