



# Correction to “Maternal neural responses to infant cries and faces: relationships with substance use”

Nicole Landi<sup>1\*</sup>, Jessica Montoya<sup>2</sup>, Hedy Kober<sup>2</sup>, Helena J. V. Rutherford<sup>1</sup>, W. Einar Mencl<sup>3</sup>, Patrick D. Worhunsky<sup>2</sup>, Marc N. Potenza<sup>2</sup> and Linda C. Mayes<sup>1</sup>

<sup>1</sup> Child Study Center, Yale University, New Haven, CT, USA

<sup>2</sup> Department of Psychiatry, Yale University, New Haven, CT, USA

<sup>3</sup> Haskins Laboratories, New Haven, CT, USA

\*Correspondence: nicole.landi@yale.edu

**Edited by:**

Ahmet O. Caglayan, Kayseri Education and Research Hospital, Turkey

**Reviewed by:**

Ahmet O. Caglayan, Kayseri Education and Research Hospital, Turkey

A commentary on

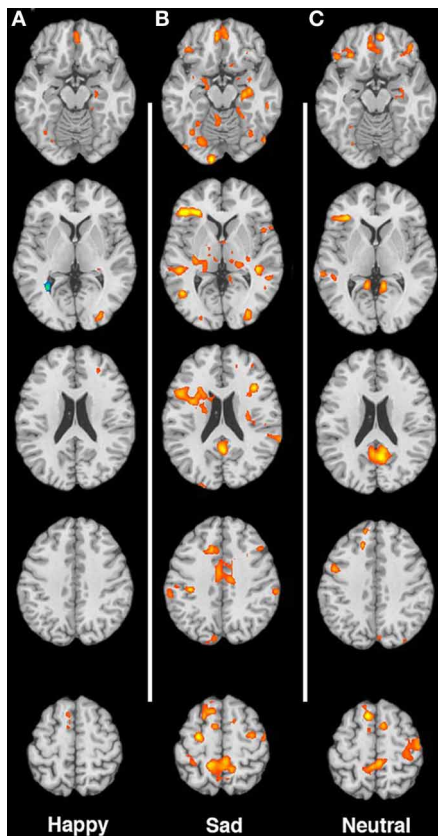
Mayes, L. C. (2011). *Front. Psychiatry* 2:32. doi: 10.3389/fpsy.2011.00032

**Maternal neural responses to infant cries and faces: relationships with substance use**

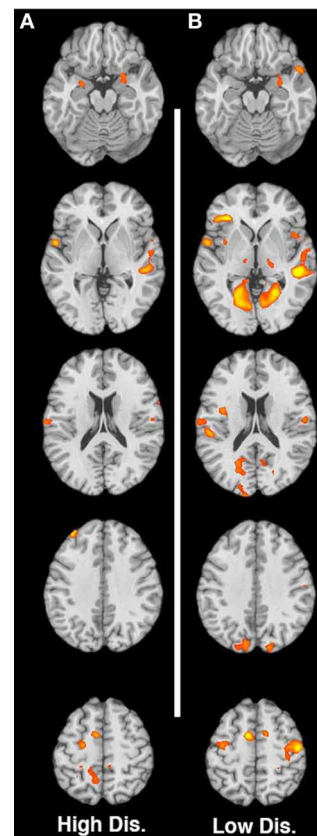
by Landi, N., Montoya, J., Kober, H., Rutherford, H. J. V., Mencl, W. E., Worhunsky, P. D., Potenza, M. N., and

The article “Maternal neural responses to infant cries and faces: relationships with substance use” by Landi et al. (2011), 2, 1–13 contains an error. Specifically **Figures 1 and 2**, were partially swapped,

with **Figure 1** displaying images in response to cries, and **Figure 2** displaying responses to faces. Both figures are presented correctly here, with the appropriate captions. All of the text and the tables in the manuscript are correct, this was the only error. We regret this mistake.



**FIGURE 1 | (A–C)** Contrast of non-using > substance-using mothers for happy, sad, and neutral faces, respectively. Images are shown in neurological convention, with the left hemisphere on the left side of each image. Slices are at MNI z-coordinate locations –19, –1, +17, +35, and +53 mm.



**FIGURE 2 | (A–B)** Contrast of non-using > substance-using for low-distress and high-distress cries respectively. Slices are at MNI z-coordinate locations –16, +2, +20, +38, and +56 mm.

Received: 17 December 2012; accepted: 19 December 2012; published online: 07 February 2013.

Citation: Landi N, Montoya J, Kober H, Rutherford HJV, Mencl WE, Worhunsky PD, Potenza MN and Mayes LC (2013) Correction to “Maternal neural responses to infant cries and faces: relationships

with substance use”. *Front. Psychiatry* 3:115. doi: 10.3389/fpsy.2012.00115

This article was submitted to *Frontiers in Child and Neurodevelopmental Psychiatry*, a specialty of *Frontiers in Psychiatry*.

Copyright © 2013 Landi, Montoya, Kober, Rutherford, Mencl, Worhunsky, Potenza and Mayes. This is an

open-access article distributed under the terms of the Creative Commons Attribution License, which permits use, distribution and reproduction in other forums, provided the original authors and source are credited and subject to any copyright notices concerning any third-party graphics etc.