



OPEN ACCESS

EDITED BY

Yukun Liu,
Southwest Forestry University, China

REVIEWED BY

Justyna Maria Labuz,
Jagiellonian University, Poland
Debarati Basu,
Silvec Biologics, United States

*CORRESPONDENCE

Sarah M. Assmann

✉ sma3@psu.edu

Yotam Zait

✉ yotam.zait@mail.huji.ac.il

RECEIVED 06 December 2023

ACCEPTED 17 January 2024

PUBLISHED 05 February 2024

CITATION

Zait Y, Joseph A and Assmann SM (2024)
Stomatal responses to VPD utilize guard
cell intracellular signaling components.
Front. Plant Sci. 15:1351612.
doi: 10.3389/fpls.2024.1351612

COPYRIGHT

© 2024 Zait, Joseph and Assmann. This is an open-access article distributed under the terms of the [Creative Commons Attribution License \(CC BY\)](#). The use, distribution or reproduction in other forums is permitted, provided the original author(s) and the copyright owner(s) are credited and that the original publication in this journal is cited, in accordance with accepted academic practice. No use, distribution or reproduction is permitted which does not comply with these terms.

Stomatal responses to VPD utilize guard cell intracellular signaling components

Yotam Zait^{1,2*}, Ariel Joseph² and Sarah M. Assmann^{1*}

¹Biology Department, Penn State University, Mueller Laboratory, University Park, PA, United States,

²The Robert H. Smith Institute of Plant Sciences and Genetics in Agriculture, Faculty of Agriculture, Food, and Environment, The Hebrew University of Jerusalem, Rehovot, Israel

Stomatal pores, vital for CO₂ uptake and water loss regulation in plants, are formed by two specialized guard cells. Despite their importance, there is limited understanding of how guard cells sense and respond to changes in vapor pressure difference (VPD). This study leverages a selection of CO₂ hyposensitive and abscisic acid (ABA) signaling mutants in *Arabidopsis*, including heterotrimeric G protein mutants and RLK (receptor-like kinase) mutants, along with a variety of canola cultivars to delve into the intracellular signaling mechanisms prompting stomatal closure in response to high VPD. Stomatal conductance response to step changes in VPD was measured using the LI-6800F gas exchange system. Our findings highlight that stomatal responses to VPD utilize intracellular signaling components. VPD hyposensitivity was particularly evident in mutants of the *ht1* (*HIGH LEAF TEMPERATURE1*) gene, which encodes a protein kinase expressed mainly in guard cells, and in *gpa1-3*, a null mutant of the sole canonical heterotrimeric G α subunit, previously implicated in stomatal signaling. Consequently, this research identifies a nexus in the intricate relationships between guard cell signal perception, stomatal conductance, environmental humidity, and CO₂ levels.

KEYWORDS

Arabidopsis thaliana, *Brassica napus*, *Oryza sativa*, heterotrimeric G proteins, guard cell, stomatal conductance, vapor pressure difference (VPD)

Introduction

Stomata, microscopic pores found in the leaf epidermis, play a pivotal role in controlling leaf CO₂ uptake and transpirational water loss. Stomata are formed by pairs of specialized epidermal cells known as guard cells (Darwin and Pertz, 1911; Raschke, 1975). Guard cells actively regulate intracellular solute concentrations, which drive transmembrane water flux and thus determine cell volume and turgor pressure (Jones and Mansfield, 1970; Assmann and Jegla, 2016). When the volume and turgor of guard cells increase, they bow apart, enlarging the pore aperture and thus promoting water loss from the leaf to the atmosphere. The driving force for this evaporation is the leaf-to-air vapor

pressure difference (VPD), defined as the difference in water vapor partial pressure between the leaf's substomatal cavity and the surrounding air. While numerous studies have sought to understand stomatal functioning, the mechanism explaining how stomata sense VPD and what triggers consequent changes in guard cell volume and stomatal apertures remains elusive, especially since VPD, relative humidity (RH), and transpiration are all interlinked. In particular, the mechanism underlying stomatal closure following short-term exposure to high VPD, believed to stem from metabolically-controlled solute release from guard cells (Grantz and Zeiger, 1986; Buckley, 2005), lacks substantial experimental evidence. Early observations that high VPD accelerates the rate of transient stomatal conductance changes in response to pulses of blue light in both the dicot, soybean, and the graminaceous monocot, sugarcane (Assmann and Grantz, 1990a; Assmann and Grantz, 1990b), are consistent with the hypothesis that VPD modulates intracellular signaling cascades, such as those well-documented (Shimazaki et al., 2007; Assmann and Jegla, 2016; Matthews et al., 2019) for the phototropin-mediated (Kinoshita et al., 2001; Hosotani et al., 2021) rapid blue light response.

Previous work has suggested possible involvement of localized "water loss sensors" in the guard cells, responding more to transpiration than to RH itself (Mott and Parkhurst, 1991). However, as VPD increases, transpiration can actually decline because of decreased stomatal conductance, obviating a monotonic relationship between stomatal conductance and transpiration that would be expected if transpiration were the parameter being sensed (Assmann and Grantz, 1990a; Assmann and Grantz, 1990b). Due to its important role in stomatal regulation, ABA has been considered as a possible key player in the process of stomatal closure after VPD perturbation (McAdam and Brodribb, 2016). Some work suggests that stomatal closure is driven by the rapid up-regulation of foliar ABA levels following a VPD-induced loss of leaf turgor (Bauer et al., 2013; McAdam and Brodribb, 2015). For example, in the dicot herb, *Senecio minimus*, small increases in VPD had no effect on stomatal conductance, while step increases in VPD calculated to be large enough to reduce leaf turgor both increased leaf ABA content and triggered decreases in stomatal conductance (Binstock et al., 2023). However, the observations that stomata in isolated epidermis show a VPD response (Lösch, 1977), and that ABA-deficient mutants exhibit a reduction in a stomatal aperture in response to VPD, just like wild type (Assmann et al., 2000; Merilo et al., 2018), raises a debate regarding the essentiality of ABA in the VPD response. In this study, we explore the possibility of shared intracellular signaling components between stomatal responses to VPD, elevated CO₂, ABA, and pathogens, in particular leveraging key CO₂ hyposensitive mutants and mutants in signaling elements downstream of ABA in our experimental design (Table 1). In our study, while Arabidopsis serves as our reference plant, we also examined the VPD response of different cultivars of canola (*Brassica napus*), which belongs to the same plant family as Arabidopsis, and rice, representing monocot grasses. This broader investigation enables us to gain insights into stomatal responses across diverse plant species, enhancing our understanding of how

different crops may adapt to VPD fluctuations in changing environmental conditions.

Materials and methods

Plant materials and growth conditions

Arabidopsis

The plant materials used in the study included *Arabidopsis thaliana* accession Col-0 and various T-DNA mutants in the Col-0 background (Table 1): *ca1ca4* (Hu et al., 2010), *ht1-1*, *ht1-2* (Hashimoto et al., 2006), *rhc1* (SALK_123674) (Tian et al., 2015), *aha1-6* (SALK_016325) (Haruta et al., 2010), *ost1-3* (SALK_008068) (Yoshida et al., 2002), *slac1-3* (SALK_099139) (Vahisalu et al., 2008), *gpa1-3* (Gα mutant) (Jones et al., 2003), *xlgl1-1xlg2-1xlg3-4gpa1-3* (Gα quadruple mutant), (Yu et al., 2018) which contains a knockdown allele of the *XLG1* gene (Ding et al., 2008) and knockout alleles of the other 3 genes, *agb1-2* (Gβ mutant) (Ullah et al., 2003), *bak1-4* (SALK_116202) (Heese et al., 2007), *fls2* (SAIL_691_C04) (Melotto et al., 2006), *gcr1-2* (Chen et al., 2006), *pskr1-3pskr2-2* (Hartmann et al., 2013). Sterilized seeds of these genotypes were placed on agarose medium containing 1% sucrose and half-strength Murashige and Skoog medium (MS), with a pH of 5.6. The seeds were kept on plates in the dark at 4°C for 96 hours for germination, and then the plates were placed vertically for 14 days under light (200 μmol photons m⁻² s⁻¹). Afterward, the seedlings were transplanted into 0.5L pots filled with Metro Mix 360 soil mounded into a cone shape to maximize leaf area and facilitate gas exchange measurements. The pots were allowed to exceed their normal soil capacity, thus enabling the rosette to grow downwards, which facilitated manipulations for gas exchange measurements. The plants were grown in a growth chamber with an 8-hour light/16-hour dark regime, under a light intensity of 200 μmol photons m⁻² s⁻¹. The temperature was set to 21/19°C (light/dark), and the relative humidity was maintained at approximately 60%. The plants were watered twice a week with deionized water to ensure the pots remained at full soil water capacity.

Rice

Both Taichung 65 (T65; WT) and *d1*, a protein null mutant of *RGAI*, which encodes the rice heterotrimeric Gα subunit (Oki et al., 2009), were grown in a greenhouse in 10L pots filled with a soil mixture (Green 20, Even Ari, Israel). The greenhouse maintained an average temperature of 30°C during the day and 22°C during the night.

Canola

Seeds of the following cultivars: AR91004, AR91907, Aspen, Bridger, Cascade, Cathy, CEI3, Erica, Flint, Hummus, IMC129, LB2135, Polo canola, Printol, Reston, Selkirk, Span, Tobin, Webster, and Wichita obtained from the USDA canola germplasm collection were sown in 6-inch pots filled with Metro-mix 360 potting mixture. The plants were grown in a growth chamber with an 8-hour light/16-hour dark regime, under a light intensity of 300 μmol

TABLE 1 Summary of the Arabidopsis mutants used in this study and the initial reference reporting a role for the gene in Arabidopsis guard cells.

Genotype	Gene	Category	Guard Cell Phenotype	Reference for Guard Cell Phenotype
Col-0	Wild type	Wild type	Wild type	
<i>ht1-1</i>	<i>HIGH LEAF TEMPERATURE1</i>	CO ₂ signaling kinase	Impaired in sensing or responding to CO ₂	Hashimoto et al., 2006
<i>ht1-2</i>	<i>HIGH LEAF TEMPERATURE1</i>	CO ₂ signaling kinase	Impaired in sensing or responding to CO ₂	Hashimoto et al., 2006
<i>slac1</i>	<i>SLOW ANION CHANNEL-ASSOCIATED1</i>	ABA/CO ₂ signaling anion channel	Impaired in sensing or responding to ABA/CO ₂	Vahisalu et al., 2008
<i>ost1</i>	<i>OPEN STOMATA1</i>	ABA signaling kinase	Impaired in sensing or responding to ABA	Yoshida et al., 2002
<i>ca1ca4</i>	<i>B CARBONIC ANHYDRASE1/4</i>	CO ₂ signaling carbonic anhydrases	Impaired in sensing or responding to CO ₂	Hu et al., 2010
<i>rhc1</i>	<i>RESISTANT TO HIGH CO₂1</i>	CO ₂ signaling MATE transporter	Impaired in sensing or responding to CO ₂	Tian et al., 2015
<i>aha1-6</i>	<i>ARABIDOPSIS H⁺ ATPase1</i>	Plasma membrane H ⁺ -ATPase	Impaired in responding to blue and red light	Ando and Kinoshita, 2018
<i>gpa1-3</i>	<i>G PROTEIN ALPHA SUBUNIT1</i>	Heterotrimeric G protein subunit	Impaired in sensing or responding to ABA	Wang et al., 2001
<i>agb1-2</i>	<i>ARABIDOPSIS GTP BINDING PROTEIN BETA 1</i>	Heterotrimeric G protein β subunit	Impaired in sensing or responding to ABA	Fan et al., 2008
<i>Gα quad</i>	<i>G PROTEIN ALPHA SUBUNIT1/EXTRA-LARGE G-PROTEIN 1/2/3</i>	Heterotrimeric G protein α subunits	NA*	NA
<i>bak1-4</i>	<i>BRI1-ASSOCIATED RECEPTOR KINASE1</i>	Receptor-Like Kinases	Impaired in sensing or responding to ABA	Shang et al., 2016
<i>fls2</i>	<i>FLAGELLIN-SENSITIVE2</i>	Receptor-Like Kinases	Impaired in sensing or responding to flg22 elicitor	Zhang et al., 2008
<i>pskr1-pskr2</i>	<i>PHYTOSULFOKIN RECEPTOR1/2</i>	Receptor-Like Kinases	NA*	NA
<i>gcr1-2</i>	<i>G-COUPLED RECEPTOR1</i>	putative G protein coupled receptor	Altered in sensing or responding to ABA	Pandey and Assmann, 2004

*Not available.

The initial reference describing each mutant line is provided in Materials and Methods.

photons m⁻² s⁻¹. The temperature was set to 21/19°C (light/dark), and the relative humidity was maintained at approximately 60 percent.

Gas exchange measurements

Gas exchange measurements were conducted using the LI-6800F portable photosynthesis and fluorescence system (LI-COR Biosciences, Lincoln, NE, USA). The measuring chamber enclosed a circular 2-cm² leaf area, such that the combined effect of gas fluxes from both sides of the leaf was assessed. The air-flow rate was kept constant at 300 μmol s⁻¹, and the reference CO₂ concentration was maintained at 400 μmol CO₂ mol⁻¹ air (ppm) with the leaf fan set to 5000 rpm. Prior to each measurement set, light intensity was adjusted to 400 μmol m⁻² s⁻¹ for Arabidopsis, 800 μmol m⁻² s⁻¹ for canola, and 1000 μmol m⁻² s⁻¹ for rice, using the LI-6800, with 10% blue light. Gas exchange measurements were conducted during

the day (09:00 a.m. -15:00 p.m.) to avoid circadian influences on stomatal conductance. We selected young fully expanded leaves in Arabidopsis and canola, while the flag leaf was chosen in rice. To investigate the effects of vapor pressure difference (VPD) on stomatal conductance, VPD levels were adjusted for Arabidopsis using the LI-6800F humidifier, while maintaining a constant air temperature of 22°C. The relative humidity (RH) in the leaf chamber was first set to 70% (VPD of 0.65 kPa), and stomatal conductance was allowed to reach steady state, which required 20-30 minutes. Then, the humidity was rapidly reduced to 15% (VPD of 2.2 kPa). Measurements were recorded every minute for 40-60 minutes. To ensure rapid imposition of the RH change, the LI-6800 desiccators were oven-dried at 70°C overnight before each day of measurements. The level of stomatal closure was determined as the difference between the stomatal conductance at time zero and the stomatal conductance after reaching a new steady state. The “wrong way response” (WWR) was defined as a rapid increase in g_{sw} after the VPD change. The amplitude of the WWR was measured as

the difference between the peak stomatal conductance after the humidity drop and the stomatal conductance at time zero. The criteria for assessing the duration of the WWR were calculated differently depending on the genotype's behavior: For genotypes that experienced a reduction in stomatal conductance beyond that of the original baseline value, the duration was calculated as the time required for stomatal conductance to return to the same baseline value as observed before the humidity change, i.e., at time zero (Buckley et al., 2011). For genotypes where the new stable level of g_{sw} after the step change was greater than that of the original baseline, the duration of the WWR was calculated from time zero to the point when they achieved this new steady-state value. This measurement thus captures the time required for stomatal conductance to reach and stabilize at a new steady-state. The cumulative water loss during the WWR was calculated as the summation of transpiration data throughout the duration of the WWR. Since we found that measurements in the first 3 minutes are not reliable (Figure 1), cumulative transpiration was calculated starting after 3 minutes from the humidity change. The VPD-induced change in g_{sw} was calculated as the difference between the steady-state g_{sw} values before and after the VPD step. For each set of experiments, we used different Col-0 plants to ensure the validity of our comparisons with the various mutants. In all, 15 different Arabidopsis genotypes and a total of 68 Arabidopsis plants were assayed in these experiments.

LI-6800 measurements on artificial leaves

To validate that the stomatal conductance response to VPD measured by the LI-6800 instrument is not influenced by instrument artifacts, we conducted experiments using artificial leaves. These artificial leaves were carefully designed with known specifications, including a constant stomatal pore diameter and pore density, ensuring that they exhibit a constant stomatal conductance. The leaves were printed from Vero using a Stratasys

J826™ Prime 3D printer. We positioned plastic leaves with a non-conductive, water-resistant surface, consisting of no pores on the adaxial side, and a conductive surface, consisting of pores of different diameters (150, 500, or 750 μm) and at different densities (1, 10, or 100 pores mm^{-2}) on the abaxial side. We inserted filter paper (Whatman No. 3) saturated with distilled water within each leaf, ensuring a continuous water supply. The VPD levels within the leaf chamber were meticulously controlled using the LI-6800F humidifier, while maintaining air temperature of 25°C throughout the experiment. The CAD files for construction of artificial leaves are freely available at <https://github.com/AssmannLab/Stomatal-responses-to-VPD-utilize-guard-cell-intracellular-signaling-components>.

Response to VPD in canola varieties

Six-week-old canola plants of the specified cultivars were enclosed within plastic transparent domes for 3 hours to create a controlled environment with a temperature of 22°C and a relative humidity of 80%, resulting in low VPD (0.52 kPa). During this time, eight measurements were obtained for each plant using a LI-600 leaf porometer/fluorometer (LI-COR Biosciences, Lincoln, NE, USA). To alter the VPD conditions, dry air was introduced by a heating fan, elevating the temperature to 28°C and reducing the relative humidity to 35% for 2 hours (VPD 2.45 kPa) prior to repeating measurements with the porometer. This manipulation of conditions created a high VPD environment for assessment of the response of stomatal conductance to VPD.

Statistical analysis

To assess the differences in gas exchange parameters between the Col-0 (WT) and the studied mutant, we conducted two-sample t-tests using the base R statistical software [version 4.3.22 (<https://cran.r-project.org>)]. P values of comparisons are provided in Supplementary Table 1.

Results

Assessing the reliability of the LI-6800 instrument in measuring stomatal conductance response to VPD: artificial leaf experiments

Measuring humidity responses with a gas exchange system can be prone to artifacts due to a discernible delay between setting the desired relative humidity (RH) of the chamber and its actual attainment. This delay arises because the chamber has a finite volume, necessitating time for it to stabilize at the new environmental conditions. This delay can lead to instability in measurements, particularly affecting the precision of infrared gas analyzer (IRGA) readings, especially when abrupt changes occur in the input parameters to the chamber. Such single step changes in

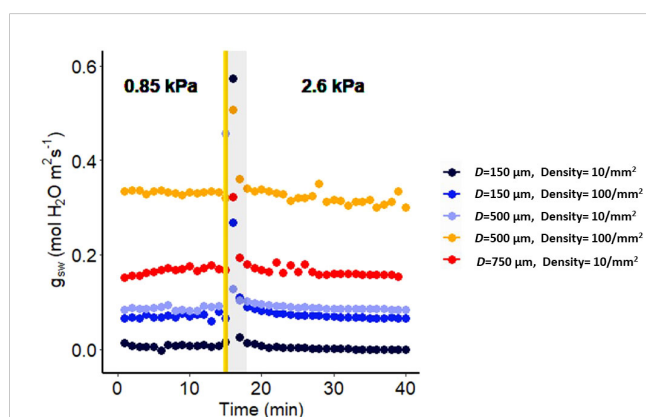


FIGURE 1
Effect of a sharp increase in vapor pressure difference (VPD) on conductance to water vapor of artificial plastic leaves with different pore diameters and densities. The vertical line in the graph indicates the time at which the VPD was changed from 0.85 to 2.6 kPa. The shaded region indicates data points that are not reliable.

RH have the potential to significantly disrupt the accurate calculation of stomatal conductance. To assess the reliability of data collected using the LI-6800, we utilized artificial leaves as a means of evaluating the system's readouts. Our study demonstrated that, for all constant conductance scenarios (pore size and density), the initial 3-minute period following a VPD change was particularly vulnerable to artifacts (Figure 1). In all artificial leaves the values of the leaf conductance returned after 3 minutes to the same level as recorded prior to the humidity change. This underscores the importance of caution in interpreting results and highlights the potential for erroneous responses when utilizing the LI-6800 system. Accordingly, in the gas exchange figures in this manuscript, we do not show or incorporate in calculations any datapoints acquired at $t < 3$ min after the step change in VPD.

Exploring stomatal response to VPD in Arabidopsis and rice: mutant analyses and insights into sensitivity and signaling pathways

We assessed the response to a step increase in VPD of Arabidopsis wild-type (Col-0) vs. mutants known to be impaired in sensing or responding to CO₂ (*ht1-1*, *ht1-2*, *slac1-3*, *ca1ca4*, *rhc1*) (Hashimoto et al., 2006; Vahisalu et al., 2008; Hu et al., 2010; Tian et al., 2015; Zhang et al., 2018), ABA (*ost1-3*, *slac1-3*) (Ache et al., 2010; Acharya et al., 2013) and light (*aha1-6*) (Yamauchi et al., 2016; Ando and Kinoshita, 2018). The gas exchange data (Figure 2) illustrate the rapid transient opening movement called the stomatal “wrong way response” (WWR), in which a decrease in epidermal

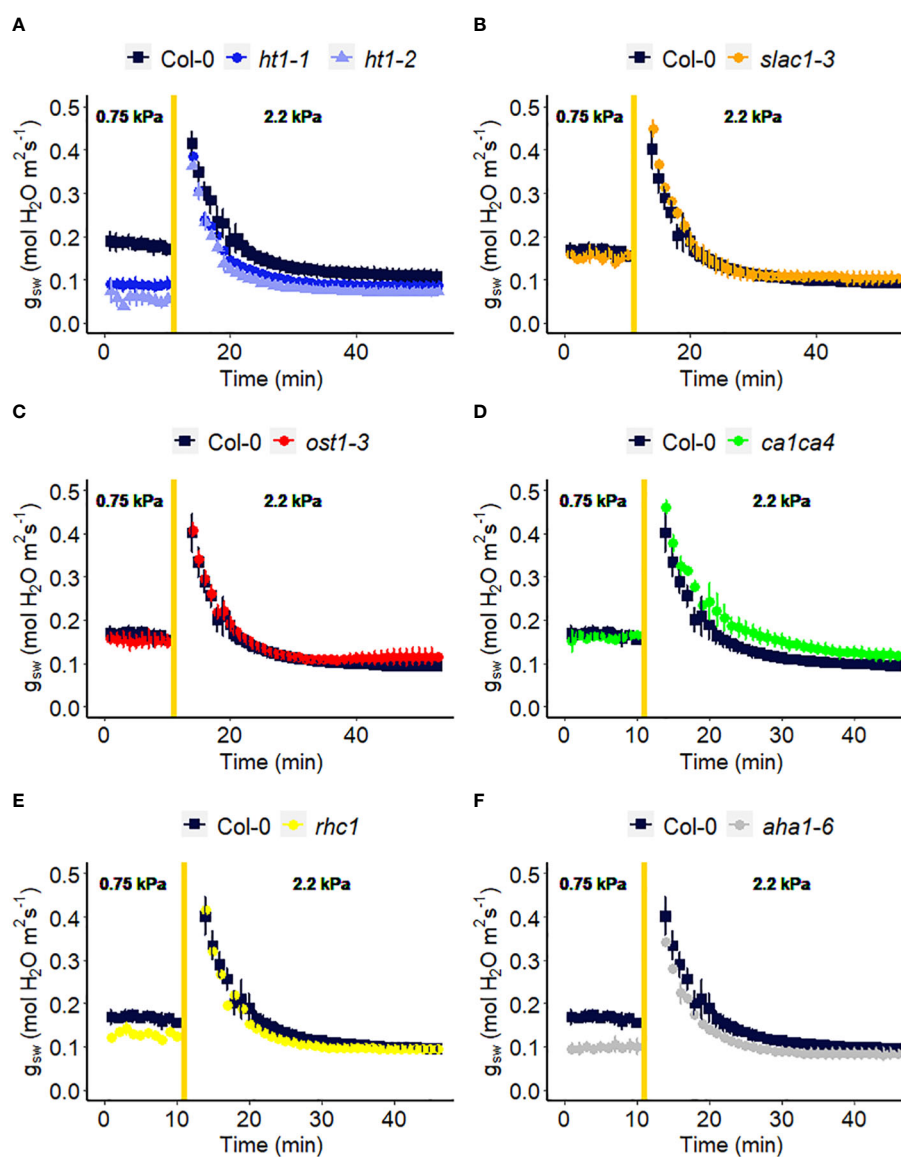


FIGURE 2

Effect of a sharp increase in vapor pressure difference (VPD) on stomatal conductance in Arabidopsis WT (Col-0) and the mutants: (A) *ht1-1*, *ht1-2*, (B) *slac1-3*, (C) *ost1-3*, (D) *ca1ca4*, (E) *rhc1*, and (F) *aha1-6*. The vertical line in the graph indicates the time at which the VPD was changed from 0.75 to 2.2 kPa. Error bars represent standard error of the mean ($n=3$). For ease of comparison, the same Col-0 data are plotted in each of the 6 panels.

cell turgor pressure will result in the guard cells transiently sinking into epidermal cells and increasing pore aperture followed by an oppositely directed closing movement resulting in a new steady state conductance. There were no significant differences in the WWR amplitude between genotypes (Figure 3A) but the duration of the WWR was on average 5 and 8 minutes longer in the *ht1-1* ($P < 0.05$) and the *ht1-2* ($P < 0.001$) mutants compared to Col-0 respectively (Figures 3A, B). The *rhc1* mutant also exhibited a broadened wrong way response (13 min) compared to Col-0 (9 min) ($P < 0.05$; Figure 3B). No significant differences were

observed among these genotypes in the cumulative water loss via transpiration during the WWR (Figure 3C). However, the steady-state response of stomatal conductance (g_{sw}) to an increase in VPD from 0.75 kPa to 2.2 kPa in Col-0 vs. the mutants showed clear genotypic differences. Col-0 showed clear sensitivity to an increase of VPD from 0.75 kPa to 2.2 kPa VPD, seen as a stomatal conductance decrease below the initial baseline (Figure 3D). VPD sensitivity similar to that of the Col-0 wild-type was observed for the mutants *slac1-3*, *ost1-3*, and *ca1ca4*. However, there was essentially no VPD-induced change in steady-state conductance for the

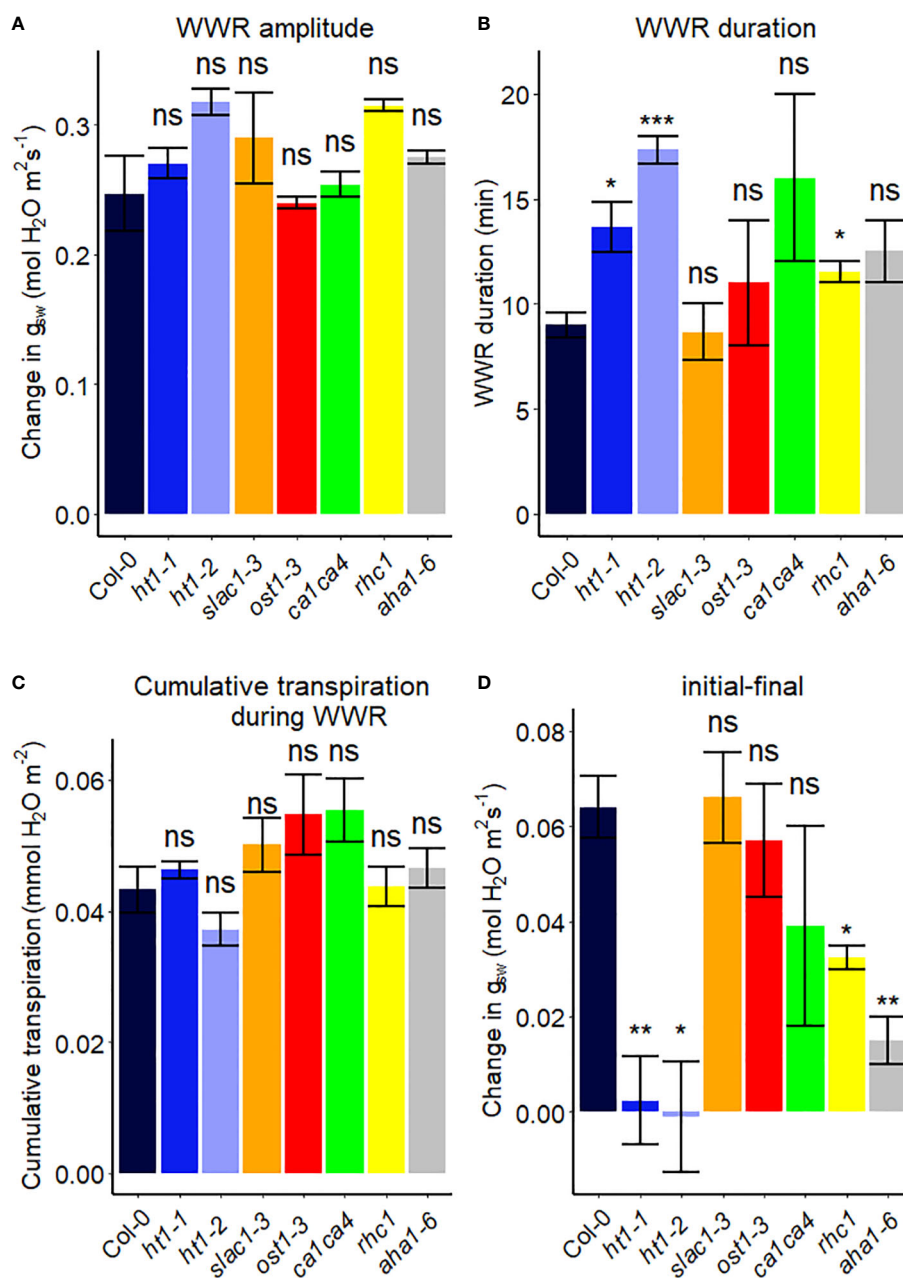


FIGURE 3

Stomatal VPD response characteristics in Arabidopsis WT (Col-0) and mutant plants (*ht1-1*, *ht1-2*, *slac1-3*, *ost1-3*, *ca1ca4*, *rhc1*, and *aha1-6*). (A) The “wrong way response” (WWR) amplitude represents the differences in stomatal conductance at the time of the peak vs. before the VPD change. (B) The WWR duration represents the duration between the steady-state conductance before the VPD change and returning to the same baseline. (C) Cumulative water loss in transpiration during WWR. (D) Difference in steady-state g_{sw} values before and after the change in VPD. Asterisks indicate p-values and define significance levels as follows: * for $p < 0.05$; ** for $p < 0.01$; *** for $p < 0.0001$; ns, not significant.

Arabidopsis mutants *ht1-1* ($P < 0.01$), and *ht1-2* ($P < 0.05$), while *rhc1* ($P < 0.05$) and *aha1-6* ($P < 0.01$) also exhibited hyposensitivity to VPD (Figures 2, 3).

Role of heterotrimeric G proteins in Arabidopsis and rice in the stomatal response to VPD

In another experiment, we compared Arabidopsis Col-0 with the *gpa1-3* mutant (heterotrimeric G protein α subunit mutant), *agb1-2* (heterotrimeric G protein β subunit mutant) and $G\alpha$ quadruple mutant (Ding et al., 2008) (Figure 4). While the amplitude of the WWR did not differ among genotypes (Figure 5A), the duration of the WWR was longer in the *gpa1-3*, *agb1-2* and $G\alpha$ quadruple mutants (Figure 5B), leading to increased cumulative water loss during the WWR in *agb1-2*, the $G\alpha$ quadruple, and in *gpa1-3* (Figure 5C). A comparison of steady-state conductance before and after the step change in VPD showed VPD hyposensitivity of the *gpa1-3* and $G\alpha$ quadruple mutants (Figures 4A, C, 5D). The *agb1-2* mutant, on the other hand, ultimately showed a decrease in stomatal conductance under high VPD (Figure 5D), but with slower kinetics compared to Col-0 (Figures 4B, 5B, D). These comparisons reveal an important role of heterotrimeric G proteins in the stomatal response to VPD. By contrast, when we tested the VPD response in the rice counterpart of the Arabidopsis *gpa1-3* mutant, *d1*, which is a protein null mutant of the $G\alpha$ heterotrimeric G protein, *RGA1*, we did not observe similar trends as in the Arabidopsis *gpa1-3* mutant (Figure 6). Notably, the *d1* mutants exhibited elevated basal stomatal conductance ($0.21 \text{ mol m}^{-2} \text{ s}^{-1}$ compared to $1.6 \text{ mol m}^{-2} \text{ s}^{-1}$). Furthermore, following the step change in VPD from 1 kPa to 3 kPa, the wild-type and *d1* plants displayed statistically similar new steady-state conductance levels after 30 min ($\sim 0.125 \text{ mol m}^{-2} \text{ s}^{-1}$). The *d1* plants also showed an oscillatory pattern of stomatal conductance, as seen by the increase in stomatal conductance between 30 min and 40 min.

The role of receptor-like kinases in VPD sensitivity

Receptor-like kinases (RLKs) have been implicated as receptors upstream of plant heterotrimeric G proteins (Ishida et al., 2014; Aranda-Sicilia et al., 2015; Chakravorty et al., 2018; Yu et al., 2018). In our final set of Arabidopsis experiments (Figure 7), we investigated the involvement of several Arabidopsis RLKs in the VPD response. The gas exchange experiment unveiled that the *pskr1-3pskr2-2* and *bak1-4* mutants both exhibited significant lower WWR amplitude (Figure 8A), and shorter WWR time period (Figure 8B), which resulted in significantly lower WWR-mediated water loss in *pskr1-3pskr2-2* (Figure 8C). However, no significant differences in the change in steady-state conductance following a VPD step increase were observed among Col-0 and any of the RLK mutants (Figures 7, 8).

Stomatal response to VPD in different canola varieties

We examined various canola cultivars using porometry under high and low VPD conditions (Figure 9A). Notably, we identified a group of canola cultivars, including, IMC 129, Flint, Cathy, Bridger, and LB2315 which exhibited hyposensitivity to high VPD under these conditions (lines which showed reduction in g_{sw} of less than 75%) (Figure 9B). Conversely, we observed another set of canola lines, including Printol, Waster, Wichita, and AR91004, which showed strong sensitivity to VPD as stomatal conductance after 2 h of high VPD was nearly zero (Figure 9A).

Discussion

The stomatal response to Vapor Pressure Difference (VPD) remains a complex and intriguing phenomenon. Guard cells have been proposed to sense various factors, including turgor loss,

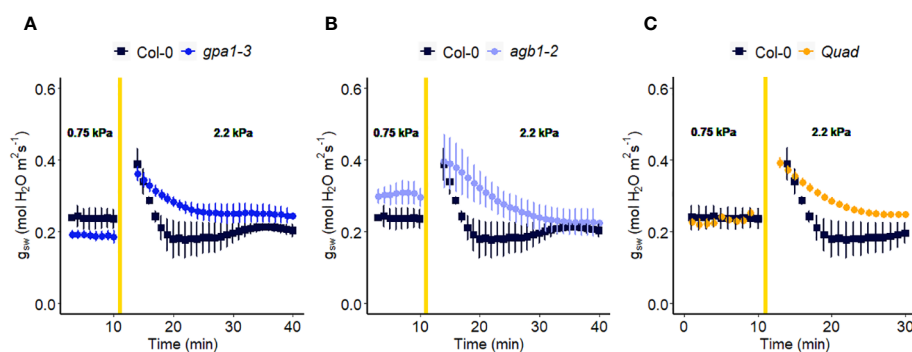


FIGURE 4
Effect of a sharp increase in vapor pressure difference (VPD) on stomatal conductance in Arabidopsis WT (Col-0) and the mutants: (A) *gpa1-3*, (B) *agb1-2*, and (C) $G\alpha$ quadruple mutant *xlg1-1xlg2-1xlg3-4gpa1-3*. The vertical line in the graph indicates the time at which the VPD was changed from 0.75 to 2.2 kPa. Error bars represent standard error of the mean ($n=3-5$). For ease of comparison, the same Col-0 data are plotted in each of the 3 panels.

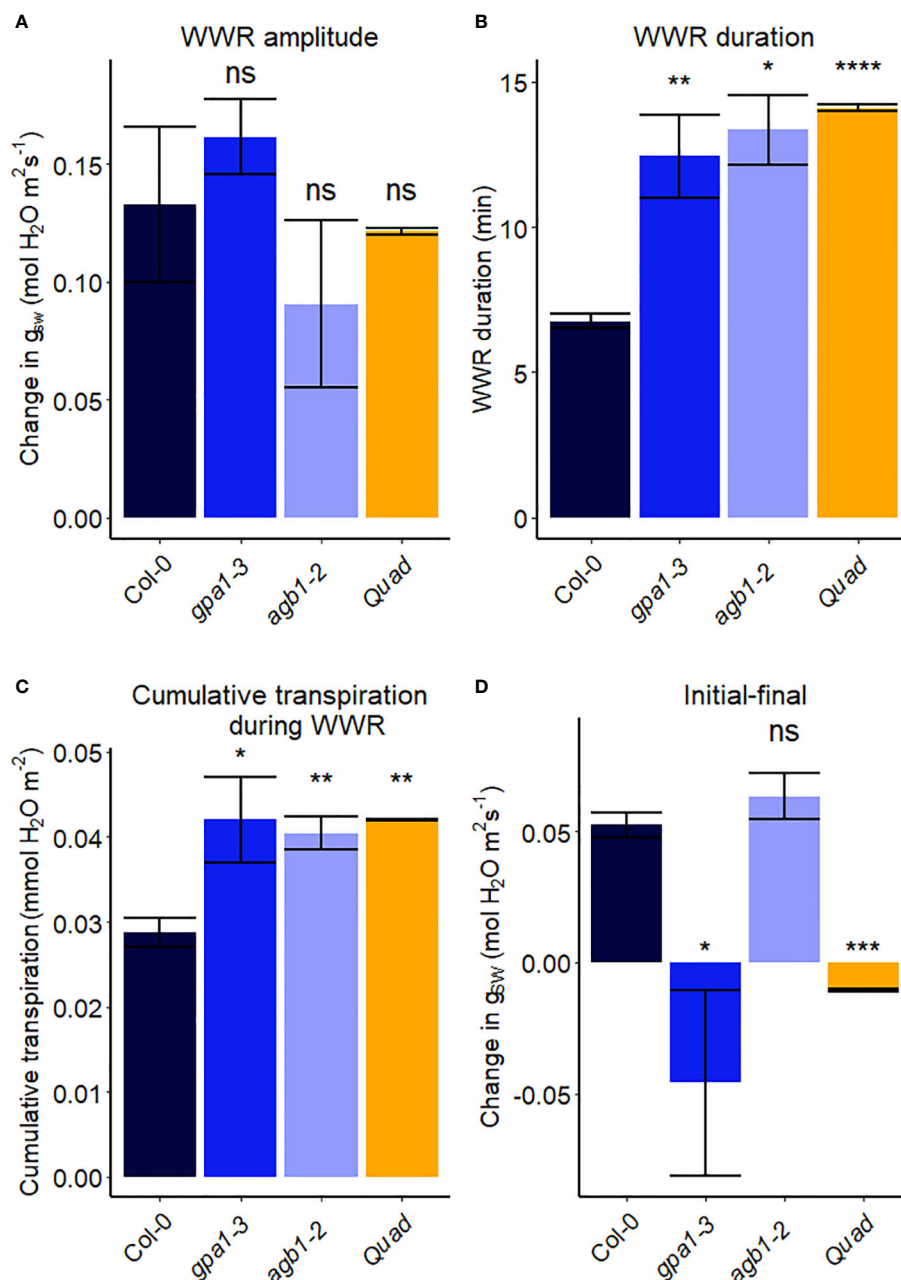


FIGURE 5

Stomatal VPD response characteristics in Arabidopsis WT (Col-0) and the mutants: *gpa1-3*, *agb1-2*, and α quadruple mutant *xlg1-1xlg2-1xlg3-4gpa1-3*. (A) The “wrong way response” (WWR) amplitude represents the differences in stomatal conductance at the time of the peak vs. before the VPD change. (B) The WWR duration represents the duration between the steady-state conductance before the VPD change and returning to the same baseline. (C) Cumulative water loss in transpiration during WWR. (D) Difference in steady-state g_{sw} values before and after the change in VPD. Asterisks indicate p-values and define significance levels as follows: * for $p < 0.05$; ** for $p < 0.01$; *** for $p < 0.0001$; ns, not significant.

increased transpiration rates, or changes in humidity (Mott and Parkhurst, 1991).

Recent studies have suggested that the VPD response might actually be a dual one (McAdam and Brodribb, 2014; Merilo et al., 2018; Yaaran et al., 2019). One component appears to be mediated by the hormone ABA, triggered when leaf turgor decreases (McAdam and Brodribb, 2016). The other seems to represent the direct guard cell response to VPD, transpiration, and/or humidity, as observed in responses to VPD in isolated epidermal peels (Löscher,

1977; Shope et al., 2008). Several studies report that a guard cell response to VPD is observed in ABA-deficient and ABA-insensitive plants (Assmann et al., 2000), as well as in plants genetically engineered to have ABA-insensitivity restricted to the guard cells (Yaaran et al., 2019). Experiments that assay wilting presumably demonstrate a net effect of both responses, further influenced by hydraulic conductivity.

Here we show that part of the observed “wrong-way” response can be attributed to artifacts of the gas exchange measurement

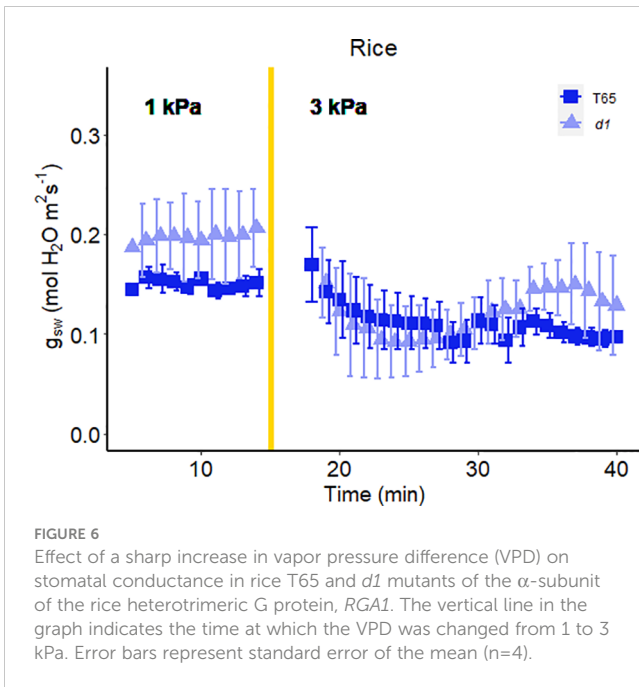


FIGURE 6
Effect of a sharp increase in vapor pressure difference (VPD) on stomatal conductance in rice T65 and *d1* mutants of the α -subunit of the rice heterotrimeric G protein, *RGA1*. The vertical line in the graph indicates the time at which the VPD was changed from 1 to 3 kPa. Error bars represent standard error of the mean (n=4).

system (Figure 1). However, the remaining conductance changes comprise a genuine biological or biophysical response. We would like to propose a new, 3-component model to the guard cell VPD response (Figure 10). The first component consists of an abrupt increase in g_{sw} that is solely hydropassive, and that arises from

water loss by neighboring epidermal cells that removes epidermal backpressure on guard cells, such that they gape open. In our experiments, this is reflected in the *amplitude* of the WWR. The second component involves restoration of turgor to the pavement cells of the epidermis, which opposes the initial g_{sw} increase; this component is strongly influenced by hydraulic conductance (Buckley et al., 2011), which in turn is influenced by ABA (Shatil-Cohen et al., 2011; Pantin et al., 2013a). The third component is the direct guard cell response to VPD, in which osmolyte loss from the guard cells promotes stomatal closure (Grantz and Zeiger, 1986; Buckley, 2005). This response is ABA independent or, stated more conservatively, does not require ABA sensing. The third component is quantified in our experiments as the initial g_{sw} minus the final g_{sw} i.e. the steady-state VPD response.

Support for the idea of the amplitude of the WWR as a separable component of the VPD response is provided by our data, in that we observe that some genotypes have a wild-type WWR amplitude but an impaired steady-state response to VPD (e.g. *ht1-1* and *ht1-2*), while other genotypes have a reduced WWR amplitude, but a wild-type steady-state response (e.g. *bak1-4* and *pskr1/pskr2*). In addition, according to this hypothesis, the second and the third components together dictate the *duration* of the WWR, and the associated extent of transpirational water loss. Differential relative contributions of these two components in different genotypes may influence the extent of observed ABA-dependence of the WWR, which may account for some of the debate in the literature regarding the ABA-dependence of guard cell

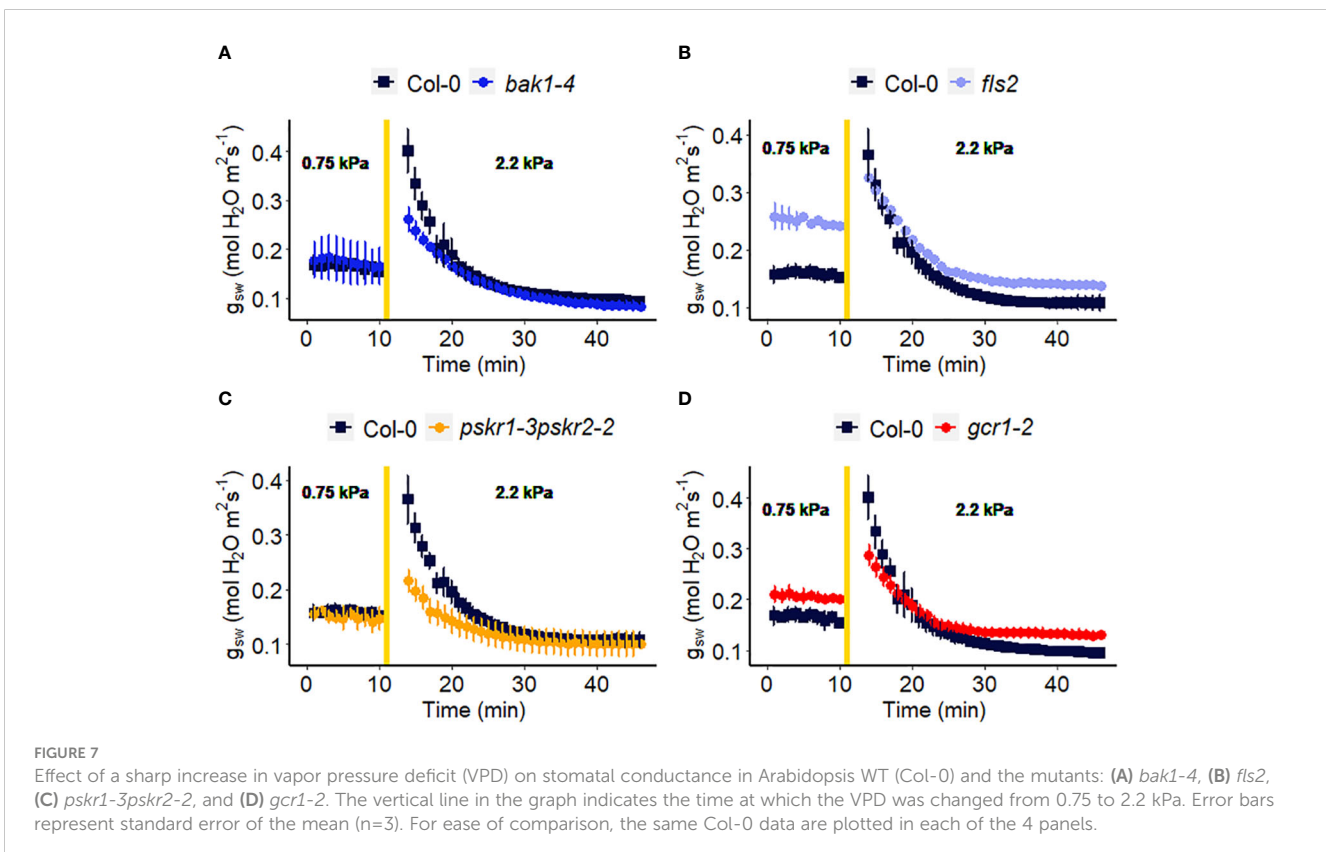


FIGURE 7
Effect of a sharp increase in vapor pressure deficit (VPD) on stomatal conductance in Arabidopsis WT (Col-0) and the mutants: (A) *bak1-4*, (B) *fls2*, (C) *pskr1-3pskr2-2*, and (D) *gcr1-2*. The vertical line in the graph indicates the time at which the VPD was changed from 0.75 to 2.2 kPa. Error bars represent standard error of the mean (n=3). For ease of comparison, the same Col-0 data are plotted in each of the 4 panels.

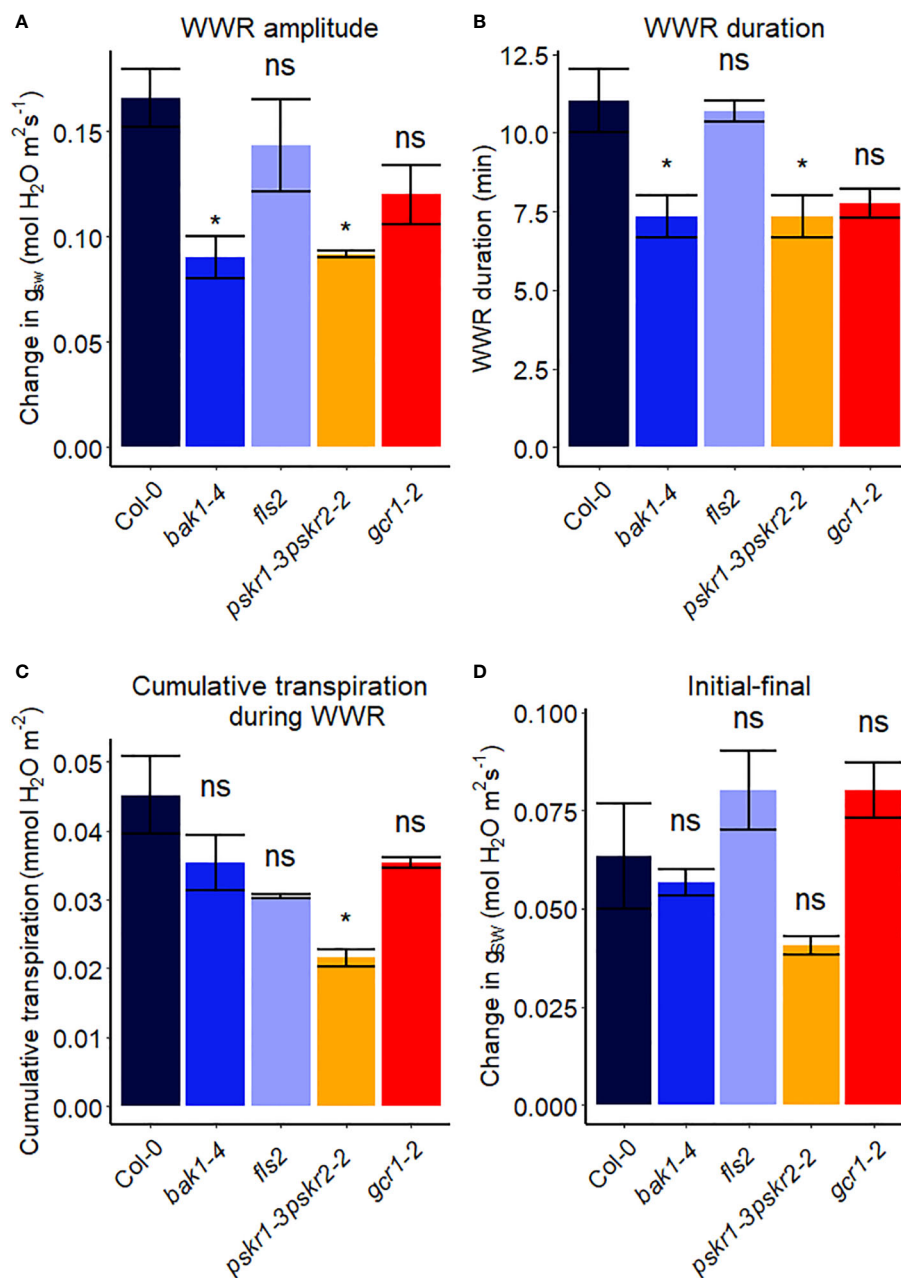


FIGURE 8

Stomatal VPD response characteristics in Arabidopsis WT (Col-0) and the mutants: mutants: *bak1-4*, *fls2*, *pskr1-3pskr2-2*, and *gcr1-2*. (A) The “wrong way response” (WWR) amplitude represents the differences in stomatal conductance at the time of the peak vs. before the VPD change. (B) The WWR duration represents the duration between the steady-state conductance before the VPD change and returning to the same baseline. (C) Cumulative water loss in transpiration during WWR. (D) Difference in steady-state g_{sw} values before and after the change in VPD. Asterisks indicate p-values and define significance levels as follows: * for $p < 0.05$; ns, not significant.

VPD sensing. Finally, we note that the genotypic differences that we observe in the steady-state VPD response (e.g. in *gpa1* and the $G\alpha$ quadruple vs. Col-0) are consistent with the proposition that turgor loss from guard cells is not simply hydropassive but involves mechanisms of VPD sensing and intracellular signaling, as also supported by the work of Hsu et al. (2021). Below, we further discuss how different Arabidopsis genes implicated in guard cell signaling influence these three components.

HT1 kinase controls stomatal conductance in response to VPD

Our research endeavors to unravel the intricate mechanisms that govern stomatal responses to changes in VPD. We are particularly interested in exploring whether there exists a shared intracellular signaling pathway that modulates stomatal responses to both VPD and elevated CO₂ level. Utilizing key CO₂

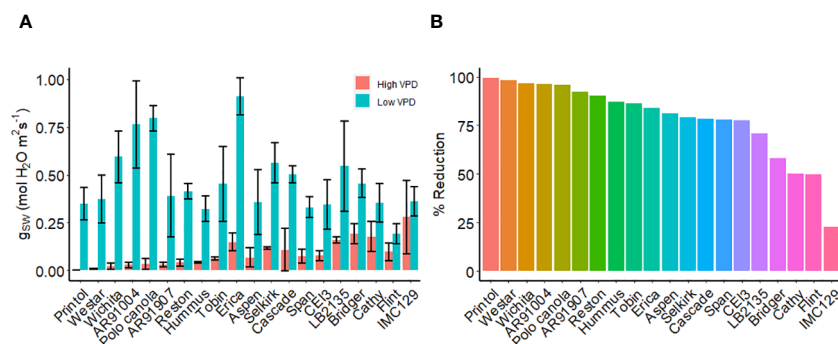


FIGURE 9

VPD response of canola cultivars. (A) Steady-state stomatal conductance, measured using the L-600 porometer, of multiple canola lines: AR91004, AR91907, Aspen, Bridger, Cascade, Cathy, CEI3, Erica, Flint, Hummus, IMC129, LB2135, Polo Canola, Printol, Reston, Selkirk, Span, Tobin, Webster, and Wichita. Conductance measurements were taken both before and two hours following exposure to high VPD condition. (B) The percent change in stomatal conductance after the exposure 2h exposure to high VPD. Error bars represent standard error of the mean ($n = 4$).

hyposensitive (Wang et al., 2001; Tian et al., 2015; Kollist et al., 2018; Zhang et al., 2018) and abscisic acid (ABA) downstream component (Assmann et al., 2000; Merlot et al., 2001; Xie et al., 2006; Zhang et al., 2018) mutants of Arabidopsis, we aimed to shed light on the processes that catalyze active stomatal closure in response to high VPD conditions.

The *ht1-1* and *ht1-2* mutants, which harbor mutations in the *HIGH LEAF TEMPERATURE1* gene encoding a protein kinase expressed mainly in guard cells, showed reduced changes in g_{sw} in response to a step change in VPD as compared to Col-0 (Figures 2, 3). This suggests that this intracellular signaling component is a shared element in stomatal response to VPD and elevated CO_2 . One hypothesis for the evolution of shared elements of the VPD and elevated CO_2 response is that both factors play important roles in optimizing plant water use efficiency and carbon assimilation. Under conditions of high VPD, when the air is drier, stomata tend to close to reduce water loss and minimize desiccation stress (Mott and Parkhurst, 1991; Zait et al., 2017). This response is beneficial for conserving water resources. On the other hand, elevated CO_2 concentrations promote more efficient photosynthesis and carbon assimilation in plants. To maximize the benefits of elevated CO_2 , stomata may partially close to limit the influx of CO_2 and prevent excessive water loss through transpiration. Therefore, coordination between stomatal responses to VPD and elevated CO_2 could have evolved, where changes in VPD may influence the response to CO_2 and vice versa. Further research is needed to investigate the specific molecular mechanisms underlying this phenomenon and to assess other components in CO_2 signaling for their potential role in the VPD response, such as MPK12 (Jakobson et al., 2016; Töldsepp et al., 2018; Takahashi et al., 2022) and CBC1 (Hayashi et al., 2020; Ando et al., 2022). Surprisingly, given the central role of the SLAC1 ion channel in mediating anion loss in response to ABA and CO_2 , we did not observe an impaired VPD response in the *slac1* mutant. Lack of a difference in steady-state VPD responses of the *slac1* mutant was similarly evident in the data of Schroeder and colleagues (Hsu et al., 2021), although they did see slowed kinetics of the VPD-induced decrease in g_{sw} in *slac1*, which could arise from different growth conditions or initial leaf turgor status of their plants vs ours (Pantin

et al., 2013b). Although HT1 is known to inhibit SLAC1 (Tian et al., 2015; Hōrak et al., 2016), it is possible that HT1 regulates the VPD response by modulating stomatal closure through a SLAC1-independent pathway. For example, other anion channels, such as QUAC1/ALMT2 might mediate solute loss during VPD-induced stomatal closure. Consistent with this idea, a *slac1 almt2* double mutant did show impaired steady-state stomatal closure following a step increase in VPD (Hsu et al., 2021). In addition, we observed that the H^+ ATPase mutant, *aha1-6* has a reduced level of stomatal conductance under low VPD (Figure 2F), consistent with impaired light-induced stomatal opening (Yamauchi et al., 2016; Ando and Kinoshita, 2018), but shows little change in steady-state g_{sw} when VPD is increased (Figure 2F), thus also implicating H^+ ATPases in the VPD response. We also showed that mutation of *RESISTANT TO HIGH CO_2 (RHC1)*, which encodes a MATE-type transporter that links elevated CO_2 levels to HT1 repression, has reduced sensitivity in stomatal response to high VPD (Figures 2, 3). However, controversy surrounds the *rhc1* mutant response to elevated CO_2 , with conflicting findings in studies by Tian et al. (2015) and Töldsepp et al. (2018), underscoring the need for additional investigations in this area.

A previous thermal imaging genetic screen identified an *ost1* EMS mutant as VPD hyposensitive based on its lower leaf temperature (Xie et al., 2006). Given that basal stomatal conductance was greater in this *ost1* mutant (Xie et al., 2006), it is not unexpected that it would be identified in such a screen. Xie et al. (2006) also reported slower decreases in stomatal conductance following an increase in VPD in these mutants relative to wild-type; final steady-state values in g_{sw} were not reported. Merilo et al. (2018) also observed a slowed VPD-induced g_{sw} decrease in an *ost1* mutant (*ost1-3*), and highlighted the possibility of both ABA-dependent and ABA-independent OST1 signaling in regulating VPD-induced stomatal closure. In contrast to these studies, our study found that the *ost1-3* mutant maintained sensitivity to high VPD similarly to wild-type plants in all components of the VPD-triggered g_{sw} timecourse. This result would be consistent with previous studies showing that ABA-deficient Arabidopsis, pea, and tomato (Merilo et al., 2018) as well as ABA-insensitive Arabidopsis plants (Assmann et al., 2000) or stomata (Yaaran

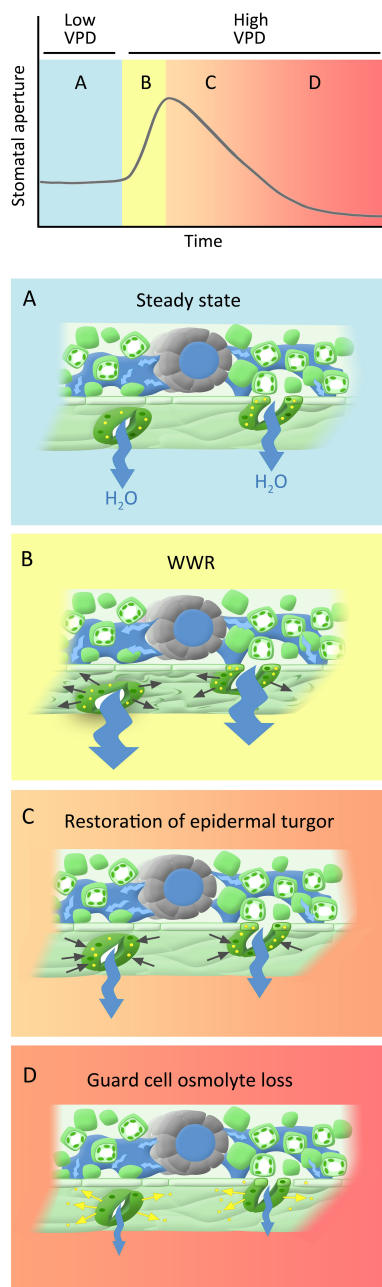


FIGURE 10

Phases of hypothesized dynamic stomatal response to VPD: (A) Steady state under low VPD conditions, characterized by high stomatal apertures, transpiration, and leaf turgor. (B) A rapid increase in VPD leads to increased transpiration, which creates a water deficit in the leaf tissues, leading to a decrease in turgor pressure within the epidermal cells, including those surrounding the stomata. This loss of turgor pressure passively causes stomatal opening (wrong way response; WWR). (C) Turgor restoration in pavement cells counters the initial aperture increase, a process significantly influenced by leaf hydraulic conductance (indicated by blue arrows). (D) The direct guard cell response to VPD, wherein the loss of osmolytes (yellow dots) from the guard cells triggers stomatal closure, serving as a protective mechanism that mitigates excessive water loss. As indicated by the color shading, phases C and D likely overlap temporally.

et al., 2019) show a similar rates of high VPD-induced conductance decrease as wild-type plants. The contrasting findings on *OST1* can be attributed to several experimental differences. Firstly, our research employed a 2 cm² vs the whole-plant chamber for gas exchange used by Merilo and colleagues. Moreover, the range of humidity changes imposed in our study was steeper, from 70% to 15% while in Merilo et al. (2018), air humidity decreased from approximately 70% to around 35%. This disparity underlines the potential complexity and context-dependency of plant responses to environmental factors and calls for further exploration of the mechanisms involved in stomatal regulation in response to VPD. Such context-dependency is seen, for example, in studies on poplar, where species with increased stomatal density and decreased guard cell size exhibit faster responses to VPD when grown in the greenhouse ((Durand et al., 2019); see also Caine et al., 2019)), but these correlations largely disappear when the same species are grown in the field (Durand et al., 2020). Growth conditions, specifically sun vs. shade growth environments also have been shown to affect how VPD influences stomatal conductance dynamics in response to sunflecks in the rainforest species, *Piper auritum* (Tinoco-Ojanguren and Pearcy, 1993). Illumination conditions during growth can also affect leaf size and thickness, which affect boundary layer thickness and thus the vapor pressure gradient experienced by leaves under natural conditions.

The role of GPA1 in the plant's response to VPD

We demonstrated that GPA1 plays a pivotal role in the VPD response (Figures 4, 5). Notably, previous work placed emphasis on GPA1 involvement in both abscisic acid signaling (Wang et al., 2001) and carbon dioxide (CO₂) response (Nilson and Assmann, 2010). The integration of ABA and CO₂ signaling pathways, in which GPA1 plays a central part, may contribute to the guard cells' ability to sense and respond to VPD changes. When activated, the G protein α subunit ($G\alpha$) binds GTP, causing the separation of the α subunit from the $\beta\gamma$ subunit pair ($G\beta\gamma$). Both $G\alpha$ and $G\beta\gamma$ can interact with various downstream components of signaling pathways (Chakravorty and Assmann, 2019). Notably, K⁺ and Ca²⁺ channels are significant downstream effectors that are regulated by G proteins through both cytosolic signaling cascades and membrane-delimited pathways in plants (Wu and Assmann, 1994; Wang et al., 2001; Zhang et al., 2008; Zhang et al., 2011; Jeon et al., 2019). In the future, it will be important to test other transporters, ion channels, and aquaporins known to be involved in active stomatal closure, in the context of stomatal response to high VPD.

While $G\alpha$ clearly influences the VPD response in Arabidopsis, its function in rice seems to differ. In rice, the *d1* mutant display reductions in stomatal conductance under high VPD conditions similar to WT, marked by oscillatory patterns in stomatal conductance (Figure 6). These observations may suggest a

distinction in VPD sensing mechanisms between grasses and dicots, which could possibly be related to their differential guard cell morphology or cell wall composition. Guard cells in grasses such as rice display a characteristic dumbbell shaped morphology and are flanked by morphologically distinct subsidiary cells, which could influence the turgor balance between guard cells and the cells bordering them differently than in dicots. In addition, the cell wall has been shown to influence stomatal behavior (Rui et al., 2017; Chen et al., 2021) and both Arabidopsis GPA1 (Klopfleisch et al., 2011; McFarlane et al., 2021) and its rice ortholog RGA1 (Zait et al., 2021) have been implicated in modulating the cell wall, where VPD sensing may take place. Knockout of this canonical G α subunit might have differential impacts on cell wall components in the two species, particularly given the well-known differences in cell wall composition between dicots and grasses (Vogel, 2008). Alternatively, different growth conditions for the two species may have contributed to the apparent disparity in the impact of G α knockout, including greenhouse growth for rice and growth-chamber growth for Arabidopsis. In *Vicia faba*, for example, stomata of growth-chamber grown plants were more sensitive to CO₂ than stomata of greenhouse-grown plants (Talbot et al., 1996), and difference in relative humidity in the two environments was identified as a key regulatory factor (Talbot et al., 2003).

In recent years, there has been growing evidence implicating receptor-like kinases (RLKs) in coupling with G protein signaling in plants (Chakravorty and Assmann, 2019). Genetic analysis has suggested potential interactions between RLKs and G protein subunits, and several studies have demonstrated physical interactions between specific RLKs and G α or G $\beta\gamma$ subunits using techniques like targeted immunoprecipitation or bimolecular fluorescence complementation (Bommert et al., 2013; Ishida et al., 2014; Yu et al., 2018). In addition, phosphorylation of GPA1 by several RLKs has been demonstrated (Aranda-Sicilia et al., 2015). RLKs perceive extracellular peptide ligands. We speculate that under high VPD, the concentration of an apoplastic RLK ligand might effectively increase due to evaporation from the apoplast (Chawla et al., 2021). This increase in ligand concentration could serve as the signal for initiating stomatal closure in response to high VPD, coupling a physical phenomenon (VPD) with a chemical signal. Gas exchange measurements demonstrated that only *bak1-4* and *pskr1-3pskr2-2* mutants showed altered WWR patterns in response to high VPD, suggesting potential divergence in the underlying mechanisms of stomatal regulation among the RLK mutants. It is intriguing that across the 14 different Arabidopsis mutants assayed here for their VPD response, these two *rlk* mutants were the only genotypes to show a significant alteration in the amplitude of the WWR. In both cases, the WWR amplitude was decreased, which suggests the hypothesis that these mutations result in a decrease in the cuticular conductance, which in turn reduces the rate of passive loss of water through the cuticle in these mutants upon the step increase in VPD. The fact that none of the receptor mutants assayed in Figures 7, 8 phenocopied the VPD response of the *gpa1* mutant suggests that other receptors may function upstream of

the G protein heterotrimer in the VPD response. While our research presents intriguing possibilities for understanding the coordination of responses to VPD and other stomatal signals through GPA1 interactions with RLKs, further research is needed to validate and elucidate specific molecular mechanisms.

VPD response of canola cultivars

Canola is one of the crop species most closely related to the reference plant Arabidopsis, and it is reasonable to hypothesize that common VPD signaling mechanisms prevail in the two species. We observed variation in VPD sensitivity among different *Brassica napus* cultivars we assayed. Our results suggest that certain lines, such as Selkirk, span, and polo canola, exhibit hyposensitivity to high VPD. On the other hand, lines like Cascade, Tobin, and Hummus show heightened sensitivity to VPD. The large guard cells and easily removed epidermis of *Brassica napus* make it an ideal model crop for studying stomatal responses (Zhu et al., 2016a; Zhu et al., 2016b), including those to high VPD. Our observation of differential cultivar response to VPD emphasizes a genetic component to VPD sensitivity and suggests that GWAS approaches may be fruitful in identifying genes that encode components of VPD sensing and response. Unraveling the mechanisms through which stomata respond to VPD in *Brassica napus* could hold great potential for enhancing crop water-use efficiency and productivity, especially in the face of changing climates. Furthermore, as *Brassica napus* likely shares relevant genes with Arabidopsis, our findings may help to identify candidate genes or mutants that can be utilized for breeding or engineering more water-efficient crops for future agriculture.

Data availability statement

The raw data supporting the conclusions of this article will be made available by the authors, without undue reservation.

Author contributions

SA: Conceptualization, Formal analysis, Funding acquisition, Project administration, Supervision, Writing – original draft, Writing – review & editing. AJ: Investigation, Writing – review & editing. YZ: Conceptualization, Formal analysis, Funding acquisition, Investigation, Methodology, Supervision, Writing – original draft, Writing – review & editing.

Funding

The author(s) declare financial support was received for the research, authorship, and/or publication of this article. This study was supported by grants NSF-MCB-17-15826 and NSF-IOS-19-20420 to SA, USDA/NIFA post-doctoral fellowship 2021-67034-35174 to YZ, and Israel Science Foundation (ISF) grant 2076/23 to YZ.

Conflict of interest

The authors declare that the research was conducted in the absence of any commercial or financial relationships that could be construed as a potential conflict of interest.

Publisher's note

All claims expressed in this article are solely those of the authors and do not necessarily represent those of their affiliated

organizations, or those of the publisher, the editors and the reviewers. Any product that may be evaluated in this article, or claim that may be made by its manufacturer, is not guaranteed or endorsed by the publisher.

Supplementary material

The Supplementary Material for this article can be found online at: <https://www.frontiersin.org/articles/10.3389/fpls.2024.1351612/full#supplementary-material>

References

- Acharya, B. R., Jeon, B. W., Zhang, W., and Assmann, S. M. (2013). Open Stomata 1 (OST1) is limiting in abscisic acid responses of Arabidopsis guard cells. *New Phytol.* 200, 1049–1063. doi: 10.1111/nph.12469
- Ache, P., Bauer, H., Kollist, H., Al-Rasheid, K. A., Lautner, S., Hartung, W., et al. (2010). Stomatal action directly feeds back on leaf turgor: New insights into the regulation of the plant water status from non-invasive pressure probe measurements. *Plant J.* 62, 1072–1082. doi: 10.1111/j.1365-313X.2010.04213.x
- Ando, E., and Kinoshita, T. (2018). Red light-induced phosphorylation of plasma membrane H⁺-ATPase in stomatal guard cells. *Plant Physiol.* 178, 838–849. doi: 10.1104/pp.18.00544
- Ando, E., Kollist, H., Fukatsu, K., Kinoshita, T., and Terashima, I. (2022). Elevated CO₂ induces rapid dephosphorylation of plasma membrane H⁺-ATPase in guard cells. *New Phytol.* 236, 2061–2074. doi: 10.1111/nph.18472
- Aranda-Sicilia, M. N., Trusov, Y., Maruta, N., Chakravorty, D., Zhang, Y., and Botella, J. R. (2015). Heterotrimeric G proteins interact with defense-related receptor-like kinases in Arabidopsis. *J. Plant Physiol.* 188, 44–48. doi: 10.1016/j.jplph.2015.09.005
- Assmann, S. M., and Grantz, D. A. (1990a). Stomatal response to humidity in sugarcane and soybean: effect of vapour pressure difference on the kinetics of the blue light response. *Plant Cell Environ.* 13, 163–169. doi: 10.1111/j.1365-3040.1990.tb01288.x
- Assmann, S. M., and Grantz, D. A. (1990b). The magnitude of the stomatal response to blue light: Modulation by atmospheric humidity. *Plant Physiol.* 93, 701–707. doi: 10.1104/pp.93.2.701
- Assmann, S. M., and Jegla, T. (2016). Guard cell sensory systems: recent insights on stomatal responses to light, abscisic acid, and CO₂. *Curr. Opin. Plant Biol.* 33, 157–167. doi: 10.1016/j.pbi.2016.07.003
- Assmann, S. M., Snyder, J. A., and Lee, Y.-R. J. (2000). ABA-deficient (aba1) and ABA-insensitive (abi1-1, abi2-1) mutants of Arabidopsis have a wild-type stomatal response to humidity. *Plant Cell Environ.* 23, 387–395. doi: 10.1046/j.1365-3040.2000.00551.x
- Bauer, H., Ache, P., Lautner, S., Fromm, J., Hartung, W., Al-Rasheid, K. A. S., et al. (2013). The stomatal response to reduced relative humidity requires guard cell-autonomous ABA synthesis. *Curr. Biol.* 23, 53–57. doi: 10.1016/j.cub.2012.11.022
- Binstock, B. R., Manandhar, A., and McAdam, S. A. M. (2023). Characterizing the breakpoint of stomatal response to vapor pressure deficit in an angiosperm. *Plant Physiol.* 1–9. doi: 10.1093/plphys/kiad560
- Bommert, P., Je, B. L., Goldshmidt, A., and Jackson, D. (2013). The maize Gα gene COMPACT PLANT2 functions in CLAVATA signalling to control shoot meristem size. *Nature* 502, 555–558. doi: 10.1038/nature12583
- Buckley, T. N. (2005). The control of stomata by water balance. *New Phytol.* 168, 275–292. doi: 10.1111/j.1469-8137.2005.01543.x
- Buckley, T. N., Sack, L., and Gilbert, M. E. (2011). The role of bundle sheath extensions and life form in stomatal responses to leaf water status. *Plant Physiol.* 156, 962–973. doi: 10.1104/pp.111.175638
- Caine, R. S., Yin, X., Sloan, J., Harrison, E. L., Mohammed, U., Fulton, T., et al. (2019). Rice with reduced stomatal density conserves water and has improved drought tolerance under future climate conditions. *New Phytol.* 221, 371–384. doi: 10.1111/nph.15344
- Chakravorty, D., and Assmann, S. M. (2019). G protein subunit phosphorylation as a regulatory mechanism in heterotrimeric G protein signaling in mammals, yeast, and plants. *Biochem. J.* 475, 3331–3357. doi: 10.1042/BCJ20160819.G
- Chakravorty, D., Yu, Y., and Assmann, S. M. (2018). A kinase-dead version of FERONIA receptor-like kinase has dose-dependent impacts on rosette morphology and RALF1-mediated stomatal movements. *FEBS Lett.* 592, 3429–3437. doi: 10.1002/1873-3468.13249
- Chawla, U., Perera, S. M. D. C., Fried, S. D. E., Eitel, A. R., Mertz, B., Weerasinghe, N., et al. (2021). Activation of the G-protein-coupled receptor rhodopsin by water. *Angew. Chemie* 133, 2318–2325. doi: 10.1002/ange.202003342
- Chen, J. G., Gao, Y., and Jones, A. M. (2006). Differential roles of arabidopsis heterotrimeric G-protein subunits in modulating cell division in roots. *Plant Physiol.* 141, 887–897. doi: 10.1104/pp.106.079202
- Chen, Y., Li, W., Turner, J. A., and Anderson, C. T. (2021). PECTATE LYASE LIKE12 patterns the guard cell wall to coordinate turgor pressure and wall mechanics for proper stomatal function in Arabidopsis. *Plant Cell* 33, 3134–3150. doi: 10.1093/plcell/koab161
- Darwin, F., and Pertz, D. F. M. (1911). On a new method of estimating the aperture of stomata. *Proc. R. Soc London. Ser. B* 84, 136–154. doi: 10.1098/rspb.1911.0058
- Ding, L., Pandey, S., and Assmann, S. M. (2008). Arabidopsis extra-large G proteins (XLGs) regulate root morphogenesis. *Plant J.* 53, 248–263. doi: 10.1111/j.1365-313X.2007.03335.x
- Durand, M., Brendel, O., Buré, C., and Le Thiec, D. (2019). Altered stomatal dynamics induced by changes in irradiance and vapour-pressure deficit under drought: impacts on the whole-plant transpiration efficiency of poplar genotypes. *New Phytol.* 222, 1789–1802. doi: 10.1111/nph.15710
- Durand, M., Brendel, O., Buré, C., and Le Thiec, D. (2020). Changes in irradiance and vapour pressure deficit under drought induce distinct stomatal dynamics between glasshouse and field-grown poplars. *New Phytol.* 227, 392–406. doi: 10.1111/nph.16525
- Fan, L., Zhang, W., Chen, J., Taylor, J. P., Jones, A. M., and Assmann, S. M. (2008). Abscisic acid regulation of guard-cell K⁺ and anion channels in Gβ- and RGS-deficient Arabidopsis lines. *Proc. Natl. Acad. Sci.* 105, 1–6. doi: 10.1073/pnas.0800980105
- Grantz, D. A., and Zeiger, E. (1986). Stomatal responses to light and leaf-air water vapor pressure difference show similar kinetics in sugarcane and soybean. *Plant Physiol.* 81, 865–868. doi: 10.1104/pp.81.3.865
- Hartmann, J., Stu, N., Dahlke, R. I., Sauter, M., Pflanzen, P. D., and Garten, A. B. (2010). Molecular characterization of mutant Arabidopsis plants with reduced plasma membrane proton pump activity. *J. Biol. Chem.* 285, 17918–17929. doi: 10.1074/jbc.M110.101733
- Hashimoto, M., Negi, J., Young, J., Israelsson, M., Schroeder, J. I., and Iba, K. (2006). Arabidopsis HT1 kinase controls stomatal movements in response to CO₂. *Nat. Cell Biol.* 8, 391–397. doi: 10.1038/ncb1387
- Hayashi, M., Sugimoto, H., Takahashi, H., Seki, M., Shinozaki, K., Sawasaki, T., et al. (2020). Raf-like kinases CBC1 and CBC2 negatively regulate stomatal opening by negatively regulating plasma membrane H⁺-ATPase phosphorylation in Arabidopsis. *Photochem. Photobiol. Sci.* 19, 88–98. doi: 10.1039/c9pp00329k
- Heese, A., Hann, D. R., Gimenez-Ibanez, S., Jones, A. M. E., He, K., Li, J., et al. (2007). The receptor-like kinase SERK3/BAK1 is a central regulator of innate immunity in plants. *Proc. Natl. Acad. Sci. U.S.A.* 104, 12217–12222. doi: 10.1073/pnas.0705306104
- Hörak, H., Sierla, M., Töldsepp, K., Wang, C., Wang, Y. S., Nuhkat, M., et al. (2016). A dominant mutation in the ht1 kinase uncovers roles of MAP kinases and GHRI in CO₂-induced stomatal closure. *Plant Cell* 28, 2493–2509. doi: 10.1105/tpc.16.00131
- Hosotani, S., Yamauchi, S., Kobayashi, H., Fuji, S., Koya, S., Shimazaki, K. I., et al. (2021). A BLUS1 kinase signal and a decrease in intercellular CO₂ concentration are necessary for stomatal opening in response to blue light. *Plant Cell* 33, 1813–1827. doi: 10.1093/plcell/koab067

- Hsu, P. K., Takahashi, Y., Merilo, E., Costa, A., Zhang, L., Kernig, K., et al. (2021). Raf-like kinases and receptor-like (pseudo)kinase GHR1 are required for stomatal vapor pressure difference response. *Proc. Natl. Acad. Sci. U.S.A.* 118, 1–12. doi: 10.1073/pnas.2107280118
- Hu, H., Boisson-Dernier, A., Israelsson-Nordström, M., Böhmer, M., Xue, S., Ries, A., et al. (2010). Carbonic anhydrases are upstream regulators of CO₂-controlled stomatal movements in guard cells. *Nat. Cell Biol.* 12, 87–93. doi: 10.1038/ncb2009
- Ishida, T., Tabata, R., Yamada, M., Aida, M., Mitsumasa, K., Fujiwara, M., et al. (2014). Heterotrimeric G proteins control stem cell proliferation through CLAVATA signaling in Arabidopsis. *EMBO Rep.* 15, 1202–1209. doi: 10.15252/embr.201438660
- Jakobson, L., Vaaher, L., Töldsepp, K., Nuhkat, M., Wang, C., Wang, Y. S., et al. (2016). Natural variation in Arabidopsis *cvi-0* accession reveals an important role of MPK12 in guard cell CO₂ signaling. *PLoS Biol.* 14, 1–25. doi: 10.1371/journal.pbio.2000322
- Jeon, B. W., Acharya, B. R., and Assmann, S. M. (2019). The Arabidopsis heterotrimeric G-protein β subunit, AGB1, is required for guard cell calcium sensing and calcium-induced calcium release. *Plant J.* 99, 231–244. doi: 10.1111/tjp.14318
- Jones, A. M., Ecker, J. R., and Chen, J. G. (2003). A reevaluation of the role of the heterotrimeric G protein in coupling light responses in Arabidopsis. *Plant Physiol.* 131, 1623–1627. doi: 10.1104/pp.102.017624
- Jones, R. J., and Mansfield, T. A. (1970). Suppression of stomatal opening in leaves treated with abscisic acid. *J. Exp. Bot.* 21, 714–719. doi: 10.1093/jxb/21.3.714
- Kinoshita, T., Doi, M., Suetsugu, N., Takatoshi Kagawa, M. W., and Shimazaki, K. (2001). phot1 and phot2 mediate blue light regulation of stomatal opening. *Nature* 414, 656–660. doi: 10.1038/414656a
- Klopfleisch, K., Phan, N., Augustin, K., Bayne, R. S., Booker, K. S., Botella, J. R., et al. (2011). Arabidopsis G-protein interactome reveals connections to cell wall carbohydrates and morphogenesis. *Mol. Syst. Biol.* 7, 1–7. doi: 10.1038/msb.2011.66
- Kollist, H., Takahashi, Y., Azoulay-Shemer, T., Dubeaux, G., Schulze, S., Rappel, W.-J., et al. (2018). Insights into the molecular mechanisms of CO₂-mediated regulation of stomatal movements. *Curr. Biol.* 28, R1356–R1363. doi: 10.1016/j.cub.2018.10.015
- Lösch, R. (1977). Responses of stomata to environmental factors—experiments with isolated epidermal strips of polypodium vulgar. *Oecologia* 97, 85–97. doi: 10.1007/BF00345365
- Matthews, J. S. A., Vialat-Chabrand, S., and Lawson, T. (2019). Role of blue and red light in stomatal dynamic behaviour. *J. Exp. Bot.* 71, 2253–2269. doi: 10.1093/jxb/erz563
- McAdam, S. A. M., and Brodribb, T. J. (2014). Separating active and passive influences on stomatal control of transpiration. *Plant Physiol.* 164, 1578–1586. doi: 10.1104/pp.113.231944
- McAdam, S. A. M., and Brodribb, T. J. (2015). The evolution of mechanisms driving the stomatal response to vapor pressure deficit. *Plant Physiol.* 167, 833–843. doi: 10.1104/pp.114.252940
- McAdam, S. A. M., and Brodribb, T. J. (2016). Linking turgor with ABA biosynthesis: implications for stomatal responses to vapor pressure deficit across land plants. *Plant Physiol.* 171, 2008–2016. doi: 10.1104/pp.16.00380
- McFarlane, H. E., Mutwil-Anderwald, D., Verbančić, J., Picard, K. L., Gookin, T. E., Froehlich, A., et al. (2021). A G protein-coupled receptor-like module regulates cellulose synthase secretion from the endomembrane system in Arabidopsis. *Dev. Cell* 56, 1484–1497.e7. doi: 10.1016/j.devcel.2021.03.031
- Melotto, M., Underwood, W., Koczan, J., Nomura, K., and He, S. Y. (2006). Plant stomata function in innate immunity against bacterial invasion. *Cell* 126, 969–980. doi: 10.1016/j.cell.2006.06.054
- Merilo, E., Yarmolinsky, D., Jalakas, P., Parik, H., Tulva, I., Rasulov, B., et al. (2018). Stomatal VPD response: there is more to the story than ABA. *Plant Physiol.* 176, 851–864. doi: 10.1104/pp.17.00912
- Merlot, S., Guerrier, D., Vavasseur, A., Gosti, F., and Giraudat, J. (2001). The ABI1 and ABI2 protein phosphatases 2C act in a negative feedback regulatory loop of the abscisic acid signalling pathway. *Plant J.* 25, 295–303. doi: 10.1046/j.1365-313x.2001.00965.x
- Mott, K. A., and Parkhurst, D. F. (1991). Stomatal responses to humidity in air and helox. *Plant Cell Environ.* 14, 509–515. doi: 10.1111/j.1365-3040.1991.tb01521.x
- Nilson, S. E., and Assmann, S. M. (2010). The α subunit of the Arabidopsis heterotrimeric G protein, GPA1, is a regulator of transpiration efficiency. *Plant Physiol.* 152, 2067–2077. doi: 10.1104/pp.109.148262
- Oki, K., Inaba, N., Kitano, H., Takahashi, S., Fujisawa, Y., Kato, H., et al. (2009). Study of novel *d1* alleles, defective mutants of the α subunit of heterotrimeric G-protein in rice. *Genes Genet. Syst.* 84, 35–42. doi: 10.1266/ggs.84.35
- Pandey, S., and Assmann, S. M. (2004). The Arabidopsis putative G protein-coupled receptor GCR1 interacts with the G protein α subunit GPA1 and regulates abscisic acid signaling. *Plant Cell* 16, 1897–1909. doi: 10.1105/tpc.020321.a
- Pantin, F., Monnet, F., Jannaud, D., Costa, J. M., Renaud, J., Muller, B., et al. (2013a). The dual effect of abscisic acid on stomata. *New Phytol.* 197, 65–72. doi: 10.1111/nph.12013
- Pantin, F., Renaud, J., Barbier, F., Vavasseur, A., Le Thiec, D., Rose, C., et al. (2013b). Developmental priming of stomatal sensitivity to abscisic acid by leaf microclimate. *Curr. Biol.* 23, 1805–1811. doi: 10.1016/j.cub.2013.07.050
- Raschke, K. (1975). Stomatal action. *Annu. Rev. Plant Physiol.* 26, 309–340. doi: 10.1146/annurev.pp.26.060175.001521
- Rui, Y., Xiao, C., Yi, H., Kandemir, B., Wang, J. Z., Puri, V. M., et al. (2017). POLYGALACTURONASE INVOLVED IN EXPANSION3 functions in seedling development, rosette growth, and stomatal dynamics in Arabidopsis thaliana. *Plant Cell* 29, 2413–2432. doi: 10.1105/tpc.17.00568
- Shang, Y., Dai, C., Lee, M. M., Kwak, J. M., and Nam, K. H. (2016). BRI1-associated receptor kinase 1 regulates guard cell ABA signaling mediated by open stomata 1 in Arabidopsis. *Mol. Plant* 9, 447–460. doi: 10.1016/j.molp.2015.12.014
- Shatil-Cohen, A., Attia, Z., and Moshelion, M. (2011). Bundle-sheath cell regulation of xylem-mesophyll water transport via aquaporins under drought stress: A target of xylem-borne ABA? *Plant J.* 67, 72–80. doi: 10.1111/j.1365-313X.2011.04576.x
- Shimazaki, K., Doi, M., Assmann, S. M., and Kinoshita, T. (2007). Light regulation of stomatal movement. *Annu. Rev. Plant Biol.* 58, 219–247. doi: 10.1146/annurev.arplant.57.032905.105434
- Shope, J. C., Peak, D., and Mott, K. A. (2008). Stomatal responses to humidity in isolated epidermes. *Plant Cell Environ.* 31, 1290–1298. doi: 10.1111/j.1365-3040.2008.01844.x
- Takahashi, Y., Bosmans, K. C., Hsu, P. K., Paul, K., Seitz, C., Yeh, C. Y., et al. (2022). Stomatal CO₂/bicarbonate sensor consists of two interacting protein kinases, Raf-like HT1 and nonkinase-activity requiring MPK12/MPK4. *Sci. Adv.* 8, 1–14. doi: 10.1126/sciadv.abq6161
- Talbott, L. D., Rahveh, E., and Zeiger, E. (2003). Relative humidity is a key factor in the acclimation of the stomatal response to CO₂. *J. Exp. Bot.* 54, 2141–2147. doi: 10.1093/jxb/erg215
- Talbott, L. D., Srivastava, A., and Zeiger, E. (1996). Stomata from growth-chamber-grown *Vicia faba* have an enhanced sensitivity to CO₂. *Plant Cell Environ.* 19, 1188–1194. doi: 10.1111/j.1365-3040.1996.tb00434.x
- Tian, W., Hou, C., Ren, Z., Pan, Y., Jia, J., Zhang, H., et al. (2015). A molecular pathway for CO₂ response in Arabidopsis guard cells. *Nat. Commun.* 6, 1–10. doi: 10.1038/ncomms7057
- Tinoco-Ojanguren, C., and Pearcy, R. W. (1993). Stomatal dynamics and its importance to carbon gain in two rainforest Piper species - I. VPD effects on the transient stomatal response to lightflecks. *Oecologia* 94, 388–394. doi: 10.1007/BF00317114
- Töldsepp, K., Zhang, J., Takahashi, Y., Sindarovska, Y., Hörak, H., Cecilato, P. H. O., et al. (2018). Mitogen-activated protein kinases MPK4 and MPK12 are key components mediating CO₂-induced stomatal movements. *Plant J.* 96, 1018–1035. doi: 10.1111/tjp.14087
- Ullah, H., Chen, J. G., Temple, B., Boyes, D. C., Alonso, J. M., Davis, K. R., et al. (2003). The β -subunit of the Arabidopsis G protein negatively regulates auxin-induced cell division and affects multiple developmental processes. *Plant Cell* 15, 393–409. doi: 10.1105/tpc.006148
- Vahisalu, T., Kollist, H., Wang, Y. F., Nishimura, N., Chan, W. Y., Valerio, G., et al. (2008). SLAC1 is required for plant guard cell S-type anion channel function in stomatal signalling. *Nature* 452, 487–491. doi: 10.1038/nature06608
- Vogel, J. (2008). Unique aspects of the grass cell wall. *Curr. Opin. Plant Biol.* 11, 301–307. doi: 10.1016/j.pbi.2008.03.002
- Wang, X., Ullah, H., Jones, A. M., and Assmann, S. M. (2001). G protein regulation of ion channels and abscisic acid signaling in Arabidopsis guard cells. *Sci. (80-)*. 292, 2070–2073. doi: 10.1126/science.1059046
- Wu, W. H., and Assmann, S. M. (1994). A membrane-delimited pathway of G-protein regulation of the guard-cell inward K⁺ channel. *Proc. Natl. Acad. Sci. U.S.A.* 91, 6310–6314. doi: 10.1073/pnas.91.14.6310
- Xie, X., Wang, Y., Williamson, L., Holroyd, G. H., Tagliavia, C., Murchie, E., et al. (2006). The identification of genes involved in the stomatal response to reduced atmospheric relative humidity. *Curr. Biol.* 16, 882–887. doi: 10.1016/j.cub.2006.03.028
- Yaaran, A., Negin, B., and Moshelion, M. (2019). Role of guard-cell ABA in determining steady-state stomatal aperture and prompt vapor-pressure-deficit response. *Plant Sci.* 281, 31–40. doi: 10.1016/j.plantsci.2018.12.027
- Yamauchi, S., Takemiya, A., Sakamoto, T., Kurata, T., Tsutsumi, T., Kinoshita, T., et al. (2016). The plasma membrane H⁺-ATPase AHA1 plays a major role in stomatal opening in response to blue light. *Plant Physiol.* 171, 2731–2743. doi: 10.1104/pp.16.01581
- Yoshida, R., Hobo, T., Ichimura, K., Mizoguchi, T., Takahashi, F., Aronso, J., et al. (2002). ABA-activated SnRK2 protein kinase is required for dehydration stress signaling in Arabidopsis. *Plant Cell Physiol.* 43, 1473–1483. doi: 10.1093/pcp/pcf188
- Yu, Y., Chakravorty, D., and Assmann, S. M. (2018). The G protein β -subunit, AGB1, interacts with FERONIA in RALF1-regulated stomatal movement. *Plant Physiol.* 176, 2426–2440. doi: 10.1104/pp.17.01277
- Zait, Y., Ferrero-Serrano, Á., and Assmann, S. M. (2021). The α subunit of the heterotrimeric G protein regulates mesophyll CO₂ conductance and drought tolerance in rice. *New Phytol.* 232, 2324–2338. doi: 10.1111/nph.17730
- Zait, Y., Shapira, O., and Schwartz, A. (2017). The effect of blue light on stomatal oscillations and leaf turgor pressure in banana leaves. *Plant Cell Environ.* 40, 1143–1152. doi: 10.1111/pce.12907
- Zhang, W., He, S. Y., and Assmann, S. M. (2008). The plant innate immunity response in stomatal guard cells invokes G-protein-dependent ion channel regulation. *Plant J.* 56, 984–996. doi: 10.1111/j.1365-313X.2008.03657.x

Zhang, W., Jeon, B. W., and Assmann, S. M. (2011). Heterotrimeric G-protein regulation of ROS signalling and calcium currents in Arabidopsis guard cells. *J. Exp. Bot.* 62, 2371–2379. doi: 10.1093/jxb/erq424

Zhang, J., Wang, N., Miao, Y., Hauser, F., McCammon, J. A., Rappel, W. J., et al. (2018). Identification of SLAC1 anion channel residues required for CO₂/bicarbonate sensing and regulation of stomatal movements. *Proc. Natl. Acad. Sci. U.S.A.* 115, 11129–11137. doi: 10.1073/pnas.1807624115

Zhu, M., Jeon, B. W., Geng, S., Yu, Y., Balmant, K., and Chen, S. (2016a). Preparation of epidermal peels and guard cell protoplasts for cellular, electrophysiological, and -omics assays of guard cell function. *Methods Mol. Biol.* 1363, 89–121. doi: 10.1007/978-1-4939-3115-6_9

Zhu, M., Monroe, J. G., Suhail, Y., Villiers, F., Mullen, J., Pater, D., et al. (2016b). Molecular and systems approaches towards drought-tolerant canola crops. *New Phytol.* 210, 1169–1189. doi: 10.1111/nph.13866