



OPEN ACCESS

EDITED BY

Davide Guerra,
Council for Agricultural and Economics
Research (CREA), Italy

REVIEWED BY

Zi-Shan Zhang,
Shandong Agricultural University, China
Baris Uzilday,
Ege University, Türkiye

*CORRESPONDENCE

Johannes Kromdijk
✉ jk417@cam.ac.uk

RECEIVED 06 July 2023

ACCEPTED 11 September 2023

PUBLISHED 27 September 2023

CITATION

Bernardo EL, Sales CRG, Cubas LA, Vath RL
and Kromdijk J (2023) A comparison of
stomatal conductance responses to blue
and red light between C₃ and C₄
photosynthetic species in three
phylogenetically-controlled experiments.
Front. Plant Sci. 14:1253976.
doi: 10.3389/fpls.2023.1253976

COPYRIGHT

© 2023 Bernardo, Sales, Cubas, Vath and
Kromdijk. This is an open-access article
distributed under the terms of the [Creative
Commons Attribution License \(CC BY\)](#). The
use, distribution or reproduction in other
forums is permitted, provided the original
author(s) and the copyright owner(s) are
credited and that the original publication in
this journal is cited, in accordance with
accepted academic practice. No use,
distribution or reproduction is permitted
which does not comply with these terms.

A comparison of stomatal conductance responses to blue and red light between C₃ and C₄ photosynthetic species in three phylogenetically-controlled experiments

Emmanuel L. Bernardo^{1,2}, Cristina Rodrigues Gabriel Sales¹,
Lucía Arce Cubas¹, Richard L. Vath¹ and Johannes Kromdijk^{1,3*}

¹Department of Plant Sciences, University of Cambridge, Cambridge, United Kingdom, ²Institute of Crop Science, College of Agriculture and Food Science, University of the Philippines Los Baños, College, Los Baños, Laguna, Philippines, ³Carl R. Woese Institute for Genomic Biology, University of Illinois at Urbana-Champaign, Urbana, IL, United States

Introduction: C₄ photosynthesis is an adaptation that has independently evolved at least 66 times in angiosperms. C₄ plants, unlike their C₃ ancestral, have a carbon concentrating mechanism which suppresses photorespiration, often resulting in faster photosynthetic rates, higher yields, and enhanced water use efficiency. Moreover, the presence of C₄ photosynthesis greatly alters the relation between CO₂ assimilation and stomatal conductance. Previous papers have suggested that the adjustment involves a decrease in stomatal density. Here, we tested if C₄ species also have differing stomatal responses to environmental cues, to accommodate the modified CO₂ assimilation patterns compared to C₃ species.

Methods: To test this hypothesis, stomatal responses to blue and red-light were analysed in three phylogenetically linked pairs of C₃ and C₄ species from the Cleomaceae (*Gynandropsis* and *Tarenaya*), *Flaveria*, and *Alloteropsis*, that use either C₃ or C₄ photosynthesis.

Results: The results showed strongly decreased stomatal sensitivity to blue light in C₄ dicots, compared to their C₃ counterparts, which exhibited significant blue light responses. In contrast, in C₃ and C₄ subspecies of the monocot *A. semialata*, the blue light response was observed regardless of photosynthetic type. Further, the quantitative red-light response varied across species, but the presence or absence of a significant stomatal red-light response was not directly associated with differences in photosynthetic pathway. Interestingly, stomatal density and morphology patterns observed across the three comparisons were also not consistent with patterns commonly asserted for C₃ and C₄ species.

Discussion: The strongly diminished blue-light sensitivity of stomatal responses in C₄ species across two of the comparisons suggests a common C₄ feature that may have functional implications. Altogether, the strong prevalence of species-specific effects clearly emphasizes the importance of phylogenetic controls in comparisons between C₃ and C₄ photosynthetic pathways.

KEYWORDS

photosynthesis, blue light, red light, stomata, stomatal conductance, Cleomaceae, *Flaveria*, *Alloteropsis*

Introduction

Efficient coordination of carbon gain versus water loss by stomata is achieved by a range of responses to environmental factors, most notably light and CO₂. Light stimulates stomatal opening via at least two distinct signaling pathways with contrasting action spectra (Shimazaki et al., 2007), which are either perceived directly in the guard cells (GCs) or indirectly via signals derived from the underlying mesophyll (Mott, 2009; Lawson et al., 2014).

Blue light (BL) is a potent signal for stomatal opening, and GCs contain all the components required for the blue light signaling pathway (Shimazaki et al., 2007; Suetsugu et al., 2014). Blue light activates rapid stomatal opening via a pathway that is independent of photosynthesis and saturates at relatively low fluence rates. Blue light triggers the autophosphorylation of phototropins, PHOT1 and PHOT2 via their substrate BLUS1 (BLUE LIGHT SIGNALING 1) (Inoue et al., 2008; Takemiya et al., 2013). This sequentially triggers the activation of plasma membrane H⁺ ATPase pump, which hyperpolarizes the plasma membrane, leading to the uptake of K⁺ through inward-rectifying channels. The accumulation of K⁺ and other solutes drives the influx of water into the GCs and the resulting turgor change leads to stomatal opening (Shimazaki et al., 2007).

Illumination with red light (or photosynthetically active wavelengths other than blue) also triggers stomatal opening but the quantum efficiency to stimulate opening is typically lower than blue light. An indirect effect of red light that is tied to intercellular CO₂ (C_i) is triggered by high (red) light through mesophyll photosynthesis, which reduces C_i, and consequently affects g_s. However, this feedback loop does not appear to be the only mesophyll-derived signal perceived by stomata. A significant response to red light was still observed in experiments where C_i was kept constant (Messinger et al., 2006). In addition, epidermal peel experiments revealed that GC responses to red light are reversibly altered by the presence of the underlying mesophyll tissue. Thus, an additional link between mesophyll photosynthesis and guard cell responses may exist (Lawson et al., 2014). The identity of the mesophyll signal however remains unresolved.

Plants with C₄ photosynthesis are distinct from C₃ plants in anatomy and biochemistry. C₄ operates a CO₂-concentrating

mechanism (CCM) between two morphologically different cell types, bundle sheath cells (BSC) and mesophyll (M) cells (Sage, 2004). Having a CCM alters the relationship of photosynthesis with CO₂ in C₄ species which confers them a photosynthetic advantage over C₃ species under saturating light conditions and hot environments (Bowyer and Leegood, 1997). In these environments, C₄ species typically display higher intrinsic water use efficiency and net assimilation rates (Sage, 2004) compared to C₃ species (Lambers and Oliveira, 2019). It can therefore be argued that differential stomatal regulation is required to optimize photosynthetic capacity and water use efficiency between C₃ and C₄ species. And that the mesophyll signal argued above may be different between C₃ and C₄ species. However, not much is known about stomatal sensitivities with regard to photosynthetic types under various light and CO₂ environments.

Comparisons between C₄ and C₃ species can easily be confounded by phylogenetic distance between the species, which would lead to differences not necessarily associated with the photosynthetic pathway (Monson, 1996; Taylor et al., 2010). For instance, contrasting blue light responses in C₃ and C₄ were observed in crop species (Zhen and Bugbee, 2020), but the findings could not be directly linked to photosynthetic type alone because the species examined were separated by considerable phylogenetic distance. Closely related species or even subspecies with differing photosynthetic pathways offer a way around this issue, allowing a comparison between photosynthetic types while controlling for evolutionary distance (Monson, 1996; Huxman and Monson, 2003).

In this study, blue and red-light stomatal responses were studied in three phylogenetically-controlled experiments, using closely related species from the Cleomaceae (*Gynandropsis* and *Tarenaya*), *Flaveria*, and *Alloteropsis*, that use either C₃ or C₄ photosynthesis. The results show a striking lack of sensitivity to blue light in the C₄s *Gynandropsis gynandra*, and *F. trinervia* and *F. bidentis*, compared to their C₃ counterparts *Tarenaya hassleriana*, and *F. cronquistii* and *F. robusta*, which exhibited significant blue light responses. In contrast, in *A. semialata*, the blue light response was observed regardless of photosynthetic type. The quantitative red-light response varied between species, however the presence or absence of a significant stomatal red-light response was not related to differences in photosynthetic pathway.

Materials and methods

Plant materials

Stomatal responses were compared across closely related C_3 and C_4 species from the Cleomaceae (Cleomaceae), Asteraceae (*Flaveria*), and Poaceae (*Alloteropsis*), with considerable phylogenetic distance separating each of the controlled comparisons. From the genus Cleomaceae, *Tarenaya hassleriana* (C_3) was compared with *Gynandropsis gynandra* (C_4 , NAD-ME subtype). Seeds of C_3 *T. hassleriana* (Cleomaceae) were obtained from Prof. Julian Hibberd's group (Cambridge, UK). From the genus *Flaveria*, *F. trinervia* and *F. bidentis* (C_4 -NADP-ME) were initially compared with *Flaveria pringlei* as the C_3 representative. However, the *F. pringlei* accession that most manuscripts have described and was used here, likely has seen some hybridization with *Flaveria angustifolia* in its history, which is a C_3 - C_4 intermediate. We therefore decided to do a second set of experiments using *F. cronquistii* and *F. robusta* as 'true' C_3 species in addition to the three aforementioned species. Seeds of *F. bidentis*, *F. trinervia*, and *F. pringlei* were a kind gift from Dr. Peter Westhoff (University of Dusseldorf, Germany). Clonal plants of *F. cronquistii* and *F. robusta* were a gift from Dr. Marjorie Lundgren (Lancaster University, UK) and Prof. Julian Hibberd (Cambridge University, UK), respectively. Finally, from the genus *Alloteropsis*, *A. semialata* subsp. *eckloniana* GMT (C_3) and *A. semialata* subsp. *semialata* MDG and MAJ (both C_4 , mixed NADP-ME-PEPCK subtypes) were a gift from Prof. Pascal-Antoine Christin (University of Sheffield, UK).

Growth conditions

Individual seedlings of *G. gynandra* and *T. hassleriana* were grown from seeds and transferred in 10 cm H x 9 cm L x 9 cm W plastic pots with M3 compost (Levington[®], Scotts, Ipswich, UK). Seeds of C_4 *F. bidentis*, C_4 *F. trinervia*, and C_3 -like *F. pringlei* were also germinated on M3 compost. The seedlings and clonal plants of C_3 *F. cronquistii* and C_3 *F. robusta* propagated from cuttings were grown in 10 cm H x 9 cm L x 9 cm W plastic pots containing M3 compost.

The Cleomaceae and *Flaveria* species were grown in an environmentally-controlled growth room at the Plant Growth Facility (PGF), Department of Plant Sciences, University of Cambridge. Photoperiod was kept at 16 hours (6:00 to 22:00) of light supplied by fluorescent lamps with a photosynthetic photon flux density (PPFD) of 300 $\mu\text{mol m}^{-2} \text{s}^{-1}$. The growth room was maintained at day and night temperatures of 20°C and 60% RH at ambient CO_2 .

The *Alloteropsis* accessions were grown at the Cambridge Botanic Gardens Glasshouse. Plants were vegetatively propagated to contain 2-3 tillers per 1 L pots filled with 4:1 M3 compost: coarse vermiculite and 5 g controlled-release fertilizer (Osmocote[®], Scotts Miracle-Gro Company, Marysville, OH, USA). Supplemental light from sodium halide lamps (140-160 W m^{-2}) was provided from 4:00

to 20:00. Greenhouse set point temperature was at 18°C, while nighttime temperatures were at 15°C. CO_2 and RH were at ambient.

Gas exchange measurements

An open gas exchange system (LI-6400XT, LI-COR, Lincoln, NE, USA) with an integrated fluorometer and light source (LI-6400-40, LI-COR) was used to measure stomatal conductance (g_s) and CO_2 assimilation rate (A) at a range of different conditions as specified below.

All gas exchange data were collected from the youngest expanded leaf from plants with 4-5 sets of mature leaves.

Experimental design

Red and blue light switchover experiment

To characterize stomatal responses to blue light, a series of switchover protocols were designed comprising sequential changes between 100% red (R) and 75% red + 25% blue light (RB), while keeping the total PPFD equal. Peak wavelengths for R and B lights in the LI-6400XT instruments are 635 and 465 nm, respectively. In Sequence R→RB→R, leaves were first acclimated to steady-state under 100% red light, and then switched to 75% red and 25% blue light, and then back to the original light environment of 100% red light. In some cases the complementary switchover experiment RB→R→RB was performed, and in this case, leaves were first acclimated to steady-state under 75% red and 25% blue light. 500 $\mu\text{mol m}^{-2} \text{s}^{-1}$ PPFD was maintained throughout the time course for this experiment. The choice for 75% red + 25% blue was based on the fact that 125 $\mu\text{mol m}^{-2} \text{s}^{-1}$ is sufficient to saturate the stomatal blue light response, and red background light is often found to enhance the blue light response. Each switchover experiment was initiated when steady state was reached (typically after 2 h). Gas exchange measurements were logged every 60 s throughout the protocol. After logging the first 5 min (in Cleomaceae and *Alloteropsis*) and 10 min (in *Flaveria*) of the steady state condition, the light composition was switched to either red or red +blue, followed finally by a switch back to the initial light composition. During each phase gas exchange parameters were logged for 60 mins (in the Cleomaceae and *Alloteropsis*) and 50 mins (in *Flaveria*). Thus, for each measurement series, 125 mins were recorded for Cleomaceae and *Alloteropsis* subspecies and 100 mins for *Flaveria*. The initial experiment in *Flaveria* was performed using C_3 -like *F. pringlei*, C_4 *F. trinervia* and C_4 *F. bidentis*. However, because C_3 -like *F. pringlei* has proto-Kranz (Sage, 2016), it is not considered a canonical C_3 . Therefore, a repeat experiment in *Flaveria* was performed to include two true C_3 species, *F. cronquistii* and *F. robusta*. For this experiment, only sequence R→RB→R was repeated, since the previous experiments had shown that both sequences yielded very similar results. Reference CO_2 during the experiment was controlled at 400 $\mu\text{mol mol}^{-1}$, block temperature was kept at 25°C and average VPD was ca. 1.2 kPa. All measurements were taken between 10:00 and 16:00 h.

Determination of the red-light response under constant C_i

To characterize the red-light response of stomatal conductance, the protocol by [Messinger et al. \(2006\)](#) was adopted. This protocol measures the stomatal response to red light, while controlling for the potentially confounding effect of the stomatal CO_2 response by maintaining a constant intercellular CO_2 concentration (C_i) at each light intensity. Briefly, the Messinger protocol involved illuminating the leaf segment clamped inside the cuvette with $800 \mu\text{mol m}^{-2} \text{s}^{-1}$ red-light to steady state. Subsequently, the PPFD was lowered stepwise from 800, 600, 400, and $200 \mu\text{mol m}^{-2} \text{s}^{-1}$, each change was initiated once steady state of stomatal conductance was achieved. As A and g_s changed in response to the new light environment, CO_2 was manually adjusted using the mixer millivolt signal to keep C_i at the value observed at $800 \mu\text{mol m}^{-2} \text{s}^{-1}$.

Stomatal morphology and density using epidermal impressions

Epidermal imprints from all species, except for *Flaveria trinervia*, were taken from adaxial and abaxial layers using clear nail varnish (Rimmel, London) using the same leaves used for gas exchange measurements. Dried nail varnish was lifted from the leaf using sticky tape (Sellotape) and affixed onto glass slides. Images were captured using a Nikon microscope (Olympus BX41, Japan) fitted with a CCD camera (U-TV0.5zc-3/Micropublisher 3.3 RTV, Olympus, Japan) and installed with Q-Capture Pro 7 imaging software. Total magnifications of x200 and x400 (Olympus WHB 10x/20 eyepiece x Olympus PN 20x/0.40 or PCN 60x/0.80 objectives) were used for stomatal density counting and investigation of stomatal anatomical parameters, respectively, unless stated otherwise. For *Flaveria trinervia* the quality of nail varnish impressions was not sufficient to collect stomatal anatomical parameters, data were instead collected from epidermal peels, using the same microscopy set up with a total magnification of x400. Therefore, these data were not from the same leaf as was used for gas exchange but instead were taken from other leaves at the same developmental stage.

To assess stomatal size (SS), guard cell width (GCW) and guard cell length (GCL) were measured using Fiji software ([Schindelin et al., 2012](#)). SS was calculated using the formula for the area of an ellipse. Stomatal density (SD) was calculated as the number of stomata per unit area (mm^{-2}). A stoma was counted if >50% was located within the field of view. Four random microscopic fields of view each from the abaxial and adaxial surfaces were collected from 3-5 biological replicates, giving >350 stomata per species, except C_3 *F. cronquistii* and C_4 *F. trinervia*.

Statistical analysis

For the red and red+blue light switchover experiments, pairs of C_3 and C_4 species were measured in parallel between 10:00 and

16:00 h to control for the effect of circadian rhythms on stomatal conductance. Each phylogenetically-controlled comparison was an independent experiment. To estimate the impact of light on stomatal conductance resulting from the shift from one light environment to the next, a linear mixed-effects model was used. Light was the within-subject factor and species was the between-subject factor. Biological replicates were treated as random variables. To carry out the analysis, g_s and A at the introduction or removal of blue light ($t = 5$ min and $t = 65$ min, $R \rightarrow BR \rightarrow R$) or the reverse ($t = 5$ and $t = 65$, $BR \rightarrow R \rightarrow BR$), and the final g_s at $t = 125$ min were extracted from the gas exchange time series. Planned contrasts were used to compare independent group means. Linear mixed-effects model was also fitted to the red-light response data set. Red-light PPFD and species were assigned as within- and between-subject variables, respectively, while individual biological replicates were treated as random variables. For every genus, the density of stomata on the abaxial and adaxial surfaces was analyzed using a two-way ANOVA, and planned contrasts were used to compare group means. Data on stomatal size were also analysed using ANOVA and *post-hoc* comparisons were carried out using Tukey's HSD at an $\alpha=0.05$. The statistical tests were carried out using R, version 4.2.1 ([R Core Team, 2023](#)) and RStudio, version 2023.6.0.421 ([Posit Team, 2023](#)) and JMP Pro 17 (SAS Institute). Graphs were plotted using R, version 4.2.1 and RStudio, version 2022.07.1 and the *ggplot2* package ([Wickham, 2016](#)). Figures were compiled using the *ggpubr* package ([Kassambara, 2023](#)).

Results

Stomatal sensitivity to blue light is lower in C_4 species from the genus *Cleomaceae* and *Flaveria* compared to their C_3 counterparts

To compare the sensitivity of stomatal opening to blue light relative to red light of equal intensity between C_3 and C_4 species, gas exchange was measured in response to a sequence of 75% red:25% blue (RB) light to 100% red (R) with a total PAR of $500 \mu\text{mol photons m}^{-2} \text{s}^{-1}$ as well as the reverse sequence. Following steady state g_s of $0.49 \text{ mol H}_2\text{O m}^{-2} \text{s}^{-1}$ at R light, g_s in the C_3 species *T. hassleriana* increased gradually to $0.64 \text{ mol H}_2\text{O m}^{-2} \text{s}^{-1}$ upon shifting to RB light and the effect was rapidly reversed when the light was returned to R ([Figure 1A](#) and [Table S1](#)). Similarly, when moving from $RB \rightarrow R$ in the reverse sequence, C_3 *T. hassleriana* rapidly declined from 0.38 to $0.20 \text{ mol H}_2\text{O m}^{-2} \text{s}^{-1}$, and gradually increased again by the switch from $R \rightarrow RB$ over the course of an hour ([Figure 1B](#) and [Table S2](#)). In contrast, no effects of the $R \rightarrow RB \rightarrow R$ sequence, nor the reverse $RB \rightarrow R \rightarrow RB$ sequence were observed on g_s in the C_4 species *G. gynandra*, which remained invariable at $0.19 \text{ mol H}_2\text{O m}^{-2} \text{s}^{-1}$ ([Figures 1C, D](#); [Tables S1](#) and [S2](#)). It is also worth noting that the strong stomatal movements in C_3 *T. hassleriana* did not correspond to parallel responses in A ([Figures S1A, B](#); [Tables S3](#) and [S4](#)), which instead was not significantly impacted by the changes in light composition in either of the *Cleomaceae* species ([Figures S1C, D](#); [Tables S1-S4](#)).

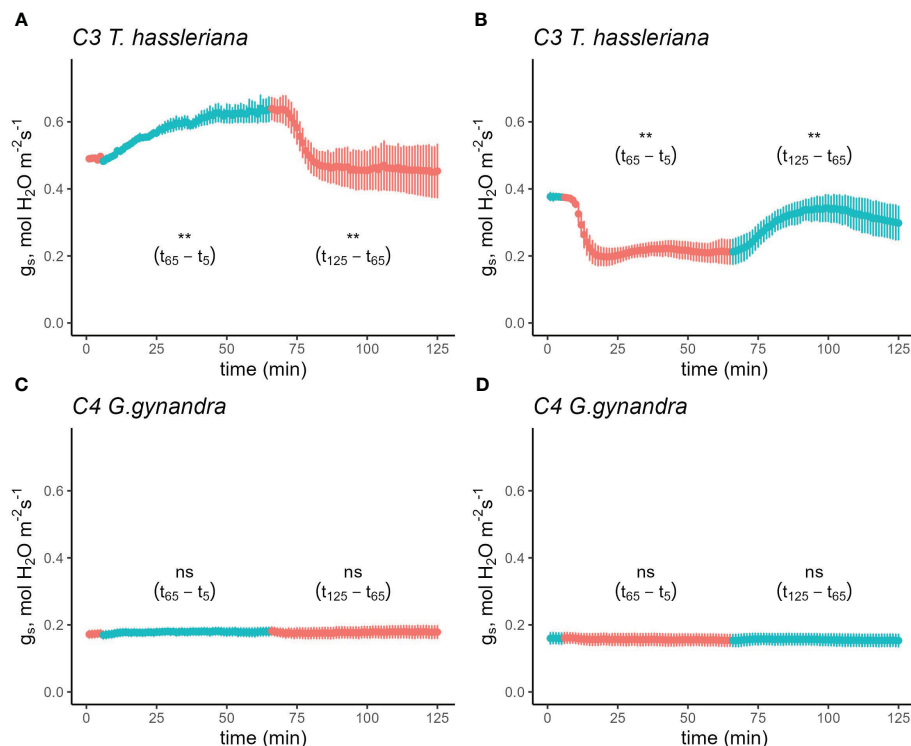


FIGURE 1

Time course of stomatal conductance (g_s) response in C_3 *T. hassleriana* (A, B) and C_4 *G. gynandra* (C, D) in response to a sequence of 75% red + 25% blue light and vice versa. Leaves were initially acclimated in either 100% red (A, C) or 75% red+25% blue light (B, D) until steady-state was achieved (time = 0 in the figure). Subsequently, the light environment was switched depending on the initial light condition while maintaining a photosynthetic photon flux density of $500 \mu\text{mol m}^{-2} \text{s}^{-1}$. Subsequently, the leaves were acclimated to the new light condition for 1 h before returning it back to the original condition. Light conditions were reversed at t_6 and t_{65} . Reference CO_2 was maintained at $400 \mu\text{mol mol}^{-1}$, block temperature was kept at 25°C and average VPD was 1.2 kPa. Data points represent mean \pm se ($n=4-5$).

To find out if these differences between C_3 and C_4 Cleomeaceae species were representative of general differences in stomatal responses between photosynthetic pathways, the R→RB→R sequence was also performed on *Flaveria*, another genus which contains C_3 , C_3 - C_4 , and C_4 species. The differences in blue light response between C_3 and C_4 species were also present in *Flaveria* (Figure S2 and Tables S5 and S6). However, to account for the fact that the first set of *Flaveria* experiments used the proto-Kranz C_3 -like species *F. pringlei* as the C_3 representative, the experiment was repeated to include two other C_3 *Flaveria* species, *F. robusta* and *F. cronquistii*. Since the complementary sequence RB→R→RB yielded the same results as the R→RB→R sequence, only the latter R→RB→R sequence was repeated (Figure 2) on two C_3 species, *F. robusta* (Figure 2A) and *F. cronquistii* (Figure 2B), as well as the two C_4 species, *F. trinervia* (Figure 2C) and *F. bidentis* (Figure 2D) and C_3 -like *F. pringlei* (Figure 2E). After reaching steady state in R, g_s increased significantly from $0.22 \text{ mol H}_2\text{O m}^{-2} \text{ s}^{-1}$ to $0.28 \text{ mol H}_2\text{O m}^{-2} \text{ s}^{-1}$ in *F. robusta* upon the switch to RB and from $0.30 \text{ mol H}_2\text{O m}^{-2} \text{ s}^{-1}$ to $0.36 \text{ mol H}_2\text{O m}^{-2} \text{ s}^{-1}$ in C_3 *F. cronquistii* (Figure 2B). On the other hand, g_s in C_4 *F. trinervia* showed only a slight increase from $0.11 \text{ mol H}_2\text{O m}^{-2} \text{ s}^{-1}$ to $0.13 \text{ mol H}_2\text{O m}^{-2} \text{ s}^{-1}$ under RB light (Figure 2C), and similarly g_s in C_4 *F. bidentis* remained unchanged at $0.13 \text{ mol H}_2\text{O m}^{-2} \text{ s}^{-1}$ (Figure 2D). Finally, in C_3 -like *F. pringlei*, from an initial g_s of $0.16 \text{ mol H}_2\text{O m}^{-2} \text{ s}^{-1}$ it rose to $0.19 \text{ mol H}_2\text{O m}^{-2} \text{ s}^{-1}$ under BR (Figure 2E). Further,

the stimulating effects on g_s of the R→RB switch in the C_3 and C_3 -like species were largely reversed by the switch back to R light, but again g_s remained unaffected in the C_4 species (Table S7). The light composition switches marginally, but significantly affected the rate of net CO_2 assimilation among the five species with slight lower rates of *A* under the RB part of the experiment (Figure S3 and Table S8, $p=0.0122$).

C_3 and C_4 subspecies of *A. semialata* display the canonical blue light response

Cleomeaceae and *Flaveria* are both dicotyledonous species, but C_4 photosynthesis is also quite prevalent in the monocots (Sage, 2004). Monocot species have stomatal features distinctly different from dicots (Bertolino et al., 2019). To determine if the stomatal responses described above also extend to congeneric C_3 and C_4 species in the monocots, the R→RB→R switchover experiment was also performed on C_3 and C_4 *A. semialata* subspecies (Figure 3). In this case, significant stimulation of g_s in response to the R→RB switch was observed across both C_3 and C_4 subspecies, increasing from 0.05 to $0.07 \text{ mol H}_2\text{O m}^{-2} \text{ s}^{-1}$ and returning to $0.05 \text{ mol H}_2\text{O m}^{-2} \text{ s}^{-1}$ in response to the RB→R switch.

After reaching steady state in R, g_s increased significantly from $0.05 \text{ mol H}_2\text{O m}^{-2} \text{ s}^{-1}$ to $0.07 \text{ mol H}_2\text{O m}^{-2} \text{ s}^{-1}$ in C_3 *A. semialata*

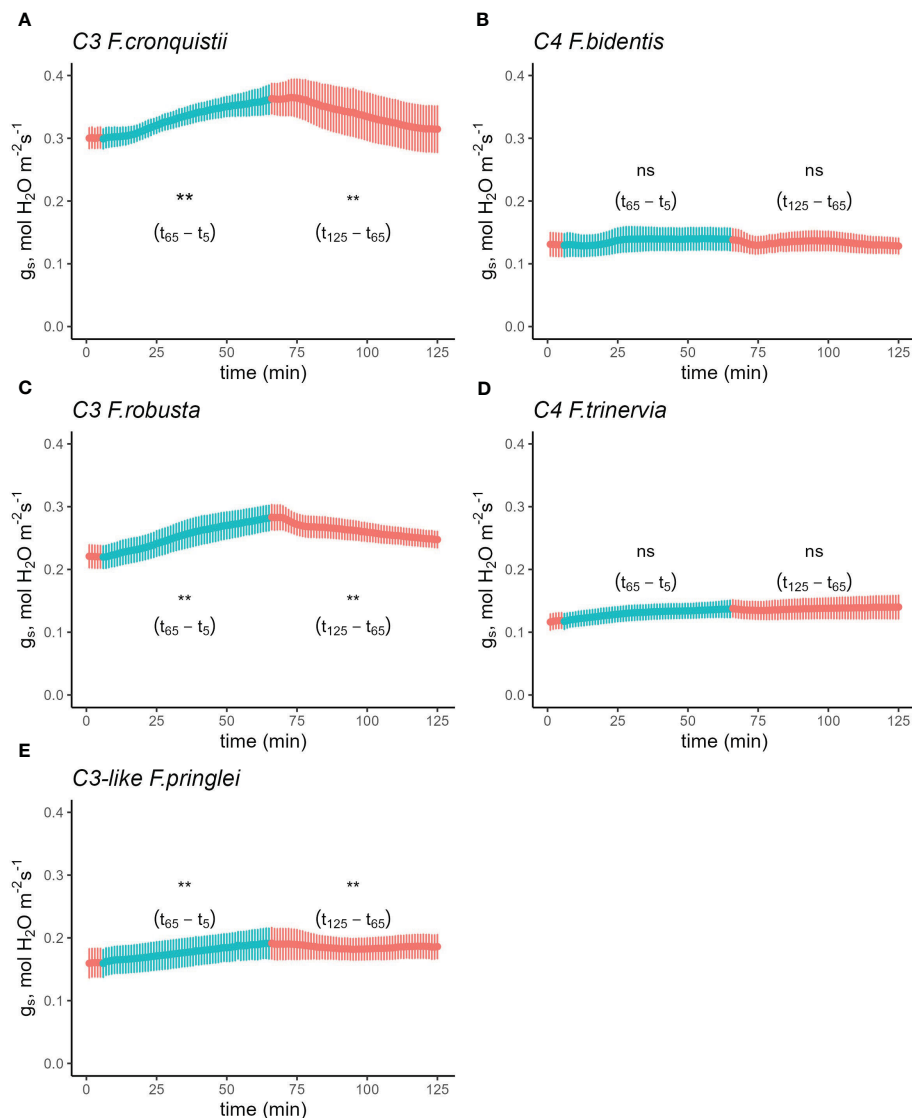


FIGURE 2

Time course of stomatal conductance (g_s) response in C_3 *F. robusta* (A), C_3 *F. cronquistii* (B), C_4 *F. trinervia* (C), C_4 *F. bidentis* (D), and (E) C_3 -like *F. pringlei* in response to a sequence of 100% red and 75% red + 25% blue light. Leaves were initially acclimated under 100% red light until steady state was achieved (time = 0 in the figure). Subsequently, the light environment was switched to 75% red + 25% blue light while maintaining a photosynthetic photon flux density of $500 \mu\text{mol m}^{-2} \text{s}^{-1}$. The leaves were acclimated to the new light condition for 1 h before returning them back to the original condition for another hour before terminating the experiment. Light conditions were reversed at t_6 and t_{65} . Reference CO_2 was maintained at $410 \mu\text{mol mol}^{-1}$, block temperature was kept at 25°C and average VPD was 1.2 kPa. Data points represent mean \pm se ($n=4-5$). ** indicates significant difference at $\alpha = 0.05$; ns, not significant.

GMT upon the switch to RB, and then returned to $0.05 \text{ mol H}_2\text{O m}^{-2} \text{ s}^{-1}$ when the light was shifted back to R (Figure 3A; Table S9). Both C_4 *A. semialata* ('MDG' and 'MAJ') increased from $0.04 \text{ mol H}_2\text{O m}^{-2} \text{ s}^{-1}$ to $0.05 \text{ mol H}_2\text{O m}^{-2} \text{ s}^{-1}$ under RB, and back to 0.04 when the light was reversed to R (Figures 3C, D).

In the reverse sequence, g_s followed a similar pattern. In C_3 *A. semialata* 'GMT', g_s was $0.07 \text{ mol H}_2\text{O m}^{-2} \text{ s}^{-1}$ at the start of R, which then dropped to $0.05 \text{ mol H}_2\text{O m}^{-2} \text{ s}^{-1}$ under R, and returned to $0.07 \text{ mol H}_2\text{O m}^{-2} \text{ s}^{-1}$ when light was changed to RB (Figure 3B; Table S10). Following steady state, the initial g_s in C_4

A. semialata 'MDG' under RB was $0.08 \text{ mol H}_2\text{O m}^{-2} \text{ s}^{-1}$, which rapidly declined to $0.06 \text{ mol H}_2\text{O m}^{-2} \text{ s}^{-1}$, with a final g_s of $0.06 \text{ mol H}_2\text{O m}^{-2} \text{ s}^{-1}$ (Figure 3D). Similarly, g_s in C_4 *A. semialata* 'MAJ' went

from 0.07 to 0.05 and back to $0.07 \text{ mol H}_2\text{O m}^{-2} \text{ s}^{-1}$ throughout of the sequence (Figure 3E).

Under $\text{R} \rightarrow \text{RB} \rightarrow \text{R}$ and the reverse sequence, $\text{RB} \rightarrow \text{R} \rightarrow \text{RB}$, fitting the g_s data to a linear mixed-effects model (Tables S8 and S9) showed a highly significant effect of light (R-RB-R , $p=0.0007$; RB-R-RB , $p=0.0060$), but the main effect of species (R-RB-R , $p=0.3455$; RB-R-RB , $p=0.8859$) and its interaction with light (R-RB-R , $p=0.2055$; RB-R-RB , $p=0.7486$) were not significantly different.

Although neither sequence had a clear effect on *A* (Figure S4), linear mixed-effects model analysis of *A* under $\text{R} \rightarrow \text{RB} \rightarrow \text{R}$ showed a significant main effect of light ($p=0.0013$) (Table S10), this same relationship could not be detected in the reverse sequence (Table

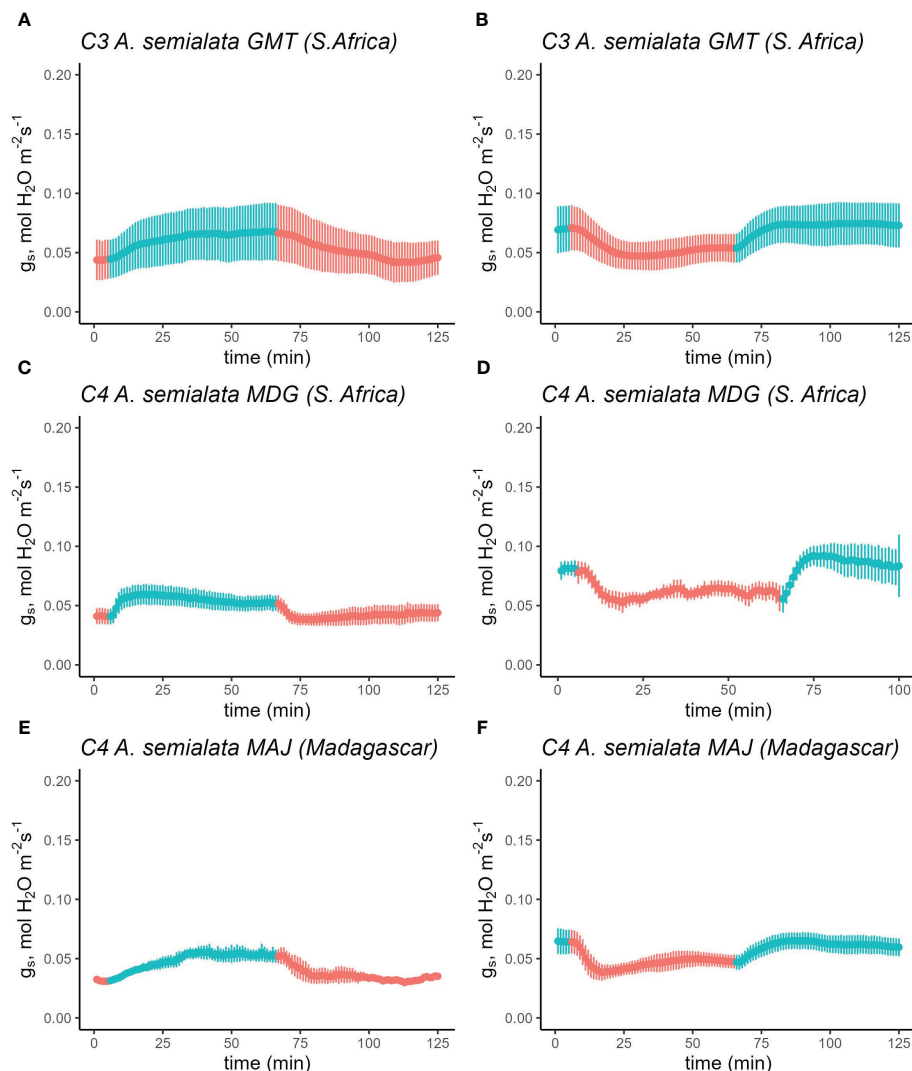


FIGURE 3

Time course of stomatal conductance (g_s) response in C_3 *A. semialata* subsp. eckloniana 'GMT' (A, B), C_4 *A. semialata* subsp. semialata 'MDG' (C, D) and C_4 *A. semialata* subsp. semialata 'MAJ' (E, F) in response to a sequence of 75% red + 25% blue light and vice versa. Leaves were initially acclimated in either 100% red (A, C, E) or 75% red+25% blue light (B, D, F) until steady-state was achieved (time = 0 in the figure). Subsequently, the light environment was switched depending on the initial light condition while maintaining a photosynthetic photon flux density of $500 \mu\text{mol m}^{-2} \text{s}^{-1}$. The leaves were acclimated to the new light condition for 1 h before returning it back to the original light condition. Reference CO_2 was maintained at $410 \mu\text{mol mol}^{-1}$, block temperature was kept at 25°C and average VPD was 1.2 kPa . Data points represent mean \pm se ($n=3-4$).

S11, $p=0.1395$). Both main effects in the reverse sequence were also not significant.

Red light response in phylogenetically-close pairs of C_3 and C_4 at constant C_i

To evaluate the quantitative red-light stomatal response, gas exchange was measured at different red PPFs. The depletion of CO_2 in the mesophyll can give rise to an apparent red light response (Roelfsema et al., 2002) which was not the focus of the experiments here, therefore the stomatal response to red light was evaluated under constant C_i .

In Cleomaceae, C_3 *T. hassleriana* showed a drop in steady state g_s from $0.42 \text{ mol H}_2\text{O m}^{-2} \text{ s}^{-1}$ to $0.26 \text{ mol H}_2\text{O m}^{-2} \text{ s}^{-1}$ when red light

intensity was reduced step-wise from $800 \mu\text{mol m}^{-2} \text{ s}^{-1}$ to $200 \mu\text{mol red photons m}^{-2} \text{ s}^{-1}$ (Figure 4A) while C_i was maintained at $288 \mu\text{mol CO}_2 \text{ mol}^{-1}$ (Figure 4B). Stomatal conductance in C_4 *G. gynandra* remained consistent around $0.15 \text{ mol H}_2\text{O m}^{-2} \text{ s}^{-1}$ at the starting light intensity of $800 \mu\text{mol m}^{-2} \text{ s}^{-1}$ red light (Figure 4C), while C_i was held constant at $173 \mu\text{mol CO}_2 \text{ mol}^{-1}$ (Figure 4D) and only slightly decreased to $0.12 \text{ mol H}_2\text{O m}^{-2} \text{ s}^{-1}$ when light was set to $200 \mu\text{mol red photons m}^{-2} \text{ s}^{-1}$. Using a linear mixed-effects model, the interaction of photosynthetic type and red PPF on g_s was found to be significant ($p=0.046$) (Table S14), as a result of the significantly weaker red-light response in *G. gynandra* compared to *T. hassleriana*. In both species *A* significantly responded to red light PPF ($p<0.001$) (Figure S5 and Table S15).

In Flaveria, C_3 *F. cronquistii* showed an average g_s of $0.36 \text{ mol H}_2\text{O m}^{-2} \text{ s}^{-1}$ at $800 \mu\text{mol red photons m}^{-2} \text{ s}^{-1}$ which decreased to

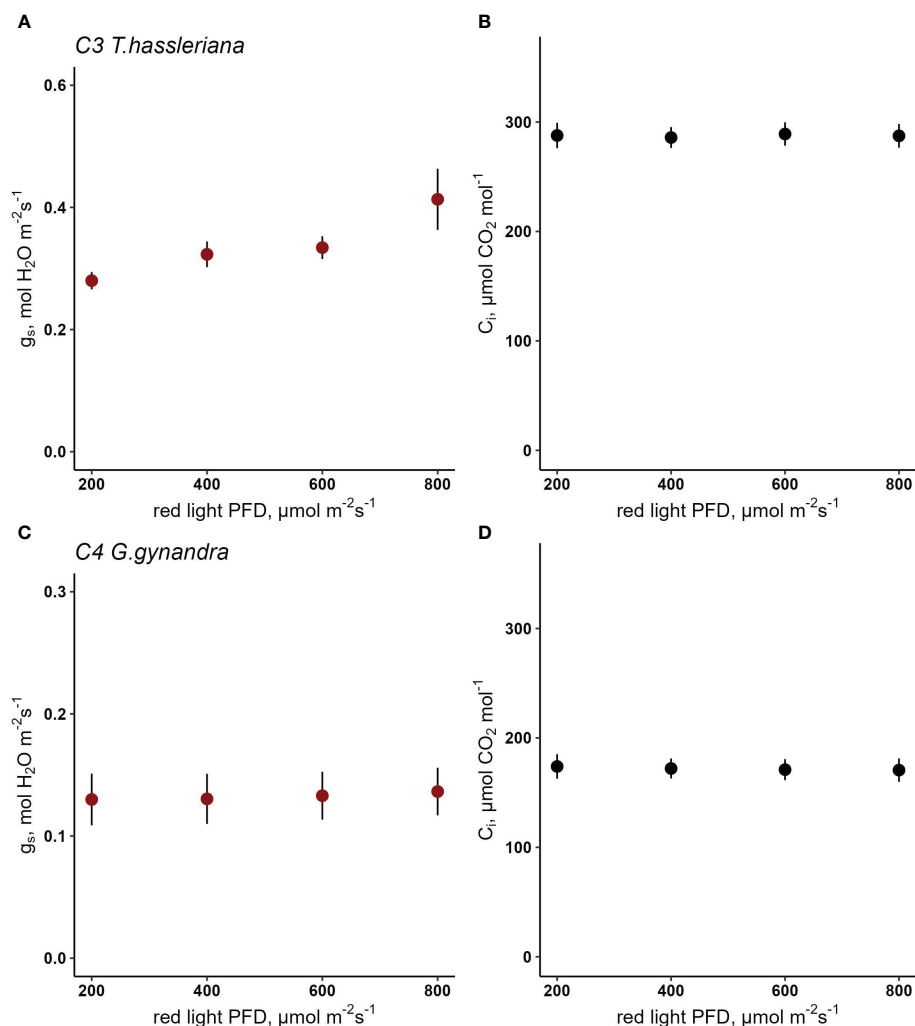


FIGURE 4

Response of stomatal conductance (g_s) to red light photosynthetic photon flux density (PPFD) in C_3 *T. hassleriana* (A) and C_4 *G. gynandra* (B) at constant C_i (C, D). A linear mixed-effects model analysis was carried out to test if photosynthetic type influences the response to red light in congeneric species belonging to Cleomeaceae. Data points represent mean \pm se ($n=3-4$).

0.27 mol $\text{H}_2\text{O m}^{-2} \text{s}^{-1}$ at 200 $\mu\text{mol photons m}^{-2} \text{s}^{-1}$ while C_i was kept constant at 296 $\mu\text{mol CO}_2 \text{ mol}^{-1}$ (Figures 5A, B). C_3 *F. robusta* had a lower overall g_s , which started from 0.17 mol $\text{H}_2\text{O m}^{-2} \text{s}^{-1}$ and decreased to 0.13 mol $\text{H}_2\text{O m}^{-2} \text{s}^{-1}$ at a C_i of 247 $\mu\text{mol CO}_2 \text{ mol}^{-1}$ (Figures 5C, D). Meanwhile steady state g_s in C_4 *F. bidentis* under 800 $\mu\text{mol red photons m}^{-2} \text{s}^{-1}$ was 0.18 mol $\text{H}_2\text{O m}^{-2} \text{s}^{-1}$ which slowly decreased to 0.13 mol $\text{H}_2\text{O m}^{-2} \text{s}^{-1}$ with the decrease in light intensity (Figure 5E), but while holding C_i constant at 157 $\mu\text{mol CO}_2 \text{ mol}^{-1}$ (Figure 5F). g_s in C_4 *F. trinervia* was practically unchanged in response to red light intensity ranging between 0.12 and 0.10 $\text{H}_2\text{O m}^{-2} \text{s}^{-1}$ (Figures 5G, H). Finally, C_3 -like *F. pringlei* had a g_s of 0.19 mol $\text{H}_2\text{O m}^{-2} \text{s}^{-1}$ to 0.15 mol $\text{H}_2\text{O m}^{-2} \text{s}^{-1}$ (Figure 5I) as light intensity was reduced while keeping C_i at 240 $\mu\text{mol CO}_2 \text{ mol}^{-1}$ (Figure 5J). Fitting the g_s data to a linear mixed-effects model showed a highly significant species ($p < 0.0001$) and red-light PPF ($p < 0.0001$) main effects, and a non-significant interaction effect ($p = 0.6789$) (Table S15). The significance of the red-light effect demonstrates that despite the limited range of the response,

stomata did respond significantly to red-light. The strong significance of the species effect demonstrates that the absolute values of stomatal conductance differed significantly between *Flaveria* species in line with photosynthetic type. However, the presence of a non-significant interaction between species and red light demonstrates that the magnitude of the stomatal red-light response did not differ significantly between these species. Not surprisingly, CO_2 assimilation rate responded strongly to light intensity in all five species (Figure S4 and Table S16), suggesting that the significant stomatal red-light response in these species may serve to fine-tune coordination between stomatal conductance and photosynthesis, in concert with the stomatal CO_2 response.

The stomatal red-light response was also characterized for C_3 *A. semialata* subsp. *eckloniana* and C_4 *A. semialata* subsp. *semialata* (Figures 6A, C). When PPF was reduced from 800 to 200 $\mu\text{mol red photons m}^{-2} \text{s}^{-1}$ for C_3 *A. semialata* subsp. *eckloniana*, g_s changed very little from 0.07 to 0.05 mol $\text{H}_2\text{O m}^{-2} \text{s}^{-1}$ (Figures 6A, B). Similarly, the C_4 *A. semialata* subsp. *semialata* kept g_s at

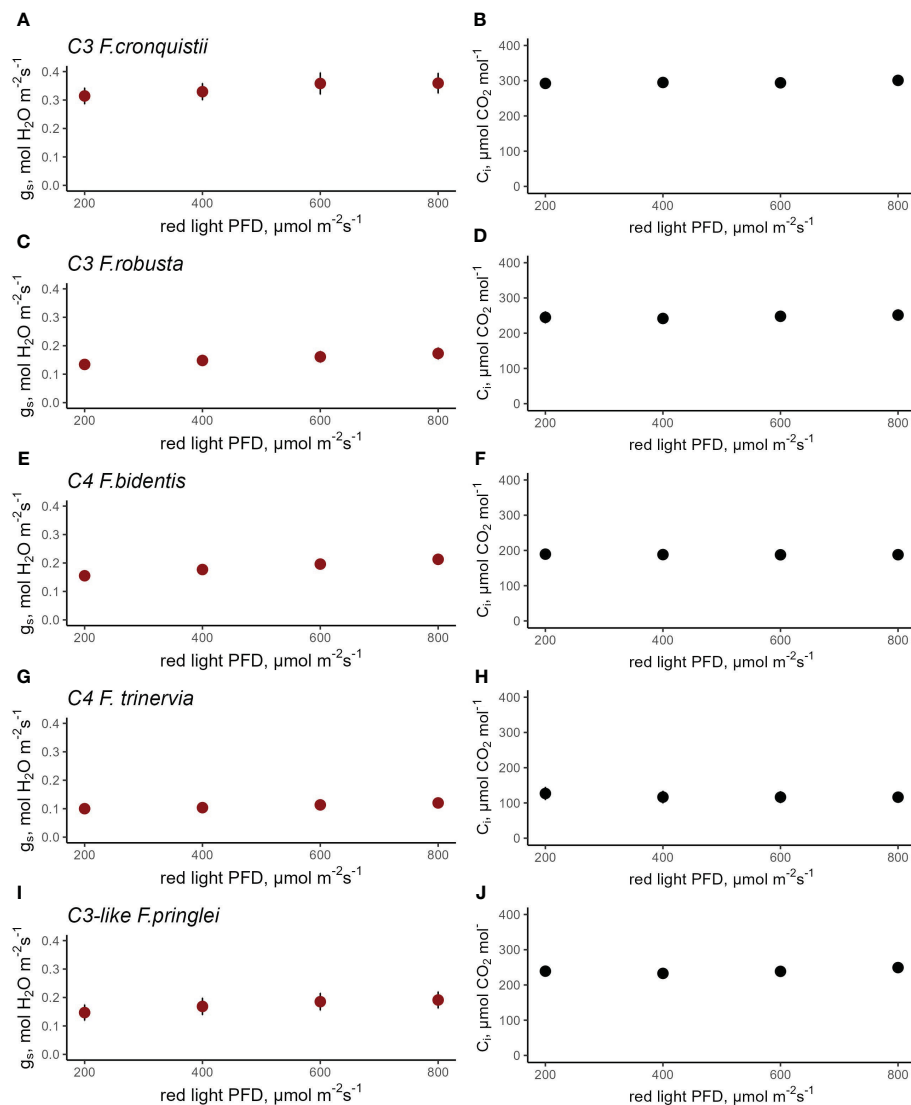


FIGURE 5
Response of stomatal conductance (g_s) to red light photosynthetic photon flux density (PPFD) at constant intercellular CO_2 concentration (C_i) in C_3 *F. cronquistii* (A, B, $n=4$) and C_3 *F. robusta* (C, D, $n=5$), C_4 *F. bidentis* (E, F, $n=8$), C_4 *F. trinervia* (G, H, $n=5$), and C_3 -like *F. pringlei* (I, J, $n=5$). A linear mixed-effects model analysis was carried out to test if photosynthetic type influences the response to red light in congeneric species belonging to *Flaveria*. Data points represent the mean \pm se.

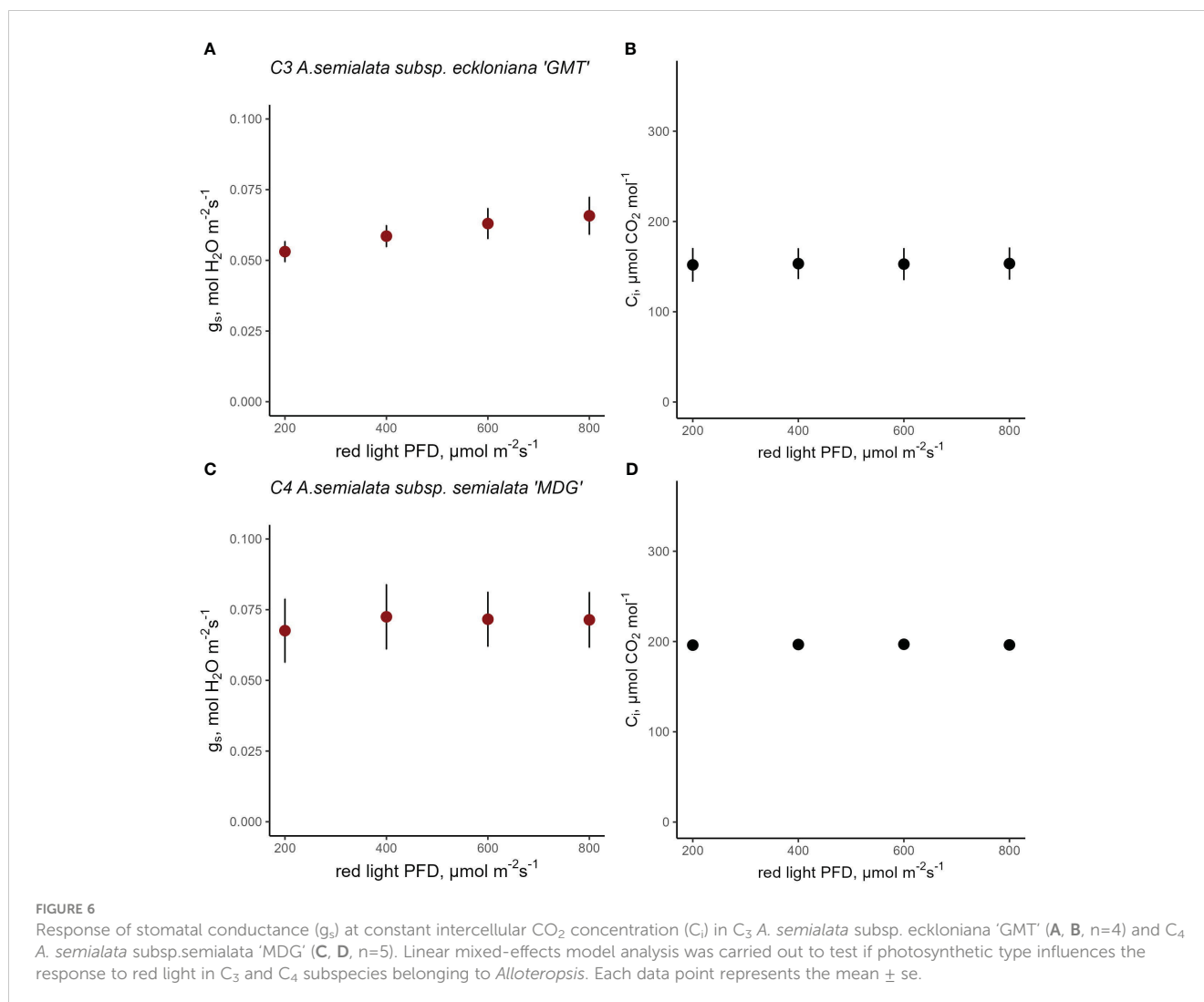
approximately $0.07 \text{ mol H}_2\text{O m}^{-2} \text{ s}^{-1}$ despite the decrease in red PPF (Figures 6C, D). Curiously the C_4 subspecies (Figure 6D) had a higher C_i than the C_3 subspecies at $800 \mu\text{mol red photons m}^{-2} \text{ s}^{-1}$ (Figure 6C; 153 vs $193 \mu\text{mol CO}_2 \text{ mol}^{-1}$). A mixed-effects model detected a marginal effect of red PPF ($p=0.0525$) but there was no evidence of the effect of subspecies ($p=0.3884$) and its interaction with red PPF (Table S17, $p=0.1979$). Similar to Cleomaceae and *Flaveria*, assimilation rate also responded strongly to red-light PPF (Figure S7 and Table S18).

Altogether, these data established a significant stomatal red light opening response to red-light, independent of C_i in Cleomaceae and most *Flaveria* species, but not in *Alloteropsis*. Although the observed reduced stomatal sensitivity to red light in C_4 *G. gynandra* compared to C_3 *T. hassleriana* is consistent with the hypothesized differences between C_3 and C_4 photosynthetic types, the differences

observed between *Flaveria* species and the lack of these in *Alloteropsis* seem to suggest that these are more likely to be species-specific responses, rather than generic differences between photosynthetic pathways.

Stomatal morphology and density

Stomatal density and size were determined in conjunction with the gas exchange measurements described in the previous sections. In Cleomaceae, the overall stomatal density was significantly higher in C_3 *T. hassleriana* ($590 \text{ stomata mm}^{-2}$) than in C_4 *G. gynandra* ($200 \text{ stomata mm}^{-2}$) ($p<0.0001$). The distribution of stomata on both leaf surfaces was also found to be significantly different, but in a species-dependent manner (Figure 7A, $p<0.0001$). The SD on



the adaxial surface was almost two times higher than the abaxial surface in C_3 *T. hassleriana* (Figures S8A, B). In contrast, in C_4 *G. gynandra*, SD was 25% higher on the adaxial compared to the abaxial surface (Figures S8C, D).

While density varied depending on leaf surface in Cleomaceae, stomatal size was significantly larger on the abaxial than the adaxial surface (Leaf surface, $p < 0.0001$) (Figure S9A). This SS difference was similar in both Cleomaceae species.

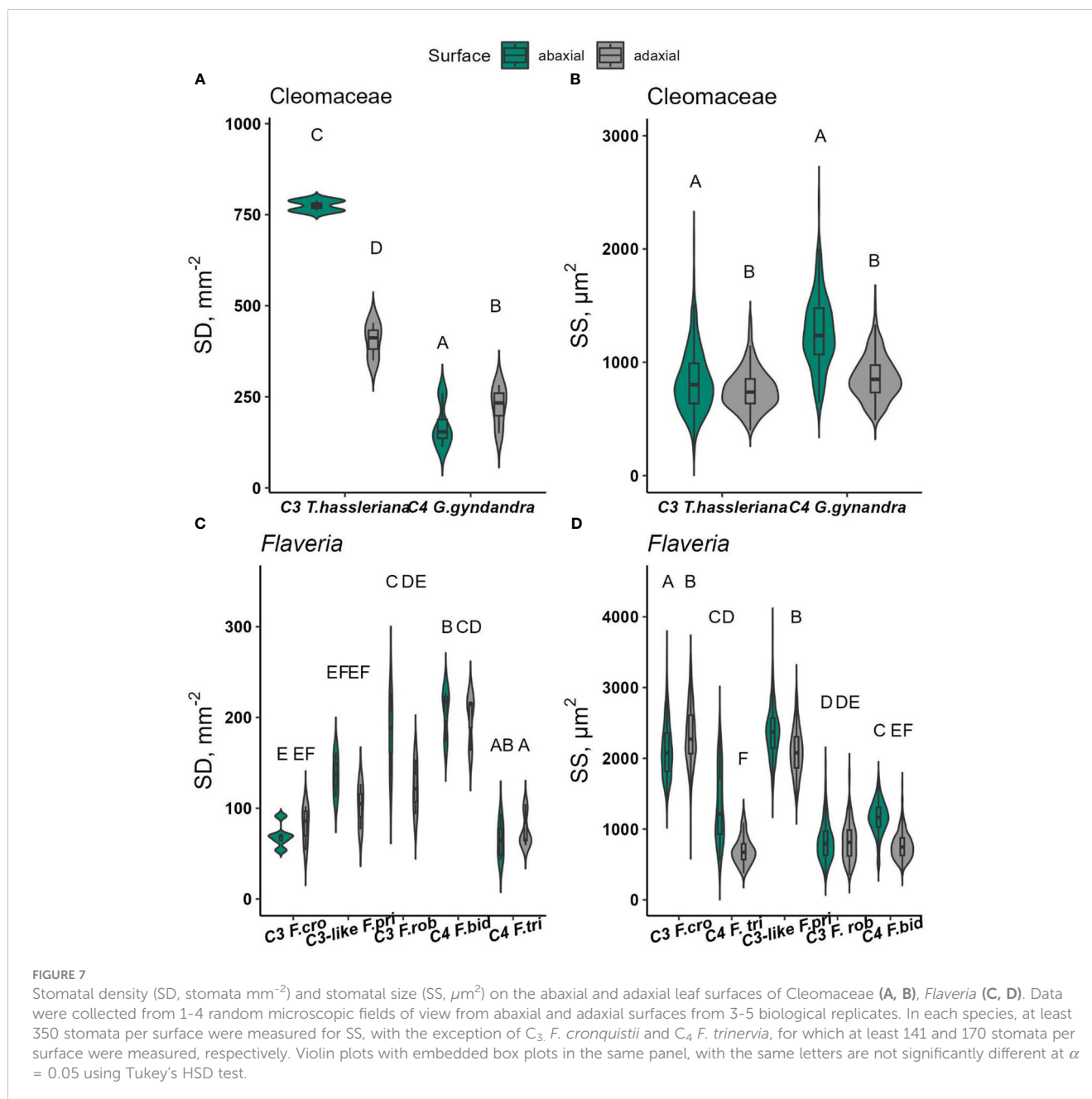
SD among *Flaveria* species (Figures 7C and S9A–J) were significantly different ($p < 0.0001$), but the trend in SD was not consistent with the proposed progression of larger and fewer stomata in C_4 *Flaveria* than in C_3 *Flaveria* (Zhao et al., 2022). Instead, *F. cronquistii*, one of the two C_3 species, had the lowest SD and the highest SD was found for *F. bidentis*, one of the C_4 species. Thus, these differences do appear to be species-dependent, but not determined by photosynthetic pathway. SD was similar between both leaf surfaces in both C_4 *Flaveria* species (Figure S9C) as well as in the C_3 *F. cronquistii*, whereas the abaxial surface had higher SD in the C_3 -like *F. pringlei* and the C_3 *F. robusta* (significant for the latter, $p < 0.05$). SS was higher on the abaxial side for all *Flaveria* species except for C_3 *F. cronquistii* resulting in an interaction effect

of species \times leaf surface which was highly significant ($p < 0.0001$, Figure S7D).

Meanwhile, there was no statistically significant difference in SD detected between the *Alloteropsis* subspecies ($p = 0.338$) (Figures 7 and S10), while SS was larger on the abaxial surface ($p < 0.05$, Figure 7F). Altogether, stomatal density, distribution and anatomical traits appeared to be largely determined by species effect, rather than photosynthetic pathway, although notably, all C_4 species had at least equal SD on the adaxial and abaxial surfaces, whereas the more commonly found bias of SD towards the abaxial surface was only found in some of the C_3 species.

Discussion

Leaf-level g_s responses to red light quantity or red/blue spectral composition were compared between C_3 and C_4 species from Cleomaceae, *Flaveria*, and *Alloteropsis* genera. All three groups are well-studied models in the quest to understand evolution of C_4 photosynthesis. Combining experimental comparisons within all three genera allowed for a global comparison of stomatal light



responses between C_3 and C_4 photosynthetic types while controlling for the effects of phylogenetic distance within each genus.

C_4 species from the genus *Cleomaceae* and *Flaveria* are less sensitive to blue light than the C_3 counterparts

BL promotes diverse physiological plant responses ranging from phototropism, chloroplast photorelocation movement, leaf flattening, leaf positioning, and stomatal opening (Christie, 2007; Inoue et al., 2008; Goh, 2009). Blue-light induced stomatal opening is probably the most well-characterized among these responses.

However, the stomatal opening response to BL is not universal. Studies in model and non-model species provide strong evidence of the species-specificity of the BL stomatal opening response (Violet-Chabrand et al., 2021). Differences in BL-dependent stomatal opening may exist. A recent study reported that C_4 crop species (Zhen and Bugbee, 2020) displayed diminished stomatal opening to BL compared to C_3 crops. Indeed, in this study, C_4 dicots were found to be less sensitive to blue light-induced stomatal opening than close relatives operating the C_3 pathway. This observation demonstrates a clear difference between C_3 and C_4 opening response, as hypothesized. In contrast, both the C_3 and C_4 accessions from the monocot *A. semialata* displayed blue light-dependent stomatal opening, which meant that the C_4

photosynthetic pathway *per se* does not determine this reduced blue light sensitivity.

The decreased sensitivity of C_4 dicots to blue light may be a result of decreased guard cell expression of phototropins, the major blue light photoreceptor in plants. Analysis of transcript abundance in different cell types of C_4 *G. gynandra* showed that the transcript abundance of PHOT1 and PHOT2, as well as another blue light photoreceptor, CRY2, were lower in mesophyll and guard cells of C_4 *G. gynandra*, than in C_3

T. hassleriana Aubry et al. (2016). In *Arabidopsis*, phototropins are expressed in almost every plant part Sakamoto and Briggs (2002), however the strongest expression in the epidermis is detected in guard cells, where photos are associated with the plasma membrane ((Sakamoto and Briggs, 2002)). PHOT1 and 2 have partially overlapping roles. PHOT1 has been suggested to respond to lower PPFD ($0.1\text{--}50 \mu\text{mol m}^{-2} \text{s}^{-1}$), while PHOT2 responds to PPFD up to $250 \mu\text{mol m}^{-2} \text{s}^{-1}$ in *Arabidopsis* [15]. Several hypotheses exist with regards to the function of the stomatal blue light response. One putative role is to stimulate photosynthesis via enhanced stomatal opening in the morning hours when blue light is more prevalent. In the results presented here, PPFD was kept equal during the spectral changes, and CO_2 assimilation rate was invariable, despite significant changes in stomatal conductance in C_3 *T. hassleriana*, C_3 -like *F. pringlei*, C_3 *F. robusta*, C_3 *F. cronquistii* and both *A. semialata* subspecies. These observations do not seem consistent with an important role for blue light induced stomatal opening for photosynthetic carbon gain.

Could there be other benefits to blue sensitivity of stomatal movements? An alternative hypothesis to explain the differential sensitivity to blue light could be related to leaf thermoregulation. Stomatal opening in response to blue light has been suggested to work as a proxy for high-intensity sunlight (Zhao et al., 2022) and function primarily to cool the leaf via transpiration (Taylor et al., 2012). Furthermore, photorespiration increases with temperature in C_3 species but does not change in C_4 species due to CCM (Lawson et al., 2008; Arrivault et al., 2017). Hence, net CO_2 assimilation rate in C_4 species has a higher optimum temperature than in C_3 species (Xu et al., 2016), and a slight elevation of leaf temperature can substantially increase the photosynthesis rate in C_4 , whereas the temperature response between 20°C and 30°C in C_3 species is almost negligible. Based on these differences, the presence of stomatal blue light response may help to cool the leaves of the C_3 dicot species studied here, and thus keep photorespiration lower, while the lack of the stomatal blue light response in the C_4 dicots may help elevate leaf temperature and thereby stimulate CO_2 assimilation rate.

Interestingly, this would also be consistent with the putative involvement of diminished PHOT expression, since PHOTs also perform thermosensory roles Fujii et al. (2017) and promote evapotranspiration and leaf cooling at high temperatures in *Arabidopsis* (Kostaki et al., 2020).

Differences in stomatal red-light response are determined by species, rather than photosynthetic pathway

The mechanism underlying the red-light response remains unresolved. Unlike the blue light response, red light-induced stomatal opening does not seem to involve direct signal transduction from red light photoreceptors in the guard cells but rather relies on the decrease in C_i through the consumption of CO_2 via mesophyll photosynthesis (Mott, 1988; Roelfsema et al., 2002; Lawson et al., 2008). However, g_s was also observed to increase with light despite constant or high C_i or after achieving steady-state photosynthesis (Matrosova et al., 2015), which implies other signals than C_i could also be involved (Lawson et al., 2014; Flu"tsch and Santelia, 2021).

C_4 photosynthesis operates in a two-cell compartment system, such that a strong metabolite gradient is essential to run it efficiently (Leegood and von Caemmerer, 1988; Arrivault et al., 2017). Precise coordination between the C_3 and C_4 cycles is crucial under varying irradiances and C_i to avoid excessive CO_2 leakage from the bundle sheath (Kromdijk et al., 2014). C_3 photosynthesis, on the other hand, is less complex. We therefore hypothesized that species with these contrasting mesophyll photosynthesis characteristics may also be expected to show a different stomatal response to red light.

However, the comparison between the red-light response in C_3 and C_4 dicot species showed that although significant variation in the stomatal red-light response was found between species, no structural differences between C_3 and C_4 species were found across the three phylogenetically controlled comparisons. Instead, a distinct red-light response was found in C_3 *T. hassleriana*, and a weaker, but significant red-light effect was also found across all *Flaveria* species, suggesting that these species support the coordination between stomatal conductance and photosynthesis via stomatal responses to both C_i and red light. In contrast, C_4 *G. gynandra* as well as both *A. semialata* subspecies appear to rely solely on the C_i response.

One aspect of the red-light response debate is whether stomatal guard cells can independently respond to red light. Indeed, a recent metabolomics study reported a direct guard cell response to red light (Zhu et al., 2020). This finding could be consistent with a putative mechanism involving the phosphorylation of the guard cell plasma membrane H^+ ATPase leading to stomatal opening in intact leaves (Ando and Kinoshita, 2018). Consistent with this mechanism, it was demonstrated that H^+ ATPase activation by red light was dependent on fluence rate (Ando and Kinoshita, 2019). If this mechanism can be shown to play a significant role, it may offer an alternative explanation for the observed species differences in the red light response, not necessarily dependent on a mesophyll-derived signal.

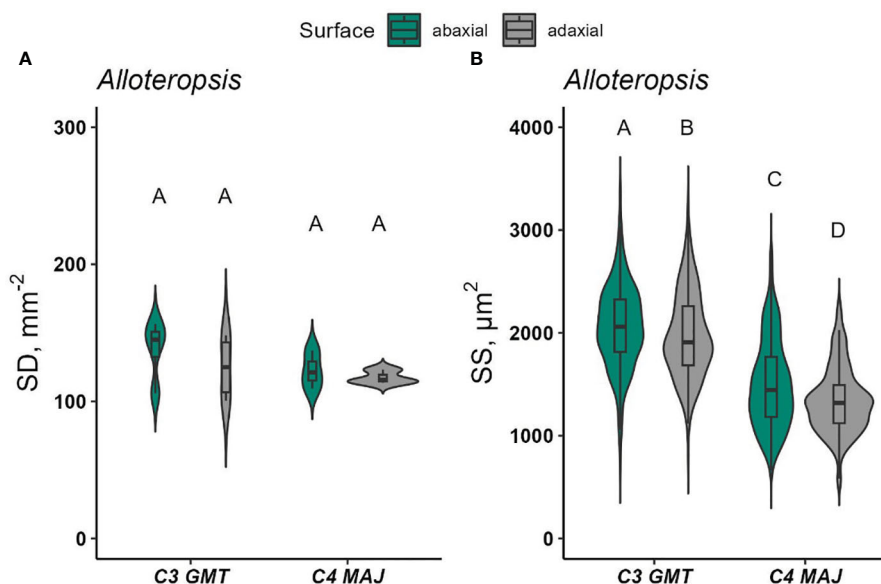


FIGURE 8

Stomatal density (SD, mm^{-2}) and stomatal size (SS, μm^2) on the abaxial and adaxial leaf surfaces of *Alloteropsis* (A, B). Data were collected from 1–4 random microscopic fields of view from abaxial and adaxial surfaces from 3–5 biological replicates. In each species, at least 350 stomata per surface were measured for SS. Violin plots with embedded box plots in the same panel, with the same letters are not significantly different at $\alpha = 0.05$ using Tukey's HSD test.

Role of stomatal morphology and density on stomatal movements in response to light

Stomatal density and morphology are well-known to impact responses to light (Harrison et al., 2020). These traits varied significantly between species studied here (Figures 7, 8). For most dicots, such as Cleomaceae and *Flaveria*, stomata are defined by a pair of kidney-shaped guard cells (Figures S8 and S9). In contrast, stomata in the monocot *A. semialata* subspecies are dumbbell-shaped with additional subsidiary cells flanking the guard cells (Figure S10). The morphology and size of stomata in the grasses are often suggested to facilitate more rapid responses to short-term environmental perturbations (Chen et al., 2017), such as fluctuating light or acute changes to temperature or VPD (Bauer et al., 2013). However, there was no evidence in this study linking stomatal morphology nor size to blue light-induced opening or quantitative red-light responses.

Within the dicots, C_3 *T. hassleriana* (Cleomaceae) had denser and smaller stomata than the C_4 species *G. gynandra*, which was consistent with earlier observations Aubry et al. (2016). The higher SD on the adaxial surface could be responsible for the pronounced red-light response, independent of C_i in C_3 *T. hassleriana*. However, measurements on intact leaves do not make it possible to derive whether these responses rely on signal perception in the guard cell, or in the underlying mesophyll.

Furthermore, in *Flaveria*, SD and SS varied between species. Unlike in the Cleomaceae species, SD or SS had no evident relationship to the red-light response in *Flaveria*. Additionally, the observed between-species variability in SD and SS in *Flaveria* was inconsistent with the proposed trajectory of stomatal density

and guard cell length (and therefore, size) changes during C_4 evolution, where C_3 *Flaveria* species tended to have smaller but more stomata, while C_4 *Flaveria* show increased stomatal size and decreased density (Zhao et al., 2022). In fact, C_3 -like *F. pringlei* and C_3 *F. cronquistii*, were found to have larger stomata (Figure 7D), whereas both C_4 *Flaveria* had smaller stomatal sizes. The discrepancy between this study and Zhao et al. (2022) might have stemmed from very low sample sizes used by the latter. Stomatal parameters in Zhao et al. (2022) were measured from a minimum of 5 individual stoma, to at most 10 stomata per species, which, as shown in Figure 7D, is insufficient to capture size differences among *Flaveria* species.

Another possible reason for these discrepancies is the potential impact of ecological adaptation in some of the *Flaveria* species. C_3 *F. cronquistii* had equal stomatal distribution on both leaf surfaces like the C_4 *Flaveria* species, but with twice larger stomatal size on either leaf surface. In terms of leaf shape, C_3 *F. cronquistii* has linear, elongated leaves, whereas the other *Flaveria* representatives display elliptic or ovate leaf shapes. At an ecological standpoint, narrower leaves such as those in C_3 *F. cronquistii* perhaps reflect an adaptation in minimizing excessive heat load (Leigh et al., 2017) whilst maximizing net carbon gain (Michaletz et al., 2016) and together with a uniform stomatal distribution and a larger proportion of large stomata allow it to sustain higher g_s rates to effect cooling.

Conclusion

Here we used three phylogenetically-controlled comparisons to assess differences between stomatal anatomy and stomatal

responses to red and blue light. The C_4 species from the genus *Cleomaceae* and *Flaveria* in this study did not have a detectable blue light stomatal response, unlike their C_3 counterparts. However, perhaps surprisingly, the results demonstrate that the impact of photosynthetic pathway and stomatal morphology and distribution were not as strong as initially hypothesized, but instead varied between genera. Similarly, the quantitative red-light response showed significant species variation but no association with photosynthetic pathway. Altogether, the findings suggest that the evolution of C_4 photosynthesis in the dicots may have led to a change in light-regulated stomatal movements, challenge the general nature of previously observed stomatal morphological differences between C_3 and C_4 species (Zhao et al., 2022) and demonstrate the importance of controlling for evolutionary distance.

Data availability statement

The original contributions presented in the study are included in the article/Supplementary Material. Further inquiries can be directed to the corresponding author.

Author contributions

EB: Writing – original draft; Experimentation and analysis. CS: Writing – review & editing. LC: Writing – review & editing. RV: Writing – review & editing. JK: Conceptualization, Writing – review & editing.

Funding

EB was funded by the Department of Science and Technology - Science Education Institute (DOST-SEI) under their Foreign Graduate Scholarships in Specialized and Priority Fields in

References

- Ando, E., and Kinoshita, T. (2018). Red light-induced phosphorylation of plasma membrane H^+ -atpase in stomatal guard cells. *Plant Physiol.* 178, 838–849. doi: 10.1104/pp.18.00544
- Ando, E., and Kinoshita, T. (2019). Fluence rate dependence of red light-induced phosphorylation of plasma membrane H^+ -atpase in stomatal guard cells. *Plant Signaling Behav.* 14, 1561107. doi: 10.1080/15592324.2018.1561107
- Arrivault, S., Obata, T., Szeco'wka, M., Mengin, V., Guenther, M., Hoehne, M., et al. (2017). Metabolite pools and carbon flow during C_4 photosynthesis in maize: $^{13}C_2$ labeling kinetics and cell type fractionation. *J. Exp. Bot.* 68, 283–298. doi: 10.1093/jxb/erw414
- Aubry, S., Aresheva, O., Reyna-Llorens, I., Smith-Unna, R. D., Hibberd, J. M., and Genty, B. (2016). A specific transcriptome signature for guard cells from the C_4 plant *Gynandropsis gynandra*. *Plant Physiol.* 170, 1345–1357. doi: 10.1104/pp.15.01203
- Bauer, H., Ache, P., Wohlfart, F., Al-Rasheid, K. A., Sonnewald, S., Sonnewald, U., et al. (2013). How do stomata sense reductions in atmospheric relative humidity? *Mol. Plant* 6, 1703–1706. doi: 10.1093/mp/sst055
- Bertolino, L. T., Caine, R. S., and Gray, J. E. (2019). Impact of stomatal density and morphology on water-use efficiency in a changing world. *Front. Plant Sci.* 10, 225. doi: 10.3389/fpls.2019.00225
- Bowyer, J., and Leegood, R. (1997). “ C_2 - photosynthesis,” in *Plant Biochemistry*. Eds. P. Dey and J. Harborne (London: Academic Press), 49–p4. doi: 10.1016/B978-012214674-9/50003-5
- Chen, Z.-H., Chen, G., Dai, F., Wang, Y., Hills, A., Ruan, Y.-L., et al. (2017). Molecular evolution of grass stomata. *Trends Plant Sci.* 22, 124–139. doi: 10.1016/j.tplants.2016.09.005
- Christie, J. M. (2007). Phototropin blue-light receptors. *Annu. Rev. Plant Biol.* 58, 21–45. doi: 10.1146/annurev.arplant.58.032806.103951
- Flu'tsch, S., and Santelia, D. (2021). Mesophyll-derived sugars are positive regulators of light-driven stomatal opening. *New Phytol.* 230, 1754–1760. doi: 10.1111/nph.17322
- Fujii, Y., Tanaka, H., Konno, N., Ogasawara, Y., Hamashima, N., Tamura, S., et al. (2017). Phototropin perceives temperature based on the lifetime of its photoactivated state. *Proc. Natl. Acad. Sci.* 114, 9206–9211. doi: 10.1073/pnas.1704462114
- Goh, C.-H. (2009). Phototropins and chloroplast activity in plant blue light signaling. *Plant Signaling Behav.* 4, 693–695. doi: 10.4161/psb.4.8.8981
- Harrison, E. L., Arce Cubas, L., Gray, J. E., and Hepworth, C. (2020). The influence of stomatal morphology and distribution on photosynthetic gas exchange. *Plant J.* 101, 768–779. doi: 10.1111/tpj.14560

Science and Technology. EB also acknowledges further financial support from the University of the Philippines Los Baños, the Department of Plant Sciences, University of Cambridge, Emmanuel College, and the University of Cambridge.

Acknowledgments

EB is grateful to the Institute of Crop Science, College of Agriculture and Food Science, University of the Philippines Los Baños for supporting his PhD endeavor. For the purpose of open access, the author has applied a Creative Commons Attribution (CC BY) license to any Author Accepted Manuscript version arising from this submission.

Conflict of interest

The authors declare that the research was conducted in the absence of any commercial or financial relationships that could be construed as a potential conflict of interest.

Publisher's note

All claims expressed in this article are solely those of the authors and do not necessarily represent those of their affiliated organizations, or those of the publisher, the editors and the reviewers. Any product that may be evaluated in this article, or claim that may be made by its manufacturer, is not guaranteed or endorsed by the publisher.

Supplementary material

The Supplementary Material for this article can be found online at: <https://www.frontiersin.org/articles/10.3389/fpls.2023.1253976/full#supplementary-material>

- Huxman, T. E., and Monson, R. (2003). Stomatal responses of C₃, C₃-C₄ and C₄ *Flaveria* species to light and intercellular CO₂ concentration: implications for the evolution of stomatal behaviour. *Plant Cell Environ.* 26, 313–322. doi: 10.1046/j.1365-3040.2003.00964.x
- Inoue, S.-i., Kinoshita, T., Matsumoto, M., Nakayama, K. I., Doi, M., and Shimazaki, K.-I. (2008). Blue light-induced autophosphorylation of phototropin is a primary step for signaling. *Proc. Natl. Acad. Sci.* 105, 5626–5631. doi: 10.1073/pnas.0709189105
- Kostaki, K.-I., Coupel-Ledru, A., Bonnell, V. C., Gustavsson, M., Sun, P., McLaughlin, F. J., et al. (2020). Guard cells integrate light and temperature signals to control stomatal aperture. *Plant Physiol.* 182, 1404–1419. doi: 10.1104/pp.19.01528
- Kromdijk, J., Ubierna, N., Cousins, A. B., and Griffiths, H. (2014). Bundle-sheath leakiness in C₄ photosynthesis: a careful balancing act between CO₂ concentration and assimilation. *J. Exp. Bot.* 65, 3443–3457. doi: 10.1093/jxb/eru157
- H. Lambers and R. Oliveira (Eds.) (2019). *Plant Physiological Ecology* (Switzerland: Springer Nature). doi: 10.1007/978-3-030-29639-1
- Lawson, T., Lefebvre, S., Baker, N. R., Morison, J. I., and Raines, C. A. (2008). Reductions in mesophyll and guard cell photosynthesis impact on the control of stomatal responses to light and CO₂. *J. Exp. Bot.* 59, 3609–3619. doi: 10.1093/jxb/ern211
- Lawson, T., Simkin, A. J., Kelly, G., and Granot, D. (2014). Mesophyll photosynthesis and guard cell metabolism impacts on stomatal behaviour. *New Phytol.* 203, 1064–1081. doi: 10.1111/nph.12945
- Leegood, R. C., and von Caemmerer, S. (1988). The relationship between contents of photosynthetic metabolites and the rate of photosynthetic carbon assimilation in leaves of *Amaranthus edulis* L. *Planta* 174, 253–262. doi: 10.1007/BF00394779
- Leigh, A., Sevanto, S., Close, J., and Nicotra, A. (2017). The influence of leaf size and shape on leaf thermal dynamics: does theory hold up under natural conditions? *Plant Cell Environ.* 40, 237–248. doi: 10.1111/pce.12857
- Matrosova, A., Bogireddi, H., Mateo-Pen˜as, A., Hashimoto-Sugimoto, M., Iba, K., Schroeder, J. I., et al. (2015). The ht1 protein kinase is essential for red light-induced stomatal opening and genetically interacts with ost1 in red light and CO₂-induced stomatal movement responses. *New Phytol.* 208, 1126–1137. doi: 10.1111/nph.13566
- Messinger, S. M., Buckley, T. N., and Mott, K. A. (2006). Evidence for involvement of photosynthetic processes in the stomatal response to CO₂. *Plant Physiol.* 140, 771–778. doi: 10.1104/pp.105.073676
- Michaletz, S. T., Weiser, M. D., McDowell, N. G., Zhou, J., Kaspari, M., Helliker, B. R., et al. (2016). The energetic and carbon economic origins of leaf thermoregulation. *Nat. Plants* 2, 1–9. doi: 10.1038/nplants.2016.129
- Monson, R. K. (1996). The use of phylogenetic perspective in comparative plant physiology and development biology. *Ann. Missouri Botanical Garden* 86, 3–16. doi: 10.2307/2399963
- Mott, K. A. (1988). Do stomata respond to CO₂ concentrations other than intercellular? *Plant Physiol.* 86, 200–203. doi: 10.1104/pp.86.1.200
- Mott, K. A. (2009). Opinion: stomatal responses to light and CO₂ depend on the mesophyll. *Plant Cell Environ.* 32, 1479–1486. doi: 10.1111/j.1365-3040.2009.02022.x
- Posit Team (2023). *RStudio: Integrated Development Environment for R* (Boston, MA: Posit Software, PBC). Available at: <http://www.posit.co/>.
- R Core Team (2023). *R: A language and environment for statistical computing* (Vienna, Austria: R Foundation for Statistical Computing). Available at: <https://www.R-project.org/>.
- Roelfsema, M. R. G., Hanstein, S., Felle, H. H., and Hedrich, R. (2002). CO₂ provides an intermediate link in the red light response of guard cells. *Plant J.* 32, 65–75. doi: 10.1046/j.1365-313X.2002.01403.x
- Sage, R. F. (2004). The evolution of C₄ photosynthesis. *New Phytol.* 161, 341–370. doi: 10.1111/j.1469-8137.2004.00974.x
- Sage, R. F. (2016). Tracking the evolutionary rise of C₄ metabolism. *J. Exp. Bot.* 67, 2919–2922. doi: 10.1093/jxb/erw137
- Sakamoto, K., and Briggs, W. R. (2002). Cellular and subcellular localization of phototropin 1. *Plant Cell* 14, 1723–1735. doi: 10.1105/tpc.003293
- Schindelin, J., Arganda-Carreras, I., Frise, E., Kaynig, V., Longair, M., Pietzsch, T., et al. (2012). Fiji: an open-source platform for biological-image analysis. *Nat. Methods* 9, 676–682. doi: 10.1038/nmeth.2019
- Shimazaki, K.-i., Doi, M., Assmann, S. M., and Kinoshita, T. (2007). Light regulation of stomatal movement. *Annu. Rev. Plant Biol.* 58, 219–247. doi: 10.1146/annurev.arplant.57.032905.105434
- Suetsugu, N., Takami, T., Ebisu, Y., Watanabe, H., Iiboshi, C., Doi, M., et al. (2014). Guard cell chloroplasts are essential for blue light-dependent stomatal opening in *Arabidopsis*. *PLoS One* 9, e108374. doi: 10.1371/journal.pone.0108374
- Takemiya, A., Sugiyama, N., Fujimoto, H., Tsutsumi, T., Yamauchi, S., Hiyama, A., et al. (2013). Phosphorylation of blus1 kinase by phototropins is a primary step in stomatal opening. *Nat. Commun.* 4, 1–8. doi: 10.1038/ncomms3094
- Taylor, S., Franks, P., Hulme, S., Spriggs, E., Christin, P., Edwards, E., et al. (2012). Photosynthetic pathway and ecological adaptation explain stomatal trait diversity amongst grasses. *New Phytol.* 193, 387–396. doi: 10.1111/j.1469-8137.2011.03935.x
- Taylor, S. H., Hulme, S. P., Rees, M., Ripley, B. S., Ian Woodward, F., and Osborne, C. P. (2010). Ecophysiological traits in c3 and c4 grasses: a phylogenetically controlled screening experiment. *New Phytol.* 185, 780–791. doi: 10.1111/j.1469-8137.2009.03102.x
- Violet-Chabrand, S., Matthews, J. S., and Lawson, T. (2021). Light, power, action! interaction of respiratory energy and blue light-induced stomatal movements. *New Phytol.* 231, 2231–2246. doi: 10.1111/nph.17538
- Wickham, H. (2016). *enGgplot2: Elegant graphics for data analysis. Use R! 2 edn* (Cham, Switzerland: Springer International Publishing).
- Wickham, H. (2016). *ggplot2: Elegant Graphics for Data Analysis*. (Verlag New York: Springer). Available at: <https://ggplot2.tidyverse.org>.
- Xu, Z., Jiang, Y., Jia, B., and Zhou, G. (2016). Elevated-CO₂ response of stomata and its dependence on environmental factors. *Front. Plant Sci.* 7, 657. doi: 10.3389/fpls.2016.00657
- Zhao, Y.-Y., Lyu, M. A., Miao, F., Chen, G., and Zhu, X.-G. (2022). The evolution of stomatal traits along the trajectory toward C₄ photosynthesis. *Plant Physiol.* 190, 441–458. doi: 10.1093/plphys/kiac252
- Zhen, S., and Bugbee, B. (2020). Steady-state stomatal responses of C₃ and C₄ species to blue light fraction: Interactions with CO₂ concentration. *Plant Cell Environ.* 43, 3020–3032. doi: 10.1111/pce.13888
- Zhu, M., Geng, S., Chakravorty, D., Guan, Q., Chen, S., and Assmann, S. M. (2020). Metabolomics of red-light-induced stomatal opening in *Arabidopsis thaliana*: Coupling with abscisic acid and jasmonic acid metabolism. *Plant J.* 101, 1331–1348. doi: 10.1111/tj.14594