



## OPEN ACCESS

## EDITED BY

Katharina Pawlowski,  
Stockholm University, Sweden

## REVIEWED BY

Alejandra Miranda Carrazco,  
Autonomous Metropolitan University,  
Mexico  
Fengzhi Wu,  
Northeast Agricultural University, China  
Silvia Maribel Contreras Ramos,  
CONACYT Centro de Investigación y  
Asistencia en Tecnología y Diseño del  
Estado de Jalisco (CIATEJ), Mexico

## \*CORRESPONDENCE

Xian Yang

✉ yangx376@mail.sysu.edu.cn

Huaihai Chen

✉ chenhh68@mail.sysu.edu.cn

†These authors have contributed equally to  
this work

RECEIVED 04 July 2023

ACCEPTED 26 October 2023

PUBLISHED 10 November 2023

## CITATION

Fu X, Huang Y, Fu Q, Qiu Y, Zhao J, Li J,  
Wu X, Yang Y, Liu H, Yang X and Chen H  
(2023) Critical transition of soil microbial  
diversity and composition triggered by  
plant rhizosphere effects.  
*Front. Plant Sci.* 14:1252821.  
doi: 10.3389/fpls.2023.1252821

## COPYRIGHT

© 2023 Fu, Huang, Fu, Qiu, Zhao, Li, Wu,  
Yang, Liu, Yang and Chen. This is an open-  
access article distributed under the terms of  
the [Creative Commons Attribution License  
\(CC BY\)](https://creativecommons.org/licenses/by/4.0/). The use, distribution or  
reproduction in other forums is permitted,  
provided the original author(s) and the  
copyright owner(s) are credited and that  
the original publication in this journal is  
cited, in accordance with accepted  
academic practice. No use, distribution or  
reproduction is permitted which does not  
comply with these terms.

# Critical transition of soil microbial diversity and composition triggered by plant rhizosphere effects

Xianheng Fu<sup>†</sup>, Yu Huang<sup>†</sup>, Qi Fu, Yingbo Qiu, Jiayi Zhao,  
Jiaxin Li, Xicun Wu, Yihang Yang, Hongen Liu, Xian Yang\*  
and Huaihai Chen\*

State Key Laboratory of Biocontrol, School of Ecology, Sun Yat-sen University, Shenzhen,  
Guangdong, China

Over the years, microbial community composition in the rhizosphere has been extensively studied as the most fascinating topic in microbial ecology. In general, plants affect soil microbiota through rhizodeposits and changes in abiotic conditions. However, a consensus on the response of microbiota traits to the rhizosphere and bulk soils in various ecosystems worldwide regarding community diversity and structure has not been reached yet. Here, we conducted a meta-analysis of 101 studies to investigate the microbial community changes between the rhizosphere and bulk soils across various plant species (maize, rice, vegetables, other crops, herbaceous, and woody plants). Our results showed that across all plant species, plant rhizosphere effects tended to reduce the rhizosphere soil pH, especially in neutral or slightly alkaline soils. Beta-diversity of bacterial community was significantly separated between into rhizosphere and bulk soils. Moreover, r-strategists and copiotrophs (e.g. Proteobacteria and Bacteroidetes) enriched by 24–27% in the rhizosphere across all plant species, while K-strategists and oligotrophic (e.g. Acidobacteria, Gemmatimonadete, Nitrospirae, and Planctomycetes) decreased by 15–42% in the rhizosphere. Actinobacteria, Firmicutes, and Chloroflexi are also depleted by in the plant rhizosphere compared with the bulk soil by 7–14%. The Actinobacteria exhibited consistently negative effect sizes across all plant species, except for maize and vegetables. In Firmicutes, both herbaceous and woody plants showed negative responses to rhizosphere effects, but those in maize and rice were contrarily enriched in the rhizosphere. With regards to Chloroflexi, apart from herbaceous plants showing a positive effect size, the plant rhizosphere effects were consistently negative across all other plant types. Verrucomicrobia exhibited a significantly positive effect size in maize, whereas herbaceous plants displayed a negative effect size in the rhizosphere. Overall, our

meta-analysis exhibited significant changes in microbial community structure and diversity responding to the plant rhizosphere effects depending on plant species, further suggesting the importance of plant rhizosphere to environmental changes influencing plants and subsequently their controls over the rhizosphere microbiota related to nutrient cycling and soil health.

#### KEYWORDS

rhizosphere, meta-analysis, r-strategists, K-strategists, microbiome

## 1 Introduction

The rhizosphere is the soil volume around the root with a rich diversity of microorganisms, which is strongly affected by root functioning (Philippot et al., 2013; Kuzyakov and Razavi, 2019; Qu et al., 2020). The individual and interconnected processes occurring in the rhizosphere have been extensively characterized, encompassing exudate release, nutrient acquisition, and water uptakes (Philippot et al., 2013; Sasse et al., 2018; Kuzyakov and Razavi, 2019). These processes have contributed to the development of a distinct microbial community structure in the rhizosphere compared to the bulk soil, commonly referred to as the rhizosphere effect (Aira et al., 2010; Fan et al., 2017; Sasse et al., 2018; Ling et al., 2022). The rhizosphere microbiome can exert significant influences on plant health, nutrition, and growth (Berendsen et al., 2012; Philippot et al., 2013; Finkel et al., 2017). Plants benefit from rhizosphere microorganisms to help acquire nutrients and suppress pathogenic invasions (Bulgarelli et al., 2013; Poole, 2017; Ling et al., 2022). For example, plant growth-promoting rhizobacteria (PGPR) promotes plant growth through a wide range of mechanisms, which is beneficial for the sustainability of agriculture as the biofertilizers and biopesticides (Pii et al., 2015). Similarly, legumes require rhizobia and mycorrhizal fungi to improve plant productivity and N<sub>2</sub> fixation (van der Heijden et al., 2008; Kaschuk et al., 2010).

Although genotypes, root architecture, and growth stages tend to affect the plant recruits relatively distinct rhizobacterial communities (Aira et al., 2010; Li et al., 2014), plant itself exerts a highly selective effect to shape the microbial community composition in the rhizosphere, so the community composition can be greatly similar across different environments (Marschner et al., 2004; Costa et al., 2006; Berg and Smalla, 2009; Ling et al., 2022). In addition, soils covered with vegetation, as one of the sources of atmospheric CO<sub>2</sub>, may strongly contribute to the CO<sub>2</sub> efflux by root and rhizomicrobial respiration (Kuzyakov, 2006; Werth and Kuzyakov, 2008; Trivedi et al., 2013). The distinct rhizomicrobial respiration processes (microbial respiration or respiration by heterotrophs), regulating soil organic matter (SOM) decomposition, was identified as one of the important fine-scale components of the global carbon (C) cycle (Cheng, 1999; Kuzyakov, 2006; Huo et al., 2017; Jackson et al., 2019). The microbial community control over C cycling in the rhizosphere has

been extensively studied (Kuzyakov, 2002; Schimel and Schaeffer, 2012; Schindlbacher et al., 2015; Kumar et al., 2016; Hunninghaus et al., 2019; Semenov et al., 2019). Notably, some microbiota exhibited strong resistance to perturbations, while other specific microorganisms respond rapidly to changing environmental conditions (Jiang et al., 2017). This caused a weak but measurable effect on the rhizosphere microbial community even within a single plant species (Bokulich et al., 2014). Therefore, comprehending the taxonomic profiles of microbial communities in the rhizosphere and bulk soil is critical to understand the microbial functions to support plant growth and manage C cycling in the rhizosphere. However, the information in the rhizosphere and bulk soils with respect to the taxonomic profiles of microbial communities remains largely unexplored.

Both plant species and soil properties affect the diversity and structure of rhizosphere microbial community (Garbeva et al., 2008; Jiang et al., 2017; Vorholt et al., 2017). The impact of soil characteristics on rhizosphere microbial community is as significant as that of the plant itself (Marschner et al., 2004; Fan et al., 2018). In general, plant root systems alter the rhizosphere pH by releasing H<sup>+</sup> or OH<sup>-</sup>, and affecting the equilibrium between cations and anions at the root-soil interface (Hinsinger et al., 2003; Kuzyakov and Razavi, 2019). The pH of the soil is a key factor in determining changes in the structure and diversity of the microbial community (Tripathi et al., 2018; Kuzyakov and Razavi, 2019; Lopes et al., 2021). As previous studies reported that soil pH was the best predictor of soil microbial community diversity (Fierer and Jackson, 2006). Therefore, investigating rhizosphere microbiomes is critical for establishing a more complete knowledge of the role of soil pH on microbial ecology. However, information is lacking on the association of rhizosphere soil pH with the plant species.

Recently, sequencing and phylogenetic analysis of cultivation-independent 16S rRNA genes provided the foundation for modern studies of microorganisms living in the soil (Lundberg et al., 2012; Fan et al., 2017; Fan et al., 2018; Ling et al., 2022). High-throughput sequencing enables quantitative insights into microbial community diversity and structure in high resolution (Singer et al., 2016). Compared to traditional microbial community analyses, high-throughput sequencing is known for its labor efficiency and cost-effectiveness (Reuter et al., 2015). Most studies must be deposited the raw data in a public gene bank, causing a huge and extensive rhizosphere sequencing data set, which has cracked the way to

further research into the broad principles of rhizosphere microbiome selection from bulk soils (Ling et al., 2022). Thus, it was urgently needed for a comprehensive study synthesizing previous findings to infer the difference in the microbial community structure between rhizosphere and bulk soils to a wide range of plants and environmental conditions.

Here, we conducted a global meta-analysis of microbial communities in the rhizosphere and bulk soil, with a specific focus on bacteria and fungi due to their high prevalence and the extensive attention they have received in comparison to other members of the community (e.g., archaea, protists, and nematodes, etc.) (Ling et al., 2022). The 16S and ITS rRNA amplicon-based sequencing data were collected from published articles to date. Specifically, our objective was to answer the following questions: (i) how plant rhizosphere affects soil pH and microbial diversity and composition, (ii) to what extent major microbial taxa respond to plant rhizosphere effects, (iii) whether the plant rhizosphere effects on microbial community were dependent on plant species?

## 2 Materials and methods

### 2.1 Data collection

An extensive literature search was conducted using the Web of Science database (<http://apps.webofknowledge.com/>). The data was collected from peer-reviewed publications from 2014 to 2021 for our

literature survey and review. We search for terms including “rhizosphere”, “bulk”, “fungi”, “bacteria”, “microbial community”, “DNA extraction”, “PCR Amplification”, “16s”, “ITS”, “high-throughput”, “pyrosequencing”, and “Illumina”, etc. in the title, keyword, or abstract. We obtained a total of 861 data points based on 101 publications around the world (Figure 1). Detailed information was given in Table S1. The data from manipulation experiments conducted in laboratory settings were excluded. We exclusively employed 16S and ITS data, as detailed in Table S1, for the purpose of this study. We examined the microbial community structure of bacteria and fungi by analyzing their relative abundance at the phylum level. The phylum level is often employed in rhizosphere and bulk soil research, and findings for the majority of microbial community analyses are commonly based on high-throughput sequencing technique.

The means (M), standard deviations (SD), and sample sizes (n) were obtained from both rhizosphere and bulk soils in each study. If only the standard error (SE) was provided, SD was calculated as SE multiplied by the square root of sample size. Missing standard deviations were estimated using the average coefficient of variation of datasets with known SDs (Chen et al., 2019). Data in tables were directly transferred to our dataset, while data in figures were extracted using Data Thief software, which is specifically designed for retrieving axis-related information from images (B. Tummers, DataThief III. 2006 <https://datathief.org/>). To ensure the accuracy and quality of the extracted data, only taxa with an average relative abundance > 2% were included. Taxa that were absent in any treatment or replicate of a study were excluded from the data extraction process (Dai et al., 2018).

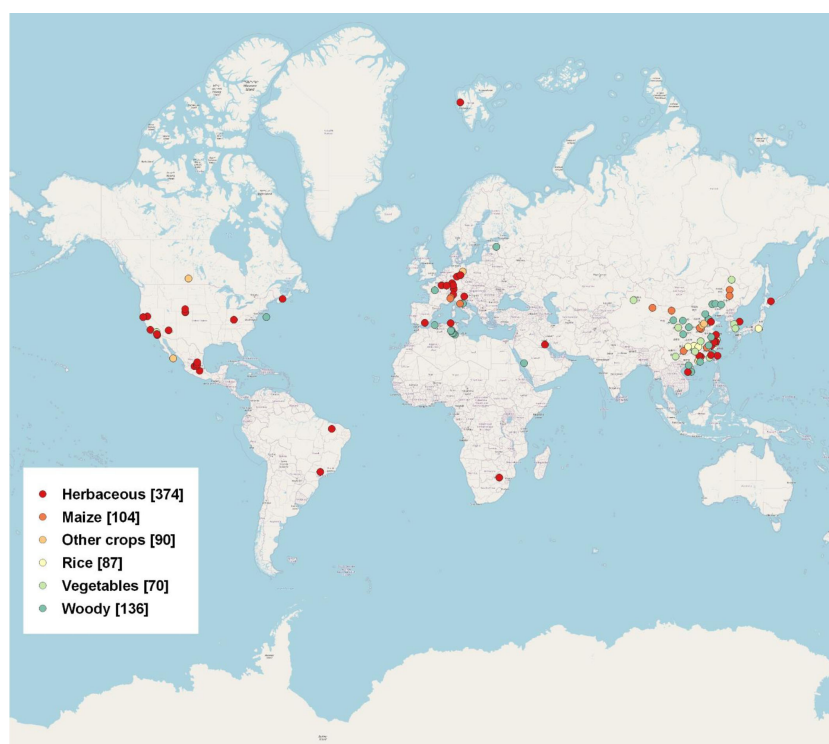


FIGURE 1

Global distribution of rhizosphere and bulk data used in this meta-analysis, including 861 data points from 101 publications. Six groups of plant species are shown in the legends, with sample sizes for each group given in parentheses.

## 2.2 Meta-analysis

The 16S and ITS data collected in this study were utilized for meta-analysis. The impacts of plant roots on soil microbial compositions were evaluated using the rhizosphere soil against the pairwise bulk soil (Chen et al., 2022). The natural log-transformed response ratio was previously described (Gurevitch et al., 2018):

$$\ln R = \ln(X_r) - \ln(X_c) \quad (1)$$

Where  $\ln R$  denotes the natural log of response ratio and is defined as the effect size,  $X_r$  and  $X_c$  are the mean value of the rhizosphere and bulk soil, respectively, which are directly extracted from data of publications included in this meta-analysis. The  $\ln R$  was further weighted by the pooled variance ( $v$ ):

$$v = \frac{SD_r^2}{n_r X_r^2} + \frac{SD_c^2}{n_c X_c^2} \quad (2)$$

where  $SD_r$  and  $SD_c$  are the SD of rhizosphere and bulk soil, respectively,  $n_r$  and  $n_c$  are the sample size of the rhizosphere and bulk soil, respectively, which are directly extracted from data of publications included in this meta-analysis. The results obtained from both meta-analysis approaches were identical. We only reported the grand means and bias-corrected 95% CIs of effect sizes calculated by MetaWin because the 95% CIs from this approach enable us to assess the potential publication bias.

The total heterogeneity ( $Q_T$ ) of the dataset (i.e. microbial structure and soil pH) was divided into within-group ( $Q_W$ ) and between-group ( $Q_b$ ) variations. The  $Q$  statistic has  $k-1$  degrees of freedom and follows a Chi-square distribution, where  $k$  is the number of matched observations between rhizosphere and bulk soils. When the bias-corrected 95% CIs did not overlap zero, the effect size was considered substantially positive or negative at the = 0.05 level (Gurevitch et al., 2018). The  $\ln R$  (effect size) was transformed and revealed as the percentage variation under rhizosphere relative to bulk soil:

$$(R - 1) \times 100\% \quad (3)$$

where  $R$  denotes the response ratio. In our meta-analysis, the soil pH of rhizosphere was divided into five groups as follows: 5 ( $\text{pH} < 5$ ), 6 ( $5 \leq \text{pH} < 6$ ), 7 ( $6 \leq \text{pH} < 7$ ), 8 ( $7 \leq \text{pH} < 8$ ), and 9 ( $8 \leq \text{pH} < 9$ ). The groups of soil pH were used to examine if there were any significant differences in effect size among the groups. The plant species were divided into maize, rice, vegetables, other crops, herbaceous, and woody plants. The means of effect size between the groups of soil pH or plant species were considered to be significant at  $\alpha = 0.05$  when bias-corrected 95% CIs were non-overlapping.

## 2.3 Statistics

Based on the relative abundance of major fungal and bacterial phylum, we calculated Bray-Curtis dissimilarity for principal coordinate analysis (PCoA). PCoA was performed to visualize the

microbial community structure of rhizosphere and bulk soil. Bray-Curtis similarity was calculated to construct triangular pairwise Bray-Curtis similarity matrix using PRIMER 7 (Plymouth Routines in Multivariate Ecological Research Statistical Software, v7.0.13, PRIMER-E Ltd, UK). ANOSIM and ADONIS tests were used to test the cluster significance of samples from the Bray-Curtis similarity distances, which were calculated based on the relative abundance of the major microbial groups. Taxonomic classification was performed using the Silva 16S rRNA and the UNITE fungal ITS reference database in all publications which we obtained. Most statistical analyses were performed in R (v4.0.1; <http://www.r-project.org/>).

## 3 Results

### 3.1 Soil pH in the rhizosphere and the bulk soil

Across all studies, the means of effect size of soil pH was -2%, indicating a significantly ( $P < 0.05$ ) negative effect in rhizosphere than bulk soils on soil pH (Figure 2). In particular, when soil pH  $> 7$ , effect sizes of soil pH were significantly ( $P < 0.05$ ) lower than zero, showing that rhizosphere effects on soil pH were most in neutral or slightly alkaline soils. However, with a decline of soil pH, the effect sizes of rhizosphere also increased and became positive (+3%) under soil pH = 5, suggesting that bulk soil pH condition was the main factor for the rhizosphere effects on soil pH. Similarly, the effect size of rhizosphere on soil pH was also dependent on plant species, in which the effect sizes in rice (-1%) and vegetables (-4%) were significantly ( $P < 0.05$ ) lower than zero, while herbaceous and woody has non-significant effect sizes and maize even had a positive effects size (+2%).

### 3.2 The composition and diversity of soil microbial community

Although the means of effect size of bacterial richness were not significantly different from zero, the effect size of bacterial richness in vegetables was significantly ( $P < 0.05$ ) negative (-29%) (Figure 3). However, across all plant species, the means of effect size of bacterial Shannon index were significantly ( $P < 0.05$ ) negative (-4%). Specifically, the effect sizes of bacterial Shannon index in plant types of maize, rice, vegetables, herbaceous and other crops were significantly ( $P < 0.05$ ) lower than zero (-9% to -2%) while those in wood plants were non-significant.

Across all studies, the bacterial communities mainly consist of Proteobacteria (39%), Actinobacteria (14%), Acidobacteria (11%), Bacteroidetes (8%), Firmicutes (7%), Chloroflexi (6%), Verrucomicrobia (4%), Gemmatimonadete (4%), Planctomycetes (3%), and Nitrospirae (1%), with the relative abundance in the descending order (Figure 4A). Based on the composition of major phyla found in our study, PCoA of the Bray-Curtis distances was conducted to reveal that the beta-diversity of bacterial community was significantly separated between into rhizosphere and bulk soils

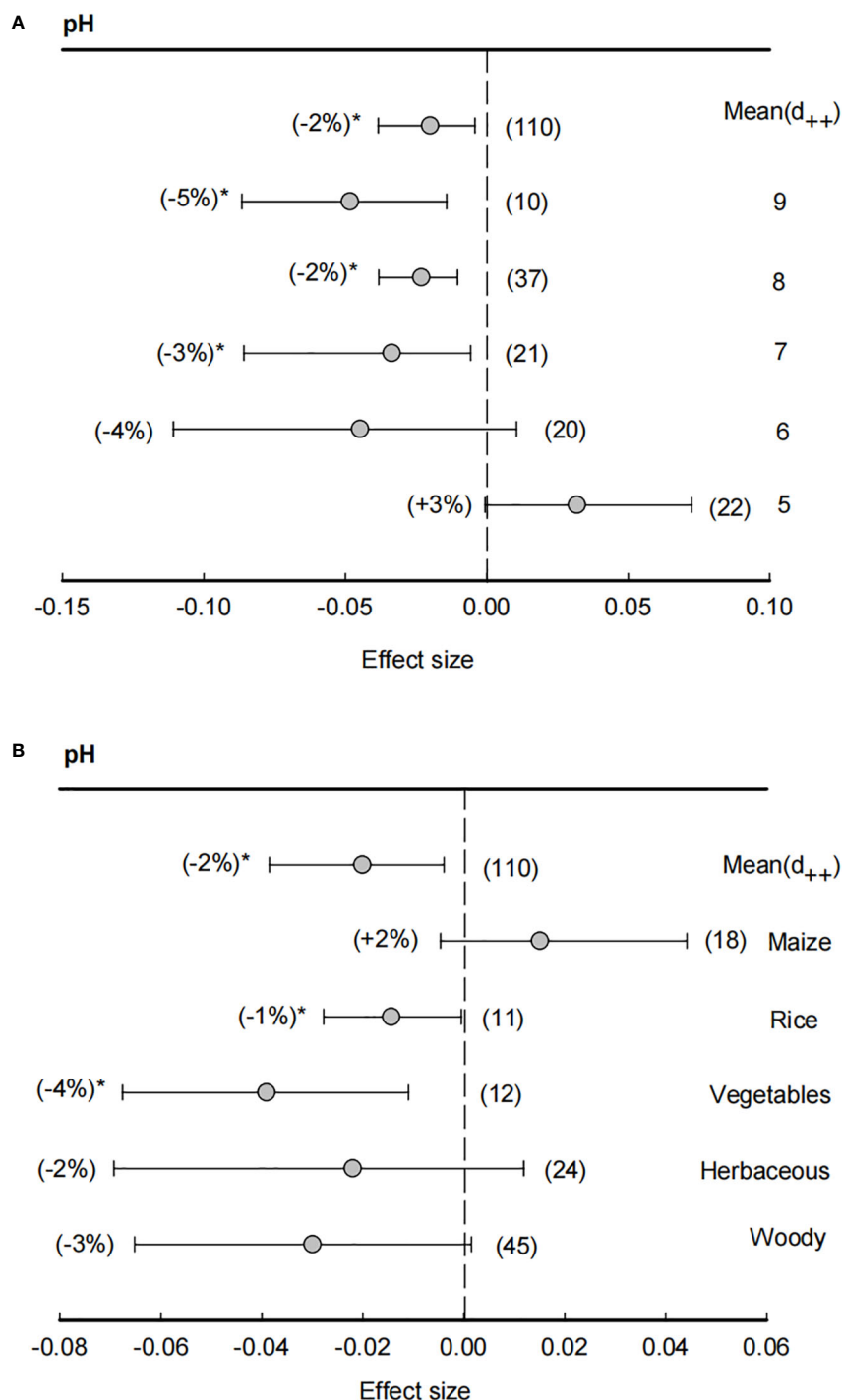


FIGURE 2

Effect size of soil pH (A) and plant species effect on soil pH (B). The bulk soil pH was grouped ranging from 5 (pH < 5), 6 (5 ≤ pH < 6), 7 (6 ≤ pH < 7), 8 (7 ≤ pH < 8) and 9 (8 ≤ pH < 9). Plant species including maize, rice, vegetables, herbaceous and woody plants. Data are expressed as the mean effect size (d<sub>++</sub>) with bias-corrected 95% confidence intervals. Percentage changes for means and observation numbers for the category are given in parentheses. Asterisk indicates  $P < 0.05$ .

(PERMANOVA,  $P < 0.0001$ ) (Figure 4B). Specifically, the bacterial community structure of rhizosphere soils was also dependent on plant species (PERMANOVA,  $P < 0.0001$ ) (Figure 4C). For example, the bacterial community structure in vegetable rhizosphere was significantly separated from those in maize, rice, and woody plants (PERMANOVA,  $P < 0.0001$ ).

### 3.3 Variation of the phylum in different plant species rhizosphere soil

In total, there were two major phyla showing significantly ( $P < 0.05$ ) positive effect size of plant rhizosphere, including Bacteroidetes (+27%) and Proteobacteria (+24%) (Figure 5).

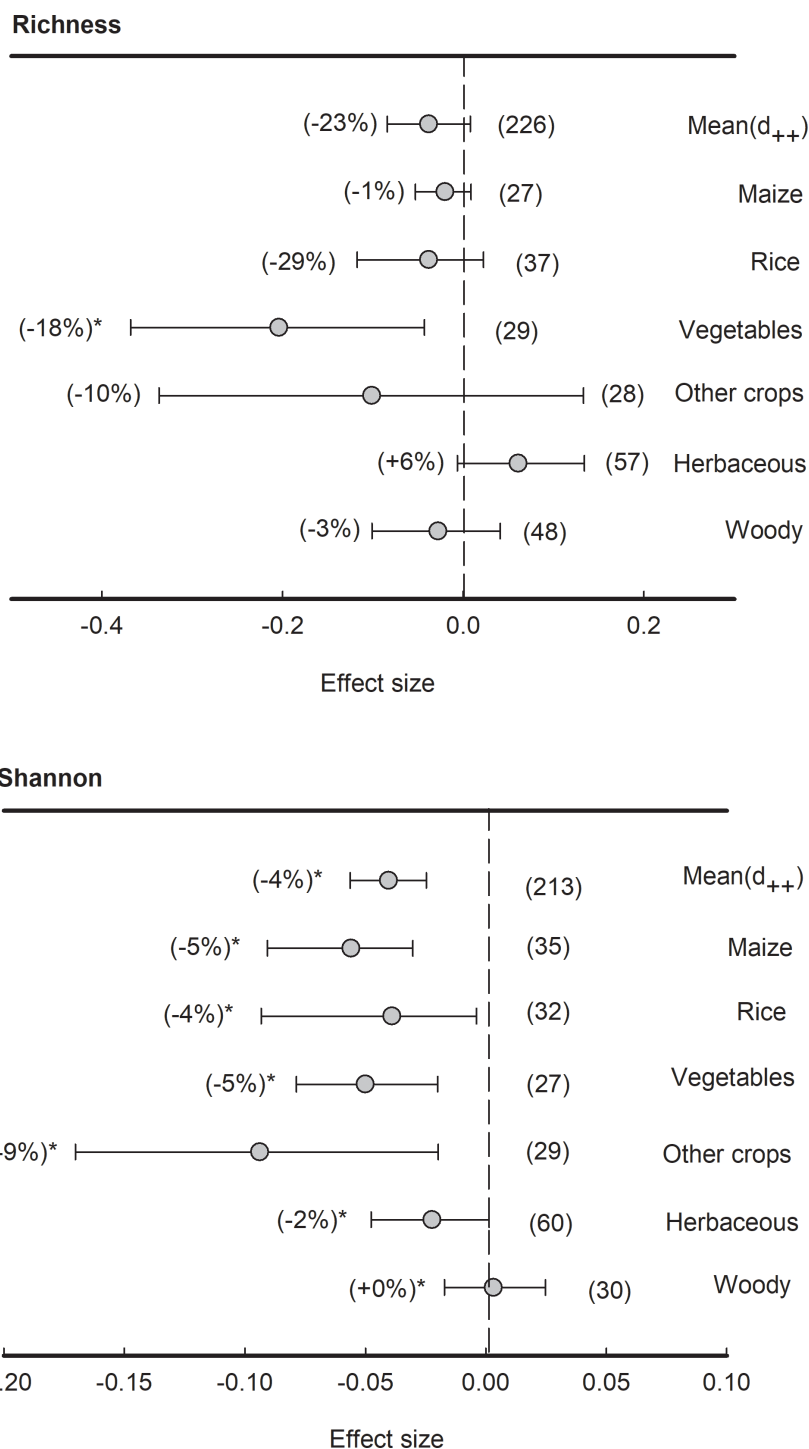


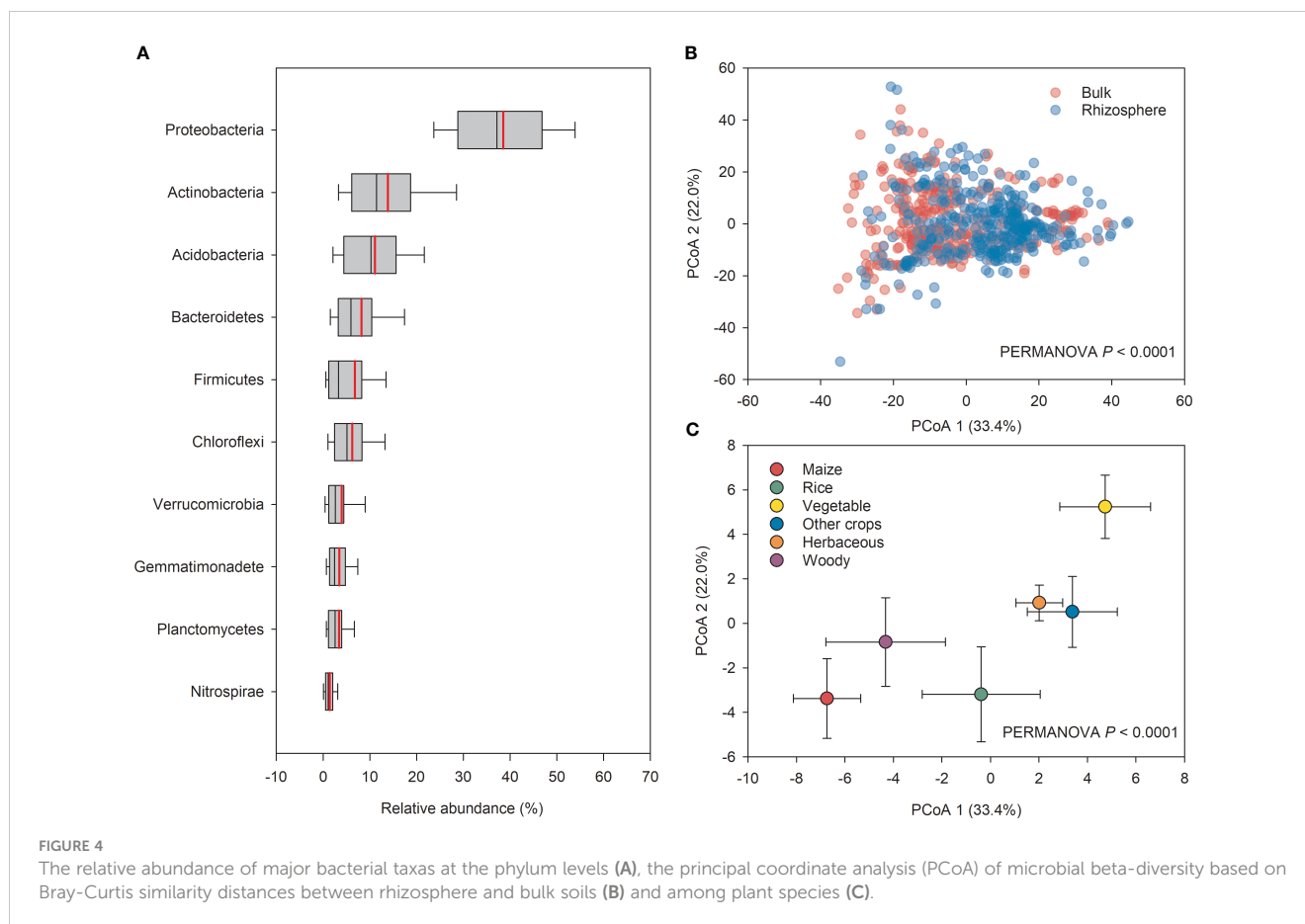
FIGURE 3

Effects of plant species on bacterial alpha-diversity, i.e., Richness and Shannon indices, grouped by the plant species. Data is expressed as the mean effect size ( $d_{++}$ ) with bias-corrected 95% confidence intervals. Percentage changes for means and observation numbers for the category are given in parentheses. Asterisk indicates  $P < 0.05$ .

When the dataset was divided by plant species, the relative abundance of Bacteroidetes was significantly ( $P < 0.05$ ) enriched in the rhizosphere of maize (+34%), vegetables (+47%), woody plants (+38%), and other crops (+91%). The phylum of Proteobacteria was generally enhanced in the rhizosphere of all plant species except

rice, such as maize (+20%), vegetables (+25%), herbaceous (+22%), and woody plants (+35%).

However, four bacterial phyla with average relative abundance over 5% had an overall negative effect size of plant rhizosphere across all plant species, although the reduction percentages varied,



such as Acidobacteria (-28%), Actinobacteria (-7%), Firmicutes (-14%), and Chloroflexi (-12%) (Figure 6). Specifically, in Acidobacteria, though all plant species had negative effect size, the negative effects of rhizosphere in vegetables was the lowest (-48%), significantly ( $P < 0.05$ ) lower than those in maize (-18%) and herbaceous plants (-22%). In Actinobacteria, all plant species, with the exception of maize (-4%) and vegetables (+32%), exhibited negative effect sizes ranging from -18% to -10%. In Firmicutes, both herbaceous (-27%) and woody plants (-33%) showed negative responses to rhizosphere effects, but those in maize (28%) and rice (52%) were contrarily enriched in the rhizosphere. In Chloroflexi, apart from herbaceous plants showing a positive effect size (+28%), the plant rhizosphere effects were consistently negative across all other plant types (ranging from -42% to -16%).

With an average relative abundance of less than 5%, three bacterial phyla showed negative effect size in general, including Gemmatimonadete (-29%), Nitrospirae (-42%), and Planctomycetes (-15%) (Figure 7). The phylum Gemmatimonadete was significantly ( $P < 0.05$ ) depleted in the rhizosphere of all plant types except herbaceous plants and other crops, such as maize (-31%), rice (-51%), vegetables (-42%), and woody plants (-28%). Furthermore, the phylum Nitrospirae was significantly ( $P < 0.05$ ) depleted in the rhizosphere of all plant species (from -77% to -19%). Similarly, in Planctomycetes, the effect sizes of rhizosphere effects were all negative across all plant types (from -37% to -17%) except herbaceous plants.

Last but not least, although Verrucomicrobia showed no significant response to the rhizosphere effect on average, maize had a significantly ( $P < 0.05$ ) positive effect size (+39%), while herbaceous plants had a negative effect size in the rhizosphere (-9%).

In fungal communities, the effect size of rhizosphere was less significant compared to bacteria. Neither Ascomycota nor Basidiomycota showed a significant ( $P < 0.05$ ) response to the rhizosphere effect (Figure 8). However, the phylum Ascomycota enriched in the rhizosphere of maize (+30%) and vegetables (+32%), while the phylum Basidiomycota depleted in the rhizosphere of maize (-52%) and vegetables (-60%), and enriched in herbaceous plants (+22%).

## 4 Discussion

### 4.1 Soil pH responding to rhizosphere effects in various plant species

Our meta-analysis revealed that both the effect sizes of bulk soil  $\text{pH} > 6$  and the mean effect sizes of soil  $\text{pH}$  were significantly negative (Figure 2). These findings imply that most plants tend to decrease the rhizosphere soil  $\text{pH}$  compared with the bulk soil across all studies. A previous study has reported that the release of  $\text{H}^+$  by roots is a dominant mechanism for plants to mobilize nutrients and maintain electrochemical potential on the root surface in slightly acidic, neutral,

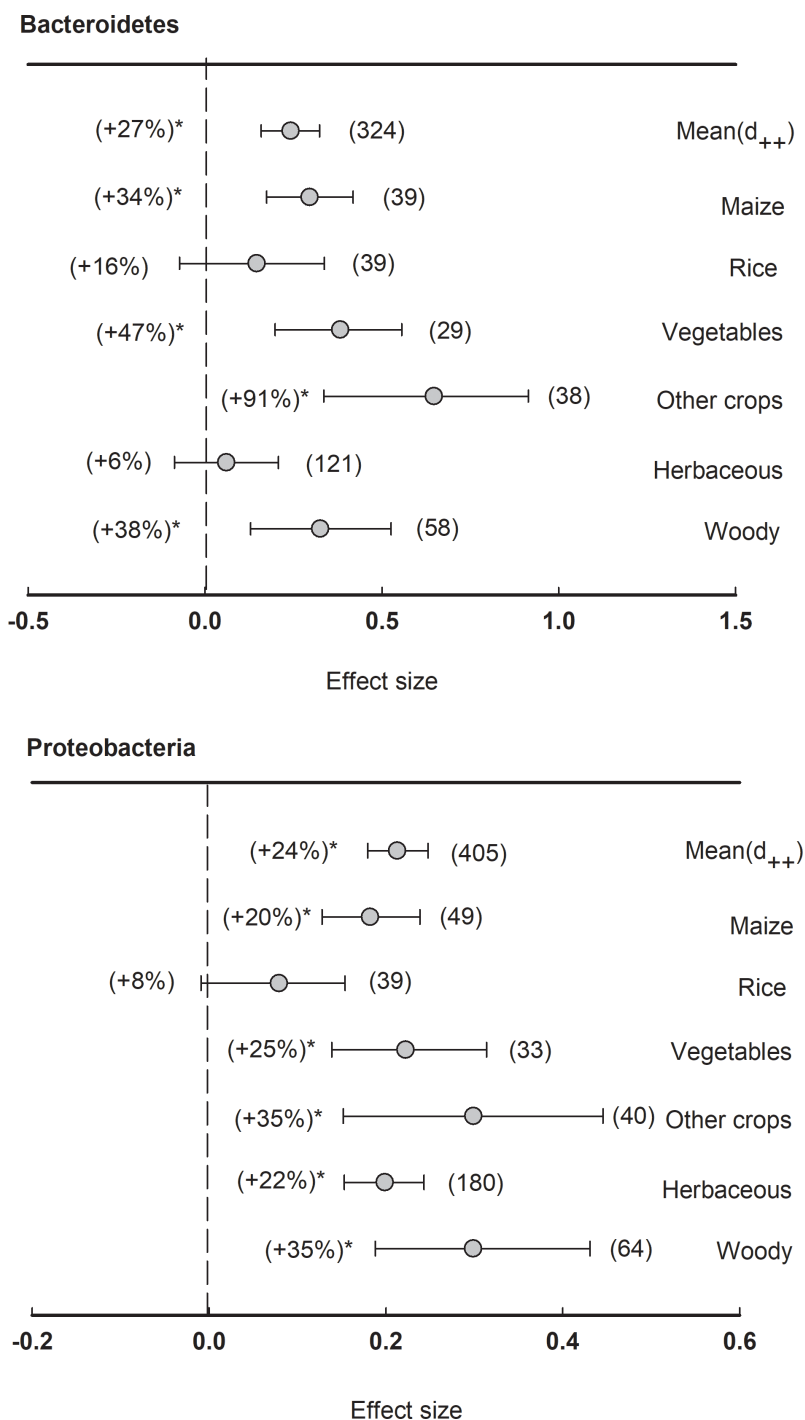


FIGURE 5

Plant rhizosphere effects on major bacterial phyla (mean proportion > 5%), i.e., Bacteroidetes and Proteobacteria, grouped by the plant species including maize, rice, vegetables, other crops, herbaceous and woody plants. Data is expressed as the mean effect size ( $d_{++}$ ) with bias-corrected 95% confidence intervals. Percentage changes for means and observation numbers for the category are given in parentheses. Asterisk indicates  $P < 0.05$ .

and alkaline soils (Marschner, 2012). Under the extreme soil pH condition (too low or too high), plant roots can mitigate the constraints, such as plant roots that could alleviate  $Al^{3+}$  or  $Fe^{3+}$  toxicity in acidic pH conditions, and also Fe or Mn deficiency in alkaline pH conditions (Philippot et al., 2013; Kuzyakov and Razavi, 2019). Thus, our results that the effect sizes of rhizosphere were significantly lower than zero in soil pH > 6 further suggested that plant

roots could alleviate constraints under neutral or slightly alkaline conditions. Moreover, our result showed the effect sizes of rice and vegetables were significantly lower than zero, which implies that the roots of rice and vegetables tend to acidify the rhizosphere soil more severely than other plants. This is in line with the fact that rice root exudates organic acid decreasing rhizosphere soil pH, increasing amino acid availability, and promoting ammonia release and



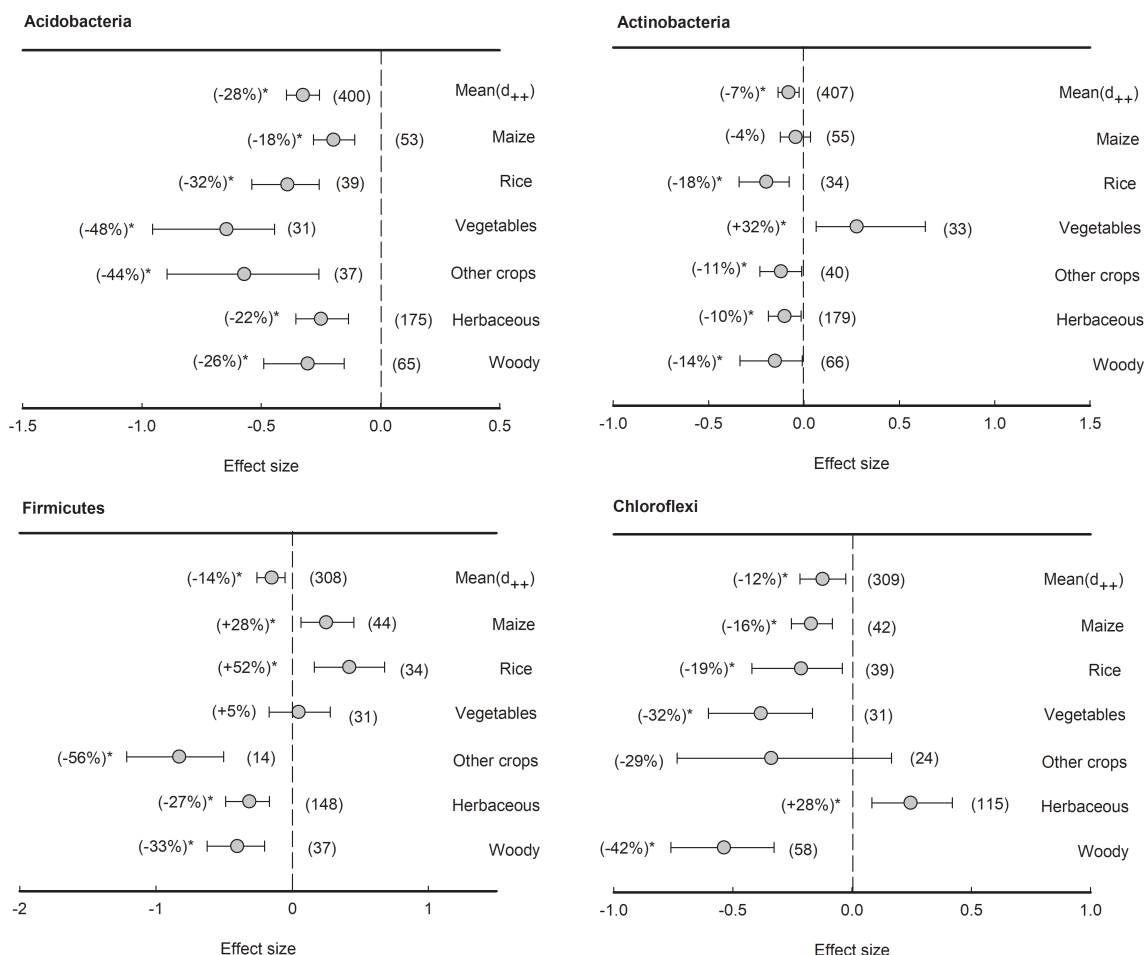


FIGURE 6

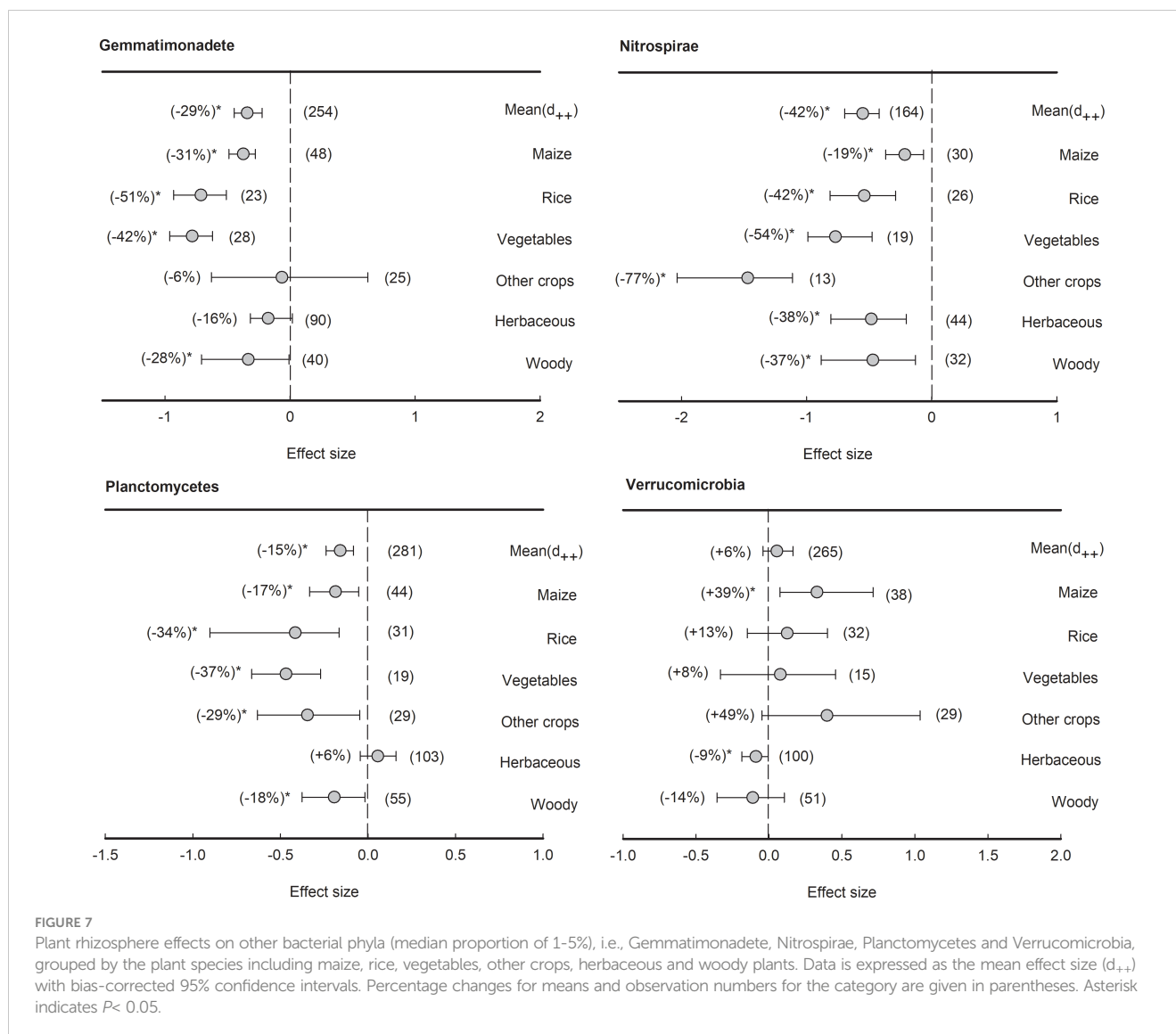
Plant rhizosphere effects on major bacterial phyla (mean proportion > 5%), i.e., Acidobacteria, Actinobacteria, Firmicutes and Chloroflexi, grouped by the plant species including maize, rice, vegetables, other crops, herbaceous and woody plants. Data is expressed as the mean effect size ( $d_{++}$ ) with bias-corrected 95% confidence intervals. Percentage changes for means and observation numbers for the category are given in parentheses. Asterisk indicates  $P < 0.05$ .

subsequent nitrification (Dohrmann et al., 2013; Di Salvo et al., 2018). Furthermore, legumes acidify the rhizosphere soil through excess cation uptakes during  $N_2$  fixation and photosynthetic activity to alter cation-anion uptake ratios (Bolan et al., 1991; Rao et al., 2000; Rao et al., 2002). Similarly, it has been found that the rhizosphere soil pH of pak choi decreased by root exudates, which mainly consist of organic acids and amino acids (e.g., citric acid, ferulic acid, cinnamic acid, glutamic acid, alanine, and valine) (Kim et al., 2017; Jeon et al., 2018; Cai et al., 2019). As previous studies report most plant species tend to acidify the rhizosphere soil (Kuzyakov and Razavi, 2019), our results further provide substantial evidences to support that these pH variation may significantly contribute to the assembly of soil microbial community in plant rhizosphere.

## 4.2 Distinct microbial community diversity and structure in the rhizosphere

In our analysis, PCoA of the Bray-Curtis distances showed significant clustering of bacterial communities between rhizosphere

and bulk soils, with decreased community diversity (Shannon index) observed in the rhizosphere soil across different plant species (Figures 3, 4B). This is consistent with previous findings that diversity decreased from the bulk soil to the roots (Poole, 2017; Semenov et al., 2019). The significant contrast between the bulk soil and rhizosphere soil is a crucial factor contributing to variations in microbiota composition (Yan et al., 2017; Ren et al., 2020). For example, Fan et al. (2017) reported that the distance decay relationship (from the root surface to bulk soil) can reflect variations in microbial community composition. In addition, it has been suggested that the decrease in diversity from the bulk soil to roots could be attributed to root "rhizosphere effect" (Bulgarelli et al., 2012; Lundberg et al., 2012; Barajas et al., 2020; Attia et al., 2022; Santoyo, 2022). Specific microorganisms are commonly selected by plant roots to colonize the rhizosphere, which can attract beneficial microorganisms to improve nutrient acquisition and combat pathogenic taxa for plants (Dennis et al., 2010; Berendsen et al., 2012; Fan et al., 2017). Generally, the rhizosphere is a highly selective environment that can select microbiome through two distinct processes (Fan et al., 2017; Fan



et al., 2018). The first process involves the general recruitment of microbes to the proximity of the root, whereas the second process involves the transition of microbes from external to internal occupancy in the root (Edwards et al., 2015). Molecular signals from plants, including components of root exudates and possibly cell wall or membrane proteins (Edwards et al., 2015; Edwards et al., 2018; Kuz'yakov and Razavi, 2019), are involved in the selection of microbial communities. Notably, the DNA extraction protocols for metagenomic DNA, particularly in relation to rhizosphere and soil samples, may introduce inherent biases due to variations in rhizosphere soil sampling procedures and differences arising from DNA extraction methods. Despite the presence of disparities, our study represents a comprehensive synthesis of over 100 studies, thus mitigating any potential systematic biases.

Additionally, the results of the present meta-analysis showed that rhizosphere soil microbial community structure varies depending on plant species (Figure 4C). This is in agreement with previous studies that the plant species and the genotypes of individual plants can exert a profound influence on the

composition of their associated microbial communities in the rhizosphere (Schweitzer et al., 2008; Lau and Lennon, 2012; Bever et al., 2013). However, our meta-analysis showed the phyla Proteobacteria and Bacteroidetes are consistently enriched in the rhizosphere (Figure 5). This result suggests that the phyla Proteobacteria and Bacteroidetes are well-suited to the rhizosphere, which provides C-rich conditions for high metabolic activity, fast growth, and propagation (Pausch et al., 2013; Kuz'yakov and Razavi, 2019). The phyla Proteobacteria and Bacteroidetes are generally considered r-strategists and copiotrophs that respond to labile C sources, and fast-growing microbiota with population opportunity fluctuations (Fierer et al., 2007; Peiffer et al., 2013). In contrast, our meta-analysis showed that the phyla Acidobacteria, Gemmatimonadete, Nitrospirae, and Planctomycetes are consistently depleted in the rhizosphere (Figures 6, 7). It has been previously reported that the phyla Acidobacteria were depleted in wheat rhizosphere under the field of North China Plain (Fan et al., 2017). Moreover, a previous study reported that the phyla Acidobacteria were enriched in the bulk soil,

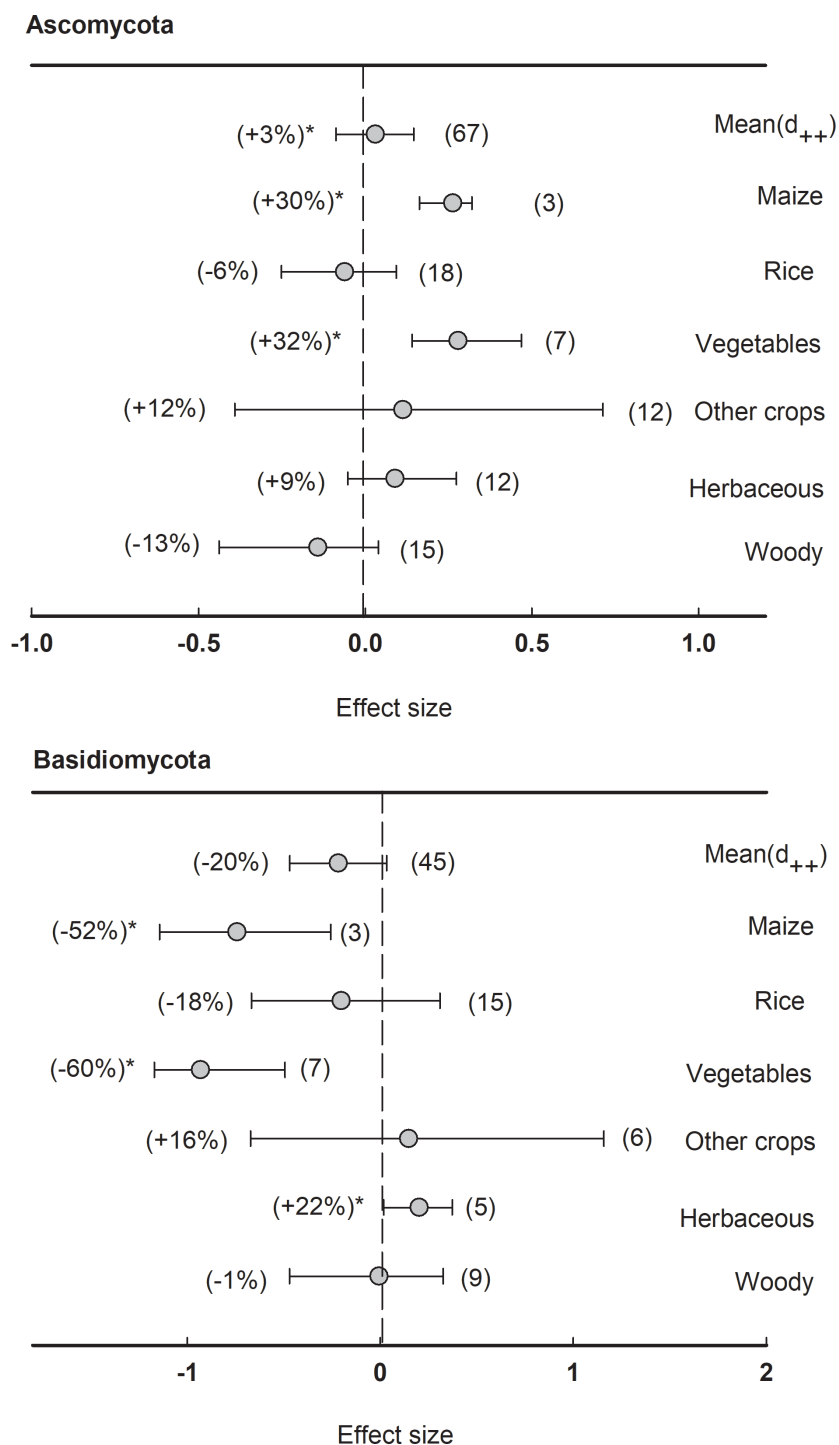


FIGURE 8

Plant rhizosphere effects on major fungal phyla (mean proportion > 5%), i.e. Ascomycota and Basidiomycota, grouped by the plant species including maize, rice, vegetables, other crops, herbaceous and woody plants. Data is expressed as the mean effect size ( $d_{++}$ ) with bias-corrected 95% confidence intervals. Percentage change for means and observation numbers for the category are given in parentheses. Asterisk indicates  $P < 0.05$ .

while depleted in the rhizosphere soil under the Central European grasslands and forests (Kaiser et al., 2016). Similar results have been revealed in Mexico's agroecosystem, German grassland, and forest soil as well (Foesel et al., 2014; Embarcadero-Jimenez et al., 2016; Dawson et al., 2017). As a result, these phyla are extremely similar in rhizosphere soil across varied plant species (Ling et al., 2022).

Similarly, Planctomycetes are more abundant in the rhizosphere than in bulk soil (Fierer et al., 2007). The phyla Gemmatimonadete, Nitrospirae, and Planctomycetes have been extensively detected as K-strategists (slow-growing microbiota) and oligotrophic that are adapted to survive when resource was limited or low substrate concentrations (Fontaine et al., 2003; Bernard et al., 2007;

Blackburne et al., 2007), and generally considered to be enriched in the bulk soil with less energy and nutrients compared with the rhizosphere soil. Overall, our meta-analysis implied that the phyla Proteobacteria and Bacteroidetes enriched commonly in the rhizosphere of most plant species, while Acidobacteria, Gemmatimonadete, Nitrospirae, and Planctomycetes were depleted contrarily by plant rhizosphere effects. Notably, agricultural practices might make up the plant-associated microbial communities. Tillage can lead to shifts in microbial communities as anaerobic microorganisms are exposed to oxygen (Coleman-Derr et al., 2016; Dawson et al., 2017). Reduced or no-till farming can preserve anaerobic niches and maintain a different microbial community structure. Synthetic fertilizers often provide easily accessible nutrients, which can favor certain microbial taxa, while organic fertilizers release nutrients slowly, supporting a more diverse microbial community (Yang et al., 2017). Crop rotation and the diversity of crops planted in a field can provide different root exudates and organic matter, altering the nutrient availability and microbial community. This practice promotes a more diverse and dynamic microbial community (Visioli et al., 2018; Wang et al., 2020).

Moreover, the responses of the phyla Actinobacteria, Firmicutes, Chloroflexi, and Verrucomicrobia to plant rhizosphere were highly dependent on plant species (Figures 6, 7). The phyla Actinobacteria was significantly depleted in the rhizosphere of rice, herbaceous, woody, and other crops, while enriched in that of vegetables. For example, it has been found that the phylum Actinobacteria dominated the wild beet rhizosphere (Zachow et al., 2014) and lettuce rhizosphere (Blau et al., 2019). Additionally, the phylum Actinobacteria has been shown to dominate in the pak choi rhizosphere compared with the bulk soil with or without Se application (Cai et al., 2019). In addition, we showed that the phylum Chloroflexi significantly depleted in the rhizosphere of maize, rice, vegetables, and woody, while enriched in that of herbaceous plants (Figure 6). This is in agreement with a previous study reporting that the relative abundance of Chloroflexi increased from 2.7% to 8.0% in the rhizosphere compared to the bulk soil across 19 herbaceous plants (Dawson et al., 2017). We found that the phyla Firmicutes significantly enriched in the rhizosphere of maize and rice, while depleted in those of herbaceous, woody plants, and other crops. This is in line with previous studies observing that the phylum Firmicutes significantly increased in the rhizosphere compared with the bulk soil in maize fields at different rice growth stages (de Araujo et al., 2019; Li et al., 2019). Similarly, the abundance of Verrucomicrobia revealed opposite trends between the rhizosphere of maize and herbaceous plants (Figure 7), which was greatly observed in previous studies (Coleman-Derr et al., 2016; Dawson et al., 2017; Yang et al., 2017; Visioli et al., 2018; Wang et al., 2020).

Additionally, the phyla Ascomycota and Basidiomycota were the dominant fungal communities having distinct responses to rhizosphere depending on plant species (Figure 8), indicating that plant species differentiate their root microbiota in a species-specific manner (Berg and Smalla, 2009; Aira et al., 2010; Dawson et al., 2017). Such as, Ascomycota had a higher relative abundance in the rhizosphere of maize. In contrast, bulk soils had a higher abundance

of Basidiomycota (Philippot et al., 2013). Commonly, plant species determine the structure of the rhizosphere soil microbial community as follows: firstly, the soil layer surrounding the roots promotes the growth of organotrophic microorganisms and initiates a shift in the soil microbiome through rhizodeposits and root cell wall features (Bulgarelli et al., 2013); secondly, the selection process that depends on the host genotype occurs close to the root surface (Reinhold-Hurek et al., 2015), fine-tuning the community profiles that thrive on the rhizoplane. Overall, the phyla Proteobacteria and Bacteroidetes are considered r-strategists that enriched in rhizosphere across all plant species, while Acidobacteria, Gemmatimonadete, Nitrospirae, and Planctomycetes are considered as K-strategists that depleted in rhizosphere across all plant species. Especially, Actinobacteria, Firmicutes, Chloroflexi, and Verrucomicrobia were selected in a species-specific manner from various plant species, thus revealing divergent abundance among different plants.

## 5 Conclusions

Our study demonstrates a significant distinction in the microbial community structure between the bulk and rhizosphere soils, which simultaneously vary depending on plant species. In particular, r-strategists (e.g. Proteobacteria and Bacteroidetes) enriched in the rhizosphere but K-strategists (e.g. Acidobacteria, Gemmatimonadete, Nitrospirae, and Planctomycetes) depleted in the rhizosphere. In contrast, the responses of some microbiota (e.g. Actinobacteria, Firmicutes, Chloroflexi, Verrucomicrobia, Ascomycota, and Basidiomycota) to plant rhizosphere effects were dependent on plant types through species-specific manner. This meta-analysis has revealed that plants generally exert a rhizosphere acidification effect through the release of organic acids via root exudates, which may particularly affect certain microbial species in the rhizosphere. Further investigations are needed to identify various environmental factors that influence plants and, subsequently, their influences on the rhizosphere microbiota associated with nutrient cycling and soil health.

## Data availability statement

The original contributions presented in the study are included in the article/Supplementary Material. Further inquiries can be directed to the corresponding authors.

## Author contributions

XF and YH contributed equally to this study. All authors contributed to the article and approved the submitted version.

## Funding

The author(s) declare financial support was received for the research, authorship, and/or publication of this article. This work

was financially funded by the National Natural Science Foundation of China (42277282; 32101273), Basic and Applied Basic Research Foundation of Guangdong Province (2022A1515010861; 2022A1515012068), Shenzhen Science and Technology Program (JCYJ20220530150201003), and Young Teachers Team Project of Fundamental Research Funds for the Central Universities, Sun Yat-sen University (22qntd2702).

## Conflict of interest

The authors declare that the research was conducted in the absence of any commercial or financial relationships that could be construed as a potential conflict of interest.

## References

- Aira, M., Gómez-Brandón, M., Lazcano, C., Bååth, E., and Domínguez, J. (2010). Plant genotype strongly modifies the structure and growth of maize rhizosphere microbial communities. *Soil Biol. Biochem.* 42 (12), 2276–2281. doi: 10.1016/j.soilbio.2010.08.029
- Attia, S., Russel, J., Mortensen, M. S., Madsen, J. S., and Sørensen, S. J. (2022). Unexpected diversity among small-scale sample replicates of defined plant root compartment. *ISME J.* 16, 997–1003. doi: 10.1038/s41396-021-01094-7
- Barajas, H. R., Martínez-Sánchez, S., Romero, M. F., Álvarez, C. H., Servín-González, L., Peimbert, M., et al. (2020). Testing the two-step model of plant root microbiome acquisition under multiple plant species and soil sources. *Front. Microbiol.* 11, 2445. doi: 10.3389/fmicb.2020.542742
- Berendsen, R. L., Pieterse, C. M. J., and Bakker, P. A. H. M. (2012). The rhizosphere microbiome and plant health. *Trends Plant Sci.* 17 (8), 478–486. doi: 10.1016/j.tplants.2012.04.001
- Berg, G., and Smalla, K. (2009). Plant species and soil type cooperatively shape the structure and function of microbial communities in the rhizosphere. *FEMS Microbiol. Ecol.* 68 (1), 1–13. doi: 10.1111/j.1574-6941.2009.00654.x
- Bernard, L., Mougél, C., Maron, P. A., Nowak, V., Leveque, J., Henault, C., et al. (2007). Dynamics and identification of soil microbial populations actively assimilating carbon from <sup>13</sup>C-labelled wheat residue as estimated by DNA- and RNA-SIP techniques. *Environ. Microbiol.* 9 (3), 752–764. doi: 10.1111/j.1462-2920.2006.01197.x
- Bever, J. D., Broadhurst, L. M., and Thrall, P. H. (2013). Microbial phylotype composition and diversity predicts plant productivity and plant-soil feedbacks. *Ecol. Lett.* 16 (2), 167–174. doi: 10.1111/ele.12024
- Blackburne, R., Vadivelu, V. M., Yuan, Z., and Keller, J. (2007). Kinetic characterisation of an enriched Nitrospira culture with comparison to Nitrobacter. *Water Res.* 41 (14), 3033–3042. doi: 10.1016/j.watres.2007.01.043
- Blau, K., Jacquioud, S., Sorensen, S. J., Su, J. Q., Zhu, Y. G., Smalla, K., et al. (2019). Manure and Doxycycline affect the bacterial community and its resistome in lettuce rhizosphere and bulk soil. *Front. Microbiol.* 10 (1), 725. doi: 10.3389/fmicb.2019.00725
- Bokulich, N. A., Thorngate, J. H., Richardson, P. M., and Mills, D. A. (2014). Microbial biogeography of wine grapes is conditioned by cultivar, vintage, and climate. *Proc. Natl. Acad. Sci.* 111, E139–E148. doi: 10.1073/pnas.1317377110
- Bolan, N. S., Hedley, M. J., and White, R. E. (1991). Processes of soil acidification during nitrogen cycling with emphasis on legume based pastures. *Plant Soil* 134 (1), 53–63. doi: 10.1007/BF00010717
- Bulgarelli, D., Rott, M., Schlaeppi, K., Ver Loren van Themaat, E., Ahmadinejad, N., Assenza, F., et al. (2012). Revealing structure and assembly cues for Arabidopsis root-inhabiting bacterial microbiota. *Nature* 488, 91–95. doi: 10.1038/nature11336
- Bulgarelli, D., Schlaeppi, K., Spaepen, S., van Themaat, E. V. L., and Schulze-Lefert, P. (2013). Structure and functions of the bacterial microbiota of plants. *Annu. Rev. Plant Biol.* 64, 807–838. doi: 10.1146/annurev-arplant-050312-120106
- Cai, M., Hu, C., Wang, X., Zhao, Y., Jia, W., Sun, X., et al. (2019). Selenium induces changes of rhizosphere bacterial characteristics and enzyme activities affecting chromium/selenium uptake by pak choi (*Brassica campestris* L. ssp. *Chinensis* Makino) in chromium contaminated soil. *Environ. Pollut.* 249, 716–727. doi: 10.1016/j.envpol.2019.03.079
- Chen, H., Dai, Z., Jager, H. I., Wullschlegel, S. D., Xu, J., and Schadt, C. W. (2019). Influences of nitrogen fertilization and climate regime on the above-ground biomass yields of miscanthus and switchgrass: A meta-analysis. *Renewable Sustain. Energy Rev.* 108, 303–311. doi: 10.1016/j.rser.2019.03.037
- Chen, H., Ma, K., Huang, Y., Fu, Q., Qiu, Y., and Yao, Z. (2022). Significant response of microbial community to increased salinity across wetland ecosystems. *Geoderma* 415, 115778. doi: 10.1016/j.geoderma.2022.115778
- Cheng, W. X. (1999). Rhizosphere feedbacks in elevated CO<sub>2</sub>. *Tree Physiol.* 19 (4), 313–320. doi: 10.1093/treephys/19.4-5.313
- Coleman-Derr, D., Desgarnes, D., Fonseca-Garcia, C., Gross, S., Clingenpeel, S., Woyke, T., et al. (2016). Plant compartment and biogeography affect microbiome composition in cultivated and native Agave species. *New Phytol.* 209 (2), 798–811. doi: 10.1111/nph.13697
- Costa, R., Gotz, M., Mrotzek, N., Lottmann, J., Berg, G., and Smalla, K. (2006). Effects of site and plant species on rhizosphere community structure as revealed by molecular analysis of microbial guilds. *FEMS Microbiol. Ecol.* 56 (2), 236–249. doi: 10.1111/j.1574-6941.2005.00026.x
- Dai, Z., Su, W., Chen, H., Barberan, A., Zhao, H., Yu, M., et al. (2018). Long-term nitrogen fertilization decreases bacterial diversity and favors the growth of Actinobacteria and Proteobacteria in agro-ecosystems across the globe. *Global Change Biol.* 24 (8), 3452–3461. doi: 10.1111/gcb.14163
- Dawson, W., Hor, J., Egert, M., van Kleunen, M., and Pester, M. (2017). A small number of low-abundance bacteria dominate plant species-specific responses during rhizosphere colonization. *Front. Microbiol.* 8, 975. doi: 10.3389/fmicb.2017.00975
- de Araujo, A. S. F., Miranda, A. R. L., Sousa, R. S., Mendes, L. W., Antunes, J. E. L., Oliveira, L., et al. (2019). Bacterial community associated with rhizosphere of maize and cowpea in a subsequent cultivation. *Appl. Soil Ecol.* 143, 26–34. doi: 10.1016/j.apsoil.2019.05.019
- Dennis, P. G., Miller, A. J., and Hirsch, P. R. (2010). Are root exudates more important than other sources of rhizodeposits in structuring rhizosphere bacterial communities? *FEMS Microbiol. Ecol.* 72 (3), 313–327. doi: 10.1111/j.1574-6941.2010.00860.x
- Di Salvo, L. P., Cellucci, G. C., Carlino, M. E., and García de Salamone, I. E. (2018). Plant growth-promoting rhizobacteria inoculation and nitrogen fertilization increase maize (*Zea mays* L.) grain yield and modified rhizosphere microbial communities. *Appl. Soil Ecol.* 126, 113–120. doi: 10.1016/j.apsoil.2018.02.010
- Dohrmann, A. B., Kuting, M., Junemann, S., Jaenicke, S., Schluter, A., and Tebbe, C. C. (2013). Importance of rare taxa for bacterial diversity in the rhizosphere of Bt- and conventional maize varieties. *ISME J.* 7 (1), 37–49. doi: 10.1038/ismej.2012.77
- Edwards, J., Johnson, C., Santos-Medellin, C., Lurie, E., Podishetty, N. K., Bhatnagar, S., et al. (2015). Structure, variation, and assembly of the root-associated microbiomes of rice. *Proc. Natl. Acad. Sci.* 112 (8), E911–E920. doi: 10.1073/pnas.1414592112
- Edwards, J. D., Pittelkow, C. M., Kent, A. D., and Yang, W. H. (2018). Dynamic biochar effects on soil nitrous oxide emissions and underlying microbial processes during the maize growing season. *Soil Biol. Biochem.* 122, 81–90. doi: 10.1016/j.soilbio.2018.04.008
- Embarcadero-Jimenez, S., Rivera-Orduna, F. N., and Wang, E. T. (2016). Bacterial communities estimated by pyrosequencing in the soils of Chinampa, a traditional sustainable agro-ecosystem in Mexico. *J. Soils Sediments* 16 (3), 1001–1011. doi: 10.1007/s11368-015-1277-1
- Fan, K., Cardona, C., Li, Y., Shi, Y., Xiang, X., Shen, C., et al. (2017). Rhizosphere-associated bacterial network structure and spatial distribution differ significantly from bulk soil in wheat crop fields. *Soil Biol. Biochem.* 113, 275–284. doi: 10.1016/j.soilbio.2017.06.020

## Publisher's note

All claims expressed in this article are solely those of the authors and do not necessarily represent those of their affiliated organizations, or those of the publisher, the editors and the reviewers. Any product that may be evaluated in this article, or claim that may be made by its manufacturer, is not guaranteed or endorsed by the publisher.

## Supplementary material

The Supplementary Material for this article can be found online at: <https://www.frontiersin.org/articles/10.3389/fpls.2023.1252821/full#supplementary-material>

- Fan, K., Weisenhorn, P., Gilbert, J. A., Shi, Y., Bai, Y., and Chu, H. (2018). Soil pH correlates with the co-occurrence and assemblage process of diazotrophic communities in rhizosphere and bulk soils of wheat fields. *Soil Biol. Biochem.* 121, 185–192. doi: 10.1016/j.soilbio.2018.03.017
- Fierer, N., Bradford, M. A., and Jackson, R. B. (2007). Toward an ecological classification of soil bacteria. *Ecology* 88 (6), 1354–1364. doi: 10.1890/05-1839
- Fierer, N., and Jackson, R. B. (2006). The diversity and biogeography of soil bacterial communities. *Proc. Natl. Acad. Sci. United States America* 103 (3), 626–631. doi: 10.1073/pnas.0507535103
- Finkel, O. M., Castrillo, G., Paredes, S. H., Gonzalez, I. S., and Dangel, J. L. (2017). Understanding and exploiting plant beneficial microbes. *Curr. Opin. Plant Biol.* 38, 155–163. doi: 10.1016/j.copbio.2017.04.018
- Foesel, B. U., Naegele, V., Naether, A., Wuest, P. K., Weinert, J., Bonkowski, M., et al. (2014). Determinants of Acidobacteria activity inferred from the relative abundances of 16S rRNA transcripts in German grassland and forest soils. *Environ. Microbiol.* 16 (3), 658–675. doi: 10.1111/1462-2920.12162
- Fontaine, S., Mariotti, A., and Abbadie, L. (2003). The priming effect of organic matter: a question of microbial competition? *Soil Biol. Biochem.* 35 (6), 837–843. doi: 10.1016/S0038-0717(03)00123-8
- Garbeva, P., van Elsas, J. D., and van Veen, J. A. (2008). Rhizosphere microbial community and its response to plant species and soil history. *Plant Soil* 302 (1-2), 19–32. doi: 10.1007/s11104-007-9432-0
- Gurevitch, J., Koricheva, J., Nakagawa, S., and Stewart, G. (2018). Meta-analysis and the science of research synthesis. *Nature* 555 (7695), 175–182. doi: 10.1038/nature25753
- Hinsinger, P., Plassard, C., Tang, C., and Jaillard, B. (2003). Origins of root-mediated pH changes in the rhizosphere and their responses to environmental constraints: A review. *Plant Soil* 248 (1), 43–59. doi: 10.1023/A:1022371130939
- Hunninghaus, M., Dibbern, D., Kramer, S., Koller, R., Pausch, J., Schloter-Hai, B., et al. (2019). Disentangling carbon flow across microbial kingdoms in the rhizosphere of maize. *Soil Biol. Biochem.* 134, 122–130. doi: 10.1016/j.soilbio.2019.03.007
- Huo, C., Luo, Y., and Cheng, W. (2017). Rhizosphere priming effect: A meta-analysis. *Soil Biol. Biochem.* 111, 78–84. doi: 10.1016/j.soilbio.2017.04.003
- Jackson, O., Quilliam, R. S., Stott, A., Grant, H., and Subke, J. A. (2019). Rhizosphere carbon supply accelerates soil organic matter decomposition in the presence of fresh organic substrates. *Plant Soil* 440 (2), 473–490. doi: 10.1007/s11104-019-04072-3
- Jeon, J., Lim, C. J., Kim, J. K., and Park, S. U. (2018). Comparative metabolic profiling of green and purple Pakchoi (*Brassica Rapa* Subsp. *Chinensis*). *Molecules* 23 (7), 1613. doi: 10.3390/molecules23071613
- Jiang, Y., Li, S., Li, R., Zhang, J., Liu, Y., Lv, L., et al. (2017). Plant cultivars imprint the rhizosphere bacterial community composition and association networks. *Soil Biol. Biochem.* 109, 145–155. doi: 10.1016/j.soilbio.2017.02.010
- Kaiser, K., Wemheuer, B., Korolkow, V., Wemheuer, F., Nacke, H., Schoening, I., et al. (2016). Driving forces of soil bacterial community structure, diversity, and function in temperate grasslands and forests. *Sci. Rep.* 6, 33696. doi: 10.1038/srep33696
- Kaschuk, G., Leffelaar, P. A., Giller, K. E., Alberton, O., Hungria, M., and Kuypers, T. W. (2010). Responses of legumes to rhizobia and arbuscular mycorrhizal fungi: A meta-analysis of potential photosynthate limitation of symbioses. *Soil Biol. Biochem.* 42 (1), 125–127. doi: 10.1016/j.soilbio.2009.10.017
- Kim, M. J., Chiu, Y.-C., Kim, N. K., Park, H. M., Lee, C. H., Juvik, J. A., et al. (2017). Cultivar-specific changes in primary and secondary metabolites in Pak Choi (*Brassica Rapa*, *Chinensis* Group) by methyl jasmonate. *Int. J. Mol. Sci.* 18 (5), 1004. doi: 10.3390/ijms18051004
- Kumar, A., Kuzyakov, Y., and Pausch, J. (2016). Maize rhizosphere priming: field estimates using <sup>13</sup>C natural abundance. *Plant Soil* 409 (2), 87–97. doi: 10.1007/s11104-016-2958-2
- Kuzyakov, Y. (2002). Review: Factors affecting rhizosphere priming effects. *J. Plant Nutr. Soil Sci.* 165 (4), 382–396. doi: 10.1002/1522-2624(200208)165:4<382::AID-JPLN382>3.0.CO;2-#
- Kuzyakov, Y. (2006). Sources of CO<sub>2</sub> efflux from soil and review of partitioning methods. *Soil Biol. Biochem.* 38 (3), 425–448. doi: 10.1016/j.soilbio.2005.08.020
- Kuzyakov, Y., and Razavi, B. S. (2019). Rhizosphere size and shape: Temporal dynamics and spatial stationarity. *Soil Biol. Biochem.* 135, 343–360. doi: 10.1016/j.soilbio.2019.05.011
- Lau, J. A., and Lennon, J. T. (2012). Rapid responses of soil microorganisms improve plant fitness in novel environments. *Proc. Natl. Acad. Sci. United States America* 109 (35), 14058–14062. doi: 10.1073/pnas.1202319109
- Li, X., Rui, J., Mao, Y., Yannarell, A., and Mackie, R. (2014). Dynamics of the bacterial community structure in the rhizosphere of a maize cultivar. *Soil Biol. Biochem.* 68, 392–401. doi: 10.1016/j.soilbio.2013.10.017
- Li, H., Su, J. Q., Yang, X. R., and Zhu, Y. G. (2019). Distinct rhizosphere effect on active and total bacterial communities in paddy soils. *Sci. Total Environ.* 649, 422–430. doi: 10.1016/j.scitotenv.2018.08.373
- Ling, N., Wang, T., and Kuzyakov, Y. (2022). Rhizosphere bacteriome structure and functions. *Nat. Commun.* 13 (1), 836. doi: 10.1038/s41467-022-28448-9
- Lopes, L. D., Hao, J., and Schachtman, D. P. (2021). Alkaline soil pH affects bulk soil, rhizosphere and root endosphere microbiomes of plants growing in a Sandhills ecosystem. *FEMS Microbiol. Ecol.* 97 (4), 028. doi: 10.1093/femsec/fiab028
- Lundberg, D. S., Lebeis, S. L., Paredes, S. H., Yourstone, S., Gehring, J., Malfatti, S., et al. (2012). Defining the core *Arabidopsis thaliana* root microbiome. *Nature* 488 (7409), 11237. doi: 10.1038/nature11237
- Marschner, P., Crowley, D., and Yang, C. H. (2004). Development of specific rhizosphere bacterial communities in relation to plant species, nutrition and soil type. *Plant Soil* 261 (2), 199–208. doi: 10.1023/B:PLSO.0000035569.80747.c5
- Marschner, P. (2012). *Rhizosphere Biology*. Elsevier Academic Press Inc, 525 B Street, Suite 1900, San Diego, Ca 92101-4495 USA. doi: 10.1016/b978-0-12-384905-2.00015-7
- Pausch, J., Zhu, B., Kuzyakov, Y., and Cheng, W. (2013). Plant inter-species effects on rhizosphere priming of soil organic matter decomposition. *Soil Biol. Biochem.* 57, 91–99. doi: 10.1016/j.soilbio.2012.08.029
- Peiffer, J. A., Spor, A., Koren, O., Jin, Z., Tringe, S. G., Dangel, J. L., et al. (2013). Diversity and heritability of the maize rhizosphere microbiome under field conditions. *Proc. Natl. Acad. Sci.* 110 (16), 6548–6553. doi: 10.1073/pnas.1302837110
- Philippot, L., Raaijmakers, J. M., Lemanceau, P., and van der Putten, W. H. (2013). Going back to the roots: the microbial ecology of the rhizosphere. *Nat. Rev. Microbiol.* 11, 789–799. doi: 10.1038/nrmicro3109
- Pii, Y., Mimmo, T., Tomasi, N., Terzano, R., Cesco, S., and Crecchio, C. (2015). Microbial interactions in the rhizosphere: beneficial influences of plant growth-promoting rhizobacteria on nutrient acquisition process. A review. *Biol. Fertil. Soils* 51 (4), 403–415. doi: 10.1007/s00374-015-0996-1
- Poole, P. (2017). Shining a light on the dark world of plant root-microbe interactions. *Proc. Natl. Acad. Sci. United States America* 114 (17), 4281–4283. doi: 10.1073/pnas.1703800114
- Qu, Q., Zhang, Z. Y., Peijnenburg, W., Liu, W. Y., Lu, T., Hu, B. L., et al. (2020). Rhizosphere microbiome assembly and its impact on plant growth. *J. Agric. Food Chem.* 68 (18), 5024–5038. doi: 10.1021/acs.jafc.0c00073
- Rao, T. P., Yano, K., Iijima, M., Yamauchi, A., and Tatsumi, J. (2002). Regulation of rhizosphere acidification by photosynthetic activity in cowpea (*Vigna unguiculata* L. Walp.) seedlings. *Ann. Bot.* 89 (2), 213–220. doi: 10.1093/aob/mcf030
- Rao, T. P., Yano, K., Yamauchi, A., and Tatsumi, J. (2000). A simple method for quantitative estimation of rhizosphere pH along root axes through visualization. *Plant Prod. Sci.* 3 (2), 94–100. doi: 10.1626/pp.3.94
- Reinhold-Hurek, B., Bunger, W., Burbano, C. S., Sabale, M., and Hurek, T. (2015). Roots shaping their microbiome: global hotspots for microbial activity. *Annu. Rev. Phytopathol.* 53, 403–424. doi: 10.1146/annurev-phyto-082712-102342
- Ren, Y., Xun, W., Yan, H., Ma, A., Xiong, W., Shen, Q., et al. (2020). Functional composition dominates the assembly of plant rhizospheric bacterial community. *Soil Biol. Biochem.* 150, 107968. doi: 10.1016/j.soilbio.2020.107968
- Reuter, J. A., Spacke, D. V., and Snyder, M. P. (2015). High-throughput sequencing technologies. *Mol. Cell* 58 (4), 586–597. doi: 10.1016/j.molcel.2015.05.004
- Santoyo, G. (2022). How plants recruit their microbiome? New insights into beneficial interaction. *J. Adv. Res.* 40, 45–58. doi: 10.1016/j.jare.2021.11.020
- Sasse, J., Martinoia, E., and Northen, T. (2018). Feed Your Friends: do plant exudates shape the root microbiome? *Trends Plant Sci.* 23 (1), 25–41. doi: 10.1016/j.tplants.2017.09.003
- Schimel, J. P., and Schaeffer, S. M. (2012). Microbial control over carbon cycling in soil. *Front. Microbiol.* 3, 348. doi: 10.3389/fmicb.2012.00348
- Schindlbacher, A., Schneckler, J., Takriti, M., Borken, W., and Wanek, W. (2015). Microbial physiology and soil CO<sub>2</sub> efflux after 9 years of soil warming in a temperate forest—no indications for thermal adaptations. *Global Change Biol.* 21 (11), 4265–4277. doi: 10.1111/gcb.12996
- Schweitzer, J. A., Bailey, J. K., Fischer, D. G., LeRoy, C. J., Lonsdorf, E. V., Whitham, T. G., et al. (2008). Plant-soil microorganism interactions: heritable relationship between plant genotype and associated soil microorganisms. *Ecology* 89 (3), 773–781. doi: 10.1890/07-0337.1
- Semenov, M. V., Nikitin, D. A., Stepanov, A. L., and Semenov, V. M. (2019). The structure of bacterial and fungal communities in the rhizosphere and root-free loci of gray forest soil. *Eurasian Soil Sci.* 52 (3), 319–332. doi: 10.1134/S1064229319010137
- Singer, E., Bushnell, B., Coleman-Derr, D., Bowman, B., Bowers, R. M., Levy, A., et al. (2016). High-resolution phylogenetic microbial community profiling. *ISME J.* 10 (8), 2020–2032. doi: 10.1038/ismej.2015.249
- Tripathi, B. M., Stegen, J. C., Kim, M., Dong, K., Adams, J. M., and Lee, Y. K. (2018). Soil pH mediates the balance between stochastic and deterministic assembly of bacteria. *ISME J.* 12 (4), 1072–1083. doi: 10.1038/s41396-018-0082-4
- Trivedi, P., Anderson, I. C., and Singh, B. K. (2013). Microbial modulators of soil carbon storage: integrating genomic and metabolic knowledge for global prediction. *Trends Microbiol.* 21 (12), 641–651. doi: 10.1016/j.tim.2013.09.005
- van der Heijden, M. G. A., Bardgett, R. D., and van Straalen, N. M. (2008). The unseen majority: soil microbes as drivers of plant diversity and productivity in terrestrial ecosystems. *Ecol. Lett.* 11 (3), 296–310. doi: 10.1111/j.1461-0248.2007.01139.x
- Visioli, G., Sanangelantoni, A. M., Vamerali, T., Dal Cortivo, C., and Blandino, M. (2018). 16S rDNA profiling to reveal the influence of seed-applied biostimulants on the rhizosphere of young maize plants. *Molecules* 23 (6), 1461. doi: 10.3390/molecules23061461

Vorholt, J. A., Vogel, C., Carlstrom, C. I., and Mueller, D. B. (2017). Establishing causality: opportunities of synthetic communities for plant microbiome research. *Cell Host Microbe* 22 (2), 142–155. doi: 10.1016/j.chom.2017.07.004

Wang, P., Marsh, E. L., Kruger, G., Lorenz, A., and Schachtman, D. P. (2020). Belowground microbial communities respond to water deficit and are shaped by decades of maize hybrid breeding. *Environ. Microbiol.* 22 (3), 889–904. doi: 10.1111/1462-2920.14701

Werth, M., and Kuzyakov, Y. (2008). Root-derived carbon in soil respiration and microbial biomass determined by  $^{14}\text{C}$  and  $^{13}\text{C}$ . *Soil Biol. Biochem.* 40 (3), 625–637. doi: 10.1016/j.soilbio.2007.09.022

Yan, Y., Kuramae, E. E., de Hollander, M., Klinkhamer, P. G. L., and van Veen, J. A. (2017). Functional traits dominate the diversity-related selection of bacterial communities in the rhizosphere. *ISME J.* 11 (1), 56–66. doi: 10.1038/ismej.2016.108

Yang, Y., Wang, N., Guo, X., Zhang, Y., and Ye, B. (2017). Comparative analysis of bacterial community structure in the rhizosphere of maize by high-throughput pyrosequencing. *PLoS One* 12 (5), e0178425. doi: 10.1371/journal.pone.0178425

Zachow, C., Muller, H., Tilcher, R., and Berg, G. (2014). Differences between the rhizosphere microbiome of *Beta vulgaris* ssp. *maritima*-ancestor of all beet crops-and modern sugar beets. *Front. Microbiol.* 5, 415. doi: 10.3389/fmicb.2014.00415