



# Fine-Mapping and Functional Analyses of a Candidate Gene Controlling Isoflavone Content in Soybeans Seed

Ruiqiong Li<sup>††</sup>, Jianan Zou<sup>††</sup>, Dongming Sun<sup>††</sup>, Yan Jing<sup>2</sup>, Depeng Wu<sup>3</sup>, Ming Lian<sup>1</sup>, Weili Teng<sup>1</sup>, Yuhang Zhan<sup>1</sup>, Wenbin Li<sup>1</sup>, Xue Zhao<sup>1\*</sup> and Yingpeng Han<sup>1\*</sup>

<sup>1</sup> Key Laboratory of Soybean Biology in Chinese Ministry of Education (Key Laboratory of Soybean Biology and Breeding/Genetics of Chinese Agriculture Ministry), Northeast Agricultural University, Harbin, China, <sup>2</sup> College of Tropical Crops, Hainan University, Haikou, China, <sup>3</sup> College of Life Science, Huaiyin Normal University, Huaiyin, China

## OPEN ACCESS

### Edited by:

Yuan-Ming Zhang,  
Huazhong Agricultural University,  
China

### Reviewed by:

Hengyou Zhang,  
Northeast Institute of Geography  
and Agroecology (CAS), China  
Mai Tsuda,  
University of Tsukuba, Japan

### \*Correspondence:

Xue Zhao  
xuezhao@neau.edu.cn  
Yingpeng Han  
hyp234286@aliyun.com

<sup>††</sup>These authors have contributed  
equally to this work

### Specialty section:

This article was submitted to  
Plant Breeding,  
a section of the journal  
Frontiers in Plant Science

Received: 30 January 2022

Accepted: 08 March 2022

Published: 25 April 2022

### Citation:

Li R, Zou J, Sun D, Jing Y, Wu D,  
Lian M, Teng W, Zhan Y, Li W, Zhao X  
and Han Y (2022) Fine-Mapping  
and Functional Analyses of a  
Candidate Gene Controlling  
Isoflavone Content in Soybeans Seed.  
*Front. Plant Sci.* 13:865584.  
doi: 10.3389/fpls.2022.865584

Isoflavones, one of the most important secondary metabolites produced by soybeans (*Glycine max* (L.) Merr.), are important for a variety of biological processes, and are beneficial for human health. To identify genetic loci underlying soybean isoflavone content, a mapping population containing 119 F<sub>5:18</sub> recombinant inbred lines, derived by crossing soybean cultivar “Zhongdou27” with “Dongong8004,” was used. We identified 15 QTLs associated with isoflavone contents. A novel loci, qISO19-1, was mapped onto soybean chromosome 19 and was fine-mapped to a 62.8 kb region using a BC<sub>2</sub>F<sub>2</sub> population. We considered *GmMT1* as a candidate gene for the qISO19-1 locus due to the significant positive correlation recovered between its expression level and isoflavone content in the seeds of 43 soybean germplasms. Overexpression of *GmMT1* in *Arabidopsis* and soybean cultivars increased isoflavone contents. Transgenic soybeans overexpressing *GmMT1* also exhibited improved resistance to pathogenic infection, while transgenic *Arabidopsis* resisted salt and drought stress.

**Keywords:** soybean, isoflavone content, quantitative trait loci, *GmMT1*, disease resistance, stress

## INTRODUCTION

Isoflavones, important secondary metabolites commonly known as phytoestrogens, are one of the most highly bioactive flavonoid classes (Wahajuddin et al., 2013). Isoflavones are primarily synthesized *via* the phenylalanine pathway in leguminous plants, and are especially abundant in soybean seeds (Aoki et al., 2000). These metabolites not only play important anti-pathogenic roles in plants (Dixon et al., 2002; Subramanian et al., 2005; Graham et al., 2007; Meng et al., 2011; Zhang et al., 2020), and affect plant resistance to various abiotic stressors (Caldwell et al., 2005; Wu et al., 2008; Gutierrez-Gonzalez et al., 2010; Hamayun et al., 2017), but also benefit human health by reducing the risk of several diseases (Bradbury et al., 2014; Spagnuolo et al., 2015; Malloy et al., 2018). For example, previous studies have showed that soybean isoflavones play an important role in resistance to *Phytophthora sojae* (*P. sojae*) (Subramanian et al., 2005; Graham et al., 2007). Long term water deficit condition limited the isoflavone accumulation in soybean seeds (Gutierrez-Gonzalez et al., 2010). Isoflavone contents significantly increased in leaves and seeds of soybean under salt induction and over-expression of genes involved in isoflavone accumulation could improve soybean tolerance to salt (Jia et al., 2017).

In soybean seeds, isoflavones contain 12 components: daidzein, genistein, glycitein, daidzin, genistin, glycitin, 6-o-acetyldaidzin, 6-o-acetylgenistin, 6-o-acetylglycitin, 6-o-malonyldaidzin, 6-o-malonylgenistin, and 6-o-malonylglycitin; these components are classed as aglycones, glycosides, acetylglycosides, or malonylglycosides (Funaki et al., 2015; Sugiyama et al., 2017). Malonylglycosides are typically the most abundant type of isoflavone in soybean seeds, while aglycones are the least (Sugiyama et al., 2017). Despite their relatively low abundance, aglycone isoflavones (primarily daidzein, genistein, and glycitein) are important in the human body due to their comparatively high phytoestrogen activity and bioavailability (Nielsen and Williamson, 2007). Thus, it is critical to modify isoflavone quantity and composition to increase the relative abundance of aglycone isoflavones in soybean seeds, in order to improve the nutritional qualities of soy-derived foods.

Soybean isoflavone content is greatly influenced by both genetic and environmental factors during seed development (Zhang et al., 2014; Pei et al., 2018; Azam et al., 2020). The most influential environmental factors are climate, planting location, and year-to-year differences; of these, differences among years are the most important (Hoeck et al., 2000; Lee et al., 2003; Zhang et al., 2014). Recently, Azam et al. (2020) used 2 years of data collected for 1168 soybean accessions from three locations in the major ecoregions of soybean production in China to show that isoflavone content differed significantly among soybean accessions, accession types, growth years, and growth ecoregions.

As a typical quantitative trait, isoflavone content is controlled by multiple major and minor genes or quantitative trait loci (QTL); these QTLs are strongly affected by environmental and genetic factors (Primomo et al., 2005; Gutierrez-Gonzalez et al., 2011; Azam et al., 2020). To date, more than 200 QTLs for isoflavones distributed across the 20 soybean chromosomes are available in the SoyBase databank<sup>1</sup>. For example, Li et al. (2014) used a high-density genetic map that included 9948 polymorphic markers to identify 11 QTLs associated with isoflavone concentrations; Akond et al. (2014) identified three QTLs for soybean seed isoflavones using recombinant inbred line (RIL) populations and 5376 single nucleotide polymorphisms (SNPs) from the SoySNP6K BeadChip array (Illumina); and Cai et al. (2018) fine-mapped 15 stable QTLs for both individual and total isoflavone content using a high-density genetic linkage map with 3469 recombinant bin markers. However, with the exception of these few QTLs, most of the available isoflavones-related QTLs were obtained using lower-density genetic maps and do not overlap well. Because marker-assisted selection (MAS), which is based on QTLs, is a useful method by which to cultivate soybean varieties with high or low isoflavone concentrations (Akond et al., 2014), additional high-density genetic maps, containing abundant markers that cover the whole soybean genome, are still needed to identify the QTLs or genes most highly associated with isoflavone concentrations.

Therefore, in this study, we aimed to identify and fine-map a locus associated with soybean isoflavone concentration using a high-density genetic map with 2647 bin makers constructed by

119 RILs. We then aimed to isolate the candidate gene at this locus, and verify its association with isoflavone concentration using genetic transformation assays. Finally, we aimed to preliminarily investigate the roles of the candidate gene in response to abiotic and biotic stressors, including salt, drought, and pathogen infection.

## MATERIALS AND METHODS

### Mapping Population Construction

Two soybean accessions, “Zhongdou27” with high isoflavone content and “Dongong8004” with low isoflavone content, were crossed to develop RILs, using the single seed descent (SSD) method (Oldach et al., 2014). An expanded population with 119 F<sub>5:18</sub> families was derived and used to construct a linkage map and detect the QTLs associated with isoflavone content.

For fine-mapping of the identified QTL (qISO19-1), a BC<sub>2</sub>F<sub>3</sub> population of 500 lines was constructed by backcrossing “Zhongdou27” (donor parent) and “Dongnong8004” (receptor parent). Heterozygosity at qISO19-1 was detected using recurrent selection in the BC<sub>2</sub>F<sub>2</sub> population, and isoflavone contents were measured in the BC<sub>2</sub>F<sub>3</sub> seeds produced by selected BC<sub>2</sub>F<sub>2</sub> plants.

### Field Experiments

In preliminary experiments, “Zhongdou27” (male parent) and “Dongnong8004” (female parent) were planted in chernozem soils in Xiangyang (45°72' N, 126°68' E) and Hulan (45°9' N, 126°58' E) to confirm differences in isoflavone content. Subsequently, the RIL population was planted in Xiangyang and Hulan in 2018. For fine mapping, the BC<sub>2</sub>F<sub>3</sub> population (as a transient generation) was planted in Xiangyang only (latitude 45°80' N, 126°53' E) in 2019. For candidate identification, a set of soybean germplasms consisting of 43 accessions were planted at Xiangyang in 2019 (**Supplementary Table 1**). Field trials were conducted in single-row plots (between 3 m long and 0.65 m rows) using a randomized complete block design, with three replicates per tested environment. Field management practices were typical, and were identical across environments. From all soybean materials, 20 seeds were collected from three plants per plot for isoflavone content measurement at the R8 stage (full maturity).

### Evaluation of Soybean Seed Isoflavone Content

Isoflavone contents in the seeds collected from the parental lines, the RILs, the BC<sub>2</sub>F<sub>3</sub> population, and 43 soybean germplasms were measured using high-performance liquid chromatography (HPLC) as described previously (Vyn et al., 2002; Zeng et al., 2009). Briefly, 20 seeds from each soybean line were ground into a powder. Isoflavones were extracted by adding 0.1 g of this powder to 10 mL of 80% (v/v) ethanol in a 15 mL falcon tube. The mixture was slowly vortexed for 1 h and then left overnight. Next, the extraction mixture was hydrolyzed using 2 mL HCl solvent (2 mol/L). The mixture was filtered through a nylon membrane filter (0.22 μm; Thermo Fisher Scientific, United States), and

<sup>1</sup>www.soybase.org

isoflavone content was measured in 1.5  $\mu$ l of the filtrate using an HPLC (1290 Infinity II; Agilent, United States) with reversed-phase HPLC columns (ZORBAX SB-C18, Agilent, United States; 4.6 mm  $\times$  250 mm; 5  $\mu$ m). Solvent A was double-distilled water (ddH<sub>2</sub>O), and solvent B was methanol (chromatographic purity). The ratio of solvent A to solvent B ratio was 1:1, the solvent flow rate was 0.8 mL/min, and the temperature of the column was maintained at 50°C. Using an Agilent 1290 DAD detector, UV spectra were measured at 254 nm, and area responses were integrated using Agilent OpenLAB Control Panel software. The three major isoflavone components (daidzein, genistein, and glycitein) were identified and quantified based on standards purchased from the Chengdu Manster Biotechnology Co., Ltd. (China). Total isoflavone content was equivalent to the sum of the daidzein, genistein, and glycitein contents.

## Genotyping and Linkage Map Construction

Genomic DNA for the RIL population and the parental lines were prepared as described by Qi et al. (2014). Sequencing libraries for these samples were constructed and sequenced on an Illumina HiSeq2500 sequencing platform, following the manufacturer's instructions. The sequencing reads for the RIL population and the parental lines were aligned to the soybean reference genome (assembly Glycine\_max\_v2.1) (Schmutz et al., 2010) using Short Oligonucleotide Alignment Program 2 (SOAP2) (Li et al., 2009). GATK (McKenna et al., 2010) was used to identify polymorphic SNPs between the RIL population and the parental lines.

Co-segregating SNPs were separated into bins, and a bin map was constructed based on the recombinant breakpoints of the RIL population with HighMap (Liu et al., 2014). Genetic distances among markers were calculated using the Kosambi mapping function (Kosambi, 1944). Linkage groups were discriminated at a log-likelihood threshold of 3.0. QTL mapping was performed using IciMapping v4.1 (Meng et al., 2015). Putative QTLs were identified based on LOD threshold of 2.5.

## Fine Mapping of qISO19-1

We used 500 lines in the BC<sub>2</sub>F<sub>3</sub> family to construct a local saturation map within qISO19-1 based on SSR markers. The SSR primers used for fine-mapping are given in **Supplementary Table 2**. We measured isoflavone contents in the seeds produced by these lines as described above. Recombinants were identified in the fine-mapping population based on 12 polymorphic SSR markers, and the QTLs significantly associated with isoflavone content (LOD > 2.5) were identified using IciMapping v4.1 (Meng et al., 2015). Student's *t*-test was used to identify significant differences between lines of BC<sub>2</sub>F<sub>3</sub> with high and low content of isoflavone in soybean seed.

## Quantitative Real-Time PCR

For candidate gene identification, seeds of the 43 soybean germplasm described above were sampled at the R7 stage (yellow ripening stage); three replicate seeds were collected per accession for RNA extraction and isoflavone content measurement, to determine the correlation between isoflavone content and transcript abundance.

To analyze the relative expression dynamics of *GmMT1* between high- and low- isoflavone soybean cultivars, developing seeds of “Zhongdou27” and “Dongnong8004” were sampled every 7 days from developmental stage R5 to R8 (three replicate seeds per cultivar were sampled at every time point). Plants were grown in a greenhouse under a 16 h light/8 h dark photoperiod at 25–26°C until sampling.

To determine the involvement of *GmMT1* in the stress response, “Zhongdou27” was exposed to drought and salt stress. First, the roots of 3 week old “Zhongdou27” seedlings were immersed in quarter-strength (1/4) Murashige and Skoog (MS) liquid medium. We then supplemented the MS media of five seedlings with 150 mM NaCl, and the MS media of five seedlings with 8% (w/v) PEG6000 for the salt- and drought-stress response tests, respectively. The remaining five seedlings were kept in unsupplemented MS media as controls. Half of the uppermost fully extended leaf per seedling was sampled at 0, 1, 2, 4, 6, 8, 12, and 24 h after supplementation. During this period, plants were maintained in a greenhouse under a 16 h light/8 h dark photoperiod at 25–26°C. Harvested leaves were immediately frozen in liquid nitrogen and stored at –80°C. Leaves from three of the five treated plants were used for qRT-PCR.

qRT-PCRs were performed to determine the transcript abundance of *GmMT1* in soybean seeds or leaves. Total RNA was isolated from leaves or seeds using RNAPrep pure Plant Kits (DP432, Tiangen). First-strand cDNA was synthesized from total RNA using TIANScript RT Kits (KR104, Tiangen). qRT-PCRs were performed on an ABI 7500 Fast platform using SuperReal PreMix Plus (SYBR Green) Kits (FP205, Tiangen). Each qRT-PCR (20  $\mu$ l) included 2  $\mu$ l cDNA, 10  $\mu$ l 2  $\times$  SuperReal PreMix Plus, 0.4  $\mu$ l 50  $\times$  ROX Reference Dye<sup>A</sup>, 5  $\mu$ l of each forward and reverse primer, and 6.6  $\mu$ l ddH<sub>2</sub>O<sub>2</sub>. The qRT-PCR amplification conditions were 95°C for 2 min, followed by 40 cycles of 95°C for 10 s, 60°C for 30 s, and 72°C for 30 s. The primers used are given in **Supplementary Table 3**. Three technical replicates were performed per sample, and the relative levels of transcript abundance were calculated using the 2<sup>– $\Delta\Delta$ CT</sup> method (Livak and Schmittgen, 2001). The housekeeping gene *GmActin4* (GenBank accession no. AF049106) was used as the internal standard. Student's *t*-test was used to identify significant differences in transcriptional abundance of *GmMT1*.

## GmMT1 Cloning, Sequence Analysis, and Vector Construction

We predicted the 3-D structure of the putatively encoded protein GmMT1 using Phyre 2 (Kelley et al., 2015). We identified DNA and protein sequences homologous to *GmMT1* in soybeans and 15 other plant species in the Phytozome database<sup>2</sup>. We aligned these methyltransferases using DNAMAN (version 7.212, Lynnon Corp., QC, Canada). We then constructed a phylogenetic tree based on this alignment in MEGA 5 (Tamura et al., 2011).

The full-length cDNA sequence of *GmMT1* was amplified from the developing seeds of the high-isoflavone cultivar “Zhongdou27” using RT-PCR. RT-PCRs were performed using the KOD One PCR Master Mix (Code No. KMM-201; Toyobo (Shanghai) Biotech Co., Ltd., China), following the

<sup>2</sup><https://phytozome.jgi.doe.gov/pz/portal.html>



manufacturer's instructions. The primers used were *GmMT1-F* and *GmMT1-R*, which were designed based on sequences flanking *GmMT1* in the Phytozome database (Goodstein et al., 2012), with the 5' ends modified to include *Bgl*II and *Bst*EII restriction sites (Supplementary Table 3). The RT-PCR cycling conditions were as follows: 5 min at 94°C; 35 cycles of 30 s at 94°C, 30 s at 60°C, and 45 s at 72°C; and a final 10 min at 72°C. The purified PCR products were ligated into the pGM-T vector (VK207, Tiangen). Positive clones expressing the correct sequence were further inserted into pCAMBIA3301 vector using double digestion and ligation. The *bar* gene was used as a selection marker in the pCAMBIA3301 vector. Two expression vectors (35S:*GmMT1* or 35S:*bar*) were constructed for transformation using the recombinant pCAMBIA3301 plasmid.

### Subcellular Localization of *GmMT1*

The full-length coding region of *GmMT1* was inserted into the pCAMBIA1302 vector under the control of the 35S promoter to generate a GFP-fused *GmMT1* vector (35S:*GmMT1-GFP*). This recombinant vector and the control vector (35S:*GFP*) were transfected into separate groups of *Arabidopsis* protoplasts following Yoo et al. (2007). The transfected cells were examined and imaged under a confocal laser scanning microscope (DMi8, Leica, China). The primer sequences *GmMT1-GFP-F* and *GmMT1-GFP-R* were used for subcellular localization (Supplementary Table 3).

### Plant Transformation

To verify that *GmMT1* expression was associated with isoflavone content in soybeans, we overexpressed this gene in *Arabidopsis* and soybean plants. We selected "Dongnong50," a low-isoflavone soybean cultivar, and *A. thaliana* Col-0 as the recipients of genetic transformation. The *A. thaliana* Col-0 mutant SALK\_012168C was obtained from the *Arabidopsis* Biological Resource Center (ABRC). Transgenic soybean plants were grown in a greenhouse under a 16 h light/8 h dark photoperiod at 25–26°C; T0–T3 transgenic *Arabidopsis* plants were grown in a growth chamber with a photoperiod cycle of 16 h light/8 h dark at 22°C.

To develop transgenic *Arabidopsis*, the 35S:*GmMT1* construct was transferred into *Agrobacterium tumefaciens* EHA105, and then transformed into two *Arabidopsis* strains (the Col-0 ecotype and the *mt1* mutant) using on the floral dip method (Clough and Bent, 1998). Transgenic *Arabidopsis* lines were selected using phosphinothricin; *bar* and *GmMT1* gene expression in the selected plants was verified by PCR amplification using specific primers (3301-*bar-F/R* and 3301-35S-*GmMT1-F/R*; Supplementary Table 3). We generated three independent T2 transgenic lines per strain. Isoflavone concentrations in the T2 transgenic plants were measured using HPLC as described above. T2 transgenic plants with no separation were used in subsequent experiments.

To test whether *GmMT1* overexpression increased isoflavone production in the roots of low-isoflavone soybean cultivars, the 35S:*GmMT1* recombinant plasmid was transformed into *Agrobacterium rhizogenes* strain K599, and transformed in to the hairy roots of cultivar Donong50 as previously described (Cao et al., 2009). After 2 weeks of cultivation, once the hairy roots had

appeared, we removed ~1 cm sections from the root tips of 205 plants. Using PCR and specific primers (3301-*bar-F/R* and 3301-35S-*GmMT1-F/R*; Supplementary Table 3), we confirmed *bar* and *GmMT1* gene expression in roots. Isoflavone concentrations in the transgenic roots were measured as described above.

To determine whether the expression of *GmMT1* influenced isoflavone content in soybean seeds, we then developed transgenic soybeans by introducing the recombinant plasmid into *Agrobacterium tumefaciens* strain EHA105, and performing stable transformation into the cotyledon nodes of soybean cultivar "Dongnong50" following Paz et al. (2004). The expression of *GmMT1* in leaves of T2 transgenic soybean plants was verified using PCR amplification (3301-*bar-F/R* and 3301-35S-*GmMT1-F/R*) (Supplementary Table 3), western blotting, and qRT-PCR. Isoflavone concentrations in seeds of the T2 transgenic plants were measured as described above. T2 plants expressing *GmMT1* were used for all subsequent experiments.

### Effects of Stress on Transgenic Plants

We tested the effects of salt and drought stress on the transgenic *Arabidopsis* and soybean plants. To test the effects of salt and drought on *Arabidopsis*, we planted wild-type (Col-0), *mt1* mutant, and T3 transgenic (*GmMT1-ox* and *GmMT1-ox mt1*) *Arabidopsis* on MS agar plates (five plates per strain). We then treated three plates per strain with 100 mM NaCl, and three plates per strain with 300 mM mannitol. The remaining untreated plates were used as controls. All plants were kept at 4°C for 3 days in the dark, and then transferred to a 22°C environment with a photoperiod cycle of 16 h light/8 h dark. We calculated the germination rate on the 4th day after treatment and measured the root growth of all plants using a Vernier caliper.

To explore whether isoflavone accumulation, driven by *GmMT1* overexpression, improved soybean resistance to *P. sojae*, we measured *GmMT1* transcript abundance in transgenic and wild-type hairy roots, as well as the reaction of transgenic and wild-type hairy roots to *P. sojae* infection. Before *P. sojae* infection, we removed ~1 sections from the hairy root tips of wild-type and *GmMT1*-overexpressing "Donong50" that had been cultured for 15 days. The relative expression levels of *GmMT1* were detected in these samples. Then, to test the effects of *P. sojae* infection, well-propagated cultures of *P. sojae* were cut into small pieces and placed on new carrot agar (CA) plates. The hairy roots were spread on the CA medium with the mycelia, and were cultured in a growth chamber under a 16 h light/8 h dark cycle at 25°C. After ~14 days of incubation, once the hairy roots had appeared, we imaged the hairy roots to check for signs of infection.

## RESULTS

### Phenotypic Evaluation of the Recombinant Inbred Line Populations

Two soybean varieties (*Glycine max* (L.) Merr), one with high isoflavone content ("Zhongdou27"), and one with low isoflavone content ("Dongnong8004"), were planted in two locations *GmMT1* Effects Soybean Isoflavone Content (Xiangyang and

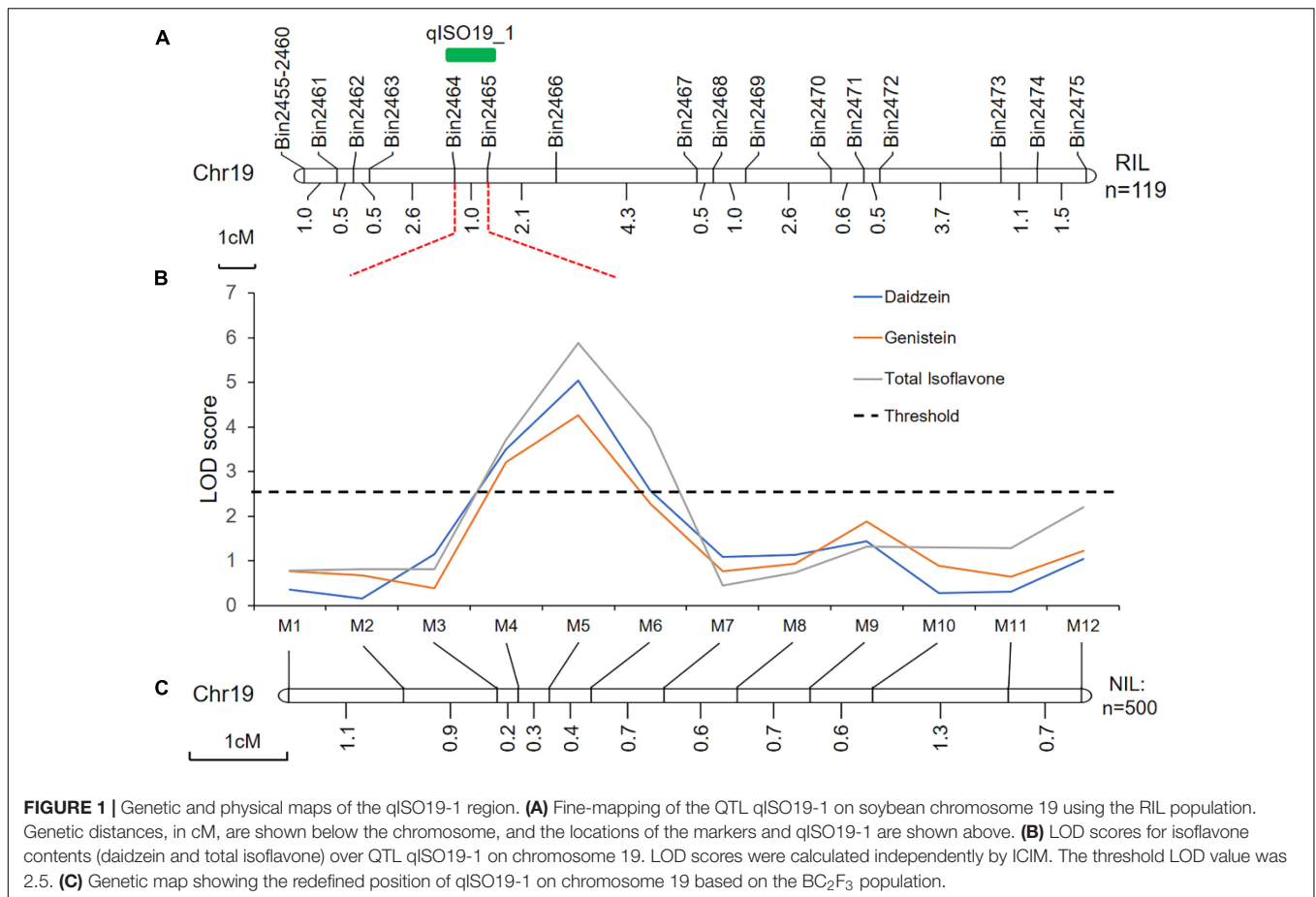
**TABLE 1** | Quantitative trait loci underlying soybean isoflavone content in two environments.

Chromosome	QTL	Left marker	Right marker	Position	Trait <sup>a</sup>	LOD	R <sup>2</sup> (%)	Add	Novel or previously reported QTL
01	qGC1-1	Bin2	Bin3	90	GC_e1	2.89	7.92	-92.502	Novel
					GC_e2	3.04	8.23	-124.663	
01	qGC1-2	Bin89	Bin90	38	GC_e2	3.25	10.21	-93.461	Novel
02	qISO2-1	Bin156	Bin157		DZ_e1	3.18	9.16	-238.4209	Novel
					DZ_e2	4.06	11.02	-162.3418	
					GT_e1	3.58	9.23	-147.9449	
					TI_e1	4.51	12.39	-334.3811	
					TI_e2	3.76	10.97	-269.3571	
03	qTI3-1	Bin324	Bin325	5	TI_e1	3.45	11.09	301.1243	Seed isoflavone 4-2 (Liang et al., 2010)
					TI_e2	4.06	13.28	124.4489	
05	qISO5-1	Bin713	Bin717	99	DZ_e1	2.79	9.29	-225.5618	Novel
					DZ_e2	3.52	11.08	-162.4358	
					TI_e2	4.5	13.28	-220.8508	
08	qISO8-1	Bin1088	Bin1092	68	DZ_e1	2.65	9.08	-119.1458	Novel
					GT_e1	4.21	12.09	-150.1215	
					GT_e2	3.68	10.21	-153.7711	
					TI_e1	3.96	11.29	-331.0842	
08	qTI8-1	Bin1126	Bin1128	23	TI_e1	2.89	8.19	-123.1042	Seed total isoflavone 9-1 (Wang et al., 2015)
					TI_e2	4.82	12.09	-260.4606	
08	qISO8-2	Bin1140	Bin1141	5	DZ_e1	2.79	8.92	-123.6876	Novel
					DZ_e2	3.02	9.08	-126.9897	
					GT_e2	2.57	7.89	146.395	
					TI_e1	3.54	10.29	-307.761	
					TI_e2	5.63	19.27	-340.2377	
10	qISO10-1	Bin1383	Bin1384	87	DZ_e1	3.02	9.74	213.2513	Novel
					DZ_e2	2.59	7.95	157.2833	
					TI_e1	3.17	10.09	138.9982	
13	qISO13-1	Bin1733	Bin1734	93	DZ_e1	2.54	8.65	175.3847	qIF13-1(Cai et al., 2018)
					DZ_e2	3.07	9.34	163.4374	
					TI_e1	2.89	8.15	221.7404	
					TI_e2	3.28	10.79	356.7454	
13	qISO13-2	Bin1839	Bin1840	41	DZ_e1	3.59	10.14	-131.2053	Novel
					DZ_e2	3.87	9.87	-126.7739	
					GT_e2	2.55	8.74	-130.2816	
					TI_e2	3.41	11.02	-332.4529	
14	qISO14-1	Bin1964	Bin1967	35	DZ_e2	3.54	10.09	-177.8066	Novel
					GT_e1	2.78	9.08	-162.1882	
					GT_e2	3.05	9.76	-117.5672	
					TI_e2	2.57	8.59	-113.9187	
19	qISO19-1	Bin2464	Bin2465	78	DZ_e1	2.87	10.96	-122.8813	Novel
					DZ_e2	2.65	10.29	-129.4217	
					GT_e1	3.04	12.19	-144.6579	
					TI_e1	4.05	14.48	-307.761	
19	qISO19-2	Bin2470	Bin2471	67	DZ_e1	3.41	13.04	-128.4985	Novel
					TI_e1	3.06	11.49	-110.1879	
20	qISO20-1	Bin2581	Bin2586	43	DZ_e1	2.97	10.29	-178.9113	Novel
					DZ_e2	3.54	14.87	-180.2642	
					TI_e1	3.02	12.09	-238.4209	

<sup>a</sup>e1 and e2 indicate two experimental locations "Xiangyang" and "Hulan," respectively.

Hulan, China) to verify the difference in isoflavone content between the accessions. In both locations, isoflavone content was significantly higher in "Zhongdou27" than in "Dongnong8004" ( $P < 0.001$ ) (**Supplementary Table 4**). Thus, these accessions

were suitable for map-based QTL analysis. We therefore crossed "Zhongdou27" (male parent) with "Dongnong8004" (female parent) to derive an RIL mapping population of 119 F<sub>5:18</sub> families. When the RIL were planted in Xiangyang and Hulan,



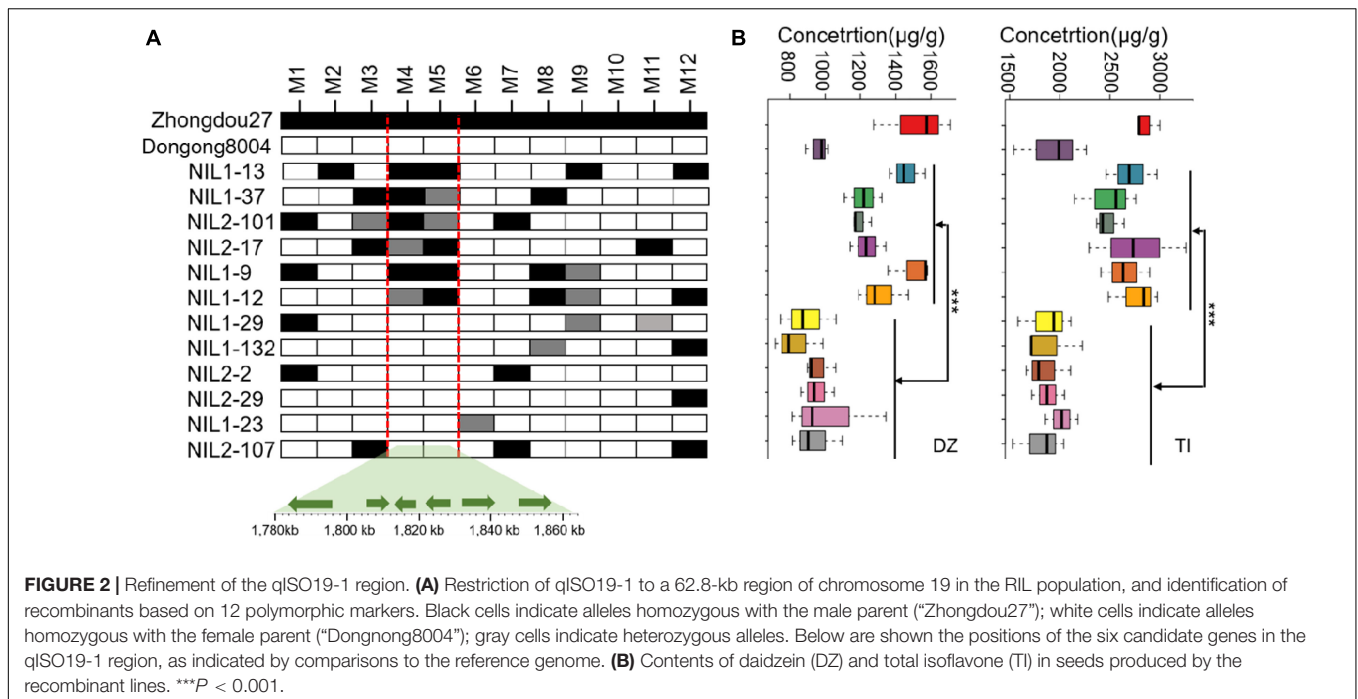
isoflavone contents varied widely with location and population. Across the RIL population, total isoflavone content ranged from 1211.99  $\mu\text{g/g}$  to 5683.43  $\mu\text{g/g}$  (**Supplementary Table 4**). All traits of interest (i.e., total isoflavone content and content of each individual isoflavone) were continuously distributed (**Supplementary Figure 1**).

## Quantitative Trait Loci Mapping for Soybean Isoflavone Content

Genome resequencing was conducted to genotype the parental lines (“Zhongdou27” and “Dongnong8004”) and the 119 RILs in the mapping population. For “Zhongdou27,” we generated 26.18 GB of raw data, and 78.88% of the reads were successfully aligned to the soybean reference genome with an average depth of 24.54-fold; for “Dongnong8004,” we generated 25.58 GB of raw data, and 78.30% of the reads were successfully aligned to the soybean reference genome with an average depth of 22.86-fold (**Supplementary Table 5**). A total of 343,907 high-quality SNPs were identified between the two parents. Across all RILs, we generated 441.7 GB of raw data, with an average sequencing depth of 3.65-fold. For each of the 119 RILs, we generated an average of 3.46 GB of raw data (**Supplementary Table 5**). A total of 353 million SNPs were identified among the 119 RILs; all SNP sites in the RILs were

integrated as recombination bin units. Finally, a genetic linkage map with 4231 bin markers was constructed along the 20 chromosomes (**Supplementary Table 6**). The total length of the bin map was 2172.98 centimorgans (cM), with a mean interval between markers of 0.82 cM (**Supplementary Figure 2** and **Supplementary Table 6**).

Using linkage mapping, we identified 15 QTLs associated with daidzein (DZ), genistein (GC), glycitein (GT), and total isoflavone contents (TI), covering 10 of the 20 soybean chromosomes. Almost all QTLs were detected in both locations (Xiangyang and Hulan) or as multiple-effect QTLs, controlling the abundance of two or more isoflavones; the one exception was QTL qGC1-2, which was only associated with glycitein content in seeds from plants grown in Xiangyang (**Table 1** and **Supplementary Figure 3**). Four of the 15 QTLs have been previously reported (**Table 1**). The remaining 11 QTLs were novel (**Table 1**). One novel locus, qISO19-1, which was detected between markers Bin2464 and Bin2465 on chromosome 19, was identified both by the inclusive composite interval mapping method (ICIM) (**Figure 1A** and **Table 1**). This QTL controlled the contents of daidzein, genistein, and total isoflavone (**Figure 1B** and **Table 1**). The genetic contribution of this QTL to each of these traits was more than 10%, indicating that qISO19-1 was an important QTL controlling individual and total content of soybean isoflavone. Thus, we selected qISO19-1 for further study.



## Fine Mapping of qISO19-1 and Candidate Gene Mining

Quantitative trait loci qISO19-1 was fine-mapped using 75 simple sequence repeat (SSR) markers near qISO19-1 (between markers Bin2464 and Bin2465; **Figure 1A**). Of these SSR markers, 12 (M1–M12) were polymorphic between the parental lines, as well as within the BC<sub>2</sub>F<sub>3</sub> population. The local saturation map of qISO19-1 for daidzein and total isoflavone contents showed that the logarithm of the odds (LOD) scores were above the threshold from M4 (SSR\_19\_0116) to M5 (SSR\_19\_0123) (**Figures 1B,C**). Within the fine-mapped population, we identified five recombinants that were homozygous for “Dongong8004” alleles at M4 and M5, and five recombinants that were homozygous or heterozygous for the “Zhongdou27” at these alleles (**Figure 2A**). Levels of daidzein and total isoflavone in the seeds produced by the lines carrying the “Zhongdou27” alleles were significantly higher ( $P < 0.001$ ) than those produced by the lines carrying the “Dongong8004” alleles (**Figure 2B**). Thus, the qISO19-1 QTL was narrowly defined to a 62.9-kb region between markers SSR\_19\_0116 and SSR\_19\_0123 on chromosome 19. Based on comparisons with the reference genome (*G. max* Williams 82) (Schmutz et al., 2010), this interval harbors five putative genes (**Figure 1A**): *Glyma.19G017200*, *Glyma.19G017300*, *Glyma.19G017400*, *Glyma.19G017500*, and *Glyma.19G017700* (**Supplementary Table 7**).

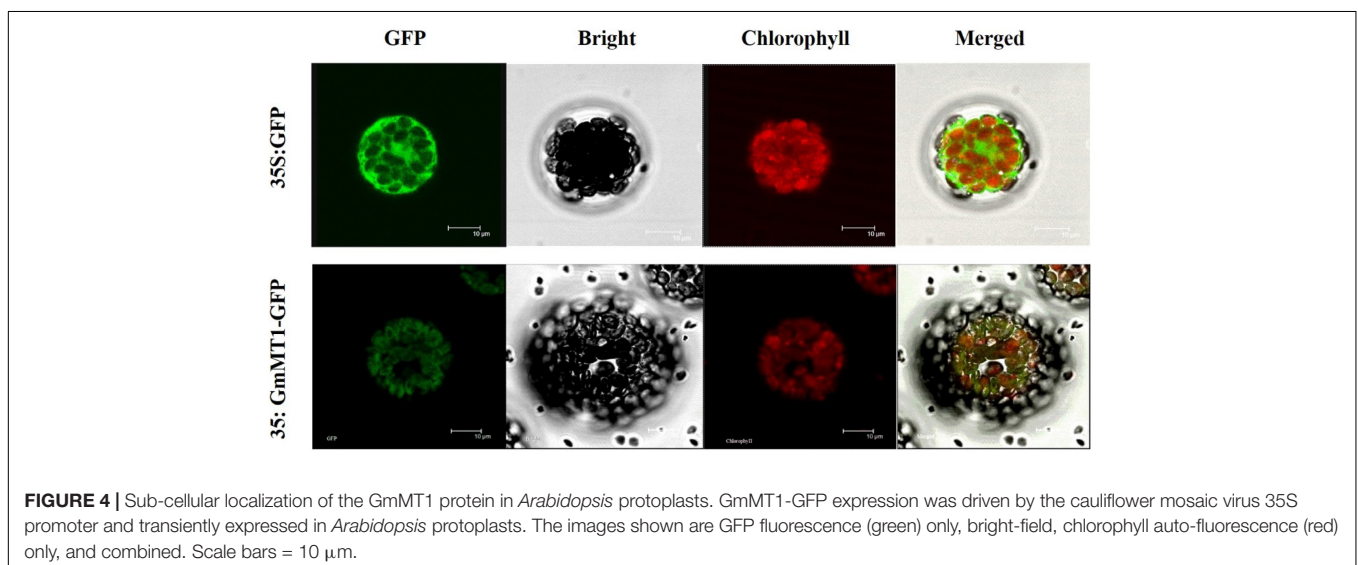
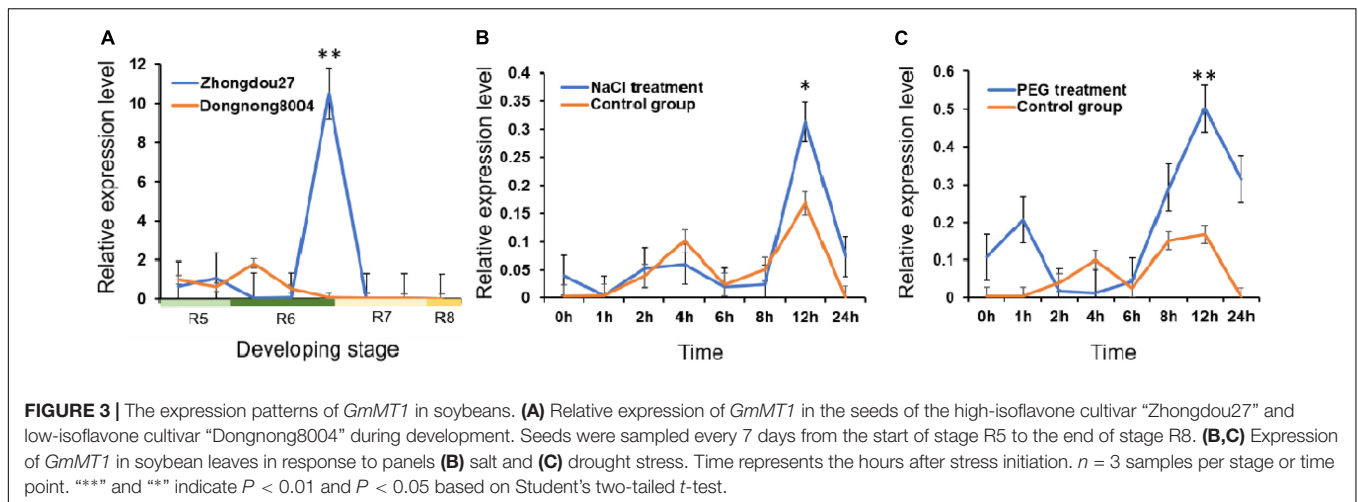
Relative expression levels of these five genes were quantified for 43 soybean germplasms: 20 germplasms with high isoflavone content (3709–5970 µg/g) and 23 germplasms with low isoflavone content (1263–2042 µg/g) (**Supplementary Table 1**). Four genes, *Glyma.19G017200*, *Glyma.19G017300*, *Glyma.19G017400*, and *Glyma.19G017500*, were expressed in the seeds of all accessions during the late R6 stage

(**Supplementary Figure 4**). *Glyma.19G017700* was expressed at a relatively low level in 30 accessions (**Supplementary Figure 4**). The relative expression level of *Glyma.19G017500* was significantly positively correlated with isoflavone content in the seeds of all accessions (**Supplementary Table 8**). Thus, we considered *Glyma.19G017500*, which is a methyltransferase (MT), a candidate gene at the qISO19-1 locus. This gene was named *GmMT1*.

## GmMT1 Sequence Analysis and Localization

The full-length coding sequence (CDS) of *GmMT1* (*Glyma.19G017500*) from the high-isoflavone cultivar “Zhongdou27” was 957 bp long; this sequence was 99.16% consistent with the reference genome (*G. max* Williams 82; Schmutz et al., 2010; **Supplementary Figure 5a**). *GmMT1* encoded a putative protein composed of 318 amino acid with a predicted molecular mass of 35.16 kDa. This protein harbored all 20 amino acids, with the most abundant being leucine and least abundant being tryptophan. The calculated instability and aliphatic indexes of this protein were 51.94 and 89.47, respectively, suggesting that the protein was unstable. The predicted 3-D structure suggested that *GmMT1* encoded an m<sup>2</sup> G966 specific 16S rRNA methyltransferase (Lesnyak et al., 2007; **Supplementary Figure 5b**). Using the Phytozome database (Goodstein et al., 2012), we identified a second copy of *GmMT1* on chromosome 13 (*Glyma.13G066900*); the amino acid sequence putatively encoded by this copy was 82.15% homologous with *GmMT1* (**Supplementary Figure 6**). Phylogenetic analysis of *GmMT1* and several other plant methyltransferases indicated that *GmMT1* formed a well-supported clade with the methyltransferases of *Phaseolus vulgaris*,





*Medicago truncatula*, and *Trifolium pratense* (Supplementary Figure 5c), suggesting that the functions of *MT1* may be conserved across leguminous plants.

### Expression of *GmMT1* in Developing Soybean Seeds and in Response to Stress

At developmental stage R7, *GmMT1* was significantly upregulated in the seeds of the high-isoflavone cultivar “Zhongdou27” as compared to the seeds of the low-isoflavone cultivar “Dongnong8004” (Figure 3A). At all other developmental stages tested, *GmMT1* expression level did not differ between cultivars. However, the stark difference in *GmMT1* expression at stage R7 suggested that this gene may participate in isoflavone accumulation in soybean seeds. *GmMT1* expression was also induced in the high-isoflavone cultivar “Zhongdou27” in response to salt and drought stress (Figures 3B,C). In both cases, *GmMT1* was significantly upregulated at 12 h after stress initiation in comparison to the control group (Figures 3B,C).

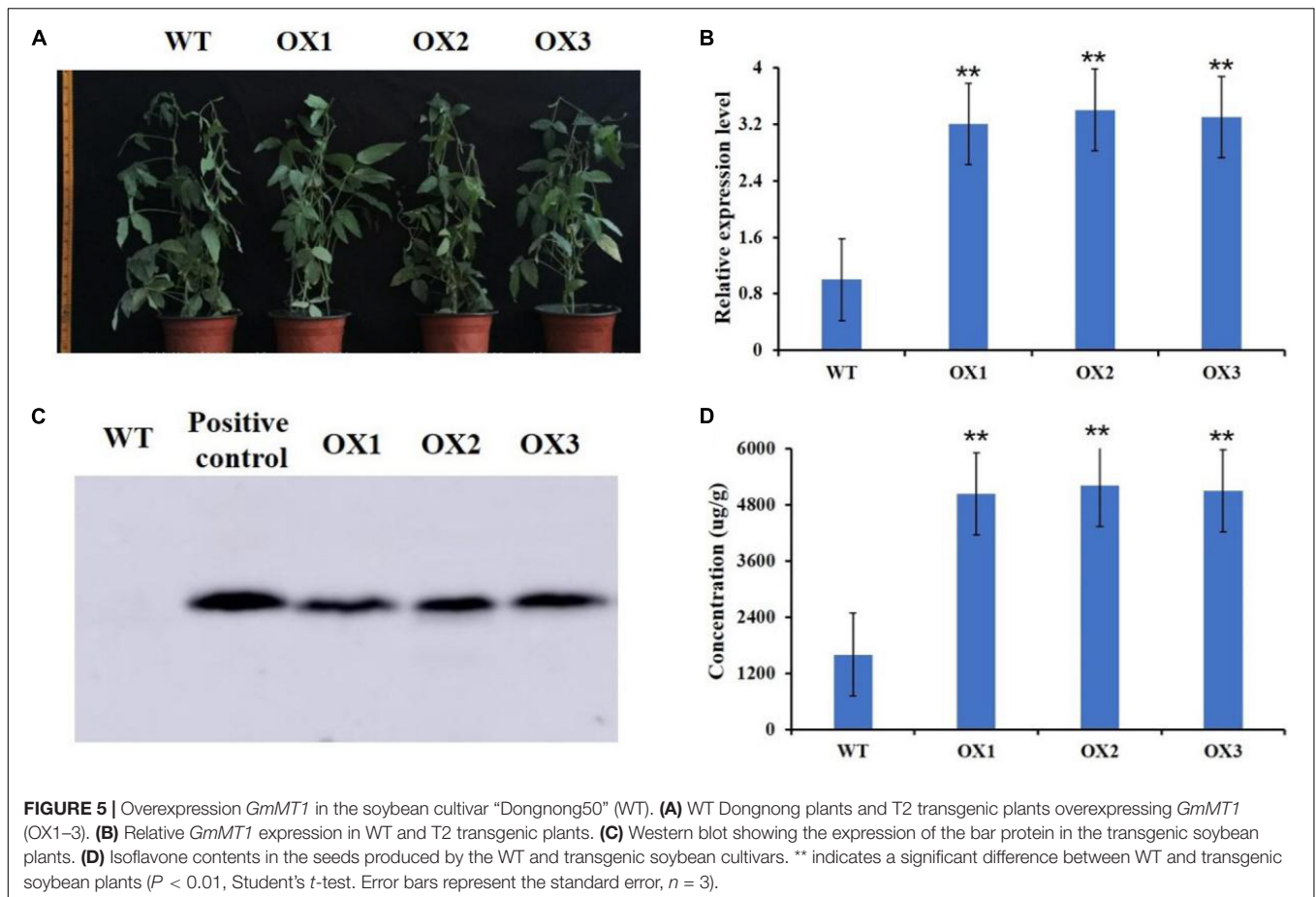
### The *GmMT1* Protein Was Expressed in the Chloroplast

We expressed the green fluorescent protein (GFP) and the *GmMT1*-GFP fusion protein, both under the control of the 35S promoter, in separate *Arabidopsis* protoplasts. In protoplasts carrying 35S:GFP, GFP signal was dispersed throughout the cell (Figure 4). However, in protoplasts carrying 35S:*GmMT1*-GFP, the GFP signal was primarily observed in the chloroplasts (Figure 4), indicating that *GmMT1* was a chloroplast-localized protein.

### Overexpression of *GmMT1* Increased Isoflavone Concentrations in Transgenic Plants

We used *Agrobacterium rhizogenes*-mediated transformation to overexpress *GmMT1* in the hairy roots of soybean cultivar “Donong50,” a low-isoflavone cultivar. In the hairy roots overexpressing *GmMT1* (Supplementary Figures 7a,b), total





isoflavone concentrations were significantly greater than in the wild-type hairy roots (**Supplementary Figure 7c**).

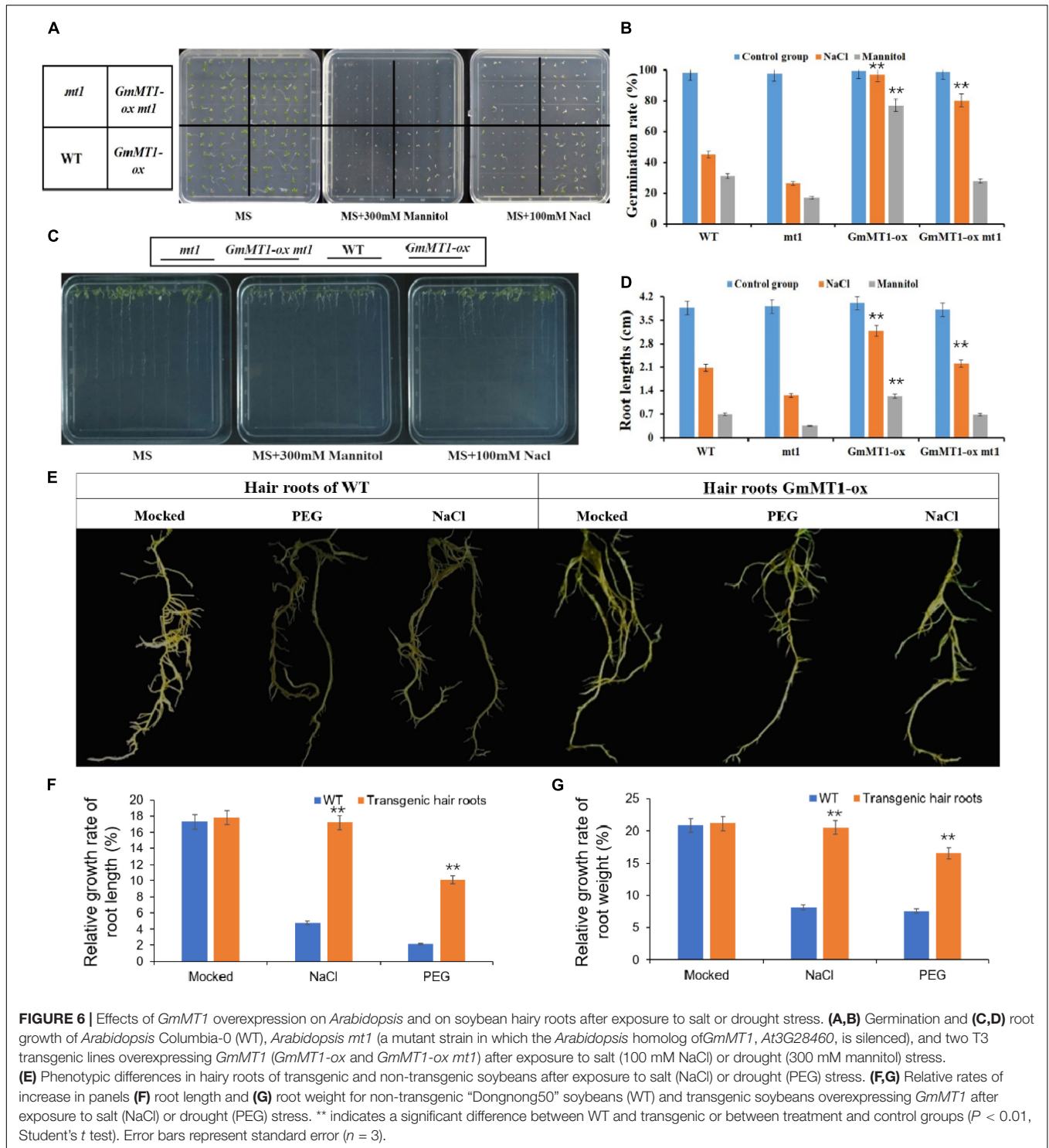
We then used *Agrobacterium tumefaciens*-mediated transformation to co-overexpress *GmMT1* and the selection marker gene *bar* in “Dongnong50,” a low-isoflavone cultivar that is also an excellent transgenic receptor, to generate three independent T2 transgenic soybean lines (**Figure 5A**). In the seeds of the T2 transgenic lines, *GmMT1* was significantly upregulated as compared to non-transgenic “Dongnong50” (**Figure 5B**), and western blots confirmed the expression of the bar protein in the transgenic plants (**Figure 5C**). Isoflavone contents in the seeds of the *GmMT1*-overexpressing T2 transgenic lines were significantly greater than isoflavone contents in the seeds of the wild-type plants (increases of nearly 3.0-fold; **Figure 5D**). Thus, our results suggested that *GmMT1* expression might be associated with isoflavone biosynthesis in both soybeans and *Arabidopsis*.

### ***GmMT1* Overexpression Improved *Arabidopsis* Resistance to Salt and Drought**

Using *Agrobacterium*-mediated transformation, we overexpressed *GmMT1* in wild-type *Arabidopsis thaliana* Columbia-0 (Col-0) and in *A. thaliana mt1*, a mutant strain

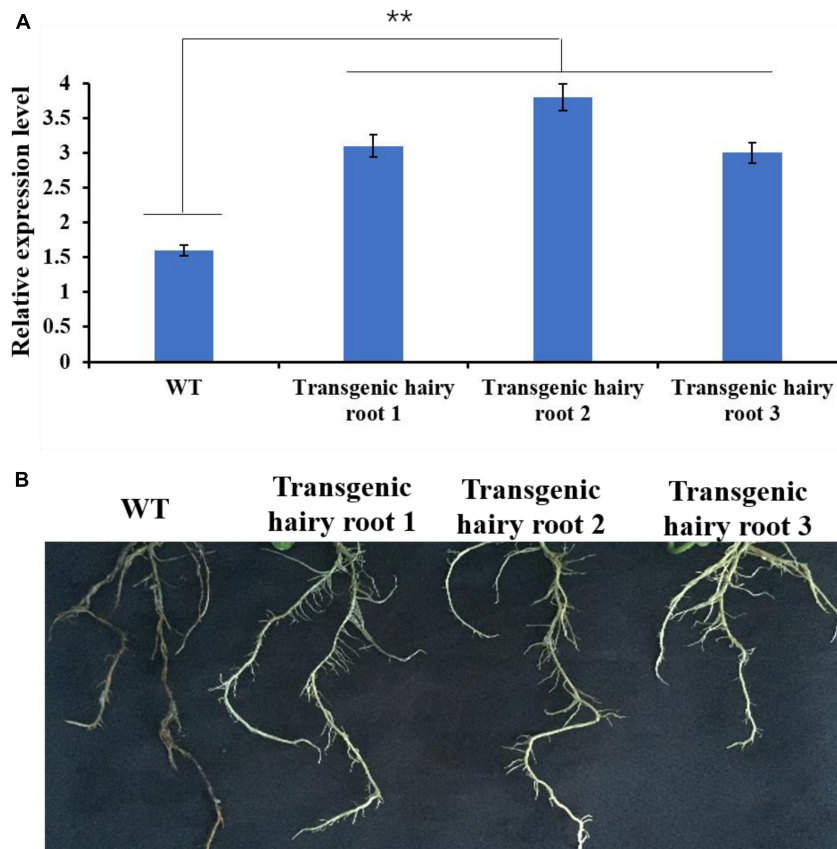
in which the *Arabidopsis* homolog of *GmMT1* (At3G28460) was silenced, to generate *GmMT1-ox* and of *GmMT1-ox mt1*; three independent T3 lines of each transgenic strain were generated (**Supplementary Figures 8a–c**). Under control conditions, germination rate did not differ among wild-type (Col-0), *mt1* mutant, and T3 transgenic (*GmMT1-ox* and *GmMT1-ox mt1*) *Arabidopsis* seeds (**Figures 6A,B**). When exposed to salt or drought stress, seed germination rate in the wild-type and the *mt1* mutant decreased significantly (**Figures 6A,B**). In the *GmMT1-ox* plants, seed germination rate decreased in response to both salt and drought stress (significantly in the latter case), but remained significantly greater than those in stressed non-*GmMT1*-overexpressing plants (**Figures 6A,B**). In contrast, in *GmMT1-ox mt1* plants, seed germination rates decreased significantly in response to both salt and drought stress, and seed germination was significantly greater than stressed non-*GmMT1*-overexpressing plants after salt stress, but not drought stress (**Figures 6A,B**). Root growth measurements returned similar results to the seed germination assays. That is, after salt or drought stress, the roots of transgenic wild-type and *mt1* *Arabidopsis* plants were longer than those of plants not overexpressing *GmMT1* (**Figures 6C,D**).

The relative growth rates of the hairy roots of low-isoflavone soybean cultivar Donong50 decreased significantly



with respect to both length and weight after exposure to drought or salt stress (Figures 6E–G). However, the hairy roots of transgenic Donong50 overexpressing *GmMT1* were significantly more tolerant of drought and salt stress (Figures 6E–G). Indeed, as compared to the non-transgenic cultivar, relative rates of root length

and weight increase in the transgenic cultivar were respectively 12.13% and 11.78% greater after salt stress, and respectively 7.91% and 9.15% greater after drought stress (Figures 6E–G). Thus, *GmMT1*-driven increases in isoflavone concentrations might increase the resistance of plants to salt and drought stress.



**FIGURE 7 |** The effects of *GmMT1* overexpression on *Phytophthora sojae* resistance. **(A)** The relative expression levels of *GmMT1* in non-transgenic low-isoflavone soybean cultivar Donong50 (WT) and three transgenic Donong50 lines overexpressing *GmMT1*. \*\* indicates a significant difference between WT and transgenic hairy roots ( $P < 0.01$ , Student's *t*-test). **(B)** Phenotypic differences in hairy roots of transgenic and non-transgenic soybeans after *P. sojae* infection.

## GmMT1 Overexpression Improved Soybean Resistance to *Phytophthora sojae*

Under control (uninfected) conditions, *GmMT1* was significantly more highly expressed in the three transgenic Donong50 lines overexpressing *GmMT1* than in the non-transgenic low-isoflavone soybean cultivar Donong50 (**Figure 7A**). Correspondingly, the symptoms of *P. sojae* infection, including watery and rotting lesions, were less obvious in the transgenic hairy roots as compared to the non-transgenic hairy roots after 2 weeks of treatment (**Figure 7B**). Thus, our results indicated that the overexpression of *GmMT1* might increase the resistance of soybeans to *P. sojae* infection, and/or reduce the severity of the infection.

## DISCUSSION

Quantitative trait loci mapping is the most common and effective method used to analyze agronomically important plant characteristics (Pulst, 1999; Rafalski, 2010). Soybean isoflavone content is a quantitative trait, controlled by multiple genes, which is easily affected by the environment (Zeng et al., 2009). Here,

we identified 15 QTLs underlying soybean isoflavone content, of which three overlapped with previously reported QTLs in genomic regions. Of these three QTLs, qTI3-1 overlapped with the reported QTL “Seed isoflavone 4-2” associated with soybean isoflavone content (Liang et al., 2010); qTI8-1 occupied a similar genomic region to the reported QTL “Seed total isoflavone 9-1” (Wang et al., 2015); and qISO13-1 overlapped with the known QTL “qIF13-1” (Cai et al., 2018).

Using the 12 novel QTLs, we fine-mapped the important stable locus qIF19-1, and identified *GmMT1* as a candidate gene associated with isoflavone content at this locus.

*GmMT1* encodes an m<sup>2</sup> G966-specific 16S rRNA methyltransferase, which falls into the S-adenosyl-L-methionine-dependent methyltransferase (SAM-Mtase) superfamily (Joshi and Chiang, 1998; Lesnyak et al., 2007; Zou et al., 2020). SAM-Mtases are key enzymes in many plant metabolic pathways, playing important roles in the biosynthesis of many plant products associated plant growth and development, as well as in the resistance to many biotic and abiotic stressors (Douglas, 1996; Ying et al., 1996; Song et al., 2009; Byeon et al., 2015; Nam et al., 2016; Choi et al., 2017; Niu et al., 2018; Zou et al., 2020). The m<sup>2</sup> G966-specific 16S rRNA methyltransferases participate in specific methylation of the G966 base of 16S rRNA (Lesnyak et al., 2007).

Recently, Zou et al. (2020) localized *CMAL*, a 16S rRNA methyltransferase, to the chloroplast, and showed that this protein was important for chloroplast ribosome biogenesis and plant development. However, few other studies of the biological functions of 16S rRNA methyltransferases are available.

Here, we fine-mapped and cloned a soybean methyltransferase gene, *GmMT1*, that was strongly associated with isoflavone accumulation in soybean seeds. Consistent with Zou et al. (2020), we localized *GmMT1* to the chloroplast. Moreover, we found that the hairy roots of transgenic low-isoflavone soybean lines overexpressing *GmMT1* had significantly greater isoflavone contents than the hairy roots of the same lines not overexpressing *GmMT1*, suggesting that *GmMT1* may participate the isoflavone biosynthesis in soybeans. Additionally, we found that the heterologous expression of *GmMT1* in *Arabidopsis*, both ecotype Col-0 and the *mt1* mutant, increased isoflavone content relative to non-transgenic lines. This suggested that *GmMT1* may regulate isoflavone biosynthesis in other plants as well as soybeans.

Previous studies have shown that isoflavone content may affect plant resistance to various abiotic stressors, including salt and drought (Caldwell et al., 2005; Wu et al., 2008; Gutierrez-Gonzalez et al., 2010). In addition, decreases in isoflavone content have been shown to weaken the resistance of soybeans to the pathogen *P. sojae* (Subramanian et al., 2005; Graham et al., 2007). Here, we found that transgenic soybean and *Arabidopsis* lines overexpressing *GmMT1* not only contained higher levels of isoflavones than non-transgenic lines, but were less susceptible to salt and drought stress. This may be because isoflavones commonly exist as water-soluble glycosides (Pandey et al., 2014), which may play an important role in osmotic regulation under drought and salt stress (Pandey et al., 2014). In addition, when soybeans were infected with *P. sojae*, the hairy roots of the transgenic lines overexpressing *GmMT1* exhibited milder symptoms of *P. sojae* infection than did the non-transgenic lines, supporting the association between soybean isoflavone content and *P. sojae* resistance. Similarly, Cheng et al. (2015) found that an isoflavone reductase gene, *GmIFR*, was related to soybean isoflavone content and *P. sojae* resistance. However, the functional effects of *GmMT1* and *GmIFR* on soybean isoflavone content and *P. sojae* resistance differed. Unlike *GmMT1*, *GmIFR* expression decreased isoflavone content and increased *P. sojae* resistance.

Our results showed that *GmMT1* participates in the regulation of isoflavone content in soybeans, and that biotic and abiotic stress resistance depend on isoflavone content,

and, consequently, *GmMT1* expression. However, further study of *GmMT1* is required to better characterize the regulatory mechanisms underlying isoflavone accumulation, as well as the effects of isoflavone content on the stress responses of soybeans and other plants.

## DATA AVAILABILITY STATEMENT

The original contributions presented in the study are included in the article/**Supplementary Material**, further inquiries can be directed to the corresponding author/s.

## AUTHOR CONTRIBUTIONS

XZ and YH designed and supervised the research. RL, JZ, and DS conducted the experiment and analyzed the data. DW, ML, YZ, and WT conducted the field trial. XZ, YJ, YH, and WL wrote the manuscript. All authors read and approved the manuscript.

## FUNDING

This study was financially supported by the National Key Research and Development Project of China (2021YFF1001204), the Chinese National Natural Science Foundation (31871650 and 31971967), the National Project (2014BAD22B01 and 2016ZX08004001-007), the Youth Leading Talent Project of the Ministry of Science and Technology in China (2015RA228), The National Ten-thousand Talents Program, The National Project (CARS-04-PS04), the Postdoctoral Foundation of Heilongjiang Province (LBH-Q20004).

## ACKNOWLEDGMENTS

We thank LetPub ([www.letpub.com](http://www.letpub.com)) for its linguistic assistance and scientific consultation during the preparation of this manuscript.

## SUPPLEMENTARY MATERIAL

The Supplementary Material for this article can be found online at: <https://www.frontiersin.org/articles/10.3389/fpls.2022.865584/full#supplementary-material>

## REFERENCES

- Akond, M., Liu, S. M., Kantartzi, S. K., Meksem, K., Bellaloui, N., Lightfoot, D. A., et al. (2014). Quantitative trait loci for seed isoflavone contents in 'MD96-5722' by 'Spencer' recombinant inbred lines of soybean. *J. Agric. Food Chem.* 62, 1464–1468. doi: 10.1021/jf4040173
- Aoki, T., Akashi, T., and Ayabe, S.-I. (2000). Flavonoids of leguminous plants: structure, biological activity, and biosynthesis. *J. Plant Res.* 113, 475–488. doi: 10.1007/PL00013958
- Azam, M., Zhang, S. R., Abdelghany, A. M., Shaibu, A. S., Feng, Y., Li, Y. F., et al. (2020). Seed isoflavone profiling of 1168 soybean accessions from major growing ecoregions in China. *Food Res. Int.* 130:108957.
- Bradbury, K. E., Appleby, P. N., and Key, T. J. (2014). Fruit, vegetable, and fiber intake in relation to cancer risk: findings from the European prospective investigation into cancer and nutrition (EPIC). *Am. J. Clin. Nutr.* 100, 394s–398s. doi: 10.3945/ajcn.113.071357
- Byeon, Y., Choi, G. H., Lee, H. Y., and Back, K. (2015). Melatonin biosynthesis requires N-acetylserotonin methyltransferase activity of caffeic



- acid O-methyltransferase in rice. *J. Exp. Bot.* 66, 6917–6925. doi: 10.1093/jxb/erv396
- Cai, Z., Cheng, Y., Ma, Z., Liu, X., Ma, Q., Xia, Q., et al. (2018). Fine-mapping of QTLs for individual and total isoflavone content in soybean (*Glycine max* L.) using a high-density genetic map. *Theor. Appl. Genet.* 131, 555–568. doi: 10.1007/s00122-017-3018-x
- Caldwell, C. R., Britz, S. J., and Mirecki, R. M. (2005). Effect of temperature, elevated carbon dioxide, and drought during seed development on the isoflavone content of dwarf soybean [*Glycine max* (L.) Merrill] grown in controlled environments. *J. Agric. Food Chem.* 53, 1125–1129. doi: 10.1021/jf0355351
- Cao, D., Hou, W. S., Song, S. K., Sun, H. B., Wu, C. X., Gao, Y. S., et al. (2009). Assessment of conditions affecting *Agrobacterium rhizogenes*-mediated transformation of soybean. *Plant Cell Tissue Organ Cult.* 96, 45–52. doi: 10.1007/s11240-008-9458-x
- Cheng, Q., Li, N., Dong, L., Zhang, D., Fan, S., Jiang, L., et al. (2015). Overexpression of soybean isoflavone reductase (GmIFR) enhances resistance to phytophthora sojae in soybean. *Front. Plant Sci.* 6:1024. doi: 10.3389/fpls.2015.01024
- Choi, G. H., Lee, H. Y., and Back, K. (2017). Chloroplast overexpression of rice caffeic acid O-methyltransferase increases melatonin production in chloroplasts via the 5-methoxytryptamine pathway in transgenic rice plants. *J. Pineal Res.* 63:e12412. doi: 10.1111/jpi.12412
- Clough, S. J., and Bent, A. F. (1998). Floral dip: a simplified method for *Agrobacterium*-mediated transformation of *Arabidopsis thaliana*. *Plant J.* 16, 735–743. doi: 10.1046/j.1365-3113.1998.00343.x
- Dixon, R. A., Achnine, L., Kota, P., Liu, C. J., Reddy, M. S., and Wang, L. (2002). The phenylpropanoid pathway and plant defence—a genomics perspective. *Mol. Plant Pathol.* 3, 371–390. doi: 10.1046/j.1364-3703.2002.00131.x
- Douglas, C. J. (1996). Phenylpropanoid metabolism and lignin biosynthesis: from weeds to trees. *Trends Plant Sci.* 1, 171–178. doi: 10.1016/1360-1385(96)10019-4
- Funaki, A., Waki, T., Noguchi, A., Kawai, Y., Yamashita, S., Takahashi, S., et al. (2015). Identification of a highly specific isoflavone 7-O-glucosyltransferase in the soybean (*Glycine max* (L.) Merr.). *Plant Cell Physiol.* 56, 1512–1520. doi: 10.1021/jf504778x
- Goodstein, D. M., Shu, S., Russell, H., Rochak, N., Hayes, R. D., Joni, F., et al. (2012). Phytozome: a comparative platform for green plant genomics. *Nucl. Acids Res.* 40, D1178–D1186. doi: 10.1093/nar/gkr944
- Graham, T. L., Graham, M. Y., Subramanian, S., and Yu, O. (2007). RNAi silencing of genes for elicitation or biosynthesis of 5-deoxyisoflavonoids suppresses race-specific resistance and hypersensitive cell death in *Pytophthora sojae* infected tissues. *Plant Physiol.* 144, 728–740. doi: 10.1104/pp.107.09.7865
- Gutierrez-Gonzalez, J. J., Guttikonda, S. K., Tran, L. S. P., Aldrich, D. L., Zhong, R., Yu, O., et al. (2010). Differential expression of isoflavone biosynthetic genes in soybean during water deficits. *Plant Cell Physiol.* 51, 936–948. doi: 10.1093/pcp/pcq065
- Gutierrez-Gonzalez, J. J., Vuong, T. D., Zhong, R., Yu, O., Lee, J. D., Shannon, G., et al. (2011). Major locus and other novel additive and epistatic loci involved in modulation of isoflavone concentration in soybean seeds. *Theor. Appl. Genet.* 123, 1375–1385. doi: 10.1007/s00122-011-1673-x
- Hamayun, M., Hussain, A., Khan, S. A., Kim, H. Y., Khan, A. L., Waqas, M., et al. (2017). Gibberellins producing endophytic fungus porostereum spadicium AGH786 rescues growth of salt affected soybean. *Front. Microbiol.* 8:686. doi: 10.3389/fmicb.2017.00686
- Hoecq, J. A., Fehr, W. R., Murphy, P. A., and Welke, G. A. (2000). Influence of genotype and environment on isoflavone contents of soybean. *Crop Sci.* 40, 48–51. doi: 10.2135/cropsci2000.40148x
- Jia, T., An, J., Liu, Z., Yu, B., and Chen, J. (2017). Salt stress induced soybean GmIFS1 expression and isoflavone accumulation and salt tolerance in transgenic soybean cotyledon hairy roots and tobacco. *Plant Cell Tiss. Organ Cult.* 128, 469–477. doi: 10.1007/s11240-016-1124-0
- Joshi, C. P., and Chiang, V. L. (1998). Conserved sequence motifs in plant S-adenosyl-L-methionine-dependent methyltransferases. *Plant Mol. Biol.* 37, 663–674. doi: 10.1023/a:1006035210889
- Kelley, L. A., Mezulis, S., Yates, C. M., Wass, M. N., and Sternberg, M. J. E. (2015). The Phyre2 web portal for protein modeling, prediction and analysis. *Nat. Protoc.* 10, 845–858. doi: 10.1038/nprot.2015.053
- Kosambi, D. D. (1944). The estimation of map distance from recombination values. *Ann. Eugen.* 12, 172–175. doi: 10.1111/j.1469-1809.1943.tb02321.x
- Lee, S. J., Yan, W. K., Ahn, J. K., and Chung, I. M. (2003). Effects of year, site, genotype and their interactions on various soybean isoflavones. *Field Crops Res.* 81, 181–192. doi: 10.1016/S0378-4290(02)00220-4
- Lesnyak, D. V., Osipiuk, J., Skarina, T., Sergiev, P. V., Bogdanov, A. A., Edwards, A., et al. (2007). Methyltransferase that modifies guanine 966 of the 16 S rRNA – Functional identification and tertiary structure. *J. Biol. Chem.* 282, 5880–5887. doi: 10.1074/jbc.M608214200
- Li, B., Tian, L., Zhang, J. Y., Huang, L., Han, F. X., Yan, S. R., et al. (2014). Construction of a high-density genetic map based on large-scale markers developed by specific length amplified fragment sequencing (SLAF-seq) and its application to QTL analysis for isoflavone content in *Glycine max*. *BMC Genomics* 15:1086. doi: 10.1186/1471-2164-15-1086
- Li, R., Yu, C., Li, Y., Lam, T. W., Yiu, S. M., Kristiansen, K., et al. (2009). SOAP2: an improved ultrafast tool for short read alignment. *Bioinformatics* 25, 1966–1967. doi: 10.1093/bioinformatics/btp336
- Liang, H.-Z., Wang, S.-F., Yu, Y.-L., Lian, Y., Wang, T.-F., Wei, Y.-L., et al. (2010). QTL mapping of isoflavone, oil and protein content in soybean. *Sci. Agric. Sin.* 9, 1108–1116. doi: 10.1016/S1671-2927(09)60197-8
- Liu, D., Ma, C., Hong, W., Huang, L., Liu, M., Liu, H., et al. (2014). Construction and analysis of high-density linkage map using high-throughput sequencing data. *PLoS One* 9:e98855. doi: 10.1371/journal.pone.0098855
- Livak, K. J., and Schmittgen, T. (2001). Analysis of relative gene expression data using real-time quantitative PCR and the 2-DDCt method. *Methods* 25, 402–408. doi: 10.1006/meth.2001.1262
- Malloy, K. M., Wang, J. D., Clark, L. H., Fang, Z. W., Sun, W. C., Yin, Y. J., et al. (2018). Novasoy and genistein inhibit endometrial cancer cell proliferation through disruption of the AKT/mTOR and MAPK signaling pathways. *Am. J. Transl. Res.* 10, 784–795. doi: 10.1093/ajcn/nqy037
- McKenna, A., Hanna, M., Banks, E., Sivachenko, A., Cibulskis, K., Kernysky, A., et al. (2010). The Genome Analysis Toolkit: a MapReduce framework for analyzing next-generation DNA sequencing data. *Genome Res.* 20, 1297–1303. doi: 10.1101/gr.107524.110
- Meng, F. L., Han, Y. P., Teng, W. L., Li, Y. G., and Li, W. B. (2011). QTL underlying the resistance to soybean aphid (*Aphis glycines* Matsumura) through isoflavone-mediated antibiosis in soybean cultivar ‘Zhongdou 27’. *Theor. Appl. Genet.* 123, 1459–1465. doi: 10.1007/s00122-011-1680-y
- Meng, L., Li, H., Zhang, L., and Wang, J. (2015). QTL IciMapping: integrated software for genetic linkage map construction and quantitative trait locus mapping in biparental populations. *Crop J.* 3, 269–283. doi: 10.1016/j.cj.2015.01.001
- Nam, K. H., Kim, D. Y., Pack, I. S., Park, J. H., Seo, J. S., Do Choi, Y., et al. (2016). Comparative analysis of chemical compositions between non-transgenic soybean seeds and those from plants over-expressing AtJMT, the gene for jasmonic acid carboxyl methyltransferase. *Food Chem.* 196, 236–241. doi: 10.1016/j.foodchem.2015.09.046
- Nielsen, I. L. F., and Williamson, G. (2007). Review of the factors affecting bioavailability of soy isoflavones in humans. *Nutr. Cancer* 57, 1–10. doi: 10.1080/01635580701267677
- Niu, G. L., Gou, W., Han, X. L., Qin, C., Zhang, L. X., Abomohra, A., et al. (2018). Cloning and functional analysis of phosphoethanolamine methyltransferase promoter from Maize (*Zea mays* L.). *Int. J. Mol. Sci.* 19:191. doi: 10.3390/ijms19010191
- Oldach, K. H., Peck, D. M., Nair, R. M., Sokolova, M., Harris, J., Bogacki, P., et al. (2014). Genetic analysis of tolerance to the root lesion nematode *Pratylenchus neglectus* in the legume *Medicago littoralis*. *BMC Plant Biol.* 14:100. doi: 10.1186/1471-2229-14-100
- Pandey, A., Misra, P., Khan, M. P., Swarnkar, G., Tewari, M. C., Bhamhani, S., et al. (2014). Co-expression of *Arabidopsis* transcription factor, AtMYB12, and soybean isoflavone synthase, GmIFS1, genes in tobacco leads to enhanced biosynthesis of isoflavones and flavonols resulting in osteoprotective activity. *Plant Biotechnol. J.* 12, 69–80.
- Paz, M. M., Shou, H. X., Guo, Z. B., Zhang, Z. Y., Banerjee, A. K., and Wang, K. (2004). Assessment of conditions affecting *Agrobacterium*-mediated soybean transformation using the cotyledonary node explant. *Euphytica* 136, 167–179. doi: 10.1023/B:EUPH.0000030669.75809.dc

- Pei, R. L., Zhang, J. Y., Tian, L., Zhang, S. R., Han, F. X., Yan, S. R., et al. (2018). Identification of novel QTL associated with soybean isoflavone content. *Crop J.* 6, 244–252. doi: 10.1016/j.cj.2017.10.004
- Primomo, V. S., Poysa, V., Ablett, G. R., Jackson, C. J., Gijzen, M., and Rajcan, I. (2005). Mapping QTL for individual and total isoflavone content in soybean seeds. *Crop Sci.* 45, 2454–2464. doi: 10.2135/cropsci2004.0672
- Pulst, S. M. (1999). Genetic linkage analysis. *Arch. Neurol.* 56, 667–672. doi: 10.1001/archneur.56.6.667
- Qi, X., Li, M. W., Xie, M., Liu, X., Ni, M., Shao, G., et al. (2014). Identification of a novel salt tolerance gene in wild soybean by whole-genome sequencing. *Nat. Commun.* 5:4340. doi: 10.1038/ncomms5340
- Rafalski, J. A. (2010). Association genetics in crop improvement. *Curr. Opin. Plant Biol.* 13, 174–180. doi: 10.1016/j.pbi.2009.12.004
- Schmutz, J., Cannon, S. B., Schlueter, J., Ma, J., Mitros, T., Nelson, W., et al. (2010). Erratum: genome sequence of the palaeopolyploid soybean. *Nature* 465, 120–120. doi: 10.1038/nature08957
- Song, J. T., Koo, Y. J., Park, J. B., Seo, Y. J., Cho, Y. J., Seo, H. S., et al. (2009). The expression patterns of AtBSMT1 and AtSAGT1 encoding a salicylic acid (SA) methyltransferase and a SA glucosyltransferase, respectively, in *Arabidopsis* plants with altered defense responses. *Mol. Cells* 28, 105–109. doi: 10.1007/s10059-009-0108-x
- Spagnuolo, C., Russo, G. L., Orhan, I. E., Habtemariam, S., Daglia, M., Sureda, A., et al. (2015). Genistein and cancer: current status, challenges, and future directions. *Adv. Nutr.* 6, 408–419. doi: 10.3945/an.114.008052
- Subramanian, S., Graham, M. Y., Yu, O., and Graham, T. L. (2005). RNA interference of soybean isoflavone synthase genes leads to silencing in tissues distal to the transformation site and to enhanced susceptibility to *Phytophthora sojae*. *Plant Physiol.* 137, 1345–1353. doi: 10.1104/pp.104.057257
- Sugiyama, A., Yamazaki, Y., Hamamoto, S., Takase, H., and Yazaki, K. (2017). Synthesis and secretion of isoflavones by field-grown soybean. *Plant Cell Physiol.* 58, 1594–1600. doi: 10.1093/pcp/pcx084
- Tamura, K., Peterson, D., Peterson, N., Stecher, G., Nei, M., and Kumar, S. (2011). MEGA5: molecular evolutionary genetics analysis using maximum likelihood, evolutionary distance, and maximum parsimony methods. *Mol. Biol. Evol.* 28, 2731–2739. doi: 10.1093/molbev/msr121
- Vyn, T. J., Xinhua, Y., Bruulsema, T. W., Jackson, C. J. C., Istvan, R., and Brouder, S. M. (2002). Potassium fertilization effects on isoflavone concentrations in soybean [*Glycine max* (L.) Merr.]. *J. Agric. Food Chem.* 50, 3501–3506. doi: 10.1021/jf0200671
- Wahajuddin, Taneja, I., Arora, S., Raju, K. S. R., and Siddiqui, N. (2013). Disposition of pharmacologically active dietary isoflavones in biological systems. *Curr. Drug Metab.* 14, 369–380. doi: 10.2174/1389200211314040002
- Wang, Y., Han, Y., Zhao, X., Li, Y., Teng, W., Li, D., et al. (2015). Mapping isoflavone QTL with main, epistatic and QTL x environment effects in recombinant inbred lines of soybean. *PLoS One* 10:e0118447. doi: 10.1371/journal.pone.0118447
- Wu, W., Zhang, Q., Zhu, Y. M., Lam, H. M., Cai, Z. W., and Guo, D. J. (2008). Comparative metabolic profiling reveals secondary metabolites correlated with soybean salt tolerance. *J. Agric. Food Chem.* 56, 11132–11138. doi: 10.1021/jf8024024
- Ying, Z., Janney, N., and Houtz, R. L. (1996). Organization and characterization of the ribulose-1,5-bisphosphate carboxylase/oxygenase large subunit  $\epsilon$ N-methyltransferase gene in tobacco. *Plant Mol. Biol.* 32, 663–671. doi: 10.1007/BF00020207
- Yoo, S. D., Cho, Y. H., and Sheen, J. (2007). Arabidopsis mesophyll protoplasts: a versatile cell system for transient gene expression analysis. *Nat. Protoc.* 2, 1565–1572. doi: 10.1038/nprot.2007.199
- Zeng, G., Li, D., Han, Y., Teng, W., Wang, J., Qiu, L., et al. (2009). Identification of QTL underlying isoflavone contents in soybean seeds among multiple environments. *Theor. Appl. Genet.* 118, 1455–1463. doi: 10.1007/s00122-009-0994-5
- Zhang, H. J., Li, J. W., Liu, Y. J., Jiang, W. Z., Du, X. L., Li, L., et al. (2014). Quantitative trait loci analysis of individual and total isoflavone contents in soybean seeds. *J. Genet.* 93, 331–338. doi: 10.1007/s12041-014-0371-2
- Zhang, P. P., Du, H. Y., Wang, J., Pu, Y. X., Yang, C. Y., Yan, R. J., et al. (2020). Multiplex CRISPR/Cas9-mediated metabolic engineering increases soya bean isoflavone content and resistance to soya bean mosaic virus. *Plant Biotechnol. J.* 18, 1384–1395. doi: 10.1111/pbi.13302
- Zou, M. J., Mu, Y., Chai, X., Ouyang, M., Yu, L. J., Zhang, L. X., et al. (2020). The critical function of the plastid rRNA methyltransferase, CMAL, in ribosome biogenesis and plant development. *Nucleic Acids Res.* 48, 3195–3210. doi: 10.1093/nar/gkaa129

**Conflict of Interest:** The authors declare that the research was conducted in the absence of any commercial or financial relationships that could be construed as a potential conflict of interest.

**Publisher's Note:** All claims expressed in this article are solely those of the authors and do not necessarily represent those of their affiliated organizations, or those of the publisher, the editors and the reviewers. Any product that may be evaluated in this article, or claim that may be made by its manufacturer, is not guaranteed or endorsed by the publisher.

Copyright © 2022 Li, Zou, Sun, Jing, Wu, Lian, Teng, Zhan, Li, Zhao and Han. This is an open-access article distributed under the terms of the Creative Commons Attribution License (CC BY). The use, distribution or reproduction in other forums is permitted, provided the original author(s) and the copyright owner(s) are credited and that the original publication in this journal is cited, in accordance with accepted academic practice. No use, distribution or reproduction is permitted which does not comply with these terms.