



Characterization of a Novel *TtLEA2* Gene From *Tritipyrum* and Its Transformation in Wheat to Enhance Salt Tolerance

Zhifen Yang^{1†}, Yuanhang Mu^{1†}, Yiqin Wang¹, Fang He^{1,2}, Luxi Shi¹, Zhongming Fang¹, Jun Zhang¹, Qingqin Zhang¹, Guangdong Geng^{1*} and Suqin Zhang^{1,2*}

¹ College of Agriculture, Guizhou University, Guiyang, China, ² Guizhou Subcenter of National Wheat Improvement Center, Guiyang, China

OPEN ACCESS

Edited by:

Vijay Kumar Tiwari,
University of Maryland, College Park,
United States

Reviewed by:

Kun Zhang,
Qingdao Agricultural University, China
Shailender Kumar Verma,
University of Delhi, India

*Correspondence:

Guangdong Geng
gdgeng213@163.com
Suqin Zhang
zsqn2002@163.com

[†] These authors have contributed
equally to this work

Specialty section:

This article was submitted to
Plant Breeding,
a section of the journal
Frontiers in Plant Science

Received: 07 December 2021

Accepted: 11 February 2022

Published: 04 April 2022

Citation:

Yang Z, Mu Y, Wang Y, He F, Shi L,
Fang Z, Zhang J, Zhang Q, Geng G
and Zhang S (2022) Characterization
of a Novel *TtLEA2* Gene From
Tritipyrum and Its Transformation
in Wheat to Enhance Salt Tolerance.
Front. Plant Sci. 13:830848.
doi: 10.3389/fpls.2022.830848

Late embryogenesis-abundant (LEA) proteins are critical in helping plants cope with salt stress. “Y1805” is a salt-tolerant *Tritipyrum*. We identified a “Y1805”-specific LEA gene that was expressed highly and sensitively under salt stress using transcriptome analysis. The novel group 2 LEA gene (*TtLEA2-1*) was cloned from “Y1805.” *TtLEA2-1* contained a 453 bp open reading frame encoding an 151-amino-acid protein that showed maximum sequence identity (77.00%) with *Thinopyrum elongatum* by phylogenetic analysis. It was mainly found to be expressed highly in the roots by qRT-PCR analysis and was located in the whole cell. Forty-eight candidate proteins believed to interact with *TtLEA2-1* were confirmed by yeast two-hybrid analysis. These interacting proteins were mainly enriched in “environmental information processing,” “glycan biosynthesis and metabolism,” and “carbohydrate metabolism.” Protein-protein interaction analysis indicated that the translation-related 40S ribosomal protein SA was the central node. An efficient wheat transformation system has been established. A coleoptile length of 2 cm, an *Agrobacterium* cell density of 0.55–0.60 OD₆₀₀, and 15 KPa vacuum pressure were ideal for common wheat transformation, with an efficiency of up to 43.15%. Overexpression of *TaLEA2-1* in wheat “1718” led to greater height, stronger roots, and higher catalase activity than in wild type seedlings. *TaLEA2-1* conferred enhanced salt tolerance in transgenic wheat and may be a valuable gene for genetic modification in crops.

Keywords: wheat, *LEA2* from *Th. elongatum*, expression pattern, subcellular localization, interacting proteins, transformation system, salt tolerance

INTRODUCTION

Common wheat (*Triticum aestivum* L.) is an important grain crop worldwide and has more influence on global food security than any other crop (Wingen et al., 2017). Salt stress is one of the major abiotic stresses affecting different crops and their yields worldwide (Bhagi et al., 2013). Wheat productivity is severely affected by soil salinity. Exposure of plants to high salt

stress stimulates the expression of genes encoding protective proteins such as late embryogenesis-abundant (LEA) proteins, osmotin, pathogenesis-related proteins, and ion transporters (Filho et al., 2003; Rorat, 2006; Jyothsnakumari et al., 2009). LEA proteins have been closely linked to abiotic stress tolerance, such as high salinity stress, drought, and low temperature in many studies. The *LEA* gene family is an important group of functional proteins that reduce cell damage and protect cells under abiotic stress (Hirayama and Shinozaki, 2010; Debnath et al., 2011). LEA proteins are highly hydrophilic and intrinsically unstructured in the hydrated state but partially fold into α -helical structures under dehydration (Hand et al., 2011; Thalhammer and Hinch, 2013). This feature allows them to function as chaperones, preventing protein aggregation during abiotic stress (Hanin et al., 2011; Cuevas-Velazquez et al., 2014). In addition, LEA proteins contribute to the stabilization of membranes, binding of calcium and other metal ions, and interactions between DNA and RNA (Tolte et al., 2010; Rahman et al., 2011; Battaglia and Covarrubias, 2013; Rosales et al., 2014). LEA proteins have various protective activities against enzymes (Amara et al., 2014; Furuki and Sakurai, 2016).

The expression of *LEA* may be induced by salinity and drought stress and increase tolerance to salinity and drought stress in many kinds of plants. Overexpression of *OsLEA5* increased drought tolerance in rice (Huang et al., 2018). Transgenic sweet potato non-embryogenic calli that overexpressed *IbLEA14* showed enhanced tolerance to salt and drought stress, while RNAi calli exhibited increased stress sensitivity (Park et al., 2011). The group 5 LEA protein, *ZmLEA5C*, enhances tolerance to osmotic stress in transgenic tobacco (Liu et al., 2014). Despite the universal importance of common wheat, its transformation has lagged behind that of other crop species in the past few decades due to its complex polyploid genome, genotype dependence, and low regeneration following genetic transformation (Bhalla, 2006; Risacher et al., 2009; Wang et al., 2018; Hayta et al., 2019). Transgenic approaches are required for gene functional studies, crop improvement, and the delivery of components for new breeding technologies such as genome editing (Borrill et al., 2019).

The E genome species (e.g., halophile wheatgrass *Thinopyrum elongatum*) of the *Triticeae* possess salt-tolerant properties, making them invaluable sources for genetic variation and the improvement of wheat crops (Margiotta et al., 2020). *Tritipyrum* derived from the wide crosses of *Triticum* and *Thinopyrum* displays salt tolerance (Yuan and Tomita, 2015). The *LEA* genes have been reported in various plants such as bread wheat (Liu et al., 2019), *Oryza sativa* (Hu et al., 2016), peanut (Qiao et al., 2021), pepper (Luo et al., 2019), grapevine (Xu et al., 2020), and poplar (Cheng et al., 2021). However, the characterization and transformation of *LEA* genes from salt-tolerant *Tritipyrum* remain unknown. Therefore, in the present study, we cloned a novel *LEA* gene from *Tritipyrum* to understand its sequence characterization, evolutionary relationships, expression patterns, and interacting proteins under salt stress. Moreover, we established an efficient wheat transformation system (coleoptile meristem infiltration). This study provides further insight into the salt-tolerant mechanism of *LEA* genes and the breeding of salt-tolerant wheat.

MATERIALS AND METHODS

Plant Materials

Salt-tolerant “Y1805” is a stable progeny from a wide cross between *Triticum aestivum* and *Th. elongatum*. “Y1805” not only has A, B, and D chromosomes from wheat parents but also contains a set of alien chromosomes that originated from the E genome of *Th. elongatum*. Salt-tolerant *Tritipyrum* (“Y1805”) and salt-sensitive *Triticum aestivum* (“Chinese Spring,” “88,” “811,” and “1718”) were used in this experiment.

Plant Growth Conditions and Stress Treatments

The seeds of “Y1805” and “Chinese Spring” (CS) were germinated in a growth chamber (relative humidity of 75% and a 20/15°C light/dark photoperiod). The seedlings were sown on a floater board in 1/2 Hoagland’s solution with a 16/8 h light/dark cycle, irradiance of 400 $\mu\text{mol m}^{-2}\text{s}^{-1}$, and the same temperature and humidity as in the germination chamber. The culture solution was refreshed every 3 days. On the 14th day (two-leaf stage), salt stress treatments (1/2 Hoagland’s solution supplemented with 250 mM NaCl) were started. The first wheat root, stem, and leaf samples of uniform size were selected at 5 h after exposure to salt stress. The materials were recovered (in 1/2 Hoagland’s solution without NaCl) after 24 h of salt stress. The second samplings were performed at 1 h after recovery. Normal (1/2 Hoagland’s solution without NaCl) cultured materials, CK1 and CK2, were used as parallel controls, respectively. All tissue samples were immediately frozen in liquid nitrogen after sampling and stored at -80°C for the transcriptomic and qRT-PCR analysis, and gene cloning. Three biological replications were used, and at least 10 seedlings were mixed per replicate.

RNA Extraction and Transcriptome Analysis

Total RNA was extracted from the roots at the salt stress and recovery stages using TRIzol reagent (Thermo Fisher Scientific, Waltham, MA, United States) following the manufacturer’s protocol and then treated with RNase-free DNase I (Takara, Dalian, China) for 30 min. The total RNA quantity and quality were identified by both 1.0% agarose gel and a NanoDrop 1000 spectrophotometer. A total of 20 μg RNA was used for cDNA library construction and transcriptome sequencing (BGISEQ-500) at Beijing Genomics Institute (Shenzhen, China). After data filtering, clean reads were obtained and then compared with the reference genomes [common wheat “CS,” AABBDD¹ and *Th. elongatum*, EE²] by using HISAT2 (version 2.1.0) software. Differentially expressed genes (DEGs) were selected according to the method of Peng et al. (2022). In brief, fragments per kilobase of exon model per million mapped fragment (FPKM) values were calculated using RSEM (version 1.2.8), and the level of gene expression was quantified (Bates et al., 1973). The FPKM method was then used to detect DEGs among the treatment and control samples (Trapnell et al., 2010). Finally, genes potentially regulated

¹<http://www.wheatgenome.org/>

²<https://ngdc.cncb.ac.cn/gwh/>

by treatment were identified using a false discovery rate (FDR) threshold < 0.01 , p -value < 0.001 , and absolute \log_2 fold change value ($|\log_2FC|$) > 1 between the three salt-treated and three salt-free samples using DESeq software (Anders and Huber, 2010). The Phyper function in the R package was used for enrichment analysis of gene ontology (GO).

RNA Reverse Transcription, Late Embryogenesis-Abundant Gene Amplification, and Plasmid Construction

A PrimeScript RT kit (Takara) was used to reverse transcribe RNA into cDNA. The full-length coding sequence of *TtLEA2-1* was amplified from “Y1805” cDNA using primers with a *BsaI* restriction site at the 5' and 3' ends of the amplified fragment. The primers used for amplification are provided in **Supplementary Table 1**. The amplified fragment was digested with *Sac/SpeI* and *BamHI/KpnI*, and inserted into the pTCK303 vector using T4-DNA ligase (Takara) as described by the manufacturer's protocol. This vector has been modified to contain the green fluorescence protein (GFP) gene. The inserted sequence was driven by a cauliflower mosaic virus (CaMV) 35S promoter.

Sequence Alignments and Phylogenetic Analysis of *TtLEA2-1* Gene

Multiple alignment of the *LEA* gene sequences was performed using DNAMAN with the complete alignment method. Displaying complete base sequence and coloring 100% homologous bases were selected as the parameters. Online tools Expasy³ for hydropathy prediction, and NetPhos 2.0⁴ and CPHmodels 3.2⁵ for phosphorylation site analysis were adopted.

TtLEA2-1 proteins were identified from wheat protein sequence data using BLAST HMM profiles⁶ for LEA_1 (PF03760), LEA_2 (PF03168), LEA_3 (PF03242), LEA_4 (PF02987), LEA_5 (PF00477), LEA_6 (PF10714), seed maturation protein (SMP, PF04927), and dehydrin (DHN, PF00257) (Liu et al., 2019). A total of 57 DNA sequences encoding LEAs were retrieved from the Phytozome⁷ and Ensembl⁸ servers (accession numbers in **Supplementary Table 2**). A phylogenetic tree was created using MEGA 7 (Kumar et al., 2016) with the maximum-likelihood method with 1000 bootstraps.

Homology Modeling and Molecular Simulation of *TtLEA2-1* Protein

MODELLER9.22⁹ was adopted for homology modeling of *TtLEA2-1* protein (Eswar et al., 2006). The X-ray crystal structure of a putative LEA protein At2g46140.1 (PDB ID: IYYC) was used as template for this procedure. The predicted model was analyzed

using SAVES¹⁰. GROMACS software¹¹ was used for calculating root mean square deviation (RMSD) and the potential energy value of the model protein (Hess et al., 2008). Ramachandran plots were analyzed using Rampage server¹² (Lovell et al., 2003).

Expression Pattern Analysis by Quantitative RT-PCR

Total RNA from the different tissues or stages were reverse-transcribed using Power SYBR Green PCR Master Mix (Applied Biosystems, Foster City, CA, United States). qRT-PCR amplification was performed on an ABI StepOne Real-Time PCR System. The relative expression levels were calculated using the $2^{-\Delta\Delta Ct}$ method, with three biological replications and three technical replications (Choa et al., 2015), and β -actin and *18S* RNA were used as the internal controls.

Subcellular Localization of *TtLEA2-1*

The construct containing *TtLEA2-1* was transiently transformed into mesophyll protoplasts prepared from the leaves of 4-week-old *Oryza sativa* with a polyethylene glycol-mediated protocol (Yoo et al., 2007). The transformed mesophyll protoplasts were incubated at 22°C for 16 h in the dark. GFP fluorescence was observed in transformed protoplasts using a confocal laser-scanning microscope (FV1000 Olympus Corp., Tokyo, Japan).

Yeast Two-Hybrid Screen of *TtLEA2-1* Interacting Proteins

An Ultrapure RNA Kit (CW BIO, China) was used to extract total RNA from “Y1805” roots subjected to 5 h of salt stress following the manufacturer's instructions. mRNA was isolated using a NucleoTrap mRNA kit (Clontech, Carlsbad, CA, United States). Double-strand cDNA was synthesized using a SMART cDNA Library Construction Kit (Clontech). The double-strand cDNA was normalized using the Trimmer-Direct cDNA normalization kit (Evrogen, Moscow, Russia). Biotin-DSN-attB2/attB1 primers were added to synthesize a cDNA library. BP Clonase II Mixp (Thermo Fisher Scientific) was added to recombine pDONR222 (ZYBscience, Shanghai, China) with cDNA, which was then electro-transformed into *Escherichia coli* DH5 α (Collaborative Innovation Center for the Prevention and Control of Infectious Diseases in the Western Region, Xi'an, China). A PureLink HiPure Plasmid Filter Midiprep Kit (Thermo Fisher Scientific) was employed to extract library plasmids. The library plasmids and pGADT7 (Takara) were co-transformed to *E. coli* DH5 α (Collaborative Innovation Center for the Prevention and Control of Infectious Diseases in the Western Region). The bacterial stock solution was diluted 1000-fold to identify the capacity of the cDNA library. The full-length coding sequence of *TtLEA2-1* was inserted into the bait vector pGBKT7 (Takara). The recombinant construct was introduced into the yeast strain Y2HGOLD using the polyethylene glycol/LiAc method and tested for autoactivation and toxicity. SD/-Leu/-Trp (DDO) plates (Coolaber, Beijing,

³<https://web.expasy.org/protscale/>

⁴<http://www.cbs.dtu.dk/services/NetPhos/>

⁵<http://www.cbs.dtu.dk/services/CPHmodels/>

⁶<http://pfam.xfam.org>

⁷<https://phytozome.jgi.doe.gov/pz/portal.html>

⁸http://plants.ensembl.org/Triticum_aestivum/Info/Index

⁹<https://salilab.org/modeller/>

¹⁰<https://saves.mbi.ucla.edu/>

¹¹<http://www.gromacs.org/>

¹²<https://saves.mbi.ucla.edu/>

China) and SD/-Ade/-His/-Leu/-Trp (QDO) plates (Coolaber) were used to screen monoclonal colonies (> 2 mm), and selected colonies were placed in DDO liquid medium with shaking during the logarithmic growth phase (29°C, 200 rpm, 20 h) and then plated on QDO medium. Then positive clones were selected on DDO and QDO (Coolaber) media. The positive clones sequencing results were analyzed via the basic local alignment search tool (BLAST).

Switch Back Prey Plasmid and Confirmation of Positive Interactions in Yeast

The selected positive clones were extracted using a yeast plasmid extraction kit (Solarbio, Beijing, China), and then transformed into *E. coli* DH5 α (Collaborative Innovation Center for the Prevention and Control of Infectious Diseases in the Western Region). After culturing, the plasmid was extracted with a plasmid extraction kit (Tiangen, Beijing, China), and the plasmid and pGBKT7- *TtLEA2-1* were co-transformed into yeast Y2HGold cells. The positive bacteria were screened by coating DDO, QDO, and QDO/X auxotrophic plates. The GO and Kyoto Encyclopedia of Genes and Genomes (KEGG) enrichment analyses, and protein-protein interaction (PPI) analysis were performed for these interacting proteins.

Genetic Transformation and Phenotype Analysis

The vector with target genes was transferred into *Agrobacterium tumefaciens* strain EHA105 (Takara). *Agrobacterium* was cultivated in Luria Broth medium with 20 mg/L rifampicin, 50 mg/L kanamycin, 1 mL/L acetosyringone (AS), and 200 μ L/L SILWET1-77 (pH 7.00). *Agrobacterium* containing the target gene was introduced into 120 wheat coleoptiles by *Agrobacterium*-mediated transformation under optimized vacuum pressure (coleoptile transformation). Briefly, the tip of coleoptiles was cut to expose the meristem, soaked in *Agrobacterium* inoculum in a bell jar under vacuum, and a vacuum was drawn for 5 min infiltration. Several key factors (coleoptile length, *Agrobacterium* cell density (OD_{600nm}), and vacuum pressure) were screened based on gradient tests. Inoculated coleoptiles were covered with a plastic bag to maintain high humidity and placed in the dark for 3 days. These coleoptiles were then transferred onto a 24-hole tray with peat substrate.

For the selection of transformants, seedlings of T₀ transgenic wheat containing the GFP reporter gene were detected using a LUYOR-3415RG hand-held lamp (LUYOR Corporation, Shanghai, China), and planted in a field. Their leaves were sampled at the seedling stage for further PCR identification of transgenic plants. Putative transformants were tested by multiplex PCR amplification of genomic DNA using the specific primers for the CaMV 35S promoter and *GFP* gene, and the primers for housekeeping 18S gene (Supplementary Table 1). PCR products were separated on 1% (w/v) agarose gel. Homozygous T3 transgenic wheat lines were selected following assays for growth (root length and seedling height), plant water

content, and catalase (CAT) activity. Three biological replications were performed in this experiment.

Plant Water Content and Catalase Activity Assay in Transgenic Wheat

Samples were collected at 0 h (CK), 5 h (T1 stage), and 24 h (T2 stage) after salt stress, and at 1 h (R1 stage) after recovery for assaying growth, plant water content, and CAT activity. Plant dry weight was measured after plants were oven-dried at 90°C for 48 h. Plant water content was calculated as (plant fresh weight - plant dry weight)/plant fresh weight \times 100. An assay kit (Cas no.: BC0205, Solarbio, Beijing, China) for CAT activity measurement was applied in accordance with the manufacturer's instructions.

Statistical Analyses

Statistical software (SPSS 20.00, IBM Inc., Armonk, NY, United States) and graphics software (Origin 2017, OriginLab Inc., Northampton, MA, United States) were used for the data analysis and figure construction, respectively. Duncan's multiple range test was performed to determine significant differences between means at a significance level of $p < 0.05$ after displaying a significant effect during an ANOVA.

RESULTS

Transcriptomic Analysis of Late Embryogenesis-Abundant Expression Level Under Salt Stress and Recovery Conditions in Two Wheat Varieties

We conducted a genome-wide transcriptome analysis to determine the *Tritipyrum* genes that affected the salt stress response. LEA-related genes were found to take part in the response to salt stress using transcriptome analysis in salt-tolerant *Tritipyrum* "Y1805." BLAST analysis indicated that *Tel3E01G270600* should be an LEA gene with an LEA-2 domain. Therefore, *Tel3E01G270600* may be an LEA-2 protein. The relative expression level (\log_2 FC = 7.93) of *Tel3E01G270600* was significantly higher than salt-sensitive wheat CS (\log_2 FC = 0) under salt stress (Table 1). However, this value returned to zero rapidly after recovery in "Y1805." The *Tel3E01G270600* gene was annotated and assigned to oxidoreductase activity (GO:0016702) and oxylipin biosynthetic process (GO:0031408) by GO analysis. Oxidoreductase activity is closely related to ROS scavenging, and oxylipins regulate growth and responses to environmental stimuli of organisms, which plays a key role in dehydration and osmotic stress. Therefore, "Y1805"-specific *Tel3E01G270600* might be an important gene involved in the salt stress response.

TtLEA2-1 Cloning and Sequence Analysis

Using *Tel3E01G270600*-specific primers, a 453 bp cDNA fragment corresponding to *Tel3E01G270600* was amplified and cloned from *Tritipyrum* "Y1805" by PCR (Figure 1A) and named *TtLEA2-1*. The *TtLEA2-1* sequence had 97.37% identity to

TABLE 1 | Relative expression level (\log_2 fold change) of *Tel3E01G270600* under salt stress and recovery conditions in two wheat varieties.

Treatment	"Y1805"	"Chinese Spring"
Salt stress	7.93	0
Recovery	0	0

Tel3E01G270600, with only 11 bp nucleotides changes between them (**Supplementary Figure 1**). Therefore, TtLEA2-1 was similar to *Tel3E01G270600* according to their cDNA sequences.

According to bioinformatics analysis, TtLEA2-1 encoded 151 amino acids (aa). The TtLEA2-1 protein contained seven serine, four threonine, and two tyrosine residues, which could be protein kinase phosphorylation sites. Hydropathy plots predicted that TtLEA2-1 was predominantly hydrophilic, indicating it could play a key role in plant salt-stress tolerance (**Figure 1B**). The TtLEA2-1 protein had an LEA_2 conserved domain at 44–40 aa, and the region was located at the C-terminal (**Figure 1C**), which might participate in the formation of a homotype or heterodimer and transcription regulation.

A phylogenetic tree based on aa sequences of different species showed that TtLEA2-1 displayed maximum homology with *Th. elongatum* (CM022299.1, **Figure 2A**). Their aa sequence identity was 77.00%, and their conserved domain was very similar. The genetic distance of TtLEA2-1 with *Th. elongatum* was closer than *Triticum* crops. The phylogenetic tree of wheat LEA proteins was also constructed, and both TtLEA2-1 and *Tel3E01G270600* were clustered together into group 2 LEA proteins (**Figure 2B**). TtLEA2-1 showed higher similarity with *Tel3E01G270600* (*Th. elongatum*) and LEA2-10 (common wheat) than with other LEA proteins, and these were clustered in the same branch. Therefore, it was speculated that TtLEA2-1 could have a similarity and close genetic relationship with group 2 LEA protein of *Th. elongatum* in evolution and function.

Homology Modeling and Molecular Simulation of TtLEA2-1 Protein

The predicted model indicated that both N-terminal and C-terminal regions of TtLEA2-1 have an $\alpha + \beta$ -folding chain (consisting of one α -helix and some β -strands that run anti-parallel to each other) (**Figure 3A**). The models showed compatibility of 84.77% with At2g46140.1, indicating good quality models. Ramachandran plot validation of the protein signified its aptness since no residues were present in disallowed regions (**Figure 3B**). The RMSD of TtLEA2-1 protein reached a peak (0.7434 nm) at 218 picoseconds (ps) (**Figure 3C**). The RMSD curve arrived at equilibrium after 250 ps, with fluctuation keeping it in the range of 0.40–0.70 nm. These results demonstrated that TtLEA2-1 had reached the equilibrium state and its structure was stable.

Expression Patterns of *TtLEA2-1* Gene in "Y1805"

To investigate the spatial and temporal expression pattern of *TtLEA2-1*, we analyzed the expression levels of *TtLEA2-1* in roots under salt stress and recovery conditions and in various

tissues using qRT-PCR analysis. The relative expression level of the *TtLEA2-1* gene was the highest under salt stress in the roots of "Y1805," next was stems, and then leaves (**Figure 4A**). Its expression level in the roots was 4.76-fold and 8.55-fold higher than those of stems and leaves, respectively. In addition, the *TtLEA2-1* expression level was significantly (40.36-fold) higher than the control under salt stress in the roots. However, it dropped rapidly to the control level after recovery (**Figure 4B**). These results were consistent with the above transcriptome data, indicating that "Y1805"-specific *TtLEA2-1* expressed highly and sensitively in the roots under high salinity to adapt to salt stress.

Subcellular Localization of TtLEA2-1

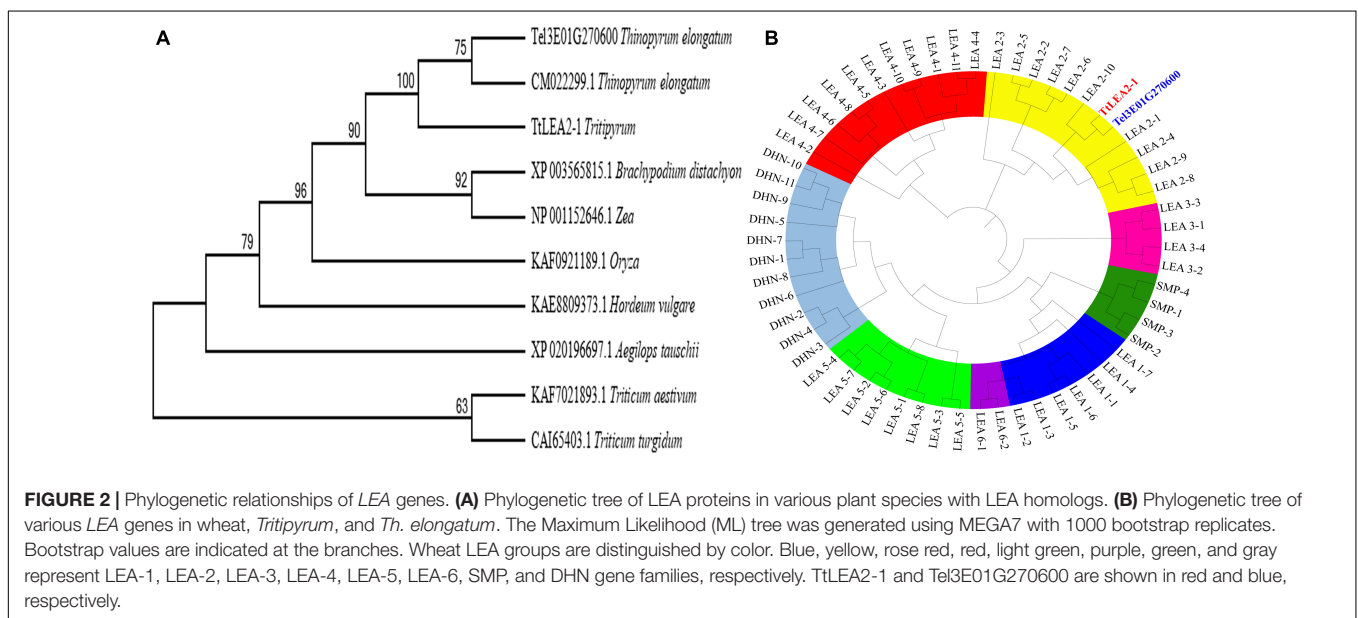
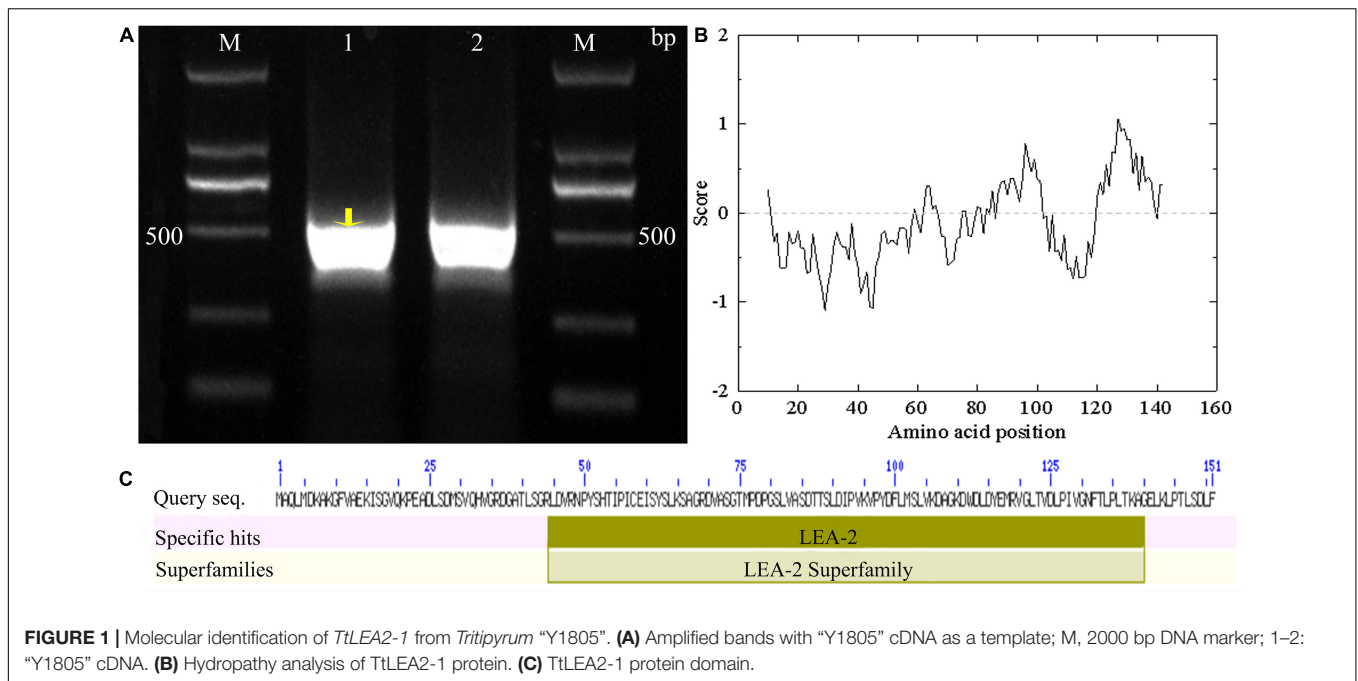
To determine the subcellular localization of TtLEA2-1, a fusion protein transiently expressing 35S-TtLEA2-1-GFP in *Oryza sativa* mesophyll protoplasts was produced. It was found that the fluorescence emitted by the fusion protein was localized to the nucleus and overlapped with the red nuclear mCherry signal (**Figure 5**). In addition, GFP signals were distributed throughout the cell, implying that TtLEA2-1 distributes in the whole cell. The results showed that TtLEA2-1 might contribute to transcription regulation or the protection of heredity substances and cellular components.

Interacting Protein Analysis of TtLEA2-1

We used the Y2H method to screen for proteins that interacted with TtLEA2-1 in the cDNA library. The pGBKT7-TtLEA2-1 vector was transformed into yeast Y2HGold cells for Y2H screening, and single clones that grew well on the DDO plate were chosen. There were white plaques on the DDO plate and sterile plaques on the QDO plate, indicating that TtLEA2-1 was a non-toxic and non-self-activating protein (**Supplementary Figure 2**). The pGBKT7-TtLEA2-1 and pGADT7-cDNA plasmids were co-transferred into yeast cells and cultured. After screening for defective media, preliminary screening on DDO plates, and then database comparison with QDO selection and sequencing, we found that 48 proteins interacted with TtLEA2-1. The reversion verification test found that after screening by DDO, QDO, and QDO/X auxotrophic plates, all 48 proteins contained interaction signals with TtLEA2-1 (**Figure 6A**).

Overall, 48 clones represented by blue plaques were confirmed by PCR and sequencing. Sequencing data and statistical results of proteins with the potential to interact with TtLEA2-1 are shown in **Supplementary Table 3**. By BLAST comparison, GO annotation, and PPI analysis of TtLEA2-1 interacting proteins, PPI occurred in 11 proteins (**Figures 6B,C**). Most of these were ribosomal proteins and were enriched in the process of protein synthesis. Among these proteins, the translation-related 40S ribosomal protein SA was the central node, suggesting that it might play a key role in the salt-stress response of "Y1805" (**Figures 6B,C**).

Twenty proteins could be annotated to known functional groups using KEGG pathway analysis. Half (10) of these proteins were enriched in "genetic information processing," three in "glycan biosynthesis and metabolism," three in "nuclear metabolism," two in "carbohydrate metabolism," one



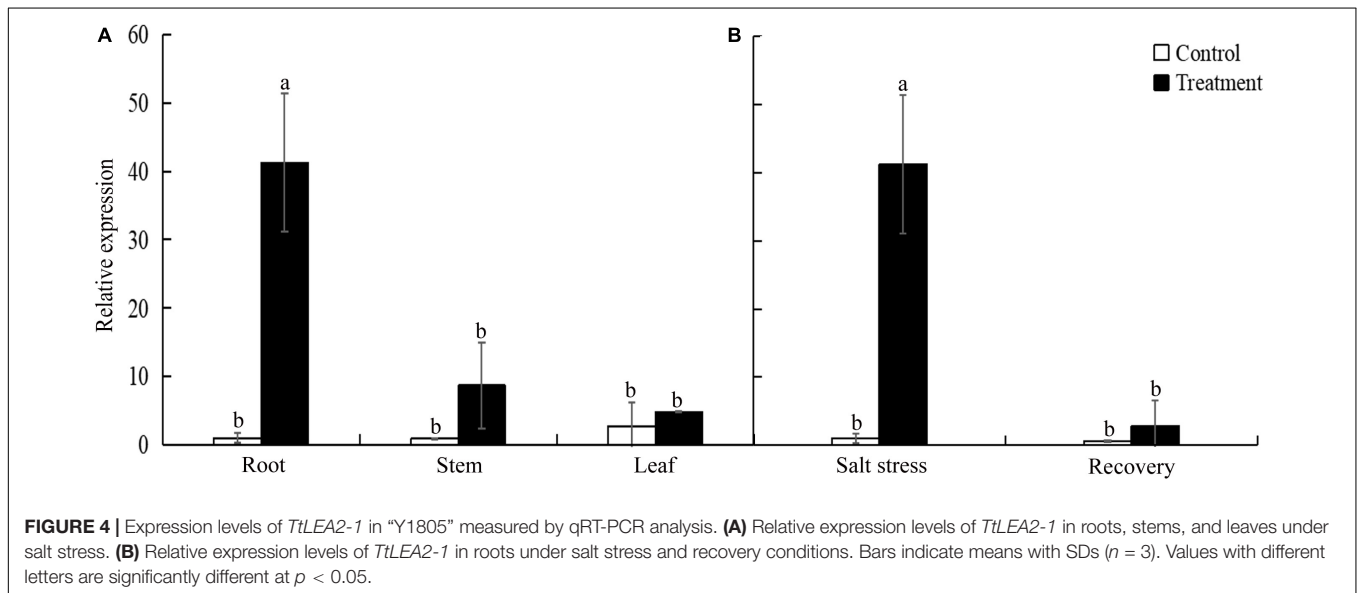
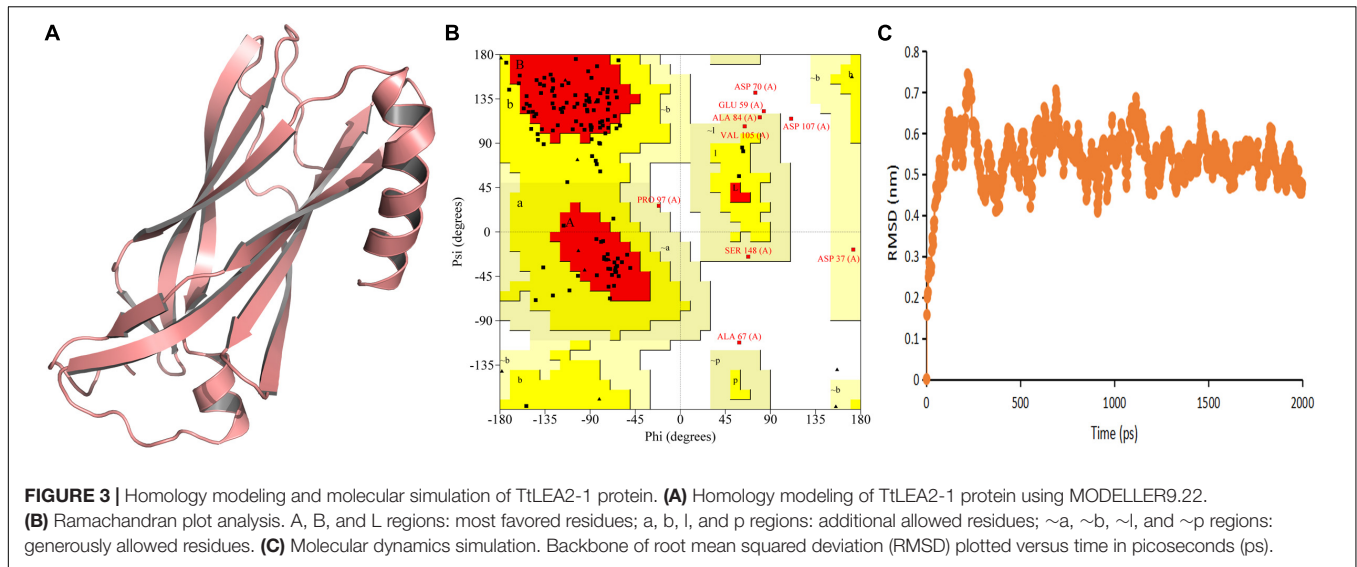
in “cellular process,” and one in “environmental information processing” (**Figure 6D**).

Coleoptile Transformation in Common Wheat

To investigate *TaLEA2-1* function, overexpressed *TaLEA2-1* was transformed in common wheat plants. The coleoptile tips of common wheat were cut to expose the meristem, and infected with *Agrobacteria* containing the *TaLEA2-1* gene. Transgenic positive plants were screened firstly by a LUYOR-3415RG hand-held lamp. Then, they were confirmed by multiplex PCR using

TaLEA2-1 specific primers and housekeeping *18S* gene primers. Two bands were amplified in lanes 1, 3, 4, 6, 8, 9, and 10, indicating that DNA was from transgenic plants (**Figure 7**). A single band from the housekeeping *18S* gene was found in lanes 2, 5, and 7, indicating that DNA was from non-transformed plants.

A total of 120 seedlings of common wheat “1718” with coleoptile lengths of 1.50, 2.00, and 2.50 cm were selected. It was found that the most suitable coleoptile length was 2.00 cm, and the transformation efficiency was 21.60% (**Figure 8A**). When the coleoptile length was 1.50 cm, transformation efficiency was only 11.90%. When the OD value of *Agrobacteria* cell density was 0.55



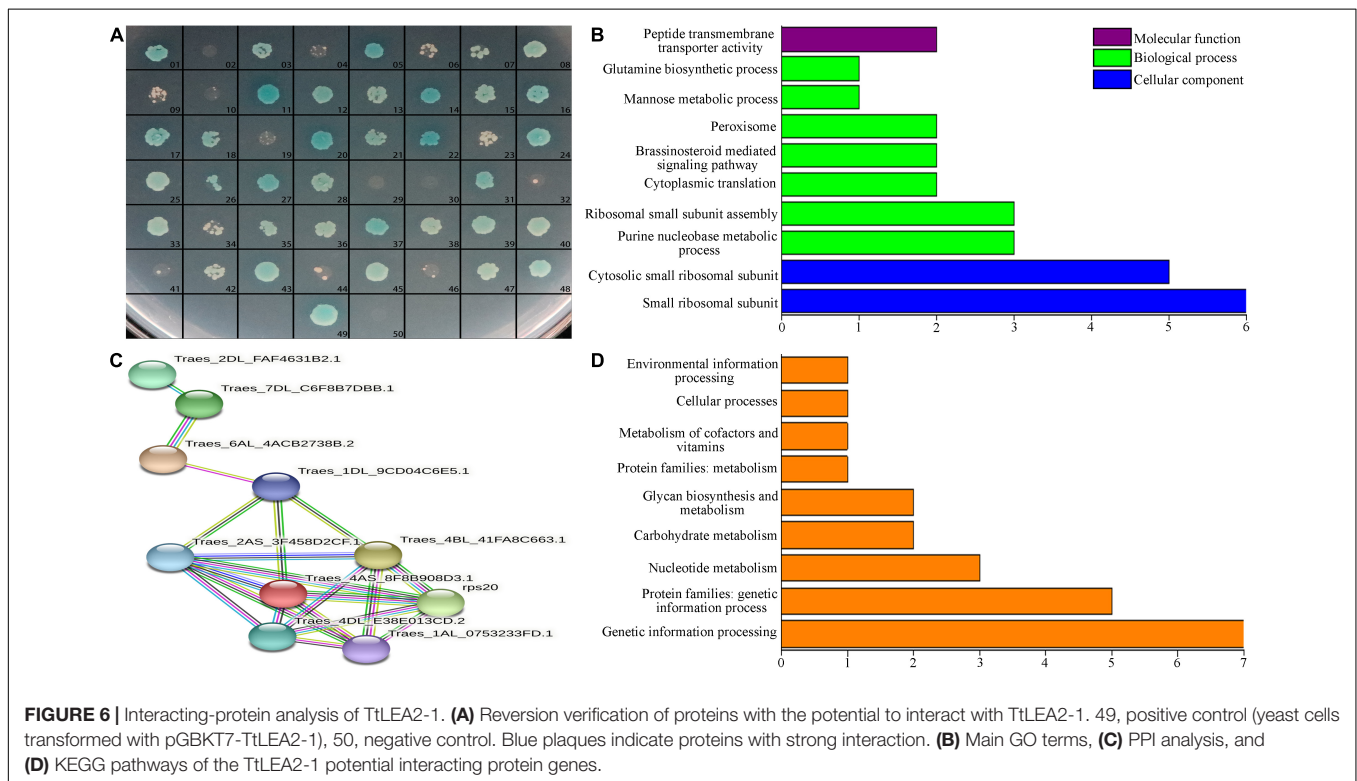
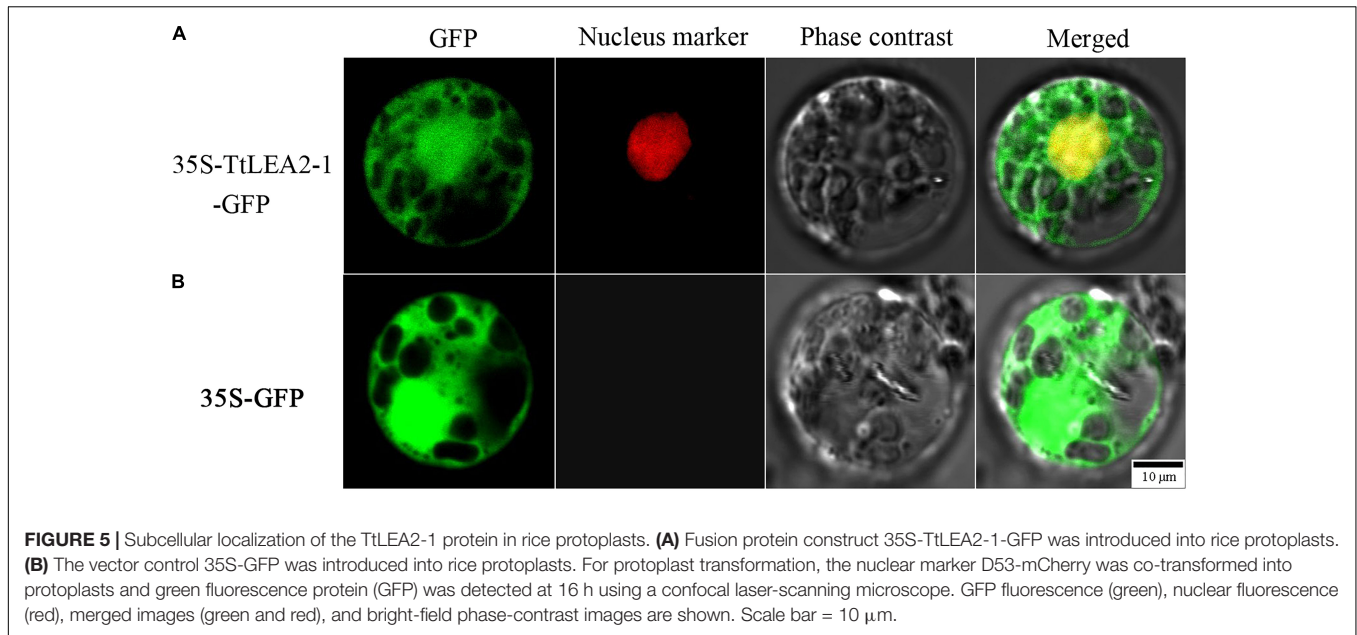
and 0.60, there was no significant difference in transformation efficiency, which was significantly higher than these of 0.50 and 0.65 OD values (Figure 8B). Therefore, transformation with an *Agrobacteria* cell density OD value of 0.55–0.60 was suitable for common wheat. Transformation efficiency was the highest under a vacuum pressure of 15 KPa and reached 22.16% (Figure 8C). With vacuum pressure falling, transformation efficiency decreased. Therefore, a coleoptile length of 2 cm, *Agrobacteria* cell density of 0.55–0.60 OD₆₀₀, and 15 KPa vacuum pressure were the best for the genetic transformation of common wheat “1718.”

Three common varieties “88,” “811,” and “1718” were transformed by the above transformation system. Their transformation efficiency was 43.15%, 36.18% and 21.98%, respectively (Figure 8D). This result indicated that the coleoptile transformation was robust and reproducible in common wheat.

Overexpression of *TaLEA2-1* Enhanced Salt Tolerance in Wheat

Under 250 mM NaCl stress, the leaves of transgenic wheat “1718” were less severely wilted than those of the wild type (WT) plants (Figures 9A–D). In addition, transgenic wheat “1718” displayed greater height and stronger roots than the WT plants, indicating that the *TaLEA2-1* gene conferred salt tolerance in transgenic wheat “1718” (Figures 9E–H).

Under normal conditions, there was no significant difference in root length or seedling height between WT and overexpression plants (Figures 10A,B). The root length and seedling height of overexpression lines were significantly higher than those of WT plants at the T2 (24 h after salt stress) and R1 (1 h after recovery) stages. Overexpression lines showed no significant changes in plant water content under salt stresses. However, plant water content of the WT fell significantly at the T1 (5 h after salt stress),



T2, and R1 stages (**Figure 10C**). These results showed that salt treatment had a greater inhibition effect on WT lines than on overexpression lines, and on roots than on seedlings.

The CAT activity of overexpression lines was higher than that of WT plants under normal and salt stress conditions. Overexpression lines were more sensitive to salt stress than WT plants. The CAT activity of overexpression lines reached a peak at the T2 stage, which was 1.90-fold that of the WT plants.

After recovery, the CAT activity of overexpression lines dropped rapidly (**Figure 10D**).

DISCUSSION

Salt stress is one of the major abiotic stresses affecting different crops and their yields worldwide (Bhagi et al., 2013). *LEAs* are

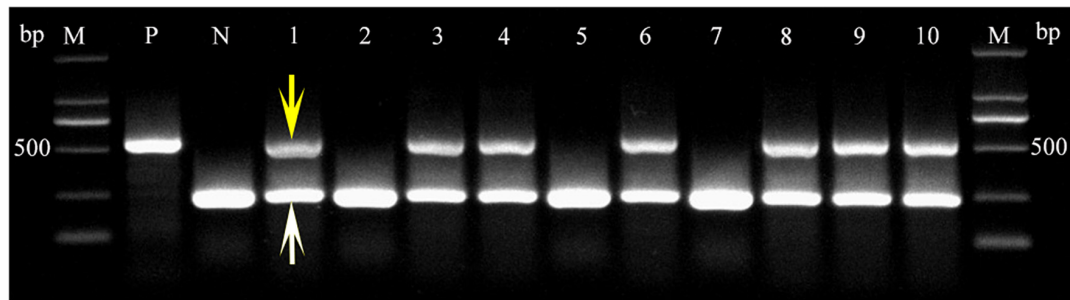


FIGURE 7 | PCR confirmation of transgenic plants harboring the *TtLEA2-1* gene. PCR detection of the *TtLEA2-1* gene in the genomic DNA of putative transgenic T_0 plant leaves. The 453 bp fragment of the amplified *TtLEA2-1* gene is indicated by a yellow arrow. A white arrow shows the band of the amplified housekeeping 18S gene. M, 2,000 bp DNA marker; lanes 1, 3, 4, 6, 8–10, transgenic plants; lanes 2, 5, and 7, non-transformed plants; P, positive control (*TtLEA2-1* recombinant plasmid); N, negative control (wild type DNA).

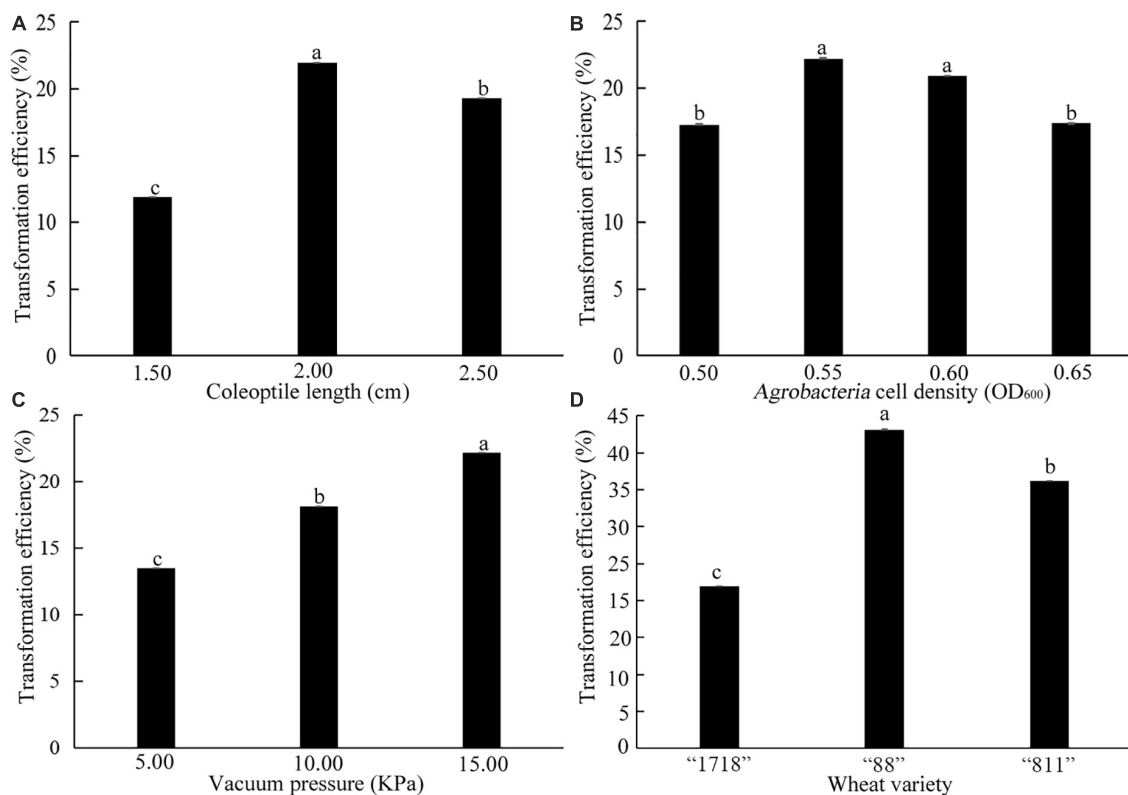
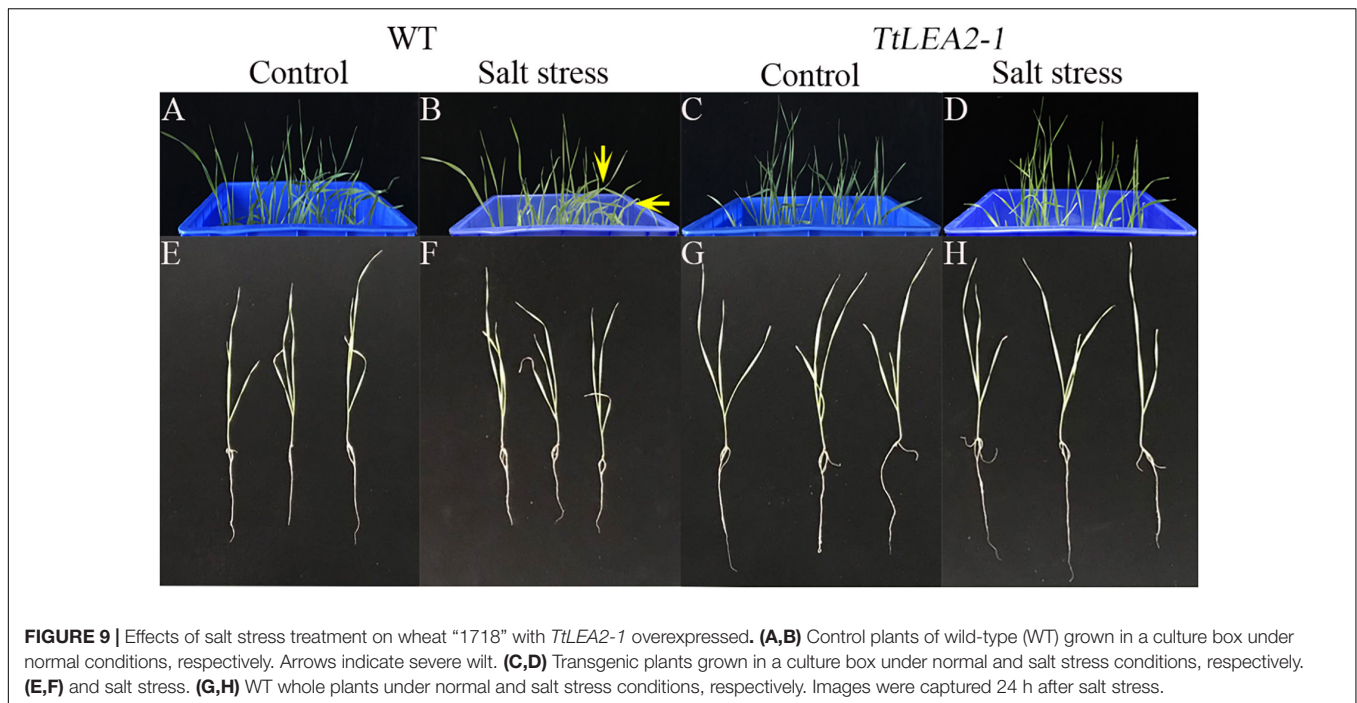


FIGURE 8 | Effects of coleoptile length (A), OD₆₀₀ value of *Agrobacterium* cell density (B), vacuum pressure (C), and wheat varieties (D) on transformation efficiency. The three common wheat varieties are "1718," "88," and "811." Bars indicate means with SDs ($n = 3$). Values with different letters are significantly different at $p < 0.05$.

genes that are closely related to abiotic stress tolerance, such as high salinity stress, drought, and low temperature (Rodríguez-Salazar et al., 2017). LEA protein is highly hydrophilic, which can protect cytoplasmic components and membrane stability under stresses, and prevent further damage to cell proteins (Hand et al., 2011; Hinch and Thalhammer, 2012; Arumingtyas et al., 2013; Furuki and Sakurai, 2016). Eight wheat *TaLEA* genes representing each group were introduced into *E. coli* and yeast to investigate their protective function under heat and

salt stress. *TaLEAs* enhanced the tolerance of *E. coli* and yeast to salt and heat, indicating that these proteins have protective functions in host cells under stress conditions (Liu et al., 2019). *JcLEA* from *Jatropha curcas* confers a high level of tolerance to dehydration and salinity in *Arabidopsis thaliana* (Liang et al., 2013). In this study, we cloned a novel *TtLEA2-1* gene from salt-tolerant *Triticum* "Y1805" under salt stress. *TtLEA2-1* is a hydrophilic protein with good stability, and rich in aspartic acid and serine, which is consistent with the previous description of



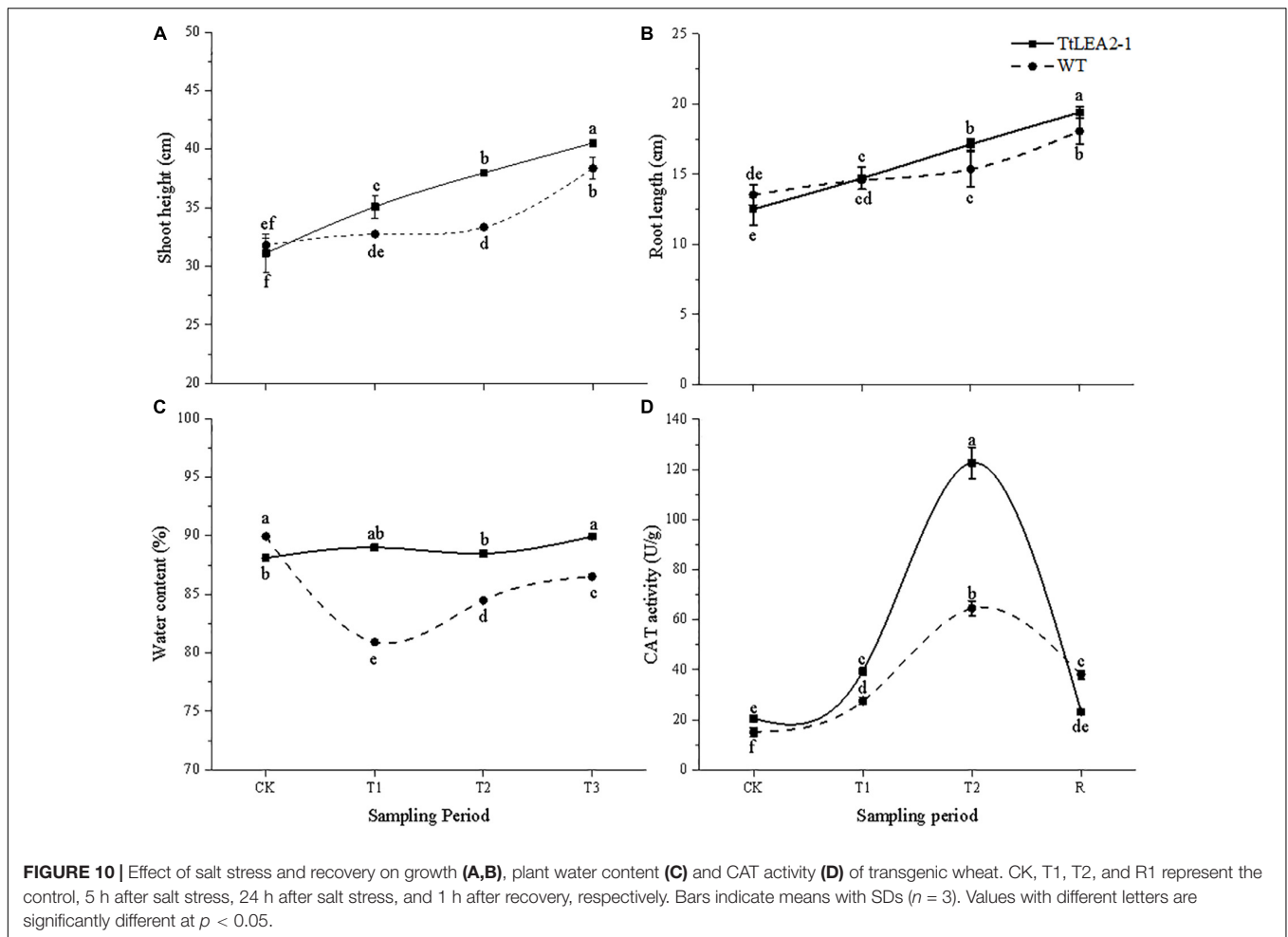
LEA proteins (Goyal et al., 2005). Molecular modeling reveals that LEA proteins from wheat have a conserved N-terminal domain, α -helix, and β -chain involved in DNA binding activity (Goyal et al., 2005; Sharma et al., 2021). Here, a good-quality model showed that both N-terminal and C-terminal regions had an $\alpha + \beta$ -folding chain. The model had the highest number of residues (74.00%) within the favored regions of the Ramachandran plot, making it a reliable 3D protein structure for *TtLEA2-1*. Meanwhile, the *TtLEA2-1* structure was stable by RMSD analysis. This model could pave the way for further functional and structural research of *TtLEA2-1*.

Late embryogenesis-abundant proteins of common wheat have been classified into eight groups based on sequence similarity and conserved domains (Liu et al., 2019). *TtLEA2-1* contains an LEA-2 domain based on the comparison of DNA and amino acid sequences. Moreover, phylogenetic analysis of wheat LEA proteins confirmed that *TtLEA2-1* is an LEA-2 protein. Among different groups of LEA proteins, group 2 LEA proteins are biosynthesized in response to salt stress (Allagulova et al., 2003). Group 2 LEAs confer transgenic rice (Ganguly et al., 2012), tobacco (Ju et al., 2021), and wheat (Sharma et al., 2021) with stress tolerance. Here, *TtLEA2-1* might originate from the E genome of *Th. elongatum* according to the transcriptome data. Phylogenetic analysis of LEA proteins from various species also showed that the gene had a close genetic relationship with *Th. elongatum*, indicating that *TtLEA2-1* should originate from the E genome of *Th. elongatum*.

The expression of LEA proteins can be induced by salt stress, drought, and abscisic acid, and is tissue-specific (Zan et al., 2020). Here, the relative expression level of the *TtLEA2-1* gene was the highest in the roots of “Y1805” under salt stress,

next was stems, and then leaves (Figure 4A). It was found that the root system was damaged directly and seriously in a high salt solution. In addition, the *TtLEA2-1* expression level in the roots was significantly higher than in the control under salt stress. However, it dropped rapidly to the control level after recovery (Figure 4B). These results were consistent with our transcriptome data and previous report (Zan et al., 2020). Therefore, *TtLEA2-1* was expressed highly and sensitively in the roots to adapt to salt stress.

Although different LEA proteins have different functions, all LEA proteins are widely involved in abiotic stress tolerance in plants (Dhar et al., 2019). GO analysis in *Brachypodium distachyon* demonstrated that LEAs are associated with in “response stimulus,” “developmental process,” “multicellular organismal process,” “multi-organism process,” “immune system process,” and “signaling” ontologies (Ma et al., 2020). LEA genes participate in the protective response of plants to abiotic stresses by reducing reactive oxygen species (Liang et al., 2019; Wang et al., 2021). The *LEA (DEHYDRIN3)* gene in grapevine callus is involved in osmotic regulation (Xu et al., 2020). In this work, *TtLEA2-1* interacting-proteins were enriched in “peroxisome,” “environmental information processing,” “carbohydrate metabolism,” and “glutamine biosynthetic process” categories, in agreement with previous studies (Liang et al., 2019; Ma et al., 2020; Xu et al., 2020; Wang et al., 2021). Moreover, the translation-related 40S ribosomal protein SA was the central node in PPI analysis, suggesting that it contributes to an efficient reorganization of protein-biosynthesizing machinery in “Y1805” cells (Wang et al., 2013; Saez-Vasquez and Delsený, 2019). *MsLEA-D34* was cloned from alfalfa (*Medicago sativa* L.). An ABA-responsive element (ABRE)-binding transcription factor directly binds to



the RY element in the *MsLEA-D34* promoter and activates its expression (Lv et al., 2021). Expression levels of several genes such as *ABF3*, *ABI5*, *NCED5*, and *NCED9* are markedly higher in Arabidopsis plants heterologously expressing *MsLEA4-4* compared to levels in the WT under osmotic stress (Jia et al., 2020). Here, novel *TtLEA2-1* interacting proteins related to brassinosteroid signaling, ethylene signaling, and “metabolism of cofactors and vitamins” were found, which may contribute to the salt-tolerance of “Y1805” (Supplementary Table 3).

Despite recent advances in wheat genomic resources, wheat remains one of the most challenging major cereals to genetically transform (Hayta et al., 2019). Biolistic particles (Wei et al., 2016) and *Agrobacterium*-mediated transformation (Cheng et al., 1997) are traditionally applied for genetic transformation in wheat. Anthers, microspores, immature embryos, embryonic calli, and inflorescences are often used as the explants for wheat genetic transformation. The application of these transformed tissues is greatly limited due to various obstacles (such as poor transformation efficiency, somatic variations, albino seedlings, and genotype-dependence) during regeneration in tissue culture (Ghosh et al., 2021). Cells in L1 and L2 layers at the summit of the apex are mitotically active and contribute to the developing shoot and floral structures (Simmonds, 1997). Coleoptile apical

meristems have strong meristematic ability and vitality in plants. In this work, the coleoptile tips of common wheat were cut to expose the meristem and then infected with *Agrobacteria* containing the target gene. A 2 cm coleoptile length, *Agrobacteria* cell density of 0.55–0.60 ($OD_{600 \text{ nm}}$), and 15 KPa vacuum pressure were the best parameters for the transformation of common wheat “1718.” Three common wheat varieties (“88,” “811,” and “1718”) were transformed with this transformation system. It was found that the transformation efficiency was up to 43.15% (Figure 8D). Therefore, this transformation system was robust and reproducible in wheat.

The difficulty of genetic transformation is the bottleneck restricting the development of gene engineering, genetics, breeding, and molecular biology in wheat. The coleoptile transformation of wheat does not depend on tissue culture, which avoids the influence of various factors (such as pollution, vitrification, browning, somaclonal variations, and albino seedlings) that occur during regeneration in tissue culture. An efficient wheat transformation system has now been established, providing the required platform for wheat genetics and breeding. To date, our protocol has been used in our laboratory to introduce more than 20 constructs into wheat. Therefore, this method was simple, time-saving, economical, and genotype-independent in

wheat transformation. In addition, this method could be applied to other crop species, especially graminaceous crops (e.g., barley, oats, rice, and corn). Furthermore, this protocol has been applied in the transformation of dicotyledonous species, such as hot peppers, with slight modification in our lab.

CONCLUSION

We screened a *Tritipyrum* “Y1805”-specific *LEA* gene because it was expressed highly and sensitively under salt stress using transcriptome analysis. A novel *TtLEA2-1* gene belonging to group 2 was cloned from salt-tolerant “Y1805.” *TtLEA2-1* contains a 453 bp open reading frame encoding a 151-amino-acid protein. *TtLEA2-1* showed maximum homology with *Th. elongatum* by phylogenetic analysis, indicating that *TtLEA2-1* originates from *Th. elongatum*. It is expressed mainly in the roots to adapt to salt stress. The *TtLEA2-1* gene was located in the whole cell. Overall, 48 candidate proteins that are thought to interact with *TtLEA2-1* were screened and confirmed by yeast two-hybrid analysis. These interacting proteins were mainly enriched in “genetic information processing,” “environmental information processing,” “glycan biosynthesis and metabolism,” and “carbohydrate metabolism” pathways. The translation-related 40S ribosomal protein SA was the central node by PPI analysis, suggesting that it might play a key role in the salt-stress response of “Y1805.” An efficient wheat transformation system has been established. A coleoptile length of 2 cm, an *Agrobacterium* cell density of 0.55–0.60 OD₆₀₀, and 15 KPa vacuum pressure were ideal for common wheat transformation, with an efficiency of up to 43.15%. *TtLEA2-1* conferred enhanced salt tolerance in transgenic wheat and may be a valuable gene for crop genetic modification.

DATA AVAILABILITY STATEMENT

The datasets presented in this study can be found in online repositories. The names of the repository/repositories and accession number(s) can be found below: NCBI; PRJNA769794.

REFERENCES

- Allagulova, C. R., Gimalov, F. R., Shakirova, F. M., and Vakhitov, V. A. (2003). The plant dehydrins: structure and putative functions. *Biochemistry* 68, 945–951. doi: 10.1023/A:1026077825584
- Amara, I., Zaidi, I., Masmoudi, K., Ludevid, D., Pagès, M., Goday, A., et al. (2014). Insights into late embryogenesis abundant (LEA) proteins in plants: from structure to the functions. *Am. J. Plant Sci.* 5, 3440–3455. doi: 10.4236/ajps.2014.522360
- Anders, S., and Huber, W. (2010). Differential expression analysis for sequence count data. *Genome Biol.* 11:R106. doi: 10.1038/npre.2010.4282.1
- Arumingtyas, E. L., Savitri, E. S., and Purwoningrahayu, R. D. (2013). Protein profiles and dehydrin accumulation in some soybean varieties (*Glycine max* L. merr) in drought stress conditions. *Am. J. Plant Sci.* 4, 134–141. doi: 10.4236/ajps.2013.41018

AUTHOR CONTRIBUTIONS

ZF, GG, and SZ conceived and designed the experiments. ZY, YM, YW, and LS performed the experiments. ZY, YW, and FH analyzed the data. JZ, GG, and QZ contributed reagents, materials, and analysis tools. ZY, GG, and SZ wrote the manuscript. All authors have read and approved the final manuscript.

FUNDING

This study was financially supported by the National Natural Science Foundation of China (31860380 and 32160442) and Science Foundation of Guizhou Province [(2018)5781 and (2019)1110].

ACKNOWLEDGMENTS

Special thanks are due to Litang Lv (Guizhou University, China) and Adam J. Lukaszewski (University of California Riverside, CA, United States) for the technical assistance in the experiments. We thank International Science Editing (<http://www.internationalscienceediting.com>) for editing this manuscript.

SUPPLEMENTARY MATERIAL

The Supplementary Material for this article can be found online at: <https://www.frontiersin.org/articles/10.3389/fpls.2022.830848/full#supplementary-material>

Supplementary Figure 1 | Alignment of *TtLEA2-1* from *Tritipyrum* “Y1805” and *Tel3E01G270600* from *Th. elongatum*. Gaps indicate different bases.

Supplementary Figure 2 | *TtLEA2-1* is a non-toxic and non-self-activating protein. Both of SD/–Leu/–Trp (DDO) plate and SD/–Ade/–His/–Leu/–Trp (QDO) plate have aseptic spots, indicating that the *TtLEA2-1* protein was toxic. DDO and QDO plates have plaques, indicating that the *TtLEA2-1* protein had self-activation activity. DDO have white plaques and QDO have sterile plaques, indicating that the *TtLEA2-1* protein had no self-activating activity.

- Bates, L. S., Waldren, R. P., and Teare, I. D. (1973). Rapid determination of free proline for water-stress studies. *Plant Soil* 39, 205–207. doi: 10.1007/BF00018060
- Battaglia, M., and Covarrubias, A. A. (2013). Late embryogenesis abundant (LEA) proteins in legumes. *Front. Plant Sci.* 4:190. doi: 10.3389/fpls.2013.00190
- Bhagi, P., Zhawar, V. K., and Gupta, A. K. (2013). Antioxidant response and *Lea* genes expression under salt stress and combined salt plus water stress in two wheat cultivars contrasting in drought tolerance. *Ind. J. Exp. Biol.* 51, 746–757. doi: 10.1109/JBHI.2013.2261819
- Bhalla, P. L. (2006). Genetic engineering of wheat—current challenges and opportunities. *Trends Biotechnol.* 24, 305–311. doi: 10.1016/j.tibtech.2006.04.008
- Borrill, P., Harrington, S. A., and Uauy, C. (2019). Applying the latest advances in genomics and phenomics for trait discovery in polyploid wheat. *Plant J.* 97, 56–72. doi: 10.1111/tpj.14150

- Cheng, M., Fry, J. E., Pang, S., Zhou, H., Hironaka, C. M., Duncan, D. R., et al. (1997). Genetic transformation of wheat mediated by *Agrobacterium tumefaciens*. *Plant Physiol.* 115, 971–980. doi: 10.1104/pp.115.3.971
- Cheng, Z., Zhang, X., Yao, W., Zhao, K., Liu, L., Fan, G., et al. (2021). Genome-wide search and structural and functional analyses for late embryogenesis-abundant (LEA) gene family in poplar. *BMC Plant Biol.* 21:110. doi: 10.1186/s12870-021-02872-3
- Choa, H. W., Shin, S., Song, K. D., Park, J. W., Choi, J. Y., Lee, H. K., et al. (2015). Molecular characterization and expression analysis of adrenergic receptor beta 2 (*ADRB2*) gene before and after exercise in the horse. *Asian Australas. J. Anim. Sci.* 28, 686–690. doi: 10.5713/ajas.14.0575
- Cuevas-Velazquez, C. L., Rendon-Luna, D. F., and Covarrubias, A. A. (2014). Dissecting the cryoprotection mechanisms for dehydrins. *Front. Plant Sci.* 5:583. doi: 10.3389/fpls.2014.00583
- Debnath, M., Pandey, M., and Bisen, P. S. (2011). An omics approach to understand the plant abiotic stress. *Omics* 15, 739–762. doi: 10.1089/omi.2010.0146
- Dhar, S., Bhattacharya, S., Banerjee, A., and Ray, S. (2019). Evolutionary, gene ontology and physiochemical relationships in LEA proteins of *Oryza sativa indica*: detailed computational sequence-based insight. *Plant Gene* 21:100218. doi: 10.1016/j.plgene.2019.100218
- Eswar, N., Webb, B., Marti-Renom, M. A., Madhusudhan, M. S., Eramian, D., Shen, M. Y., et al. (2006). Comparative protein structure modeling using Modeller. *Curr. Protoc. Bioinform.* 5, 1–47. doi: 10.1002/0471250953.bi0506s15
- Filho, G. A. D. S., Ferreira, B. S., Dias, J. M., Queiroz, K. S., Branco, A. T., Bressan-Smith, R. E., et al. (2003). Accumulation of SALT protein in rice plants as a response to environmental stresses. *Plant Sci.* 164, 623–628. doi: 10.1016/S0168-9452(03)00014-1
- Furuki, T., and Sakurai, M. (2016). Group 3 LEA protein model peptides protect enzymes against desiccation stress. *Biochim. Biophys. Acta* 1864, 1237–1243. doi: 10.1016/j.bbapap.2016.04.012
- Ganguly, M., Datta, K., Roychoudhury, A., Gayen, D., Sengupta, D. N., and Datta, S. K. (2012). Overexpression of *Rab16A* gene in indica rice variety for generating enhanced salt tolerance. *Plant Signal. Behav.* 7, 502–509. doi: 10.4161/psb.19646
- Ghosh, A., Igamberdiev, A. U., and Debnath, S. C. (2021). Tissue culture-induced DNA methylation in crop plants: a review. *Mol. Biol. Rep.* 48, 823–841. doi: 10.1007/s11033-020-06062-6
- Goyal, K., Walton, L. J., and Tunnacliffe, A. (2005). LEA proteins prevent protein aggregation due to water stress. *Biochem. J.* 388, 151–157. doi: 10.1042/BJ20041931
- Hand, S. C., Menze, M. A., Toner, M., Boswell, L., and Moore, D. (2011). LEA proteins during water stress: not just for plants anymore. *Annu. Rev. Physiol.* 73, 115–134. doi: 10.1146/annurev-physiol-012110-142203
- Hanin, M., Brini, F., Ebel, C., Toda, Y., Takeda, S., and Masmoudi, K. (2011). Plant dehydrins and stress tolerance: versatile proteins for complex mechanisms. *Plant Signal. Behav.* 6, 1503–1509. doi: 10.4161/psb.6.10.17088
- Hayta, S., Smedley, M. A., Demir, S. U., Blundell, R., Hinchliffe, A., Atkinson, N., et al. (2019). An efficient and reproducible *Agrobacterium*-mediated transformation method for hexaploid wheat (*Triticum aestivum* L.). *Plant Methods* 15:121. doi: 10.1186/s13007-019-0503-z
- Hess, B., Kutzner, C., Van, D. S. D., and Lindahl, E. (2008). GROMACS 4: algorithms for highly efficient, load-balanced, and scalable molecular simulation. *J. Chem. Theory Comput.* 4, 435–447. doi: 10.1021/ct700301q
- Hincha, D. K., and Thalhammer, A. (2012). LEA proteins: IDPs with versatile functions in cellular dehydration tolerance. *Biochem. Soc. Trans.* 40, 1000–1003. doi: 10.1042/BST20120109
- Hirayama, T., and Shinozaki, K. (2010). Research on plant abiotic stress responses in the post-genome era: past, present and future. *Plant J.* 61, 1041–1052. doi: 10.1111/j.1365-313x.2010.04124.x
- Hu, T. Z., Zhou, N., Fu, M. L., Qin, J., and Huang, X. Y. (2016). Characterization of OsLEA1a and its inhibitory effect on the resistance of *E. coli* to diverse abiotic stresses. *Int. J. Biol. Macromol.* 91, 1010–1017. doi: 10.1016/j.ijbiomac.2016.06.056
- Huang, L. P., Zhang, M. Y., Jia, J., Zhao, X. X., Huang, X. X., Ji, E., et al. (2018). An atypical late embryogenesis abundant protein OsLEA5 plays a positive role in ABA-induced antioxidant defense in *Oryza sativa* L. *Plant Cell Physiol.* 59, 916–929. doi: 10.1093/pcp/pcy035
- Jia, H., Wang, X., Shi, Y., Wu, X., Wang, Y., Liu, J., et al. (2020). Overexpression of *Medicago sativa* *LEA4-4* can improve the salt, drought, and oxidation resistance of transgenic *Arabidopsis*. *PLoS One* 15:e234085. doi: 10.1371/journal.pone.0234085
- Ju, H., Li, D., Li, D., Yang, X., and Liu, Y. (2021). Overexpression of ZmDHN11 could enhance transgenic yeast and tobacco tolerance to osmotic stress. *Plant Cell Rep.* 40, 1723–1733. doi: 10.1007/s00299-021-02734-0
- Jyothsnakumari, G., Thippeswamy, M., Veeranagamallaiah, G., and Sudhakar, C. (2009). Differential expression of LEA proteins in two genotypes of mulberry under salinity. *Biol. Plantarum* 53, 145–150. doi: 10.1007/s10535-009-0022-2
- Kumar, S., Stecher, G., and Tamura, K. (2016). MEGA7: molecular evolutionary genetics analysis version 7.0 for bigger datasets. *Mol. Biol. Evol.* 33, 1870–1874. doi: 10.1093/molbev/msw054
- Liang, J., Zhou, M. Q., Zhou, X., Jin, Y. J., Xu, M., and Lin, J. (2013). JcLEA, a novel LEA-like protein from *Jatropha curcas*, confers a high level of tolerance to dehydration and salinity in *Arabidopsis thaliana*. *PLoS One* 8:e83056. doi: 10.1371/journal.pone.0083056
- Liang, Y., Kang, K., Gan, L., Ning, S. B., Xiong, J. Y., Song, S. Y., et al. (2019). Drought-responsive genes, late embryogenesis abundant group3 (*LEA3*) and vicinal oxygen chelate, function in lipid accumulation in *Brassica napus* and *Arabidopsis* mainly via enhancing photosynthetic efficiency and reducing ROS. *Plant Biotechnol. J.* 17, 2123–2142. doi: 10.1111/pbi.13127
- Liu, H., Xing, M. Y., Yang, W. B., Mu, X. Q., Wang, X., Lu, F., et al. (2019). Genome-wide identification of and functional insights into the late embryogenesis abundant (*LEA*) gene family in bread wheat (*Triticum aestivum*). *Sci. Rep.* 9:13375. doi: 10.1038/s41598-019-49759-w
- Liu, Y., Wang, L., Jiang, S. S., Pan, J. W., Cai, G. H., and Li, D. Q. (2014). Group 5 LEA protein, *ZmLEA5C*, enhance tolerance to osmotic and low temperature stresses in transgenic tobacco and yeast. *Plant Physiol. Biochem.* 84, 22–31. doi: 10.1016/j.plaphy.2014.08.016
- Lovell, S. C., Davis, I. W., Arendall, W. B. 3rd., Bakker, P. I. W., Word, J. M., Prisant, M. G., et al. (2003). Structure validation by Ca geometry: Φ , Ψ and $C\beta$ deviation. *Proteins: Struct. Funct. Genet.* 50, 437–450. doi: 10.1002/prot.10286
- Luo, D., Hou, X. M., Zhang, Y. M., Meng, Y. C., Zhang, H. F., Liu, S. Y., et al. (2019). *CaDHN5*, a dehydrin gene from pepper, plays an important role in salt and osmotic stress responses. *Int. J. Mol. Sci.* 20:1989. doi: 10.3390/ijms20081989
- Lv, A. M., Su, L. T., Wen, W. W., Fan, N. N., Zhou, P., and An, Y. (2021). Analysis of the function of the alfalfa *Mslea-D34* gene in abiotic stress responses and flowering time. *Plant Cell Physiol.* 62, 28–42. doi: 10.1093/pcp/pcaa121
- Ma, L. T., Zhu, T., Wang, H. R., Zhou, H., Shao, L. L., Ding, Q., et al. (2020). Genome-wide identification, phylogenetic analysis and expression profiling of the late embryogenesis-abundant (LEA) gene family in *Brachypodium distachyon*. *Funct. Plant Biol.* 48, 386–401. doi: 10.1071/FP20143
- Margiotta, B., Colaprico, G., Urbano, M., Veronico, G., Tommasi, F., and Tomaselli, V. (2020). Halophile wheatgrass *Thinopyrum elongatum* (Host) D.R. Dewey (*poaceae*) in three Apulian coastal wetlands: vegetation survey and genetic diversity. *Plant Biosyst.* 10, 1–31. doi: 10.1080/11263504.2020.1829732
- Park, S. C., Kim, Y. H., Jeong, J. C., Kim, C. Y., Lee, H. S., Bang, J. W., et al. (2011). Sweet potato late embryogenesis abundant 14 (*IbLEA14*) gene influences lignification and increases osmotic- and salt stress-tolerance of transgenic calli. *Planta* 233, 621–634. doi: 10.1007/s00425-010-1326-3
- Peng, Z., Wang, Y. Q., Geng, G. D., Yang, R., Yang, Z. F., Yang, C. M., et al. (2022). Comparative analysis of physiological, enzymatic, and transcriptomic responses revealed mechanisms of salt tolerance and recovery in *Tritipyrum*. *Front. Plant Sci.* 12:800081. doi: 10.3389/fpls.2021.800081
- Qiao, L. X., Jiang, P. P., Tang, Y. Y., Pan, L. L., Ji, H. C., Zhou, W. J., et al. (2021). Characterization of *AhLea-3* and its enhancement of salt tolerance in transgenic peanut plants. *Electro. J. Biotechnol.* 49, 42–49. doi: 10.1016/j.ejbt.2020.10.006
- Rahman, L. N., Smith, G. S. T., Bamm, V. V., Voyer-Grant, J. A. M., Moffatt, B. A., Dutcher, J. R., et al. (2011). Phosphorylation of *Thellungiella salsuginea* dehydrins TsDHN-1 and TsDHN-2 facilitates cation-induced conformational changes and actin assembly. *Biochemistry* 50, 9587–9604. doi: 10.1021/bi201205m
- Risacher, T., Craze, M., Bowden, S., Paul, W., and Barsby, T. (2009). Highly efficient *Agrobacterium*-mediated transformation of wheat via in planta inoculation. *Methods Mol. Biol.* 478, 115–124. doi: 10.1007/978-1-59745-379-0_7
- Rodriguez-Salazar, J., Moreno, S., and Espin, G. (2017). LEA proteins are involved in cyst desiccation resistance and other abiotic stresses in *Azotobacter vinelandii*. *Cell Stress Chaperones* 22, 397–408. doi: 10.1007/s12192-017-0781-1

- Rorat, T. (2006). Plant dehydrins: tissue location, structure and function. *Cell. Mol. Biol. Lett.* 11, 536–556. doi: 10.2478/s11658-006-0044-0
- Rosales, R., Romero, I., Escribano, M. I., Merodio, C., and Sanchez-Ballesta, M. T. (2014). The crucial role of Φ - and K-segments in the in vitro functionality of *Vitis vinifera* dehydrin DHN1a. *Phytochemistry* 108, 17–25. doi: 10.1016/j.phytochem.2014.10.006
- Saez-Vasquez, J., and Delseny, M. (2019). Ribosome biogenesis in plants: from functional 45S ribosomal DNA organization to ribosome assembly factors. *Plant Cell* 31, 1945–1967. doi: 10.1105/tpc.18.00874
- Sharma, A. D., Rakhra, G., and Vyas, D. (2021). Expression analysis and molecular modelling of hydrophilin LEA-2-like gene from wheat. *Plant Cell Rep.* 40, 1723–1733. doi: 10.1007/s40502-021-00615-y
- Simmonds, J. A. (1997). Mitotic activity in wheat shoot apical meristems: effect of dissection to expose the apical dome. *Plant Sci.* 130, 217–225. doi: 10.1016/s0168-9452(97)00206-9
- Thalhammer, A., and Hinch, D. K. (2013). “The function and evolution of closely related COR/LEA (cold-regulated/late embryogenesis abundant) proteins in *Arabidopsis thaliana*,” in *Plant and Microbe Adaptations to Cold in a Changing World*, eds R. Imai, M. Yoshida, and N. Matsumoto (Boston, MA: Springer), 89–105.
- Tolleter, D., Hinch, D. K., and Macherel, D. (2010). A mitochondrial late embryogenesis abundant protein stabilizes model membranes in the dry state. *Biochim. Biophys. Acta* 1798, 1926–1933. doi: 10.1016/j.bbame.2010.06.029
- Trapnell, C., Williams, B. A., Pertea, G., Mortazavi, A., Kwan, G., Baren, M. J. V., et al. (2010). Transcript assembly and abundance estimation from RNA-Seq reveals thousands of new transcripts and switching among isoforms. *Nat. Biotechnol.* 28, 511–515. doi: 10.1038/nbt.1621
- Wang, J., Lan, P., Gao, H., Zheng, L., Li, W., and Schmidt, W. (2013). Expression changes of ribosomal proteins in phosphate- and iron-deficient *Arabidopsis* roots predict stress-specific alterations in ribosome composition. *BMC Genomics* 14:783. doi: 10.1186/1471-2164-14-783
- Wang, K., Riaz, B., and Ye, X. G. (2018). Wheat genome editing expedited by efficient transformation techniques: progress and perspectives. *Crop J.* 6, 22–31. doi: 10.1016/j.cj.2017.09.009
- Wang, Z. D., Zhang, Q., Qin, J., Xiao, G. S., Zhu, S. S., and Hu, T. Z. (2021). *OsLEA1a* overexpression enhances tolerance to diverse abiotic stresses by inhibiting cell membrane damage and enhancing ROS scavenging capacity in transgenic rice. *Funct. Plant Biol.* 48, 860–870. doi: 10.1071/FP20231
- Wei, X., Shen, F., Hong, Y., Rong, W., Du, L., Liu, X., et al. (2016). The wheat calcium-dependent protein kinase TaCPK7-D positively regulates host resistance to sharp eyespot disease. *Mol. Plant Pathol.* 17, 1252–1264. doi: 10.1111/mpp.12360
- Wingen, L. U., West, C., Leverington, W. M., Collier, S., Orford, S., Goram, R., et al. (2017). Wheat landrace genome diversity. *Genetics* 205, 1657–1676. doi: 10.1534/genetics.116.194688
- Xu, M. L., Tong, Q., Wang, Y., Wang, Z. M., Xu, G. Z., Elias, G. K., et al. (2020). Transcriptomic analysis of grapevine *LEA* gene family in response to osmotic and cold stress, and functional analyses of *VamDHN3* gene. *Plant Cell Physiol.* 61, 4–27. doi: 10.1093/pcp/pcaa004
- Yoo, S. D., Cho, Y. H., and Sheen, J. (2007). *Arabidopsis* mesophyll protoplasts: a versatile cell system for transient gene expression analysis. *Nat. Protoc.* 2, 1565–1572. doi: 10.1038/nprot.2007.199
- Yuan, W. Y., and Tomita, M. (2015). *Thinopyrum ponticum* chromatin-integrated wheat genome shows salt-tolerance at germination stage. *Int. J. Mol. Sci.* 16, 4512–4517. doi: 10.3390/ijms16034512
- Zan, T., Li, L. Q., Li, J. T., Zhang, L., and Li, X. J. (2020). Genome-wide identification and characterization of late embryogenesis abundant protein-encoding gene family in wheat: evolution and expression profiles during development and stress. *Gene* 736:144422. doi: 10.1016/j.gene.2020.144422

Conflict of Interest: The authors declare that the research was conducted in the absence of any commercial or financial relationships that could be construed as a potential conflict of interest.

Publisher's Note: All claims expressed in this article are solely those of the authors and do not necessarily represent those of their affiliated organizations, or those of the publisher, the editors and the reviewers. Any product that may be evaluated in this article, or claim that may be made by its manufacturer, is not guaranteed or endorsed by the publisher.

Copyright © 2022 Yang, Mu, Wang, He, Shi, Fang, Zhang, Zhang, Geng and Zhang. This is an open-access article distributed under the terms of the Creative Commons Attribution License (CC BY). The use, distribution or reproduction in other forums is permitted, provided the original author(s) and the copyright owner(s) are credited and that the original publication in this journal is cited, in accordance with accepted academic practice. No use, distribution or reproduction is permitted which does not comply with these terms.