



Biogeographic Population Structure of Chimeric Blades of *Porphyra* in the Northeast Atlantic Reveals Southern Rich Gene Pools, Introgression and Cryptic Plasticity

Elena Varela-Álvarez^{1*}, Patrick G. Meirmans², Michael D. Guiry³ and Ester A. Serrão¹

¹ CCMAR Centro de Ciências do Mar, CIMAR, Universidade do Algarve, Faro, Portugal, ² Institute for Biodiversity and Ecosystem Dynamics, University of Amsterdam, Amsterdam, Netherlands, ³ AlgaeBase, Ryan Institute, National University of Ireland, Galway, Ireland

OPEN ACCESS

Edited by:

Gwenaél Piganeau,
UMR 7232 Biologie Intégrative des
Organismes Marins (BIOM), France

Reviewed by:

Aurélien De Jode,
University of Gothenburg, Sweden
Giuseppe C. Zuccarello,
Victoria University of Wellington,
New Zealand

*Correspondence:

Elena Varela-Álvarez
evarela@ualg.pt

Specialty section:

This article was submitted to
Marine and Freshwater Plants,
a section of the journal
Frontiers in Plant Science

Received: 19 November 2021

Accepted: 04 February 2022

Published: 24 February 2022

Citation:

Varela-Álvarez E, Meirmans PG,
Guiry MD and Serrão EA (2022)
Biogeographic Population Structure
of Chimeric Blades of *Porphyra*
in the Northeast Atlantic Reveals
Southern Rich Gene Pools,
Introgression and Cryptic Plasticity.
Front. Plant Sci. 13:818368.
doi: 10.3389/fpls.2022.818368

The genus *Porphyra sensu lato* (Bangiaceae, Rhodophyta), an important seaweed grown in aquaculture, is the most genetically diverse group of the Class Bangiophyceae, but has poorly understood genetic variability linked to complex evolutionary processes. Genetic studies in the last decades have largely focused on resolving gene phylogenies; however, there is little information on historical population biogeography, structure and gene flow in the Bangiaceae, probably due to their cryptic nature, chimerism and polyploidy, which render analyses challenging. This study aims to understand biogeographic population structure in the two abundant *Porphyra* species in the Northeast Atlantic: *Porphyra dioica* (a dioecious annual) and *Porphyra linearis* (protandrous hermaphroditic winter annual), occupying distinct niches (seasonality and position on the shore). Here, we present a large-scale biogeographic genetic analysis across their distribution in the Northeast Atlantic, using 10 microsatellites and cpDNA as genetic markers and integrating chimerism and polyploidy, including simulations considering alleles derived from different ploidy levels and/or from different genotypes within the chimeric blade. For *P. linearis*, both markers revealed strong genetic differentiation of north-central eastern Atlantic populations (from Iceland to the Basque region of Northeast Iberia) vs. southern populations (Galicia in Northwest Iberia, and Portugal), with higher genetic diversity in the south vs. a northern homogenous low diversity. For *P. dioica*, microsatellite analyses also revealed two genetic regions, but with weaker differentiation, and cpDNA revealed little structure with all the haplotypes mixed across its distribution. The southern cluster in *P. linearis* also included introgressed individuals with cpDNA from *P. dioica* and a winter form of *P. dioica* occurred spatially intermixed with *P. linearis*. This third entity had a similar morphology and seasonality as *P. linearis* but genomes (either nuclear or chloroplast) from *P. dioica*. We hypothesize a northward colonization from southern Europe (where the ancestral populations reside and host most of the gene pool of these species). In *P. linearis* recently established

populations colonized the north resulting in homogeneous low diversity, whereas for *P. dioica* the signature of this colonization is not as obvious due to hypothetical higher gene flow among populations, possibly linked to its reproductive biology and annual life history.

Keywords: red algae, plant chimera, polyploid, nori, biogeography

INTRODUCTION

Ancient evolutionary lineages are more likely to retain traits and imprints of complex evolutionary histories that challenge the understanding of present population structures in extant species. An example is the case of the Bangiales, a distinctive order that represents an ancient lineage (e.g., Blouin et al., 2011) of morphologically simple red algae prone to complex genomic variability due to chimerism and mixoploidy (Varela-Álvarez et al., 2021). Fossil evidence supports this group as the oldest multicellular eukaryotes with sexual reproduction (Butterfield, 2000), and molecular dating indicates that they diversified approximately 250 million years ago from an origin along eastern Gondwanaland (current New Zealand and Australia), or from the Northwest Pacific (Yang et al., 2018), from where they spread worldwide (Xu et al., 2017). The species currently present in the North Atlantic have been hypothesized to originate from vicariant speciation driven by the Bering Strait (see Lindstrom and Cole, 1993; Bray et al., 2007; Kucera and Saunders, 2012; Mols-Mortensen et al., 2014). More specifically, *Porphyra umbilicalis* Kützinger (Bangiaceae, Rhodophyta) from the Northwest Atlantic has been proposed as originating from Northeast Atlantic refugia by post-glacial colonization (Teasdale and Klein, 2010; Blouin and Brawley, 2012; Eriksen et al., 2016). Species of Bangiaceae (Bangiales, Rhodophyta) occur presently on intertidal and subtidal areas of coasts around the planet, visible as the gametophyte phase (n) of the life cycle, whereas their sporophytic phase (known as the “conchocelis phase,” 2n) consists of microscopic filaments that are extremely difficult to find in nature (Conway and Cole, 1977; Varela-Álvarez et al., 2018b). The gametophytes of some species form the most valuable seaweed aquaculture crop (mostly known as “nori” and with a retail value considered to be in excess of \$1.3 billion per year, Blouin et al., 2011), which has been harvested and/or cultivated mostly in Japan, China and Korea for more than 1000 years.

Taxonomic complexity and cryptic diversity are widely reported in the family Bangiaceae. Recent taxonomic revisions (Sutherland et al., 2011; Sánchez et al., 2014) created multiple new genera and these and other molecular studies (e.g., Kucera and Saunders, 2012; Mols-Mortensen et al., 2012; Guillemin et al., 2016; Dumilag and Monotilla, 2018; Reddy et al., 2018) have revealed an unexpectedly high species diversity within the order Bangiales, currently numbering 186 species (Guiry and Guiry, 2021). Besides, in Sutherland et al. (2011) approximately half of 126 bladed samples included in the analysis were undescribed or uncertain. Beyond such studies at species level, their population structure and biogeography remain unclear below species level. Understanding population structure is an

important tool to understand the conundrum (why so many species have evolved on so few morphological types) of cryptic diversity within the Bangiaceae, including inferring roles of hybridization, introgression, convergent evolution under similar selective pressures or historical events. Such processes can be inferred using a combination of molecular analyses across species geographical distributions.

Several challenges influence the population genetic structure in Bangiaceae, besides crypticity. Crypticity is a challenge for population studies because it is essential to distinguish each species to analyze population structure within species. In addition, some species display self-fertilization and asexual reproduction (Miura et al., 1979; Fujio et al., 1985, 1987; Gil-Kodaka et al., 1988). Another challenge is the presence of multiple alleles in supposedly haploid gametophytic blades, which can be influenced by divergent partial or complete chromosome copies (Fujio et al., 1988; Varela-Álvarez et al., 2018b, 2021), in chimeric blades (Lindstrom, 1993; Varela-Álvarez et al., 2021) that retain multiple alleles from the conchospores that originated them.

The genus *Porphyra* (hereafter “*Porphyra sensu lato*” means all bladed taxa of the Bangiaceae”) is a chimeric system in multiple ways. When the sporophyte produces a conchospore, meiosis forms a tetrad consisting of the four meiotic products. These four cells develop together into a single leafy gametophytic thallus through successive mitotic divisions. Therefore, each gametophytic blade is composed of cells with different genetic compositions (Ohme and Miura, 1988).

Recently, using flow cytometry and microsatellite analyses, we found multiple genome sizes and multiple alleles at several loci in gametophytic blades of several *Porphyra* species from Portugal (Varela-Álvarez et al., 2018b). These results indicate the presence of several cytotype combinations, not only within populations, but also within individuals, where gametophytic blades can either have a single ploidy level or combined ploidies (mixoploids). Allopolyploids and diploidization have also been found in Asian species of *Porphyra* (e.g., Niwa and Sakamoto, 2010; Niwa et al., 2010, 2018; Zhong and Yan, 2020), and have been related to hybridization and introgression between closely related species (e.g., Niwa and Sakamoto, 2010; Niwa et al., 2010; Niwa et al., 2018). Hybridization and introgression have also been reported for species from the Northeast Atlantic (Mols-Mortensen et al., 2012). The detection of introgression, mixoploidy, chimerism and cryptic diversity was impeded by the previous lack of molecular markers allowing sufficient resolution at both the individual and population level for European species of *Porphyra*; these have only recently become available (Varela-Álvarez et al., 2017, 2018a), allowing high-resolution genotyping of large numbers of samples, for more progress in this direction.

The aim of the present study is to understand biogeographical patterns and infer hypothetical drivers of population genetic structure in two widely distributed *Porphyra* species from the Northeast Atlantic (from southern Portugal to Iceland) with contrasting mating systems and seasonality. *Porphyra dioica* J. Brodie and L. M. Irvine is dioecious, present all year on the coast and endemic to the Northeast Atlantic (type locality: Sidmouth, England; Brodie and Irvine, 2003; Brodie et al., 2008; Mols-Mortensen et al., 2012). *Porphyra linearis* Greville is a protandrous hermaphrodite species found only in winter, common on both sides of the North Atlantic (type locality is also in the Sidmouth area, England; Brodie and Irvine, 2003; Varela-Álvarez et al., 2004, 2005, 2007; Mols-Mortensen et al., 2012). We hypothesize that their population genetic structure may show evidence of hybridization and introgression as well as cryptic diversity, and that chimerism and polyploidy also shape the genetic composition of population of these species in the Northeast Atlantic.

MATERIALS AND METHODS

Sampling and Species Identification

Samples of *P. linearis* and *P. dioica* were obtained from 24 populations along the Northeast Atlantic coast including samples from populations from Portugal, Spain, France, Ireland and Norway (Table 1). Samples were collected fresh and brought to the laboratory to be examined for morphological and reproductive characters. Some samples were sent dried in silica gel by collaborators; such samples were re-hydrated to verify the morphology and reproduction. Species identification of the samples as *P. linearis* or *P. dioica* was done according to morphology (color, shape, holdfast, dimensions), reproduction, habitat, and seasonality (see Figure 1 and Table 2).

DNA Extraction, Polymerase Chain Reactions Amplification and Genotyping

Genomic DNA was isolated from 238 *P. linearis* individuals and 152 *P. dioica* individuals using the LiCl extraction protocol described by Hong et al. (1992) as modified by van Oppen et al. (1995). Polymerase chain reaction (PCR) for 10 selected microsatellite markers (Varela-Álvarez et al., 2017, 2018a; Supplementary Table 1) were performed separately for each locus in a 20 μ l reaction volume containing 5–50 ng genomic DNA. Amplifications were conducted following the PCR programs and conditions as described in Varela-Álvarez et al. (2017, 2018a) using a GeneAmp 2720 thermal cycler (Applied Biosystems). Amplified fragments were separated electrophoretically using an ABI PRISM 3130xl (Applied Biosystems) automated capillary sequencer at CCMAR, Portugal, and sized with GeneScan-350ROX size standard (Applied Biosystems). In addition, genotype data from samples from two locations previously used in Varela-Álvarez et al. (2018b) was added to the data set: 22 genotypes from *P. linearis* from Belém and 30 genotypes from *P. dioica* from Buarcos, both locations in Portugal. Alleles were scored in GENEMAPPER v.4.1 (Applied Biosystems). Binning and allele rounding were checked with

GENEMAPPER v.4.1 and TANDEM (Matschiner and Salzburger, 2009) for the full data set containing 442 multilocus genotypes (Supplementary Appendix 1).

Data Sub-Sample to Address Chimerism and Polyploidy

In *Porphyra*, the gametophytic thallus is a chimera that develops directly from the four meiotic products and therefore contains different genotypes that are arranged either in discrete sections or distributed haphazardly across the blade (Figure 2). Moreover, *Porphyra* blades can also contain several rounds of genome duplications within the same thallus representing either different ploidy levels in the same individual (mixoploids, Varela-Álvarez et al., 2018b, 2021) or different cytotypes within the same population (e.g., diploid (2 \times), tetraploid (4 \times) individuals, etc., see Niwa and Sakamoto, 2010; Niwa et al., 2010, 2018; Varela-Álvarez et al., 2018b). Therefore, finding multiple alleles in a thallus genotype could be either the result of chimerism (different genotypes derived from the tetrad) and/or different ploidy levels. Therefore, neither the true dosage of the alleles nor the true ploidy level in the sampled tissue can be known, which complicates and possibly biases the analysis of the genetic data (Meirmans et al., 2018). To address these issues and to explore the extent of a possible bias, we performed the analyses with multiple assumed ploidy levels for the whole dataset. We created three different versions of the genetic datafile, with the data coded as 2 \times , 4 \times , and 8 \times , subsampling alleles within individuals when necessary (up to 6 alleles per locus were observed; see Supplementary Appendix 1). We started the analyses assuming a ploidy level of 2 \times , because it is the most basic scenario; when genotyping a chimeric haploid thallus (a blade where all the cells have one set of chromosomes), up to 2 alleles per locus can be found because the sporophyte producing the tetrad would then be diploid (Figure 2). Correspondingly, for the 4 \times coding – representing the case of a chimeric diploid thallus– up to 4 alleles can be found per locus. Finally, the 8 \times coding represents a chimeric tetraploid thallus.

Nuclear Genetic Diversity and Genetic Differentiation

Two summary statistics of nuclear genetic diversity were calculated for every population in each species using GENODIVE 3.04 (Meirmans, 2020): EN , the effective number of alleles (the number of equally frequent alleles it would take to achieve a given level of gene diversity) and H_S , the expected heterozygosity using the Hardy-Weinberg equilibrium (also known as Gene Diversity) (Table 1). Each index was calculated considering the data as diploid (2 \times), tetraploid (4 \times), and octoploid (8 \times), while applying the maximum likelihood-correction for unknown allele dosage (De Silva et al., 2005) implemented in GENODIVE, for the scenarios where data were considered as polyploid (4 \times or 8 \times). When individuals had more unique alleles than possible under these ploidy-scenarios, a random subsample of the alleles was drawn. Since we did not know the exact ploidy of the samples and we did not have any information of the dosage of the alleles, we were not able to calculate the inbreeding coefficient F_{IS} .

TABLE 1 | Geographic origin and nuclear genetic diversity of populations of *P. linearis*, *P. dioica* and the winter form of *P. dioica* used in this study.

Species	Country	Population	Code	Lat	Lon	N	EN As 2x	Hs As 2x	EN As 4x	Hs As 4x	EN As 8x	Hs As 8x
<i>Porphyra linearis</i>	Norway	Langesund	LAN	58.993	9.8295	24	1.66	0.29	1.61	0.29	1.61	0.29
	Ireland	Salthill	SAL	53.257535	-9.078936	9	2.08	0.37	1.98	0.39	1.99	0.38
	France	Roscoff	ROS	48.72692778	-3.98926667	18	2.11	0.33	1.81	0.32	1.81	0.32
	Spain	P Vasco	VAS	43.385825	-3.00245278	18	1.60	0.22	1.53	0.24	1.53	0.24
		Artabra	ART*	43.352906	-8.476037	18	2.38	0.37	2.29	0.35	2.28	0.35
		Baiona	BAI	42.124439	-8.847513	24	2.23	0.41	2.01	0.38	2.01	0.38
	Portugal	Moledo	MOL	41.83667222	-8.87438333	22	2.24	0.34	2.18	0.43	2.19	0.43
		Bartolomeu	BAR	41.57434167	-8.80002778	22	2.84	0.48	2.76	0.45	2.83	0.45
		Peniche	PEN	39.36131111	-9.34876944	24	2.03	0.34	1.89	0.31	1.89	0.31
		Raso	RAS*	38.710123	-9.486064	16	2.22	0.44	2.08	0.42	2.08	0.42
Belém		BEL**	38.69138889	-9.21597778	29	2.12	0.41	1.88	0.35	1.87	0.35	
<i>Porphyra dioica</i>	Ireland	Spiddal	SPI	53.24408	-9.298322	18	1.76	0.32	1.73	0.34	1.73	0.34
		Salthill P2	SAL2	53.257599	-9.078944	9	1.57	0.23	1.58	0.28	1.58	0.28
	France	Malo	MAL	48.65125	-2.026861	4	1.43	0.06	1.38	0.19	1.38	0.19
	Spain	Herminia	HER	43.3874	-8.39285	11	2.24	0.48	2.11	0.45	2.09	0.45
		Artabra P2	ART2	43.352779	-8.478103	15	1.99	0.36	1.87	0.33	1.87	0.33
		Esteiro	EST	42.789556	-8.970887	13	2.23	0.48	2.05	0.44	2.05	0.44
		Sansenzo	SAN	42.397501	-8.792579	12	1.90	0.36	1.83	0.36	1.86	0.37
		Sansenzo P2	SAN2	42.394723	-8.769136	17	2.29	0.46	2.08	0.41	2.06	0.41
	Portugal	Gelfa	GEL	41.797328	-8.873442	19	2.16	0.37	2.02	0.36	2.00	0.36
		Buarcos	BUA**	40.17196	-8.893759	38	2.20	0.43	2.08	0.40	2.08	0.40
Oeiras		OEI	38.68555	-9.309167	26	1.76	0.33	1.72	0.31	1.72	0.31	
Winter <i>P. dioica</i>	Spain	Patos	PAT	42.154873	-8.825847	10	2.28	0.32	1.96	0.35	1.96	0.35
	Portugal	Amado	AMA	37.16191389	-8.90590556	22	2.03	0.40	1.97	0.40	1.97	0.40

Lat/Lon in decimal degrees, N: Number of individuals genotyped. EN: Effective number of alleles. Hs: Heterozygosity within populations, all calculated considering the data as diploid 2x, tetraploid 4x or octoploid 8x. When considering the data as 4x or 8x, the maximum likelihood-correction for polyploidy dosage is applied. *Calculations after excluding individuals from winter *P. dioica* mixed in the population (2 individuals in Cabo Raso and 1 individual in Artabra). **Data from 2 populations from Varela-Álvarez et al. (2018b).

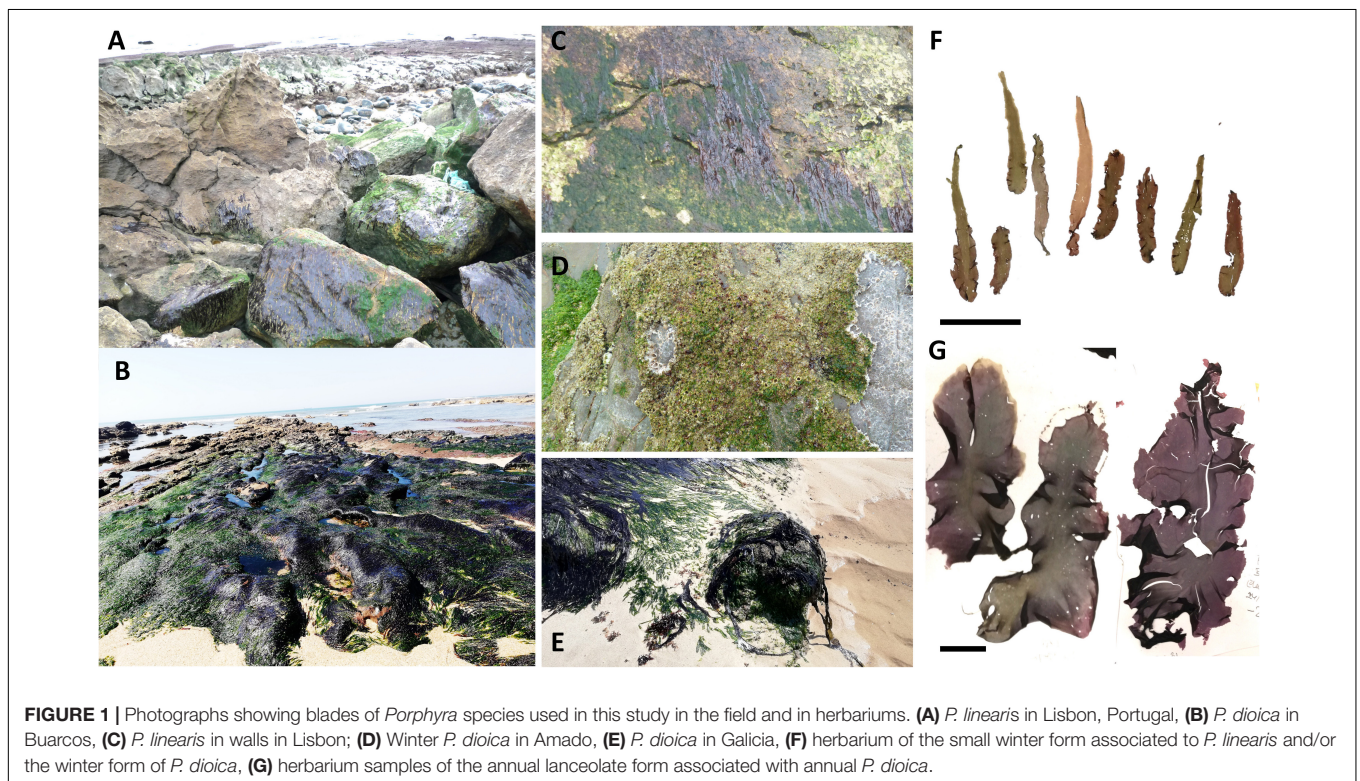


TABLE 2 | Morphological, ecological, reproductive and genetic characters of the species used in this study.

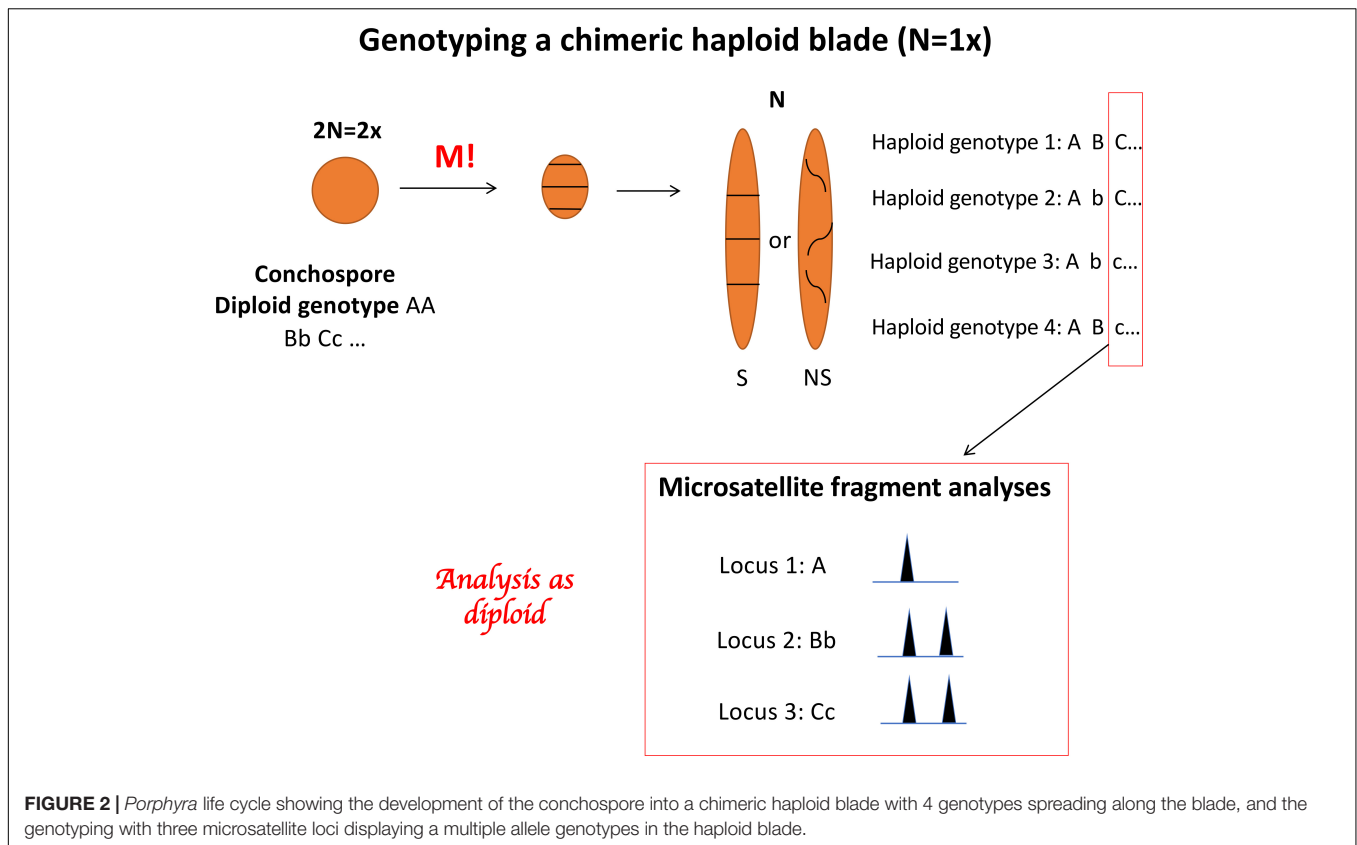
		<i>Porphyra linearis</i>			<i>Porphyra dioica</i>		
		First description Greville, 1830	Varela Álvarez, 2002	This study	First description Brodie and Irvine, 1997	This study	Winter form This study
FORM	Dimensions	3–5 inch (7–12 cm) length 1/2 inch (1.5 cm) width	2–15 cm length 0.5–3 cm width	2–15 cm length 0.5–3 cm width	Up to 70 cm length Up to 29 cm width	10–50 cm length 5–15 cm width	2–20 cm length 0.5–3 cm width
	Color	Reddish – purple	Dark red to reddish Light brown	Dark red to reddish Light brown	Dark Purple to dark green	Dark Purple to dark green	Dark red to reddish – brown
	Shape	Linear or linear – lanceolate. Margin slightly Waved	Linear to pear shaped on the base, slender plants	Linear to pear shaped on the base, slender plants	Lanceolate	Lanceolate	Linear to pear-shaped on the base
	Holdfast	Very minute disk	Holdfast clearly separated from the thallus at the base	Holdfast clearly separated from the thallus at the base	Holdfast clearly separated from the thallus at the base	Holdfast clearly separated from the thallus at the base	Holdfast clearly separated from the thallus
NICHE	Habitat	On rocks and stones, high water mark	On rocks, high littoral, very wave exposed area	On rocks, high littoral, very wave exposed area, in patches	Lower shore, usually in boulders in sand	Lower shore, usually in boulders in sand	On rocks, high littoral, very wave exposed area, in patches alone, or in patches mixed with <i>P. linearis</i>
	Seasonality	Annual. April and May	October to May	October to May	All year	All year	December to March
REPRODUCTION	Reproduction	Oval granules, not arranged in a quaternate manner	Mainly monoecious, sometimes dioecious, probably sequentially protandrous	Mainly monoecious, but sometimes dioecious, probably sequential protandrous	Dioecious, reproductive sori marginal, occasionally monoecious	Dioecious, reproductive sori marginal, occasionally monoecious	–
	Reproduction bodies	Partly scattered, partly in lines	Marginal. Male sorus pale yellow edge. Female sorus: red edge on the base	Marginal. Male sorus pale yellow edge. Female sorus: red edge on the base	Marginal yellow and reddish female sori	Marginal. Strong yellow and reddish female sori	–
DNA	RbcL Haplotypes	–	–	A, B, C, E Introgressed D, F	–	F, G, H, I, J, K	F
	Genotypes	–	–	<i>P. linearis</i> , hybrids × <i>P. dioica</i>	–	<i>P. dioica</i>	<i>P. dioica</i>

Data from different sources and in reference to the original descriptions.

Genetic population structuring and admixture was evaluated with the software STRUCTURE v. 2.3.2.1 (Pritchard et al., 2000). STRUCTURE was run with the admixture model with the assumed number of clusters (K) ranging from 1 to 25. For each value of K , ten replicate runs were carried out consisting of 100,000 Markov Chain Monte Carlo (MCMC) iterations after a burn-in period of 10,000, without any prior information on the species or population of the sampled individuals. The optimal number of clusters was determined using the ΔK statistic (Evanno et al., 2005). For this optimal value of K , we chose the replicate with the highest overall likelihood for graphical presentation; the bar chart was created in Microsoft Excel. Extraction of the membership coefficients and calculation of the ΔK statistics were done using a custom script designed to run STRUCTURE using R (Supplementary Appendix 2). Separate analyses were done considering the data as diploid $2\times$, tetraploid $4\times$, and octoploid $8\times$. Pairwise differentiation among all pairs of populations was calculated by Nei's G_{ST} and JostD coefficients.

In addition to the STRUCTURE analysis, we also studied the main patterns in the genotypic differentiation by a Principal Components Analysis (PCA) based on the allelic variation across all genotyped individuals using GENODIVE 3.04 (Meirmans, 2020). The PCA was performed three times, considering the data as diploid $2\times$, tetraploid $4\times$, and octoploid $8\times$, as described above.

The strength of the genetic differentiation within and among the clusters recognized by STRUCTURE was estimated using a series of Analyses of Molecular Variance (AMOVA, Excoffier et al., 1992). The first AMOVA quantified the strength of the differentiation among the two species, *P. dioica* and *P. linearis*; where we used the STRUCTURE assignment to the two species ($K = 2$) rather than the morphological species identification, with populations grouped within species. We then proceeded to quantify the differentiation within each species separately, based on the main within-species clusters. For these latter analyses, we removed three individuals that were identified genetically



as *P. dioica* in populations where all other individuals were identified genetically as *P. linearis*. No significance test was performed for these AMOVAs as that would lead to circularity in reasoning (Meirmans, 2015). Despite the lack of testing, the AMOVAs are very informative as STRUCTURE does inform about the presence of population structure, but not about the strength of the clustering. All AMOVAs were performed three times: for the assumed ploidy levels of 2x, 4x, and 8x.

Sequencing and Phylogenetic Analyses

A selection of 2 to 6 individuals was made from each sampling location for amplification and sequencing of the cpDNA *rbcL*-region, following the methods by Broom et al. (2010) with primers KitoF1 (5'-ATG TCTCAATCCGTAGAATCA-3'), and JrSR (5'-AAGCCCCTTGTGTTAGTCTCAC-3'). The following amplification profile was used for the PCR-amplification of the region: 1 cycle of 94°C for 5 min; 35 cycles of 94°C for 30 s, 50°C for 30 s min, 72°C for 1.30 min; 1 cycle of 72°C for 10 min. Sequences were also retrieved from GenBank from additional locations from Britain and Iceland for *P. dioica* and from Britain, Iceland, and the United States for *P. linearis*. As outgroup, sequences from *Pyropia yezoensis* were downloaded from GenBank (accession numbers: MG604384 and AB455543). The resulting sequences were edited to eliminate ambiguities and aligned with GENEIOUS 6.1.6 (Biomatters Ltd., Auckland, New Zealand) and MEGA X (Kumar et al., 2018; Stecher et al., 2020). The final data set contained 73 sequences, with a region of

1141 bp shared among all sequences including the outgroups. The frequency of the different *rbcL* haplotypes for each location were plotted to visualize their geographical pattern. The phylogenetic relationships among the haplotypes were examined using a haplotype network and phylograms. The haplotype networks were drawn in POPART¹ using the TCS (Clement et al., 2002) network approach (95% parsimony connection limit). The phylograms were constructed using Maximum likelihood (ML) methods with MEGA X software. Robustness of the trees was tested using 10,000 bootstrap replicates. In addition, the number and delimitation of *rbcL* phylogroups was visually compared for congruence with the multilocus genotypic clusters found in the STRUCTURE analysis and also in the Principal Components Analysis.

RESULTS

Species Distinction, Cryptic Morphotype and Admixture

STRUCTURE analysis of all 442 genotypes showed an optimum at $K = 2$ according to the ΔK criterion (Figure 3), at which the cluster assignments generally aligned with the *a priori* species delimitations into *P. linearis* and *P. dioica*. Surprisingly, however, the STRUCTURE results also indicated the cryptic presence

¹<http://popart.otago.ac.nz>

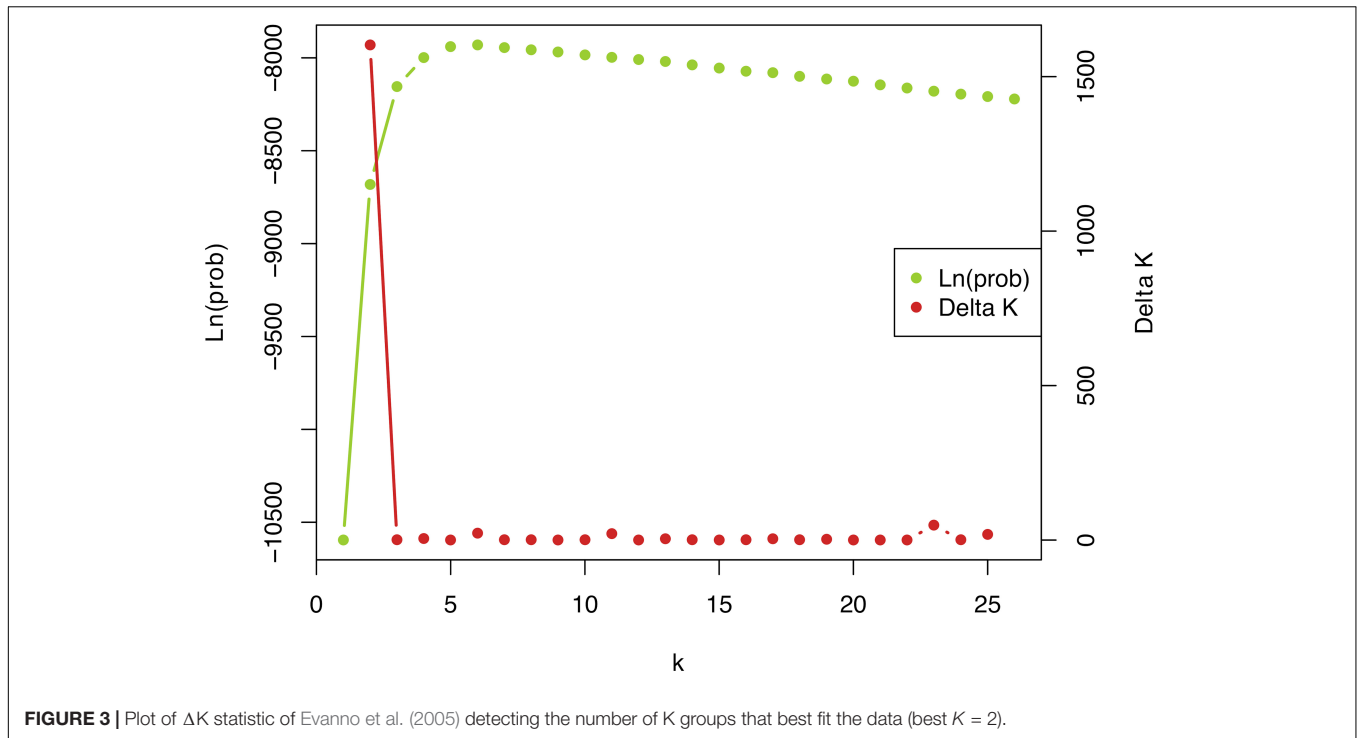


FIGURE 3 | Plot of ΔK statistic of Evanno et al. (2005) detecting the number of K groups that best fit the data (best $K = 2$).

TABLE 3 | Summary of genetic diversity of populations of *P. linearis*, *P. dioica* and the winter form of *P. dioica* by geographical areas.

	<i>N</i>	<i>EN</i>	<i>H_S</i>	Detected nuclear hybrid	Detected <i>rbcl</i> Haplotype	Detected <i>rbcl</i> introgression
PL North	69	1.77 (0.30)	0.30 (0.09)	Yes	A	No
PL South	156	2.14 (0.39)	0.40 (0.09)	Yes	A,B,C,D E,F	<i>P. dioica</i>
PD North	31	1.52 (0.19)	0.21 (0.09)	No	F,G,H	No
PD South	151	1.96 (0.27)	0.41 (0.07)	No	F,G,I,J,K	No
PD South + WPD	186	1.79 (0.20)	0.35 (0.08)	No	F,G,I,J,K	No
Winter PD	35	1.6 (0.18)	0.16 (0.13)	Yes	F	No
PL	225	1.88 (0.32)	0.36 (0.07)	Yes	A,B,C,D E,F	<i>P. dioica</i>
PD	182	1.79 (0.22)	0.36 (0.07)	No	F,G,H,I,J,K	No
PD + Winter PD	217	1.72 (0.19)	0.32 (0.08)	Yes	F,G,H, I, J, K	No
All	442	1.78 (0.21)	0.36 (0.07)	Yes	A,B,C,D E,F,G,H,I, J, K	Yes

N: Number of individuals genotyped. *EN*: Effective number of alleles (the number of equally frequent alleles it would take to achieve a given level of gene diversity); *H_S*: Heterozygosity within populations or Gene diversity (the expected frequency of heterozygotes within subpopulations, assuming Hardy-Weinberg equilibrium). In brackets the standard deviation is shown. All calculated considering the data as diploid (2 \times). In addition, in the rightmost columns, the *rbcl* haplotypes detected in each area and species, and the inferred haplotype introgression are given.

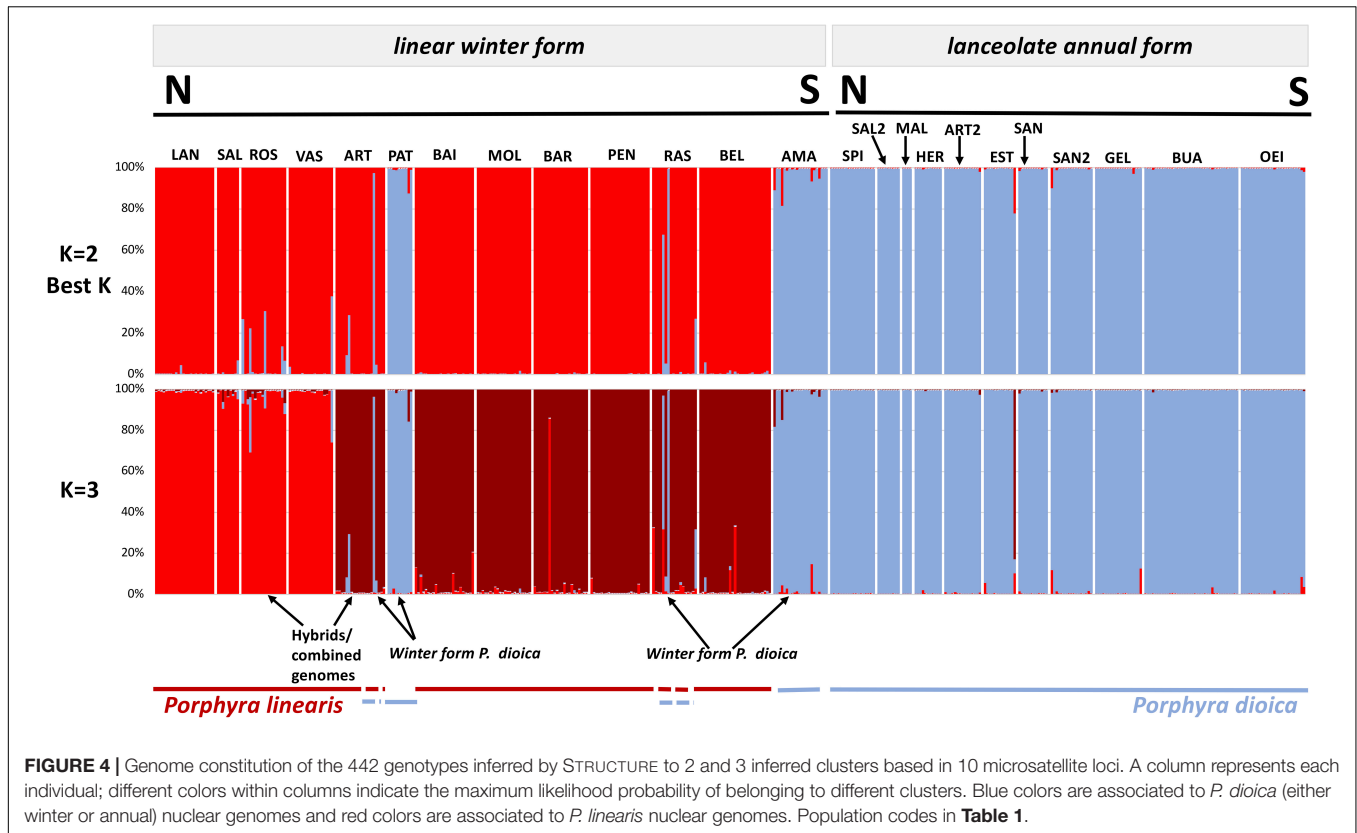
of *P. dioica* genotypes within samples originally attributed to *P. linearis*. These individuals had the morphology (shape, color, size) and winter seasonality of *P. linearis* but *P. dioica* genotypes (both the nuclear genomes or chloroplasts genomes, see below). This new cryptic morphotype was found either as a few individuals intermixed within *P. linearis* populations (Artabra and Cabo Raso) or as full populations (Patos and Amado) (Tables 1, 3 and Figures 4–6) but these appear to be restricted to southern Europe. The PCA (Figure 6), showed similar results as STRUCTURE, with *P. linearis* genotypes grouped together and clearly distinguished from the *P. dioica* genotypes, and showed also the same cryptic samples clustering to *P. dioica*. We refer to this new cryptic form the “winter form” of *P. dioica* from here on. For the further analyses reported below, we either

included them as a separate third taxon or included them with the southern populations of *P. dioica* (indicated in the Tables).

In addition to the cryptic winter form, both STRUCTURE and the PCA showed the presence of several admixed genotypes that are presumably hybrids between the two species. All above results were the same when considering species as diploid (Figures 3–6), tetraploid, or octoploid (Supplementary Figures 1–4).

Population Structure Between North and South of Europe From Nuclear Markers

Inferring sub-group genetic structure using STRUCTURE, higher levels of K showed a division into within-species groups. For $K = 3$, *P. linearis* was split into two clusters (Figure 4 top;



two shades of red), corresponding to North Central (Norway, Europe, Ireland, Britain, France and North Central Spain) vs. South Europe (including Northwest Spain and Portugal). $K = 4$ leads to an additional splitting of *P. dioica* genotypes, where the two populations from Ireland were separated from the southern populations (**Figure 5**; two shades of blue). However, for *P. dioica* there was admixture between the two clusters across most populations. The individuals with the cryptic winter form of *P. dioica* were assigned to the South Europe cluster, also with some admixture. Similar divisions into clusters and similar patterns of admixture were obtained when STRUCTURE was run for each species separately (results not shown).

For both species, populations from the South Europe STRUCTURE cluster (Spain and Portugal) showed a higher number of alleles, and higher gene diversity (**Tables 1, 3**) and were more differentiated in comparison with populations from the northern cluster (**Table 3** and **Supplementary Table 2**). For *P. linearis*, intrapopulation genetic diversity (either measured as expected heterozygosity or as effective number of alleles) was highest in the North of Portugal. For *P. dioica* there was less spread in the genetic diversity and the most diverse population differed, depending on the summary statistic and the assumed ploidy level.

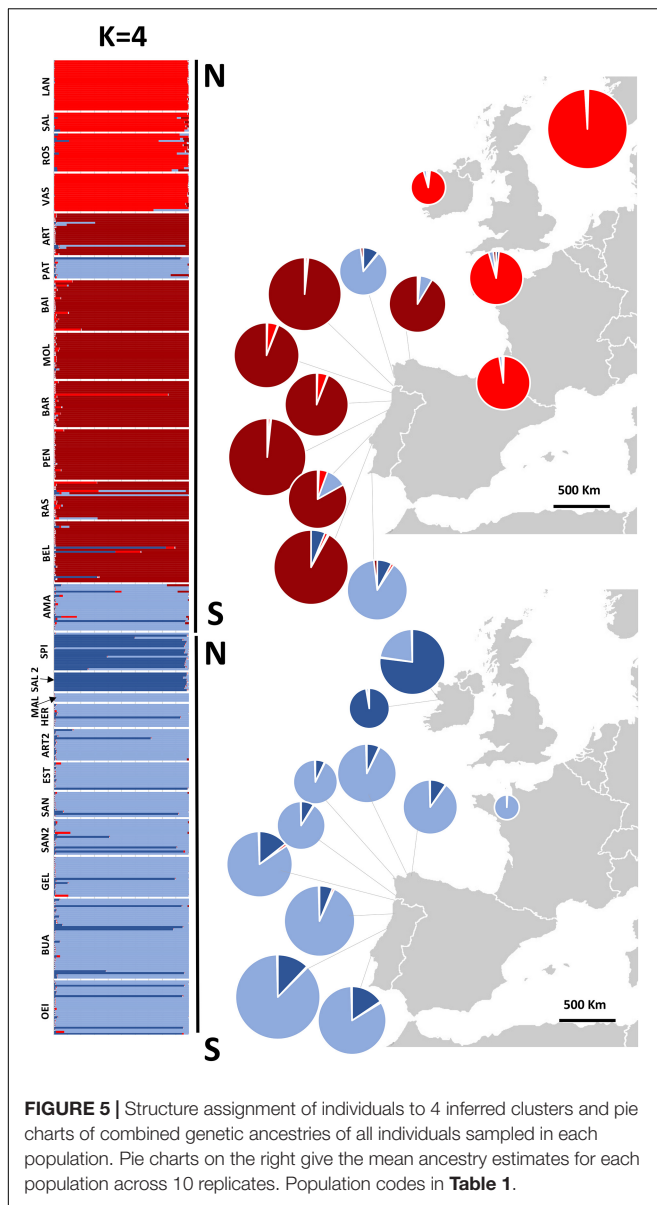
Despite the presence of some admixed individuals, there was a strong genetic differentiation between the two species, as shown by the AMOVAs. The F_{CT} statistic that quantifies the differentiation among the two species had values of 0.26, 0.29, and 0.31, for the assumed ploidy levels of $2\times$, $4\times$, and $8\times$, respectively

(see **Table 4**). The relatively small difference between these values indicates that the assumed ploidy level has limited impact on the estimation of the genetic divergence.

In both species, STRUCTURE revealed a division of the populations into northern and southern clusters, but the degree of divergence (F_{CT}) between the clusters was stronger for *P. linearis* than for *P. dioica*, irrespective of the assumed ploidy level (see **Table 4**). Interestingly, the differentiation among population within clusters (F_{SC}) was also stronger in *P. linearis*. When *P. dioica* was split into two clusters representing the two morphotypes (the Winter form and the annual form), no differentiation was found according to F_{CT} with values of -0.01 , 0.00 , and 0.01 for the assumed ploidy levels of $2\times$, $4\times$, and $8\times$.

cpDNA Phylogeographic Analyses

CpDNA analyses based on 71 sequences (62 produced in this study, **Table 5**), with 1141 aligned positions and 11 distinct haplotypes, also supported the separation of the samples into two distinct clades coincident with *P. linearis* and *P. dioica*. Within each species, the haplotypes were generally closely related, with only a few mutations steps between haplotypes, with the exception of one divergent haplotype (Haplotype D) found within the *P. linearis* samples. This could be the case of a recombinant haplotype, or a lineage from an unknown cryptic species, at a introgressed or heteroplasmic individual but further research is needed to clarify this aspect. Haplotype F was widespread in *P. dioica* but was also found in two *P. linearis* individuals from one site (Cabo Raso) in the South Europe cluster, where



the microsatellites had shown admixture for those two exact individuals. The winter form of *P. dioica* only displayed this haplotype F, agreeing with the results from the microsatellites (**Figures 6, 7**).

The cpDNA phylogroups observed for *P. linearis* (North Central Europe vs. South Europe) and the winter form of *P. dioica* matched remarkably well with the clusters observed for the microsatellites, as illustrated in the PCA plot (**Figure 6B**). In *P. linearis*, two main biogeographical areas were found: a larger area representing North-Central Europe in addition to one site from northern Spain, where only a single haplotype (A) was found, and a southern area with 6 haplotypes and evidence of introgression. For *P. dioica* (annual form) we also found six haplotypes, all very closely related (only one or two mutation steps difference among them), but there was no clear geographical

structure in their distribution. However, also here, the South Europe cluster, with 5 haplotypes, showed more diversity than the North Central cluster, with only 3 haplotypes.

DISCUSSION

Species Delineations, Cryptic Diversity and the Winter Forms of *P. dioica*

The two species were well delimited by both the nuclear and chloroplast markers; in all analyses the observed groups/clusters were associated with the two species. Surprisingly, our analyses did reveal that one of the species, *P. dioica*, presented two morpho/ecotypes, an annual form and winter form indistinguishable from *P. linearis*. This winter form was found to co-exist with individuals of *P. linearis* but also to be the only form present at one site. No genetic differentiation was found between the winter form and the annual form of *P. dioica*, judging from the F_{CT} values between these two groups that were very close to zero. This suggests that the striking morphological differences between the forms could be the result of phenotypic plasticity, which is a genotype's ability to produce variable phenotypes in response to environmental conditions (e.g., West-Eberhard, 2003). Phenotypic plasticity has previously been reported for other *Porphyra* species (e.g., Varela-Álvarez et al., 2007). Moreover, it is recognized, if not well known, that a single *Porphyra* species can present several morphological forms (e.g., linear, lanceolate, and/or rosette morphologies, see Reddy et al., 2018, for example). In addition, several species can share the same morphology; this is a well-known cryptic diversity issue in *Porphyra sensu lato* (e.g., Varela Álvarez, 2002). This “winter form” of *P. dioica* could be a plastic response of *P. dioica* to environmental conditions in the south. In contrast, the morphological differences between the two forms of *P. dioica* could be under genetic control, which would make these morphotypes differentiated ecotypes. How the species can adapt/modify its form and seasonality, is something that we cannot answer from the results of this study, but it is clear that two distinct forms are associated with the genome of *P. dioica*. In addition, admixed and hybrid individuals between the two species were found.

The phenomenon of algal species showing similar morphologies has previously been ascribed (e.g., Littler et al., 1983) to convergent adaptations to critical environmental factors. Littler and Littler (1980) postulate that the functional characteristics of seaweeds, such as photosynthesis, nutrient uptake, and grazer susceptibility, are related to form characteristics. For example, growth and morphogenesis in the green algae of the order Ulvales depends on the combination of regulative morphogenetic compounds released by specific associated bacteria (Weiss et al., 2017). All these factors can hypothetically influence morphogenesis of any blade of Bangiaceae and could be additional reasons why simple seaweed species have similar morphologies. Shifts in the environment drive both plastic and evolutionary responses in organisms (reviewed in Schaum and Collins, 2014). We have related in this study morphology and seasonality with specific genotypes,

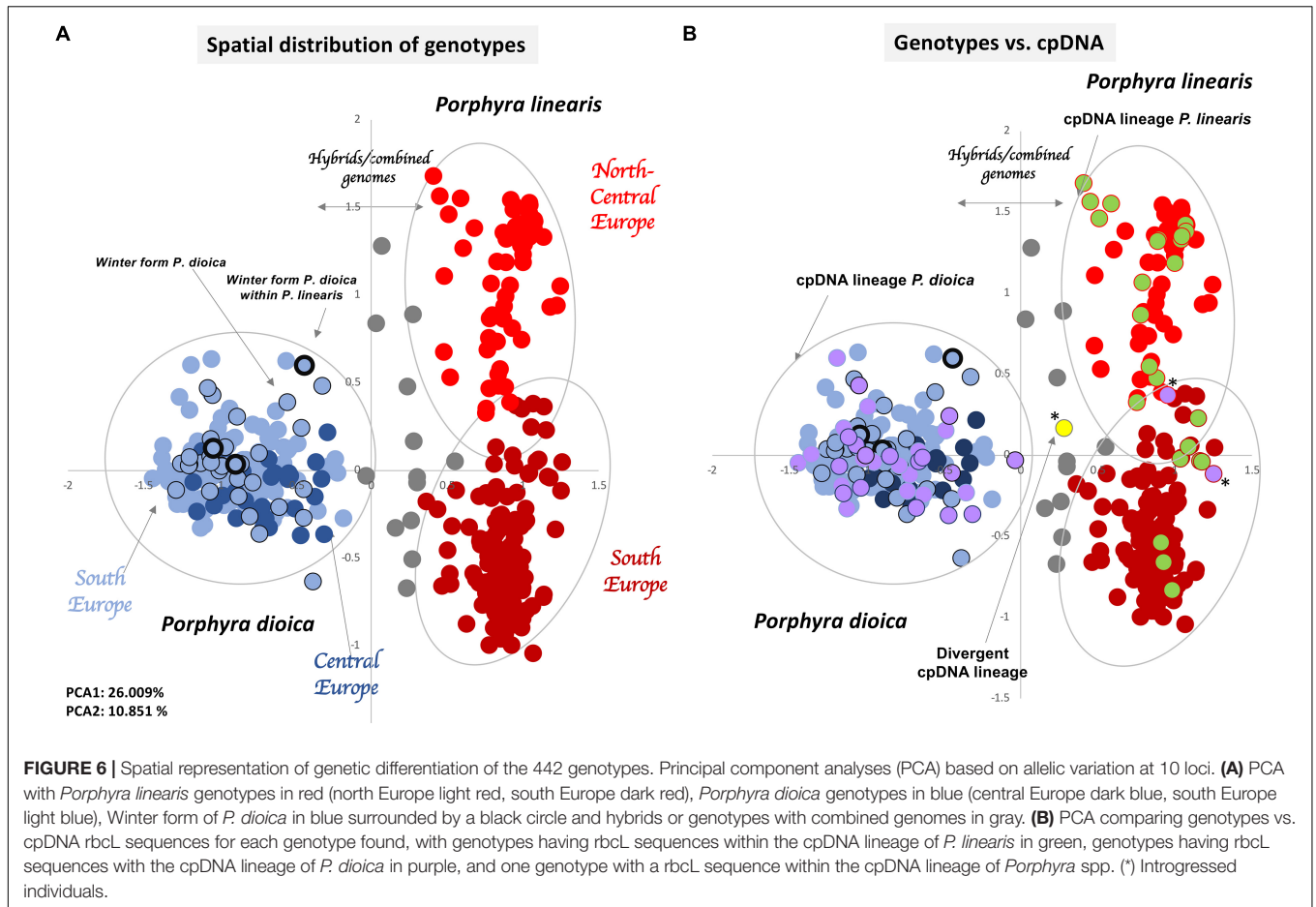
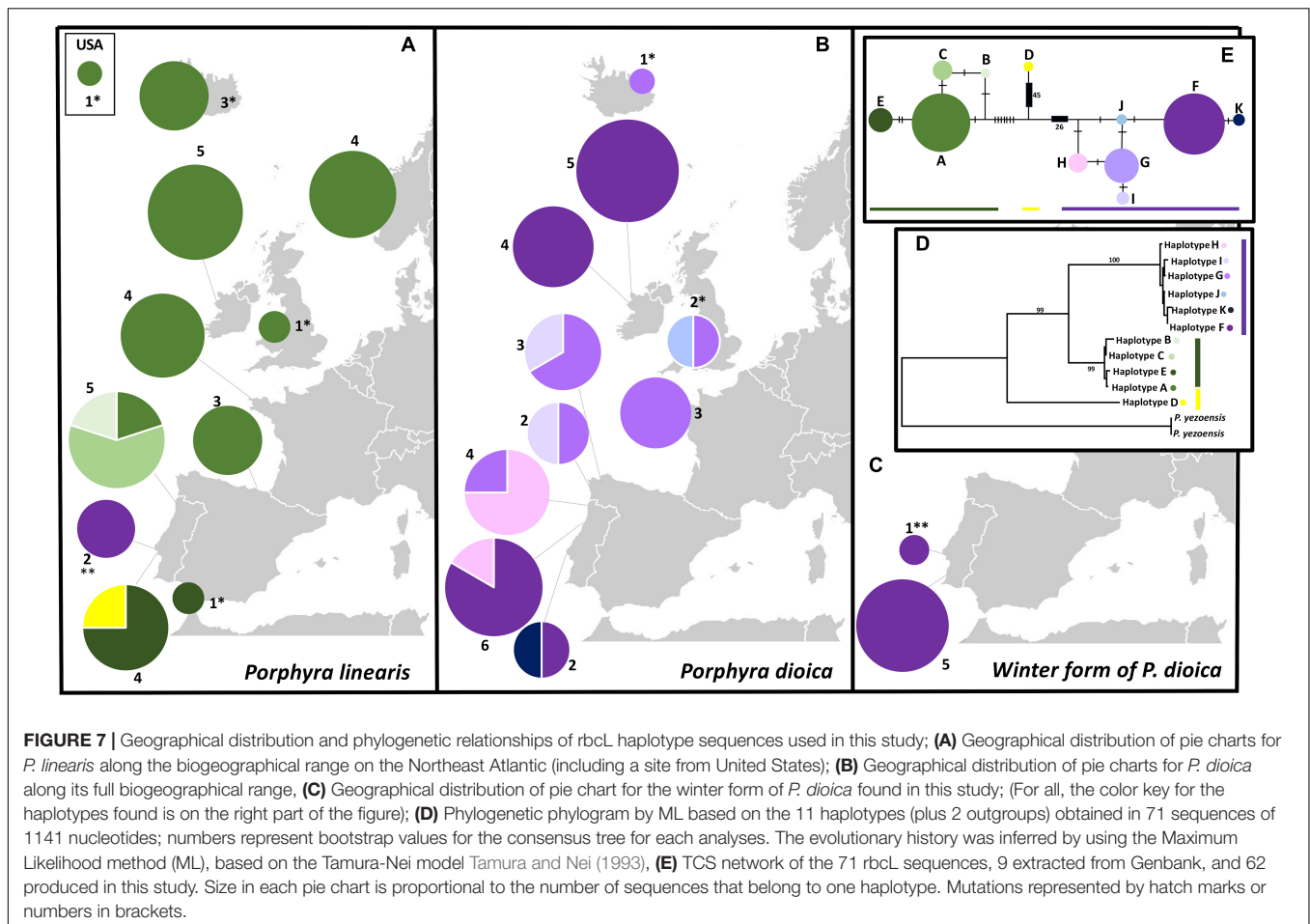


TABLE 4 | Strength of the genetic population structure as estimated using an AMOVA.

Source of Variation	F-stat.	As 2x		As 4x		As 8x	
		F-value	%var	F-value	%var	F-value	%var
Among Species							
Within Individuals	F_{IT}	0.38 (0.16)	61.7	0.58 (0.11)	41.7	0.68 (0.1)	32.2
Among Individuals within Pops.	F_{IS}	0.01 (0.12)	0.5	0.29 (0.09)	17.0	0.41 (0.09)	22.3
Among Pops. within Species	F_{SC}	0.16 (0.02)	11.8	0.18 (0.03)	12.7	0.21 (0.03)	14.5
<i>P. linearis</i> North vs. South	F_{CT}	0.26 (0.11)	26.0	0.29 (0.12)	28.6	0.31 (0.13)	31.0
Within Individuals	F_{IT}	0.32 (0.12)	67.5	0.55 (0.08)	45.2	0.65 (0.07)	35.4
Among Individuals within Pops.	F_{IS}	0.01 (0.12)	0.8	0.31 (0.08)	20.4	0.43 (0.08)	27.1
Among Pops. within Clusters	F_{SC}	0.1 (0.01)	8.0	0.12 (0.01)	8.6	0.13 (0.01)	9.4
Among Clusters	F_{CT}	0.24 (0.06)	23.6	0.26 (0.06)	25.8	0.28 (0.07)	28.1
<i>P. dioica</i> North vs. South	F_{IT}	0.2 (0.21)	80.5	0.43 (0.16)	57.5	0.55 (0.15)	45.4
Within Individuals	F_{IS}	0.01 (0.16)	0.5	0.27 (0.13)	21.0	0.38 (0.13)	28.0
Among Pops. within Clusters	F_{SC}	0.05 (0.02)	4.5	0.07 (0.03)	5.7	0.09 (0.04)	7.6
Among Clusters	F_{CT}	0.15 (0.12)	14.6	0.16 (0.13)	15.8	0.19 (0.14)	19.0
<i>P. dioica</i> Morphotypes	F_{IT}	0.09 (0.17)	91.1	0.35 (0.13)	65.4	0.47 (0.13)	52.7
Within Individuals	F_{IS}	0.01 (0.16)	0.6	0.27 (0.13)	23.9	0.38 (0.13)	32.6
Among Pops. within Morphs	F_{SC}	0.09 (0.03)	9.3	0.11 (0.04)	11.0	0.14 (0.04)	14.0
Among Morphotypes	F_{CT}	-0.01 (0.01)	-1.0	0.00 (0.02)	-0.3	0.01 (0.03)	0.6

Values of the F-statistics corresponding to the different hierarchical levels of the population structure, and the associated percentages of the total genetic variance (%var). The population structure was based on the results of the STRUCTURE analyses (Figures 4, 5), both for delimiting the two species, and for assigning populations to the North and South clusters within species. To avoid circularity, no P-values were calculated (Meirmans, 2015). Following the Structure results, the cryptic Winter form of *P. dioica* was included in the southern cluster of that species, except for the final AMOVA. There, only *P. dioica* was included where one cluster was composed of the Winter form and a second cluster was composed of all other populations, in order to test for possible differentiation between the two morphotypes.



which can explain, at least partly, cryptic diversity in these species. Studies on the blade morphogenesis and environmental and genetic factors that influence the morphology of bladed Bangiaceae could also give important clues in resolving the conundrum of cryptic diversity.

Biogeographical Patterns and Population Genetic Structure Detected

Though both clustering analyses (PCA and STRUCTURE) showed that the main divergence was at $K = 2$ for the distinction between the two species, there was also evidence of subclustering within each species ($K = 3$ and $K = 4$). For both *Porphyra* species, the microsatellite and chloroplast markers showed the presence of two main biogeographical areas within the Northeast Atlantic: North-Central Europe (including Iceland, Norway, Ireland, Britain, France, and Northeast Spain) and South Europe (Northwest Spain and Portugal). The degree of divergence between the northern and southern clusters, as measured using F_{CT} , was stronger for *P. linearis* than for *P. dioica*, independent of the assumed ploidy level. For *P. linearis*, the southern regions hosted the maximum genetic variability and contained all cpDNA haplotypes including some unique to these areas and the Northern-central regions have fewer and non-unique haplotypes.

For *P. dioica*, all the diversity seemed to be more mixed across its distribution with no clear pattern, though it was also lower in the north compared with the south in general. Additionally, at the more extreme south, introgressed *P. linearis* individuals and mixed populations with the winter form of *P. dioica* start to appear.

Combined, these results point to a postglacial recolonization from southern to northern Europe after the LGM (Last Glacial Maximum), where *P. linearis* probably suffered more from colonization bottlenecks or from extirpation events in the past followed by subsequent recolonization, which may have resulted in the high genetic differentiation between the two areas. In the case of *P. dioica*, the separation of the two biogeographical areas lies more to the north as the population from Brittany still clusters with the southern populations but the peripheral Irish populations form their own cluster. These populations in *P. dioica* seem to be genetically differentiated from the others suggesting reduced gene flow with other populations in Europe. The difference in patterns between the two species may reflect the differences in their life history; *P. dioica* is dioecious and is present all year round, *P. linearis* is protandrous hermaphroditic and only present in the winter and the spring, and therefore has higher demographic turnover rates. Our study lacks extensive sampling toward the North for both species, so maybe when

TABLE 5 | Sample localities for rbcL haplotyping.

	Country	Locality	N	Haplotype	Accession Number	Source (Population code)	
<i>P. linearis</i>	United States	Maine	1	Hpl A	JN028945	Kucera and Saunders, 2012	
	Iceland	Hofnin, Gardi	3	Hpl A	JN787103; JN787104; JN787105	Mols-Mortensen et al., 2012	
	Norway	Langesund	4	Hpl A	OL477717, OL477718, OL477719, OL477720	This study (LAN)	
	Britain	Aberystwyth	1	Hpl A	HQ687547	Sutherland et al., 2011	
	Ireland	Salthill	5	Hpl A	OL477712, OL477713, OL477714, OL477715, OL477716	This study (SAL)	
	France	Roscoff	4	Hpl A	OL477708, OL477709, OL477710, OL477711	This study (ROS)	
	Spain	Sopelana, Basque	3	Hpl A	OL477705, OL477706, OL477707	This study (VAS)	
	Portugal	Bartolomeu	5	Hpl A; B; C	OL477700, OL477701, OL477702, OL477703, OL477704	This study (BAR)	
			2	Hpl F	OL477693, OL477694	This study (RAS)	
			4	Hpl D, E	OL477696, OL4776967, OL477698, OL477699	This study (BEL)	
	Spain	Tarifa, Cadiz	1	Hpl E	KJ182953	Sánchez et al., 2014	
	<i>P. dioica</i>	Iceland	Krossavik	1	Hpl G	JN787102	Mols-Mortensen et al., 2012
		Britain	Aberystwyth, Sidmouth	2	Hpl J, G	AF081291, HQ687546	Klein et al., 2003; Sutherland et al., 2011
5				Hpl F	OL477663, OL477664, OL477665, OL477666, OL477667	This study (SPI)	
Ireland		Spiddal	4	Hpl F	OL477659, OL477660, OL477661, OL477662	This study (SAL2)	
			3	Hpl G	OL477668, OL477669, OL477670	This study (MAL)	
France		Saint Malo	3	Hpl G	OL477671, OL477672, OL477673	This study (HER)	
Spain		Herminia	3	Hpl G; I	OL477674, OL477675	This study (EST)	
			2	Hpl G; I	OL477676, OL477677, OL477678, OL477679	This study (GEL)	
Portugal		Gelfa	4	Hpl H; G	OL477680, OL477681, OL477682, OL477683, OL477684, OL477685	This study (BUA)	
			6	Hpl F; H	OL477686, OL477687	This study (OEI)	
			2	Hpl F; K	OL477695	This study (RAS)	
<i>W. P. dioica</i>		Portugal	Raso ⁺⁺	1	Hpl F	OL477688, OL477689, OL477690, OL477691, OL477692	This study (AMA)
			Amado	5	Hpl F		

N: Number of individuals per sampling site, Hpl: Haplotype, Accession number in Genbank, Source (Reference used or individuals from a population from this study, for code in brackets refer to **Table 1**). ++Mixed individuals of *P. linearis* and winter *P. dioica* in the same population.

more samples from this area would be available, the split between the northern and southern clusters may become more apparent. The southern area of Europe, including west Iberia, could have acted as a climatic refugium for both species, reflecting patterns of past glaciation in Iberia (Neiva et al., 2014; Bermejo et al., 2018) harboring most of the gene pool of each species. High genetic differentiation has been shown for populations of other red algal species in different geographical areas within Europe [e.g., *Mastocarpus stellatus* (Stackhouse) Guiry; Zuccarello et al., 2005] including non-interbreeding populations within the same putative species (Guiry and West, 1983). However, in the case of *P. dioica*, more recent historical events might hypothetically have led to admixture and connectivity among population, in addition to a possible role of different mating systems and all year presence on the shore (vs. only winter/spring presence in *P. linearis*).

Evidence of Plastid Introgression and Admixed Populations at the South

The transfer of genetic material across species by hybridization and/or introgression has a considerable impact on the genetic make-up and evolution of species (e.g., Mallet, 2005; Arnold et al., 2008; Neiva et al., 2010). For other species of *Porphyra sensu lato*, the phenomena of hybridization and introgression

have previously been observed (e.g., Niwa and Sakamoto, 2010; Niwa et al., 2010, 2018; Mols-Mortensen et al., 2012); however, these processes have not been put in a geographical context. Here, we showed evidence of plastid introgression and admixture within populations of *P. linearis*, with individuals having the genome of *P. linearis* but the chloroplast of *P. dioica* or other divergent chloroplast probably from another *Porphyra* species. Additionally, we found the winter form of *P. dioica*, which can appear between *P. linearis* patches or as independent patches/populations but in the same niche (high on the shore) as *P. linearis*. We observed such diversity only within the southern cluster of *P. linearis*, but never in the northern cluster nor in any population of *P. dioica*.

At the edge of their distributional ranges, some species may show distinct evolutionary patterns and processes (e.g., Budd and Pandolfi, 2010; Malay and Paulay, 2010), and our data indicate that this is a likely hypothesis for our study species. It would be interesting to know to what extent the introgression for *P. linearis* reported in the literature [*P. umbilicalis* Kützting and *P. linearis* Greville (Mols-Mortensen et al., 2012)] and cryptic diversity (Klein et al., 2003; Lindstrom and Fredericq, 2003; Kucera and Saunders, 2012; Mols-Mortensen et al., 2012) are associated with specific geographical areas (like in this study for southern Europe) or particular evolutionary processes.

The Genetic Analyses of a Mixoploid Chimera

To devise a method to analyze genetic structure while incorporating alleles derived from two processes – blades with several genotypes in the same individual but also with different genome sizes and/or different cytotypes (ploidy levels) – has been challenging. Since these genotypes and ploidy levels can be either distributed across separate sections of the blade or distributed haphazardly (see Varela-Álvarez et al., 2021), it is not possible to know the exact ploidy level of a thallus portion used for genotyping *a priori* (or *a posteriori*). As the sample is used destructively for DNA extraction, the exact same slice cannot be used for measuring the ploidy level with flow cytometry. The most feasible way to analyze the data of a mixoploid plant was to resample the data sets several times. In that way we could look at the population differentiation simulating each ploidy level separately, and then compare their strength. Though the resulting values of the summary statistics will of necessity be imprecise, this method does allow us to judge whether the assumption of a specific ploidy level would have any impact on the results (Meirmans et al., 2018). Our analyses, considering the data as either diploid, tetraploid or octoploid derived from haploid, diploid or tetraploid chimeric thalli, revealed no large differences in either estimations of genetic diversity or clustering methods in any assumed ploidy level. This indicates that our main conclusions are not strongly influenced by the assumed ploidy level of the data.

In red algae, the number, size and position of nuclei in cells as well as their DNA content (ploidy) vary considerably across taxa. DNA measurements have revealed that nuclei within a single individual can become polygenomic (either polyploid or polytene) and can also represent different stages of the life cycle (e.g., arrest at the G2 phase of mitosis) (Goff and Coleman, 1990) or represent different genome types (Varela-Álvarez et al., 2021). Multiple copies of a locus (either from ploidy changes or endopolyploidy) can evolve by mutation and recombination and form new alleles even within the same cell. However, this is often overlooked in population genetic studies of red algal taxa. The impact that the presence of different ploidy levels within one individual (mixoploidy and/or endopolyploidy) has on the genetic diversity and evolutionary biology of these species is poorly understood. The genetic analyses of mixoploids (organisms with more than one ploidy level in the same individual) has barely been studied in the literature, making the present study rather novel. We hope the results of this study may provide a starting point for stimulating additional studies for other *Porphyra sensu lato* taxa or other intertidal red algae considering these facts.

CONCLUSION

Two biogeographical areas in the Northeast Atlantic have been found for chimeric blades of the genus *Porphyra* with higher genetic diversity and evidence of introgression and

cryptic plasticity in the southern populations. The southern cluster in *P. linearis* revealed introgressed individuals that had cpDNA-haplotypes of *P. dioica*, as well as a winter form of *P. dioica* that grows intermixed with and is morphologically indistinguishable from *P. linearis*. For the latter species, we hypothesized that a northward colonization from southern Europe after the LGM has led to more homogeneous and lower genetic diversity in populations toward the north. For *P. dioica*, the signature of such recolonization is less obvious, possibly due to a higher connectivity and gene flow among populations resulting from its reproductive mode and annual seasonality. We hope the results of this study may provide a starting point showing how to tackle methodological challenges for other Bangiaceae and other intertidal red algal species considering mixoploidy and chimerism.

DATA AVAILABILITY STATEMENT

The datasets presented in this study can be found in online repositories. The names of the repository/repositories and accession number(s) can be found in the article/**Supplementary Material**.

AUTHOR CONTRIBUTIONS

EV-Á conceived the initial idea following discussion with all authors. EV-Á, ES, and MG performed the field collections. EV-Á performed the lab work and wrote the first draft of the manuscript. EV-Á and PM analyzed the data. PM designed the customized R-Scripts used in this study. All authors assisted substantially with the manuscript development and also approved the submitted version.

FUNDING

This work was supported by FCT (Fundação para a Ciência e a Tecnologia, Portugal) through SFRH/BPD/109452/2015 in transitional norm DL 57/2016/CP1361/CT0037 both attributed to EV-Á, BiodivERsA funds and SFRH/BSAB/150485/2019 to ES, and UIDB/04326/2020 to CCMAR.

ACKNOWLEDGMENTS

We thank all the people and Institutions that collected plants and/or helped with the sampling collection: Liam Cronin, Estibaliz Berecibar, João Neiva, Catarina Mota, Luisa Martinez, Ignacio Bárbara, Txema Gorostiaga, Tânia Pereira, Dagmar Stengel, Anna Soler, Fabio Rindi and Henning Steen (Havforskningsinstituttet, Institute of Marine Research, Norway) and ASSEMBLE network (European Community) by the Remote

access platform (ASSEMBLE Grant Agreement No. 227799) for providing samples. We are also very grateful to Cristina Paulino and Marta Valente for their able help in the laboratory.

SUPPLEMENTARY MATERIAL

The Supplementary Material for this article can be found online at: <https://www.frontiersin.org/articles/10.3389/fpls.2022.818368/full#supplementary-material>

Supplementary Figure 1 | Plot of ΔK statistic of Evanno et al. (2005) detecting the number of K groups that best fit the data (best $K = 2$), (A) with data as 4x; (B) with data as 8x.

Supplementary Figure 2 | Genome constitution of the 442 genotypes inferred by STRUCTURE to 2, 3, and 4 inferred clusters based in 10 microsatellite loci, considering the data as 4x.

Supplementary Figure 3 | Genome constitution of the 442 genotypes inferred by STRUCTURE to 2, 3, and 4 inferred clusters based in 10 microsatellite loci, considering the data as 8x.

Supplementary Figure 4 | Principal component analyses (PCA) based on allelic variation at 10 loci, considering the data as (A) tetraploid 4x and (B) octoploid 8x. PCAs with *Porphyra linearis* genotypes in red (north Europe light red, south Europe dark red), *Porphyra dioica* genotypes in blue (central Europe dark blue, south Europe light blue), Winter form of *P. dioica* in blue surrounded by a black circle and hybrids or genotypes with combined genomes in gray.

Supplementary Appendix 1 | Input file with the 442 genotypes used in this study.

Supplementary Appendix 2 | R Script to run Structure with input file coded as 4x.

REFERENCES

- Arnold, M. L., Sapir, Y., and Martin, N. H. (2008). Genetic exchange and the origin of adaptations: prokaryotes to primates. *Philos. Trans. R. Soc. B Biol. Sci.* 363, 2813–2820. doi: 10.1098/rstb.2008.0021
- Bermejo, R., Chefaoui, R. M., Engelen, A. H., Buonomo, B., Neiva, J., Ferreira-Costa, J., et al. (2018). Marine forests of the Mediterranean-Atlantic *Cystoseira tamariscifolia* complex show a southern Iberian genetic hotspot and no reproductive isolation in parapatry. *Sci. Rep.* 8:10427. doi: 10.1038/s41598-018-28811-1
- Blouin, N. A., and Brawley, S. H. (2012). An AFLP-based test of clonality in widespread, putatively asexual populations of *Porphyra umbilicalis* (Rhodophyta) in the Northwest Atlantic with an in silico analysis for bacterial contamination. *Mar. Biol.* 159, 2723–2729. doi: 10.1007/s00227-012-2029-z
- Blouin, N. A., Brodie, J. A., Grossman, A. C., Xu, P., and Brawley, S. H. (2011). *Porphyra*: a marine crop shaped by stress. *Trends Plant Sci.* 16, 29–37. doi: 10.1016/j.tplants.2010.10.004
- Bray, T. L., Neefus, C. D., and Mathieson, A. C. (2007). A morphological and molecular investigation of the *Porphyra purpurea* complex in the Northwest Atlantic. *Nova Hedwigia* 84, 277–298. doi: 10.1127/0029-5035/2007/0084-0277
- Brodie, J., and Irvine, L. M. (1997). A comparison of *Porphyra dioica* sp. nov. and *P. purpurea* (Roth) C. Ag. (Rhodophyta: Bangiophycidae) in Europe. *Cryptogam. Algol.* 18, 283–297.
- Brodie, J., Mols Mortensen, A. M., Ramirez, M. E., Russell, S., and Rinkel, B. (2008). Making the links: towards a global taxonomy for the red algal genus *Porphyra* (Bangiales, Rhodophyta). *J. Appl. Phycol.* 20, 939–949. doi: 10.1007/s10811-008-9315-7
- Brodie, J. A., and Irvine, L. M. (2003). *Seaweeds of the British Isles: Volume 1 Rhodophyta. Part 3B Bangiophycidae. Seaweeds of the British Isles*. London: Natural History Museum.
- Broom, J. E., Nelson, W. A., Farr, T. J., Phillips, L. E., and Clayton, M. (2010). Relationships of the *Porphyra* (Bangiales, Rhodophyta) flora of the Falkland Islands: a molecular survey using rbcL and nSSU sequence data. *Aust. Syst. Bot.* 23, 27–37. doi: 10.1071/SB09033
- Budd, A. F., and Pandolfi, J. M. (2010). Evolutionary novelty is concentrated at the edge of coral species distributions. *Science* 328, 1558–1561. doi: 10.1126/science.1188947
- Butterfield, N. J. (2000). *Bangiomorpha pubescens* n. gen., n.sp.: implication for the evolution of sex, multicellularity, and the Mesoproterozoic/Neoproterozoic radiation of eukaryotes. *Paleobiology* 26, 386–404. doi: 10.1666/0094-8373(2000)026<0386:BPNGNS>2.0.CO;2
- Clement, M., Snell, Q., Walker, P., Posada, D., and Crandall, K. (2002). TCS: estimating gene genealogies. *Parallel Distrib. Process. Symp. Int. Proc.* 2:184. doi: 10.1109/IPDPS.2002.1016585
- Conway, E., and Cole, K. (1977). Studies in the Bangiaceae: structure and reproduction of the conchocelis of *Porphyra* and *Bangia* in culture (Bangiales, Rhodophyceae). *Phycologia* 16, 205–216. doi: 10.2216/i0031-8884-16-2-205.1
- De Silva, H. N., Hall, A. J., Rikkerink, E., Mcneilage, M. A., and Fraser, L. G. (2005). Estimation of allele frequencies in polyploids under certain patterns of inheritance. *Heredity* 95, 327–334. doi: 10.1038/sj.hdy.6800728
- Dumilag, R. V., and Monotilla, W. D. (2018). Molecular diversity and biogeography of Philippine foliose Bangiales (Rhodophyta). *J. Appl. Phycol.* 30, 173–186. doi: 10.1007/s10811-017-1201-8
- Eriksen, R. L., Green, L. A., and Klein, A. S. (2016). Genetic variation within and among asexual populations of *Porphyra umbilicalis* Kützinger (Bangiales, Rhodophyta) in the Gulf of Maine, USA. *Bot. Mar.* 59, 1–12. doi: 10.1515/bot-2015-0017
- Evanno, G., Regnaut, S., and Goudet, J. (2005). Detecting the number of clusters of individuals using the software structure: a simulation study. *Mol. Ecol.* 14, 2611–2620. doi: 10.1111/j.1365-294X.2005.02553.x
- Excoffier, L., Smouse, P. E., and Quattro, J. M. (1992). Analysis of molecular variance inferred from metric distances among DNA haplotypes: application to human mitochondrial DNA restriction data. *Genetics* 131, 479–491. doi: 10.1093/genetics/131.2.479
- Fujio, Y., Gil Kodaka, P. L., and Hara, M. (1985). Genetic differentiation and amount of genetic variability in natural populations of the haploid laver *Porphyra yezoensis*. *Jpn. J. Genet.* 60, 347–354. doi: 10.1266/jjg.60.347
- Fujio, Y., Gil-Kodaka, P., Hara, M., and Akiyama, K. (1988). Electrophoretic variants characteristic of heterozygotes in haploid laver *Porphyra* sp. *Nippon Suisan Gakkaishi* 54, 969–974. doi: 10.2331/suisan.54.969
- Fujio, Y., Tanaka, M. Y., Hara, M., and Akiyama, K. (1987). Enzyme polymorphism and population structure of the haploid laver *Porphyra yezoensis*. *Nippon Suisan Gakkaishi* 53, 357–362. doi: 10.2331/suisan.53.357
- Gil-Kodaka, P. L., Hara, M., Akiyama, K., and Fujio, Y. (1988). Genetic differentiation between natural and cultured populations of *Porphyra yezoensis*. *Tohoku J. Agric. Res.* 38, 27–34.
- Goff, L. J., and Coleman, A. W. (1990). “DNA microspectrofluorometric studies,” in *Biology of the Red Algae*, eds K. M. Cole and R. G. Sheath (New York, NY: Cambridge University Press), 43–72.
- Greville, R. K. (1830). *Algae Britannicae, or Descriptions of the Marine and Other Inarticulated Plants of the British Islands, Belonging to the Order Algae; With Plates Illustrative of the Genera*. Edinburgh: McLachlan & Stewart; Baldwin & Cradock, [i]–lxxxviii, [1]–218, l, 1–19.
- Guillemin, M. L., Contreras-Porcía, L., Ramirez, M., Macaya, E. C., Contador, C. B., Woods, H., et al. (2016). The bladed Bangiales (Rhodophyta) of the South Eastern Pacific: molecular species delimitation reveals extensive diversity. *Mol. Phylogenet. Evol.* 94, 814–826. doi: 10.1016/j.ympev.2015.09.027
- Guiry, M. D., and Guiry, G. M. (2021). *AlgaeBase*. Galway: National University of Ireland.
- Guiry, M. D., and West, J. A. (1983). Life history and hybridization studies on *Gigartina stellata* and *Petrocelis cruenta* (Rhodophyta) in the north Atlantic. *J. Phycol.* 19, 474–494. doi: 10.1111/j.0022-3646.1983.00474.x
- Hong, Y. K., Coury, D. A., Polne-Fuller, M., and Biber, A. (1992). Lithium chloride extraction of DNA from the seaweed *Porphyra perforata* (Rhodophyta). *J. Phycol.* 28, 217–220. doi: 10.1111/j.0022-3646.1992.00717.x

- Klein, A. S., Mathieson, A. C., Neefus, C. D., Cain, D. F., Taylor, H. A., Teasdale, B. W., et al. (2003). Identification of Northwest Atlantic *Porphyra* (Bangiales, Bangiales) based on sequence variation in nuclear SSU and plastid *rbcL* genes. *Phycologia* 42, 109–122. doi: 10.2216/i0031-8884-42-2-109.1
- Kucera, H., and Saunders, G. W. (2012). A survey of Bangiales (Rhodophyta) based on multiple molecular markers reveals cryptic diversity. *J. Phycol.* 48, 69–82. doi: 10.1111/j.1529-8817.2012.01193.x
- Kumar, S., Stecher, G., Li, M., Knyaz, C., and Tamura, K. (2018). MEGA X: molecular evolutionary genetics analysis across computing platforms. *Mol. Biol. Evol.* 35, 1547–1549. doi: 10.1093/molbev/msy096
- Lindstrom, S. C. (1993). Inter and intrapopulation genetic variation in species of *Porphyra* (Rhodophyta: Bangiales) from British Columbia and adjacent waters. *J. Appl. Phycol.* 5, 53–62. doi: 10.1007/BF02182422
- Lindstrom, S. C., and Cole, K. M. (1993). The systematics of *Porphyra*: character evolution in closely related species. *Hydrobiologia* 260, 151–157. doi: 10.1007/BF00049014
- Lindstrom, S. C., and Fredericq, S. (2003). *rbcL* gene sequences reveal relationships among north-east Pacific species of *Porphyra* (Bangiales, Rhodophyta) and a new species, *P. aestivalis*. *Phycol. Res.* 51, 211–224.
- Littler, M. M., and Littler, D. S. (1980). The evolution of thallus form and survival strategies in benthic marine macroalgae: field and laboratory tests of a functional form model. *Am. Natural.* 116, 25–44. doi: 10.1086/283610
- Littler, M. M., Littler, D. S., and Taylor, P. R. (1983). Evolutionary strategies in a tropical barrier reef system: functional-form groups of marine macroalgae. *J. Phycol.* 19, 223–231. doi: 10.1111/j.0022-3646.1983.00229.x
- Malay, M. C., and Paulay, G. (2010). Peripatric speciation drives diversification and distributional pattern of reef hermit crabs (Decapoda: Diogenidae: Calcinus). *Evolution* 64, 634–662. doi: 10.1111/j.1558-5646.2009.00848.x
- Mallet, J. (2005). Hybridization as an invasion of the genome. *Trends Ecol. Evol.* 20, 229–237. doi: 10.1016/j.tree.2005.02.010
- Matschiner, M., and Salzburger, W. (2009). TANDEM: integrating automated allele binning into genetics and genomics workflows. *Bioinformatics* 25, 1982–1983. doi: 10.1093/bioinformatics/btp303
- Meirmans, P. G. (2015). Seven common mistakes in population genetics and how to avoid them. *Mol. Ecol.* 24, 3223–3231. doi: 10.1111/mec.13243
- Meirmans, P. G. (2020). GENODIVE version 3.0: easy-to-use software for the analysis of genetic data of diploids and polyploids. *Mol. Ecol. Resour.* 20, 1126–1131. doi: 10.1111/1755-0998.13145
- Meirmans, P. G., Liu, S., and van Tienderen, P. H. (2018). The analysis of polyploid genetic data. *J. Hered.* 109, 283–296. doi: 10.1093/jhered/esy006
- Miura, W., Fujio, Y., and Suto, S. (1979). Genetic differentiation between the wild and cultured populations of *Porphyra yezoensis*. *Tohoku J. Agric. Res.* 30, 114–125.
- Mols-Mortensen, A., Neefus, C. D., Poul Møller, P., and Brodie, J. (2014). Diversity and distribution of foliose Bangiales (Rhodophyta) in West Greenland: a link between the North Atlantic and North Pacific. *Eur. J. Phycol.* 49, 1–10. doi: 10.1080/09670262.2013.871062
- Mols-Mortensen, A. M., Neefus, C. D., Nielsen, R., Gunnarsson, K., Egilsdóttir, S., Pedersen, P. M., et al. (2012). New insights into the biodiversity and generic relationships of foliose Bangiales (Rhodophyta) in Iceland and the Faroe Islands. *Eur. J. Phycol.* 47, 146–159. doi: 10.1080/09670262.2012.666678
- Neiva, J., Assis, J., Fernandes, F., Pearson, G. A., and Serrão, E. A. (2014). Species distribution models and mitochondrial DNA phylogeography suggest an extensive biogeographical shift in the high-intertidal seaweed *Pelvetia canaliculata*. *J. Biogeogr.* 41, 1137–1148. doi: 10.1111/jbi.12278
- Neiva, J., Pearson, G. A., Valero, M., and Serrão, E. A. (2010). Surfing the wave on a borrowed board: range expansion and spread of introgressed organellar genomes in the seaweed *Fucus ceranoides* L. *Mol. Ecol.* 19, 4812–4822. doi: 10.1111/j.1365-294X.2010.04853.x
- Niwa, K., Abe, T., and Kobiyama, A. (2018). Possibility of polyploidy breeding using cryptic species in the marine crop *Pyropia yezoensis* (Bangiales, Rhodophyta). *J. Appl. Phycol.* 30, 1197–1205. doi: 10.1007/s10811-017-1317-x
- Niwa, K., Kobiyama, A., and Sakamoto, T. (2010). Interspecific hybridization in the haploid blade-forming marine crop *Porphyra* (Bangiales, Rhodophyta): occurrence of allopolyploidy in surviving F1 gametophytic blades. *J. Phycol.* 46, 693–702. doi: 10.1111/j.1529-8817.2010.00853.x
- Niwa, K., and Sakamoto, T. (2010). Allopolyploidy in natural and cultivated populations of *Porphyra* (Bangiales, Rhodophyta). *J. Phycol.* 46, 1097–1105. doi: 10.1111/j.1529-8817.2010.00897.x
- Ohme, M., and Miura, A. (1988). Tetrad analysis in conchospore germlings of *Porphyra yezoensis* (Rhodophyta, Bangiales). *Plant Sci.* 57, 135–140. doi: 10.1016/0168-9452(88)90079-9
- Pritchard, J. K., Stephens, M., and Donnelly, P. (2000). Inference of population structure using multilocus genotype data. *Genetics* 155, 945–959. doi: 10.1093/genetics/155.2.945
- Reddy, M. M., De Clerck, O., Leliaert, F., Anderson, R. J., and Bolton, J. (2018). A rosette by any other name: species diversity in the Bangiales (Rhodophyta) along the South African coast. *Eur. J. Phycol.* 53, 67–82. doi: 10.1080/09670262.2017.1376256
- Sánchez, N., Végés, A., Peteiro, C., Sutherland, J. E., and Brodie, J. (2014). Diversity of bladed Bangiales (Rhodophyta) in western Mediterranean: recognition of the genus *Themis* and descriptions of *T. ballesterosii* sp. nov., *T. iberica* sp. nov., and *Pyropia parva* sp. nov. *J. Phycol.* 50, 908–929. doi: 10.1111/jpy.12223
- Schaum, E., and Collins, S. (2014). Plasticity predicts evolution in a marine alga. *Proc. R. Soc. B* 281:20141486. doi: 10.1098/rspb.2014.1486
- Stecher, G., Tamura, K., and Kumar, S. (2020). Molecular evolutionary genetics analysis (MEGA) for macOS. *Mol. Biol. Evol.* 37, 1237–1239. doi: 10.1093/molbev/msz312
- Sutherland, J. E., Lindstrom, S. C., Nelson, W. A., Brodie, J., Lynch, M. D., Hwang, M. S., et al. (2011). A new look at an ancient order: generic revision of the Bangiales (Rhodophyta). *J. Phycol.* 47, 1131–1151. doi: 10.1111/j.1529-8817.2011.01052.x
- Tamura, K., and Nei, M. (1993). Estimation of the number of nucleotide substitutions in the control region of mitochondrial DNA in humans and chimpanzees. *Mol. Biol. Evol.* 10, 512–526.
- Teasdale, B. W., and Klein, A. S. (2010). Genetic variation and biogeographical boundaries within the red alga *Porphyra umbilicalis* (Bangiales) Rhodophyta. *Bot. Mar.* 53, 413–417. doi: 10.1515/bot.2010.050
- van Oppen, M. J., Draisma, S. G., Olsen, J. L., and Stam, W. T. (1995). Multiple trans-Arctic passages in the red alga *Phycodryus rubens*: evidence from nuclear rDNA ITS sequences. *Mar. Biol.* 123, 179–188. doi: 10.1007/BF00350338
- Varela-Álvarez, E. (2002). *Phenology, Life History and Genetics of Porphyra linearis Greville, a Candidate for Nori Mariculture in Europe*. Ph.D. thesis (unpublished dissertation). Galway: National University of Ireland, 219.
- Varela-Álvarez, E., Loureiro, J., Meirmans, P. G., Castro, M., and Serrão, E. A. (2021). Genomes vary in size and spatial patterns within chimeric blades of *Porphyra* spp. *Front. Mar. Sci.* 8:227. doi: 10.3389/fmars.2021.628183
- Varela-Álvarez, E., Loureiro, J., Paulino, C., and Serrão, E. A. (2018b). Polyploid lineages in the *Porphyra*. *Sci. Rep.* 8:8696. doi: 10.1038/s41598-018-26796-5
- Varela-Álvarez, E., Balau, A. C., Paulino, C., Berecibar, E., Pearson, G., and Serrão, E. A. (2018a). Isolation and characterization of microsatellite markers for the red alga *Porphyra umbilicalis*. *Plant Genet. Resour.* 16, 390–393. doi: 10.1017/S147926211700034X
- Varela-Álvarez, E., Paulino, C., and Serrão, E. A. (2017). Development and characterization of twelve microsatellite markers for *Porphyra linearis* Greville. *Genetica* 145, 127–130. doi: 10.1007/s10709-016-9941-y
- Varela-Álvarez, E., Stengel, D., and Guiry, M. D. (2004). The use of image processing in assessing conchocelis growth and conchospore production in *Porphyra linearis*. *Phycologia* 43:287. doi: 10.2216/i0031-8884-43-3-282.1
- Varela-Álvarez, E., Stengel, D. B., and Guiry, M. D. (2007). Seasonal growth and phenotypic variation in *Porphyra linearis* (Rhodophyta) populations on the west coast of Ireland. *J. Phycol.* 43, 90–100. doi: 10.1111/j.1529-8817.2006.00300.x
- Varela-Álvarez, E., Stengel, D. B., Rindi, F., and Guiry, M. D. (2005). Alternation of nuclear phases and chromosome numbers in *Porphyra linearis* (Bangiales, Rhodophyta) from western Ireland and Maine, USA. *Phycologia* 44, 61–65.
- Weiss, A., Costa, R., and Wichard, T. (2017). Morphogenesis of *Ulva mutabilis* (Chlorophyta) induced by *Maribacter* species (Bacteroidetes, Flavobacteriaceae). *Bot. Mar.* 60, 197–206. doi: 10.1515/bot-2016-0083
- West-Eberhard, M. J. (2003). *Developmental Plasticity and Evolution*. New York, NY: Oxford University Press. doi: 10.1093/oso/9780195122343.001.0001

- Xu, K., Tang, X., Wang, L., Yu, X., Sun, P., and Mao, Y. (2017). Divergence time, historical biogeography and evolutionary rate estimation of the order Bangiales (Rhodophyta) inferred from multilocus data. *Chin. J. Oceanol. Limnol.* 36, 870–881. doi: 10.1007/s00343-018-7054-4
- Yang, L. E., Zhou, W., Hu, C. M., Deng, Y. Y., Xu, G. P., and Zhang, T. (2018). A molecular phylogeny of the bladed Bangiales (Rhodophyta) in China provides insights into biodiversity and biogeography of the genus *Pyropia*. *Mol. Phylogenet. Evol.* 120, 94–102. doi: 10.1016/j.ympev.2017.11.009
- Zhong, C., and Yan, X. (2020). Haploid spontaneous diploidization during apogamy of male gametophytes in *Pyropia haitanensis* (Bangiales, Rhodophyta). *J. Appl. Phycol.* 32, 1395–1403. doi: 10.1007/s10811-019-01981-9
- Zuccarello, G. C., Schidlo, N., Mcivor, L., and Guiry, M. D. (2005). A molecular re-examination of speciation in the intertidal red alga *Mastocarpus stellatus* (Gigartinales, Rhodophyta) in Europe. *Eur. J. Phycol.* 40, 337–344. doi: 10.1080/09670260500254743

Conflict of Interest: The authors declare that the research was conducted in the absence of any commercial or financial relationships that could be construed as a potential conflict of interest.

Publisher's Note: All claims expressed in this article are solely those of the authors and do not necessarily represent those of their affiliated organizations, or those of the publisher, the editors and the reviewers. Any product that may be evaluated in this article, or claim that may be made by its manufacturer, is not guaranteed or endorsed by the publisher.

Copyright © 2022 Varela-Álvarez, Meirmans, Guiry and Serrão. This is an open-access article distributed under the terms of the Creative Commons Attribution License (CC BY). The use, distribution or reproduction in other forums is permitted, provided the original author(s) and the copyright owner(s) are credited and that the original publication in this journal is cited, in accordance with accepted academic practice. No use, distribution or reproduction is permitted which does not comply with these terms.

GLOSSARY

Allopolyploid: are polyploids with chromosomes derived from two or more diverged taxa.

Chimera: an individual blade with cells of different genetic constitution

Diploid: a genome containing two copies of each chromosome.

Haploid: a genome containing one copy of each chromosome.

Mixoploid blades: blades with different ploidy levels.

Polygenomy: Term used by Goff and Coleman (1990) to describe nuclei that could be polyploid or polytene (with polytene chromosomes).

Polytene chromosome: extra-large chromosomes consisting of multiple replicated DNA strands (chromatids).

Polyploid: a genome containing more than two homologous sets of chromosomes.

Tetrad: the four products of meiosis, these remain attached in the life history of some taxa, including *Porphyra*.