



The Importance of Stem Photosynthesis for Two Desert Shrubs Across Different Groundwater Depths

Ran Liu^{1,2}, Xiaolong Feng^{1,2,3}, Congjuan Li^{4*}, Jie Ma^{1,2}, Yugang Wang^{1,2} and Yan Li^{1,2}

¹ State Key Lab of Desert and Oasis Ecology, Xinjiang Institute of Ecology and Geography, Chinese Academy of Sciences, Urumqi, China, ² Fukang National Station of Observation and Research for Desert Ecosystem, Xinjiang, China, ³ University of Chinese Academy of Sciences, Beijing, China, ⁴ Xinjiang Institute of Ecology and Geography, Chinese Academy of Sciences, Urumqi, China

OPEN ACCESS

Edited by:

Marta Silva Lopes,
Institute of Agrifood Research
and Technology (IRTA), Spain

Reviewed by:

Junxiang Liu,
Chinese Academy of Forestry, China
Eleinis Ávila-Lovera,
Smithsonian Tropical Research
Institute, Panama
Wilmer Tezara,
Central University of Venezuela,
Venezuela

*Correspondence:

Congjuan Li
li_congjuan@163.com

Specialty section:

This article was submitted to
Plant Physiology,
a section of the journal
Frontiers in Plant Science

Received: 29 October 2021

Accepted: 10 February 2022

Published: 10 March 2022

Citation:

Liu R, Feng X, Li C, Ma J, Wang Y
and Li Y (2022) The Importance
of Stem Photosynthesis for Two
Desert Shrubs Across Different
Groundwater Depths.
Front. Plant Sci. 13:804786.
doi: 10.3389/fpls.2022.804786

Water availability could alter multiple ecophysiological processes such as water use strategy, photosynthesis, and respiration, thereby modifying plant water use and carbon gain. However, a lack of field observations hinders our understanding of how water availability affects stem photosynthesis at both organ and plant levels of desert shrubs. In this study, we measured gas exchange and oxygen stable isotopes to quantify water sources, stem recycling photosynthesis, and whole-plant carbon balance in two coexisting *Haloxylon* species (*Haloxylon ammodendron* and *Haloxylon persicum*) at different groundwater depths in the Gurbantonggut Desert. The overall aim of the study was to analyze and quantify the important role of stem recycling photosynthesis for desert shrubs (*Haloxylon* species) under different groundwater depths. The results showed that (1) regardless of changes in groundwater depth, *H. ammodendron* consistently used groundwater and *H. persicum* used deep soil water as their main water source, with greater than 75% of xylem water being derived from groundwater and deep soil water for the two species, respectively; (2) stem recycling photosynthesis refixed 72–81% of the stem dark respiration, and its contribution to whole-plant carbon assimilation was 10–21% for the two species; and (3) deepened groundwater increased stem water use efficiency and its contribution to whole-plant carbon assimilation in *H. persicum* but not in *H. ammodendron*. Our study provided observational evidence that deepened groundwater depth induced *H. persicum* to increase stem recycling photosynthetic capacity and a greater contribution to whole-plant carbon assimilation, but this did not occur on *H. ammodendron*. Our study indicates that stem recycling photosynthesis may play an important role in the survival of desert shrubs in drought conditions.

Keywords: desert ecosystem, refixation, carbon balance, water use strategy, stem recycling photosynthesis

INTRODUCTION

Leaves are widely accepted to be the primary organ where photosynthetic carbon assimilation occurs in plants (White et al., 2016). However, there is mounting evidence challenging this paradigm because stems can also assimilate carbon, providing an alternative and significant carbon source in plants (Saveyn et al., 2010; Bloemen et al., 2013a; Cernusak and Cheesman, 2015;

Henry et al., 2020). Stem photosynthesis has been reported in a wide variety of tree species, with instantaneous rates ranging from 0.5 to 9 $\mu\text{mol m}^{-2} \text{s}^{-1}$, and although mostly this is refixation of respiratory CO_2 , stems rarely achieve net positive assimilation (Nilsen, 1995; Pfanz et al., 2002; Ávila et al., 2014; Vandegehuchte et al., 2015). The CO_2 fixed by stem photosynthesis is derived from either stems themselves through stem respiration in living cells or belowground root respiration, which subsequently transports upward *via* the transpiration stream (Bloemen et al., 2013b). Accumulating evidence has suggested that stem photosynthesis is an additional mechanism of carbon sequestration across biomes (Ávila et al., 2014; Vandegehuchte et al., 2015; De Roo et al., 2020).

With episodes of drought events increasing across most of the world (IPCC, 2019), photosynthetic stems may become an advantage for maintaining positive carbon balance at the whole-plant level, such as high water and carbon use efficiency. For example, up to 97% of the CO_2 released from young branches of birch (*Betula pendula* Roth.) was refixed *via* stem photosynthesis (Wittmann et al., 2006). Similarly, young *Eucalyptus globules* seedlings have an increased capacity to refix internally respired CO_2 (up to 96%) (Eyles et al., 2009). Cernusak and Marshall (2000) demonstrated that the water use efficiency of gross photosynthesis in Western white pine was 50 times higher in the bark than in the leaves. Additionally, stem photosynthesis may also help in the maintenance of hydraulic functioning, too (Sevanto, 2014; Ávila and Tezara, 2018). A recent study showed that stem photosynthesis can also drive bark water uptake to refill embolized vessels in excised *Salix matsudana* branches that are submerged in deionized water (Liu et al., 2019). Thus, it can be seen that stem photosynthesis plays an important role during drought stress and may become important for plant survival when leaf photosynthesis and phloem transport are limited (Cernusak and Cheesman, 2015; Wittmann and Pfanz, 2018; Hubeau et al., 2019; De Roo et al., 2020; Henry et al., 2020).

The Gurbantonggut Desert is the second largest desert in northwest China. The woody layer is dominated by *Haloxylon ammodendron* and *Haloxylon persicum* Bunge ex Boiss, which are phreatophytes and respond non-linearly to growing season precipitation (Dai et al., 2015). Both species of *Haloxylon* have a lower photosynthetic active area, as twigs replace leaves to perform photosynthetic functions (Xu et al., 2007; Zou et al., 2010). Most stems are lignified from twigs and have switched to twig-stem CO_2 assimilation in drought stress after twigs senesce or abscission (Smith et al., 1996). As a result, stem photosynthesis may be an important, though often overlooked, component of plant carbon balance (Steppe et al., 2015; Vandegehuchte et al., 2015; Bloemen et al., 2016; Tarvainen et al., 2018; De Roo et al., 2020). Despite recent interest in stem photosynthesis and its effect on hydraulic integrity (Schmitz et al., 2012; Cernusak and Cheesman, 2015; Tarvainen et al., 2018; Liu et al., 2019; De Roo et al., 2020), less is known about how photosynthetic stems respond to drought in desert shrubby species.

This study aims to fill this knowledge gap by characterizing the stem carbon dynamics in *Haloxylon* species growing under two different groundwater depths. We measured two *Haloxylon* species native to the Gurbantonggut Desert *in situ*. Across

two groundwater depths, stem gas exchange, environmental factors, and plant water sources were monitored with the goal of (1) assessing plant water use strategy; (2) comparing the differences in carbon exchange dynamics and water use efficiency of stems; (3) quantifying refixation of carbon released from dark respiration and the contribution of stem recycling photosynthesis to whole-plant carbon assimilation. We hypothesized that deeper groundwater depth will increase the contribution of stem assimilation at the whole plant level, as well as increase the ratio of stem area to leaf area or decrease leaf photosynthetic capacity. We hope to achieve a deep understanding of the impact of groundwater depth changes on stem photosynthesis and whole-tree carbon balance in desert ecosystems, resulting in better predictions under projected climatic change scenarios.

MATERIALS AND METHODS

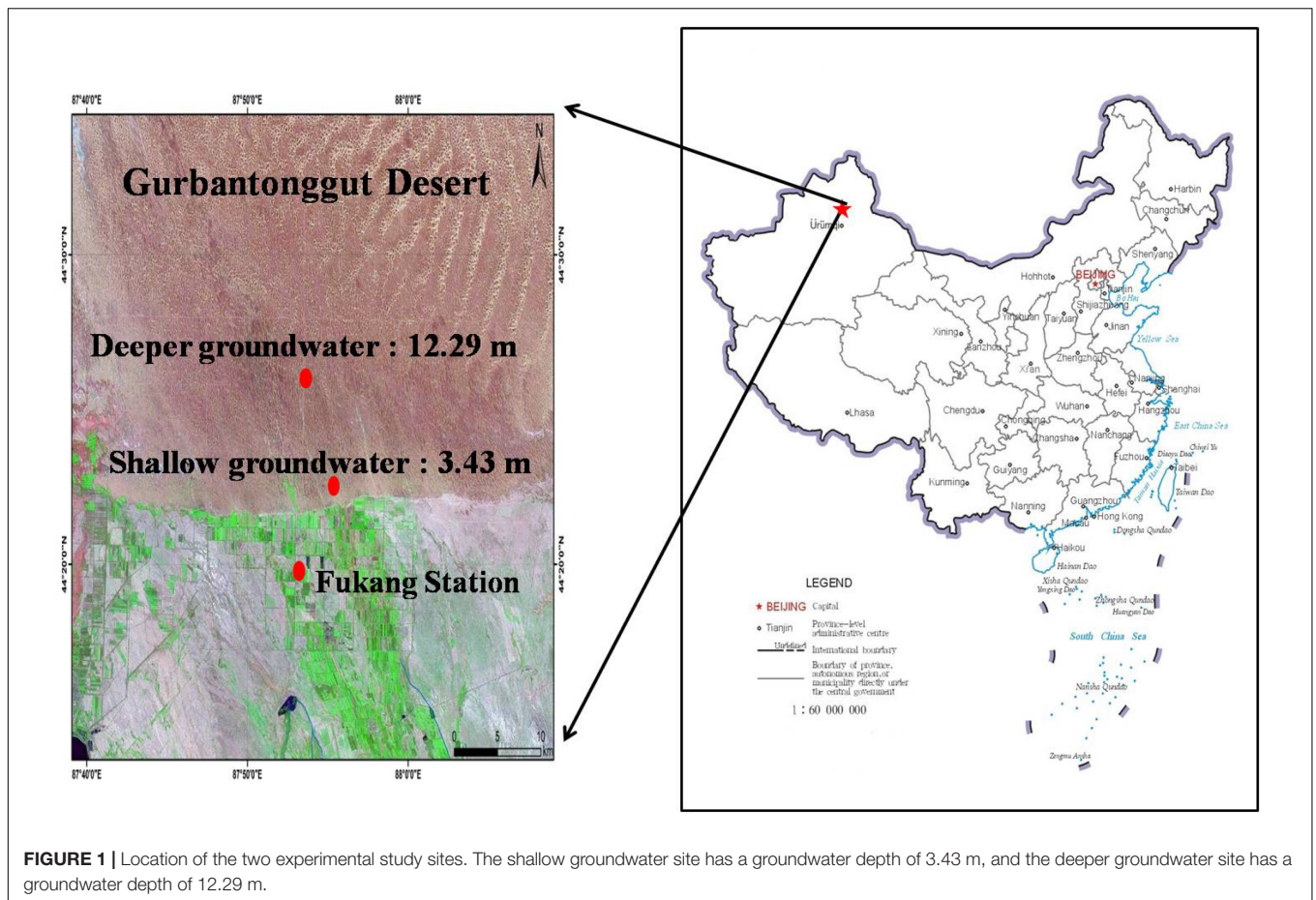
Study Site

This study was carried out near the Fukang Station of Desert Ecology and the southern periphery of the Gurbantonggut Desert in Central Asia. This region has a continental arid temperate climate, with a hot, dry summer and a cold winter. The air temperature ranges from a minimum of -42.2°C in winter to a maximum of 44.2°C in summer, and the annual mean temperature is 6.6°C . Annual mean precipitation is 163 mm, around 75% of which falls during the growing season (May–October). Precipitation prior to the growing season (November–April) is mostly in the form of snow, which covers the soil for most of this period and melts in April (Zhou et al., 2012). The soil type is desert solonetz at 0–100 cm depth, with eolian sandy soil on top. The groundwater depth ranges from 3 m in the Fukang Station of Desert Ecology to 16 m in the southern periphery of the Gurbantonggut Desert.

Two similar shrub-dominated desert communities were selected. Both sites are dominated by deep-rooted phreatophyte shrubs that depend primarily on groundwater for survival (Xu et al., 2007; Dai et al., 2015). The two sites were 13.5 km apart and located at the southern periphery of the Gurbantonggut desert, <7.5 km and <21.0 km away from Fukang Desert Station, and are dominated by *H. ammodendron* and *H. persicum*. The groundwater depth is 3.43 ± 0.02 m and 12.29 ± 0.19 m at these two sites. Throughout this study, we refer to the site with a groundwater depth of 3.43 m as a shallow groundwater site, and the site with a groundwater depth of 12.29 m as a deeper groundwater site (Figure 1).

Leaf and Stem Recycling Photosynthetic Measurements

All photosynthetic measurements were carried out on clear days during July–August 2020. The photosynthetic light-response curve (09:00–14:00) and diurnal variation in instantaneous gas exchange rates (08:00–18:00) of stems were measured using one portable open gas exchange system (Li-6400XT, Li-Cor Inc., Lincoln, NE, United States) on consecutive campaigns of 2–3 days. For stem photosynthetic light-response curves, photosynthetic photon flux density (PPFD) was supplied by a



15 × 7 cm stem chamber with a red-blue light source (*P*-Chamber, MilletHill Biotech Co. Ltd., Shanghai, China) (Chang et al., 2020) and was reduced in a stepwise manner at 10 PPFD levels (2,000, 1,600, 1,200, 800, 400, 200, 150, 100, 50, and 0 $\mu\text{mol m}^{-2} \text{s}^{-1}$), and the other conditions in the chamber were set to 400 ppm and 1.5 kPa for CO_2 and atmospheric vapor pressure deficit (VPD), respectively. At each site, three stems with a diameter of 8–10 mm were selected for measurement in light and dark conditions. Each stem was allowed 6–8 min to equilibrate at each PPFD, and before measurements were recorded. Stem recycling photosynthetic light-response curve parameters were estimated using a modified rectangular hyperbola model (Equation 1):

$$P_g = \alpha \frac{(1 - \beta I)}{(1 + \gamma I)} - R_d \quad (1)$$

where P_g is the gross photosynthetic rate of the stem (including dark respiration), I is the PPFD, R_d is the daytime dark respiration rate, α is the initial slope of the photosynthetic light-response curve where $\text{PPFD} \approx 0 \mu\text{mol m}^{-2} \text{s}^{-1}$, and β and γ are coefficients that are independent of I and were obtained by curve fitting (Ye and Yu, 2008).

The diurnal photosynthetic patterns of leaves and stems were measured simultaneously for each species and at each

groundwater depth. Each measurement period of gas exchange lasted for approximately 10 h (between 08:00 and 18:00 h), and measurements were taken approximately every 2 h. A smart quantum sensor (MQ-500, Apogee, United States) was used to measure PPFDi at each measurement time point, and this value was manually entered into the Li-6400XT and *P*-Chamber to generate the corresponding irradiance. For the stem recycling photosynthetic rate (P_{stem}), positive net assimilation is, however, rarely reached, in most studies. Stem recycling photosynthesis was therefore assumed to be equal to the difference between the gas exchange rate under light (R_l) and dark (R_d) (Equation 2; Wittmann et al., 2006):

$$P_{stem} = |R_d - R_l| \quad (2)$$

Additionally, as stem recycling photosynthesis refixes respiratory losses from the stem, refixation was estimated using R_d and R_l as shown in the following equation (Cernusak and Marshall, 2000):

$$\% \text{Refixation} = \frac{|R_d - R_l|}{R_d} \quad (3)$$

To ensure the accuracy of stem recycling photosynthetic rate measurements, we used another method for cross-validation. A custom-made transparent polycarbonate chamber (15 cm × 7 cm × 7 cm) was attached to the stem, and CO_2 and

H₂O fluxes inside the chamber were measured using a portable, open gas exchange system (Li-840A, Li-Cor Inc., Lincoln, NE, United States). Measurements using the transparent chamber directly obtained the net gas exchange rate. To estimate the dark respiration rate, we covered the chamber with an opaque canvas cover, allowing stem recycling photosynthetic rate to be calculated as the difference between measurements in the light and the dark (**Supplementary Figure 1**). The detailed procedures are described by Huang and Li (2015).

Determining Water Use Strategies of Two Species

Oxygen stable isotope ($\delta^{18}\text{O}$) measurements were used to determine the water use strategy of both *Haloxylon* species at different groundwater depths. For each species at each site, four healthy plants with average canopy size were randomly selected. Plant xylem and soil samples were collected simultaneously on three consecutive clear days. Only sunlit twigs from each plant were sampled. Excised leaves were quickly decorticated and placed in screw-cap glass vials that were sealed using Parafilm and stored in a freezer until subsequent extraction of the xylem water for $\delta^{18}\text{O}$ analysis. Three soil cores were collected next to the sampled plants. Soil samples were collected at 20 cm intervals from the topsoil to the groundwater table. Four replicate soil samples at each layer were sampled and sealed in glass vials and frozen for soil water extraction and $\delta^{18}\text{O}$ analysis.

Xylem water and soil water were extracted using cryogenic vacuum distillation, and the extracted water was stored in sealed glass vials at 2°C. The oxygen isotopic composition of the water was determined using a liquid water isotope analyzer (LWIA, DLT-100, Los Gatos Research Inc., Mountain View, CA, United States). Two methods were used to determine the water use of the two species. One was the direct inference approach, which compares $\delta^{18}\text{O}$ composition between groundwater, the soil water profile, and xylem water by plotting them together. The other method was the IsoSource model, which determines the possible range of different water sources used by plants (Phillips and Gregg, 2003). Based on the similarities in the $\delta^{18}\text{O}$ values of soil water, the soil profile was divided into two sections, and the following two potential water sources were finally identified using a post-integrated method: (1) deep soil layer, which was the intermediated section between the upper soil layer (0–1 m) and the near groundwater layer; and (2) groundwater layer (0–1.5 m above the groundwater depth), which could be identified by a significant increase in soil water content (SWC) and has a similar isotopic composition to that of groundwater [For details on the application of the IsoSource model, refer to Liu et al. (2016) and Wu et al. (2019)].

Stem Water Use Efficiency and Environmental Measurements

Stem water use efficiency was calculated using the ratio of stem recycling photosynthesis rate to transpiration rate ($\mu\text{mol CO}_2 \text{ m}^{-2} \text{ s}^{-1} / \text{mmol H}_2\text{O m}^{-2} \text{ s}^{-1}$). Air temperature (T_{air}) (°C) and relative humidity (RH) (%) were measured at two sites every 10 s and averaged at 30 min intervals using a portable weather

station (S-THB-M008, Onset, Bourne, MA, United States). Values of T_{air} and RH were used to calculate the atmospheric VPD. A TDR 150 probe was used to measure soil temperature and volumetric water content at 5 and 10 cm soil depths (FieldScout TDR 150, spectrum Technologies, Aurora, IL, United States). To quantify the contribution of stem recycling photosynthesis to the entire plant, plants were destructively harvested at the end of all measurements and measured for total stem surface area and total leaf area using Vernier calipers and a leaf area meter (Li-3100, Li-Cor Inc., Lincoln, NE, United States), respectively. In this study, we used the following equation to calculate the contribution of stem photosynthesis to the entire plant:

$$\%P_{\text{stem}} = \frac{P_{\text{stem}} \times S_{\text{stem}}}{P_{\text{stem}} \times S_{\text{stem}} + P_{\text{leaf}} \times S_{\text{leaf}}} \quad (4)$$

where P_{stem} is stem recycling photosynthesis rate, S_{stem} is total stem surface area, P_{leaf} is net leaf photosynthesis rate, and S_{leaf} is total leaf surface area.

Statistical Analyses

All descriptive statistics and statistical analyses (including linear regression, one-way ANOVA, paired *t*-test, independent samples *t*-test) were conducted using the R software (version 3.3.1) (R Core Team, 2020). Given the small sample size ($n = 3\text{--}36$), significance levels of 0.05 and 0.10 were used to represent strong and moderate effects, respectively. All data visualization was performed using the Origin 2017 software package (OriginLab Corporation Northampton, MA, United States).

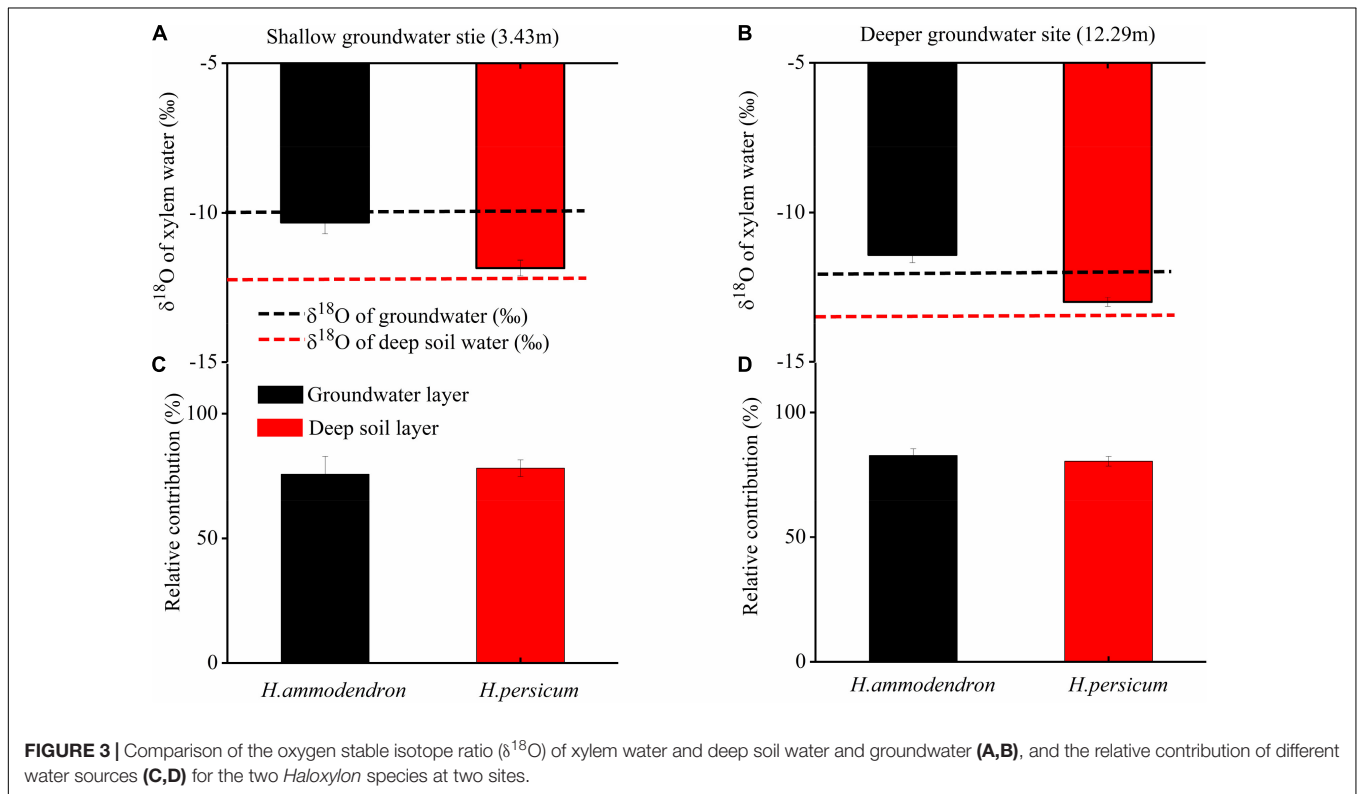
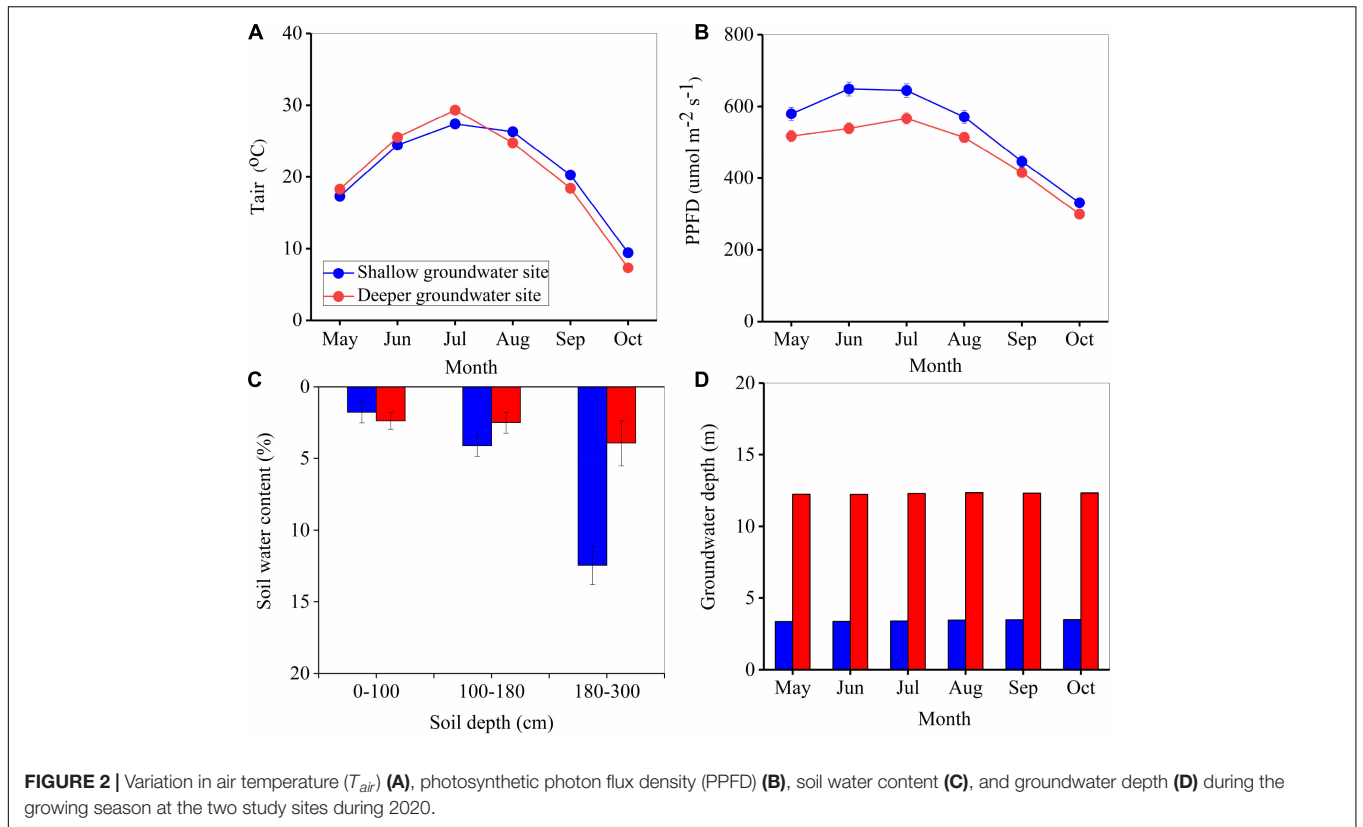
RESULTS

Meteorological and Groundwater Conditions in the Two Communities

The variation in the major meteorological conditions and groundwater depths in two sites during the growing season of 2020 are presented in **Figure 2**. Monthly average daily T_{air} and PPFD followed similar patterns at the two sites ($P > 0.05$) (**Figures 2A,B**), with maximum daily temperatures ranging from 27.5 to 29.0°C and PPFD ranging from 567 to 645 $\mu\text{mol m}^{-2} \text{ s}^{-1}$. Deeper groundwater depth resulted in lower soil water content, especially in 1.8–3.0 m soil layer, with values of 12.47 and 3.94% at two sites (**Figure 2C**). There was no significant difference in VPD between the two sites, with an average value of 1.67 kPa. In contrast, groundwater depths varied significantly between the two sites ($P < 0.01$) (**Figure 2D**), with an average groundwater depth of 3.43 ± 0.02 and 12.29 ± 0.02 for the shallow and deeper groundwater sites, respectively.

Water Use Strategy of Two *Haloxylon* Species

Variation in the water use strategies of the two *Haloxylon* species in two sites was used to determine if they may explain variability in stem photosynthesis. The values of $\delta^{18}\text{O}$ of xylem, each soil layer, and groundwater are shown in **Figure 3** and **Supplementary Figure 2**. Regardless of changes in groundwater



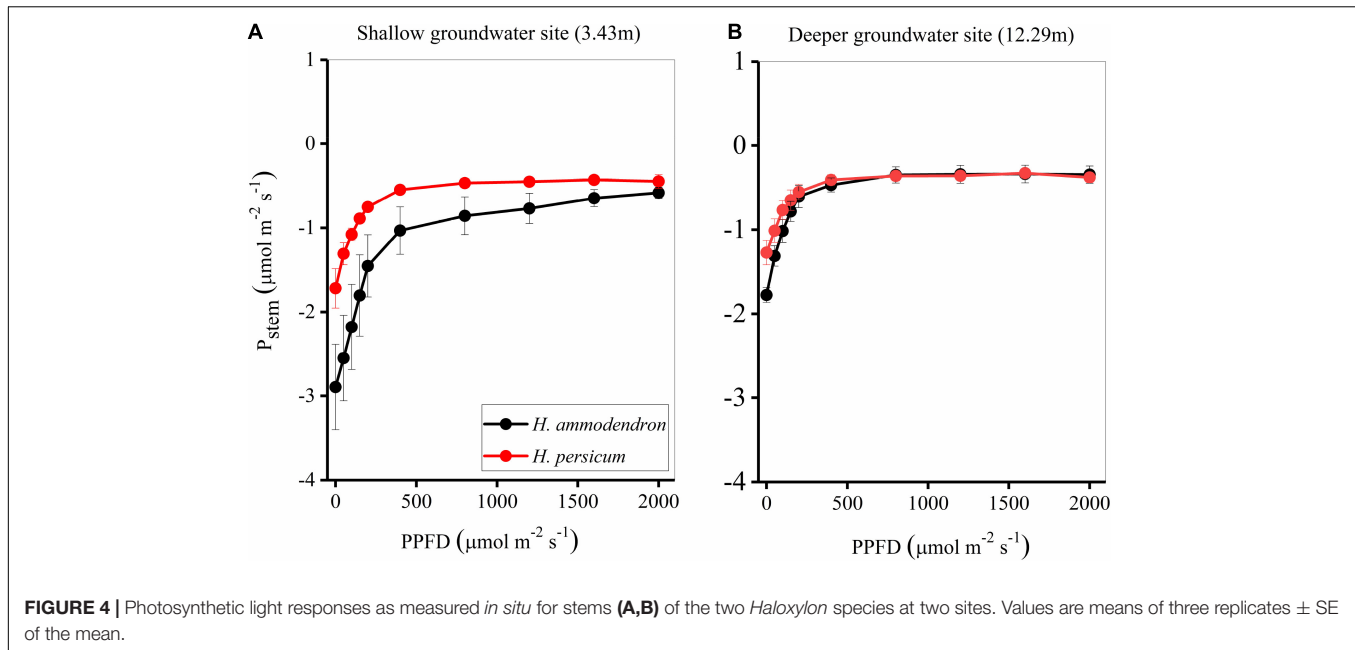


FIGURE 4 | Photosynthetic light responses as measured *in situ* for stems (A,B) of the two *Haloxylon* species at two sites. Values are means of three replicates \pm SE of the mean.

depth, *H. ammodendron* used similar water sources; the value of $\delta^{18}\text{O}$ of xylem water was much closer to the value of $\delta^{18}\text{O}$ of groundwater (Figures 3A,B): greater than 75% of the xylem water was derived from groundwater (Figures 3C,D). Similarly, *H. persicum* used deep soil water as its main water source; greater than 78% of the xylem water was derived from deep soil layers (Figure 3).

Photosynthetic Response to Light of Stems

Stems of both *Haloxylon* species became light-saturated at approximately $1,000 \mu\text{mol m}^{-2} \text{s}^{-1}$ PPFD (Figures 4A,B and Table 1). Both species had a lower R_d and maximum P_{max} at deeper groundwater sites, with the values of -1.80 and $-0.31 \mu\text{mol m}^{-2} \text{s}^{-1}$ for *H. ammodendron* and -1.29 and $-0.32 \mu\text{mol m}^{-2} \text{s}^{-1}$ for *H. persicum*. In contrast, the two species had a higher initial slope (α) at a deeper groundwater site (Figures 4A,B and Table 1).

TABLE 1 | Stem light response parameters for two *Haloxylon* species growing under different groundwater depths.

	Site	LSP	R_d	P_{max}	α
<i>H. ammodendron</i>	1	1272 (10)	2.98 (0.53)	-0.55 (0.04)	0.0136 (0.0015)
	2	1131 (89)	1.80 (0.09)	-0.31 (0.09)	0.0155 (0.0025)
<i>H. persicum</i>	1	989 (46)	1.81 (0.78)	-0.39 (0.16)	0.0088 (0.0025)
	2	1089 (196)	1.29 (0.15)	-0.32 (0.04)	0.0092 (0.0004)

Site 1, shallow groundwater depth; Site 2, deeper groundwater depth; LSP, light saturation point ($\mu\text{mol m}^{-2} \text{s}^{-1}$); R_d , dark respiration ($\mu\text{mol m}^{-2} \text{s}^{-1}$); P_{max} , light-saturated CO_2 uptake ($\mu\text{mol m}^{-2} \text{s}^{-1}$) was derived by applying a modified rectangular hyperbola model to light response data; α , initial slope. The values in parentheses represent SE ($n = 3$).

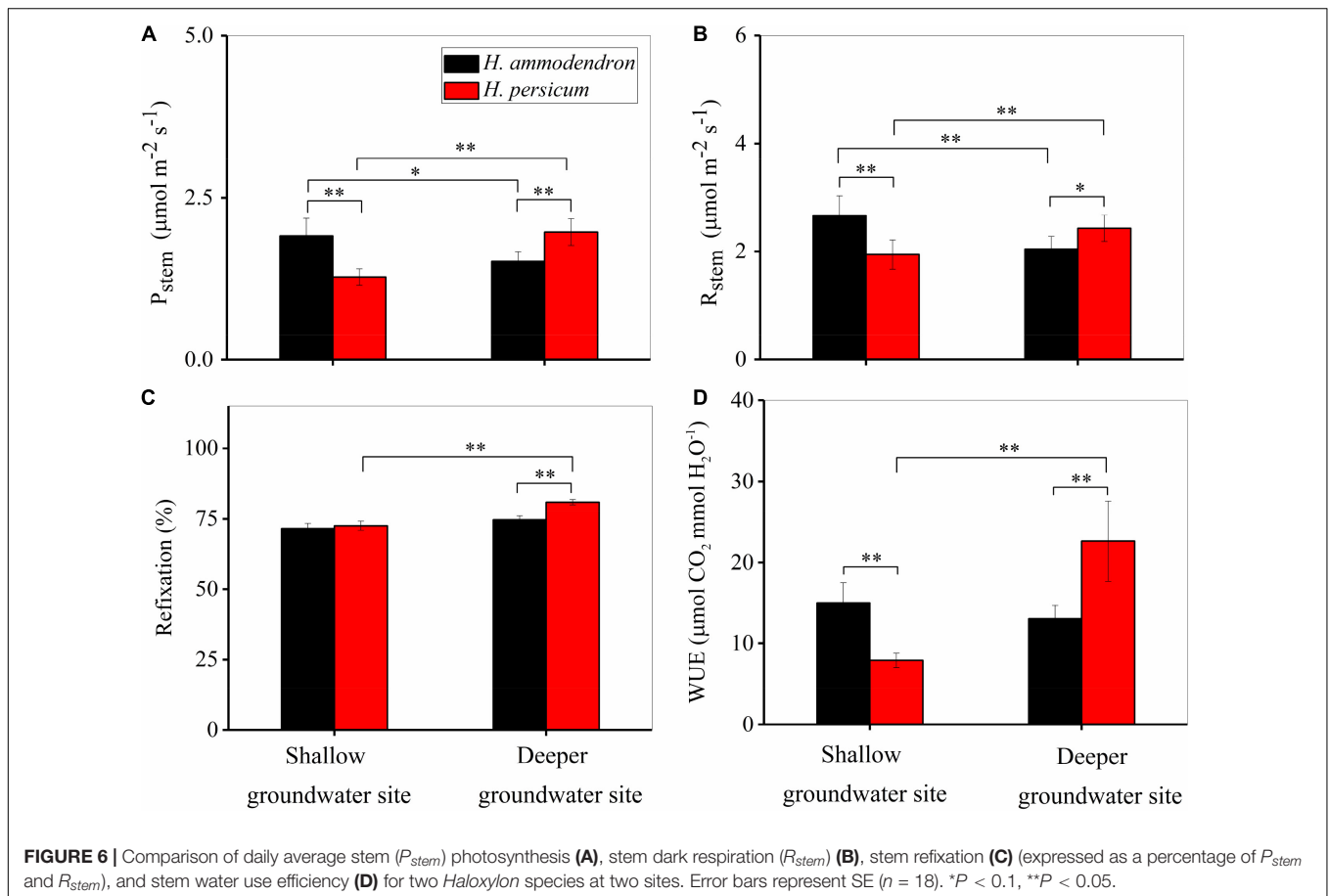
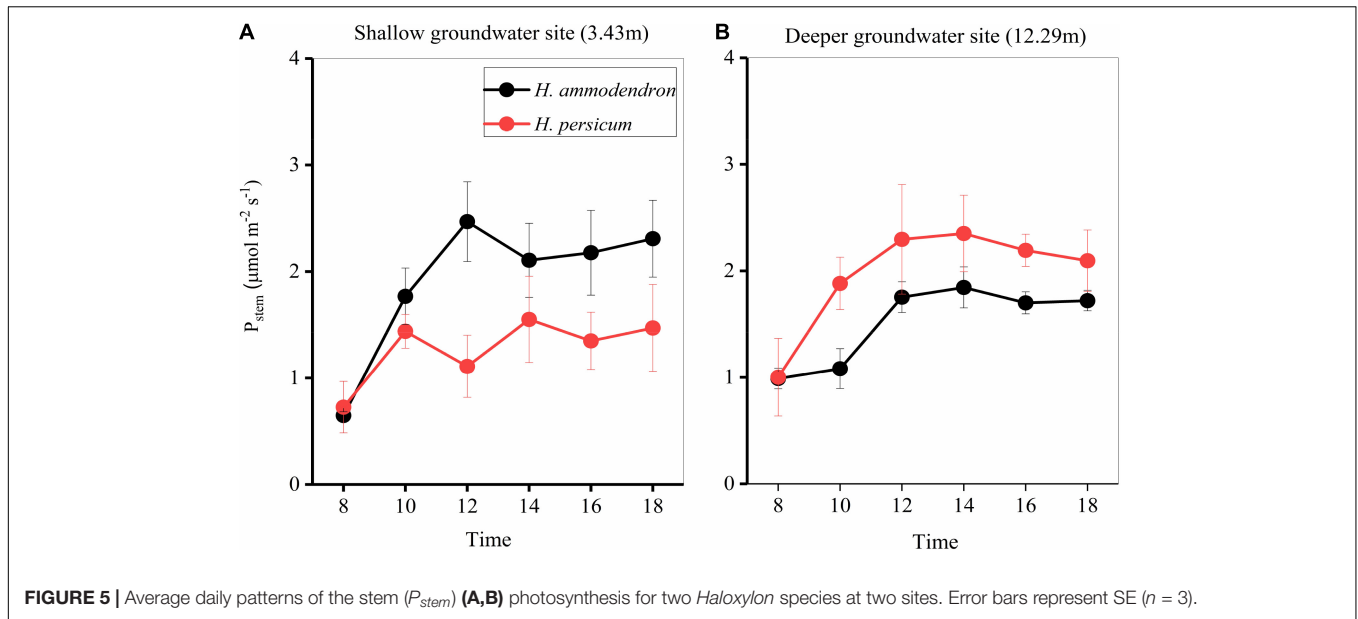
Diurnal Variations in Stem Recycling Photosynthesis and Water Use Efficiency

Throughout a diurnal time course, at a deeper groundwater site, the stem recycling photosynthetic rate of *H. persicum* was increased, with the maximum P_{stem} recorded being 1.84 vs. $2.35 \mu\text{mol m}^{-2} \text{s}^{-1}$ at shallow and deeper groundwater sites, respectively (Figures 5A,B). However, the opposite pattern was observed in *H. ammodendron*, with the maximum P_{stem} recorded being 2.47 vs. $1.55 \mu\text{mol m}^{-2} \text{s}^{-1}$ at each of the sites (Figures 5A,B).

On average, *H. ammodendron* had significantly lower values of P_{stem} (1.91 vs. $1.51 \mu\text{mol m}^{-2} \text{s}^{-1}$) and R_{stem} (2.67 vs. $2.04 \mu\text{mol m}^{-2} \text{s}^{-1}$) at the two sites (Figures 6A,B). The values of P_{stem} and R_{stem} of *H. persicum* increased up to 57% at the deeper groundwater site ($P < 0.05$) (Figures 6A,B). Furthermore, the amount of respired CO_2 refixed by stem photosynthesis ranged from 72 to 81% in the two *Haloxylon* species at two sites (Figure 6C). Deeper groundwater depth resulted in higher stem water use efficiency of *H. persicum*, with the value of 7.90 vs. $22.61 \mu\text{mol CO}_2 \text{ mmol H}_2\text{O}^{-1}$, but *H. ammodendron* remained unchanged 14.90 vs. $13.01 \mu\text{mol CO}_2 \text{ mmol H}_2\text{O}^{-1}$ (Figure 6D).

The Contribution of Stem Recycling Photosynthesis to Whole-Plant Carbon Assimilation

The ratio of stem area to leaf area (stem area/leaf area) of the two *Haloxylon* species at two sites was determined using destructive sampling (Figure 7A). The proportion of stem area in *H. persicum* was significantly higher than in *H. ammodendron*, but there was no difference within species between sites (Figure 7A). We estimated the contribution of



stem recycling photosynthesis to whole-plant carbon assimilation to be at least 10% for *H. ammodendron* and to be as high as 21% for *H. persicum* at a deeper groundwater site (Figure 7B).

DISCUSSION

Understanding the role of stem recycling photosynthesis in two *Haloxylon* species growing in habitats differing in groundwater

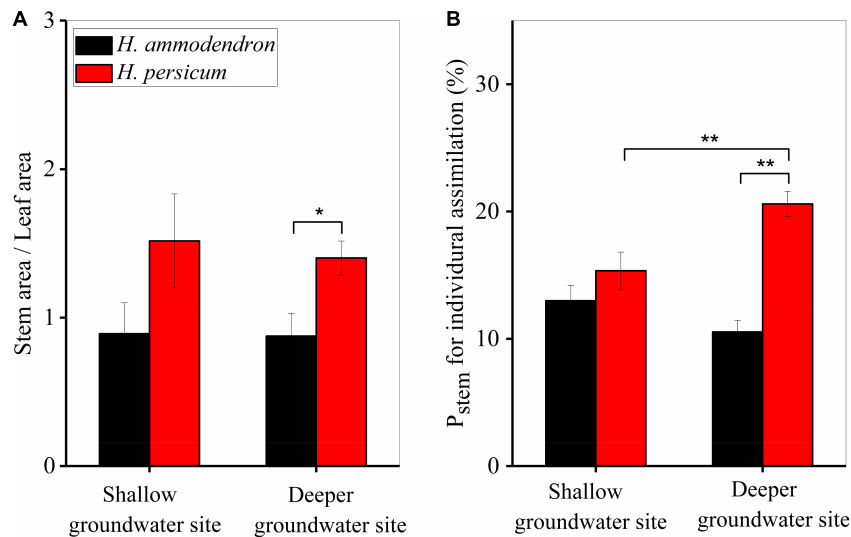


FIGURE 7 | Variations in stem area per leaf area (A) and the contribution of stem photosynthesis to whole-plant carbon assimilation (B) for two *Haloxylon* species growing at two sites. Error bars represent SE ($n = 3$). * $P < 0.1$, ** $P < 0.05$.

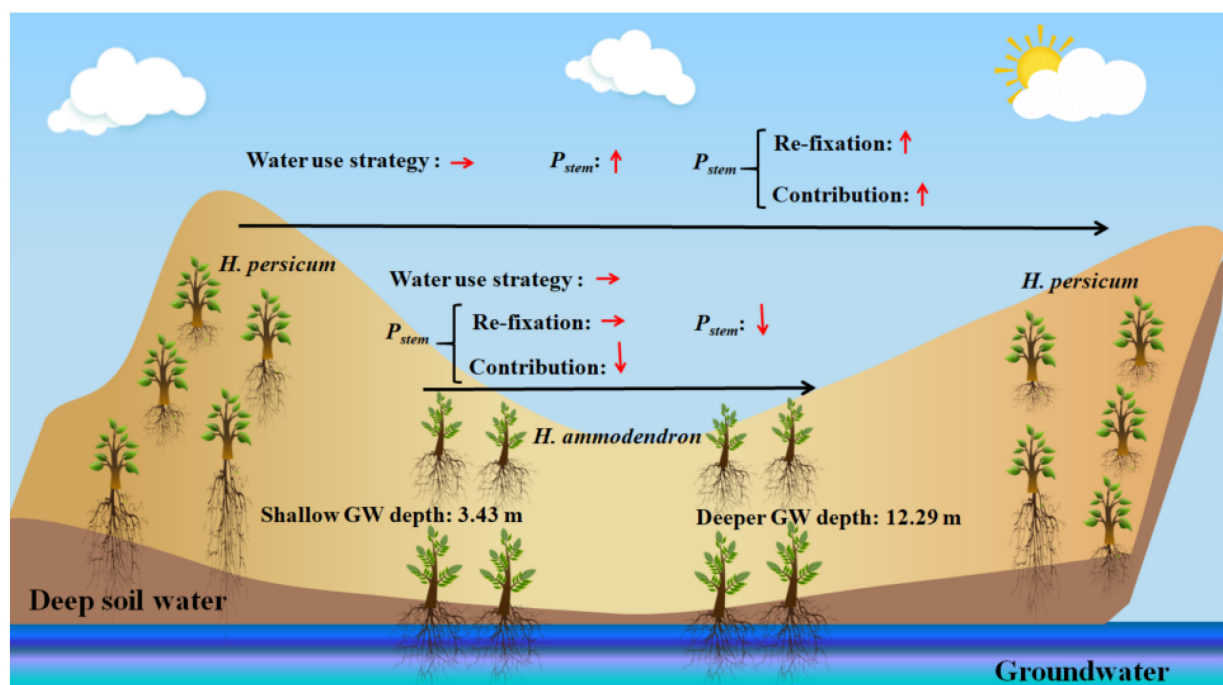


FIGURE 8 | Conceptual diagram illustrating the main results of this study. GW, groundwater.

depth is an important step toward improving predictions of carbon cycle dynamics under drought stress in arid and semiarid ecosystems (Ávila et al., 2014; Cernusak and Cheesman, 2015; Tarvainen et al., 2018; De Roo et al., 2020). In this study, we monitored the responses of stem recycling photosynthesis under an exceptionally wide range of groundwater depths from 3.43 to 12.29 m. We found that the deep soil water use strategy can induce the increase in stem recycling photosynthesis

capacity of *H. persicum* when exposed to a deeper groundwater depth. We also found that stem recycling photosynthesis of *H. ammodendron* was shaped by T_{air} and SWC, and stem recycling photosynthesis of *H. persicum* showed a positive correlation with P_{leaf} (Figure 8).

Plant water use strategy is particularly important when there is a change in plant community structure that might influence the accessibility of shallower vs. deeper soil water pools or

groundwater (Campos et al., 2013; Scott et al., 2014). In this study, the isotopic analysis showed that variation in groundwater depth did not affect the water use strategies of either *Haloxylon* species (Figure 3). *H. ammodendron* consistently used a greater fraction of groundwater as its main water source, while the largest contributor for *H. persicum* was the deeper soil water pool. Previous root-system investigation experiments characterized both of these species as being deep-rooted plants (Zou et al., 2010). The different water use strategies of *Haloxylon* species may be related to the microtopography where they are distributed. *H. ammodendron* mainly grows at the bottom of sand dunes, and its roots could penetrate up to 10 m below the surface (Xu et al., 2007). This deep rooting depth enables it to access groundwater (Lv et al., 2013; Dai et al., 2015; Wu et al., 2019). Unlike *H. ammodendron*, *H. persicum* usually grows on dune crests, placing it farther from the groundwater table. Excessive energy costs might prevent its roots from accessing groundwater (Tiemuerbieke et al., 2018). Therefore, *H. persicum* depends on deep soil water, which is derived from infiltration of precipitation and groundwater fluctuations (Figure 3).

Even at places where the groundwater was deeper, neither *Haloxylon* species changed its water use strategy, though photosynthesis of stems did respond to groundwater depth (Figures 4, 5). Stems had significantly lower light-saturated PPFD and maximum stem photosynthetic rates. The observed value of light-saturated stem photosynthesis corresponds to measurements reported for stems of most other woody species, which range from 200 to 400 $\mu\text{mol m}^{-2} \text{s}^{-1}$ (Wittmann and Pfan, 2008; Eyles et al., 2009). The maximum stem recycling photosynthetic rate was $1.58 \pm 0.3 \mu\text{mol m}^{-2} \text{s}^{-1}$, which is consistent with reports for other species [0.1–9 $\mu\text{mol m}^{-2} \text{s}^{-1}$, reviewed by Ávila et al. (2014)]. Surprisingly, deeper groundwater sites had a strong positive effect on stem recycling photosynthesis of *H. persicum*, but this did not occur on *H. ammodendron* (Figures 5–7). This could be attributed to the fact that the response of *H. ammodendron* to water changes mainly relies on morphological regulation to maintain the stability of physiological activities (Xu et al., 2007; Zou et al., 2010). The results partially support our initial hypothesis that stem photosynthesis would contribute more to the organ and whole-plant carbon balance of two species under deeper groundwater depths.

Stem recycling photosynthesis does not depend on the uptake of atmospheric CO_2 but can instead rely on internal dark respiration (Cernusak and Marshall, 2000). Our results also suggested that stem recycling photosynthesis refixes CO_2 released during stem dark respiration, resulting in 72–81% of respired CO_2 being refixed (Figure 6). The observed refixation value corresponds to observations reported for stems recycling photosynthesis of most other woody species, which suggest that this recycling mechanism can offset between 7 and 98% of stem dark respiration (Wittmann et al., 2006; Ávila et al., 2014; De Roo et al., 2020). Refixation has two advantages over leaf photosynthesis: there is very less associated water loss and refixing respired carbon increases carbon use efficiency, which increases stand-level productivity (Vandegheuchte et al., 2015). Stems always have higher water use efficiency (Cernusak and

Marshall, 2000); we found that two *Haloxylon* species' water use efficiency of stems was 3–5 times higher than that of the leaves (Supplementary Table 1). This may be due to the fact that bark lenticels are far less than leaf stomata. Additionally, stem recycling photosynthesis can be accomplished with stomata closed as it can refix internally respired CO_2 (Wittmann et al., 2006; Cernusak and Hutley, 2011).

Although stem recycling photosynthesis has been widely studied for its effects on tree carbon cycling (Nilsen, 1995; Pfan et al., 2002; Ávila et al., 2014; De Roo et al., 2020), it has surprisingly been neglected on its contribution to the whole-plant carbon assimilation. We estimated that stem recycling photosynthesis contributed 10–21% of the total whole-plant carbon assimilation for the two *Haloxylon* species (Figure 7). Previous studies have shown that stem photosynthesis accounted for 10–15% of whole-tree carbon input in *Populus tremula* during the summer (Kharouk et al., 1995; Pfan et al., 2002). In mature *Eucalyptus miniata* trees, 10% of branch diameter growth was fueled by stem photosynthesis (Cernusak and Hutley, 2011). Altogether, the results indicated that two *Haloxylon* species, especially *H. persicum*, exhibited higher stem recycling photosynthesis, which plays an important role in desert plant carbon balance (Cernusak and Marshall, 2000; Eyles et al., 2009; Liu et al., 2019).

CONCLUSION

Our study quantified the relative importance of changes in stem recycling photosynthetic capacity across different groundwater depths. Different water use strategies employed by the two *Haloxylon* species drove *H. persicum*, but not *H. ammodendron*, to increase its photosynthetic capacity when groundwater was deeper. Furthermore, deeper groundwater also resulted in a higher contribution of stem recycling photosynthesis to whole-plant carbon assimilation and stem water use efficiency, indicating that water use and carbon gain become more efficient under drought conditions. Ecophysiological studies on stem photosynthesis of woody plants are still very much under-explored. Future studies on different desert woody plants should also include characterizing how stem photosynthesis may impact the resistance and resilience of those species to drought. Accurate quantification of the capacity for refixation of respired carbon by stem photosynthesis and its contribution to the whole plant may reveal that the contribution of stem photosynthesis to the total carbon budget of desert ecosystems is significant.

DATA AVAILABILITY STATEMENT

The raw data supporting the conclusions of this article will be made available by the authors, without undue reservation.

AUTHOR CONTRIBUTIONS

RL, YW, CL, and YL planned and designed the research. RL, XF, and JM collected the data. RL and XF analyzed the data. RL,

XF, and CL interpreted the results and wrote the manuscript. All authors contributed critically to the drafts.

FUNDING

This financial support was provided by the Western Light Program of the Chinese Academy of Sciences (Nos. 2020-XBQNXZ-013 and 2021-XBQNXZ-002), the National Natural Science Foundation of China (Nos. U1903301, 41771121, 41730638, and 31931731), and the Shanghai Cooperation and the Organization Science and Technology Partnership (No. 2020E01046).

REFERENCES

- Ávila, E., Herrera, A., and Tezara, W. (2014). Contribution of stem CO₂ fixation to whole-plant carbon balance in nonsucculent species. *Photosynthetica* 52, 3–15. doi: 10.1007/s11099-014-0004-2
- Ávila, E., and Tezara, W. (2018). Water-use efficiency is higher in green stems than in leaves of a tropical tree species. *Trees* 32, 1547–1558. doi: 10.1007/s00468-018-1732-x
- Bloemen, J., McGuire, M. A., Aubrey, D. P., Teskey, R. O., and Steppe, K. (2013a). Internal recycling of respired CO₂ may be important for plant functioning under changing climate regimes. *Plant Sign. Behav.* 8:e27530. doi: 10.4161/psb.27530
- Bloemen, J., McGuire, M. A., Aubrey, D. P., Teskey, R. O., and Steppe, K. (2013b). Transport of root-respired CO₂ via the transpiration stream affects aboveground carbon assimilation and CO₂ efflux in trees. *New Phytol.* 197, 555–565. doi: 10.1111/j.1469-8137.2012.04366.x
- Bloemen, J., Vergeynst, L. L., Overlaet-Michiels, L., and Steppe, K. (2016). How important is woody tissue photosynthesis in poplar during drought stress? *Trees* 30, 63–72.
- Campos, G. E. P., Moran, M. S., Huete, A., Zhang, Y. G., Bresloff, C., Huxman, T. E., et al. (2013). Ecosystem resilience despite large-scale altered hydroclimatic conditions. *Nature* 494, 349–352.
- Cernusak, L. A., and Cheesman, A. W. (2015). The benefits of recycling: How photosynthetic bark can increase drought tolerance. *New Phytol.* 208, 995–997.
- Cernusak, L. A., and Hutley, L. B. (2011). Stable isotopes reveal the contribution of cortical photosynthesis to growth in branches of *Eucalyptus miniata*. *Plant Physiol.* 155, 515–523.
- Cernusak, L. A., and Marshall, J. D. (2000). Photosynthetic refixation in branches of Western White Pine. *Funct. Ecol.* 14, 300–311.
- Chang, T. G., Song, Q. F., Zhao, H. L., Chang, S., Xin, C., Qu, M., et al. (2020). An in situ approach to characterizing photosynthetic gas exchange of rice panicle. *Plant Methods* 16:92.
- Dai, Y., Zheng, X. J., Tang, L. S., and Li, Y. (2015). Stable oxygen isotopes reveal distinct water use patterns of two *Haloxylon* species in the Gurbantunggut Desert. *Plant Soil* 389, 73–87.
- De Roo, L., Salomon, R. L., and Steppe, K. (2020). Woody tissue photosynthesis reduces stem CO₂ efflux by half and remains unaffected by drought stress in young *Populus tremula* trees. *Plant Cell Environ.* 43, 981–991.
- Eyles, A., Pinkard, E. A., O'Grady, A. P., Worledge, D., and Warren, C. R. (2009). Role of cortical photosynthesis following defoliation in *Eucalyptus globulus*. *Plant Cell Environ.* 32, 1004–1014.
- Henry, R. J., Furtado, A., and Rangan, P. (2020). Pathways of Photosynthesis in Non-leaf Tissues. *Biology* 9:438. doi: 10.3390/biology9120438
- Huang, G., and Li, Y. (2015). Phenological transition dictates the seasonal dynamics of ecosystem carbon exchange in a desert steppe. *J. Veg. Sci.* 26, 337–347.
- Hubeau, M., Mincke, J., Vanhove, C., Courtyrn, J., Vandenbergh, S., and Steppe, K. (2019). Plant-PET to investigate phloem vulnerability to drought in *Populus tremula* under changing climate regimes. *Tree Physiol.* 39, 211–221. doi: 10.1093/treephys/tpy131
- IPCC (2019). *Climate Change and Land: An IPCC special report on climate change, desertification, land degradation, sustainable land management, food security, and greenhouse gas fluxes in terrestrial ecosystems*. Geneva: IPCC
- Kharouk, V. L., Middleton, E. M., Spencer, S. L., Rock, B. N., and Williams, D. L. (1995). Aspen bark photosynthesis and its significance to remote sensing and carbon budget estimates in the boreal ecosystem. *Water Air Soil Pollut.* 82, 483–497.
- Liu, J., Gu, L., Yu, Y., Huang, P., Wu, Z., Zhang, Q., et al. (2019). Cortical photosynthesis drives bark water uptake to refill embolized vessels in dehydrated branches of *Salix matsudana*. *Plant Cell Environ.* 42, 2584–2596. doi: 10.1111/pce.13578
- Liu, R., Cieraad, E., Li, Y., and Ma, J. (2016). Precipitation pattern determines the inter-annual variation of herbaceous layer and carbon fluxes in a phreatophyte-dominated desert ecosystem. *Ecosystems* 19, 601–614.
- Lv, J. L., Zhang, X. M., Lv, C. Y., and Liu, G. J. (2013). A preliminary study on the water sources of *Haloxylon ammodendron* at the southern edge desert of Junggar Basin, China. *J. Desert Res.* 33, 110–117.
- Nilsen, E. T. (1995). "Stem photosynthesis: extent, patterns, and role in plant carbon economy," in *Plant Stems: Physiology and Functional Morphology*, ed. B. Gartner (San Diego: Academic Press), 223–240. doi: 10.1016/b978-012276460-8/50012-6
- Pfanz, H., Aschan, G., Langenfeld-Heyser, R., Wittmann, C., and Loose, M. (2002). Ecology and ecophysiology of tree stems: cortical and wood photosynthesis. *Naturwissenschaften* 89, 147–162. doi: 10.1007/s00114-002-0309-z
- Phillips, D. L., and Gregg, J. W. (2003). Source partitioning using stable isotopes: coping with too many sources. *Oecologia* 136, 261–269. doi: 10.1007/s00442-003-1218-3
- R Core Team (2020). *R: A Language and Environment for Statistical Computing*. Vienna, Austria: R Foundation for Statistical Computing. Available online at: <https://www.R-project.org/>
- Saveyn, A., Steppe, K., Ubierna, N., and Dawson, T. E. (2010). Woody tissue photosynthesis and its contribution to trunk growth and bud development in young plants. *Plant Cell Environ.* 33, 1949–1958. doi: 10.1111/j.1365-3040.2010.02197.x
- Schmitz, N., Egerton, J. J. G., Lovelock, C. E., and Ball, M. C. (2012). Lightdependent maintenance of hydraulic function in mangrove branches: do xylary chloroplasts play a role in embolism repair? *New Phytol.* 195, 40–46.
- Scott, R. L., Huxman, T. E., Barron-Gafford, G. A., Jenerette, G. D., Young, J. M., and Hamerlynck, E. P. (2014). When vegetation change alters ecosystem water availability. *Glob. Chang. Biol.* 20, 2198–2210. doi: 10.1111/gcb.12511
- Sevanto, S. (2014). Phloem transport and drought. *J. Exp. Bot.* 65, 1751–1759.
- Smith, S. D., Monson, R. K., and Anderson, L. E. (1996). "Physiological Ecology of North American Desert Plants," in *Adaptations of Desert Organisms*, ed. J. L. Cloudsley-Thompson (New York, NY: Springer).
- Steppe, K., Sterck, F., and Deslauriers, A. (2015). Diel growth dynamics in tree stems: Linking anatomy and ecophysiology. *Trends Plant Sci.* 20, 1–9. doi: 10.1016/j.tplants.2015.03.015

ACKNOWLEDGMENTS

We thank all staff of the Fukang National Station of Observation and Research for Desert Ecosystem for their excellent field and laboratory assistance.

SUPPLEMENTARY MATERIAL

The Supplementary Material for this article can be found online at: <https://www.frontiersin.org/articles/10.3389/fpls.2022.804786/full#supplementary-material>

- Tarvainen, L., Wallin, G., Lim, H., Linder, S., Oren, R., Löfvenius, M. O., et al. (2018). Photosynthetic refixation varies along the stem and reduces CO₂ efflux in mature boreal *Pinus sylvestris* trees. *Tree Physiol.* 38, 558–569. doi: 10.1093/treephys/tpx130
- Tiemuerbieke, B., Min, X. J., Zang, Y. X., Xing, P., Ma, J. Y., and Sun, W. (2018). Water use patterns of co-occurring C3 and C4 shrubs in the Gurbantunggut desert in northwestern China. *Sci. Total Environ.* 634:341. doi: 10.1016/j.scitotenv.2018.03.307
- Vandegheuchte, M. W., Bloemen, J., Vergeynst, L. L., and Steppe, K. (2015). Woody tissue photosynthesis in trees: Salve on the wounds of drought? *New Phytol.* 208, 998–1002. doi: 10.1111/nph.13599
- White, A. C., Rogers, A., Rees, M., and Osborne, C. P. (2016). How can we make plants grow faster? A source–sink perspective on growth rate. *J. Exp. Bot.* 67, 31–45. doi: 10.1093/jxb/erv447
- Wittmann, C., and Pfanz, H. (2008). Antitranspirant functions of stem periderms and their influence on corticular photosynthesis under drought stress. *Trees* 22, 187–196.
- Wittmann, C., and Pfanz, H. (2018). More than just CO₂-recycling: Corticular photosynthesis as a mechanism to reduce the risk of an energy crisis induced by low oxygen. *New Phytol.* 219, 551–564. doi: 10.1111/nph.15198
- Wittmann, C., Pfanz, H., Loreto, F., Centritto, M., Pietrini, F., and Alessio, G. (2006). Stem CO₂ release under illumination, corticular photosynthesis, photorespiration or inhibition of mitochondrial respiration? *Plant Cell Environ.* 29, 1149–1158.
- Wu, X., Zheng, X. J., Li, Y., and Xu, G. Q. (2019). Varying responses of two *Haloxylon* species to extreme drought and groundwater depth. *Environ. Exp. Bot.* 158, 63–72.
- Xu, H., Li, Y., Xu, G. Q., and Zou, T. (2007). Ecophysiological response and morphological adjustment of two Central Asian desert shrubs towards variation in summer precipitation. *Plant Cell Environ.* 30, 399–409. doi: 10.1111/j.1365-3040.2006.001626.x
- Ye, Z. P., and Yu, Q. (2008). A coupled model of stomatal conductance and photosynthesis for winter wheat. *Photosynthetica* 46, 637–640. doi: 10.1007/s11099-008-0110-0
- Zhou, H. F., Zheng, X. J., Zhou, B. J., Dai, Q., and Li, Y. (2012). Sublimation over seasonal snowpack at the southeastern edge of a desert in central Eurasia. *Hydrol. Process.* 26, 3911–3920.
- Zou, T., Li, Y., Xu, H., and Xu, G. Q. (2010). Responses to precipitation treatment for *Haloxylon ammodendron* growing on contrasting textured soils. *Ecol. Res.* 25, 185–194. doi: 10.1007/s11284-009-0642-1
- Conflict of Interest:** The authors declare that the research was conducted in the absence of any commercial or financial relationships that could be construed as a potential conflict of interest.
- Publisher's Note:** All claims expressed in this article are solely those of the authors and do not necessarily represent those of their affiliated organizations, or those of the publisher, the editors and the reviewers. Any product that may be evaluated in this article, or claim that may be made by its manufacturer, is not guaranteed or endorsed by the publisher.
- Copyright © 2022 Liu, Feng, Li, Ma, Wang and Li. This is an open-access article distributed under the terms of the Creative Commons Attribution License (CC BY). The use, distribution or reproduction in other forums is permitted, provided the original author(s) and the copyright owner(s) are credited and that the original publication in this journal is cited, in accordance with accepted academic practice. No use, distribution or reproduction is permitted which does not comply with these terms.