



OPEN ACCESS

EDITED BY
Minmin Li,
Institute of Food Science and
Technology (CAAS), China

REVIEWED BY
Zhiqiang Kong,
Chinese Academy of Agricultural
Sciences (CAAS), China
Ran Wang,
Beijing Academy of Agriculture and
Forestry Sciences, China

*CORRESPONDENCE
Tzu-Pi Huang
tphuang@nchu.edu.tw
Su-Chiung Fang
scfang@gate.sinica.edu.tw

SPECIALTY SECTION

This article was submitted to
Plant Metabolism and Chemodiversity,
a section of the journal
Frontiers in Plant Science

RECEIVED 27 September 2022

ACCEPTED 10 November 2022

PUBLISHED 29 November 2022

CITATION

Ho B-L, Chen J-C, Huang T-P and
Fang S-C (2022) Protocorm-like-
body extract of *Phalaenopsis*
aphrodite combats watermelon
fruit blotch disease.
Front. Plant Sci. 13:1054586.
doi: 10.3389/fpls.2022.1054586

COPYRIGHT

© 2022 Ho, Chen, Huang and Fang.
This is an open-access article
distributed under the terms of the
[Creative Commons Attribution License
\(CC BY\)](https://creativecommons.org/licenses/by/4.0/). The use, distribution or
reproduction in other forums is
permitted, provided the original
author(s) and the copyright owner(s)
are credited and that the original
publication in this journal is cited, in
accordance with accepted academic
practice. No use, distribution or
reproduction is permitted which does
not comply with these terms.

Protocorm-like-body extract of *Phalaenopsis aphrodite* combats watermelon fruit blotch disease

Bo-Lin Ho^{1,2}, Jhun-Chen Chen^{1,2}, Tzu-Pi Huang^{3,4,5*}
and Su-Chiung Fang^{1,2,6*}

¹Biotechnology Center in Southern Taiwan, Academia Sinica, Tainan, Taiwan, ²Agricultural Biotechnology Research Center, Academia Sinica, Taipei, Taiwan, ³Department of Plant Pathology, National Chung Hsing University, Taichung, Taiwan, ⁴Innovation and Development Center of Sustainable Agriculture, National Chung Hsing University, Taichung, Taiwan, ⁵Master's and PhD Degree Program of Plant Health Care, Academy of Circular Economy, National Chung Hsing University, Nantou, Taiwan, ⁶Biotechnology Center, National Chung Hsing University, Taichung, Taiwan

Bacterial fruit blotch, caused by the seedborne gram-negative bacterium *Acidovorax citrulli*, is one of the most destructive bacterial diseases of cucurbits (gourds) worldwide. Despite its prevalence, effective and reliable means to control bacterial fruit blotch remain limited. Transcriptomic analyses of tissue culture-based regeneration processes have revealed that organogenesis-associated cellular reprogramming is often associated with upregulation of stress- and defense-responsive genes. Yet, there is limited evidence supporting the notion that the reprogrammed cellular metabolism of the regenerated tissues confers *bona fide* antimicrobial activity. Here, we explored the anti-bacterial activity of protocorm-like-bodies (PLBs) of *Phalaenopsis aphrodite*. Encouragingly, we found that the PLB extract was potent in slowing growth of *A. citrulli*, reducing the number of bacteria attached to watermelon seeds, and alleviating disease symptoms of watermelon seedlings caused by *A. citrulli*. Because the anti-bacterial activity can be fractionated chemically, we predict that reprogrammed cellular activity during the PLB regeneration process produces metabolites with antibacterial activity. In conclusion, our data demonstrated the antibacterial activity in developing PLBs and revealed the potential of using orchid PLBs to discover chemicals to control bacterial fruit blotch disease.

KEYWORDS

Acidovorax citrulli, bacterial fruit blotch (BFB), protocorm-like-body, *Phalaenopsis* orchids, antibacterial activity

Introduction

Bacterial fruit blotch (BFB) is a serious seedborne pathogen for watermelon and melon worldwide and its outbreaks have caused severe fruit loss in the Americas, Asia, Europe, the Middle and Far East, and Australia (Burdman et al., 2005; Bahar and Burdman, 2010; Burdman and Walcott, 2012). In Taiwan, BFB disease was first reported in 1992-1993 (Tzeng et al., 2010). The recurrence of BFB in 1994 caused more than 60% loss of the watermelon crop nationwide (Tang, 1997; Cheng et al., 2000; Cheng, 2009; Tzeng et al., 2010). The primary source of inoculum is often contaminated seeds (Assouline et al., 1997). Because of the destructive nature of BFB disease, evaluation of pathogen contamination in seed lots prior to their sale and distribution has become a critical practice for seed companies. Based on the National Seed Health System USDA standard (<http://www.seedhealth.org/cb1-1>), one infected seedling in 30,000 tested seeds can be sufficient to lead to rejection of the entire seed lot. However, seed disinfestations and chemical control only have limited efficacy in controlling BFB (Burdman and Walcott, 2012). Even though seedling grow-out assay is widely used to evaluate seed health, infected seedlings may or may not show disease symptoms. It has been reported that the amount of bacteria present on a seed, environmental conditions, virulence levels of the strains, and the susceptibility of host plants as a whole affect BFB outbreaks (Schaad et al., 2003; Bahar and Burdman, 2010). If infected seedlings are not detected, they might be transplanted into the field and become the primary source of inoculum for field outbreaks. To date, no BFB disease resistant plants have been developed and BFB management remains a major challenge to global watermelon and melon agriculture (Bahar and Burdman, 2010; Islam et al., 2020). Hence, an innovative plan for a BFB management program is a pressing need.

The Orchidaceae represents one of the largest angiosperm families comprising more than 25,000 species that grow in wide range of habitats ranging from rainforest and mountain, to swamp and arctic tundra (Stokstad, 2015). Considering the rich diversity of the orchid species, it is likely that orchids provide a substantial resource of novel compounds for potential application. In fact, orchids have been utilized by humans for thousand years. For example, vanilla orchid *Vanilla planifolia*, probably endemic to tropical forests in Eastern Mexico, is a major source of vanilla (Bory et al., 2008). Additionally, orchids such as *Gastrodia elata*, *Bletilla striata*, and *Dendrobium* species have been used for medicinal purposes in China and other Asian countries for thousands of years (Bulpitt et al., 2007). Despite this background, only a few phytochemicals have been characterized from orchids and the potential of orchid derived-phytochemicals has not been fully explored.

Protocorm-like bodies (PLBs) morphologically resemble the orchid germinated structures, protocorms, but are derived from

somatic explants *via a de novo* regeneration pathway (Jones and Tisserat, 1990; Chugh et al., 2009; Fang et al., 2022). Because each PLB has the ability to regenerate into an individual plant, PLB-based micropropagation is often used to produce clonal plantlets in the orchid industry (Yam and Arditti, 2009). Our previous comparative transcriptomic studies to dissect the developmental origin of PLB supported that PLB and protocorm share similar molecular signatures and unexpectedly revealed that many genes involved in plant defense responses are specifically enriched in the developing PLB (Fang et al., 2016; Fang, 2021; Fang et al., 2022). Considering the potential functions of PLB-enriched defense related genes, we explored the antimicrobial activity of PLB extract and tested its effects on BFB of watermelon. Our results demonstrate the antibacterial activity of PLB extract and suggest the potential of using the orchid PLBs for developing a reagent to control BFB.

Materials and methods

Pathogen

Acidovorax citrulli Aac153 (*A. citrulli* Aac153), isolated by the Laboratory of Phytopathogenic Bacteria, Department of Plant Pathology, National Chung Hsing University, Taiwan was a kind gift from Dr. Yi-Hsien Lin from National Pingtung University of Science and Technology. *A. citrulli* Aac153 has been shown to cause watermelon fruit blotch disease (Chang et al., 2019). *A. citrulli* Aac153 was stored at -75°C in tryptic soy broth (TSB) supplemented with 15% glycerol (v/v) and allowed to grow on selective medium AacG containing 0.5g/l KH₂PO₄, 2g/l Na₂HPO₄·12H₂O, 2 g/l (NH₄)₂SO₄, 5 g/l L-glutamic acid, 12.5 mg/l bromothymol blue, 15g/l agar, 20 mg/l ampicillin, 25 ppm/l cycloheximide as described previously (Chen, 2014). The single colony was used as inoculum for the primary culture. For subculture, single colony of primary culture was used to inoculate TSB and allowed to grow overnight at 28°C. The overnight culture was then grown on a selective AacG agar plate and the single colony was used as inoculum for the secondary culture. Only the primary and secondary cultures were used for inoculation in all the experiments. This strain produces reproducible, severe symptoms on the commercialized watermelon cultivar China Baby (Chang et al., 2019).

PLB extraction

PLB tissues were homogenized by pestle and mortar in the presence of liquid nitrogen. One gram of pulverized PLB tissues was sonicated in the presence of 5 ml of ethyl acetate (EtOAc) for 30 mins (Branson 8510 DTH). The EtOAc-based PLB extract

was incubated at 55°C for 10 min. Large tissue debris was removed by centrifugation at 3220 x g for 10 min. Supernatant was transferred to a new tube and concentrated by a rotary evaporator (EYELA, USA). The pellet was resuspended in 1 ml 100% MeOH. The PLB extract was then filtered by a 0.2 µm filter (13 mm Acrodisc Syringe filter, Pall) followed by concentration using a CentriVap Vacuum Concentrator (Labconco). The concentrated PLB-extract was flash frozen and stored at -80°C.

Frozen PLB extract was resuspended in 2 ml 30% MeOH. The 1 cc 50 mg Sep-PaK C18 cartridge (Waters) was first equilibrated with 1 ml of 100% MeOH followed by 1 ml of H₂O once and then 1 ml of 30% MeOH once. For fractionation, solid phase extraction (SPE) was carried out by applying 1 ml PLB-based extract onto the equilibrated Sep-PaK C18 cartridge using a step gradient of MeOH-water mixture at a concentration of 30%, 45%, 60%, 80%, and 100% MeOH PLB and the eluents were collected individually. Methanol was allowed to evaporate by CentriVap Vacuum Concentrator (Labconco) and the fractionated PLB extract from 1 g tissues was pooled and resuspended in 100 µl 100% MeOH for seed infestation and pathogenicity assays as described below.

Bacterial growth inhibition assay

Frozen PLB extract from 1 g of PLB tissues (see above) was resuspended directly in 1 ml 100% MeOH. The overnight *A. citrulli* Aac153 culture was pelleted by centrifugation and washed once with 5 ml TSB medium, and diluted to OD₆₀₀ = ~0.05 with TSB medium. The diluted culture was mixed with crude PLB extract (933 µl bacterial culture + 67 µl PLB extract) and aliquoted into 6 technical replicates (100 µl each) to a 96-well microtiter plate and

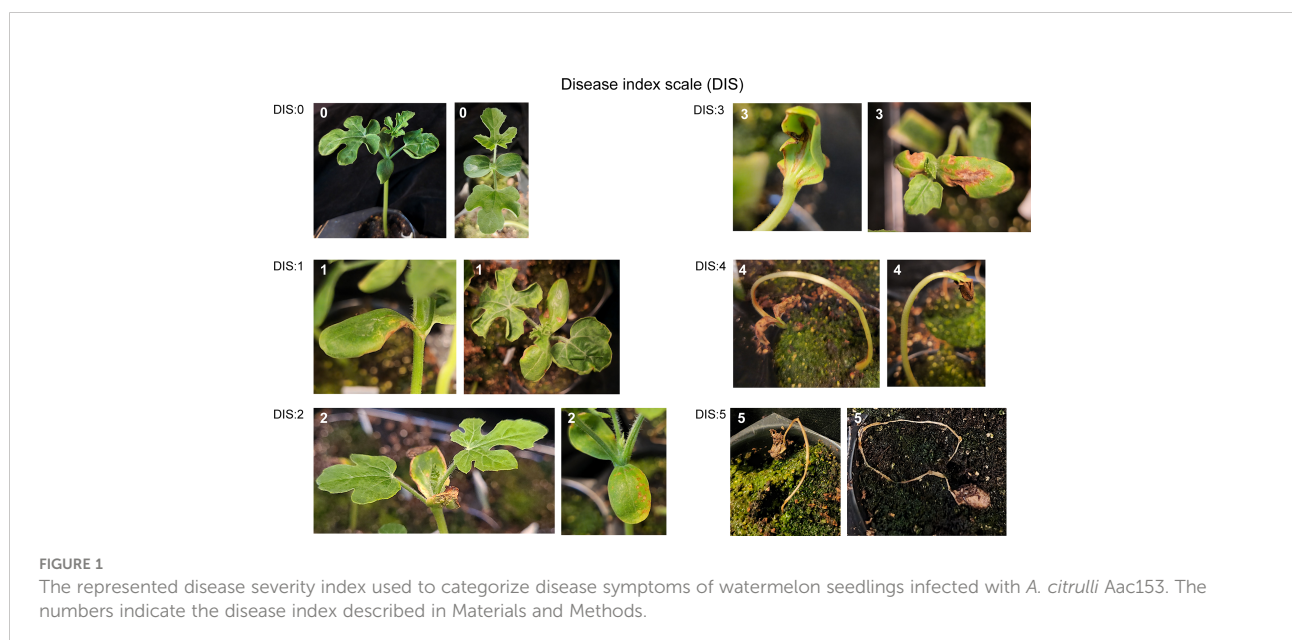
allowed to incubate at 28°C. The OD₆₀₀ was recorded at 0, 15, 19 hours after incubation. For each biological replicate, the absorbance measurements of OD₆₀₀ were recorded in three technical replicates. This experiment was repeated three times.

Disease index scale

Disease symptoms of seedlings at 12 days after transplantation (DAT) were recorded. Normally, 12 DAT watermelon seedlings have two expanded true leaves. Disease index was rated as follows (Figure 1): 0, no symptoms; 1, slight (< 20%) water-soaking or necrotic spots on cotyledons or hypocotyls; 2, increased water-soaking or necrotic spots (>20%) on cotyledons or hypocotyls; 3, expanded water-soaking and necrosis (>50%) on cotyledons or hypocotyls, true leaves often failed to emerge from infected seedlings, for seedlings with emerging true leaves, leaves failed to expand and were often distorted; 4, bent seedlings with necrotic cotyledons and hypocotyls, no true leaves were observed; 5, falling-over seedlings with complete necrotic cotyledons and hypocotyls. Disease severity was calculated as DS (%) = [sum (class frequency × score of rating class)]/[total number of plants × (maximal disease index)] × 100.

Seed infestation and pathogenicity assays

Watermelon seeds (China Baby) were purchased from Known-You Seed Company (Taiwan). For seed sterilization, seeds were imbibed in distilled water supplemented with 0.1%



Triton X100 and gently shaken for 30 min. Imbibed seeds were sterilized by incubating with 75% ethanol for 5 min followed by washing with sterilized water 5 times. Seeds were allowed to dry in a laminar hood overnight.

For bacterial culture preparation, *A. citrulli* Aac153 culture that grew in 4 ml TSB overnight was pelleted by centrifugation at 3220 x g at 25°C for 10 min, washed once with 5 ml 0.5% carboxymethyl cellulose (CMC), resuspended in 0.5% CMC, and adjusted to OD₆₀₀ to ~0.3. This preparation was used as the bacterial stock for seed infestation and seedling pathogenicity assays.

For seed infestation assay, five sterilized seeds were incubated with *A. citrulli* Aac153 culture in the presence (933 µl diluted bacterial culture + 67 µl fractionated PLB extract) or absence (933 µl diluted bacterial culture + 67 µl methanol) of PLB extract with gentle shaking (200 rpm) at 28°C for 2 h. The infested seeds were allowed to dry in a laminar flow hood overnight. The infected seeds were then resuspended in 1 ml AacG selective medium, incubated at 4°C for 30 min followed by incubation at 37°C for 1 h as described previously (Chen, 2014). Bacteria were concentrated by centrifugation at 15871 x g at 4°C for 10 min. The supernatant was carefully removed and the bacterial pellet was resuspended in 1 ml distilled water. The bacterial suspension was diluted 10 or 100 times by distilled water, plated on AacG selective plates, and allowed to grow at 28°C for three days. For each biological repeat, measurement of colony forming units was performed in three technical replicates. This experiment was repeated three times. A two-tailed Student's t-test was applied. *, 0.05 > *p* > 0.01; **, *p* < 0.01. Only the treatments showing statistically significant reduction of bacteria were marked.

For seedling pathogenicity assay, the diluted *A. citrulli* Aac153 culture (OD₆₀₀ to ~0.3) was further diluted 500 times with 0.5% CMC immediately before infection experiment. Eight sterilized seeds were incubated with 1 ml of diluted *A. citrulli* Aac153 culture in the presence (933 µl diluted *A. citrulli* Aac153 + 67 µl fractionated PLB extract, treatment) or absence (933 µl diluted *A. citrulli* Aac153 + 67 µl MeOH, control) of PLB extract at 28°C with gentle shaking (200 rpm) for 24 h. The infested seeds were allowed to germinate in a humidity chamber at 32°C in the dark for 72 h. The germinated seedlings were then transferred to soil and allowed to grow in a growth chamber with a 16-h:8-h light:dark cycle under illumination of ~300 µmol photons m⁻²s⁻¹ at 32°C. Plastic wrap was used to cover soil pots to maintain humidity and removed 5 days after transplantation. Disease symptoms were rated and recorded based on disease index scale (Figure 1) as described previously. The experiment was conducted three times. A two-tailed Student's t-test was applied. **, 0.01 > *p* > 0.001; ***, *p* < 0.001.

RNA extraction and RT-qPCR

RNA was extracted as described previously (Fang et al., 2016). Three micrograms of DNA-free RNA were reverse

transcribed in the presence of a mixture of oligo(dT) and random primers in a 9:1 ratio using the GoScript Reverse Transcription System (Promega) based on the manufacturer's instructions. Ten microliters of reverse transcription-PCR reaction contained 2.5 µL of 1:20 diluted cDNA, 0.2 µM of primers, and 5 µL of 2x KAPA SYBR FAST master mix (KAPA Biosystems). The amplification program was as follows: 95°C for 1 min, and 40 cycles at 95°C for 5 s and 58°C to 60°C for 20 s. PCR was performed in triplicate. Data are from technical triplicates and the error bars are presented as standard error of the mean. The RNA samples used for RT-qPCR analysis were independent from those for RNA-seq analyses. Primer pairs and the specified annealing temperature used for quantitative PCR are listed in Supplementary Table 1. *UBIQUITIN* was used as an internal control (Lin et al., 2014). The nomenclature of chalcone synthases was based on the previous study (Kuo et al., 2019). List of gene IDs used in this study and their corresponding IDs in the *P. aphrodite* databases are listed in Supplementary Table 2.

Statistical analysis

All experiments were performed three times or as otherwise mentioned in the figure legends. The data are presented as means and standard deviations obtained from at least three replicates of a single experiment. The significant difference between the treatments was analyzed by running a Student's t-test in IBM SPSS v.20.

Results

Plant defense-related genes are specifically upregulated in PLBs

Our previous RNA-seq study investigating the developmental origin of PLBs revealed that Gene Ontology (GO) terms such as oxidation-reduction process, terpene synthase activity, and stress responses are overrepresented in developing PLBs (Fang et al., 2016). The biochemical and biological properties of these GO terms are generally associated with plant defense responses (Field et al., 2006; Almagro et al., 2009; Ton et al., 2009; Gonzalez et al., 2010; Denance et al., 2013; Yang et al., 2013; Savatin et al., 2014). Among them, Phalaenopsis chalcone synthase (*CHS*) and flavonoid 3' hydroxylase (*F3' H*) genes, *PaCHS4*, *PaCHS5*, and *PaF3' H1*, were preferentially upregulated in developing PLBs (Table 1). Chalcone synthase and flavonoid 3' hydroxylase act at the initial steps to produce flavonoid- and isoflavonoid-type phytoalexins (Bak et al., 2011; Dao et al., 2011; Ahuja et al., 2012) that are part of plant defense responses (Ahuja et al., 2012). A

TABLE 1 Plant defense-related genes are enriched in developing PLBs as shown by RNA-seq analysis.

Transcript ID	Annotation	FPKM values										
		30/40 DAP	50/60 DAP	70/80 DAP	90/100/120 DAP	140/160 DAP	180/200 DAP	PLB	Protocorm	Young leaves	Stalk buds	Floral stalks
orchid.id124284.tr400924	PaCHS4	1.7	0.6	0.2	0.4	2.0	2.3	185.9	10.7	1.4	0.8	0.9
orchid.id121282.tr400924	PaCHS5	0.6	0.4	0.1	0.3	2.3	2.2	186.2	15.1	1.3	0.5	0.6
orchid.id17741.tr406385	PaF3' H1	7.56	9.43	25.19	11.91	5.96	10.07	194.62	5.43	7.90	6.39	4.89
orchid.id115099.tr56794	PaCYP71A1	0.2	0.1	0.1	0.7	1.9	1.4	395.4	23.6	0.1	0.2	0.1
orchid.id36575.tr215222	PaWRKY3	0.0	0.0	0.0	0.0	0.0	0.0	6.1	0.0	0.0	0.0	0.0
orchid.id184974.tr136611	PaWRKY4	0.0	0.0	0.0	0.0	0.0	0.0	9.1	1.1	0.0	0.0	0.0
orchid.id154271.tr406853	PaECR1	1.1	0.1	0.6	1.2	2.9	1.2	313.0	3.4	0.8	0.8	3.1
orchid.id163617.tr122100	PaPNP1	3.7	1.8	1.5	9.6	0.6	0.3	106.6	3.6	0.9	3.6	0.5
orchid.id156327.tr422593	PaRALF1	1.4	0.6	0.0	0.3	1.2	0.0	159.4	0.2	26.2	20.7	1.4
orchid.id133178.tr112803	PaMLP1	3.1	1.3	0.5	2.4	0.9	2.2	1046.2	7.6	0.2	7.1	6.9
orchid.id148348.tr112803	PaMLP2	4.3	1.4	0.6	3.1	0.9	2.6	1318.7	8.4	0.2	10.6	10.9
orchid.id136038.tr32844	PaPRX1	0.3	0.5	0.1	0.4	0.5	0.3	253.7	27.6	0.1	0.1	0.5
orchid.id123338.tr499847	PaCOMT1	1.4	1.1	1.4	3.0	4.0	3.7	645.1	28.4	1.8	15.0	8.7
orchid.id21743.tr69582	PaCOMT2	0.0	0.0	0.0	0.2	0.0	0.2	28.8	0.0	0.0	0.0	0.0

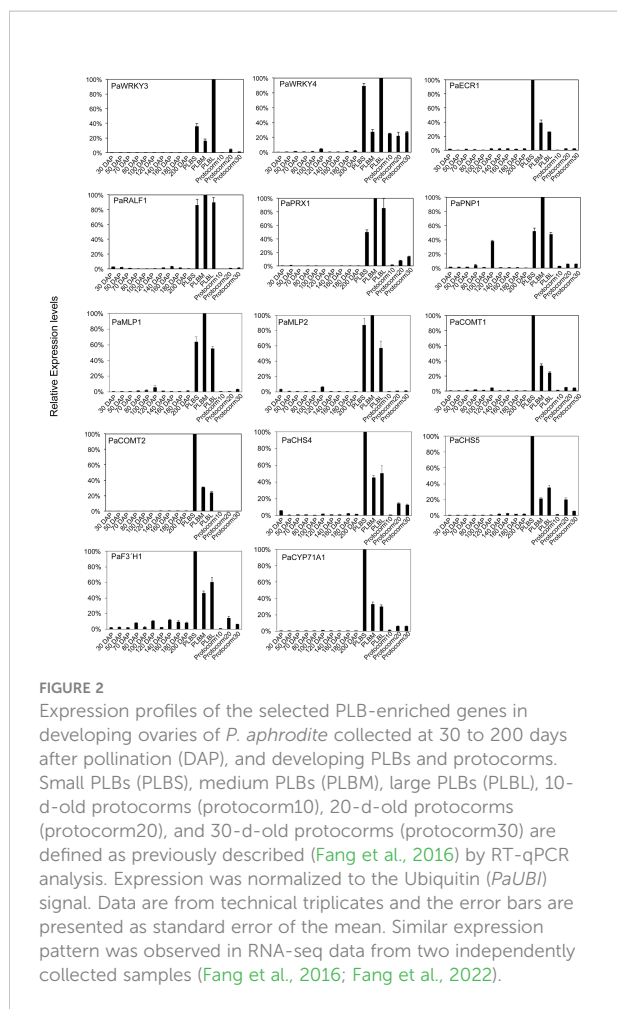
PLB-enriched *PaCYC71A1*, which is related to Arabidopsis *CYP71A12* (Bak et al., 2011), encodes a putative cytochrome P450 monooxygenase (Table 1). Arabidopsis *CYP71A12* takes part in biosynthesis of camalexin, a major phytoalexin important for disease resistance (Millet et al., 2010; Klein et al., 2013; Pastorczyk et al., 2020). Additionally, two PLB-enriched WRKY transcription factors, *PaWRKY3* and *PaWRKY4*, were identified. *PaWRKY3* belongs to the group III WRKY transcription factors (Supplementary Figure 1) and is related to Arabidopsis *WRKY70* (Wu et al., 2005). Arabidopsis *WRKY70* modulates salicylic acid (SA)- and jasmonic acid (JA)-mediated defense pathways to regulate plant immunity against bacterial pathogens (Li et al., 2004; Li et al., 2006; Zhou et al., 2018). *PaWRKY4*, on the other hand, encodes a group I WRKY transcription factor that is related to Arabidopsis *WRKY33* (Supplementary Figure 1), which is an important regulator for biosynthesis of camalexin and pathogen-associated molecular patterns (PAMP)/pathogen-triggered reactive oxygen species (ROS) and ethylene production (Qiu et al., 2008; Mao et al., 2011; Li et al., 2012; Zhao et al., 2020; Zhou et al., 2020).

These PLB-enriched genes (Table 1) are also associated with other aspects of plant defense responses. For example, *PaECR1* encodes a potential enoyl-coA reductase that has been shown to play roles in plant defense responses in cotton and *P. amabilis* orchid (Fu et al., 2012; Mustafa et al., 2017). A potential PLANT NATRIURETIC PEPTIDE (PEP) encoded by *PaPEP1A* belongs to a family of peptides involved in regulation of defense responses and ion and water homeostasis (Gehring and Irving, 2013; Ficarra et al., 2018). *MAJOR LATEX PROTEIN1* (*PaMLP1*) and *NORCOCLAURINE SYNTHASE1* (*PaNCS1*) belong to pathogen-related 10 (PR10) and Bet v1 proteins

(Radauer et al., 2008). MLP proteins are known to be involved in various abiotic and biotic responses (Yang et al., 2015; Wang et al., 2016; Holmquist et al., 2021). NCS proteins catalyze the first committed step of biosynthesis of benzyloisoquinoline alkaloids (BIAs) that possess antimicrobial activity (Lee and Facchini, 2010). *PaRALF1*, on the other hand, encodes a protein that is related to Arabidopsis RAPID ALKALINIZATION FACTOR (RALF) peptides, which are found to interact with receptor-like kinase FERONIA to modulate ROS production and plant immune responses (Stegmann et al., 2017; Li et al., 2018; Abarca et al., 2021). The PLB-enriched genes, *PaCOMT1* and *PaCOMT2*, encode putative caffeic acid O-methyltransferases. Rice COMT is reported to have N-acetylserotonin O-methyltransferase (ASMT) activity that converts N-acetylserotonin to melatonin (Byeon et al., 2015), which modulates ROS and SA levels to improve plant responses to various abiotic and biotic stresses (Lee et al., 2015; Khan et al., 2020). Additionally, *PaPRX1* encodes a PLB-enriched peroxidase, which may take part in plant defense responses (O'Brien et al., 2012). The expression patterns of the described PLB-enriched genes have been documented in an independent RNA-seq dataset (Fang et al., 2022) and validated by RT-qPCR analysis in a separate set of samples (Figure 2).

Crude PLB extract slows growth of *A. citrulli* Aac153

Because many plant defense-related genes were specifically induced in developing PLBs, we hypothesized that the dynamic metabolomic reprogramming of developing PLBs leads to

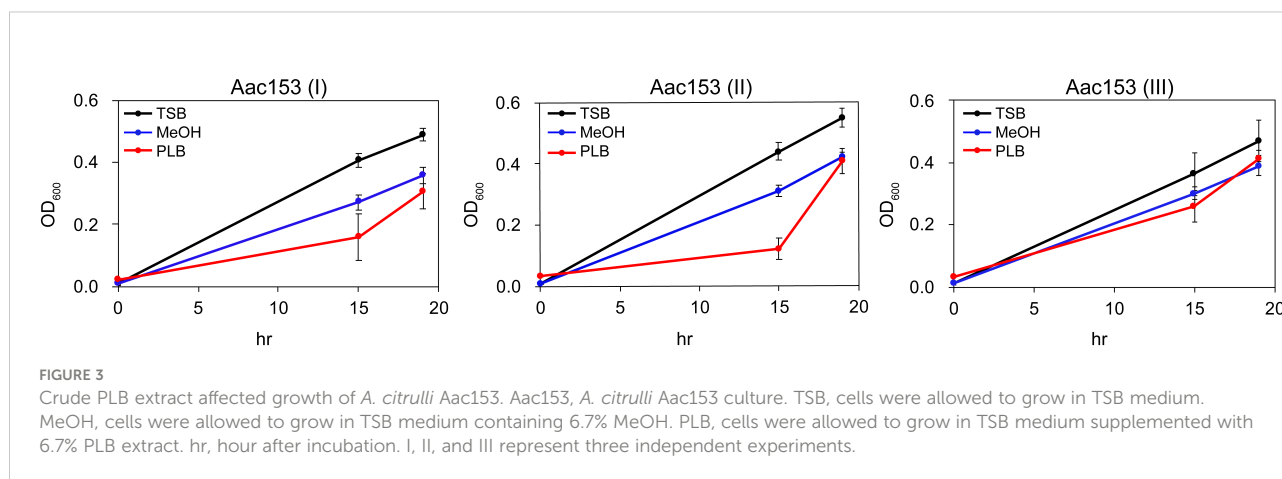


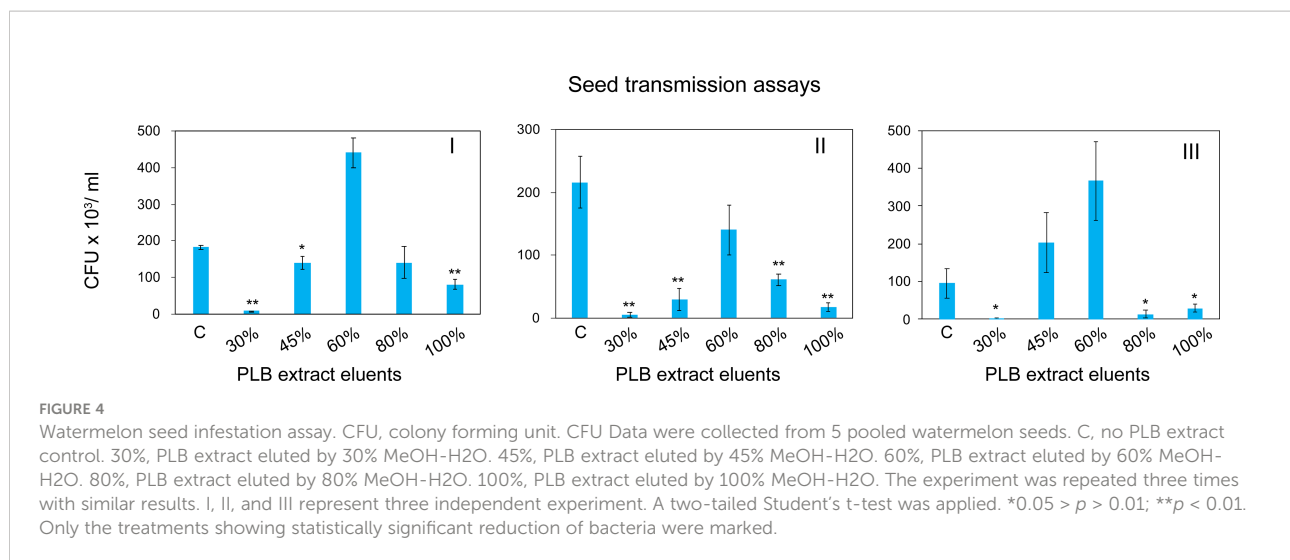
synthesis of antimicrobial metabolites. Ethyl acetate (EtOAc), which is commonly used for plant metabolite extraction (Tamokou et al., 2012; Oliveira et al., 2013; Lien et al., 2014; Yang et al., 2022), was used to prepare PLB crude extract. The crude extract was then tested for its effect on growth of three

plant pathogens including *Acidovorax citrulli* Aac153 (watermelon bacterial fruit blotch disease), *Pectobacterium carotovorum* subsp. *carotovorum* (bacterial soft rot disease), and *Xanthomonas citri* pv. *mangiferaeindicae* (mango bacterial black spot disease). Because PLB crude extract showed consistent inhibitory effect on growth of *A. citrulli* Aac153 in the preliminary test (data not shown), we decided to focus on *A. citrulli* Aac153. To confirm this inhibitory effect, bacterial growth was monitored over 19 hours. In three separate experiments, PLB crude extract slowed the growth of *A. citrulli* Aac153 15 hours after treatment (Figure 3), indicating the presence of anti-bacterial activity in the developing PLBs. However, growth of *A. citrulli* Aac153 eventually caught up 19 hours after incubation, suggesting other substances may interfere with the inhibitory activity.

PLB extract reduces number of *A. citrulli* Aac153 bacteria associated with watermelon seeds

To enrich and separate the active metabolites from interfering substances, PLB crude extract was fractionated by solid phase extraction (SPE) based on the chemical polarity. Chemicals eluted with different concentrations of MeOH were collected for seed infestation test. Watermelon seeds were inoculated with *A. citrulli* Aac153 in the presence of different PLB eluents (see Materials and Methods). Interestingly, 30% MeOH PLB eluent was shown to be most effective in reducing the number of bacteria associated with watermelon seeds (Figure 4). Only 2.1% to 6.5% of bacterial cells remained after co-incubation with 30% MeOH-water PLB eluent. Co-incubating seeds with the 100% MeOH PLB eluents was also effective in reducing bacterial number but to a lesser extent (between 7.9% to 53.2%) with relatively large variations as compared to the 30% MeOH-water PLB eluents. This indicates





that compounds with the potent antibacterial activity were enriched in 30% MeOH-water PLB eluent.

PLB extract alleviates disease symptoms caused by *A. citrulli* Aac153

Because 30% MeOH PLB eluent was effective in reducing the number of bacteria attached to the watermelon seeds, we then investigated whether it can protect watermelon seedlings from *A. citrulli* Aac153 infection. To this end, watermelon seeds were incubated with *A. citrulli* Aac153 culture in the presence of 1x or 1/5x of 30% MeOH PLB eluent.

Watermelon seedlings from seeds incubated with CMC or CMC + 6.7% MeOH were used as controls, and no disease symptoms were observed on these seedlings (Figure 5A; Supplementary Figure 2). On the other hand, watermelon seedlings inoculated with *A. citrulli* Aac153 inoculation, showed water-soaking spots and necrotic lesions on the hypocotyl or cotyledons, typical BFB symptoms (Walcott, 2008; Bahar and Burdman, 2010), at 12 days after transplantation (DAP). Co-treatment of 1x 30% MeOH PLB eluent alleviated disease symptoms on the *A. citrulli* Aac153-infected seedlings. Moreover, 1/5 x 30% MeOH PLB eluent was also potent in protecting the *A. citrulli* Aac153-infected seedlings. This experiment was conducted three times and similar results were obtained each time. Disease assessment was quantified by the disease index scale as detailed in Materials and Methods. Disease severity of the *A. citrulli* Aac153-infected seedlings ranged from 65.5% to 81% (Figure 5B). The disease severity of the *A. citrulli* Aac153-infected seedlings treated with 1x 30% MeOH PLB eluent was reduced to 38.0% to 46%. Even 1/5 x 30% MeOH PLB eluent was able to protect the *A. citrulli* Aac153-infected seedlings and

disease severity was reduced to 46% to 48.2%. Importantly, PLB treatment at the higher concentration only slightly affected seed germination (*p* value = 0.03, Table 2). Together, we conclude that PLB-derived metabolites possess the antibacterial activity that protects watermelon seedlings from *A. citrulli* Aac153 infection.

Discussion

Phalaenopsis orchid PLBs possess the antibacterial activity

Accumulated studies have provided molecular evidence linking pluripotency acquisition of plant regeneration processes to activation of defense responses (Chupeau et al., 2013; Ikeuchi et al., 2017; Iwase et al., 2021; Li et al., 2021). Furthermore, defense- or stress-associated pathways are proposed to be part of a gene regulatory network for cell proliferation and organ regeneration (Heyman et al., 2018; Wu et al., 2020a; Zeng et al., 2021). However, there is little evidence to support the notion that the rewired gene regulatory network of regenerated tissues is capable of synthesizing antimicrobial metabolites. Here, we showed that orchid PLB contains antibacterial substances that are potent in slowing the growth of *A. citrulli* Aac153, reducing the number of *A. citrulli* Aac153 associated with watermelon seeds, and protecting watermelon seedlings from severe infection by *A. citrulli* Aac153. Why would the developing PLBs possess the antibacterial activity? PLB is a regenerated structure induced by cutting during tissue culture (Yam and Arditti, 2009). Tissue injury caused by cutting during tissue culture triggers wounding-induced responses that mimic mechanical wounding triggered by herbivores and insects. It is therefore possible that wounding activates responses that contribute to production of antibacterial activity in PLBs. Wounding induced by herbivores and insects is

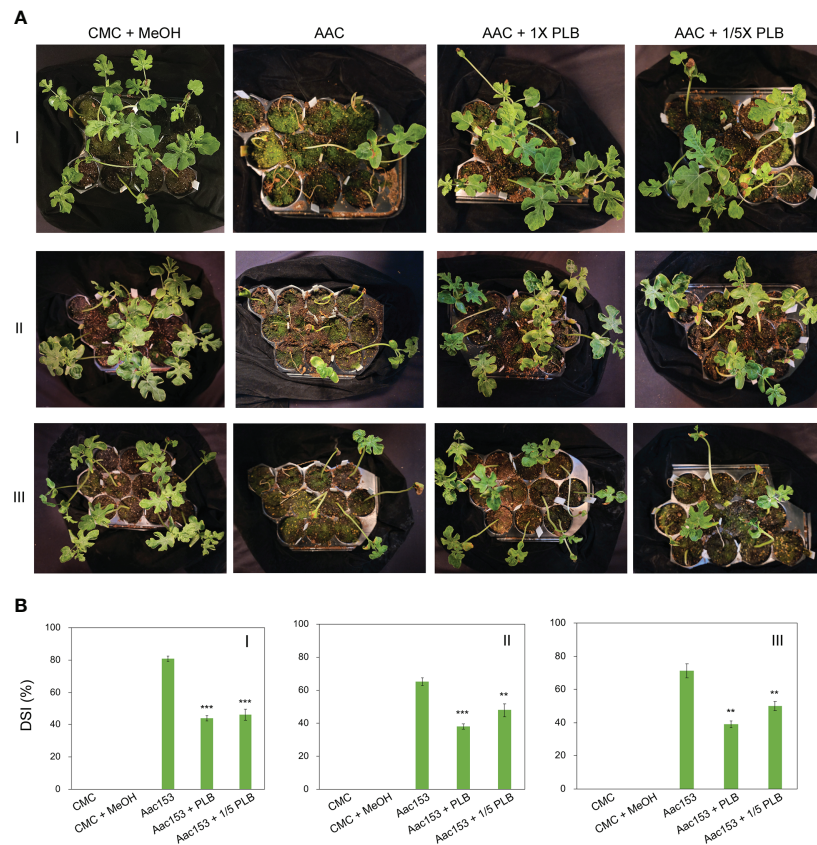


FIGURE 5

Thirty percent MeOH PLB eluent alleviates disease symptoms of watermelon bacterial blotch disease. (A) Disease symptoms of *A. citrulli* Aac153-infested seedlings at 12 days after transplantation (DAT). (B) Disease severity index (DSI) of 12 DAT watermelon seedlings after treatments. CMC + MeOH, seeds were incubated with 6.7% MeOH in CMC medium. Aac153, seeds were incubated with *A. citrulli* Aac153 in the presence of 6.7% MeOH. Aac153 + PLB, seeds were incubated with *A. citrulli* Aac153 in the presence of 30% MeOH PLB extract. Aac153 + 1/5 PLB, seeds were incubated with *A. citrulli* Aac153 in the presence of one-fifth 30% MeOH PLB extract. The experiment was repeated three times. I, II, and III represent three independent experiments. Twenty-two seeds were used in each experiment except CMC and CMC + MeOH treatments. A two-tailed Student's t-test was applied. **0.01 > p > 0.001; ***p < 0.001.

known to trigger *de novo* synthesis of ethylene, jasmonic acid, and abscisic acid (Hyodo et al., 1983; Peña-Cortés et al., 1995; Bergey et al., 1996; Bouquin et al., 1997) that subsequently induce plant immunity responses to protect plants from infection by microbial pathogens (Savatin et al., 2014). Wounding also induces an array of immunity-related transcription factors such as WRKY transcription factors whose functions are to activate plant

defense responses and prevent bacterial and fungal infection (Li et al., 2004; Li et al., 2006; Zheng et al., 2006; Pandey et al., 2010; Sarris et al., 2015; Zhou et al., 2018). Coincidentally, some of the WRKY transcription factors also play a role in tissues regeneration (Che et al., 2006; Xu et al., 2012; Iwase et al., 2021). In this study, we showed that *PaWRKY3* and *PaWRKY4* (Table 1, Figure 2) are PLB-enriched transcription factors. *PaWRKY3* and *PaWRKY4* are

TABLE 2 Germination rate of watermelon seeds.

	CMC	CMC + MeOH	Aac153	Aac153 + PLB	Aac153 + 1/5 PLB
Germination rate	100.0 ± 0.0%	90.0 ± 9.1%	87.9 ± 8.0%	89.4 ± 6.1%	93.9 ± 3.0%
p value	N/A	0.42	0.15	0.03	0.18

CMC, seeds incubated with CMC medium before germination. CMC + MeOH, seeds incubated with 6.7% MeOH in CMC medium before germination. Aac153, seeds incubated with *A. citrulli* Aac153 in the presence of 6.7% MeOH. Aac153 + PLB, seeds incubated with *A. citrulli* Aac153 in the presence of 30% MeOH PLB extract. Aac153 + 1/5 PLB, seeds incubated with *A. citrulli* Aac153 in the presence of one-fifth 30% MeOH PLB extract. Twenty-two seeds were used in each experiment except CMC and CMC + MeOH control experiments. For CMC and CMC + MeOH treatments, eleven seeds were used in each experiment. The experiment was repeated three times. N/A, not applicable. p values were derived from SPSS Student's t-test analysis.

the homologs of Arabidopsis defense response regulators, *WRKY70* and *WRKY33*, respectively (Li et al., 2017; Zhou et al., 2018). Arabidopsis *WRKY70* is directly regulated by the key immunity signaling regulator NONEXPRESSOR OF PR GENES1 (NPR1) and *wrky70* mutant displayed reduced resistance to the oomycete *Hyaloperonospora parasitica* (Wang et al., 2006; Knoth et al., 2007). Arabidopsis *WRKY33*, on the other hand, is required for pathogen-induced biosynthesis of camalexin and ethylene response (Mao et al., 2011; Li et al., 2012). Considering the antimicrobial activity of PLB extract, we hypothesize that *PaWRKY3* and *PaWRKY4* may be part of cell reprogramming networks in developing PLBs that contribute to the defense activation and accumulation of antimicrobial metabolites. The functions of these *PaWRKY3* and *PaWRKY4* transcription factors remain to be determined.

Phytoalexins are reported to play important roles in combating a broad range of bacterial and fungal pathogens (Glazebrook and Ausubel, 1994; Graham et al., 2007; Ahuja et al., 2012; Schmelz et al., 2014). Because wounding has been reported to induce phytoalexin biosynthesis (Guillet and De Luca, 2005; Naoumkina et al., 2007; Farag et al., 2008), we speculated that phytoalexins make up part of the PLB-based antibacterial metabolites. Since chalcone synthases (*PaCHS4* and *PaCHS5*) and flavonoid 3' hydroxylase (*PaF3' H1*) were specifically upregulated in PLBs, it is possible that flavonoids- and isoflavonoid-type phytoalexins were accumulated to provide the antimicrobial activity. However, we cannot exclude the possibility that other types of phytoalexins or cellular processes provide the inhibitory effect against *A. citrulli* Aac153. The active substance(s) remain to be purified and identified.

Orchid PLBs may enable discovery of novel antimicrobial metabolites

Plants possess a rich repertoire of phytochemicals that are important for plants to combat pathogens and predators, and adapt to biotic and abiotic stresses in the natural environment (Pichersky and Lewinsohn, 2011; Moghe and Last, 2015). The fact that the stress-activated plant regeneration program is often associated with defense-associated cellular activity suggests that the molecular wiring of development and plant immunity processes is overlapping. This notion is supported by a recent study showing that plant development and immunity share a signaling network (Wu et al., 2020b). In addition to a signaling network, we hypothesize that the cellular metabolism is also reprogrammed to accommodate stress-associated organogenesis and plant immunity functions. The available genome and transcriptome databases of *P. aphrodite* (Chao et al., 2017; Chao et al., 2018) provide the molecular basis to discover pathways and to decode the molecular wiring of PLB-associated antimicrobial metabolites (Owen et al., 2017). We

suggest that PLBs may be used as a metabolite tap for identifying novel antibacterial compounds. Identification and characterization of the PLB-associated antimicrobial metabolites may provide a new route to harness the chemical diversity of orchid species.

Bacterial fruit blotch disease is a serious threat to the cucurbit (gourd) industry. Even though seed sanitation with hydrochloric acid or peroxyacetic acid have been proven to be effective at eradicating pathogens from infested seeds, seed quality is affected substantially (Hopkins et al., 1996; Hopkins et al., 2003). Moreover, seed disinfection treatments and chemical control in the field are limited in their ability to reduce the yield losses associated with BFB (Burdman and Walcott, 2012), most likely because the applied chemicals cannot reach bacteria that are associated with developing embryos and seed coats (Rane and Latin, 1992; Hopkins and Thompson, 2002; Dutta et al., 2016). Since PLB-based extract did not affect the viability or germination rate of the watermelon seeds (Table 2), it may serve as an alternative to control watermelon fruit blotch disease.

Data availability statement

The original contributions presented in the study are included in the article/Supplementary Materials. Further inquiries can be directed to the corresponding authors.

Author contributions

S-CF conceived the idea and coordinated the study. S-CF, B-LH, and T-PH designed the experiments. S-CF, B-LH, and T-PH analyzed the data. S-CF and T-PH wrote the manuscript. B-LH and J-CC conducted the experiments. All the authors have read and approved the final manuscript.

Funding

This work was supported by the Ministry of Science and Technology (MOST 106-2313-B-001-004-MY3 and MOST 109-2313-B-001 -015 -MY3 to SCF).

Acknowledgments

We thank Dr. Yi-Hsien Lin for providing us *Acidovorax citrulli* Aac153 strain, Mr. Fu-Chieh Yang for technical support, and Ms. Miranda Loney for English editing.

Conflict of interest

S-CF and B-LH are named inventors on a patent application pertaining to the technology that was filed by Academia Sinica.

The remaining authors declare that the research was conducted in the absence of any commercial or financial relationships that could be construed as a potential conflict of interest.

Publisher's note

All claims expressed in this article are solely those of the authors and do not necessarily represent those of their affiliated

organizations, or those of the publisher, the editors and the reviewers. Any product that may be evaluated in this article, or claim that may be made by its manufacturer, is not guaranteed or endorsed by the publisher.

Supplementary material

The Supplementary Material for this article can be found online at: <https://www.frontiersin.org/articles/10.3389/fpls.2022.1054586/full#supplementary-material>

References

- Abarca, A., Franck, C. M., and Zipfel, C. (2021). Family-wide evaluation of RAPID ALKALINIZATION FACTOR peptides. *Plant Physiol.* 187 (2), 996–1010. doi: 10.1093/plphys/kiab308
- Ahuja, I., Kissen, R., and Bones, A. M. (2012). Phytoalexins in defense against pathogens. *Trends Plant Sci.* 17 (2), 73–90. doi: 10.1016/j.tplants.2011.11.002
- Almagro, L., Gomez Ros, L. V., Belchi-Navarro, S., Bru, R., Ros Barcelo, A., and Pedreno, M. A. (2009). Class III peroxidases in plant defence reactions. *J. Exp. Bot.* 60 (2), 377–390. doi: 10.1093/jxb/ern277
- Assouline, I., Milshtein, H., Mizrahi, M., Levy, E., and Ben-Ze'ev, I. S. (1997). *Acidovorax avenae* subsp. *citruilli* transmitted by solanaceous seeds. *Phytoparasitica* 25 (2), 117–118. doi: 10.1007/bf02981192
- Bahar, O., and Burdman, S. (2010). Bacterial fruit blotch: A threat to the cucurbit industry. *Israel J. Plant Sci.* 58 (1), 19–31. doi: 10.1560/ijps.58.1.19
- Bak, S., Beisson, F., Bishop, G., Hamberger, B., Hofer, R., Paquette, S., et al. (2011). Cytochromes p450. *Arabidopsis Book* 9, e0144. doi: 10.1199/tab.0144
- Bergey, D. R., Howe, G. A., and Ryan, C. A. (1996). Polypeptide signaling for plant defensive genes exhibits analogies to defense signaling in animals. *Proc. Natl. Acad. Sci. U.S.A.* 93 (22), 12053–12058. doi: 10.1073/pnas.93.22.12053
- Bory, S., Grisoni, M., Duval, M. F., and Besse, P. (2008). Biodiversity and preservation of vanilla: present state of knowledge. *Genet. Resour. Crop Evol.* 55 (4), 551–571. doi: 10.1007/s10722-007-9260-3
- Bouquin, T., Lasserre, E., Pradier, J., Pech, J. C., and Balague, C. (1997). Wound and ethylene induction of the ACC oxidase melon gene CM-ACO1 occurs via two direct and independent transduction pathways. *Plant Mol. Biol.* 35 (6), 1029–1035. doi: 10.1023/a:1005902226054
- Bulpitt, C. J., Li, Y., Bulpitt, P. F., and Wang, J. (2007). The use of orchids in Chinese medicine. *J. R Soc. Med.* 100 (12), 558–563. doi: 10.1258/jrsm.100.12.558
- Burdman, S., Kots, N., Kritzman, G., and Kopelowitz, J. (2005). Molecular, physiological, and host-range characterization of *Acidovorax avenae* subsp. *citruilli* isolates from watermelon and melon in Israel. *Plant Dis.* 89 (12), 1339–1347. doi: 10.1094/PD-89-1339
- Burdman, S., and Walcott, R. (2012). *Acidovorax citruilli*: generating basic and applied knowledge to tackle a global threat to the cucurbit industry. *Mol. Plant Pathol.* 13 (8), 805–815. doi: 10.1111/j.1364-3703.2012.00810.x
- Byeon, Y., Choi, G. H., Lee, H. Y., and Back, K. (2015). Melatonin biosynthesis requires n-acetylserotonin methyltransferase activity of caffeic acid O-methyltransferase in rice. *J. Exp. Bot.* 66 (21), 6917–6925. doi: 10.1093/jxb/erv396
- Chang, J.-J., Wu, P.-Y., Lin, Y.-N., Deng, W.-., and Lin, Y.-H. (2019). Intensification of PAMP-triggered immunity in watermelon by *Bacillus* spp. strains as a strategy for controlling bacterial fruit blotch disease. *J. Plant Med.* 61 (1), 39–48. doi: 10.6716/JPM.201903_61(1).0004
- Chao, Y. T., Chen, W. C., Chen, C. Y., Ho, H. Y., Yeh, C. H., Kuo, Y. T., et al. (2018). Chromosome-level assembly, genetic and physical mapping of *Phalaenopsis aphrodite* genome provides new insights into species adaptation and resources for orchid breeding. *Plant Biotechnol. J.* 16 (12), 2027–2041. doi: 10.1111/pbi.12936
- Chao, Y. T., Yen, S. H., Yeh, J. H., Chen, W. C., and Shih, M. C. (2017). Orchidstra 2.0—a transcriptomics resource for the orchid family. *Plant Cell Physiol.* 58 (1), 1–13. doi: 10.1093/pcp/pcw220
- Che, P., Lall, S., Nettleton, D., and Howell, S. H. (2006). Gene expression programs during shoot, root, and callus development in arabidopsis tissue culture. *Plant Physiol.* 141 (2), 620–637. doi: 10.1104/pp.106.081240
- Chen, Y.-J. (2014). *Development of a new selective medium for acidovorax citruilli*. master thesis (Taichung, Taiwan: National Chung Hsing University).
- Cheng, A.-S. (2009). “Bacterial fruit blotch disease,” in *Compendium of melon diseases and pests* (Taiwan: Bureau of Animal and Plant Health Inspection and Quarantine, Council of Agriculture).
- Cheng, A. H., Hsu, Y. L., Huang, T. C., and Wang, H. L. (2000). Susceptibility of cucurbits to *acidovorax avenae* subsp. *citruilli* and control of fruit blight on melon. *Plant Pathol. Bull.* 9, 151–156. doi: 10.6649/PPB.200012_9(4).0004
- Chugh, S., Guha, S., and Rao, I. U. (2009). Micropropagation of orchids: a review on the potential of different explants. *Sci. Hortic.* 122 (4), 507–520. doi: 10.1016/j.Scienta.2009.07.016
- Chupeau, M. C., Granier, F., Pichon, O., Renou, J. P., Gaudin, V., and Chupeau, Y. (2013). Characterization of the early events leading to totipotency in an arabidopsis protoplast liquid culture by temporal transcript profiling. *Plant Cell* 25 (7), 2444–2463. doi: 10.1105/tpc.113.109538
- Dao, T. T., Linthorst, H. J., and Verpoorte, R. (2011). Chalcone synthase and its functions in plant resistance. *Phytochem. Rev.* 10 (3), 397–412. doi: 10.1007/s11101-011-9211-7
- Denance, N., Sanchez-Vallet, A., Goffner, D., and Molina, A. (2013). Disease resistance or growth: the role of plant hormones in balancing immune responses and fitness costs. *Front. Plant Sci.* 4. doi: 10.3389/fpls.2013.00155
- Dutta, B., Schneider, R. W., Robertson, C. L., and Walcott, R. R. (2016). Embryo localization enhances the survival of *Acidovorax citruilli* in watermelon seeds. *Phytopathology* 106 (4), 330–338. doi: 10.1094/PHYTO-09-15-0232-R
- Fang, S. C. (2021). “Comparative transcriptomics study provides new insights into the specialized reproductive developmental programs of phalaenopsis aphrodite,” in *Orchid biotechnology IV*, vol. 173–205. Eds. W. H. Chen and H. H. Chen (Singapore: World Scientific).
- Fang, S. C., Chen, J. C., Chang, P. Y., and Lin, H. Y. (2022). Co-Option of the SHOOT MERISTEMLESS network regulates protocorm-like body development in *Phalaenopsis aphrodite*. *Plant Physiol.* 190 (1), 127–145. doi: 10.1093/plphys/kiac100
- Fang, S. C., Chen, J. C., and Wei, M. J. (2016). Protocorms and protocorm-like bodies are molecularly distinct from zygotic embryonic tissues in *Phalaenopsis aphrodite*. *Plant Physiol.* 171 (4), 2682–2700. doi: 10.1104/pp.16.00841
- Farag, M. A., Huhman, D. V., Dixon, R. A., and Sumner, L. W. (2008). Metabolomics reveals novel pathways and differential mechanistic and elicitor-specific responses in phenylpropanoid and isoflavonoid biosynthesis in medicago truncatula cell cultures. *Plant Physiol.* 146 (2), 387–402. doi: 10.1104/pp.107.108431
- Ficarra, F. A., Grandellis, C., Garavaglia, B. S., Gottig, N., and Ottado, J. (2018). Bacterial and plant natriuretic peptides improve plant defence responses against pathogens. *Mol. Plant Pathol.* 19 (4), 801–811. doi: 10.1111/mpp.12560
- Field, B., Jordan, F., and Osbourn, A. (2006). First encounters—deployment of defence-related natural products by plants. *New Phytol.* 172 (2), 193–207. doi: 10.1111/j.1469-8137.2006.01863.x

- Fu, S. F., Tsai, T. M., Chen, Y. R., Liu, C. P., Haiso, L. J., Syue, L. H., et al. (2012). Characterization of the early response of the orchid, *Phalaenopsis amabilis*, to *Erwinia chrysanthemi* infection using expression profiling. *Physiol. Plant* 145 (3), 406–425. doi: 10.1111/j.1399-3054.2012.01582.x
- Gehring, C., and Irving, H. (2013). Plant natriuretic peptides: systemic regulators of plant homeostasis and defense that can affect cardiomyoblasts. *J. Investig. Med.* 61 (5), 823–826. doi: 10.2310/JIM.0b013e3182923395
- Glazebrook, J., and Ausubel, F. M. (1994). Isolation of phytoalexin-deficient mutants of *Arabidopsis thaliana* and characterization of their interactions with bacterial pathogens. *Proc. Natl. Acad. Sci. U.S.A.* 91 (19), 8955–8959. doi: 10.1073/pnas.91.19.8955
- Gonzalez, A. M., Marcel, T. C., Kohutova, Z., Stam, P., van der Linden, C. G., and Niks, R. E. (2010). Peroxidase profiling reveals genetic linkage between peroxidase gene clusters and basal host and non-host resistance to rusts and mildew in barley. *PLoS One* 5 (8), e10495. doi: 10.1371/journal.pone.0010495
- Graham, T. L., Graham, M. Y., Subramanian, S., and Yu, O. (2007). RNAi silencing of genes for elicitation or biosynthesis of 5-deoxyisoflavonoids suppresses race-specific resistance and hypersensitive cell death in *Phytophthora sojae* infected tissues. *Plant Physiol.* 144 (2), 728–740. doi: 10.1104/pp.107.097865
- Guillet, G., and De Luca, V. (2005). Wound-inducible biosynthesis of phytoalexin hydroxycinnamic acid amides of tyramine in tryptophan and tyrosine decarboxylase transgenic tobacco lines. *Plant Physiol.* 137 (2), 692–699. doi: 10.1104/pp.104.050294
- Heyman, J., Canher, B., Bisht, A., Christiaens, F., and De Veylder, L. (2018). Emerging role of the plant ERF transcription factors in coordinating wound defense responses and repair. *J. Cell Sci.* 131 (2), jcs208215. doi: 10.1242/jcs.208215
- Holmquist, L., Dolfors, F., Fogelqvist, J., Cohn, J., Kraft, T., and Dixelius, C. (2021). Major latex protein-like encoding genes contribute to *Rhizoctonia solani* defense responses in sugar beet. *Mol. Genet. Genomics* 296 (1), 155–164. doi: 10.1007/s00438-020-01735-0
- Hopkins, D. L., Cucuzza, J. D., and Watterson, J. C. (1996). Wet seed treatments for the control of bacterial fruit blotch of watermelon. *Plant Dis.* 80 (5), 529–532. doi: 10.1094/Pd-80-0529
- Hopkins, D. L., and Thompson, C. M. (2002). Seed transmission of *Acidovorax avenae* subsp. *citrullis* in cucurbits. *Hortscience* 37 (6), 924–926. doi: 10.21273/Hortsci.37.6.924
- Hopkins, D. L., Thompson, C. M., Hilgren, J., and Lovic, B. (2003). Wet seed treatment with peroxyacetic acid for the control of bacterial fruit blotch and other seedborne diseases of watermelon. *Plant Dis.* 87 (12), 1495–1499. doi: 10.1094/Pdis.2003.87.12.1495
- Hyodo, H., Tanaka, K., and Watanabe, K. (1983). Wound-induced ethylene production and 1-aminocyclopropane-1-carboxylic acid synthase in mesocarp tissue of winter squash fruit. *Plant Cell Physiol.* 24 (6), 963–969. doi: 10.1093/oxfordjournals.pcp.a076626
- Ikeuchi, M., Iwase, A., Rymen, B., Lambalez, A., Kojima, M., Takebayashi, Y., et al. (2017). Wounding triggers callus formation via dynamic hormonal and transcriptional changes. *Plant Physiol.* 175 (3), 1158–1174. doi: 10.1104/pp.17.01035
- Islam, M. R., Hossain, M. R., Jesse, D. M. I., Jung, H. J., Kim, H. T., Park, J. I., et al. (2020). Characterization, identification and expression profiling of genome-wide r-genes in melon and their putative roles in bacterial fruit blotch resistance. *BMC Genet.* 21 (1), 80. doi: 10.1186/s12863-020-00885-9
- Iwase, A., Kondo, Y., Laohavisit, A., Takebayashi, A., Ikeuchi, M., Matsuoka, K., et al. (2021). WIND transcription factors orchestrate wound-induced callus formation, vascular reconnection and defense response in *Arabidopsis*. *New Phytol.* 232 (2), 734–752. doi: 10.1111/nph.17594
- Jones, D., and Tisserat, B. (1990). Clonal propagation of orchids. *Methods Mol. Biol.* 6, 181–191. doi: 10.1385/0-89603-161-6:181
- Khan, A., Numan, M., Khan, A. L., Lee, I. J., Imran, M., Asaf, S., et al. (2020). Melatonin: Awakening the defense mechanisms during plant oxidative stress. *Plants (Basel)* 9 (4), 407. doi: 10.3390/plants9040407
- Klein, A. P., Anarat-Cappillino, G., and Sattely, E. S. (2013). Minimum set of cytochromes P450 for reconstituting the biosynthesis of camalexin, a major *Arabidopsis* antibiotic. *Angew Chem. Int. Ed Engl.* 52 (51), 13625–13628. doi: 10.1002/anie.201307454
- Knott, C., Ringler, J., Dangel, J. L., and Eulgem, T. (2007). *Arabidopsis* WRKY70 is required for full RPP4-mediated disease resistance and basal defense against *Hyaloperonospora parasitica*. *Mol. Plant Microbe Interact.* 20 (2), 120–128. doi: 10.1094/MPMI-20-2-0120
- Kuo, Y. T., Chao, Y. T., Chen, W. C., Shih, M. C., and Chang, S. B. (2019). Segmental and tandem chromosome duplications led to divergent evolution of the chalcone synthase gene family in *Phalaenopsis* orchids. *Ann. Bot.* 123 (1), 69–77. doi: 10.1093/aob/mcy136
- Lee, H. Y., Byeon, Y., Tan, D. X., Reiter, R. J., and Back, K. (2015). *Arabidopsis* serotonin n-acetyltransferase knockout mutant plants exhibit decreased melatonin and salicylic acid levels resulting in susceptibility to an avirulent pathogen. *J. Pineal Res.* 58 (3), 291–299. doi: 10.1111/jpi.12214
- Lee, E. J., and Facchini, P. (2010). Norcoclaurine synthase is a member of the pathogenesis-related 10/Bet v1 protein family. *Plant Cell* 22 (10), 3489–3503. doi: 10.1105/tpc.110.077958
- Li, J., Brader, G., Kariola, T., and Palva, E. T. (2006). WRKY70 modulates the selection of signaling pathways in plant defense. *Plant J.* 46 (3), 477–491. doi: 10.1111/j.1365-313X.2006.02712.x
- Li, J., Brader, G., and Palva, E. T. (2004). The WRKY70 transcription factor: a node of convergence for jasmonate-mediated and salicylate-mediated signals in plant defense. *Plant Cell* 16 (2), 319–331. doi: 10.1105/tpc.016980
- Lien, H. M., Tseng, C. J., Huang, C. L., Lin, Y. T., Chen, C. C., and Lai, Y. Y. (2014). Antimicrobial activity of *Androdia camphorata* extracts against oral bacteria. *PLoS One* 9 (8), e105286. doi: 10.1371/journal.pone.0105286
- Li, C., Liu, X., Qiang, X., Li, X., Li, X., Zhu, S., et al. (2018). EBP1 nuclear accumulation negatively feeds back on FERONIA-mediated RALF1 signaling. *PLoS Biol.* 16 (10), e2006340. doi: 10.1371/journal.pbio.2006340
- Li, G., Meng, X., Wang, R., Mao, G., Han, L., Liu, Y., et al. (2012). Dual-level regulation of ACC synthase activity by MPK3/MPK6 cascade and its downstream WRKY transcription factor during ethylene induction in *Arabidopsis*. *PLoS Genet.* 8 (6), e1002767. doi: 10.1371/journal.pgen.1002767
- Lin, H. Y., Chen, J. C., Wei, M. J., Lien, Y. C., Li, H. H., Ko, S. S., et al. (2014). Genome-wide annotation, expression profiling, and protein interaction studies of the core cell-cycle genes in *Phalaenopsis aphrodite*. *Plant Mol. Biol.* 84 (1–2), 203–226. doi: 10.1007/s11103-013-0128-y
- Li, D., Shu, X., Zhu, P., and Pei, D. (2021). Chromatin accessibility dynamics during cell fate reprogramming. *EMBO Rep.* 22 (2), e51644. doi: 10.15252/embr.202051644
- Li, J., Zhong, R., and Palva, E. T. (2017). WRKY70 and its homolog WRKY54 negatively modulate the cell wall-associated defenses to necrotrophic pathogens in *Arabidopsis*. *PLoS One* 12 (8), e0183731. doi: 10.1371/journal.pone.0183731
- Mao, G., Meng, X., Liu, Y., Zheng, Z., Chen, Z., and Zhang, S. (2011). Phosphorylation of a WRKY transcription factor by two pathogen-responsive MAPKs drives phytoalexin biosynthesis in *Arabidopsis*. *Plant Cell* 23 (4), 1639–1653. doi: 10.1105/tpc.111.084996
- Millet, Y. A., Danna, C. H., Clay, N. K., Songnuan, W., Simon, M. D., Werck-Reichhart, D., et al. (2010). Innate immune responses activated in *Arabidopsis* roots by microbe-associated molecular patterns. *Plant Cell* 22 (3), 973–990. doi: 10.1105/tpc.109.069658
- Moghe, G. D., and Last, R. L. (2015). Something old, something new: conserved enzymes and the evolution of novelty in plant specialized metabolism. *Plant Physiol.* 169 (3), 1512–1523. doi: 10.1104/pp.15.00994
- Mustafa, R., Hamza, M., Kamal, H., Mansoor, S., Scheffler, J., and Amin, I. (2017). Tobacco rattle virus-based silencing of enoyl-coA reductase gene and its role in resistance against cotton wilt disease. *Mol. Biotechnol.* 59 (7), 241–250. doi: 10.1007/s12033-017-0014-y
- Naoumkina, M., Farag, M. A., Sumner, L. W., Tang, Y., Liu, C. J., and Dixon, R. A. (2007). Different mechanisms for phytoalexin induction by pathogen and wound signals in *Medicago truncatula*. *Proc. Natl. Acad. Sci. U.S.A.* 104 (46), 17909–17915. doi: 10.1073/pnas.0708697104
- O'Brien, J. A., Daudi, A., Finch, P., Butt, V. S., Whitelegge, J. P., Souda, P., et al. (2012). A peroxidase-dependent apoplastic oxidative burst in cultured *Arabidopsis* cells functions in MAMP-elicited defense. *Plant Physiol.* 158 (4), 2013–2027. doi: 10.1104/pp.111.190140
- Oliveira, D. A., Salvador, A. A., Smania, A. Jr., Smania, E. F., Maraschin, M., and Ferreira, S. R. (2013). Antimicrobial activity and composition profile of grape (*Vitis vinifera*) pomace extracts obtained by supercritical fluids. *J. Biotechnol.* 164 (3), 423–432. doi: 10.1016/j.jbiotec.2012.09.014
- Owen, C., Patron, N. J., Huang, A., and Osbourn, A. (2017). Harnessing plant metabolic diversity. *Curr. Opin. Chem. Biol.* 40, 24–30. doi: 10.1016/j.cbpa.2017.04.015
- Pandey, S. P., Roccaro, M., Schon, M., Logemann, E., and Somssich, I. E. (2010). Transcriptional reprogramming regulated by WRKY18 and WRKY40 facilitates powdery mildew infection of *Arabidopsis*. *Plant J.* 64 (6), 912–923. doi: 10.1111/j.1365-313X.2010.04387.x
- Pastorczyk, M., Kosaka, A., Pislewska-Bednarek, M., Lopez, G., Frerigmann, H., Kulak, K., et al. (2020). The role of CYP71A12 monooxygenase in pathogen-triggered tryptophan metabolism and *Arabidopsis* immunity. *New Phytol.* 225 (1), 400–412. doi: 10.1111/nph.16118
- Peña-Cortés, H., Fisahn, J., and Willmitzer, L. (1995). Signals involved in wound-induced proteinase inhibitor II gene expression in tomato and potato plants. *Proc. Natl. Acad. Sci. U.S.A.* 92 (10), 4106–4113. doi: 10.1073/pnas.92.10.4106
- Pichersky, E., and Lewinsohn, E. (2011). Convergent evolution in plant specialized metabolism. *Annu. Rev. Plant Biol.* 62, 549–566. doi: 10.1146/annurev-arplant-042110-103814

- Qiu, J. L., Fiil, B. K., Petersen, K., Nielsen, H. B., Botanga, C. J., Thorgrimsen, S., et al. (2008). Arabidopsis MAP kinase 4 regulates gene expression through transcription factor release in the nucleus. *EMBO J.* 27 (16), 2214–2221. doi: 10.1038/emboj.2008.147
- Radauer, C., Lackner, P., and Breiteneder, H. (2008). The bet v 1 fold: an ancient, versatile scaffold for binding of large, hydrophobic ligands. *BMC Evol. Biol.* 8, 286. doi: 10.1186/1471-2148-8-286
- Rane, K. K., and Latin, R. X. (1992). Bacterial fruit blotch of watermelon - association of the pathogen with seed. *Plant Dis.* 76 (5), 509–512. doi: 10.1094/Pd-76-0509
- Sarris, P. F., Duxbury, Z., Huh, S. U., Ma, Y., Segonzac, C., Sklenar, J., et al. (2015). A plant immune receptor detects pathogen effectors that target WRKY transcription factors. *Cell* 161 (5), 1089–1100. doi: 10.1016/j.cell.2015.04.024
- Savatini, D. V., Gramegna, G., Modesti, V., and Cervone, F. (2014). Wounding in the plant tissue: the defense of a dangerous passage. *Front. Plant Sci.* 5. doi: 10.3389/fpls.2014.00470
- Schaad, N. W., Postnikova, E., and Randhawa, P. (2003). *Pseudomonas syringae* "Emergence of *Acidovorax avenae* subsp. *citrulli* as a crop threatening disease of watermelon and melon," (Netherlands: Springer), 573–581.
- Schmelz, E. A., Huffaker, A., Sims, J. W., Christensen, S. A., Lu, X., Okada, K., et al. (2014). Biosynthesis, elicitation and roles of monoterpene phytoalexins. *Plant J.* 79 (4), 659–678. doi: 10.1111/tpj.12436
- Stegmann, M., Monaghan, J., Smakowska-Luzan, E., Rovenich, H., Lehner, A., Holton, N., et al. (2017). The receptor kinase FER is a RALF-regulated scaffold controlling plant immune signaling. *Science* 355 (6322), 287–289. doi: 10.1126/science.aal2541
- Stokstad, E. (2015). BOTANY. orchids' dazzling diversity explained. *Science* 349 (6251), 914. doi: 10.1126/science.349.6251.914
- Tamokou, J. D., Simo Mpetga, D. J., Keilah Lunga, P., Tene, M., Tane, P., and Kuate, J. R. (2012). Antioxidant and antimicrobial activities of ethyl acetate extract, fractions and compounds from stem bark of *Albizia adianthifolia* (Mimosoideae). *BMC Complement Altern. Med.* 12, 99. doi: 10.1186/1472-6882-12-99
- Tang, C. J. (1997). *Studies on bacterial fruit blotch of watermelon caused by acidovorax avenae subsp. citrulli* (National Chung Hsing University: Master Thesis).
- Ton, J., Flors, V., and Mauch-Mani, B. (2009). The multifaceted role of ABA in disease resistance. *Trends Plant Sci.* 14 (6), 310–317. doi: 10.1016/j.tplants.2009.03.006
- Tzeng, K.-C., Lu, Y.-S., Cheng, A.-S., Huang, T.-C., and Hsu, S.-T. (2010). "瓜細菌性果斑病: 病原菌檢測與病害管", in *Special publication TARI* (Taiwan: Taiwan Agricultural Research Institute).
- Walcott, R. R. (2008). "Integrated pest management of bacterial fruit blotch of cucurbits," in *Integrated management of diseases caused by fungi, phytoplasma and bacteria*. Eds. A. Ciancio, K. G. Mukerji (Springer Netherlands: Dordrecht).
- Wang, D., Amornsiripanitch, N., and Dong, X. (2006). A genomic approach to identify regulatory nodes in the transcriptional network of systemic acquired resistance in plants. *PLoS Pathog.* 2 (11), e123. doi: 10.1371/journal.ppat.0020123
- Wang, Y., Yang, L., Chen, X., Ye, T., Zhong, B., Liu, R., et al. (2016). Major latex protein-like protein 43 (MLP43) functions as a positive regulator during abscisic acid responses and confers drought tolerance in *Arabidopsis thaliana*. *J. Exp. Bot.* 67 (1), 421–434. doi: 10.1093/jxb/erv477
- Wu, K. L., Guo, Z. J., Wang, H. H., and Li, J. (2005). The WRKY family of transcription factors in rice and arabidopsis and their origins. *DNA Res.* 12 (1), 9–26. doi: 10.1093/dnares/12.1.9
- Wu, H., Qu, X., Dong, Z., Luo, L., Shao, C., Forner, J., et al. (2020a). WUSCHEL triggers innate antiviral immunity in plant stem cells. *Science* 370 (6513), 227–231. doi: 10.1126/science.abb7360
- Wu, Q., Xu, F., Liu, L., Char, S. N., Ding, Y., Je, B. I., et al. (2020b). The maize heterotrimeric G protein beta subunit controls shoot meristem development and immune responses. *Proc. Natl. Acad. Sci. U.S.A.* 117 (3), 1799–1805. doi: 10.1073/pnas.1917577116
- Xu, K., Liu, J., Fan, M., Xin, W., Hu, Y., and Xu, C. (2012). A genome-wide transcriptome profiling reveals the early molecular events during callus initiation in arabidopsis multiple organs. *Genomics* 100 (2), 116–124. doi: 10.1016/j.ygeno.2012.05.013
- Yam, T. W., and Arditti, J. (2009). History of orchid propagation: a mirror of the history of biotechnology. *Plant Biotechnol. Rep.* 3 (1), 1–56. doi: 10.1007/S11816-008-0066-3
- Yang, C. L., Liang, S., Wang, H. Y., Han, L. B., Wang, F. X., Cheng, H. Q., et al. (2015). Cotton major latex protein 28 functions as a positive regulator of the ethylene responsive factor 6 in defense against *Verticillium dahliae*. *Mol. Plant* 8 (3), 399–411. doi: 10.1016/j.molp.2014.11.023
- Yang, Z., Li, L., Chen, C. H., Zhang, Y. Y., Yang, Y., Zhang, P., et al. (2022). Chemical composition and antibacterial activity of 12 medicinal plant ethyl acetate extracts using LC-MS feature-based molecular networking. *Phytochem. Anal.* 33 (3), 473–489. doi: 10.1002/pca.3103
- Yang, D. L., Yang, Y., and He, Z. (2013). Roles of plant hormones and their interplay in rice immunity. *Mol. Plant* 6 (3), 675–685. doi: 10.1093/mp/sst056
- Zeng, J., Li, X., Ge, Q., Dong, Z., Luo, L., Tian, Z., et al. (2021). Endogenous stress-related signal directs shoot stem cell fate in *Arabidopsis thaliana*. *Nat. Plants* 7 (9), 1276–1287. doi: 10.1038/s41477-021-00985-z
- Zhao, J., Chen, Q., Zhou, S., Sun, Y., Li, X., and Li, Y. (2020). H2Bub1 regulates RbohD-dependent hydrogen peroxide signal pathway in the defense responses to *Verticillium dahliae* toxins. *Plant Physiol.* 182 (1), 640–657. doi: 10.1104/pp.19.00913
- Zheng, Z., Qamar, S. A., Chen, Z., and Mengiste, T. (2006). Arabidopsis WRKY33 transcription factor is required for resistance to necrotrophic fungal pathogens. *Plant J.* 48 (4), 592–605. doi: 10.1111/j.1365-3113X.2006.02901.x
- Zhou, M., Lu, Y., Bethke, G., Harrison, B. T., Hatsugai, N., Katagiri, F., et al. (2018). WRKY70 prevents axenic activation of plant immunity by direct repression of SARD1. *New Phytol.* 217 (2), 700–712. doi: 10.1111/nph.14846
- Zhou, J., Wang, X., He, Y., Sang, T., Wang, P., Dai, S., et al. (2020). Differential phosphorylation of the transcription factor WRKY33 by the protein kinases CPK5/CPK6 and MPK3/MPK6 cooperatively regulates camalexin biosynthesis in arabidopsis. *Plant Cell* 32 (8), 2621–2638. doi: 10.1105/tpc.19.00971