



Community Composition and Structure Affect Ecosystem and Canopy Water Use Efficiency Across Three Typical Alpine Ecosystems

OPEN ACCESS

Yuzhe Li^{1*}, Xinyuan Zhang^{1,2}, Quanqin Shao^{1*}, Jiangwen Fan¹, Zhi Chen³, Jinwei Dong¹, Zhongmin Hu⁴ and Yue Zhan⁵

Edited by:

Huakun Zhou,
Key Laboratory of Restoration
Ecology in Cold Regions, Northwest
Institute of Plateau Biology (CAS),
China

Reviewed by:

Quangang You,
Northwest Institute
of Eco-Environment and Resources,
Chinese Academy of Sciences,
Chinese Academy of Sciences (CAS),
China
Xiaoying Gong,
Fujian Normal University, China

*Correspondence:

Yuzhe Li
liyuzhe@igsnr.ac.cn
Quanqin Shao
Shaoqq@igsnr.ac.cn

Specialty section:

This article was submitted to
Functional Plant Ecology,
a section of the journal
Frontiers in Plant Science

Received: 06 September 2021

Accepted: 21 December 2021

Published: 20 January 2022

Citation:

Li Y, Zhang X, Shao Q, Fan J,
Chen Z, Dong J, Hu Z and Zhan Y
(2022) Community Composition
and Structure Affect Ecosystem
and Canopy Water Use Efficiency
Across Three Typical Alpine
Ecosystems.
Front. Plant Sci. 12:771424.
doi: 10.3389/fpls.2021.771424

¹ Key Laboratory of Land Surface Pattern and Simulation, Institute of Geographical Sciences and Natural Resources Research, Chinese Academy of Sciences, Beijing, China, ² School of Earth Sciences and Resources, China University of Geosciences, Beijing, China, ³ Key Laboratory of Ecosystem Network Observation and Modeling, Synthesis Research Center of Chinese Ecosystem Research Network, Institute of Geographic Sciences and Natural Resources Research, Chinese Academy of Sciences, Beijing, China, ⁴ School of Geography, South China Normal University, Guangzhou, China, ⁵ College of Forestry, Nanjing Forestry University, Nanjing, China

Unique ecosystems distributed in alpine areas of the Qinghai–Tibetan Plateau play important roles in climate change mitigation, local food supply, and conservation of species diversity. To understand the water use efficiency (WUE) of this fragile and sensitive region, this study combined observed data from the eddy covariance system and the Shuttleworth–Wallace (S–W) model to measure the continuous mass exchange, including gross primary productivity (GPP), evapotranspiration (ET), and canopy transpiration (T) throughout 2 or 3 years (2016–2018) in three common alpine ecosystems (i.e., alpine steppe, alpine meadow, and alpine swamp). These ecosystems represent a water availability gradient and thus provide the opportunity to quantify environmental and biological controls on WUE at various spatiotemporal scales. We analyzed the ecosystem WUE (WUE_e; defined as the ratio of GPP to ET) and canopy WUE (WUE_c; defined as the ratio of GPP and canopy T). It was found that the yearly WUE_e was 1.40, 1.63, and 2.16 g C kg⁻¹ H₂O, and the yearly WUE_c was 8.93, 2.46, and 5.19 g C kg⁻¹ H₂O in the three typical ecosystems, respectively. The controlling factors of yearly WUE diverged between WUE_e and WUE_c. We found that plant functional group proportion (e.g., gramineous and Cyperaceae) highly explained the yearly WUE_e variation across sites, and a good correlation was observed between community species diversity and WUE_c. These findings suggest that community composition and trait change are critical in regulating WUE_e and WUE_c across different alpine ecosystems and that the regulation mechanisms may differ fundamentally between WUE_e and WUE_c.

Keywords: evapotranspiration partition, ecosystem water use efficiency, canopy water use efficiency, Qinghai–Tibetan Plateau, alpine ecosystem, community characteristics

INTRODUCTION

The Qinghai–Tibetan Plateau has received international attention because of its contribution to the global carbon budget and the sensitivity and fragility of the alpine ecosystems. This region is considered one of the world's most sensitive areas to climate change (Liu D. et al., 2018; Liu S. et al., 2018). The Three Rivers Headwaters Region, located in the central of Qinghai–Tibetan Plateau, is the most critical area for reserving water resources and maintaining alpine biodiversity (Liu et al., 2008; Wang et al., 2019), and is also an important pasture for the local free-grazing livestock production (Zhang L.X. et al., 2014; Zhang et al., 2019). This area has already experienced a considerable climate change, including air temperature increase ($0.16^{\circ}\text{C decade}^{-1}$) and precipitation change (Wang et al., 2008). These changes may profoundly affect local carbon and water cycles, thus influencing the sustainable use of regional limited water, forage resources, and the welfare of the local people.

Water use efficiency (WUE), the ratio of water loss to carbon gain, links water and carbon cycling together (Hu et al., 2008; Keenan et al., 2013; Ali et al., 2017) and is an important and inherent ecosystem characteristic related to ecosystem productivity and water budget (Ponton et al., 2006; Zhou et al., 2018). WUE change may greatly impact on both forage productivity and regional water balance. Thus, a more accurate and deeper understanding of the dynamics of WUE at various observation scales is conducive to the verification and improvement of the accuracy of assessment of regional resource use (Hu et al., 2008; Niu et al., 2008) and the prediction of the climate effect on the limited forage supply and water resource change.

Ecosystem-scale WUE (WUE_e) is commonly defined as the ratio between gross primary productivity (GPP) and evapotranspiration (ET) (Law et al., 2008), whereas canopy-scale WUE (WUE_c) is defined as the ratio between GPP and canopy transpiration (T) (Niu et al., 2008, 2011). Owing to various analysis scales and data collection techniques, there are differences in the calculation of “productivity” and “water loss” in previous research on WUE and its controlling factors (Zhou et al., 2018; Liu R. et al., 2021). Previous studies have indicated that the variation and composition of ecosystem vapor losses play an important role in shaping WUE and regional environmental conditions of ecologically fragile areas (Bremer et al., 2001; Hu et al., 2009, 2010). However, water resource management based on ET measurements may overestimate the actual water losses of communities, resulting in low WUE (Li et al., 2016). Accordingly, it is necessary to separate the composition of ET accurately and reliably when investigating WUE_e, WUE_c, and their controlling mechanisms. Measurements, such as manipulative measurement with portable infrared analyzer (Ens et al., 2015; Li et al., 2016), stable isotopes (Williams et al., 2004; Hu et al., 2014), lysimeter (Gebler et al., 2015), and eddy covariance techniques (Li et al., 2019b), are used to estimate ET and its components. Eddy covariance systems are feasible methods of continuous observation of ET (Ponton et al., 2006; Li et al., 2016), but are

weak in partitioning ET components. The Shuttleworth–Wallace (S-W) model (Shuttleworth and Wallace, 2010), characterized by its strength in partitioning ecosystem ET components, has been widely used for extracting T from ET since its publication (Hu et al., 2008; Li et al., 2015). Using the data obtained for the eddy covariance system as input, the measured ET can be divided into T and E at a half-hourly resolution, which might resolve the difficulty of continuous ET observation with partitioning.

Understanding the mechanisms underlying variation in WUE response at different scales is necessary to provide data for the validation of any upscaling method (Wu et al., 2015; Liu D. et al., 2018), but there are still biases and conflicts of understanding in WUE controlling mechanisms. In previous studies, WUE_e was commonly predicted to decrease under climate warming (Bell et al., 2015), and decrease (Huxman et al., 2004; Scanlon and Albertson, 2010) or no change (Lauenroth et al., 2000) with increasing precipitation. Leaf area index (LAI) and carbon assimilation are positively related to WUE_e (Farquhar et al., 1989; Hu et al., 2008). In canopy scale, WUE_c suspected depends on the responses of both plant physiology and community structure (Niu et al., 2011). The plant community is usually constituted with many coexisting species that differ in water use strategies that adapt the various ecological niches and the changing environment (Ens et al., 2015; Li et al., 2019a), thereby promoting stability of community and ecosystem productivity. Correspondingly, it can be inferred that changes in community traits, especially species composition, may fundamentally affect WUE (De Boeck et al., 2006). Nevertheless, few attempts (Niu et al., 2011; Li et al., 2016) have been made to compare WUE response, especially WUE_c to community structure and composition change. In the Qinghai–Tibetan Plateau, the mountain upheaval has caused a distinct elevation gradient and blocking effect, producing a drastic variation in species composition and a varied community structure. To the best of our knowledge, no attempt has been made to analyze the relationships between community traits and different scales of WUE in this region. Reducing this uncertainty would help local pasture and water resources management in accurate predictions and adaptation to climate change.

The overall objective of this study was to quantify the seasonal and site-to-site variations in the WUE_e and WUE_c in three typical Qinghai–Tibetan Plateau ecosystems (i.e., alpine steppe, alpine meadow, and alpine swamp). In particular, we were interested in the underlying regulation mechanism of the less-reported WUE_c and the relationship between alpine community traits variation and WUE. The specific objectives of our study were as follows: (1) to compare the carbon assimilation and ET components, and WUE_e and WUE_c among the three alpine ecosystems; (2) to improve the current understanding of driving factors on seasonal variation of WUE_e and WUE_c in alpine ecosystems; and (3) to test our hypothesis that the community composition plays a special role in regulating WUE across alpine ecosystems.

MATERIALS AND METHODS

Study Sites

Observation and field survey were conducted at three alpine sites located in the Qinghai–Tibetan Plateau. The community of these sites represents the most prevalent vegetation types of the Qinghai–Tibetan Plateau and exhibits a clear water availability gradient (**Figure 1**). They include an alpine steppe located in Maduo County, dominated by *Stipa purpurea*, the soil of this community is frigid calcic soil; an alpine meadow located in Batang, Yushu County, dominated by *Kobresia humilis*, the soil of this community is felty soil; and an alpine swamp located in Longbao Nature Reserve, Yushu County, dominated by *Kobresia littledalei*, the soil of this community is bog soil. The land use of the three sites was free grazing and all the sites are located in Plateau mountain climate areas. The three sites were fully instrumented to enable the state-of-the-art measurements of vapor and CO₂ fluxes. The geographical location, elevation, dominant species, and soil physicochemical properties of the three sites are listed in **Table 1**.

Observation of Fluxes, Meteorological Parameters, and Leaf Area Index

The device configuration was kept consistent across the three sites; each observation site had a 4-m high micrometeorological observation tower, with the open eddy covariance system (OPEC) installed at 2.5 m height. The OPEC system is mainly used for observation of turbulent flux and includes a three-dimensional ultrasonic anemometer (CSAT3; Campbell, CA, United States) and infrared gas analyzer (EC150; Campbell, CA, United States) to determine the three-dimensional wind speed and the density

of CO₂ and H₂O in the atmosphere. The data collector (CR3000; Campbell, CA, United States) had a sampling frequency of 10 Hz and was responsible for the collection and calculation of the average flux of 30 min for storage. Observation equipment of the aboveground micrometeorological elements includes NR01 four-component net radiation sensor, HMP155a temperature and humidity sensor, and NR-LITE net radiation sensor. The soil water content (SWC) was recorded using an underground CS616 soil moisture sensor, and the soil temperature was recorded using a 109SS soil temperature sensor.

ChinaFLUX has developed a series of methods for processing flux data including flux calculation, gap-filling, partitioning, and quality assurance methods (Yu et al., 2006; Han et al., 2020). In this study, the flux data were filtered and corrected using the standard ChinaFLUX process, which involves coordinate rotation, Webb–Pearman–Leuning correction (Webb et al., 2010), outlier filtering, nighttime CO₂ flux correction using site-specific thresholds of friction velocity (u^*), and gap-filling (Reichstein et al., 2005). The net ecosystem productivity (NEP) values were obtained based on the fully interpolated 30-min data. NEP was partitioned into respiration (Re) and GPP using the functional relationship between nighttime fluxes and soil temperature. The computations were performed using MATLAB software (Math Works Inc., Natick, MA, United States).

At each site, although LAI was measured by harvesting the aboveground biomass at the peak of the growing season (August), these data were not continuous. To configure the integrated LAI dataset with relatively fine-time resolution, normalized difference vegetation index (NDVI) data (8-day average at 1-km resolution¹) were adopted for the estimation of LAI.

¹<https://ladsweb.modaps.eosdis.nasa.gov/>

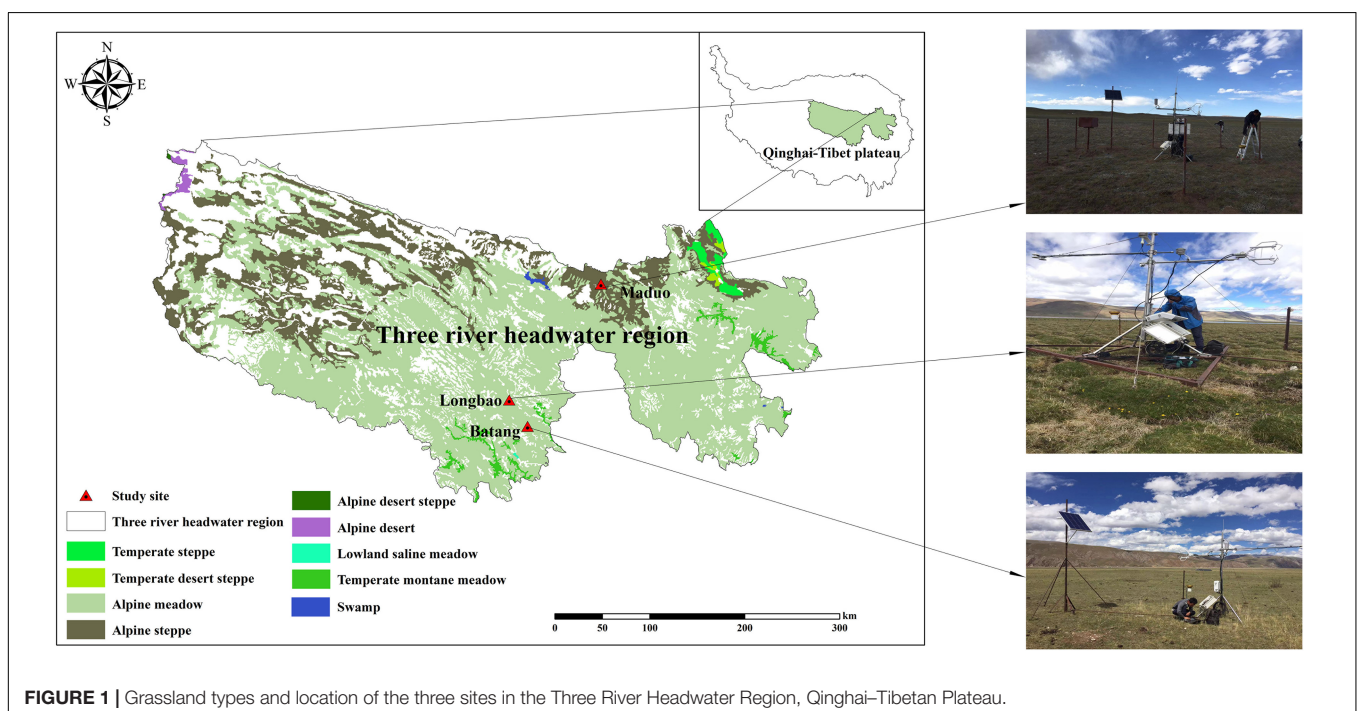


TABLE 1 | Site information and community characteristics of the three grassland ecosystems on the Qinghai–Tibetan Plateau.

Site	Alpine steppe	Alpine meadow	Alpine swamp
Location	35°6'12"N, 97°58'40"E	32°50'49"N, 96°57'3"E	33°12'14"N, 96°33'7"E
Elevation (m)	4316	3980	4220
Mean precipitation (mm)	392.99	578.78	573.73
Mean temperature(°C)	-3.36	2.12	0.74
Soil type	Frigid calcic soils	Felty soils	Bog soils
Dominant species	<i>Stipa purpurea</i>	<i>Kobresia humilis</i>	<i>Kobresia littledalei</i>
Cover (%)	66.67 ± 3.33a	99.33 ± 0.67b	100.00 ± 0.00b
Height (cm)	20.3 ± 0.57a	46.00 ± 12.17b	21.67 ± 1.67a
Maximum LAI (m ² m ⁻²)	0.6	2.8	2.5
Aboveground biomass (g m ⁻²)	66.29 ± 11.22a	275.92 ± 25.36b	313.28 ± 25.41b
Total biomass (kg m ⁻²)	2.00 ± 0.23a	3.75 ± 0.30b	19.88 ± 4.12c
Gramineous biomass proportion (%)	62.41 ± 12.50a	42.08 ± 12.32b	0.00 ± 0.00c
Cyperaceae biomass proportion (%)	20.55 ± 9.96a	17.96 ± 9.65a	83.00 ± 6.74b
Species richness	5.33 ± 0.67a	15.33 ± 0.88b	10.67 ± 0.67c
Shannon–Wiener index	1.31 ± 0.11a	2.52 ± 0.06b	2.02 ± 0.18c

Mean ± SD; different letters in the same row indicate significant difference at $p < 0.05$.

TABLE 2 | Sum of daily GPP, ET, T, and LAI during each growing season and annual WUE at the three Qinghai–Tibetan Plateau ecosystems.

Site	Year	Precipitation (mm)	LAI sum	GPP (gC m ⁻²)	ET (kg H ₂ O m ⁻²)	T (kg H ₂ O m ⁻²)	WUEe (gC kg ⁻¹ H ₂ O)	WUEc (gC kg ⁻¹ H ₂ O)
Alpine steppe	2016	388.73	67.13	320.54	233.60	38.35	1.37	8.36
	2017	383.62	74.85	379.57	254.75	37.35	1.49	10.16
	2018	530.17	83.04	369.83	275.35	44.68	1.34	8.28
Alpine meadow	2017	627.97	294.79	812.94	549.55	337.48	1.48	2.41
	2018	629.19	287.94	866.13	481.12	345.01	1.80	2.51
Alpine swamp	2017	596.12	239.30	1289.71	596.21	248.48	2.16	5.19
	2018	614.60	234.31	1240.47	574.28	239.44	2.16	5.18

Evapotranspiration Partitioning and the Shuttleworth–Wallace Model

The S–W model, developed based on the Penman–Monteith model, is widely used in the study of ET in ecosystems, such as farmland, grassland, and forest. This model considers that the latent heat flux from E and the T are two independent sources. In this model, methods for estimating soil surface resistance (R_{SS}) and canopy resistance (R_C) are usually study specific. In this study, R_{SS} was calculated with an empirical function of surface SWC (Mahfouf and Noilhan, 2015) as follows:

$$R_{SS} = b_1 \left(\frac{\theta_S}{\theta} \right)^{b_2} + b_3 \quad (1)$$

where θ is the average volumetric soil moisture content between 0 and 10 cm, θ_S is the saturated water content in the surface soil, and b_1 , b_2 , and b_3 are empirical constants. R_C was calculated with the modified Ball–Berry model (Ball et al., 1987) as follows:

$$R_C = \frac{1}{g_0 + a_1 \left(\frac{\theta - \theta_w}{\theta_f - \theta_w} \right) P_n h_s / C_s} \quad (2)$$

where g_0 and a_1 are empirical parameters; θ_f and θ_w are ground soil capacity and wilting points, respectively; P_n is the

photosynthetic rate; h_s is the leaf surface relative humidity; and C_s is the leaf surface CO₂ concentration.

In Equations 1, 2, five parameters, namely, b_1 , b_2 , b_3 , g_0 , and a_1 , are estimated using the Monte Carlo method (Hu et al., 2009), and the estimation method of other resistances (i.e., air resistance from blade surface to canopy, air resistance from soil surface to canopy, and air resistance from canopy to reference height) is consistent with Shuttleworth and Wallace (2010).

Survey of Community Characteristics

Every year, at the peak of the growing season (August), a randomized quadrat method with a total of 15 survey quadrats (1 m × 1 m) was applied in each site. At each site, we randomly installed 5 replicate biomass harvest quadrats and 10 species survey quadrats. The percentage cover of each species and the entire vegetation cover were visually estimated in the biomass harvest quadrats. In addition, the harvest quadrats were used for destructive sampling to determine the community characteristics, including aboveground and belowground biomass, and soil properties. The aboveground biomass of each species in each destructive sampling plot was clipped to ground level and the living fraction was separated. The 0- to 30-cm belowground biomass was sampled using the root drill method, as described by Fan et al. (2008). All the aboveground biomass and belowground

biomass were oven-dried at 70°C for 48 h and then weighed. In each species survey quadrat, the species composition, percentage cover, and average height of each species were recorded.

The following species diversity indices were calculated as follows:

- (1) Species richness, S , was calculated as the total number of species appeared in observation site; and
- (2) The Shannon–Wiener index (H') (Shannon, 1948) was calculated as follows:

$$H' = - \sum P_i \ln P_i \quad (3)$$

where P_i is the importance value (IV) of species i ; and IV (Li et al., 2019a) was calculated as follows:

$$IV = (\text{relative height} + \text{relative coverage} + \text{relative frequency})/3 \quad (4)$$

Ecosystem and Canopy Water Use Efficiency Calculation

In this study, the WUE_e was defined as the ratio between GPP and ET (Li et al., 2016) as follows:

$$\text{WUE}_e = \frac{\text{GPP}}{\text{ET}} \quad (5)$$

The WUE_c was defined as the ratio of GPP to T (Niu et al., 2011) as follows:

$$\text{WUE}_c = \frac{\text{GPP}}{T} \quad (6)$$

where ET is obtained by the eddy covariance system, T is obtained by the S-W model, and GPP is obtained as follows (Li et al., 2019b):

$$\text{GPP} = -\text{NEP} + \text{Re} \quad (7)$$

The NEP can be obtained from the eddy covariance system as nighttime ecosystem Re was observed by the eddy covariance system and daytime Re was calculated using the functional relationship between nighttime fluxes and soil temperature (Reichstein et al., 2005).

Statistical Analysis

One-way ANOVA with Tukey's honestly significant difference (HSD) test was used to analyze the differences in the community characteristics of the three alpine sites. The paired t -test was used to compare the seasonal dynamics of ecosystem H_2O and CO_2 exchange as well as WUE_c and WUE_e of the three sites. Linear regression analysis and root mean square error (RMSE) were applied to examine the consistency between ET measured by the eddy covariance system and that modeled by the S-W model. Linear regression analysis was used to evaluate the relationships between T/ET, LAI, GPP, ET, T, ecosystem microclimate factors, and WUE_e or WUE_c. Exponential regression analysis was applied to evaluate the relationships between T/ET, LAI, and WUE_c. All statistical analyses were performed using SPSS version 12.0 (IBM, Armonk, NY, United States).

RESULTS

Microclimate and Community Characteristics at the Three Sites

Seasonal air temperature at the three ecosystems showed a similar one-peak pattern. Both the maximum and minimum air temperatures occurred at the alpine steppe site that is located at a higher altitude (Figure 2). The SWC at the alpine swamp site remained relatively high throughout the growing seasons, whereas SWC at the alpine steppe site was more variable. The rainfall at the alpine steppe site was much lower than that at the other two sites. The maximum LAI commonly occurred in July (Figure 2D).

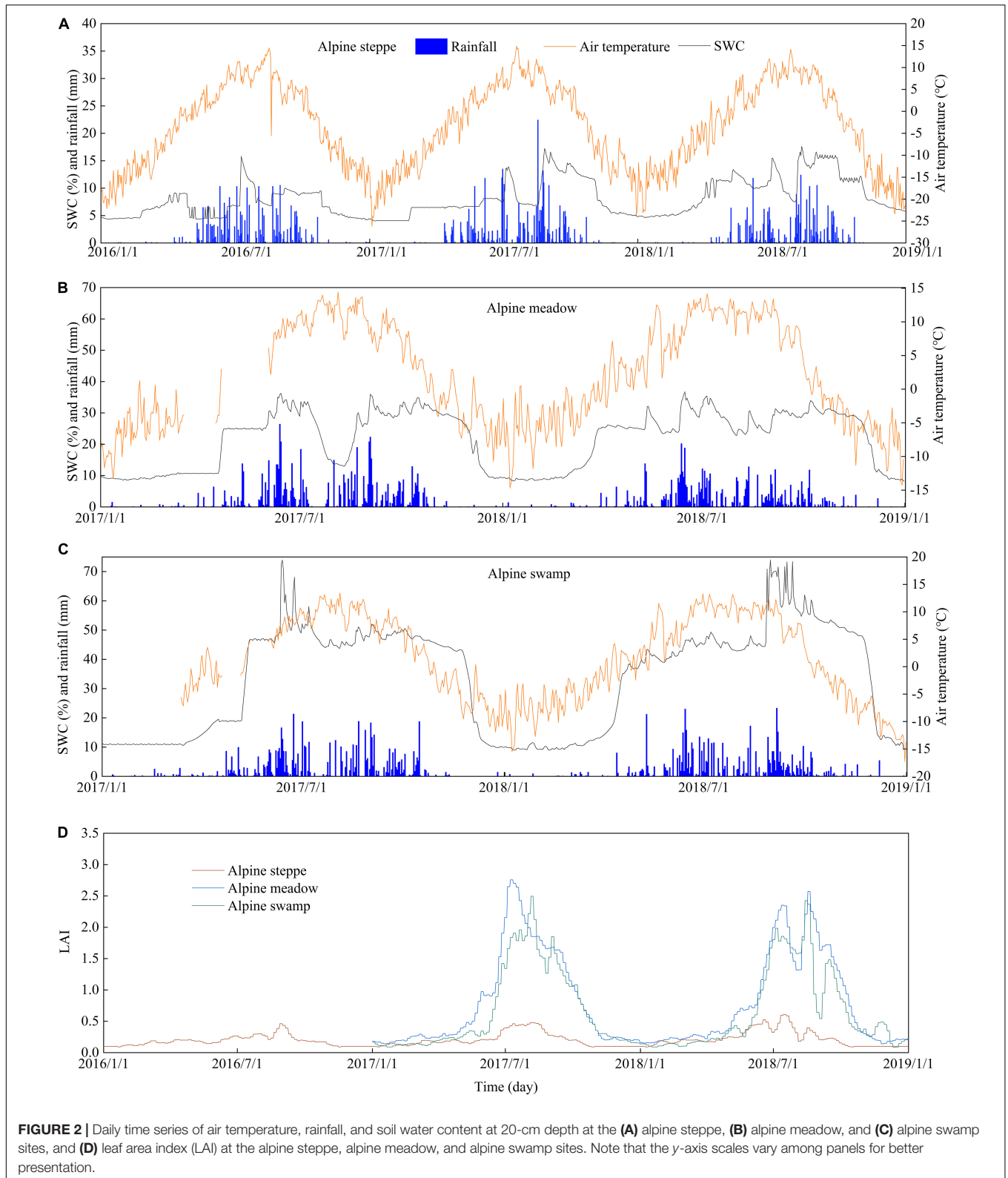
The community structure and species composition were clearly different between sites. The dominant species is *S. purpurea* at the alpine steppe site, and its gramineous biomass portion (about 62.41%) was consistently significantly higher than that of alpine meadow and alpine swamp sites ($p < 0.05$), for which the dominant species were the Cyperaceae family (*K. humilis* and *K. littledalei*, respectively). The species diversity was highest in the alpine meadow with H' reaching 2.52. Similar to H' , the species richness was low in the alpine steppe (Table 1).

Seasonal Variations in Gross Primary Productivity and the Components of Evapotranspiration at the Three Sites

Seasonal variations in net ecosystem exchange (NEE), Re , GPP, and ET at the three sites are shown in Figure 3. NEE refers to the change in ecosystem carbon storage, which mainly reflects the carbon budget of the ecosystem from the perspective of flux observation and has the same physical significance as NEP under certain assumptions. The difference between NEP and NEE is that positive NEP indicates a carbon absorption ecosystem, while when NEE is negative, it indicates the presence of a carbon absorption process. In this study, the NEE showed an apparent U-shaped curve, low in the active periods and high in the early and the late growing season (Figure 3A). However, NEE varied with two or more peaks during each growing season at alpine steppe, and is likely to be caused by summer drought, which is supported by rain and SWC records. The Re typically showed a one-peak seasonal pattern, with the peak occurring in July (Figure 3C). The GPP showed a one-peak pattern similar to Re at the three alpine sites, except for the alpine steppe in 2016 (Figure 3C). The ET showed similar patterns to GPP at the three ecosystems (Figure 3D), suggesting a coupling between carbon and vapor flux.

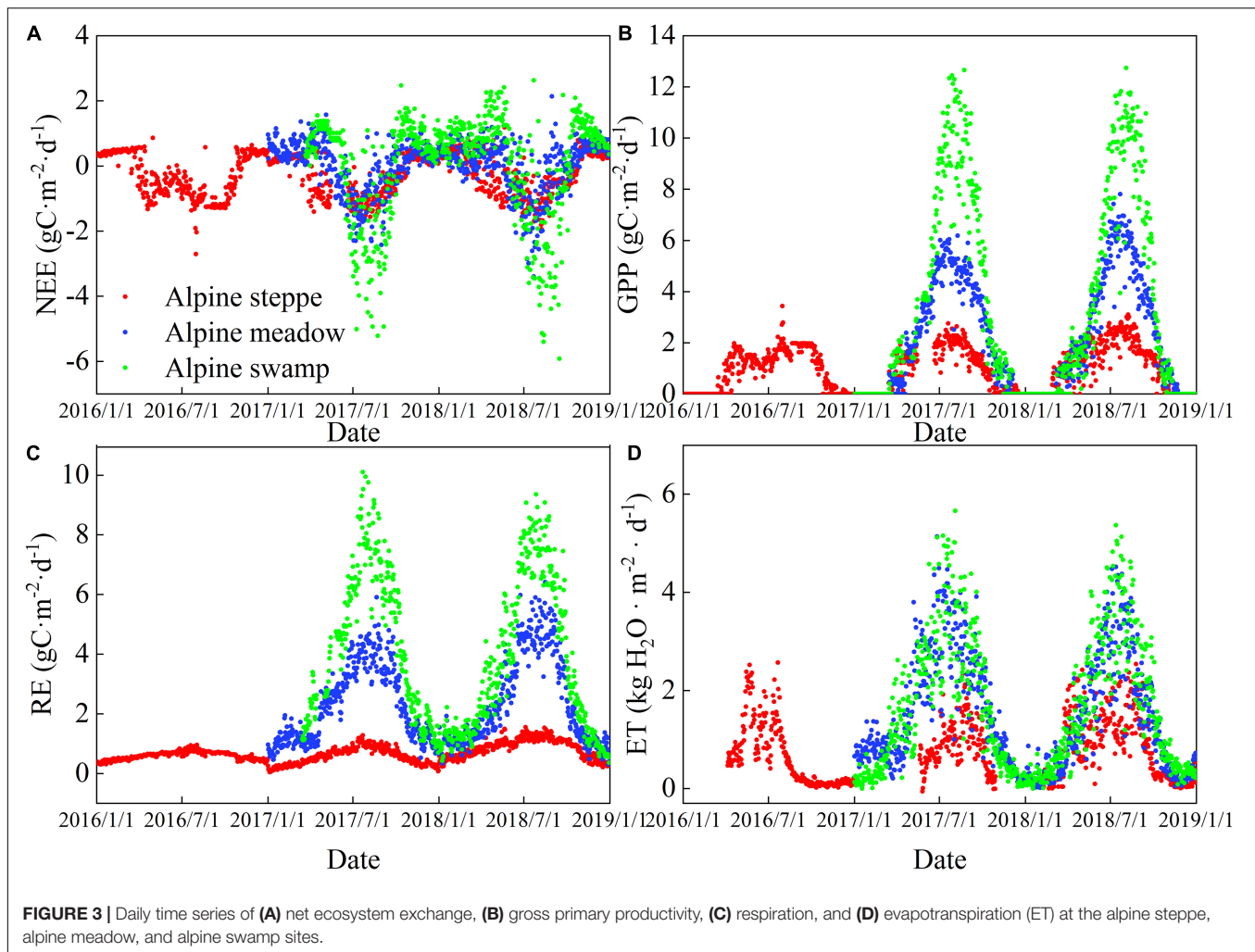
Seasonal Variations in Canopy Transpiration/Evapotranspiration and Canopy Transpiration Simulated With the Shuttleworth–Wallace Model at the Three Sites

As shown in Figure 4A, the S-W model could successfully estimate vapor losses for the alpine ecosystems (all $R^2 = 0.80$, RMSE = 0.66), and the RMSE was slightly lower in the alpine



meadow. This suggests that the model performs best in mild ecosystems and acceptably in dry steppe and humid swamps. The modeled and measured ET was simulated at the three

sites, and the fitting curves were mostly distributed near the 1:1 straight line (Figure 4A). Although the R^2 values varied among the sites, when taking the three sites as a whole, the change



of measured ET explained 80% of the modeled ET, suggesting that the S-W model can be successfully applied in most of the alpine ecosystems.

The seasonal dynamics of T/ET and the comparison of daily T/ET are shown in **Figures 4B,C**, respectively. Seasonal variation of T/ET was one-peak pattern at the three alpine sites. The multiyear average daily T/ET values were 0.13, 0.49, and 0.32 in alpine steppe, alpine meadow, and alpine swamp, respectively (**Figure 4C**). The T showed one-peak pattern at the three alpine sites (**Figure 4D**).

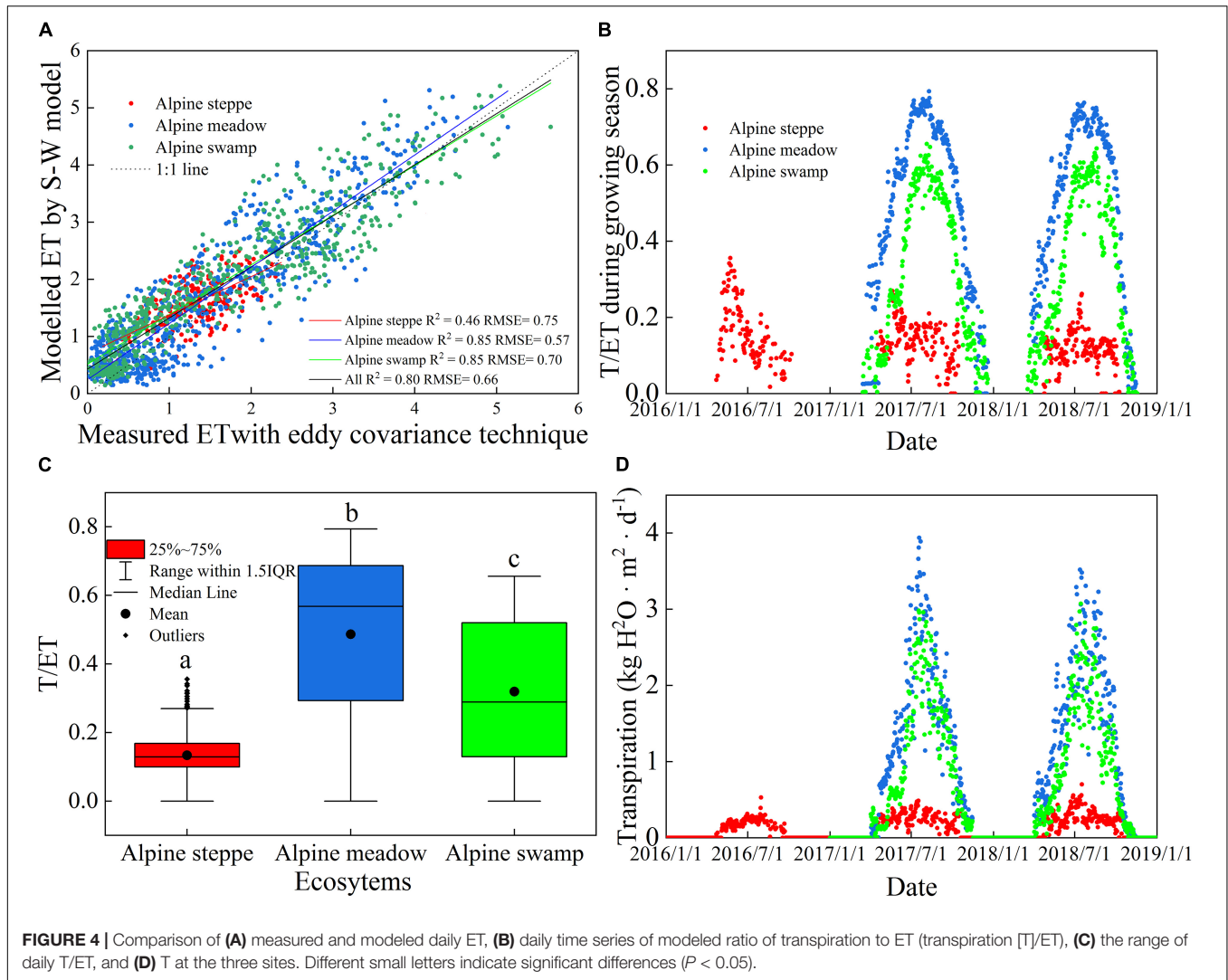
Comparison of Ecosystem Water Use Efficiency and Canopy Water Use Efficiency at the Three Sites

For all ecosystems, WUE_c was lower in the peak growing periods and higher in the early and late growing season (**Figure 5B**), which is almost opposite to the WUE_e trends (**Figure 5A**). However, the trends of alpine steppe were much less consistent than those of the other two ecosystems, which may be attributed to the harsh and arid environmental conditions that frequently cause drought and frost damage to the vegetation.

The mean daily WUE_c and WUE_e variation values between years were relatively low at a single site ($p > 0.05$; **Figures 5C,D**); however, the WUE_c values were significantly different between the different sites ($p < 0.05$), while the WUE_e values were not ($p < 0.05$). The mean daily WUE_c values were 7.28, 2.76, and 5.75 g C kg⁻¹ H₂O in alpine steppe, alpine meadow, and alpine swamp, respectively. The mean daily WUE_e values were 1.65, 1.61, and 2.24 g C kg⁻¹ H₂O in these three ecosystems, respectively.

Daily Variations in Water Use Efficiency and Its Driving Factors

The T/ET and LAI values were often significantly correlated with the WUE_e and WUE_c values (**Figure 6**); WUE_e exhibited positive linear relations with T/ET or LAI in each of the three ecosystems and all three together, whereas WUE_c exhibited exponential relations with T/ET or LAI in alpine meadow, alpine swamp, and all three ecosystems together. However, the alpine steppe was a unique case that showed lower R^2 , which might be attributed to the frequent meteorological disturbance



that restricted the growth of local vegetation in the alpine steppe area.

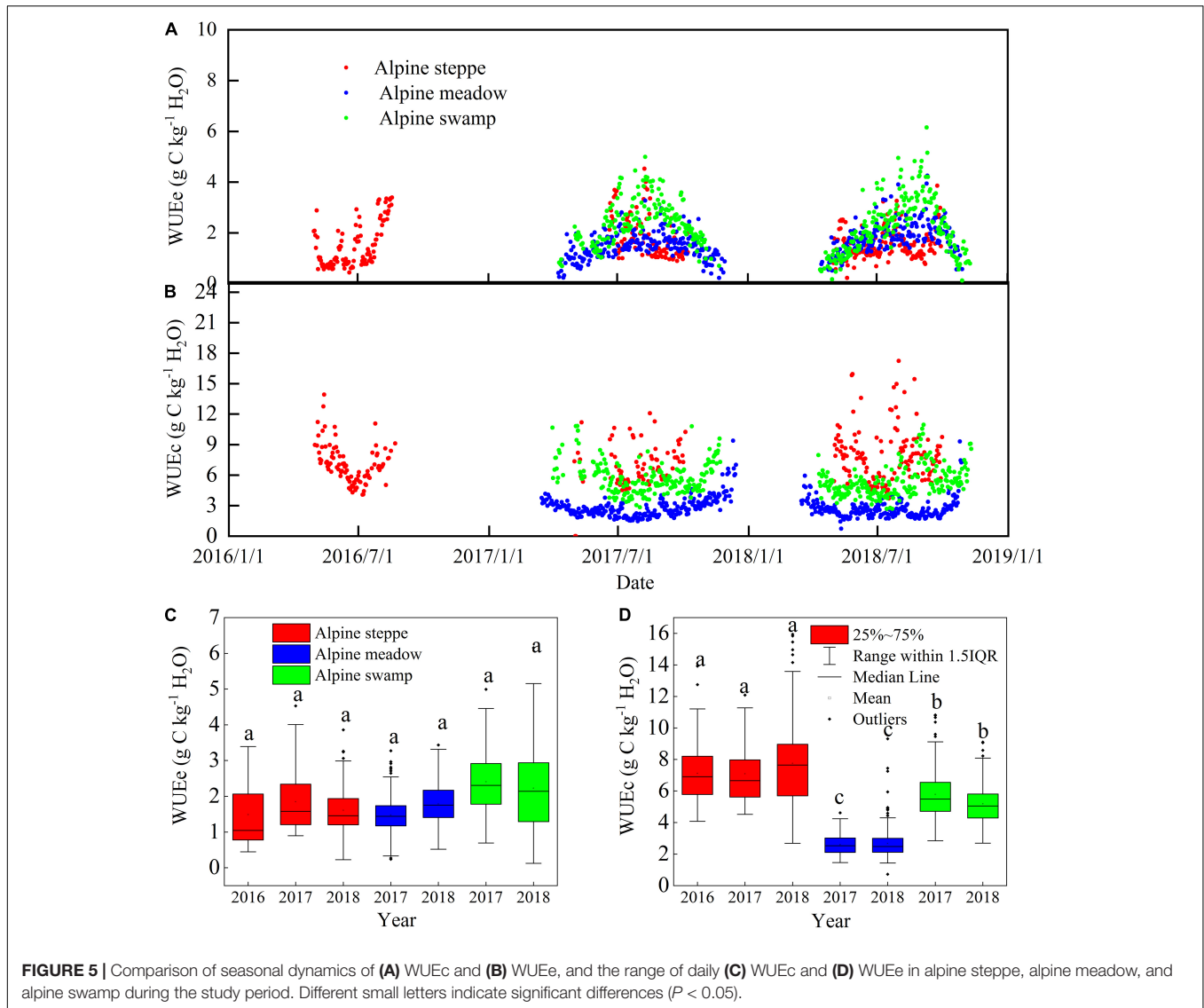
Inter-Annual and Inter-Ecosystem Variations in Water Use Efficiency and Its Driving Factors

Our results showed that gramineous biomass proportion variation across the three alpine ecosystems explained 99% of the WUE_e change (Figure 7B, $p < 0.001$). Besides, Cyperaceae biomass proportion changes showed a significant positive relationship with WUE_e across the three alpine ecosystems. Unlike WUE_e, no significant relationships were detected between community biomass characteristics and WUE_c. However, community species diversity exhibited strong correlations with WUE_c, the species richness change among the alpine ecosystems was negatively related to WUE_c (Figure 7C, $p < 0.01$), and the H' change explained 99% of the WUE_c variation (Figure 7D, $p < 0.001$).

DISCUSSION

Comparison of the Ecosystem Water Use Efficiency and Canopy Water Use Efficiency in the Three Alpine Ecosystems

Water use efficiency has been intensively analyzed at the leaf scale through the chamber and isotopic methods and at regional scales through modeling within remotely sensed data (Béziat et al., 2013; Kool et al., 2014; Liu W. et al., 2021). In this study, the overall mean observed that WUE_e varied relatively lesser among the three alpine ecosystems and between years (Figure 4C; Table 2). The mean daily WUE_e in alpine steppe and alpine meadow is slightly higher than the results obtained in a dry alpine steppe ($0.31\text{--}1.38 \text{ g C kg}^{-1} \text{ H}_2\text{O}$) by Hu et al. (2008), when compared with the growing season monthly WUE_e ($0.03\text{--}1.64 \text{ g C kg}^{-1} \text{ H}_2\text{O}$) of FLUXNET sites (Law et al., 2008). The yearly WUE_e of the alpine swamp was compared with the WUE_e in peak growing season of various land use of temperate steppe of Inner Mongolia



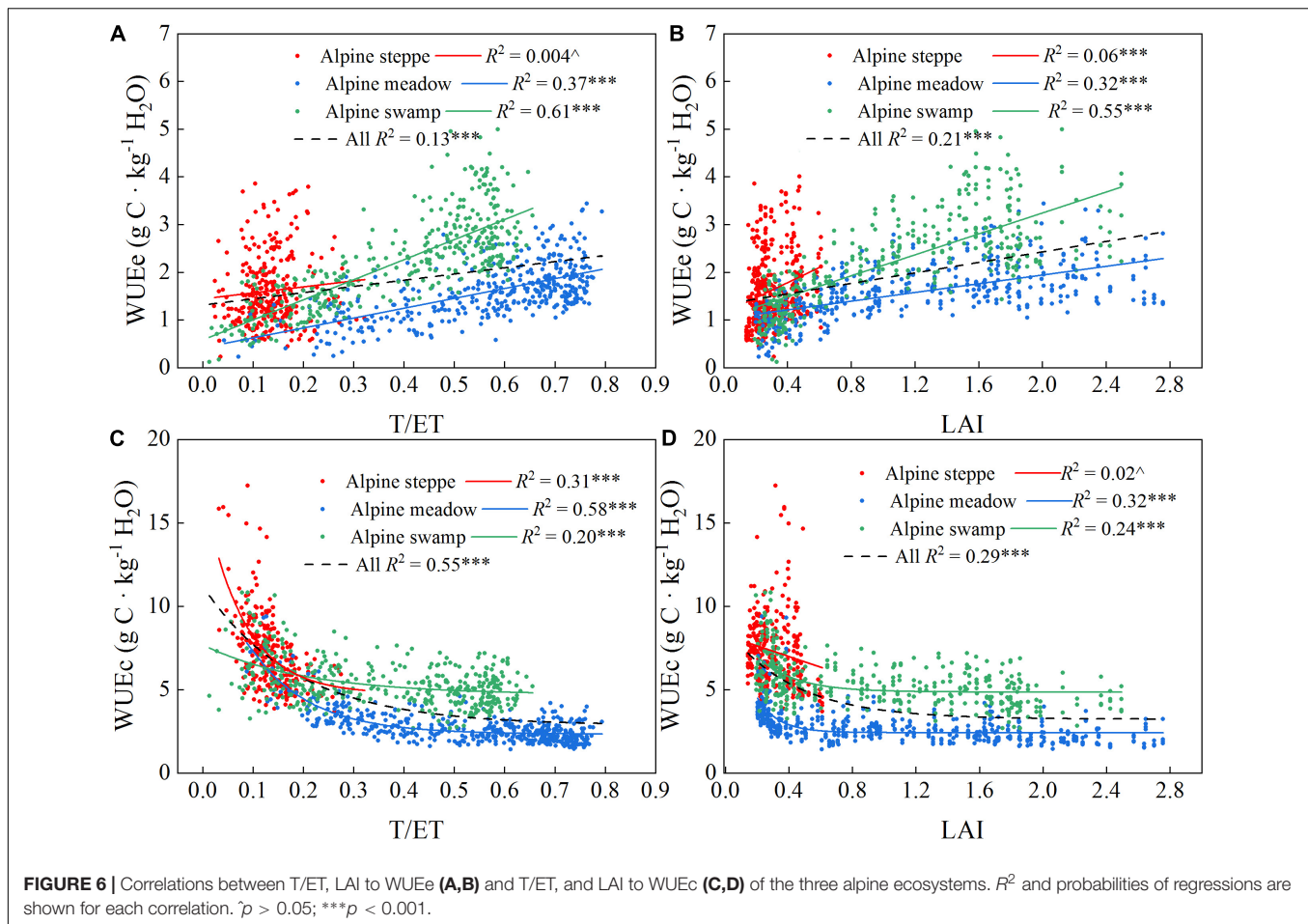
(more than $2 \text{ g C kg}^{-1} \text{ H}_2\text{O}$) (Niu et al., 2011; Li et al., 2016), which indicates that alpine swamp had a higher ecosystem WUE, perhaps implying that increased water availability may improve the WUE in alpine ecosystems. This could be attributed to the GPP increase response to water availability being more sensitive than the response to ET, which was also concluded in a temperate grassland manipulative experiment (Niu et al., 2011).

The variation range of overall mean daily WUEc of the three alpine ecosystems was larger than that of WUEe (Figure 4D) and, unlike WUEe, the WUEc values of the three sites were significantly different from each other. However, the lower site of alpine meadow (Figure 4C) was compared with that of temperate steppe ($2.1\text{--}4.6 \text{ g C kg}^{-1} \text{ H}_2\text{O}$) (Niu et al., 2011); WUEc of alpine steppe (Figure 4D) was nearly two times higher than other reported temperate ecosystems and was even higher than the monthly results of peak growing season ($4.9 \text{ g C kg}^{-1} \text{ H}_2\text{O}$) (Li et al., 2016). Besides, the moisture limits, which commonly occurred in the arid or

semi-arid steppe area, accordingly caused ET suppression (Cienciala et al., 1994; Zhu et al., 2016). This may also be attributed to the high elevation of these two ecosystems (both higher than $4,000 \text{ m}$; Table 1), which are accompanied by strong photosynthetically active radiation at a low temperature (Figure 1). Correspondingly, the improved GPP and suppressed T jointly promoted WUEc.

Comparison of the Regulation Mechanism Between Seasonal Variation of Ecosystem Water Use Efficiency and Canopy Water Use Efficiency

Few studies have examined the alpine ecosystem WUE response to changing environmental factors, especially for WUEc. It is generally understood that control of WUE varies with the scale of analysis (Hu et al., 2008; Niu et al., 2011). Thereby, limited understanding of the mechanisms controlling WUEc makes it

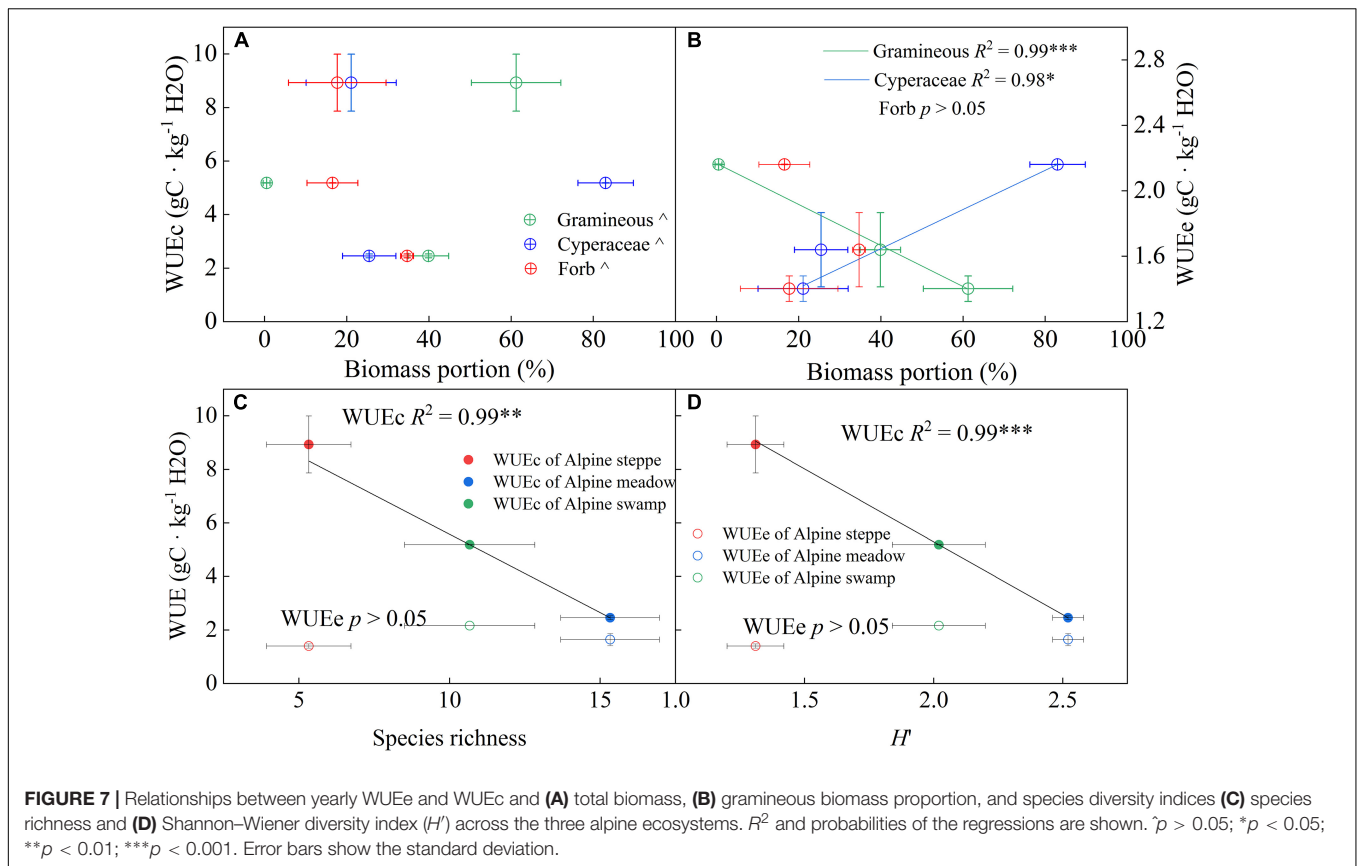


more difficult to help Tibetan people to mitigate and adapt to the rapid regional change. As the data and analysis showed in this research, the LAI increases were significantly positively related to WUEe at all three sites (Figure 6D, $p < 0.001$), which is consistent with a temperate case study (Hu et al., 2008). However, the T/ET, which is commonly positively related to LAI change, was assumed to have a similar relationship with WUEe. This is the case for alpine meadow and swamp (Figure 6A, $p < 0.001$), but the positive relationship was not significant in the alpine steppe, which may be caused by T/ET coupling variation and the metrological and climatological disasters that frequently occur in the alpine steppe area, resulting in severe disturbance to WUE. The T/ET and LAI consistently showed exponential relationships with WUEc (Figures 6C,D), which suggests that the higher WUEc occurred when the plant began to grow. At this early growth stage, the photosynthetic conditions show younger leaf tissue with more active enzymes (Nath et al., 2013; Panda and Sarkar, 2013), and the leaves generally do not shade each other. As the plants gradually grew toward the maximum leaf coverage limitation for each community, the light competition and shading effect increased in the community, and consequently, the GPP growth would not catch up with the T growth and the rapidly decreased WUEc of early spring showed a gentler decrease (Figure 6C). This would then present as a

WUEc decrease to a stable lower level when LAI had sufficiently increased (Figure 6D).

Effect of Community Traits on the Inter-Annual and Inter-Ecosystem Variation in Ecosystem Water Use Efficiency and Canopy Water Use Efficiency

Leaf area index, T/ET, and the components of ET are common and critical regulation factors of WUEe (Hu et al., 2008; Li et al., 2016). The community characteristics, including species composition and diversity, have been reported to be closely related to LAI or carbon and vapor exchange (Dong et al., 2015; Li et al., 2015; Wei et al., 2015). The plant community is usually constituted with many coexisting species that may differ in water use strategy (Niu et al., 2011; Ens et al., 2015), thus appearing as considerable differences in WUE in leaf scale of species (Cernusak et al., 2010). The water use characteristics of various species that grow in the Qinghai–Tibetan Plateau were especially diversiform (Wang et al., 2004) because of their great habitat diversity. Proper plant functional group dividing methods would unexpectedly explain WUE variation across ecosystems (Figures 7A, B). The results shown in Figure 7B support this hypothesis as



the gramineous biomass proportion was significantly negatively related to WUEe ($p < 0.001$). This may be attributed to the stronger drought-endurance of gramineous species (Panda and Sarkar, 2013; Hamilton et al., 2015; Zhang et al., 2017). A higher gramineous biomass proportion may, therefore, suggest a dry environment, which implied a lower WUEe and T/ET.

The species diversity indices were commonly negatively correlated with WUEc across alpine ecosystems (Figures 7C,D). We supposed that, in the community with complex synusia, the species with higher synusia occupy the best light conditions (Zhang L. et al., 2014), and usually obtained the higher WUE at the leaf scale, thus the species in lower synusia could only use the residue light resources. In a non-water limited situation, because abundant resources compensate for a lack of resources (Lassaletta et al., 2014), the GPP of lower synusia would decrease more than T, thereby the lower WUEc of these supplementary species in low synusia would suppress the WUE of the entire canopy. In contrast, in dry or other extreme environments, the community could only maintain simple synusia and few dominant species, and the vegetation cover would be too low to cause light competition between species, which may explain the high WUEc in barren ecosystems such as alpine steppe.

Limitation and Outlook

There were three observation sites of typical ecosystems in this unique high-altitude region involved in this research, which

limited the accurate understanding and creditable analysis across varied ecosystems within large spatial differences. For instance, the positive correlation trends observed between WUEe and LAI (Figure 6B) might be subject to amendment, if more different ecosystems had been included in the analysis, since LAI of more humid ecosystems might largely exceed the present maximum LAI recorded in the alpine meadow. Since the linear positive relationship probably has a threshold value, it could bend the trend. Besides, there is still uncertainty in obtaining the accurate daytime Re (Tcherkez et al., 2017), and the approach applied in our research has been argued to overestimate GPP in temperate forests (Wehr et al., 2016), which might hamper the accurate calculation of WUE.

Our findings were concentrated on revealing the regulation between community composition and structure with WUE in ecosystem and canopy scale, which could promote the understanding and accurate access to WUE modified by human activities and climate-driven community change. However, they lack an insightful understanding of the physiological mechanisms that drive the variation in WUEc across these varied alpine ecosystems. In addition, it should be stressed out that our observed phenomenon (e.g., Figure 7B) might only be applied to assess WUE in a limited area (alpine grasslands of Tibetan Plateau) or other grasslands dominated by gramineous and Cyperaceae plants, where the ecosystems commonly consist of two clearly divided function groups that largely diverge in water use strategy.

In our mind, a crucial direction for future progress will be used to determine the accurate regulation trends between community composition and structure and WUE, which covers more humid and arid ecosystems and observation sites distributed on the Qinghai–Tibetan plateau. With a deeper understanding of the suitable applied spatial range to these trends, the question of how to obtain a more accurate WUE variation trend and its suitable applied spatial range should be rephrased as follows: Does the composition and structure change across spatial distance or time series present a consistent regulation? Can the obtained trends be successfully applied to a more extreme environment and be mechanically explained by physiological factors? Once the mechanistic scaling of the community composition and structure effects on WUE response to human activities and climate change is successfully established, such a model would inform dynamic Earth-system models to calculate the effects of changing community on ecosystem atmosphere carbon and water exchange, which in turn promotes the accurate prediction on future water and carbon balance of the Qinghai–Tibetan Plateau.

CONCLUSION

Combining the continuously observed eddy covariance system data with the ET partitioning ability of the S-W model, this study was divided into specific components of ecohydrological processes in the three typical alpine ecosystems. Our results showed that the mean yearly GPP was 356.65, 839.54, and 1265.09 g C m⁻² in the alpine steppe, alpine meadow, and alpine swamp ecosystems, respectively; the mean yearly ET was 254.57, 515.34, and 585.25 kg H₂O m⁻² in the three typical ecosystems, respectively; the yearly WUE_e was 1.40, 1.63, and 2.16 g C kg⁻¹ H₂O, in the three typical ecosystems, respectively, and the yearly WUE_c was 8.93, 2.46, and 5.19 g C kg⁻¹ H₂O in the three typical ecosystems, respectively. A nonlinear effect in WUE_c was regulated by LAI and T/ET in alpine ecosystems. Our results

REFERENCES

- Ali, S., Xu, Y., Ma, X., Ahmad, I., Kamran, M., Dong, Z., et al. (2017). Planting patterns and deficit irrigation strategies to improve wheat production and water use efficiency under simulated rainfall conditions. *Front. Plant Sci.* 8:1408. doi: 10.3389/fpls.2017.01408
- Ball, J. T., Woodrow, I. E., and Berry, J. A. (1987). "A model predicting stomatal conductance and its contribution to the control of photosynthesis under different environmental conditions," in *Progress in Photosynthesis Research*, ed. I. Biggens (Dordrecht: Springer Netherlands), 221–224. doi: 10.1016/j.envpol.2006.04.007
- Ball, J. E., Weng, E., and Luo, Y. (2015). Ecohydrological responses to multifactor global change in a tallgrass prairie: a modeling analysis. *J. Geophys. Res. Biogeosci.* 115, 701–719. doi: 10.1029/2009JG001120
- Béziat, P., Rivalland, V., Tallec, T., Jarosz, N., Boulet, G., Gentine, P., et al. (2013). Evaluation of a simple approach for crop evapotranspiration partitioning and analysis of the water budget distribution for several crop species. *Agric. For. Meteorol.* 177, 46–56.
- Bremer, D. J., Auen, L. M., Ham, J. M., and Owensby, C. E. (2001). Evapotranspiration in a prairie ecosystem. *Agron. J.* 93, 338–348. doi: 10.2134/agronj2001.932338x

also imply that changes in community composition and structure across alpine ecosystems may have a primary impact on WUE_c. Our findings indicate that there is a fundamental divergence in driving factors and regulation mechanisms between WUE_e and WUE_c in the alpine ecosystems.

DATA AVAILABILITY STATEMENT

The original contributions presented in the study are included in the article/supplementary material, further inquiries can be directed to the corresponding authors.

AUTHOR CONTRIBUTIONS

YL and ZH provided the idea for this research and prepared the manuscript. YL and QS contributed to the experimental design. YL and XZ collected the data in the study site. ZC and XZ contributed to the data analysis and figure-making. JD and YZ contributed to the revision of this manuscript. All authors contributed to the article and approved the submitted version.

FUNDING

This research was jointly funded by the National Key Research and Development Program of China (2017YFA0604801 and 2017YFC0506500), the National Natural Science Foundation of China (41971276), and the Second Tibetan Plateau Scientific Expedition and Research Program (2019QZKK0608).

ACKNOWLEDGMENTS

The authors thank Jiyuan Liu and Renhua Zhang for designing the systematic distribution of observation sites.

- Cernusak, L. A., Aranda, J., Marshall, J. D., and Winter, K. (2010). Large variation in whole-plant water-use efficiency among tropical tree species. *New Phytol.* 173, 294–305. doi: 10.1111/j.1469-8137.2006.01913.x
- Cienciala, E., Lindroth, A., Cermak, J., and Haellgren, J. E. (1994). The effects of water availability on transpiration, water potential and growth of *Picea abies* during a growing season. *J. Hydrol.* 155, 753–764. doi: 10.1093/treephys/19.9.551
- De Boeck, H. J., Lemmens, C. M. H. M., Bossuyt, H., Malchair, S., Carnol, M., Merckx, R., et al. (2006). How do climate warming and plant species richness affect water use in experimental grasslands? *Plant Soil* 288, 249–261. doi: 10.1007/s11104-006-9112-5
- Dong, J. W., Xiao, X. M., Wagle, P., Zhang, G. L., Zhou, Y. T., Jin, C., et al. (2015). Comparison of four EVI-based models for estimating gross primary production of maize and soybean croplands and tallgrass prairie under severe drought. *Remote Sensing Environ.* 162, 154–168. doi: 10.1016/j.rse.2015.02.022
- Ems, E., Hutley, L. B., Rossiter-Rachor, N. A., Douglas, M. M., and Setterfield, S. A. (2015). Resource-use efficiency explains grassy weed invasion in a low-resource savanna in north Australia. *Front. Plant Sci.* 6:560. doi: 10.3389/fpls.2015.00560
- Fan, J., Zhong, H., Harris, W., Yu, G., Wang, S., Hu, Z., et al. (2008). Carbon storage in the grasslands of China based on field measurements of above- and below-ground biomass. *Climatic Change* 86, 375–396.

- Farquhar, G. D., Hubick, K. T., Condon, A. G., and Richards, R. A. (1989). Carbon isotope fractionation and plant water-use efficiency. *Stable Isotopes Ecol. Res.* 68, 21–40. doi: 10.1007/978-1-4612-3498-2_2
- Gebler, S., Franssen, H., Pütz, T., Post, H., Schmidt, M., and Vereecken, H. (2015). Actual evapotranspiration and precipitation measured by lysimeters: a comparison with eddy covariance and tipping bucket. *Hydrol. Earth Syst. Sci.* 19, 2145–2161. doi: 10.5194/hess-19-2145-2015
- Hamilton, S. K., Hussain, M. Z., Bhardwaj, A. K., Basso, B., and Robertson, G. P. (2015). Comparative water use by maize, perennial crops, restored prairie, and poplar trees in the US Midwest. *Environ. Res. Lett.* 10: 064015.
- Han, L., Wang, Q. F., Chen, Z., Yu, G. R., and Guo, J. X. (2020). Spatial patterns and climate controls of seasonal variations in carbon fluxes in China's terrestrial ecosystems. *Glob. Planet. Change.* 189:103175.
- Hu, Z. M., Wen, X. F., Sun, X. M., Li, L. H., Yu, G. R., Lee, X. H., et al. (2014). Partitioning of evapotranspiration through oxygen isotopic measurements of water pools and fluxes in a temperate grassland. *J. Geophys. Res. Biogeosci.* 119, 358–372. doi: 10.1002/2013jg002367
- Hu, Z. M., Yu, G. R., Fan, J. W., Zhong, H. P., Wang, S. Q., Li, S. G., et al. (2010). Precipitation-use efficiency along a 4500-km grassland transect. *Glob. Ecol. Biogeogr.* 19, 842–851.
- Hu, Z. M., Yu, G. R., Fu, Y. L., Sun, X. M., Li, Y. N., Shi, P. L., et al. (2008). Effects of vegetation control on ecosystem water use efficiency within and among four grassland ecosystems in China. *Glob. Chang. Biol.* 14, 1609–1619. doi: 10.1111/j.1365-2486.2008.01582.x
- Hu, Z. M., Yu, G. R., Zhou, Y. L., Sun, X. M., Li, Y. N., Shi, P. L., et al. (2009). Partitioning of evapotranspiration and its controls in four grassland ecosystems: application of a two-source model. *Agric. For. Meteorol.* 149, 1410–1420. doi: 10.1016/j.agrformet.2009.03.014
- Huxman, T. E., Smith, M. D., Fay, P. A., Knapp, A. K., Shaw, M. R., Loik, M. E., et al. (2004). Convergence across biomes to a common rain-use efficiency. *Nature* 429, 651–654. doi: 10.1038/nature02561
- Keenan, T. F., Hollinger, D. Y., Bohrer, G., Dragoni, D., Munger, J. W., Schmid, H. P., et al. (2013). Increase in forest water-use efficiency as atmospheric carbon dioxide concentrations rise. *Nature* 499:324. doi: 10.1038/nature12291
- Lassaletta, L., Billen, G., Grizzetti, B., Juliette, A., and Josette, G. (2014). 50 year trends in nitrogen use efficiency of world cropping systems: the relationship between yield and nitrogen input to cropland. *Environ. Res. Lett.* 9:105011. doi: 10.1088/1748-9326/9/10/105011
- Lauenroth, W. K., Burke, I. C., and Paruelo, J. M. (2000). Patterns of production and precipitation-use efficiency of winter wheat and native grasslands in the central great plains of the United States. *Ecosystems* 3, 344–351. doi: 10.1007/s100210000031
- Law, B., Williams, M., Anthoni, P., Baldocchi, D., and Unsworth, M. (2008). Measuring and modelling seasonal variation of carbon dioxide and water vapour exchange of a *Pinus ponderosa* forest subject to soil water deficit. *Glob. Change Biol.* 6, 613–630. doi: 10.1046/j.1365-2486.2000.00339.x
- Li, Y., Fan, J., and Yu, H. (2019a). Grazing exclusion, a choice between biomass growth and species diversity maintenance in Beijing—Tianjin sand source control project. *Sustainability* 11:1941. doi: 10.3390/su11071941
- Li, Y., Fan, J., Hu, Z., Shao, Q., and Harris, W. (2016). Comparison of evapotranspiration components and water-use efficiency among different land use patterns of temperate steppe in the Northern China pastoral-farming ecotone. *Int. J. Biometeorol.* 60, 827–841. doi: 10.1007/s00484-015-1076-9
- Li, Y., Fan, J., Hu, Z., Shao, Q., Zhang, L., Yu, H., et al. (2015). Influence of land use patterns on evapotranspiration and its components in a temperate grassland ecosystem. *Adv. Meteorol.* 2015, 1–12. doi: 10.1155/2015/452603
- Li, Y., Shao, Q., Fan, J., Chen, Y., Chen, Z., Guan, H., et al. (2019b). Effects of grassland cultivation on ecosystem water use efficiency in a grazed temperate grassland area. *Acta Pratacult. Sin.* 28, 1–12.
- Liu, D., Li, Y., Wang, T., Peylin, P., MacBean, N., Ciaia, P., et al. (2018). Contrasting responses of grassland water and carbon exchanges to climate change between Tibetan Plateau and Inner Mongolia. *Agric. For. Meteorol.* 249, 163–175.
- Liu, J., Xu, X., and Shao, Q. Q. (2008). The spatial and temporal characteristics of grassland degradation in the three-river headwaters region in Qinghai Province. *J. Geograph. Sci.* 63, 364–376.
- Liu, R., Zhu, P. F., Wang, Y. S., Chen, Z., Zhu, J. R., Shu, L. Z., et al. (2021). Alternate partial root-zone drip nitrogen fertigation reduces residual nitrate loss while improving the water use but not nitrogen use efficiency. *Front. Plant Sci.* 12:2237. doi: 10.3389/fpls.2021.722459
- Liu, S., Zamanian, K., Schleuss, P.-M., Zarebanadkouki, M., and Kuzyakov, Y. (2018). Degradation of Tibetan grasslands: consequences for carbon and nutrient cycles. *Agric. Ecosyst. Environ.* 252, 93–104.
- Liu, W., Mo, X., Liu, S., Lin, Z., and Lv, C. (2021). Attributing the changes of grass growth, water consumed and water use efficiency over the Tibetan Plateau. *J. Hydrol.* 598:126464. doi: 10.1016/j.jhydrol.2021.126464
- Mahfouf, J., Noihan, J., (1991). Comparative study of various formulations of evaporation from bare soil using *in situ* data. *J. Appl. Meteorol.* 30, 1354–1365.
- Nath, K., Phee, B., Jeong, S., Lee, S., Tateno, Y., Allakhverdiev, S., et al. (2013). Age-dependent changes in the functions and compositions of photosynthetic complexes in the thylakoid membranes of *Arabidopsis thaliana*. *Photosynth. Res.* 117, 547–556. doi: 10.1007/s11120-013-9906-2
- Niu, S. L., Wu, M. Y., Han, Y., Xia, J. Y., Li, L. H., and Wan, S. Q. (2008). Water-mediated responses of ecosystem carbon fluxes to climatic change in a temperate steppe. *New Phytol.* 177, 209–219. doi: 10.1111/j.1469-8137.2007.02237.x
- Niu, S. L., Xing, X. R., Zhang, Z., Xia, J. Y., Zhou, X. H., Song, B., et al. (2011). Water-use efficiency in response to climate change: from leaf to ecosystem in a temperate steppe. *Glob. Change Biol.* 17, 1073–1082. doi: 10.1111/j.1365-2486.2010.02280.x
- Panda, D., and Sarkar, R. K. (2013). Natural leaf senescence: probed by chlorophyll fluorescence, CO₂ photosynthetic rate and antioxidant enzyme activities during grain filling in different rice cultivars. *Physiol. Mol. Biol. Plants* 19, 43–51. doi: 10.1007/s12298-012-0142-6
- Ponton, S., Flanagan, L. B., Alstad, K. P., Johnson, B. G., Morgenstern, K., Kljun, N., et al. (2006). Comparison of ecosystem water use efficiency among Douglas-fir forest and grassland using eddy covariance and carbon isotope techniques. *Glob. Change Biol.* 12, 294–310. doi: 10.1111/j.1365-2486.2005.01103.x
- Reichstein, M., Falge, E., Baldocchi, D., Papale, D., Aubinet, M., Berbigier, P., et al. (2005). On the separation of net ecosystem exchange into assimilation and ecosystem respiration: review and improved algorithm. *Glob. Change Biol.* 11, 1424–1439. doi: 10.1111/j.1365-2486.2005.001002.x
- Scanlon, T. M., and Albertson, J. D. (2010). Canopy scale measurements of CO₂ and water vapor exchange along a precipitation gradient in southern Africa. *Glob. Change Biol.* 10, 329–341. doi: 10.1046/j.1365-2486.2003.00700.x
- Shannon, E. C. (1948). A mathematical theory of communication. *Bell Syst. Tech. J.* 27, 379–423.
- Shuttleworth, W. J., and Wallace, J. S. (2010). Evaporation from sparse crops—an energy combination theory. *Q. J. R. Meteorol. Soc.* 111, 839–855. doi: 10.1002/qj.49711146910
- Tcherkez, G., Gauthier, P., Buckley, T. N., Busch, F. A., Barbour, M. M., Bruhn, D., et al. (2017). Leaf day respiration: low CO₂ flux but high significance for metabolism and carbon balance. *New Phytol.* 216, 986–1001. doi: 10.1111/nph.14816
- Wang, B., Bao, Q., Hoskins, B., Wu, G., and Liu, Y. (2008). Tibetan Plateau warming and precipitation changes in East Asia. *Geophys. Res. Lett.* 35:L14702. doi: 10.1029/2008GL034330
- Wang, L., Houyuan, L. U., and Naiqin, W. U. (2004). Discovery of C₄ species at high altitude in Qinghai-Tibetan Plateau. *Chinese Sci. Bull.* 49, 1392–1396.
- Wang, S., Fan, J., Li, Y., and Huang, L. (2019). Effects of grazing exclusion on biomass growth and species diversity among various grassland types of the Tibetan Plateau. *Sustainability* 11:1705. doi: 10.3390/su11061705
- Webb, E. K., Pearman, G. I., and Leuning, R. (2010). Correction of flux measurements for density effects due to heat and water vapour transfer. *Q. J. R. Meteorol. Soc.* 106, 85–100. doi: 10.1002/qj.49710644707
- Wehr, R., Munger, J. W., Mcmanus, J. B., Nelson, D. D., Zahniser, M. S., Davidson, E. A., et al. (2016). Seasonality of temperate forest photosynthesis and daytime respiration. *Nature* 534, 680–683. doi: 10.1038/nature17966
- Wei, Y., Hu, Z. M., Zhao, Y. P., Zhang, X. Z., Fan, Y. Z., Shi, P. L., et al. (2015). Modeling net ecosystem carbon exchange of alpine grasslands with a satellite-driven model. *PLoS one* 10:e0122486. doi: 10.1371/journal.pone.0122486
- Williams, D. G., Cable, W., Hultine, K., Hoedjes, J. C., Yezpe, E. A., Simonneaux, V., et al. (2004). Evapotranspiration components determined by stable isotope, sap flow and eddy covariance techniques. *Agric. For. Meteorol.* 125, 241–258. doi: 10.1016/j.agrformet.2004.04.008

- Wu, G., Liu, X., Chen, T., Xu, G., Wang, W., Zeng, X., et al. (2015). Elevation-dependent variations of tree growth and intrinsic water-use efficiency in Schrenk spruce (*Picea schrenkiana*) in the western Tianshan Mountains, China. *Front. Plant Sci.* 6:309. doi: 10.3389/fpls.2015.00309
- Yu, G. R., Wen, X. F., Sun, X. M., Tanner, B. D., Lee, X. H., and Chen, J. Y. (2006). Overview of ChinaFLUX and evaluation of its eddy covariance measurement. *Agric. For. Meteorol.* 137, 125–137. doi: 10.1016/j.agrformet.2006.02.011
- Zhang, L. X., Fan, J. W., Shao, Q. Q., Tang, F. P., Zhang, H. Y., and Li, Y. Z. (2014). Changes in grassland yield and grazing pressure in the Three Rivers headwater region before and after the implementation of the eco-restoration project. *Acta Pratacult. Sin.* 23, 116–123.
- Zhang, L., Zhongmin, H. U., Fan, J., Zhou, D., and Tang, F. (2014). A meta-analysis of the canopy light extinction coefficient in terrestrial ecosystems. *Front. Earth Sci.* 8:599–609. doi: 10.1093/aob/mcw099
- Zhang, P., Wei, T., Cai, T., Ali, S., Han, Q., Ren, X., et al. (2017). Plastic-film mulching for enhanced water-use efficiency and economic returns from maize fields in semiarid China. *Front. Plant Sci.* 8:512. doi: 10.3389/fpls.2017.00512
- Zhang, T., Xu, M. J., Zhang, X. Z., Zhao, T. H., An, T. T., Li, Y. G., et al. (2019). Grazing-induced increases in soil moisture maintain higher productivity during droughts in alpine meadows on the Tibetan Plateau. *Agric. For. Meteorol.* 269, 249–256.
- Zhou, S., Yu, B., Zhang, Y., Huang, Y., and Wang, G. (2018). Water use efficiency and evapotranspiration partitioning for three typical ecosystems in the Heihe River Basin, northwestern China. *Agric. For. Meteorol.* 253–254, 261–273. doi: 10.1016/j.agrformet.2018.02.002
- Zhu, X., Shao, M., Zeng, C., Jia, X., Huang, L., Zhang, Y., et al. (2016). Application of cosmic-ray neutron sensing to monitor soil water content in an alpine meadow ecosystem on the northern Tibetan Plateau. *J. Hydrol.* 536, 247–254. doi: 10.1016/j.jhydrol.2016.02.038
- Conflict of Interest:** The authors declare that the research was conducted in the absence of any commercial or financial relationships that could be construed as a potential conflict of interest.
- Publisher's Note:** All claims expressed in this article are solely those of the authors and do not necessarily represent those of their affiliated organizations, or those of the publisher, the editors and the reviewers. Any product that may be evaluated in this article, or claim that may be made by its manufacturer, is not guaranteed or endorsed by the publisher.
- Copyright © 2022 Li, Zhang, Shao, Fan, Chen, Dong, Hu and Zhan. This is an open-access article distributed under the terms of the Creative Commons Attribution License (CC BY). The use, distribution or reproduction in other forums is permitted, provided the original author(s) and the copyright owner(s) are credited and that the original publication in this journal is cited, in accordance with accepted academic practice. No use, distribution or reproduction is permitted which does not comply with these terms.