



OsRELA Regulates Leaf Inclination by Repressing the Transcriptional Activity of OsLIC in Rice

Chen-li Zhu^{1†}, Bao Xing^{1†}, Shou-zhen Teng¹, Chen Deng¹, Zhen-yong Shen³, Peng-fei Ai³, Tie-gang Lu¹, Sheng-wei Zhang^{2*} and Zhi-guo Zhang^{1*}

¹ Joint CAAS/IRRI Laboratory for Photosynthetic Enhancement, Biotechnology Research Institute/National Key Facility for Genetic Resources and Gene Improvement, Chinese Academy of Agricultural Sciences, Beijing, China, ² Ministry of Education Key Laboratory of Molecular and Cellular Biology, Hebei Collaboration Innovation Center for Cell Signaling and Environmental Adaptation, Hebei Key Laboratory of Molecular and Cellular Biology, College of Life Sciences, Hebei Normal University, Shijiazhuang, China, ³ College of Bioscience and Bioengineering, Hebei University of Science and Technology, Shijiazhuang, China

OPEN ACCESS

Edited by:

Yuling Jiao,
Peking University, China

Reviewed by:

Meng Yuan,
Huazhong Agricultural University,
China
Jun Fang,
Key Laboratory of Soybean Molecular
Design Breeding, Northeast Institute
of Geography and Agroecology,
Chinese Academy of Sciences (CAS),
China

*Correspondence:

Sheng-wei Zhang
swzhang@hebtu.edu.cn
Zhi-guo Zhang
zhangzhiguo@caas.cn

† These authors have contributed
equally to this work

Specialty section:

This article was submitted to
Plant Development and EvoDevo,
a section of the journal
Frontiers in Plant Science

Received: 17 August 2021

Accepted: 09 September 2021

Published: 01 October 2021

Citation:

Zhu C-l, Xing B, Teng S-z,
Deng C, Shen Z-y, Ai P-f, Lu T-g,
Zhang S-w and Zhang Z-g (2021)
OsRELA Regulates Leaf Inclination by
Repressing the Transcriptional Activity
of OsLIC in Rice.
Front. Plant Sci. 12:760041.
doi: 10.3389/fpls.2021.760041

Leaf angle is one of the most important agronomic traits in rice, and changes in leaf angle can alter plant architecture to affect photosynthetic efficiency and thus determine grain yield. Therefore, it is important to identify key genes controlling leaf angle and elucidate the molecular mechanisms to improve rice yield. We obtained a mutant *rela* (*regulator of leaf angle*) with reduced leaf angle in rice by EMS mutagenesis, and map-based cloning revealed that *OsRELA* encodes a protein of unknown function. Coincidentally, *DENSE AND ERECT PANICLE 2 (DEP2)* was reported in a previous study with the same gene locus. *RNA-seq* analysis revealed that *OsRELA* is involved in regulating the expression of *ILI* and *Expansin* family genes. Biochemical and genetic analyses revealed that *OsRELA* is able to interact with *OsLIC*, a negative regulator of BR signaling, through its conserved C-terminal domain, which is essential for *OsRELA* function in rice. The binding of *OsRELA* can activate the expression of downstream genes repressed by *OsLIC*, such as *OsILI1*, a positive regulator of leaf inclination in rice. Therefore, our results suggest that *OsRELA* can act as a transcriptional regulator and is involved in the regulation of leaf inclination by regulating the transcriptional activity of *OsLIC*.

Keywords: leaf inclination, *OsRELA*, *OsLIC*, phytohormone, rice

INTRODUCTION

As one of the agronomic traits closely related to grain yield, leaf angle not only controls plant architecture but also moderate leaf erectness is essential for improving rice yield (Wang and Li, 2011). Leaf erectness improves light capture and CO₂ diffusion efficiency (Sakamoto et al., 2006), thus increasing photosynthetic efficiency. The leaf angle in rice is determined by the lamina joint that connects the leaf blade and leaf sheath. Compared with the leaf tissue, mesophyll cells were replaced by parenchyma cells, and more sclerenchyma cells were gathered around the vascular bundles on the adaxial and abaxial sides. This structure not only provides mechanical strength to the lamina joint but also a determinant factor of leaf angle (Zhou et al., 2017). Many genes have been reported to be involved in the regulation of lamina joint development in rice, and many of

these mutants have shown great potential to increase yield. Therefore, it has become the goal of breeders to find and elucidate the molecular mechanism of genes in regulating leaf angle in rice.

In rice, many transcription factors have been reported to be involved in the regulation of lamina joint development; therefore, control of leaf angle can be achieved through genetic manipulation. Altering the expression of some specific transcription factors resulted in increased leaf angle; for example, overexpression of the *Lax panicle1* (*LAX1*) gene resulted in increased leaf angle (Komatsu et al., 2003), while the *OsLIC* (*LEAF and TILLER ANGLE INCREASED CONTROLLER*) mutant exhibited a significant increase in leaf angle and tiller angle (Wang et al., 2008). Overexpression of *auxin response Factor 19* (*OsARF19*) can promote cell division on the adaxial side of the lamina joint, which results in an increased leaf angle (Zhang et al., 2015). Interestingly, overexpression of *OsIAA1*, a repressor of *OsARF*, also led to increased leaf angle (Song et al., 2009). However, some mutants of transcription factors exhibit reduced leaf angle, such as the *OsLIGULELESS1* (*OsLG1*) mutant, which has a complete absence of the lamina joint, auricle and ligule tissues, resulting in erect leaves (Lee et al., 2007). The reduced leaf angle 1 (*RLA1*) and BRASSINAZOLE RESISTANT1 (*OsBZR1*) protein complex is a positive regulator of the BR signaling pathway, and their mutants have an obvious erect leaf phenotype (Bai et al., 2007; Qiao et al., 2017). *INCLINATION1* (*IL1*) and *IL1 binding bHLH* (*IBH1*) are direct downstream target genes of the transcription factors *OsBZR1* and *OsLIC*, which are antagonistically involved in regulating the elongation of parenchyma cells in the lamina joint (Zhang L.Y. et al., 2009). It has also been reported that *REGULATOR OF LEAF INCLINATION 1* (*RLI1*) can directly activate the expression of *BRASSINOSTEROID UPREGULATED1* (*BU1*) and *BUL1 COMPLEX1* (*BC1*), thereby promoting elongation of lamina joint cells (Ruan et al., 2018). Although multiple types of transcription factors are involved in the regulation of the leaf angle, most of them are related to the metabolism and signaling of plant hormones, such as auxin and brassinosteroids.

In addition to transcription factors, some enzymes related to the transport, metabolism, or signaling of auxin and brassinosteroids are also involved in the development of the lamina joint. For example, *LAZY1* regulates leaf angle by affecting the gravitropism of aboveground tissues of rice (Li et al., 2007), while *Loose Plant Architecture 1* (*LPA1*) regulates the expression of *OsPIN1a* and thus affects the polar transport of auxin (Sun et al., 2019). The *GH3* family gene *LEAF INCLINATION1* (*LC1*) and *an increased number of tillers, enlarged leaf angles, and dwarfism* (*TLD1*) can promote cell elongation by decreasing auxin content at the lamina joint (Zhang S.W. et al., 2009; Zhao et al., 2013). Inhibition of auxin receptor *OsTIR1* expression also resulted in increased leaf angle, suggesting that auxin can negatively regulate leaf angle by inhibiting cell division and cell elongation (Bian et al., 2012). Mutations in the cytochrome *P450* genes *D2*, *D11* and *OsDWARF*, which are involved in BR biosynthesis (Mori et al., 2002; Hong et al., 2003; Tanabe et al., 2005), and the receptor for BR signaling *OsBRI1* cause shortening of parenchyma cells of the lamina joint and result in an erect leaf phenotype (Yamamuro et al., 2000). The expression and protein

stability of the U-type cyclin *CYC U4;1* is negatively regulated by BR, which positively regulates leaf erectness by promoting the division of sclerenchyma cells on the abaxial side of the lamina joint (Sun et al., 2015). From these analyses, it is clear that auxin and BRs are of great importance in the regulation of leaf angle; however, whether other molecules regulate leaf angle by directly or indirectly integrating the metabolism or physiological process of hormones in rice needs to be further evaluated.

In this study, we obtained a mutant *rela* (*regulator of leaf angle*) with reduced leaf angle in rice by EMS mutagenesis. *RNA-seq* analysis revealed that *OsRELA* is involved in the regulation of *OsEXPA5*, *OsEXPB6*, and *OsEXPB11* and *OsIL11*, *OsIL14* (*OsBU1*), and *OsIL15* (*OsBUL1*) expression. Biochemical and genetic analyses revealed that *OsRELA* interacts with *OsLIC* through the conserved C-terminal domain, and the binding of *OsRELA* can activate the expression of downstream genes repressed by *OsLIC*, thus affecting the leaf angle by positively regulating the expression of *OsIL11* in rice.

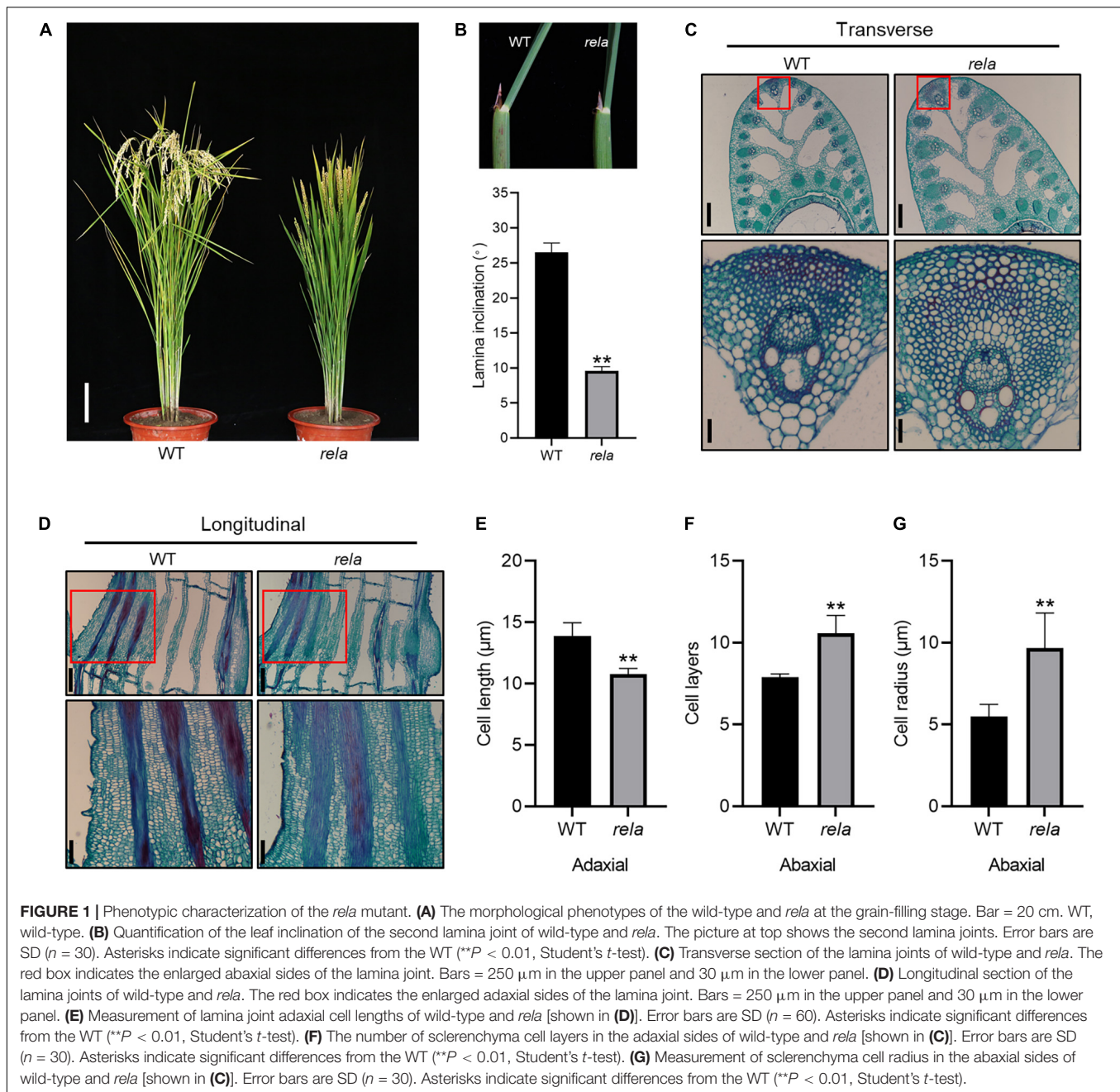
RESULTS

Phenotypic Analysis of *Rela* Mutant

To screen for genes involved in the regulation of leaf angle in rice, we created a library of ⁶⁰Co- γ irradiation-induced mutants from which we isolated a mutant with semidwarf and leaf erectness (**Figures 1A,B**), reduced panicle and leaf length phenotypes (**Supplementary Figures 1B,C**), based on which the mutant was named *regulator of leaf angle* (*rela*). We crossed the *rela* mutant with the wild-type and found that the ratio of wild-type to mutant in the segregating population was 415:134, close to 3:1, indicating that *rela* is a recessive mutation controlled by a single nuclear gene. To further reveal the reason for the reduced leaf angle of the *rela* mutant, we performed a transverse section of the lamina joint and found that the number of sclerenchyma cell layers and the cell area on the abaxial side of the *rela* mutant were increased compared to those of the wild-type (**Figures 1C,E,G**). Longitudinal section revealed that the length of parenchyma cells on the adaxial side of the *rela* mutant was shorter than that of the wild-type (**Figures 1D,E**). In addition, longitudinal section of the uppermost internode revealed that the cell length in the *rela* mutant was significantly shorter than that of the wild-type (**Supplementary Figures 1A,D–F**). These results suggest that *OsRELA* promotes the elongation of cells in the culm and parenchyma cells on the adaxial side and inhibits the division and expansion of sclerenchyma cells on the abaxial side of the lamina joint, thus positively regulating the leaf angle and plant height.

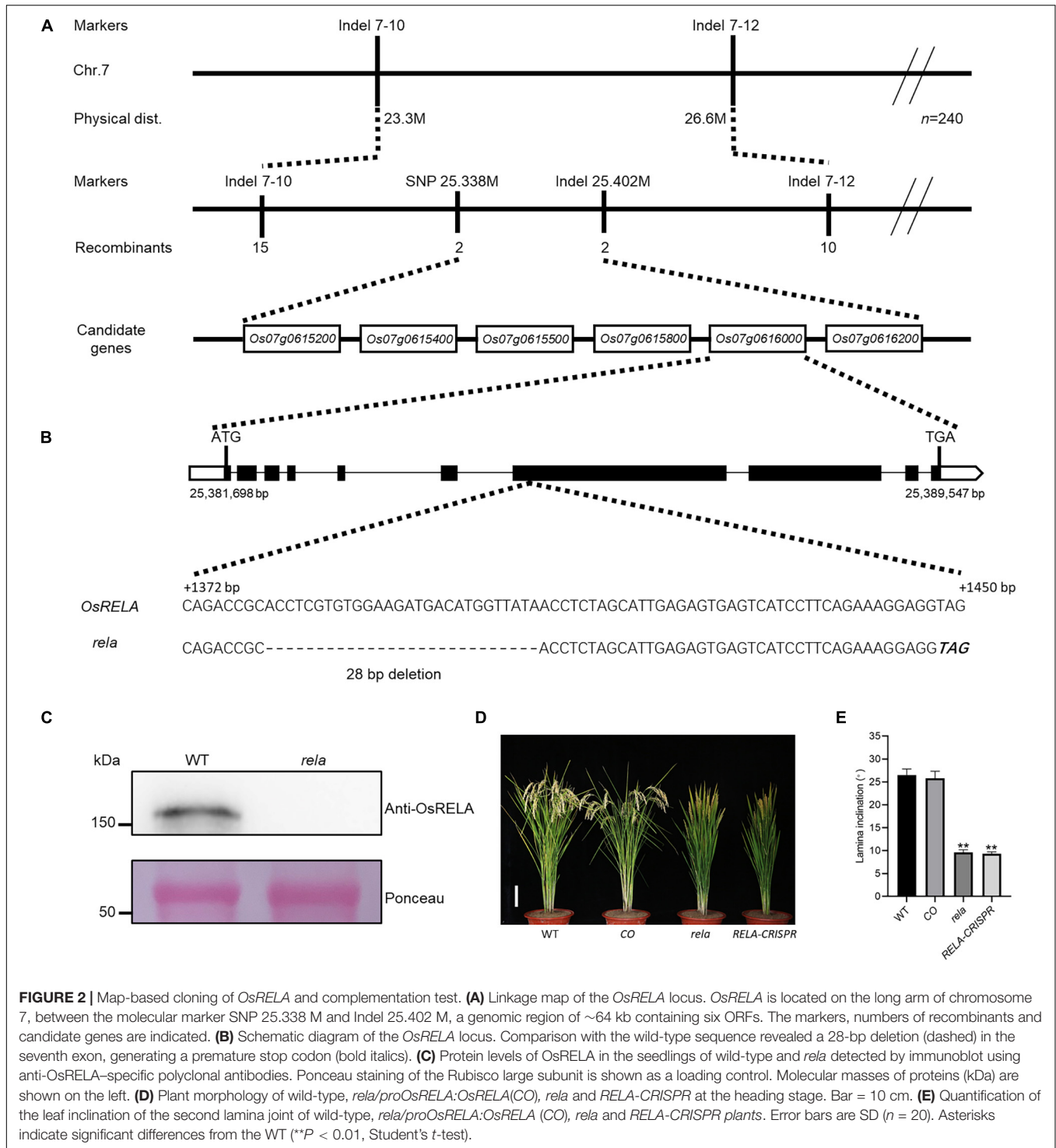
Cloning of *OsRELA* and Complementation Analysis

To clone the gene encoding *OsRELA*, we crossed the *rela* mutant with *Dular* and obtained a segregating population of the F₂ generation. By linkage analysis, *OsRELA* was narrowed between two genetic markers, Indel 7–10 and Indel 7–12, located on the long arm of chromosome 7. By further fine mapping using 2871 F₂ generation plants, we targeted the *OsRELA* gene between SNP 25.338 M, and Indel 25.402 M, and six genes were



contained in this 64-kb interval: *Os07g0615200*, *Os07g0615400*, *Os07g0615500*, *Os07g0615800*, *Os07g0616000*, and *Os07g0616200* (Figure 2A). Further genome sequencing revealed a 28-bp deletion in the seventh exon of the *Os07g0616000* gene, which shifted the reading frame and eventually led to a premature stop codon, while the rest of the genes were sequenced without mutations (Figure 2B). Our immunoblotting experiments using a specific polyclonal antibody that recognizes the protein encoded by *Os07g0616000* showed that the expression of the protein encoded by *Os07g0616000* was not detected in the *rela* mutant (Figure 2C), indicating that the phenotypes of the *rela* mutant are most likely due to a 28-bp deletion in

the *Os07g0616000* gene. Coincidentally, *OsRELA* is located at the same gene locus as the previously reported *DENSE AND ERECT PANICLE 2*. *DEP2* was revealed to be associated with panicle development (Li et al., 2010), and we also found this phenotype in the *rela* mutant; however, the biological function of *OsRELA* involved in the regulation of leaf angle has not been elucidated. Phylogenetic tree analysis revealed that *OsRELA* belongs to a *Spermatophyta*-specific gene family, and its homologs are distributed in *Gymnosperm*, *Amborella*, *Eudicots*, and *Monocots*. However, the gene family has fewer members in *Eudicots*, and there are three copies in *Arabidopsis*: *AT3G14172*, *AT1G72410*, and *AT1G17360*. Most of the family members are



distributed in the *Monocots*, and there is only one copy in rice (**Supplementary Figure 2**).

To further clarify the function of *OsRELA* in regulating leaf inclination, we constructed the *pOsRELA:OsRELA* vector and transformed it into the *rela* mutant. The leaf angle of transgenic lines expressing *OsRELA* was restored to the wild-type state (**Figure 2D**). We also obtained genome-edited lines of

Os07g0616000 using the *clustered regularly interspaced short palindromic repeats* (CRISPR)/CRISPR associated protein 9 (Cas9) genome editing tool (**Supplementary Figure 3**). In all genome-edited homozygous lines obtained, the leaf angle was significantly smaller than that of the wild-type line, consistent with the *rela* mutant phenotype (**Figure 2E**). These genetic results suggest that *OsRELA* is the key gene that regulates leaf angle in rice.

Subcellular Localization and Tissue Expression Patterns of *OsRELA*

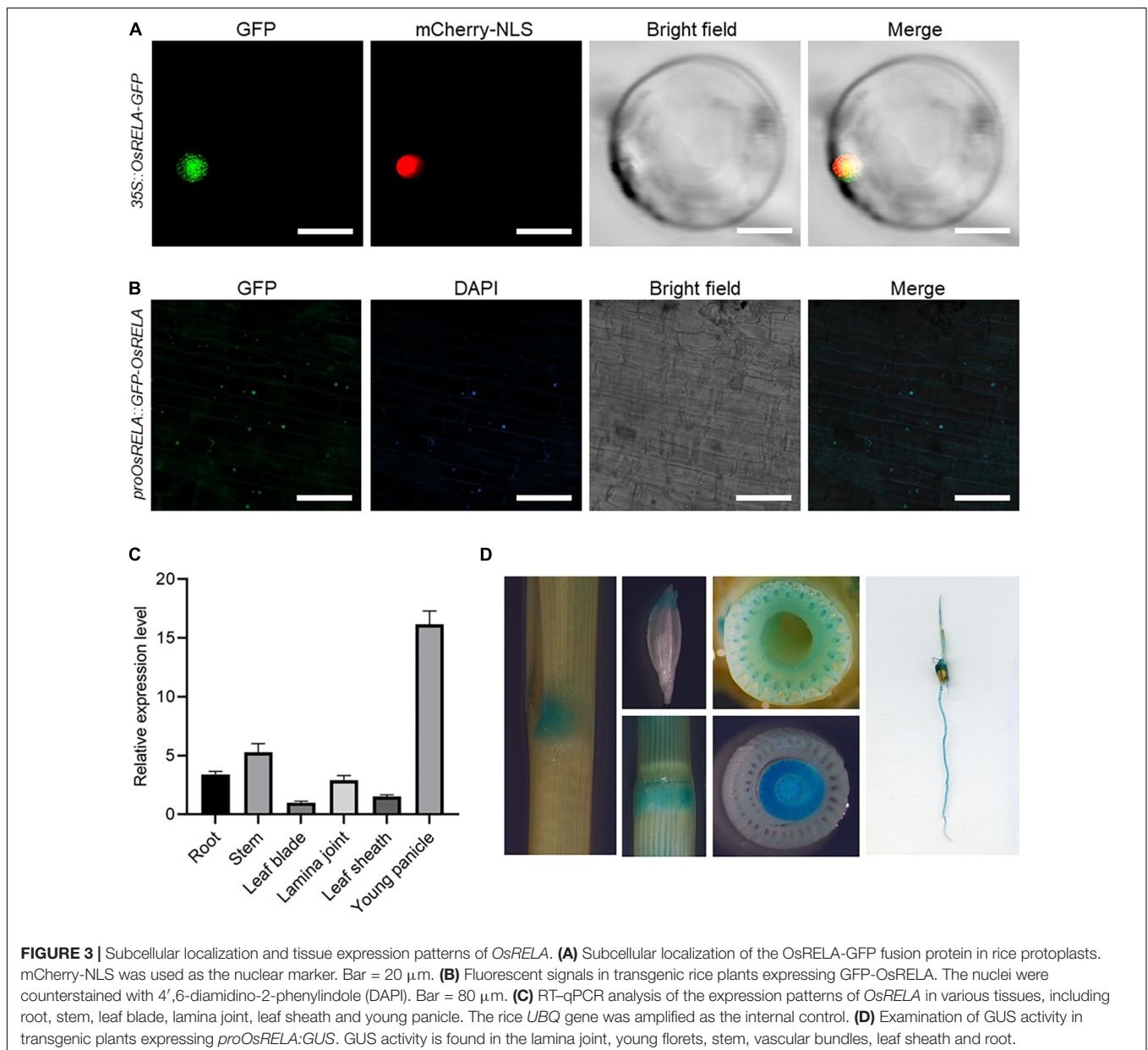
To determine the localization of *OsRELA* in rice cells, we transformed the *35S:OsRELA-GFP* vector into rice protoplasts for transient expression. Confocal laser scanning microscopy revealed that the fluorescence of the *OsRELA-GFP* fusion protein merged with the nuclear marker *mCherry-NLS* signal (Figure 3A). Consistently, GFP fluorescence of the GFP-*OsRELA* fusion protein was colocalized with the nuclear stain DAPI in the *rela/pOsRELA:GFP-OsRELA* lines (Figure 3B), suggesting that *OsRELA* functions mainly in the nucleus.

To further analyze the expression pattern of *OsRELA*, we performed real-time quantitative PCR (RT-qPCR) to measure the *OsRELA* expression level, and the results showed that

OsRELA was expressed in various tissues of rice (Figure 3C). GUS staining experiments performed on *pOsRELA:GUS* transgenic plants revealed strong GUS staining in the lamina joint, young florets, stem, vascular bundles, leaf sheath and root (Figure 3D). All these tissues were associated with the phenotypes of the *rela* mutant.

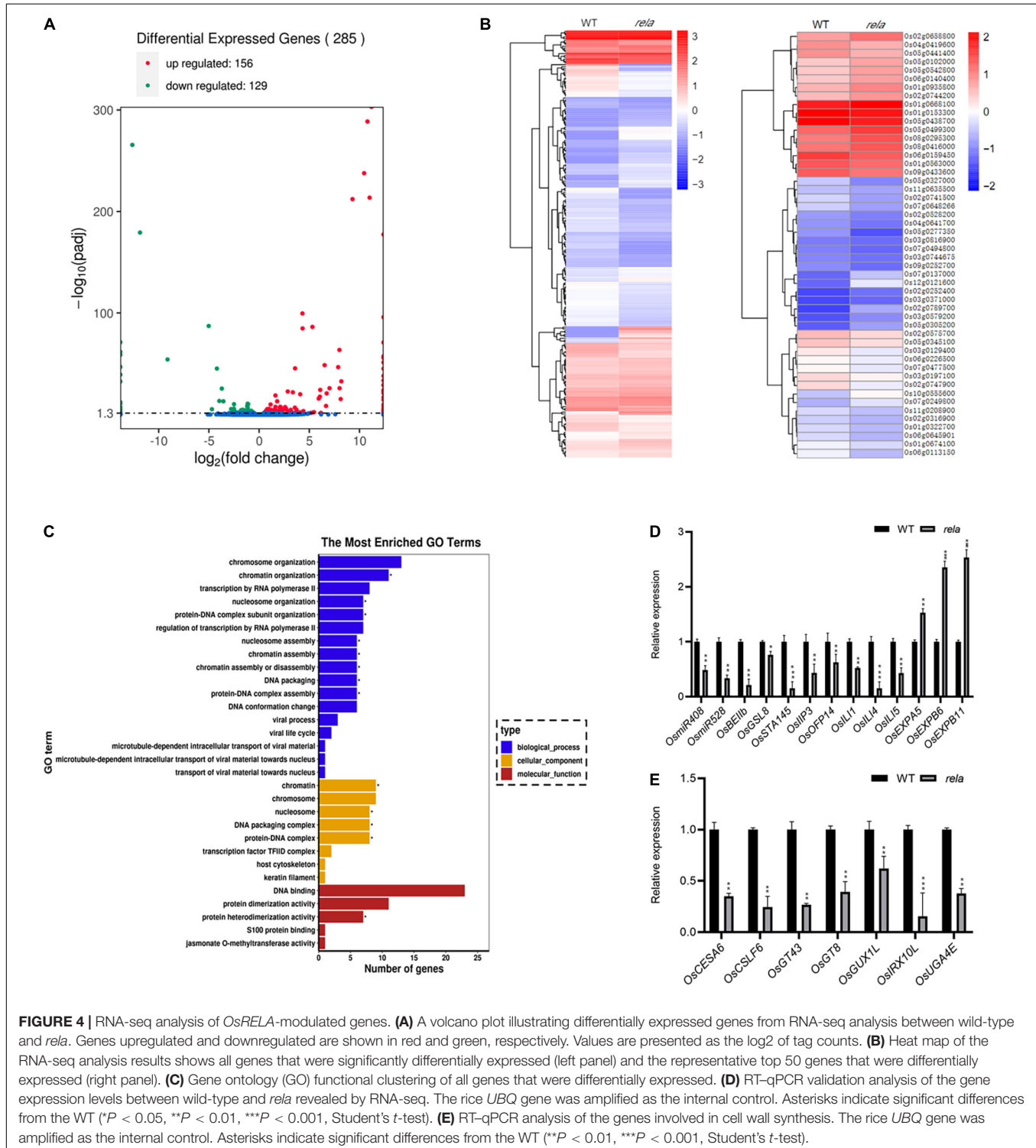
RNA-seq Analysis of Downstream Genes Regulated by *OsRELA*

To analyze *OsRELA*-regulated genes that participate in the regulation of leaf angle, we performed *RNA-seq* analysis on the *rela* mutant and identified 285 genes with significantly different expression levels compared to the wild-type, including 156 upregulated genes and 129 downregulated genes (Figure 4A). We



next performed a hierarchical clustering analysis of all genes that were significantly differentially expressed, and the representative top 50 most significant genes are shown (Figure 4B). In addition, gene ontology (GO) enrichment analysis demonstrated that the molecular functions of the differentially expressed genes were

mainly involved in DNA binding (GO:0043566), suggesting that *OsRELA* is likely to be involved in transcriptional regulation by regulating DNA binding (Figure 4C). We then examined the genes with significant expression changes in the wild type and *rela* by RT-qPCR. Consistent with the *RNA-seq* results,

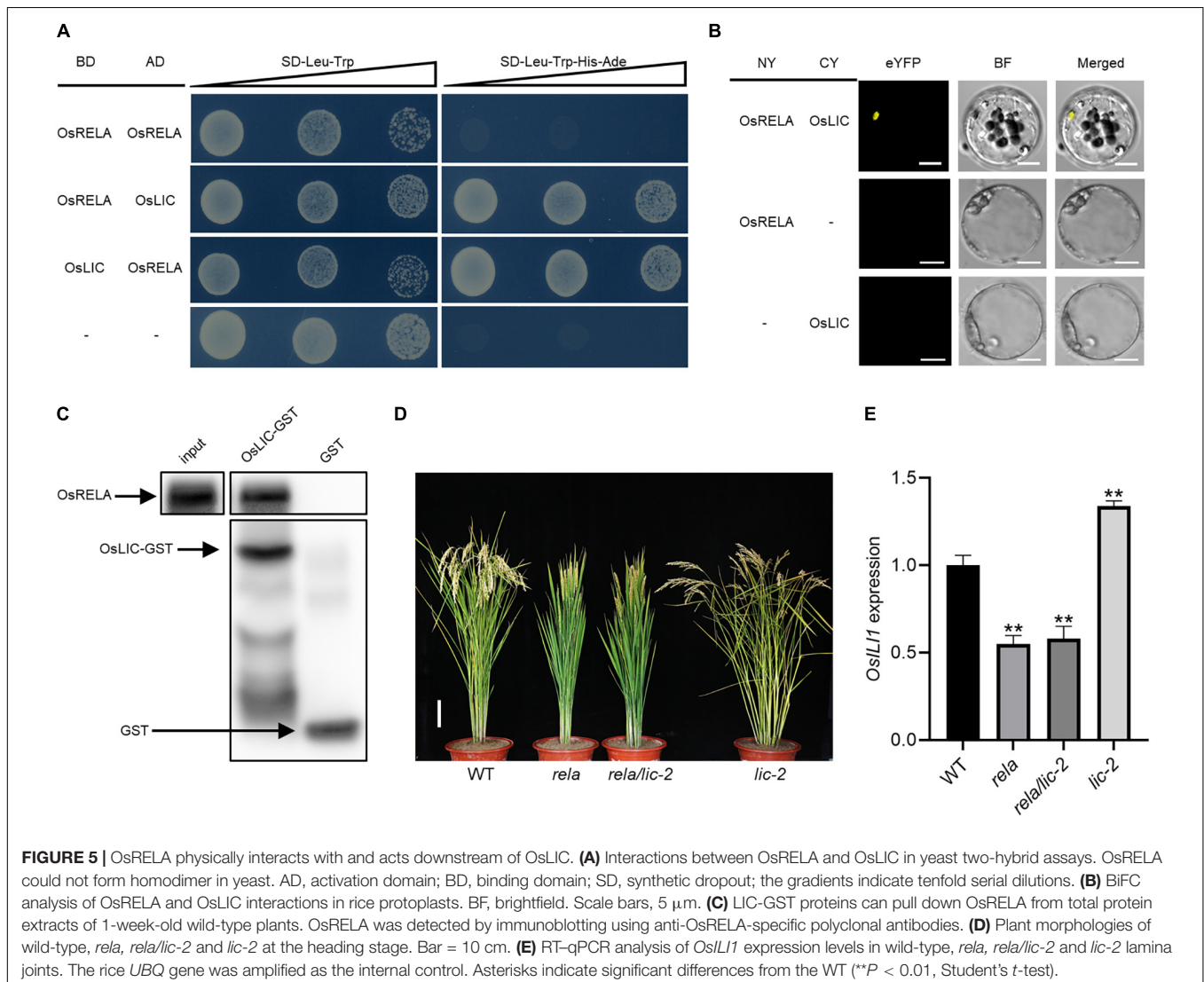


the expression of *OsEXPA5*, *OsEXPB6*, and *OsEXPB11* was significantly upregulated, while the expression of *OsmiR408*, *OsmiR528*, *ILA1 interacting protein 3*, *OsOFF14*, *OsILI1*, *OsILI4* (*OsBU1*), and *OsILI5* (*OsBUL1*) was significantly downregulated in the *rela* mutant (**Figure 4D**), and the expression of seven genes related to cell wall synthesis was also significantly suppressed in *rela* (**Figure 4E**). It is worth noting that *ILA1 interacting protein 3* (*OsIIP3*), *OsILI1*, *OsILI4* (*OsBU1*), and *OsILI5* (*OsBUL1*) were reported to positively regulate leaf angle (Tanaka et al., 2009; Zhang L.Y. et al., 2009; Ning et al., 2011; Jang et al., 2017). *Expansin* family genes and cell wall synthesis genes were involved in the process of cell wall loosening and cell extension (Cho and Kende, 1997; Kuluev et al., 2014). The phenotypes of the *rela* mutant are similar to those of BR-deficient and BR-insensitive mutants (Yamamuro et al., 2000; Hong et al., 2003), and both *Expansins* and *ILI* family genes have been reported to be downstream of BR signaling and involved in the regulation of leaf angle (Wang et al., 2018), implying that *OsRELA* may intersect with the BR signaling pathway to regulate leaf inclination in rice.

OsRELA Physically Interacts With OsLIC and Is Required for OsLIC-Regulated *OsILI1* Expression

To further reveal the relationship between *OsRELA* and the BR signaling pathway, we obtained *OsLIC* from a rice *cDNA* library by a yeast two-hybrid approach using full-length *OsRELA* as bait (**Figure 5A**). *OsLIC* negatively regulates leaf angle and acts as an antagonistic transcription factor of *OsBZR1* (Zhang et al., 2012). However, *OsRELA* does not interact with other BR signaling components, such as *OsGSK2*, *DLT*, *OsBZR1*, and *RLA1*, in yeast (**Supplementary Figure 4**). Bimolecular fluorescence complementation (BiFC) assays showed that *OsRELA* and *OsLIC* interact in rice cells (**Figure 5B**), and the semi-*in vivo* pull-down assay results also indicated that the *OsLIC*-GST fusion protein interacts with *OsRELA* (**Figure 5C**).

To further clarify the genetic relationship between *OsRELA* and *OsLIC*, using the CRISPR/Cas9 system, a *lic-2* mutant line was obtained by targeting the second exon of the *OsLIC* gene,



and DNA sequencing showed that a 1 bp insertion in the second exon of *OsLIC* resulted in premature termination of translation (**Supplementary Figure 5**). The *lic-2* mutant showed an increased leaf and tiller angle (Wang et al., 2008). We then crossed *rela* with the *lic-2* mutant and found that the phenotypes of the *rela/lic-2* double mutant were similar to those of the *rela* mutant (**Figure 5D**), implying that the function of *OsLIC* is dependent on *OsRELA*. Quantitative real-time PCR results showed that the expression level of *OsIL11*, the direct downstream target of *OsLIC*, was reduced in both the *rela* and *rela/lic-2* mutants (**Figure 5E**). The elevated expression level of *OsIL11* and the increased leaf angle in the *lic-2* mutant are consistent with what has been reported previously, suggesting that the regulation of *OsIL11* expression by *OsLIC* is dependent on *OsRELA*.

The OsRELA-OsLIC Interaction Occurs via the Conserved C-Terminal of OsRELA

To clarify the minimal domain of *OsRELA* that interacts with *OsLIC*, we performed sequence and bioinformatics analysis on *OsRELA*. We found a speckle-type BTB/POZ domain at the N-terminus of *OsRELA* by Bioinformatics Toolkit analysis, which is a multifunctional protein–protein interaction motif (Bardwell and Treisman, 1994). Two COILED-COIL domains were predicted by the ExpASY tool kit: 697–724 aa and 798–849 aa. The COILED-COIL domain plays an important role in mediating protein–protein interactions (Burkhard et al., 2001). A nuclear localization sequence was found in its conserved C-terminal domain by SeqNLS software: 1240–1256 aa (**Supplementary Figures 6, 7**).

We next created different truncated forms of *OsRELA* attached to the GAL4-BD domain named BD-*OsRELA* (1–1365 aa), BD-*OsRELA*-T1 (1–199 aa), BD-*OsRELA*-T2 (200–643 aa), BD-*OsRELA*-T3 (1173–1365 aa) and BD-*OsRELA*-T4 (1–1172 aa) (**Figure 6A**). After cotransforming yeast with the *OsLIC*-AD vector, we found that both *OsRELA* and *OsRELA*-T3 interacted strongly with *OsLIC*, while *OsRELA*-T1, *OsRELA*-T2, and *OsRELA*-T4 did not interact with *OsLIC* (**Figure 6B**). The above results suggest that *OsRELA* interacts with *OsLIC* through its conserved C-terminal domain. We further used the promoter of *OsIL11* to drive luciferase (*LUC*) as a reporter and *OsRELA*-FLAG, *OsRELA* Δ C-FLAG, *OsLIC*-FLAG, and FLAG as effectors for the transient expression assay (**Figure 6C**). The results showed that *OsLIC* represses *OsIL11* expression, and when *OsRELA*-FLAG was cotransformed with *OsLIC*-FLAG into rice protoplasts, the expression level of *OsIL11* was elevated. When *OsRELA* Δ C-FLAG was cotransformed with *OsLIC*-FLAG, *OsIL11* expression was repressed (**Figure 6D**). These results indicate that *OsRELA* interacts with *OsLIC* through its conserved C-terminal domain and thus abolishes the transcriptional repression of *OsLIC* on *OsIL11*.

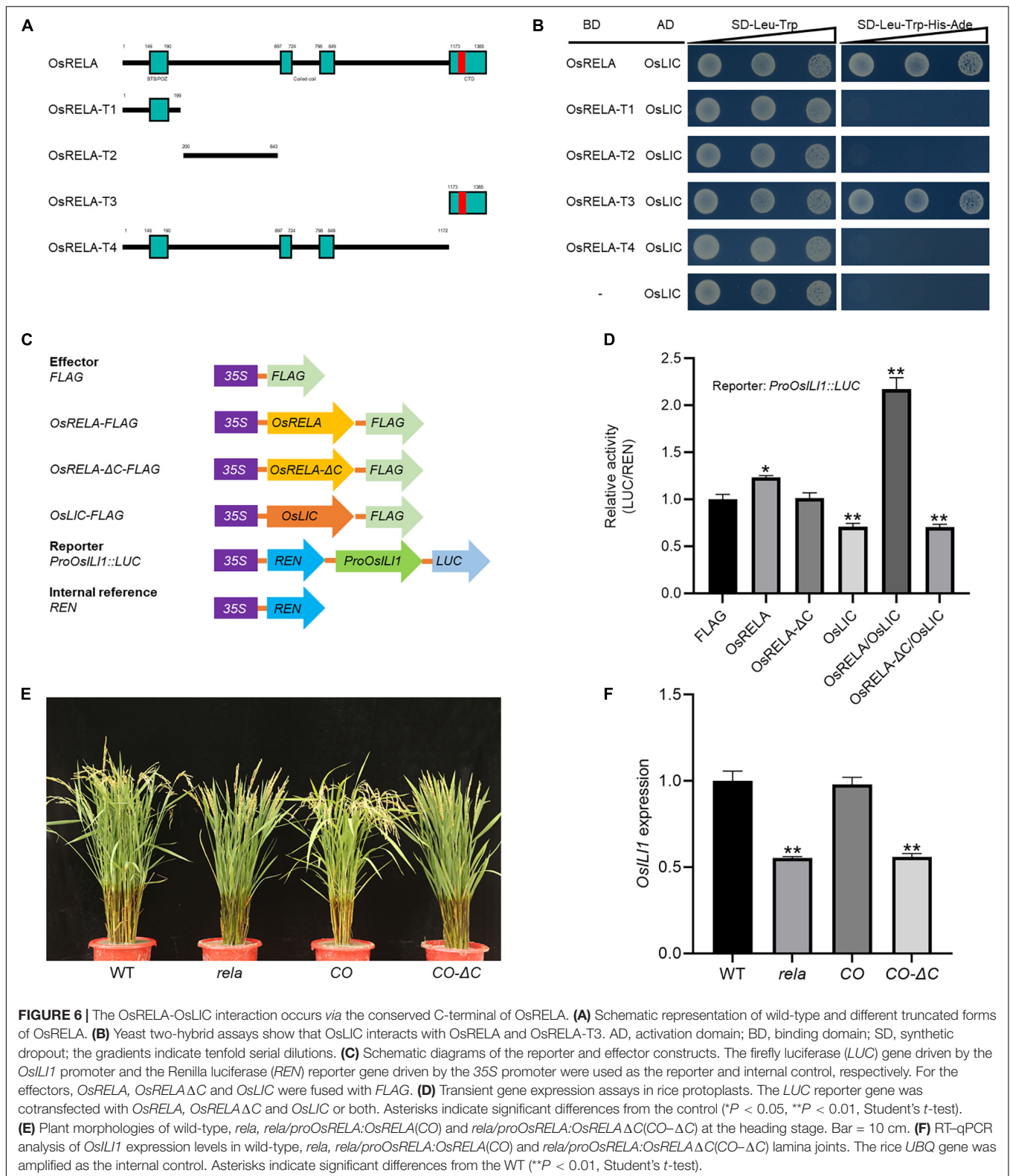
Finally, we genetically analyzed the effect of the C-terminal domain of the *OsRELA* protein on its function and found that deletion of the C-terminal domain could not rescue the phenotypes of the *rela* mutant (**Figure 6E**). Moreover,

quantitative real-time PCR results revealed that the expression level of *OsIL11* was not recovered in the *CO- Δ C* lines (**Figure 6F**), indicating that the regulation of *OsRELA* on *OsIL11* expression through *OsLIC* also depends on its C-terminal domain.

DISCUSSION

Brassinosteroids are important plant hormones that regulate leaf angle in rice (Tong and Chu, 2018). BR deficiency inhibits the elongation of parenchyma cells on the adaxial side and promotes the division of sclerenchyma cells on the abaxial side of the lamina joint (Zhang L.Y. et al., 2009; Sun et al., 2015); therefore, many BR-deficient and BR-insensitive mutants exhibit an erect leaf phenotype. In this study, we obtained a mutant *rela* with a reduced leaf angle by EMS mutagenesis and found that the cell length in the internode and adaxial parenchyma cells in the lamina joint was reduced compared with that in the wild type. The number of sclerenchyma cell layers and the cell area on the abaxial side were increased, and these phenotypes were similar to those of BR-related mutants. The expression of *OsEXPA5*, *OsEXPB6*, and *OsEXPB11* was significantly upregulated in the *rela* mutant, while the expression of *OsIL11*, *OsIL14* (*OsBU1*), *OsIL15* (*OsBUL1*), and genes related to cell wall synthesis were significantly downregulated in the *rela* mutant, and all of these genes were reported to be downstream of the BR signaling pathway. As the only transcription factor in the BR signaling pathway that specifically interacts with *OsRELA*, *OsLIC* acts as an antagonistic transcription factor of *OsBZR1* to regulate the expression of *OsIL11* and *OsIBH1*, thus affecting leaf inclination. Our results indicate that *OsRELA* interacts with *OsLIC* and that *OsRELA* can act as an important regulator of *OsLIC* to affect its transcriptional regulation of downstream genes, suggesting that *OsRELA* intersects with the BR signaling pathway by regulating the transcriptional activity of *OsLIC* and is thus involved in the regulation of leaf inclination in rice.

OsRELA is located in the same gene locus as previously reported *DENSE AND ERECT PANICLE 2* (*DEP2*) (Li et al., 2010), *ERECT PANICLE2* (*EP2*) (Zhu et al., 2010) and *SMALL AND ROUND SEED1* (*SRS1*) (Abe et al., 2010). *OsRELA/DEP2/SRS1* encodes a protein of unknown function. Through the analysis of the evolutionary relationship between *OsRELA* and its homologs, we found that it is an ancient gene that is conserved among angiosperms, and there are conserved motifs at the N-terminus and C-terminus. Through the *GUS* reporter gene and RT-qPCR results, we found that *OsRELA* is strongly expressed in young tissues, such as young spikelets, florets and lamina joints, and the amino acid sequence at its N-terminus changed when the gene evolved from gymnosperms to angiosperms. The large difference between gymnosperms and angiosperms is that angiosperms produce seeds within an enclosure, suggesting that gene evolution may be related to this. In addition, no functional analysis has been reported for its three homologs in Arabidopsis, and future research

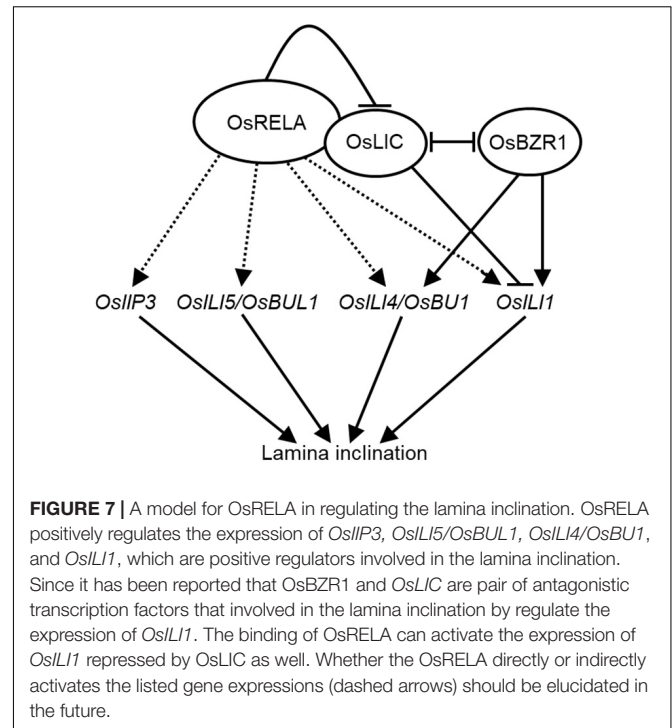


should verify whether these three genes are involved in the regulation of Arabidopsis architecture, siliques or seed size by similar mechanisms.

Notably, the N-terminal amino acid sequences of *OsRELA* homologs in Arabidopsis share high similarity to that of COP1-interacting protein 7 (CIP7). It has been reported that

CONSTITUTIVE PHOTOMORPHOGENIC1 (COP1) acts as an E3 ubiquitin ligase and is able to inhibit photomorphogenesis in the dark by mediating the ubiquitinated degradation of light-inducible transcription factors, such as *HY5*, *HYH*, and *AtMYB21* (Holm et al., 2002; Shin et al., 2002; Srivastava et al., 2015). CIP7 is also localized in the nucleus and may act as a transcription factor to activate light-induced gene expression as well as anthocyanin synthesis and chlorophyll accumulation. However, CIP7 RNA-interfering plants do not have defects in light-inhibited hypocotyl elongation (Yamamoto et al., 1998). To further investigate the possible mechanism by which *OsRELA* exerts transcriptional regulatory functions, we performed sequence alignment analysis of *OsRELA* and *CIP7* and found that their N-terminal sequences may encode a speckle-type BTB/POZ domain. The BTB domain (Broad-Complex, Tramtrack, and Bric a brac) is a multifunctional protein-protein interaction domain involved in many biological processes, including transcriptional regulation (Deweindt et al., 1995), ion channel assembly (Aravind and Koonin, 1999) and ubiquitinated protein degradation (Julian et al., 2019). The BTB domain often combines with other structural domains to form multifunctional proteins, BTB-zinc finger proteins were reported to mediate transcriptional repression by interacting with histone deacetylase complexes *N-CoR* or *SMRT* (Huynh and Bardwell, 1998). *ZBTB24* can specifically bind to the 12-bp DNA motif [CT(G/T)CCAGGACCT] to activate downstream gene expression (Ren et al., 2019), and *BACH1* and *BACH2* are transcriptional regulators that bind to *Maf* recognition elements to coordinate transcription activation and repression in cooperate with *MAFK* (Oyake et al., 1996). *LPA1* has also been reported to be involved in a similar process to regulate *PIN1a* expression in rice (Sun et al., 2019). While our results suggest that *OsRELA* functions as a transcriptional activator, whether *OsRELA* has specific DNA binding activity is unclear, and whether its promoter selection for target genes depends on the interacting transcription factors or related proteins needs further validation. In this study, whether the regulation of *ILL1* family gene expression by *OsRELA* requires the binding of the transcription factor *OsLIC* is unclear. In addition, the specific mechanism of *OsRELA* in regulating gene expression needs to be further evaluated. Whether *OsRELA* regulates gene expression by changing the three-dimensional conformation of chromosomes similar to that of chromatin remodeling factors or regulates the activation or repression of gene expression by recruiting histone modification complexes needs to be further evaluated. Further studies are needed to reveal the specific mechanism of *OsRELA*.

In this study, we identified *OsRELA* through forward genetics, which is an important regulator of leaf angle in rice. As summarized in **Figure 7**, *OsRELA* regulates several lamina inclination-related gene expressions, which have been demonstrated as the positive regulators in rice leaf inclination (Tong and Chu, 2018). Furthermore, *OsRELA* affects leaf angle by influencing the transcriptional regulation of *OsILL1* via interacting and inhibiting *OsLIC*, which antagonizes with *OsBZR1* each other (Zhang et al., 2012), the key transcriptional factor in BR signaling. However, *OsRELA* does not interact with *OsBZR1*, indicating they response to different environmental



or developmental cues to regulate lamina inclination *via* suppressing the *OsLIC* in rice. Collectively, our data not only clarify a new mechanism of leaf inclination regulation but also provide a reference and new genetic resources for future crop improvement.

MATERIALS AND METHODS

Plant Materials and Growth Conditions

In this study, Nipponbare rice (*Oryza sativa* subsp. *japonica*) and Dular rice (*Oryza sativa* L. ssp. *indica*) were used as wild-type controls, and the *rela* mutant was obtained from EMS-induced mutant populations. The F_2 segregation population used for genetic segregation analysis was obtained by crossing the *rela* mutant with Nipponbare. The F_2 segregant population used for map-based cloning was obtained by crossing the *rela* mutant with Dular. The rice materials used in this study were grown in the fields of the Chinese Academy of Agricultural Sciences under natural conditions.

Paraffin Section Analysis

After the mature lamina joints of the wild-type and *rela* mutant were separated, they were rapidly fixed in formaldehyde-acetic acid-alcohol (FAA) at 4°C for 72 h. Subsequently, the samples were dehydrated through a gradient ethanol solution. The dehydrated samples were subjected to a xylene:ethanol clear solution of 1:2, 1:1, and 2:1 and finally transitioned to xylene. The samples were then incubated in a xylene:Paraplast Plus solution (Sigma-Aldrich) solution of 1:1 at 37°C for 48 h. The samples were embedded in Paraplast Plus for 3 days. The samples

were then sectioned into 8- μ m-thick sections by an RM2245 rotary microtome (Leica). After the removal of Paraplast Plus with xylene:ethanol ratios of 2:1, 1:1, and 1:2, the sections were rehydrated with gradient ethanol, followed by safranin-fixed green staining. Images were taken with an ICC50 HD microscope (Leica), and the cell length and cell area were subsequently measured using ImageJ.

Map-Based Cloning of *rela*

A total of 154 primer pairs exhibiting polymorphisms between *Nipponbare* and *Dular* were identified from our primer library. We targeted *OsRELA* between two genetic markers, Indel 7–10 and Indel 7–12, located on the long arm of chromosome 7. By further fine-mapping using the F₂ generation population of 2871 progeny, we targeted the *OsRELA* gene between two newly developed genetic markers. We then performed PCR amplification and sequencing of the genomic sequences of all genes within this 64-kb interval in wild-type and *rela* mutants.

Vector Construction and Plant Transformation

For complementation assays, the putative 2.2-kb promoter region of *OsRELA* was amplified using the OsRELA-Pro primer pairs, and the coding region was amplified using the OsRELA-CDS and OsRELA-CDS Δ C primers and inserted into the pCAMBIA1300 binary vector using *EcoRI/HindIII* restriction sites.

To knock out the *OsRELA* and *OsLIC* genes, we selected 20-bp gene-specific spacer sequences in the coding region and cloned them into the sgRNA-Cas9 vector to obtain *OsRELA-CRISPR* and *OsLIC-CRISPR* vectors.

To obtain *OsRELA* overexpression lines, the promoter of *OsRELA* was amplified by primer OsRELA-Pro, and the full-length CDS was amplified by using primer OsRELA-GFP and inserted into the pCAMBIA1300 binary vector using *EcoRI/HindIII* restriction sites to obtain *proOsRELA:GFP-OsRELA*.

To determine the expression pattern of *OsRELA*, a 2.2-kb region upstream of the ATG start codon was amplified using OsRELA-GUS primers, and the PCR product was cloned into the pCAMBIA1391z binary vector using *HindIII/EcoRI* restriction sites to obtain the *proOsRELA:GUS* vector.

The above vectors were subsequently transformed into wild-type and *rela* mutant *via* Agrobacterium-mediated transformation.

Preparation and Determination of OsRELA Specific Antibodies

An *in vitro* purified OsRELA polypeptide (*Os07g0616000*, 500–740 aa) fragment was injected into rabbits to generate the corresponding polyclonal antibody at ABclonal Technology. The specificity of the polyclonal antibody against OsRELA was subsequently verified by immunoblotting assays using wild-type rice seedlings. Samples were well ground in liquid nitrogen and then incubated with protein extraction buffer (50 mM Tris-HCl at pH 7.5, 150 mM NaCl, 10 mM MgCl₂, 1 mM EDTA, 10%

glycerol, and protease inhibitor cocktail) at 4°C for 15 min. After centrifugation at 4°C for 10 min, the supernatant was boiled for 10 min and separated on a 6% SDS-PAGE gel. The anti-OsRELA polyclonal antibody was diluted at a concentration of 1:2000 and detected by chemiluminescence reagent (GE Health care), and the Rubisco large subunit was used as the endogenous control.

Subcellular Localization and GUS Activity Measurements

To determine the subcellular localization of the OsRELA protein, the 4095-bp coding region was cloned into the pAN580 vector using the *XbaI* restriction site. The *35S:OsRELA-GFP* vector was subsequently introduced into rice protoplasts as previously described (Zhang et al., 2011), and the fluorescence of GFP was visualized using a confocal laser scanning microscope (LSM 980; Zeiss).

Different tissues of *proOsRELA:GUS* transgenic plants were incubated in GUS staining buffer (1 M sodium phosphate, pH 7.0, 0.5 M EDTA, pH 8.0, 10% Triton X-100, 50 mM K₃Fe(CN)₆, 0.1 M X-Gluc) at 37°C after isolation. After 12–16 h, the samples were decolorized using 75% ethanol. The pictures were photographed using an ICC50 HD microscope (Leica).

Bioinformatics Analyses

The sequences of *OsRELA* and *OsLIC* were obtained from The Rice Annotation Project¹. Homologous of *OsRELA* in plants were obtained from the NCBI BLAST server². Multiple sequence alignment was performed using DNAMAN9 with default settings. A neighbor-joining tree of *OsRELA* and its homologs was generated by MEGA7 with 1000 bootstrap replicates. The protein structure analysis was performed using the following software:

HHpred: <https://toolkit.tuebingen.mpg.de/tools/hhpred>

COILS: https://embnet.vital-it.ch/software/COILS_form.html

SeqNLS: <http://mleg.cse.sc.edu/seqNLS/>

RNA Extraction, Real-Time Quantitative PCR, and RNA-seq Analyses

Total RNA was extracted from lamina joints of rice seedlings using TRIzol reagent (Invitrogen). First-strand cDNA synthesis was performed using the PrimeScript 1st strand cDNA Synthesis Kit (6110A). RT-qPCR was performed as previously described (Zhou et al., 2008), and the rice *ubiquitin* gene was used as an internal control.

The differential gene expression analysis of 2-week-old rice seedlings of wild-type and *rela* mutant were performed by Allwegene Technology Inc³.

Yeast Two-Hybrid Assays

The full-length coding region of *OsRELA* was cloned into the pGBKT7 vector as bait, and then yeast two-hybrid screening was performed with a rice cDNA library. The positive clones were

¹<https://rapdb.dna.affrc.go.jp>

²<http://blast.ncbi.nlm.nih.gov/Blast.cgi>

³<http://www.allwegene.com/>

subsequently identified by sequencing. The full-length coding regions of *OsRELA*, *OsLIC*, *OsBZR1*, *RLA1*, *DLT*, and *OsGSK2* were cloned into the corresponding pGBKT7 and pGADT7 vectors using *EcoRI/BamHI* restriction sites. The corresponding bait and prey constructs were cotransformed into the yeast strain AH109 (Clontech) and grown on the selective medium SD-Trp/-Leu. The positive clones were then transferred to the selective medium SD-Trp/-Leu/-His/-Ade.

Bimolecular Fluorescence Complementation Assays

The full-length coding region of *OsRELA* was amplified and cloned into the *pSPYNE* vector using *EcoRI/SalI* to obtain *NY-OsRELA*, and the full-length coding region of *OsLIC* was amplified and cloned into the *pSPYCE* vector using *EcoRI/SalI* to obtain *OsLIC-CY*. *OsRELA-NY/OsLIC-CY*, *OsRELA-NY/pSPYCE*, and *pSPYNE/OsLIC-CY* were cotransformed into rice protoplasts by PEG-mediated transformation. The fluorescence of YFP was visualized using a confocal laser scanning microscope (LSM 980; Zeiss).

Semi-in Vivo Pull-Down Assay

To test the interaction between *OsRELA* and *OsLIC*, the full-length coding region of *OsLIC* was amplified and cloned into pGEX-4T-1 using *EcoRI/XhoI*, and the vector was subsequently transformed into *E. coli* strain BL21 to obtain the *OsLIC-GST* fusion protein. Two-week-old wild-type seedlings were ground in liquid nitrogen and solubilized with 2X protein extraction buffer [100 mM Tris-HCl, pH 7.5, 300 mM NaCl, 2 mM EDTA, pH 8.0, 1% TrionX-100, 10% (v/v) glycerol, and protease inhibitor mixtures (M307; AMRESCO)]. The semi-*in vivo* pull-down assay was performed as previously described (Qiao et al., 2017).

Transient Expression Assay in Rice Protoplasts

In the dual-luciferase assay, the 2.2-kb promoter region of *OsIL11* was cloned upstream of the firefly luciferase gene (*LUC*) in pGreenII 0800-LUC to generate the *OsIL11-LUC* reporter vector. *OsLIC-FLAG*, *OsRELA-FLAG*, *OsRELAΔC-FLAG*, and *FLAG* were cloned into pGreenII 62-SK as effectors using *XbaI/HindIII* restriction sites. The combined reporter and effector vectors were cotransformed into rice protoplasts by PEG-mediated transformation. *Renilla reniformis* (*Ren*) driven by the 35S promoter was used as an internal control. The LUC activity was quantified with a Dual-Luciferase Assay Kit (Promega) following the manufacturer's recommendations, and the relative LUC activity was calculated as the ratio of LUC/*Ren*.

ACCESSION NUMBERS

Sequence data from this article can be found in the database of The Rice Annotation Project (RAP) under the following accession numbers: *OsRELA*, Os07g0616000; *OsLIC*, Os06g0704300; *OsmiR408*, Os01g0322700; *OsmiR528*, Os03g0129400; *OsBEI1b*, Os02g0528200; *OsG*

SL8, Os06g0113150; *OsSTA145*, Os05g0327000; *OsIIP3*, Os02g0575700; *OsOFP14*, Os05g0441400; *OsIL11*, Os04g0641700; *OsIL14* (*OsBU1*), Os06g0226500; *OsIL15* (*OsBUL1*), Os02g0747900; *OsEXPA5*, Os02g0744200; *OsEXPB6*, Os10g0555600; *OsEXPB11*, Os02g0658800; *OsCESA6*, Os07g0252400; *OsCSLF6*, Os08g0160500; *OsGT43*, Os04g0650300; *OsGT8*, Os02g0739400; *OsGUX1L*, Os01g0880200; *OsRX10L*, Os01g0926700; *OsUGA4E*, Os08g0526100 and *UBIQUITIN*, Os03g0234200.

PRIMER SEQUENCES

The primers used are shown in **Supplementary Table 1** and **Supplementary Table 2**.

DATA AVAILABILITY STATEMENT

The datasets presented in this study can be found in online repositories. The names of the repository/repositories and accession number(s) can be found in the article/**Supplementary Material**.

AUTHOR CONTRIBUTIONS

T-gL conceived the project and designed the research. Z-gZ and P-fA conceived the original screening, constructed the mapping population. C-IZ and BX carried out most of the experiments, map-based cloning of *OsRELA* gene, paraffin section, genetic analysis, and chemical parameters. CD completed the protein purification. Z-yS and S-zT performed rice transformation. S-wZ and Z-gZ designed the experiments, analyzed, and wrote the data with C-IZ. All authors contributed to the article and approved the submitted version.

ACKNOWLEDGMENTS

This research was supported by the National Key Research and Development Program of China (2020YFA0907603), National Natural Science Foundation of China (32070283), the Agricultural Science and Technology Innovation Program (CAAS-ZDXT2019003), and the Science Foundation of Hebei Province (C2020205014).

SUPPLEMENTARY MATERIAL

The Supplementary Material for this article can be found online at: <https://www.frontiersin.org/articles/10.3389/fpls.2021.760041/full#supplementary-material>

REFERENCES

- Abe, Y., Mieda, K., Ando, T., Kono, I., Yano, M., Kitano, H., et al. (2010). The SMALL AND ROUND SEED1 (SRS1/DEP2) gene is involved in the regulation of seed size in rice. *Genes Genet. Syst.* 85, 327–339. doi: 10.1266/ggs.85.327
- Aravind, L., and Koonin, E. V. (1999). Fold prediction and evolutionary analysis of the POZ domain: structural and evolutionary relationship with the potassium channel tetramerization domain. *J. Mol. Biol.* 285, 1353–1361. doi: 10.1006/jmbi.1998.2394
- Bai, M. Y., Zhang, L. Y., Gampala, S. S., Zhu, S. W., Song, W. Y., Chong, K., et al. (2007). Functions of OsBZR1 and 14-3-3 proteins in brassinosteroid signaling in rice. *Proc. Natl. Acad. Sci. U. S. A.* 104, 13839–13844. doi: 10.1073/pnas.0706386104
- Bardwell, V. J., and Treisman, R. (1994). The POZ domain: a conserved protein-protein interaction motif. *Genes Dev.* 8, 1664–1677. doi: 10.1101/gad.8.14.1664
- Bian, H., Xie, Y., Guo, F., Han, N., Ma, S., Zeng, Z., et al. (2012). Distinctive expression patterns and roles of the miRNA393/TIR1 homolog module in regulating flag leaf inclination and primary and crown root growth in rice (*Oryza sativa*). *New Phytol.* 196, 149–161. doi: 10.1111/j.1469-8137.2012.04248.x
- Burkhard, P., Stetefeld, J., and Strelkov, S. V. (2001). Coiled coils: a highly versatile protein folding motif. *Trends Cell Biol.* 11, 82–88. doi: 10.1016/s0962-8924(00)01898-5
- Cho, H. T., and Kende, H. (1997). Expression of expansin genes is correlated with growth in deepwater rice. *Plant Cell* 9, 1661–1671. doi: 10.1105/tpc.9.9.1661
- Deweindt, C., Albagli, O., Bernardin, F., Dhordain, P., Quief, S., Lantoine, D., et al. (1995). The LAZ3/BCL6 oncogene encodes a sequence-specific transcriptional inhibitor: a novel function for the BTB/POZ domain as an autonomous repressing domain. *Cell Growth Differ.* 6, 1495–1503.
- Holm, M., Ma, L. G., Qu, L. J., and Deng, X. W. (2002). Two interacting bZIP proteins are direct targets of COP1-mediated control of light-dependent gene expression in Arabidopsis. *Genes Dev.* 16, 1247–1259. doi: 10.1101/gad.969702
- Hong, Z., Ueguchi-Tanaka, M., Umemura, K., Uozu, S., Fujioka, S., Takatsuto, S., et al. (2003). A rice brassinosteroid-deficient mutant, *ebisu dwarf* (d2), is caused by a loss of function of a new member of cytochrome P450. *Plant Cell* 15, 2900–2910. doi: 10.1105/tpc.014712
- Huynh, K. D., and Bardwell, V. J. (1998). The BCL-6 POZ domain and other POZ domains interact with the co-repressors N-CoR and SMRT. *Oncogene* 17, 2473–2484. doi: 10.1038/sj.onc.1202197
- Jang, S., An, G., and Li, H. Y. (2017). Rice leaf angle and grain size are affected by the OsBUL1 transcriptional activator complex. *Plant Physiol.* 173, 688–702. doi: 10.1104/pp.16.01653
- Julian, J., Coego, A., Lozano-Juste, J., Lechner, E., Wu, Q., Zhang, X., et al. (2019). The MATH-BTB BPM3 and BPM5 subunits of Cullin3-RING E3 ubiquitin ligases target PP2CA and other clade A PP2Cs for degradation. *Proc. Natl. Acad. Sci. U. S. A.* 116, 15725–15734. doi: 10.1073/pnas.1908677116
- Komatsu, K., Maekawa, M., Ujiie, S., Satake, Y., Furutani, I., Okamoto, H., et al. (2003). LAX and SPA: major regulators of shoot branching in rice. *Proc. Natl. Acad. Sci. U. S. A.* 100, 11765–11770. doi: 10.1073/pnas.1932414100
- Kuluev, B. R., Kniazev, A. V., Nikonov Iu, M., and Chemeris, A. V. (2014). [Role of the expansin genes NtEXPA1 and NtEXPA4 in the regulation of cell extension during tobacco leaf growth]. *Genetika* 50, 560–569.
- Lee, J., Park, J. J., Kim, S. L., Yim, J., and An, G. (2007). Mutations in the rice liguleless gene result in a complete loss of the auricle, ligule, and laminar joint. *Plant Mol. Biol.* 65, 487–499. doi: 10.1007/s11103-007-9196-1
- Li, F., Liu, W., Tang, J., Chen, J., Tong, H., Hu, B., et al. (2010). Rice DENSE AND ERECT PANICLE 2 is essential for determining panicle outgrowth and elongation. *Cell Res.* 20, 838–849. doi: 10.1038/cr.2010.69
- Li, P. J., Wang, Y. H., Qian, Q., Fu, Z. M., Wang, M., Zeng, D. L., et al. (2007). LAZY1 controls rice shoot gravitropism through regulating polar auxin transport. *Cell Res.* 17, 402–410. doi: 10.1038/cr.2007.38
- Mori, M., Nomura, T., Ooka, H., Ishizaka, M., Yokota, T., Sugimoto, K., et al. (2002). Isolation and characterization of a rice dwarf mutant with a defect in brassinosteroid biosynthesis. *Plant Physiol.* 130, 1152–1161. doi: 10.1104/pp.007179
- Ning, J., Zhang, B., Wang, N., Zhou, Y., and Xiong, L. (2011). Increased leaf angle1, a Raf-like MAPKKK that interacts with a nuclear protein family, regulates mechanical tissue formation in the Lamina joint of rice. *Plant Cell* 23, 4334–4347. doi: 10.1105/tpc.111.093419
- Oyake, T., Itoh, K., Motohashi, H., Hayashi, N., Hoshino, H., Nishizawa, M., et al. (1996). Bach proteins belong to a novel family of BTB-basic leucine zipper transcription factors that interact with MafK and regulate transcription through the NF-E2 site. *Mol. Cell. Biol.* 16, 6083–6095. doi: 10.1128/MCB.16.11.6083
- Qiao, S., Sun, S., Wang, L., Wu, Z., Li, C., Li, X., et al. (2017). The RLA1/SMOS1 transcription factor functions with OsBZR1 to regulate brassinosteroid signaling and rice architecture. *Plant Cell* 29, 292–309. doi: 10.1105/tpc.16.00611
- Ren, R., Hardikar, S., Horton, J. R., Lu, Y., Zeng, Y., Singh, A. K., et al. (2019). Structural basis of specific DNA binding by the transcription factor ZBTB24. *Nucleic Acids Res.* 47, 8388–8398. doi: 10.1093/nar/gkz557
- Ruan, W., Guo, M., Xu, L., Wang, X., Zhao, H., Wang, J., et al. (2018). An SPX-RLI1 module regulates leaf inclination in response to phosphate availability in rice. *Plant Cell* 30, 853–870. doi: 10.1105/tpc.17.00738
- Sakamoto, T., Morinaka, Y., Ohnishi, T., Sunohara, H., Fujioka, S., Ueguchi-Tanaka, M., et al. (2006). Erect leaves caused by brassinosteroid deficiency increase biomass production and grain yield in rice. *Nat. Biotechnol.* 24, 105–109. doi: 10.1038/nbt1173
- Shin, B., Choi, G., Yi, H., Yang, S., Cho, I., Kim, J., et al. (2002). AtMYB21, a gene encoding a flower-specific transcription factor, is regulated by COP1. *Plant J.* 30, 23–32. doi: 10.1046/j.1365-313x.2002.01264.x
- Song, Y., You, J., and Xiong, L. (2009). Characterization of OsIAA1 gene, a member of rice Aux/IAA family involved in auxin and brassinosteroid hormone responses and plant morphogenesis. *Plant Mol. Biol.* 70, 297–309. doi: 10.1007/s11103-009-9474-1
- Srivastava, A. K., Senapati, D., Srivastava, A., Chakraborty, M., Gangappa, S. N., and Chattopadhyay, S. (2015). Short hypocotyl in white light1 interacts with elongated Hypocotyl5 (HY5) and Constitutive Photomorphogenic1 (COP1) and promotes COP1-mediated degradation of HY5 during arabidopsis seedling development. *Plant Physiol.* 169, 2922–2934. doi: 10.1104/pp.15.01184
- Sun, Q., Li, T. Y., Li, D. D., Wang, Z. Y., Li, S., Li, D. P., et al. (2019). Overexpression of loose plant architecture 1 increases planting density and resistance to sheath blight disease via activation of PIN-FORMED 1a in rice. *Plant Biotechnol. J.* 17, 855–857. doi: 10.1111/pbi.13072
- Sun, S., Chen, D., Li, X., Qiao, S., Shi, C., Li, C., et al. (2015). Brassinosteroid signaling regulates leaf erectness in *Oryza sativa* via the control of a specific U-type cyclin and cell proliferation. *Dev. Cell* 34, 220–228. doi: 10.1016/j.devcel.2015.05.019
- Tanabe, S., Ashikari, M., Fujioka, S., Takatsuto, S., Yoshida, S., Yano, M., et al. (2005). A novel cytochrome P450 is implicated in brassinosteroid biosynthesis via the characterization of a rice dwarf mutant, *dwarf11*, with reduced seed length. *Plant Cell* 17, 776–790. doi: 10.1105/tpc.104.024950
- Tanaka, A., Nakagawa, H., Tomita, C., Shimatani, Z., Ohtake, M., Nomura, T., et al. (2009). BRASSINOSTEROID UPREGULATED1, encoding a helix-loop-helix protein, is a novel gene involved in brassinosteroid signaling and controls bending of the lamina joint in rice. *Plant Physiol.* 151, 669–680. doi: 10.1104/pp.109.140806
- Tong, H., and Chu, C. (2018). Functional specificities of brassinosteroid and potential utilization for crop improvement. *Trends Plant Sci.* 23, 1016–1028. doi: 10.1016/j.tplants.2018.08.007
- Wang, B., Smith, S. M., and Li, J. (2018). Genetic regulation of shoot architecture. *Annu. Rev. Plant Biol.* 69, 437–468. doi: 10.1146/annurev-arplant-042817-040422
- Wang, L., Xu, Y., Zhang, C., Ma, Q., Joo, S. H., Kim, S. K., et al. (2008). OsLIC, a novel CCH-type zinc finger protein with transcription activation, mediates rice architecture via brassinosteroids signaling. *PLoS One* 3:e3521. doi: 10.1371/journal.pone.0003521
- Wang, Y., and Li, J. (2011). Branching in rice. *Curr. Opin. Plant Biol.* 14, 94–99. doi: 10.1016/j.pbi.2010.11.002
- Yamamoto, Y. Y., Matsui, M., Ang, L. H., and Deng, X. W. (1998). Role of a COP1 interactive protein in mediating light-regulated gene expression in arabidopsis. *Plant Cell* 10, 1083–1094. doi: 10.1105/tpc.10.7.1083
- Yamamoto, C., Ihara, Y., Wu, X., Noguchi, T., Fujioka, S., Takatsuto, S., et al. (2000). Loss of function of a rice brassinosteroid insensitive1 homolog prevents internode elongation and bending of the lamina joint. *Plant Cell* 12, 1591–1606. doi: 10.1105/tpc.12.9.1591

- Zhang, C., Xu, Y., Guo, S., Zhu, J., Huan, Q., Liu, H., et al. (2012). Dynamics of brassinosteroid response modulated by negative regulator LIC in rice. *PLoS Genet.* 8:e1002686. doi: 10.1371/journal.pgen.1002686
- Zhang, L. Y., Bai, M. Y., Wu, J., Zhu, J. Y., Wang, H., Zhang, Z., et al. (2009). Antagonistic HLH/bHLH transcription factors mediate brassinosteroid regulation of cell elongation and plant development in rice and Arabidopsis. *Plant Cell* 21, 3767–3780. doi: 10.1105/tpc.109.070441
- Zhang, S., Wang, S., Xu, Y., Yu, C., Shen, C., Qian, Q., et al. (2015). The auxin response factor, OsARF19, controls rice leaf angles through positively regulating OsGH3-5 and OsBRI1. *Plant Cell Environ.* 38, 638–654. doi: 10.1111/pce.12397
- Zhang, S. W., Li, C. H., Cao, J., Zhang, Y. C., Zhang, S. Q., Xia, Y. F., et al. (2009). Altered architecture and enhanced drought tolerance in rice via the down-regulation of indole-3-acetic acid by TLD1/OsGH3.13 activation. *Plant Physiol.* 151, 1889–1901. doi: 10.1104/pp.109.146803
- Zhang, Y., Su, J., Duan, S., Ao, Y., Dai, J., Liu, J., et al. (2011). A highly efficient rice green tissue protoplast system for transient gene expression and studying light/chloroplast-related processes. *Plant Methods* 7:30. doi: 10.1186/1746-4811-7-30
- Zhao, S. Q., Xiang, J. J., and Xue, H. W. (2013). Studies on the rice LEAF INCLINATION1 (LC1), an IAA-amido synthetase, reveal the effects of auxin in leaf inclination control. *Mol. Plant* 6, 174–187. doi: 10.1093/mp/sss064
- Zhou, J., Jiao, F., Wu, Z., Li, Y., Wang, X., He, X., et al. (2008). OsPHR2 is involved in phosphate-starvation signaling and excessive phosphate accumulation in shoots of plants. *Plant Physiol.* 146, 1673–1686. doi: 10.1104/pp.107.111443
- Zhou, L. J., Xiao, L. T., and Xue, H. W. (2017). Dynamic cytology and transcriptional regulation of rice lamina joint development. *Plant Physiol.* 174, 1728–1746. doi: 10.1104/pp.17.00413
- Zhu, K., Tang, D., Yan, C., Chi, Z., Yu, H., Chen, J., et al. (2010). Erect panicle2 encodes a novel protein that regulates panicle erectness in indica rice. *Genetics* 184, 343–350. doi: 10.1534/genetics.109.112045

Conflict of Interest: The authors declare that the research was conducted in the absence of any commercial or financial relationships that could be construed as a potential conflict of interest.

Publisher's Note: All claims expressed in this article are solely those of the authors and do not necessarily represent those of their affiliated organizations, or those of the publisher, the editors and the reviewers. Any product that may be evaluated in this article, or claim that may be made by its manufacturer, is not guaranteed or endorsed by the publisher.

Copyright © 2021 Zhu, Xing, Teng, Deng, Shen, Ai, Lu, Zhang and Zhang. This is an open-access article distributed under the terms of the Creative Commons Attribution License (CC BY). The use, distribution or reproduction in other forums is permitted, provided the original author(s) and the copyright owner(s) are credited and that the original publication in this journal is cited, in accordance with accepted academic practice. No use, distribution or reproduction is permitted which does not comply with these terms.