



# Effects of Hydrological Regime on Foliar Decomposition and Nutrient Release in the Riparian Zone of the Three Gorges Reservoir, China

Zhangting Chen<sup>1,2</sup>, Muhammad Arif<sup>1</sup>, Chaoying Wang<sup>3</sup>, Xuemei Chen<sup>1</sup> and Changxiao Li<sup>1\*</sup>

<sup>1</sup> Key Laboratory of Eco-Environments in the Three Gorges Reservoir Region (Ministry of Education), State Cultivation Base of Eco-Agriculture for Southwest Mountainous Land, College of Life Sciences, Southwest University, Chongqing, China,

<sup>2</sup> School of Tourism Management, Guilin Tourism University, Guilin, China, <sup>3</sup> Chongqing City Management College, Chongqing, China

## OPEN ACCESS

### Edited by:

Kai Yue,  
Fujian Normal University, China

### Reviewed by:

Petr Hedenec,  
Fujian Agriculture and Forestry  
University, China  
Zhenfeng Xu,  
Sichuan Agricultural University, China

### \*Correspondence:

Changxiao Li  
lichangx@swu.edu.cn

### Specialty section:

This article was submitted to  
Functional Plant Ecology,  
a section of the journal  
Frontiers in Plant Science

Received: 31 January 2021

Accepted: 09 April 2021

Published: 26 May 2021

### Citation:

Chen Z, Arif M, Wang C, Chen X  
and Li C (2021) Effects of Hydrological  
Regime on Foliar Decomposition  
and Nutrient Release in the Riparian  
Zone of the Three Gorges Reservoir,  
China. *Front. Plant Sci.* 12:661865.  
doi: 10.3389/fpls.2021.661865

Foliar decomposition has significant effects on nutrient cycling and the productivity of riparian ecosystems, but studies on the impact of related hydrological dynamics have been lacking. Here, the litterbag method was carried out to compare decomposition and nutrient release characteristics *in situ*, including three foliage types [two single-species treatments using *Taxodium distichum* (L.) Rich., *Salix matsudana* Koidz., or a mixture with equal proportions of leaf mass], three flooding depths (unflooded, shallow flooding, and deep flooding), two hydrodynamic processes (continuous flooding and flooded-to-unflooded hydrological processes), and one hydrological cycle (1 year) in the riparian zone of the Three Gorges Reservoir. The results showed that both hydrological processes significantly promoted foliage decomposition, and all foliage types decomposed the fastest in a shallow flooding environment ( $P < 0.05$ ). The mixed-species samples decomposed most quickly in the flooded hydrological process in the first half of the year and the unflooded hydrological process in the second half of the year. Flooding also significantly promoted the release of nutrients ( $P < 0.05$ ). Mixed-species samples had the fastest release rates of carbon and nutrients in the flooded hydrological process in the first half of the year and the unflooded hydrological process in the second half of the year. Foliar decomposition was also closely related to environmental factors, such as water depth, temperature, and hydrological processes. Our research clarified the material cycling and energy flow process of the riparian ecosystem in the Three Gorges Reservoir area. It also provided a new reference for further understanding of foliar decomposition and nutrient release under different hydrological environments.

**Keywords:** foliar decomposition, nutrient release, hydrological regime, mixed species, riparian zone, Three Gorges Reservoir

## INTRODUCTION

As the largest hydroelectric power project in human history, the Three Gorges Reservoir (TGR) has always received widespread attention (Chen et al., 2020a,b; Arif et al., 2021; He et al., 2021; Zheng et al., 2021). When compared with other reservoirs, the new hydrologic regime of the TGR reverses the variation of the natural dry/flood pattern (rising in winter and falling in summer), with a large

fluctuation range (145–175 m a.s.l., up to 30 m) and a prolonged flooding duration each year (Ye et al., 2011; Li et al., 2013; Xu et al., 2013; Yuan et al., 2013; Holbach et al., 2014). This dramatically alters the conditions of riparian ecosystems and results in the formation of a reservoir water-level fluctuation zone (i.e., seasonal fluctuations causing the land to be periodically flooded and dried, and the formation of an alternating dry and wet land–water transition zone, which is defined as the area between the normal water level) (Zhang and Lou, 2011; Yang et al., 2012; Zhang, 2018; Arif et al., 2020). Therefore, the riparian ecosystem in the TGR has both abundant resources in the terrestrial ecosystem and periodic hydrological fluctuations in the aquatic ecosystem, creating a huge area with a unique biogeochemical function. Moreover, riparian ecosystems, as centers of biodiversity and links between terrestrial and aquatic systems, also play an important role in material circulation, energy flow, and maintaining the ecological structure and functional balance (Nilsson and Svedmark, 2002; New and Xie, 2008; González et al., 2017).

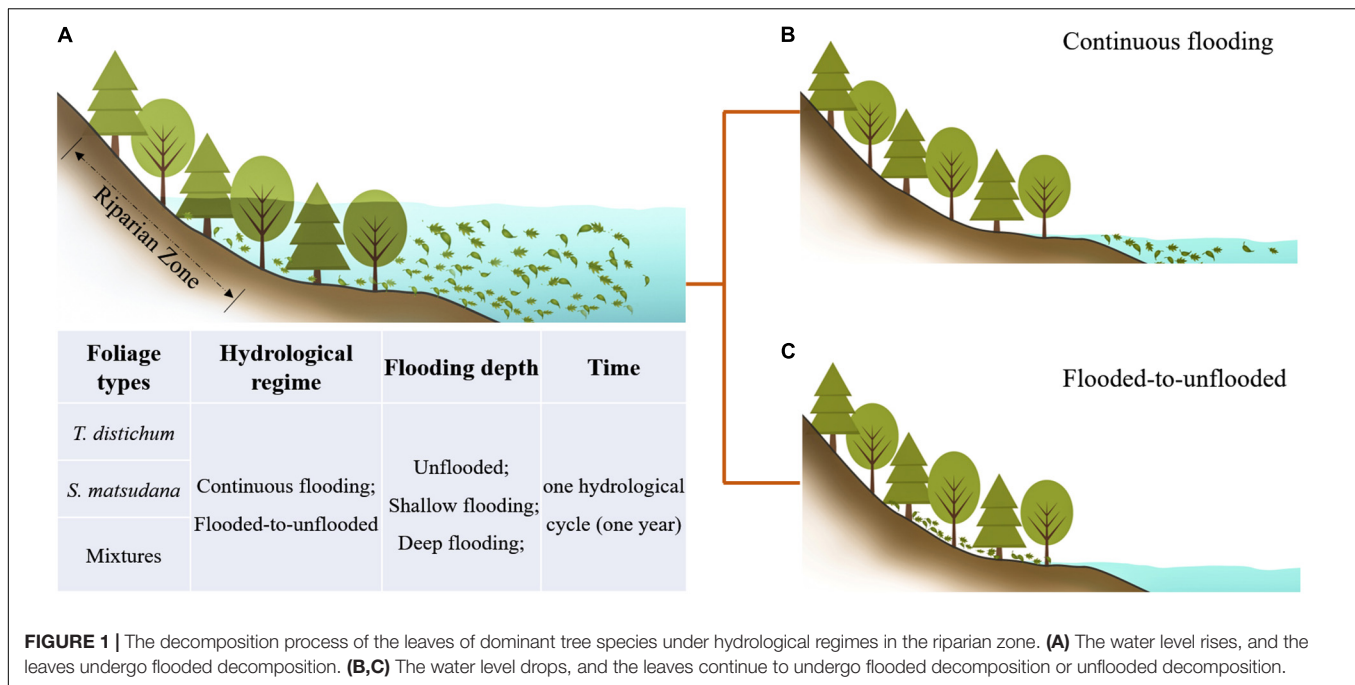
Due to the unique hydrological regime in the TGR area, the plants within have a special growth pattern. When the water level drops in spring, the trees begin to recover and reach the peak of growth in summer. As the water level rises in autumn, the trees are flooded continuously in a cycle that repeats each year. It is worth noting that when the water level rises, the leaves of the trees are inevitably submerged and then decompose; when the water level drops half a year later, the leaves that have not been completely decomposed may flow downstream with the water and continue to be decomposed in the waterbody, or they may stay on the riparian land and undergo dry condition decomposition. Therefore, with the fluctuation of the water level in the TGR area, the leaves of these plants are subject to periodic continuous flooding or a decomposition environment that alternates between wet–dry (Figure 1). Similarly, when the level rises, the leaves of different tree species are submerged simultaneously and jointly complete the entire process of decomposition, which is what we usually call mixed decomposition. Most studies on different foliage types compared with the decomposition of a single species, which cannot fully and accurately reflect the actual situation of a natural ecosystem. Studies of mixed-species samples have mostly been carried out in terrestrial or aquatic environments independently; a few studies have addressed the decomposition of mixed-species samples in a region that has both aquatic and terrestrial characteristics in the same environment. The effects of hydrological dynamics on foliage decomposition remain unclear, especially in a riparian zone of the TGR area with such a huge land–water interlaced area. This is not conducive to our understanding of the material cycle and energy flow process of the riparian ecosystem.

Foliage decomposition in streams and rivers is a vital process linking ecosystem nutrient cycling, energy transfer, and trophic interactions (Lecerf et al., 2007; Kominoski et al., 2011; Lidman et al., 2017). Many studies have shown that the decomposition of leaves is related to the environmental conditions around them and their physical and chemical properties, such as leaf quality, flooding depth, temperature, nutrient content, and

dissolved oxygen (Kominoski et al., 2007; Lecerf et al., 2007, 2011; Ferreira and Chauvet, 2011). Among them, the depth of flooding is an important extrinsic environmental factor that controls foliage decomposition and nutrient release (Sun et al., 2012; Zhang et al., 2019). The influence of water depth on decomposition is mainly reflected in that with the change in water depth, water environmental conditions, such as temperature, dissolved oxygen, redox conditions, and illumination intensity will change, which may further affect the activity of decomposing microorganisms and, thus, affect leaf decomposition (Wallis and Raulings, 2011; Xie et al., 2016). One study has shown that the decomposition rate of leaves decreases with the increase in water depth (Xie et al., 2016), but other studies have shown that water depth has no significant effect on the decomposition rate of leaves (Wright et al., 2013; Arroita et al., 2015). It can be seen that the effect of water depth on the decomposition rate of plants will be different due to changes in species, the decomposition of the microenvironment (water flooding depth), and other changes. In addition, the alternating wet–dry environment also has a certain impact on the decomposition of leaves, mainly due to the extent and duration of flooding (Anderson and Smith, 2002; Capps et al., 2011; Sun et al., 2012; Yu et al., 2020). However, a few studies have addressed the decomposition of different woody plants under different flooding depths and wet–dry environments.

Besides being affected by environmental factors, litter decomposition rates also depend significantly on the characteristics of the litter (Makkonen et al., 2012; Xie et al., 2017; Hoerber et al., 2020). Generally, leaves with a small number of structural macromolecules (lignin and cellulose) and higher nitrogen (N) and phosphorus (P) content are conducive to the colonization of microorganisms, and their decomposition rate is usually higher (Kalburtji et al., 1999; Das et al., 2008; Zhang et al., 2014; Alvim et al., 2015). Some studies have also found that the decomposition rate of soft green leaves with a large surface area is higher than that of hard coniferous litters (Fonte and Schowalter, 2004; Li et al., 2009; Wang et al., 2016). The release dynamics of N and P in the foliage was also the key link of nutrient flow in soil–water (Zhang et al., 2016). To identify the dominant energy pathways and nutrient dynamics in the vast transition zone between terrestrial/aquatic ecosystems of the riparian area, it is imperative to investigate the processing of foliage decomposition and organic matter in such a huge area of the TGR.

According to the actual hydrological conditions of the TGR area, we set up a field decomposition experiment of one hydrological cycle (1 year), including two hydrological regimes (continuous flooding and flooded-to-unflooded hydrological processes), three flooding depths (unflooded, shallow flooding, and deep flooding), and two dominant afforestation tree species [*Taxodium distichum* (L.) Rich., and *Salix matsudana* Koidz.] and their mixtures with equal proportions representing the riparian zone of the TGR. The objectives of this study were to (1) investigate the decomposition processes and rates of the dominant plant species in the riparian zone of the TGR under the two hydrological regimes; and (2) compare the nutrient release of single and mixed-species samples under different flooding depths, and clarify the material cycling and energy flow processes of the riparian ecosystem in the TGR area, providing a new



**FIGURE 1** | The decomposition process of the leaves of dominant tree species under hydrological regimes in the riparian zone. **(A)** The water level rises, and the leaves undergo flooded decomposition. **(B,C)** The water level drops, and the leaves continue to undergo flooded decomposition or unflooded decomposition.

reference for further understanding the decomposition process of leaves and the dynamic characteristics of nutrient release in different hydrological environments.

## MATERIALS AND METHODS

### Study Site

The study was conducted at a revegetation demonstration site of the Ruxi watershed of Zhong County, Chongqing Municipality (N30°24'16" and E108°08'03"), near the riparian zone of the TGR. After the TGR reached an average water storage level of 175 m in 2010, a very large area of land–water ecotone formed, covering an area of nearly 350 km<sup>2</sup> (Yangtze River Water Resources Commission, 1999; Wang, 2003; Li et al., 2013; Ren et al., 2016).

Considering the tolerance limit of trees (poor survival below 165 m) and the safety of the river channel, all trees are planted within 165–175 m of the upper part of the riparian zone in a mixed planting with row spacing of 1 m × 1 m. The trees of the study area were dominated by *Taxodium ascendens* Brongn, *Taxodium distichum* (L.) Rich., and *Salix matsudana* Koidz. The Ruxi River Basin belongs to the center of the TGR area and is also an important shipping channel. In order to ensure the safety, accuracy, and operability of the experiment, the decomposition experiment site was selected in an artificial reservoir connected to the Ruxi River (with an area of more than 700 m<sup>2</sup>). The reservoir and Ruxi River are separated by only one artificial dam, and the water of the reservoir flows directly to the Ruxi River. This subtropical southeast monsoon region experiences a humid (relative air humidity of 80%) and a mountainous climate with a mean annual temperature of 18.2°C. The annual sunshine time is

1,327.5 h, and the number of frost-free days is 341 days. Soils are dominated by purple soil.

### Experimental Design

According to the actual hydrological conditions of the TGR, a field foliage decomposition experiment using a litterbag method lasted for a whole year, which is one hydrological cycle, coinciding with the time when the water level rises in the riparian zone of the TGR. Because *T. distichum* and *T. ascendens* belong to the same genus and have many similar features, we chose the coniferous species *T. distichum* and the broad-leaved species *S. matsudana* for the experiments; the mixture used equal proportions of leaf mass from these two species. Trees at different elevations have different degrees of flooding. In order to analyze the nutrient release of plants in different environments, we set up three flooding depth treatments, 0.5 m to represent shallow flooding (SF) and 5 m to represent deep flooding (DF), as well as an unflooded environment as a control (CK). The litterbags of the samples were then randomly divided into five experimental treatments of CK, SF, DF, SF-CK, and DF-CK (CK, unflooded; SF, 0.5 m shallow flooding; DF, 5-m-deep flooding; SF-CK, first half a year SF followed by half a year CK; and DF-CK, first half a year DF followed by half a year CK, relative to the water surface), which simulated the decomposition environment of continuous flooding or flooded-to-unflooded hydrological processes in the TGR area (Figure 1). The SF-CK and DF-CK treatments are referred to collectively as the flooded-to-unflooded treatments below. In September 2017, 15 g of single species of fresh leaves of *T. distichum*, 15 g of single species of fresh leaves of *S. matsudana*, and a mixture of the two samples (*T. distichum* + *S. matsudana*) of equal mass (7.5 + 7.5 g) were prepared and placed in each nylon litterbag (20 cm × 20 cm with a 0.25-mm mesh size). Ten sampling dates, four replications, and a total of 516 samples

were selected to monitor the effects of hydrological regimes on foliage decomposition and nutrient release. To assess the initial dried weights, an additional 12 samples of each foliage type combinations were prepared. We placed 120 litterbags in the field (CK); 360 litterbags were placed at SF and DF of the reservoir on September 25, 2017; 6 months later, 120 samples of them were taken from the water and placed on the CK next to the reservoir to experience unfloded decomposition. The other samples remained in the water until the experiment ended for a total of 1 year. After that, sediment or invertebrates were removed from the litterbags at each sampling time; the retrieved samples were oven-dried at 65°C for 48 h to determine dry mass and nutrient concentrations. During the decomposition period, the air and water temperature of the sample site were concurrently recorded at each sampling date using a Hydrolab DS5 water quality multiparameter monitor (Hydrolab-Hach Corp., Loveland, CO, United States) (Table 1).

## Statistical Analysis

The negative exponential decay model proposed by Olson (1963) was used to fit the leaf litter decomposition model:

$$y = ae^{-kt},$$

where  $a$  is the fitting parameter,  $k$  is the decomposition coefficient of the litter, and  $t$  is the decomposition time (a).

The dry mass remaining (MR) of foliage was measured using the method of Xie et al. (2017):

$$\text{MR (\%)} = W_t / W_0 \times 100\%.$$

The nutrient accumulation index (NAI) of each element during foliage decomposition was calculated using the method of Chen et al. (2017):

$$\text{NAI} = (W_t \times X_t) / (W_0 \times X_0) \times 100\%.$$

where  $W_t$  is the remaining mass at time  $t$  (g),  $X_t$  is the nutrient concentration at time  $t$  (g/kg),  $W_0$  is the initial dry mass (g), and  $X_0$  is the initial nutrient concentration (g/kg).

The effects of foliage types, experimental treatment, and decomposition time on the mass and nutrient remaining were revealed by repeat measurements of analysis of variance (ANOVA). If the data did not satisfy the Mauchly sphericity assumption, the more robust Greenhouse–Geisser results for degrees of freedom after correction were used. We used univariate regression analyses with the mass remaining as the response variable and the environment physicochemistry as the predictor variable to explore their relationships. To explore the influence of the hydrological regimes among decomposition periods and the mass remaining and nutrient release during decomposition periods for each foliage type

in a given environment, we used a one-way ANOVA to explicitly assess the effects of the foliage types and decomposition period. The exponential regression was used to fit the index of mass remaining and nutrient remaining among experimental treatments to decomposition time. Where the ANOVA results were significant at  $P < 0.05$ , differences among means were determined using Duncan's honestly significant difference test. The statistical analyses were carried out using the SPSS 22.0 (SPSS Inc., Chicago, IL, United States) for Microsoft Windows.

## RESULTS

### Foliage Decomposition Under Different Hydrological Conditions

The mass remaining (MR) on the foliage types, decomposition time, experimental treatment, and their interactions were very significant ( $p < 0.001$ ; Table 2). The MR decreased significantly with the increase in decomposition time ( $p < 0.05$ ), and the decomposition of all foliage types in each experimental treatment showed the fastest mass loss at the beginning of the decomposition, followed by a gradual slowing down (Figure 2). During the decomposition process in the first half of the year (0–180 days), the leaves of *T. distichum*, *S. matsudana*, and their mixtures decomposed much faster in the flooded environment (both SF and DF) than in the CK ( $p < 0.05$ ) (Figure 2). Regardless of the experimental treatment, the decomposition rate of the mixed species was always the fastest in the first half of the year, and the decomposition rate ( $k'$ ,  $\text{g}\cdot\text{g}^{-1}\cdot\text{day}^{-1}$ ) of CK, SF, and DF reached 3.48, 7.49, and 6.04, respectively (Table 3). Then during the decomposition process in the second half of the year (180–360 days), the experimental treatment was divided into two hydrological processes: continuous flooding decomposition and flooded-to-unfloded decomposition. As in the first half of the year, the decomposition rate of the two hydrological processes was significantly greater than that of CK ( $p < 0.05$ ); that is, flooding significantly promoted foliage decomposition (Figure 2). The decomposition rate of each foliage type that continued under flooding decomposition (SF and DF) was significantly greater than that of the dry decomposition environment (SF-CK and DF-CK) ( $p < 0.05$ ). Except for the CK and SF environments, the decomposition rates ( $k'$ ,  $\text{g}\cdot\text{g}^{-1}\cdot\text{day}^{-1}$ ) of the mixed-species in the second half of the year were also the fastest, reached 2.52, 1.96, and 1.38 in the DF, SF-CK, and DF-CK environments, respectively (Table 3).

**TABLE 1** | The average, maximum, and minimum of air temperature, water temperature, dissolved oxygen, and water conductivity during the experimental period.

Water treatments	T (°C)			DO (mg·L <sup>-1</sup> )			WC (μS·m <sup>-1</sup> )		
	Ave.	Maximum	Minimum	Ave.	Maximum	Minimum	Ave.	Maximum	Minimum
CK	23.6	36.7	11.4				409.3	478	374.3
SF	21.6	36.6	9.0	15.2	21.8	11.3	406.2	489.6	325.4
DF	15.7	22.2?	9.1	5.7	9.8	3.4	402.2	490.2	301.1

CK, unfloded; SF, shallow flooding; DF, deep flooding.



**TABLE 2** | Analysis of variance (ANOVA) results for the foliage and TOC, TN, and TP remaining during the decomposition process.

Source of variation	F-value			
	MR	CR	NR	PR
Foliage type	554.50	158.06	58.04	18.59
Experimental treatment	2,020.25	1,115.86	568.88	1,630.63
Time	4,419.01	2,727.58	946.27	2,640.88
Foliage type × experimental treatment	15.69	8.57	6.75	45.80
Foliage type × time	12.91	9.45	3.06	8.50
Time × experimental treatment	44.38	24.21	19.98	53.10
Foliage type × time × experimental treatment	2.92	3.11	1.86	2.85

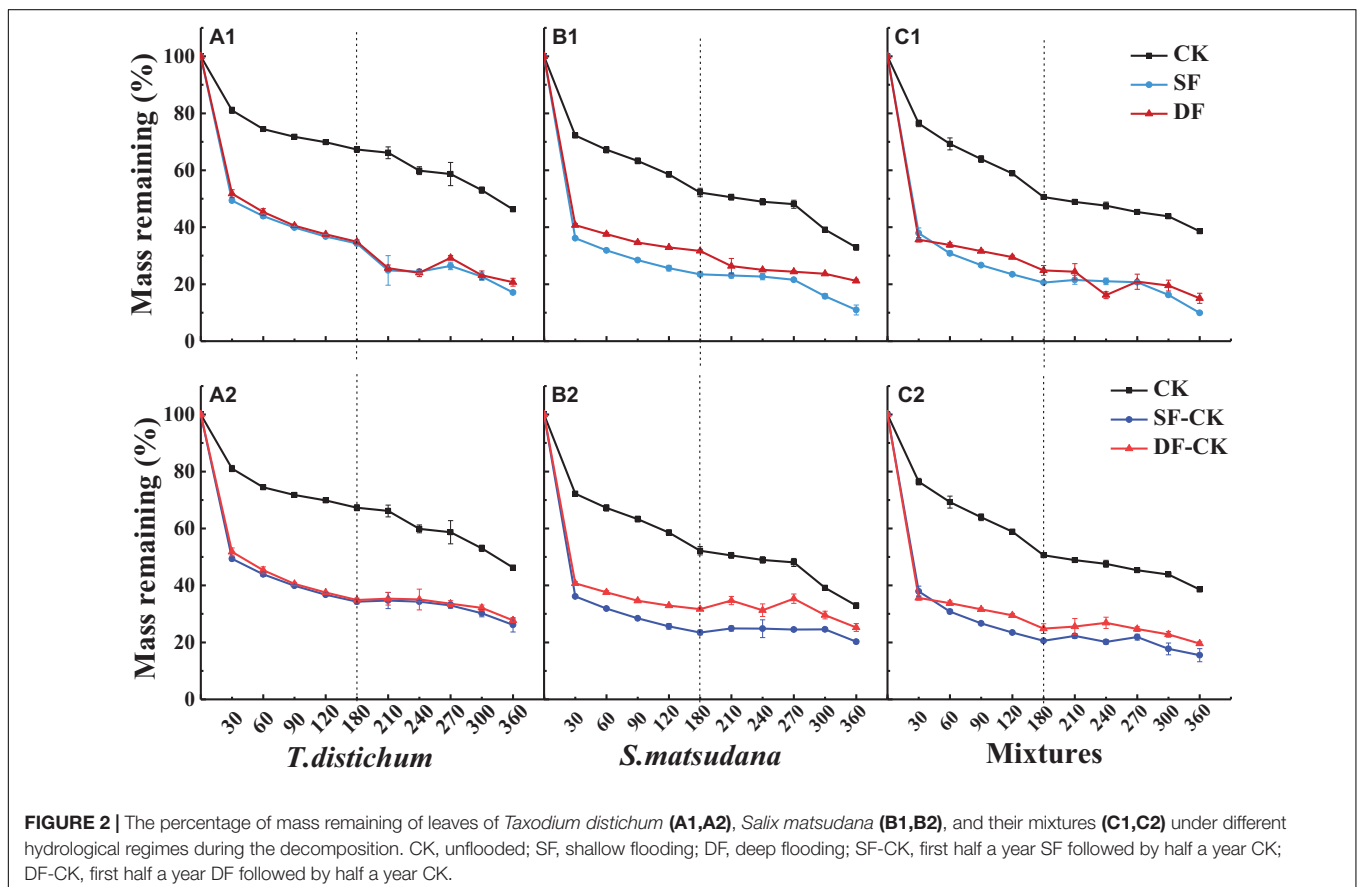
MR, mass remaining; CR, total carbon remaining; NR, nitrogen remaining; PR, phosphorus remaining; all  $P < 0.001$ .

The amount of foliage mass remaining was significantly related to many measured environmental factors, but there were differences between different experimental treatments (Table 4). In the first half of the decomposition period, the mass remaining of all foliage types were significantly positively correlated with temperature, while the electrical conductivity, pH, and dissolved oxygen in the SF and DF environments were significantly

negatively correlated with the mass remaining. In the second half of the decomposition period, under continuous flooding of the SF and DF environments, the mass remaining of all foliage types were significantly positively correlated with electrical conductivity and dissolved oxygen. The mass remaining of the leaves of *T. distichum* in the SF and DF environments, and leaves of *S. matsudana* and mixtures in the DF environments were also significantly positively correlated with pH. However, in the SF-CK and DF-CK environments, the mass remaining of each foliage type was not significantly correlated with environmental factors (Table 4).

## Nutrient Release Under Different Hydrological Conditions

The nutrients remaining in the foliage types, decomposition time, experimental treatments, and their interactions were very significant ( $p < 0.001$ ; Table 2). During the decomposition process in the first half of the year (0–180 days), the TOC and TN release rate of mixed species was the fastest under CK and SF environments, while in the DF environment, the *T. distichum* was the fastest. The TP release rate of the three foliage types was faster than that of TOC and TN. In the CK and DF environments, the TP release rate ( $k'$ ,  $\text{g}\cdot\text{g}^{-1}\cdot\text{day}^{-1}$ ) of *T. distichum* was the fastest, reaching 4.04 and 8.62, respectively, while under SF environment, the TP release rate of mixed species was the fastest, reaching 9.21 (Table 5). Then in the second half of the decomposition period



**FIGURE 2** | The percentage of mass remaining of leaves of *Taxodium distichum* (A1,A2), *Salix matsudana* (B1,B2), and their mixtures (C1,C2) under different hydrological regimes during the decomposition. CK, unflooded; SF, shallow flooding; DF, deep flooding; SF-CK, first half a year SF followed by half a year CK; DF-CK, first half a year DF followed by half a year CK.

**TABLE 3** | Changes in decomposition rate ( $k'$ ,  $\text{g}\cdot\text{g}^{-1}\cdot\text{day}^{-1}$ ) of leaves of *Taxodium distichum* (A), *Salix matsudana* (B), and their mixtures (C) under different experimental treatments.

Foliage type	Experimental treatment	First (0–180 days)		Second (180–360 days)	
		$k'$ ( $\text{g}\cdot\text{g}^{-1}\cdot\text{day}^{-1}$ )	$R^2$	$k'$ ( $\text{g}\cdot\text{g}^{-1}\cdot\text{day}^{-1}$ )	$R^2$
A	CK	1.95	0.73	2.15	0.80
	SF	4.97	0.68	3.00	0.48
	DF	4.99	0.70	2.30	0.51
	SF-CK			1.63	0.47
	DF-CK			1.28	0.37
B	CK	3.18	0.84	2.65	0.84
	SF	6.60	0.64	4.54	0.70
	DF	5.02	0.56	1.91	0.60
	SF-CK			0.76	0.11
	DF-CK			1.38	0.35
C	CK	3.48	0.91	1.48	0.90
	SF	7.49	0.71	4.04	0.69
	DF	6.04	0.61	2.52	0.32
	SF-CK			1.96	0.33
	DF-CK			1.38	0.29

First: the first half of the year (0–180 days); second: the second half of the year (180–360 days);  $k'$ ,  $k \times 10^3$ . CK, unflooded; SF, shallow flooding; DF, deep flooding; SF-CK, first half a year SF followed by half a year CK; DF-CK, first half a year DF followed by half a year CK.

**TABLE 4** |  $F$ -value and determination coefficient ( $R^2$ , in parenthesis) for the regression analyses with foliage mass remaining rate (percent initial mass/month) as response variables and soil or water physiochemistry as predictor variables for the different experimental treatments over the 1-year experiment.

Foliage types	Experimental treatment	First (0–180 days)			
		T ( $^{\circ}\text{C}$ )	WC ( $\mu\text{S}\cdot\text{m}^{-1}$ )	pH	DO ( $\text{mg}\cdot\text{L}^{-1}$ )
A	CK	+18.81***0.461	0.26(0.012)	+5.02*(0.186)	
	SF	+19.05***0.464	−38.5***0.636	−15.97**0.421	−29.07***0.569
	DF	+18.15***0.452	−44.07***0.667	−66.12***0.750	−22.83***0.509
B	CK	+12.91**0.370	0.96(0.042)	3.83(0.148)	
	SF	+18.55***0.457	−32.1***0.593	−14.13**0.391	−23.95***0.521
	DF	+12.38**0.360	−39.2***0.641	−42.16***0.657	−14.92**0.404
C	CK	+11.98**0.352	1.63(0.069)	3.37(0.133)	
	SF	+19.21***0.466	−35.99***0.621	−15.08**0.407	−27.3***0.554
	DF	+10.85**0.330	−36.44***0.624	−38.53***0.637	−15.09**0.407

Foliage types	Experimental treatment	Second (180–360 days)			
		T ( $^{\circ}\text{C}$ )	WC ( $\mu\text{S}\cdot\text{m}^{-1}$ )	pH	DO ( $\text{mg}\cdot\text{L}^{-1}$ )
A	CK	2.92(0.117)	0.03(0.001)	0.30(0.013)	
	SF	0.33(0.015)	+12.12**0.355	+4.56*(0.172)	+12.44**0.361
	DF	3.25(0.129)	+14.13**0.391	+18.87***0.462	+10.82**0.330
	SF-CK	0.06(0.003)	0.37(0.016)	0.05(0.002)	
	DF-CK	0.15(0.007)	0.1(0.005)	0.21(0.01)	
B	CK	2.02(0.084)	0.17(0.008)	<0.001	
	SF	0.36(0.016)	+17.09***0.437	0.108(0.005)	+13.89**0.387
	DF	−6.16*(0.219)	+26.13***0.543	+12.53**0.358	+22.7***0.508
	SF-CK	1.33(0.057)	0.03(0.001)	1.85(0.078)	0.13(0.006)
	DF-CK	0.04(0.002)	<0.01	0.55(0.024)	3.12(0.124)
C	CK	2.42(0.099)	<0.001	0.05(0.002)	
	SF	0.03(0.001)	+9.48**0.301	0.05(0.002)	+7.64*(0.258)
	DF	1.36(0.058)	+7.65*(0.258)	+9.14**0.293	+6.23*(0.221)
	SF-CK	<0.001	0.169(0.007)	0.9(0.039)	
	DF-CK	0.03(0.001)	0.44(0.019)	0.19(0.008)	

Significantly positive and negative relationships are indicated by (+) and (−), respectively. A: *Taxodium distichum*; B: *Salix matsudana*; C: Mixtures. First: the first half of the year (0–180 days); Second: the second half of the year (180–360 days); T, temperature; WC, water conductivity; DO, dissolved oxygen. \* $P < 0.05$ , \*\* $P < 0.01$ , \*\*\* $P < 0.001$ .

(180–360 days), the TOC ( $k'$ ,  $\text{g}\cdot\text{g}^{-1}\cdot\text{day}^{-1}$ ) release rates of the CK and SF-CK environments of *T. distichum* and the SF environment of *S. matsudana* were the highest. The TOC release rates of

mixed species in the other DF and DF-CK environments were the highest, reaching 2.85 and 4.83. The TN ( $k'$ ,  $\text{g}\cdot\text{g}^{-1}\cdot\text{day}^{-1}$ ) release rates of the CK environment of *T. distichum* and the

**TABLE 5** | Changes in C, N, and P release rates ( $k'$ ,  $\text{g}\cdot\text{g}^{-1}\cdot\text{day}^{-1}$ ) of leaves of *Taxodium distichum* (A), *Salix matsudana* (B), and their mixtures (C) under different experimental treatments.

Foliage type	Experimental treatment	TOC		TN		TP	
		First (0–180 days)					
		$k'$	$R^2$	$k'$	$R^2$	$k'$	$R^2$
A	CK	1.84	0.65	0.72	0.24	4.04	0.63
	SF	4.67	0.72	4.11	0.76	7.19	0.62
	DF	7.15	0.76	6.64	0.83	8.62	0.71
B	CK	2.79	0.71	1.11	0.43	2.10	0.50
	SF	6.53	0.73	5.28	0.76	8.39	0.42
	DF	6.19	0.61	5.32	0.68	7.82	0.44
C	CK	3.24	0.81	1.22	0.44	2.73	0.40
	SF	7.34	0.78	5.75	0.77	9.21	0.59
	DF	6.85	0.69	5.66	0.67	7.94	0.52

Foliage type	Experimental treatment	TOC		TN		TP	
		Second (180–360 days)					
		$k'$	$R^2$	$k'$	$R^2$	$k'$	$R^2$
A	CK	4.84	0.87	3.71	0.77	7.05	0.86
	SF	4.51	0.54	2.45	0.29	4.01	0.64
	DF	2.52	0.47	2.06	0.42	4.93	0.78
	SF-CK	4.91	0.66	2.86	0.52	3.09	0.46
	DF-CK	4.23	0.42	2.48	0.25	3.54	0.42
B	CK	3.59	0.62	3.20	0.77	6.06	0.89
	SF	6.77	0.72	6.49	0.74	2.73	0.51
	DF	1.71	0.35	1.84	0.21	4.61	0.84
	SF-CK	2.53	0.35	0.51	0.02	3.60	0.64
	DF-CK	3.35	0.32	2.25	0.16	3.85	0.61
C	CK	1.55	0.39	3.38	0.68	3.42	0.44
	SF	4.76	0.74	4.97	0.81	6.66	0.73
	DF	2.85	0.37	4.25	0.46	5.83	0.71
	SF-CK	4.76	0.71	3.09	0.46	4.51	0.49
	DF-CK	4.83	0.57	3.54	0.42	4.65	0.70

First: the first half of the year (0–180 days); second: the second half of the year (180–360 days);  $k'$ :  $k \times 10^3$ ; CK, unflooded; SF, shallow flooding; DF, deep flooding; SF-CK, first half a year SF followed by half a year CK; DF-CK, first half a year DF followed by half a year CK.

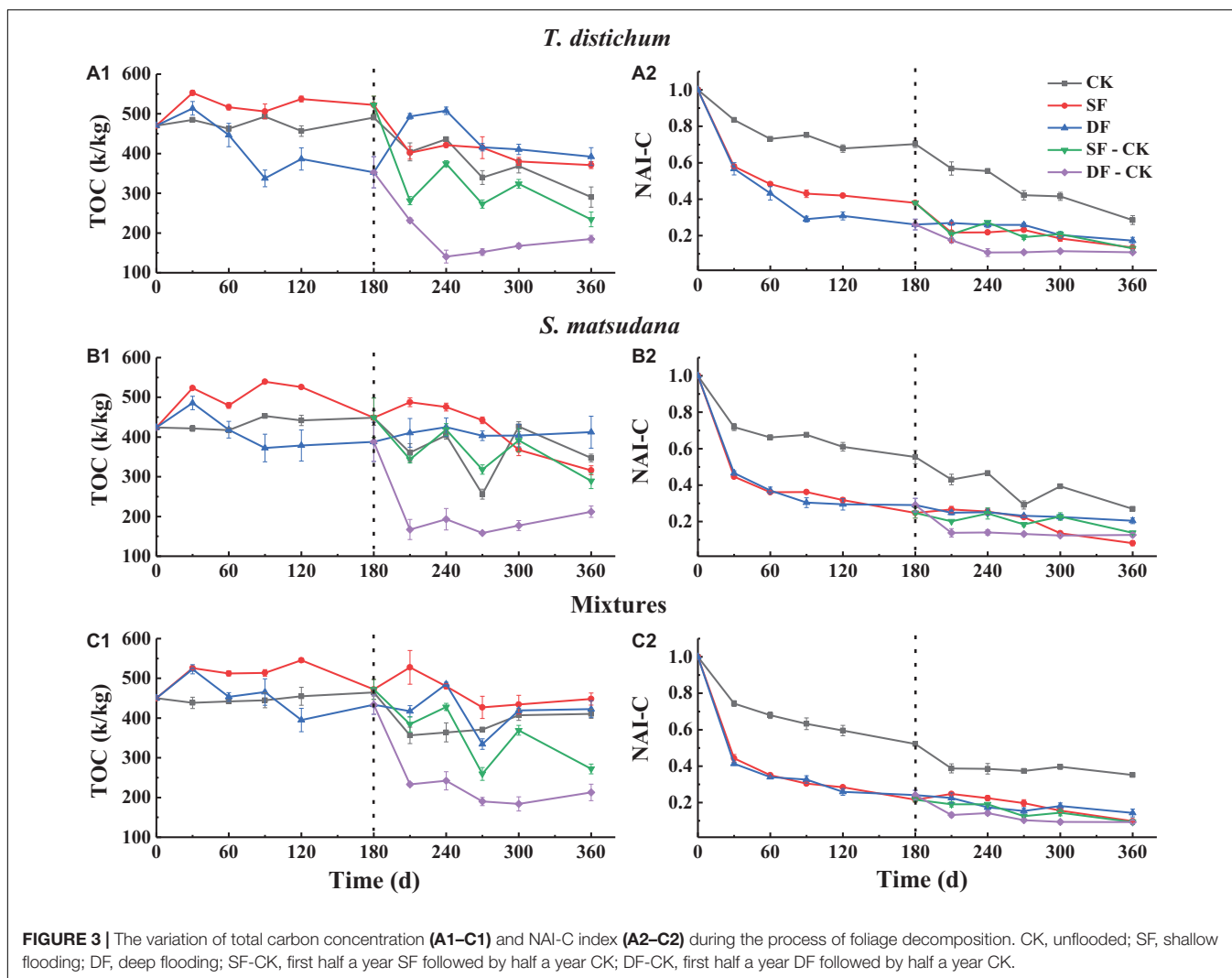
SF environment of *S. matsudana* were the highest, and the TN release rates of mixed species in the other DF, SF-CK, and DF-CK environments were the highest, reaching 4.25, 3.09, and 3.54. The TP ( $k'$ ,  $\text{g}\cdot\text{g}^{-1}\cdot\text{day}^{-1}$ ) release rate of the CK environment of *T. distichum* was the highest, and the TP release rates of mixed species in the other SF, DF, SF-CK, and DF-CK environments were the highest, reaching 6.66, 5.83, 4.51, and 4.65 (Table 5).

## Nutrient Accumulation Index During Foliage Decomposition

The change in the content of the leaf nutrients can only explain the proportion of a certain element in the mass remaining during its process of decomposition; it cannot directly reflect the loss of nutrients during the process of decomposition. Therefore, we expressed the degree of nutrient loss as the percentage of the net nutrient content to the initial amount at each stage of decomposition, which is characterized by the

accumulation index NAI. An  $\text{NAI} < 1$  or  $> 1$  means that the nutrients have been released or accumulated during the process of foliage decomposition, respectively. Nutrient dynamics and NAI varied among different species and water treatments (Figures 3–5).

During the entire process of decomposition, the TOC of each sample exhibited an overall decreasing trend (Figures 3A1–C1), the NAI-C of each foliage type under all experimental treatments declined continuously (Figures 3A2–C2), and the NAI-C was always less than 1. The NAI-C of each foliage type was the largest when decomposed in the CK environment (Figures 3A2–C2). When decomposed in the SF environment, the NAI-C of *S. matsudana* was the lowest (8.13%), and in the DF environment, the NAI-C of the mixtures was the lowest (14.31%) at the end of decomposition ( $p < 0.05$ ). When decomposed in the SF-CK and DF-CK environments, the NAI-C of the mixtures was consistent with the flooding environment of the DF, which



**FIGURE 3 |** The variation of total carbon concentration (A1–C1) and NAI-C index (A2–C2) during the process of foliage decomposition. CK, unflooded; SF, shallow flooding; DF, deep flooding; SF-CK, first half a year SF followed by half a year CK; DF-CK, first half a year DF followed by half a year CK.

was the lowest, at the end of decomposition (9.32 and 9.29%,  $p < 0.05$ ).

The dynamics of N and NAI-N dynamics during the decomposition of all foliage types are shown in Figure 4. Throughout the decomposition process, the N changed dynamically with the decomposition period (Figures 4A1–C1), while the NAI-N gradually decreased (Figure 4A2–C2); the rate of decrease in all foliage types was significantly faster than in the CK environment, and the NAI-N was less than 1 (except for the 30 and 90 days of *T. distichum* in CK, the 30 days of *S. matsudana* in the CK, the NAI-N was greater than 1). When decomposed in the CK environment, the NAI-N of all foliage types was significantly higher than that in the continuous flooding or flooded-to-unflooded hydrological process (Figures 4A2–C2). When decomposed in the SF environment, the NAI-N of *S. matsudana* (12.02%) was the lowest, while in the DF, SF-CK, and DF-CK treatments, the mixtures (16.01, 18.38, and 16.27%, respectively,  $p < 0.05$ ) of the NAI-N were the lowest.

The P and NAI-P dynamics during the process of decomposition of all foliage types are shown in Figure 5.

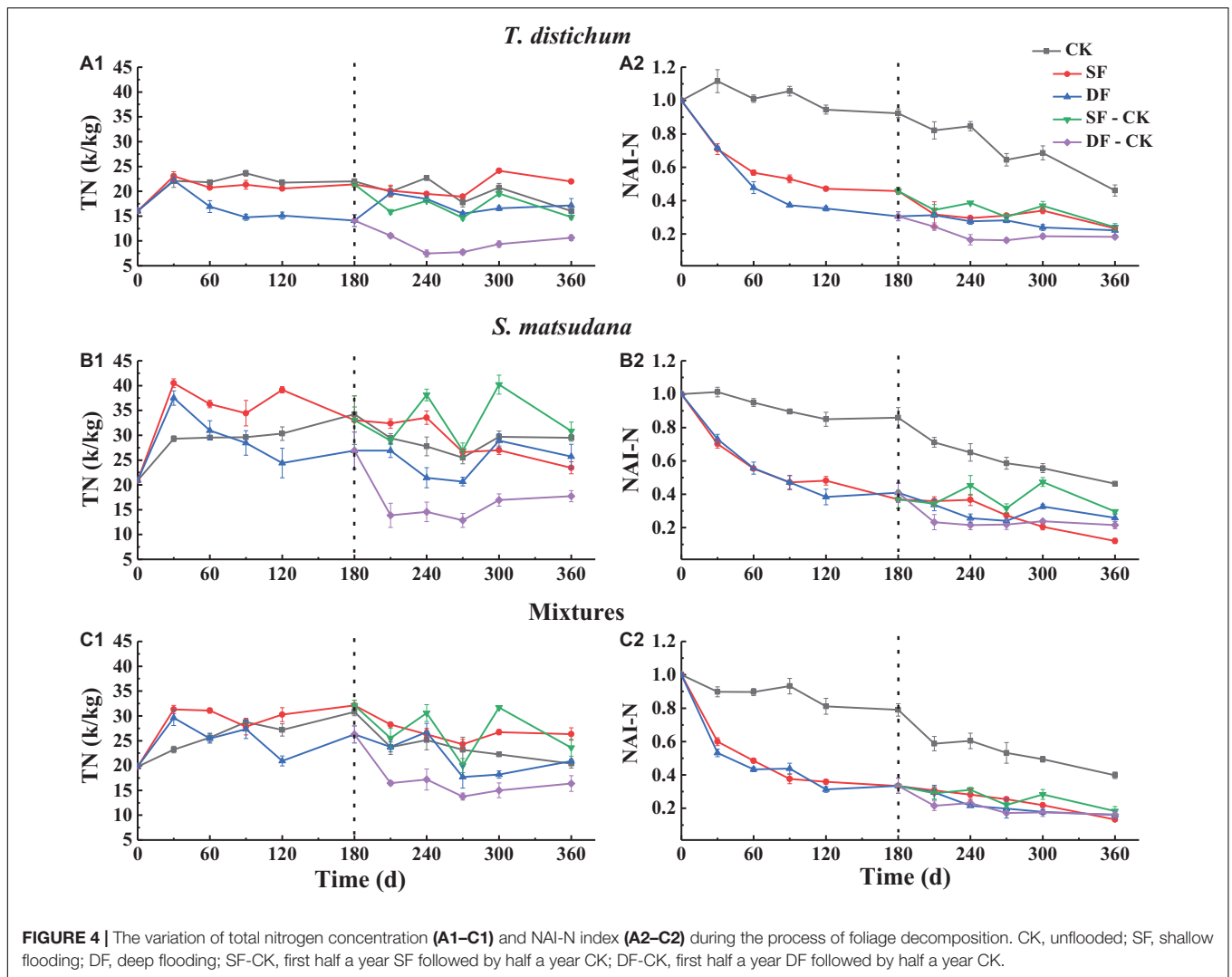
Except for the CK, the P decreased rapidly at the beginning of decomposition (Figures 5A1–C1). Similarly, NAI-P also declined the fastest in the first 30 days (Figures 5A2–C2); during the decomposition process, no matter what type of foliage, the NAI-P of each treatment was less than 1. The NAI-P of each foliage type under the CK environment was significantly higher than those of other environments ( $p < 0.05$ ); the NAI-P of each foliage type was very closed (Figures 5A2–C2). Except for CK, the NAI-P of the mixed species was the lowest in SF, DF, SF-CK, and DF-CK water treatments, which was 3.78, 5.38, 5.69, and 6.23%, respectively ( $p < 0.05$ ).

## DISCUSSION

### Influence of Hydrological Regime on Foliage Decomposition

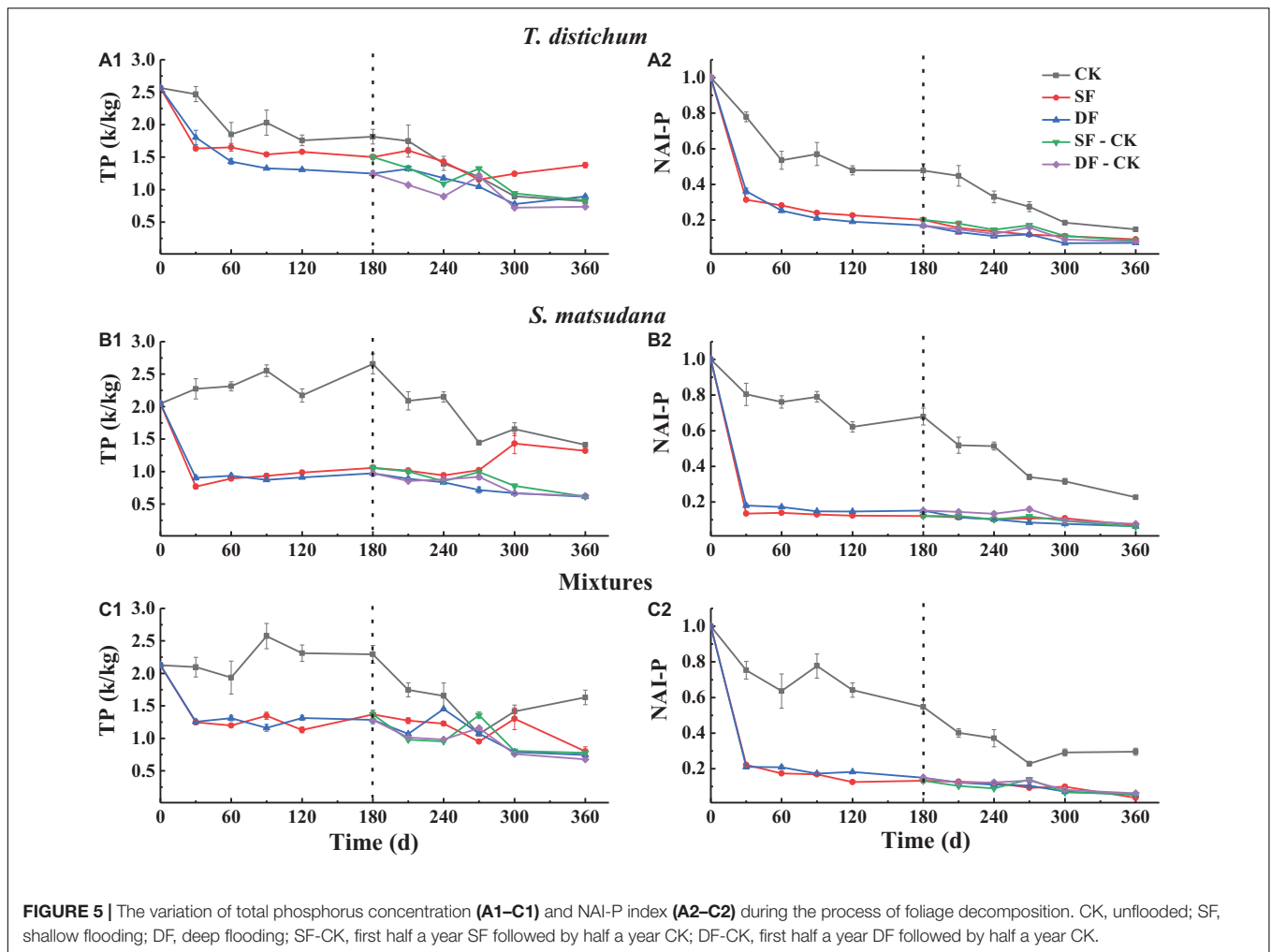
Traditionally, foliage decomposition has been roughly divided into three distinct processes: leaching, microbial action, and invertebrate feeding (Berg and McLaugherty, 2003;





Hättenschwiler, 2005). Leaching mainly occurs in the early stage of decomposition. In aquatic ecosystems, leaching is more prominent because water is the main factor limiting the decomposition of land (Swarnalatha and Reddy, 2011; Wallis and Raulings, 2011; Sun et al., 2012). Flooding can accelerate early leaching and physical fragmentation during foliage decomposition (Wright et al., 2013; Whitworth et al., 2014; Chen et al., 2020b), which affects the ability of microorganisms to participate in decomposition and affects the foliage utilization rate by decomposers (Beth et al., 2012; Xie et al., 2016; Xiao et al., 2019). Litter can lose as much as 30% of its original mass during the initial leaching process, but there are obvious differences between species (Graça et al., 2005). In our study, at the beginning of decomposition (30 days), all foliage types lost as much as over 40% of their mass (Figure 2). Xiao et al. (2017) also found that in a soaking environment of the TGR, the mass loss peaked during the first month of decomposition. This may have been due to the rapid leaching of soluble components, leading to decreased leaf quality in the early stages of decomposition. As the decomposition duration increased, the nutrients that were

easily lost were gradually decomposed. Simultaneously, the hard-to-decompose substances (such as cellulose and lignin) would be left, the proportion gradually increased, and the decomposition rate gradually slowed (Figure 2). However, in the second half of the decomposition period (180–360 days), even after being decomposed in the water for half a year, the soluble components had already been basically washed out, and the decomposition rate of each foliage type decomposed in dry conditions was still significantly lower than that in a continuously flooded environment (Table 3). This also confirmed that moisture is an important cause of foliage decomposition, whether it is applied at the beginning of decomposition or after a period of time. Similar to the findings of previous research on the acceleration of litter decomposition by flooding (Lecerf et al., 2007; Wallis and Raulings, 2011; Yue et al., 2016; Xiao et al., 2017; Yu et al., 2020), after the long-term immersion of litter in the water, not only during the early stage of decomposition, the strong leaching effect accelerated the rapid decomposition of soluble substances, but the strong mechanical breaking effect generated by the movement of water and debris would further affect the



entire decomposition process (Lecerf et al., 2007; Zhang et al., 2015; Yue et al., 2016). In addition, aquatic microorganisms and invertebrates also play an important role in the process of foliage decomposition (Leroy and Marks, 2006; Tiegts et al., 2013). Fungi are the main decomposers in a flooded environment (Fonseca et al., 2013), and fungal biomass will increase significantly under flooding (Wright et al., 2013), which may also be the reason for the accelerated decomposition of leaves under flooding (Xie et al., 2016). Furthermore, relatively stable water temperatures also provide a favorable environment for biological activities to contribute to foliage decomposition (Table 1).

**TABLE 6 |** Initial foliar chemical characteristics of *Taxodium distichum* (A), *Salix matsudana* (B), and their mixtures (C).

Foliage type	C (g·kg <sup>-1</sup> )	N (g·kg <sup>-1</sup> )	P (g·kg <sup>-1</sup> )
A	470.38 ± 2.82a	16.05 ± 0.13c	2.56 ± 0.03a
B	423.85 ± 0.34c	20.90 ± 0.20a	2.05 ± 0.03b
C	450.05 ± 0.84b	19.78 ± 0.36b	2.13 ± 0.03b

Different lowercase letters indicate a significant difference between species for the same variable at  $P < 0.05$ .

In our study, the effects of experimental treatment and decomposition time were also significant on the foliage remaining ( $p < 0.001$ ; Table 2). Some studies have shown that foliage decomposition was closely related to the decomposed microenvironment, such as hydrological regime, the depth of flooding, and other abiotic factors, which can directly or indirectly affect the decomposition and nutrient release (Sun et al., 2012; Vivian et al., 2014; Casco et al., 2016; Xie et al., 2016; Yu et al., 2020). The decomposition rate of each foliage type in the SF environment during the first half of the year and the second half of the year was higher than that in the DF environment (except for the SF of *T. distichum* in the first half of the year) (Table 3). One of the reasons may be that the soluble organic matter in the SF had a higher leaching rate and attracted stronger microbial activity; under flooding environment, fungi can change the composition of their functional groups from terrestrial fungi to aquatic filamentous fungi in an area adapted to an anoxic environment, resulting in higher decomposition rates (Wallis and Raulings, 2011; Peltoniemi et al., 2012). Some previous studies have reached similar conclusions. Sun et al. (2012), studied *Calamagrostis angustifolia* litter decomposition in perennial flooding with different water depths and seasonal

flooding; the results showed that the decomposition rates of a perennial flooding regime were much higher, and the shallowest perennial flooding had the fastest decomposition. Xie et al. (2016) also found that after 210 days of incubation, the decomposition rate of shallow flooding (5 cm) was greater than that of deep flooding (80 cm) because shallow submergence could stimulate the degradation of labile leaf litter.

In addition, the decomposition of foliage was also regulated by environmental factors (Table 4). In the first half of the decomposition period, regardless of the experimental treatment (CK, SF, and DF), the temperature and the mass remaining of each foliage type was significantly positively correlated; the electrical conductivity, pH, and dissolved oxygen were significantly negative with the mass remaining of the leaves in the SF and DF environment. The temperature of the SF environment was higher than that of the DF environment (Table 1). A higher temperature can increase the vitality of the fungus associated with decomposition (Fernandes et al., 2014; Martínez et al., 2014; Duarte et al., 2016). This promotion effect could occur in both high and low nutrient water bodies (Ferreira and Chauvet, 2011). It may be another important factor that affects the faster decomposition under the SF environment. Additionally, the level of dissolved oxygen was also higher in SF than that in DF, and the conductivity was low (Table 1). These environmental changes were also conducive to the growth and reproduction of microbial decomposers (Fernandes et al., 2014; Duarte et al., 2016). As the water depth changes, the redox conditions and light intensity will change, which may further influence the activity of decomposing microorganisms and, thus, the foliage decomposition (Wallis and Raulings, 2011; Xie et al., 2016). Therefore, a change in the depth of flooding, hydrological regime, temperature, dissolved oxygen, and other environmental factors can change the microenvironment and vary the rate of decomposition. In addition, the rate of decomposition may also be related to the difference in foliage quality between different foliage types (Table 6). All of these factors clearly showed that the foliage decomposition under the special hydrological dynamics in the reservoir area was conducive to material cycling in the reservoir area and played an important role in the material energy cycle of the entire riparian ecosystem.

In addition, we found that in the first half of the decomposition period, the decomposition rate of the mixed species in the three decomposition environments of CK, SF, and DF was the fastest. In the second half of the decomposition period, except the CK and SF environments, the decomposition rate of the mixed species in the DF, SF-CK, and DF-CK environments were also the fastest (Table 3). This means that during the decomposition process of continuous flooding in the first half of the year and the dry conditions in the second half of the year, the leaves of mixtures of *T. distichum* and *S. matsudana* accelerated the decomposition process (Figure 2). It was generally believed that the mixing of coniferous and broad-leaved species would accelerate decomposition in the terrestrial environment (Gessner et al., 2010; Zeng et al., 2018). In our study, the mixed-species decomposition in the flooded environment was similar to that of the terrestrial environment, but it happened earlier and was more intense; it accelerated the decomposition in

both continuous flooding and flooded-to-unflooded hydrological process (Figure 2 and Table 3). This might be because the high nutrient content of *S. matsudana* promotes nutrient availability for *T. distichum*, which has relatively low nutrient content initially and causes the decomposition of *T. distichum* to accelerate during the process of decomposition (Table 6). After *S. matsudana*, which had a high N concentration, was mixed with the low initial N of *T. distichum*, different concentrations of N could be transported between the mixed leaf litter through fungal hyphae or leaching (Schimel and Hättenschwiler, 2007). The high N concentration will transfer N into foliage types with low substrate mass, resulting in an increased decomposition rate. In addition, the mixtures may promote the rapid colonization of decomposer communities, thereby accelerating the mass loss of slowly processed recalcitrant leaves (Ostrofsky, 2007). Our research found that the decomposition of the mixtures in some experimental treatments accelerated the decomposition rate, which may be caused by the above-combined effects.

## Influence of Hydrological Regime on Foliage Nutrient Release

In our study, decomposition time, experimental treatment, and their interactions had significant effects on nutrient remaining from each foliage type ( $p < 0.001$ ; Table 2). In a flooded environment decomposition process, the concentrations of nutrients and the microbial biomass of foliage were lower when compared with the unflooded environment, indicating that the transportation and circulation of water flow may cause a rapid decrease in nutrient concentrations in a flooded environment (Kominoski et al., 2007; Lecerf et al., 2007). In the first half of the flooded decomposition period, the release rates of TOC, TN, and TP in the SF and DF environments were also significantly greater than that in CK (Table 5). Thus, the nutrients in each foliage type have been found to be more stable in unflooded environments than in flooded environments. This was similar to the study of Shieh et al. (2008), who found that the litter of *Machilus thunbergii*, *Schefflera octophylla*, and *Ficus erecta* released nutrients more rapidly when submerged in the subtropical rivers in northern Taiwan, which was related to their initial nutrient concentration. In addition, the NAI-C, NAI-N, and NAI-P in each foliage type were less than one at the end of decomposition, and much less than CK; the nutrients of the three foliage types were in a net release state (Figures 3–5). This further showed that the long-term flooding in the riparian zone of the TGR area could promote the release of nutrients from leaves of reforestation tree species to a certain extent.

The effects of the flooded environment on the nutrients remaining may be related to the characteristics of the leaves, microenvironmental conditions of decomposition, and the selective feeding of aquatic decomposers among different species (Xie et al., 2016; Xiao et al., 2019). Among them, the concentrations of TN and TP in the leaves were important factors that affect decomposition; changes in their concentrations will alter the release of nutrients (Ball et al., 2009; Berglund et al., 2013; Xiao et al., 2017). The present study found that, in the first half of the decomposition period, the release rates of TOC and TN

of the mixtures were the fastest in the CK and SF environments (Table 5). In addition, the mixtures had the lowest of NAI-N (Figure 4), which showed that the C and N cycles as well as the nutrient transfer in the mixtures were very dynamic and could promote the decomposition and energy flow of matter. Besides, previous soaking experiments have shown that the decay and decomposition of plants in the TGR cannot only release large amounts of TN but also release large amounts of TP (Xiao et al., 2017). The form of P in leaves exists as a biologically active element, making it easier to be released (Schindler and Gessner, 2009; Jacobson et al., 2011). During the decomposition process, it can be released abruptly into the water (Sommaruga et al., 1993). Fraser et al. (2004) reported that P could be released through plant migration and leaching because it exists in the form of phosphate anions or compounds. Our study supported this finding; the release of TP was much faster than that of TOC and TN in all foliage types (Table 5). For the TP release rate of the SF environment in the first half of the year, as well as the SF, DF, SF-CK, and DF-CK environments in the second half of the year, the mixed species were all the highest. These showed that the release of nutrients from the reforestation tree species, especially the mixed-species samples, may have accelerated the nutrient cycle and energy flow in the riparian zone of the TGR.

In addition to leaf characteristics, other environmental factors and microbial action that affect the decomposition may also indirectly influence the release of nutrients (Gessner et al., 2010; Zanne et al., 2015; Bradford et al., 2016). For example, oxygen levels differed between aquatic and terrestrial systems, and the dissolved oxygen level also varied with different water depths (Table 1), which would lead to different levels of decomposer activity in these two systems. Besides, although terrestrial litter generally has higher microbial biomass, stream fungi were more efficient at decomposing leaves than terrestrial fungi (Gessner and Chauvet, 1994; Hieber and Gessner, 2002). However, terrestrial microorganisms are more capable of immobilizing and retaining the nutrients of litter in leaves because they are less likely to be restricted by the hydrological flow. Our research also confirmed this; the amount of nutrients remaining of the samples decomposed in CK environment was significantly greater than that in continuous flooding and flooded-to-unflooded hydrological processes (Table 5). In short, the differences in the nutrient release under different hydrological regimes are mainly caused by the specific foliage traits, environmental conditions, and selective aquatic decomposition of different species (Gessner et al., 2010; Jabiol and Chauvet, 2012; Fernandes et al., 2014).

## REFERENCES

- Alvim, E. A. C. C., de Oliveira Medeiros, A., Rezende, R. S., and Gonçalves, J. F. (2015). Small leaf breakdown in a Savannah headwater stream. *Limnologia* 51, 131–138. doi: 10.1016/j.limno.2014.10.005
- Anderson, J. T., and Smith, L. M. (2002). The effect of flooding regimes on decomposition of *Polygonum pensylvanicum* in playa wetlands (Southern Great Plains, USA). *Aquatic Botany* 74, 97–108. doi: 10.1016/S0304-3770(02)0049-9

## CONCLUSION

In summary, different hydrological regimes could promote the mass loss and nutrient release of the leaves of the dominant afforestation tree species in the riparian zone of the TGR area. The hydrological regime, decomposition time, foliage types, and their interactions had a very significant effect on foliage decomposition and nutrient release. Especially for the mixed species, the decomposition rate of all experimental treatments (CK, SF, and DF) in the first half of the year was faster than that of a single species, and the decomposition rate of DF, SF-CK, and DF-CK environments in the second half of the year was also faster than that of a single species. Both hydrological processes and different depths of flooding accelerate the material circulation and energy flow in the reservoir area. In addition, the experiment did not test the factors influencing microorganisms and only made speculations using relevant research. It should be followed up in future experimental studies.

## DATA AVAILABILITY STATEMENT

The raw data supporting the conclusions of this article will be made available by the authors, without undue reservation.

## AUTHOR CONTRIBUTIONS

CL, ZC, and MA conceived the study, designed the experiments, and supervised the entire study. ZC, CW, and XC performed the experiments. CL and ZC wrote the manuscript. All authors contributed to the article and approved the submitted version.

## FUNDING

This research has been supported by the Chongqing Municipality Key Forestry Research Project (No. TD2020-2), Chongqing Municipality Housing and Urban Construction Committee (No. Chengkezi 2019-1-4-2), State Cultivation Base of Eco-Agriculture for Southwest Mountainous Land (No. 5330200076), Forestry Extension Project of China Central Finance (No. Yulinketui 2020-2), International Sci-Tech Cooperation Project of Ministry of Science and Technology (No. 2015DFA90900), Ningxia Key Research and Development Projects (No. 2020BFG03006), and Ningxia Natural Science Foundation Project (No. 2020AAC03107).

- Arif, M., Jie, Z., Wokadala, C., Songlin, Z., Zhongxun, Y., Zhangting, C., et al. (2021). Assessing riparian zone changes under the influence of stress factors in higher-order streams and tributaries: implications for the management of massive dams and reservoirs. *Sci. Total Environ.* 776:146011. doi: 10.1016/j.scitotenv.2021.146011
- Arif, M., Zhang, S., Jie, Z., Charles, W., Sanelisiwe, M. P., Changxiao, L., et al. (2020). Evaluating the effects of pressure indicators on riparian zone health conditions in the Three Gorges Dam Reservoir. *China. Forests* 11:214. doi: 10.3390/f11020214



- Arroita, M., Aristi, I., Diez, J., Martinez, M., Oyarzun, G., Elozegi, A., et al. (2015). Impact of water abstraction on storage and breakdown of coarse organic matter in mountain streams. *Sci. Total Environ.* 503–504, 233–240. doi: 10.1016/j.scitotenv.2014.06.124
- Ball, B. A., Bradford, M. A., and Hunter, M. D. (2009). Nitrogen and phosphorus release from mixed litter layers is lower than predicted from single species decay. *Ecosystems* 12, 87–100. doi: 10.1007/s10021-008-9208-2
- Berg, B., and McClaugherty, C. (2003). *Plant Litter*. Berlin: Springer.
- Berglund, S. L., Ågren, G. I., and Ekblad, A. (2013). Carbon and nitrogen transfer in leaf litter mixtures. *Soil Biol. Biochem.* 57, 341–348. doi: 10.1016/j.soilbio.2012.09.015
- Beth, C. M., Kratzer, E. B., and Webster, J. R. (2012). Immobilization and mineralization of N and P by heterotrophic microbes during leaf decomposition. *Freshwater Sci.* 31, 133–147. doi: 10.1899/11-060.1
- Bradford, M. A., Berg, B., Maynard, D. S., Wieder, W. R., and Wood, S. A. (2016). Understanding the dominant controls on litter decomposition. *J. Ecol.* 104, 229–238. doi: 10.1111/1365-2745.12507
- Capps, K. A., Graça, M. A. S., Encalada, A. C., and Flecker, A. S. (2011). Leaf-litter decomposition across three flooding regimes in a seasonally flooded Amazonian watershed. *J. Trop. Ecol.* 27, 205–210. doi: 10.1017/S0266467410000635
- Casco, S. L., Galassi, M. E., Mari, E. K. A., Poi, A. S. G., and Neiff, J. J. (2016). Linking hydrologic regime, rainfall and leaf litter fall in a riverine forest within the Ramsar Site Humedales Chaco (Argentina). *Ecohydrology* 9, 773–781. doi: 10.1002/eco.1673
- Chen, Z., Chen, X., Wang, C., and Li, C. (2020a). Foliar cellulose and lignin degradation of two dominant tree species in a riparian zone of the Three Gorges Dam Reservoir. *China. Front. Plant Sci.* 11:569871. doi: 10.3389/fpls.2020.569871
- Chen, Z., Wang, C., Chen, X., Yuan, Z., Song, H., Li, C., et al. (2020b). Heterogeneous leaves of predominant trees species enhance decomposition and nutrient release in the riparian zone of the Three Gorges Reservoir. *Sci. Rep.* 10:17382. doi: 10.1038/s41598-020-74062-4
- Chen, Z., Zhijun, L., Xiaohong, Z., Mingyuan, W., Deyou, F., Xu, H., et al. (2017). Pollutants dynamic release of *Potamogeton crispus* during decomposition process. *J. Arid Land Resources Environ.* 31, 153–159. doi: 10.13448/j.cnki.jalre.2017.262
- Das, M., Royer, T. V., and Leff, L. G. (2008). Fungal communities on decaying leaves in streams: a comparison of two leaf species. *Mycol. Prog.* 7, 267–275. doi: 10.1007/s11557-008-0569-x
- Duarte, S., Cássio, F., Ferreira, V., Canhoto, C., and Pascoal, C. (2016). Seasonal variability may affect microbial decomposers and leaf decomposition more than warming in streams. *Microbial Ecol.* 72, 263–276. doi: 10.1007/s00248-016-0780-2
- Fernandes, L., Seena, S., Pascoal, C., and Cássio, F. (2014). Elevated temperature may intensify the positive effects of nutrients on microbial decomposition in streams. *Freshwater Biol.* 59, 2390–2399. doi: 10.1111/fwb.12445
- Ferreira, V., and Chauvet, E. (2011). Synergistic effects of water temperature and dissolved nutrients on litter decomposition and associated fungi. *Global Change Biol.* 17, 551–564. doi: 10.1111/j.1365-2486.2010.02185.x
- Fonseca, D. S. A. L., Bianchini, I., Pimenta, C. M. M., Soares, C. B. P., and Mangiavacchi, N. (2013). The flow velocity as driving force for decomposition of leaves and twigs. *Hydrobiologia* 703, 59–67. doi: 10.1007/s10750-012-1342-3
- Fonte, S. J., and Schowalter, T. D. (2004). Decomposition of greenfall vs. Senescent foliage in a tropical forest ecosystem in puerto rico. *Biotropica* 36, 474–482. doi: 10.1646/1597
- Fraser, L. H., Carty, S. M., and Steer, D. (2004). A test of four plant species to reduce total nitrogen and total phosphorus from soil leachate in subsurface wetland microcosms. *Bioresource Technol.* 94, 185–192. doi: 10.1016/j.biortech.2003.11.023
- Gessner, M. O., and Chauvet, E. (1994). Importance of stream microfungi in controlling breakdown rates of leaf litter. *Ecology* 75, 1807–1817.
- Gessner, M. O., Swan, C. M., Dang, C. K., McKie, B. G., Bardgett, R. D., Wall, D. H., et al. (2010). Diversity meets decomposition. *Trends Ecol. Evol.* 25, 372–380. doi: 10.1016/j.tree.2010.01.010
- González, E., Felipe-Lucia, M. R., Bourgeois, B., Boz, B., Nilsson, C., Palmer, G., et al. (2017). Integrative conservation of riparian zones. *Biol. Conservation* 211, 20–29. doi: 10.1016/j.biocon.2016.10.035
- Graça, M. A. S., Bärlocher, F., and Gessner, M. O. (2005). *Methods to Study Litter Decomposition: A Practical Guide*. Berlin: Springer.
- Hättenschwiler, S. (2005). *Effects of Tree Species Diversity on Litter Quality and Decomposition. Forest Diversity and Function*. Berlin: Springer.
- He, X., Wang, T., Wu, K., Wang, P., Qi, Y., Arif, M., et al. (2021). Responses of swamp cypress (*Taxodium distichum*) and Chinese willow (*Salix matsudana*) roots to periodic submergence in mega-reservoir: changes in organic acid concentration. *Forests* 12:203. doi: 10.3390/f12020203
- Hieber, M., and Gessner, M. O. (2002). Contribution of stream detritivores, fungi, and bacteria to leaf breakdown based on biomass estimates. *Ecology* 83, 1026–1038.
- Hoerber, S., Fransson, P., Weih, M., and Manzoni, S. (2020). Leaf litter quality coupled to *Salix* variety drives litter decomposition more than stand diversity or climate. *Plant Soil* 453, 313–328. doi: 10.1007/s11104-020-04606-0
- Holbach, A., Norra, S., Wang, L., Yijun, Y., Hu, W., Zheng, B., et al. (2014). Three gorges reservoir: density pump amplification of pollutant transport into tributaries. *Environ. Sci. Technol.* 48, 7798–7806. doi: 10.1021/es501132k
- Jabiol, J., and Chauvet, E. (2012). Fungi are involved in the effects of litter mixtures on consumption by shredders. *Freshwater Biol.* 57, 1667–1677. doi: 10.1111/j.1365-2427.2012.02829.x
- Jacobson, T. K. B., Bustamante, M. M. D. C., and Kozovits, A. R. (2011). Diversity of shrub tree layer, leaf litter decomposition and N release in a Brazilian Cerrado under N, P and N plus P additions. *Environ. Pollut.* 159, 2236–2242. doi: 10.1016/j.envpol.2010.10.019
- Kalburjtji, K. L., Mosjidis, J. A., and Mamolos, A. P. (1999). Litter dynamics of low and high tannin sericea lespedeza plants under field conditions. *Plant Soil* 208, 271–281. doi: 10.1023/A:1004577624435
- Kominoski, J. S., Marczak, L. B., and Richardson, J. S. (2011). Riparian forest composition affects stream litter decomposition despite similar microbial and invertebrate communities. *Ecology (Durham)* 92, 151–159. doi: 10.1890/10-0028.1
- Kominoski, J. S., Pringle, C. M., Ball, B. A., Bradford, M. A., Coleman, D. C., et al. (2007). Nonadditive effects of leaf litter species diversity on breakdown dynamics in a Detritus-Based stream. *Ecology* 88, 1167–1176. doi: 10.1890/06-0674
- Lecerf, A., Marie, G., Kominoski, J. S., LeRoy, C. J., Bernadet, C., Swan, C. M., et al. (2011). Incubation time, functional litter diversity, and habitat characteristics predict litter-mixing effects on decomposition. *Ecology* 92, 160–169. doi: 10.2307/29779584
- Lecerf, A., Risnoveanu, G., Popescu, C., Gessner, M. O., and Chauvet, E. (2007). Decomposition of diverse litter mixtures in streams. *Ecology* 88, 219–227.
- Leroy, C. J., and Marks, J. C. (2006). Litter quality, stream characteristics and litter diversity influence decomposition rates and macroinvertebrates. *Freshwater Biol.* 51, 605–617. doi: 10.1111/j.1365-2427.2006.01512.x
- Li, A. O. Y., Ng, L. C. Y., and Dudgeon, D. (2009). Effects of leaf toughness and nitrogen content on litter breakdown and macroinvertebrates in a tropical stream. *Aquatic Sci.* 71, 80–93. doi: 10.1007/s00027-008-8117-y
- Li, K., Zhu, C., Wu, L., and Huang, L. (2013). Problems caused by the Three Gorges Dam construction in the Yangtze River basin: a review. *Environ. Rev.* 21, 127–135. doi: 10.1139/er-2012-0051
- Lidman, J., Jonsson, M., Burrows, R. M., Bundschuh, M., and Sponseller, R. A. (2017). Composition of riparian litter input regulates organic matter decomposition: implications for headwater stream functioning in a managed forest landscape. *Ecol. Evol.* 7, 1068–1077. doi: 10.1002/ece3.2726
- Makkonen, M., Berg, M. P., Handa, I. T., Hättenschwiler, S., van Ruijven, J., van Bodegom, P. M., et al. (2012). Highly consistent effects of plant litter identity and functional traits on decomposition across a latitudinal gradient. *Ecol. Lett.* 15, 1033–1041. doi: 10.1111/j.1461-0248.2012.01826.x
- Martínez, A., Larrañaga, A., Pérez, J., Descals, E., and Pozo, J. (2014). Temperature affects leaf litter decomposition in low-order forest streams: field and microcosm approaches. *FEMS Microbiol. Ecol.* 87, 257–267. doi: 10.1111/1574-6941.12221
- New, T., and Xie, Z. (2008). Impacts of large dams on riparian vegetation: applying global experience to the case of China's Three Gorges Dam. *Biodiversity Conservation* 17, 3149–3163. doi: 10.1007/s10531-008-9416-2
- Nilsson, C., and Svedmark, M. (2002). Basic principles and ecological consequences of changing water regimes: riparian plant communities. *Environ. Manag.* 30, 468–480. doi: 10.1007/s00267-002-2735-2



- Olson, J. S. (1963). Energy storage and the balance of producers and decomposers in ecological systems. *Ecology* 44, 322–331.
- Ostrofsky, M. L. (2007). A comment on the use of exponential decay models to test nonadditive processing hypotheses in multispecies mixtures of litter. *J. North Am. Benthol. Soc.* 26, 23–27.
- Peltoniemi, K., Straková, P., Fritze, H., Iráizoz, P. A., Pennanen, T., Laiho, R., et al. (2012). How water-level drawdown modifies litter-decomposing fungal and actinobacterial communities in boreal peatlands. *Soil Biol. Biochem.* 51, 20–34. doi: 10.1016/j.soilbio.2012.04.013
- Ren, C., Wang, L., Zheng, B., Qian, J., and Ton, H. (2016). Ten-year change of total phosphorous pollution in the Min River, an upstream tributary of the Three Gorges Reservoir. *Environ. Earth Sci.* 75:1015. doi: 10.1007/s12665-016-5789-9
- Schimmel, J. P., and Hättenschwiler, S. (2007). Nitrogen transfer between decomposing leaves of different N status. *Soil Biol. Biochem.* 39, 1428–1436. doi: 10.1016/j.soilbio.2006.12.037
- Schindler, M. H., and Gessner, M. O. (2009). Functional leaf traits and biodiversity effects on litter decomposition in a stream. *Ecology* 90, 1641–1649. doi: 10.1890/08-1597.1
- Shieh, S., Wang, C., Hsu, C., and Yang, P. (2008). Leaf breakdown in a subtropical stream: nutrient release patterns. *Fundamental Appl. Limnol. Arch. Für Hydrobiol.* 171, 273–284. doi: 10.1127/1863-9135/2008/0171-0273
- Sommaruga, R., Nestor, D., and Mazze, N. (1993). Study on the decomposition of pistiatriates (Araceae) in Cisne Reservoir, Uruguay. *Int. Rev. Gesamten Hydrobiol.* 78, 263–272.
- Sun, Z., Mou, X., and Liu, J. S. (2012). Effects of flooding regimes on the decomposition and nutrient dynamics of *Calamagrostis angustifolia* litter in the Sanjiang Plain of China. *Environ. Earth Sci.* 66, 2235–2246. doi: 10.1007/s12665-011-1444-7
- Swarnalatha, B., and Reddy, M. V. (2011). Leaf litter breakdown and nutrient release in three tree plantations compared with a natural degraded forest on the coromandel coast (Puducherry, India). *Ecotropica* 17, 39–51.
- Tiegs, S. D., Entekin, S. A., Reeves, G. H., Kuntzsch, D., and Merritt, R. W. (2013). Litter decomposition, and associated invertebrate communities, in wetland ponds of the copper river delta, Alaska (USA). *Wetlands* 33, 1151–1163. doi: 10.1007/s13157-013-0470-5
- Vivian, L. M., Godfree, R. C., Colloff, M. J., Mayence, C. E., and Marshall, D. J. (2014). Wetland plant growth under contrasting water regimes associated with river regulation and drought: implications for environmental water management. *Plant Ecol.* 215, 997–1011. doi: 10.1007/s11258-014-0357-4
- Wallis, E., and Raulings, E. (2011). Relationship between water regime and hummock-building by *Melaleuca ericifolia* and *Phragmites australis* in a brackish wetland. *Aquatic Botany* 95, 182–188. doi: 10.1016/j.aquabot.2011.05.006
- Wang, J., You, Y., Tang, Z., Sun, X., and Sun, O. J. (2016). A comparison of decomposition dynamics among green tree leaves, partially decomposed tree leaf litter and their mixture in a warm temperate forest ecosystem. *J. Forestry Res.* 27, 1037–1045. doi: 10.1007/s11676-016-0248-8
- Wang, S. (2003). Countermeasures for protection and sustainable utilization of wetland in three gorges reservoir area. *Chongqing Environ. Sci.* 25, 111–114.
- Whitworth, K. L., Baldwin, D. S., and Kerr, J. L. (2014). The effect of temperature on leaching and subsequent decomposition of dissolved carbon from inundated floodplain litter: implications for the generation of hypoxic blackwater in lowland floodplain rivers. *Chem. Ecol.* 30, 491–500. doi: 10.1080/02757540.2014.885019
- Wright, E. L., Black, C. R., Cheesman, A. W., Turner, B. L., and Sjögersten, S. (2013). Impact of simulated changes in water table depth on ex situ decomposition of leaf litter from a neotropical peatland. *Wetlands* 33, 217–226. doi: 10.1007/s13157-012-0369-6
- Xiao, L., Zhu, B., Nsenga Kumwimba, M., and Jiang, S. (2017). Plant soaking decomposition as well as nitrogen and phosphorous release in the water-level fluctuation zone of the Three Gorges Reservoir. *Sci. Total Environ.* 592, 527–534. doi: 10.1016/j.scitotenv.2017.03.104
- Xiao, W., Chen, H. Y. H., Kumar, P., Chen, C., and Guan, Q. (2019). Multiple interactions between tree composition and diversity and microbial diversity under litter decomposition. *Geoderma* 341, 161–171. doi: 10.1016/j.geoderma.2019.01.045
- Xie, Y., Xie, Y., Hu, C., Chen, X., and Li, F. (2016). Interaction between litter quality and simulated water depth on decomposition of two emergent macrophytes. *J. Limnol.* 75, 36–43. doi: 10.4081/jlimnol.2015.1119
- Xie, Y., Xie, Y., Xiao, H., Chen, X., and Li, F. (2017). Controls on litter decomposition of emergent macrophyte in dongting lake wetlands. *Ecosystems* 20, 1383–1389. doi: 10.1007/s10021-017-0119-y
- Xu, X., Tan, Y., and Yang, G. (2013). Environmental impact assessments of the Three Gorges Project in China: issues and interventions. *Earth-Science Rev.* 124, 115–125. doi: 10.1016/j.earscirev.2013.05.007
- Yang, F., Liu, W., Wang, J., Liao, L., and Wang, Y. (2012). Riparian vegetation's responses to the new hydrological regimes from the Three Gorges Project: clues to revegetation in reservoir water-level-fluctuation zone. *Acta Ecol. Sinica* 32, 89–98. doi: 10.1016/j.chnaes.2012.02.004
- Yangtze River Water Resources Commission (1999). *Research on the Impact of Three Gorges Ecological Environment*. WuHan: Hubei Science and Technology Press.
- Ye, C., Li, S., Zhang, Y., and Zhang, Q. (2011). Assessing soil heavy metal pollution in the water-level-fluctuation zone of the Three Gorges Reservoir. China. *J. Hazardous Mater.* 191, 366–372. doi: 10.1016/j.jhazmat.2011.04.090
- Yu, X., Ding, S., Lin, Q., Wang, G., Wang, C., Zheng, S., et al. (2020). Wetland plant litter decomposition occurring during the freeze season under disparate flooded conditions. *Sci. Total Environ.* 706:136091. doi: 10.1016/j.scitotenv.2019.136091
- Yuan, X., Zhang, Y., Liu, H., Xiong, S., Li, B., Deng, W., et al. (2013). The littoral zone in the Three Gorges Reservoir, China: challenges and opportunities. *Environ. Sci. Pollution Res.* 20, 7092–7102. doi: 10.1007/s11356-012-1404-0
- Yue, K., Yang, W., Peng, C., Peng, Y., Zhang, C., Huang, C., et al. (2016). Foliar litter decomposition in an alpine forest meta-ecosystem on the eastern Tibetan Plateau. *Sci. Total Environ.* 566–567, 279–287. doi: 10.1016/j.scitotenv.2016.05.081
- Zanne, A. E., Oberle, B., Dunham, K. M., Milo, A. M., Walton, M. L., Young, D. F., et al. (2015). A deteriorating state of affairs: how endogenous and exogenous factors determine plant decay rates. *J. Ecol.* 103, 1421–1431. doi: 10.1111/1365-2745.12474
- Zeng, L., He, W., Teng, M., Luo, X., Yan, Z., Huang, Z., et al. (2018). Effects of mixed leaf litter from predominant afforestation tree species on decomposition rates in the Three Gorges Reservoir. China. *Sci. Total Environ.* 639, 679–686. doi: 10.1016/j.scitotenv.2018.05.208
- Zhang, C., Yang, W., Yue, K., Huang, C., Peng, Y., Wu, F. Z., et al. (2015). Soluble nitrogen and soluble phosphorus dynamics during foliar litter decomposition in winter in alpine forest streams. *Chinese J. Appl. Ecol.* 26, 1601–1608.
- Zhang, C., Yang, W., Yue, K., Huang, L., Peng, Y., Wu, F., et al. (2016). Dynamics pattern of dissolved carbon content during foliar litter decomposition in winter in alpine forest streams. *Acta Sci. Circumstantiae* 36, 792–801.
- Zhang, M., Cheng, X., Geng, Q., Shi, Z., Luo, Y., Xu, X., et al. (2019). Leaf litter traits predominantly control litter decomposition in streams worldwide. *Global Ecol. Biogeography* 28, 1469–1486. doi: 10.1111/geb.12966
- Zhang, Q., and Lou, Z. (2011). The environmental changes and mitigation actions in the Three Gorges Reservoir region. China. *Environ. Sci. Policy* 14, 1132–1138. doi: 10.1016/j.envsci.2011.07.008
- Zhang, X., Song, C., Mao, R., Yang, G., Tao, B., Shi, F., et al. (2014). Litter mass loss and nutrient dynamics of four emergent macrophytes during aerial decomposition in freshwater marshes of the Sanjiang plain, Northeast China. *Plant Soil* 385, 139–147. doi: 10.1007/s11104-014-2217-3
- Zhang, Z. (2018). *Differences and Their Influencing Factors in Soil and Vegetation Between Water-Level-Fluctuation Zone and Riparian Zone in the Three Gorges Reservoir*. Wuhan: HuaZhong Agricultural University.
- Zheng, J., Arif, M., Zhang, S., Yuan, Z., Zhang, L., Dong, Z., et al. (2021). The convergence of species composition along the drawdown zone of the Three Gorges Dam Reservoir, China: implications for restoration. *Environ. Sci. Poll. Res.* doi: 10.1007/s11356-021-13774-0 Online ahead of print.

**Conflict of Interest:** The authors declare that the research was conducted in the absence of any commercial or financial relationships that could be construed as a potential conflict of interest.

Copyright © 2021 Chen, Arif, Wang, Chen and Li. This is an open-access article distributed under the terms of the Creative Commons Attribution License (CC BY). The use, distribution or reproduction in other forums is permitted, provided the original author(s) and the copyright owner(s) are credited and that the original publication in this journal is cited, in accordance with accepted academic practice. No use, distribution or reproduction is permitted which does not comply with these terms.