



Differential Responses of *Cucurbita pepo* to *Podosphaera xanthii* Reveal the Mechanism of Powdery Mildew Disease Resistance in Pumpkin

Shuwu Zhang^{1,2}, Jia Liu¹, Bingliang Xu^{1,2*} and Jingjiang Zhou¹

¹ College of Plant Protection, Gansu Agricultural University, Biocontrol Engineering Laboratory of Crop Diseases and Pests of Gansu Province, Lanzhou, China, ² Gansu Provincial Key Laboratory of Arid Land Crop Science, Gansu Agricultural University, Lanzhou, China

OPEN ACCESS

Edited by:

Essaid Ait Barka,
Université de Reims
Champagne-Ardenne, France

Reviewed by:

Mihir Kumar Mandal,
Clafin University, United States
Wen-Ming Wang,
Sichuan Agricultural University, China

*Correspondence:

Bingliang Xu
xubl@gsau.edu.cn

Specialty section:

This article was submitted to
Plant Pathogen Interactions,
a section of the journal
Frontiers in Plant Science

Received: 24 November 2020

Accepted: 09 February 2021

Published: 12 April 2021

Citation:

Zhang S, Liu J, Xu B and Zhou J
(2021) Differential Responses
of *Cucurbita pepo* to *Podosphaera
xanthii* Reveal the Mechanism
of Powdery Mildew Disease
Resistance in Pumpkin.
Front. Plant Sci. 12:633221.
doi: 10.3389/fpls.2021.633221

Powdery mildew is one of the most destructive diseases and the major cause to the production losses of cucurbit worldwide. A number of strategies have been developed and applied to discover suitable and safer methods to manage the occurrence of powdery mildew disease in pumpkins (*Cucurbita pepo* L.), but information is limited in screening tolerant germplasm and exploring their mechanisms in preventing the disease occurrence at physiological, biochemical, and molecular levels. Therefore, we investigated the responses of two commercial pumpkin cultivars to *Podosphaera xanthii* infection. Compared with mock-inoculated seedlings, few small and sparse powdery areas were observed on the leaves of the Sixing F₁ cultivar on the 13th day after inoculation with *P. xanthii*, whereas a large number of diseased powdery areas and a layer of white powdery mildew were observed on the surface of Jin₁₂ F₁ leaves. The inoculation duration (7, 9, 11, and 13 days) significantly and continuously increased the disease incidence and index of pumpkin seedlings. The contents of H₂O₂, MDA, lignin, and total phenolics in the leaves of Sixing F₁ and Jin₁₂ F₁ cultivars were markedly increased after inoculation with *P. xanthii*. However, the Sixing F₁ cultivar exhibited much less reactive oxygen species (ROS) accumulation, a lower rate of lipid peroxidation, and a higher level of lignin and total phenolics contents after inoculation than the Jin₁₂ F₁ cultivar. Compared with untreated control pumpkin seedlings, significantly higher activities and gene expressions of the phenylpropanoids pathway enzymes (PAL and PPO), ROS scavenging defense enzymes (SOD, CAT, POD, and APX), and other salicylic acid (SA) signaling pathway marker genes were observed in the leaves of both cultivars after *P. xanthii* inoculation at different inoculation time points. These enhancements were significantly higher in Sixing F₁ than Jin₁₂ F₁. Our results indicate that the Sixing F₁ cultivar exhibited a much stronger ability in resistance to *P. xanthii* infection than the Jin₁₂ F₁ cultivar. Our results suggest that one possible mechanism of *C. pepo* cultivars to prevent the pathogen *P. xanthii* infection is by activating and enhancing the activity and gene expression of the phenylpropanoids pathway to synthesize phenolic substances and lignin, ROS scavenging defense enzymes to eliminate the harmful effects of ROS, and signaling pathway marker gene expression to improve plant disease resistance.

Keywords: *Cucurbita pepo*, powdery mildew, *Podosphaera xanthii*, disease incidence and index, reactive oxygen species, phenylpropanoids and SA pathways, antioxidative defense system, gene expression

INTRODUCTION

Powdery mildew is a common and widely distributed fungal disease that causes substantial yield and economic losses on a wide range of plants (Chen et al., 2020). Powdery mildew diseases are caused by many different species of fungi (Kusch and Panstruga, 2017; Babosha et al., 2020). *Podosphaera xanthii* has been considered as one of the most important pathogens that cause powdery mildew of cucurbit and reduce the cucurbit production worldwide (Tanaka et al., 2017). Pumpkin (*Cucurbita pepo* L.) is one of the most important vegetable crops for human nutrition worldwide (Hafez et al., 2018). Powdery mildew is one of the limiting factors that cause severely economic losses in pumpkin production by shortening the ripening and harvesting intervals, reducing photosynthesis and yields, and decreasing fruit quality in field and greenhouse (Cohen et al., 2000; Shi et al., 2007; Barickman et al., 2017). Normally, the pumpkin yield losses due to powdery mildew are 30–50% (El-Naggar et al., 2012).

In the past few years, strategies have been adapted to manage powdery mildew in agriculture, including the use of chemical and biological fungicides, and breeding resistance varieties (El-Alfy and Schlenk, 2002; Faostat, 2010). However, the application of chemical fungicides is not healthy and safe due to their hazardous effects on beneficial organisms, plants, animals, and humans, as well as pathogen resistance (Abdel-Monaim et al., 2012). The resistance to powdery mildew was first observed in cucumber (*Cucumis sativus* L. cv. Puerto Rico 37) (Smith, 1948); thereafter, a large number of resistant materials were found in South and East Asia (Morishita et al., 2003). Although biological control agents have been applied to control powdery mildew, their efficacy is low and affected by environmental conditions (Dik et al., 1998). Thus, effective and environmentally friendly control strategies are needed to overcome these problems. Screening of resistant pumpkin germplasm would be the best way for developing new cultivars to prevent the powdery mildew occurrence. But little is known about the specific knowledge for discovering and developing new resistant pumpkin varieties to prevent powdery mildew occurrence. The mechanisms and nature of pumpkin resistance to *P. xanthii* infection remain unresolved.

A number of studies have demonstrated that plants can develop appropriate defense mechanisms to recognize and resist against fungal infection through the activation of their complex defense responses (Dangl and Jones, 2001). One of the earliest responses is the rapid generation of reactive oxygen species (ROS) such as hydrogen peroxide (H_2O_2), hydroxyl radical (OH^-), and superoxide anion (O^{2-}) (Patykowski and Urbanek, 2003). ROS scavenging enzymes such as superoxide dismutase (SOD), peroxidase (POD), catalase (CAT), and ascorbate peroxidase (APX) play an essential role in regulating ROS levels and the extent of oxidative damage (Niu et al., 2018). The phenylpropanoid pathway is another defense response in higher plants (Irisarri et al., 2016; Hou et al., 2019). Phenylalanine ammonia-lyase (PAL) is the first enzyme that participates in the formation of a series of structurally different and defensive lignin and phenolic compounds (Vogt, 2010; Wang et al., 2013; Kamalipourazad et al., 2016; Han et al., 2017). Polyphenol oxidase (PPO) is another key enzyme in the synthesis of phenolic

compounds for defending against pathogens in plants (Niu et al., 2018). In addition, previous studies revealed that SA plays an important role in fighting biotrophic pathogen infection and establishing systemic acquired resistance (SAR) (Dong, 1998; Edgar et al., 2006; Vlot et al., 2008; Fu et al., 2012). However, to our knowledge, there is little published information regarding the mechanisms of different cultivars of pumpkin *C. pepo* in resistance to *P. xanthii* infection through the phenylpropanoids and salicylic acid (SA) signaling pathways, and antioxidative defense systems.

Therefore, the aims of the present study were to (i) evaluate the ability and effectiveness of two commercial pumpkin cultivars in resistance to *P. xanthii* infection, (ii) determine the defense responses of the commercial pumpkin cultivars to the *P. xanthii* inoculation at different time points, and (iii) explore the possible mechanisms involved in two different pumpkin cultivars in response to *P. xanthii* infection at physiological, biochemical, and molecular levels.

MATERIALS AND METHODS

Seeds Treatment

The seeds of two commercial pumpkin cultivars (Sixing F₁ and Jin₁₂ F₁) were selected and kindly provided by Wuwei Golden Apple Co., Ltd. The seeds with a uniform size were surface-sterilized with 5% NaOCl (v/v) for 3 min. Thereafter, all the surface-sterilized seeds were rinsed with sterile water five times and soaked in sterile water for 12 h for germination.

Greenhouse Experiments

The experiments were carried out in the greenhouse at Gansu Agricultural University in August 2013. The sterilized seeds were germinated in 9-cm Petri dishes and covered with two layers of absorbent cotton and blotter papers at a constant temperature of 25°C. The germinated seeds were planted in pots (12 cm in diameter) with 500 g of sterilized soil. Each pot was planted with 8 seeds and each cultivar had 12 pots (a total of 96 plants) after germination. The experiment was arranged in a completely randomized design in a greenhouse with the inside temperature maintained between 25 and 20°C (day and night), a photoperiod of 16L/8D, and a relative humidity of 60%. Irrigation was done twice weekly.

Podosphaera xanthii Identification and Inoculum Preparation

Pumpkin leaves infected with powdery mildew were collected from the field (Wuwei, China) on July 15, 2013 for microscopic observations. The pathogen was identified to be *P. xanthii* according to the published papers (McGrath and Thomas, 1996; Shin, 2000). The artificial inoculation of pumpkin seedlings was performed manually by dusting the sporulated leaves, and the plants with the *P. xanthii* isolate were kept for 20 days in a greenhouse. Five plants at the four-leaf stage with relatively consistent growth were selected, and three leaves of each plant were inoculated with the suspension of powdery mildew fungal

pathogen *P. xanthii* spores by the smear method. The inoculated plants were placed in a greenhouse for the development of powdery mildew at 25 and 20°C (day and night), relative humidity of 60%, and 16L/8D photoperiod. Control plants (mock-inoculated) were inoculated with the same volume of sterile water and maintained separately from the inoculated plants in the same greenhouse. The disease incidence, the disease index, the total lignin content, the total phenolic content, the hydrogen peroxide content, the lipid peroxidation content, the activity and gene expression level of phenylpropanoid pathway defense enzymes and ROS scavenging enzymes, and the expression level of SA signaling pathway marker genes at different time points were measured and calculated every 2 days after inoculation.

Disease Incidence and Index Determination

The disease incidence and index of both Sixing F₁ and Jin₁₂ F₁ cultivars were observed and recorded for both the inoculated and mock-inoculated plants every 2 days on 1, 3, 5, 7, 9, 11, and 13 days post inoculation (dpi). Five plants from each treatment and control were used as one independent replicate per time point. Twelve such replicates were set up per treatment. Disease severity was recorded on the individual pot of each cultivar. Based on the powdery mildew symptoms developed on the host plants, a scale of 1–9 of increasing disease severity was used according to the standard described by Liu et al. (2006).

Scale levels:

- 0: no symptoms;
- 1: the infected areas less than 30% in the front of the leaves and no symptoms in the reverse of the leaves;
- 3: the infected areas greater than 30% in the front of the leaves and less than 10% in the reverse of the leaves;
- 5: the infected areas greater than 30 and 10% in the front and reverse of the leaves, respectively, and a few lesions appeared on the petioles;
- 7: the powdery mildew covered in the front of the leaves and the infected areas greater than 10% in the reverse of the leaves, and more lesions appeared on the petioles and a few on the main stems;
- 9: the powdery mildew covered in the front of the leaves, petioles, and main stems, and the infected areas greater than 10% in the reverse of the leaves.

The calculation formulas for the disease incidence and index are as follows:

$$\text{Disease incidence (\%)} = (\text{NIL}/\text{TNIL}) \times 100 \quad (1)$$

where NIL is the number of infected leaves, and TNIL is the total number of investigated leaves.

$$\text{Disease index} = (\sum \text{NDL} \times \text{GLDS}) / (\text{TNIL} \times \text{THGL}) \times 100 \quad (2)$$

where NDL is the number of diseased leaves in each level; GLDS is the grade level of disease severity; TNIL is the total number of investigated leaves; and THGL is the highest-grade level.

Leaf Cell Wall Isolation and Lignin Content Determination

The leaf cell walls were isolated according to the method described by Eskandari et al. (2018). Briefly, fresh leaf sample (0.5 g) was frozen and ground to powder in liquid nitrogen. The sample powder was homogenized in distilled water and then centrifuged at 10,000 g for 10 min. The precipitation was washed with absolute ethanol, rinsed with the mixture solution of chloroform and methanol (v/v = 1:2), and then washed with acetone three times. The cell wall pellet was filtered and finally dried overnight at 35°C. The residue (cell wall) was collected and kept at room temperature until use.

The content of lignin was determined and assayed by following the procedure of Iiyama and Wallis (1990). The cell wall preparation (5 mg) was treated at 70°C for 30 min with the mixture solution (2.5 ml) of 5% acetyl bromide and AcHO (w/w) and 0.1 ml of 70% HClO. After cooling, the reaction mixture was treated with 50 ml of 2 M NaOH and AcHO. The lignin content was determined by measuring the absorbance at 280 nm and calculated using a specific absorption coefficient of 20.0 g⁻¹ l cm⁻¹.

Total Phenolics Content Determination

The content of total phenolics was measured according to the method described by Singleton and Rossi (1965) with a minor modification. The fresh leaf sample (0.5 g) was ground with quartz sand and then extracted with 70% ethanol (10 ml) for 10 min. The mixture was centrifuged at 12,000 g for 20 min. The absorbance of the supernatant at 760 nm was used to determine the total phenolic content and expressed as mg g⁻¹ FW.

Phenylpropanoid Pathway Enzyme Activity Determination

The fresh leaf sample (0.5 g) was homogenized in a 6 ml ice-cold borate buffer (5 mM, pH 8.8) using a pre-chilled mortar and pestle, and then centrifuged at 8,000 g for 20 min at 4°C. The supernatant was mixed with 0.02 M phenylalanine and distilled water and used as crude extracts. The extract was incubated at 30°C for 30 min and then measured at 290 nm for the determination of PAL activity (Ruiz et al., 1999; Hu et al., 2009), and at 420 nm for the determination of PPO activity following the oxidation of catechol (Chang et al., 2000). The activity of PAL and PPO was expressed as U min⁻¹ g⁻¹ FW.

Hydrogen Peroxide (H₂O₂) and Lipid Peroxidation (MDA) Content Determination

For the determination of the H₂O₂ content in the leaves of different pumpkin cultivars, the fresh leaf sample (0.5 g) was homogenized in 5 ml of precooled HClO₄ (1.0 M) using the pre-chilled mortar and pestle and then centrifuged at 10,000 g for 10 min. The content of H₂O₂ was determined and calculated according to the method described by Willekens et al. (1997) and expressed as μmol g⁻¹ FW.

The level of lipid peroxidation was determined by quantifying the MDA accumulation in the leaves of different pumpkin

cultivars according to the method described by Hodges et al. (1999) and Tian et al. (2015) with some modifications. Briefly, the fresh leaf sample (0.5 g) was homogenized in 2.5 ml of 0.1% trichloroacetic acid and then centrifuged at 10,000 g for 15 min. The absorbance of the supernatant was recorded at a 532-nm wavelength. The content of MDA was expressed as nmol g⁻¹ FW.

ROS Scavenging Enzyme Activity Determination

The fresh leaf sample (1 g) was homogenized in an ice-cold buffer (pH 7.8) with 10 ml of 25 mM potassium phosphate containing 0.2 mM EDTA and 2% polyvinylpyrrolidone. The homogenate was centrifuged at 10,000 g for 25 min at 4°C, and then the supernatant was used as an enzyme extract to determine the activity of ROS scavenging enzymes (SOD, POD, CAT, and APX). All spectrophotometric analyses were conducted on a spectrophotometer (SP-756P, Shanghai, China). The activity of ROS scavenging enzymes was expressed as U g⁻¹ min⁻¹ FW.

The SOD activity was measured according to the method of Giannopolitis and Ries (1977) with a minor modification. The POD activity was determined and assayed according to the method described by Chance and Maehly (1955) and Cakmak and Marschner (1992) with a minor modification. The CAT activity was measured according to Patra et al. (1978) by measuring the decrease in the amount of the H₂O₂ decomposing at the absorbance of 240 nm. The APX activity was measured according to Nakano and Asada (1981) by estimating the rate of ascorbate oxidation at 290 nm.

Total RNA Extraction and First-Strand cDNA Synthesis

The leaf samples were collected every 2 days post inoculation (dpi) for both inoculated and mock-inoculated seedlings on

1, 3, 5, 7, 9, 11, and 13 days dpi from both Sixing F₁ and Jin₁₂ F₁ cultivars for total RNA extractions. Five plants from each treatment were used as one independent replicate per time point. Total RNA extraction and first-strand cDNA synthesis were carried out according to the methods described by Zhang et al. (2016).

Real-Time Quantitative PCR (RT-qPCR) Analysis

The gene expression level of phenylpropanoid pathway defense enzymes (*PAL* and *PPO*) (Bezold et al., 2005; Zhu et al., 2018), ROS scavenging enzymes (*SOD*, *POD*, *CAT*, *APX*) (Yao et al., 2018; Liu et al., 2020), and SA signaling pathway marker genes (*PR1*, *PR2* and *ICS1*) (Wang et al., 2010; Yan, 2018; Luan et al., 2019) was determined in pumpkin leaves inoculated with *P. xanthii* and mock-inoculated pumpkin leaves at different time points after inoculation. The procedure of RT-qPCR was performed following the methods of Zhang et al. (2016). The sequences of the primers used in the RT-qPCR analyses were designed using the Primer Express 3.0 software based on the sequences of target genes in NCBI and listed in **Table 1**. The actin gene of pumpkin was used as an internal control (Bezold et al., 2005). The gene expression level was determined using the method of 2^{-ΔΔCt} (Livak and Schmittgen, 2001).

Statistical Analysis

The data were subjected to variance analysis (ANOVA) using SPSS Version 16.0 (SPSS Inc., Chicago, IL). Each treatment had 12 replications. Duncan's multiple range test was computed using the standard error and T values of adjusted degrees of freedom. The differences between treatments were considered significant at the level of *P* < 0.05.

TABLE 1 | Gene-specific PCR primers for target genes and Actin gene.

Genes name	NCBI accession number	Primers sequence	References
PAL (F)	CD726828.1	5'-AACTTCTCCTCAATGGCTTGGT-3'	Bezold et al., 2005
PAL (R)		5'-TGAAACATCAATCAAAGGGTTG-3'	
PPO (F)	KR819890	5'-CTAGCCGTGGAAACCGA	Zhu et al., 2018
PPO (R)		5'-TGATTGGCTCACAGTGGA	
POD (F)	MF988305	5'-TTTTATTTGGAGCCCTTATGC-3'	Liu et al., 2020
POD (R)		5'-GTCCGTTGAGTTCACTGTGC-3'	
SOD (F)	AF009734	5'-GTCTACTGGACCACATTACAACC-3'	Yao et al., 2018
SOD (R)		5'-CACAAACAGCCCTTCCGATAA-3'	
CAT (F)	D55646	5'-CGCAAGAAGATCGTGTCAA-3'	Yao et al., 2018
CAT (R)		5'-CTTAGGAAGCAACAAAGGCG-3'	
APX (F)	KF954415	5'-GCCTTGACATTGCTGTGA-3'	Yao et al., 2018
APX (R)		5'-GAACCCCTTGGTAGCATCA-3'	
PR1 (F)	DQ641122	F: AACTCTGGCGGACCTTAC	Wang et al., 2010
PR1 (R)		R: GACTTCCTCCCACTACT	
PR2 (F)	XM_008445504.2	F: TCTTGGTCTTCTTGTGCC	Luan et al., 2019
PR2 (R)		R: GAGCATCAAGTGAACCTC	
ICS1 (F)	-	F: GCATTCACTCCGGGATTAT	Yan, 2018
ICS1 (R)		R: AAGGTGCGAGGAAGATG	
ACT (F)	-	5'-TgYgACAATggAACWggAATg-3'	Bezold et al., 2005
ACT (R)		5'-CATCTgYTggAARgTgCTgAg-3'	

F represents forward; R represents reverse.

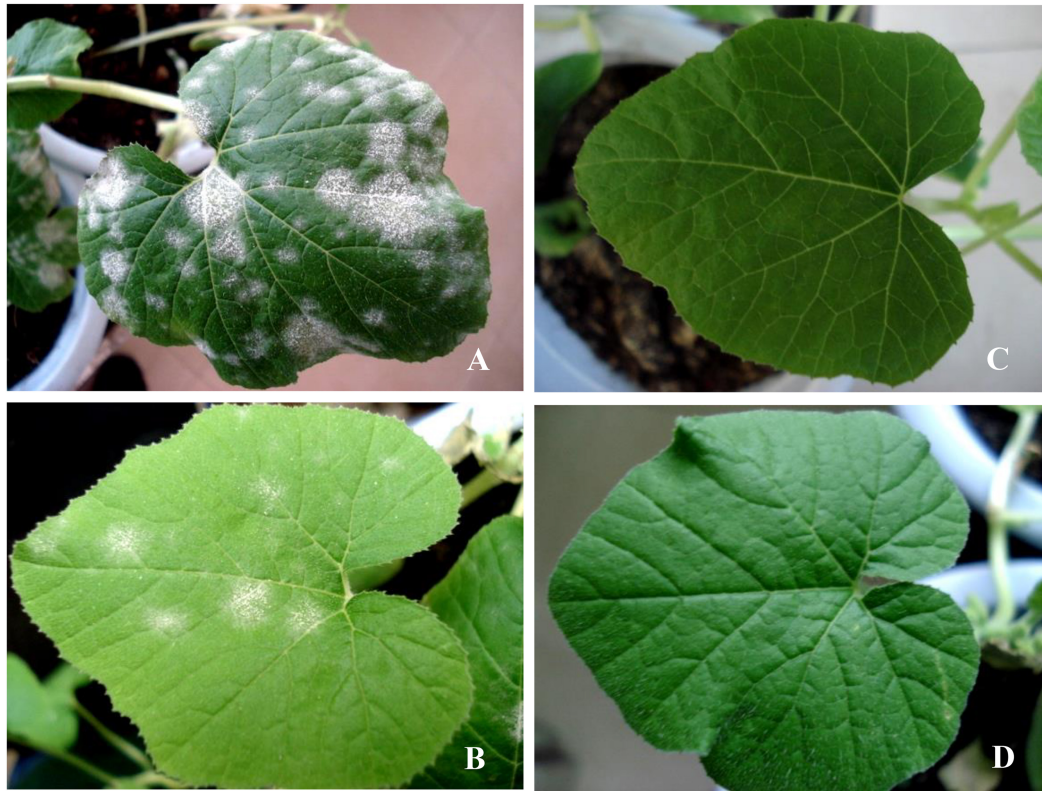


FIGURE 1 | The symptoms of different cultivars of *Cucurbita pepo* on the 13th day after inoculation with the pathogen of *Podosphaera xanthii*. **(A)** The cultivar of Jin₁₂ F₁ after inoculation with *P. xanthii*; **(B)** the cultivar of Sixing F₁ after inoculation with *P. xanthii*; **(C)** the cultivar of Jin₁₂ F₁ after inoculation with sterile water but not *P. xanthii*; and **(D)** the cultivar of Sixing F₁ after inoculation with sterile water but not *P. xanthii*.

RESULTS

Symptoms of *C. pepo* After Inoculation With *P. xanthii*

A large number of diseased powdery areas and a layer of white powdery mildew were observed on the surface of Jin₁₂ F₁ leaves (**Figure 1A**) on the 13th day after inoculation with *P. xanthii* in comparison to the leaves of the mock-inoculated Jin₁₂ F₁ seedlings (**Figure 1C**). However, small and sparse powdery areas were observed on the leaves of the Sixing F₁ cultivar (**Figure 1B**), and no diseased powdery area was observed on the leaves of the mock-inoculated Sixing F₁ (**Figure 1D**).

Disease Severity of *C. pepo* After Inoculation With *P. xanthii*

The cultivars of Jin₁₂ F₁ and Sixing F₁ inoculated with *P. xanthii* began to show the disease symptoms at the fifth and seventh day after the inoculation. The disease incidence and index were significantly different between the cultivars of Sixing F₁ and Jin₁₂ F₁ (**Tables 2, 3**) ($P < 0.05$) after inoculation with *P. xanthii*. In contrast, the mock-inoculated seedlings grew normally and had no disease symptoms during the inoculation.

The disease incidence and index of two pumpkin cultivars were significantly and continuously increased by the increase

in the inoculation time (7, 9, 11, and 13 days). The disease incidence and index of Jin₁₂ F₁ cultivar were significantly higher than those of the Sixing F₁ cultivar. At day 13, the disease incidence and index of the Jin₁₂ F₁ cultivar were 80.0% and 72.6, respectively, whereas they were only 22.3% and 17.7 in the Sixing F₁ cultivar, respectively. In addition, the Jin₁₂ F₁ cultivar began to show symptoms at the fifth day after inoculation, while the Sixing F₁ cultivar began to show symptoms at the seventh day after inoculation. Furthermore, the expansion speed of the diseased powdery area in the Jin₁₂ F₁ cultivar was faster than in the Sixing F₁ cultivar with the increase in the inoculation time (**Tables 2, 3**).

Lignin and Total Phenolics Contents in Pumpkin Seedlings

The lignin and total phenolics contents in the leaves of the cultivars of Sixing F₁ and Jin₁₂ F₁ were increased from 1 to 9 or 11 days by the treatment with *P. xanthii* and peaked on the 9th and 11th days. The levels of lignin and total phenolics of the Sixing F₁ cultivar were significantly higher in comparison to those of the Jin₁₂ F₁ cultivar. The average contents of lignin and total phenolics on the 9th to 11th days were significantly increased by the inoculation to 21.24 and 21.09% in the leaves of the Sixing

TABLE 2 | The disease incidence of different cultivars of *Cucurbita pepo* after inoculation with *Podosphaera xanthii*.

Cultivars	Treatments	Days post inoculation (dpi)						
		1	3	5	7	9	11	13
		Disease incidence (%)						
Sixing F1	Treatment	0.0 a	0.0 a	0.0 b	6.7 b	16.7 b	21.3 b	22.3 b
	Control	0.0 a	0.0 a	0.0 b	0.0 c	0.0 c	0.0 c	0.0 c
Jin12 F1	Treatment	0.0 a	0.0 a	3.3 a	26.7 a	60.0 a	76.7 a	80.0 a
	Control	0.0 a	0.0 a	0.0 b	0.0 c	0.0 c	0.0 c	0.0 c

Data are means of 12 replicates. Different letters in the same column denote significant differences at the $P < 0.05$ level by Duncan's new multiple range test ($n = 12$). In the two treatments, pumpkin seedling leaves were inoculated with *P. xanthii*, whereas in the two controls, pumpkin seedling leaves were inoculated with sterile water but not *P. xanthii*.

TABLE 3 | The disease index of different cultivars of *Cucurbita pepo* after inoculation with *Podosphaera xanthii*.

Cultivars	Treatments	Days post inoculation (dpi)						
		1	3	5	7	9	11	13
		Disease index						
Sixing F ₁	Treatment	0.0 a	0.0 a	0.0 b	4.7 b	13.3 b	16.4 b	17.7 b
	Control	0.0 a	0.0 a	0.0 b	0.0 c	0.0 c	0.0 c	0.0 c
Jin ₁₂ F ₁	Treatment	0.0 a	0.0 a	3.3 a	16.7 a	40.7 a	46.0 a	72.6 a
	Control	0.0 a	0.0 a	0.0 b	0.0 c	0.0 c	0.0 c	0.0 c

Data are means of 12 replicates. The different letters and treatments are detailed in the footnote of **Table 2**.

TABLE 4 | Lignin and total phenolic content in different cultivars of *Cucurbita pepo* seedlings after inoculation with *Podosphaera xanthii*.

Cultivars	Treatments	Days post inoculation (dpi)						
		1	3	5	7	9	11	13
		Lignin content (% of cell wall dry weight)						
Sixing F ₁	Treatment	2.56 a	2.89 a	3.28 a	5.08 a	6.56 a	6.52 a	6.13 a
	Control	2.43 b	2.78 b	3.09 b	4.25 b	5.34 b	5.45 b	5.25 b
Jin ₁₂ F ₁	Treatment	2.12 c	2.24 c	2.67 c	3.11 c	3.98 c	4.02 c	3.96 c
	Control	2.01 c	2.15 c	2.48 d	2.81 d	3.51 d	3.61 d	3.74 d
		Total phenolics content (mg g⁻¹ FW)						
Sixing F ₁	Treatment	3.62 a	3.85 a	3.98 a	4.29 a	4.79 a	4.81 a	4.25 a
	Control	3.35 b	3.42 b	3.62 b	3.98 b	4.02 b	3.91 c	4.06 b
Jin ₁₂ F ₁	Treatment	3.34 b	3.57 b	3.72 b	3.89 b	4.21 b	4.33 b	3.98 bc
	Control	3.01 c	3.12 c	3.23 c	3.45 c	3.64 c	3.56 d	3.54 c

Data are means of 12 replicates. The different letters and treatments are detailed in the footnote of **Table 2**.

F₁ cultivar and to 12.38 and 18.65% in the leaves of the Jin₁₂ F₁ cultivar in comparison to the control, respectively (**Table 4**).

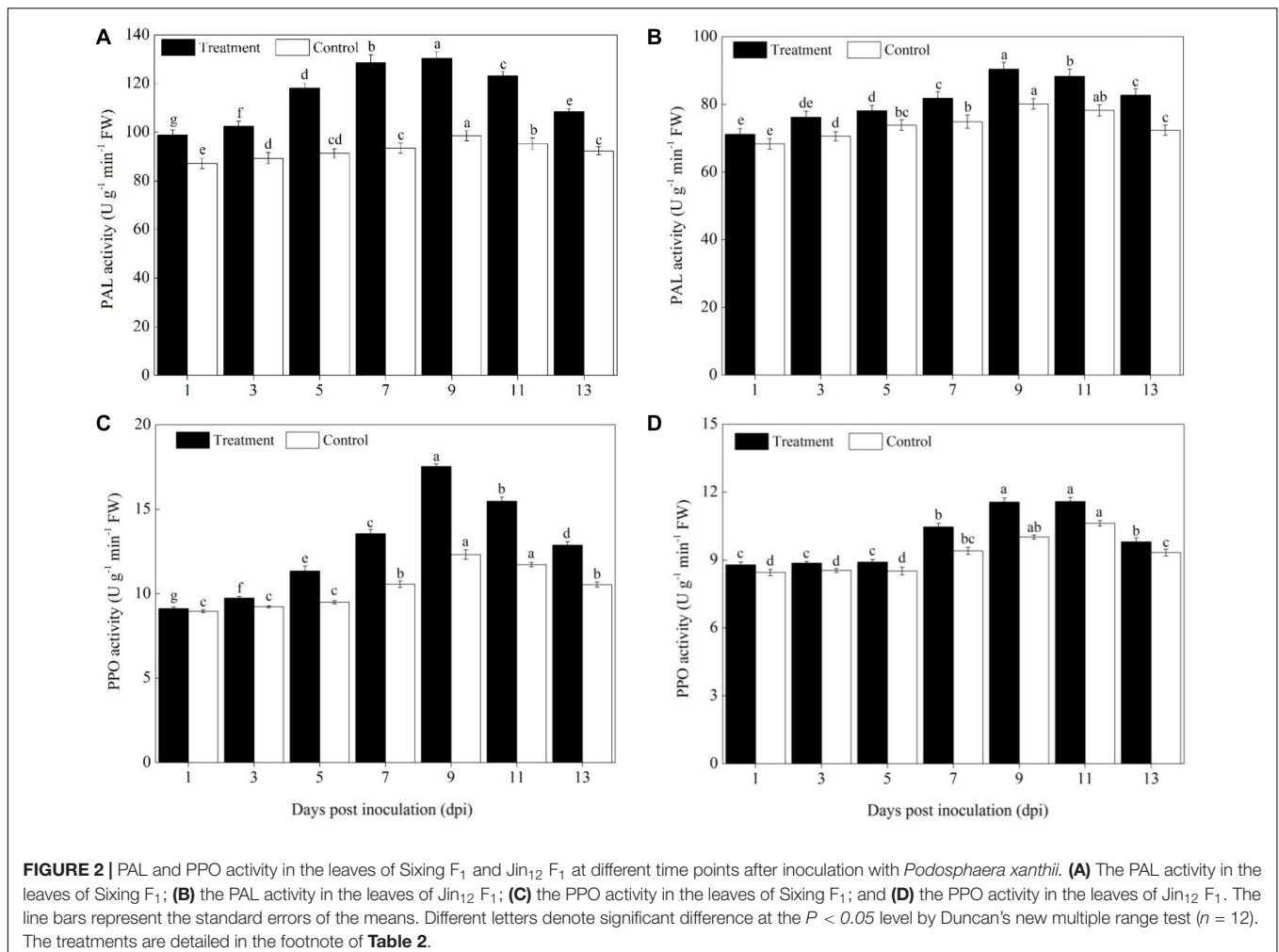
Activity of the Phenylpropanoids Pathway Defense Enzymes

The activities of the phenylpropanoids pathway enzymes PAL and PPO in different pumpkin cultivars (Sixing F₁ and Jin₁₂ F₁) were increased significantly on the 5th day after the *P. xanthii* inoculation, peaked on the 9th or 11th day, and then declined gradually (**Figure 2**). However, the activity of PAL and PPO differed significantly between the Sixing F₁ cultivar and the Jin₁₂ F₁ cultivar. A higher level of PAL and PPO activity was detected in Sixing F₁ leaves than in Jin₁₂ F₁ leaves. Compared with those of

the untreated control, the PAL and PPO activities in the leaves of the Sixing F₁ cultivar were increased by 32.52% (**Figure 2A**) and 42.42% (**Figure 2C**) on the 9th day, respectively. In contrast, the PAL and PPO activities in the leaves of the Jin₁₂ F₁ cultivar were increased by 12.84% (**Figure 2B**) and 15.43% (**Figure 2D**) on the 9th day, respectively.

Hydrogen Peroxide (H₂O₂) and Lipid Peroxidation (MDA) Contents in Pumpkin Seedling

The H₂O₂ and MDA contents of Sixing F₁ and Jin₁₂ F₁ seedling leaves were increased with the duration of post inoculation with *P. xanthii*, peaked on the 9th and 11th days, and then declined



gradually. The H₂O₂ and MDA contents in the Jin₁₂ F₁ leaves were significantly higher than those in the Sixing F₁ leaves. The maximum H₂O₂ and MDA contents were increased significantly by 26.83 and 26.42% in the Sixing F₁ leaves and 27.08 and 28.32% in the Jin₁₂ F₁ leaves on the 9th and 11th days after inoculation with *P. xanthii*, respectively, compared with those of control leaves inoculated with sterile water (**Table 5**).

Activity of ROS Scavenging Defense Enzymes

The activity of ROS scavenging enzymes (SOD, POD, CAT, and APX) was significantly increased in the cultivars of Sixing F₁ and Jin₁₂ F₁ after being inoculated with the pathogen of *P. xanthii* from the 3rd to 11th day in comparison to the control (**Figure 3**). In addition, a higher activity of ROS scavenging enzymes was observed in the leaves of the Sixing F₁ cultivar in comparison to the Jin₁₂ F₁ cultivar.

The SOD induction reached its maximum from the 7th to 9th day in the leaves of Sixing F₁ and Jin₁₂ F₁ after inoculation and then declined. Compared with the control seedlings inoculated with sterile water, the average SOD activity was increased by 28.47% in the Sixing F₁ leaves (**Figure 3A**) and 11.48% in the Jin₁₂

F₁ leaves (**Figure 3B**) on the 7th and 9th days after inoculation with *P. xanthii*. In addition, the activity of SOD in the leaves of the Sixing F₁ cultivar was significantly higher than in the leaves of the Jin₁₂ F₁ cultivar. The average SOD activity in the Sixing F₁ leaves was 30.33 U g⁻¹ min⁻¹ FW, whereas it was 22.15 U g⁻¹ min⁻¹ FW in the Jin₁₂ F₁ leaves on the 7th and 9th days after inoculation.

The CAT activity in the Sixing F₁ leaves was significantly increased up to the 7th and 9th days, whereas in the Jin₁₂ F₁ leaves, it was significantly increased up to the 9th and 11th days after inoculation, and then declined in all the treatments. However, the CAT activity of the Sixing F₁ cultivar was significantly higher than that of the Jin₁₂ F₁ cultivar. The CAT activity on the 9th day after inoculation was 25.61 U g⁻¹ min⁻¹ FW in the Sixing F₁ leaves, whereas it was 19.45 U g⁻¹ min⁻¹ FW in the Jin₁₂ F₁ leaves. The CAT activity on the 9th day after being inoculated with *P. xanthii* was increased by 20.65% in Sixing F₁ leaves (**Figure 3C**), whereas it was increased by 1.57% in the Jin₁₂ F₁ leaves (**Figure 3D**) in comparison to those in the control leaves inoculated with sterile water but not *P. xanthii*.

The inoculation of *P. xanthii* induced the maximum (peak) level of POD activity in the cultivars of Sixing F₁ and Jin₁₂ F₁ on the 9th and 11th days, respectively, and thereafter it declined.

TABLE 5 | H₂O₂ and MDA content in different cultivars of *Cucurbita pepo* seedlings after inoculation with *Podosphaera xanthii*.

Cultivars	Treatments	Days post inoculation (dpi)						
		1	3	5	7	9	11	13
		H₂O₂ (μ mol g⁻¹ FW)						
Sixing F ₁	Treatment	0.25 c	0.28 b	0.39 a	0.46 b	0.52 b	0.47 b	0.38 c
	Control	0.23 d	0.25 c	0.32 c	0.37 d	0.41 d	0.43 c	0.35 d
Jin ₁₂ F ₁	Treatment	0.29 a	0.31 a	0.37 b	0.48 a	0.61 a	0.58 a	0.49 a
	Control	0.27 b	0.28 b	0.32 c	0.41 c	0.48 c	0.48 b	0.44 b
		MDA (nmol g⁻¹ FW)						
Sixing F ₁	Treatment	2.45 c	2.91 b	3.45 b	4.05 c	4.61 c	4.69 c	4.35 c
	Control	2.21 d	2.45 c	2.88 c	3.27 d	3.68 d	3.71 d	3.57 d
Jin ₁₂ F ₁	Treatment	2.87 a	3.35 a	3.68 a	5.07 a	5.31 a	6.66 a	5.98 a
	Control	2.64 b	2.85 b	3.56 b	4.68 b	5.08 b	5.19 b	4.94 b

Data are means of 12 replicates. The different letters and treatments are detailed in the footnote of **Table 2**.

The POD activity in the Sixing F₁ leaves was increased by 19.19% (**Figure 3E**) on the 9th day and 9.21% in the Jin₁₂ F₁ leaves (**Figure 3F**) on the 11th day after being inoculated with *P. xanthii* in comparison to the control seedlings inoculated with sterile water. It was significantly higher in the Sixing F₁ cultivar than in the Jin₁₂ F₁ cultivar, with a maximum activity of 10.33 U g⁻¹ min⁻¹ FW in the Sixing F₁ leaves on the 9th day and of 8.07 U g⁻¹ min⁻¹ FW in the Jin₁₂ F₁ leaves on the 11th day after inoculation.

Increased activities of APX were observed on the leaves of the Sixing F₁ and Jin₁₂ F₁ cultivars by the inoculation with *P. xanthii*, and the induction reached its maximum on the 7th and 9th days and thereafter it declined. The APX activity was 5.60 U g⁻¹ min⁻¹ FW and 5.41 U g⁻¹ min⁻¹ FW in the Sixing F₁ leaves and 4.54 U g⁻¹ min⁻¹ FW and 4.57 U g⁻¹ min⁻¹ FW in the Jin₁₂ F₁ leaves on the 7th and 9th days after inoculation, respectively. The APX activity was increased by 30.05 and 18.64% in the Sixing F₁ leaves (**Figure 3G**) and by 9.57 and 11.44% in the Jin₁₂ F₁ leaves (**Figure 3H**) on the 7th and 9th days, respectively, after being inoculated with *P. xanthii* in comparison to the control seedlings inoculated with sterile water.

Levels of Defense Genes Expression

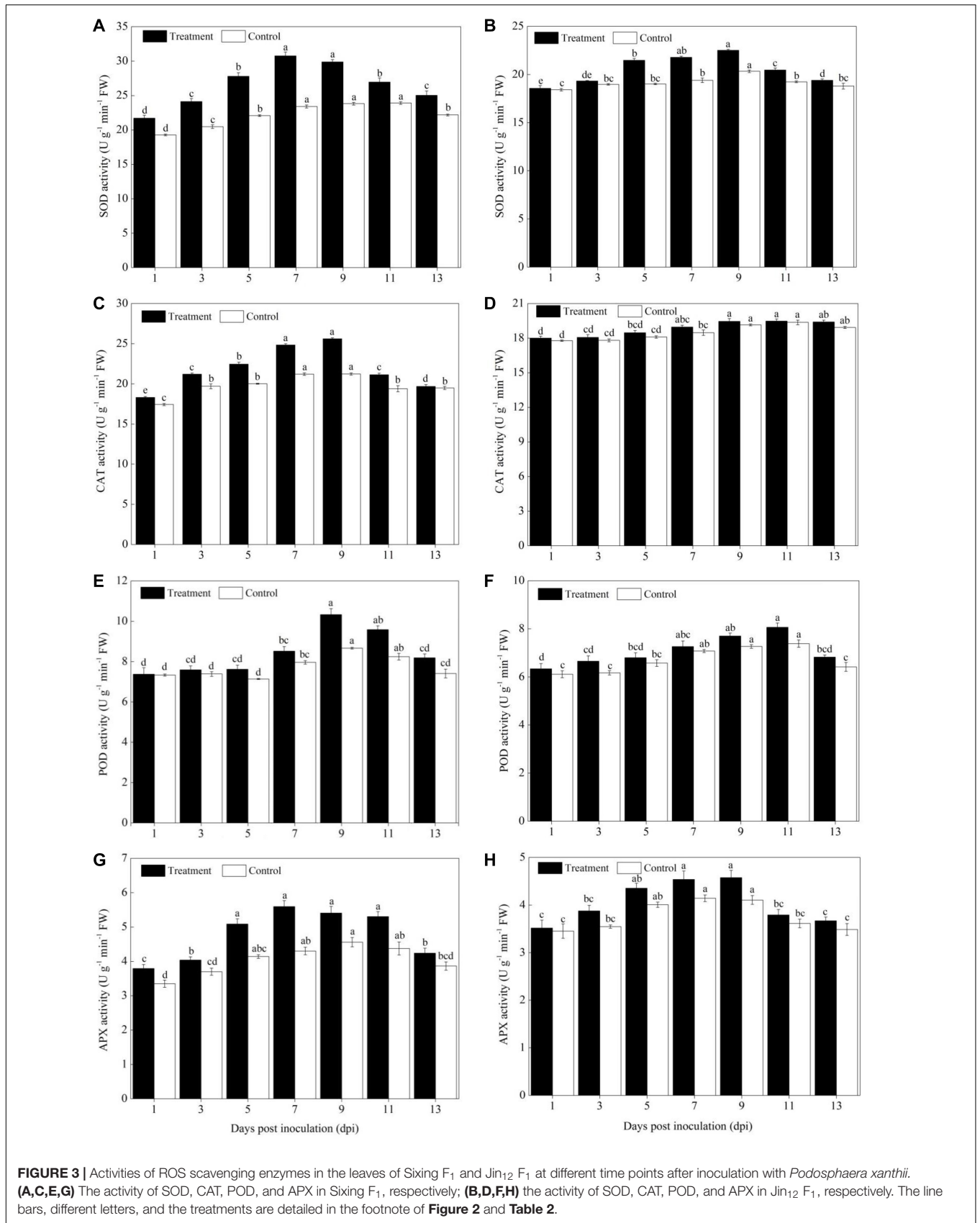
Compared with pumpkin leaves inoculated with sterile water, the expression levels of *PAL*, *PPO*, *SOD*, *POD*, *CAT*, *APX*, *PR1*, *PR2*, and *ICS1* genes in the Sixing F₁ and Jin₁₂ F₁ leaves were significantly upregulated after inoculation with *P. xanthii* at different time points (**Figures 4–6**). The expression levels of *PAL*, *PPO*, *SOD*, *CAT*, *POD*, *APX*, *PR1*, *PR2*, and *ICS1* genes reached their maximum on the 7th, 9th, and 11th days after inoculation, and thereafter, they declined gradually in all the treatments. Also, there were significant differences in the expression levels of *PAL*, *PPO*, *SOD*, *POD*, *CAT*, *APX*, *PR1*, *PR2*, and *ICS1* genes between the Sixing F₁ cultivar and the Jin₁₂ F₁ cultivar at different time points after inoculation. The expression levels of *PAL* (**Figure 4A**), *PPO* (**Figure 4C**), *SOD* (**Figure 5A**), *CAT* (**Figure 5C**), *POD* (**Figure 5E**), *APX* (**Figure 5G**), *PR1* (**Figure 6A**), *PR2* (**Figure 6C**), and *ICS1* (**Figure 6E**) genes in the Sixing F₁ leaves were significantly higher than those in the Jin₁₂ F₁ leaves (**Figures 4B,D, 5B,D,F,H, 6B,D,F**). The average

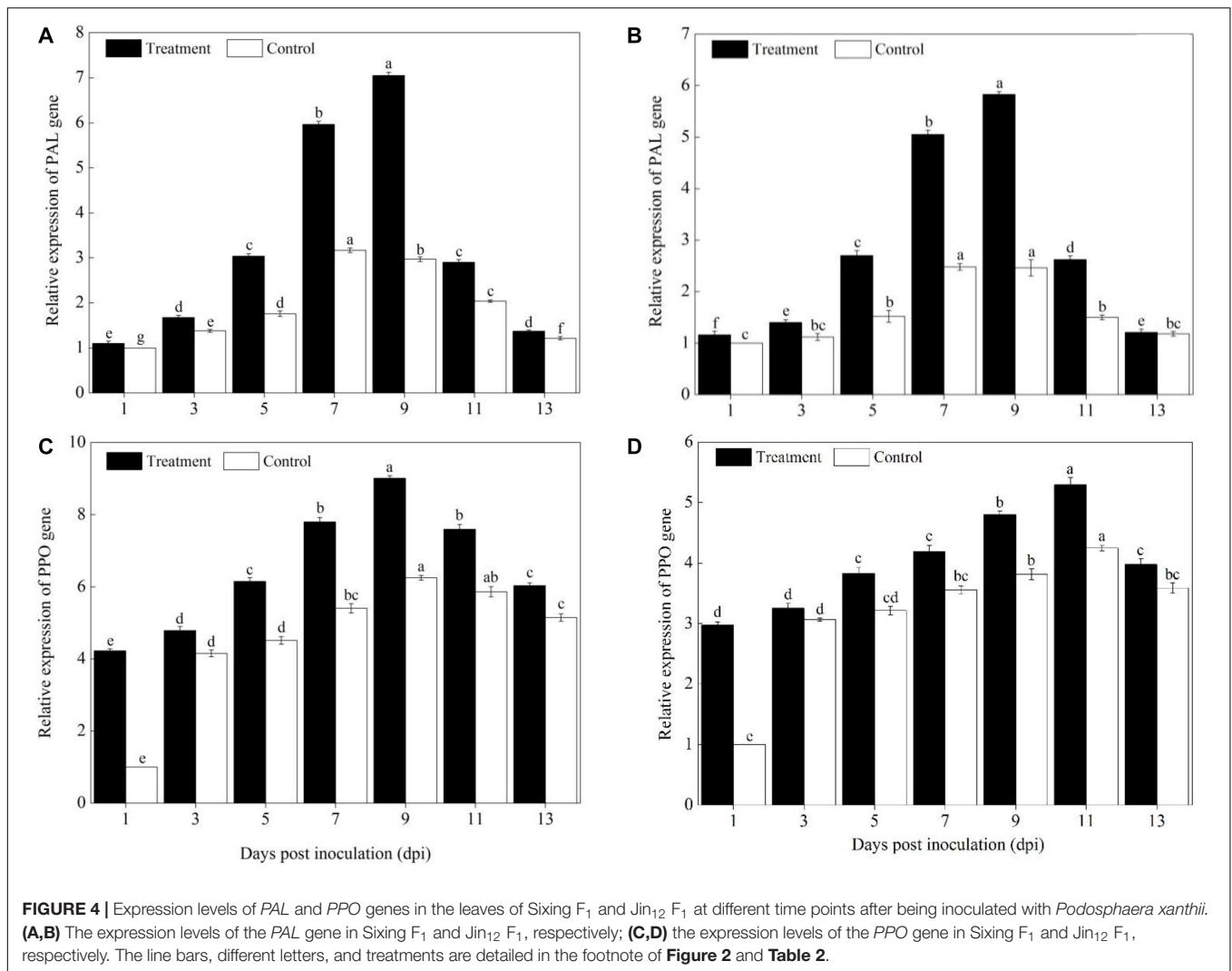
expression levels of *PAL*, *PPO*, *SOD*, *CAT*, *POD*, *APX*, *PR1*, *PR2*, and *ICS1* genes in the Sixing F₁ leaves were 1.16-, 1.61-, 1.46-, 1.35-, 1.19-, 1.23-, 1.38-, 1.39-, and 1.33-fold higher than those in the Jin₁₂ F₁ leaves, respectively, at each sampling time from 1 to 13 days after inoculation.

DISCUSSION

Previous studies demonstrated that disease resistance screening was important to get tolerant germplasm for breeding new cultivars to control powdery mildew in field and greenhouse-grown pumpkins (Luitel et al., 2016; Rabelo et al., 2017). Furthermore, the activation speeds and activity levels of defense enzymes vary in different plant genotypes or plant–pathogen interactions (Yan et al., 2009). Therefore, the changes in the levels of these enzymes could serve as valuable physiological indices for the selection of tolerant germplasms. In the present study, we evaluated the ability of two commercial pumpkin cultivars in resistance to *P. xanthii* infection. Our results demonstrate that the Sixing F₁ cultivar has a much higher ability in resistance to *P. xanthii* infection than the Jin₁₂ F₁ cultivar and can be considered as a tolerant variety. In addition, our results showed that the disease incidence and index were significantly higher than the Sixing F₁ cultivar at different time points after inoculation. The Jin₁₂ F₁ cultivar is a susceptible variety because of its high disease incidence and index.

Our comparative study of tolerant and susceptible cultivars provides a new insight for the mechanisms of different pumpkin cultivars in resistance to *P. xanthii* infection. The Sixing F₁ cultivar had less ROS accumulation, lower rates of lipid peroxidation, a higher level of lignin and total phenolics contents, higher *PAL*, *PPO* activity, and genes expression, and a higher expression of SA signaling pathway marker genes than the Jin₁₂ F₁ cultivar. In addition, a positive relationship was discovered between the high H₂O₂ and MDA contents and the disease incidence and index. Thus, the possible mechanism for the stronger resistance of the Sixing F₁ cultivar to *P. xanthii* infection may be through enhancing the activity and gene expression of the phenylpropanoids pathway and ROS scavenging and the



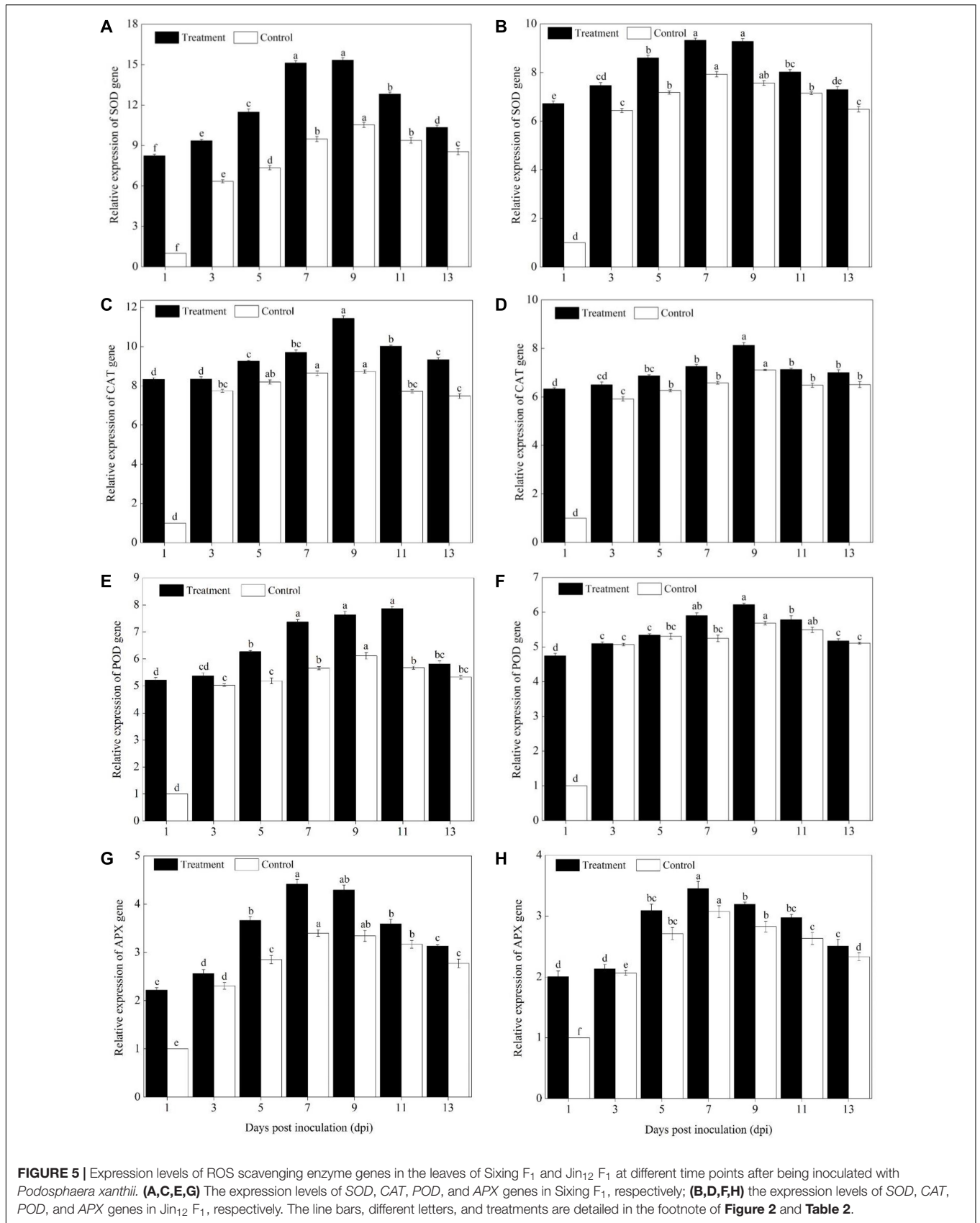


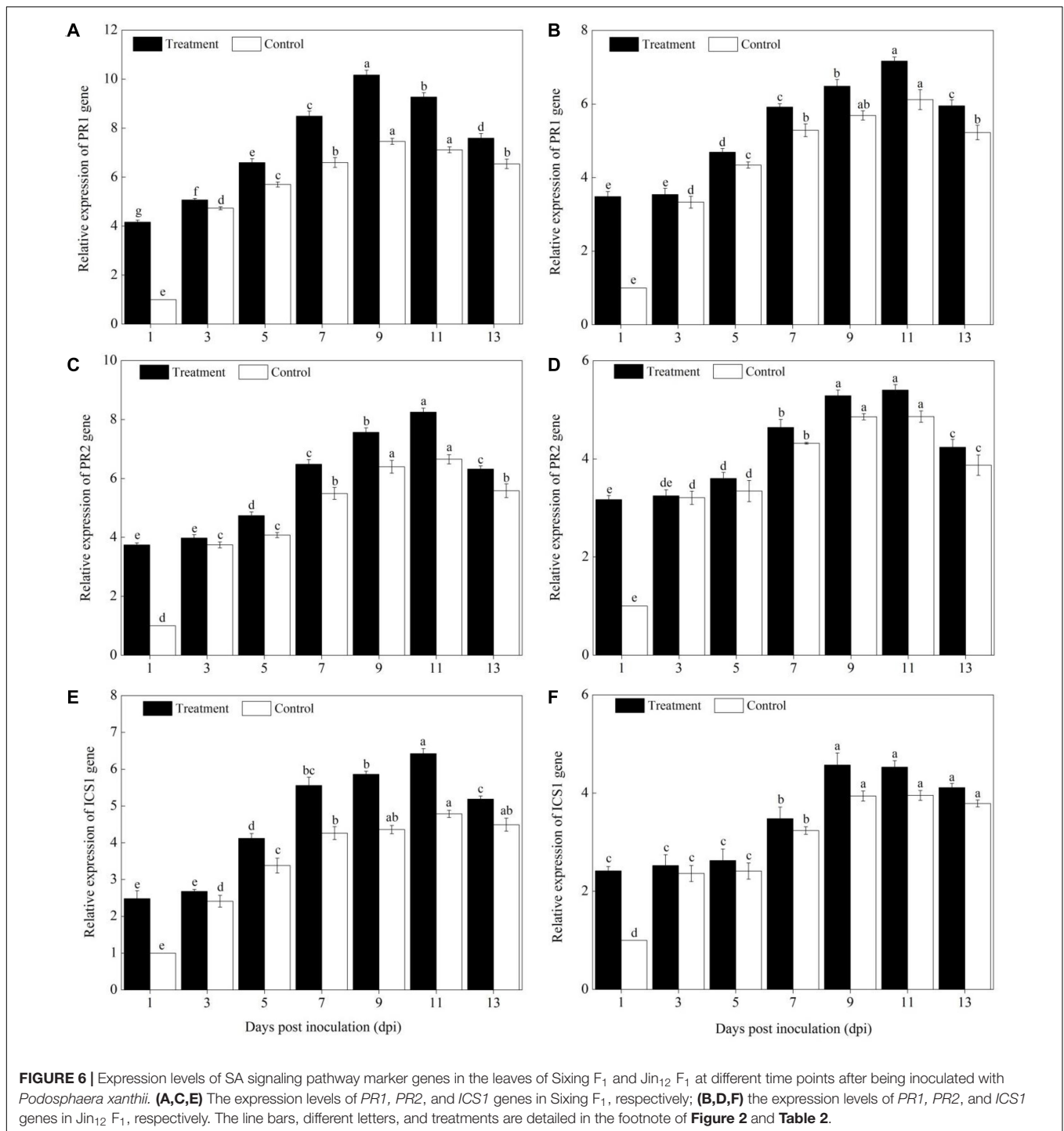
SA signaling pathway by increasing phenolic substances and lignin contents and reducing ROS accumulation. To the best of our knowledge, this is the first time that it was suggested that the pumpkin cultivars are resistant to *P. xanthii* infection through stimulating the phenylpropanoids and the SA pathway and antioxidative defense systems. These are also supported by previous studies.

Phenylpropanoid pathway defense enzymes (PAL, POX, and PPO) are known to be involved in plant disease resistance (Paparú et al., 2010; Babu et al., 2015; Jia et al., 2016) and closely related to plant resistance to *P. xanthii* of cucumber (Chen et al., 2014; Gao et al., 2019) and plant-induced systemic resistance (Mauch-mani and Slusarenko, 1996). Among all the phenylpropanoid pathway defense enzymes, PAL is the first enzyme that produces the precursors for lignin and phenolic secondary metabolites (Sticher et al., 1997). PPO is another key enzyme in the synthesis of phenolic compounds with antimicrobial activity (Babu et al., 2015; Jia et al., 2016; Niu et al., 2018). Muslim et al. (2019) revealed that the lignin deposition in cucumber plants can prevent the pathogen *Colletotrichum*

orbiculare infection, and also the level of total phenolics was increased in cucumber seedlings after being inoculated with the *P. xanthii* (Chen et al., 2014).

The ROS-scavenging defense enzymes play an essential role in adjusting the extent of oxidative damage (Gao et al., 2020). Our present study found that the expression levels of ROS scavenging defense enzymes and genes (*SOD*, *POD*, *CAT*, and *APX*) were significantly increased in the tolerant cultivar of Sixing F₁ after *P. xanthii* inoculation in agreement with the results of Wang et al. (2010) in the powdery mildew pathogen infested cucumber. H₂O₂ and MDA have been considered as the important types of ROS and key biochemical indicators of oxidative damage in plants against pathogen infection (Garcia-Limones et al., 2002; Mellersh et al., 2002; Gill and Tuteja, 2010; Mandal et al., 2011; Chavan et al., 2013). El-Komy (2014) demonstrated that the resistant cultivar faba bean (*Vicia faba*) showed less ROS accumulation, a lower rate of lipid peroxidation, and higher activity of the enzymatic ROS scavenging system compared with the susceptible cultivar during the interaction of *Botrytis fabae*. The ability of tomato





(*Lycopersicon esculentum* L.) in resistance to *Botrytis cinerea* infection resulted from the early induction of H_2O_2 (Patykowski and Urbanek, 2003). Meanwhile, the excess H_2O_2 can lead to the peroxidation of unsaturated lipids of membranes in plants (Apel and Hirt, 2004) and the increased contents of MDA in both the resistant and susceptible cultivars of the faba bean during the interaction between *B. fabae* and faba bean (El-Komy, 2014).

Previous studies demonstrated that plant hormones of SA act as an important signal molecule in plant resistance to pathogen infection (Vlot et al., 2009). Meanwhile, similar studies revealed that the isochorismate synthase (*ICS1/SID2*) gene plays the main role in SA accumulation, and *PR* gene acted as reliable markers of SA-mediated response or SAR as well as basal content maintenance under the normal condition (Hunt and Ryals, 1996; Garcion et al., 2008; Dempsey et al., 2011).

Li et al. (2019) discovered that the basal defense and SA-signaling-associated pathways play an important role in contributing to the postpenetration defense against tobacco powdery mildew (*Golovinomyces cichoracearum*) in *Arabidopsis* by comparative transcriptome analysis. Wu et al. (2019) found that *NPR1* and *ICS1/SID2* genes can activate the SA pathway of *Arabidopsis thaliana*, and the increased expression of SA pathway marker genes *PR2* and *PR5* in *A. thaliana* plays a positive role in defense against (hemi)-biotrophs after the cold treatment.

CONCLUSION

Our study suggests that the Sixing F₁ cultivar can be considered as a tolerant cultivar, and the Jin₁₂ F₁ cultivar can be considered as a susceptible cultivar. One possible mechanism to activate the defense system and to prevent the pathogen infection of the pumpkin cultivars in resistance to *P. xanthii* infection is through enhancing the activity and gene expression of the enzymes involved in the phenylpropanoids pathway to promote the synthesis of phenolic substances and lignin and in ROS scavenging to reduce the ROS accumulation and to balance the oxidative damage, and in the SA signaling pathway to activate plant resistance to pathogen infection. However, more research is needed to determine other defense genes in pumpkins that encode the pathogenesis-related proteins and plant hormones in resistance to *P. xanthii* infection in the future.

REFERENCES

- Abdel-Monaim, M., Abdel-Gaid, M., and Armanious, H. (2012). Effect of chemical inducers on root rot and wilt diseases, yield and quality of tomato. *Int. J. Agric. Sci.* 7, 211–220.
- Apel, K., and Hirt, H. (2004). Reactive oxygen species: metabolism, oxidative stress, and signal transduction. *Annu. Rev. Plant Biol.* 55, 373–399. doi: 10.1146/annurev.arplant.55.031903.141701
- Babosha, A. V., Ryabchenko, A. S., Avetisyan, G. A., and Avetisyan, T. V. (2020). Visualization of the halo region in plant-powdery mildew interactions by cryoscanning electron microscopy. *J. Plant Pathol.* 102, 103–111. doi: 10.1007/s42161-019-00387-3
- Babu, A. N., Jogaiah, S., Ito, S., and Nagaraj, A. K. (2015). Improvement of growth, fruit weight and early blight disease protection of tomato plants by rhizosphere bacteria is correlated with their beneficial traits and induced biosynthesis of antioxidant peroxidase and polyphenol oxidase. *Plant Sci.* 231, 62–73. doi: 10.1016/j.plantsci.2014.11.006
- Barickman, T. C., Horgan, T. E., and Wilson, J. C. (2017). Efficacy of fungicide applications and powdery mildew resistance in three pumpkin cultivars. *Crop Prot.* 101, 90–94. doi: 10.1016/j.cropro.2017.07.025
- Bezold, T. N., Mathews, D., Loy, J. B., and Minocha, S. C. (2005). Molecular analysis of the hull-less seed trait in pumpkin: expression profiles of genes related to seed coat development. *Seed Sci. Res.* 15, 205–217. doi: 10.1079/SSR2005211
- Cakmak, I., and Marschner, H. (1992). Magnesium deficiency and high light intensity enhance activities of superoxide dismutase, ascorbate peroxidase, and glutathione reductase in bean leaves. *Plant Physiol.* 98, 1222–1227. doi: 10.1104/pp.98.4.1222
- Chance, B., and Maehly, A. C. (1955). Assay of catalases and peroxidases. *Meth. Enzymol.* 2, 764–775. doi: 10.1016/S0076-6879(55)02300-8
- Chang, S., Tan, C., Frankel, E. N., and Barrett, D. M. (2000). Low-density lipoprotein antioxidant activity of phenolic compounds and polyphenol oxidase

DATA AVAILABILITY STATEMENT

All datasets generated for this study are included in the article/supplementary material, further inquiries can be directed to the corresponding author/s.

AUTHOR CONTRIBUTIONS

SZ conceived the experiments with the help of BX. SZ collected and prepared the fungus and pumpkin seedling samples, performed *Podosphaera xanthii* infections, extracted the total RNAs, and wrote the manuscript. JL and SZ performed RT-qPCR and analyzed the data. SZ and JZ interpreted the results. JZ made critical revising, editing, and proofreading. SZ and BX revised and approved the final manuscript. All authors contributed to the article and approved the submitted version.

FUNDING

This work was supported by the Scientific Research Start-up Funds for Openly-Recruited Doctors (Project 2017RCZX-07); the Fuxi Outstanding Talent Cultivation Program, Gansu Agricultural University (Project Gauxf-03J03); the Special Funds for Discipline Construction (Project GAU-XKJS-2018-156); and the National Natural Science Foundation of China (Project 31460526).

- activity in selected clingstone peach cultivars. *J. Agric. Food Chem.* 48, 147–151. doi: 10.1021/jf9904564
- Chavan, V., Bhargava, S., and Kamble, A. (2013). Temporal modulation of oxidant and antioxidative responses in *Brassica carinata* during β-aminobutyric acid-induced resistance against *Alternaria brassicae*. *Physiol. Mol. Plant Pathol.* 83, 35–39. doi: 10.1016/j.pmpp.2013.03.002
- Chen, J., Fernandez, D., Wang, D. D., Chen, Y. J., and Dai, G. H. (2014). Biological control mechanisms of D-pinitol against powdery mildew in cucumber. *Physiol. Mol. Plant Pathol.* 88, 52–60. doi: 10.1016/j.pmpp.2014.09.001
- Chen, Q. M., Yu, G. C., Wang, X. Y., Meng, X. N., and Lv, C. M. (2020). Genetics and resistance mechanism of the cucumber (*Cucumis sativus* L.) against powdery mildew. *J. Plant Growth Regul.* 4, 1–7. doi: 10.1007/s00344-020-10075-7
- Cohen, Y., Baider, A., Petrov, L., Sheck, L., and Voloisky, V. (2000). Cross-infectivity of *Sphaerotheca fuliginea* to watermelon, melon and cucumber. *Acta Hort.* 510, 85–88. doi: 10.17660/ActaHortic.2000.510.14
- Dangl, J., and Jones, J. D. G. (2001). Plant pathogens and integrated defense responses to pathogens. *Nature* 411, 826–834. doi: 10.1038/35081161
- Dempsey, D. A., Vlot, M. C. W., and Daniel, F. K. (2011). Salicylic acid biosynthesis and metabolism. *Arabidopsis Book/American Soc. Plant Biol.* 9:e0156. doi: 10.1199/tab.0156
- Dik, A. J., Verhaar, M. A., and Bélanger, R. R. (1998). Comparison of three biological control agents against cucumber powdery mildew (*Sphaerotheca fuliginea*) in semi-commercial scale glasshouse trials. *Eur. J. Plant Pathol.* 104, 413–423. doi: 10.1023/A:1008025416672
- Dong, X. (1998). SA, JA, ethylene, and disease resistance in plants. *Curr. Opin. Plant Biol.* 1, 316–323. doi: 10.1016/1369-5266(88)80053-0
- Edgar, C. I., McGrath, K. C., Dombrecht, B., Manners, J. M., Maclean, D. C., Schenk, P. M., et al. (2006). Salicylic acid mediates resistance to the vascular wilt pathogen *Fusarium oxysporum* in the model host *Arabidopsis thaliana*. *Australas. Plant Pathol.* 35, 581–591. doi: 10.1071/AP06060

- El-Alfy, A. T., and Schlenk, D. (2002). Effect of 17-beta-estradiol and testosterone on the expression of flavin-containing monooxygenase and the toxicity of aldicarb to Japanese medaka. *Oryzias latipes*. *Toxicol. Sci.* 68, 381–388. doi: 10.1093/toxsci/68.2.381
- El-Komy, M. H. (2014). Comparative analysis of defense responses in chocolate spot-resistant and susceptible faba bean (*Vicia faba*) cultivars following infection by the necrotrophic fungus *Botrytis fabae*. *Plant Pathol. J.* 30, 355–366. doi: 10.5423/PPJ.OA.06.2014.0050
- El-Naggar, M., El-Deeb, H., and Ragab, S. (2012). Applied approach for controlling powdery mildew disease of cucumber under plastic houses. *Pak. J. Agric. Agric. Eng. Vet. Sci. (Pakistan)* 28, 54–64.
- Eskandari, S., Khoshgoftarmanesh, A. H., and Sharifnabi, B. (2018). The effect of foliar-applied manganese in mineral and complex forms with amino acids on certain defense mechanisms of cucumber (*Cucumis sativus* L.) against powdery mildew. *J. Plant Growth Regul.* 37, 481–490. doi: 10.1007/s00344-017-9747-x
- Faostat (2010). *Agricultural Structure (production, price, value)*. Rome: Food and Agriculture Organization.
- Fu, Z. Q., Yan, S., Saleh, A., Wang, W., Ruble, J., Oka, N., et al. (2012). NPR3 and NPR4 are receptors for the immune signal salicylic acid in plants. *Nature* 486, 228–232. doi: 10.1038/nature11162
- Gao, S. H., Xu, X. W., Zhang, R. Y., Qi, X. H., Xu, Q., and Chen, X. H. (2019). Cloning of CsPAL gene and its expression analysis in response to powdery mildew infection. *Mol. Plant Breed.* 17, 1757–1762.
- Gao, Y. J., Fu, W. J., Liu, J., Chen, Y. J., and Dai, G. H. (2020). Morphological changes of *Podosphaera xanthii* and induced biochemical defenses of cucumber after treated by (+)-(S)-ar-turmerone. *Physiol. Mol. Plant* 112:101524. doi: 10.1016/j.pmp.2020.101524
- Garcia-Limones, C., Hervas, A., Navas-Cortes, J. A., Jimenez-Diaz, R. M., and Tena, M. M. (2002). Induction of an antioxidant enzyme system and other oxidative stress markers associated with compatible and incompatible interactions between chickpea (*Cicer arietinum* L.) and *Fusarium oxysporum* f. sp. *ciceris*. *Physiol. Mol. Plant Pathol.* 61, 325–337. doi: 10.1006/pmp.2003.0445
- Garcion, C., Lohmann, A., Lamodièrè, E., Catinot, J., Buchala, A., Doermann, P., et al. (2008). Characterization and biological function of the isochorismate synthase 2 gene of *Arabidopsis*. *Plant Physiol.* 147, 1279–1287. doi: 10.1104/pp.108.119420
- Giannopolitis, C. N., and Ries, S. K. (1977). Superoxide dismutases: I. occurrence in higher plants. *Plant Physiol.* 59, 309–314. doi: 10.1104/pp.59.2.309
- Gill, S. S., and Tuteja, N. (2010). Reactive oxygen species and antioxidant machinery in abiotic stress tolerance in crop plants. *Plant Physiol. Biochem.* 48, 909–930. doi: 10.1016/j.plaphy.2010.08.016
- Hafez, Y. M., El-Nagar, A. S., Elzaawely, A. A., Kamel, S., and Maswada, H. F. (2018). Biological control of *Podosphaera xanthii* the causal agent of squash powdery mildew disease by upregulation of defense-related enzymes. *Egyptian J. Biol. Pest Cont.* 28:57. doi: 10.1186/s41938-018-0058-8
- Han, C., Li, J., Jin, P., Li, X., Wang, L., and Zheng, Y. (2017). The effect of temperature on phenolic content in wounded carrots. *Food Chem.* 215, 116–123. doi: 10.1016/j.foodchem.2016.07.172
- Hodges, D. M., DeLong, J. M., Forney, C. F., and Prange, R. K. (1999). Improving the thiobarbituric acid-reactive-substances assay for estimating lipid peroxidation in plant tissues containing anthocyanin and other interfering compounds. *Planta* 207, 604–611. doi: 10.1007/s004250050524
- Hou, L., Wang, L. N., Wu, X. L., Gao, W., Zhang, J. X., and Huang, C. Y. (2019). Expression patterns of two pal genes of *Pleurotus ostreatus* across developmental stages and under heat stress. *BMC Microbiol.* 19:231. doi: 10.1186/s12866-019-1594-4
- Hu, Z. H., Zhang, W., Shen, Y. B., Fu, H. J., Su, X. H., and Zhang, Z. Y. (2009). Activities of lipoxygenase and phenylalanine ammonia lyase in poplar leaves induced by insect herbivory and volatiles. *J. For. Res.* 20, 372–376. doi: 10.1007/s11676-009-0063-6
- Hunt, M. D., and Ryals, J. A. (1996). Systemic acquired resistance signal transduction. *Crit. Rev. Plant Sci.* 15, 583–606. doi: 10.1080/07352689609382371
- Iiyama, K., and Wallis, A. F. A. (1990). Determination of lignin in herbaceous plants by an improved acetyl bromide procedure. *J. Sci. Food Agric.* 51, 145–161. doi: 10.1002/jsfa.2740510202
- Irisarri, P., Zhebentyayeva, T., Errea, P., and Pina, A. (2016). Differential expression of phenylalanine ammonia lyase (PAL) genes implies distinct roles in development of graft incompatibility symptoms in *Prunus*. *Sci. Hortic.* 204, 16–24. doi: 10.1016/j.scienta.2016.03.025
- Jia, H. F., Zhao, P. C., Wang, B. J., Tariq, P., Zhao, F. G., Zhao, M. Z., et al. (2016). Overexpression of polyphenol oxidase gene in strawberry fruit delays the fungus infection process. *Plant Mol. Biol. Rep.* 34, 592–606. doi: 10.1007/s11105-015-0946-y
- Kamalipourazad, M., Sharifi, M., Maivan, H. Z., Behmanesh, M., and Chashmi, N. A. (2016). Induction of aromatic amino acids and phenylpropanoid compounds in *Scrophularia striata* Boiss. cell culture in response to chitosan-induced oxidative stress. *Plant Physiol. Biochem.* 107, 374–384. doi: 10.1016/j.plaphy.2016.06.034
- Kusch, S., and Panstruga, R. (2017). Mlo-based resistance: an apparently universal “weapon” to defeat powdery mildew disease. *Mol. Plant-Microbe Interact.* 30, 179–189. doi: 10.1094/MPMI-12-16-0255-CR
- Li, R., Zhang, L. L., Yang, X. M., Cao, X. L., Wang, Y. G., Ma, X. F., et al. (2019). Transcriptome analysis reveals pathways facilitating the growth of tobacco powdery mildew in *Arabidopsis*. *Phytopathol. Res.* 1:7. doi: 10.1186/s42483-019-0012-z
- Liu, J. T., Wang, B., Li, Y. P., Huang, L. F., Zhang, Q. R., Zhu, H. S., et al. (2020). RNA sequencing analysis of low temperature and low light intensity responsive transcriptomes of zucchini (*Cucurbita pepo* L.). *Sci. Hortic.* 265:109263. doi: 10.1016/j.scienta.2020.109263
- Liu, X. B., Zhang, J. H., and Cui, C. S. (2006). Identification of pathogen and evaluation the resistance to pumpkin powdery mildew in heilongjiang province. *China Cucurb. Veget.* 1, 10–13.
- Livak, K. J., and Schmittgen, T. D. (2001). Analysis of relative gene expression data using real-time quantitative PCR and the 2^{-ΔΔCt} method. *Methods* 25, 402–408. doi: 10.1006/meth.2001.1262
- Luan, Q., Chen, C., Liu, M., Li, Q., Wang, L., and Ren, Z. (2019). CsWRKY50 mediates defense responses to *Pseudoperonospora cubensis* infection in *Cucumis sativus*. *Plant Sci.* 279, 59–69. doi: 10.1016/j.plantsci.2018.11.002
- Luitel, B. P., Kim, S. G., Sung, J. S., Hur, O. S., Mun, S. Y., Rhee, J. H., et al. (2016). Screening of pumpkin (*Cucurbita* spp.) germplasm for resistance to powdery mildew at various stages of seedlings growth. *Res. Plant Dis.* 22, 133–144. doi: 10.5423/RPD.2016.22.3.133
- Mandal, S., Das, R. K., and Mishra, S. (2011). Differential occurrence of oxidative burst and antioxidative mechanism in compatible and incompatible interactions of *Solanum lycopersicum* and *Ralstonia solanacearum*. *Plant Physiol. Biochem.* 49, 117–123. doi: 10.1016/j.plaphy.2010.10.006
- Mauch-mani, B., and Slusarenko, A. J. (1996). Production of salicylic acid precursors is a major function of phenylalanine ammonia-lyase in the resistance of *Arabidopsis* to *Peronospora parasitica*. *Plant Cell* 8, 203–212. doi: 10.2307/3870265
- McGrath, M. T., and Thomas, C. E. (1996). “Powdery mildew,” in *Compendium of Cucurbit Diseases*, eds T. Zitter, A. D. L. Hopkins, and C. E. Thomas (St. Paul, MN: APS Press), 28–30.
- Mellersh, D. G., Foulds, I. V., Higgins, V. J., and Heath, M. C. (2002). H₂O₂ plays different roles in determining penetration failure in three diverse plant-fungal interactions. *Plant J.* 29, 257–268. doi: 10.1046/j.0960-7412.2001.01215.x
- Morishita, M., Sugiyama, K., Saito, T., and Sakata, Y. (2003). Powdery mildew resistance in cucumber. *Japan Agr. Res. Q.* 37, 7–14. doi: 10.6090/jarq.37.7
- Muslim, A., Hyakumachi, M., Kageyama, K., and Suwandi, S. (2019). Induction of systemic resistance in cucumber by hypovirulent binucleate *Rhizoctonia* against anthracnose caused by *Colletotrichum orbiculare*. *Trop. Life Sci. Res.* 30, 109–122. doi: 10.21315/tlsr2019.30.1.7
- Nakano, Y., and Asada, K. (1981). Hydrogen peroxide is scavenged by ascorbate-specific peroxidase in spinach chloroplasts. *Plant and Cell Physiol.* 22, 867–880.
- Niu, J. H., Cao, Y., Lin, X. G., Leng, Q. Y., Chen, Y. M., and Yin, J. M. (2018). Field and laboratory screening of anthurium cultivars for resistance to foliar bacterial blight and the induced activities of defence-related enzymes. *Folia Hort.* 30, 129–137. doi: 10.2478/fhort-2018-0013
- Paparu, P., Dubois, T., Coyne, D., and Viljoen, A. (2010). Effect of *Fusarium oxysporum* endophyte inoculation on the activities of phenylpropanoid pathway enzymes and *Radopholus similis* numbers in susceptible and tolerant

- East African Highland bananas. *Nematology* 12, 469–480. doi: 10.1163/138855409X12571623969646
- Patra, H. K., Kar, M., and Mishra, D. (1978). Catalase activity in leaves and cotyledons during plant development and senescence. *Biochem. Physiol. Pflanzen* 172, 385–390. doi: 10.1016/S0015-3796(17)30412-2
- Patykowski, J., and Urbanek, H. (2003). Activity of enzymes related to H₂O₂ generation and metabolism in leaf apoplastic fraction of tomato leaves infected with *Botrytis cinerea*. *J. Phytopathol.* 151, 153–161. doi: 10.1046/j.1439-0434.2003.00697.x
- Rabelo, H. O., Santos, L. S., Diniz, G. M. M., Marin, M. V., Braz, L. T., et al. (2017). Cucurbits powdery mildew race identity and reaction of melon genotypes. *Pesqui. Agropecu. Trop.* 47, 440–447. doi: 10.1590/1983-40632017v4749537
- Ruiz, J. M., Garcia, P. C., Rivero, R. M., and Romero, L. (1999). Response of phenolic metabolism to the application of carbendazim plus boron in tobacco. *Physiol. Plant* 106, 151–157. doi: 10.1034/j.1399-3054.1999.106201.x
- Shi, Z. Q., Wang, F., Zhou, W., Zhang, P., and Fan, Y. J. (2007). Application of osthol induces a resistance response against powdery mildew in pumpkin leaves. *Int. J. Mol. Sci.* 8, 1001–1012. doi: 10.3390/i8091001
- Shin, H. D. (2000). *Erysiphaceae of Korea*. Suwon: National Institute of Agricultural Science and Technology, 227–235.
- Singleton, V. L., and Rossi, J. A. (1965). Colorimetry of total phenolics with phosphomolybdic phosphotungstic acid reagents. *Am. J. Enol. Vitic.* 16, 144–158.
- Smith, P. G. (1948). Powdery mildew resistance in cucumber. *Phytopathology* 38, 1027–1028.
- Sticher, L., Mauch-Mani, B., and Metraux, J. P. (1997). Systemic acquired resistance. *Annu. Rev. Phytopathol.* 35, 235–270. doi: 10.1146/annurev.phyto.35.1.235
- Tanaka, K., Fukuda, M., and Amaki, Y. (2017). Importance of prumycin produced by *Bacillus amyloliquefaciens* SD-32 in biocontrol against cucumber powdery mildew disease. *Pest Manag. Sci.* 73, 2419–2428. doi: 10.1002/ps.4630
- Tian, X. Y., He, M. R., Wang, Z. L., Zhang, J. W., Song, Y. L., He, Z. L., et al. (2015). Application of nitric oxide and calcium nitrate enhances tolerance of wheat seedlings to salt stress. *Plant Growth Regul.* 77, 343–356. doi: 10.1007/s10725-015-0069-3
- Vlot, A. C., Dempsey, D. A., and Klessig, D. F. (2009). Salicylic acid, a multifaceted hormone to combat disease. *Annu. Rev. Phytopathol.* 47, 177–206. doi: 10.1146/annurev.phyto.050908.135202
- Vlot, A. C., Klessig, D. F., and Park, S. W. (2008). Systemic acquired resistance: the elusive signal(s). *Curr. Opin. Plant Biol.* 11, 436–442. doi: 10.1016/j.pbi.2008.05.003
- Vogt, T. (2010). Phenylpropanoid biosynthesis. *Mol. Plant* 3, 2–20. doi: 10.1093/mp/spp106
- Wang, H., Jiang, Y. P., Yu, H. J., Xia, X. J., Shi, K., Zhou, Y. H., et al. (2010). Light quality affects incidence of powdery mildew, expression of defence-related genes and associated metabolism in cucumber plants. *Eur. J. Plant Pathol.* 127, 125–135. doi: 10.1007/s10658-009-9577-1
- Wang, X. H., Gong, M., Tang, L., Zheng, S., Lou, J. D., Ou, L., et al. (2013). Cloning, bioinformatics and the enzyme activity analyses of a phenylalanine ammonia-lyase gene involved in dragon's blood biosynthesis in *Dracaena cambodiana*. *Mol. Biol. Rep.* 40, 97–107. doi: 10.1007/s11033-012-2032-y
- Willekens, H., Chamnongpol, S., Davey, M., Schraudner, M., Langebartels, C., VanMontagu, M., et al. (1997). Catalase is a sink for H₂O₂ and is indispensable for stress defence in C-3 plants. *EMBO J.* 16, 4806–4816. doi: 10.1093/emboj/16.16.4806
- Wu, Z. J., Han, S. M., Zhou, H. D., Tuang, Z. K., Wang, Y. Z., Jin, Y., et al. (2019). Cold stress activates disease resistance in *Arabidopsis thaliana* through a salicylic acid dependent pathway. *Plant Cell Environ.* 42, 2645–2663. doi: 10.1111/pce.13579
- Yan, H. X., Xu, B. L., Liang, Q. L., Xue, Y. Y., Chen, R. X., and Liang, Z. F. (2009). Effects of chlorophyll content and stoma density on pumpkin resistance to powdery mildew. *Plant Prot.* 35, 79–81.
- Yan, Y. (2018). *Functional Analysis of Low Temperature Tolerance Conferred by the GPA1-Encoded G Protein Subunit in Cucumis Sativus*. Ph.D. thesis, China Agricultural University: Beijing
- Yao, W. S., Xu, T. T., Farooq, S. U., Jin, P., and Zheng, Y. H. (2018). Glycine betaine treatment alleviates chilling injury in zucchini fruit (*Cucurbita pepo* L.) by modulating antioxidant enzymes and membrane fatty acid metabolism. *Postharvest Biol. Tech.* 144, 20–28. doi: 10.1016/j.postharvbio.2018.05.007
- Zhang, S. W., Gan, Y. T., and Xu, B. L. (2016). Application of plant-growth-promoting fungi *Trichoderma longibrachiatum* T6 enhances tolerance of wheat to salt stress through improvement of antioxidative defense system and gene expression. *Front. Plant Sci.* 7:1405. doi: 10.3389/fpls.2016.01405
- Zhu, H. S., Kang, J., Liu, J. T., Chen, M. D., Li, Y. P., Wang, B., et al. (2018). Cloning and expression analysis of polyphenol oxidase PPO gene family from *Luffa cylindrical*. *J. Nucl. Agr. Sci.* 32, 1502–1512.

Conflict of Interest: The authors declare that the research was conducted in the absence of any commercial or financial relationships that could be construed as a potential conflict of interest.

Copyright © 2021 Zhang, Liu, Xu and Zhou. This is an open-access article distributed under the terms of the Creative Commons Attribution License (CC BY). The use, distribution or reproduction in other forums is permitted, provided the original author(s) and the copyright owner(s) are credited and that the original publication in this journal is cited, in accordance with accepted academic practice. No use, distribution or reproduction is permitted which does not comply with these terms.