



# Responses of Leaf Anatomy and CO<sub>2</sub> Concentrating Mechanisms of the Aquatic Plant *Ottelia cordata* to Variable CO<sub>2</sub>

Wenmin Huang<sup>1,2†</sup>, Shijuan Han<sup>1,3†</sup>, Zhenfei Xing<sup>4</sup> and Wei Li<sup>1\*</sup>

<sup>1</sup> Key Laboratory of Aquatic Botany and Watershed Ecology, Wuhan Botanical Garden, Center of Plant Ecology, Core Botanical Gardens, Chinese Academy of Sciences, Wuhan, China, <sup>2</sup> Aix Marseille Univ CNRS, BIP UMR 7281, IMM, FR 3479, Marseille, France, <sup>3</sup> University of Chinese Academy of Sciences, Beijing, China, <sup>4</sup> Institute of Hydrobiology, Chinese Academy of Sciences, Wuhan, China

## OPEN ACCESS

### Edited by:

Reimund Goss,  
Leipzig University, Germany

### Reviewed by:

Matheus Bianconi,  
The University of Sheffield,  
United Kingdom  
Roxana Khoshhravesh,  
University of New Mexico,  
United States

### \*Correspondence:

Wei Li  
livei@wbcas.cn

<sup>†</sup>These authors have contributed  
equally to this work

### Specialty section:

This article was submitted to  
Marine and Freshwater Plants,  
a section of the journal  
Frontiers in Plant Science

**Received:** 04 May 2020

**Accepted:** 31 July 2020

**Published:** 14 August 2020

### Citation:

Huang W, Han S, Xing Z and Li W  
(2020) Responses of Leaf  
Anatomy and CO<sub>2</sub> Concentrating  
Mechanisms of the Aquatic Plant  
*Ottelia cordata* to Variable CO<sub>2</sub>.  
*Front. Plant Sci.* 11:1261.  
doi: 10.3389/fpls.2020.01261

Acclimation to variable CO<sub>2</sub> was studied in floating leaves of the freshwater monocot *Ottelia cordata* grown in either low or high CO<sub>2</sub>. The most striking anatomical variations responding to high CO<sub>2</sub> included the enlarged upper epidermal cells and the decreased area of epidermal chloroplasts. Stomata that distributed on the upper surface, and the stomatic chamber area, showed no significant response to high CO<sub>2</sub>. pH-drift experiments indicated that floating leaves of *O. cordata* were able to use bicarbonate regardless of CO<sub>2</sub> concentrations. Photosynthetic enzyme activities and patterns of organic acids fluctuation confirmed that floating leaves of *O. cordata* can operate CAM only at low CO<sub>2</sub>, and perform C<sub>4</sub>-like metabolism at both high and low CO<sub>2</sub>. Overall, the present results imply that the floating leaves of *O. cordata* does not just rely on the atmospheric CO<sub>2</sub> for its inorganic carbon, but is also dependent on CO<sub>2</sub> and bicarbonate in the water. By showing these effects of CO<sub>2</sub> variation, we highlight the need for further experimental studies on the regulatory mechanisms in *O. cordata* floating leaves, that prevent futile cycling among the three CO<sub>2</sub> concentrating mechanisms (bicarbonate use, C<sub>4</sub>, and CAM metabolism) and the strategy for exploiting atmospheric CO<sub>2</sub>, as well as studies on the detailed biochemical pathway for C<sub>4</sub> and CAM metabolism in this species.

**Keywords:** CO<sub>2</sub> availability, C<sub>4</sub>, crassulacean acid metabolism, bicarbonate use, CO<sub>2</sub> concentrating mechanisms, organic acids

## INTRODUCTION

Since preindustrial times, the atmospheric CO<sub>2</sub> concentration has increased from ~280 ppm to currently over 400 ppm and is predicted to reach 800 ppm by the year 2100 (IPCC, 2014). The increasing concentration of atmospheric CO<sub>2</sub> might influence plant traits, such as growth, photosynthesis, as well as the morphology and anatomy of leaves (Long et al., 2004). The responses of terrestrial plants to increasing atmospheric CO<sub>2</sub> have been studied extensively (e.g. Long et al., 2004; Ainsworth and Long, 2005), however, studies on aquatic plants are sparse and mainly focus on marine species (Johnson et al., 2013; Koch et al., 2013). The effects of increasing

atmospheric CO<sub>2</sub> on freshwater macrophytes appear to be more intricate and might be species- and water body- specific (Hussner et al., 2019). Increasing the atmospheric CO<sub>2</sub> will increase the availability of dissolved inorganic carbon (DIC) and decrease the pH in some aquatic ecosystems; this will also increase the proportion of CO<sub>2</sub> and HCO<sub>3</sub><sup>-</sup> within the pool of DIC, within a given pH range (Pedersen et al., 2013). Nevertheless, in some cases such as the productive lakes, the aquatic ecosystems are pulled out of the air-equilibrium either by rapid photosynthesis that decrease CO<sub>2</sub> concentrations or rapid decomposition of litter in the sediment that increase CO<sub>2</sub> concentrations in the water. This can generate diel changes in CO<sub>2</sub> concentrations of over 100-fold as well as the seasonal changes (Maberly, 1996; Schippers et al., 2004). Generally, photosynthesis in submerged aquatic plants is more sensitive and responsive to increasing CO<sub>2</sub> than HCO<sub>3</sub><sup>-</sup> (Maberly and Madsen, 1998).

As to photosynthesis in submerged aquatic plants, CO<sub>2</sub> is the preferred form of carbon and a number of species could only use CO<sub>2</sub>. However, about 50% of tested species have evolved strategies to use HCO<sub>3</sub><sup>-</sup> to handle CO<sub>2</sub> limitation (Iversen et al., 2019). The problem of limited inorganic carbon supply is caused by several factors (Maberly and Gontero, 2017): (1) the CO<sub>2</sub> diffusion rate in water is ~10 000 times lower than in air, which hinder the CO<sub>2</sub> transport into freshwater plants through the boundary layer; (2) when the requirement for inorganic carbon by photosynthesis exceeds the supply from the environment, especially in productive systems, the CO<sub>2</sub> can be depleted and its concentration close to zero. Thus, in addition to HCO<sub>3</sub><sup>-</sup> use, freshwater plants have evolved a diversity of CO<sub>2</sub> concentrating mechanisms (CCMs) to increase further the efficiency of carbon utilization. Although much less widespread than HCO<sub>3</sub><sup>-</sup> use, some freshwater macrophytes possess a type of C<sub>4</sub> (Bowes, 2011) or crassulacean acid metabolism (CAM)-like metabolism (Keeley, 1998). Both C<sub>4</sub> and CAM implement primary carbon fixation *via* the enzyme phosphoenolpyruvate carboxylase (PEPC), that is active during either day for C<sub>4</sub> or during night for CAM. Unlike terrestrial C<sub>4</sub> plants, in aquatic species, C<sub>4</sub> metabolism can be induced under the limitation of inorganic carbon, or be constitutive independent of the CO<sub>2</sub> concentration (Maberly and Gontero, 2017). The frequency of aquatic species with CAM is ~9% (Maberly and Gontero, 2018), and the utilization of CO<sub>2</sub> can occur during daytime, allowing the freshwater CAM plants to assimilate CO<sub>2</sub> continuously (Keeley, 1998; Madsen et al., 2002), which differs from the terrestrial CAM plants. CAM metabolism is a plastic process in freshwater plants (Bowes and Salvucci, 1989), and CO<sub>2</sub> concentration can affect its activity (Klavnsen and Maberly, 2010; Zhang et al., 2014). Except the amelioration strategies described above, exploitation strategies are another diversity of strategies to minimize the carbon constraint in aquatic plants that involve morphological and anatomical features to give access to higher availability of free CO<sub>2</sub> from the sediment or the atmosphere (Klavnsen et al., 2011; Maberly and Gontero, 2018). Floating and aerial leaves of some amphibious species are the examples with exploitation strategies that could exploit more CO<sub>2</sub> from the atmosphere (Sand-Jensen et al., 1992; Sand-Jensen

and Frost-Christensen, 1998). The compilation of CCMs in aquatic macrophytes showed that less than 25% species with an ability to use HCO<sub>3</sub><sup>-</sup> have alternative strategies, which mainly comprise C<sub>4</sub> and access to atmospheric CO<sub>2</sub>; nevertheless, CAM and C<sub>4</sub> do not usually coexist in one species (Maberly and Madsen, 2002; Maberly and Gontero, 2017). The submerged freshwater plant, *Ottelia alismoides*, is hitherto the only known species to operate three CCMs (HCO<sub>3</sub><sup>-</sup> use, C<sub>4</sub> and CAM metabolism) in the same tissue (Zhang et al., 2014; Shao et al., 2017).

In addition to the responses of CCMs to variable CO<sub>2</sub> availability, the size and anatomical structure of plant leaves are also influenced by CO<sub>2</sub> concentration (Radoglou and Jarvis, 1990). Enhanced CO<sub>2</sub> generally increases the size of terrestrial plants (Pritchard et al., 1999). In *Brassica juncea*, high CO<sub>2</sub> increased the thickness of the upper and lower epidermis, as well as the mesophyll cells of leaves (Uprety et al., 2001). While, in sorghum, the increase in growth CO<sub>2</sub> resulted in a marked decrease in the thickness of the bundle sheath (Watling et al., 2000). In *O. alismoides*, high CO<sub>2</sub> increased the thicknesses of the epidermal layers, the air space and mesophyll cells (Han et al., 2020). To our knowledge, there is little information in the literature concerning the effects of varying CO<sub>2</sub> availability on leaf structure and the relationships between structure and function in aquatic plants.

*Ottelia cordata* (Wallich) Dandy, a member of the Hydrocharitaceae, is an aquatic macrophyte distributed in China, Cambodia, Myanmar and Thailand (Wang et al., 2019; Li et al., 2020). It is a perennial and heterophyllous plant with linear or lanceolate submerged leaves and ovate-cordate floating leaves. Cultivation experiments showed that during its early growth phases, *O. cordata* is totally submerged and it only grows submerged leaves in the first year; at the second year and after, it only grows floating leaves, which is the only part of the plant that comes into contact with air (He and Sun, 1990). It was shown recently that *O. cordata* floating leaf is a HCO<sub>3</sub><sup>-</sup> user and perhaps operate CAM (Cao et al., 2019). The aim here was to quantify the extent of plasticity of CCMs and leaf anatomy in this species, in response to varying CO<sub>2</sub> availability in the water, to evaluate further possible effects of CO<sub>2</sub> enrichment on this species.

## MATERIALS AND METHODS

### Plant Material

Healthy *O. cordata* plants were collected randomly from a wild population at Haikou, Hainan Province, China. After collection, in order to eliminate the differences caused by environmental heterogeneity, the plants were cultured in plastic pots with aseptic soil and filled with water, and were illuminated with FSL T5/865 28 W fluorescence tubes in a growth room located in Wuhan Botanical Garden, with ambient temperature (13°C~17°C) and ~130 μmol photon m<sup>-2</sup> s<sup>-1</sup> (Li-Cor underwater sensor, UWQ, connected to a Li-Cor LI-1400 data logger) at the water surface, with a 14-h light (08:00–22:00)/10-h dark photoperiod. The light intensity condition

was chosen as a trade-off between having sufficient light for photosynthesis to avoid the effects induced by low light levels on anatomy and photosynthetic physiology, and not so much light to avoid causing photodamage when at low CO<sub>2</sub> concentrations. The water depth was maintained at ~30 cm during the acclimation. The transplanted plants were cultured for 3~4 weeks before they were used in the experiments.

## Response of *O. cordata* Floating Leaves to Different CO<sub>2</sub> Concentrations

In the different CO<sub>2</sub> acclimated experiments, the pots of *O. cordata* plants were put into the white plastic tanks (65 cm × 45 cm × 35 cm) containing tap water and incubated at two CO<sub>2</sub> concentrations as described previously (Huang et al., 2018). In the high CO<sub>2</sub> treatment (HC), the target pH of 7.0 was maintained between 6.52 and 7.06 by bubbling the medium with pure CO<sub>2</sub> under the control of a microcomputer pH controller (model 6311, Jenco Instruments, USA), producing CO<sub>2</sub> concentrations between 380~1603 μM with a mean of 941 μM. A low CO<sub>2</sub> (LC) concentration was produced by the natural photosynthesis of the plants which depleted the inorganic carbon of the water, and increased pH from 8.09 to 8.91, with a CO<sub>2</sub> concentration range of 3~28 μM and a mean of 15 μM. The acclimation of different CO<sub>2</sub> with four replicate pots per treatment, lasted four weeks in the growth room. Over the whole period of acclimation, alkalinity, pH and temperature were measured to calculate the CO<sub>2</sub> concentration using the equations reported in Maberly (1996). More information of the conditions in the treatments is shown in **Table 1**. Following the different CO<sub>2</sub> acclimation, there were newly floating leaves emerged, which were harvested for anatomical structure observation and physiological parameters measurement.

## Leaf Anatomy Observation by Light Microscopy and Transmission Electron Microscopy

The youngest fully developed floating leaves in both CO<sub>2</sub> treatments were sampled at 19:00 and were completed within half an hour. Then the leaves were sliced into 3 mm × 3 mm leaf fragments along the midrib. The segments were fixed immediately in 2.5% glutaraldehyde (pH 7.4) at 4°C overnight and then post-fixed in 1% OsO<sub>4</sub> at 4°C for 2.5 h. The semithin sections and ultrathin sections of the leaf samples were obtained according to the method of Han et al. (2020). Semithin sections were stained with methylene blue and observed using a digital light microscope (Motic BA310). Quantitative characteristics of leaf structures including the area and size of the epidermal and

mesophyll cells, as well as the air space and stomatic chamber, were measured using the Motic Images Plus 2.0 ML software. Ultrathin sections were examined and photographed under a TEM (HT7700, Hitachi, Japan). The area and size of chloroplasts and starch grains in the electron micrographs were measured with ImageJ software. At least 10 epidermal/mesophyll cells from both the upper and lower surfaces were measured per leaf from the digitized images.

## pH-Drift Experiments and Drift Parameters

The ability of *O. cordata* floating leaves to use HCO<sub>3</sub><sup>-</sup> was assessed in pH-drift experiments (Maberly and Spence, 1983). About 0.2~0.3 g fresh weight (FW) of leaves collected from different CO<sub>2</sub> acclimated plants, rinsed in clean tap water and then incubated in 70-ml test bottles with 50 ml of test solution (equimolar concentrations of NaHCO<sub>3</sub> and KHCO<sub>3</sub> at an overall concentration of 1 mM). The bottles with plant leaves were sealed with glass stoppers and incubated in a growth room at 25°C and ~130 μmol photon m<sup>-2</sup> s<sup>-1</sup> PAR. After ~24 h continuous irradiance, the final pH of the medium was measured with pH electrode (model IP-600-9 Jenco Instruments, USA) connected to a microcomputer pH controller. The final alkalinity of the solution was measured by Gran titration (Zhang et al., 2014). The total Ci remaining at the end of pH-drift, which represents the dissolved inorganic carbon comprising free CO<sub>2</sub>, HCO<sub>3</sub><sup>-</sup> and CO<sub>3</sub><sup>2-</sup>, was designated as C<sub>T</sub>. The concentration of C<sub>T</sub>, CO<sub>2</sub> and HCO<sub>3</sub><sup>-</sup> in the solution were calculated from the alkalinity, temperature and pH (Maberly, 1996). The quotient of C<sub>T</sub>/alkalinity reflects the ability of *O. cordata* floating leaves to deplete inorganic carbon (Maberly and Spence, 1983).

## Photosynthetic Enzyme Activity Measurement

Floating leaves were harvested at 21:00 h (dusk) before the lights turn off and at 07:00 h (dawn) before the lights turn on and immediately frozen in liquid nitrogen for further measurement of photosynthetic enzyme activity. The activity of ribulose 1,5-bisphosphate carboxylase-oxygenase (Rubisco), phosphoenol pyruvate carboxylase (PEPC), pyruvate phosphate dikinase (PPDK) and NADP-malic enzyme (NADP-ME), were determined according to the methods described in Zhang et al. (2014), and were assessed from the rates of NADH disappearance or appearance at 340 nm and 25°C, using a microplate reader (Tecan M200 PRO, Austria).

## CAM Activity and Organic Acids Content

Fresh *O. cordata* floating leaves (0.2~0.5 g), were collected at 21:00 h (dusk) and 07:00 h (dawn) and immediately frozen in liquid nitrogen for further measurement of acidity and organic acids. The acidity was measured according to the method of Zhang et al. (2014).

The organic acids in *O. cordata* floating leaves were extracted and detected based on the methods described previously (Pedersen et al., 2011). About 0.2 g frozen leaves were ground and extracted with ice-cold 5% (v/v) perchloric acid using a mortar and pestle. The homogenized samples were centrifuged at 8,000g for 10 min, the supernatant was collected and the

**TABLE 1** | Conditions in the low and high CO<sub>2</sub> treatments.

Conditions	Low CO <sub>2</sub>	High CO <sub>2</sub>
Temperature (°C)	14.7 ± 1.4 (12.6~16.9)	14.7 ± 1.4 (12.6~16.9)
pH <sup>#</sup>	8.41 ± 0.37 (8.09~8.91)	6.83 ± 0.17 (6.52~7.06)
Alkalinity (mequiv L <sup>-1</sup> )	1.61 ± 0.16 (1.48~1.83)	2.37 ± 0.14 (2.12~2.60)
CO <sub>2</sub> (μM)	15 ± 10 (3~28)	941 ± 613 (380~1603)
HCO <sub>3</sub> <sup>-</sup> (mM)	1.51 ± 0.17 (1.30~1.79)	2.36 ± 0.28 (2.12~2.60)

Mean values are given with s.d. and ranges are in parentheses. <sup>#</sup> calculated as a geometric mean.

procedure was repeated once with ice-cold 5% perchloric acid. The supernatants were mixed and adjusted to pH 3.0~3.5 using saturated K<sub>2</sub>CO<sub>3</sub> solution, and then centrifuged again at 4,000g for 5 min. The resulting supernatant was filtered through a 0.22- $\mu$ m filter and transferred to vials for quantification with high performance liquid chromatography (HPLC). The component of organic acids in the extraction was separated in an Athena C18-WP (4.6 mm  $\times$  250 mm) column (CNW Technologies GmbH, Germany) maintained at a constant temperature of 30°C. The mobile phase consisted of 25 mM KH<sub>2</sub>PO<sub>4</sub> (pH 2.5) with methanol at a constant flow rate of 0.8 ml min<sup>-1</sup>. The concentration of organic acids was detected at 220 nm with a photodiode array detector (PDA) coupled to a HPLC (Waters e2695 system, Milford, MA, USA). The quantitative determination of the organic acids was obtained by analyzing the chromatographic data using Data System based on the corresponding retention time and peak area of the different organic acids.

## Chlorophyll, Dry Weight, and Leaf Area

The content of chlorophyll *a* and *b* in *O. cordata* floating leaves were determined spectrophotometrically at 649 and 665 nm (TU-1810PC, Purkinje General, China) according to the method described in Shao et al. (2017). Dry weight (DW) was measured after the leaves were dried for 48 h at 80°C. Projected (1-sided) leaf area was calculated from digital photographs with AreaAna software (Huazhong University of Sciences and Technology, China).

## Statistical Analysis

The data were analyzed using SPSS 16.0 (SPSS Inc., Chicago, USA). The significance of CO<sub>2</sub> treatment and sample time were determined with two-way ANOVA. The independent sample *t*-tests were used for the comparisons on the effects of CO<sub>2</sub> concentrations on the morphological and anatomical characteristics as well as the pH-drift traits. Pearson correlation was used to test the correlation between different enzyme activities and the significance level was set at 5%.

## RESULTS

### Chlorophyll, FW/DW, and Leaf Area

High CO<sub>2</sub> did not have a statistically significant effect on the chlorophyll content, FW/DW and leaf area in *O. cordata* floating leaves, when compared with that of low CO<sub>2</sub> ( $p > 0.05$ ; **Table 2**).

### Anatomical Structure and Ultrastructure of Chloroplast

The leaf anatomy of *O. cordata* floating leaves under high and low CO<sub>2</sub> were shown in **Figure 1** and the basic structure of leaves did not vary with CO<sub>2</sub> concentrations. The surface of *O. cordata* floating leaf was relatively flat and smooth. Transverse section observation showed that the upper and lower epidermis was single-layered rectangular cells, closely arranged (**Figures 1A–F**). The area and width of the upper epidermal cells in leaves grown

**TABLE 2 |** Effects of low and high CO<sub>2</sub> concentrations on the morphological and anatomical characteristics of the *O. cordata* floating leaves.

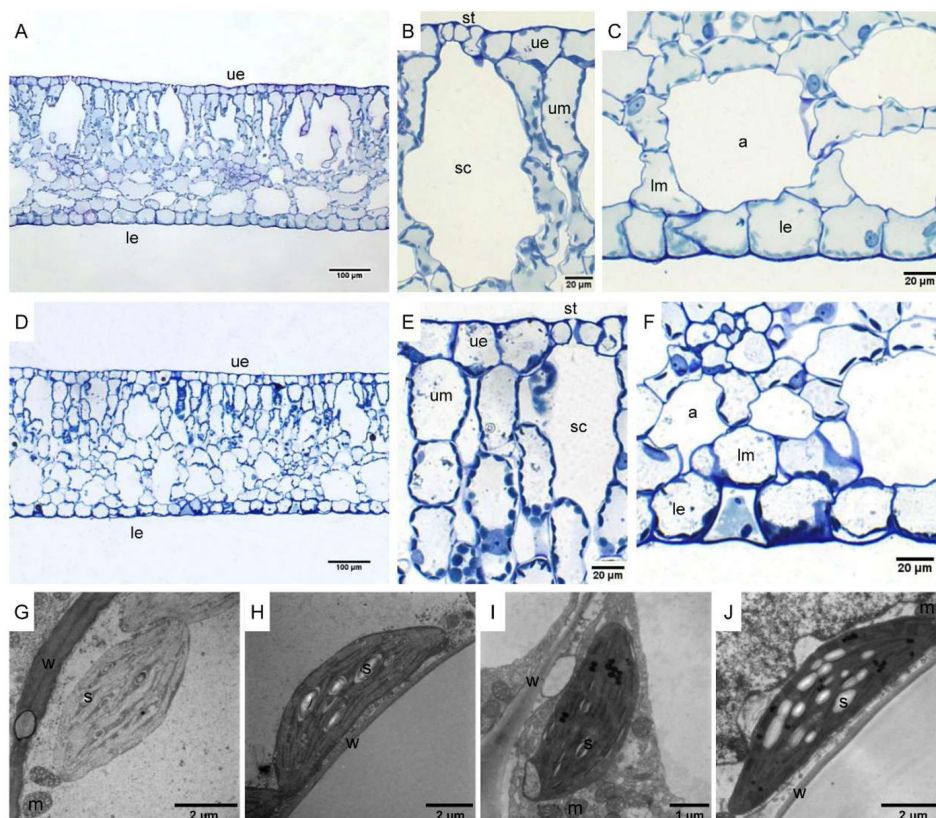
Character	Low CO <sub>2</sub>	High CO <sub>2</sub>
<i>Whole leaf characteristics</i>		
Chlorophyll a (mg/g FW)	1.24 (0.34) <sup>a</sup>	1.02 (0.10) <sup>a</sup>
Chlorophyll b (mg/g FW)	0.43 (0.13) <sup>a</sup>	0.32 (0.05) <sup>a</sup>
Chlorophyll a+b (mg/g FW)	1.67 (0.41) <sup>a</sup>	1.34 (0.13) <sup>a</sup>
Chlorophyll a/b	3.09 (1.05) <sup>a</sup>	3.23 (0.45) <sup>a</sup>
FW/DW	9.79 (1.69) <sup>a</sup>	9.43 (1.33) <sup>a</sup>
Specific leaf area (1-sided cm <sup>2</sup> g <sup>-1</sup> FW)	51.17 (1.68) <sup>a</sup>	58.97 (10.70) <sup>a</sup>
<i>Cell characteristics</i>		
Upper epidermis cell length ( $\mu$ m)	28.75 (8.27) <sup>a</sup>	31.73 (6.82) <sup>a</sup>
Upper epidermis cell width ( $\mu$ m)	21.57 (2.89) <sup>a</sup>	26.60 (4.23) <sup>b</sup>
Length/width of upper epidermis cell	1.33 (0.34) <sup>a</sup>	1.22 (0.33) <sup>a</sup>
Lower epidermis cell length ( $\mu$ m)	39.08 (7.62) <sup>a</sup>	35.12 (6.53) <sup>a</sup>
Lower epidermis cell width ( $\mu$ m)	31.11 (4.74) <sup>a</sup>	29.66 (4.02) <sup>a</sup>
Length/width of lower epidermis cell	1.27 (0.26) <sup>a</sup>	1.19 (0.19) <sup>a</sup>
Upper epidermis cell area ( $\mu$ m <sup>2</sup> )	643.52 (184.62) <sup>a</sup>	774.73 (208.08) <sup>b</sup>
Lower epidermis cell area ( $\mu$ m <sup>2</sup> )	1136.8 (352.82) <sup>a</sup>	1060.19 (193.92) <sup>a</sup>
Upper mesophyll cell area ( $\mu$ m <sup>2</sup> )	2191.88 (3290.49) <sup>a</sup>	1370.04 (427.98) <sup>a</sup>
Lower mesophyll cell area ( $\mu$ m <sup>2</sup> )	1027.64 (338.36) <sup>a</sup>	981.53 (313.47) <sup>a</sup>
Air space area ( $\mu$ m <sup>2</sup> )	3987.07 (2239.01) <sup>a</sup>	4856.12 (1542.00) <sup>a</sup>
Stomatic chamber area ( $\mu$ m <sup>2</sup> )	10080.64 (5179.99) <sup>a</sup>	6441.20 (2260.55) <sup>a</sup>
<i>Chloroplast characteristics</i>		
<i>Chloroplasts in epidermal cells</i>		
Chloroplast major axis ( $\mu$ m)	7.48 (0.82) <sup>aA</sup>	4.87 (1.11) <sup>bA</sup>
Chloroplast minor axis ( $\mu$ m)	3.02 (0.63) <sup>aA</sup>	1.95 (0.26) <sup>bA</sup>
Major axis/minor axis of chloroplast	2.57 (0.56) <sup>aA</sup>	2.50 (0.42) <sup>aA</sup>
Area of chloroplast ( $\mu$ m <sup>2</sup> )	17.01 (3.90) <sup>aA</sup>	7.29 (2.26) <sup>bA</sup>
Area of starch ( $\mu$ m <sup>2</sup> )	0.35 (0.26) <sup>aA</sup>	0.11 (0.10) <sup>bA</sup>
Area ratio of starch to chloroplast	0.02 (0.01) <sup>aA</sup>	0.01 (0.01) <sup>aA</sup>
<i>Chloroplasts in mesophyll cells</i>		
Chloroplast major axis ( $\mu$ m)	6.86 (1.08) <sup>aA</sup>	6.81 (1.23) <sup>aB</sup>
Chloroplast minor axis ( $\mu$ m)	2.36 (0.61) <sup>bB</sup>	2.80 (0.97) <sup>aB</sup>
Major axis/minor axis of chloroplast	3.03 (0.64) <sup>aA</sup>	2.66 (0.90) <sup>aA</sup>
Area of chloroplast ( $\mu$ m <sup>2</sup> )	12.95 (5.02) <sup>aB</sup>	14.84 (6.31) <sup>aB</sup>
Area of starch ( $\mu$ m <sup>2</sup> )	0.68 (0.74) <sup>aA</sup>	1.05 (0.62) <sup>aB</sup>
Area ratio of starch to chloroplast	0.04 (0.04) <sup>aB</sup>	0.08 (0.04) <sup>aB</sup>

Mean values ( $n=2-4$ ) are given with s.d. in parentheses. Significant differences between leaves treated with different CO<sub>2</sub> concentration are shown based on independent sample *t*-tests. Data with different lower-case letters are significantly different between low and high CO<sub>2</sub> treatments ( $p < 0.05$ ). Data with different upper-case letters are significantly different between chloroplasts in epidermal and mesophyll cells ( $p < 0.05$ ).

under high CO<sub>2</sub> were notably larger than those under low CO<sub>2</sub> ( $p < 0.05$ ; **Table 2**), however there was no significant difference in lower epidermal cells ( $p > 0.05$ ; **Table 2**). The length and length/width ratio of the upper and lower epidermal cells were not significantly affected by CO<sub>2</sub> concentrations ( $p > 0.05$ ; **Table 2**). Stomata only distributed on the upper epidermis of floating leaves of *O. cordata* (**Figures 1B, E**). The mesophyll tissues were developed, and there were air spaces interspersed among the lower mesophyll cells. The differentiation between palisade tissues and spongy tissues was present (**Figures 1B, C, E, F**). There was no significant difference in the area of air spaces, stomatic chamber, upper and lower mesophyll cells between high and low CO<sub>2</sub> treated leaves ( $p > 0.05$ ; **Table 2**).

Considering chloroplasts can differ in cells responding to the variation of environmental factors, we evaluated chloroplast shape, size and ultrastructure in both epidermal and mesophyll





**FIGURE 1 |** Leaf anatomy and chloroplast ultrastructure of *O. cordata* floating leaves grown at low and high CO<sub>2</sub>. **(A–C)** Anatomy of *O. cordata* floating leaf grown under low CO<sub>2</sub>. **(D–F)** Anatomy of *O. cordata* floating leaf grown under high CO<sub>2</sub>. **(G)** Chloroplast in epidermal cells under low CO<sub>2</sub>. **(H)** Chloroplast in mesophyll cells under low CO<sub>2</sub>. **(I)** Chloroplast in epidermal cells under high CO<sub>2</sub>. **(J)** chloroplast in mesophyll cells under high CO<sub>2</sub>. a, air space; le, lower epidermal cell; lm, lower mesophyll cell; m, mitochondria; s, starch; st, stoma; sc, stomatic chamber; ue, upper epidermal cell; um, upper mesophyll cell; w, cell wall.

cells grown at high and low CO<sub>2</sub>. In leaves grown at low and high CO<sub>2</sub>, the chloroplasts in epidermal cells were spindle-shaped (**Figures 1G, I**). The epidermal chloroplasts under low CO<sub>2</sub> (**Figure 1G**) had longer length for the major and minor axis, bigger size and more starch area occupied in the chloroplast, when compared with those at high CO<sub>2</sub> (**Figure 1I**;  $p < 0.05$ ; **Table 2**). However, the ratio of major axis length and minor axis length of the chloroplast and the area ratio of starch to chloroplast were not notably influenced by CO<sub>2</sub> concentrations ( $p > 0.05$ ; **Table 2**). For the mesophyll chloroplast, when compared with low CO<sub>2</sub> condition, except the slight but significant increased minor axis length at high CO<sub>2</sub> ( $p < 0.05$ ; **Figures 1H, J**; **Table 2**), there was no other significant difference on the ultrastructure of this type of chloroplast ( $p > 0.05$ ; **Table 2**). The comparison between these two types of chloroplasts showed that, at low CO<sub>2</sub>, the epidermal chloroplasts had significantly larger area but lower area ratio of starch to chloroplast than mesophyll chloroplasts ( $p < 0.05$ ; **Table 2**). When at high CO<sub>2</sub>, the epidermal chloroplasts had significantly smaller size and area, as well as the smaller starch area and lower area ratio of starch to chloroplast than mesophyll chloroplasts ( $p < 0.05$ ; **Table 2**).

## pH-Drift Characteristics

The pH-drift experiments provided clear evidence for HCO<sub>3</sub><sup>-</sup> use in both CO<sub>2</sub> conditions in *O. cordata* floating leaves (**Table 3**). Both high and low CO<sub>2</sub> treated *O. cordata* floating leaves raised pH and reduced the concentration of free CO<sub>2</sub> and HCO<sub>3</sub><sup>-</sup> in the medium significantly from the initial values of 7.9, 23 μM and 0.99 mM. Final pH ranged from 10.33 for high CO<sub>2</sub> acclimation to 10.62 for low CO<sub>2</sub> acclimation. Correspondingly, the high and low CO<sub>2</sub> acclimated leaves depleted CO<sub>2</sub> and HCO<sub>3</sub><sup>-</sup> concentrations to 17 and 4 nM, 0.18 and 0.08 mM, respectively. The [CO<sub>2</sub>], [HCO<sub>3</sub><sup>-</sup>], and [C<sub>T</sub>] remaining at the end of pH-drift were significantly higher at high CO<sub>2</sub> condition as compared with low CO<sub>2</sub> acclimation ( $p < 0.05$ ). The quotient of C<sub>T</sub>/Alk, used to estimate the carbon uptake ability, was significantly lower in low CO<sub>2</sub> acclimated leaves ( $p < 0.05$ ), indicating that the ability of using HCO<sub>3</sub><sup>-</sup> was more efficient under low CO<sub>2</sub> condition.

## Key Photosynthetic Enzymes Activity

Rubisco activity was 4.4-fold higher in low CO<sub>2</sub> compared to high CO<sub>2</sub> acclimated *O. cordata* floating leaves at dawn ( $p < 0.05$ ;

**TABLE 3** | Final pH, alkalinity, and carbon concentrations at the end of pH-drift experiments.

Treatments	Final pH <sup>#</sup>	Alk	C <sub>T</sub> (mM)	CO <sub>2</sub> (μM)	HCO <sub>3</sub> <sup>-</sup> (mM)	C <sub>T</sub> /Alk
High CO <sub>2</sub>	10.33(0.12) <sup>a</sup>	1.04(0.11) <sup>a</sup>	0.49(0.05) <sup>a</sup>	0.017(0.008) <sup>a</sup>	0.18(0.04) <sup>a</sup>	0.48(0.05) <sup>a</sup>
Low CO <sub>2</sub>	10.62(0.16) <sup>b</sup>	1.06(0.12) <sup>a</sup>	0.34(0.10) <sup>b</sup>	0.004(0.002) <sup>b</sup>	0.08(0.04) <sup>b</sup>	0.32(0.09) <sup>b</sup>

Mean values (n=3–4) are given with s.d. in parentheses. <sup>#</sup>calculated as a geometric mean. Alk means alkalinity. Data with different lower-case letters within one column are significantly different between high and low CO<sub>2</sub> acclimated *O. cordata* floating leaves (p<0.05).

**TABLE 4** | Two-way ANOVA results for physiological parameters in *O. cordata*, with CO<sub>2</sub> concentration and time as factors.

Variables	Source					
	CO <sub>2</sub>		Time		CO <sub>2</sub> × Time	
	F	p-value	F	p-value	F	p-value
Rubisco	12.953	<b>0.007</b>	2.446	0.156	0.071	0.796
PEPC	30.982	<b>0.001</b>	0.084	0.779	0.097	0.763
PEPC/Rubisco	25.209	<b>0.001</b>	10.504	<b>0.012</b>	6.923	<b>0.030</b>
PPDK	7.250	<b>0.027</b>	0.827	0.390	0.714	0.423
NADP-ME	2.013	0.194	0.395	0.547	0.046	0.836
Acidity	8.392	<b>0.016</b>	0.042	0.842	1.713	0.220
Malic acid	13.847	<b>0.006</b>	3.114	0.116	12.459	<b>0.008</b>
Citric acid	0.690	0.430	0.006	0.941	1.237	0.298
Aspartic acid	0.011	0.918	1.598	0.242	0.422	0.534
trans-Aconitic acid	0.500	0.500	0.151	0.708	0.348	0.572
Fumaric acid	141.241	<b>0.000</b>	4.736	0.061	4.972	0.056

Significant p-values (p<0.05) are shown in bold. The degrees of freedom =1 in all cases.

**Table 4**), in contrast at dusk the difference was not statistically significant (p>0.05; **Figure 2A**). PEPC activity was 1.5-fold higher in low CO<sub>2</sub> compared to high CO<sub>2</sub> leaves (p<0.05; **Table 4**), at both dusk and dawn (**Figure 2B**). In high CO<sub>2</sub> acclimated *O. cordata* floating leaves, the PEPC : Rubisco ratio was 1.7 at the end of day and increased to 4.3 by the end of night. For low CO<sub>2</sub> conditions, the ratio was 1.1 at the end of day and increased slightly to 1.5 by the end of night (**Figure 2C, Table 4**). PPDK showed a similar pattern to PEPC (**Figure 2D**). The CO<sub>2</sub> concentration triggered a 1.3-fold increase in *O. cordata* floating leaves at low compared to high CO<sub>2</sub> at dusk (p<0.05), but had a slightly and not significantly promotion at dawn (p>0.05). The activity of the decarboxylating enzyme NADP-ME did not vary with the CO<sub>2</sub> concentrations (**Figure 2E**). There was a significant correlation between activity of PEPC vs. Rubisco and PPDK vs. PEPC (p<0.05; **Figures 2F, G**). Activity of NADP-ME did not correlate with changes in activity of PEPC (data not shown).

## Daily Oscillations of Acidity and Organic Acids

The CAM capacity in *O. cordata* floating leaves was assessed initially by measuring the diel change in acidity. Across the high and low CO<sub>2</sub> conditions, acidity levels varied between 35 and 89 μequiv g<sup>-1</sup> FW at dusk and between 54 and 74 μequiv g<sup>-1</sup> FW at dawn (**Figure 3A**). There was a significant difference between dusk and dawn acidity levels in *O. cordata* floating leaves at low CO<sub>2</sub> of about 20 μequiv g<sup>-1</sup> FW (p<0.05), in contrast there was no evidence for diel acidity variation at high CO<sub>2</sub>.

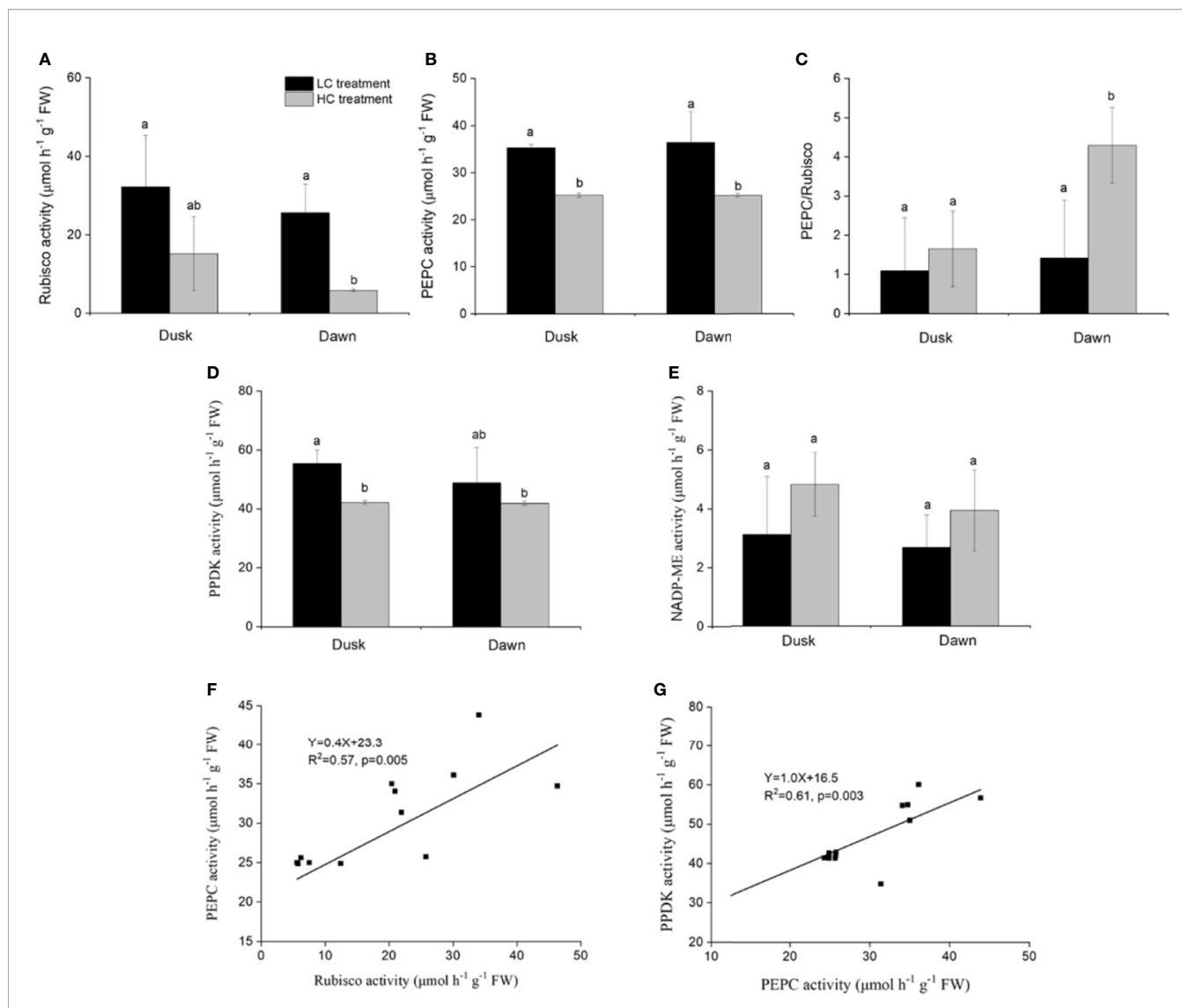
We also analyzed organic acids levels in floating leaves of *O. cordata* at dusk and dawn. The malic acid concentrations did not differ between the two time points at high CO<sub>2</sub> (p>0.05; **Figure 3B, Table 4**). In contrast, leaf tissues of low CO<sub>2</sub> treatment showed significant dusk/dawn oscillation in malic acid content. The concentration of malic acid at dusk was only 25% of that at dawn, showing an obvious depletion of the malate pool during day period at low CO<sub>2</sub> (p<0.05; **Figure 3B, Table 4**). However, the accumulation of malic acid at dawn did not change with the concentrations of CO<sub>2</sub> (p>0.05). Concentrations of citric acid, aspartic acid and trans-aconitic acid in the leaf tissue did not change between the two sampling times and CO<sub>2</sub> conditions (p>0.05; **Figures 3C–E, Table 4**). In contrast, the concentration of fumaric acid in high CO<sub>2</sub> acclimated *O. cordata* floating leaves was 5.5-fold higher at dusk and 4.1-fold higher at dawn than in low CO<sub>2</sub> (p<0.05), but with no significant differences between the two sampling times at both CO<sub>2</sub> treatments (p>0.05; **Figure 3F, Table 4**).

## DISCUSSION

### Responses of Anatomy of *O. cordata* Floating Leaves to Variable CO<sub>2</sub>

Through the transverse section observation of the *O. cordata* floating leaves, some anatomical changes were observed following acclimation with different CO<sub>2</sub>. This is in agreement with previous reports in terrestrial or aquatic plants (Thomas and Harvey, 1983; Bray and Reid, 2002; Driscoll et al., 2006; Han et al., 2020). The most striking change occurred in *O. cordata* floating leaves responding to high CO<sub>2</sub> is the increased transverse-section area and width of upper epidermal cells. A similar increase of the area of upper epidermal cell in *O. alismoides* grown under elevated CO<sub>2</sub> was found (Han et al., 2020). In maize, the epidermal cell size from the paradermal view was also shown to be highly responsive to environmental CO<sub>2</sub> concentration (Driscoll et al., 2006). This would suggest that the enlarged epidermal cells are formed in response to high CO<sub>2</sub>. This response may have come about to have consequences for photosynthesis possibly by expanding CO<sub>2</sub> diffusion through the upper epidermal cell membrane. Nevertheless, in some species, such as in *Phaseolus vulgaris* L. seedlings (Radoglou and Jarvis, 1992), the epidermal cells remained constant in size irrespective of CO<sub>2</sub> treatment.

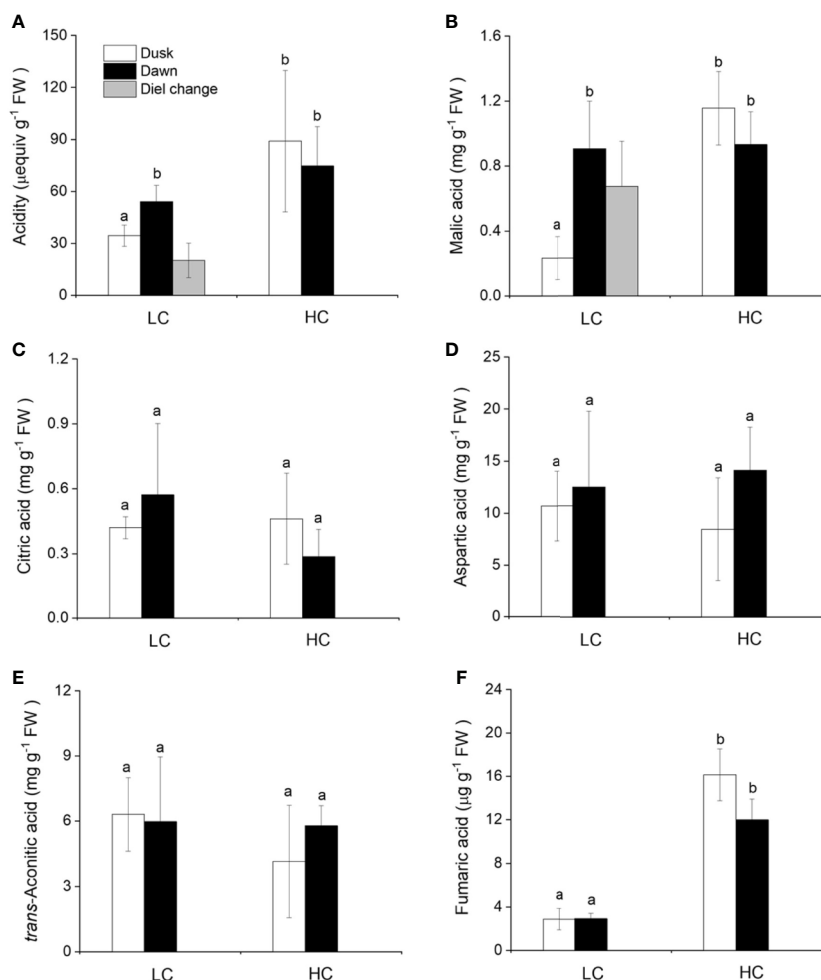
Stomata were found to be distributed on the upper surface of *O. cordata* floating leaves. Generally, most submerged leaves do not possess stomata, or, where they do exist but they are nonfunctional (Sculthorpe, 1967). However, floating leaves of



**FIGURE 2 |** Influence of CO<sub>2</sub> concentrations on activities of enzymes from *O. cordata* floating leaves collected at dusk (21:00 h, before the lights turn off) and dawn (07:00 h, before the lights turn on), as well as the correlations between activity of Rubisco, pyruvate phosphate dikinase (PPDK) and activity of phosphoenolpyruvate carboxylase (PEPC) at dusk and dawn, grown at low and high concentrations of CO<sub>2</sub>. **(A)** Rubisco activity. **(B)** PEPC activity. **(C)** Ratio of PEPC to Rubisco activity. **(D)** PPDK activity. **(E)** NADP-malic enzyme (NADP-ME) activity. **(F)** Correlation between activity of Rubisco and activity of PEPC. **(G)** Correlation between activity of PPDK and activity of PEPC. In (A–E), the mean values (n=3–4) with their s.d. are shown. Different letters show significant differences ( $p < 0.05$ , *post hoc* Duncan's test) among treatments. In (F–G), each point represents the activity measured from an individual sample from high CO<sub>2</sub> and low CO<sub>2</sub> acclimated plants. Pearson correlation was used to test the correlation between activity of PEPC and Rubisco, PPDK and PEPC.

aquatic plants, such as the aquatic pteridophyte *Marsilea*, water lilies, and *Potamogeton octandrus* have stomata on the upper surface (Lin and Yang, 1999; Rudall and Knowles, 2013; Li et al., 2019). The stomata of terrestrial plants generally distribute more on lower epidermis than upper epidermis in order to reduce water loss. However, in aquatic plants, the distribution of stomata on the upper epidermis is obviously greater than that on the lower epidermis, since the upper surface of the floating leaf is accessible to the air. Floating leaves of aquatic plants is one of the examples with exploitation strategies to overcome the problem of carbon limitation that could exploit more constant and available CO<sub>2</sub>

from the atmosphere based on stomata (Maberly and Gontero, 2018). Observations of the ultrathin sections showed that the epidermal chloroplast had higher sensitivity to high CO<sub>2</sub> than the mesophyll chloroplast in *O. cordata* floating leaves, which differs from the responses in *O. alismoides* (Han et al., 2020), where both epidermal and mesophyll chloroplasts showed sensitive responses to CO<sub>2</sub> elevation and the size of both type of chloroplasts were increased. However, it should be noted that, in both *O. cordata* and *O. alismoides*, the area ratio of starch to chloroplast was much greater in mesophyll than in epidermal cells regardless of the CO<sub>2</sub> concentrations.



**FIGURE 3** | Influence of CO<sub>2</sub> concentrations on acidity and concentrations of organic acids from *O. cordata* floating leaves collected at dusk (21:00 h, before the lights turn off) and dawn (07:00 h, before the lights turn on). (A) Acidity. (B) Malic acid. (C) Citric acid. (D) Aspartic acid. (E) *trans*-Aconitic acid. (F) Fumaric acid. LC means low CO<sub>2</sub>; HC means high CO<sub>2</sub>. The mean values (n=3) with their s.d. are shown. Different letters indicate significant differences ( $p < 0.05$ , *post hoc* Duncan's test) among treatments.

## Responses of CCMs in *O. cordata* Floating Leaves to Variable CO<sub>2</sub>

The pH-drift experiment confirmed the results reported by Cao et al. (2019), that floating leaves of *O. cordata* are able to use HCO<sub>3</sub><sup>-</sup>. As a general trend, amphibious heterophyllous plants, in contrast to consistently submerged rooted macrophytes, are not able to use HCO<sub>3</sub><sup>-</sup> for photosynthesis (Madsen and Sand-Jensen, 1991). However, clearly, *O. cordata* floating leaves exhibited substantial capacity for HCO<sub>3</sub><sup>-</sup> utilization, irrespective of the CO<sub>2</sub> concentrations during acclimation. Moreover, the HCO<sub>3</sub><sup>-</sup> utilization efficiency was relatively similar as that in other truly submerged bicarbonate user, such as *O. alismoides* (Zhang et al., 2014; Shao et al., 2017). Considering the much higher concentration of free CO<sub>2</sub> (380~1603 μM) in high CO<sub>2</sub> acclimated conditions, the finding of relatively efficient HCO<sub>3</sub><sup>-</sup> extraction in *O. cordata* floating leaves grown at high CO<sub>2</sub> was also surprising, because at least some aquatic plants decrease

investment in the capacity for HCO<sub>3</sub><sup>-</sup> utilization when living in an environment with sufficient CO<sub>2</sub> (Maberly and Spence, 1983; Madsen and Sand-Jensen, 1987). From a cost-benefit point of view, under high CO<sub>2</sub> conditions, investment in a CO<sub>2</sub>-concentrating system could be expected not to be profitable since the benefit in terms of carbon gain will most likely be restricted (Maberly and Gontero, 2017). However, Madsen and Maberly (1991) reported that the HCO<sub>3</sub><sup>-</sup> user *Ranunculus peltatus* still benefit significantly from HCO<sub>3</sub><sup>-</sup> usage even at very high CO<sub>2</sub> concentrations (greater than 200 μM). Overall, the patterns of inorganic carbon depletion in the pH-drift system confirm that the floating leaves of *O. cordata* are a constitutive bicarbonate user.

Based on the enzymatic activity analysis, *O. cordata* floating leaves have the carboxylating, PEP regenerating and decarboxylating enzymes that are needed for operating a C<sub>4</sub> pathway. We firstly compared the activities of Rubisco, PEPc, and PPK, there are hints of possible C<sub>4</sub> metabolism exist in *O.*



*cordata* floating leaves. Under both CO<sub>2</sub> acclimation conditions, the activity of PEPC was greater than that of Rubisco and the ratio of PEPC to Rubisco was about 1.5 and 4 in low and high CO<sub>2</sub> conditions, respectively. The ratio for *O. cordata* is lower than *Hydrilla verticillata*, but similar to those reported for *O. alismoides*, *O. acuminata*, and *Egeria densa*, all of which are regarded as C<sub>4</sub> aquatic plants (Casati et al., 2000; Bowes, 2011; Shao et al., 2017). In contrast, the PEPC/Rubisco ratio in terrestrial C<sub>3</sub> plants and aquatic plants that lack a biochemical concentrating mechanism is substantially less than 1 (Zhang et al., 2014). In addition, the activity of PPDK, that regenerates PEP to ensure the supply of substrate for PEPC, was significantly greater at low vs. high CO<sub>2</sub> and equivalent to that of PEPC. Thus, PPDK should be able to support PEPC activity. As the potential decarboxylating enzymes, the NADP-ME activity was not significantly different at low vs. high CO<sub>2</sub>. Previous work has shown that *H. verticillata* (Magnin et al., 1997) and *E. densa* (Casati et al., 2000) belong to the NADP-ME C<sub>4</sub>-subtype. *O. alismoides* and *O. acuminata* are the first reports of aquatic plants that belong to the NAD-ME C<sub>4</sub>-subtype (Zhang et al., 2014).

C<sub>4</sub> metabolism in some freshwater macrophytes is induced or up-regulated under low/limited CO<sub>2</sub> conditions, such as in *H. verticillata* and *E. densa* (Casati et al., 2000; Bowes, 2011). In *Eleocharis vivipara*, the C<sub>4</sub> cycle is present when its leaves are in air but absent when in water (Murphy et al., 2007). In the present study, it seems that the C<sub>4</sub> cycle is not abolished in high CO<sub>2</sub> acclimated *O. cordata* floating leaves, which implies that C<sub>4</sub> is constitutive in *O. cordata* floating leaves, like the other known two constitutive C<sub>4</sub> species in the genus *Ottelia*: *O. alismoides* and *O. acuminata* (Zhang et al., 2014; Shao et al., 2017; Han et al., 2020). C<sub>4</sub> plants require structural and functional coordination to operate C<sub>4</sub> efficiently. For *H. verticillata*, it performs single-cell C<sub>4</sub> photosynthesis, where C<sub>4</sub> production and decarboxylation occur in different parts of a cell (Bowes et al., 2002). For *O. alismoides*, a dual-cell C<sub>4</sub> model was assumed, where the epidermal cells produce C<sub>4</sub> product and the mesophyll cells decarboxylate the C<sub>4</sub> product; however, it is also possible that both processes could occur within the mesophyll cells (Han et al., 2020). For *O. cordata*, further research is needed to establish the precise location of key photosynthetic enzymes involved in the primary CO<sub>2</sub> fixation and decarboxylation, which could help to clarify the specific structural basis for C<sub>4</sub> cycle, as well as to confirm the C<sub>4</sub>-subtype in this species.

Aquatic CAM metabolism was firstly found in the freshwater lycophyte *Isoetes howellii* (Keeley, 1981), and subsequently found in other freshwater angiosperms such as *Crassula helmsii* (Newman and Raven, 1995), *Littorella uniflora* (Robe and Griffiths, 2000), *O. alismoides* (Zhang et al., 2014) and *Deinostema violaceum* (Yin et al., 2017). In CAM plants, a high nocturnal PEPC activity allows malic acid to be produced in the dark. In *O. cordata* floating leaves, PEPC remains active at night and its nocturnal activity was very high. Under low CO<sub>2</sub> condition, the PEPC : Rubisco ratio was ~2, which was consistent with nocturnal carboxylation as a consequence of CAM activity. In addition, the diel fluctuations of acidity have been considered to be

an important indicator to estimate CAM activity (Keeley, 1998). In the present study, only low CO<sub>2</sub> acclimated *O. cordata* floating leaves exhibited marked diurnal titratable acidity fluctuation, ~20 µequiv g<sup>-1</sup> FW, which was slightly lower than that found in *O. alismoides* (up to 34 µequiv g<sup>-1</sup> FW) (Zhang et al., 2014). It is also lower than *Vallisneria americana* and *V. spiralis*, which present evidence for CAM operation with diel acidity changes up to 42 and 51 µequiv g<sup>-1</sup> FW, respectively (Keeley, 1998). Nevertheless, similar or lower values have been reported in a number of other putative freshwater CAM species (Webb et al., 1988; Keeley, 1998). In contrast, when grown at high CO<sub>2</sub>, *O. cordata* floating leaves showed a small but not statistically significant diel change in acidity, which indicates the absence of CAM. The field experiments performed by Cao et al. (2019), where the samples of *O. cordata* floating leaves were collected from their natural stands with the environmental CO<sub>2</sub> concentration ~120 µM, showed the presence of CAM with 12.5 µequiv g<sup>-1</sup> FW diel acidity change. This different performance of CAM activity between *O. cordata* floating leaves grown *in situ* and in laboratory cultures, might be the consequence of complex environmental variables in the field. CAM activity in aquatic plants, could be affected by a combination of factors including CO<sub>2</sub> concentration, light intensity, temperature, as well as the leaf aging (Maberly and Gontero, 2017; Huang et al., 2018). Thus, the results presented here confirmed that CAM metabolism is present but facultative in *O. cordata* floating leaves.

Generally, malate is the primary product of CAM photosynthesis and presents substantial diel fluctuations (Keeley, 1998; Igamberdiev and Eprintsev, 2016). At night, the final C<sub>4</sub> product malic acid is accumulated and stored in the vacuole; during day, malate comes out of the vacuole and is decarboxylated to produce CO<sub>2</sub> (Borland and Taybi, 2004). In *O. cordata* floating leaves, we detected five types of organic acids and only malic acid revealed marked diurnal fluctuations at low CO<sub>2</sub>, the other four types of organic acid including citric acid, aspartic acid, *trans*-aconitic acid and fumaric acid were quite stable throughout the day. The significant decrease of malic acid during day suggests that it was most likely decarboxylated to produce CO<sub>2</sub> for photosynthesis in *O. cordata* floating leaves when grown at low CO<sub>2</sub>, as it is in most of the aquatic CAM plants (Keeley, 1998). The nocturnal accumulation level of citric acid is similar with malic acid, however, the role of citrate accumulation in CAM plants is still unclear. Lüttge (1988) reported that CAM plants would transform a part of stored malate to citrate *via* tricarboxylic acid cycle (TCA cycle) to maintain their metabolic balance. Winter and Smith (1996) reported that citrate may serve to increase the pH-buffering capacity in the vacuoles of CAM plants, which would enhance accumulation of malate. The present data showed that the ratio of nocturnal citric acid accumulation to malic acid accumulation was 33% and 67% for high and low CO<sub>2</sub> acclimated *O. cordata* floating leaves, respectively. In the CAM plant *Euphorbia milii*, citrate and malate accumulated equally (Herrera, 2013); whereas, Miszalski et al. (2013) found that in the CAM tree *Clusia hilariana*, malate and citrate experienced independent fluctuations, which were related to photosynthesis and

respiration, respectively. In addition, in *O. cordata* floating leaves, aspartic acid and *trans*-aconitic acid presented much higher level than malic acid, but did not respond to CO<sub>2</sub> availability, regardless of dusk and dawn. During metabolism the intensity of converting reactions among different carbon-compounds can cause preferential and higher accumulation of other organic acids than malic acid (Igamberdiev and Eprintsev, 2016). Moreover, aspartic acid content might be partially contributed by its derivative -asparagine, since these two amino acids are not separated quite well on the Athena C18-WP column.

## CONCLUSIONS

We conclude that the anatomical structure and CCMs in *O. cordata* floating leaves exhibits responses to CO<sub>2</sub> availability. High CO<sub>2</sub> acclimation increased the size of upper epidermal cells, but decreased the area of chloroplast in epidermal cells. Under high CO<sub>2</sub>, *O. cordata* floating leaves are able to use HCO<sub>3</sub><sup>-</sup> in addition to CO<sub>2</sub> as an inorganic carbon source for photosynthesis, and can perform C<sub>4</sub> metabolism. When exposed to low CO<sub>2</sub>, it also exhibits CAM cycling characteristics. Whether this species could perform other strategies under different CO<sub>2</sub> conditions, such as the uptake of CO<sub>2</sub> from sediment, is not known yet. Overall, the floating leaves of *O. cordata* present flexible and efficient ability to adjust structure and CCMs for utilization of inorganic carbon, allowing this species to form dense biomass and to be successfully distributed in shallow waters (He and Sun, 1990). Further studies are needed to establish the detailed biochemical pathway for C<sub>4</sub> and CAM metabolism in this species, as well as the regulatory mechanism among the three CCMs and the exploitation strategies for exploiting atmospheric CO<sub>2</sub> responding to the variable CO<sub>2</sub> availability in the habitat.

## REFERENCES

- Ainsworth, E. A., and Long, S. P. (2005). What have we learned from 15 years of free-air CO<sub>2</sub> enrichment (FACE)? A meta-analytic review of the responses of photosynthesis, canopy properties and plant production to rising CO<sub>2</sub>. *New Phytol.* 165, 351–372. doi: 10.1111/j.1469-8137.2004.01224.x
- Borland, A. M., and Taybi, T. (2004). Synchronization of metabolic processes in plants with Crassulacean acid metabolism. *J. Exp. Bot.* 55, 1255–1265. doi: 10.1093/jxb/erh105
- Bowes, G., and Salvucci, M. E. (1989). Plasticity in the photosynthetic carbon metabolism of submersed aquatic macrophytes. *Aquat. Bot.* 34, 233–266. doi: 10.1016/0304-3770(89)90058-2
- Bowes, G., Rao, S. K., Estavillo, G. M., and Reiskind, J. B. (2002). C<sub>4</sub> mechanisms in aquatic angiosperms: comparisons with terrestrial C<sub>4</sub> systems. *Funct. Plant Biol.* 29, 379–392. doi: 10.1071/pp01219
- Bowes, G. (2011). "Single-cell C<sub>4</sub> photosynthesis in aquatic plants," in *C<sub>4</sub> photosynthesis and related CO<sub>2</sub> concentrating mechanisms*. Eds. A. S. Raghavendra and R. F. Sage (New York: Springer), 63–80.
- Bray, S., and Reid, D. M. (2002). The effect of salinity and CO<sub>2</sub> enrichment on the growth and anatomy of the second trifoliate leaf of *Phaseolus vulgaris*. *Can. J. Bot.* 80, 349–359. doi: 10.1139/b02-018
- Cao, Y., Liu, Y., Ndirangu, L., Li, W., Xian, L., and Jiang, H. S. (2019). The analysis of leaf traits of eight *Ottelia* populations and their potential ecosystem functions in karst freshwaters in China. *Front. Plant Sci.* 9, 1938. doi: 10.3389/fpls.2018.01938

## DATA AVAILABILITY STATEMENT

All datasets presented in this study are included in the article/ supplementary material.

## AUTHOR CONTRIBUTIONS

WH and SH designed the experiments. WH, SH, and ZX performed the experiments and collected the data. WH, SH, and WL analyzed and prepared the manuscript. All authors contributed to the article and approved the submitted version.

## FUNDING

This work was supported by the Strategic Priority Research Program of the Chinese Academy of Sciences (Grant No. XDB31000000) and the National Natural Science Foundation of China (Grant No. 31970368).

## ACKNOWLEDGMENTS

We thank Hongsheng Jiang, Yu Cao, Yu Cheng, and Zhenwei Lu for assistance in the field sampling. We thank Dr. Brigitte Gontero and Dr. Stephen Maberly for valuable advices and language polishing during the preparation of the article. The authors are in debt to the Chinese Academy of Sciences (CAS) for the scholarship awarded to WH. We also thank reviewers and editors for valuable suggestions on the manuscript.

- Casati, P., Lara, M. V., and Andreo, C. S. (2000). Induction of a C<sub>4</sub>-like mechanism of CO<sub>2</sub> fixation in *Egeria densa*, a submersed aquatic species. *Plant Physiol.* 123, 1611–1622. doi: 10.1104/pp.123.4.1611
- Driscoll, S., Prins, A., Olmos, E., Kunert, K., and Foyer, C. (2006). Specification of adaxial and abaxial stomata, epidermal structure and photosynthesis to CO<sub>2</sub> enrichment in maize leaves. *J. Exp. Bot.* 57, 381–390. doi: 10.1093/jxb/erj030
- Han, S., Maberly, S. C., Gontero, B., Xing, Z., Li, W., Jiang, H., et al. (2020). Structural basis for C<sub>4</sub> photosynthesis without Kranz anatomy in leaves of the submersed freshwater plant *Ottelia alismoides*. *Ann. Bot.* 125, 8697–879. doi: 10.1093/aob/mcaa005
- He, J., and Sun, X. (1990). *Ottelia emersa* Z.C. Zhao et R.L. Luo (Hydrocharitaceae) - a Synonym of *O. cordata* (Wallich) Dandy. *Aquat. Bot.* 36, 395–398. doi: 10.1016/0304-3770(90)90056-q
- Herrera, A. (2013). Crassulacean acid metabolism-cycling in *Euphorbia milii*. *AoB Plants* 5, plt014. doi: 10.1093/aobpla/plt014
- Huang, W. M., Shao, H., Zhou, S. N., Zhou, Q., Fu, W. L., Zhang, T., et al. (2018). Different CO<sub>2</sub> acclimation strategies in juvenile and mature leaves of *Ottelia alismoides*. *Photosynth. Res.* 138, 219–232. doi: 10.1007/s11120-018-0568-y
- Hussner, A., Smith, R., Mettler-Altmann, T., Hill, M. P., and Coetzee, J. (2019). Simulated global increases in atmospheric CO<sub>2</sub> alter the tissue composition, but not the growth of some submersed aquatic plant bicarbonate users growing in DIC rich waters. *Aquat. Bot.* 153, 44–50. doi: 10.1016/j.aquabot.2018.11.009
- Igamberdiev, A. U., and Eprintsev, A. T. (2016). Organic acids: the pools of fixed carbon involved in redox regulation and energy balance in higher plants. *Front. Plant Sci.* 7, 1042. doi: 10.3389/fpls.2016.01042

- IPCC (2014). "Climate Change. Synthesis Report", in *Contribution of Working Groups I, II and III to the Fifth Assessment Report of the Intergovernmental Panel on Climate Change*, vol. 151. Eds. Core Writing Team, R. K. Pachauri, L. A. Meyer (Geneva, Switzerland: IPCC).
- Iversen, L. L., Winkel, A., Baastrup-Spohr, L., Hinke, A. B., Alahuhta, J., Baastrup-Pedersen, A., et al. (2019). Catchment properties and the photosynthetic trait composition of freshwater plant communities. *Science* 366, 878–881. doi: 10.1126/science.aay5945
- Johnson, V., Brownlee, C., Rickaby, R., Graziano, M., Milazzo, M., and Hall-Spencer, J. (2013). Responses of marine benthic microalgae to elevated CO<sub>2</sub>. *Mar. Biol.* 160, 1813–1824. doi: 10.1007/s00227-011-1840-2
- Keeley, J. E. (1981). *Isoetes howellii*: a submerged aquatic CAM plant? *Am. J. Bot.* 68, 420–424. doi: 10.1002/j.1537-2197.1981.tb06380.x
- Keeley, J. E. (1998). CAM photosynthesis in submerged aquatic plants. *Bot. Rev.* 64, 121–175. doi: 10.1007/BF02856581
- Klavnsen, S. K., and Maberly, S. C. (2010). Effect of light and CO<sub>2</sub> on inorganic carbon uptake in the invasive aquatic CAM-plant *Crassula helmsii*. *Funct. Plant Biol.* 37, 737–747. doi: 10.1071/FP09281
- Klavnsen, S. K., Madsen, T. V., and Maberly, S. C. (2011). Crassulacean acid metabolism in the context of other carbon-concentrating mechanisms in freshwater plants: a review. *Photosynth. Res.* 109, 269–279. doi: 10.1007/s11200-011-9630-8
- Koch, M., Bowes, G., Ross, C., and Zhang, X. H. (2013). Climate change and ocean acidification effects on seagrasses and marine macroalgae. *Global Change Biol.* 19, 103–132. doi: 10.1111/j.1365-2486.2012.02791.x
- Li, X., He, D., and Guo, Y. (2019). Morphological structure and physiological research of heterophyly in *Potamogeton octandrus*. *Plant Syst. Evol.* 305, 223–232. doi: 10.1007/s00606-019-1564-1
- Li, Z. Z., Ngarega, B. K., Lehtonen, S., Gichira, A. W., Karichu, M. J., Wang, Q. F., et al. (2020). Cryptic diversity within the African aquatic plant *Ottelia ulvifolia* (Hydrocharitaceae) revealed by population genetic and phylogenetic analyses. *J. Plant Res.* 133, 373–381. doi: 10.1007/s10265-020-01175-2
- Lin, B., and Yang, W. (1999). Blue light and abscisic acid independently induce heterophyllous switch in *Marsilea quadrifolia*. *Plant Physiol.* 119, 429–434. doi: 10.1104/pp.119.2.429
- Long, S. P., Ainsworth, E. A., Rogers, A., and Ort, D. R. (2004). Rising atmospheric carbon dioxide: plants FACE the future. *Annu. Rev. Plant Biol.* 55, 591–628. doi: 10.1146/annurev.arplant.55.031903.141610
- Lüttge, U. (1988). Day-night changes of citric-acid levels in crassulacean acid metabolism: phenomenon and ecophysiological significance. *Plant Cell Environ.* 11, 445–451. doi: 10.1111/j.1365-3040.1988.tb01782.x
- Maberly, S. C., and Gontero, B. (2017). Ecological imperatives for aquatic CO<sub>2</sub>-concentrating mechanisms. *J. Exp. Bot.* 68, 3797–3814. doi: 10.1093/jxb/erx201
- Maberly, S. C., and Gontero, B. (2018). "Trade-offs and synergies in the structural and functional characteristics of leaves photosynthesizing in aquatic environments," in *The Leaf: A Platform for Performing Photosynthesis*. Eds. W.W.A.III and I. Terashima (New York: Springer), 307–343.
- Maberly, S., and Madsen, T. V. (1998). Affinity for CO<sub>2</sub> in relation to the ability of freshwater macrophytes to use HCO<sub>3</sub><sup>-</sup>. *Funct. Ecol.* 12, 99–106. doi: 10.1046/j.1365-2435.1998.00172.x
- Maberly, S. C., and Madsen, T. V. (2002). Freshwater angiosperm carbon concentrating mechanisms: processes and patterns. *Funct. Plant Biol.* 29, 393–405. doi: 10.1071/pp01187
- Maberly, S., and Spence, D. (1983). Photosynthetic inorganic carbon use by freshwater plants. *J. Ecol.* 71, 705–724. doi: 10.2307/2259587
- Maberly, S. C. (1996). Diel, episodic and seasonal changes in pH and concentrations of inorganic carbon in a productive lake. *Freshwater Biol.* 35, 579–598. doi: 10.1111/j.1365-2427.1996.tb01770.x
- Madsen, T. V., and Maberly, S. C. (1991). Diurnal variation in light and carbon limitation of photosynthesis by two species of submerged freshwater macrophyte with a differential ability to use bicarbonate. *Freshwater Biol.* 26, 175–187. doi: 10.1111/j.1365-2427.1991.tb01727.x
- Madsen, T. V., and Sand-Jensen, K. (1987). Photosynthetic capacity, bicarbonate affinity and growth of *Elodea canadensis* exposed to different concentrations of inorganic carbon. *OIKOS* 50, 176–182. doi: 10.2307/3565998
- Madsen, T. V., and Sand-Jensen, K. (1991). Photosynthetic carbon assimilation in aquatic macrophytes. *Aquat. Bot.* 41, 5–40. doi: 10.1016/0304-3770(91)90037-6
- Madsen, T. V., Olesen, B., and Bagger, J. (2002). Carbon acquisition and carbon dynamics by aquatic isoetids. *Aquat. Bot.* 73, 351–371. doi: 10.1016/S0304-3770(02)00030-X
- Magnin, N. C., Cooley, B. A., Reiskind, J. B., and Bowes, G. (1997). Regulation and localization of key enzymes during the induction of Kranz-less, C<sub>4</sub>-type photosynthesis in *Hydrilla verticillata*. *Plant Physiol.* 115, 1681–1689. doi: 10.1104/pp.115.4.1681
- Miszalski, Z., Kornas, A., Rozpądek, P., Fischer-Schliebs, E., and Lüttge, U. (2013). Independent fluctuations of malate and citrate in the CAM species *Clusia hilariana* Schltdl. under low light and high light in relation to photoprotection. *J. Plant Physiol.* 170, 453–458. doi: 10.1016/j.jplph.2012.11.005
- Murphy, L. R., Barroca, J., Franceschi, V. R., Lee, R., Roalson, E. H., Edwards, G. E., et al. (2007). Diversity and plasticity of C<sub>4</sub> photosynthesis in *Eleocharis* (Cyperaceae). *Funct. Plant Biol.* 34, 571–580. doi: 10.1071/fp06296
- Newman, J. R., and Raven, J. A. (1995). Photosynthetic carbon assimilation by *Crassula helmsii*. *Oecologia* 101, 494–499. doi: 10.1007/BF00329429
- Pedersen, O., Rich, S. M., Pulido, C., Cawthray, G. R., and Colmer, T. D. (2011). Crassulacean acid metabolism enhances underwater photosynthesis and diminishes photorespiration in the aquatic plant *Isoetes australis*. *New Phytol.* 190, 332–339. doi: 10.1111/j.1469-8137.2010.03522.x
- Pedersen, O., Colmer, T. D., and Sand-Jensen, K. (2013). Underwater photosynthesis of submerged plants—recent advances and methods. *Front. Plant Sci.* 4:140. doi: 10.3389/fpls.2013.00140
- Pritchard, S. G., Rogers, H. H., Prior, S. A., and Peterson, C. M. (1999). Elevated CO<sub>2</sub> and plant structure: a review. *Global. Change Biol.* 5, 807–837. doi: 10.1046/j.1365-2486.1999.00268.x
- Radoglou, K., and Jarvis, P. (1990). Effects of CO<sub>2</sub> enrichment on four poplar clones. I. Growth and leaf anatomy. *Ann. Bot.* 65, 617–626. doi: 10.1093/oxfordjournals.aob.a087978
- Radoglou, K., and Jarvis, P. (1992). The effects of CO<sub>2</sub> enrichment and nutrient supply on growth morphology and anatomy of *Phaseolus vulgaris* L. seedlings. *Ann. Bot.* 70, 245–256. doi: 10.1093/oxfordjournals.aob.a088466
- Robe, W., and Griffiths, H. (2000). Physiological and photosynthetic plasticity in the amphibious, freshwater plant, *Littorella uniflora*, during the transition from aquatic to dry terrestrial environments. *Plant Cell Environ.* 23, 1041–1054. doi: 10.1046/j.1365-3040.2000.00615.x
- Rudall, P. J., and Knowles, E. V. (2013). Ultrastructure of stomatal development in early-divergent angiosperms reveals contrasting patterning and pre-patterning. *Ann. Bot.* 112, 1031–1043. doi: 10.1093/aob/mct169
- Sand-Jensen, K., and Frost-Christensen, H. (1998). Photosynthesis of amphibious and obligately submerged plants in CO<sub>2</sub>-rich lowland streams. *Oecologia* 117, 31–39. doi: 10.1007/s004420050628
- Sand-Jensen, K., Pedersen, M. F., and Nielsen, S. L. (1992). Photosynthetic use of inorganic carbon among primary and secondary water plants in streams. *Freshwater Biol.* 27, 283–293. doi: 10.1111/j.1365-2427.1992.tb00540.x
- Schippers, P., Mooij, W. M., Vermaat, J. E., and de Klein, J. (2004). The effect of atmospheric carbon dioxide elevation on plant growth in freshwater ecosystems. *Ecosystems* 7, 63–74. doi: 10.1007/s10021-003-0195-z
- Sculthorpe, C. D. (1967). *The biology of aquatic vascular plants* (London: Edward Arnold).
- Shao, H., Gontero, B., Maberly, S. C., Jiang, H. S., Cao, Y., Li, W., et al. (2017). Responses of *Ottelia alismoides*, an aquatic plant with three CCMs, to variable CO<sub>2</sub> and light. *J. Exp. Bot.* 68, 3985–3995. doi: 10.1093/jxb/erx064
- Thomas, J. F., and Harvey, C. N. (1983). Leaf anatomy of four species grown under continuous CO<sub>2</sub> enrichment. *Bot. Gaz.* 144, 303–309. doi: 10.1086/337377
- Upreti, D., Dwivedi, N., Mohan, R., and Paswan, G. (2001). Effect of elevated CO<sub>2</sub> concentration on leaf structure of *Brassica juncea* under water stress. *Biol. Plantarum* 44, 149–152. doi: 10.1023/A:1017959429783
- Wang, H. X., Guo, J. L., Li, Z. M., Yu, Y. H., and Zhang, Y. H. (2019). Characterization of the complete chloroplast genome of an endangered aquatic macrophyte, *Ottelia cordata* (Hydrocharitaceae). *Mitochondrial DNA B* 4, 1839–1840. doi: 10.1080/23802359.2019.1612719
- Watling, J. R., Press, M. C., and Quick, W. P. (2000). Elevated CO<sub>2</sub> induces biochemical and ultrastructural changes in leaves of the C<sub>4</sub> cereal *sorghum*. *Plant Physiol.* 123, 1143–1152. doi: 10.1104/pp.123.3.1143
- Webb, D., Rattray, M., and Brown, J. (1988). A preliminary survey for crassulacean acid metabolism (CAM) in submerged aquatic macrophytes in New Zealand. *New Zeal. J. Mar. Fresh.* 22, 231–235. doi: 10.1080/00288330.1988.9516295

- Winter, K., and Smith, J. (1996). "Crassulacean acid metabolism: current status and perspectives," in *Crassulacean Acid Metabolism, Biochemistry, Ecophysiology and Evolution*. Eds. K. Winter and J. A. C. Smith (New York: Springer), 389–426.
- Yin, L., Li, W., Madsen, T. V., Maberly, S. C., and Bowes, G. (2017). Photosynthetic inorganic carbon acquisition in 30 freshwater macrophytes. *Aquat. Bot.* 140, 48–54. doi: 10.1016/j.aquabot.2016.05.002
- Zhang, Y., Yin, L., Jiang, H. S., Li, W., Gontero, B., and Maberly, S. C. (2014). Biochemical and biophysical CO<sub>2</sub> concentrating mechanisms in two species of freshwater macrophyte within the genus *Ottelia* (Hydrocharitaceae). *Photosynth. Res.* 121, 285–297. doi: 10.1007/s11120-013-9950-y

**Conflict of Interest:** The authors declare that the research was conducted in the absence of any commercial or financial relationships that could be construed as a potential conflict of interest.

Copyright © 2020 Huang, Han, Xing and Li. This is an open-access article distributed under the terms of the Creative Commons Attribution License (CC BY). The use, distribution or reproduction in other forums is permitted, provided the original author(s) and the copyright owner(s) are credited and that the original publication in this journal is cited, in accordance with accepted academic practice. No use, distribution or reproduction is permitted which does not comply with these terms.