



# Water Transfer Between Bamboo Culms in the Period of Sprouting

Dongming Fang<sup>1,2\*</sup>, Tingting Mei<sup>1,2</sup>, Alexander Röhl<sup>2</sup> and Dirk Hölscher<sup>2</sup>

<sup>1</sup> State Key Laboratory of Subtropical Silviculture, Zhejiang A&F University, Lin'an, China, <sup>2</sup> Tropical Silviculture and Forest Ecology, University of Göttingen, Göttingen, Germany

Bamboo culms are connected to neighboring culms via rhizomes, which enable resource exchange between culms. We assessed water transfer between established and neighboring, freshly sprouted culms by thermal dissipation probes (TDP) inserted into culms and the connecting rhizome. During the early phase of sprouting, highest sap flux densities in freshly sprouted culms were observed at night, whereas neighboring established culms had high sap flux densities during daytime. After leaf flushing on freshly sprouted culms, the nighttime peaks disappeared and culms switched to the diurnal sap flux patterns with daytime maxima as observed in established culms. TDP in rhizomes indicated water flowing from the established to the freshly sprouted culms. When the established culms of a clump were cut, freshly sprouted culms without leaves reduced sap flux densities rates by 79%. Our findings thus suggest that bamboos exchange water via rhizomes and that nighttime fluxes are highly important for the support of freshly sprouted culms. The (water) resource support may facilitate the very fast growth of the bamboo shoots, and enable the colonizing of new places.

## OPEN ACCESS

### Edited by:

Boris Rewald,  
University of Natural Resources  
and Life Sciences, Austria

### Reviewed by:

Johann Rohwer,  
Stellenbosch University, South Africa  
Keisuke Nagai,  
Nagoya University, Japan

### \*Correspondence:

Dongming Fang  
dmfang@zafu.edu.cn

### Specialty section:

This article was submitted to  
Functional Plant Ecology,  
a section of the journal  
Frontiers in Plant Science

**Received:** 31 March 2019

**Accepted:** 29 May 2019

**Published:** 12 June 2019

### Citation:

Fang D, Mei T, Röhl A and  
Hölscher D (2019) Water Transfer  
Between Bamboo Culms in the Period  
of Sprouting. *Front. Plant Sci.* 10:786.  
doi: 10.3389/fpls.2019.00786

**Keywords:** bamboo shoots, nighttime flux, rhizome, sap flux, water exchange

## INTRODUCTION

Plants with connected roots or rhizomes have the possibility to share resources with each other directly (Baret and DesRochers, 2011). Resource exchange among connected individuals, referred to as “physiological integration” (Lau and Young, 1988; Caraco and Kelly, 1991; Kroon et al., 1996), has been intensively studied and seems to be relatively widespread in herbaceous species (Alpert and Mooney, 1986; Lau and Young, 1988; Chapman et al., 1992; Kroon et al., 1996; Stueffer et al., 1996). In tree species such as lodgepole pine (Fraser et al., 2006), aspen (Baret and DesRochers, 2011), and poplar (Adonsou et al., 2016) resource exchange via connected roots was also observed. The direction of transfer and the transferred amounts depended on the status of the connected plants; e.g., plants that suffered drought received water from watered neighbors, in which the amount of transferred water was related to the leaf water potential or leaf area of the connected plants (Kroon et al., 1996; Adonsou et al., 2016). Such resource integration was shown to be of critical importance for new ramets grown from the parental root systems of aspen (*Populus tremuloides*) (Baret and DesRochers, 2011).

As rhizomatous monocot species, bamboos are well known for their fast expansion via their underground rhizome system as well as the rapid growth of freshly sprouted culms (Liese and Köhl, 2015). After emerging from the soil, bamboo culms can attain their full heights within 1 or 2 months, with maximum growth rates up to 10–80 cm per day (Liese and Köhl, 2015;

Song et al., 2016). Some species may even grow up to 1 m per day during the fast growing phase (Ueda, 1960). This leads to the question of where developing culms, with no leaves and only few roots, get the resources to sustain such growth rates. Important mechanisms include nutrient storage in the rhizome as well as resource translocation from connected mature culms (Li et al., 1998a,b; Liese and Köhl, 2015). A study on Moso bamboo (*Phyllostachys pubescens*) revealed that the content of non-structural carbohydrates in mature culms declined substantially during the “explosive growth” period of neighboring, young bamboo shoots due to the translocation of carbohydrates from mature to young culms via the underground rhizomes (Song et al., 2016). Applying deuterium tracing on culms in a clump of *Bambusa blumeana*, Dierick et al. (2010) found higher deuterium concentration than the background values in neighboring culms close to the labeled culms. This elevated deuterium concentration was thought to imply water transfer among the culms via the rhizomes. In another study on Moso bamboo all rhizomes of several culms were cut and the culms thus disconnected from the clump’s rhizome network. The culms with cut rhizomes subsequently consumed 20% less water than neighboring culms with intact rhizomes (Zhao et al., 2016).

Our study was implemented on three clumpy bamboo species during the phase of vegetative sprouting of fresh culms. The aim was to assess water transfer among established culms and sprouting culms with thermal dissipation probes (TDP) and a cutting experiment.

## MATERIALS AND METHODS

### Study Site and Bamboos

The study was conducted in a bamboo garden in Bogor, Indonesia (6°33′40″ S, 106°43′27″ E, 182 m asl). Rainfall in Bogor is 3978 mm per year and the mean annual temperature is 25.6°C (Van Den Besselaar et al., 2014). The months between October and May are particularly wet. During this wet period, new shoots of bamboos sprout from the soil and grow to their full height. This study was conducted in clumps of *B. vulgaris* and *Gigantochloa apus*; culm heights were  $17.9 \pm 0.8$  m (mean  $\pm$  SD) and  $16.2 \pm 2.7$  m and culm diameters at breast height were  $7.0 \pm 0.4$  cm and  $7.9 \pm 1.1$  cm, respectively. In the clumps, established culms and freshly sprouted culms were connected via rhizomes of 30 to 50 cm length. Unlike the hollow culms of the bamboos, the rhizomes are solid. During the nearly 4-month experimental period from December 2012 to March 2013, fresh culms sprouted and grew to their full height. Culm growth was slowed down during the period of leaf development.

### Sap Flux in Culms and the Rhizome, and Measurements of Radiation

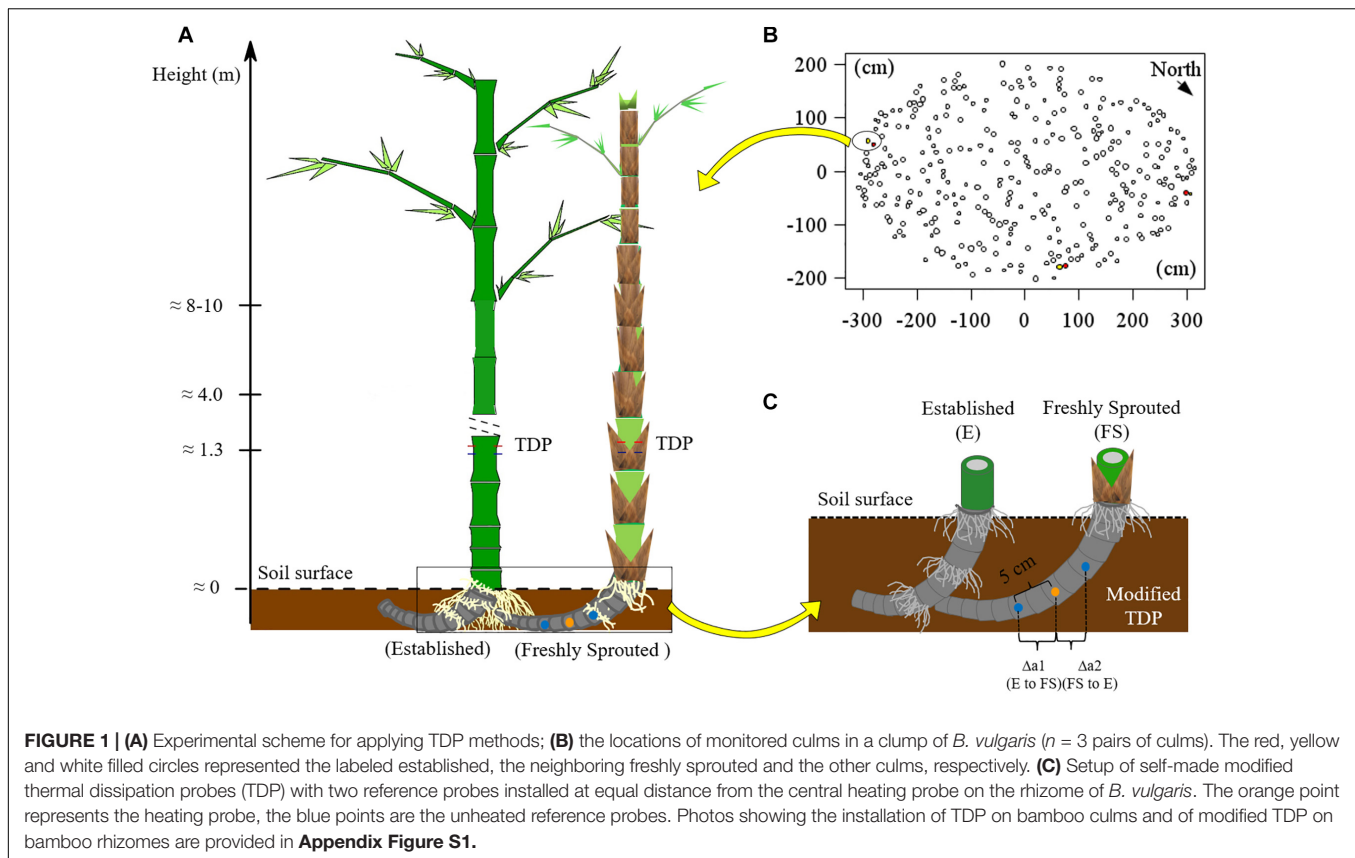
For *B. vulgaris*, three pairs of established and attached freshly sprouted culms were selected at the culm edge (Figures 1A,B). The connection between established and freshly sprouted culms was verified by partially removing the topsoil and directly observing the rhizomes. Sap flux densities ( $J_s$ ,  $\text{g cm}^{-2} \text{h}^{-1}$ ) in bamboo culms were monitored with TDP (Granier, 1985). Each

TDP consists of two probes – a heated probe and a reference one, and a thermal couple is built into each probe to detect thermal dynamic. The temperature around the heated probe is negatively correlated with  $J_s$ . The temperature differential between heated and reference probe were used for monitoring and calculating  $J_s$  (Lu et al., 2004). On each studied bamboo culm, three pairs of TDP with 1 cm sensor length were inserted into the culm walls at breast height (Figure 1A and Appendix Figure S1A). The heated probe, powered by 120 mA, was installed 10 cm above the reference probe. Voltage signals were recorded every 30 s and averaged every 10 min (CR1000 data loggers and AM16/32 multiplexer, Campbell Scientific Inc., United States).  $J_s$  of established culms was first calculated based on Granier’s equation (Granier, 1985), and  $J_s$  was further corrected by multiplying it with species-specific calibration parameters (SSCP; 2.79 for *B. vulgaris*; 3.32 for *G. apus*; Mei et al., 2016).

$$J_s = 119 \times \left( \frac{\Delta T_{max} - \Delta T}{\Delta T} \right)^{1.231} \times 0.36 \times SSCP$$

Where  $\Delta T$  is the temperature difference between the heated and reference probe and  $\Delta T_{max}$  is the maximal  $\Delta T$  within a given day;  $\Delta T_{max}$  usually occurs during the night and is used to set zero-flux conditions ( $J_s = 0$ ). The model parameters 119 and 1.231 were empirically derived by Granier (1985). These original parameters were found to substantially underestimate  $J_s$  in the bamboo species *B. vulgaris* and *G. apus* (Mei et al., 2016), which is why the mentioned SSCP were applied.

To measure  $J_s$  and detect directions of sap flow in the rhizome between established and freshly sprouted culms, we built self-made, modified TDP sensors with three probes instead of two. The modified TDP consisted of one central heating and two unheated reference probes. The heating probe was installed at the mid-point of the rhizome between the culms, and the two reference probes were installed at 5 cm distance from the heated probe, one on each side (Figure 1C and Appendix Figure S1B). The temperature differences between each reference probe and the heating probe were recorded, stored and used to calculate rhizome  $J_s$  in the same way as described above for the “standard” TDP sensors. The directions of sap flow in rhizome were determined by comparing the two derived voltage signals, and the reference probe with the lower signal value was assigned the downstream position of sap flow. This was based on the assumption that sap flow brought the heat energy to the downstream sensor and that this heat would increase the temperature of the downstream sensor and thus a smaller temperature difference between the heating and the downstream reference probe than that between the heating and the upstream reference probe. In this case, the signal value from the downstream sensor was smaller than that from the upstream sensor. To test this assumption, we simulated the heat field around the heating and the two reference sensors under different sap flow densities with the ANSYS model (CFX 17.0, ANSYS Inc., Pennsylvania, United States; Mei et al., 2017), and the simulated results confirmed our initial assumption (Appendix Figures S2–S4).



Within 600 meters of the *B. vulgaris* site, we set up a micrometeorological station. A pyranometer (CS300, Campbell Scientific Inc., United States) was installed to measure radiation. The data was stored on a CR1000 data logger with the same recording intervals as described for the TDP measurements.

## Cutting Experiment

Additionally to directly monitoring the water transfer via rhizome with modified TDP, a cutting experiment was implemented to explore the influence of established culms on the water status of freshly sprouted culms. Two clumps of *G. apus* in a bamboo garden were selected, one for the cutting experiment and the other as a control. Both clumps had a similar density of culms ( $\sim 18$  culms  $m^{-2}$ ). All established culms in the cutting experiment clump were removed, so that only freshly sprouted culms remained. In the control clump, no culms were cut.

From 29 Dec 2012 to 10 Feb 2013,  $J_s$  of five freshly sprouted culms in the cutting experiment clump was monitored by TDP as described in section 2.2. The culms had a height of around 2 m at the beginning of the experiment and had no leaves. The monitoring stopped after about 40 days, when the culms were collapsing. Until then, the culms had reached approx. 5 – 8 m in height without any leaf development. In the control clump, we monitored  $J_s$  of five established culms but not freshly sprouted ones. To estimate the  $J_s$  of freshly sprouted culms in the *G. apus* control clump, we used an indirect assessment involving

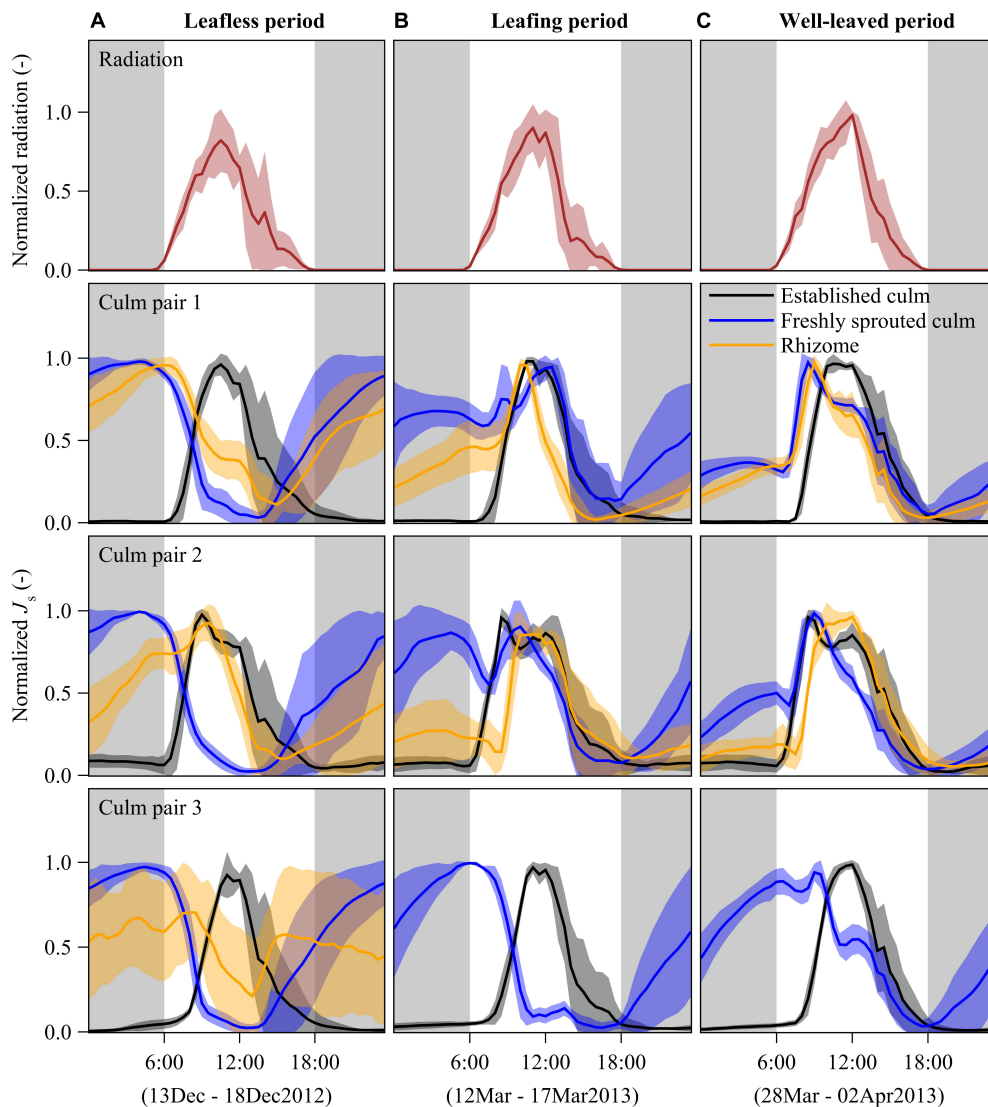
a nearby long-term monitoring *B. vulgaris* clump. There, we measured  $J_s$  of both established and freshly sprouted culms. We found a significant linear relationship (slope = 0.63, with no intercept) between  $J_s$  of established culms in the *B. vulgaris* and *G. apus* control clumps ( $R^2 = 0.9$ ;  $P < 0.01$ ; **Appendix Figure S5**). We assume that the freshly sprouted culms of the two species have the same relationship as established culms and estimated  $J_s$  of freshly sprouted culms in the control *G. apus* clump by multiplying the observed values of freshly sprouted *B. vulgaris* by 0.63 (**Appendix Figure S5**).

## Statistics

To compare the patterns of  $J_s$  among the rhizome, established and freshly sprouted culms, we normalized the half-hourly  $J_s$  of each day (by fitting them to a range from 0 to 1) and plotted average hourly values of six sunny days (**Figure 2**). To further explore the relative change between established and freshly sprouted culms, we further plotted the normalized  $J_s$  values of newly sprouted culms directly versus the normalized  $J_s$  of established culms (**Figure 3**).

To explore the contribution of nighttime to whole-day sap flow, we calculated the ratio between nighttime (18:00 to 6:00 in next morning) and whole-day accumulated sap flow (24 h) of established and freshly sprouted culms and of the rhizomes connecting them (**Figure 4**).

To compare the patterns of  $J_s$  between the cutting and control freshly sprouted culms in the cutting experiment, we averaged



**FIGURE 2** | Diurnal patterns of half-hourly radiation (first row) and sap flux densities ( $J_s$ ) of *B. vulgaris* (rows 2–4) during leafless (A), leafing (B), and well-leaved period (C) of freshly sprouted culms. The presented lines are means of 6 days of measurements for each of the three periods; the error corridors around the lines indicate standard deviations. For each freshly sprouted culm,  $J_s$  is also displayed for the neighboring established culm and the connecting rhizome. Gray background indicates nighttime (18:00 to 6:00). Due to sensor malfunctioning, rhizome data for culm pair three is missing and thus not shown in panels B,C.

half-hourly  $J_s$  of 5 culms in each clump, and normalized the pooled data of both clumps by selecting one common hourly maximum (set to one) and minimum (set to zero) within three consecutive days of measurements (Figure 5).

All data analyses and plotting were performed with SAS 9.4 (SAS Institute Inc., Cary, NC, United States).

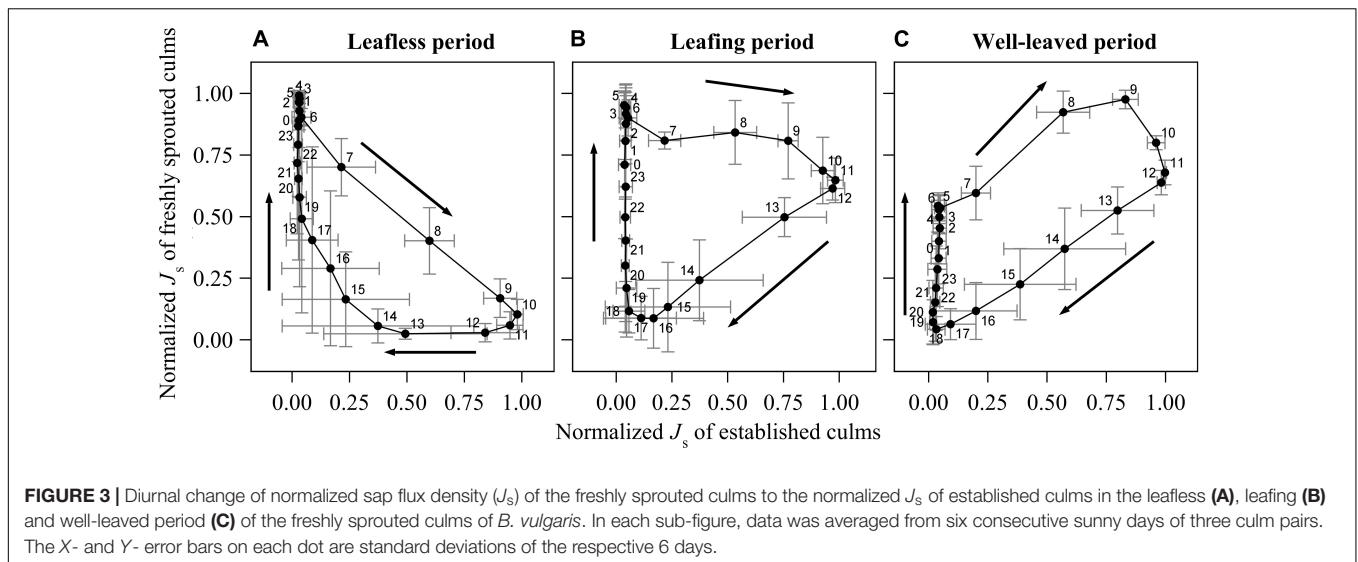
## RESULTS

### Diurnal Patterns of Sap Flux Densities in Culms and Rhizome

In established culms, sap flux density ( $J_s$ ) showed a typical diurnal pattern corresponding approximately to the diurnal patterns

of radiation. With rising radiation in the morning,  $J_s$  started to increase until reaching its peak values at around midday, gradually decreased in the afternoon and remained close to zero during the night (Figure 2).

In freshly sprouted culms,  $J_s$  switched from a day-night reversal mode through a transition mode to a similar diurnal pattern as that of established culms over the leafless, leafing, and well-leaved periods, respectively. In the leafless period, nighttime sap flux dominated.  $J_s$  increased from near zero at sunset time to its peak around sunrise. The nighttime-dominated pattern switched gradually to the normal daytime-dominated pattern after leaves developed. In the well-leaved period, 3 months after sprouting, maximum  $J_s$  was higher during the daytime than during the nighttime (Figure 2).



In rhizomes, there was substantial  $J_s$  at night during times of high  $J_s$  in freshly sprouted culms in the leafless period. During the daytime, the  $J_s$  in rhizomes differed among the three culm pairs (Figure 2A), which may be attributed to different culm elongation stages. Once the leaves of young culms were well established (Figure 2B),  $J_s$  patterns were more synchronized in rhizomes, established and young bamboo culms, usually with peaks between 9 am and midday. Based on observed temperature differences as measured with modified TDPs (Appendix Figure S2) and results from simulations (Appendix Figures S3, S4), we infer that the net sap flow in rhizomes was mainly from the established culms to the freshly sprouted culms in both the leafless and the well-leaved observation period. However, we cannot exclude the possibility of coexisting bidirectional sap flow in rhizomes.

### Comparison Between Freshly Sprouted Culms and Established Culms

During the leafless period of freshly sprouted culms, they had near maximum rates of normalized hourly sap flux ( $J_{s\_max}$ ) from about 10 pm to 6 am, when  $J_s$  of established culms was near its minimum ( $<10\%$  of  $J_{s\_max}$ ) (Figure 3A). Sap flux in leafless young culms sharply decreased as soon as sap flux in established culms increased in the morning.  $J_{s\_max}$  in established culms coincided with near minimum values in freshly sprouted culms (9 am to 12 pm).  $J_s$  in freshly sprouted culms increased back to 25% of its daily maximum as soon as  $J_s$  in established culms dropped below 20% of  $J_{s\_max}$  (around 4 pm).

In freshly sprouted culms in the transition period (leafing),  $J_{s\_max}$  was also observed in the early morning hours, but the subsequent decline in  $J_s$  was much slower;  $J_s$  was still around 70% of  $J_{s\_max}$  at noon, when  $J_s$  in established culms was at its highest (Figure 3B). Over the afternoon hours (12 to 6 pm),  $J_s$  in leafing young culms declined to near zero. It subsequently gradually increased until the early morning hour maximum; during this time,  $J_s$  of established culms remained below 10% of  $J_{s\_max}$ .

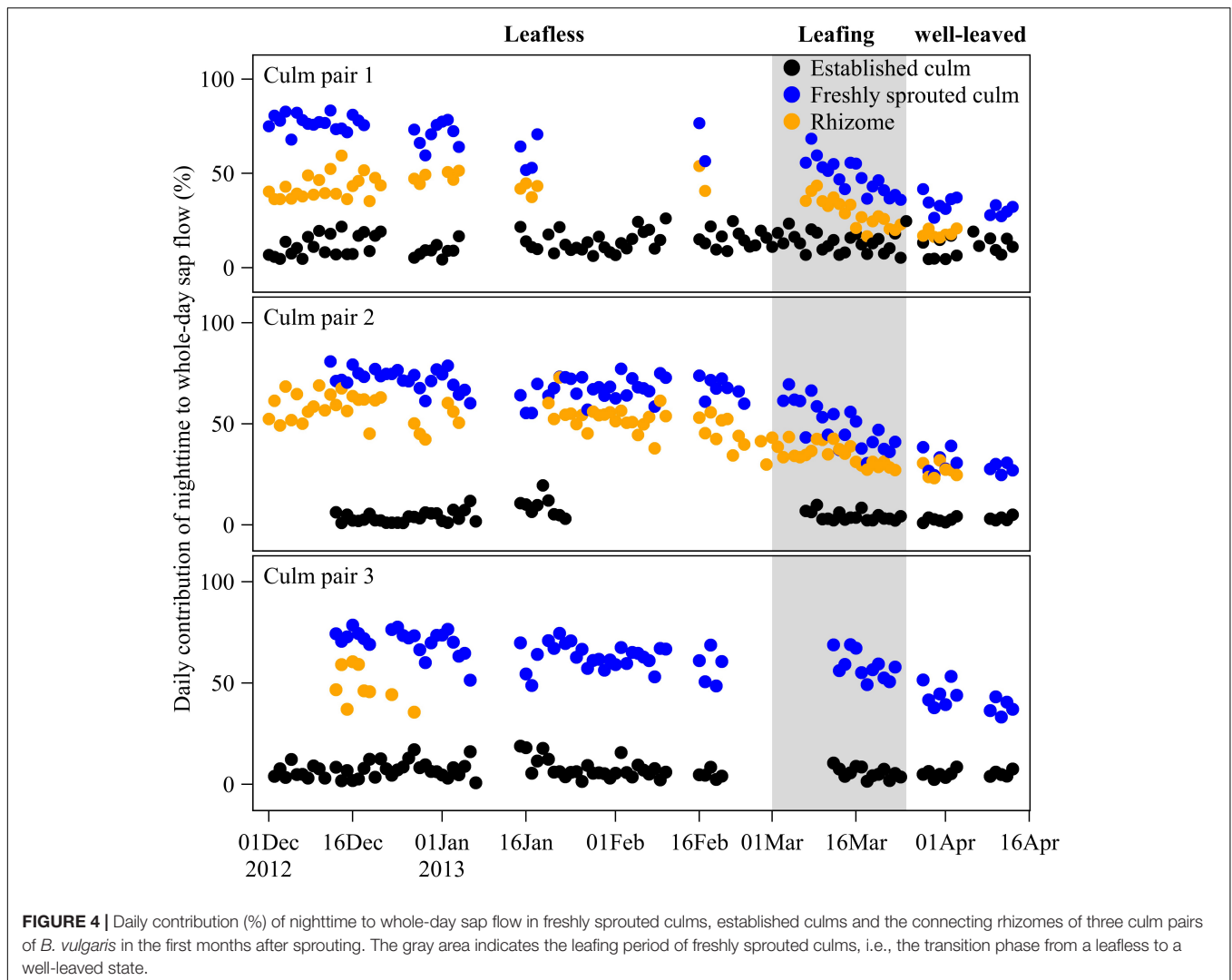
In well-leaved freshly sprouted culms, substantial  $J_s$  as well as  $J_{s\_max}$  were observed between 5 am and noon, thus coinciding with  $J_{s\_max}$  in established culms. In the afternoon,  $J_s$  in the young culms gradually drops to near minimum (around 6 pm). However, in contrast to established culms (with marginal  $J_s$  between 6 pm and 6 am),  $J_s$  in well-leaved freshly sprouted culms starts to slowly and consistently rise again after sunset, reaching about 60% of  $J_{s\_max}$  until sunrise (Figure 3C).

### Contribution of Nighttime to Whole-Day Sap Flow

Over the leafless, leafing, and well-leaved periods of newly sprouted culms, nighttime accumulated  $J_s$  of neighboring established culms remained at  $8 \pm 1\%$  of whole-day accumulated  $J_s$  (Figure 4). In contrast, the contribution of nighttime to whole-day accumulated  $J_s$  of freshly sprouted culms decreased from  $69 \pm 3\%$  to  $52 \pm 6\%$  to  $35 \pm 6\%$  over the three periods (Figure 4). Nighttime accumulated  $J_s$  in rhizomes accounted for  $49 \pm 5\%$ ,  $32 \pm 4\%$ , and  $23 \pm 6\%$  of whole-day accumulated  $J_s$  over the three periods (Figure 4). Even though the nighttime contributions of rhizomes were thus consistently smaller than for freshly sprouted culms, they showed a similar decreasing trend over the three periods (Figure 4).

### Influence of Cutting Established Culms on Freshly Sprouted Culms

After removing all established culms in a *G. apus* clump, daily sap flux of freshly sprouted leafless culms was estimated to be 79% lower than the corresponding values of a *G. apus* clump where established culms had not been removed (Figure 5); the latter was assessed indirectly by applying the ratio of 0.63 between  $J_s$  of *G. apus* and *B. vulgaris* (Appendix Figure S5). Taking into account uncertainties in the ratio (range: 0.55 to 0.84), the corresponding relative difference of  $J_s$  between cutting and control clump is between 76 and 84%.

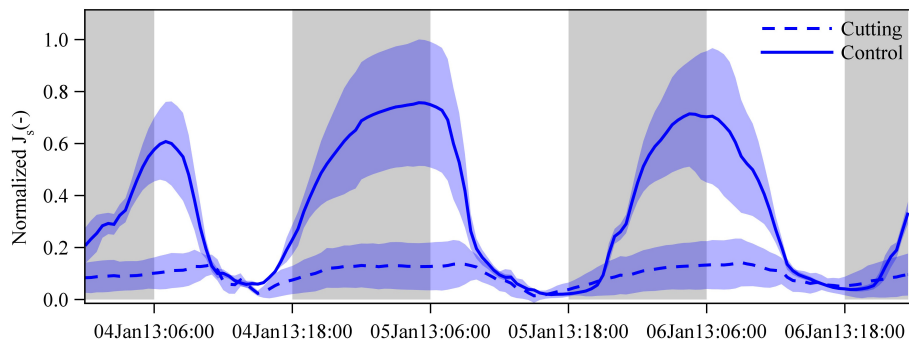


## DISCUSSION

It is generally accepted that micrometeorological factors such as solar radiation and vapor pressure deficit are the main drivers of day-to-day fluctuations in tree water use and that limited soil water availability can constrain tree water use (O'Brien et al., 2004; Kume et al., 2007). However, water use patterns may vary under special circumstances, e.g., in freshly sprouted leafless bamboo culms. In our study, we found that diurnal  $J_s$  patterns in freshly sprouted bamboo culms changed from the leafless to the well-leaved period (Figures 2, 3). During the leafless period, diurnal  $J_s$  patterns in freshly sprouted bamboo culms typically differed from patterns in neighboring established culms, i.e., freshly sprouted culms had high sap flux during the night and low sap flux during the daytime. The nighttime maxima imply that the  $J_s$  pattern of freshly sprouted bamboo culms are not always controlled by the classic micrometeorological drivers, particularly during the early growing stages when culms are still without leaves and branches. The neighboring established culms most likely play an important supportive role for the freshly sprouted

culms (Fraser et al., 2006; Liese and Köhl, 2015). As such, when all the established culms in a *G. apus* clump in our study were cut,  $J_s$  in neighboring, newly sprouted culms was reduced by 79% (Figure 5).

Tentatively applying the available adjusted  $J_s$  formula as specified for established bamboo culms (Mei et al., 2016) to the rhizomes and freshly sprouted culms in our study suggests that during the first 4 months after emerging, 48% of the daily sap flow of freshly sprouted culms was provided by established culms via the rhizomes (Appendix Figure S6). It may well be that freshly sprouted culms not only receive water from the nearest directly connected established culm, but from several sources interconnected via the underground rhizome network. Generally, the dependency of freshly sprouted culms on established culms may vary with their distances to established culms; as such, a previous study on water transfer between poplar ramets found that ramets benefited more from proximal root connection than from distal ones (Adonsou et al., 2016). The current elongation stage of a given newly sprouted culm may further impact its dependency on established



**FIGURE 5 |** Normalized sap flux densities ( $J_s$ ) in freshly sprouted culms of *G. apus* in cutting (dashed lines) and control clumps (solid line). In the cutting experiment clump, all established culms were removed, leaving only freshly sprouted culms. Due to missing measured data, we estimated  $J_s$  of freshly sprouted *G. apus* culms in the control clump by multiplying  $J_s$  of freshly sprouted *B. vulgaris* culms in a nearby clump by a ratio of 0.63 (see section “Materials and Methods” and **Appendix Figure S5**). Averaged data from 3 and 5 culms for the control and cutting clump, respectively, normalized by setting the hourly maximum and minimum of both datasets to one and zero. Lines represent means and error corridors around the lines indicate standard deviations.

neighbors and thus the patterns and amounts of water it receives from donor culms.

Despite some previous indications of water transfer via rhizomes in bamboos (Dierick et al., 2010; Zhao et al., 2016), the mechanisms remain unclear. As such, the possible trade-offs between daytime sap flow of established culms and nighttime sap flow of freshly sprouted culms as well as the driving forces leading to the water transfer from the established donor culms to meet the water demand of the dependent freshly sprouted culms yet remain to be studied. Our results indicate that water supply from established donor culms to leafless freshly sprouted culms was reduced during the daytime, when the transpiration demand of established donor culms was high (more than 90% of whole-day transpiration; **Figures 2, 3**). In contrast, water transfer to leafless freshly sprouted culms was high during the nighttime, when transpiration of established culms is marginal. Such sap flow patterns indicate competition for water within bamboo clumps, particularly during the phenological period of bamboo sprouting.

According to the source-sink theory, resource translocation among connected herbaceous plants depends on resource availability; the resource is transferred from resource-abundant regions (source) to resource-scarce regions (sink; Marshall, 1996). The theory could explain the opposite water use patterns observed for freshly sprouted and established bamboo culms in our study. The established bamboo culms transpired a lot of water during the daytime, probably also retrieving water stored in the culms (Yang et al., 2015; Mei et al., 2016). During the nighttime, along with the largely reduced transpiration and the refilling of the culm water storage via root pressure mechanisms (Cao et al., 2012; Yang et al., 2015), water demand in established culms is largely reduced, while demand for water in freshly sprouted culms become relatively higher than in the established culms. Such resource allocation relies largely on resource availability of the donor individuals, which can be simulated with models (Caraco and Kelly, 1991) and which has previously been observed for several tree species (Fraser et al., 2006; Baret and DesRochers, 2011; Adonsou et al., 2016) and herbaceous species (Alpert and Mooney, 1986; Lau and Young, 1988; Chapman et al., 1992;

Kroon et al., 1996; Stueffer et al., 1996; Wang Z. et al., 2011; Zhang et al., 2012). The dependency of freshly sprouted culms on established culms was largely relieved after they had fully developed leaves (**Figures 2B,C**). However, some water transfer among the young culms and the interconnected established culms continued for several weeks after leaf flushing. Substantial resource translocation could potentially be reactivated at a later time, e.g., in case of resource stress of individual culms (Marshall, 1996). For example, differences in soil water availability, which have been reported even for small patches, could be balanced via interconnected rhizome networks (Hutchings and Wijesinghe, 1997; Wang Y. et al., 2011; Zhang et al., 2012).

Another finding is that for the first 4 months after emergence, freshly sprouted culms kept active nighttime sap flow regardless of whether they were with or without leaves, contributing 69, 52, and 35% of total daily sap flow over the leafless, leafing and well-leaved periods, respectively (**Figure 4**). Reduced competitive water uptake from rhizomes by the established culms during the night could be a potential reason, while another could include carbohydrate translocation from the established culms to freshly sprouted culms during the night. It has been observed that non-structural carbohydrates in established culms were largely reduced during the period of sprouting of neighboring shoots, and it was assumed that they had been transferred into the freshly sprouted culms (Song et al., 2016). Carbohydrate transport from the source (usually the leaves) to the sink (e.g., rhizome or freshly sprouted culm) is believed to be driven by hydrostatic pressure gradients in the phloem (Münch, 1930). In the carbohydrate transport process, the phloem has to withdraw water from the surrounding tissues (usually the xylem), which usually equilibrates the water potential between the phloem and the surrounding tissues (Thompson and Holbrook, 2003; Hölttä et al., 2006). However, drawing water from the xylem is more difficult when the water potential in the xylem is more negative; carbohydrate transport in the phloem thus likely occurs during the nighttime, when xylem water potential is less negative (Hölttä et al., 2009; Savage et al., 2015). Without substantial transpiration demand and with the water storage refilling via

root pressure mechanisms, the less negative water potential in established culms during the night further promotes the phloem to draw water and transport carbohydrates to freshly sprouted culms. However, the underlying mechanisms for water movement from established culms to freshly sprouted culms as well as its relationship with carbohydrate translocation remain unclear and will need to be addressed in future studies.

## CONCLUSION

In the period of sprouting, young bamboo culms receive water resources from neighboring established culms via the underground rhizome network. The freshly sprouted culms show a high share of nighttime water fluxes. This resource support may facilitate the very fast growth of the bamboo shoots, and enable the colonizing of new places.

## DATA AVAILABILITY

The datasets generated for this study are available on request to the corresponding author.

## AUTHOR CONTRIBUTIONS

DF contributed to the experimental design, field installations, data analysis, and wrote and revised the manuscript. Particularly, DF conducted all the data analysis and figure-making, and wrote the preliminary draft of the manuscript. TM contributed to the experimental design, field installations, and revision for the

manuscript. AR contributed to the field installations and revision for the manuscript. DH contributed to the experimental design and revision for the manuscript.

## FUNDING

The study was funded by the German Research Foundation (DFG, code number: HO 2119 and CRC 990, A02). At the later stage of preparation to this manuscript, DF was supported by the State Key Laboratory of Subtropical Silviculture and received a scholarship from the China Scholarship Council (CSC).

## ACKNOWLEDGMENTS

The authors acknowledge the support from the Departments of Facility and Property, the Ecology Laboratory and the Agriculture Faculty at the Bogor Agricultural University (IPB). Prof. Dr. Hendrayanto from the IPB Faculty of Forestry is particularly thanked by the authors for his great support during the project. The contents of the manuscript partly overlap with the doctoral thesis of the first author (DF; <https://ediss.uni-goettingen.de/handle/11858/00-1735-0000-002E-E344-4>).

## SUPPLEMENTARY MATERIAL

The Supplementary Material for this article can be found online at: <https://www.frontiersin.org/articles/10.3389/fpls.2019.00786/full#supplementary-material>

## REFERENCES

- Adonsou, K. E., DesRochers, A., and Tremblay, F. (2016). Physiological integration of connected balsam poplar ramets. *Tree Physiol.* 36, 797–806. doi: 10.1093/treephys/tpv142
- Alpert, P., and Mooney, H. A. (1986). Resource sharing among ramets in the clonal herb. *Oecologia* 70, 227–233. doi: 10.1007/BF00379244
- Baret, M., and DesRochers, A. (2011). Root connections can trigger physiological responses to defoliation in nondefoliated aspen suckers. *Botany* 89, 753–761. doi: 10.1139/b11-062
- Cao, K. F., Yang, S. J., Zhang, Y. J., and Brodribb, T. J. (2012). The maximum height of grasses is determined by roots. *Ecol. Lett.* 15, 666–672. doi: 10.1111/j.1461-0248.2012.01783.x
- Caraco, T., and Kelly, C. K. (1991). On the adaptive value of physiological integration in colonial plants. *Ecology* 72, 81–93. doi: 10.2307/1938904
- Chapman, D. F., Robson, M. J., and Snaydon, R. W. (1992). Physiological integration in the clonal perennial herb *Trifolium repens* L. *Oecologia* 89, 338–347. doi: 10.1007/BF00317411
- Dierick, D., Hölscher, D., and Schwendenmann, L. (2010). Water use characteristics of a bamboo species () in the Philippines. *Agric. For. Meteorol.* 150, 1568–1578. doi: 10.1016/j.agrformet.2010.08.006
- Fraser, E. C., Lieffers, V. J., and Landhäuser, S. M. (2006). Carbohydrate transfer through root grafts to support shaded trees. *Tree Physiol.* 26, 1019–1023. doi: 10.1093/treephys/26.8.1019
- Granier, A. (1985). Une nouvelle méthode pour la mesure du flux de sève brute dans le tronc des arbres. *Ann. Sci. For.* 42, 193–200. doi: 10.1051/forest:19850204
- Hölttä, T., Mencuccini, M., and Nikinmaa, E. (2009). Linking phloem function to structure: analysis with a coupled xylem–phloem transport model. *J. Theor. Biol.* 259, 325–337. doi: 10.1016/j.jtbi.2009.03.039
- Hölttä, T., Vesala, T., Sevanto, S., Perämäki, M., and Nikinmaa, E. (2006). Modeling xylem and phloem water flows in trees according to cohesion theory and Münch hypothesis. *Trees* 20, 67–78. doi: 10.1007/s00468-005-0014-6
- Hutchings, M. J., and Wijesinghe, D. K. (1997). Patchy habitats, division of labour and growth dividends in clonal plants. *Trends Ecol. Evol.* 12, 390–394. doi: 10.1016/s0169-5347(97)87382-x
- Kroon, H., Franssen, B., Rheenen, J. W., Dijk, A., and Kreulen, R. (1996). High levels of inter-ramet water translocation in two rhizomatous *Carex* species, as quantified by deuterium labelling. *Oecologia* 106, 73–84. doi: 10.1007/BF00334409
- Kume, T., Takizawa, H., Yoshifuji, N., Tanaka, K., Tantisirin, C., Tanaka, N., et al. (2007). Impact of soil drought on sap flow and water status of evergreen trees in a tropical monsoon forest in northern Thailand. *For. Ecol. Manag.* 238, 220–230. doi: 10.1016/j.foreco.2006.10.019
- Lau, R. R., and Young, D. R. (1988). Influence of physiological integration on survivorship and water relations in a clonal herb. *Ecology* 69, 215–219. doi: 10.2307/1943177
- Li, R., Werger, M. J. A., During, H. J., and Zhong, Z. C. (1998a). Biennial variation in production of new shoots in groves of the giant bamboo in Sichuan. *China Plant Ecol.* 135, 103–112.
- Li, R., Werger, M. J. A., During, H. J., and Zhong, Z. C. (1998b). Carbon and nutrient dynamics in relation to growth rhythm in the giant bamboo. *Plant Soil* 201, 113–123.
- Liese, W., and Köhl, M. (2015). *Bamboo: the Plant and its Uses*. Cham: Springer.



- Lu, P., Urban, L., and Zhao, P. (2004). Granier's thermal dissipation probe (TDP) method for measuring sap flow in trees: theory and practice. *Acta Bot. Sin.* 46, 631–646.
- Marshall, C. (1996). Sectoriality and physiological organisation in herbaceous plants: an overview. *Vegetatio* 127, 9–16. doi: 10.1007/bf00054842
- Mei, T., Fang, D., Röhl, A., and Hölscher, D. (2017). The influence of bamboo culm water content on sap flux measurements with thermal dissipation probes: observations and modeling. *Trees* 32, 441–451. doi: 10.1007/s00468-017-1641-4
- Mei, T., Fang, D., Röhl, A., Niu, F., Hendrayanto, and Hölscher, D. (2016). Water use patterns of four tropical bamboo species assessed with sap flux measurements. *Front. Plant Sci.* 6:1202. doi: 10.3389/fpls.2015.01202
- Münch, E. (1930). *Die Stoffbewegungen in der Pflanze*. Jena: Verlag von Gustav Fischer.
- O'Brien, J. J., Oberbauer, S. F., and Clark, D. B. (2004). Whole tree xylem sap flow responses to multiple environmental variables in a wet tropical forest. *Plant Cell Environ.* 27, 551–567. doi: 10.1111/j.1365-3040.2003.01160.x
- Savage, J. A., Clearwater, M. J., Haines, D. F., Klein, T., Mencuccini, M., Sevanto, S., et al. (2015). Allocation, stress tolerance and carbon transport in plants: how does phloem physiology affect plant ecology? *Plant Cell Environ.* 39, 709–725. doi: 10.1111/pce.12602
- Song, X., Peng, C., Zhou, G., Gu, H., Li, Q., and Zhang, C. (2016). Dynamic allocation and transfer of non-structural carbohydrates, a possible mechanism for the explosive growth of Moso bamboo. *Sci. Rep.* 6:25908. doi: 10.1038/srep25908
- Stueffer, J. F., De Kroon, H., and During, H. J. (1996). Exploitation of environmental heterogeneity by spatial division of labor in a clonal plant. *Funct. Ecol.* 10, 328–334.
- Thompson, M. V., and Holbrook, N. M. (2003). Scaling phloem transport: water potential equilibrium and osmoregulatory flow. *Plant Cell Environ.* 26, 1561–1577. doi: 10.1046/j.1365-3040.2003.01080.x
- Ueda, K. (1960). Studies on the physiology of bamboo with reference to practical application. *Bull. Kyoto Univ. For.* 30, 1–169.
- Van Den Besselaar, E. J. M., Klein Tank, A. M. G., Van Der Schrier, G., Abass, M. S., Baddour, O., Van Engelen, A. F. V., et al. (2014). International climate assessment & dataset: climate services across borders. *Bull. Am. Meteorol. Soc.* 96, 16–21.
- Wang, Y., Dong, M., Yu, F., Jiang, H., Yu, S., Lin, X., et al. (2011). Mechanical shaking and soil water affect the growth of in the Mu Us Sandland. *J. Arid Environ.* 75, 974–977. doi: 10.1016/j.jaridenv.2011.04.019
- Wang, Z., Li, Y., Doring, H. J., and Li, L. (2011). Do clonal plants show greater division of labour morphologically and physiologically at higher patch contrasts? *PLoS One* 6:e25401. doi: 10.1371/journal.pone.0025401
- Yang, S., Zhang, Y., Goldstein, G., Sun, M., Ma, R., and Cao, K. (2015). Determinants of water circulation in a woody bamboo species: afternoon use and night-time recharge of culm water storage. *Tree Physiol.* 35, 964–974. doi: 10.1093/treephys/tpv071
- Zhang, Y., Zhang, Q., and Sammul, M. (2012). Physiological integration ameliorates Negative effects of drought stress in the clonal herb. *PLoS One* 7:e44221. doi: 10.1371/journal.pone.0044221
- Zhao, X., Zhao, P., Zhang, Z., Zhu, L., Niu, J., Ni, G., et al. (2016). Sap flow-based transpiration in : applicability of the TDP methodology, age effect and rhizome role. *Trees* 31, 765–779. doi: 10.1007/s00468-016-1407-4

**Conflict of Interest Statement:** The authors declare that the research was conducted in the absence of any commercial or financial relationships that could be construed as a potential conflict of interest.

Copyright © 2019 Fang, Mei, Röhl and Hölscher. This is an open-access article distributed under the terms of the Creative Commons Attribution License (CC BY). The use, distribution or reproduction in other forums is permitted, provided the original author(s) and the copyright owner(s) are credited and that the original publication in this journal is cited, in accordance with accepted academic practice. No use, distribution or reproduction is permitted which does not comply with these terms.