



Genome-Wide Identification, Localization, and Expression Analysis of Proanthocyanidin-Associated Genes in *Brassica*

Xianjun Liu^{1,2†}, Ying Lu^{1†}, Mingli Yan³, Donghong Sun¹, Xuefang Hu, Shuyan Liu¹, Sheyuan Chen¹, Chunyun Guan¹ and Zhongsong Liu^{1*}

¹ Oilseed Crops Institute, Hunan Agricultural University, Changsha, Hunan, China, ² College of Life Sciences, Resources and Environment Sciences, Yichun University, Yichun, China, ³ School of Biology, Hunan University of Science and Technology, Xiangtan, China

OPEN ACCESS

Edited by:

Maoteng Li,
Huazhong University of Science and
Technology, China

Reviewed by:

Chunyu Zhang,
Huazhong Agricultural University,
China
Qing-Yong Yang,
Huazhong Agricultural University,
China

*Correspondence:

Zhongsong Liu
zslu48@sohu.com

[†]These authors have contributed
equally to this work.

Specialty section:

This article was submitted to
Crop Science and Horticulture,
a section of the journal
Frontiers in Plant Science

Received: 13 August 2016

Accepted: 21 November 2016

Published: 09 December 2016

Citation:

Liu X, Lu Y, Yan M, Sun D, Hu X, Liu S,
Chen S, Guan C and Liu Z (2016)
Genome-Wide Identification,
Localization, and Expression Analysis
of Proanthocyanidin-Associated
Genes in *Brassica*.
Front. Plant Sci. 7:1831.
doi: 10.3389/fpls.2016.01831

Proanthocyanidins (PA) is a type of prominent flavonoid compound deposited in seed coats which controls the pigmentation in all *Brassica* species. Annotation of *Brassica juncea* genome survey sequences showed 72 PA genes; however, a functional description of these genes, especially how their interactions regulate seed pigmentation, remains elusive. In the present study, we designed 19 primer pairs to screen a bacterial artificial chromosome (BAC) library of *B. juncea*. A total of 284 BAC clones were identified and sequenced. Alignment of the sequences confirmed that 55 genes were cloned, with every *Arabidopsis* PA gene having 2–7 homologs in *B. juncea*. BLAST analysis using the recently released *B. rapa* or *B. napus* genome database identified 31 and 58 homologous genes, respectively. Mapping and phylogenetic analysis indicated that 30 *B. juncea* PA genes are located in the A-genome chromosomes except A04, whereas the remaining 25 genes are mapped to the B-genome chromosomes except B05 and B07. RNA-seq data and Fragments Per Kilobase of a transcript per Million mapped reads (FPKM) analysis showed that most of the PA genes were expressed in the seed coat of *B. juncea* and *B. napus*, and that *BjuTT3*, *BjuTT18*, *BjuANR*, *BjuTT4-2*, *BjuTT4-3*, *BjuTT19-1*, and *BjuTT19-3* are transcriptionally regulated, and not expressed or downregulated in yellow-seeded testa. Importantly, our study facilitates in better understanding of the molecular mechanism underlying *Brassica* PA profiles and accumulation, as well as in further characterization of PA genes.

Keywords: *Brassica* spp., proanthocyanidin biosynthesis, gene cloning, BAC library, seed color

INTRODUCTION

In oilseed brassicas, a yellow-seeded form is preferred over a black- or brown-seeded counterpart mainly because of a thinner seed coat and higher oil content (Friedt and Snowdon, 2009; Velasco and Fernandez-Martinez, 2009). Importantly, proanthocyanidins (PAs) play a critical role in this differential pigmentation process (Auger et al., 2010; Fang et al., 2012; Lu et al., 2012).

Proanthocyanidins (PAs) are end-products of a well-studied branch of the flavonoid biosynthetic pathway in higher plants (Winkel-Shirley, 2001; Lepiniec et al., 2006; Saito et al., 2013). In

Arabidopsis, a close relative of the *Brassica* species, 19 single-copy genes have been associated with PA (Appelhaagen et al., 2014, 2015; Ichino et al., 2014). These genes can be divided into three classes based on their functions: structural, transcriptionally regulatory, or genes responsible for PA modification, transport, and oxidation. PA genes have also been cloned from a dozen other plant species (Hichri et al., 2011; Falcone Ferreyra et al., 2012) such as maize, and soybean (Yang et al., 2010; Senda et al., 2012). In contrast to single-copy genes in *Arabidopsis*, several plant species have multiple homologs for a given PA gene. For example, there are nine *CHS* homologs in soybean (Yi et al., 2010).

In *Brassica* species homologous cloning is used to isolate PA genes by such as *DFR/TT3* (Yan et al., 2008; Akhov et al., 2009), *ANS/TT18* (Yan et al., 2011), *ANR/BAN* (Nesi et al., 2009), *TT10* (Zhang et al., 2013), *TT2* (Wei et al., 2007), *TT8* (Padmaja et al., 2014), *TT12* (Chai et al., 2009), *TT16* (Deng et al., 2012; Chen et al., 2013), *TTG1* (Zhang et al., 2009; Yan et al., 2014) and *TTG2* (Li et al., 2015). However, homologous cloning has drawbacks. It needs prior knowledge of sequences of homologous gene, and is slow and difficult to amplify all members of a gene family, particularly in polyploid species, e.g., *Brassica juncea*, an allotetraploid species. To address these limitations, next-generation sequencing has been widely adopted. Up to date the genomes of over 100 plant species, including *B. rapa* (Wang et al., 2011), *B. oleracea* (Liu et al., 2014), and *B. napus* (Chalhoub et al., 2014) have been sequenced. Very recently, the genome sequence of *B. nigra* has also been released (<http://www.ncbi.nlm.nih.gov/genome/10988>). Whole-genome sequence annotation facilitates in genome-wide identification of PA genes (Velasco et al., 2007; Guo et al., 2014). However, the PA genes of *Brassica* species have not been analyzed in great detail. Furthermore, the complete genome sequencing of *Brassica juncea* has not been achieved to date. Yang et al. (2014) has conducted a survey of genome sequences in *B. juncea*. Genome survey sequencing (GSS) can provide information about gene content, functional elements and molecular markers (Jiao et al., 2012; Hirakawa et al., 2015), as well as compare genes of related species for the phylogenetic reconstruction of other non-model species.

Reverse transcription-polymerase chain reaction (RT-PCR), real-time fluorescent quantitative PCR, and transcriptome sequencing (RNA-seq) can analyze the spatial and temporal expression pattern, functions and interactions among various genes (Agarwal et al., 2014). RNA-seq is widely used to estimate transcript amounts and to obtain a quantitative account of transcript amounts in organisms, organs, tissues, or specific cell types, frequently comparing transcript amounts among different samples (Martin et al., 2013; Weber, 2015).

In the present study, GSS was conducted on the inbred line of *B. juncea* var. Purple-leaf Mustard (PM), and a total of 69,193 coding genes, including 72 PA genes, were predicted by annotation of GSS. Approximately 19 primer pairs specific for PA genes were then designed to screen a bacterial artificial chromosome (BAC) library of *B. juncea*, which was constructed from the same inbred line. In total, 284 BAC clones were identified and 55 *B. juncea* PA genes were confirmed by sequencing of fragments amplified from representative BAC

clones. Its genomic or chromosomal positions were predicted by mapping to the sequenced *B. rapa*, *B. nigra*, or *B. napus* genomes, which was used as reference genomes to perform phylogenetic analysis on the full-length gene sequences and the end sequences of gene-carrying BACs. The expression level of PA genes were estimated in the seed coat and compared between the yellow- and brown-seed coat by fragments per kilobase of exon model per million mapped reads (FPKM) analysis of RNA-seq data in *B. juncea* and *B. napus*. Identification, mapping, and expression analysis of the PA genes in the present study may facilitate in better understanding the genetic mechanism underlying proanthocyanidin biosynthesis, profile, and accumulation in various *Brassica* species.

MATERIALS AND METHODS

Plant Accessions

The inbred line of *B. juncea* var. PM was used for GSS and construction of the BAC library. RNA was extracted from the seed coat of the inbred line of *B. juncea* var. Sichuan Yellow (SY, yellow-seeded) and its brown-seeded near-isogenic lines (NILA and NILB), the black-seeded *B. napus* cv. Xiangyou 15 and two of its F₇ recombinant inbred lines RIL52 and RIL55 15 days after pollination (DAP, torpedo to late torpedo stage) (Liu et al., 2009; Nesi et al., 2009). The plants were grown in a greenhouse under a photoperiod of 16 h/8 h (day/night cycle) at 22°C.

Genome Sequencing, Sequence Assembly, Gene Prediction, and Annotation

Paired-end (PE) libraries were prepared using total DNA from PM, which were then constructed according to the instructions provided by Illumina (San Diego, CA, USA) with a 500-bp insert size and 125-bp read length. Sequence analyses were conducted using the Illumina HiSeq 2000 platform.

The obtained reads were subjected to quality control as follows: bases with quality scores <10 were filtered out by FastQC-0.11.3 (Schmieder and Edwards, 2011). Adaptor sequences in the reads were trimmed using fastx clipper of the FASTX-Toolkit 0.0.13 (http://hannonlab.cshl.edu/fastx_toolkit). After trimming, reads including *N* nucleotide lengths of <100 bases were excluded, and the remaining high-quality data was used for *de novo* sequence assembly by SOAP (Schmieder and Edwards, 2011). Protein-encoding sequences in the assembled genomic sequences of PM were predicted by Augustus 2.7 (Stanke and Waack, 2003) using the *A. thaliana* training set under the default parameters. Reciprocal best-hit analysis (Moreno-Hagelsieb and Latimer, 2008) was performed to compare the results of the prediction by using *B. rapa* training sets.

Construction, Pooling, and Screening of the BAC Library

The *B. juncea* BAC library named ZBjuH was constructed from the inbred line of the PM that were treated with the restriction endonuclease *HindIII* (Luo and Wing, 2003). This library consists of 71,808 clones with an average insert size of 126 kb genomic DNA, and an estimated 10.8-fold coverage of the *B. juncea*

genome. The clones were arranged in 187 384-well plates. The clones were organized into three-dimensional BAC pools of plates, rows, and columns. The superplate consisted of 19 DNA samples, each representing 10 BAC plates, except for superplate 19, which only consists of 7 384-well plates. The first dimension consisted of the BAC clone plate of 187 DNA samples. The second and third dimensions consisted of 8 and 12 DNA samples, respectively, for the pooled 16 rows and 24 columns of the BAC clones. Screening of single BAC clones was performed in a five-step PCR process (**Figure S1**). The PCR primers were designed according to the conserved sequences of the PA genes that were annotated from the *B. juncea* GSS (**Table S1**). PCR reactions were performed in a total volume of 10 μ L with a reaction mixture as follows: 10 \times PCR buffer (1.0 μ L), dNTP mix (10 mM each, 0.15 μ L), 1 U Taq DNA polymerase (Takara, Japan), 1 μ L template, 10 mM forward primer (0.5 μ L), 10 mM reverse primer (0.5 μ L) and ddH₂O up to 10 μ L. A “touchdown” PCR amplification program is used as follows: 94°C for 5 min; 6 cycles of 30 s at 94°C, 40 s at 62°C with a 1°C decrease in the annealing temperature per cycle, and 1 min at 72°C; 30 cycles of 30 s at 94°C, 45 s at 56°C, and 1 min at 72°C; and a final extension at 72°C for 10 min. The PCR products were observed by electrophoresis on 1.5% agarose gels using ethidium bromide and UV visualization. The BAC clones from which the fragment of expected size was amplified were considered positive BAC clones.

Grouping and Sequencing for Full-Length Gene of Positive BAC Clones

Gene fragments amplified from the positive BAC clones were sequenced and aligned with annotated PA genes using DNAMAN4.0 (LynnonBiosoft, USA) to confirm whether the cloned and the annotated gene were the same copy. When a cloned gene harbored a single nucleotide difference (SNP) and/or insertion or deletion (Indels) in its sequence from the corresponding annotated gene, the cloned and the annotated genes are considered different. For each PA gene, one or two BAC clones were selected for sequencing of the full-length genes by the high-quality, longer read Sanger method (Life Technologies, Shanghai).

Identification and Phylogenetic Analysis of PA Genes in *B. napus*, *B. nigra*, and *B. rapa*

The sequences of cloned *B. juncea* PA genes were mapped to the released *B. napus* (<http://www.genoscope.cns.fr/blat-server/cgi-bin/colza/webBlat>), *B. nigra* (<http://www.ncbi.nlm.nih.gov/genome/10988>), or *B. rapa* (<http://brassicadb.org/brad/blastPage.php>) reference genome to search for homologous *B. napus*, *B. nigra* or *B. rapa* PA genes with an identity $\geq 90\%$. Phylogenetic analysis of homologous PA genes in *B. juncea*, *B. rapa*, *B. napus*, and *Arabidopsis* was performed by using neighbor-joining (NJ) method as provided in MEGA 5.2 (Tamura et al., 2011), and the reliability of the phylogenetic trees was evaluated by the bootstrap method, with 1000 replications. The *B. juncea* PA genes on the same branch (clade) of the phylogenetic tree were classified into a homologous group.

Sequencing and Mapping of BAC Ends

The BACs used for full-length sequencing of the gene were also sequenced for end-sequencing on an ABI 3730X DNA analyzer (Life Technologies, Shanghai). The sequencing primers were modified pIndigoBAC536 cloning vector-derived sequencing primers M13R (5'-CAGGAAACAGCTAT-GACC-3') and S2 (5'-CGAATTCGAGCTCGGTACCC-3'). The sequence obtained by using the primer M13R was designated as left end (L) of the BAC clone, whereas the sequence by S2 was considered the right end (R). BAC end-sequences (BESs) were also mapped to the recently sequenced *B. napus* (<http://www.genoscope.cns.fr/blat-server/cgi-bin/colza>), *B. nigra* (<http://www.ncbi.nlm.nih.gov/genome/10988>) or *B. rapa* (<http://brassicadb.org>) reference genome to assign a genomic location when at least 100 bp aligned to the reference genome, with at least 75% identity. If hits were obtained at multiple locations in any one of the reference genomes, then a BES was assigned to the position of the hit with the highest identity. The position of a BES was indicated by the first and the last assigned nucleotide (nt) on each reference genome.

Expression Analysis of PA Genes in Seed Coat

Isolation, reverse transcription and RNA-seq analysis of RNA from fresh seed coats were performed as described by Liu et al. (2013). The expression level of every PA gene in the seed coat was calculated using the FPKM method (Mortazavi et al., 2008). To compare transcript abundance of cloned PA genes in seed coat between the yellow-seeded inbred SY and its brown-seeded near-isogenic lines (NILA and NILB), the respective mapped reads from the SY/NILA and the SY/NILB pairs for each gene were counted using TopHat v2.0.9 (Kim et al., 2013). Fold changes for each gene between NILs and SY were computed as the ratio of the FPKM values. When the FPKM value of NILs or SY was 0, the substitute 0.001 was used for estimation of fold change. To display changes of PA gene expression in seed coat, the heatmap was constructed by using Heml software (“Normalization:” Logarithmic Base 2, “DEMO:” Canvas) (Deng et al., 2014).

The primers used in RT-PCR expression analysis are listed in **Table S2**. The following cycling parameters were used for amplification of the PA genes: 1 cycle of 4 min at 94°C; 38 cycles of 50 s at 94°C, 50 s at 58°C, 1 min at 72°C; one cycle of 6 min at 72°C. The PCR products were verified by gel electrophoresis as earlier described.

RESULTS

Identification and Cloning of PA Genes in *B. juncea*

A total of 56.2 Gb high-quality sequencing data were assembled into 835 Mb of genomic sequence, with contig and scaffold N50 sizes of 2584 bp and 16,777 bp in *B. juncea* (**Table S3**). A total of 233,309 coding genes were predicted by Augustus 2.7 (**Table S3**) and annotated by alignment of the deduced amino acid sequence to *B. rapa* genes (<http://brassicadb.org/brad/>).

Approximately 69,193 records were screened out, with sequence identity greater than 70% and alignment length greater than 100 amino acids, which correspond to 32,798 *B. rapa* genes (Table S4). For a *B. rapa* gene, an averaged 2.1 homologs, at most 11 homologs, were detected in the *B. juncea* genome. Among the 69,193 predicted *B. juncea* genes, 72 were identified as PA genes (Table S5). The number of *B. juncea* genes that were homologous to a given *Arabidopsis* PA gene varied from two (*DFR*, *TT1*, *TT2*, *TT8*, *TTG1*, and *TT12*) to six (*TT4*, *TT6*, and *ANR*) (Table S5). Furthermore, two annotated *B. juncea* genes of *TT6* and *TT7* were located within the same scaffold (Table S5).

A total of 284 positive BAC clones were identified using 19 PA gene-specific primer pairs from ZBjuH BAC library (Table 1). The amplified fragments were sequenced, and 284 clean sequences with sizes between 192 and 1487 bp were obtained. Alignment showed that these fragments represented 55 *B. juncea* PA genes, corresponding to 16 *Arabidopsis* PA genes, with each *Arabidopsis* PA gene having 2–7 *B. juncea* homologs (Table 1). All cloned *B. juncea* PA genes, except for *BjuTT4-2*, *BjuTT4-7*, and *BjuTT16-6*, showed genomic sequences that were similar to the corresponding predicted PA genes. These amplified sequences were not evenly distributed among genes. For 6 genes, only one sequence was each identified, whereas at least 10 sequences were detected for 7 other genes. The remaining 42 genes were each carried by 2–9 BAC clones (Table 1), which is consistent with coverage of the genome by the BAC library used. No BAC clones were identified for six the annotated genes (*TT4_g135394*, *TT5_g158015*, *ANR_g228640*, *ANR_g226654*, *TT19_g144296*, and *TT19_g167454*) (Figure S3).

One or two BAC clones were chosen for each of the above mentioned PA gene groups of BAC clones and sequenced by walking to obtain full-length gene sequence. Alignment of the resultant full-length gene with its respective GSS sequence indicated that two predicted genes was in fact from the same gene because each of them was only a portion of the same gene (Table S6). Finally, 55 PA genes were confirmed in *B. juncea* by BAC sequencing (Table 2).

Genomic Locations of PA Genes in *Brassica* Species

BLAST of these cloned 55 *B. juncea* PA genes against the *B. rapa* or *B. napus* reference genome identified 31 and 58 homologous genes in *B. rapa* and *B. napus*, respectively (Table 2). The neighbor-joining tree of the PA genes from *B. juncea*, *B. rapa*, *B. napus*, and *Arabidopsis* showed that *TT4* genes were clustered into five homologous groups, *TT5*, *TT6*, and *TT16* each into three groups; *TT10*, *TT18*, *TTG2*, and *TT19* each into two groups; and the remaining *TT3*, *TT7*, *ANR*, *TT1*, *TT2*, *TT8*, *TTG1*, and *TT12* genes were clustered into only one homologous group, indicating that these genes were highly conserved in terms of genomic sequence (Figure S2).

Mapping of these cloned 55 *B. juncea* PA genes to the *B. rapa*, *B. nigra*, or *B. napus* reference genome indicated that 30 and 29 PA genes were homologous to the genes located in A-genome chromosomes except A04 of *B. rapa* and *B. napus*, respectively, whereas 23 of the other 25 genes were located in

the B-genome chromosomes except B05 and B07 of *B. nigra*, the remaining two gene (*BjuTT5-4* and *BjuTT2-2*) were anchored on scaffold_30.1 and scaffold_500.1 of *B. nigra*, respectively, which have not yet been mapped onto a chromosome (Table 3, Figure 1). These PA genes have >95 identity (Table 3). Moreover, 23 of these A-genome PA genes were, respectively, located on the same chromosomes in *B. rapa* and *B. napus*, but additional genes may be located in either the same or different A-genome chromosomes or C-genome chromosomes because their positions have not been mapped to the *B. napus* reference genome (Table 3). The B-genome and the C-genome contributed 25 and 29 PA genes to *B. juncea* and *B. napus* genome, respectively, which is approximately equal to the number of PA genes from the A-genome.

To confirm the above genomic locations, the BAC clones used for sequencing full-length genes were also sequenced for BESs. The resulting BESs between 587 and 1233 bp in length were also mapped in a similar way. Mapping of the BESs to the *B. rapa* reference genome showed that both BESs of 23 A-genome *B. juncea* PA genes were mapped around the genomic position as mapped by the full-length sequence of the corresponding genes. However, one BES of the BACs carrying two A-genome genes, i.e., *BjuTT2-1* and *BjuTTG1-1* was mapped to an unfixed scaffold, whereas one BES of the BACs carrying the remaining five A-genome genes, i.e., *BjuTT5-2*, *BjuTT6-1*, *BjuANR-2*, *BjuTT10-1*, and *BjuTTG2-1* was mapped to an unexpected genomic position (Table 4). Mapping of the BESs to the *B. napus* reference genome generated a more complicated picture. For only 15 A-genome *B. juncea* PA genes, both BESs were mapped around the genomic position as mapped by the full-length sequence of the corresponding genes. One or both BESs of the BACs carrying 7 A-genome genes, i.e., *BjuTT5-1*, *BjuTT6-2*, *BjuTT7-1*, *BjuTT16-2*, *BjuTT1-1*, *BjuTT2-1*, and *BjuTTG1-1* were mapped to an unfixed scaffold, whereas one or both BESs of the BACs carrying the remaining 8 A-genome genes were mapped to an unexpected A-genome chromosome, or a C-genome chromosome in *B. napus* reference genome (Table 4). Mapping of the BESs to the *B. nigra* reference genome showed that both BESs of 19 B-genome *B. juncea* PA genes were mapped around the genomic position as mapped by the full-length sequence of the corresponding genes, one BES of the BACs carrying three B-genome genes, i.e., *BjuTT4-6*, *BjuTT18-4*, and *BjuTT7-2* was mapped to an unexpected genomic position in the *B. nigra* reference genome, and then one BES of the BACs carrying the remaining three B-genome genes, i.e., *BjuTT5-4*, *BjuTT1-2*, and *BjuTT2-2* was mapped to an unfixed scaffold (Table 4).

Expression of PA Genes in Seed Coat of *B. juncea* and *B. napus*

Fragments Per Kilobase of a transcript per Million (FPKM) analysis indicated that 55 annotated *B. napus* PA genes (excluding *BnaCnng01290D* and *BnaA09g29340D*), and all cloned *B. juncea* PA genes except *BjuTT5-1* and *BjuTT5-4* were expressed in seed coat (Figure 2, Table S7). However, transcript abundance significantly varied among PA genes, as well as accessions. In general, the expression level of structural and transporter

TABLE 1 | Grouping of the PA gene carrier BAC clones screened by PCR from *Brassica juncea*.

| Gene Type | <i>Arabidopsis</i> homolog | Primer pair used | Predicted gene | Cloned gene | No. BACs | BAC clone(s) carrying the gene | |
|------------|----------------------------|------------------|---------------------|------------------|-----------------|--|--|
| Structural | TT4/CHS | STT4 | g125911 | <i>BjuTT4-1</i> | 5 | ZBjuH038D07, ZBjuH052L16, ZBjuH187G14 , ZBjuH187G15, ZBjuH187H15 | |
| | | | - | <i>BjuTT4-2</i> | 14 | ZBjuH036L22, ZBjuH062E10, ZBjuH068P04, ZBjuH090C04, ZBjuH103N17, ZBjuH115L06, ZBjuH117A13, ZBjuH125A20, ZBjuH130C13, ZBjuH167H05, ZBjuH167H11, ZBjuH167H12, ZBjuH17506 , ZBjuH187A11 | |
| | | | g94262 | <i>BjuTT4-3</i> | 16 | ZBjuH037O10 , ZBjuH040M24, ZBjuH042E09, ZBjuH054M24, ZBjuH058B18, ZBjuH102A19, ZBjuH103N21, ZBjuH110J17, ZBjuH111B11, ZBjuH119C13, ZBjuH124I11, ZBjuH129K08, ZBjuH139O13, ZBjuH143K02, ZBjuH162N03, ZBjuH165A05 | |
| | | | g160192 | <i>BjuTT4-4</i> | 5 | ZBjuH031A21, ZBjuH031B12, ZBjuH036O12 , ZBjuH048I18, ZBjuH095E01 | |
| | | | g112186 | <i>BjuTT4-5</i> | 2 | ZBjuH044O21, ZBjuH053C09 | |
| | | | g134422 | <i>BjuTT4-6</i> | 2 | ZBjuH053C08 , ZBjuH115L05 | |
| | | | - | <i>BjuTT4-7</i> | 4 | ZBjuH049I15, ZBjuH049J15, ZBjuH090K23 , ZBjuH12120 | |
| | | TT5/CHI | STT5 | g10826 | <i>BjuTT5-1</i> | 1 | ZBjuH186N11 |
| | | | | g147891 | <i>BjuTT5-2</i> | 1 | ZBjuH181K10 |
| | | | | g94675 | <i>BjuTT5-3</i> | 10 | ZBjuH027P19, ZBjuH036L22, ZBjuH041J15, ZBjuH058J20, ZBjuH066I18, ZBjuH066O10, ZBjuH080G05 , ZBjuH156B18, ZBjuH158J20, ZBjuH177D05 |
| | | | g153768 | <i>BjuTT5-4</i> | 5 | ZBjuH096N21, ZBjuH106O08 , ZBjuH108L09, ZBjuH119I24, ZBjuH122O18 | |
| TT6/F3H | | STT6 | g93144 | <i>BjuTT6-1</i> | 7 | ZBjuH020C14, ZBjuH049G02, ZBjuH048M11, ZBjuH058K21 , ZBjuH120F22, ZBjuH165E24, ZBjuH181K08 | |
| | | | g230814 | <i>BjuTT6-2</i> | 5 | ZBjuH058P02, ZBjuH059D03, ZBjuH076G06, ZBjuH087J23 , ZBjuH144L06 | |
| | | | g34078 | <i>BjuTT6-3</i> | 1 | ZBjuH031F14 | |
| | | | g58779 | <i>BjuTT6-4</i> | 8 | ZBjuH022O18 , ZBjuH025L04, ZBjuH047N11, ZBjuH088F14, ZBjuH095M08, ZBjuH106B12, ZBjuH132K03, ZBjuH132P11 | |
| | | | g51817 | <i>BjuTT6-5</i> | 6 | ZBjuH106N13, ZBjuH131P01, ZBjuH143I07 , ZBjuH146J13, ZBjuH149K20, ZBjuH171M24 | |
| TT7/F3H | | STT7 | g118579 | <i>BjuTT7-1</i> | 9 | ZBjuH012H01, ZBjuH025M21, ZBjuH045C24, ZBjuH063G22, ZBjuH095P11, ZBjuH105C09, ZBjuH156A19, ZBjuH159L04 , ZBjuH175L17 | |
| | | | g105339/ g105340 | <i>BjuTT7-2</i> | 4 | ZBjuH080O14 , ZBjuH081G21, ZBjuH092C04, ZBjuH153O14 | |
| | | | | | | | |
| TT3/DFR | | SDFR | g119544 | <i>BjuTT3-1</i> | 7 | ZBjuH029J10 , ZBjuH043G11, ZBjuH118M13, ZBjuH119K03, ZBjuH157O03, ZBjuH157P04, ZBjuH184C12 | |
| | | | g127201 | <i>BjuTT3-2</i> | 3 | ZBjuH134O05, ZBjuH175D09, ZBjuH183H13 | |
| | | | | | | | |
| TT18/ANS | | STT18 | g16568 | <i>BjuTT18-1</i> | 4 | ZBjuH054O02 , ZBjuH091D16, ZBjuH181K13, ZBjuH187D05 | |
| | | | g178347 | <i>BjuTT18-2</i> | 3 | ZBjuH020C14, ZBjuH181I12, ZBjuH181K08 | |
| | | | g96816 | <i>BjuTT18-3</i> | 3 | ZBjuH091K10 , ZBjuH097N14, ZBjuH178L19 | |
| | | | g114026 | <i>BjuTT18-4</i> | 5 | ZBjuH054H16, ZBjuH093H16, ZBjuH177N08 , ZBjuH182I21, ZBjuH187H15 | |
| | | | | | | | |
| ANR | | SANR | g97466 | <i>BjuANR-1</i> | 3 | ZBjuH022P08, ZBjuH082J01 , ZBjuH123C06 | |
| | | | g177273 | <i>BjuANR-2</i> | 2 | ZBjuH148I16 , ZBjuH165M04 | |
| | | | g228640 | <i>BjuANR-3</i> | 4 | ZBjuH071P08, ZBjuH116E04 , ZBjuH116E23, ZBjuH185I01 | |
| | | | g19699 | <i>BjuANR-4</i> | 1 | ZBjuH034P21 | |

(Continued)

TABLE 1 | Continued

| Gene Type | Arabidopsis homolog | Primer pair used | Predicted gene | Cloned gene | No. BACs | BAC clone(s) carrying the gene | |
|------------|---------------------|------------------|------------------|------------------|---|---|---|
| Regulatory | TT10 | STT10-1 | g60604 | <i>BjuTT10-1</i> | 6 | ZBjuH003E23, BjuH033G01, ZBjuH048L18, ZBjuH057G09, ZBjuH083G18 , ZBjuH152B03 | |
| | | STT10-2 | g161120 | <i>BjuTT10-2</i> | 9 | ZBjuH006C17, ZBjuH019G11, ZBjuH055H16 , ZBjuH107M03 ZBjuH121G03, ZBjuH126F02, ZBjuH140A18, ZBjuH140E23, ZBjuH144O05, | |
| | STT10-1 | STT10-1 | g169945 | <i>BjuTT10-3</i> | 11 | ZBjuH021A16 , ZBjuH024M11, ZBjuH025E16, ZBjuH037G20 ZBjuH066O13, ZBjuH080H07, ZBjuH084L21, ZBjuH092L15, ZBjuH101B03, ZBjuH144O03, ZBjuH155P16 | |
| | | | | | | ZBjuH176D10 | |
| | TT1 | STT1 | g65737 | <i>BjuTT1-1</i> | 4 | ZBjuH021J20, ZBjuH036J21, ZBjuH157B22, ZBjuH180A05 | |
| | | STT1-2 | g10440 | <i>BjuTT1-2</i> | 3 | ZBjuH097N03, ZBjuH147E23 , ZBjuH176G24 | |
| | TT2 | STT2 | <i>BjuTT2-1</i> | g27300 | <i>BjuTT2-1</i> | 2 | ZBjuH085H24 , ZBjuH137N11 |
| | | | <i>BjuTT2-2</i> | g136881 | <i>BjuTT2-2</i> | 7 | ZBjuH028M22, ZBjuH034J15 , ZBjuH061O14, ZBjuH068M24, ZBjuH135H01, ZBjuH149C17, ZBjuH172K23 |
| | TT8 | STT8-1 | STT8-2 | g113056 | <i>BjuTT8-1</i> | 5 | ZBjuH004L18 , ZBjuH038M05, ZBjuH068D18, ZBjuH122Z23, ZBjuH173H05 |
| | | | | g109603 | <i>BjuTT8-2</i> | 3 | ZBjuH005J18 , ZBjuH033E04, ZBjuH036F18 |
| | TT16 | STT16-1 | STT16-2 | g141603 | <i>BjuTT16-1</i> | 2 | ZBjuH051G23, ZBjuH130K12 |
| g157583 | | | | <i>BjuTT16-2</i> | 6 | ZBjuH046H18, ZBjuH070H21, ZBjuH082B14, ZBjuH099A21 , ZBjuH153H13, ZBjuH171M11 | |
| STT16-2 | | STT16-2 | g150784 | <i>BjuTT16-3</i> | 2 | ZBjuH091L03 , ZBjuH163M05 | |
| | | | - | <i>BjuTT16-4</i> | 4 | ZBjuH057K05, ZBjuH057K06, ZBjuH096G12 , ZBjuH160B19 | |
| STT16-1 | | STT16-1 | g231621 | <i>BjuTT16-5</i> | 7 | ZBjuH061F23, ZBjuH064A06, ZBjuH070C13, ZBjuH094F17, ZBjuH094N07 , ZBjuH131N02, ZBjuH135M11 | |
| | | | g170816 | <i>BjuTT16-6</i> | 11 | ZBjuH013K01, ZBjuH030F17, ZBjuH049C21, ZBjuH077C18 , ZBjuH077C23, ZBjuH081M09, ZBjuH093J03, ZBjuH142O22, ZBjuH144E18, ZBjuH152O04, ZBjuH171A06 | |
| TTG1 | STT1 | g228836 | <i>BjuTTG1-1</i> | 2 | ZBjuH030O08, ZBjuH130K10 | | |
| | | g55489 | <i>BjuTTG1-2</i> | 6 | ZBjuH129A18 , ZBjuH135B10, ZBjuH140O11, ZBjuH182K06, ZBjuH185M13, ZBjuH185M14 | | |
| TTG2 | STT2 | g112447 | <i>BjuTTG2-1</i> | 1 | ZBjuH088A24 | | |
| | | g173809 | <i>BjuTTG2-2</i> | 3 | ZBjuH101A24 , ZBjuH131A11, ZBjuH170G21 | | |
| | | g118314 | <i>BjuTTG2-3</i> | 13 | ZBjuH025O05, ZBjuH032N08, ZBjuH039D04, ZBjuH063L13 , BjuH065B18, ZBjuH065I18, ZBjuH066D01, ZBjuH067B22, ZBjuH076O21, BjuH135G23, ZBjuH174G04, ZBjuH174O02, ZBjuH184O06 | | |
| | STT2 | g156630 | <i>BjuTTG2-4</i> | 5 | ZBjuH028C13, ZBjuH043G17 , ZBjuH77P08, ZBjuH147A11, ZBjuH162F23 | | |
| | | g29228 | <i>BjuTT2-1</i> | 4 | ZBjuH046J03, ZBjuH047J16 , ZBjuH148K24, ZBjuH148O16 | | |
| TT12 | STT12 | g146440 | <i>BjuTT2-2</i> | 3 | ZBjuH124J12 , ZBjuH125I12, ZBjuH150E09 | | |
| | | g72809 | <i>BjuTT19-1</i> | 13 | ZBjuH006M03, ZBjuH037H06, ZBjuH061A09, ZBjuH064M21, ZBjuH066G20, ZBjuH092A06, ZBjuH093G08, ZBjuH095N01 , ZBjuH140M06, ZBjuH161G15, ZBjuH165B07, ZBjuH172L17, ZBjuH185D12 | | |
| TT19 | STT19 | g159509 | <i>BjuTT19-2</i> | 6 | ZBjuH062L17, ZBjuH120J17, ZBjuH143N08, ZBjuH170C22 , ZBjuH179C03, ZBjuH181C15 | | |
| | | g118434 | <i>BjuTT19-3</i> | 5 | ZBjuH021A20, ZBjuH070G12, ZBjuH122M08 , ZBjuH164K02, ZBjuH168M17 | | |

The BAC clone in bold was used to sequence full-length sequence of the gene.

TABLE 2 | Proanthocyanidins-associated genes identified in *B. rapa*, *B. juncea*, and *B. napus*.

| <i>A. thaliana</i> | <i>B. rapa</i> ^a | <i>B. juncea</i> ^b | <i>B. napus</i> ^c |
|--------------------------------|-----------------------------|--------------------------------|------------------------------|
| ENZYMES | | | |
| AtTT4/CHS (AT5G13930) | Bra020688(A02) | <i>BjuTT4-1/ TT4_g135394</i> | BnaA02g30320D /BnaC02g05070D |
| | Bra023441(A02) | <i>BjuTT4-2/ BjuTT4-5</i> | BnaC02g38730D/ BnaCnng01290D |
| | Bra006224(A03) | <i>BjuTT4-3/ BjuTT4-6</i> | BnaA03g04590D/ BnaC03g06120D |
| | Bra008792(A10) | <i>BjuTT4-4/ BjuTT4-7</i> | BnaA10g19670D/ BnaC09g43250D |
| | Bra036307(A09) | | BnaA09g29340D |
| AtTTT5/CHI (AT3G55120) | Bra017728(A03) | <i>BjuTT5-1</i> | BnaAnng08210D /BnaC07g45760D |
| | Bra003209(A07) | <i>BjuTT5-2/ TT5_g158015</i> | BnaA07g37900D/BnaCnng45660D |
| | Bra007142(A09) | <i>BjuTT5-3/BjuTT5-4</i> | BnaA09g34840D/BnaC08g26010D |
| AtTT6/F3H (AT3G51240) | Bra012862(A03) | <i>BjuTT6-1/ BjuTT6-4</i> | BnaA03g41250D/BnaC07g32140D |
| | Bra036828(A09) | <i>BjuTT6-2/ BjuTT6-5</i> | BnaA09g31780D/BnaC08g22640D |
| | Bra007813(A09) | <i>BjuTT6-3</i> | BnaA09g55810D |
| AtTT7/F3'H (AT5G07990) | Bra009312(A10) | <i>BjuTT7-1/BjuTT7-2</i> | BnaA10g23330D/BnaC09g47980D |
| AtTT3/DFR (AT5G42800) | Bra027457(A09) | <i>BjuTT3-1/ BjuTT3-2</i> | BnaA09g15710D/BnaC09g17150D |
| AtTT18/ANS (AT4G22880) | Bra013652(A01) | <i>BjuTT18-1/BjuTT18-3</i> | BnaA01g12530D/BnaC01g14310D |
| | Bra019350(A03) | <i>BjuTT18-2/BjuTT18-4</i> | BnaA03g45610D/BnaC07g37670D |
| | Bra021318(A01) | <i>BjuANR-1/BjuANR-2</i> | BnaA03g60670D/BnaC04g18950D |
| AtANR (AT1G61720) | Bra031403(A01) | <i>BjuANR-3/BjuANR-4</i> | BnaA01g36200D/BnaC01g29820D |
| AtTT10 (AT5G48100) | Bra020720(A02) | <i>BjuTT10-1/BjuTT10-3</i> | BnaAnng08030D /BnaC02g38340D |
| | Bra037510(A06) | <i>BjuTT10-2/BjuTT10-4</i> | BnaA06g30430D |
| TRANSCRIPTIONAL FACTORS | | | |
| AtTT1 (AT1G34790) | Bra028067(A09) | <i>BjuTT1-1/ BjuTT1-2</i> | BnaAnng02100D/ BnaC06g08390D |
| AtTT2 (AT5G35550) | Bra035532(A08) | <i>BjuTT2-1/BjuTT2-2</i> | BnaA08g29930D/BnaC08g07960D |
| AtTT8 (AT4G09820) | Bra037887(A09) | <i>BjuTT8-1/BjuTT8-2</i> | BnaA09g22810D/BnaC09g24870D |
| AtTT16 (AT5G23260) | Bra029365(A02) | <i>BjuTT16-1/ BjuTT16-5</i> | BnaAnng30140D/ BnaC02g41690D |
| | Bra013028(A03) | <i>BjuTT16-2/ BjuTT16-6</i> | BnaA03g39500D/BnaC02g42240D |
| | Bra026507(A09) | <i>BjuTT16-3/ BjuTT16-4</i> | BnaA09g05410D/BnaC09g04950D |
| AtTTG1 (AT5G24520) | Bra009770(A06) | <i>BjuTTG1-1/ BjuTTG1-2</i> | BnaC07g29950D |
| AtTTG2 (AT2G37260) | Bra023112(A03) | <i>BjuTTG2-1/ BjuTTG2-3</i> | BnaA03g17120D/BnaC03g20650D |
| | Bra005210(A05) | <i>BjuTTG2-2/ BjuTTG2-4</i> | BnaA05g07220D/BnaC04g08020D |
| TRANSPORTERS | | | |
| AtTT12 (AT3G59030) | Bra003361(A07) | <i>BjuTT12-1/ BjuTT12-2</i> | BnaA07g18120D/BnaC06g17050D |
| AtTT19 (AT5G17220) | Bra023602(A02) | <i>BjuTT19-1/BjuTT19-3</i> | BnaA02g03440D/BnaC02g07090D |
| | Bra008570(A10) | <i>BjuTT19-2/ TT19_g144296</i> | BnaA10g17440D/BnaC09g40740D |

^afrom <http://brassicadb.org/brad/>; ^bthis study; ^cfrom <http://www.genoscope.cns.fr/brassicanapus/>.

genes were higher than that of transcriptional factor genes in black- and brown-seeded accessions analyzed. No transcripts of *BjuTT3*, *BjuANR*, *BjuTT18-1*, *BjuTT19-1*, and *BjuTT19-3* were detected in the seed coat of yellow-seeded SY. In addition, a 7-fold or greater difference in expression level of *BjuTT3*, *BjuTT18*, *BjuANR*, and *BjuTT19* as well as *BjuTT4-2*, *BjuTT4-3*, *BjuTT4-4*, and *BjuTT5-3* were found between SY and its brown-seeded near-isogenic lines (Figure 2, Table S7), implying that these differentially expressed genes are involved in seed pigmentation. Moreover, six additional genes, i.e., *BjuTT4-5*, *BjuTT6-1*, *BjuTT6-4*, *BjuTT8-1*, *BjuTT16-3*, and *BjuTT16-6*, were upregulated by at least 2-fold in seed coat of NILA, whereas four other genes (*BjuTT4-5*, *TT4_g135394*, *BjuTT6-4*, and *BjuTT8-2*) were upregulated by at least 2-fold in seed coat of NILB compared with SY (Figure 2, Table S7). RT-PCR analysis

confirmed the differential expression profile of *BjuTT3*, *BjuTT18*, *BjuANR*, and *BjuTT19* that was carried out using FPKM analysis (Figure 3).

DISCUSSION

In the present study, we identified 55, 58, and 31 PA genes in *B. juncea*, *B. napus*, and *B. rapa* through a combination of experimental and bioinformatics approaches, analyzed their phylogenetic relationship and genomic locations in *Brassica*, and detected and compared their expression in seed coats of different accessions by RNA-seq. Cloning of these genes not only lays a foundation for the elucidation of the molecular mechanism underlying PA accumulation/profile and seed pigmentation

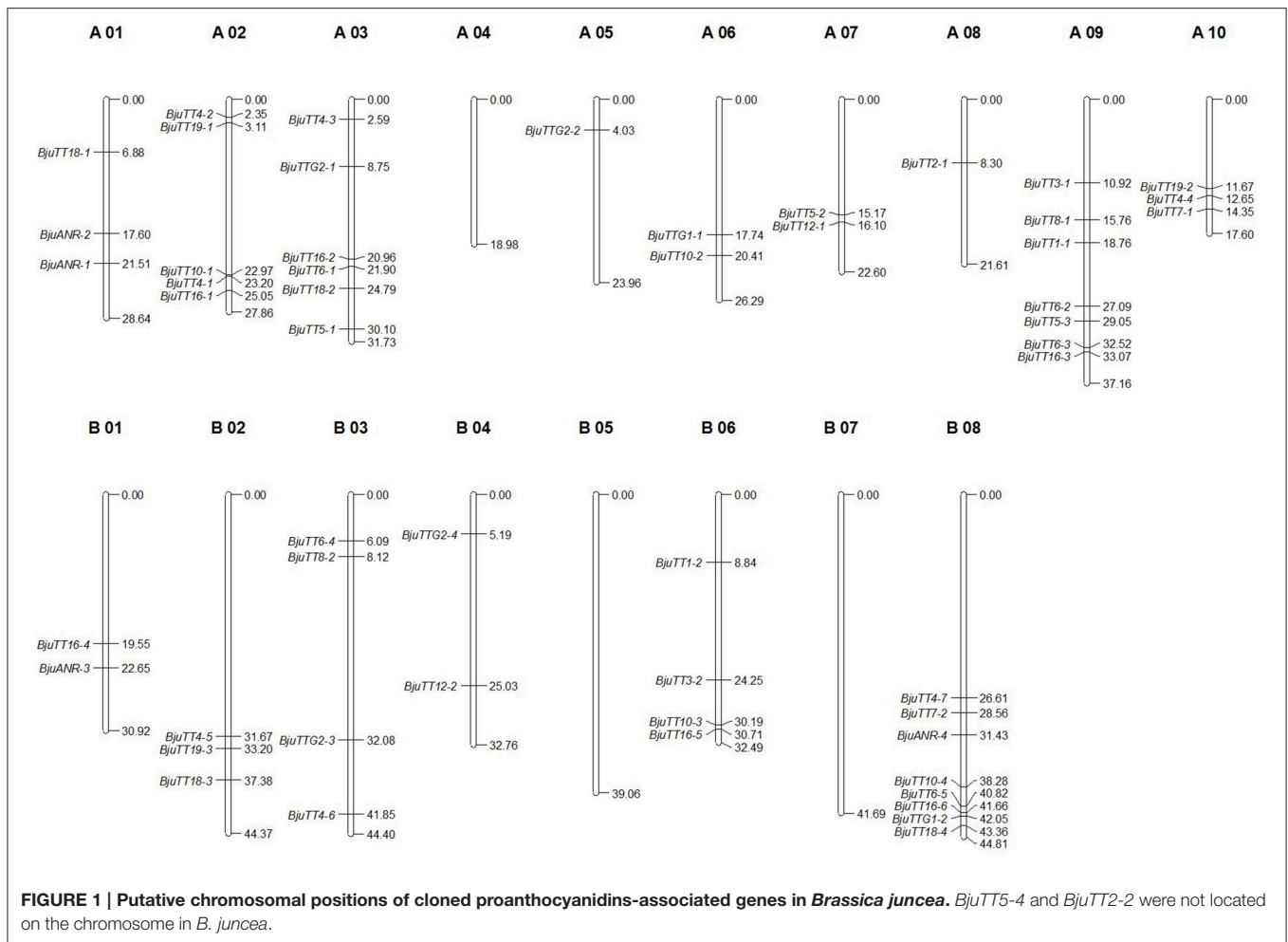
TABLE 3 | Mapping to the Brassica rapa, B. nigra, or B. napus reference genome of full-length sequences of the B. juncea PA genes cloned in this study.

| <i>B. juncea</i> gene | BAC sequenced | Sequence length (bp) | Position in <i>B. rapa</i> / <i>B. nigra</i> reference genome | Coverage (%) | Identity (%) | Putative genome or chromosome | Corresponding <i>B. rapa</i> homolog | Position in <i>B. napus</i> reference genome | Coverage (%) | Identity (%) | Putative genome or chromosome | Corresponding <i>B. napus</i> homolog |
|-----------------------|---------------|----------------------|--|--------------|--------------|-------------------------------|--------------------------------------|--|--------------|--------------|-------------------------------|---------------------------------------|
| <i>BjuTT4-1</i> | ZBjuH187G14 | 1269 | A02(23204660-23205926) | 98.7 | 98.9 | A02 | Bra020688 | A02(21961707-21962975) | 100 | 99.2 | A02 | BnaA02g30320D |
| <i>BjuTT4-2</i> | ZBjuH175I06 | 1454 | A02(2357734-2359185) | 98.0 | 97.9 | A02 | Bra023441 | C02(2648298-2649755) | 99.7 | 96.6 | - | BnaC02g38730D |
| <i>BjuTT4-3</i> | ZBjuH037O10 | 1458 | A03(2596137-2597594) | 92.4 | 99.3 | A03 | Bra006224 | A03(2138849-2140306) | 100 | 99.8 | A03 | BnaA03g04590D |
| <i>BjuTT4-4</i> | ZBjuH036O12 | 1263 | A10(12657235-12655973) | 99.0 | 99.0 | A10 | Bra008792 | A10(13887677-13888939) | 100 | 99.3 | A10 | BnaA10g19670D |
| <i>BjuTT4-5</i> | ZBjuH053C09 | 1516 | B02(31676065-31677577) | 100 | 97.8 | B02 | - | C02(2648298-2649755) | 96.2 | 93.7 | - | BnaCnng01290D |
| <i>BjuTT4-6</i> | ZBjuH053C08 | 1352 | B03(41854375-41855800) | 94.8 | 96.2 | B03 | - | C03(2967996-2969460) | 92.3 | 94.3 | - | BnaC03g06120D |
| <i>BjuTT4-7</i> | ZBjuH090K23 | 1267 | B08(26615339-26614079) | 100 | 96.9 | B08 | - | A10(13887677-13888939) | 99.7 | 93.5 | - | BnaC09g43250D |
| <i>TT4-135394</i> | | 1387 | B06(30337366-30338627) | 97.3 | 94.4 | B03 | - | A03(2138849-2140306) | 96.7 | 94.8 | - | BnaC02g05070D |
| <i>BjuTT5-1</i> | ZBjuH186N11 | 1358 | A03(30108206-30109397) | 98.9 | 99.0 | A03 | Bra017728 | C07(43667810-43668920) | 93.2 | 95.5 | - | BnaC07g45760D |
| <i>BjuTT5-2</i> | ZBjuH181K10 | 1526 | A07(15175119-15173091) | 71.1 | 97.1 | A07 | Bra003209 | A07_random(1352839-1353912) | 70.4 | 100 | A07 | BnaA07g37900D |
| <i>BjuTT5-3</i> | ZBjuH080G05 | 1621 | A09(29057157-29055564) | 98.6 | 97.8 | A09 | Bra007142 | A09(25461126-25462763) | 99.0 | 98.7 | A09 | BnaA09g34840D |
| <i>BjuTT5-4</i> | ZBjuH106O08 | 1625 | scaffold_30.1 (142586-144208) | 99.7 | 98.8 | B | - | C08(27510384-27511983) | 98.5 | 91.9 | - | BnaC08g26010D |
| <i>TT5-g158015</i> | | 1667 | B04(26277974-26279709) | 96.1 | 95.2 | B04 | - | Un_random(67254442-67255989) | 91.6 | 92.4 | - | BnaCnng45660D |
| <i>BjuTT6-1</i> | ZBjuH058K21 | 1343 | A03(21908585-21910045) | 82.4 | 97.0 | A03 | Bra012862 | A03(20668741-20670084) | 99.9 | 99.4 | A03 | BnaA03g41250D |
| <i>BjuTT6-2</i> | ZBjuH087J23 | 1514 | A09(27095567-27097080) | 100.0 | 100.0 | A09 | Bra036828 | C08(25256551-25258093) | 98.1 | 97.6 | - | BnaA09g31780D |
| <i>BjuTT6-3</i> | ZBjuH031F14 | 2998 | A09(32529280-32526116) | 94.0 | 98.0 | A09 | Bra007813 | A09_random(3426703-3429867) | 94.7 | 99.8 | A09 | BnaA09g55810D |
| <i>BjuTT6-4</i> | ZBjuH022O18 | 1820 | B03(6099152-6097595) | 93.2 | 98.5 | B03 | - | A09(23688234-23689696) | 80.4 | 92.7 | - | BnaC07g32140D |
| <i>BjuTT6-5</i> | ZBjuH143I07 | 1454 | B08(40828252-40826791) | 99.1 | 98.1 | B08 | - | C07(35957629-35959030) | 96.4 | 91.9 | - | BnaC08g22640D |
| <i>BjuTT7-1</i> | ZBjuH159L04 | 2742 | A10(14358845-14356094) | 89.4 | 99.2 | A10 | Bra009312 | A10(15436550-15439304) | 99.5 | 98.8 | A10 | BnaA10g23330D |
| <i>BjuTT7-2</i> | ZBjuH080O14 | 2989 | B08(28566520-28563560) | 98.6 | 98.4 | B08 | - | C09(47019883-47026924) | 44.4 | 94.1 | - | BnaC09g47980D |
| <i>BjuTT3-1</i> | ZBjuH029J10 | 1556 | A09(10927890-10926334) | 98.3 | 98.3 | A09 | Bra027457 | A09(9168455-9170011) | 99.9 | 100 | A09 | BnaA09g15710D |
| <i>BjuTT3-2</i> | ZBjuH183H13 | 1689 | B06(24256936-24255214) | 96.1 | 99.5 | B06 | - | C09(10927890-10926334) | 92.5 | 94.2 | - | BnaC09g17150D |
| <i>BjuTT18-1</i> | ZBjuH054O02 | 1422 | A01(6887113-6885692) | 98.5 | 98.5 | A01 | Bra013652 | A01(6294305-6295726) | 100 | 100 | A01 | BnaA01g12530D |
| <i>BjuTT18-2</i> | ZBjuH181K08 | 1161 | A03(24797395-24796232) | 96.3 | 96.2 | A03 | Bra019350 | A03(23215394-23216555) | 99.9 | 97.3 | A03 | BnaA03g45610D |
| <i>BjuTT18-3</i> | ZBjuH091K10 | 1143 | B02(37385323-37384165) | 99.2 | 95.3 | B02 | - | C01(9585700-9587061) | 83.9 | 93.8 | - | BnaC01g14310D |
| <i>BjuTT18-4</i> | ZBjuH177N08 | 1152 | B08(43361751-43360600) | 98.1 | 95.8 | B08 | - | C07(39327212-39328382) | 98.4 | 94.2 | - | BnaC07g37670D |
| <i>BjuANR-1</i> | ZBjuH082J01 | 1433 | A01(21514882-21513450) | 99.2 | 99.2 | A01 | Bra021318 | A03_random(5666520-5667956) | 99.7 | 99.2 | A03 | BnaA03g60670D |
| <i>BjuANR-2</i> | ZBjuH148H16 | 1466 | A01(17603658-17602193) | 99.3 | 99.3 | A01 | Bra031403 | A01(1630437-1631902) | 100 | 100 | A01 | BnaA01g36200D |
| <i>BjuANR-3</i> | ZBjuH116E04 | 1499 | B01(22657990-22659506) | 98.6 | 96.8 | B01 | - | C01(28124388-28125894) | 99.5 | 90.5 | - | BnaC01g29820D |
| <i>BjuANR-4</i> | ZBjuH034P21 | 1400 | B08(31434047-31435447) | 99.9 | 99.1 | B08 | - | C04(18894005-18895401) | 99.8 | 94.6 | - | BnaC04g18950D |
| <i>BjuTT10-1</i> | ZBjuH083G18 | 3491 | A02(22971851-22968361) | 99.9 | 98.8 | A02 | Bra020720 | Un_random(41316930-41322490) | 62.8 | 94.9 | - | BnaAnng08030D |

(Continued)

TABLE 3 | Continued

| <i>B. juncea</i> gene | BAC sequenced | Sequence length (bp) | Position in <i>B. rapa</i> / <i>B. nigra</i> reference genome | Coverage (%) | Identity (%) | Putative genome or chromosome | Corresponding <i>B. rapa</i> homolog | Position in <i>B. napus</i> reference genome | Coverage (%) | Identity (%) | Putative genome or chromosome | Corresponding <i>B. napus</i> homolog |
|-----------------------|---------------|----------------------|--|--------------|--------------|-------------------------------|--------------------------------------|--|--------------|--------------|-------------------------------|---------------------------------------|
| <i>BjuTT10-2</i> | ZBjuH055H16 | 2297 | A06(20410060-20412553) | 91.3 | 99.7 | A06 | Bra037510 | A06(205553612-20555918) | 99.6 | 99.2 | A06 | BnaA06g30430D |
| <i>BjuTT10-3</i> | ZBjuH021A16 | 2838 | B06(30198717-30195455) | 87.0 | 97.4 | B06 | - | C02(41316930-41322490) | 51.0 | 91.5 | - | BnaC02g38340D |
| <i>BjuTT10-4</i> | ZBjuH176D10 | 2293 | B08(38281497-20412553) | 98.9 | 99.0 | B08 | - | A06(205553612-20555918) | 99.4 | 93.1 | - | - |
| <i>BjuTT1-1</i> | ZBjuH180A05 | 1761 | A09(18767007-18765243) | 99.8 | 97.5 | A09 | Bra028067 | Un_random(4808305-4809953) | 93.6 | 97.9 | - | BnaAnng02100D |
| <i>BjuTT1-2</i> | ZBjuH147E23 | 1707 | B06(8841257-8839558) | 100 | 97.4 | B06 | - | C06(9366519-9368246) | 98.8 | 93.2 | - | BnaC06g08390D |
| <i>BjuTT2-1</i> | ZBjuH085H24 | 945 | A08(8306171-8305232) | 96.5 | 98.9 | A08 | Bra035532 | A08_random(1033684-1034627) | 100 | 99.5 | A08 | BnaA08g29930D |
| <i>BjuTT2-2</i> | ZBjuH034J15 | 944 | scaffold_500.1(70364-69421) | 100 | 100 | B | - | C08(11760224-11761157) | 98.9 | 93.3 | - | BnaC08g07960D |
| <i>BjuTT8-1</i> | ZBjuH004L18 | 3551 | A09(15769736-15773288) | 80.2 | 97.7 | A09 | Bra037887 | A09(15413735-15417282) | 99.9 | 99.3 | A09 | BnaA09g22810D |
| <i>BjuTT8-2</i> | ZBjuH005J18 | 2788 | B03(8122342-8125109) | 100 | 99.7 | B03 | - | C09(23189158-23191902) | 99.1 | 94.1 | - | BnaC09g24870D |
| <i>BjuTT16-1</i> | ZBjuH130K12 | 1954 | A02(25055704-25053743) | 98.3 | 99.5 | A02 | Bra029365 | Un_random(101450485-101452437) | 99.9 | 99.6 | - | BnaAnng30140D |
| <i>BjuTT16-2</i> | ZBjuH099A21 | 2258 | A03(20961426-20959132) | 92.9 | 99.4 | A03 | Bra013028 | A03(19707165-19709160) | 88.4 | 98.5 | A03 | BnaA03g39500D |
| <i>BjuTT16-3</i> | ZBjuH091L03 | 2004 | A09(3307401-3305402) | 45.1 | 97.6 | A09 | Bra026507 | A09(2642192-2644190) | 99.7 | 98.9 | A09 | BnaA09g05410D |
| <i>BjuTT16-4</i> | ZBjuH098G12 | 1981 | B01(19554897-19552670) | 89.0 | 96.9 | B01 | - | C09(2859965-2861956) | 99.4 | 91.3 | - | BnaC09g04950D |
| <i>BjuTT16-5</i> | ZBjuH094N07 | 2129 | B06(30711288-30713462) | 97.5 | 97.6 | B06 | - | Un_random(101450485-101452437) | 91.7 | 92.1 | - | BnaC02g41690D |
| <i>BjuTT16-6</i> | ZBjuH077C18 | 1980 | B08(41662625-41664607) | 99.8 | 98.1 | B08 | - | C02(44915780-44917790) | 98.5 | 92.6 | - | BnaC02g42240D |
| <i>BjuTTG1-1</i> | ZBjuH130K10 | 1582 | A06(17740552-17739539) | 99.7 | 98.8 | A06 | Bra009770 | A06(18525005-18526105) | 69.6 | 93.9 | A06 | - |
| <i>BjuTTG1-2</i> | ZBjuH129A18 | 1014 | B08(42051009-42049996) | 100 | 98.6 | B08 | - | C07(34623713-34624389) | 66.8 | 92.8 | - | BnaC07g29950D |
| <i>BjuTTG2-1</i> | ZBjuH088A24 | 1516 | A03(8752727-8754251) | 96.4 | 96.0 | A03 | Bra023112 | A03(8032043-8033567) | 99.4 | 97.5 | A03 | BnaA03g17120D |
| <i>BjuTTG2-2</i> | ZBjuH101A24 | 1466 | A05(4037093-4035604) | 96.5 | 97.2 | A05 | Bra005210 | A05(3894221-3895658) | 99.4 | 96.3 | A05 | BnaA05g07220D |
| <i>BjuTTG2-3</i> | ZBjuH063L13 | 1528 | B03(32083362-32081848) | 100 | 97.2 | B03 | - | C03(10964876-10966395) | 99.2 | 93.1 | - | BnaC03g20650D |
| <i>BjuTTG2-4</i> | ZBjuH043G17 | 1501 | B04(5191336-5189901) | 100 | 95.1 | B04 | - | C04(6027042-6028503) | 97.4 | 90.9 | - | BnaC04g08020D |
| <i>BjuTT12-1</i> | ZBjuH047J16 | 2487 | A07(16102336-16104823) | 95.1 | 95.5 | A07 | Bra003361 | A07(14915288-14917797) | 99.1 | 96.9 | A07 | BnaA07g18120D |
| <i>BjuTT12-2</i> | ZBjuH124J12 | 2505 | B04(25039840-25037376) | 98.4 | 92.8 | B04 | - | C06(19784039-19786887) | 87.9 | 94.1 | - | BnaC06g17050D |
| <i>BjuTT19-1</i> | ZBjuH095N01 | 808 | A02(3117740-3118547) | 98.6 | 98.6 | A02 | Bra023602 | A02(1531517-1532324) | 100 | 99.9 | A02 | BnaA02g03440D |
| <i>BjuTT19-2</i> | ZBjuH170C22 | 800 | A10(11678470-11677671) | 99.9 | 99.9 | A10 | Bra008570 | A10(12914260-12915058) | 99.9 | 99.7 | A10 | BnaA10g17440D |
| <i>BjuTT19-3</i> | ZBjuH122M08 | 1030 | B02(33205499-33206525) | 100 | 96.7 | B02 | - | C02(3777795-3778584) | 85.6 | 95.2 | - | BnaC02g07090D |
| <i>TT19-g144296</i> | | 825 | B08(25314277-25313454) | 100 | 99.4 | B08 | - | A10(12914260-12915058) | 96.4 | 91.1 | - | - |



in *Brassica* species, but also facilitates in the functional characterization of each PA gene.

The PA genes in *Arabidopsis* (16) were almost doubled in *B. rapa* (31) and nearly quadrupled in *B. juncea* (55) and *B. napus* (58). The ancestral A, B, and C genomes of the *Brassica* species contributed a comparable number of PA genes. These findings are consistent with mesopolyploid nature of *B. rapa* and the allopolyploid nature of *B. juncea* and *B. napus*, implying that polyploidization plays an important role in expansion of PA genes. However, the number of PA genes in allopolyploid *B. juncea* and *B. napus* does not amount to the sum of PA genes from both ancestral species due to gene loss by genomic fractionation during allopolyploidization. Bra036307 and Bra009770 might have been lost in *B. juncea* and *B. napus*, respectively.

Phylogenetic analysis and genomic localization of *B. juncea* PA genes indicated that 30 and 29 *B. juncea* PA genes were homologous to genes located in the A-genome chromosomes of *B. rapa* and *B. napus*, respectively (Figure S2, Table 3). However, both BESs of 23 and 15 A-genome *B. juncea* PA genes were mapped around the *B. rapa* and *B. napus* genomic position, as mapped by the full-length sequence of the corresponding

genes, respectively (Table 4). The other BESs were mapped to other chromosomes or not detected in the *B. rapa* and *B. napus* reference genome. These findings indicate that although *B. rapa*, *B. juncea*, and *B. napus* have the common A-genome, the chromosomes of each of these species do not harbor the same structure (Zou et al., 2016). On the other hand, assembly of the present reference genomes of *Brassica* species need improving.

For 6 of the annotated PA genes in *B. juncea* GSS, no BAC clones were identified. Sequence analysis revealed that the annotated genes ANR_g228640, ANR_g226654, and TT19_g167454 were false genes or artifacts that arose by misassembled sequences because these annotated genes only contain a part of the protein domains of the corresponding genes and its alignment ratios were significantly lower than other predicted genes (Table S5). No BACs carrying the annotated gene TT4_g135394, TT5_g158015, or TT19_g144296 were detected, most probably because the sequenced fragments amplified from positive BACs were too short to distinguish different members of a gene family (Table 1), or maybe because the primers used in screening the BAC library were not appropriate. In contrast, the cloned *BjuTT4-1*, *BjuTT4-7*, and *BjuTT16-5* genes were not

TABLE 4 | Mapping to the *B. rapa*, *B. nigra*, or *B. napus* reference genome of end sequences of the PA gene carrier BACs from *B. juncea*.

| <i>B. juncea</i> gene | BAC sequenced | Left end | | | Right end | | | Putative Genome or chromosome |
|-----------------------|---------------|-------------|--|--------------|--------------|--|--------------|-------------------------------|
| | | Length (bp) | Position in <i>B. rapa</i> ^a , <i>B. napus</i> ^b or <i>B. nigra</i> reference genome | Identity (%) | Length (bp) | Position in <i>B. rapa</i> ^a , <i>B. napus</i> ^b or <i>B. nigra</i> reference genome | Identity (%) | |
| BjuTT4-1 | ZBjuH187G14 | 1048 | A02(23296428-23295380) ^a A02(22075270-2207756) ^b | 98.9 99.5 | 1113 | A02(23152779-23153899) ^a A02(21892025-21893145) ^b | 97.7 99.6 | A02 |
| BjuTT4-2 | ZBjuH175I06 | 1071 | A02(2363318-2361982) A02(887331-888410) | 97.5 99.6 | 964 | A02(2240655-2241616) A02(755926-756886) | 96.1 99.2 | A02 |
| BjuTT4-3 | ZBjuH037O10 | 1080 | A03(2659211-2658129) A03(2210720-2211802) | 99.0 100 | 587 | A03(2525990-2526576) A03(2079518-2080104) | 99.1 97.5 | A03 |
| BjuTT4-4 | ZBjuH036O12 | 1031 | A10(12537033-12538063) A10(13765877-13766904) | 97.4 98.1 | 1059 | A10(12660016-12669255) A10(13890039-13890915) | 97.8 98.2 | A10 |
| BjuTT4-5 | ZBjuH053C09 | 1062 | B02(31653057-31654113) B03(41773983-41775087) | 94.2 97.5 | 994 | B02(31799935-31798937) Repeat sequence | 95.2 – | B02 B03 |
| BjuTT4-6 | ZBjuH053C08 | 1110 | B08(26731199-26730093) A03(30133579-30132560) | 93.2 98.0 | 1111 1112 | B08(26612733-26613845) A03(30031062-30032157) | 92.3 98.3 | B08 A03 |
| BjuTT4-7 | ZBjuH090K23 | 1065 | Un_random(22402145-22403163) A07(15073257-15074276) | 98.6 97.0 | 926 | A03(28012499-28013608) A09(31899835-31899128) | 97.6 97.4 | A07 |
| BjuTT5-1 | ZBjuH186N11 | 1023 | A07(13943509-13944466) A09(29107181-29106192) | 95.7 99.0 | 948 | A06(7618337-7619247) A09(28952074-28953021) | 97.5 97.3 | A09 |
| BjuTT5-2 | ZBjuH181K10 | 1071 | A09(25510915-25511912) scaffold_30.1(166852-165708) | 98.2 92.5 | 930 | A09_random(28952074-28953021) scaffold_30.1(64946-65862) | 99.1 94.8 | B A03 |
| BjuTT5-3 | ZBjuH080G05 | 997 | A07(2473977-2472803) A07(2765573-2766747) | 96.2 98.0 | 1179 | A03(21939848-21938684) A03(20708198-20709378) | 97.7 98.9 | A03 |
| BjuTT5-4 | ZBjuH106O08 | 1233 | A09(27193799-27193372) Un_random(93706755-93707622) | 96.4 96.9 | 1002 | A09(27076762-27077609) A09(23672668-23672668) | 98.9 92.7 | A09 |
| BjuTT6-1 | ZBjuH058K21 | 1177 | A09(32538591-32537560) A09_random(3439921-3440956) | 97.4 98.7 | 963 | A09(32402616-32403171) A09(28629617-28630172) | 98.6 99.1 | A09 |
| BjuTT6-2 | ZBjuH087J23 | 863 | B03(6156413-6155347) B08(40752199-40753230) | 97.2 96.6 | 1068 | B03(6011976-6012882) B08(40891718-40890578) | 99.1 95.6 | B03 B08 |
| BjuTT6-3 | ZBjuH031F14 | 1036 | A10(14281026-14287855) A10(15377459-15378411) | 94.3 95.4 | 875 | A10(14428932-14428063) Un_random(110160592-110161461) | 99.2 99.1 | A10 |
| BjuTT6-4 | ZBjuH022O18 | 1051 | A10(15377459-15378411) B08(28651670-28650600) | 94.8 99.1 | 1084 | B05(13990978-13992051) A09(10945043-10944178) | 97.5 96.0 | B08 A09 |
| BjuTT6-5 | ZBjuH143I07 | 1034 | A09(10801814-10802675) A09_random(1204329-1205280) | 99.1 99.7 | 902 | A09(9183884-9184783) B06(24372970-24371986) | 97.5 99.9 | A10 B06 |
| BjuTT7-1 | ZBjuH159L04 | 950 | B06(24254316-24255289) A01(6900126-6899636) | 99.9 97.6 | 896 | A01(6775183-6775797) A01_random(376002-376873) | 94.7 96.3 | A01 |
| BjuTT7-2 | ZBjuH080O14 | 1072 | A04(19187764-19188396) A03(24832511-24831559) | 97.2 93.6 | 928 | A03(24707489-24708449) A03_random(1774070-1775012) | 98.2 96.3 | A03 |
| BjuTT7-3 | ZBjuH183H13 | 973 | A03(23248562-23249571) | 95.6 | 928 | | 96.3 | |
| BjuTT8-1 | ZBjuH054O02 | 1063 | | | | | | |
| BjuTT8-2 | ZBjuH181K08 | 1071 | | | | | | |

(Continued)

TABLE 4 | Continued

| <i>B. juncea</i> gene | BAC sequenced | Left end | | | Right end | | | Putative Genome or chromosome |
|-----------------------|---------------|-------------|--|--------------|-------------|--|--------------|-------------------------------|
| | | Length (bp) | Position in <i>B. rapa</i> ^a , <i>B. napus</i> ^b or <i>B. nigra</i> reference genome | Identity (%) | Length (bp) | Position in <i>B. rapa</i> ^a , <i>B. napus</i> ^b or <i>B. nigra</i> reference genome | Identity (%) | |
| BjuTT18-3 | ZBjuH091K10 | 1151 | B02(37271971-37273119) | 99.5 | 1033 | B02(36953007-36952312) | 92.9 | B02 |
| BjuTT18-4 | ZBjuH177ND8 | 1179 | B08(43363553-43362571) | 94.8 | 1036 | Scaffold_215.1 (85454-84890) | 99.1 | B08 |
| BjuANR-1 | ZBjuH082J01 | 981 | A01(21610018-21609039) | 100 | 890 | A01(21496749-21497598) | 93.7 | A01 |
| BjuANR-2 | ZBjuH148H16 | 1088 | A03_random(5751842-5752821) | 98.8 | 996 | A03_random(5660455-5661236) | 98.1 | A01 |
| BjuANR-3 | ZBjuH116E04 | 1136 | A01(17599566-17600642) | 98.5 | 996 | A05(6382585-6383570) | 96.7 | A01 |
| BjuANR-4 | ZBjuH034P21 | 1015 | A01_random(1627810-1628889) | 97.7 | 1143 | C06(11884727-11885709) | 94.0 | B01 |
| BjuTT10-1 | ZBjuH083G18 | 895 | B01(23295810-23295103) | 96.8 | 996 | B01(22662292-22661178) | 93.5 | B08 |
| BjuTT10-2 | ZBjuH055H16 | 998 | B08(31415998-31416996) | 95.1 | 926 | B08(31573791-31572839) | 99.6 | A02 |
| BjuTT10-3 | ZBjuH021A16 | 1006 | A02(22936601-22937747) | 96.8 | 974 | A07(287213-288132) | 82.6 | A06 |
| BjuTT10-4 | ZBjuH176D10 | 1037 | Un_random(20422597-20428316) | 99.7 | 988 | A10(7084906-7085831) | 99.4 | A06 |
| BjuTT1-1 | ZBjuH180A05 | 1064 | A06(20316953-20317946) | 95.7 | 988 | A06(20441440-20440468) | 99.6 | B06 |
| BjuTT1-2 | ZBjuH147E23 | 1021 | A06(20471573-20472569) | 96.0 | 1008 | A06 (20582545-20583508) | 96.9 | B07 |
| BjuTT2-1 | ZBjuH085H24 | 1008 | B06(30166234-30167223) | 92.7 | 888 | B06(30284319-30283311) | 93.7 | A09 |
| BjuTT2-2 | ZBjuH034J15 | 1041 | B07(12155684-12156617) | 99.0 | 880 | B07(12306990-12305968) | 98.1 | B06 |
| BjuTT8-1 | ZBjuH004L18 | 926 | A09(18800232-18799233) | 96.8 | 933 | A09(18714197-18714808) | 95.7 | A08 |
| BjuTT8-2 | ZBjuH005J18 | 923 | Un_random(4883830-4884831) | 96.2 | 974 | Un_random(4606100-4606768) | 95.5 | B |
| BjuTT16-1 | ZBjuH130K12 | 1069 | Scaffold_312.1 (121001-121983) | 97.7 | 962 | Repeat Sequence | - | A09 |
| BjuTT16-2 | ZBjuH099A21 | 973 | Scaffold_000519(4310-5318) | 99.2 | 1046 | A08(8207949-8208882) | 99.3 | A03 |
| BjuTT16-3 | ZBjuH091L03 | 1089 | Scaffold_500.1 (142630-141751) | 99.8 | 1096 | A08(7146333-7147266) | 99.7 | A09 |
| BjuTT16-4 | ZBjuH098G12 | 1116 | Un_random(53133429-53134437) | 98.1 | 1094 | Scaffold_1045.1 (32982-32009) | 99.2 | B03 |
| BjuTT16-5 | ZBjuH094N07 | 1014 | Scaffold_500.1 (142630-141751) | 98.1 | 998 | A09(15796870-15796730) | 91.4 | A02 |
| BjuTT16-6 | ZBjuH077C18 | 1022 | Repeat sequence | - | 1076 | A09(15375879-15376928) | 99.4 | A02 |
| BjuTTG1-1 | ZBjuH130K10 | 1077 | A09(2192731-2193692) | 98.7 | 1073 | B03(8126536-8125803) | 98.5 | A03 |
| BjuTTG1-2 | ZBjuH129A18 | 1083 | B03(6048419-6049250) | 98.0 | 1087 | A02(24938143-24939195) | 97.8 | A06 |
| | | | A02(25075678-25075282) | 84.8 | 1087 | A02(23509181-23510233) | 98.7 | A06 |
| | | | A02(23647099-23647956) | 95.6 | 1087 | A03(21065354-21064524) | 98.1 | A09 |
| | | | A03(20916287-20917258) | 100 | 1087 | A03(19805901-19806859) | 96.9 | A09 |
| | | | Un_random(122117253-122118230) | 99.1 | 1087 | Repeat sequence | - | A09 |
| | | | A09(3425481-3424388) | 96.9 | 1087 | A04(12367561-12368716) | 95.1 | B01 |
| | | | A09(2759676-2760769) | 97.5 | 1087 | B01(19452807-19453868) | 93.9 | B06 |
| | | | B01(19570278-19569159) | 95.7 | 1087 | B06(30721361-30720370) | 95.9 | B08 |
| | | | B06(30590171-30591180) | 98.3 | 1087 | B08(41543305-41544388) | 97.4 | A06 |
| | | | B08(41697103-41696075) | 97.8 | 1087 | Scaffold000172(118821-119882) | 96.3 | B08 |
| | | | A06(17786017-17784921) | 96.1 | 1087 | Un_random(101024139-101025200) | 96.8 | B08 |
| | | | A06(18565145-18566064) | 94.5 | 1087 | B08(42142183-42141110) | 97.3 | B08 |
| | | | B08(41995537-41996211) | 93.2 | 1087 | | | |

(Continued)

TABLE 4 | Continued

| <i>B. juncea</i> gene | BAC sequenced | Left end | | Right end | | Putative Genome or chromosome |
|-----------------------|---------------|-------------|--|-------------|--|-------------------------------|
| | | Length (bp) | Position in <i>B. rapa</i> ^a , <i>B. napus</i> ^b or <i>B. nigra</i> reference genome | Length (bp) | Position in <i>B. rapa</i> ^a , <i>B. napus</i> ^b or <i>B. nigra</i> reference genome | |
| BjuTTG2-1 | ZBjuH088A24 | 1139 | A01(12598037-12597696) C07(93256608-33257744) | 1145 | A03(8757693-87566631) A03(80436552-8044706) | A03 |
| BjuTTG2-2 | ZBjuH101A24 | 1047 | A05(4101759-4100924) A05(3967225-3968262) | 1074 | A05(3964877-3966181) A05(3832372-3833452) | A05 |
| BjuTTG2-3 | ZBjuH063L13 | 1099 | B03(32169026-32168705) | 1080 | B03(32059185-32060257) | B03 |
| BjuTTG2-4 | ZBjuH043G17 | 1094 | B04(5231833-5230759) | 1118 | B04(5118011-5119109) | B04 |
| BjuTT12-1 | ZBjuH047J16 | 1005 | A07(16179990-16178972) A07(14996804-14997785) | 1010 | A07(16062416-16062903) A07(14870425-14871409) | A07 |
| BjuTT12-2 | ZBjuH124J12 | 1057 | B04(24922182-24923204) | 1030 | B04(25075022-25073994) | B04 |
| BjuTT19-1 | ZBjuH095N01 | 1093 | Repeat sequence | 969 | A02(3047112-3048020) | A02 |
| BjuTT19-2 | ZBjuH170C22 | 1054 | Repeat sequence A10(11649528-11650476) | 985 | A02(1465948-1468567) A10(11804011-11803026) | A10 |
| BjuTT19-3 | ZBjuH122M08 | 1033 | A10(12892359-12893412) B02(33362984-33362101) | 888 | C09(43030716-43031727) B02(33197233-33197697) | B02 |

^a Position in *B. rapa* reference genome is listed in the first line. ^b Position in *B. napus* reference genome is listed in the second line.

predicted from our GSS dataset, illustrating that these genes were missed in our genome sequence survey of *B. juncea* genome, most probably because of insufficient sequencing depth or assembly errors.

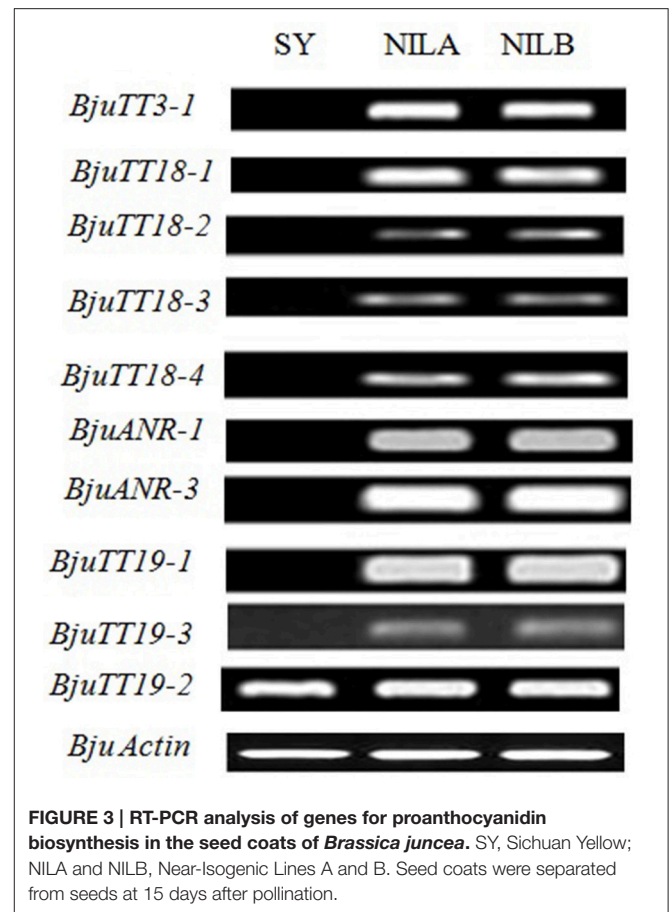
In *Arabidopsis*, three additional PA genes *TT15* (DeBolt et al., 2009), *TT9* (Ichino et al., 2014), and *TT13/aha10* (Appelhaagen et al., 2015) have recently been cloned. Their *Brassica* homologs were not investigated in the present study. In our next study, we will clone and analyze these genes to complete the set of PA genes in *Brassica* spp. Initial screening of our BAC library identified seven BAC clones for each of these three genes. Sequencing of the fragments amplified from these BACs is underway.

RNA-seq and FPKM analyses showed that BnaCnng01290D, BnaA09g29340D, *BjuTT5-1* and *BjuTT5-4* were not expressed in the seed coat, indicating that these genes might not be involved in seed pigmentation. Interestingly, the *BjuTT3*, *BjuTT18*, and *BjuANR* genes were not expressed in yellow-seeded testa, but expressed very high in brown-seeded testa of *B. juncea* (Figure 2, Table S7), which is consistent with previous results (Yan et al., 2008, 2011; Akhov et al., 2009; Liu et al., 2009, 2013; Jiang et al., 2013), suggesting that seed color is determined by expression of genes that encode enzymes that catalyze PA biosynthesis. Concomitant with the absence of expression of these enzyme-encoding genes in yellow-seeded testa, the early stage genes, *BjuTT4-2* and *BjuTT4-3*, which encode chalcone synthase, and transporter genes, *BjuTT19-1* and *BjuTT19-3*, which encode glutathione transferase, were remarkably downregulated or not expressed in yellow-seeded testa (Table S7). These findings illustrate that these genes are co-regulated with *BjuTT3*, *BjuTT18*, and *BjuANR*, and their expression is not essential to the production of biosynthetic substrates and epicatechin transport in yellow-seeded testa. Other *BjuTT19* and *BjuTT4* genes did not show differential expression between yellow- and brown-seeded testa (Figure 2, Table S7), implying that these genes are not involved in seed pigmentation and that their biological roles require further investigation.

To answer the questions why all the *BjuTT3*, *BjuTT18*, and *BjuANR* genes are not fully expressed in yellow-seeded testa and why these genes are mutated, transcriptionally regulated, or both, we also cloned full-length genomic sequences of these genes from SY and compared them with the corresponding sequences from PM. Comparative analysis showed no differences, except for a 33-bp and 2-bp difference in *BjuTT18-2* and *BjuTT3-1*. In *Arabidopsis*, the genes *TT3*, *TT18*, and *ANR* are transcriptionally regulated by TT2-TT8-TTG1 complex (Xu et al., 2013). Comparison between SY and PM uncovered a 1275-bp insertion in exon 7 of *BjuTT8-1* and a C-T transition in exon 7 of *BjuTT8-2* of SY, which is almost in agreement with findings from Padmaja et al. (2014) who speculated that the *TT8* gene controls seed pigmentation in *B. juncea*.

CONCLUSIONS

A total of 55 genes homologous to 16 *Arabidopsis* proanthocyanidin-associated genes were identified and cloned



from *B. juncea*. Approximately 58 and 31 PA genes were detected in *B. napus* and *B. rapa* genome databases. Around 30 of these cloned *B. juncea* genes were located in the A-genome chromosomes, except A04, whereas the remaining 25 were mapped to the B-genome chromosomes, except B05 and B07. A majority of these genes were expressed in the seed coat of *B. juncea* and *B. napus*. Tissue-specific expression of the *TT4*, *TT5*, and *TT19* genes were observed in *B. juncea* and *B. napus*. *BjuTT3*, *BjuTT18*, *BjuANR*, *BjuTT4-2*, *BjuTT4-3*, *BjuTT19-1*, and *BjuTT19-3* were transcriptionally regulated in the seed coat and not expressed or downregulated in yellow-seeded testa. In summary, the present study facilitates in better understanding the molecular mechanism underlying PA accumulation/profile and seed pigmentation, as well as in further characterization of the structure, variations, and functions of PA genes in *Brassica* spp.

AUTHOR CONTRIBUTIONS

ZL and CG designed the research. XL, YL, MY, and DS performed the research and analyzed the data. XH took part in screening of the BAC library. SL and SC provided the genes primers and assisted with sequencing of the BAC clones. ZL and XL

wrote the manuscript. All authors read and approved the final manuscript.

FUNDING

This work was supported by the National Natural Science Foundation of China (No.31101176 and No.31271762).

ACKNOWLEDGMENTS

The authors thank Dr. Meizhong Luo in Huazhong Agricultural University for constructing the *B. juncea* BAC library.

SUPPLEMENTARY MATERIAL

The Supplementary Material for this article can be found online at: <http://journal.frontiersin.org/article/10.3389/fpls.2016.01831/full#supplementary-material>

Figure S1 | The PCR screening systems and process of BAC library.

Screening of a specific clone by five-step PCR is shown: Step 1, screening of 19 superplates: A positive signal was detected in the superplate3 (plates SP 021–030). Steps 2–4, screening against superplate3 by 3D-PCR: Positive signals were identified in 1D, 2D, and 3D; these consisted of Plate034, C15&16, and RI&J, respectively, indicating that Plate034, column 15/16, and row I/J contained the specific BAC DNA. Step 5, screening of four candidate BACs: A positive signal was detected in the one of the four candidate BACs (ZBjuH034115, ZBjuH034116,

ZBjuH034J15, and ZBjuH034J16). Consequently, a BAC clone containing the specific sequence was identified as the clone of ZBjuH034J15.

Figure S2 | Phylogenetic trees of proanthocyanidin-associated genes from *Brassica juncea*, *B. rapa*, *B. napus*, and *Arabidopsis thaliana*. Phylogenetic reconstruction of proanthocyanidin biosynthetic genes from *Brassica juncea*, *Arabidopsis thaliana*, *B. rapa*, and *B. napus*. Phylogenetic trees were constructed from genomic sequences of PA genes using Neighbor-Joining (NJ) algorithm and 1000 bootstrap replications provided in MEGA5.2. (a) TT4; (b) TT5; (c) TT6; (d) TT7; (e) TT3; (f) TT18; (g) ANR; (h) TT10; (i) TT1; (j) TT2; (k) TT8; (l) TT16; (m) TTG1; (n) TTG2; (o) TT12; (p) TT19.

Figure S3 | Sequences of annotated but unidentified proanthocyanidins-associated genes in *Brassica juncea*.

Table S1 | Sequences of the primer pairs used in screening for proanthocyanidin-associated genes of *Brassica juncea* BAC library.

Table S2 | Sequences of the primer pairs used in expression analysis of proanthocyanidin-associated genes of *Brassica juncea*.

Table S3 | Global statistics of the genomic assembly of *Brassica juncea*.

Table S4 | Annotated genes of *Brassica juncea* genome survey sequences (xls).

Table S5 | Annotated proanthocyanidin-associated genes from *Brassica juncea* genome survey sequences (xls).

Table S6 | Mapping to the GSS sequence of full-length sequences of *Brassica juncea* PA genes cloned in this study (xls).

Table S7 | Transcript abundance of proanthocyanidin-associated genes in the transcriptome of *Brassica napus* and *B. juncea* seed coats.

REFERENCES

- Agarwal, P., Parida, S. K., Mahto, A., Das, S., Mathew, I. E., Malik, N., et al. (2014). Expanding frontiers in plant transcriptomics in aid of functional genomics and molecular breeding. *Biotechnol. J.* 9, 1480–1492. doi: 10.1002/biot.201400063
- Akhov, L. A. L., Ashe, P. A. P., Tan, Y. T. Y., Datla, R. D. R., and Selvaraj, G. S. G. (2009). Proanthocyanidin biosynthesis in the seed coat of yellow-seeded, canola quality *Brassica napus* YN01-429 is constrained at the committed step catalyzed by dihydroflavonol 4-reductase. *Botany* 87, 616–625. doi: 10.1139/B09-036
- Appelhaugen, I., Nordholt, N., Seidel, T., Spelt, K., Koes, R., Quattrocchio, F., et al. (2015). TRANSPARENT TESTA 13 is a tonoplast P_{3A}-ATPase required for vacuolar deposition of proanthocyanidins in *Arabidopsis thaliana* seeds. *Plant J.* 82, 840–849. doi: 10.1111/tj.12854
- Appelhaugen, I., Thiedig, K., Nordholt, N., Schmidt, N., Huep, G., Sagasser, M., et al. (2014). Update on transparent testa mutants from *Arabidopsis thaliana*: characterisation of new alleles from an isogenic collection. *Planta* 240, 955–970. doi: 10.1007/s00425-014-2088-0
- Auger, B., Marnet, N., Gautier, V., Maia Grondard, A., Leprince, F., Renard, M., et al. (2010). A detailed survey of seed coat flavonoids in developing seeds of *Brassica napus* L. *J. Agric. Food Chem.* 58, 6246–6256. doi: 10.1021/jf903619v
- Chai, Y. R., Lei, B., Huang, H. L., Li, J. N., Yin, J. M., Tang, Z. L., et al. (2009). TRANSPARENT TESTA 12 genes from *Brassica napus* and parental species: cloning, evolution, and differential involvement in yellow seed trait. *Mol. Genet. Genomics* 281, 109–123. doi: 10.1007/s00438-008-0399-1
- Chalhoub, B., Denoeud, F., Liu, S., Parkin, I. A., Tang, H., Wang, X., et al. (2014). Plant genetics. Early allopolyploid evolution in the post-Neolithic *Brassica napus* oilseed genome. *Science* 345, 950–953. doi: 10.1126/science.1253435
- Chen, G., Deng, W., Peng, F., Truksa, M., Singer, S., Snyder, C. L., et al. (2013). *Brassica napus* TT16 homologs with different genomic origins and expression levels encode proteins that regulate a broad range of endothelium-associated genes at the transcriptional level. *Plant J.* 74, 663–677. doi: 10.1111/tj.12151
- DeBolt, S., Scheible, W. R., Schrick, K., Auer, M., Beisson, F., Bischoff, V., et al. (2009). Mutations in UDP-Glucose:sterol glucosyltransferase in *Arabidopsis* cause transparent testa phenotype and suberization defect in seeds. *Plant Physiol.* 151, 78–87. doi: 10.1104/pp.109.140582
- Deng, W., Chen, G., Peng, F., Truksa, M., Snyder, C. L., and Weselake, R. J. (2012). *Transparent testa 16* plays multiple roles in plant development and is involved in lipid synthesis and embryo development in canola. *Plant Physiol.* 160, 978–989. doi: 10.1104/pp.112.198713
- Deng, W., Wang, Y., Liu, Z., Cheng, H., and Xue, Y. (2014). HemI: a toolkit for illustrating heatmaps. *PLoS ONE* 9:e111988. doi: 10.1371/journal.pone.0111988
- Falcone Ferreyra, M. L., Rius, S. P., and Casati, P. (2012). Flavonoids: biosynthesis, biological functions, and biotechnological applications. *Front. Plant Sci.* 3:222. doi: 10.3389/fpls.2012.00222
- Fang, J., Reichelt, M., Hidalgo, W., Agnolet, S., and Schneider, B. (2012). Tissue-specific distribution of secondary metabolites in Rapeseed (*Brassica napus* L.). *PLoS ONE* 7:e48006. doi: 10.1371/journal.pone.0048006
- Friedt, W., and Snowdon, R. (2009). “Oilseed rape,” in *Oil Crops, Handbook of Plant Breeding*, Vol. 4, eds J. Vollmann and I. Rajcan (New York, NY: Springer), 91–126.
- Guo, N., Cheng, F., Wu, J., Liu, B., Zheng, S., Liang, J., et al. (2014). Anthocyanin biosynthetic genes in *Brassica rapa*. *BMC Genomics* 15:426. doi: 10.1186/1471-2164-15-426
- Hichri, I., Barrieu, F., Bogs, J., Kappel, C., Delrot, S., and Lauvergeat, V. (2011). Recent advances in the transcriptional regulation of the flavonoid biosynthetic pathway. *J. Exp. Bot.* 62, 2465–2483. doi: 10.1093/jxb/erq442
- Hirakawa, H., Okada, Y., Tabuchi, H., Shirasawa, K., Watanabe, A., Tsuruoka, H., et al. (2015). Survey of genome sequences in a wild sweet potato, *Ipomoea trifida* (H. B. K.) G. Don. *DNA Res.* 22, 171–179. doi: 10.1093/dnares/dsv002
- Ichino, T., Fuji, K., Ueda, H., Takahashi, H., Koumoto, Y., Takagi, J., et al. (2014). GFS9/TT9 contributes to intracellular membrane trafficking and flavonoid accumulation in *Arabidopsis thaliana*. *Plant J.* 80, 410–423. doi: 10.1111/tj.12637
- Jiang, J., Shao, Y., Li, A., Lu, C., Zhang, Y., and Wang, Y. (2013). Phenolic composition analysis and gene expression in developing seeds of yellow- and black-seeded *Brassica napus*. *J. Integr. Plant Biol.* 55, 537–551. doi: 10.1111/jipb.12039
- Jiao, Y., Jia, H. M., Li, X. W., Chai, M. L., Jia, H. J., Chen, Z., et al. (2012). Development of simple sequence repeat (SSR) markers from a

- genome survey of Chinese bayberry (*Myrica rubra*). *BMC Genomics* 13:201. doi: 10.1186/1471-2164-13-201
- Kim, D., Perteau, G., Trapnell, C., Pimentel, H., Kelley, R., and Salzberg, S. L. (2013). TopHat2: accurate alignment of transcriptomes in the presence of insertions, deletions and gene fusions. *Genome Biol.* 14:R36. doi: 10.1186/gb-2013-14-4-r36
- Lepiniec, L., Debeaujon, I., Routaboul, J. M., Baudry, A., Pourcel, L., Nesi, N., et al. (2006). Genetics and biochemistry of seed flavonoids. *Annu. Rev. Plant Biol.* 57, 405–430. doi: 10.1146/annurev.arplant.57.032905.105252
- Li, Q., Yin, M., Li, Y., Fan, C., Yang, Q., Wu, J., et al. (2015). Expression of *Brassica napus* TTG2, a regulator of trichome development, increases plant sensitivity to salt stress by suppressing the expression of auxin biosynthesis genes. *J. Exp. Bot.* 66, 5821–5836. doi: 10.1093/jxb/erv287
- Liu, S., Liu, Y., Yang, X., Tong, C., Edwards, D., Parkin, I. A., et al. (2014). The *Brassica oleracea* genome reveals the asymmetrical evolution of polyploid genomes. *Nat. Commun.* 5:3930. doi: 10.1038/ncomms4930
- Liu, X. J., Yuan, M. Z., Guan, C. Y., Chen, S. Y., and Liu, S. Y. (2009). Inheritance, Mapping, and Origin of Yellow-Seeded Trait in *Brassica juncea*. *Acta Agron. Sin.* 35, 839–847. doi: 10.3724/SP.J.1006.2009.00839
- Liu, X., Lu, Y., Yuan, Y., Liu, S., Guan, C., Chen, S., et al. (2013). *De novo* transcriptome of *Brassica juncea* seed coat and identification of genes for the biosynthesis of flavonoids. *PLoS ONE* 8:e71110. doi: 10.1371/journal.pone.0071110
- Lu, Y., Liu, X., Liu, S., Yue, Y., Guan, C., and Liu, Z. (2012). A simple and rapid procedure for identification of seed coat colour at the early developmental stage of *Brassica juncea* and *Brassica napus* seeds. *Plant Breed.* 131, 176–179. doi: 10.1111/j.1439-0523.2011.01914.x
- Luo, M., and Wing, R. A. (2003). An improved method for plant BAC library construction. *Methods Mol. Biol.* 236, 3–20. doi: 10.1385/1-59259-413-1:3
- Martin, L. B., Fei, Z., Giovannoni, J. J., and Rose, J. K. (2013). Catalyzing plant science research with RNA-seq. *Front. Plant Sci.* 4:66. doi: 10.3389/fpls.2013.00066
- Moreno-Hagselsieb, G., and Latimer, K. (2008). Choosing BLAST options for better detection of orthologs as reciprocal best hits. *Bioinformatics* 24, 319–324. doi: 10.1093/bioinformatics/btm585
- Mortazavi, A., Williams, B. A., McCue, K., Schaeffer, L., and Wold, B. (2008). Mapping and quantifying mammalian transcriptomes by RNA-Seq. *Nat. Methods* 5, 621–628. doi: 10.1038/nmeth.1226
- Nesi, N., Lucas, M. O., Auger, B., Baron, C., Lécureuil, A., Guerche, P., et al. (2009). The promoter of the *Arabidopsis thaliana* BAN gene is active in proanthocyanidin-accumulating cells of the *Brassica napus* seed coat. *Plant Cell Rep.* 28, 601–617. doi: 10.1007/s00299-008-0667-x
- Padmaja, L. K., Agarwal, P., Gupta, V., Mukhopadhyay, A., Sodhi, Y. S., Pental, D., et al. (2014). Natural mutations in two homoeologous TT8 genes control yellow seed coat trait in allotetraploid *Brassica juncea* (AABB). *Theor. Appl. Genet.* 127, 339–347. doi: 10.1007/s00122-013-2222-6
- Saito, K., Yonekura-Sakakibara, K., Nakabayashi, R., Higashi, Y., Yamazaki, M., Tohge, T., et al. (2013). The flavonoid biosynthetic pathway in *Arabidopsis*: structural and genetic diversity. *Plant Physiol. Biochem.* 72, 21–34. doi: 10.1016/j.plaphy.2013.02.001
- Schmieder, R., and Edwards, R. (2011). Quality control and preprocessing of metagenomic datasets. *Bioinformatics* 27, 863–864. doi: 10.1093/bioinformatics/btr026
- Senda, M., Kurauchi, T., Kasai, A., and Ohnishi, S. (2012). Suppressive mechanism of seed coat pigmentation in yellow soybean. *Breed. Sci.* 61, 523–530. doi: 10.1270/jsbs.61.523
- Stanke, M., and Waack, S. (2003). Gene prediction with a hidden Markov model and a new intron submodel. *Bioinformatics* 19(Suppl. 2), ii215–ii225. doi: 10.1093/bioinformatics/btg1080
- Tamura, K., Peterson, D., Peterson, N., Stecher, G., Nei, M., and Kumar, S. (2011). MEGA5: molecular evolutionary genetics analysis using maximum likelihood, evolutionary distance, and maximum parsimony methods. *Mol. Biol. Evol.* 28, 2731–2739. doi: 10.1093/molbev/msr121
- Velasco, L., and Fernandez-Martínez, J. (2009). “Other brassicas,” in *Oil Crops, Handbook of Plant Breeding*, Vol. 4, eds J. Vollmann and I. Rajcan (New York, NY: Springer), 127–153.
- Velasco, R., Zharkikh, A., Troggio, M., Cartwright, D. A., Cestaro, A., Pruss, D., et al. (2007). A high quality draft consensus sequence of the genome of a heterozygous grapevine variety. *PLoS ONE* 2:e1326. doi: 10.1371/journal.pone.0001326
- Wang, X., Wang, H., Wang, J., Sun, R., Wu, J., Liu, S., et al. (2011). The genome of the mesopolyploid crop species *Brassica rapa*. *Nat. Genet.* 43, 1035–1039. doi: 10.1038/ng.919
- Weber, A. P. (2015). Discovering new biology through sequencing of RNA. *Plant Physiol* 169, 1524–1531. doi: 10.1104/pp.15.01081
- Wei, Y. L., Li, J. N., Lu, J., Tang, Z. L., Pu, D. C., and Chai, Y. R. (2007). Molecular cloning of *Brassica napus* TRANSPARENT TESTA 2 gene family encoding potential MYB regulatory proteins of proanthocyanidin biosynthesis. *Mol. Biol. Rep.* 34, 105–120. doi: 10.1007/s11033-006-9024-8
- Winkel-Shirley, B. (2001). Flavonoid biosynthesis. A colorful model for genetics, biochemistry, cell biology, and biotechnology. *Plant Physiol.* 126, 485–493. doi: 10.1104/pp.126.2.485
- Xu, W., Grain, D., Le Gourrierec, J., Harscoet, E., Berger, A., Jauvion, V., et al. (2013). Regulation of flavonoid biosynthesis involves an unexpected complex transcriptional regulation of TT8 expression, in *Arabidopsis*. *New Phytol.* 198, 59–70. doi: 10.1111/nph.12142
- Yan, M., Liu, X., Guan, C., Liu, L., Xiang, J., Lu, Y., et al. (2014). Cloning of TTG1 gene and PCR identification of genomes A, B and C in *Brassica* species. *Genetica* 142, 169–176. doi: 10.1007/s10709-014-9764-7
- Yan, M. L., Liu, X. J., Guan, C. Y., Chen, X. B., and Liu, Z. S. (2011). Cloning and expression analysis of an anthocyanidin synthase gene homolog from *Brassica juncea*. *Mol. Breed.* 28, 313–322. doi: 10.1007/s11032-010-9483-4
- Yan, M. L., Liu, X. J., Liu, Z. S., Guan, C. Y., Yuan, M. Z., and Xiong, X. H. (2008). Cloning and expression analysis of Dihydroflavonol 4-Reductase gene in *Brassica juncea*. *Acta Agron. Sin.* 34, 1–7. doi: 10.3724/SP.J.1006.2008.00001
- Yang, J., Song, N., Zhao, X., Qi, X., Hu, Z., and Zhang, M. (2014). Genome survey sequencing provides clues into glucosinolate biosynthesis and flowering pathway evolution in allotetraploid *Brassica juncea*. *BMC Genomics* 15:107. doi: 10.1186/1471-2164-15-107
- Yang, K., Jeong, N., Moon, J. K., Lee, Y. H., Lee, S. H., Kim, H. M., et al. (2010). Genetic analysis of genes controlling natural variation of seed coat and flower colors in soybean. *J. Hered.* 101, 757–768. doi: 10.1093/jhered/esq078
- Yi, J., Derynck, M. R., Chen, L., and Dhaubhadel, S. (2010). Differential expression of *CHS7* and *CHS8* genes in soybean. *Planta* 231, 741–753. doi: 10.1007/s00425-009-1079-z
- Zhang, J., Lu, Y., Yuan, Y., Zhang, X., Geng, J., Chen, Y., et al. (2009). Map-based cloning and characterization of a gene controlling hairiness and seed coat color traits in *Brassica rapa*. *Plant Mol. Biol.* 69, 553–563. doi: 10.1007/s11103-008-9437-y
- Zhang, K., Lu, K., Qu, C., Liang, Y., Wang, R., Chai, Y., et al. (2013). Gene silencing of *BnTT10* family genes causes retarded pigmentation and lignin reduction in the seed coat of *Brassica napus*. *PLoS ONE* 8:e61247. doi: 10.1371/journal.pone.0061247
- Zou, J., Hu, D., Liu, P., Raman, H., Liu, Z., Liu, X., et al. (2016). Co-linearity and divergence of the A subgenome of *Brassica juncea* compared with other *Brassica* species carrying different A subgenomes. *BMC Genomics* 17:18. doi: 10.1186/s12864-015-2343-1

Conflict of Interest Statement: The authors declare that the research was conducted in the absence of any commercial or financial relationships that could be construed as a potential conflict of interest.

Copyright © 2016 Liu, Lu, Yan, Sun, Hu, Liu, Chen, Guan and Liu. This is an open-access article distributed under the terms of the Creative Commons Attribution License (CC BY). The use, distribution or reproduction in other forums is permitted, provided the original author(s) or licensor are credited and that the original publication in this journal is cited, in accordance with accepted academic practice. No use, distribution or reproduction is permitted which does not comply with these terms.