



Corrigendum: Digital Gene Expression Analysis of *Populus simonii* × *P. nigra* Pollen Germination and Tube Growth

Li-Juan Zhao^{1,2}, Hong-Mei Yuan³, Wen-Dong Guo⁴ and Chuan-Ping Yang^{1*}

¹ State Key Laboratory of Tree Genetics and Breeding, Northeast Forestry University, Harbin, China, ² Department of Crop Molecular Breeding, Crop Breeding Institute, Heilongjiang Academy of Agricultural Sciences, Harbin, China, ³ Medical Plant Research Center, Economic Crop Institute, Heilongjiang Academy of Agricultural Sciences, Harbin, China, ⁴ Biotechnology Research Center, Institute of Natural Resources and Ecology, Heilongjiang Academy of Sciences, Harbin, China

Keywords: *Populus simonii* × *P. nigra* pollen, pollen germination, pollen tube growth, transcription, DGE, differentially expressed genes

OPEN ACCESS

Edited and reviewed by:

Ramin Yadegari,
University of Arizona, USA

*Correspondence:

Chuan-Ping Yang
yangcp01@163.com

Specialty section:

This article was submitted to
Plant Genetics and Genomics,
a section of the journal
Frontiers in Plant Science

Received: 01 July 2016

Accepted: 05 July 2016

Published: 19 July 2016

Citation:

Zhao L-J, Yuan H-M, Guo W-D and
Yang C-P (2016) Corrigendum: Digital
Gene Expression Analysis of *Populus
simonii* × *P. nigra* Pollen Germination
and Tube Growth.
Front. Plant Sci. 7:1056.
doi: 10.3389/fpls.2016.01056

A corrigendum on

Digital Gene Expression Analysis of *Populus simonii* × *P. nigra* Pollen Germination and Tube Growth

by Zhao, L-J., Yuan, H-M., Guo, W-D., Yang, C-P. (2016). *Front. Plant Sci.* 7:825. doi: 10.3389/fpls.2016.00825

Reason for Corrigendum:

There was a mistake in the color of the arrow of Figure 1A as published. Red arrows should be white and white arrows should be red in Figure 1A. The corrected **Figure 1** is below. The authors apologize for the mistake. This error does not change the scientific conclusions of the article in any way.

AUTHOR CONTRIBUTIONS

CY designed experiment. LZ carried out experiments, analyzed experimental results, and wrote the manuscript. HY assisted with results analysis. WG assisted with organizing figures and tables.

Conflict of Interest Statement: The authors declare that the research was conducted in the absence of any commercial or financial relationships that could be construed as a potential conflict of interest.

Copyright © 2016 Zhao, Yuan, Guo and Yang. This is an open-access article distributed under the terms of the Creative Commons Attribution License (CC BY). The use, distribution or reproduction in other forums is permitted, provided the original author(s) or licensor are credited and that the original publication in this journal is cited, in accordance with accepted academic practice. No use, distribution or reproduction is permitted which does not comply with these terms.

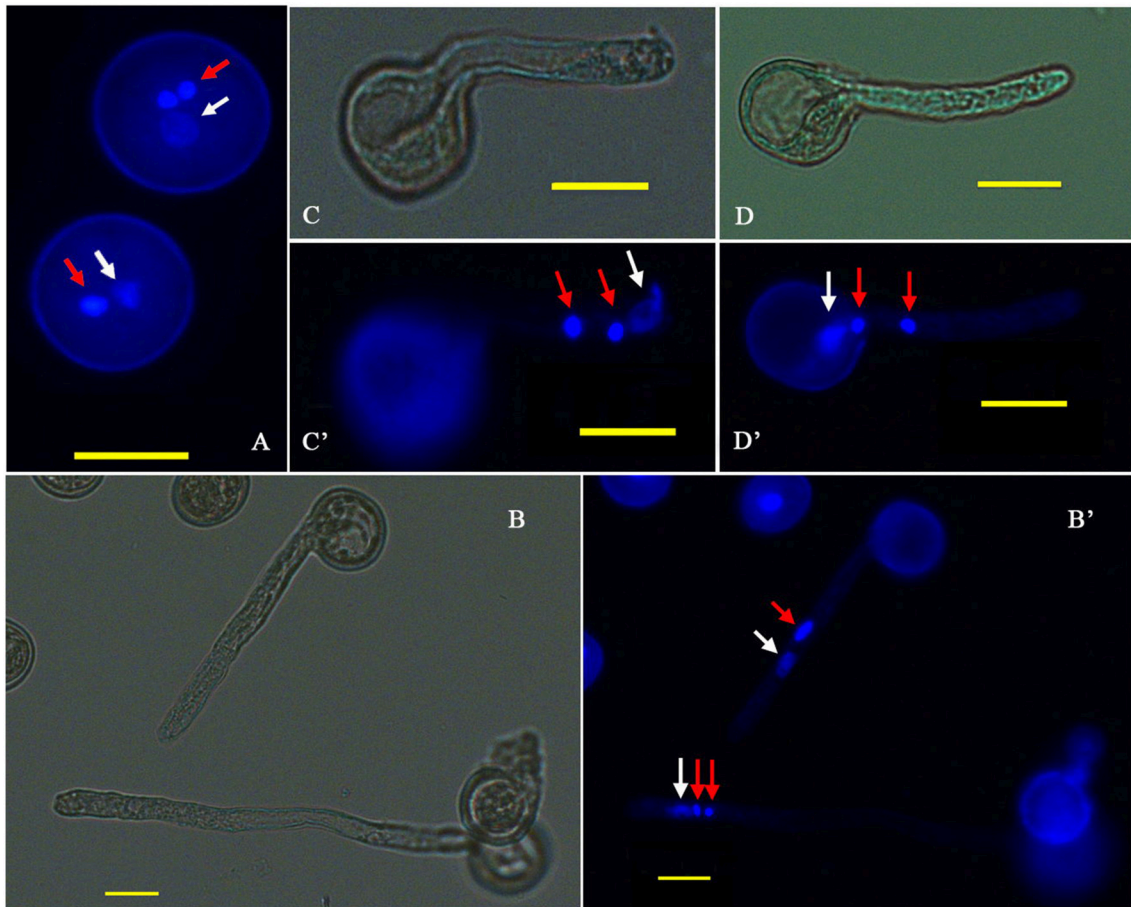


FIGURE 1 | Cytological observation of *P. simonii* × *P. nigra* PG and PTG. (A) DAPI fluorescence image of two-celled and three-celled pollen. **(B,B')** Bright-field and DAPI fluorescence images of the two and three nuclei states in the tube; red arrows show generative nuclei or two sperm nuclei, and white arrows show vegetative nuclei. **(C,C')** Bright-field and DAPI fluorescence images, respectively, of the vegetative nucleus leading the sperm nucleus into the PT. **(D,D')** Bright-field and DAPI fluorescence images, respectively, of two sperm nuclei moving into the tube before the vegetative nucleus.