



Alternative Oxidase Pathway Optimizes Photosynthesis During Osmotic and Temperature Stress by Regulating Cellular ROS, Malate Valve and Antioxidative Systems

Challabathula Dinakar^{1,2}, Abhaypratap Vishwakarma¹, Agepati S. Raghavendra¹ and Kollipara Padmasree^{3*}

¹ Department of Plant Sciences, School of Life Sciences, University of Hyderabad, Hyderabad, India, ² Department of Life Sciences, School of Basic and Applied Sciences, Central University of Tamil Nadu, Thiruvavur, India, ³ Department of Biotechnology and Bioinformatics, School of Life Sciences, University of Hyderabad, Hyderabad, India

OPEN ACCESS

Edited by:

Zhulong Chan,
Wuhan Botanic Garden, Chinese
Academy of Sciences, China

Reviewed by:

Adriano Nunes-Nesi,
Universidade Federal de Viçosa, Brazil
Donato Pastore,
University of Foggia, Italy

*Correspondence:

Kollipara Padmasree
kpssl@uohyd.ernet.in;
kpssl@uohyd.ac.in

Specialty section:

This article was submitted to
Plant Physiology,
a section of the journal
Frontiers in Plant Science

Received: 03 October 2015

Accepted: 15 January 2016

Published: 09 February 2016

Citation:

Dinakar C, Vishwakarma A,
Raghavendra AS and Padmasree K
(2016) Alternative Oxidase Pathway
Optimizes Photosynthesis During
Osmotic and Temperature Stress by
Regulating Cellular ROS, Malate Valve
and Antioxidative Systems.
Front. Plant Sci. 7:68.
doi: 10.3389/fpls.2016.00068

The present study reveals the importance of alternative oxidase (AOX) pathway in optimizing photosynthesis under osmotic and temperature stress conditions in the mesophyll protoplasts of *Pisum sativum*. The responses of photosynthesis and respiration were monitored at saturating light intensity of 1000 $\mu\text{moles m}^{-2} \text{s}^{-1}$ at 25°C under a range of sorbitol concentrations from 0.4 to 1.0 M to induce hyper-osmotic stress and by varying the temperature of the thermo-jacketed pre-incubation chamber from 25 to 10°C to impose sub-optimal temperature stress. Compared to controls (0.4 M sorbitol and 25°C), the mesophyll protoplasts showed remarkable decrease in NaHCO_3 -dependent O_2 evolution (indicator of photosynthetic carbon assimilation), under both hyper-osmotic (1.0 M sorbitol) and sub-optimal temperature stress conditions (10°C), while the decrease in rates of respiratory O_2 uptake were marginal. The capacity of AOX pathway increased significantly in parallel to increase in intracellular pyruvate and reactive oxygen species (ROS) levels under both hyper-osmotic stress and sub-optimal temperature stress under the background of saturating light. The ratio of redox couple (Malate/OAA) related to malate valve increased in contrast to the ratio of redox couple (GSH/GSSG) related to antioxidative system during hyper-osmotic stress. Further, the ratio of GSH/GSSG decreased in the presence of sub-optimal temperature, while the ratio of Malate/OAA showed no visible changes. Also, the redox ratios of pyridine nucleotides increased under hyper-osmotic (NADH/NAD) and sub-optimal temperature (NADPH/NADP) stresses, respectively. However, upon restriction of AOX pathway by using salicylhydroxamic acid (SHAM), the observed changes in NaHCO_3 -dependent O_2 evolution, cellular ROS, redox ratios of Malate/OAA, NAD(P)H/NAD(P) and GSH/GSSG were further aggravated under stress conditions with concomitant modulations in NADP-MDH and antioxidant enzymes. Taken together, the results indicated the importance of AOX pathway in optimizing photosynthesis under both hyper-osmotic stress and sub-optimal temperatures. Regulation of ROS through redox couples related to malate valve and antioxidant system by AOX pathway to optimize photosynthesis under these stresses are discussed.

Keywords: alternative oxidase, cytochrome oxidase, photosynthesis, reactive oxygen species, respiration, salicylhydroxamic acid

INTRODUCTION

The mitochondrial oxidative electron transport chain in higher plants is branched at ubiquinone, leading to cyanide sensitive cytochrome oxidase (COX) and cyanide resistant alternative oxidase (AOX) pathways (Millar et al., 2011). The COX pathway transfers electrons from ubiquinone to molecular O₂ through complex III and complex IV and generates a proton gradient which is coupled to ATP synthesis. The electron transport through AOX pathway is mediated by a quinol oxidase and uncoupled from ATP synthesis. However, energy is liberated as heat when the AOX pathway is operative (Day and Wiskich, 1995; Siedow and Umbach, 2000; Schertl and Braun, 2014; Pu et al., 2015). Although, AOX catalyzes the energy-wasteful respiration, its (up) regulation in terms of activity, engagement and expression during development and biotic/abiotic stresses indicates its physiological importance other than thermogenesis (Fung et al., 2006; Matos et al., 2007; Giraud et al., 2008; Arnholdt-Schmitt, 2009; Vanlerberghe et al., 2009; Fu et al., 2010; Florez-Sarasa et al., 2011; Cvetkovska and Vanlerberghe, 2013; Vishwakarma et al., 2014; Garmash et al., 2015; Rogov and Zvyagilskaya, 2015).

Mitochondrial functions contribute to the metabolic flexibility that is essential for plant cells to adjust to highly variable environment (Vanlerberghe, 2013). The functioning of AOX pathway through hand-in-hand cooperation with COX pathway to optimize photosynthetic metabolism (Padmasree and Raghavendra, 1999a,b,c, 2001a,b; Yoshida et al., 2006; Feng et al., 2007; Strodtkötter et al., 2009; Dinakar et al., 2010a,b; Florez-Sarasa et al., 2011; Bailleul et al., 2015; Vishwakarma et al., 2015) and its active participation in balancing carbon/nitrogen availability with sink capacity or antioxidant defense system has added new dimensions to its existence in leaf cells (Parsons et al., 1999; Vanlerberghe et al., 2002; Sieger et al., 2005; Umbach et al., 2005; Yoshida et al., 2007; Gandin et al., 2009, 2014; Dahal et al., 2014). Thus the relative contribution of COX and AOX pathways to total respiration is known to be flexible and dependant on environmental conditions (Gonzalez-Meler et al., 1999; Searle et al., 2011; Liu et al., 2015).

Water stress affects various parameters including stomatal conductance, root growth, leaf number, total leaf area, photosynthetic quantum yield, ATP, NADPH synthesis and the utilization of assimilates (Vandoorne et al., 2012; Cano et al., 2014; Esmaeilpour et al., 2015) along with the partitioning of electrons between the COX and AOX pathways (Ribas-Carbo et al., 2005). There is a considerable ambiguity in the partitioning of electrons between these pathways. In soybean and wheat, water stress caused a significant shift of electrons from the COX to the AOX pathway while in leaves of bean and pepper water stress decreased SHAM-resistant respiration, with no effect on cyanide-resistant respiration (Gonzalez-Meler et al., 1997; Ribas-Carbo et al., 2005; Vassileva et al., 2009). Several other studies suggested that changes in electron partitioning between the two respiratory pathways under a given stress were mostly due to the decrease in the activity of the COX pathway rather than an increase in the activity of the AOX pathway (Peñuelas et al., 1996; Lambers et al., 2005; Galle et al., 2010). An increase in the

expression of AOX genes and its activity in photosynthetic tissues has been reported in plants subjected to low/high temperatures (Vanlerberghe and McIntosh, 1992a,b; Fiorani et al., 2005; Wang et al., 2011) or water stress (Bartoli et al., 2005; Ribas-Carbo et al., 2005). Several reports proposed that the AOX pathway maintains electron flow during cold conditions to alleviate the cellular reactive oxygen species (ROS; Purvis et al., 1995; Armstrong et al., 2008; Grabelnych et al., 2014). The ability of AOX pathway to maintain flux in the cold was suggested to be due to (i) its reduced sensitivity to temperature as compared to COX pathway (Kiener and Bramlage, 1981; McNulty and Cummins, 1987; Stewart et al., 1990b) and (ii) an increase in the *de novo* synthesis of AOX protein (Stewart et al., 1990a,b; Vanlerberghe and McIntosh, 1992a; Gonzalez-Meler et al., 1999; Ribas-Carbo et al., 2000). However, the studies of Kühn et al. (2015) suggested that any decrease in electron flux through the COX or AOX pathways trigger common as well as distinct cellular responses which are in-turn dependent on the growth conditions.

Osmotic and temperature stresses are common abiotic stresses to which plants are frequently exposed under conditions of drought and flooding/frost in natural environment. Long term exposure to any biotic or abiotic stress conditions may cause cellular damage and cell death in susceptible plants. However, during short term exposure, the plants adapt or acclimatize to these stress conditions by various mechanisms. Intracellular adjustments like alteration in redox status, ROS and antioxidant levels, particularly mediated by mitochondria are essential for plant cells to acclimatize with changing environmental conditions to maintain redox homeostasis (Foyer and Noctor, 2003, 2005; Baier and Dietz, 2005; Gechev et al., 2006; Noctor, 2006; Navrot et al., 2007; Noctor et al., 2007; Dinakar et al., 2010a; Scheibe and Dietz, 2012; Tripathy and Oelmüller, 2012; Vishwakarma et al., 2014, 2015; Considine et al., 2015; Deng et al., 2015; Sevilla et al., 2015; Zhao et al., 2015). Also, it is intriguing to know that the same parameters were found to be crucial in mediating the beneficial interactions between chloroplasts and mitochondria to optimize photosynthetic carbon assimilation under optimal light and CO₂ (Padmasree and Raghavendra, 1999c; Dinakar et al., 2010a; Yoshida et al., 2011). However, it is not clear which pathway (COX or AOX) of mitochondrial electron transport would play a crucial role in optimizing photosynthesis under hyper-osmotic stress or sub-optimal temperature stress. Therefore, the present study was performed using mesophyll protoplasts of pea as the model system to examine the importance of AOX pathway over COX pathway and its coordination with malate valve and glutathione redox system in regulating cellular ROS to optimize photosynthesis under hyper-osmotic and sub-optimal temperature stresses.

MATERIALS AND METHODS

Plant Material and Isolation of Mesophyll Protoplasts

Pea plants (*Pisum sativum* L. cv. Arkel; seeds obtained from Pocha seeds, Pune, India) were grown outdoors under

natural photoperiod of approximately 12 h and average daily temperatures of 30°C day/20°C night. The second pair of fully expanded leaves were picked from 8 to 10 days old plants and were used for isolating mesophyll protoplasts. About 10 pairs of leaves were excised from the plants and mesophyll protoplasts were isolated from leaf strips devoid of lower epidermis by enzymatic digestion with 2% (w/v) Cellulase Onozuka R-10 and 0.2% (w/v) Macerozyme R-10 (Yakult Honsha Co. Ltd, Nishinomiya, Japan), under low light intensities of 50–100 $\mu\text{mol m}^{-2} \text{s}^{-1}$. The protoplasts were collected by filtration through 60 μm nylon filter and purified by centrifugation at 100 g for 5 min, thrice at 4°C. The protoplasts were finally stored on ice in a suspension medium containing 10 mM Hepes-KOH, pH 7.0, 0.4 M sorbitol, 1.0 mM CaCl_2 , and 0.5 mM MgCl_2 until further use and chlorophyll was estimated (Padmasree and Raghavendra, 1999a). The purity of protoplast preparation normally ranged from 90 to 97%.

Stress Treatments

Mesophyll protoplasts equivalent to 12 μg Chl were subjected to hyper-osmotic stress or sub-optimal temperature stress under a saturating light intensity (1000 $\mu\text{mol m}^{-2} \text{s}^{-1}$) in the pre-incubation chamber by increasing (step wise) the concentration of sorbitol in the pre-incubation medium from 0.4 M (isotonic) to 1.0 M (hypertonic) or by decreasing the temperature in pre-incubation chamber from 25°C to 10°C using a refrigerated circulatory water bath (Julabo F10) for 10 min, respectively (Dinakar et al., 2010b). Protoplast samples pre-incubated at 1000 $\mu\text{mol m}^{-2} \text{s}^{-1}$, 25°C temperature and 0.4 M sorbitol were treated as controls (Saradadevi and Raghavendra, 1994). NaHCO_3 (1.0 mM) is added to the pre-incubation media so as to avoid photorespiration and associated O_2 burst. The composition of the pre-incubation medium used were same as that of reaction medium (other than sorbitol) described in Dinakar et al. (2010b).

Monitoring Total Respiration and Photosynthesis

After hyper-osmotic and temperature stress treatments in the presence or absence of SHAM, mesophyll protoplasts equivalent to 10 μg Chl were transferred from pre-incubation chamber to Clark-type oxygen electrode cuvette and the total rates of respiration and photosynthesis (carbon assimilation/PS II activity) were measured polarographically in a reaction medium as described in Dinakar et al. (2010a). In controls, as the rates of respiratory O_2 uptake and photosynthetic O_2 evolution attained steady state after 3 min in dark and 4 min after switching on light, respectively, we restricted to monitor respiration and photosynthesis during steady state for 5 and 10 min, in the dark and light, respectively, using a Clark type oxygen electrode system, controlled by Hansa-Tech software at 25°C. Saturating light (1000 $\mu\text{mol m}^{-2} \text{s}^{-1}$) was provided by a 35 mm slide projector (with xenophot [halogen] lamp, 24 V/150 W). The photosynthetic carbon assimilation rates were measured as NaHCO_3 (1.0 mM) dependent O_2 evolution and PS II activity was measured as *p*-BQ-dependent (1.0 mM) O_2 evolution in the presence of an uncoupler (5 mM NH_4Cl).

Oxygen content (253 μM) in the electrode chamber was pre-calibrated at 25°C with air saturated water using sodium dithionate.

Capacity of COX and AOX Pathway

The capacity of AOX pathway was determined as the O_2 uptake sensitive to 10 mM SHAM in the presence of 1 mM KCN (Vanlerberghe et al., 2002), while the capacity of COX pathway was determined as the O_2 uptake sensitive to 1 mM KCN in the presence of both 10 mM SHAM and 1 μM carbonyl cyanide *m*-chlorophenylhydrazone (CCCP, an uncoupler) as adenylates determine the flux of electrons through COX pathway (Dinakar et al., 2010a,b).

Protein Extraction and Immunodetection

After stress treatments, mesophyll protoplasts equivalent to 10 μg Chl were withdrawn and centrifuged at 100 g for 1 min. The pelleted protoplasts were snap frozen in liquid nitrogen and homogenized in 125 mM Tris-HCl (pH 6.8) containing 5% (w/v) SDS and 1 mM PMSF. The homogenate was centrifuged at 10,000 g for 10 min. Protein estimation was done according to the method of Lowry et al. (1951). SDS-PAGE of mesophyll protoplast proteins was performed according to Laemmli (1970). The proteins separated on 12.5% SDS-PAGE were transferred electrophoretically from the gel onto polyvinylidene difluoride (PVDF) membranes (Towbin et al., 1979). The blots were probed with 1:100 dilution of D1 antibodies (Agriseria, Vännäs, Sweden) followed by 1:5000 dilution of goat antirabbit IgG alkaline phosphatase conjugate and developed using nitro-blue-tetrazolium chloride and 5-bromo-4-chloro-3-indolyl phosphate as substrates.

Detection of Reactive Oxygen Species (ROS)

Intracellular production of ROS was measured by using a non polar fluorescent dye 2, 7, -dichlorofluorescein diacetate ($\text{H}_2\text{DCF-DA}$), which is converted to membrane – impermeable polar derivative H_2DCF by cellular esterases and rapidly oxidized to highly fluorescent DCF by intracellular H_2O_2 and other peroxides. Mesophyll protoplasts loaded with 5 μM $\text{H}_2\text{DCF-DA}$ (Dinakar et al., 2010a) were subjected to hyper-osmotic and sub-optimal temperature stress for 10 min at saturating light intensities (1000 $\mu\text{mol m}^{-2} \text{s}^{-1}$). Immediately, after stress treatments, DCF fluorescence of mesophyll protoplasts was measured by using a Hitachi F-4010 fluorescence spectrophotometer with excitation and emission wavelengths set at 488 and 525 nm, respectively. DCF fluorescence of protoplasts pre-incubated under a saturating light intensity (1000 $\mu\text{mol m}^{-2} \text{s}^{-1}$) at 25°C and 0.4 M sorbitol were treated as controls.

Quantification of Pyruvate and Adenylates

After stress treatments at saturating light, the metabolic reactions of mesophyll protoplasts were quenched with HClO_4 as described in Padmasree and Raghavendra (1999a). The samples

neutralized with KOH were centrifuged at 7000 g and the cleared supernatant was used for estimation of pyruvate, ATP and ADP. The intracellular levels of pyruvate were measured spectrophotometrically using enzymatic assay coupled to NADH oxidation as described in Dinakar et al. (2010b). Similarly, the ATP levels were measured using enzymatic assay coupled to NADPH formation while the ADP levels were measured by coupling to NADH utilization (Padmasree and Raghavendra, 1999a).

Quantification of Malate and OAA

After exposure to stress treatments in the presence and absence of SHAM, at saturating light, aliquots of mesophyll protoplasts equivalent to 100 μg Chl ml^{-1} were quenched with HClO_4 and snap frozen in liquid nitrogen. After neutralization, the samples were centrifuged at 100 g and the supernatant was used for the estimation of intracellular levels of malate and OAA spectrophotometrically. The malate was estimated by incubating the supernatant for 10 min at 25°C in the reaction medium containing 100 mM Tris-HCl, 630 mM hydrazine sulfate, 1.0 mM EDTA pH 9.0, 1.5 mM NAD. The reaction is initiated by the addition of 30U MDH as the concentration of malate is proportional to the amount of NAD reduced at 340 nm (Heineke et al., 1991). Further, the cellular levels of oxaloacetate was calculated from the equation of $[(\text{oxoglutarate}) \times (\text{aspartate})]/[(\text{glutamate}) \times (6.61)]$, as suggested by Heineke et al. (1991) based on the equilibrium of glutamate oxaloacetate transaminase (GOT; $K = 6.61$, Veech et al., 1969). The levels of oxoglutarate, aspartate and glutamate were determined as described in Bergmeyer (1983) by enzymatic assays coupled to NAD(H) oxidation or reduction.

Quantification of GSH and GSSG

After stress treatments in the presence and absence of SHAM, protoplast samples equivalent to 100 μg Chl were withdrawn and mixed immediately with 7% sulfosalicylic acid and snap frozen in liquid nitrogen. The samples were thawed and centrifuged for 10 min. 20 μl of 7.5 M triethanolamine was added to the supernatant to neutralize the samples. Total, oxidized, reduced glutathione was determined spectrophotometrically at 412 nm by the cycling method described by Griffith (1980).

Quantification of NAD(P) and NAD(P)H

Mesophyll protoplasts equivalent to 25 μg Chl were withdrawn from the pre-incubation chamber with and without SHAM after the stress treatments. The samples were centrifuged at 3000 g for 2 min and the pelleted protoplasts were homogenized either in 0.2 N HCl or in 0.2 M NaOH for NAD(P)⁺ and NAD(P)H extraction, respectively. The homogenate was centrifuged at 10,000 g for 10 min at 4°C. The supernatant was boiled for 1 min and rapidly cooled on ice. For NAD(P)⁺ measurement the final pH of supernatant was brought between 5.0 and 6.0, while for NAD(P)H measurement the final pH was adjusted between 7.0 and 8.0. Pyridine nucleotides were quantified by monitoring phenazine methosulfate-catalyzed reduction of dichlorophenolindophenol (Queval and Noctor, 2007). For NAD⁺ and NADH assay, the reaction was started by the addition

of ethanol in presence of alcohol dehydrogenase. On the other hand, for NADP⁺ and NADPH assay, the reaction was started by addition of Glucose-6-phosphate dehydrogenase in the presence of Glucose-6-phosphate. The decrease in A_{600} was monitored for 3 min and concentrations of corresponding pyridine nucleotides were calculated using relevant standards (Vishwakarma et al., 2015).

Assay of NADP-MDH

Mesophyll protoplasts equivalent to 40 μg Chl were withdrawn from the pre-incubation chamber with and without SHAM after the stress treatments. NADP-dependent MDH was extracted and assayed according to Dutilleul et al. (2003). The NADP-MDH was extracted in buffer containing 25 mM HEPES-KOH (pH 7.5), 10 mM MgSO_4 , 1 mM Na_2EDTA , 5 mM DTT, 1 mM phenylmethylsulfonyl fluoride, 5% (w/v) insoluble polyvinylpyrrolidone, and 0.05% (v/v) Triton X-100. The homogenate was centrifuged for 5 min at 10,000 g (4°C). The actual NADP-MDH activity was measured directly from supernatant (2.5 μg chl) in assay buffer. Assay buffer was comprised of 25 mM Tricine-KOH (pH 8.3), 150 mM KCl, 1 mM EDTA, 5 mM DTT, 0.2 mM NADPH, and 2 mM oxaloacetate, plus sample. To fully activate the enzyme, supernatant (2.5 μl chl) was pre-incubated for 30 min at 25°C in 40 mM Tricine-KOH (pH 9.0), 0.4 mM Na_2EDTA , 120 mM KCl, 100 mM DTT, and 0.0025% (v/v) Triton X-100. After incubation, 2 mM oxaloacetate and 0.2 mM NADPH were added into total reaction volume and activity was measured at 340 nm.

Assay of Superoxide Dismutase (SOD; E.C. 1.15.1.1), Catalase (CAT; E.C. 1.11.1.6), and Glutathione Reductase (GR; E.C. 1.6.4.2)

Mesophyll protoplasts equivalent to 100 μg Chl in 600 μl were withdrawn from the pre-incubation chamber with and without SHAM after the stress treatments. The samples were centrifuged at 100 g for 1 min and the pelleted protoplasts were snap frozen in liquid nitrogen. The samples were homogenized in 50 mM phosphate buffer pH 7.0 containing 1 mM PMSF and centrifuged at 10,000 g for 10 min. The supernatant was used for enzymatic assays of superoxide dismutase (SOD), catalase (CAT), and glutathione reductase (GR). The protein concentration in the enzyme extracts were determined by Lowry et al. (1951) using defatted BSA as standard. The SOD activity was determined following the method of Beauchamp and Fridovich (1971). CAT activity was measured spectrophotometrically by following the oxidation of H_2O_2 at 240 nm according to the method of Patterson et al. (1984) and GR activity was determined by modifying the method of Jiang and Zhang (2001). Others details were followed as described in Dinakar et al. (2010a).

Replications

The data presented are the average values of results ($\pm\text{SE}$) from at least four repetitions conducted on different days. The differences between treatments were analyzed by one-way ANOVA, Student–Newman–Keuls method of multiple

comparison analysis using SigmaStat 3.1 software (San Jose, CA, USA).

RESULTS

Photosynthetic Carbon Assimilation and Respiration in Mesophyll Protoplasts Pre-incubated Under Hyper-Osmoticum and Sub-Optimal Temperatures at Saturating Light

In the study, the effect of hyper-osmotic stress and sub-optimal temperature stress on photosynthetic carbon assimilation (NaHCO_3 -dependent O_2 evolution) and respiration (O_2 uptake) was monitored in mesophyll protoplasts under light. The O_2 evolution rates ($182.5 \pm 3 \mu\text{mol mg}^{-1} \text{Chl h}^{-1}$) observed at 0.4 M sorbitol (isotonic) at 25°C in light (control) declined remarkably upto $\leq 42\%$ as the concentration of sorbitol was increased to 1.0 M (Figure 1A). In contrast, the rates of O_2 uptake ($12.12 \pm 1.3 \mu\text{mol mg}^{-1} \text{Chl h}^{-1}$) observed at 0.4 M sorbitol at 25°C temperature (control) decreased marginally by 7% of control with increase in sorbitol concentration to 1.0 M (Figure 1B). Similarly, any decrease in temperature of pre-illumination chamber at 0.4 M sorbitol in light also showed a profound effect on rates of O_2 evolution as compared to rates of O_2 uptake. Mesophyll protoplasts pre-incubated at 10°C showed

a remarkable decrease in O_2 evolution rates ($\leq 49\%$) while the decrease in O_2 uptake rates ($\leq 13\%$) were marginal as compared to control (Figures 1C,D).

Effects of Hyper-Osmotic Stress and Sub-Optimal Temperature Stress on the Capacity of COX and AOX Pathways

Although the effects of hyper-osmotic stress and sub-optimal temperature stress on total respiratory O_2 uptake of mesophyll protoplasts were marginal, the *in vivo* rates of COX (COX capacity) and AOX (AOX capacity) pathways were modulated significantly. In mesophyll protoplasts which were exposed to increasing sorbitol concentration at 25°C in saturating light, the capacity of COX pathway was decreased drastically by 77%, while the capacity of AOX pathway was stimulated by 70% at 1.0 M sorbitol as compared to protoplasts in 0.4 M sorbitol at 25°C under saturating light (Figure 2A). A similar trend was observed in response to sub-optimal temperature stress. With decreasing temperature under 0.4 M sorbitol at saturating light, the capacity of COX pathway of mesophyll protoplasts decreased remarkably by $\leq 76\%$ and the AOX pathway increased significantly by ≤ 1.2 fold at 10°C as compared to protoplasts pre-incubated at 25°C under saturating light (Figure 2B). Since the decrease in COX capacity and the increase in AOX capacity were maximum at 1.0 M sorbitol and 10°C temperature, in all further experiments, the stress

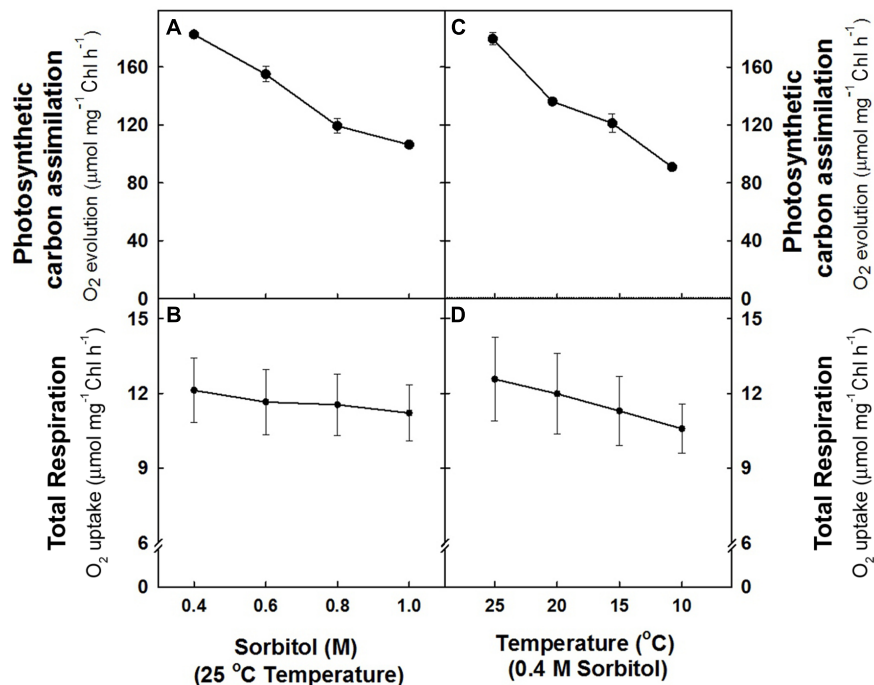


FIGURE 1 | The rates of photosynthetic O_2 evolution (A,C) and total respiration (B,D) in mesophyll protoplasts of pea pre-incubated for 10 min at a saturating light intensity of $1000 \mu\text{mol m}^{-2} \text{s}^{-1}$ under different concentrations of sorbitol (0.4 to 1.0 M) in the reaction media at 25°C and at different temperatures (25 – 10°C) at 0.4 M sorbitol in the reaction media. After exposing the mesophyll protoplasts to different osmotic and temperature treatments in light, the respiratory rates were measured for 5 min in darkness. The photosynthesis rates were measured as NaHCO_3 -dependent (1.0 mM) O_2 evolution for 10 min in light ($1000 \mu\text{mol m}^{-2} \text{s}^{-1}$) using Clark-type oxygen electrode.

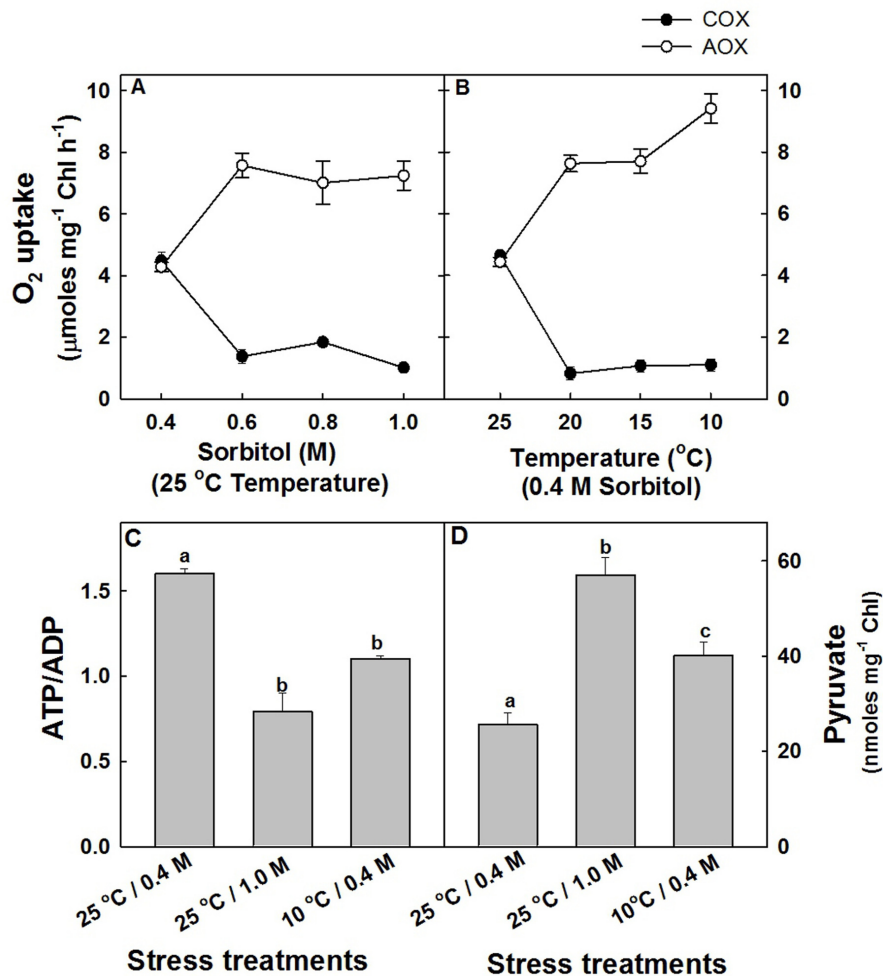


FIGURE 2 | The capacity of COX and AOX pathways of mitochondrial electron transport chain in mesophyll protoplasts of pea pre-incubated for 10 min at a saturating light intensity of $1000 \mu\text{mol m}^{-2} \text{s}^{-1}$ under different concentrations of sorbitol (0.4 to 1.0 M) in the reaction media at 25 °C (A) and at different temperatures (25 to 10 °C) under 0.4 M sorbitol (B). The open circles indicate the AOX pathway capacity while the closed circles indicate the COX pathway capacity. The changes in intracellular ATP/ADP (C) and pyruvate levels (D) in mesophyll protoplasts pre-incubated under 0.4 M (control), 1.0 M sorbitol (osmotic stress) at 25 °C and 0.4 M sorbitol at 10 °C (temperature stress) respectively, at a saturating light intensity of $1000 \mu\text{mol m}^{-2} \text{s}^{-1}$ for 10 min. Values represent the mean (\pm SE) of four experiments and different letters represent values that are statistically different (ANOVA test, $p \leq 0.05$).

treatments were restricted to 1.0 M sorbitol at 25 °C to impose hyper-osmotic stress and at 10 °C under 0.4 M sorbitol to impose sub-optimal temperature stress under the background of light.

In light, as most of the cellular demands for ATP are met by COX pathway activity, the changes in adenylates (ATP, ADP, and ATP/ADP) which act as a proof of changes in COX pathway capacity were analyzed (Supplementary Figure S1 and Figure 2C). A decrease in ATP/ADP levels at both hyper-osmotic stress (51%) and sub-optimal temperature stress (31%) positively correlated with the decrease in COX pathway capacity (Figure 2C). Similarly, the intracellular concentration of pyruvate which is one among the important factors known to stimulate the activity of AOX are increased significantly by 2.22-fold and 56% at hyper-osmotic stress and sub-optimal temperature stress, respectively (Figure 2D).

Effect of Restriction of AOX Pathway on Total Respiration, Photosynthetic Carbon Assimilation and PSII Activities Under Osmotic and Temperature Stress in Light

The respiratory O₂ uptake rates of mesophyll protoplasts decreased marginally ($\leq 13\%$) after pre-incubation under hyper-osmotic stress or sub-optimal temperature stress at saturating light as compared to the rates under 0.4 M sorbitol at 25 °C in light (control). Pre-incubation of samples in the presence of SHAM further decreased the rates of respiratory O₂ uptake up to 14%, both under hyper-osmotic stress and sub-optimal temperature stress, respectively (Figure 3A). In contrast to respiration, the NaHCO₃-dependent photosynthetic O₂ evolution rates were decreased remarkably by 42% and 49%, respectively, under hyper-osmotic stress and sub-optimal temperature stress when

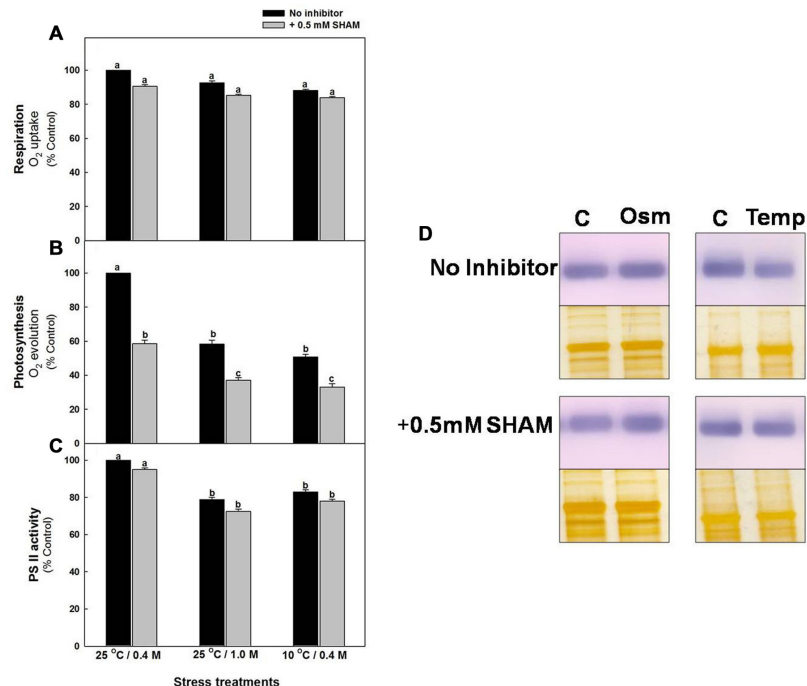


FIGURE 3 | Effect of 0.5 mM SHAM on respiration (A), photosynthesis (B) and PS II activity (C) measured in mesophyll protoplasts pre-incubated under control, osmotic and temperature stress conditions with or without 0.5 mM SHAM. Different letters represent values that are statistically different (ANOVA test, $P \leq 0.05$). **(D)** Western blot analysis of D1 protein (32 kDa) from mesophyll protoplasts pre-incubated at a saturating light intensity of $1000 \mu\text{mol m}^{-2} \text{s}^{-1}$ under 0.4 M sorbitol (control, **C**) 1.0 M sorbitol (osmotic stress; Osm) and 0.4 M sorbitol at 10°C (temperature stress; Temp) for 10 min in the presence and absence of 0.5 mM SHAM. After the treatments mesophyll protoplasts were homogenized in the extraction buffer and the proteins (8 μg) were separated on SDS-PAGE. Proteins were transferred to PVDF membranes and were probed with the antibodies raised against D1. Equal loading of protein was confirmed by silver staining of a duplicate gel.

compared with control and the decrease was significantly aggravated to 67% upon addition of SHAM under both osmotic or temperature stress conditions (Figure 3B).

Similar to photosynthetic carbon assimilation, PSII activity of mesophyll protoplasts decreased by <21% of control upon exposure to hyper-osmotic stress or sub-optimal temperature stress and the decrease was aggravated up to <28% with addition of SHAM under both osmotic and temperature stress (Figure 3C). D1 protein, an important component of PS II showed marginal changes under sub-optimal temperature stress as compared to control, while the changes under 1.0 M sorbitol over-lapping with SHAM were negligible (Figure 3D).

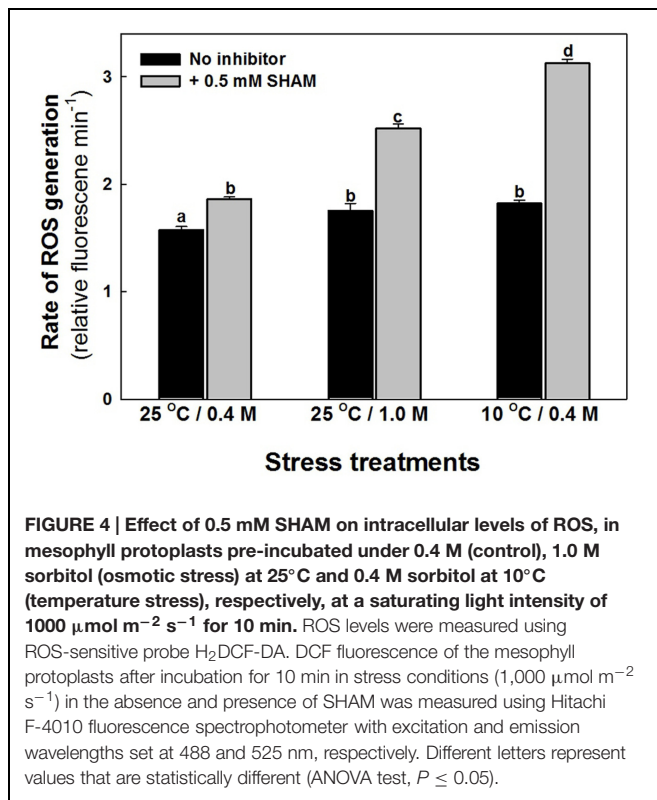
Effect of Restriction of AOX Pathway on Total Cellular ROS Levels and Redox Ratios Under Hyper-Osmotic Stress and Sub-Optimal Temperature Stress in Light

The intracellular ROS levels of mesophyll protoplasts are increased marginally as compared to control when preincubated under hyper-osmotic stress or sub-optimal temperature stress (Figure 4). Parallel to the effect on photosynthesis, the increase in ROS levels were aggravated significantly on super-imposition of SHAM with hyper-osmotic and sub-optimal temperature stresses (Figure 4).

Any intracellular increase in malate/OAA ratio suggests an imbalance of malate valve, operated to export the photochemically generated reducing equivalents that are in excess of the Calvin cycle requirement (Heineke et al., 1991; Atkin et al., 2000; Scheibe et al., 2005). The malate/OAA ratios of mesophyll protoplasts increased by 79% and 4%, respectively, as compared to control under hyper-osmotic stress or sub-optimal temperature stress and the increase was aggravated significantly upon superimposition with SHAM, under both hyper-osmotic (2.5-fold) and sub-optimal temperature (27%) stresses (Supplementary Figure S2 and Figure 5A).

The changes in the redox state of glutathione (an important component of Ascorbate-glutathione cycle) as indicated by the GSH/GSSG levels were decreased by 47% and 30%, respectively, upon treatment with hyper-osmotic stress or sub-optimal temperature stress (Supplementary Figure S3; Figure 5B). However, the decrease was more pronounced upon superimposition with SHAM in presence of sub-optimal temperature stress when compared with hyper-osmotic stress (Figure 5B). Increase in GSSG levels during stress conditions indicates the oxidation of GSH (Supplementary Figure S3).

The role of AOX pathway in regulating cellular redox homeostasis during hyper-osmotic and sub-optimal temperature stress conditions was also determined by monitoring the changes in the redox couples related to pyridine nucleotides:

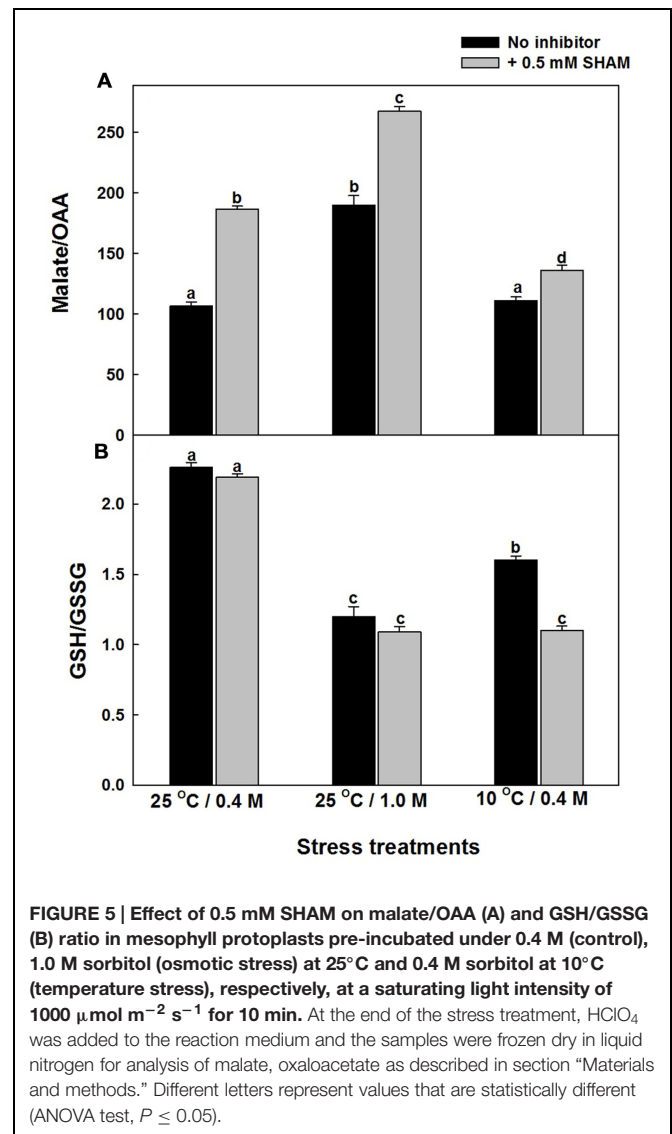


NADH/NAD⁺ and NADPH/NADP⁺ in the absence and presence of SHAM (Supplementary Figures S4 and S5; **Figures 6A,B**). In spite of the significant increase in NADH and NAD⁺, the increase in NADH/NAD⁺ were marginal even after treatment with SHAM under both hyper-osmotic stress or sub-optimal temperature stress (Supplementary Figure S4 and **Figure 6A**). A similar trend in increase of NADPH and NADP⁺ was observed with and without SHAM under hyper-osmotic or sub-optimal temperature stress (Supplementary Figure S5). But, in contrast to redox ratio of NADH/NAD⁺, the redox ratio of NADPH/NADP⁺ increased significantly under sub-optimal temperature stress and was further aggravated upon treatment with SHAM (**Figure 6B**).

Effect of SHAM on the Activities of NADP-MDH and Antioxidant Enzymes During Hyper-Osmotic Stress and Sub-Optimal Temperature Stress in Light

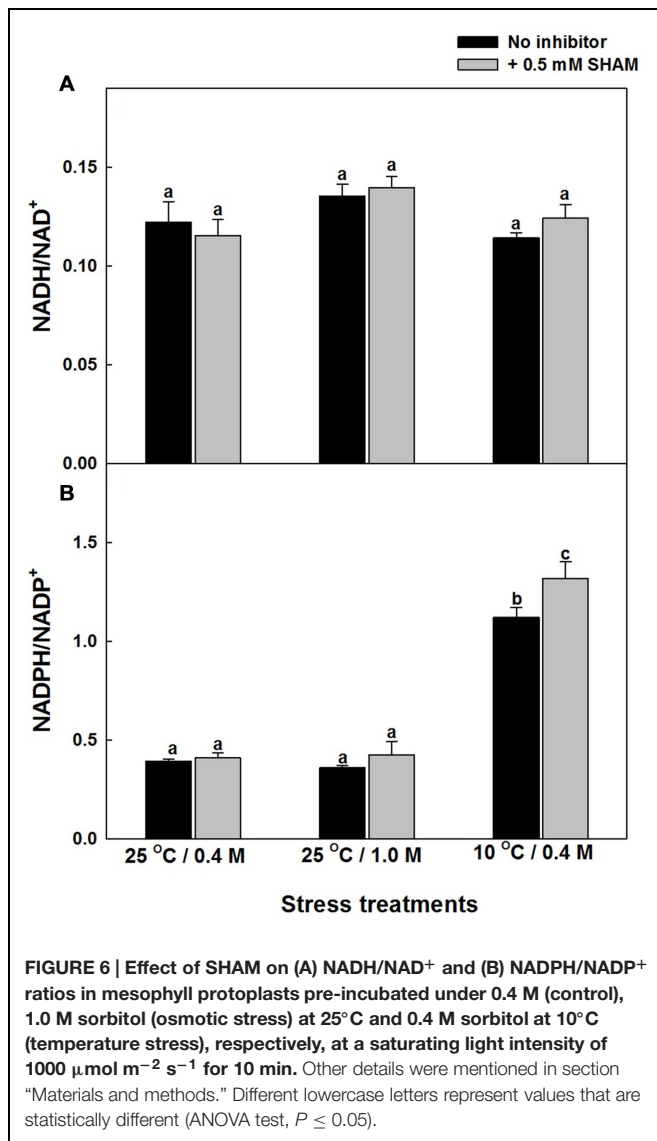
The changes in the actual activity of NADP dependent MDH, associated with malate valve was marginal upon treatment of mesophyll protoplasts with hyper-osmotic stress or sub-optimal temperature stress in the absence and presence of SHAM. But, the maximal activity of NADP-MDH was more pronounced upon treatment with SHAM when compared to samples in the absence of SHAM at both hyper-osmotic and sub-optimal temperature stress (**Figures 7A,B**).

The effect of hyper-osmotic and sub-optimal temperature stresses on the activities of antioxidative system, particularly



those of ROS generating SOD and ROS scavenging CAT as well as GR, which is involved in ROS scavenging by utilizing redox equivalents were analyzed in the presence and absence of SHAM. The changes in SOD activities were marginal in presence of both stresses examined. However, upon superimposition with SHAM, there was a pronounced increase in the activity of SOD in presence of sub-optimal temperature stress but not under hyper-osmotic stress (**Figure 8A**). Contrary to SOD activity, the activity of CAT increased significantly by 60% as compared to control under hyper-osmotic stress, while the changes were negligible under 10°C temperature. Also, the superimposition of SHAM increased the activity of catalase furthermore under both stresses (**Figure 8B**). The activity of GR decreased under 1.0 M sorbitol, while changes were negligible under 10°C temperature. Nevertheless, the changes were marginal on superimposition with SHAM under both the given stresses (**Figure 8C**).

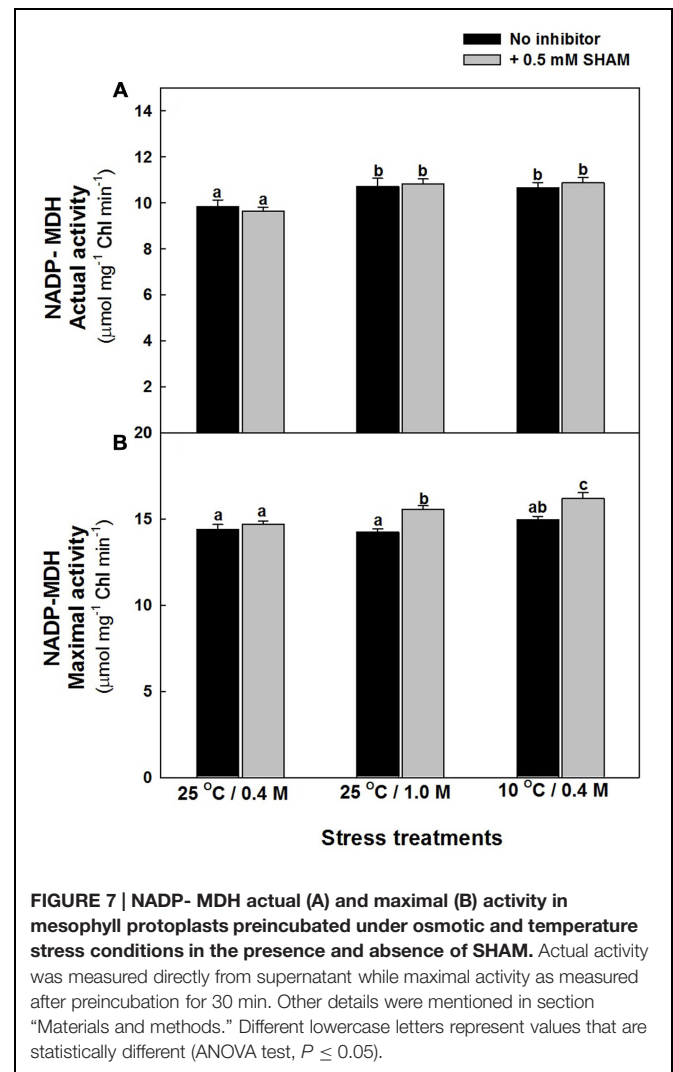
Taken together, the results from the present study demonstrate that the AOX pathway play a significant role in optimizing



photosynthesis by regulating cellular ROS through redox couples related to malate valve, antioxidative system and pyridine nucleotides.

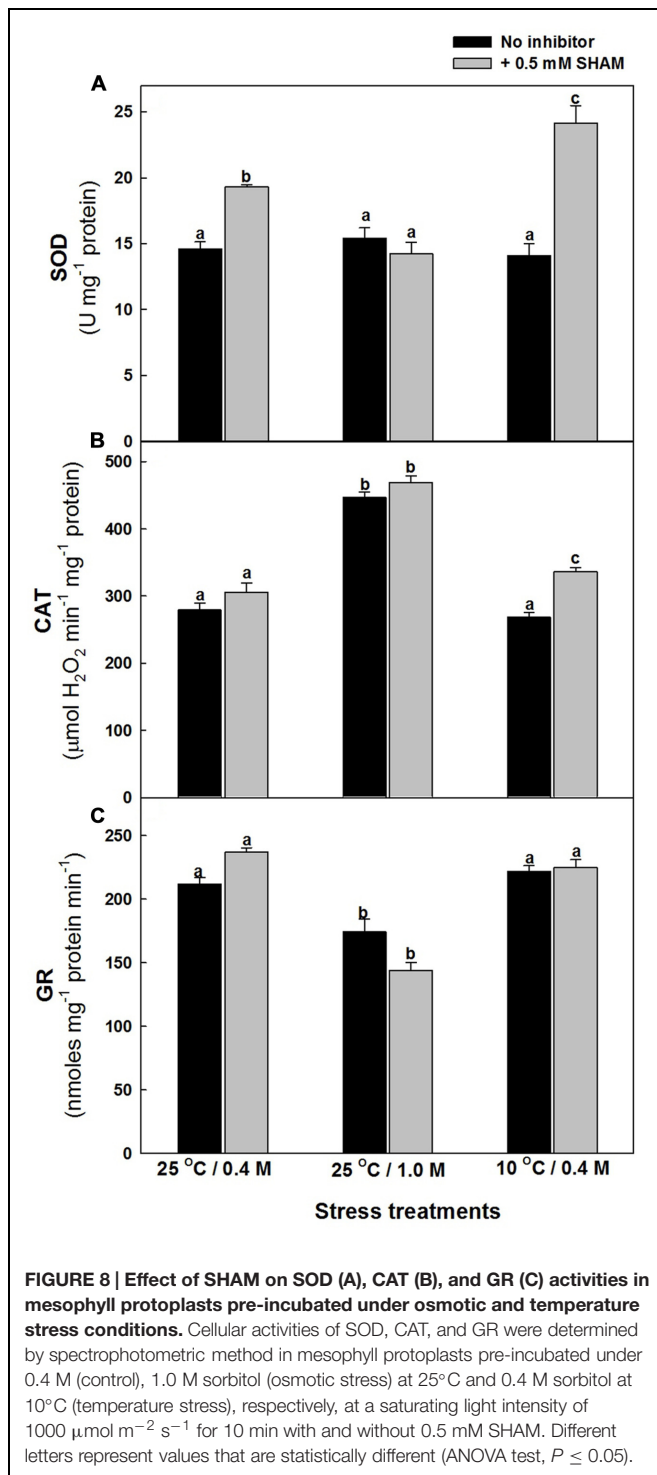
DISCUSSION

Chloroplasts and mitochondria are the key organelles that are involved in meeting the energy demands and maintaining the redox homeostasis (Griffin and Turnbull, 2012). Therefore, the metabolic interactions between these organelles through cytosol and/or peroxisomes are mutually beneficial to each other and though reported earlier are still being actively investigated under different biotic and environmental cues (Raghavendra et al., 1994; Krömer, 1995; Padmasree et al., 2002; Raghavendra and Padmasree, 2003; Fernie et al., 2004; Noguchi and Yoshida, 2008; Huang et al., 2013; Sunil et al., 2013; Vanlerberghe, 2013; Shaw and Kundu, 2015). Several of these studies indicated



that a marginal interference in electron transport through COX or AOX pathways of mitochondrial electron transport chain using metabolic inhibitors and transgenic mutants/reverse genetic approaches caused a significant drop in photosynthetic carbon assimilation at optimal/limiting CO₂, saturating/sub-saturating/highlight and optimal/sub-optimal growth conditions, thereby signifying the importance of mitochondrial electron transport for optimizing photosynthesis (Krömer et al., 1993; Padmasree and Raghavendra, 1999a; Dutilleul et al., 2003; Yoshida et al., 2006; Dinakar et al., 2010a,b; Araújo et al., 2014). The most recent study on diatoms using metabolic inhibitors AA and SHAM as well as knockouts of AOX also demonstrated that the export of reducing power generated in the plastid to mitochondria and the import of mitochondrial ATP into plastid is mandatory for optimized carbon fixation and their growth (Bailleul et al., 2015).

Mesophyll protoplasts can be used as an excellent model system over whole plants, leaves or leaf discs to study beneficial interactions between chloroplasts and mitochondria for the following reasons: (i) allow free diffusion of O₂ and CO₂ which



minimizes the artifacts associated with stomatal patchiness, (ii) devoid of intercellular spaces and cell walls, major hurdles for the passage of metabolic inhibitors/activators and (iii) allow usage of metabolic inhibitors at low concentrations and (iv) allow monitoring of metabolic processes quickly (Padmasree and Raghavendra, 1999a,b,c; Strodtkötter et al., 2009; Dinakar et al., 2010a,b). Under the chosen conditions of isolation, the mesophyll

protoplasts did not show any damage or loss in integrity of plasma membrane when stored on ice for several hours. The oxygen evolution rates were steady up to 30 min at 25°C and 0.4 M sorbitol, under light intensity of 1000 μmol m⁻² s⁻¹ (data not shown; Saradadevi and Raghavendra, 1994). However, they tend to lose their stability upon prolonged incubation at room temperature. Further, the light intensity applied to attain maximal rates of photosynthesis is known to vary in mesophyll protoplasts isolated from different leaves (Riazunnisa et al., 2007; Dinakar et al., 2010a,b). Considering these factors, we restricted the study to a total time period of <30 min which include: hyper-osmoticum (or) sub-optimal temperature stress treatment in light for '10 min'; followed by a '5 min' respiratory O₂ uptake in darkness and subsequently '10 min' photosynthetic O₂ evolution in light, to monitor the effect of stress on respiration and photosynthesis (Figures 1A–D). In spite of the known non-specific effects of SHAM, it is frequently used to assess the role of AOX. It is easily permeable through the plasma membrane and at the concentration (0.5 mM) used in the present study, it neither affected photosynthesis nor ROS in isolated chloroplasts (Padmasree et al., 2002; Dinakar et al., 2010a; Bailleul et al., 2015). While our previous studies emphasized on the importance of COX and AOX pathways in optimizing photosynthesis (Padmasree and Raghavendra, 1999a,b,c, 2001a,b; Strodtkötter et al., 2009; Dinakar et al., 2010a; Vishwakarma et al., 2015) and protecting photosynthesis from photoinhibition under high light (Saradadevi and Raghavendra, 1992; Dinakar et al., 2010b; Vishwakarma et al., 2014), the present study demonstrates the importance of AOX pathway in optimizing photosynthesis under hyper-osmotic and sub-optimal temperature stresses.

Hyper-Osmoticum and Sub-Optimal Temperature Treatment Caused Marked Reduction in Photosynthetic Carbon Assimilation but not in Total Respiration

The responses of photosynthesis and respiration in mesophyll protoplasts varied when pre-incubated under hyper-osmoticum or sub-optimal temperature stresses. The results indicated that the optimal conditions to achieve maximum photosynthetic performance (carbon assimilation) and respiratory rates in mesophyll protoplasts as indicated by rates of NaHCO₃-dependent O₂ evolution and O₂ uptake, respectively, were found to be at an osmoticum of 0.4 M sorbitol and a temperature of 25°C under a light background of 1000 μmol m⁻² s⁻¹ (data not shown).

Any deviation from the optimized conditions, i.e., increasing the sorbitol concentration from 0.4 to 1.0 M (or) decreasing the temperature from 25 to 10°C, lead to a significant reduction in photosynthetic carbon assimilation while the changes in dark respiration are minimal (Figures 1A–D). Since the plasma membrane of protoplasts was found to be intact after the short-term hyper-osmotic stress and sub-optimal temperature stress treatments (data not shown), the significant decrease in photosynthetic O₂ evolution is considered as a direct effect of stress on photosynthetic performance. Berkowitz and Gibbs (1983) using the system of isolated chloroplasts showed

that hyper-osmotic stress caused inactivation of light activated chloroplastic enzymes like RuBisCo and fructose-1,6-bisphatase due to acidification of stroma induced by low osmotic potential. Therefore, the decrease in light activation of the enzymes might be responsible for the decreased photosynthetic O₂ evolution rates observed in the present study under stress conditions.

In cold sensitive hibiscus plants, cold stress treatment (10°C) caused reduction in the light dependent electron transport reactions thereby causing decreased photosynthesis suggesting the sensitivity of the photosynthetic system to cold temperatures (Parades and Quiles, 2015). In another study Krause et al. (1988) showed the impairment of thylakoid membranes along with the inhibition of PS I and PS II in frost damaged leaves thereby affecting photosynthesis. In mesophyll protoplasts isolated from the non-hardened and cold acclimated plants, differential responses were seen. While photosynthetic CO₂ assimilation, chlorophyll fluorescence emission and activities of thylakoids were affected in protoplasts isolated from non-hardened plants, in cold acclimated plants the responses were normal. Inhibition of the light activation of light regulated enzymes fructose-1,6-bisphosphatase, sedoheptulose-1,7-bisphosphatase and ribulose-1,5-bisphosphate carboxylase is also one of the reason for decreased photosynthesis during cold stress (Krause et al., 1988). While the effects of hyper-osmoticum and sub-optimal temperatures on photosynthesis are significant, the effects on total respiration are negligible (Figure 1)

Flexibility of Mitochondrial Electron Transport During Osmotic and Temperature Stress Conditions

The flexibility of the mitochondrial electron transport chain to divert electrons from phosphorylating to non-phosphorylating pathways decrease the over reduction of the electron transport chain components and ROS generation. This flexibility in mitochondrial electron transport chain is also observed in the present study during hyper-osmotic stress and sub-optimal temperature stress as evident by a significant increase in the capacity of AOX pathway with a concomitant decrease in the capacity of COX pathway (Figures 2A,B). These results corroborated well with the reports of Ribas-Carbo et al. (2005) in soyabean and Dwivedi et al. (2003) in pea, who showed an increase in AOX pathway activity and decrease in COX pathway activity under water and hyper-osmotic stress, respectively. Their results suggested that the increase in AOX pathway activity was due to direct inhibition of the COX pathway activity. Contrary to these results, the COX pathway activity was shown to be increased during water stress in wheat plants, while the leaf discs of *Saxifraga cernua* showed differential responses in COX and AOX pathway activities on exposure to a range of osmotic potentials from 0.0 to 4.0 MPa using sorbitol (Collier and Cummins, 1993; Zagdanska, 1995). The observed variations in the COX and AOX pathway capacity/activities in different studies might be possibly due to variations in the experimental conditions/techniques used to assess them.

Further, the observed decrease in the total cellular ATP/ADP ratios under different stress treatments as compared to controls

(Figure 2C) corroborated well with the studies of Flexas et al. (2004) and Ribas-Carbo et al. (2005). The studies of Tezara et al. (1999) suggested that the decline in leaf ATP concentration during water stress is an indicator of impaired photophosphorylation, which is one of the main factors limiting photosynthesis under water stress. Pyruvate, being a preferential substrate for mitochondrial oxidation is also known to play a significant role in communicating between chloroplasts and mitochondria to activate AOX protein/AOX pathway. The significant increase in the intracellular pyruvate levels under the hyper-osmotic and sub-optimal temperature stresses emphasizes its importance in stimulating the AOX pathway capacity (Figures 2A,B,D). In 10°C grown chick pea plants, application of pyruvate on leaves effectively reduced the oxidative stress by activating the AOX pathway (Erdal et al., 2015). Further, any decrease in the COX pathway activity might generate ROS due to over-reduction of the electron transport chain and AOX pathway is very well known to prevent ROS generation (Wagner and Moore, 1997). Thus, the increased ROS during stress conditions might represent the balance of the COX and AOX pathway capacities in light (Figure 3). The up regulation of AOX pathway capacity during osmotic and temperature stress conditions signifies the importance of AOX pathway during stress conditions and also highlights its role in decreasing the deleterious effects on not only mitochondrial respiration but also on carbon metabolism (Figures 1B,D and 2A,B). Mitochondria also possess several dissipative systems: rotenone (in)sensitive external and internal NAD(P)H dehydrogenases and complex I, COX pathway, uncoupling proteins (UCP) and potassium channel which may cooperate with AOX to prevent oxidative stress and thereby optimize photosynthetic carbon assimilation. Perhaps, these dissipative systems cannot be ignored in light of the heterogeneity of AOX effects on different components examined in the present study, which were found to be essential for efficient functioning of chloroplastic photosynthesis (Krömer et al., 1988; Igamberdiev et al., 1998; Møller, 2001; Dutilleul et al., 2003; Sweetlove et al., 2006; Yoshida et al., 2006, 2007; Noguchi and Yoshida, 2008). The studies of Trono et al. (2013) demonstrated that the hyperosmotic stress activate a mitochondrial PLA2 which in turn activate UCP and potassium channel to control ROS generation (Laus et al., 2011).

AOX Pathway Plays an Important Role in Optimizing Photosynthesis Under Hyper-Osmotic and Sub-Optimal Temperature Stress in Light

Studies using metabolic inhibitors or transgenic/reverse genetic approaches indicated that any interference in mitochondrial oxidative electron transport components and TCA cycle causes a significant drop in photosynthetic carbon assimilation along with reduction in the rate of transpiration, stomatal and mesophyll conductance to CO₂ (Krömer et al., 1993; Padmasree and Raghavendra, 1999a; Dutilleul et al., 2003; Priault et al., 2006; Yoshida et al., 2006, 2011; Dinakar et al., 2010a; Nunes-Nesi et al., 2010; Florez-Sarasa et al., 2011). The low concentration of SHAM (0.5 mM) used in the present study, neither directly affected the

reduction in bicarbonate dependent oxygen evolution rates in chloroplasts (Padmasree and Raghavendra, 1999a; Dinakar et al., 2010a) nor affected the photochemical activities of mesophyll protoplasts (Padmasree and Raghavendra, 2001a). SHAM also inhibits all the isoforms of AOX as evident from studies with knockouts of AOX1a *Arabidopsis* plants (Strodtkötter et al., 2009). The results from present study demonstrated that while the effect of 0.5 mM SHAM on respiratory rates and PS II activities were marginal, the decrease in photosynthetic carbon assimilation was significant (**Figure 3**). Since the D1 protein levels were also unchanged in the presence of SHAM under stress conditions, it can be concluded that the marginal interference in AOX pathway under hyper-osmotic stress and sub-optimal temperature stress caused a remarkable decrease in photosynthetic carbon assimilation with marginal effect on photochemical activities, as evident by changes in D1 protein levels (**Figures 3B–D**). Similar observations were also reported by Saradadevi and Raghavendra (1994), where the photosynthetic rates of mesophyll protoplasts decreased to a significant extent on exposure to solutions of increasing osmolarity. The production of ROS by mitochondria was suggested as the critical factor for the induction of AOX (Clifton et al., 2006; Rhoads et al., 2006) and the respiratory capacities of COX and AOX pathways are known to play a significant role in maintenance of cellular ROS at optimal levels to sustain high photosynthetic rates (Dinakar et al., 2010a). In our studies, although we observed a significant increase in ROS, we did not observe the decrease in D1 protein levels under osmotic as well as temperature stress conditions or even in the presence of SHAM (**Figures 3D** and **4**). These results suggest that the changes observed in ROS during hyper-osmotic stress and sub-optimal temperature stress might be involved in signaling function to activate the cellular defense mechanism, perhaps AOX and ROS scavenging antioxidant system (**Figures 2A,B, 4, 5B** and **8**).

Role of Malate Valve and ROS Scavenging Antioxidant System in Stimulating the *In Vivo* Activity of AOX Pathway to Optimize Photosynthesis Under Osmotic and Temperature Stress in Light

Decrease in photosynthesis is a primary effect that is observed during stress conditions. Under these conditions chloroplastic electron transport components accumulate reducing equivalents thereby preventing electron transport. Chloroplasts generated reducing equivalents may be transferred to mitochondria through several metabolite shuttles that operate between the two compartments. Malate and OAA are the two most important metabolites that are involved in redox shuttling between the chloroplasts, mitochondria, and cytosol. Malate/OAA shuttle is believed to be mediated by malate dehydrogenase and in equilibrium with the cellular NADH/NAD⁺ ratio. The assessment of the total cellular NADH and NAD⁺ levels also depends on the other metabolite shuttles and the activity of the mitochondrial oxidative electron transport. Therefore the possibility of change in intracellular malate/OAA ratio

without dramatic changes in NADH/NAD⁺ can occur in a cell. The major change in malate/OAA ratio is expected in chloroplasts, while NADH/NAD⁺ ratio is mostly in cytosol. This may be partly due to the consumption of reduced equivalents from malate by other metabolic components such as GSH and/or ascorbate. The pronounced increase in malate levels under hyper-osmotic stress conditions in the presence of SHAM indicates the biochemical role of malate in chloroplast-mitochondrial interactions (Supplementary Figure S3; **Figure 5A**). Biochemically the malate is oxidized to pyruvate via malic enzyme. In isolated mitochondria, malic enzyme activity is correlated with intramitochondrial pyruvate generation and consequent AOX activation (Day et al., 1995). In another study Yoshida et al. (2007) observed an active malic enzyme in AOX1a knockout plants. The COX and AOX pathways were known to play a significant role in oxidizing the malate and regenerating OAA to keep up the chloroplastic electron transport carriers in the oxidized state, which in turn helps to keep the Calvin cycle active for maintaining optimal photosynthesis (Padmasree and Raghavendra, 1999c; Raghavendra and Padmasree, 2003). The pronounced increase in malate/OAA ratio suggests the importance of ‘malate valve’ in mediating the cross talk between chloroplasts and mitochondria to activate AOX pathway under hyper-osmotic stress (**Figure 5A**). Chloroplastic NADP-dependent malate dehydrogenase (NADP-MDH) is the key enzyme controlling the malate valve, which export reducing equivalents indirectly from chloroplasts. The significant increase in maximal NADP-MDH activity in presence of SHAM corroborate well with the increased NADPH and malate levels, and redox ratios of NADPH/NADP⁺ and malate/OAA, respectively, under both hyper-osmotic and temperature stresses (**Figures 5A, 6B, and 7B**; Supplementary Figure S2A). However, the marginal increase in malate/OAA ratio in the presence of SHAM during sub-optimal temperature stress denotes that a redox modulating factor other than malate might play a role in modulating the ROS to keep up the Calvin cycle activity in chloroplasts.

While the amounts and activities of enzymes involved in ROS scavenging are known to be altered by environmental stresses such as chilling, drought and high salinity (Shao et al., 2008), the reductive detoxification of ROS occurs through the cellular ascorbate and glutathione pools (Smirnoff, 2000; Noctor, 2006). The decrease in photosynthetic carbon assimilation and GSH/GSSG ratio, parallel to a rise in ROS in presence of SHAM under osmotic and temperature stress suggests the role of AOX in optimizing photosynthesis by regulating ROS through glutathione redox couple (**Figures 3–5**). AOX pathway is known to play a significant role in optimizing photosynthesis by keeping up the light activation of chloroplastic enzymes (Padmasree and Raghavendra, 2001b). As these enzymes are regulated by thioredoxin-glutaredoxins, a remarkable decrease in glutathione redox couple at 10°C in presence of SHAM and increase in AOX pathway capacity provide evidence for the physiological role of AOX pathway in keeping up the light activation of chloroplastic enzymes to sustain photosynthesis under sub-optimal temperature stress

(Figures 2B, 3B, and 5B). Further, the marginal changes in NADH/NAD⁺ redox couples, in presence of SHAM when superimposed with hyper-osmotic stress and sub-optimal temperature further confirm the tight coupling of AOX pathway with malate/OAA and GSH/GSSG redox couples in regulating cellular ROS to protect photosynthesis from photoinhibition and sustain photosynthetic performance of mesophyll protoplasts under these stresses (Figures 2A,B, 3B, 5 and 6). The increase in the redox ratio of NADPH/NADP⁺ under sub-optimal temperature stress conditions in the presence of SHAM signifies the importance of AOX in oxidizing excess reducing equivalents (Figure 6B). Furthermore, though the changes in SOD and catalase activities were significant in the presence of SHAM during sub-optimal temperature stress, they could not play much role in protecting photosynthesis under hyper-osmotic stress by preventing generation/accumulation of cellular ROS (Figures 8A,B). On the other hand, the changes in GR were small but not significant under all conditions examined (Figure 8C). The significant increase in NADPH/NADP⁺ ratio with concomitant rise in ROS and a decrease in GSH/GSSG ratio while sustaining GR activity in presence of SHAM at 10°C indicated that AOX pathway optimize photosynthesis by regulating antioxidative system at sub-optimal temperature (Figures 2B, 4, 5B, 6B and 8C). These results suggest that non-enzymatic antioxidants play a significant role over enzymatic-oxidants in regulating cellular ROS during optimization of photosynthesis by AOX.

CONCLUSION

The present study demonstrates the importance of AOX pathway in optimizing photosynthesis during hyper-osmotic and temperature stress in light. The increased capacity of AOX pathway during both hyper-osmotic and sub-optimal temperature stress was evident by a parallel modulation in various biochemical factors such as pyruvate, ROS and ATP/ADP levels. Studies using mitochondrial AOX pathway inhibitor SHAM demonstrated that under both osmotic and temperature stress, the AOX pathway optimizes photosynthetic carbon

REFERENCES

- Araújo, W. L., Nunes-Nesi, A., and Fernie, A. R. (2014). On the role of plant mitochondrial metabolism and its impact on photosynthesis in both optimal and sub-optimal growth conditions. *Photosynth. Res.* 119, 141–156. doi: 10.1007/s11120-013-9807-4
- Armstrong, A. F., Badger, M. R., Day, D. A., Barthelet, M. M., Smith, P., Millar, A. H., et al. (2008). Dynamic changes in the mitochondrial electron transport chain underpinning cold acclimation of leaf respiration. *Plant Cell Environ.* 31, 1156–1169. doi: 10.1111/j.1365-3040.2008.01830.x
- Arnholdt-Schmitt, B. (2009). Alternative oxidase (AOX) and stress tolerance—approaching a scientific hypothesis. *Physiol. Plant.* 137, 314–315. doi: 10.1111/j.1399-3054.2009.01311.x
- Atkin, O. K., Millar, A. H., Gardeström, P., and Day, D. A. (2000). “Photosynthesis, carbohydrate metabolism and respiration in leaves of higher plants,” in *Photosynthesis: Physiology and Metabolism*, eds R. C. Leegood, T. D. Sharkey, and S. von Caemmerer (Dordrecht: Kluwer Academic Publishers), 153–175.

assimilation. The results highlight the flexibility of AOX pathway in interacting with different redox couples related to malate valve (malate/OAA) and antioxidative system (GSH/GSSG) to regulate cellular ROS for optimal photosynthetic performance under hyper-osmotic stress and sub-optimal temperature stress. Since the AOX mutants of pea are not available, studies using *Arabidopsis* are required to further understand the underlying molecular mechanisms.

AUTHOR CONTRIBUTIONS

Conceived and designed the experiments: CD, KP, and AR. Performed the experiments: CD and AV. Analyzed the data: CD, KP, and AR. Contributed reagents/materials/analysis tools: KP and AR. Wrote the paper: CD and KP

ACKNOWLEDGMENTS

This work was supported by grants to KP from Department of Science and Technology (No. SR/FTP/LS-226/2000), and Department of Biotechnology (No. BT/PR10272/GBD/27/85/2007) and ASR from DST JC Bose Fellowship (No. SR/S2/JCB-06/2006). The support of funds to the Department of Plant Sciences from DST-FIST level II (SR/FST/LSII-010/2007), Department of Biotechnology and Bioinformatics from DST-FIST level I and UGC-DRS (2015) and School of Life Sciences from UGC-CAS-I (F-5-8/2008,SAP-II) are gratefully acknowledged. CD acknowledges the grant from SERB (NO/SB/EMEQ-299/2014). AV is a recipient of Senior Research Fellowship from Council of Scientific and Industrial Research. We thank Dr. T. Saradadevi for helpful discussion and suggestions related to the manuscript.

SUPPLEMENTARY MATERIAL

The Supplementary Material for this article can be found online at: <http://journal.frontiersin.org/article/10.3389/fpls.2016.00068>

- Baier, M., and Dietz, K. J. (2005). Chloroplasts as source and target of cellular redox regulation: a discussion on chloroplast redox signals in the context of plant physiology. *J. Exp. Bot.* 56, 1449–1462. doi: 10.1093/jxb/eri161
- Bailleul, B., Berne, N., Murik, O., Petroustos, D., Prihoda, J., Tanaka, A., et al. (2015). Energetic coupling between plastids and mitochondria drives CO₂ assimilation in diatoms. *Nature* 524, 366–369. doi: 10.1038/nature14599
- Bartoli, C. G., Gomez, F., Gergoff, G., Guiamét, J. J., and Puntarulo, S. (2005). Up-regulation of the mitochondrial alternative oxidase pathway enhances photosynthetic electron transport under drought conditions. *J. Exp. Bot.* 56, 1269–1276. doi: 10.1093/jxb/eri111
- Beauchamp, C., and Fridovich, I. (1971). Superoxide dismutase: improved assays and an assay applicable to acrylamide gels. *Anal. Biochem.* 44, 276–287. doi: 10.1016/0003-2697(71)90370-8
- Bergmeyer, H. U. (1983). *Methods of Enzymatic Analysis*, 3rd Edn. Weinheim: Verlag Chemie.
- Berkowitz, G. A., and Gibbs, M. (1983). Reduced osmotic potential inhibition of photosynthesis. *Plant Physiol.* 72, 1100–1109. doi: 10.1104/pp.72.4.1100

- Cano, F. J., López, R., and Warren, C. R. (2014). Implications of the mesophyll conductance to CO₂ for photosynthesis and water-use efficiency during long-term water stress and recovery in two contrasting *Eucalyptus* species. *Plant Cell Environ.* 37, 2470–2490. doi: 10.1111/pce.12325
- Clifton, R., Millar, A. H., and Whelan, J. (2006). Alternative oxidases in *Arabidopsis*: a comparative analysis of differential expression in the gene family provides new insights into function of non-phosphorylating by passes. *Biochim. Biophys. Acta* 1757, 730–741. doi: 10.1016/j.bbabi.2006.03.009
- Collier, D. E., and Cummins, W. R. (1993). Sensitivity of the cytochrome and alternative pathways to osmotic stress in leaf slices of *Saxifraga cernua* L. *J. Plant Physiol.* 141, 745–749. doi: 10.1016/S0176-1617(11)81585-3
- Considine, M. J., Sandalio, L. M., and Foyer, C. H. (2015). Unravelling how plants benefit from ROS and NO reactions, while resisting oxidative stress. *Ann. Bot.* 116, 469–473. doi: 10.1093/aob/mcv153
- Cvetkovska, M., and Vanlerberghe, G. C. (2013). Alternative oxidase impacts the plant response to biotic stress by influencing the mitochondrial generation of reactive oxygen species. *Plant Cell Environ.* 36, 721–732. doi: 10.1111/pce.12009
- Dahal, K., Wang, J., Martyn, G. D., Rahimy, F., and Vanlerberghe, G. C. (2014). Mitochondrial alternative oxidase maintains respiration and preserves photosynthetic capacity during moderate drought in *Nicotiana tabacum*. *Plant Physiol.* 166, 1560–1574. doi: 10.1104/pp.114.247866
- Day, D. A., Whelan, J., Millar, H., Siedow, J. N., and Wiskich, J. T. (1995). Regulation of the alternative oxidase in plants and fungi. *Aust. J. Plant Physiol.* 22, 497–509. doi: 10.1071/PP950497
- Day, D. A., and Wiskich, J. T. (1995). Regulation of alternative oxidase activity in higher plants. *J. Bioener. Biomem.* 27, 379–385. doi: 10.1007/BF02110000
- Deng, X. G., Zhu, T., Zhang, D. W., and Lin, H. H. (2015). The alternative respiratory pathway is involved in brassinosteroid-induced environmental stress tolerance in *Nicotiana benthamiana*. *J. Exp. Bot.* 66, 6219–6232. doi: 10.1093/jxb/erv328
- Dinakar, C., Abhaypratap, V., Yearla, S. R., Raghavendra, A. S., and Padmasree, K. (2010a). Importance of ROS and antioxidant system during the beneficial interactions of mitochondrial metabolism with photosynthetic carbon assimilation. *Planta* 231, 461–474. doi: 10.1007/s00425-009-1067-3
- Dinakar, C., Raghavendra, A. S., and Padmasree, K. (2010b). Importance of AOX pathway in optimizing photosynthesis under high light stress: role of pyruvate and malate in activating AOX. *Physiol. Plant.* 139, 13–26. doi: 10.1111/j.1399-3054.2010.01346.x
- Duttilleul, C., Driscoll, S., Cornic, G., De Paepe, R., Foyer, C. H., and Noctor, G. (2003). Functional mitochondrial complex I is required by tobacco leaves for optimal photosynthetic performance in photorespiratory conditions and during transients. *Plant Physiol.* 131, 264–275. doi: 10.1104/pp.011155
- Dwivedi, P., Padmavathi, L., Gupta, K. J., and Raghavendra, A. S. (2003). Increased capacity of alternative pathway of mitochondrial electron transport in mesophyll protoplasts of pea on exposure to osmotic stress. *Ind. J. Plant Physiol.* 8, 403–406.
- Erdal, S., Genisel, M., Turk, H., Dumlupinar, R., and Demir, Y. (2015). Modulation of alternative oxidase to enhance tolerance against cold stress of chickpea by chemical treatments. *J. Plant Physiol.* 175, 95–101. doi: 10.1016/j.jplph.2014.10.014
- Esmailpour, A., Van Labeke, M. C., Samson, R., and Van Damme, P. (2015). Osmotic stress affects physiological responses and growth characteristics of three pistachio cultivars. *Acta Physiol. Plant.* 37, 1–14. doi: 10.1007/s11738-015-1876-x
- Feng, H., Li, H., Li, X., Duan, J., Liang, H., Zhi, D., et al. (2007). The flexible interrelation between AOX respiratory pathway and photosynthesis in rice leaves. *Plant Physiol. Biochem.* 45, 228–235. doi: 10.1016/j.plaphy.2007.01.008
- Fernie, A. R., Carrari, F., and Sweetlove, L. J. (2004). Respiratory metabolism: glycolysis, the TCA cycle and mitochondrial electron transport. *Curr. Opin. Plant Biol.* 7, 254–261. doi: 10.1016/j.pbi.2004.03.007
- Fiorani, F., Umbach, A. L., and Siedow, J. N. (2005). The alternative oxidase of plant mitochondria is involved in the acclimation of shoot growth at low temperature. A study of *Arabidopsis* AOX1a transgenic plants. *Plant Physiol.* 139, 1795–1805. doi: 10.1104/pp.105.070789
- Flexas, J., Bota, J., Loreto, F., Cornic, G., and Sharkey, T. D. (2004). Diffusive and metabolic limitations to photosynthesis under drought and salinity in C3 plants. *Plant Biol.* 6, 269–279. doi: 10.1055/s-2004-820867
- Florez-Sarasa, I., Flexas, J., Rasmussen, A. G., Umbach, A. L., Siedow, J. N., and Ribas-Carbo, M. (2011). In vivo cytochrome and alternative pathway respiration in leaves of *Arabidopsis thaliana* plants with altered alternative oxidase under different light conditions. *Plant Cell Environ.* 34, 1373–1383. doi: 10.1111/j.1365-3040.2011.02337.x
- Foyer, C. H., and Noctor, G. (2003). Redox sensing and signaling associated with reactive oxygen in chloroplasts, peroxisomes and mitochondria. *Physiol. Plant.* 119, 355–364. doi: 10.1034/j.1399-3054.2003.00223.x
- Foyer, C. H., and Noctor, G. (2005). Oxidant and antioxidant signaling in plants: a re-evaluation of the concept of oxidative stress in a physiological context. *Plant Cell Environ.* 28, 1056–1071. doi: 10.1111/j.1365-3040.2005.01327.x
- Fu, L. J., Shi, K., Gu, M., Zhou, Y. H., Dong, D. K., Liang, W. S., et al. (2010). Systemic induction and role of mitochondrial alternative oxidase and nitric oxide in a compatible tomato–tobacco mosaic virus interaction. *Mol. Plant Microbe Interact.* 23, 39–48. doi: 10.1094/MPMI-23-1-0039
- Fung, R. W. M., Wang, C. Y., Smith, D. L., Gross, K. C., Tao, Y., and Tian, M. (2006). Characterization of alternative oxidase (AOX) gene expression in response to methyl salicylate and methyl jasmonate pre-treatment and low temperature in tomatoes. *J. Plant Physiol.* 163, 1049–1060. doi: 10.1016/j.jplph.2005.11.003
- Galle, A., Florez-Sarasa, I., Thameur, A., de Paepe, R., Flexas, J., and Ribas-Carbo, M. (2010). Effects of drought stress and subsequent rewetting on photosynthetic and respiratory pathways in *Nicotiana sylvestris* wild type and the mitochondrial complex I-deficient CMSII mutant. *J. Exp. Bot.* 61, 765–775. doi: 10.1093/jxb/erp344
- Gandin, A., Koteyeva, N. K., Voznesenskaya, E. V., Edwards, G. E., and Cousins, A. B. (2014). The acclimation of photosynthesis and respiration to temperature in the C3–C4 intermediate *Salsola divaricata*: induction of high respiratory CO₂ release under low temperature. *Plant Cell Environ.* 37, 2601–2612. doi: 10.1111/pce.12345
- Gandin, A., Lapointe, L., and Dizengremel, P. (2009). The alternative respiratory pathway allows sink to cope with changes in carbon availability in the sink-limited plant *Erythronium americanum*. *J. Exp. Bot.* 60, 4235–4248. doi: 10.1093/jxb/erp255
- Garmash, E. V., Grabelnych, O. I., Velegzhaninov, I. O., Borovik, O. A., Dalke, I. V., Voinikov, V. K., et al. (2015). Light regulation of mitochondrial alternative oxidase pathway during greening of etiolated wheat seedlings. *J. Plant Physiol.* 174, 75–84. doi: 10.1016/j.jplph.2014.09.016
- Gechev, T. S., Van Breusegem, F., Stone, J. M., Denev, I., and Laloi, C. (2006). Reactive oxygen species as signals that modulate plant stress responses and programmed cell death. *BioEssays* 28, 1091–1101. doi: 10.1002/bies.20493
- Giraud, E., Ho, L. H. M., Clifton, R., Carroll, A., Estavillo, G., Tan, Y. F., et al. (2008). The absence of alternative oxidase 1a in *Arabidopsis thaliana* results in acute sensitivity to combined light and drought stress. *Plant Physiol.* 147, 595–610. doi: 10.1104/pp.107.115121
- Gonzalez-Meler, M. A., Matamala, R., and Penuelas, J. (1997). Effects of prolonged drought stress and nitrogen deficiency on the respiratory O₂ uptake of bean and pepper leaves. *Photosynthetica* 34, 505–512. doi: 10.1023/A:1006801210502
- Gonzalez-Meler, M. A., Ribas-Carbo, M., Giles, L., and Siedow, J. (1999). The effect of growth and measurement temperature on the activity of the alternative pathway. *Plant Physiol.* 120, 765–772. doi: 10.1104/pp.120.3.765
- Grabelnych, O., Borovik, O., Tauson, E., Pobezhimova, T., Katyshev, A., Pavlovskaya, N., et al. (2014). Mitochondrial energy-dissipating systems (alternative oxidase, uncoupling proteins, and external NADH dehydrogenase) are involved in development of frost-resistance of winter wheat seedlings. *Biochemistry (Moscow)* 79, 506–519. doi: 10.1134/S0006297914060030
- Griffin, K. L., and Turnbull, M. H. (2012). Out of the light and into the dark: post-illumination respiratory metabolism. *New Phytol.* 195, 4–7. doi: 10.1111/j.1469-8137.2012.04181.x
- Griffith, O. W. (1980). Determination of glutathione and glutathione disulfide using glutathione reductase and 2-vinyl-pyridine. *Anal. Biochem.* 106, 207–212. doi: 10.1016/0003-2697(80)90139-6

- Heineke, D., Reins, B., Grosee, H., Hoferichter, P., Peter, U., Flugge, U. I., et al. (1991). Redox transfer across the inner chloroplast envelope membrane. *Plant Physiol.* 95, 1131–1137. doi: 10.1104/pp.95.4.1131
- Huang, S., Jacoby, R. P., Shingaki-Wells, R. N., Li, L., and Millar, A. H. (2013). Differential induction of mitochondrial machinery by light intensity correlates with changes in respiratory metabolism and photorespiration in rice leaves. *New Phytol.* 198, 103–115. doi: 10.1111/nph.12123
- Igamberdiev, A. U., Hurry, V., Krömer, S., and Gardeström, P. (1998). The role of mitochondrial electron transport during photosynthetic induction. A study with barley (*Hordeum vulgare*) protoplasts incubated with rotenone and oligomycin. *Physiol. Plant.* 104, 431–439. doi: 10.1034/j.1399-3054.1998.1040319.x
- Jiang, M., and Zhang, J. (2001). Effect of abscisic acid on active oxygen species, antioxidant defence system and oxidative damage in leaves of maize seedlings. *Plant Cell Physiol.* 42, 1265–1273. doi: 10.1093/pcp/pce162
- Kiener, C. M., and Bramlage, W. J. (1981). Temperature effects on the activity of the alternative respiratory pathway in chill-sensitive *Cucumis sativus*. *Plant Physiol.* 68, 1474–1478. doi: 10.1104/pp.68.6.1474
- Krause, G. H., Grafflage, S., Rumich-Bayer, S., and Somersalo, S. (1988). Effects of freezing on plant mesophyll cells. *Symp. Soc. Exp. Biol.* 42, 311–327.
- Krömer, S. (1995). Respiration during photosynthesis. *Annu. Rev. Plant Physiol. Plant Mol. Biol.* 46, 45–70. doi: 10.1146/annurev.pp.46.060195.000401
- Krömer, S., Malmberg, G., and Gardeström, P. (1993). Mitochondrial contribution to photosynthetic metabolism. A study with barley (*Hordeum vulgare*) leaf protoplasts at different light intensities and CO₂ concentrations. *Plant Physiol.* 102, 947–955.
- Krömer, S., Stitt, M., and Heldt, H. W. (1988). Mitochondrial oxidative phosphorylation participating in photosynthetic metabolism of a leaf cell. *FEBS Lett.* 226, 352–356. doi: 10.1016/0014-5793(88)81453-4
- Kühn, K., Yin, G., Duncan, O., Law, S. R., Kubiszewski-Jakubiak, S., Kaur, P., et al. (2015). Decreasing electron flux through the cytochrome and/or alternative respiratory pathways triggers common and distinct cellular responses dependent on growth conditions. *Plant Physiol.* 167, 228–250. doi: 10.1104/pp.114.249946
- Laemmli, U. K. (1970). Cleavage of structural proteins during the assembly of the head of bacteriophage T4. *Nature* 227, 680–685. doi: 10.1038/227680a0
- Lambers, H., Robinson, S. A., and Ribas-Carbo, M. (2005). “Regulation of respiration in vivo,” in *Plant Respiration: From Cell to Ecosystem, Advances in Photosynthesis and Respiration Series*, Vol. 18, eds H. Lambers and M. Ribas-Carbo (Dordrecht: Springer), 1–15.
- Laus, M. N., Soccio, M., Trono, D., Liberatore, M. T., and Pastore, D. (2011). Activation of the plant mitochondrial potassium channel by free fatty acids and acyl-coA esters: a possible defence mechanism in the response to hyperosmotic stress. *J. Exp. Bot.* 62, 141–154. doi: 10.1093/jxb/erq256
- Liu, Z., Li, Y., Wang, J., He, X., and Tian, C. (2015). Different respiration metabolism between mycorrhizal and non-mycorrhizal rice under low-temperature stress: a cry for help from the host. *J. Agric. Sci.* 153, 602–614. doi: 10.1017/S0021859614000434
- Lowry, O. H., Rosebrough, N. J., Farr, A. L., and Randall, R. J. (1951). Protein measurement with the folin phenol reagent. *J. Biol. Chem.* 193, 265–275.
- Matos, A. R., Hourton-Cabassa, C., Cicek, D., Reze, N., Arrabaca, J. D., Zachowski, A., et al. (2007). Alternative oxidase involvement in cold stress response of *Arabidopsis thaliana* fad2 and FAD3+ cell suspensions altered in membrane lipid composition. *Plant Cell Physiol.* 48, 856–865. doi: 10.1093/pcp/pcm061
- McNulty, A. K., and Cummins, W. R. (1987). The relationship between respiration and temperature in leaves of the arctic plant *Saxifraga cernua*. *Plant Cell Environ.* 10, 319–325. doi: 10.1111/j.1365-3040.1987.tb01612.x
- Millar, A. H., Whelan, J., Soole, K. L., and Day, D. A. (2011). Organization and regulation of mitochondrial respiration in plants. *Annu. Rev. Plant Biol.* 62, 79–104. doi: 10.1146/annurev-arplant-042110-103857
- Moller, I. M. (2001). Plant mitochondria and oxidative stress: electron transport, NADPH turnover, and metabolism of reactive oxygen species. *Annu. Rev. Plant Physiol. Plant Mol. Biol.* 52, 561–591. doi: 10.1146/annurev.arplant.52.1.561
- Navrot, N., Rouhier, N., Gelhaye, E., and Jacquot, J. E. (2007). Reactive oxygen species generation and antioxidant systems in plant mitochondria. *Physiol. Plant.* 129, 185–195. doi: 10.1111/j.1399-3054.2006.00777.x
- Noctor, G. (2006). Metabolic signaling in defence and stress: the central roles of soluble redox couples. *Plant Cell Environ.* 29, 409–425. doi: 10.1111/j.1365-3040.2005.01476.x
- Noctor, G., De Paepe, R., and Foyer, C. H. (2007). Mitochondrial redox biology and homeostasis in plants. *Trends Plant Sci.* 12, 125–134. doi: 10.1016/j.tplants.2007.01.005
- Noguchi, K., and Yoshida, K. (2008). Interaction between photosynthesis and respiration in illuminated leaves. *Mitochondrion* 8, 87–99. doi: 10.1016/j.mito.2007.09.003
- Nunes-Nesi, A., Fernie, A. R., and Stitt, M. (2010). Metabolic and signaling aspects underpinning the regulation of plant carbon nitrogen interactions. *Mol. Plant* 3, 973–996. doi: 10.1093/mp/ssq049
- Padmasree, K., Padmavathi, L., and Raghavendra, A. S. (2002). Essentiality of mitochondrial oxidative metabolism for photosynthesis: optimization of carbon assimilation and protection against photoinhibition. *Crit. Rev. Biochem. Mol. Biol.* 37, 71–119. doi: 10.1080/10409230290771465
- Padmasree, K., and Raghavendra, A. S. (1999a). Importance of oxidative electron transport over oxidative phosphorylation in optimizing photosynthesis in mesophyll protoplasts of pea (*Pisum sativum* L.). *Physiol. Plant.* 105, 546–553. doi: 10.1034/j.1399-3054.1999.105321.x
- Padmasree, K., and Raghavendra, A. S. (1999b). Prolongation of photosynthetic induction as a consequence of interference with mitochondrial oxidative metabolism in mesophyll protoplasts of pea (*Pisum sativum* L.). *Plant Sci.* 142, 29–36. doi: 10.1016/S0168-9452(98)00252-0
- Padmasree, K., and Raghavendra, A. S. (1999c). Response of photosynthetic carbon assimilation in mesophyll protoplasts to restriction on mitochondrial oxidative metabolism: metabolites related to the redox status and sucrose biosynthesis. *Photosynth. Res.* 62, 231–239. doi: 10.1023/A:1006382518725
- Padmasree, K., and Raghavendra, A. S. (2001a). Consequence of restricted mitochondrial oxidative metabolism on photosynthetic carbon assimilation in mesophyll protoplasts: decrease in light activation for four chloroplastic enzymes. *Physiol. Plant.* 112, 582–588. doi: 10.1034/j.1399-3054.2001.1120417.x
- Padmasree, K., and Raghavendra, A. S. (2001b). Restriction of mitochondrial oxidative metabolism leads to suppression of photosynthetic carbon assimilation but not of photochemical electron transport in pea mesophyll protoplasts. *Curr. Sci.* 81, 680–684.
- Parades, M., and Quiles, M. J. (2015). The effects of cold stress on photosynthesis in *Hibiscus* plants. *PLoS ONE* 10:e0137472. doi: 10.1371/journal.pone.0137472
- Parsons, H. L., Yip, J. Y. H., and Vanlerberghe, G. C. (1999). Increased respiratory restriction during phosphate-limited growth in transgenic tobacco cells lacking alternative oxidase. *Plant Physiol.* 121, 1309–1320. doi: 10.1104/pp.121.4.1309
- Patterson, B. D., Payne, L. A., Chen, Y. Z., and Graham, D. (1984). An inhibitor of catalase induced by cold chilling-sensitive plants. *Plant Physiol.* 76, 1014–1018. doi: 10.1104/pp.76.4.1014
- Peñuelas, J., Ribas-Carbo, M., and Giles, L. (1996). Effects of allelochemicals on plant respiration and oxygen isotope fractionation by the alternative oxidase. *J. Chem. Ecol.* 22, 801–805. doi: 10.1007/BF02033587
- Priault, P., Fresneau, C., Noctor, G., De Paepe, R., Cornic, G., and Streb, P. (2006). The mitochondrial CMSII mutation of *Nicotiana sylvestris* impairs adjustment of photosynthetic carbon assimilation to higher growth irradiance. *J. Exp. Bot.* 57, 2075–2085. doi: 10.1093/jxb/erj161
- Pu, X., Lu, X., Tan, T., Fu, F., Qin, G., and Lin, H. (2015). Roles of mitochondrial energy dissipation systems in plant development and acclimation to stress. *Ann. Bot.* 116, 583–600. doi: 10.1093/aob/mcv063
- Purvis, A. C., Shewfelt, R. L., and Gegogaine, J. W. (1995). Superoxide production by mitochondria isolated from green bell pepper fruit. *Physiol. Plant.* 94, 743–749. doi: 10.1111/j.1399-3054.1995.tb00993.x
- Queval, G., and Noctor, G. (2007). A plate reader method for the measurement of NAD, NADP, glutathione, and ascorbate in tissue extracts: application to redox profiling during *Arabidopsis* rosette development. *Anal. Biochem.* 363, 58–69. doi: 10.1016/j.ab.2007.01.005
- Raghavendra, A. S., and Padmasree, K. (2003). Beneficial interactions of mitochondrial metabolism with photosynthetic carbon assimilation. *Trends Plant Sci.* 8, 546–553. doi: 10.1016/j.tplants.2003.09.015
- Raghavendra, A. S., Padmasree, K., and Saradadevi, K. (1994). Interdependence of photosynthesis and respiration in plant cells: interactions between chloroplasts and mitochondria. *Plant Sci.* 97, 1–14. doi: 10.1016/0168-9452(94)90101-5

- Rhoads, D. M., Umbach, A. L., Subbaiah, C. C., and Siedow, J. N. (2006). Mitochondrial reactive oxygen species. Contribution of oxidative stress and interorganelle signaling. *Plant Physiol.* 141, 357–366. doi: 10.1104/pp.106.079129
- Riazunnisa, K., Padmavathi, L., Scheibe, R., and Raghavendra, A. S. (2007). Preparation of *Arabidopsis* mesophyll protoplasts with high rates of photosynthesis. *Physiol. Plant.* 129, 679–686.
- Ribas-Carbo, M., Aroca, R., González-Meler, M. A., Irigoyen, J. J., and Sánchez-Díaz, M. (2000). The electron partitioning between the cytochrome and alternative respiratory pathways during chilling recovery in two cultivars of maize differing in chilling sensitivity. *Plant Physiol.* 122, 199–204. doi: 10.1104/pp.122.1.199
- Ribas-Carbo, M., Taylor, N. L., Giles, L., Busquets, S., Finnegan, P. M., Day, D. A., et al. (2005). Effects of water stress on respiration in soybean leaves. *Plant Physiol.* 139, 466–473. doi: 10.1104/pp.105.065565
- Rogov, A., and Zvyagilskaya, R. (2015). Physiological role of alternative oxidase (from yeasts to plants). *Biochemistry (Moscow)*. 80, 400–407. doi: 10.1134/S0006297915040021
- Saradadevi, K., and Raghavendra, A. S. (1992). Dark respiration protects photosynthesis against photoinhibition in mesophyll protoplasts of pea (*Pisum sativum*). *Plant Physiol.* 99, 1232–1237. doi: 10.1104/pp.99.3.1232
- Saradadevi, K., and Raghavendra, A. S. (1994). Inhibition of photosynthesis by osmotic stress in pea (*Pisum sativum*) mesophyll protoplasts is intensified by chilling or photoinhibitory light; intriguing responses of respiration. *Plant Cell Environ.* 17, 739–746. doi: 10.1111/j.1365-3040.1994.tb00166.x
- Scheibe, R., Backhausen, J. E., Emmerlich, V., and Holtgreffe, S. (2005). Strategies to maintain redox homeostasis during photosynthesis under changing conditions. *J. Exp. Bot.* 56, 1481–1489. doi: 10.1093/jxb/eri181
- Scheibe, R., and Dietz, K. J. (2012). Reduction–oxidation network for flexible adjustment of cellular metabolism in photoautotrophic cells. *Plant Cell Environ.* 35, 202–216. doi: 10.1111/j.1365-3040.2011.02319.x
- Schertl, P., and Braun, H. P. (2014). Respiratory electron transport pathways in plant mitochondria. *Front. Plant Sci.* 5:163. doi: 10.3389/fpls.2014.00163
- Searle, S. Y., Thomas, S., Griffin, K. L., Horton, T., Kornfeld, A., Yakir, D., et al. (2011). Leaf respiration and alternative oxidase in field-grown alpine grasses respond to natural changes in temperature and light. *New Phytol.* 189, 1027–1039. doi: 10.1111/j.1469-8137.2010.03557.x
- Sevilla, F., Camejo, D., Ortiz-Espín, A., Calderón, A., Lázaro, J. J., and Jiménez, A. (2015). The thioredoxin/peroxiredoxin/sulfiredoxin system: current overview on its redox function in plants and regulation by reactive oxygen and nitrogen species. *J. Exp. Bot.* 66, 2945–2955. doi: 10.1093/jxb/erv146
- Shao, H. B., Chu, L. Y., Shao, M. A., Cheruth, A. J., and Mi, H. M. (2008). Higher plant antioxidants and redox signaling under environmental stresses. *C. R. Biol.* 331, 433–441. doi: 10.1016/j.crv.2008.03.011
- Shaw, R., and Kundu, S. (2015). Metabolic plasticity and inter-compartmental interactions in rice metabolism: an analysis from reaction deletion study. *PLoS ONE* 10:e0133899. doi: 10.1371/journal.pone.0133899
- Siedow, J. N., and Umbach, A. L. (2000). The mitochondrial cyanide-resistant oxidase: structural conservation amid regulatory diversity. *Biochim. Biophys. Acta* 1459, 432–439. doi: 10.1016/S0005-2728(00)00181-X
- Sieger, S. M., Kristensen, B. K., Robson, C. A., Amirsadeghi, S., Eng, E. W., Abdel-Mesih, A., et al. (2005). The role of alternative oxidase in modulating carbon use efficiency and growth during macronutrient stress in tobacco cells. *J. Exp. Bot.* 56, 1499–1515. doi: 10.1093/jxb/eri146
- Smirnov, N. (2000). Ascorbic acid: metabolism and functions of a multifaceted molecule. *Curr. Opin. Plant Biol.* 3, 229–235. doi: 10.1016/S1369-5266(00)00069-8
- Stewart, C. R., Martin, B. A., Reding, L., and Cerwick, S. (1990a). Seedling growth, mitochondrial characteristics, and alternative respiratory capacity of corn genotypes differing in cold tolerance. *Plant Physiol.* 92, 761–766. doi: 10.1104/pp.92.3.761
- Stewart, C. R., Martin, B. A., Reding, L., and Cerwick, S. (1990b). Respiration and alternative oxidase in corn seedling tissues during germination at different temperatures. *Plant Physiol.* 92, 755–760. doi: 10.1104/pp.92.3.755
- Strodtkötter, I., Padmasree, K., Dinakar, C., Speth, B., Niazi, P. S., Wojtera, J., et al. (2009). Induction of the AOX1D isoform of alternative oxidase in *A. thaliana* T-DNA insertion lines lacking isoform AOX 1A is insufficient to optimize photosynthesis when treated with AA. *Mol. Plant* 2, 284–297. doi: 10.1093/mp/ssn089
- Sunil, B., Talla, S. K., Aswani, V., and Raghavendra, A. S. (2013). Optimization of photosynthesis by multiple metabolic pathways involving interorganelle interactions: resource sharing and ROS maintenance as the bases. *Photosynth. Res.* 117, 61–71. doi: 10.1007/s11120-013-9889-z
- Sweetlove, L. J., Lytovchenko, A., Morgan, M., Nunes-Nesi, A., Taylor, N. L., Baxter, C. J., et al. (2006). Mitochondrial uncoupling protein is required for efficient photosynthesis. *Proc. Natl. Acad. Sci. U.S.A.* 103, 19587–19592. doi: 10.1073/pnas.0607751103
- Tezara, W., Mitchell, V. J., Driscoll, S. D., and Lawlor, D. W. (1999). Water stress inhibits plant photosynthesis by decreasing coupling factor and ATP. *Nature* 401, 914–917. doi: 10.1038/44842
- Towbin, H., Staehlin, T., and Gordon, J. (1979). Electrophoretic transfer of proteins from polyacrylamide gels to nitrocellulose sheets. Procedure and some applications. *Proc. Natl. Acad. Sci. U.S.A.* 76, 4350–4354. doi: 10.1073/pnas.76.9.4350
- Tripathy, B. C., and Oelmüller, R. (2012). Reactive oxygen species generation and signaling in plants. *Plant Signal. Behav.* 7, 1621–1633. doi: 10.4161/psb.22455
- Trono, D., Soccio, M., Laus, M. N., and Pastore, D. (2013). The existence of phospholipase A (2) activity in plant mitochondria and its activation by hyperosmotic stress in durum wheat (*Triticum durum* Desf.). *Plant Sci.* 19, 91–102. doi: 10.1016/j.plantsci.2012.11.002
- Umbach, A. L., Fiorani, F., and Siedow, J. N. (2005). Characterization of transformed *Arabidopsis* with altered alternative oxidase levels and analysis of effects on reactive oxygen species in tissue. *Plant Physiol.* 139, 1806–1820. doi: 10.1104/pp.105.070763
- Vandoorne, B., Mathieu, A. S., Van den Ende, W., Vergauwen, R., Périlleux, C., Javaux, M., et al. (2012). Water stress drastically reduces root growth and inulin yield in *Cichorium intybus* (var. *sativum*) independently of photosynthesis. *J. Exp. Bot.* 63, 4359–4373. doi: 10.1093/jxb/ers095
- Vanlerberghe, G. C. (2013). Alternative oxidase: a mitochondrial respiratory pathway to maintain metabolic and signaling homeostasis during abiotic and biotic stress in plants. *Int. J. Mol. Sci.* 14, 6805–6847. doi: 10.3390/ijms14046805
- Vanlerberghe, G. C., Cvetkovska, M., and Wang, J. (2009). Is the maintenance of homeostatic mitochondrial signaling during stress a physiological role for alternative oxidase? *Physiol. Plant.* 4, 392–406. doi: 10.1111/j.1399-3054.2009.01254.x
- Vanlerberghe, G. C., and McIntosh, L. (1992a). Lower growth temperature inaeases alternative pathway capacity and alternative oxidase protein in tobacco. *Plant Physiol.* 100, 115–119. doi: 10.1104/pp.100.1.115
- Vanlerberghe, G. C., and McIntosh, L. (1992b). Coordinate regulation of cytochrome and alternative pathway respiration in tobacco. *Plant Physiol.* 100, 1846–1851. doi: 10.1104/pp.100.4.1846
- Vanlerberghe, G. C., Robson, C. A., and Yip, J. Y. H. (2002). Induction of mitochondrial alternative oxidase in response to a cell signal pathway down-regulating the cytochrome pathway prevents programmed cell death. *Plant Physiol.* 129, 1829–1842. doi: 10.1104/pp.002691
- Vassileva, V., Simova-Stoilova, L., Demirevska, K., and Feller, U. (2009). Variety-specific response of wheat (*Triticum aestivum* L.) leaf mitochondria to drought stress. *J. Plant. Res.* 122, 445–454. doi: 10.1007/s10265-009-0225-9
- Veech, R. L., Eggleston, L. V., and Krebs, H. A. (1969). The redox state of free nicotinamide adenine dinucleotide phosphate in the cytoplasm of rat liver. *Biochem. J.* 115, 609–619. doi: 10.1042/bj1150609a
- Vishwakarma, A., Bashyam, L., Senthilkumar, B., Scheibe, R., and Padmasree, K. (2014). Physiological role of AOX1a in photosynthesis and maintenance of cellular redox homeostasis under high light in *Arabidopsis thaliana*. *Plant Physiol. Biochem.* 81, 44–53. doi: 10.1016/j.plaphy.2014.01.019
- Vishwakarma, A., Tetali, S. D., Selinski, J., Scheibe, R., and Padmasree, K. (2015). Importance of the alternative oxidase (AOX) pathway in regulating cellular redox and ROS homeostasis to optimize photosynthesis during restriction of the cytochrome oxidase pathway in *Arabidopsis thaliana*. *Ann. Bot.* 116, 555–569. doi: 10.1093/aob/mcv122
- Wagner, A. M., and Moore, A. L. (1997). Structure and function of the plant alternative oxidase: its putative role in the oxygen defence mechanism. *Biosci. Rep.* 17, 319–333. doi: 10.1023/A:1027388729586

- Wang, J., Rajakulendran, N., Amirsadeghi, S., and Vanlerberghe, G. C. (2011). Impact of mitochondrial alternative oxidase expression on the response of *Nicotiana tabacum* to cold temperature. *Physiol. Plant.* 142, 339–351. doi: 10.1111/j.1399-3054.2011.01471.x
- Yoshida, K., Terashima, I., and Noguchi, K. (2006). Distinct roles of the cytochrome pathway and alternative oxidase in leaf photosynthesis. *Plant Cell Physiol.* 47, 22–31. doi: 10.1093/pcp/pci219
- Yoshida, K., Terashima, I., and Noguchi, K. (2007). Up-regulation of mitochondrial alternative oxidase concomitant with chloroplast over-reduction by excess light. *Plant Cell Physiol.* 48, 606–614. doi: 10.1093/pcp/pcm033
- Yoshida, K., Watanabe, C. K., Terashima, I., and Noguchi, K. (2011). Physiological impact of mitochondrial alternative oxidase on photosynthesis and growth in *Arabidopsis thaliana*. *Plant Cell Environ.* 34, 1890–1899. doi: 10.1111/j.1365-3040.2011.02384.x
- Zagdanska, B. (1995). Respiratory energy demand for protein turnover and ion transport in wheat leaves upon water demand. *Physiol. Plant* 95, 428–436. doi: 10.1111/j.1399-3054.1995.tb00859.x
- Zhao, C., Wang, X., Wang, X., Wu, K., Li, P., Chang, N., et al. (2015). Glucose-6-phosphate dehydrogenase and alternative oxidase are involved in the cross tolerance of highland barley to salt stress and UV-B radiation. *J. Plant Physiol.* 181, 83–95. doi: 10.1016/j.jplph.2015.03.016

Conflict of Interest Statement: The authors declare that the research was conducted in the absence of any commercial or financial relationships that could be construed as a potential conflict of interest.

Copyright © 2016 Dinakar, Vishwakarma, Raghavendra and Padmasree. This is an open-access article distributed under the terms of the Creative Commons Attribution License (CC BY). The use, distribution or reproduction in other forums is permitted, provided the original author(s) or licensor are credited and that the original publication in this journal is cited, in accordance with accepted academic practice. No use, distribution or reproduction is permitted which does not comply with these terms.