



# Conservation of the abscission signaling peptide IDA during Angiosperm evolution: withstanding genome duplications and gain and loss of the receptors HAE/HSL2

Ida M. Stø<sup>1†</sup>, Russell J. S. Orr<sup>1†</sup>, Kim Fooyontphanich<sup>2</sup>, Xu Jin<sup>3</sup>, Jonfinn M. B. Knutsen<sup>1</sup>, Urs Fischer<sup>3</sup>, Timothy J. Tranbarger<sup>2</sup>, Inger Nordal<sup>1</sup> and Reidunn B. Aalen<sup>1\*</sup>

## OPEN ACCESS

### Edited by:

Maria Carlota Vaz Patto,  
Universidade Nova de Lisboa,  
Portugal

### Reviewed by:

Chad Niederhuth,  
University of Georgia, USA  
Coralie Lashbrook,  
Des Moines Area Community College,  
USA  
John Walker,  
University of Missouri, USA

### \*Correspondence:

Reidunn B. Aalen  
reidunn.aalen@ibv.uio.no

† Joint first authors.

### Specialty section:

This article was submitted to  
Crop Science and Horticulture,  
a section of the journal  
Frontiers in Plant Science

Received: 14 July 2015

Accepted: 15 October 2015

Published: 30 October 2015

### Citation:

Stø IM, Orr RJS, Fooyontphanich K,  
Jin X, Knutsen JMB, Fischer U,  
Tranbarger TJ, Nordal I and Aalen RB  
(2015) Conservation of the abscission  
signaling peptide IDA during  
Angiosperm evolution: withstanding  
genome duplications and gain and  
loss of the receptors HAE/HSL2.  
Front. Plant Sci. 6:931.  
doi: 10.3389/fpls.2015.00931

<sup>1</sup> Section for Genetics and Evolutionary Biology, Department of Biosciences, University of Oslo, Oslo, Norway, <sup>2</sup> UMR Diversité et Adaptation et Développement des Plantes, Institut de Recherche pour le Développement, Montpellier, France, <sup>3</sup> Department of Forest Genetics and Plant Physiology, Umeå Plant Science Centre, Swedish University of Agricultural Sciences, Umeå, Sweden

The peptide INFLORESCENCE DEFICIENT IN ABSCISSION (IDA), which signals through the leucine-rich repeat receptor-like kinases HAESA (HAE) and HAESA-LIKE2 (HSL2), controls different cell separation events in *Arabidopsis thaliana*. We hypothesize the involvement of this signaling module in abscission processes in other plant species even though they may shed other organs than *A. thaliana*. As the first step toward testing this hypothesis from an evolutionary perspective we have identified genes encoding putative orthologs of IDA and its receptors by BLAST searches of publically available protein, nucleotide and genome databases for angiosperms. Genes encoding IDA or IDA-LIKE (IDL) peptides and HSL proteins were found in all investigated species, which were selected as to represent each angiosperm order with available genomic sequences. The 12 amino acids representing the bioactive peptide in *A. thaliana* have virtually been unchanged throughout the evolution of the angiosperms; however, the number of IDL and HSL genes varies between different orders and species. The phylogenetic analyses suggest that IDA, HSL2, and the related HSL1 gene, were present in the species that gave rise to the angiosperms. HAE has arisen from HSL1 after a genome duplication that took place after the monocot–eudicots split. HSL1 has also independently been duplicated in the monocots, while HSL2 has been lost in gingers (Zingiberales) and grasses (Poales). IDA has been duplicated in eudicots to give rise to functionally divergent IDL peptides. We postulate that the high number of IDL homologs present in the core eudicots is a result of multiple whole genome duplications (WGD). We substantiate the involvement of IDA and HAE/HSL2 homologs in abscission by providing gene expression data of different organ separation events from various species.

**Keywords:** LRR-RLK, phylogeny, genome duplication, peptide signaling, leaf abscission, fruit abscission, *Populus*, oil palm

## INTRODUCTION

Plant architecture is dependent on the balance between cell division and cell elongation, proliferation and differentiation, as well as formation and abscission of organs. Plants are sessile organisms that over evolutionary time have adapted to their environment. They have developed reproductive strategies involving mechanisms that in various ways facilitate fruit and seed dispersal. The shedding of organs that have served their purpose is furthermore part of normal development, but detachment can also be a response to injury or environmental changes. The model plant *A. thaliana* shed individual floral organs (petals, sepals, and stamen) shortly after pollination (Bleecker and Patterson, 1997), and displays opening of the valves of the mature siliques (so called dehiscence), and thereafter seed dropping. Other species may shed leaves (e.g., deciduous trees like aspen, *Populus tremula*) and whole flowers (e.g., Citrus), or fruits (e.g., tomato, palms).

Despite variation in the sites of abscission in different species of flowering plants, various abscission events are similar at the cellular level in that they take place in specialized abscission zones (AZs). AZs are either generated already during the development of the organ, or can be induced in response to hormonal or environmental cues (Patterson, 2001; Roberts et al., 2002; Lewis et al., 2006; Aalen, 2011). Organ detachment is a cell separation process that involves dissolution of the middle lamella between adjacent AZ cell files presumably through the action of a number of different cell wall remodeling and degrading proteins, e.g., polygalacturonases, expansins, XTHs, and endoglucanases (Cho and Cosgrove, 2000; González-Carranza et al., 2007; Lashbrook and Cai, 2008; Meir et al., 2010; Liu et al., 2013; Niederhuth et al., 2013; Tsuchiya et al., 2015). One can assume that there is a need for tight regulation and coordination of expression of genes involved in cell separation processes, since cell wall weakening and breakdown could render the plant more susceptible to pathogen attack, and premature organ loss would reduce reproductive success.

In *A. thaliana* a peptide ligand—receptor system responsible for such tight regulation of floral organ abscission has been identified (Butenko et al., 2003; Stenvik et al., 2008). This signaling module consists of the secreted peptide IDA encoded by the gene *INFLORESCENCE DEFICIENT IN ABSCISSION* (At1g68765), and the two leucine-rich repeat (LRR) receptor-like kinases (RLK) HAESA (HAE) and HAESA-LIKE2 (HSL2) (Cho et al., 2008; Stenvik et al., 2008). In both *ida* and *hae hsl2* mutants floral organs are retained indefinitely. IDA belongs to a small gene family in *A. thaliana* with five additional IDA-LIKE (*AtIDL*) members that to a varying degree can substitute for IDA function (Butenko et al., 2003; Stenvik et al., 2008). IDA and the IDL proteins share a short C-terminal sequence encompassing the bioactive peptide (Stenvik et al., 2008), which for IDA has been delineated to a 12 amino acids (aa) long proline-rich peptide (hereafter called mature IDA, mIDA) using genetic and biochemical tools (Stenvik et al., 2008; Butenko et al., 2014). Overexpression either of IDA or *AtIDL* genes, results in early abscission and enlarged abscission zones (AZ) at the base of the floral organs, but when expressed using IDA's own promoter,

only IDA and *AtIDL1* can fully complement the *ida* mutant phenotype. Together this may suggest that *AtIDL2-5* peptides have lower affinity to HAE and HSL2, and possibly signal through (a) different, but related receptor(s) (Stenvik et al., 2008). There are more than 600 genes in *A. thaliana* encoding receptor-like kinases, and of these more than 200 encode extracellular domains with LRRs of varying length assumed to bind small peptides (Shiu and Bleecker, 2001). Only about a dozen of these have been matched with a ligand (Butenko et al., 2009). The majority of these, including HAE and HSL2, belong to the RLK subclass XI, which has more than 20 LRRs.

Interestingly, ectopic expression of IDA in *A. thaliana* leads to abscission of fruit, flowers, branches, and cauline leaves at vestigial AZ at the base of these organs, which are sites of cell separation in a number of other species, but normally not in *A. thaliana* (Stenvik et al., 2006). Additionally, the IDA-HAE/HSL2 signaling module is involved in a quite different cell separation process, namely lateral root emergence (Kumpf et al., 2013). IDA and the receptors are expressed in the endodermal, cortical, and epidermal cells overlaying lateral root primordia, induce expression of cell wall remodeling genes and facilitate emergence without cellular disruption (Aalen et al., 2013; Kumpf et al., 2013).

The objective of the presented work has been to investigate to what extent orthologs of IDA, HAE, and HSL2 are present in other angiosperms irrespective of which organs they shed, and whether gene expression data could substantiate a role of these orthologs in cell separation events.

## MATERIALS AND METHODS

### Phylogenetic Analyses

Sequences used in this study were obtained from various databases [NCBI-protein, NCBI-Assembly, Phytozome, Ancestral Angiosperm Genome Project (AAGP), Comparative Genomics (CoGe)] using either tBLASTn or BLASTp (as of 3.2015) with an *A. thaliana* IDL or HSL query. Outgroup taxa for both monocot and eudicot receptors were closely related *A. thaliana* representations within the subclass XI LRR-RLKs. IDA was inferred without an outgroup. An aa alignment (~59 aa) of angiosperm IDA without the N-terminal secretion signal and LRR-RLK group (full length 1926 aa) was constructed using MAFFT v6 E-INS-I model under default settings (Kato and Toh, 2008). The resulting alignments were checked with Gblocks v0.91b (Castresana, 2000), under the least stringent parameters (small final block, gap positions in final block and less strict flanking), to exclude poorly aligned positions and divergent regions from subsequent phylogenetic inferences. Multiple homologous copies of HSL1/HSL2/HAESA (At1g28440/At5g65710/At4g28490) for each species were removed to reduce phylogenetic noise; in all cases the copy with most sequence data and thereafter shortest branch length was retained for further analysis. ProtTest v2.4 (Abascal et al., 2005) determined LG as the optimal evolutionary model. Maximum Likelihood (ML) analyses were performed with RAxML-VI-HPCv8.0.26, using the PROTCATLG model with 25

rate categories (Stamatakis, 2006). The most likely topology was established from 100 separate searches and bootstrap analyses were performed with 500 pseudoreplicates.

All model estimation and phylogenetic analyses were done using either Lifeportal (<https://lifeportal.uio.no>) or the abel server at the University of Oslo. All alignments constructed as part of this study are available as Supplementary Data sets, and will in addition be made freely available as Supplementary resources through the authors' Research Gate pages ([https://www.researchgate.net/profile/Reidunn\\_Aalen](https://www.researchgate.net/profile/Reidunn_Aalen)) and ([https://www.researchgate.net/profile/Russell\\_Orr2](https://www.researchgate.net/profile/Russell_Orr2)).

## Plant Material

*A. thaliana* has been transformed with *HAE* and *HSL2* promoter::GUS constructs in the vector pMDC162 made using Gateway Cloning Technology (Curtis and Grossniklaus, 2003) with the same promoter region upstream of the coding sequence (1601 bp and 2300 bp, respectively) as previously reported for *HAE* and *HSL2* constructs with YFP reporter (Kumpf et al., 2013).

Fully expanded leaf blades of hybrid aspen, *Populus tremula* L. X *P. tremuloides* Michx.; clone T89, were shaded in aluminum foil to induce abscission and total RNA was extracted from 3 mm-thick leaf axils 6 days after shading started using RNeasy Plant Mini Kit (Qiagen). Two micrograms of total RNA was used as a template for reverse transcription with the QuantiTect Reverse Transcription Kit (Qiagen). Quantitative real-time PCR (qPCR) was performed using SYBR Green I Master in combination with a LC4800 (Roche Diagnostics) qPCR machine. Primers are specified in Supplementary Table S1. Expression was normalized to *PtACTIN1* expression.

mRNA was isolated from AZs of unripe and ripe of oil palm (*Elaeis guineensis*) fruit, and AZs of fruit treated with ethylene as described previously (Roongsattham et al., 2012). Primers were designed to fit the various *EgIDA* genes, *EgHSL2*, and *EgHSL1* (Supplementary Table S1). qPCR was performed as previously described (Roongsattham et al., 2012). All expression was normalized to the *EgEfa1* (accession number: AY550990) expression. No change of *EgEfa1* transcript accumulation was found in the fruit tissues treated or not treated with ethylene. Controls were conducted to validate the absence of DNA in each sample.

## RESULTS

### HSL2 has been Lost in the Gingers and the Grasses, and HAE is Present only in Eudicots

The *A. thaliana* *HAE* and *HSL2* receptors are closely related (60% similar and 45% identical aa) but *HAE* is even more closely related to *HSL1* (73% similarity, 58% identical aa), an RLK so far with unknown function. BLASTp and tBLASTn were used to identify putative *HSL1* angiosperm orthologs in addition to orthologs of *HAE* and *HSL2*. Other related receptors from the LRR-RLK subclass XI were used as outliers. Protein sequences from 60 species belonging to 24 orders covering basal

angiosperms, monocots, basal eudicots, and core eudicot clades were used to determine the phylogenetic relationship.

The LRR-RLK ingroup is monophyletic, separated from the outgroup with high support (98% Bootstrap, BP) (Figure 1, Supplementary Figure S1). *HSL2* and *HSL1/HAE* represent two fully supported distinct clades (100% BP). In the *HSL2* clade, the basal angiosperm copy is first to diverge within a fully supported grouping, leaving a highly supported (92% BP) monocot/eudicot clade. Subsequently, a moderately supported (71% BP) monocot clade diverges, leaving a poorly supported (54% BP) eudicot monophyly. *HSL2* is however missing in the taxa from the orders Poales and Zingiberales (Supplementary Figure S1).

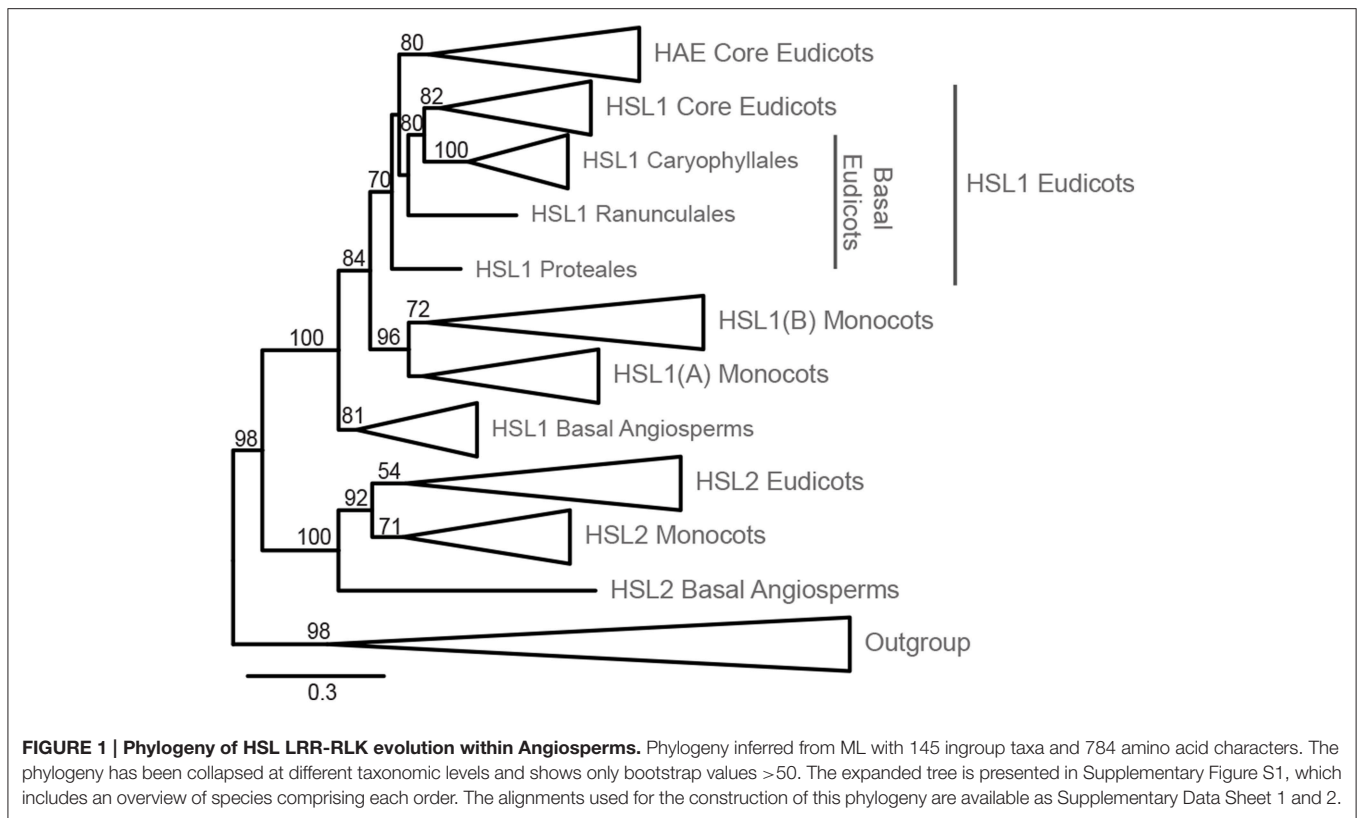
The *HSL1/HAE* clade is fully supported with the basal angiosperm copy being first to diverge leaving a moderately supported (84% BP) monocot/eudicot clade (Figure 1). The monocot *HSL1* copy diverges next forming a highly supported clade (96% BP). Two groupings are found within the monocot clade; the first—constituting all monocot orders (*HSL1A*)—is unsupported (40% BP), but excluded from the second, longer-branching *HSL1B*. This duplicate *HSL1* clade for the orders Arecales (palms), Poales, and Zingiberales, has moderate support (72% BP) (Figure 1, Supplementary Figure S1). The eudicot *HSL1/HAE* grouping is moderately supported (70% BP). The *HAE* clade, representing Vitales in addition to all Rosids and Asterids, is moderately supported (80% BP) and excludes the basal eudicot orders Ranunculales, Proteales, and Caryophyllales which have a closer affinity to the moderately supported (82% BP) eudicot *HSL1* grouping. The fully supported Caryophyllales clade forms a moderately supported (80% BP) monophyly with the eudicot *HSL1* grouping.

Our analyses revealed that all angiosperms have *HSL1* genes, in basal angiosperms and some monocots, and almost all eudicots in combination with a *HSL2* gene. Only the core eudicots have both a *HAE* and a *HSL2* gene. In *A. thaliana* *HAE* and *HSL2* are redundant in function with respect to floral organ abscission, as both genes must be mutated to give the abscission-deficient phenotype (Cho et al., 2008; Stenvik et al., 2008).

### HAE and HSL1 Differ from HSL2 Especially in their Kinase Domains

LRR-RLK proteins consist of three domains with different functions: the intracellular kinase domain that confers the signaling output upon ligand binding, the transmembrane domain that anchors the receptors in the plasma membrane, and the extracellular LRR to which the ligand will bind (called the ectodomain). As these three domains have different functions, the selective pressure for rejecting or preserving new mutations might differ.

The intracellular kinase domain has typically two regions: the N-terminal lobe with several  $\beta$  strands and a conserved ATP binding site, and the larger C-terminal part with a number of  $\alpha$ -helices, and an activation loop with serine/threonine [Ser(S)/Thr(T)] target residues for phosphorylation. In the BRASSINOSTEROID INSENSITIVE1 (*BRI1*) LRR-RLK several such residues are phosphorylated (Wang et al., 2005). These residues are well conserved in the *A. thaliana*



HAE, HSL1 and HSL2 receptors and their orthologs in other species (Supplementary Figure S2A). This includes the residue corresponding to S861 of HAE, which is subject to autophosphorylation (Taylor et al., 2013), and several residues predicted to be targets of Ser/Thr kinases (e.g., by using PhosPhAt <http://phosphat.uni-hohenheim.de/>) (Durek et al., 2010). However, in loops between helices positions of putative phosphorylation sites differ in HSL2 receptors compared to HAE/HSL1. Furthermore, HSL2 receptors lack a C-terminal extension with putative phosphorylation sites (Supplementary Figure S2A). The predicted secondary structures of the transmembrane domains of HAE, HSL1, and HSL2 are similar, with a membrane-spanning, hydrophobic  $\alpha$ -helix flanked by conserved aa (Supplementary Figure S2B). HSL2 sequences differ from HAE and HSL1 sequences by a shorter  $\alpha$ -helix. HAE sequences can be distinguished from HSL1 by a two aa deletion near the end of the transmembrane domain (Supplementary Figure S2B).

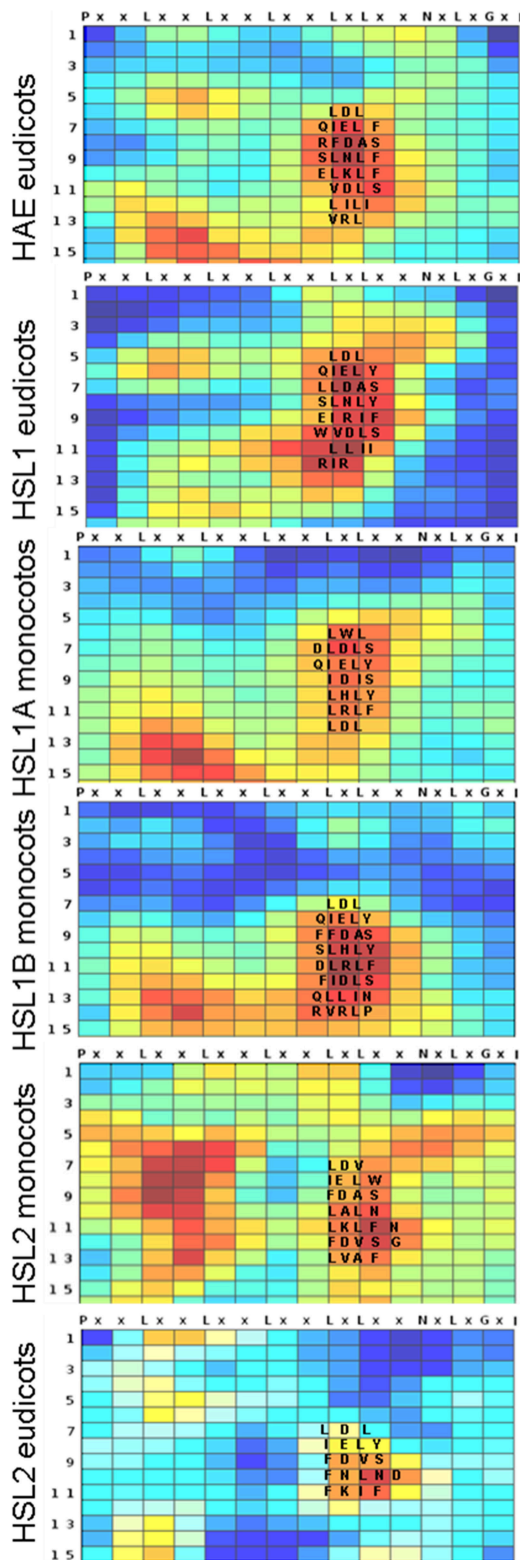
So far, the exact location of the *A. thaliana* mIDA peptide when binding HAE or HSL2 is not known, however, in other cases small peptides have been shown to bind consecutive repeats on the inside pocket of the LRR (Sun et al., 2013). Each repeat has typically 24 residues with six evenly distributed conserved leucine residues (Leu, L), which together with asparagine (Asn, N) and glycine (Gly, G) in conserved positions build the structural framework of the ectodomain (Figure 2). These residues are almost invariable and have therefore limited informative value in a phylogenetic perspective. In contrast, conserved non-structural

residues are interesting since selection pressure conserving residues involved in ligand binding is likely. To identify such residues we employed the Repeat Conservation Mapping (RCM) (<http://144.92.198.58/main/main.php>), which relies on a set of algorithms to identify predicted functional sites of LRR domains. This is accomplished by identifying the extent of conservation of different aa patches on the predicted surface of LRR and generating a colored heat map, displaying how conserved an aa is in a given position in a set of orthologs (Helft et al., 2011). For all the HSL receptors a region with highly conserved aa was stretching from the seventh LRR with the common signature sequence QIEL[Y,F], to the fourteenth LRR (Figure 2). The signatures were more similar between the HAE and HSL1, than HSL2.

## The Bioactive IDA Peptide is Conserved in all Flowering Plants

IDA and IDL are secreted peptides generated from prepropeptides (Figure 3A), where the hydrophobic N-terminus is a signal directing the protein to the secretory pathway. The variable middle part and the C-terminus are assumed to be cleaved off in the apoplasmic space to release a mature 12 aa peptide named PIP after the three first residues, PIPPSAPSKRHN (Butenko et al., 2003). Synthetic mIDA peptide with hydroxylation on the central proline (Pro, P) can bind and activate HSL2 efficiently, and HAE at a higher concentration (Butenko et al., 2014). The Pro residues in positions 2, 3, and 7, serine (Ser, S) in positions 5 and 10, and histidine





**FIGURE 2 | Conserved amino acids in the LRR of HSL proteins.**  
Heatmaps generated using Repeat Conservation Mapping (RCM) of LRR domains (<http://144.92.198.58/main/main.php>) reflecting degree of identity  
(Continued)

### FIGURE 2 | Continued

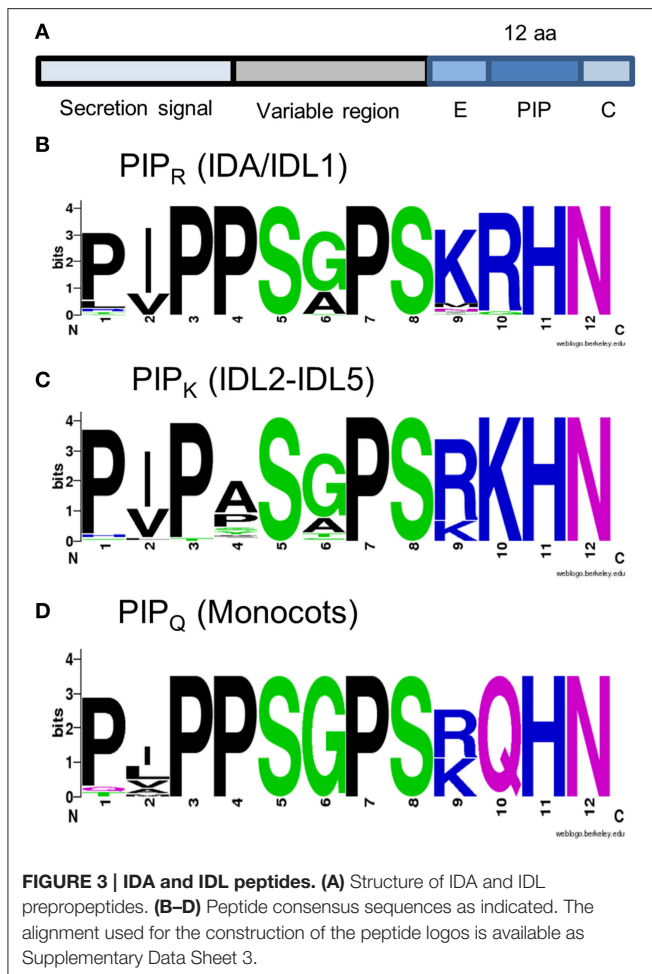
and similarity of aa residues in a given position (X axis) in a given repeat (Y-axis) on the surface of the LRR domain of HAE orthologs from the eudicots, HSL1 from eudicots, HSL1A and B from monocots, HSL2 from eudicot and from monocots. The heatmaps are generated using the same ortholog sequences as used for the phylogenetic analysis (Supplementary Figure S1). The alignments used for heatmap construction are available as Supplementary Data Sheet 2.

(His, H) asparagine (Asn, N) at the end are found in all *A. thaliana* IDA/IDL peptide sequences. Experiments where the part of the *AtIDA* gene encoding PIP was swapped with the corresponding *AtIDL* sequence and the recombinant *AtIDA-IDL* gene introduced in the *ida* mutant, indicate the importance of different aa residues (Stenvik et al., 2008). The *AtIDL1* peptide (LVPPSGPSMRHN) complements the mutation, suggesting that the initial Pro is of little importance, that the hydrophobic isoleucine (Ile, I) and the small central Ala residues can be exchanged with the hydrophobic valine (Val, V) and the small Gly, respectively, without affecting the biological activity, and furthermore that a positively charged aa in position 9 is no absolute requirement. In contrast, *AtIDL2*, *AtIDL3*, *AtIDL4*, and *AtIDL5* cannot fully complement the *ida* mutation (Stenvik et al., 2008). Their PIP motifs are characterized by arginine-lysine (ArgLys, RK) in position 9 and 10, in contrast to the LysArg (KR) found in mIDA.

BLAST and tBLASTn searches were executed using the C-terminal sequences of *A. thaliana* IDA and IDL (i.e., PIP extended with eight aa N-terminally, and the C-terminal aa, **Figure 3A**) BLAST hits were curated for length of the coding region (<120 aa), presence of hydrophobic secretion signal, the C-terminal position of the conserved PIP motif, and the presence of the conserved Pro, Ser, and HisAsn residues. IDA and/or IDL sequences were identified in all groups in our data sets.

We were unable to infer a phylogeny over the evolution of IDA, due to the short sequence of the conserved peptide. IDA lacks phylogenetic information and is also present in a high number of copies in many species; any possible pattern was unclear, with no clear clades, branching patterns, and a general lack of stability. Despite this we attempted an inference based on multiple datasets (PIP, EPIP, and EPIP-C, **Figure 3A**), considering species that have undergone fewer genome duplications (Vanneste et al., 2014), however, without success.

As an alternative approach to understand the evolution of IDA/IDL peptides, we grouped the different PIP motifs of the BLAST-identified proteins based on their amino acid composition. In all eudicots, peptides could be classified either as IDA/IDL1 ([P,L][V,I]PPS[A,G]PSKRHN) or like IDL2-5 (PIP[A,T,H,P]S[A,G]PSRKHN), named PIP<sub>R</sub> and PIP<sub>K</sub> respectively based on the residue in position 10 (**Figures 3B,C**). Both motifs were found in every eudicot species tested. In the monocot dataset PIP<sub>R</sub> was found in the orders Arecales and Zingiberales. Additionally, we identified a version in all monocots with close resemblance to PIP<sub>R</sub>, but containing a glutamine (Gln, Q) in position 10 (PIP<sub>Q</sub>, **Figure 3D**).



## The IDL Gene Family has Expanded in Many Taxa of Core Eudicots

About 65 million years (Myr) ago after the split of the core eudicots into Rosids and Asterids, whole genome duplication (WGD) took place in a number of eudicot lineages and expanded both the number of species and the gene number of each species (Van de Peer et al., 2009). In line with this, detailed inspection suggests independent evolution especially of the *IDL2-5* genes in these two clades. Soybean (*Glycine max*), common bean (*Phaseolus vulgaris*) and *A. thaliana* belong to the Rosids, the beans representing the families of legumes (*Fabales*), and *A. thaliana* belonging to the *Brassicales*. Soybean has six pairs of *IDL* genes, each pair represented only once in common bean, consistent with a late genome duplication in soybean after the separation from bean (Tucker and Yang, 2012). Tomato (*Solanum lycopersicum*), potato (*Solanum tuberosum*), and tobacco (*Nicotiana* ssp.) belong to the family *Solanales* in the Asterid clade, and are considered diploid species. However, analyses of inter- and intrachromosomal duplications in the tomato and potato genomes suggest a second more recent WGD in the common ancestor of *Petunoideae*, *Nicotianoideae*, and *Solanoideae* (Song et al., 2012). We have found pairs of almost identical *IDL* genes both in *N.*

*benthiana* and tomato that are more similar within than between the species (Supplementary Figure S3A), suggesting that additional independent duplications have taken place after the divergence of *Nicotianoideae* and *Solanoideae*. Similarly, we have previously suggested that the *AtIDL2* and *AtIDL3* genes in *A. thaliana* result from a recent duplication event (Stenvik et al., 2008).

## IDA Ligands and HSL Receptors are Expressed in a Variety of AZs and Species

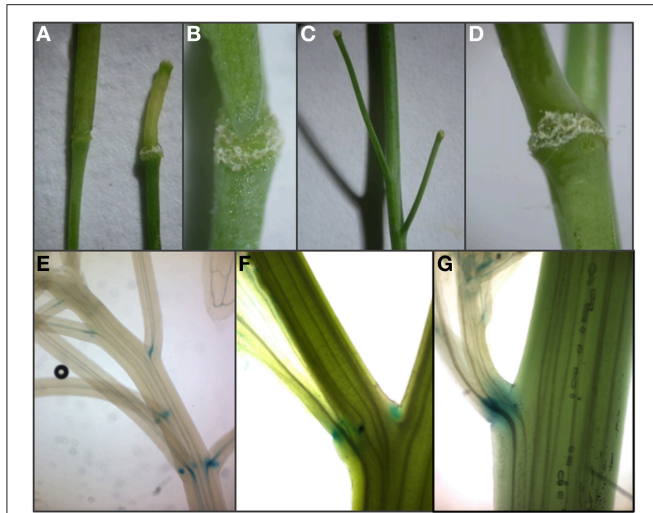
Having identified orthologs of IDA and its receptors in a variety of species, we examined in the literature and experimentally whether IDA/IDL1 and the relevant receptors were likely to be involved in cell separation events.

### Floral Organ and Flower Abscission

Abscission plays an important role during plant reproduction. It is common among eudicots (including *A. thaliana*) to abscise turgid floral organs after pollination, when they no longer are functional (van Doorn, 2001). In some species the function of organs change during development, exemplified by tepals in *Eriophyllum* spp. (Asterales) and *Polygonum* spp. (Caryophyllales) that first act as protection of reproductive organs and later as organs involved in seed dispersal. In monocots floral organs may wither without abscission (van Doorn, 2001, 2002), or the perianth is retained and will cover the fruits during seed maturation. Hence, in such settings IDA and its receptors are not expected to be active. We postulate that the signaling system is intact in monocots in species where abscission of individual organs takes place when the tepals are free, like in tulips (*Tulipa* spp., Liliales). Unfortunately genomic and transcriptomic data are scarce for many monocots, especially the Liliales which have gigantic genomes (Shahin et al., 2012).

Normally *A. thaliana* does not shed cauline leaves, whole flowers or fruits. However, ectopic expression of IDA and IDL peptides in *A. thaliana* leads to induction of abscission in a HAE/HSL2-dependent manner at the base of pedicels, cauline leaves, and inflorescence branches, rather than a general separation of cells in the plant (Figures 4A–D) (Stenvik et al., 2006). These are sites of abscission in other species. Interestingly, *A. thaliana* lines transformed with promoter:GUS constructs for *HAE* or *HSL2* show that the receptor genes are expressed in the vestigial AZs at these sites (Figures 4E–G).

Fall of whole flowers is less common than floral organ abscission (Figure 5A), but occurs in both monocot and eudicot species, when pollination or fertilization fail (van Doorn, 2002). Abscission of immature fruit is a normal event in several cultivated species. In *Citrus* spp. (Sapindales), abscission of flowers and young fruit results from cell separation at an AZ at the base of the floral pedicel. The *CicIDA3* gene, expressed in *Citrus clementina* AZs, encodes a protein with a PIP motif identical to mIDA with the exception of a Gly instead of an Ala in position 6 (Estornell et al., submitted). Overexpression of *CicIDA3* in *A. thaliana* induced the same phenotypic changes as have been shown for overexpression of IDA and *AtIDL1* (Figures 4A–D) (Estornell et al., submitted), suggesting that the



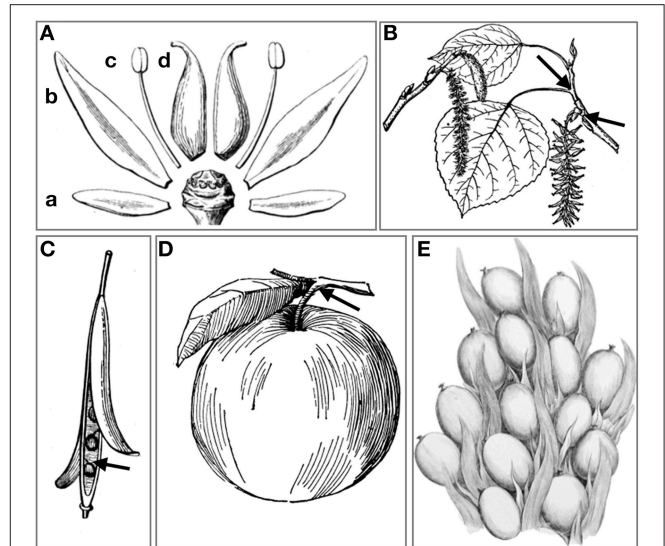
**FIGURE 4 | Expression of *HAE* and *HSL2* promoter: *GUS* constructs at sites of ectopic abscission. (A–C)** Enlargement of AZ and premature abscission of whole flowers and immature fruits compared to wild type silique (to the left in **A**) in *A. thaliana* plants overexpressing *AtIDL1*. **(D)** Enlarged vestigial AZ after abscission of a cauline leaf in *A. thaliana* overexpressing *AtIDL1*. **(E,F)** *pHAE:GUS* expression and **(G)** *pHSL2:GUS* expression in vestigial AZs at the bases of pedicels, branches, and cauline leaves.

citrus prepropeptide undergo the correct processing, that the *Citrus* peptide can activate IDA's receptors and thus provides experimental evidence supporting a function in citrus abscission events.

### Leaf Abscission

AZs, with layers of rather undifferentiated small cells, are normally formed during organ development both in *A. thaliana* and other species. Additionally, ethylene may promote the formation of new AZs and thereby induce abscission (Roberts et al., 2000). A thorough investigation of IDA and HAE/HSL2 in connection with ethylene-induced leaf abscission has been performed in soybean (*Glycine max*), common bean and tomato (Tucker and Yang, 2012). Of the five genes encoding tomato IDA/IDL peptides, one with a PIP motif identical to that of mIDA was expressed in ethylene-induced AZs on leaf pedicels. Likewise, the GmIDA2a and 2b, which had the highest expression level in leaf AZ and the highest relative expression ratio between AZ and petiole tissue both in the presence and absence of ethylene, are the paralogs most similar to *AtIDA*, which also display ethylene independent expression. The GmHAE3b and GmHAE5a/5b with the highest similarities to *A. thaliana* HAE and HSL2, respectively, were also adequately expressed in the petiole (Tucker and Yang, 2013). Thus, these expression patterns support the involvement of the IDA-HAE/HSL2 module in leaf abscission both in Rosids and Asterids.

One of the most visible of all shedding processes in angiosperms is the leaf fall (**Figure 5B**) at the beginning of the dormant (i.e., cold or dry) season in deciduous trees, triggered by seasonal reduction of the photoperiod and temperature (Taylor and Whitelaw, 2001; Keskitalo et al., 2005). Autumnal



**FIGURE 5 | Modes of abscission. (A)** Abscission of (a) sepals, (b) petals, (c) stamen, and (d) carpels. **(B)** Abscission of leaves at the axil of the pedicel, and abscission of entire male inflorescence (catkin) in *Populus* spp. **(C)** Opening of valves in dehiscence zones of dry many-seeded capsules, and abscission of individual seeds. **(D)** Abscission of fleshy fruits at AZ on pedicel. **(E)** The oil palm drupe fruit are tightly arranged within spikelets and abscise one by one when ripe. **(A–D)** Image courtesy the private collection of Roy Winkelman. First published in Gray (1858) and Foster (1921). **(E)** Image courtesy Missouri Botanical Garden. <http://www.botanicus.org>.

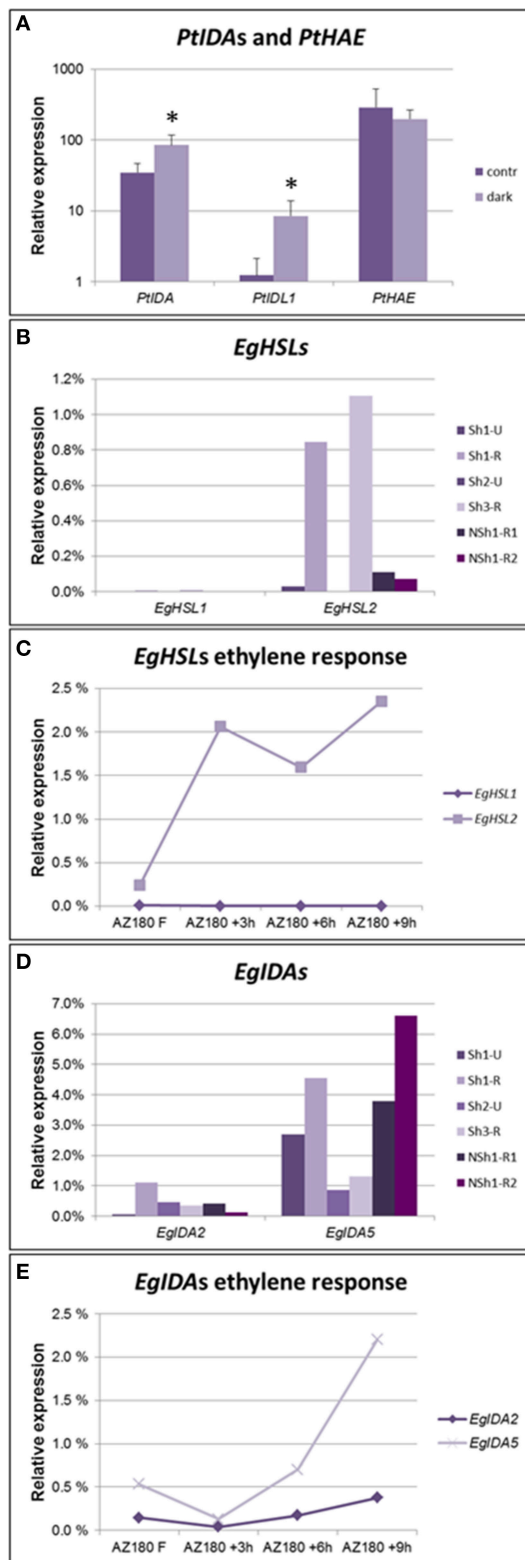
leaf abscission provides deciduous trees with resistance against drought and freezing damage (Fischer and Polle, 2010; Zanne et al., 2014). Species with N-fixing symbionts like alder (*Alnus* spp., Fagales) can afford to lose green leaves, while other deciduous trees, like *Populus* spp. (Malpighiales), withdraw elements of valuable molecules (as chlorophyll) and shed yellowish or reddish leaves (Keskitalo et al., 2005; Fracheboud et al., 2009). Hence, the senescence process that allows trees to conserve resources and prepare for a dormant period terminates in a cell separation event in preformed AZs at the base of the pedicels.

Leaf abscission can be induced in hybrid aspen (*Populus tremula* X *P. tremuloides*) by depriving the leaves of light (Jin et al., 2015). In our experimental setup, 50% of the shaded leaves separated from the branch at the axil after 8 days, while non-shaded leaves were not shed. We designed gene-specific primers against the *IDA*, *IDL1*, and *HAE* orthologs of *Populus* spp., which seem to have lost the *HSL2* ortholog. The two genes most similar to *AtIDA* were significantly upregulated in the axil upon induction of leaf abscission (**Figure 6A**). As in soybean, the expression levels of the receptors did not change in the course of this experiment, suggesting that the timing of abscission is rather dependent on the induction of IDA peptides than on the transcriptional regulation of the receptor.

### Seed and Fruit Abscission

The fertilized ovule of Angiosperms (the seed) and surrounding maternal tissue that together constitutes the fruit, needs to be separated from the mother plant in one way or another when





**FIGURE 6 | Expression levels of genes encoding IDA ligands and HSL receptors in AZs. (A)** qPCR detecting increased expression levels of *Populus* IDA genes, but not the *PtHAE* gene in axils of shade-treated leaves prone to (Continued)

#### FIGURE 6 | Continued

abscise compared to axils in non-shaded, non-abscission aspen leaves. qPCR, averages and standard deviations of three biological replicates. Normalized to *PtACTIN1* expression. \* $p < 0.05$ , *t*-test, non-shaded vs. shaded. **(B)** qPCR analysis of oil palm *EgHSL1* and *EgHSL2* expression in AZs from unripe (Sh1-U and Sh2-U) not actively abscising fruit and AZs of ripe (Sh1-R, Sh3-R) actively abscising fruit, as well as AZs from ripe fruit of a non-abscising tree (NSh1-R1, NSh1-R2). **(C)** qPCR analyses of oil palm *EgHSL* expression during ethylene-induced abscission in ripe 180 DAP fruits. Samples were taken after 0, 3, 6, and 9 h treatment with ethylene. Similar results were obtained when treating 145 DAP fruits (Supplementary Figure S3C). In both experiments fruit separated by 9 h of ethylene treatment. **(D)** qPCR analysis of oil palm *EgIDA2* and *EgIDA5* expression in the AZs of unripe (Sh1-U and Sh2-U) not actively abscising fruit and AZs of ripe (Sh1-R, Sh3-R) actively abscising fruit, as well as AZs from ripe fruit of a non-abscising tree (NSh1-R1, NSh1-R2). Expression levels of additional *EgIDA* genes are found in Supplementary Figure S3D. **(E)** qPCR analyses of oil palm *EgIDA2* and *EgIDA5* expression during ethylene-induced abscission in ripe 180 DAP fruits. Samples were taken after 0, 3, 6, and 9 h treatment with ethylene. Similar results were obtained when treating 145 DAP fruits (Supplementary Figure S3E). In both experiments fruit separated by 9 h of ethylene treatment.

ripe. In botanical terms there are roughly four main types of fruits: *berries* (fleshy most often many-seeded fruits), *drupes* (fleshy most often one-seeded fruits with hard exocarp), *capsules*, including siliques and pods (dry many-seeded fruits), and *nuts*, including caryopses of grasses (dry one-seeded fruits). Nuts are shed and abscised at the base of the carpels, while many-seeded capsules or pods open along dehiscence zones (Figure 5C). This is seen in a wide range of angiosperms such as orchids (*Asparagales*), poppies (*Papaver* spp., Ranunculales), and tobacco (*Nicotiana tabacum*, Solanales) as well as *A. thaliana*, before each single seed abscise where the funiculus is attached to the seed. We have earlier reported that *AtIDA* and *HAE* are expressed in *A. thaliana* dehiscence zones (Butenko et al., 2006).

For fleshy fruit eaten directly from the plant by birds or animals e.g., blueberries (*Vaccinium myrtillus*, Ericales), abscission is not necessitated for seed dispersal. Nevertheless, both larger fruits like apples (*Malus domestica*, Rosales) (Figure 5D) and drupes like olives (*Olea europaea*, Asterides) (Gil-Amado and Gomez-Jimenez, 2013) may abscise at the apex or at the base of the pedicel (fruit stalk), so that animals may pick up the fruits from the ground. In line with this, *HAE* was recently shown to be strongly upregulated in abscising olives compared to the preabscising AZs (Gil-Amado and Gomez-Jimenez, 2013).

To test whether IDA-HAE/HSL2 is involved in control of fruit abscission also in monocots we chose to investigate abscission of the fruits of oil palm (*Elaeis guineensis*, Arecales). The flowers of the oil palm grow in large clusters giving rise to plumb-sized reddish fruits in large bunches (Figure 5E) that have large, preformed, multilayered AZs at the boundary of the mesocarp and the pedicel. Under natural conditions it takes about 160 days from pollination until the fruits are ripe and start separating from the bunches on the trees. mRNA was isolated from AZs of unripe and ripe fruit of trees that abscise their fruit (Shedding—Sh1, Sh2, and Sh3), and additionally from AZs of an unusual tree (Non-shedding, NSh1) that fails to abscise its fruit. We identified genes encoding HSL1 and HSL2



receptors; *EgHSL1* had a very low expression level that did not change over time (Figure 6B). *EgHSL2* on the other hand was low in unripe AZs of shedding trees, as well as AZs of ripe NSh1 fruit, but increased strongly in AZs of ripe fruit of abscising trees. From about 145 DAP, ethylene treatment induce fruit abscission after 9 h. This treatment also induces increased *EgHSL2* expression (Figures 6C, Supplementary Figure S3C). Thus, *EgHSL2* expression was consistently associated with active fruit abscission.

We identified 10 *IDA* oil palm genes that come in five pairs encoding almost identical preproproteins (Supplementary Figure S3B), suggesting recent genome duplication. Expression of five of these genes (*EgIDA2* to *EgIDA6*) was detected in AZs of *E. guineensis* fruits using RT qPCR (Supplementary Figure S3D). In trees showing fruit abscission *EgIDA2*, *EgIDA4* and the most abundant, *EgIDA5*, all had their highest expression levels when fruit are separating (Figure 6D), and *EgIDA2* and *EgIDA5* could also be induced by ethylene (Figure 6E). These genes encode PIPs near to identical with *mIDA*; like *CicIDA3*, *EgIDA5* differs only by an exchange of the small Ala with the small Gly in position 6. Interestingly, the *EgIDA* genes were not strictly associated with separation; as transcripts were present also in ripe AZs of the non-shedding tree (Figure 6C). Hence, *EgIDA* are expressed and induced in NSh1 although the receptor gene *EgHSL2* has a very low level of expression.

## DISCUSSION

Our phylogenetic analyses of the HSL LRR-RLKs have revealed that the evolution of this receptor family is congruent with that of angiosperm species evolution, and makes it likely that the common ancestor of angiosperms had both a *HSL1* and a *HSL2* gene (Figure 7). Both receptors are present already in the basal angiosperm (e.g., *Amborella*), where stamen abscission is a common feature that facilitates the access of pollinators (beetles and flies bringing pollen from other flowers) to the female organ (Endress, 2010). The *IDA* gene with PIP<sub>R</sub> motif identified in *Amborella*, may play a role here, similar to IDA's role as a signaling ligand in sepal, petal, and stamen abscission in *A. thaliana* (Butenko et al., 2003, 2014).

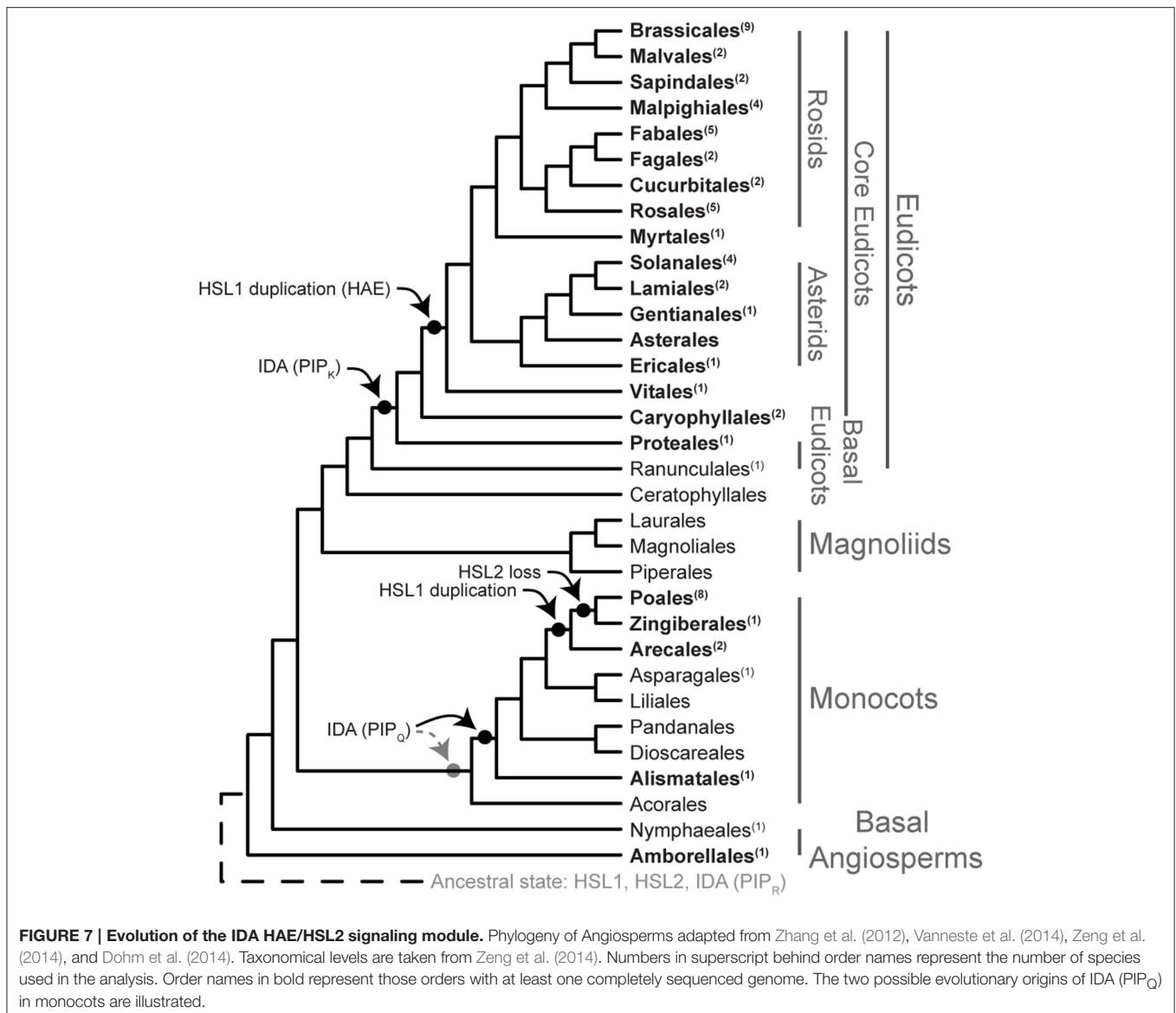
While the receptors follow the general evolution of the angiosperms, the PIP<sub>R</sub> motif likely to represent the peptide released from the propeptide upon secretion, has virtually been preserved without substantial changes throughout the evolution of flowering plants. In a short peptide that presumably shall bind to given aa side chains in the receptor, there are limited possibilities for aa changes that retain the relevant binding properties: Exchange of one small aa for another might pass, but exchange of an aa with different size or charge of the side chain (like a Lys or a Asn for an Arg), may affect the structure of the ligand and its binding properties (Czyzewicz et al., 2015).

The genome of a common ancestor of flowering plants has been suggested to harbor between 10,000 and 14,000 genes (Tang et al., 2008) while a genome size of 25,000–50,000 genes is common in modern angiosperms. This increase is due to a number of WGD, including a triplication in dicots before the separation of the *Vitis*. Two additional duplications and a

subsequent extensive loss of duplicated genes occurred in *A. thaliana* (Tang et al., 2008; Van de Peer et al., 2009). Relevant for our analyses is that *HSL1* has been duplicated in two separate events: Firstly, before the split of Vitales, Asterids, and Rosids, within eudicots to form *HAE*, and secondly, within monocots to form a more recent duplication before the split of Arecales. Still, multiple synteny investigations between five different and partly distantly related species (*Arabidopsis*, *Carica*, *Populus*, *Vitis*, and *Oryza*) showed that a total of 61% of the *A. thaliana* genes had preserved their ancestral locations (Tang et al., 2008). There are controversies regarding the placement of the smaller clades of Ceratophyllales and Caryophyllales, as well as Vitales, in relation to the eudicots (Zeng et al., 2014). Our analyses of the three receptor genes support Vitales and Caryophyllales as sister groups of the core eudicots. *HSL1/HAE* duplication is found on syntenic genome regions in the other eudicots, but not rice, supporting that *HAE* was generated by a WGD event (Tang et al., 2008). Specific genomic locations of *AtIDA* and *HSL2* and their neighboring genes in *A. thaliana* are preserved in *Populus* and *Vitis*, respectively (Woodhouse et al., 2011). The *IDL4* is positioned in synteny with other eudicots, but the other *IDL* genes may rather be a result of duplications known to have taken place after the divergence of Brassicaceae and Caricaceae families (Tang et al., 2008).

Duplications provide the opportunity for the new copy to evolve, like giving rise to the PIP<sub>K</sub> or PIP<sub>Q</sub> motif varieties. Transition from Arg to Lys or Gln may only require one nucleotide change. Based on available sequence data we hypothesize that *IDL4* with PIP<sub>K</sub> evolved before the split of Proteales, however this variant may have a more basal history within angiosperm evolution. Likewise, the PIP<sub>Q</sub> version has presumably developed after genome duplication in the monocot lineage, and we hypothesize that PIP<sub>Q</sub> is present in all monocot orders (Figure 7). Sequence data for Acorales is needed to substantiate this. PIP<sub>R</sub> may represent the original peptide gene that has been lost from some of the monocot orders: Alismatales and Poales are devoid of the gene, whilst it is present in Arecales and Zingiberales, suggesting independent loss for some lineages. This is more parsimonious than a basal loss within the monocots followed by multiple gains. A final conclusion must await genomic sequencing of species from orders where data at present are lacking.

We have evidence from *A. thaliana* that *IDA* can be substituted with *AtIDL1*, but the other *AtIDL* genes only to a limited extent can substitute for *IDA* function, indicating that their encoded peptides do not interact properly with the *HAE* and *HSL2* receptors (Stenvik et al., 2008). The high similarity between conserved aa in the ectodomain as well as the kinase domain of *HSL1* compared to *HAE*, might suggest *HSL1* to be their native receptor. This would require closely related expression patterns for *HSL1* and *IDL* genes. However, at least in *Arabidopsis*, the expression patterns of *HSL1* and these *IDL* genes do not suggest involvement in floral organ abscission (Cho et al., 2008; Stenvik et al., 2008), and mutant phenotypes are so far lacking. Different methods have lately been suggested for testing of peptide-ligand receptor interactions (Butenko et al., 2009, 2012, 2014). Interaction of the *mIDA*



peptide with HSL2 expressed in *N. benthamiana*, results in an immediate oxidative burst, similar to elicited LRR-RLKs involved in pathogen defense (Butenko et al., 2014). A thousand times more peptide is needed to provoke such a reaction from the HAE receptor under the same conditions, although the two receptors in genetic terms are functionally redundant with respect to control of floral organ abscission (Cho et al., 2008; Butenko et al., 2014). We have found distinct evolutionarily conserved differences between the kinase domains of HAE/HSL1 and that of HSL2. This may explain the differences in readout between HAE and HSL2 in the presence of IDA or IDL peptides (Butenko et al., 2014).

Interestingly, within monocots *HSL1* has been duplicated before the split-off of the Arecales, and *HSL2* has been lost after the split of Arecales, leaving the orders Poales, and Zingiberales devoid of the gene. Abscission still takes place in these orders, e.g., “finger drop” in banana (*Musa* spp.) and caryopsis shedding

(diminished in the domesticated species) in the grasses. We have demonstrated that oil palm of the Arecales use *HSL2* and *IDA* genes encoding PIP<sub>R</sub> peptides in connection to fruit abscission. It is tempting to suggest that the PIP<sub>Q</sub> version of the IDA peptide have developed to fit one or the other HSL1 receptors.

We have presented examples of the presence of IDA and its receptors in all the major groups of Angiosperms during abscission of floral organs, flowers, immature, and mature fruits and of leaves. The first Angiosperm developed more than 150 Myr ago, and IDA ligands may have been conserved most of this time. At the same time the number of IDA and receptor genes has increased and a variety of modes of organ detachment has developed. This lends support to the notion that it is not what you do, but where and when you do it that is important (Carroll, 2008). New gene copies have presumably made it possible to change place and time for cell separation events.

## AUTHOR CONTRIBUTIONS

IS, RO, KF, XJ, JK, and IN performed the research; IS, RO, UF, TT, and RA analyzed the data; IN and RA designed the research, RA wrote the article with contributions from IS, RO, UF, TT, and IN.

## FUNDING

This research was supported by grant no 213785 from the Research Council of Norway to RA; by Deutsche Forschungsgemeinschaft (DFG, Fi1661/1-1) to UF; to XJ by Bio4Energy, the Berzelii Centre (Vinnova) and Stiftelsen Mauritz

Carlgrens Fond; and by Franco-Thai and Thailand Graduate Institute of Science and Technology (TGIST) scholarships to KF, and funding from PalmElit SAS (KF, TT).

## ACKNOWLEDGMENTS

We thank Nora M. Tandstad for the images of 35S:IDL1 plants, and Even Sannes Riiser for the *pHAE:GUS* and *pHSL2:GUS* reporter lines. We thank Anek Limsrivilai at GoldenTenera Oil Palm Plantation in Thailand and Roberto Poveda at the PDA/Murrin Company in Quinindé, Ecuador for the oil palm material. We appreciate the technical support from Julien Serret for the oil palm qPCR analysis.

## REFERENCES

- Aalen, R. B. (2011). "Flower and floral organ abscission - control, gene expression and hormone interaction," in *The Flowering Process and its Control in Plants: Gene Expression and Hormone Interaction*, ed M. W. Yaish (Trivandrum: Research Signpost/Transworld Research Network), 307–327.
- Aalen, R. B., Wildhagen, M., Sto, I. M., and Butenko, M. A. (2013). IDA: a peptide ligand regulating cell separation processes in *Arabidopsis*. *J. Exp. Bot.* 64, 5253–5261. doi: 10.1093/jxb/ert338
- Abascal, F., Zardoya, R., and Posada, D. (2005). ProtTest: selection of best-fit models of protein evolution. *Bioinformatics* 21, 2104–2105. doi: 10.1093/bioinformatics/bti263
- Bleecker, A. B., and Patterson, S. E. (1997). Last exit: senescence, abscission, and meristem arrest in *Arabidopsis*. *Plant Cell* 9, 1169–1179. doi: 10.1105/tpc.9.7.1169
- Butenko, M. A., Albert, M., and Aalen, R. B. (2012). "Methods to identify new partners of plant signalling peptides," in *Plant Signaling Peptides*, eds H. R. Irving and C. Gehring (Berlin; Heidelberg: Springer-Verlag), 241–256.
- Butenko, M. A., Patterson, S. E., Grini, P. E., Stenvik, G. E., Amundsen, S. S., Mandal, A., et al. (2003). Inflorescence deficient in abscission controls floral organ abscission in *Arabidopsis* and identifies a novel family of putative ligands in plants. *Plant Cell* 15, 2296–2307. doi: 10.1105/tpc.014365
- Butenko, M. A., Stenvik, G.-E., Alm, V., Sæther, B., Patterson, S. E., and Aalen, R. B. (2006). Ethylene-dependent and -independent pathways controlling floral abscission are revealed to converge using promoter::reporter gene constructs in the *ida* abscission mutant. *J. Exp. Bot.* 57, 3627–3637. doi: 10.1093/jxb/erl130
- Butenko, M. A., Vie, A. K., Brembu, T., Aalen, R. B., and Bones, A. M. (2009). Plant peptides in signalling: looking for new partners. *Trends Plant Sci.* 14, 255–263. doi: 10.1016/j.tplants.2009.02.002
- Butenko, M. A., Wildhagen, M., Albert, M., Jehle, A., Kalbacher, H., Aalen, R. B., et al. (2014). Tools and strategies to match peptide-ligand receptor pairs. *Plant Cell* 26, 1838–1847. doi: 10.1105/tpc.113.120071
- Carroll, S. B. (2008). Evo-Devo and an expanding evolutionary synthesis: a genetic theory of morphological evolution. *Cell* 134, 25–36. doi: 10.1016/j.cell.2008.06.030
- Castresana, J. (2000). Selection of conserved blocks from multiple alignments for their use in phylogenetic analysis. *Mol. Biol. Evol.* 17, 540–552. doi: 10.1093/oxfordjournals.molbev.a026334
- Cho, H.-T., and Cosgrove, D. (2000). Altered expression of expansin modulates leaf growth and pedicel abscission in *Arabidopsis thaliana*. *Proc. Natl. Acad. Sci. U.S.A.* 97, 9783–9788. doi: 10.1073/pnas.160276997
- Cho, S. K., Larue, C. T., Chevalier, D., Wang, H., Jinn, T. L., Zhang, S., et al. (2008). Regulation of floral organ abscission in *Arabidopsis thaliana*. *Proc. Natl. Acad. Sci. U.S.A.* 105, 15629–15634. doi: 10.1073/pnas.0805539105
- Curtis, M. D., and Grossniklaus, U. (2003). A gateway cloning vector set for high-throughput functional analysis of genes in planta. *Plant Physiol.* 133, 462–469. doi: 10.1104/pp.103.027979
- Czyzewicz, N., Wildhagen, M., Cattaneo, P., Stahl, Y., Pinto, K. G., Aalen, R. B., et al. (2015). Antagonistic peptide technology for functional dissection of CLE peptides revisited. *J. Exp. Bot.* 66, 5367–5374. doi: 10.1093/jxb/erv284
- Dohm, J. C., Minoche, A. E., Holtgräwe, D., Capella-Gutiérrez, S., Zakrzewski, F., Tafer, H., et al. (2014). The genome of the recently domesticated crop plant sugar beet (*Beta vulgaris*). *Nature* 505, 546–549. doi: 10.1038/nature12817
- Durek, P., Schmidt, R., Heazlewood, J. L., Jones, A., Maclean, D., Nagel, A., et al. (2010). PhosPhAt: the *Arabidopsis thaliana* phosphorylation site database. An update. *Nucleic Acids Res.* 38, D828–D834. doi: 10.1093/nar/gkp810
- Endress, P. K. (2010). The evolution of floral biology in basal angiosperms. *Philos. Trans. R. Soc. Lond. B Biol. Sci.* 365, 411–421. doi: 10.1098/rstb.2009.0228
- Fischer, U., and Polle, A. (2010). "Populus responses to abiotic stress," in *Genetics and Genomics of Populus*, eds S. Jansson, R. Bhalerao, and A. Groover (New York, NY: Springer), 225–246.
- Fracheboud, Y., Luquez, V., Björken, L., Sjödin, A., Tuominen, H., and Jansson, S. (2009). The control of autumn senescence in European aspen. *Plant Physiol.* 149, 1982–1991. doi: 10.1104/pp.108.133249
- Foster, E. D. (1921). *The American Educator*. Vol. 1, Chicago, IL: Ralph Durham Company.
- Gil-Amado, J. A., and Gomez-Jimenez, M. C. (2013). Transcriptome analysis of mature fruit abscission control in olive. *Plant Cell Physiol.* 54, 244–269. doi: 10.1093/pcp/pcs179
- González-Carranza, Z. H., Elliott, K. A., and Roberts, J. A. (2007). Expression of polygalacturonases and evidence to support their role during cell separation processes in *Arabidopsis thaliana*. *J. Exp. Bot.* 58, 3719–3730. doi: 10.1093/jxb/erm222
- Gray, A. (1858). *How Plants Grow; A Simple Introduction to Structural Botany*. New York, NY: American Book Company.
- Helft, L., Reddy, V., Chen, X., Koller, T., Federici, L., Fernández-Recio, J., et al. (2011). LRR conservation mapping to predict functional sites within protein leucine-rich repeat domains. *PLoS ONE* 6:e21614. doi: 10.1371/journal.pone.0021614
- Jin, X., Zimmermann, J., Polle, A., and Fischer, U. (2015). Auxin is a long-range signal that acts independently of ethylene signaling on leaf abscission in *Populus*. *Front. Plant Sci.* 6:634. doi: 10.3389/fpls.2015.00634
- Katoh, K., and Toh, H. (2008). Improved accuracy of multiple ncRNA alignment by incorporating structural information into a MAFFT-based framework. *BMC Bioinformatics* 9:212. doi: 10.1186/1471-2105-9-212
- Keskitalo, J., Bergquist, G., Gardeström, P., and Jansson, S. (2005). A cellular timetable of autumn senescence. *Plant Physiol.* 139, 1635–1648. doi: 10.1104/pp.105.066845
- Kumpf, R. P., Shi, C.-L., Larrieu, A., Sto, I. M., Butenko, M. A., Péret, B., et al. (2013). Floral organ abscission peptide IDA and its HAE/HSL2 receptors control cell separation during lateral root emergence. *Proc. Natl. Acad. Sci. U.S.A.* 110, 5235–5240. doi: 10.1073/pnas.1210835110
- Lashbrook, C. C., and Cai, S. (2008). Cell wall remodeling in *Arabidopsis* stamen abscission zones: temporal aspects of control inferred from transcriptional profiling. *Plant Signal. Behav.* 3, 733–736. doi: 10.4161/psb.3.9.6489



- Lewis, M. W., Leslie, M. E., and Liljegren, S. J. (2006). Plant separation: 50 ways to leave your mother. *Curr. Opin. Plant Biol.* 9, 59–65. doi: 10.1016/j.pbi.2005.11.009
- Liu, B., Butenko, M. A., Shi, C.-L., Bolivar, J. L., Winge, P., Stenvik, G.-E., et al. (2013). Nevershed and inflorescence deficient in abscission are differentially required for cell expansion and cell separation during floral organ abscission in *Arabidopsis thaliana*. *J. Exp. Bot.* 64, 5345–5357. doi: 10.1093/jxb/ert232
- Meir, S., Philosoph-Hadas, S., Sundaresan, S., Selvaraj, K. S. V., Burd, S., Ophir, R., et al. (2010). Microarray analysis of the abscission-related transcriptome in the tomato flower abscission zone in response to auxin depletion. *Plant Physiol.* 154, 1929–1956. doi: 10.1104/pp.110.160697
- Niederhuth, C. E., Patharkar, O. R., and Walker, J. C. (2013). Transcriptional profiling of the *Arabidopsis* abscission mutant hae hsl2 by RNA-Seq. *BMC Genomics* 14:37. doi: 10.1186/1471-2164-14-37
- Patterson, S. E. (2001). Cutting loose. *Abscission and dehiscence in Arabidopsis*. *Plant Physiol.* 126, 494–500. doi: 10.1104/pp.126.2.494
- Roberts, J. A., Elliot, K. A., and Gonzalez-Carranza, Z. H. (2002). *Abscission, dehiscence and other cell separation processes*. *Annu. Rev. Plant Biol.* 53, 131–158. doi: 10.1146/annurev.arplant.53.092701.180236
- Roberts, J. A., Whitelaw, C. A., Gonzalez-Carranza, Z. H., and McManus, M. T. (2000). Cell separation processes in plants—models, mechanisms and manipulation. *Ann. Bot.* 86, 223–235. doi: 10.1006/anbo.2000.1203
- Roongsatham, P., Morcillo, F., Jantasuriyarat, C., Pizot, M., Moussu, S., Jayaweera, D., et al. (2012). Temporal and spatial expression of polygalacturonase gene family members reveals divergent regulation during fleshy fruit ripening and abscission in the monocot species oil palm. *BMC Plant Biol.* 12:150. doi: 10.1186/1471-2229-12-150
- Shahin, A., Van Kaauwen, M., Esselink, D., Bargsten, J., Van Tuyl, J. W., Visser, R. G., et al. (2012). Generation and analysis of expressed sequence tags in the extreme large genomes *Lilium* and *Tulipa*. *BMC Genomics* 13:640. doi: 10.1186/1471-2164-13-640
- Shiu, S. H., and Bleecker, A. B. (2001). Receptor-like kinases from *Arabidopsis* form a monophyletic gene family related to animal receptor kinases. *Proc. Natl. Acad. Sci. U.S.A.* 98, 10763–10768. doi: 10.1073/pnas.181141598
- Song, C., Guo, J., Sun, W., and Wang, Y. (2012). Whole genome duplication of intra- and inter-chromosomes in the tomato genome. *J. Genet. Genomics* 39, 361–368. doi: 10.1016/j.jgg.2012.06.002
- Stamatakis, A. (2006). RAxML-VI-HPC: maximum likelihood-based phylogenetic analyses with thousands of taxa and mixed models. *Bioinformatics* 22, 2688–2690. doi: 10.1093/bioinformatics/btl446
- Stenvik, G.-E., Butenko, M. A., Urbanowicz, B. R., Rose, J. K., and Aalen, R. B. (2006). Overexpression of inflorescence deficient in abscission activates cell separation in vestigial abscission zones in *Arabidopsis*. *Plant Cell* 18, 1467–1476. doi: 10.1105/tpc.106.042036
- Stenvik, G.-E., Tandstad, N. M., Guo, Y., Shi, C.-L., Kristiansen, W., Holmgren, A., et al. (2008). The EPIP peptide of inflorescence deficient in abscission is sufficient to induce abscission in *Arabidopsis* through the receptor-like kinases HAESA and HAESA-LIKE2. *Plant Cell* 20, 1805–1817. doi: 10.1105/tpc.108.059139
- Sun, Y., Li, L., Macho, A. P., Han, Z., Hu, Z., Zipfel, C., et al. (2013). Structural basis for flg22-Induced activation of the *Arabidopsis* FLS2-BAK1 immune complex. *Science* 342, 624–628. doi: 10.1126/science.1243825
- Tang, H., Wang, X., Bowers, J. E., Ming, R., Alam, M., and Paterson, A. H. (2008). Unraveling ancient hexaploidy through multiply-aligned angiosperm gene maps. *Genome Res.* 18, 1944–1954. doi: 10.1101/gr.080978.108
- Taylor, I., Seitz, K., Bennewitz, S., and Walker, J. C. (2013). A simple *in vitro* method to measure autophosphorylation of protein kinases. *Plant Methods* 9:22. doi: 10.1186/1746-4811-9-22
- Taylor, J. E., and Whitelaw, C. A. (2001). Signals in abscission. *New Phytol.* 151, 323–339. doi: 10.1046/j.0028-646x.2001.00194.x
- Tsuchiya, M., Satoh, S., and Iwai, H. (2015). Distribution of XTH, expansin, and secondary-wall-related CesA in floral and fruit abscission zones during fruit development in tomato (*Solanum lycopersicum*). *Front. Plant Sci.* 6:323. doi: 10.3389/fpls.2015.00323
- Tucker, M. L., and Yang, R. (2012). IDA-like gene expression in soybean and tomato leaf abscission and requirement for a diffusible stelar abscission signal. *AoB Plants* 2012:pls035. doi: 10.1093/aobpla/pls035
- Tucker, M. L., and Yang, R. (2013). A gene encoding a peptide with similarity to the plant IDA signaling peptide (AtIDA) is expressed most abundantly in the root-knot nematode (*Meloidogyne incognita*) soon after root infection. *Exp. Parasitol.* 134, 165–170. doi: 10.1016/j.exppara.2013.03.019
- Van de Peer, Y., Fawcett, J. A., Proost, S., Sterck, L., and Vandepoele, K. (2009). The flowering world: a tale of duplications. *Trends Plant Sci.* 14, 680–688. doi: 10.1016/j.tplants.2009.09.001
- van Doorn, W. G. (2001). Categories of petal senescence and abscission: a re-evaluation. *Ann. Bot.* 87, 447–456. doi: 10.1006/anbo.2000.1357
- van Doorn, W. G. (2002). Effect of ethylene on flower abscission: a survey. *Ann. Bot.* 89, 689–693. doi: 10.1093/aob/mcf124
- Vanneste, K., Baele, G., Maere, S., and Van de Peer, Y. (2014). Analysis of 41 plant genomes supports a wave of successful genome duplications in association with the Cretaceous–Paleogene boundary. *Genome Res.* 24, 1334–1347. doi: 10.1101/gr.168997.113
- Wang, X., Goshe, M. B., Soderblom, E. J., Phinney, B. S., Kuchar, J. A., Li, J., et al. (2005). Identification and functional analysis of *in vivo* phosphorylation sites of the *Arabidopsis* brassinosteroid-insensitive1 receptor kinase. *Plant Cell* 17, 1685–1703. doi: 10.1105/tpc.105.031393
- Woodhouse, M. R., Tang, H., and Freeling, M. (2011). Different gene families in *Arabidopsis thaliana* transposed in different epochs and at different frequencies throughout the rosids. *Plant Cell* 23, 4241–4253. doi: 10.1105/tpc.111.093567
- Zanne, A. E., Tank, D. C., Cornwell, W. K., Eastman, J. M., Smith, S. A., FitzJohn, R. G., et al. (2014). Three keys to the radiation of angiosperms into freezing environments. *Nature* 506, 89–92. doi: 10.1038/nature12872
- Zeng, L., Zhang, Q., Sun, R., Kong, H., Zhang, N., and Ma, H. (2014). Resolution of deep angiosperm phylogeny using conserved nuclear genes and estimates of early divergence times. *Nat. Commun.* 5:4956. doi: 10.1038/ncomms5956
- Zhang, N., Zeng, L., Shan, H., and Ma, H. (2012). Highly conserved low-copy nuclear genes as effective markers for phylogenetic analyses in angiosperms. *New Phytol.* 195, 923–937. doi: 10.1111/j.1469-8137.2012.04212.x

**Conflict of Interest Statement:** The authors declare that the research was conducted in the absence of any commercial or financial relationships that could be construed as a potential conflict of interest.

Copyright © 2015 Sto, Orr, Fooyontphanich, Jin, Knutsen, Fischer, Tranbarger, Nordal and Aalen. This is an open-access article distributed under the terms of the Creative Commons Attribution License (CC BY). The use, distribution or reproduction in other forums is permitted, provided the original author(s) or licensor are credited and that the original publication in this journal is cited, in accordance with accepted academic practice. No use, distribution or reproduction is permitted which does not comply with these terms.