

Evolutionary developmental genetics of fruit morphological variation within the Solanaceae

Li Wang¹, Jing Li^{1,2}, Jing Zhao^{1,2} and Chaoying He^{1*}

¹ State Key Laboratory of Systematic and Evolutionary Botany, Institute of Botany – Chinese Academy of Sciences, Beijing, China, ² Graduate University of Chinese Academy of Sciences, Beijing, China

OPEN ACCESS

Edited by:

Dazhong Dave Zhao,
University of Wisconsin-Milwaukee,
USA

Reviewed by:

Zhongchi Liu,
University of Maryland, USA
Cristina Ferrandiz,
Consejo Superior de Investigaciones
Científicas – Instituto de Biología
Molecular y Celular de Plantas, Spain
Stefan De Folter,
Cinvestav – Instituto Politécnico
Nacional, Mexico
Amy Litt,
University of California, Riverside, USA

*Correspondence:

Chaoying He,
State Key Laboratory of Systematic
and Evolutionary Botany, Institute
of Botany – Chinese Academy
of Sciences, Nanxincun 20,
Xiangshan, 100093 Beijing, China
chaoying@ibcas.ac.cn

Specialty section:

This article was submitted to *Plant
Evolution and Development*, a section
of the journal *Frontiers in Plant
Science*

Received: 28 October 2014

Accepted: 27 March 2015

Published: 13 April 2015

Citation:

Wang L, Li J, Zhao J and He C (2015)
Evolutionary developmental genetics
of fruit morphological variation within
the Solanaceae.
Front. Plant Sci. 6:248.
doi: 10.3389/fpls.2015.00248

Morphological variations of fruits such as shape and size, and color are a result of adaptive evolution. The evolution of morphological novelties is particularly intriguing. An understanding of these evolutionary processes calls for the elucidation of the developmental and genetic mechanisms that result in particular fruit morphological characteristics, which determine seed dispersal. The genetic and developmental basis for fruit morphological variation was established at a microevolutionary time scale. Here, we summarize the progress on the evolutionary developmental genetics of fruit size, shape and color in the Solanaceae. Studies suggest that the recruitment of a pre-existing gene and subsequent modification of its interaction and regulatory networks are frequently involved in the evolution of morphological diversity. The basic mechanisms underlying changes in plant morphology are alterations in gene expression and/or gene function. We also deliberate on the future direction in evolutionary developmental genetics of fruit morphological variation such as fruit type. These studies will provide insights into plant developmental processes and will help to improve the productivity and fruit quality of crops.

Keywords: domestication, evolutionary developmental genetics, fruit, gene expression, morphological novelty, natural variation, Solanaceae

Introduction

Diversification of plant morphology occurred during evolution as a result of plant adaptation to changes in the environment. The origin of the fruit is an evolutionary adaptation that facilitates survival and distribution of progeny. For example, fruits protect the developing seeds from adverse environments and/or foraging by animals during premature stages, thus enhancing the survival rate. However, fruits that contain nutrients and minerals can become favorite foods for animals and humans as part of a balanced diet. The energetic cost of producing fruits are paid for through subsequent seed dispersal, e.g., birds, mammals, and humans disperse seeds to different habitats where they can propagate. In some cases, the origin of morphological novelties or particular structures associated with fruits play an essential role in seed dispersal by wind, water and animals. Diverse colors and flavors of mature fruits attract animals that eat the fruit and aid seed dispersal. Thus, the morphological variations of fruits have diversified considerably. Furthermore, humans have domesticated a wide range of plants as fruit crops with different sizes, shapes, colors, flavors, and textures.

The Solanaceae family has a rich diversity of fruit types and flower morphologies (Knapp, 2002; He et al., 2004). In addition, this family ranks as one of the most economically important

plant families among the angiosperms. Solanaceous fruits represent an important part of the human diet and common fruit crops in this family include tomato (*Solanum lycopersicum*), eggplant (*Solanum melongena*), and chili/pepper (*Capsicum* spp.). The fruits from some species of *Physalis* (such as *Physalis philadelphica* and *Physalis peruviana*) and *Lycium* (e.g., *Lycium barbarum* and *Lycium chinense*) have both curative and culinary usages. Moreover, the Solanaceae family contains many model species for the study of plant developmental processes, including tomato, potato (*Solanum tuberosum*), tobacco (*Nicotiana tabacum*), and *Petunia hybrida*. Thus, this plant family has served as a model for linking genomics and biodiversity (Knapp et al., 2004). The Solanaceous fruits exhibit considerable morphological diversity (Knapp, 2002), including size, shape, and color, both within and between different species (Figure 1). How do such morphological variations arise, and what are the underlying genetic bases? In recent years, modern molecular biology and genomic tools have been used extensively to elucidate the mechanisms underlying the evolution and development of these fruit morphological variations. In this review, we summarize the known genetic control of Solanaceous fruit morphological variations, highlight the general mechanisms involved in the evolution of plant morphology, and discuss the future direction.

Genetic Control of Fruit Size and Shape

Plant fruits exhibit considerable morphological diversity in size and shape. Fruit size and shape variation usually contribute to reproductive isolation of species and have clear evolutionary consequences in natural conditions. Moreover, fruit size is

a prime breeding target, and fruit shape is often altered following the size alteration, indicating that the two traits might share a common set of genetic controllers. Solanaceous crops display significant variation in fruit size and shape within and among populations (Figure 1). Thus, determination of the genetic basis of these fruit-associated trait variations is the most common type of application-oriented fundamental evolutionary study. Quantitative trait loci (QTLs) for variation of morphological traits between the Solanaceous crops and their closely related wild relatives are well-conserved (Doganlar et al., 2002; Ben Chaim et al., 2003; Frary et al., 2003; Zygier et al., 2005; Borovsky and Paran, 2011; Carvalho et al., 2014; Portis et al., 2014), but most of them have not yet been cloned. Multiple QTLs and/or genes regulating fruit size and shape are well-characterized in the Solanaceae (Table 1). The considerable progress in the genetic control of fruit size and shape in tomato was reviewed by van der Knaap et al. (2014). Therefore, in this section we briefly summarize the findings in tomato and focus on the new findings in other Solanaceous species. The identified “fruit morphological variations” QTLs/genes that encode regulators with diverse chemical attributes might form an interaction and regulatory network to control cell division activity/patterns or cell expansion. Therefore, any alteration in these regulators or their pathways may contribute to variations in fruit size and shape.

Regulators of Cell Division Activity or Patterns

The two characterized genes that regulate fruit weight are *Fruit weight 2.2* (*FW2.2*) and *Fruit weight 3.2* (*FW3.2*). *FW2.2* is the first cloned QTL in plants (Frary et al., 2000). The allele that increases fruit weight causes an enlargement of the placenta and columella regions of the fruit, which control ~30% fruit size in tomato (Nesbitt and Tanksley, 2001; Cong et al., 2002). A mutation in the *FW2.2* promoter leads to heterochronic expression of the gene during fruit development, resulting in differences in fruit size between cultivated tomato and its wild relatives. *FW2.2* is a plasma membrane-anchored protein that is involved in the cell cycle pathway for the control of ovary size (Liu et al., 2003a). *FW3.2* encodes a cytochrome P450 homolog, i.e., the putative ortholog of *Arabidopsis* *KLUH* (Chakrabarti et al., 2013) and is therefore designated as *S. lycopersicum* *KLUH* (*SIKLUH*). A mutation located 512 bp upstream of the predicted start of *SIKLUH* transcription is responsible for a change in tomato fruit weight. The increase in fruit weight of *FW3.2* is primarily due to an increase in cell number in the pericarp and septum areas. The putative ortholog of *KLUH* in pepper is also associated with larger fruit suggesting a possible role of the cytochrome P450 family in parallel domestication processes in fruit and vegetable crops (Chakrabarti et al., 2013). The functional conservation of *FW3.2* in angiosperms and the underlying mechanisms require further investigation, whereas the role of *FW2.2* in organ size and cell division is highly conserved in most plant species examined. *FW2.2* was found to correspond to a major fruit weight QTL in eggplants (Doganlar et al., 2002). However, *FW2.2* does not play a significant role in controlling fruit size variations between wild and cultivated peppers because pepper fruit has little placental



FIGURE 1 | The diverse variations of fruit morphology in the Solanaceae family. (1–3), *Solanum melongena*; (4), *Solanum pimpinellifolium*; (5–8), *Solanum lycopersicum*; (9–14), Variants of *Capsicum annuum*; (15), *Physalis alkekengi*; (16), *Physalis floridana*; (17–19), *Physalis philadelphica*. The Chinese lantern in *Physalis* spp. was opened to show the berry inside. Bar = 1 cm.

TABLE 1 | QTLs/Genes characterized for variation in fruit size and shape in the Solanaceae.

QTL/gene	Allelic variation	Protein	Process affected	Species	Reference
<i>fw2.2</i>	Promoter-Regulatory	A cell number regulator (CNR) family protein	Cell division/fruit size	Tomato eggplant <i>Physalis</i>	Frary et al. (2000), Cong et al. (2002), Doganlar et al. (2002), Li and He (2015)
<i>fw3.2</i>	Promoter-regulatory	A cytochrome P450 protein	Cell division/fruit size	Tomato pepper	Chakrabarti et al. (2013)
<i>ovate</i>	Premature stop	Ovate family proteins	Cell division/fruit shape	Tomato eggplant pepper	Liu et al. (2002), Spinner et al. (2010, 2013), Tsaballa et al. (2011), Drevensek et al. (2012), Gramazio et al. (2014)
<i>sun</i>	Transposon insertion-regulatory	A member of the IQD family of calmodulin-binding proteins	Cell division/fruit shape	Tomato eggplant	Xiao et al. (2008), Jiang et al. (2009), Wu et al. (2011), Gramazio et al. (2014)
<i>fas</i>	Intron -regulatory	A YABBY-like transcription factor	Cell division/locule number/shape and size	Tomato	Cong et al. (2008)
<i>lc</i>	SNPs in downstream-regulatory	A putative ortholog of WUSCHEL	Cell division/locule number/shape and size	Tomato	Munos et al. (2011)
<i>POS1</i>	Intron-regulatory	A transcription factors with two CRF-AP2 domains	Cell expansion/fruit size	<i>Physalis</i>	Wang et al. (2012, 2014)

tissue (Zygier et al., 2005). *FW2.2*-like genes have been renamed as the *Cell Number Regulator (CNR)* family (Dahan et al., 2010; Guo et al., 2010; Libault et al., 2010; Guo and Simmons, 2011; De Franceschi et al., 2013; Xu et al., 2013; Monforte et al., 2014). CNR family members are localized to the membrane to facilitate the transport of ions (Song et al., 2004; Nakagawa et al., 2007), but the mechanism of regulation of ion transport leading to changes in cell division is unknown. Recently, Li and He (2015) found that *Physalis floridana Cell Number Regulator 1 (PfcNR1)* encodes a putative ortholog of *FW2.2*. The heterochronic expression levels of *PfcNR1* alleles in ovaries are negatively correlated with cell division activity and berry size variation between different *Physalis* species. *PfcNR1* was found to interact with *PfAG2*, an AGAMOUS (*AG*) homolog for ovary identity determination (Yanofsky et al., 1990). Moreover, *PfAG2* binds to the *CaRG-box* in the *PfCYCD2;1* promoter to repress the expression of this gene. The work in *Physalis* suggests a novel mechanism mediated by an MADS-domain protein for a cell membrane-localized protein to control cell division suggesting a molecular link between ovary identity and growth in plants (Li and He, 2015).

Fruit elongation is an important feature that affects fruit shape. Elongation in the tomato fruit is controlled mainly by *OVATE* and *SUN*. *OVATE* encodes a member of the ovate family proteins (OFPs), and a mutation that results in a premature stop codon leads to the pear-shaped fruit in tomato (Liu et al., 2002). The *Arabidopsis* OFP members act as transcriptional repressors in controlling cell elongation, plant growth, and development (Wang et al., 2007, 2011). Yeast two-hybrid screens using the tomato *OVATE* as bait identified the TONNEAU1-recruiting motif (TRM) superfamily as prey. TONNEAUs (TON) and TON-TRM interaction play critical roles in preprophase band formation and microtubule array organization of plant cell division and cell elongation (Spinner et al., 2010, 2013; Drevensek et al., 2012). Thus, an interaction between *OVATE* and TRMs may provide a mechanistic link between fruit patterning and growth, nonetheless, this assumption needs substantiation.

OFPs are present in all major lineages of land plants (Liu et al., 2014); whether they shared a conserved role needs to be investigated. At least *Ovate*-like genes from pepper and eggplants are also involved in determining fruit shape (Tsaballa et al., 2011; Gramazio et al., 2014). *SUN* encodes a member of calmodulin-binding proteins (Xiao et al., 2008, 2009) and regulates vegetative growth and reproductive organ shape by changing cell division patterns (Wu et al., 2011). Wild-type *SUN* is only expressed 10 days post-anthesis fruit (van der Knaap et al., 2014); however, a transposition of unusual 24.7 kb duplication event mediated by the retrotransposon *Rider* causes mutations in some tomato cultivars (Jiang et al., 2009). This leads to greater expression in the entire floral and fruit development, and elongated fruit (Xiao et al., 2008, 2009). How *SUN* regulates cell division pattern remains unclear, but *SUN* ortholog also controls the fruit shape in eggplant (Gramazio et al., 2014) implicating a conserved developmental role of this gene family.

Alteration in the locule number frequently affects both fruit shape and size. For example, the wild species *Solanum pimpinellifolium* commonly contain two to four locules while tomato cultivars have more; and in extreme cases, more than eight locules have been observed (Munos et al., 2011). Most phenotypic variation due to locule number variation is explained by *fasciated (fas)* and *locule number (lc)*. *FAS* encodes a YABBY-like transcription factor *SIYABBY2* (Cong et al., 2008). The mutation *fas*, which resulted from a 294-kb inversion with one of the breakpoints in the first intron of *SIYABBY2*, led to the increases in locule number, and was a critical step in the production of extreme fruit size during tomato domestication (Cong et al., 2008). However, the details of how *SIYABBY2* impacts locule number in tomato are not well-understood. *LC* was identified to be associated with two single nucleotide polymorphisms (SNPs) located 1080 bp downstream of the putative tomato ortholog of *WUSCHEL (WUS)*, a homeodomain transcription factor (Clark, 2001; Munos et al., 2011). *LC* controls the number of carpel primordia and a mutation results in a fruit with more than the typical two to three locules.

Since increased expression of *AtWUS* leads to increased floral organ number in *Arabidopsis* (Clark, 2001), *SIWUS* is the most likely candidate to underlie *lc*. *AtWUS* positively regulates *AtAG* while *AtAG* down-regulates *AtWUS*; the down-regulation is mediated by two downstream CARG *cis*-regulatory elements bound by *AtAG* (Lenhard et al., 2001; Lohmann et al., 2001; Liu et al., 2011). In tomato, the two SNPs associated with *lc* are located in a putative CARG *cis*-regulatory element, but surprisingly, a considerable change in the expression of *SIWUS* compared with the wild type was not observed (Munos et al., 2011). More evidence is needed to verify the role of *SIWUS* in the control of fruit size, or to link *lc* and *SIWUS*.

Cell Expansion Regulators

The above-characterized genetic regulators mainly affect cell division activity or patterns; however, alteration in cell expansion also plays a role in the evolution of fruit size. Pericarp size, particularly pericarp thickness, is a strong determinant of *Solanaceous* fruit size. Pericarp thickness appears to be governed by endoreduplication (Cheniclet et al., 2005). Endoreduplication – arrest in mitotic activity accompanied by a concomitant increase in nuclear DNA levels during fruit development – is believed to drive cell expansion, and is mainly regulated by cell cycle genes (Chevalier et al., 2011). During tomato fruit development, endoreduplication acts as an important morphogenetic factor supporting cell growth and multiple physiological functions (Chevalier et al., 2014). Impairment in the expression of *WEE1*, which encodes the cell cycle-associated protein kinase in transgenic tomato plants, results in a reduction in plant and fruit size, because of decrease in cell size that correlates with a decrease in the DNA ploidy levels (Gonzalez et al., 2007). Downregulation of tomato *CELL CYCLE SWITCH A 52 kDa (SICCS52A)* does not affect the number of pericarp cell layers, but results in the formation of significantly smaller fruit, along with a sharp reduction in the ploidy level and pericarp cell size (Mathieu-Rivet et al., 2010a,b). The auxin *Sl-IAA17* transcriptional repressor also controls tomato fruit size by regulating endoreduplication-related cell expansion (Su et al., 2014). The role of endoreduplication in increased cell expansion in fruit development is controversial (Chevalier et al., 2011; Nafati et al., 2011), and its role in natural variation of fruit size is not known. Recently, a key cell expansion regulator was characterized in *P. philadelphica* (tomatillo). The characterized gene is *Physalis Organ Size 1 (POS1)*, previously designated as *Pp30*, which encodes a putative transcription factor with two CRF (cytokinin response factor)-AP2 (APETALA2) domains, and positively controls floral and fruit organ sizes in tomatillos (Wang et al., 2012, 2014). The expression levels of the *POS1* gene were positively associated with size variation in tomatillo reproductive organs such flowers, berries and seeds. *POS1* knockdown resulted in smaller flowers and berries with smaller cells compared with their wild type counterparts. Conversely, *POS1* overexpression promoted organ size without increasing the cell number. The first introns of the *POS1* alleles from large, intermediate and small tomatillo groups contained one, two and three 37-bp repeats,

respectively. Furthermore, copy variation of repeats in the first intron of *POS1* alleles resulted in differential expression of this gene. Thus, the novel regulatory variation in *POS1* regulates reproductive organ size variation in tomatillos (Wang et al., 2014).

Genetic Basis of Fruit Color Variation

Fruit color is essential for attracting animals and humans, and thus, facilitates seed dispersal. Color is determined by different proportion of surface pigments, such as carotenoids, chlorophyll, flavonoids, and anthocyanins (Liu et al., 2003b; Nashilevitz et al., 2010; Kachanovsky et al., 2012). The color of berries varies widely and can be red, purple, orange, yellow, or green (**Figure 1**). Brightly colored berries generally tend to be juicy and extremely soft, whereas, mature green berries are harder and have a woody texture (Symon, 1987). Phylogenetic reconstructions suggest that green fruits belong to the primitive clade, whereas brightly colored (red, orange, yellow) species are derived clades (Peralta and Spooner, 2001). Several genes were characterized in tomato, pepper, and eggplant. Carotenoid content is the primary determinant of fruit color that affects nutritional value and appearance. In the carotenoid pathway, color diversity depends on the quantity of pigment produced, and the point where the pathway is arrested. Many transcription factors participate in controlling this pathway. Rodriguez-Uribe et al. (2012) determined the carotenoid composition in a number of orange-colored pepper fruit, and compared it with transcript abundance for the carotenogenic enzymes, such as phytoene synthase (*Psy*), lycopene β -cyclase (*LcyB*), β -carotene hydroxylase (*CrtZ*), and capsanthin-capsorubin synthase (*Ccs*). A splicing mutation in the *Psy* gene 1 (*Psy1*) causes orange coloration in Habanero pepper fruits (Kim et al., 2010). A chimeric transcript containing *Psy1* and a potential mRNA is associated with *yellow flesh* color in tomato accession PI114490 (Kang et al., 2014). The single dominant tomato *LcyB* gene increases β -carotene in the fruit while *old-gold (og)*, a recessive mutation of the *LcyB* abolishes β -carotene and increases lycopene (Ronen et al., 2000). *LcyB* is homologous to *Ccs*, an enzyme that produces red xanthophylls in pepper fruits (Ronen et al., 2000). A tandem repeat structure in the promoter region of *Ccs* causes the yellow fruit color in pepper (Li et al., 2013). *CrtZ* mutant results in accumulation of β -carotene and conversion of red to orange color in pepper fruit (Borovsky et al., 2013). Nowadays, many QTLs/genes were found to be involved in fruit coloration through affecting plastid characteristics. QTL *pc8.1*, affects carotenoid content in pepper fruit and is associated with variation in plastid compartment size (Brand et al., 2012). The variations in chromoplasts are associated with carotenoid compositional differences and fruit color of different pepper cultivars (Kilcrease et al., 2013). An *Arabidopsis pseudo response regulator 2-like (APRR2-like)* gene is linked to pigment accumulation in tomato and pepper fruits. Overexpressing this gene in tomato increased plastid number, area, and pigment content; thus, enhancing the levels of chlorophyll in immature unripe fruits and carotenoids in red ripe fruits (Pan et al.,

2013). The positions of ten genes in the carotenoid biosynthetic pathway of pepper were homologous with the positions of the same genes in tomato (Thorup et al., 2000). Amino acid substitutions in homologs of the STAY-GREEN protein of rice are responsible for green-flesh and chlorophyll retainer mutations of tomato and pepper (Barry et al., 2008). *CaGLK2*, a GOLDEN2-like transcription factor regulates natural variation of chlorophyll content and fruit color in pepper fruit (Brand et al., 2014). Virus-induced gene silencing (VIGS) of *SLMYB12* resulted in a decrease in the accumulation of naringenin chalcone, and pink-colored tomato fruit, suggesting an important role for this gene in regulating the flavonoid pathway in tomato fruit (Ballester et al., 2010). Major anthocyanin in eggplant peel was delphinidin-3-rutinoside while the predominant pigment in violet pepper was delphinidin-3-*trans*-coumaroylrutinoside-5-glucoside (Sadilova et al., 2006). It is possible that a conserved complex regulatory pathway controls Solanaceous fruit colors, but the complete genetic components in the carotenoid regulatory pathway have not yet been revealed, even in a Solanaceous species.

The Evolution of the Fruit Morphological Novelty

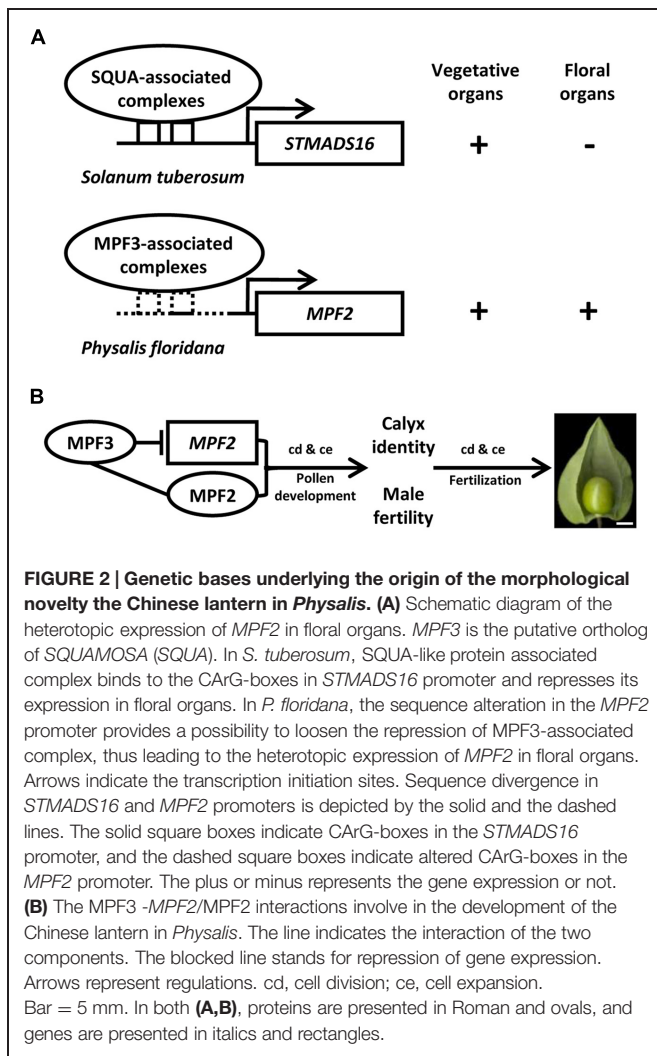
The origin of morphological novelties is a long-standing dispute in evolutionary biology. An understanding of this process demands the elucidation of the developmental and genetic mechanisms that produce such structures. Unlike *Solanum* and *Capsicum* species, *Physalis* has distinguished fruit morphology with a papery husk as the accessory trait of fruits (Whitson and Manos, 2005). The distinct trait of *Physalis* species is termed the Chinese lantern or the inflated calyx syndrome (ICS) since it is a derivative of the calyx (He and Saedler, 2005). Within the Solanaceae, only five genera (*Physalis*, *Withania*, *Przewalskia*, *Margaranthus*, and *Nicandra*) feature this morphological novelty. The nature of the Chinese lantern is an inflated fruiting calyx, and fertilization/hormonal signals trigger the formation of ICS in *Physalis* and *Withania* (He and Saedler, 2005, 2007; Khan et al., 2012). A series of microevolutionary time scale studies revealed that the origin of the Chinese lantern is associated with the heterotopic expression of the *Physalis* MADS-box gene 2 (*MPF2*) in floral organs. Moreover, its identity is determined by another *Physalis* MADS-box gene 3 (*MPF3*; He and Saedler, 2005; Zhao et al., 2013). Unlike its ortholog of *S. tuberosum* MADS-box gene 16 (*STMADS16*), *MPF2* is heterotopically expressed in the floral organs of *Physalis* (Figure 2A). The heterotopic expression of *MPF2* may result from the variation in the CArG-boxes in its promoter. The phenotypic variation of *MPF2* knockdowns further supports the role of *MPF2* in male fertility and fruiting calyx growth (He and Saedler, 2005). Thus, heterotopic expression of *MPF2* is the key to the origin of the Chinese lantern morphology. While *MPF3* is specifically expressed in floral tissues, this gene encodes a euAP1 MADS-domain protein, which is primarily localized to the nucleus, and it interacts with *MPF2* and some floral MADS-domain proteins to selectively bind the variants of CArG-boxes in the *MPF2* promoter (Figure 2A, Zhao

et al., 2013). Besides the role in calyx identity, *MPF3* regulates ICS formation and male fertility through interactions with the *MPF2* gene or *MPF2* protein (Figure 2B, Zhao et al., 2013). The ICS-determined genes also function in male fertility; either in pollen maturation or yields, and their encoding proteins also interact with floral MADS-proteins for stamen development (He et al., 2007). *MPF3* downregulation increase *MPF2* expression significantly in the calyces and androecium; however, the expression of *MPF3* is not affected in *MPF2*-downregulated flowers (Zhao et al., 2013). Therefore, the novel role of the *MPF3*-*MPF2* regulatory circuit in male fertility is integral to the origin of the Chinese lantern. Thus, any molecular interactions associated with *MPF2* and *MPF3* may contribute to ICS formation (He et al., 2007; Zhao et al., 2013). Dissecting the *double-layered-lantern mutant1* (*doll1*), a *P. floridana* *GLOBOSA* (*GLO*)-like MADS-box gene 1 (*PFGLO1*) genomic locus deletion mutant (Zhang et al., 2014a) further suggested a role of male fertility in the development of the Chinese lantern in *Physalis*. The corolla and androecium of *doll1* are respectively transformed into the calyces and gynoecium (Zhang et al., 2014a). On the other hand, downregulating *PFGLO2*, the paralog of *PFGLO1* impaired male fertility (Zhang et al., 2015). Further evolutionary analyses suggest that the evolution of ICS in Solanaceae is associated mainly with divergence related to *MPF2*-like genes, and alteration in *MPF2*-related molecular traits plays a crucial role (Hu and Saedler, 2007; Khan et al., 2009; Zhang et al., 2012).

Future Research Highlights

The Evolution of Fruit Type in Solanaceae

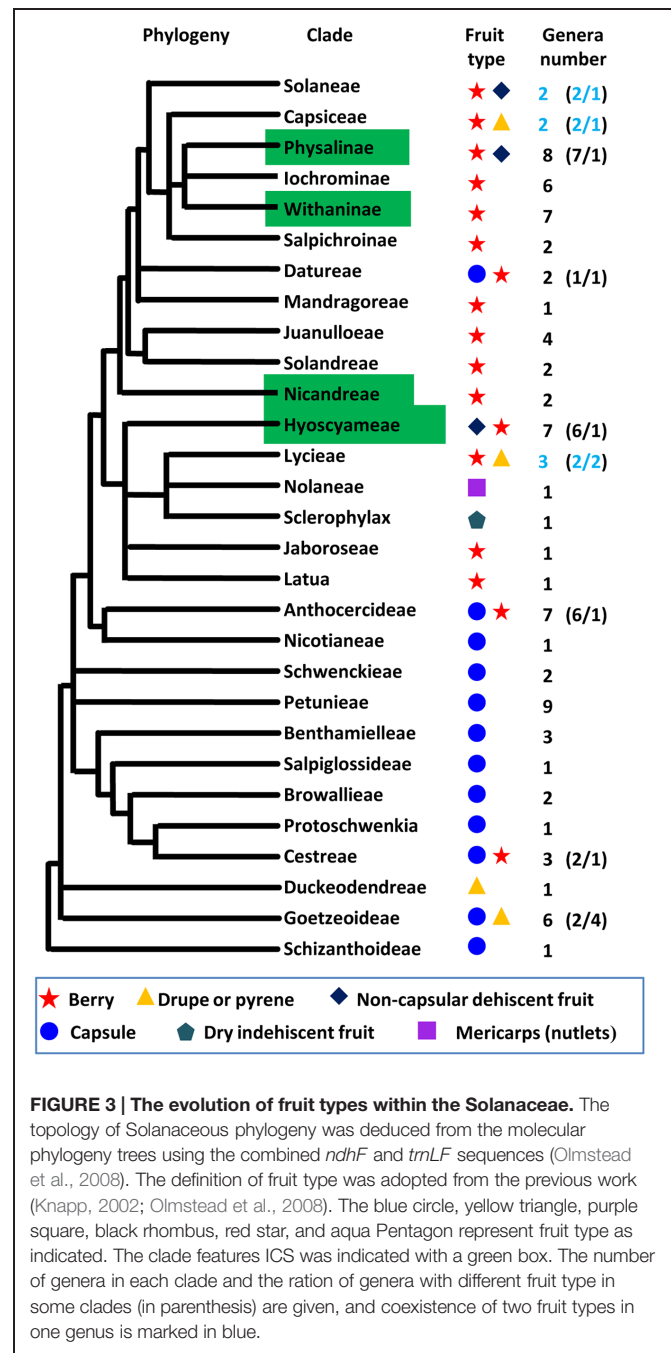
Fruit is the vehicle for seed dispersal, and the origin of the fruit is an evolutionary adaptation that facilitates survival and distribution of progeny. Thus, the evolution of fruit morphology is under strong selective pressures. Fruit size and shape are mostly related to domesticated crops; however, fruit type is a key adaptive feature to terrestrial habitats in natural conditions. Therefore, revealing the genetic basis of the alteration of fruit types should be a theme of future evolutionary research. Berry (fleshy fruit), capsule, drupe, dry indehiscent fruit, non-capsular dehiscent fruit, and mericarp are the six known types of Solanaceous fruits (Knapp, 2002; Olmstead et al., 2008). We mapped the six fruit types on the phylogenetic tree of the family Solanaceae (Figure 3). Berry and capsule are apparently predominant types of fruits. Capsules occur in the most basal clades and broadly distribute in basal taxa while the origin of berry happened in Cestreae but became predominant after the origin of Anthocercideae. Berry covered by ICS seems to have multiple independent origins in Physalinae, Withaninae, Nicandreae, and Hyoscyameae. Non-capsular dehiscent fruit occurs independently in Solanaceae, Physalinae and Hyoscyameae. Drupe and pyrene occur at least twice in Duceodendreae, Goetzeoideae, and Lycieae. Dry indehiscent fruit is only observed in Sclerophylax. The genetic control of fruit type is not well-studied, and as the research is hampered by large evolutionary and genetic distance among plants with different fruit types. However, the evolutionary genetic control



regarding the transition between the various fruit types will be an extremely interesting target. Thus, coexistence of two fruit types in some Solanaceous clades, particularly in a genus from each clade of Solanaceae, Capsiceae, and Lychieae (Figure 3) provides a good system for comparison to understand the genetic variation causing such morphological divergence.

Natural Variation and Domestication

Natural variation of a trait, even the maintenance of a morphological novelty, is a consequence of adaptation to natural environments. The Solanaceae family displays considerable diversities at different levels and is therefore proposed as a good model to study the evolutionary mechanisms of biodiversity (Knapp et al., 2004). Several model plant species have been established in laboratory experiments, such as tomato, and this will facilitate the work in this family. However, diversity and natural variation are poorly evaluated within the phylogenetic context, and, therefore, the evolutionary mechanisms are not well-understood. In particular, the origin of morphological novelties and the evolution of fruit type (Figure 3) have long been overlooked. Besides the Chinese lantern, other novel morphological traits need to be identified.



In addition, the Solanaceae family contains fleshy fruits and vegetables such as tomato, eggplant, chili/pepper, and tomatillo that are eaten by humans, thus several species are domesticated crops and are bred for their diverse morphologies (Figure 1). How human selection affects the genomes of these species, compared with their closely related wild relatives and plants with other fruit types, and further creates ideal traits to meet people's demands is not well-known. Understanding the processes of how plants respond to alteration of natural and/or human environments are the most fundamental to understand the process of life and should, therefore, be a high priority for research.

Enhancing the Work in the New Model *Physalis*

The fruit morphology in *Physalis* varies significantly (**Figure 1**). This genus displays the post-floral morphological novelty Chinese lantern, and the color, flavor, and size of the berries show an impressive variability. A few *Physalis* species, such as *P. peruviana*, *P. philadelphica*, *P. alkekengi*, and *P. angulata* are becoming new leading Solanaceous horticultural and medicinal crops. With efforts in our group in recent years, evolutionary developmental genetics of *Physalis* fruits (berry and ICS) are now understood. In particular, many molecular research tools have been established in *Physalis*, including gene isolation, gene expression detection, protein-protein interactions, transformation system, and VIGS approach (He and Saedler, 2005; He et al., 2007; Zhao et al., 2013; Wang et al., 2014; Zhang et al., 2014a,b; Li and He, 2015). In this respect, *Physalis* has, therefore, been established as an emerging model plant for development, evolution and ecology. The genetic repertoire for berry and ICS development via genetic and genomic tools needs further investigation. Moreover, multiple experimental approaches will help understand the selective values of the Chinese lantern, and the evolutionary mechanisms of variations in berry size, color, and medicinal components of *Physalis*.

Instead of domesticated crops, more wild plants have to be included. Comparative analyses of Solanaceous crops and their wild relatives will bring new insights into growth, development, and evolution. Thus, comparative microevolutionary-scale studies between closely related genera/species at different levels, including the development, the cellular process, and genetic variation in a phylogenetic context, are major themes in evolutionary developmental genetics of fruit morphological variation.

Conclusion

The evolution of morphological variation is a consequence of adaptive evolution. Advances in genetics and genomics provide genetic and molecular tools that have facilitated the map-based and candidate-gene-based cloning of several key genes in fruit development, creating new inroads into understanding the primary regulatory mechanisms underlying fruit morphological variation. Recruitment of a preexisting (regulatory) gene frequently occurs. The recruiting mechanisms include alteration

of gene expression and/or gene function through mutations in the regulatory and/or coding regions. The regulatory motifs are often demonstrated to be located in the promoter or the intron, and altering them may cause heterotopic (alteration of expression place), heterochronic (change of expression time), ectopic (a high expression level), or downregulated expression of a gene that appears to play a predominant role in the evolution of plant morphology. Species-specific evolution cannot be excluded; however, independently recruiting the same genetic variation, and regulatory networks could to some extent explain the multiple origins of a particular trait state. In addition, multiple losses of a trait state may occur because once the interacting and regulatory networks have been established for a trait, the evolutionary pattern of that trait may be determined by any secondary mutation in the trait biosynthetic pathways.

In the coming years, there will be considerable focus on isolating new developmental genes and bridging the gap between these genes and their functions. Understanding their recruiting mechanisms and interactions with environments to determine fruit morphological variation in a phylogenetic context are key scientific questions in evolutionary developmental biology. Translation of the information from a few model plants to the large portion of remaining non-model species should be improved. These results will provide fundamental insights into plant developmental processes as well as help to establish novel strategies to improve the productivity and fruit quality of crops.

Author Contributions

CH designed the work; LW constructed **Figure 1** and **Table 1**; JZ drew **Figure 2**; JL and LW compiled the **Figure 3**; WL and CH wrote the manuscript; JZ and JL contributed critically to the editing the manuscript, and approved the manuscript.

Acknowledgments

As we noticed during preparation of this review paper, a large number of related references are available. However, we were not able to include all of them. We, therefore, apologize to these colleagues. We thank all colleagues who work in this field. This work was supported by grants (91331103 and 31100169) from the National Natural Science Foundation of China.

References

- Ballester, A. R., Molthoff, J., de Vos, R., Hekkert, B. L., Orzaez, D., Fernández-Moreno, J. P., et al. (2010). Biochemical and molecular analysis of pink tomatoes: deregulated expression of the gene encoding transcription factor SIMYB12 leads to pink tomato fruit color. *Plant Physiol.* 152, 71–84. doi: 10.1104/pp.109.147322
- Barry, C. S., McQuinn, R. P., Chung, M. Y., Besuden, A., and Giovannoni, J. J. (2008). Amino acid substitutions in homologs of the STAY-GREEN protein are responsible for the green-flesh and chlorophyll retainer mutations of tomato and pepper. *Plant Physiol.* 147, 179–187. doi: 10.1104/pp.108.118430
- Ben Chaim, A., Borovsky, Y., Rao, G. U., Tanyolac, B., and Paran, I. (2003). fs3.1: a major fruit shape QTL conserved in *Capsicum*. *Genome* 46, 1–9. doi: 10.1139/g02-096
- Borovsky, Y., and Paran, I. (2011). Characterization of fs10.1, a major QTL controlling fruit elongation in *Capsicum*. *Theor. Appl. Genet.* 123, 657–665. doi: 10.1007/s00122-011-1615-7
- Borovsky, Y., Tadmor, Y., Bar, E., Meir, A., Lewinsohn, E., and Paran, I. (2013). Induced mutation in β -CAROTENE HYDROXYLASE results in accumulation of β -carotene and conversion of red to orange color in pepper fruit. *Theor. Appl. Genet.* 126, 557–565. doi: 10.1007/s00122-012-2001-9
- Brand, A., Borovsky, Y., Hill, T., Rahman, K. A., Bellalou, A., Van Deynze, A., et al. (2014). CaGLK2 regulates natural variation of chlorophyll content and fruit

- color in pepper fruit. *Theor. Appl. Genet.* 127, 2139–2148. doi: 10.1007/s00122-014-2367-y
- Brand, A., Borovsky, Y., Meir, S., Rogachev, I., Aharoni, A., and Paran, I. (2012). pc8.1, a major QTL for pigment content in pepper fruit, is associated with variation in plastid compartment size. *Planta* 235, 579–588. doi: 10.1007/s00425-011-1530-9
- Carvalho, S. I., Ragassi, C. F., Bianchetti, L. B., Reifschneider, F. J., Buso, G. S., and Faleiro, F. G. (2014). Morphological and genetic relationships between wild and domesticated forms of peppers (*Capsicum frutescens* L. and *C. chinense* Jacquin). *Genet. Mol. Res.* 12, 7447–7464. doi: 10.4238/2014.September.12.11
- Chakrabarti, M., Zhang, N., Sauvage, C., Munos, S., Blanca, J., and Canizares, J. (2013). A cytochrome P450 regulates a domestication trait in cultivated tomato. *Proc. Natl. Acad. Sci. U.S.A.* 110, 17125–17130. doi: 10.1073/pnas.1307313110
- Cheniclet, C., Rong, W. Y., Causse, M., Frangne, N., Bolling, L., Carde, J. P., et al. (2005). Cell expansion and endoreduplication show a large genetic variability in pericarp and contribute strongly to tomato fruit growth. *Plant Physiol.* 139, 1984–1994. doi: 10.1104/pp.105.068767
- Chevalier, C., Bourdon, M., Pirrello, J., Cheniclet, C., Gévaudant, F., and Frangne, N. (2014). Endoreduplication and fruit growth in tomato: evidence in favour of the karyoplasmic ratio theory. *J. Exp. Bot.* 65, 2731–2746. doi: 10.1093/jxb/ert366
- Chevalier, C., Nafati, M., Mathieu-Rivet, E., Bourdon, M., Frangne, N., Cheniclet, C., et al. (2011). Elucidating the functional role of endoreduplication in tomato fruit development. *Ann. Bot.* 107, 1159–1169. doi: 10.1093/aob/mcq257
- Clark, S. E. (2001). Cell signaling at the shoot meristem. *Nat. Rev. Mol. Cell Biol.* 2, 276–284. doi: 10.1038/35067079
- Cong, B., Barrero, L. S., and Tanksley, S. D. (2008). Regulatory change in YABBY-like transcription factor led to evolution of extreme fruit size during tomato domestication. *Nat. Genet.* 40, 800–804. doi: 10.1038/ng.144
- Cong, B., Liu, J., and Tanksley, S. D. (2002). Natural alleles at a tomato fruit size quantitative trait locus differ by heterochronic regulatory mutations. *Proc. Natl. Acad. Sci. U.S.A.* 99, 13606–13611. doi: 10.1073/pnas.172520999
- Dahan, Y., Rosenfeld, R., Zadiranov, V., and Irihimovitch, V. (2010). A proposed conserved role for an avocado fw2.2-like gene as a negative regulator of fruit cell division. *Planta* 232, 663–676. doi: 10.1007/s00425-010-1200-3
- De Franceschi, P., Stegmeir, T., Cabrera, A., van der Knaap, E., Rosyara, U. R., Sebolt, A. M., et al. (2013). Cell number regulator genes in *Prunus* provide candidate genes for the control of fruit size in sweet and sour cherry. *Mol. Breed.* 32, 311–326. doi: 10.1007/s11032-013-9872-6
- Doganlar, S., Frary, A., Daunay, M. C., Lester, R. N., and Tanksley, S. D. (2002). Conservation of gene function in the Solanaceae as revealed by comparative mapping of domestication traits in eggplant. *Genetics* 161, 1713–1726.
- Drevensek, S., Goussot, M., Duroc, Y., Christodoulidou, A., Steyaert, S., and Schaefer, E. (2012). The *Arabidopsis* TRM1-TON1 interaction reveals a recruitment network common to plant cortical microtubule arrays and eukaryotic centrosomes. *Plant Cell* 24, 178–191. doi: 10.1105/tpc.111.089748
- Frary, A., Doganlar, S., Daunay, M. C., and Tanksley, S. D. (2003). QTL analysis of morphological traits in eggplant and implications for conservation of gene function during evolution of solanaceous species. *Theor. Appl. Genet.* 107, 359–370. doi: 10.1007/s00122-003-1257-5
- Frary, A., Nesbitt, T. C., Grandillo, S., van der Knaap, E., Cong, B., Liu, J., et al. (2000). fw2.2: a quantitative trait locus key to the evolution of tomato fruit size. *Science* 289, 85–88. doi: 10.1126/science.289.5476.85
- Gonzalez, N., Gévaudant, F., Hernould, M., Chevalier, C., and Mouras, A. (2007). The cell cycle-associated protein kinase WEE1 regulates cell size in relation to endoreduplication in developing tomato fruit. *Plant J.* 51, 642–655. doi: 10.1111/j.1365-313X.2007.03167.x
- Gramazio, P., Prohens, J., Plazas, M., Andújar, I., Herraiz, F., Castillo, E., et al. (2014). Location of chlorogenic acid biosynthesis pathway and polyphenol oxidase genes in a new interspecific anchored linkage map of eggplant. *BMC Plant Biol.* 14:350. doi: 10.1186/s12870-014-0350-z
- Guo, M., Rupe, M. A., Dieter, J. A., Zou, J., Spielbauer, D., Duncan, K. E., et al. (2010). Cell number regulator 1 affects plant and organ size in maize: implications for crop yield enhancement and heterosis. *Plant Cell* 22, 1057–1073. doi: 10.1105/tpc.109.073676
- Guo, M., and Simmons, C. R. (2011). Cell number counts – the fw2.2 and CNR genes and implications for controlling plant fruit and organ size. *Plant Sci.* 181, 1–7. doi: 10.1016/j.plantsci.2011.03.010
- He, C. Y., Münster, T., and Saedler, H. (2004). On the origin of floral morphological novelties. *FEBS Lett.* 567, 147–151. doi: 10.1016/j.febslet.2004.02.090
- He, C. Y., and Saedler, H. (2005). Heterotopic expression of MPF2 is the key to the evolution of the Chinese lantern of *Physalis*, a morphological novelty in Solanaceae. *Proc. Natl. Acad. Sci. U.S.A.* 102, 5779–5784. doi: 10.1073/pnas.0501877102
- He, C. Y., and Saedler, H. (2007). Hormonal control of the inflated calyx syndrome, a morphological novelty, in *Physalis*. *Plant J.* 49, 935–946. doi: 10.1111/j.1365-313X.2006.03008.x
- He, C. Y., Sommer, H., Grosardt, B., Huijser, P., and Saedler, H. (2007). PFMAGO, a MAGO NASHI-like factor, interacts with the MADS-domain protein MPF2 from *Physalis floridana*. *Mol. Biol. Evol.* 24, 1229–1241. doi: 10.1093/molbev/msm041
- Hu, J., and Saedler, H. (2007). Evolution of the inflated calyx syndrome in Solanaceae. *Mol. Biol. Evol.* 24, 2443–2453. doi: 10.1093/molbev/msm177
- Jiang, N., Gao, D., Xiao, H., and van der Knaap, E. (2009). Genome organization of the tomato sun locus and characterization of the unusual retrotransposon rider. *Plant J.* 60, 181–193. doi: 10.1111/j.1365-313X.2009.03946.x
- Kachanovsky, D. E., Fille, S., Isaacson, T., and Hirschberg, J. (2012). Epistasis in tomato color mutations involves regulation of phytoene synthase 1 expression by cis-carotenoids. *Proc. Natl. Acad. Sci. U.S.A.* 109, 19021–19026. doi: 10.1073/pnas.1214808109
- Kang, B., Gu, Q., Tian, P., Xiao, L., Cao, H., and Yang, W. (2014). A chimeric transcript containing Psy1 and a potential mRNA is associated with yellow flesh color in tomato accession PI 114490. *Planta* 240, 1011–1021. doi: 10.1007/s00425-014-2052-z
- Khan, M. R., Hu, J., and He, C. Y. (2012). Plant hormones including ethylene are recruited in calyx inflation in Solanaceous plants. *J. Plant Physiol.* 169, 940–948. doi: 10.1016/j.jplph.2012.02.015
- Khan, M. R., Hu, J., Riss, S., He, C. Y., and Saedler, H. (2009). MPF2-like-A MADS-box genes control the inflated calyx syndrome in *Withania* (Solanaceae): roles of Darwinian selection. *Mol. Biol. Evol.* 26, 2463–2473. doi: 10.1093/molbev/msp159
- Kilcrease, J., Collins, A. M., Richins, R. D., Timlin, J. A., and O'Connell, M. A. (2013). Multiple microscopic approaches demonstrate linkage between chromoplast architecture and carotenoid composition in diverse *Capsicum annuum* fruit. *Plant J.* 76, 1074–1083. doi: 10.1111/tpj.12351
- Kim, O. R., Cho, M. C., Kim, B. D., and Huh, J. H. (2010). A splicing mutation in the gene encoding phytoene synthase causes orange coloration in Habanero pepper fruits. *Mol. Cells* 30, 569–574. doi: 10.1007/s10059-010-0154-4
- Knapp, S. (2002). Tobacco to tomatoes: a phylogenetic perspective on fruit diversity in the Solanaceae. *J. Exp. Bot.* 53, 2001–2022. doi: 10.1093/jxb/erf068
- Knapp, S., Bohs, L., Nee, M., and Spooner, D. M. (2004). Solanaceae – a model for linking genomics with biodiversity. *Comp. Funct. Genom.* 5, 285–291. doi: 10.1002/cfg.393
- Lenhard, M., Bohnert, A., Jurgens, G., and Laux, T. (2001). Termination of stem cell maintenance in *Arabidopsis* floral meristems by interactions between WUSCHEL and AGAMOUS. *Cell* 105, 805–814. doi: 10.1016/S0092-8674(01)00390-7
- Li, Z. C., and He, C. Y. (2015). *Physalis floridana* Cell number regulator1 encodes a cell membrane-anchored modulator of cell cycle and negatively controls fruit size. *J. Exp. Bot.* 66, 257–270. doi: 10.1093/jxb/eru415
- Li, Z., Wang, S., Gui, X. L., Chang, X. B., and Gong, Z. H. (2013). A further analysis of the relationship between yellow ripe-fruit color and the capsanthin-capsorubin synthase gene in pepper (*Capsicum* sp.) indicated a new mutant variant in *C. annuum* and a tandem repeat structure in promoter region. *PLoS ONE* 18:e61996. doi: 10.1371/journal.pone.0061996
- Libault, M., Zhang, X. C., Govindarajulu, M., Qiu, J., Tong, Y., Brechenmacher, L., et al. (2010). A member of the highly conserved FWL (tomato fw2.2-like) gene family is essential for soybean nodule organogenesis. *Plant J.* 62, 852–864. doi: 10.1111/j.1365-313X.2010.04201.x
- Liu, D., Sun, W., Yuan, Y., Zhang, N., Hayward, A., Liu, Y., et al. (2014). Phylogenetic analyses provide the first insights into the evolution of OVATE family proteins in land plants. *Ann. Bot.* 113, 1219–1233. doi: 10.1093/aob/mcu061

- Liu, J., Cong, B., and Tanksley, S. D. (2003a). Generation and analysis of an artificial gene dosage series in tomato to study the mechanisms by which the cloned quantitative trait locus fw2.2 controls fruit size. *Plant Physiol.* 132, 292–299. doi: 10.1104/pp.102.018143
- Liu, Y. S., Gur, A., Ronen, G., Causse, M., Damidaux, R., Buret, M., et al. (2003b). There is more to tomato fruit colour than candidate carotenoid genes. *Plant Biotechnol. J.* 1, 195–207. doi: 10.1046/j.1467-7652.2003.00018.x
- Liu, J., VanEck, J., Cong, B., and Tanksley, S. D. (2002). A new class of regulatory genes underlying the cause of pear shaped tomato fruit. *Proc. Natl. Acad. Sci. U.S.A.* 99, 13302–13306. doi: 10.1073/pnas.162485999
- Liu, X., Kim, Y. J., Muller, R., Yumul, R. E., Liu, C., and Pan, Y. (2011). AGAMOUS terminates floral stem cell maintenance in *Arabidopsis* by directly repressing WUSCHEL through recruitment of polycomb group proteins. *Plant Cell* 23, 3654–3670. doi: 10.1105/tpc.111.091538
- Lohmann, J. U., Hong, R. L., Hobe, M., Busch, M. A., Parcy, F., Simon, R., et al. (2001). A molecular link between stem cell regulation and floral patterning in *Arabidopsis*. *Cell* 105, 793–803. doi: 10.1016/S0092-8674(01)00384-1
- Mathieu-Rivet, E., Gévaudant, F., Cheniclet, C., Hernould, M., and Chevalier, C. (2010a). The anaphase promoting complex activator CCS52A, a key factor for fruit growth and endoreduplication in tomato. *Plant Signal. Behav.* 5, 985–987. doi: 10.4161/psb.5.8.12222
- Mathieu-Rivet, E., Gévaudant, F., Sicard, A., Salar, S., Do, P. T., Mouras, A., et al. (2010b). Functional analysis of the anaphase promoting complex activator CCS52A highlights the crucial role of endoreduplication for fruit growth in tomato. *Plant J.* 62, 727–741. doi: 10.1111/j.1365-313X.2010.04198.x
- Monforte, A. J., Diaz, A. I., Cano-Delgado, A., and van der Knaap, E. (2014). The genetic basis of fruit morphology in horticultural crops: lessons from tomato and melon. *J. Exp. Bot.* 65, 4625–4637. doi: 10.1093/jxb/eru017
- Munos, S., Ranc, N., Botton, E., Berard, A., Rolland, S., Duffe, P., et al. (2011). Increase in tomato locule number is controlled by two single-nucleotide polymorphisms located near WUSCHEL. *Plant Physiol.* 156, 2244–2254. doi: 10.1104/pp.111.173997
- Nafati, M., Cheniclet, C., Hernould, M., Do, P. T., Fernie, A. R., Chevalier, C., et al. (2011). The specific overexpression of a cyclin-dependent kinase inhibitor in tomato fruit mesocarp cells uncouples endoreduplication and cell growth. *Plant J.* 65, 543–556. doi: 10.1111/j.1365-313X.2010.04446.x
- Nakagawa, Y., Katagiri, T., Shinozaki, K., Qi, Z., Tatsumi, H., Furuichi, T., et al. (2007). *Arabidopsis* plasma membrane protein crucial for Ca²⁺ influx and touch sensing in roots. *Proc. Natl. Acad. Sci. U.S.A.* 104, 3639–3644. doi: 10.1073/pnas.0607703104
- Nashilevitz, S., Melamed-Bessudo, C., Izkovich, Y., Rogachev, I., Osorio, S., Itkin, M., et al. (2010). An orange ripening mutant links NAD(P)H dehydrogenase complex activity to central and specialized metabolism during tomato fruit maturation. *Plant Cell* 22, 1977–1997. doi: 10.1105/tpc.110.074716
- Nesbitt, T. C., and Tanksley, S. D. (2001). fw2.2 directly affects the size of developing tomato fruit, with secondary effects on fruit number and photosynthate distribution. *Plant Physiol.* 127, 575–583. doi: 10.1104/pp.010087
- Olmstead, R. G., Bohs, L., Migid, H. A., Santiago-Valentin, E., Garcia, V. F., and Collier, S. M. (2008). A molecular phylogeny of the Solanaceae. *Taxon* 57, 1159–1181.
- Pan, Y., Bradley, G., Pyke, K., Ball, G., Lu, C., Fray, R., et al. (2013). Network inference analysis identifies an APRR2-like gene linked to pigment accumulation in tomato and pepper fruits. *Plant Physiol.* 161, 1476–1485. doi: 10.1104/pp.112.212654
- Peralta, I. E., and Spooner, D. M. (2001). Granule-bound starch synthase (GBSSI) gene phylogeny of wild tomatoes (*Solanum* L. section *Lycopersicon*[Mill.]Wettst. subsection *Lycopersicon*). *Am. J. Bot.* 88, 1888–1902. doi: 10.2307/3558365
- Portis, E., Barchi, L., Toppino, L., Lanteri, S., Acciarri, N., Felicioni, N., et al. (2014). QTL mapping in eggplant reveals clusters of yield-related loci and orthology with the tomato genome. *PLoS ONE* 21:e89499. doi: 10.1371/journal.pone.0089499
- Rodriguez-Urbe, L., Guzman, I., Rajapakse, W., Richins, R. D., and O'Connell, M. A. (2012). Carotenoid accumulation in orange-pigmented *Capsicum annuum* fruit, regulated at multiple levels. *J. Exp. Bot.* 63, 517–526. doi: 10.1093/jxb/err302
- Ronen, G., Carmel-Goren, L., Zamir, D., and Hirschberg, J. (2000). An alternative pathway to beta-carotene formation in plant chromoplasts discovered by map-based cloning of beta and old-gold color mutations in tomato. *Proc. Natl. Acad. Sci. U.S.A.* 26, 11102–11107. doi: 10.1073/pnas.190177497
- Sadilova, E., Stintzing, F. C., and Carle, R. (2006). Anthocyanins, colour and antioxidant properties of eggplant (*Solanum melongena* L.) and violet pepper (*Capsicum annuum* L.) peel extracts. *Z. Naturforsch. C.* 61, 527–535. doi: 10.1515/znc-2006-7-810
- Song, W. Y., Martinoia, E., Lee, J., Kim, D., Kim, D. Y., Vogt, E., et al. (2004). A novel family of Cys-rich membrane proteins mediates cadmium resistance in *Arabidopsis*. *Plant Physiol.* 135, 1027–1039. doi: 10.1104/pp.103.037739
- Spinner, L., Gadeyne, A., Belcram, K., Goussot, M., Moison, M., and Duroc, Y. (2013). A protein phosphatase 2A complex spatially controls plant cell division. *Nat. Commun.* 4, 1863. doi: 10.1038/ncomms2831
- Spinner, L., Pastuglia, M., Belcram, K., Pegoraro, M., Goussot, M., and Bouchez, D. (2010). The function of TONNEAU1 in moss reveals ancient mechanisms of division plane specification and cell elongation in land plants. *Development* 137, 2733–2742. doi: 10.1242/dev.043810
- Su, L., Bassa, C., Audran, C., Mila, I., Cheniclet, C., Chevalier, C., et al. (2014). The auxin SI-IAA17 transcriptional repressor controls fruit size via the regulation of endoreduplication-related cell expansion. *Plant Cell Physiol.* 55, 1969–1976. doi: 10.1093/pcp/pcu124
- Symon, D. E. (1987). Placentation patterns and seed numbers in *Solanum* (Solanaceae) fruits. *J. Ade. Bot. Gar.* 10, 179–199.
- Thorup, T. A., Tanyolac, B., Livingstone, K. D., Popovsky, S., Paran, I., and Jahn, M. (2000). Candidate gene analysis of organ pigmentation loci in the Solanaceae. *Proc. Natl. Acad. Sci. U.S.A.* 10, 11192–11197. doi: 10.1073/pnas.97.21.11192
- Tsaballa, A., Pasentsis, K., Darzentas, N., and Tsafaris, A. S. (2011). Multiple evidence for the role of an *Ovate*-like gene in determining fruit shape in pepper. *BMC Plant Biol.* 11:46. doi: 10.1186/1471-2229-11-46
- van der Knaap, E., Chakrabarti, M., Chu, Y. H., Cleveenger, J. P., Illa-Berenguer, E., Huang, Z., et al. (2014). What lies beyond the eye: the molecular mechanisms regulating tomato fruit weight and shape. *Front. Plant Sci.* 5:227. doi: 10.3389/fpls.2014.00227
- Wang, L., He, L. L., Li, J., Li, Z. C., and He, C. Y. (2014). Regulatory change at *Physalis* organ size 1 correlates to natural variation in tomatillo reproductive organ size. *Nat. Commun.* 5, 4271. doi: 10.1038/ncomms5271
- Wang, L., Li, Z. C., and He, C. Y. (2012). Transcriptome-wide mining of the differentially expressed transcripts for natural variation of floral organ size in *Physalis philadelphica*. *J. Exp. Bot.* 63, 6457–6465. doi: 10.1093/jxb/ers299
- Wang, S., Chang, Y., Guo, J., and Chen, J. G. (2007). *Arabidopsis* ovate family protein 1 is a transcriptional repressor that suppresses cell elongation. *Plant J.* 50, 858–872. doi: 10.1111/j.1365-313X.2007.03096.x
- Wang, S., Chang, Y., Guo, J., Zeng, Q., Ellis, B. E., and Chen, J. G. (2011). *Arabidopsis* ovate family proteins, a novel transcriptional repressor family, control multiple aspects of plant growth and development. *PLoS ONE* 6:e23896. doi: 10.1371/journal.pone.0023896
- Whitson, M., and Manos, P. S. (2005). Untangling *Physalis* (Solanaceae) from the physaloids: a two-gene phylogeny of the physalinae. *Syst. Bot.* 30, 216–230. doi: 10.1600/0363644053661841
- Wu, S., Xiao, H., Cabrera, A., Meulia, T., and van der Knaap, E. (2011). SUN regulates vegetative and reproductive organ shape by changing cell division patterns. *Plant Physiol.* 157, 1175–1186. doi: 10.1104/pp.111.181065
- Xiao, H., Jiang, N., Schaffner, E. K., Stockinger, E. J., and van der Knaap, E. (2008). A retrotransposon-mediated gene duplication underlies morphological variation of tomato fruit. *Science* 319, 1527–1530. doi: 10.1126/science.1153040
- Xiao, H., Radovich, C., Welty, N., Hsu, J., Li, D., and Meulia, T. (2009). Integration of tomato reproductive developmental landmarks and expression profiles, and the effect of SUN on fruit shape. *BMC Plant Biol.* 9:49. doi: 10.1186/1471-2229-9-49
- Xu, J., Xiong, W., Cao, B., Yan, T., Luo, T., Fan, T., et al. (2013). Molecular characterization and functional analysis of “fruit-weight2.2-like” gene family in rice. *Planta* 238, 643–655. doi: 10.1007/s00425-013-1916-y

- Yanofsky, M. F., Ma, H., Bowman, J. L., Drews, G. N., Feldmann, K. A., and Meyerowitz, E. M. (1990). The protein encoded by the *Arabidopsis* homeotic gene *agamous* resembles transcription factors. *Nature* 346, 35–39. doi: 10.1038/346035a0
- Zhang, J. S., Khan, M. R., Tian, Y., Li, Z. C., Simone, R., and He, C. Y. (2012). Divergences of MPF2-like MADS-domain proteins have an association with the evolution of the inflated calyx syndrome within Solanaceae. *Planta* 236, 1247–1260. doi: 10.1007/s00425-012-1684-0
- Zhang, J. S., Li, Z., Zhao, J., Zhang, S., Quan, H., Zhao, M., et al. (2014a). Deciphering the *Physalis floridana* double-layered-lantern1 mutant provides insights into functional divergence of the GLOBOSA duplicates within the Solanaceae. *Plant Physiol.* 164, 748–764. doi: 10.1104/pp.113.2.33072
- Zhang, J. S., Zhao, J., Zhang, S., and He, C. Y. (2014b). Efficient gene silencing mediated by tobacco rattle virus in an emerging model plant *Physalis*. *PLoS ONE* 9:e85534. doi: 10.1371/journal.pone.0085534
- Zhang, S. H., Zhao, J., Zhang, J. S., and He, C. Y. (2015). Distinct subfunctionalization and neofunctionalization of the B-class MADS-box genes in *Physalis floridana*. *Planta* 241, 387–402. doi: 10.1007/s00425-014-2190-3
- Zhao, J., Tian, Y., Zhang, J. S., Zhao, M., Gong, P., Riss, S., et al. (2013). The euAP1 protein MPF3 represses MPF2 to specify floral calyx identity and displays crucial roles in Chinese lantern development in *Physalis*. *Plant Cell* 25, 2002–2021. doi: 10.1105/tpc.113.111757
- Zygyer, S., Chaim, A. B., Efrati, A., Kaluzky, G., Borovsky, Y., and Paran, I. (2005). QTLs mapping for fruit size and shape in chromosomes 2 and 4 in pepper and a comparison of the pepper QTL map with that of tomato. *Theor. Appl. Genet.* 111, 437–445. doi: 10.1007/s00122-005-2015-7

Conflict of Interest Statement: The authors declare that the research was conducted in the absence of any commercial or financial relationships that could be construed as a potential conflict of interest.

Copyright © 2015 Wang, Li, Zhao and He. This is an open-access article distributed under the terms of the Creative Commons Attribution License (CC BY). The use, distribution or reproduction in other forums is permitted, provided the original author(s) or licensor are credited and that the original publication in this journal is cited, in accordance with accepted academic practice. No use, distribution or reproduction is permitted which does not comply with these terms.