



Metabolic engineering of the moss *Physcomitrella patens* to produce the sesquiterpenoids patchoulol and α/β -santalene

Xin Zhan¹, Yu-Hua Zhang², Dong-Fang Chen² and Henrik Toft Simonsen^{1*}

¹ Plant Biochemistry Laboratory, Department of Plant and Environmental Sciences, Copenhagen Plant Science Centre, University of Copenhagen, Copenhagen, Denmark

² Corporate R&D Division, Firmenich Aromatics (China) Co. Ltd., Shanghai, China

Edited by:

James Lloyd, Stellenbosch University, South Africa

Reviewed by:

Danièle Werck-Reichhart, Centre

National de la Recherche

Scientifique, France

Dinesh A. Nagegowda, Central

Institute of Medicinal and Aromatic

Plants, India

*Correspondence:

Henrik Toft Simonsen, Plant

Biochemistry Laboratory,

Department of Plant and

Environmental Sciences, University

of Copenhagen, Thorvaldsensvej 40,

1871 Frederiksberg, Denmark

e-mail: hts@plen.ku.dk

The moss *Physcomitrella patens*, has been genetically engineered to produce patchoulol and β -santalene, two valuable sesquiterpenoid ingredients in the fragrance industry. The highest yield of patchoulol achieved was 1.34 mg/g dry weight. This was achieved by non-targeted transformation of the patchoulol synthase and either a yeast or *P. patens* *HMGR* gene under the control of a 35S promoter. Santalene synthase targeted to the plastids yielded 0.039 mg/g dry weight of α/β santalene; cytosolic santalene synthase and 35S controlled *HMGR* afforded 0.022 mg/g dry weight. It has been observed that the final yield of the fragrance molecules is dependent on the expression of the synthase. This is the first report of heterologous production of sesquiterpenes in moss and it opens up a promising source for light-driven production of valuable fragrance ingredients.

Keywords: *Physcomitrella*, sesquiterpenoids, fragrance, patchoulol, santalene

INTRODUCTION

Plant cells synthesize a diverse variety of specialized metabolites. These small organic molecules allow the plants to cope with various types of stress. These metabolites often have biological activities that are beneficial to humans, which make them of high commercial interest to biotechnological industry (Cragg et al., 2011). Many of these biologically active compounds are terpenoids, among these sesquiterpenoids (C15 molecules) have benefited mankind as flavors, fragrances, pharmaceuticals, nutraceuticals, and industrial chemicals (Berger, 2007; Zwenger and Basu, 2008; Simonsen et al., 2013).

Biotechnological production is of special interest for sesquiterpenoids with known pharmacological properties or with application in foods and fragrances, since their limited availability in nature and the structural complexity of the molecules can make biotechnology the only commercial sustainable method of production (Daviet and Schalk, 2010; Simonsen et al., 2013). This however requires profound knowledge on the presence and biosynthesis of terpenoids in the original plant (Simonsen et al., 2009a; Weitzel and Simonsen, 2013). The antimalarial drug artemisinin is properly the sesquiterpenoid with most publications and work on biotechnological production. Recently the production have reached 25g/L of artemisinic acid in yeast and setting the goal for all other biotechnological production of sesquiterpenoids (Paddon et al., 2013).

Patchoulol and α/β -santalol are two sesquiterpenoids with profound woody notes that are used as fragrance ingredients in

many perfumes. They are present in the essential oils of patchouli (*Pogostemon cablin*) and sandalwood (*Santalum album*). Due to the limited natural resources of the plants, the annual production of the essential oils can be very low and unstable leading to fluctuation in the price between 30–200 US dollar/kg for patchoulol and 1000–2000 US dollar/kg for santalol. This price fluctuation has afforded research into the biosynthesis of these valuable sesquiterpenoids and patchoulol synthase (PTS), α/β -santalene synthase (STS) and α/β -santalene monooxygenase (CYP76F39) were recently characterized and with this knowledge biotechnological production was initiated (Deguerry et al., 2006; Jones et al., 2011; Diaz-Chavez et al., 2013). For patchoulol the tobacco plant *Nicotiana tabacum* has been used for heterologously production and the final yield was 0.030 mg/g fresh weight (FW) (approximately 0.300 mg/g dry weight) in the leaves, along with a volatile emission of 50–100 ng/h/FW. One of the major improvements described in tobacco was the targeting of the sesquiterpenoid synthase to the plastids of tobacco. This afforded a 40,000 fold increase in yields (Wu et al., 2006), thus was also tested here. Biotechnological production of santalene has been performed in yeast, and afforded 0.086 mg/g santalene per biomass (Scalcinati et al., 2012).

As with other attempts of biotechnological production of sesquiterpenoids, e.g., in yeast (Ro et al., 2006) up-regulation of the key step in cytosolic terpenoid pathway, the HMGR, was attempted. It has been demonstrated that by using a version where the regulatory parts of the gene is removed through truncation,

up to 75% increase in production can be achieved (Ro et al., 2008). The use of truncated HMGR was also performed here. HMGR is the key regulatory enzyme in the MVA pathway in both plants and yeast, and expression studies in plants have shown that regulation is on both the transcription and the posttranscriptional level, but the genes encoding all enzymes in the pathways MVA and MEP are not tightly co-regulated. This suggests that up regulation should be done on all the individual enzyme in order to obtain the highest flux of carbon through to the precursors of the desired terpenoid, here farnesyl diphosphate (FPP) (Vranova et al., 2013).

The moss *Physcomitrella patens*, a non-vascular plant, has been proposed as a novel production host to produce sesquiterpenoids and diterpenoids in recent years (Anterola et al., 2009; Simonsen et al., 2009a; Bach et al., 2014). *P. patens* itself produces large amounts (approximately 3 mg/g d.w.) of the tetracyclic diterpene *ent*-16- α -hydroxy-kaurene, which reaches concentrations about one-third that of chlorophyll a and b (Von Schwartzenberg et al., 2004). In 2006, the bi-functional diterpene synthase gene named copalyl pyrophosphate/kaurene synthase (*CPS/KS*) gene was cloned from *P. patens*. The characterization showed that enzyme afford two diterpenoid products *ent*-kaur-16-ene and *ent*-16- α -hydroxy-kaurene (Hayashi et al., 2006). *CPS/KS* is the only active terpene synthase found in the genome of *P. patens*. Thus, establishing a knock out of this gene might afford higher yields of other terpenoids if this would not show any severe reduction of the growth of the protonemal tissue or other effects with a negative influence on the final production of sesquiterpenoids.

Transformation of *P. patens* unlike other plants can utilize both homologous recombination and non-targeted transformation (Bach et al., 2014). In this study, non-targeted transformation has been used utilizing already established in-house vectors.

Here we report the production of two valuable sesquiterpenoids for the fragrance industry patchouli and β -santalene in the moss *P. patens*. This is the first report on heterologous production of sesquiterpenoids in *P. patens* along with some attempts to increase the production.

MATERIALS AND METHODS

THE MOSS CULTIVATION AND MAINTENANCE

Wild type *P. patens* (Gransden ecotype) was obtained from the International Moss Stock Center at the University of Freiburg (<http://www.moss-stock-center.org/>). This was propagated on PhyB agar plates or in PhyB liquid media under standard condition for *P. patens* cultivation (Cove et al., 2009). For sub-culturing and maintenance of wild type and transformed lines *P. patens* tissue was blended using a Polytron tissue homogenizer (PT 1200E, Kinematic AG) and distributed evenly onto new PhyB agar plates (Cove et al., 2009).

VECTORS CONSTRUCTION

The cloning vector pJET1.2 (Thermo Scientific) was used as the backbone for construction of expression vectors for moss transformation. Two USER (Uracil-Specific Excision Reagent) compatible binary vectors pCAMBIA1300Su and 2300Su were both double-digested by *Psi*I and *Pme*I (New England Biolabs)

(Nour-Eldin et al., 2006). The digested blunt-end DNA fragments containing the antibiotic resistant cassettes and the USER cloning sites were ligated into the pJET1.2 backbone and the constructed vectors were named pUNI33 and pUNI6, respectively.

The two genes patchouli synthase gene (*PTS*) from *P. cablin* and α/β -santalene synthase gene (*STS*) from *S. album* were provided by Firmenich and amplified with USER-compatible overhangs by the primer pairs *PTS*-F&R and *STS*-F&R. They were subsequently integrated into pUNI33 using USER cloning techniques and named pUNI33 *PTS* and pUNI33 *STS* (Nour-Eldin et al., 2006).

For overexpression of truncated HMGR in *P. patens* the *PpHMGR* was obtained from the cosmos database (www.cosmos.org). The catalytic domains were predicted by THMM Server v. 2.0 (<http://www.cbs.dtu.dk/services/TMHMM/>) and compared with the truncated HMGR version from yeast. This yielded a truncated version identified as *PpHMGR*. This and truncated *S. cerevisiae* HMGR gene (Ro et al., 2006) were amplified using the primer pairs *PpHMGR*-F&R and *SctHMGR*-F&R and integrated into pUNI6 and named pUNI6 *PpHMGR* and pUNI6 *SctHMGR*.

A *P. patens* lines knocked out in the *CPS/KS* gene was obtained using a previously published plasmid pCL755 that was linearized and through homologous recombination lead to a knock out of the *CPS/KS* gene (Zhan et al., in press).

Plastidic targeting was obtained through adding the *Arabidopsis* RuBisCO small subunit transit peptide to the genes of interest. For plastidic targeting of the *PTS* gene, the *tpPTS* fragment was amplified using the primer pair *tp*-F & *PTS*-R from pBDON *tpPTS*-*tpFPS* (provided by Firmenich) with overhangs for USER cloning and inserted into pUNI33 (named pUNI33 *tpPTS* afterwards) (Wu et al., 2006). To construct the *tpSTS* fragment, the transit peptide sequence from the pBDON *tpPTS*-*tpFPS* construct and the *STS* gene was amplified individually by primer pair's *tp*-F & *tp*-R and *tpSTS*-F & *STS*-R with USER overhangs. They were subsequently fused together and cloned into pUNI33 by USER fusion (named pUNI33 *tpSTS*) (Nour-Eldin et al., 2010). All the information about the primers and vectors used are listed in Table S1 and S2.

The *pfu*X7 DNA polymerase was used in all the PCR reactions and the classical 3-step PCR program was used to amplify the DNA fragments used for subsequent USER cloning techniques as previously described (Nørholm, 2010).

PEG-MEDIATED MOSS TRANSFORMATION AND SELECTION

Before PEG-mediated transformation, all vectors were linearized using *Not*I-HF (New England Biolabs), concentrated by isopropanol and approximately 20 μ g of DNA was prepared, except pCL755, which was double digested by *Eco*RI and *Nde*I. Linearized DNA was then mixed with moss protoplasts using the PEG-mediated transformation method previously described (Cove et al., 2009). After 5–7 days of regeneration, the moss tissue was moved to antibiotic selection to recover stable transgenic lines using the appropriate antibiotics (Bach et al., 2014). Stabled transgenic lines were recovered after two rounds of antibiotic selection, and are kept as protonemal tissue through sub culturing of the stable lines.

VOLATILE METABOLITE PROFILING

The volatile metabolite profile of all the transgenic lines was determined by HS-SPME (Headspace-Solid Phase Micro-Extraction) and GC-MS (Gas Chromatography-Mass Spectrum) analysis that has been shown to be very useful technique for volatile plant metabolites (Drew et al., 2012).

For fast and qualitative measurements of the newly transformed lines, these were grown in 20 ml GC vials on solid PhyB media. This allows for the use of autosampler for handling of a large number of lines using HS-SPME GC-MS for analysis of the volatiles. The HS-SPME GC-MS was performed as previously described (Simonsen et al., 2009b; Bach et al., 2014), shortly the fiber used for HS-SPME was Supelco 27298-U, 50/30 μm divinylbenzene-carboxen-polydimethylsiloxane-stableFlex/SS (1cm). The fiber was injected 5 cm into the vial to collect the HS with 1 cm of the fiber exposed. The extraction time was 60 min without agitation. The fiber was directly transferred to the injection port after sampling with desorption time of 2 min. Fibers were reconditioned for 10 min in a needle-oven at 270°C. The GC-MS analysis was performed on a Shimadzu—GCMS-QP2010 plus (GC-2010) with a CTC autosampler AOC-5000, equipped with non-cooled tray for 20 ml vials. The injection temperature was set for 250°C. The column used was a Supelco 28466-U, SLB-TM 5ms, fused Silica capillary column 15 m, 0.1 mm diameter \times 0.1 μm film thickness inserted directly into the ion source of the MS. Driving gas was He (99.9999%). Using direct injection and pressure control mode the pressure was kept at 162.1 kPa giving a column flow of 0.15 mL min^{-1} . The oven temperature was set at 45°C for 3 min, then increased to 270°C with a rate of 10° min^{-1} and maintained for 8 min. The ion source temperature was 260°C with an interface temperature 250°C. The total run time was 34 min. The ionization electron energy was 70 eV and the mass range scanned was 40–600 Da in full scan acquisition mode. For analysis of essential oils, a solvent cut was set at 8 min. All data were analyzed using the Shimadzu software Lab Solutions, GCMS Solutions Ver 2.50 SU3, using the latest libraries provided by NIST05 and Wiley (Wiley 8.0) including our own data references. Obtained spectra were compared with the spectra in the mass spectral libraries. Compounds were identified comparing the data with library information of MS and retention indices (*I*). All reference *I*s were drawn from www.pherobase.com in April 2014, and based on reference within, references were checked for all compounds. Patchouli and α -santalene standards was obtained from Firmenich.

VOLATILE METABOLITE QUANTIFICATION

Quantification of volatile metabolites was performed as described previously (Bach et al., 2014). Fresh moss tissues were blended and inoculated (each inoculum was approximately 10 mg d.w.) into 50 ml PhyB medium in 250 ml shake flasks and cultivated on a rotary shaker in the standard conditions. After 2 weeks, the media and moss tissues were extracted using 50 (for the PTS lines) or 25 ml heptane (for the STS lines) by hand shaking for 1 min. After phase separation, 1 ml of the organic phase was taken into a GC vial and 1 μl was injected into the GC-MS. Quantification was achieved based on a standard curve from authentic standards (patchouli and α -santalene). Meanwhile,

the moss tissue was filtered using a vacuum pump and dried at 60°C overnight and the dry weights were measured the next day. GC-MS analysis was performed on a GCMS 7890/5975C (Agilent) equipped with a LTM column module (DB-1MS) (10 m \times 0.18 mm i.d. \times 0.18 μm). The samples (1 μl) were injected with a split ratio of 25:1 into LTM (DB-1MS) column using the following temperature program: 50°C (held for 1 min), 50–320°C (30°C /min, held for 1 min), and the total time is 11 min (2 min solvent delay). The oven temperature was 200°C (held for 11 min). The injector temperature of GC was 250°C. The ion source temperature of the mass spectrometer was 230°C and the transfer line temperature was set at 250°C. Helium was used as carrier gas at a constant flow rate of 0.7 ml/min. Data were acquired by EI+ with SIM (Selected Ion Monitor) mode. The detail of the SIM method to quantify patchouli and α -santalene was as follows: RT (retention time) 2.00–6.00 min diagnostic ions 98, 138, 161, 222 were selected to monitor patchouli and 93, 94, 107, 121, 122, 204 for α/β -santalene. For *ent*-16- α -hydroxy-kaurene [(4aR,6aS,8R,9R,11aR,11bR)-4,4,8,11b-tetramethyltetradecahydro-6a,9-methanocyclohepta- α -naphthalen-8-ol], RT 6.00–11.00 min 232, 257, 272, 290 were selected as diagnostic ions. *Ent*-16- α -hydroxy-kaurene was quantified in approximate level according to the external standard (patchouli or α -santalene) curves. The statistical significance was calculated using Student's *t*-test defining the significant level as *P* value < 0.05. Data are given in Table 1.

NON-VOLATILE METABOLITES QUANTIFICATION

Five non-volatile metabolites in the terpenoid biosynthetic pathway that all are part of the general plant metabolites, stigmaterol, chlorophyll a+b, β -carotene and lutein were quantified using external authentic standards. The statistical significance was calculated using Student's *t*-test defining the significant level as *P* value < 0.05.

For stigmaterol measurement, 2-week old moss tissue of each line was freeze-dried overnight and dissolved in 2 ml dichloromethane:methanol (1:1) and vortexed for 2 h. The solution were transferred into a 2 ml centrifuge tube and centrifuged at 4400 rpm for 5 min. The organic phase were subsequently filtered and 1 μl of the extract was injected into a GC-FID for analysis. The quantification was performed by Agilent GC-FID (6890) with a LTM column module. GC method: column DB-1MS 10 m, 0.18 mm ID, 0.18 μm film, 0.7 ml/min He constant flow, injector 250°C, oven: 150°C, 1 min; 150–340°C, 10°C/min, 340°C 2 min.

For the measurement of pigments, 2-week old moss tissue was freeze dried overnight and soaked in 30 ml acetone/H₂O/25% NH₄OH (80/19/1) and blended using the tissue homogenizer to disrupt the dry biomass. The samples were then vortexed for 1 h and an aliquot of the solution was transferred into 1.5 ml centrifuge tube and centrifuged at 4400 rpm for 5 min. The organic phases were subsequently transferred into HPLC vials and 15 μl was injected into an Agilent High-Performance Liquid Chromatography 1200 series with a photodiode array detector. The column was a Waters Atantis® T3 (2.1 \times 150 mm, 3 μm) set at 35°C. The solvent system consisted of two solvents: A: acetonitrile/methanol/water (84:9:7), and B: methanol/ethyl acetate

Table 1 | Production levels of patchouli and α/β -santalene in the different moss lines, along with *ent*-16- α -hydroxy-kaurene, stigmaterol, chlorophyll, lutein and carotene.

	Patchouli	α -santalene	β -santalene	<i>ent</i> -16- α -OH-kaurene	Stigmaterol	Chlorophyll a	Chlorophyll b	Lutein	β -carotene
WT				2.42 ± 0.10	1.83 ± 0.09	27.2 ± 5.63	5.57 ± 0.99	2.39 ± 0.34	2.65 ± 0.43
KO				0	1.54 ± 0.03	33.3 ± 3.86	7.73 ± 0.89	2.97 ± 0.35	3.36 ± 0.41
WT-PTS10	0.29 ± 0.04			3.23 ± 0.07	1.70 ± 0.30				
WT-PTS14	0.20 ± 0.10			0.16 ± 0.11	1.70 ± 0.20				
WT-PTS19	0.83 ± 0.08			0.61 ± 0.14	1.61 ± 0.08				
WT-PTS27	0.32 ± 0.04			0.39 ± 0.13	1.02 ± 0.06				
WT-PTS35	0.60 ± 0.04			0.22 ± 0.03	1.38 ± 0.26	24.1 ± 1.43	5.98 ± 0.32	2.09 ± 0.13	2.45 ± 0.26
PTS35-S16	1.33 ± 0.36			0.57 ± 0.17	2.13 ± 0.07				
PTS35-S36	1.00 ± 0.24			0.66 ± 0.13	1.87 ± 0.17				
PTS35-S39	1.34 ± 0.04			0.43 ± 0.09	1.79 ± 0.15				
PTS35-KO	0.38 ± 0.03			0	2.04 ± 0.07	31.5 ± 1.83	8.03 ± 0.32	2.81 ± 0.09	2.76 ± 0.09
WT-tpPTS2	0.02 ± 0.01			1.54 ± 0.14	2.00 ± 0.22	29.2 ± 5.86	6.57 ± 1.22	2.58 ± 0.56	3.05 ± 0.56
WT-STS3		ND	ND	3.21 ± 0.55	1.52 ± 0.07				
WT-STS6		ND	ND	1.69 ± 0.37	1.23 ± 0.13				
WT-STS11		ND	ND	0.04 ± 0.02	1.55 ± 0.21				
WT-STS13		ND	ND	1.51 ± 0.50	1.21 ± 0.11				
STS6-P7		0.022 ± 0.011	0.020 ± 0.010	0.850 ± 0.094	1.43 ± 0.38				
STS6-P12		0.005 ± 0.000	0.005 ± 0.000	0.075 ± 0.000	1.90 ± 0.34				
STS6-P14		0.010 ± 0.002	0.009 ± 0.002	0.409 ± 0.039	1.35 ± 0.06				
STS6-P19		0.003 ± 0.001	0.003 ± 0.001	0.132 ± 0.010	1.30 ± 0.16				
STS6-P20		0.005 ± 0.000	0.004 ± 0.000	0.520 ± 0.006	1.39 ± 0.10				
STS6-S17		0.005 ± 0.001	0.005 ± 0.002	0.478 ± 0.044	2.13 ± 0.17				
STS6-S18		0.006 ± 0.001	0.005 ± 0.001	0.442 ± 0.115	2.09 ± 0.48				
STS6-S19		0.006 ± 0.001	0.005 ± 0.001	0.344 ± 0.014	2.32 ± 0.28				
STS6-S29		0.005 ± 0.001	0.004 ± 0.001	0.129 ± 0.010	1.61 ± 0.24				
WT-tpSTS1		0.039 ± 0.008	0.035 ± 0.005	16.557 ± 5.034	1.17 ± 0.05	39.1 ± 0.71	7.84 ± 0.29	3.37 ± 0.25	3.88 ± 0.09

WT, the wild type line; KO, *PpCPS/KS* knockout line; WT-PTS/STS, cytosolic patchouli synthase (PTS)/santalene synthase (STS) lines; PST35/STS6-Sx, *SctHMGR*-overexpressing PTS/STS lines; STS6-Px, *PptHMGR*-overexpressing STS lines; PTS35-KO, *PpCPS/KS* knock out in WT-PTS35; WT-tpPTS/tpSTS, plastid targeted PTS/STS lines in WT background; ND, Not Detectable. Unit, mg/g d.w.

(68:32). Both solvents contained 0.1% triethylamin. Samples was eluted with a flow rate of 0.8 ml/min with a linear gradient from 100% A to 100% B over 20 min. This was followed by an isocratic elution with 100% B for 5 min, and a linear gradient of 100% B to 100% A in 1 min, then the column was equilibrated with 100% A for 9 min set to 1 ml/min.

TRANSCRIPT ANALYSIS OF SELECTED TERPENOID GENES

The terpene synthase genes PTS and STS, along with the regulatory gene HMGR in the cytosolic part of the terpenoid biosynthesis, were selected for transcript analysis. Only the iso-genes with the most abundant EST evidences were selected for transcripts level study according to the cosmos database (www.cosmos.org). The transcripts were quantified by RT-qPCR (Real Time-quantitative PCR). Three biological replicates were selected for each transgenic line 2 weeks following subculture and their total RNAs were extracted using Spectrum™ Plant Total RNA Kit (Sigma) and the concentrations and quality (A260/A280 > 1.8; A260/A230 > 2.0) were measured using Nanodrop 1000D. The first-strand cDNA was subsequently generated using iScript™ cDNA synthesis Kit (Bio-Rad). The cDNA was then used as templates in RT-qPCR using the dyNAmo SYBR Green qPCR

kit (Thermo Scientific). *P. patens actin2* (NP_188508) was used as the reference gene here and the transcripts level was calculated using the $2^{-\Delta\Delta t}$ method (Livak and Schmittgen, 2001). The nucleotide sequences of the qPCR primers are listed in Table S3. The statistical significance was calculated using Student's *t*-test defining the significant level as *P* value < 0.05.

RESULTS

P. patens was engineered to produce patchouli, α - and β -santalene by non-targeted transformation of PTS and STS. Additionally, the yields of patchouli, α - and β -santalene were improved by HMGR overexpression under the control of the 35S promoter. The yield of α - and β -santalene was also improved in one transgenic line where STS was targeted to the chloroplasts. However, disruption of the only functional endogenous terpene synthase in *P. patens CPS/KS* gene did not improve, but rather reduced the production levels of patchouli, α - and β -santalene.

VOLATILE PROFILES OF PTS EXPRESSING *P. PATENS* LINES

To generate cytosolic PTS lines, wild type (WT) moss were transformed with the linearized vector pUNI33 PTS by non-targeted transformation. After two rounds of antibiotic

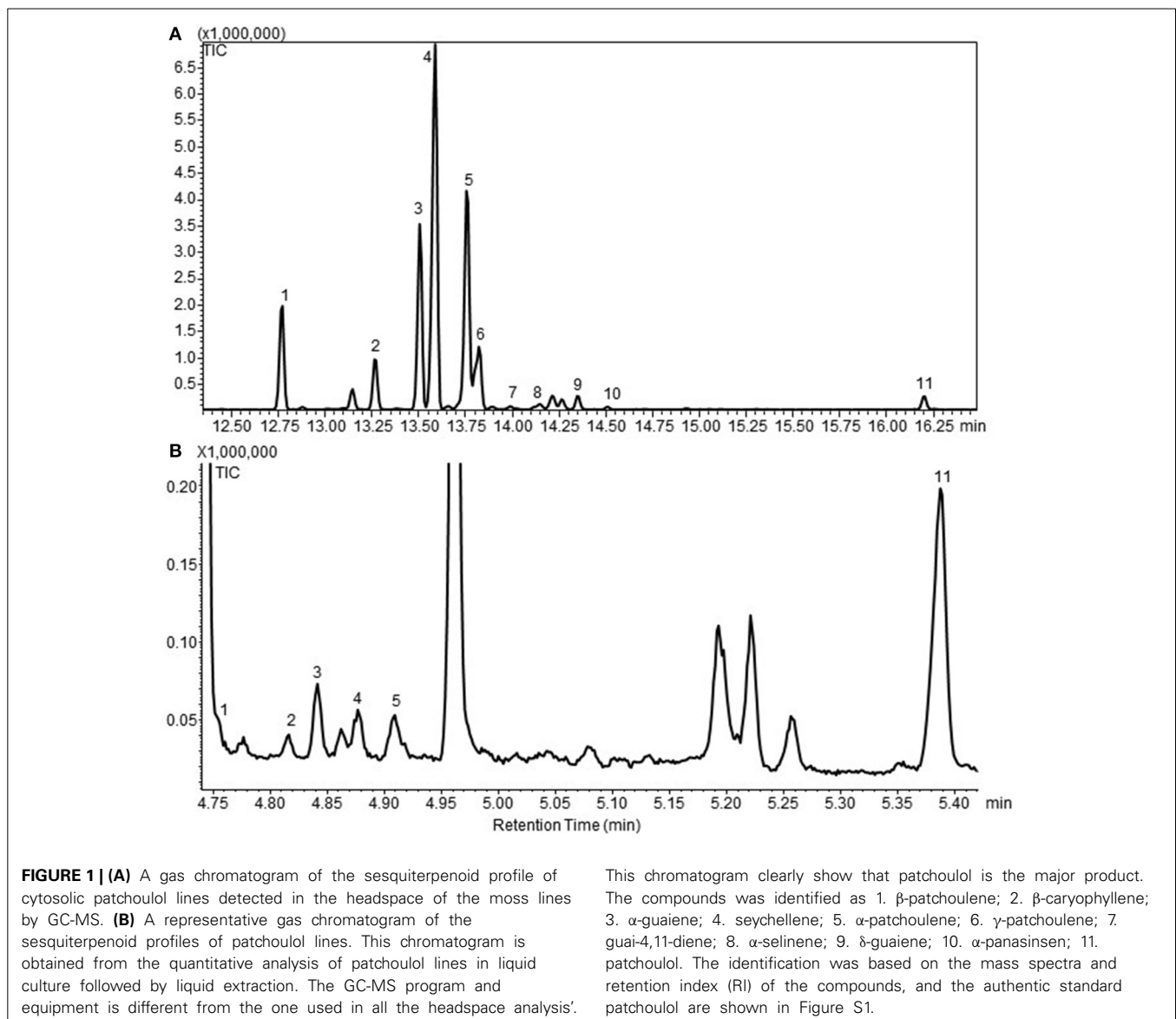
selection, 44 independent stable lines named WT-PTS1 to WT-PTS44 were obtained. Of these, 29 emitted patchouliol and other sesquiterpene products was analyzed by HS-SPME-GCMS (Figure 1A). Eleven sesquiterpenoids were identified in the headspace in addition to the endogenous diterpenoids (Hayashi et al., 2006; Zhan et al., in press), being β -patchoulene (1), β -caryophyllene (2), α -guaiene (3), seychellene (4), α -patchoulene (5), γ -patchoulene (6), guai-4,11-diene (7), α -selinene (8), δ -guaiene (9), α -panasinsen (10), and patchouliol (11). In the headspace, it was observed that seychellene was the most abundant followed by α -patchoulene and α -guaiene. Using liquid extraction patchouliol was found to be the major sesquiterpenoid product (Figure 1B) along with other sesquiterpenoids, this is in line with previous findings (Deguerry et al., 2006).

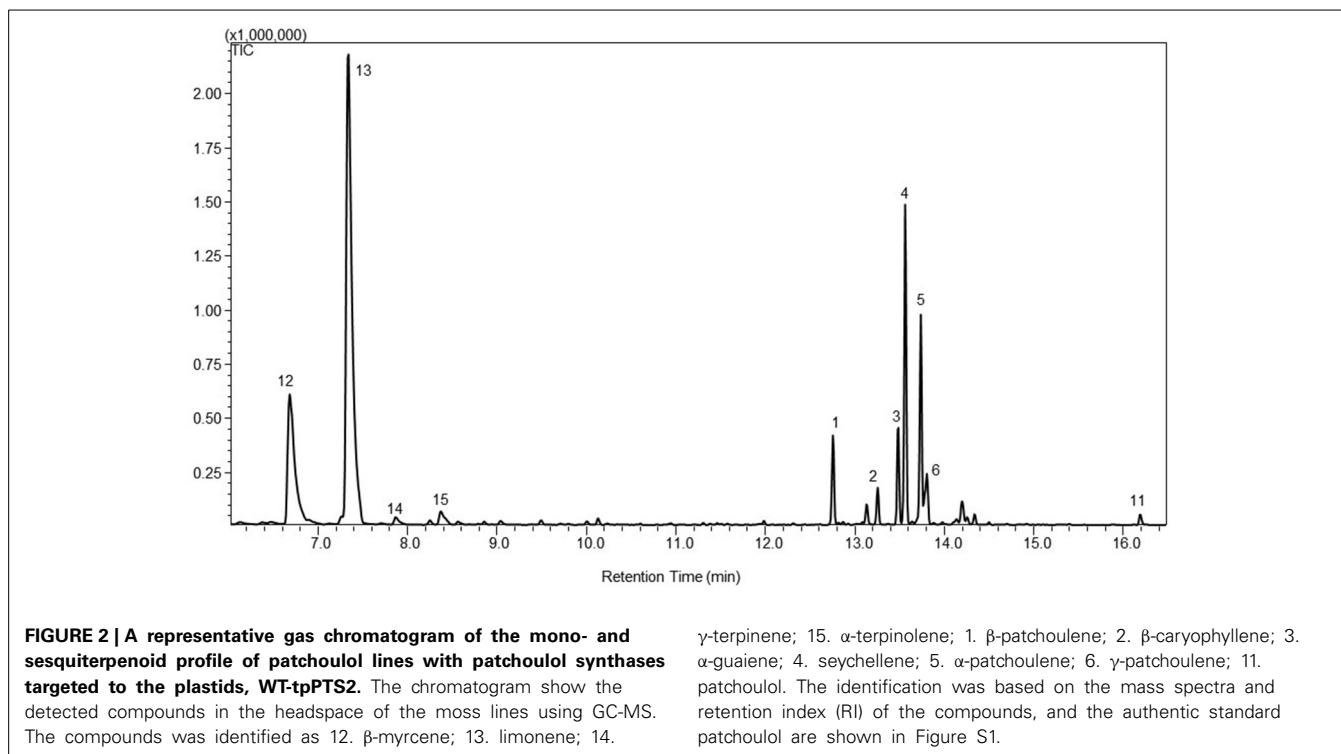
The PTS enzyme was also targeted into the chloroplasts of *P. patens* by fusing the transit peptide of *Arabidopsis* RuBisCO

small subunit to the N-terminus of the enzyme (Wu et al., 2006). Wild type *P. patens* and PpCPS/KS KO line were used as the background lines to test the effect of the plastidic targeting of the PTS enzyme on patchouliol production. Besides the native diterpenoids and the heterologous sesquiterpenoid products found in the cytosolic PTS lines, the headspace analysis of the plastidic PTS lines showed the emission of the monoterpene products β -myrcene (12), limonene (13), γ -terpinene (14), and α -terpinolene (15) (Figure 2).

QUANTIFICATION OF PATCHOULOL IN TRANSGENIC *P. PATENS* LINES

Five lines expressing PTS, WT-PTS10, 14, 19, 27 and 35, were selected according to their relatively larger peak area of seychellene in the headspace for metabolite quantification. Quantification of the sesquiterpenoids showed that the five WT-PTS lines produced 0.2–0.8 mg patchouliol/g dry weight (d.w.) (Table 1).





In order to increase the yield of patchouli truncated versions of *HMGR* was introduced into a *PTS* expressing moss. One of the best producers, WT-PTS35 was selected as the background line for this experiment. In order to avoid the post-translational regulation (Chappell et al., 1995) the N-terminal truncated *HMGR* from *Saccharomyces cerevisiae* (*SctHMGR*) was used for overexpression. In the *SctHMGR* (truncated *S. cerevisiae* *HMGR*)-overexpressing *PTS* lines, three of the 39 obtained transgenic lines named PTS35-S16, PTS35-S36, and PTS35-S39 were selected according to the peak areas of seychellene observed in headspace for the subsequent metabolite quantification. The best line afforded a 2-fold increase of the patchouli level compared to the background line. The overall yield was up to 1.34 mg/g d.w. of patchouli in PST35-S39 after 2 weeks of cultivation. This is highest yield obtained of patchouli, and these lines have a profound scent of patchouli during cultivation.

P. patens have one functional endogenous terpene synthase gene *PpCPS/KS* (Hayashi et al., 2010; Zhan et al., in press). In order to increase the levels of patchouli a knock-out of this synthase in the patchouli producing line WT-PTS35 was established as previously described (Zhan et al., in press). This afforded a 40% lower yield than the background with a total of 0.38 mg/g d.w. The molecular explanation for this effect needs further studies, but results indicate that this strategy is challenging.

The patchouli producing line, where *PTS* was targeted to the plastids only afforded a total yield of 0.02 mg/g after 14 days of cultivation, which is different from what was previously observed (Wu et al., 2006).

VOLATILE PROFILES OF STS EXPRESSING P. PATENS LINES

Santalene synthase gene was introduced into *P. patens* using the same approach as with *PTS*. This afforded 15 independent

transgenic lines after two rounds of antibiotic selection. Four, named WT-ST3, 6, 11 and 13, showed emission of α -santalene (21), α -bergamotene (22), epi- β -santalene (23) and β -santalene (24) into the headspace besides the endogenous diterpenoid metabolites (Figure 3). The co-expression of truncated *HMGR* genes did not change the volatile profile, but significantly enlarge the amount of observed sesquiterpenoids.

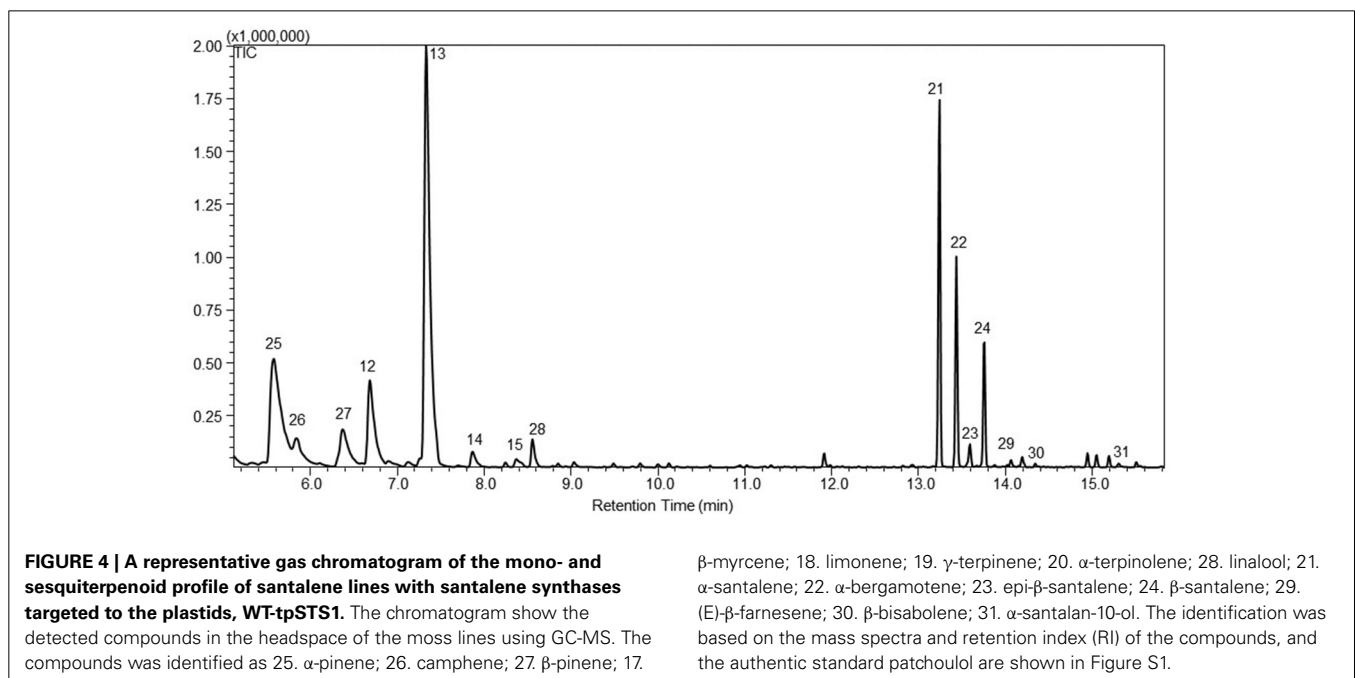
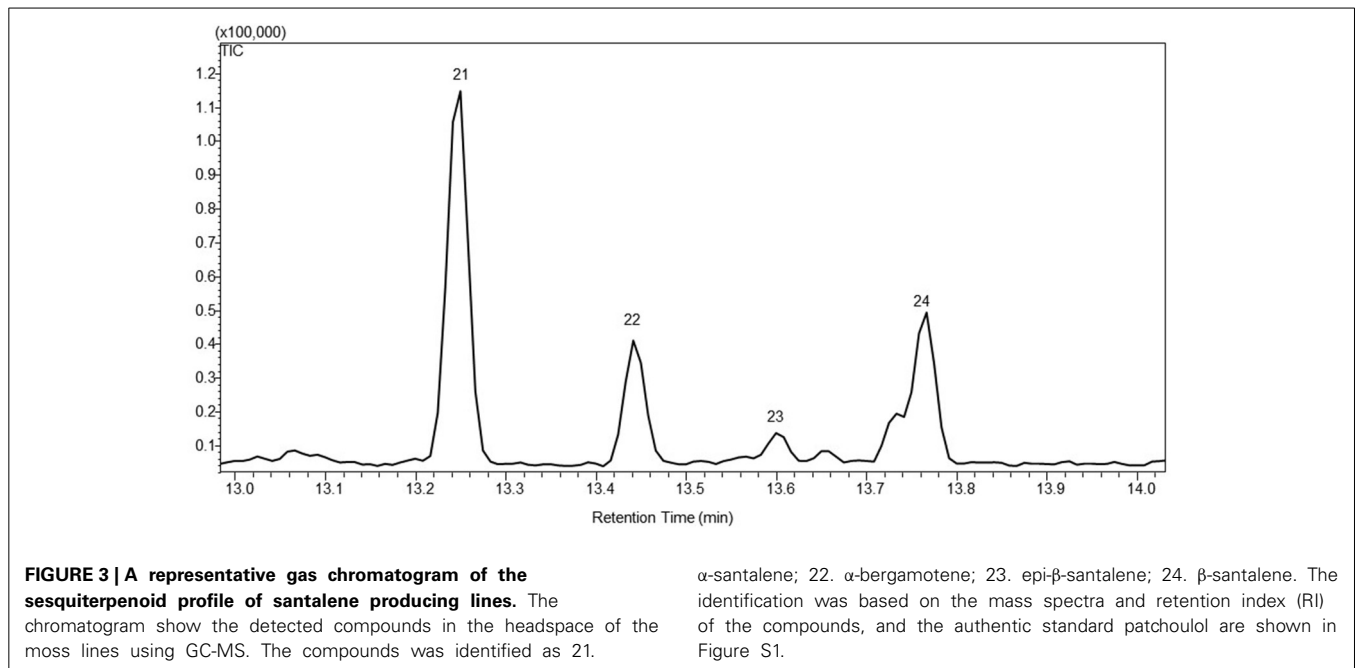
As with *PTS*, *STS* was targeted to the plastids of *P. patens* using the same approach. Four plastidic *STS* lines were obtained and headspace analysis showed that one of the four lines, named WT-tpSTS1, emitted both sesquiterpenoids and monoterpenoids (Figure 4). The monoterpenoids were identified as α -pinene (25), camphene (26), β -pinene (27), β -myrcene (17), limonene (18), γ -terpinene (19), α -terpinolene (20), and linalool (28). Three additional sesquiterpenoids, (E)- β -farnesene (29), β -bisabolene (30), and α -santalol-10-ol (31) were also detected in this plastidic line, which were not observed in the cytosolic lines (Figure 4).

QUANTIFICATION OF α/β -SANTALENE IN TRANSGENIC P. PATENS LINES

The yield of α - and β -santalene could not be quantified in the four cytosolic WT-*STS* lines (Table 1), even though α - and β -santalene was identified in the headspace.

In order to increase the yields of α - and β -santalene the line WT-*STS*6 was transformed with N-terminal truncated versions of *HMGR* from either moss *P. patens* (*PptHMGR*) or yeast *S. cerevisiae* (*SctHMGR*). Ten transgenic *STS* lines with *PptHMGR* or *SctHMGR* overexpression were obtained and the yields of α - and β -santalene after 14 days of cultivation were found to be in the range of 0.003–0.022 mg/g d.w. (Table 1).

STS was also targeted into the chloroplasts. This afforded 0.039 and 0.035 mg/g d.w. of α - and β -santalene in WT-tp*STS*, which



is the highest α - and β -santalene yield achieved in *P. patens* (Table 1).

GENERAL TERPENOID METABOLITE LEVELS IN THE TRANSGENIC LINES

Ent-16- α -hydroxy-kaurene was decreased by introduction of the heterologous terpenoid synthases in the majority of the established lines. In WT-PTS19, 27, 35, and WT-ST511 the amount of *ent*-16- α -hydroxy-kaurene was significantly reduced compared to the WT moss ($P < 0.05$) (Table 1), only the level

of *ent*-16- α -hydroxy-kaurene in WT-tpSTS1 was significantly increased compared to WT.

Overexpression of *SctHMGR* in WT-PTS35 did increase the amounts of *ent*-16- α -hydroxy-kaurene by 2–3 folds relative to the background, but this was still lower than in the WT. Overexpression of *PptHMGR* or *SctHMGR* in WT-ST56 further reduced the amounts of *ent*-16- α -hydroxy-kaurene (Table 1). The reduction of diterpene levels suggest that isopentenyl diphosphate levels in the plastids are affected by the levels and use of isopentenyl diphosphate in the cytosol.

Stigmasterol, the primary sterol constituent in *P. patens* (Morikawa et al., 2009), was quantified for all the transgenic lines. It was decreased in all transgenic lines expressing either *PTS* or *STS* in WT moss background, except the plastidic *PTS* line WT-tpPTS2 (Table 1). The strong reduction of stigmasterol in these lines might correlate with production of new sesquiterpenoids, since they used the same precursor FPP. For all the lines with overexpression of *PptHMGR* or *SctHMGR*, an increase in stigmasterol level was observed when compared to the background lines (Table 1) again suggesting that more FPP also affect the levels of sterols. When compared to WT, the amounts of stigmasterol were even higher in some lines, which indicate an overall increased metabolic flux through the MVA pathway.

The pigments chlorophyll a and b, lutein and β -carotene were also quantified in five of the *PTS/STS* lines (Table 1), but no significant change was observed for any of the transgenic lines.

ANALYSIS OF TRANSCRIPTS RELATED TO TERPENOID BIOSYNTHESIS

In order to test the correlation between the enzyme expression levels and chemical profiles of the transgenic moss lines and improve the understanding of terpenoid metabolism in *P. patens*, the terpene synthases and HMGR's were analyzed for their transcripts level change by RT-qPCR (Vranova et al., 2013). The results are given in Table 2. The expression levels of the terpene synthases and the significant change of HMGR might explain change in the levels of the desired product in the individual lines, though the use of actin as reference gene increase the error margin of the analysis. Especially *PTS35-S16*, *36*, and *37* have a combination of high level of *PTS* and *HMGR* overexpression and high level of production of patchouliol.

DISCUSSIONS

Efforts to develop microbial platforms for terpenoid production, especially the yeast *S. cerevisiae*, have been ongoing for more than 20 years (Asadollahi et al., 2009, 2010; Paddon et al., 2013). By combining the rational genetic engineering of yeast and optimization of the fermentation process, a commercially-relevant high titer of 25 g/L of artemisinic acid has been achieved, a sesquiterpene precursor to the antimalaria drug artemisinin (Paddon et al., 2013).

P. patens clearly shows a potential to become an efficient producer of terpenoids. With only a few modification and no culture optimization, we afforded a total yield of patchouliol of 1.34 mg/g

d.w. in a 50 ml culture making it ca. 1.00 mg/L, even though large differences was observed in the various stable lines produced.

In all the *STS* lines, the yields of α - and β -santalene were far below the ones of patchouliol in the *PTS* lines, although the same expression vectors and overexpression strategies was used. The examination on the transcripts level of the *STS* lines revealed the extremely low expression levels of the *STS* gene, which could explain the low yields of α - and β -santalene. The observed expression levels are based on actin. Actin is not the best choice of reference gene, but it is estimated that the error introduced by the use of actin cannot explain the difference in expression between the two heterologous terpene synthase (Pan et al., in press). The molecular mechanism leading to the low expression of the *STS* gene is unknown, but positional effects introduced during transformation along with unknown transcriptional regulations could be the explanations. If the low expression level can be overcome, e.g., by using homologs recombination into neutral locus's, or by using versions of *STS* where the codon usages is optimized for moss expression this could lead to higher production levels of α - and β -santalene. The use of codon-optimized genes to increase translation have previously been shown to be very useful (Stenøien, 2004, 2007), whereas understanding of positional effects in the moss genome is much less understood.

HMGR catalyzes the key regulatory step in the MVA pathway (Vranova et al., 2013), thus is the first enzyme to be up regulated in terpenoid production systems (Asadollahi et al., 2010; Paddon et al., 2013). The yield of patchouliol was increased by 1.7 to 2.2-fold and stigmasterol by 1.3 to 1.5-fold upon the overexpression of a truncated yeast *HMGR* (*SctHMGR*) in WT-*PTS35* (*PTS-S16*, *36* and *39*, Table 1). The introduced *SctHMGR* only showed very low expression, but led to an up-regulation of the endogenous *HMGR* gene that also would be a benefit for downstream biosynthesis of terpenoids. The same was also observed when both moss and yeast *HMGR* was overexpressed in the α - and β -santalene producing lines (WT-*STS6*). Due to the low background production, the fold increase could not be determined for α/β -santalene, but the level of α - and β -santalene could be detected after the introduction. The use of moss or yeast *HMGR* did not show a difference in the levels of production, but would possibly allow for the use of both genes in future production lines in order to increase the yields even further. The increased levels of the sterols could allow for a down regulation of squalene synthase providing higher levels of FPP

Table 2 | Expression levels of patchouliol synthase gene (*PTS*), santalene synthase gene (*STS*) and hydroxy-methylglutaryl reductase (*HMGR*) in the different mutant lines given in Δ CT-values.

	WT	KO	WT-PTS10	WT-PTS14	WT-PTS19	WT-PTS27	WT-PTS35	PTS35-S16	PTS35-S36	PTS35-S39	WT-tpPTS2	PTS35-KO	WT-STS6	WT-STS13	WT-tpSTS1	KO-STS1	STS6-P7	STS6-P12	STS6-P14	STS6-S17	STS6-S18	STS6-S29
<i>PTS/STS</i>			9.16	3.17	11.55	22.04	5.73	52.02	17.42	44.71	2.99	2.46	0.01	0.01	6.67	0.08	0.01	0.00	0.00	0.01	0.02	0.01
<i>SctHMGR</i>								1.87	0.63	0.50										0.00	0.00	0.05
Total																				5.71*	7.79*	5.40*
<i>PpHMGR</i>																						
Native	1.00	1.68	1.49	4.20*	2.74	3.34	3.01	5.97*	6.16*	6.16*	0.77	2.21	1.65	3.73	4.53*	2.07	2.51*	2.98*	3.21*	1.90	2.27	2.62
<i>PpHMGR</i>																						

Actin was used as reference gene. The primers used for the qPCR is found in Table S3. *Indicates where the mutant is significantly different from the background line based on a student t-test.

for sesquiterpenoid production. This was also done in yeast for sesquiterpenoid production using an inducible promoter (Ro et al., 2006).

The *CPS/KS* gene is the only terpene synthase gene in *P. patens* and catalyzes the first committed step in gibberellin biosynthesis converting GGPP to the precursor of gibberellins *ent-kaur-16-ene* (Hayashi et al., 2006; Zhan et al., in press). Thus, knockout of *CPS/KS* could lead to redirection of carbon flux toward the desired products since cross-talk between plastid and cytosol has been observed previously (Vranova et al., 2013). However, the yield of patchouli, α - and β -santalene was not increased in any of the obtained knockout lines. The down-regulation of *PTS* itself could contribute to the reduced yield of patchouli in *PTS35-KO*. However, the biosynthesis of stigmasterol was also decreased in *KO* lines, indicating occurrence of unknown regulatory events. Likewise, there are some indications that *KO* lines grow slower, though this needs further investigations.

Plastidic targeting of the sesquiterpenoid synthase is a unique metabolic engineering approach used in plants and has proved to be an effective strategy to increase patchouli production in *N. tabacum* (Wu et al., 2006). Plastidic targeting of the *PTS* enzyme in *P. patens* did not afford higher yields, but significantly lower yields of patchouli without the co-expression of an *FPS* enzyme. The limited *FPP* pool in the plastids of *P. patens* could be the reason for the lower yield. In order to compare the yield increase obtained in tobacco (40,000 fold) *FPS* would have to be targeted to the plastids as well. The little production of patchouli in the plastidic *PTS* lines without a plastidic *FPS* do suggest that *FPP* is present endogenously in the plastids. *FPP* can be either formed by the incomplete condensation of *IPP* and *DMAPP* by *GGPS*, or transported from the moss cytosol (Hemmerlin et al., 2003; Laule et al., 2003; Hampel et al., 2005). In contrast to the plastid targeted *PTS*, *P. patens* with plastid targeted *STS* (*WT-tpSTS1*) showed a significant increase in α/β -santalene. The analysis of transcripts for *HMGR* and *STS* in this line showed that these genes were higher expressed (*STS* more than 1000-fold) than in the cytosolic *STS* lines, which cannot only be explained with the use of actin as reference gene. The higher expression resulted in the increased yields of α - and β -santalene from non-detectable level to 0.039 and 0.035 mg/g d.w. in *P. patens*.

An emission of monoterpenoids was observed in both the plastidic *PTS* and *STS* lines, showing that both enzymes are capable of utilizing geranyl pyrophosphate (*GPP*) as a substrate for enzymatic conversion. This is the first time that the *PTS* enzyme is reported to be capable of utilizing *GPP* to produce monoterpenoids in a plant host, whereas this functionality of the *STS* enzyme was previously reported in *in vitro* assays (Jones et al., 2011). The monoterpene profile observed here is clearly different from this publication indicating the different *STS* enzymatic properties toward *GPP* when studied *in vitro* or *in planta*. Further studies are needed to study the monoterpene functionality of the two sesquiterpene synthases.

Productivity of sesquiterpenoids in the transgenic *PTS/STS* lines is vital for the viability of *P. patens* as an industrial production platform. In our work, the moss lines were growing in shake flask condition and the biomass was accumulated from around

0.2 to 1 g/L d.w. in the liquid culture after 14 days, which was about 1/3 to 1/5 of the biomass titer obtained in an optimized bioreactor (Cerff and Posten, 2012). The highest productivity of patchouli and α/β -santalene in our work was about 1.3 and 0.039 mg/g d.w. in 14 days, which is still too low for commercialization. However, there is a huge potential to use the rest of the endogenous isopentenyl pool to produce the desired products using metabolite engineering, as previously demonstrated in yeast. Likewise, biomass accumulation through cultivation process optimization will also add to benefits of the moss *P. patens* as a production platform. In conclusion, the obtained results are promising for future development of *P. patens* as a biotechnological production host, and the capacity of the cells has not yet been reached.

ACKNOWLEDGMENTS

This work was supported by The Faculty of Science, University of Copenhagen with the PhD stipend for Xin Zhan and the Danish Strategic Research Council Grant to Henrik Toft Simonsen. The authors wish thank Dr. Michel Schalk from Firmenich for providing the patchouli and α/β -santalene synthase genes, the authentic standards and the *pBDON* vector; Yong-Liang Tang and Dr. Lei Han are also thanked for the technical support on GC-MS and HPLC for metabolites analysis. Dr. Brian C. King from University of Copenhagen is thanked for his fruitful suggestions and discussions throughout the work.

SUPPLEMENTARY MATERIAL

The Supplementary Material for this article can be found online at: <http://www.frontiersin.org/journal/10.3389/fpls.2014.00636/abstract>

REFERENCES

- Anterola, A., Shanle, E., Perroud, P. F., and Quatrano, R. (2009). Production of taxa-4(5),11(12)-diene by transgenic *Physcomitrella patens*. *Transgenic Res.* 18, 655–660. doi: 10.1007/s11248-009-9252-5
- Asadollahi, M. A., Maury, J., Patil, K. R., Schalk, M., Clark, A., and Nielsen, J. (2009). Enhancing sesquiterpene production in *Saccharomyces cerevisiae* through *in silico* driven metabolic engineering. *Metab. Eng.* 11, 328–334. doi: 10.1016/j.ymben.2009.07.001
- Asadollahi, M. A., Maury, J., Schalk, M., Clark, A., and Nielsen, J. (2010). Enhancement of farnesyl diphosphate pool as direct precursor of sesquiterpenes through metabolic engineering of the mevalonate pathway in *Saccharomyces cerevisiae*. *Biotechnol. Bioeng.* 106, 86–96. doi: 10.1002/bit.22668
- Bach, S. S., King, B. C., Zhan, X., Simonsen, H. T., and Hamberger, B. (2014). “Heterologous stable expression of terpenoid biosynthetic genes using the moss *Physcomitrella patens*,” in *Plant Isoprenoids* ed. M. Rodríguez-Concepción (New York, NY: Springer), 257–271.
- Berger, R. G. (2007). *Flavours and Fragrances Chemistry, Bioprocessing and Sustainability*. Heidelberg: Springer.
- Cerff, M., and Posten, C. (2012). Relationship between light intensity and morphology of the moss *Physcomitrella patens* in a draft tube photo bioreactor. *Biochem. Eng. J.* 60, 119–126. doi: 10.1016/j.bej.2011.10.012
- Chappell, J., Wolf, F., Proulx, J., Cuellar, R., and Saunders, C. (1995). Is the reaction catalyzed by 3-hydroxy-3-methylglutaryl coenzyme-a reductase a rate-limiting step for isoprenoid biosynthesis in plants. *Plant Physiol.* 109, 1337–1343.
- Cove, D. J., Perroud, P. F., Charron, A. J., McDaniel, S. F., Khandelwal, A., and Quatrano, R. S. (2009). The moss *Physcomitrella patens*: a novel model system for plant development and genomic studies. *Cold Spring Harb. Protoc.* 2009:pdb.emo115. doi: 10.1101/pdb.emo115
- Cragg, G. M., Kingston, D. G. I., and Newman, D. J. (2011). *Anticancer Agents from Natural Products*. Boca Raton, FL: CRC Press.

- Daviet, J., and Schalk, M. (2010). Biotechnology in plant essential oil production: progress and perspective in metabolic engineering of the terpene pathway. *Flavour Frag. J.* 25, 123–127. doi: 10.1002/ffj.1981
- Deguerry, F., Pastore, L., Wu, S. Q., Clark, A., Chappell, J., and Schalk, M. (2006). The diverse sesquiterpene profile of patchouli, *Pogostemon cablin*, is correlated with a limited number of sesquiterpene synthases. *Arch. Biochem. Biophys.* 454, 123–136. doi: 10.1016/j.abb.2006.08.006
- Diaz-Chavez, M. L., Moniodis, J., Madilao, L. L., Jancsik, S., Keeling, C. I., Barbour, E. L., et al. (2013). Biosynthesis of sandalwood oil: *Santalum album* CYP76F cytochromes P450 produce santalols and bergamotol. *PLoS ONE* 8:e75053. doi: 10.1371/journal.pone.0075053
- Drew, D. P., Rasmussen, S. K., Avato, P., and Simonsen, H. T. (2012). A comparison of headspace solid-phase microextraction and classic hydrodistillation for the identification of volatile constituents from *Thapsia* spp. provides insights into guaianolide biosynthesis in Apiaceae. *Phytochem. Anal.* 23, 44–51. doi: 10.1002/pca.1323
- Hampel, D., Mosandl, A., and Wust, M. (2005). Biosynthesis of mono- and sesquiterpenes in carrot roots and leaves (*Daucus carota* L.): metabolic cross talk of cytosolic mevalonate and plastidial methylerythritol phosphate pathways. *Phytochemistry* 66, 305–311. doi: 10.1016/j.phytochem.2004.12.010
- Hayashi, K.-I., Horie, K., Hiwataishi, Y., Kawaide, H., Yamaguchi, S., Hanada, A., et al. (2010). Endogenous diterpenes derived from ent-kaurene, a common gibberellin precursor, regulate protonema differentiation of the moss *Physcomitrella patens*. *Plant Physiol.* 153, 1085–1097. doi: 10.1104/pp.110.157909
- Hayashi, K., Kawaide, H., Notomi, M., Sakigi, Y., Matsuo, A., and Nozaki, H. (2006). Identification and functional analysis of bifunctional ent-kaurene synthase from the moss *Physcomitrella patens*. *FEBS Lett.* 580, 6175–6181. doi: 10.1016/j.febslet.2006.10.018
- Hemmerlin, A., Hoeffler, J. F., Meyer, O., Tritsch, D., Kagan, I. A., Grosdemange-Billiard, C., et al. (2003). Cross-talk between the cytosolic mevalonate and the plastidial methylerythritol phosphate pathways in tobacco bright yellow-2 cells. *J. Biol. Chem.* 278, 26666–26676. doi: 10.1074/jbc.M302526200
- Jones, C. G., Moniodis, J., Zulak, K. G., Scaffidi, A., Plummer, J. A., Ghisalberti, E. L., et al. (2011). Sandalwood fragrance biosynthesis involves sesquiterpene synthases of both the terpene synthase (TPS)-a and TPS-b subfamilies, including santalene synthases. *J. Biol. Chem.* 286, 17445–17454. doi: 10.1074/jbc.M111.231787
- Laule, O., Furholz, A., Chang, H. S., Zhu, T., Wang, X., Heifetz, P. B., et al. (2003). Crosstalk between cytosolic and plastidial pathways of isoprenoid biosynthesis in *Arabidopsis thaliana*. *Proc. Natl. Acad. Sci. U.S.A.* 100, 6866–6871. doi: 10.1073/pnas.1031755100
- Livak, K. J., and Schmittgen, T. D. (2001). Analysis of relative gene expression data using real-time quantitative PCR and the 2^{-ΔΔC_T} method. *Methods* 25, 402–408. doi: 10.1006/meth.2001.1262
- Morikawa, T., Saga, H., Hashizume, H., and Ohta, D. (2009). CYP710A genes encoding sterol C22-desaturase in *Physcomitrella patens* as molecular evidence for the evolutionary conservation of a sterol biosynthetic pathway in plants. *Planta* 229, 1311–1322. doi: 10.1007/s00425-009-0916-4
- Nørholm, M. H. H. (2010). A mutant Pfu DNA polymerase designed for advanced uracil-excision DNA engineering. *BMC Biotechnol.* 10:21. doi: 10.1186/1472-6750-10-21
- Nour-Eldin, H. H., Geu-Flores, F., and Halkier, B. A. (2010). USER cloning and USER fusion: the ideal cloning techniques for small and big laboratories. *Methods Mol. Biol.* 643, 185–200. doi: 10.1007/978-1-60761-723-5_13
- Nour-Eldin, H. H., Hansen, B. G., Nørholm, M. H., Jensen, J. K., and Halkier, B. A. (2006). Advancing uracil-excision based cloning towards an ideal technique for cloning PCR fragments. *Nucleic Acids Res.* 34, e122. doi: 10.1093/nar/gkl635
- Paddon, C. J., Westfall, P. J., Pitera, D. J., Benjamin, K., Fisher, K., McPhee, D., et al. (2013). High-level semi-synthetic production of the potent antimalarial artemisinin. *Nature* 496, 528–532. doi: 10.1038/nature12051
- Pan, X.-W., Han, L., Zhang, Y.-H., Chen, D.-F., and Simonsen, H. T. (in press). Biotechnological production of sclareol in the moss *Physcomitrella patens*. *Front. Plant Sci.*
- Ro, D. K., Ouellet, M., Paradise, E. M., Burd, H., Eng, D., Paddon, C. J., et al. (2008). Induction of multiple pleiotropic drug resistance genes in yeast engineered to produce an increased level of anti-malarial drug precursor, artemisinic acid. *BMC Biotechnol.* 8:83. doi: 10.1186/1472-6750-8-83
- Ro, D. K., Paradise, E. M., Ouellet, M., Fisher, K. J., Newman, K. L., Ndungu, J. M., et al. (2006). Production of the antimalarial drug precursor artemisinic acid in engineered yeast. *Nature* 440, 940–943. doi: 10.1038/nature04640
- Scalcinati, G., Partow, S., Siewers, V., Schalk, M., Daviet, L., and Nielsen, J. (2012). Combined metabolic engineering of precursor and co-factor supply to increase alpha-santalene production by *Saccharomyces cerevisiae*. *Microb. Cell Fact.* 11, 117. doi: 10.1186/1475-2859-11-117
- Simonsen, H. T., Drew, D. P., and Lunde, C. (2009a). Perspectives on using *Physcomitrella patens* as an alternative production platform for thapsigargin and other terpenoid drug candidates. *Perspect. Medicin. Chem.* 3, 1–6.
- Simonsen, H. T., Riedel, C., Gade, L. B., Jebjerg, C. P., Guzman, A., and Mølgaard, P. (2009b). Chemical composition and antibacterial activity of the leaf essential oil of *Baccharis magellanica* (Lam.) Pers. and *Baccharis elaeoides* Remy from Chile. *J. Essent. Oil Res.* 21, 377–380. doi: 10.1080/10412905.2009.9700196
- Simonsen, H. T., Weitzel, C., and Christensen, S. B. (2013). “Guaianolide sesquiterpenoids - their pharmacology and biosynthesis,” in *Handbook of Natural Products - Phytochemistry, Botany and Metabolism of Alkaloids, Phenolics and Terpenes*, eds K. G. Ramawat and J. M. Merillon (Berlin: Springer-Verlag), 3069–3098.
- Stenøien, H. K. (2004). Adaptive basis of codon usage in the haploid moss *Physcomitrella patens*. *Heredity* 94, 87–93. doi: 10.1038/sj.hdy.6800547
- Stenøien, H. K. (2007). Compact genes are highly expressed in the moss *Physcomitrella patens*. *J. Evol. Biol.* 20, 1223–1229. doi: 10.1111/j.1420-9101.2007.01301.x
- Von Schwartzberg, K., Schultze, W., and Kassner, H. (2004). The moss *Physcomitrella patens* releases a tetracyclic diterpene. *Plant Cell Rep.* 22, 780–786. doi: 10.1007/s00299-004-0754-6
- Vranova, E., Coman, D., and Grisseum, W. (2013). Network analysis of the MVA and MEP pathways for isoprenoid synthesis. *Annu. Rev. Plant Biol.* 64, 665–700. doi: 10.1146/annurev-arplant-050312-120116
- Weitzel, C., and Simonsen, H. (2013). Cytochrome P450-enzymes involved in the biosynthesis of mono- and sesquiterpenes. *Phytochem. Rev.* 1–18. doi: 10.1007/s11101-013-9280-x
- Wu, S., Schalk, M., Clark, A., Miles, R. B., Coates, R., and Chappell, J. (2006). Redirection of cytosolic or plastidic isoprenoid precursors elevates terpene production in plants. *Nat. Biotechnol.* 24, 1441–1447. doi: 10.1038/nbt1251
- Zhan, X., Bach, S. S., Lunde, C., King, B. C., and Simonsen, H. T. (in press). Three additional diterpenes from *Physcomitrella patens* synthesized by copalyl diphosphate/kaurene synthase (PpCPS/KS). *Phytochemistry*.
- Zwenger, S., and Basu, C. (2008). Plant terpenoids: applications and future potentials. *Biotechn. Mol. Biol. Rev.* 3, 1–7.

Conflict of Interest Statement: The authors declare that the research was conducted in the absence of any commercial or financial relationships that could be construed as a potential conflict of interest.

Received: 15 September 2014; accepted: 27 October 2014; published online: 18 November 2014.

Citation: Zhan X, Zhang Y-H, Chen D-F and Simonsen HT (2014) Metabolic engineering of the moss *Physcomitrella patens* to produce the sesquiterpenoids patchoulol and α/β -santalene. *Front. Plant Sci.* 5:636. doi: 10.3389/fpls.2014.00636
This article was submitted to *Plant Biotechnology*, a section of the journal *Frontiers in Plant Science*.

Copyright © 2014 Zhan, Zhang, Chen and Simonsen. This is an open-access article distributed under the terms of the Creative Commons Attribution License (CC BY). The use, distribution or reproduction in other forums is permitted, provided the original author(s) or licensor are credited and that the original publication in this journal is cited, in accordance with accepted academic practice. No use, distribution or reproduction is permitted which does not comply with these terms.