



OPEN ACCESS

EDITED BY

Juan Pablo Martinez,
University of Zaragoza, Spain

REVIEWED BY

Raimondo Calvanese,
Centro Sanitario Locale Napoli 1 Centro, Italy
Rafat Gardas,
Medical University of Silesia, Poland

*CORRESPONDENCE

Ying-Xue Dong,
dong_yingxue@126.com

†These authors have contributed equally to
this work

RECEIVED 22 September 2024

ACCEPTED 19 November 2024

PUBLISHED 02 December 2024

CITATION

Chen Y, Ma Z-L, Liu F, Wang N, Ma Y-Y,
Guan Z-A, Zhe Z-C, Xia Y-L and Dong Y-X
(2024) Is conduction system pacing more
effective than right ventricular pacing in
reducing atrial high-rate episodes in patients
with heart failure and preserved ejection
fraction?
Front. Physiol. 15:1500159.
doi: 10.3389/fphys.2024.1500159

COPYRIGHT

© 2024 Chen, Ma, Liu, Wang, Ma, Guan, Zhe, Xia
and Dong. This is an open-access article
distributed under the terms of the [Creative
Commons Attribution License \(CC BY\)](#). The use,
distribution or reproduction in other forums is
permitted, provided the original author(s) and
the copyright owner(s) are credited and that the
original publication in this journal is cited, in
accordance with accepted academic practice.
No use, distribution or reproduction is
permitted which does not comply with these
terms.

Is conduction system pacing more effective than right ventricular pacing in reducing atrial high-rate episodes in patients with heart failure and preserved ejection fraction?

Ying Chen[†], Zhu-Lin Ma[†], Fei Liu, Nan Wang, Yue-Yang Ma, Zi-An Guan, Zhuang-Chuan Zhe, Yun-Long Xia and Ying-Xue Dong*

Department of Cardiology, First Affiliated Hospital of Dalian Medical University, Dalian, China

Background: The relationship between conduction system pacing (CSP) and the incidence of atrial fibrillation (AF) in patients with heart failure and preserved ejection fraction (HFpEF) remains uncertain. This study aims to investigate the occurrence of atrial high-rate episodes (AHREs) following CSP in patients with HFpEF, in comparison to right ventricular pacing (RVP).

Methods: Patients with HFpEF who received dual-chamber pacemakers for atrioventricular block were retrospectively enrolled from January 2018 to January 2023. Both new-onset and progressive AHREs were recorded, along with other clinical data, including cardiac performance and lead outcomes.

Results: A total of 498 patients were enrolled, comprising 387 patients with RVP and 111 patients with CSP, with a follow-up duration of 44.42 ± 10.41 months. In patients without a prior history of AF, CSP was associated with a significantly lower incidence of new-onset AHREs when the percentage of ventricular pacing was $\geq 20\%$ (9.52% vs. 29.70%, $P = 0.001$). After adjusting for confounding factors, CSP exhibited a lower hazard ratio for new-onset AHREs compared to RVP (HR 0.336; [95% CI: 0.142–0.795]; $P = 0.013$), alongside left atrial diameter (LAD) (HR 1.109; [95% CI: 1.048–1.173]; $P < 0.001$). In patients with a history of AF, the progression of AHREs in CSP and RVP did not differ significantly (32.35% vs. 34.75%, $P = 0.791$). Cardiac performance metrics, including left ventricular end-diastolic diameter (LVEDD) (49.09 ± 4.28 mm vs. 48.08 ± 4.72 mm; $P = 0.015$), LAD (40.68 ± 5.49 mm vs. 39.47 ± 5.24 mm; $P = 0.001$), and NYHA class (2.31 ± 0.46 vs. 1.59 ± 0.73 ; $P < 0.001$), improved obviously following CSP, while LVEDD (48.37 ± 4.57 mm vs. 49.30 ± 5.32 mm; $P < 0.001$), LAD (39.77 ± 4.58 mm vs. 40.83 ± 4.80 mm; $P < 0.001$), NYHA class (2.24 ± 0.43 vs. 2.35 ± 0.83 ; $P = 0.018$), and left ventricular ejection fraction (LVEF) (57.41 ± 2.42 vs. 54.24 ± 6.65 ; $P < 0.001$) deteriorated after RVP.

Conclusion: Our findings suggest that CSP may be associated with improvements in cardiac performance and a reduction in new-onset AHREs compared to RVP in patients with HFpEF. However, prospective randomized trials are anticipated to confirm these potential benefits.

KEYWORDS

conduction system pacing, right ventricular pacing, atrial high-rate episodes, atrial fibrillation, heart failure with preserved ejection fraction

Introduction

Atrial fibrillation (AF) is prevalent among patients with heart failure with preserved ejection fraction (HFpEF), with prevalence rate ranging from 15% to 41%, this condition is associated with an increased risk of hospitalization and elevated mortality rates (Gierula et al., 2022; Sartipy et al., 2019). Unfortunately, right ventricular pacing (RVP) has been shown to exacerbate the heart failure and increase occurrence of AF in patients with a high percentage of ventricular pacing, as demonstrated in previous randomized controlled trials (Sweeney et al., 2003; Sweeney et al., 2007).

Conduction system pacing (CSP) has emerged as a more physiological pacing modality that facilitates cardiac electrical resynchronization compared to RVP. Recent data indicated that both his bundle pacing (HBP) and left bundle branch pacing (LBBP) were associated with a lower incidence of new-onset AF compared to RVP (Ravi et al., 2020; Zhu et al., 2023). Atrial high-rate episodes (AHREs) can be continuously monitored by implanted cardiac devices, are strongly linked to the development of clinical AF and stroke (Toennis et al., 2023; Gonzalez et al., 2014). However, it remains unclear whether CSP would reduce the occurrence of AHREs in patients with HFpEF. This study aims to illustrate the incidence of new-onset AHREs and progressive AF following different pacing modalities in patients with HFpEF, while also exploring improvements in cardiac performance.

Methods

Patient enrollment

Patients with HFpEF who had indications for a dual-chamber pacemaker due to atrioventricular conduction block (AVB) were retrospectively and consecutively enrolled at our center from January 2018 to January 2023. Exclusion criteria included atrial lead rupture or unreliable atrial signal detection, loss to follow-up, severe valvular disease (mitral or aortic regurgitation/stenosis of severe grade), heart surgery within the 6 months prior to implantation, a known history of persistent or permanent AF, a history of an atrioventricular node ablation and device upgrades or generator replacements.

Pacemaker implantation procedure

CSP was performed using lead 3,830 (Medtronic, Minneapolis, MN). His bundle electrogram and left bundle branch electrogram were recorded in a unipolar configuration (Prucka Cardiolab, GE Healthcare, Waukesha, WI, United States). HBP was not considered if

1:1 His–ventricular conduction was not detected while pacing at a rate of 120 beats per minute or patients with infranodal AVB. The unipolar configuration and pacing impedance were monitored alongside the left ventricular activation time (LVAT) (Zhang et al., 2023). Stim-left ventricular active time (LVAT) less than 75 ms, an abrupt decrease in LVAT of longer than 10 ms and the morphologies of Qr, qR, or rSR' in lead V₁ were the simple criteria for left bundle branch capture.

Data collection and patients follow-up

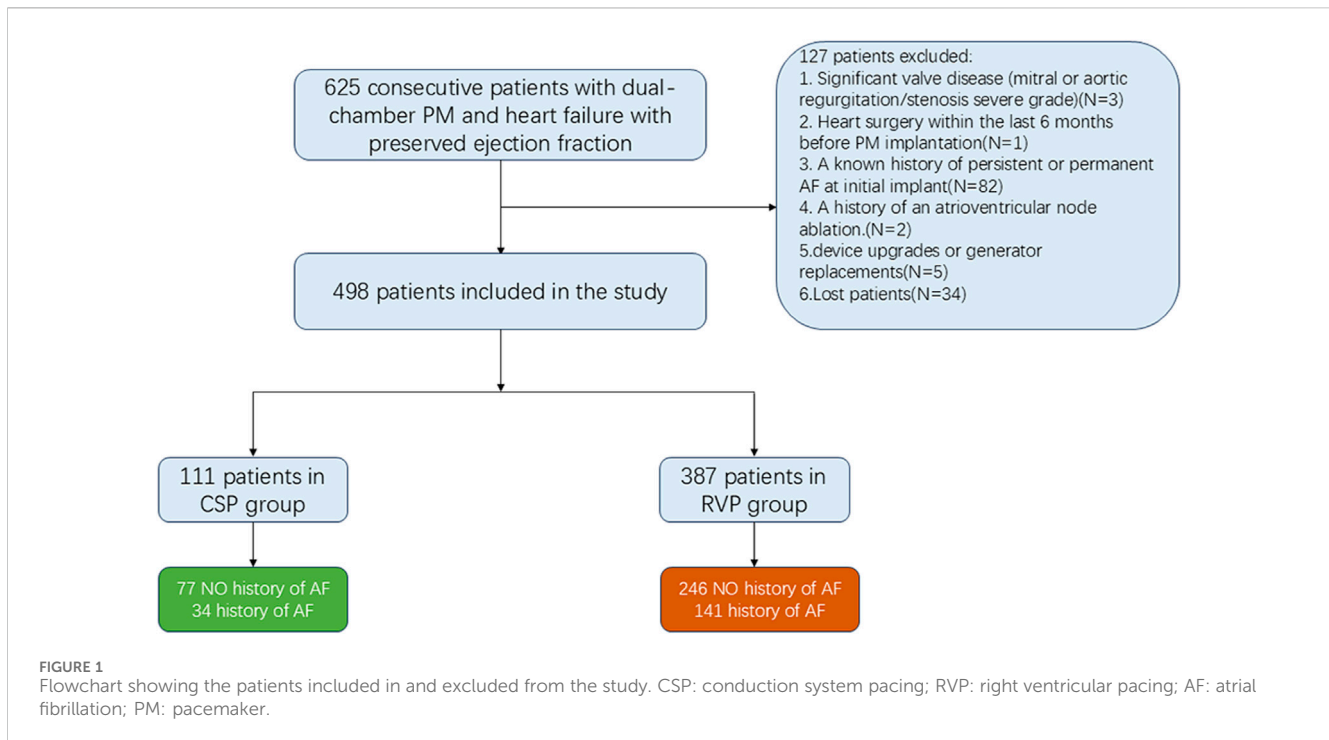
All patients were followed up at 1, 3, 6, and then every 6 months after the procedure. The 12-lead ECG, atrial high-rate episode burden (AHREs), echocardiographic parameters, comorbidities, and medications were documented. The pacing percentage and AHREs were noted at the initial 1-month visit and at each subsequent device interrogation, including remote interrogations. Anticoagulation therapy was recommended according to the guidelines established. The sizes of the left ventricle (LV) and left atrium (LA), as well as cardiac function, were monitored annually via cardiac ultrasound (video, GE Healthcare). The left ventricular ejection fraction (LVEF) was calculated using the modified Simpson method. The incidence of progressive AF and new-onset AHREs was noted and compared between the CSP and RVP pacing modalities.

Definitions and criteria

AHREs were defined as episodes characterized by an atrial rate of 200 beats per minute or greater, lasting for a minimum of 5 min. The burden of AHREs was quantified as the average percentage of total AHREs occurring throughout the entire follow-up period (Healey et al., 2012). New-onset AHREs were identified as those detected in patients without a prior history of AF before the procedure (Kohno et al., 2011; Minamiguchi et al., 2012). Atrial fibrillation progression was defined as an absolute increase of 10% or more in the average AHREs burden compared to the initial assessment conducted 1 month after device implantation (Ravi et al., 2020). HFpEF was characterized by objective evidence of cardiac structural and/or functional abnormalities indicative of left ventricular (LV) diastolic dysfunction or elevated LV filling pressures, including elevated levels of natriuretic peptides (McDonagh et al., 2021).

Statistical analysis

Continuous variables exhibiting a normal distribution were reported as mean ± standard deviation and analyzed using a



t-test. For non-normally distributed variables, data were expressed as medians with interquartile ranges, and the Mann-Whitney U test was employed. Categorical variables were compared using either the Chi-square test or Fisher's exact test, with results reported as percentages. Survival curves were estimated using the Kaplan–Meier method. Univariate and multivariable Cox proportional hazard models were utilized to identify predictors of AHREs, where univariate predictors with a P value of less than 0.05 were incorporated into the multivariate Cox proportional hazard model. All statistical analyses were performed using SPSS Version 26.0, with a significance threshold set at $P < 0.05$.

Results

Patient population characteristics

A total of 625 patients (mean age 73.21 ± 10.00 years; 45.4% male) diagnosed with HFpEF and implanted with dual-chamber pacemakers for AVB were continuously screened from January 2018 to January 2023. Out of these, 498 patients (387 with RVP and 111 with CSP) were enrolled, as illustrated in [Figure 1](#). Among the CSP group, 21 patients (18.92%) received HBP and 90 patients (81.08%) received LBPP. The average follow-up duration was 44.42 ± 10.41 months.

The baseline clinical characteristics of the study population are detailed in [Table 1](#). No statistically significant differences were observed in age, gender, comorbidities, medication usage, left ventricular end-diastolic diameter (LVEDD), left atrial diameter (LAD), left ventricular ejection fraction (LVEF), or New York Heart Association (NYHA) class between the patients receiving CSP and those receiving RVP (all $P > 0.05$).

Procedure outcomes in different pacing modalities

The paced QRS duration was significantly shorter in CSP compared to RVP (116.86 ± 23.75 ms vs. 144.53 ± 32.00 ms, $P < 0.001$). The capture threshold was higher in the CSP than in RVP (1.05 ± 0.31 V vs. 0.83 ± 0.18 V, $P < 0.001$). An increase in capture threshold of ≥ 2 V at 0.4 ms was observed in 4 patients with CSP and 2 patients with RVP (3.60% vs. 0.52%, $P = 0.033$). The incidence of procedural complications was similar between the CSP and RVP groups (0.90% vs. 0.26%, $P = 0.926$). Details of the procedures were shown in [Table 2](#).

Clinical outcomes in different pacing modalities

Clinical outcomes in different pacing modalities demonstrated significant differences. Patients with RVP experienced deterioration in NYHA class (2.24 ± 0.43 vs. 2.35 ± 0.83 , $P = 0.018$), LVEDD (48.37 ± 4.57 mm vs. 49.30 ± 5.32 mm, $P < 0.001$), LAD (39.77 ± 4.58 mm vs. 40.83 ± 4.80 mm, $P < 0.001$), and LVEF ($57.41\% \pm 2.42\%$ vs. $54.24\% \pm 6.65\%$, $P < 0.001$) after follow-up. In contrast, patients with CSP showed improvement in NYHA class (2.31 ± 0.46 vs. 1.59 ± 0.73 , $P < 0.001$), LVEDD (49.09 ± 4.28 mm vs. 48.08 ± 4.72 mm, $P = 0.015$), and LAD (40.68 ± 5.49 mm vs. 39.47 ± 5.24 mm, $P = 0.001$), as illustrated in [Table 3](#).

New-onset AHREs in different pacing modalities

Regarding new-onset AHREs in different pacing modalities, 77 patients with CSP and 246 patients with RVP had no prior

TABLE 1 Baseline characteristics of all patients.

	Patients without history of AF			Patients with history of AF		
	CSP(N = 77)	RVP(N = 246)	P-Value	CSP(N = 34)	RVP(N = 141)	P-Value
Age, years	71.19 ± 9.96	73.81 ± 10.34	0.051	71.21 ± 7.19	74.06 ± 9.08	0.089
Male, n (%)	38 (49.35)	113 (45.93)	0.600	19 (55.88)	54 (38.30)	0.062
BMI, kg/m ²	30.72 ± 0.73	30.59 ± 1.71	0.350	27.73 ± 3.52	28.71 ± 3.84	0.184
NYHA class			0.079			0.638
NYHA II, n (%)	49 (63.64)	182 (73.98)		28 (82.35)	111 (78.72)	
NYHA III, n (%)	28 (36.36)	64 (26.02)		6 (17.65)	30 (21.28)	
SND	25 (32.47)	57 (23.17)	0.102	23 (67.65)	105 (74.47)	0.421
Hypertension, n (%)	69 (89.60)	218 (88.60)	0.809	29 (85.29)	115 (81.56)	0.609
CAD, n (%)	7 (9.09)	39 (15.85)	0.138	10 (29.41)	33 (23.40)	0.465
DM, n (%)	18 (23.38)	80 (32.52)	0.128	13 (38.24)	33 (23.40)	0.078
CKD, n (%)	4 (5.19)	22 (8.94)	0.291	5 (14.71)	6 (4.26)	0.063
LVEDD, mm	49.60 ± 4.62	48.88 ± 4.35	0.218	47.94 ± 3.10	47.46 ± 4.83	0.588
LAD, mm	40.15 ± 4.79	39.34 ± 4.14	0.158	41.91 ± 6.74	40.53 ± 5.20	0.198
LVEF, %	57.57 ± 2.01	57.50 ± 2.48	0.806	56.73 ± 2.48	57.27 ± 2.29	0.231
E/e'	17.73 ± 2.54	17.37 ± 2.17	0.221	18.21 ± 4.54	17.37 ± 2.75	0.171
ACEI/ARB/ARNI, n (%)	23 (29.87)	79 (32.11)	0.712	10 (29.41)	48 (34.04)	0.607
AAD, n (%)	6 (7.79)	20 (8.13)	0.924	6 (17.65)	22 (15.27)	0.770
AF ablation	—	—	—	3 (8.82)	20 (14.18)	0.584
BNP, pg/mL	188.00 (152.50,392.86)	227.00 (154.92,393.44)	0.533	201.23 (152.50,374.35)	233.35 (158.23,446.73)	0.612

BMI: body mass index; SND: sinus node disease; CAD: coronary artery disease; DM: diabetes mellitus; CKD: chronic kidney disease; LVEDD: left ventricular end-diastolic diameter; LAD: left atrial diameter; LVEF: left ventricular ejection fraction; ARNI: angiotensin receptor-neprilysin inhibitors; ACEI: angiotensin-converting enzyme inhibitors; ARB: angiotensin receptor blockers; AAD: antiarrhythmic drug; CSP: conduction system pacing; RVP: right ventricular pacing; AF: atrial fibrillation.

TABLE 2 Procedures and clinical outcomes.

	CSP (N = 111)	RVP (N = 387)	P-Value
Baseline QRS duration, ms	108.20 ± 27.57	107.84 ± 31.90	0.914
Paced QRS duration, ms	116.86 ± 23.75	144.53 ± 32.00	<0.001
Threshold, V	1.05 ± 0.31	0.83 ± 0.18	<0.001
Threshold increase ≥ 2 V, n (%)	4 (3.60)	2 (0.52)	0.033
Procedural complications	1 (0.90)	1 (0.26)	0.926
Pericardial effusion	0	0	
Pneumothorax	1	0	
Lead dislodgement	0	1	
Infection	0	0	
VP% ≥ 20%, n (%)	80 (72.07)	256 (66.15)	0.240

VP%: percentage of ventricular pacing; CSP: conduction system pacing; RVP: right ventricular pacing.

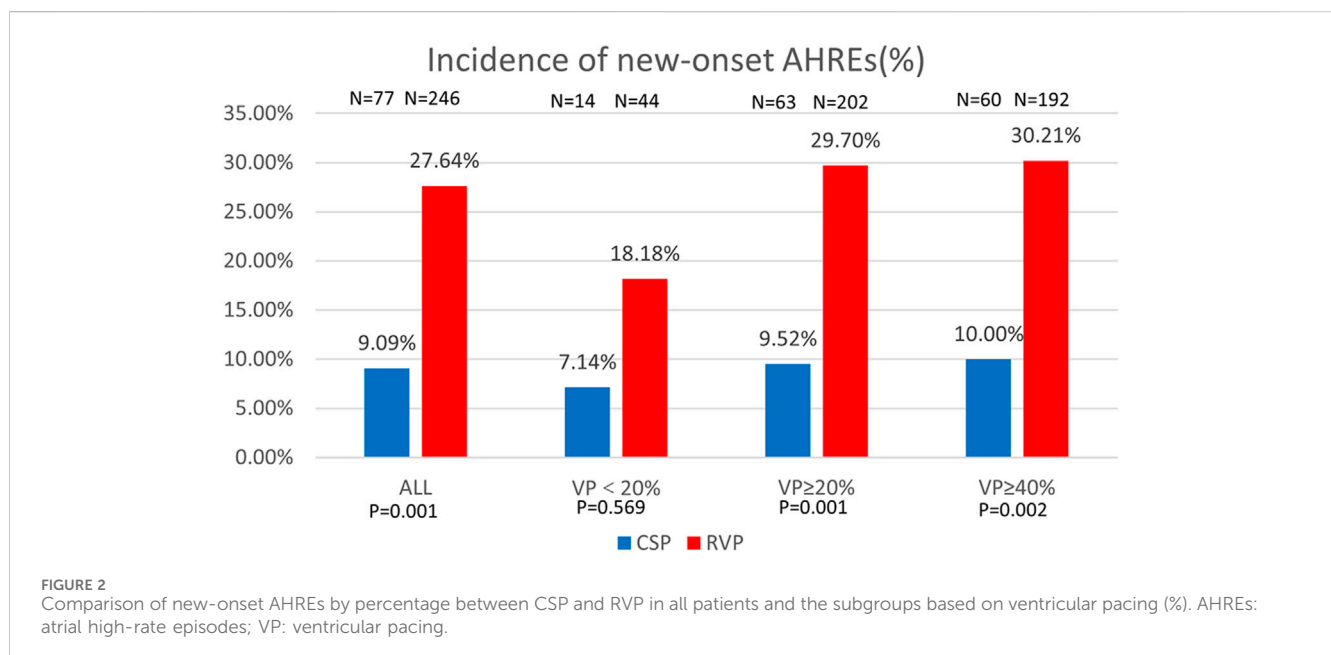
history of AF before the procedure. New-onset AHREs were identified in 7 patients (7/77, 9.09%) with CSP and 68 patients (68/246, 27.64%) with RVP ($P = 0.001$), as shown in Figure 2. CSP was associated with a significantly lower incidence of new-onset

AHREs compared to RVP, particularly in patients with a ventricular pacing percentage of ≥ 20% (9.52% vs. 29.70%, $P = 0.001$), while no significant difference was observed in those with a ventricular pacing percentage of less than 20%, as depicted in Figure 2. Univariate and

TABLE 3 Clinical outcomes comparison in different pacing modalities.

	Baseline	After follow-up	P-Value
NYHA class in CSP	2.31 ± 0.46	1.59 ± 0.73	<0.001
NYHA class in RVP	2.24 ± 0.43	2.35 ± 0.83	0.018
LAD in CSP, mm	40.68 ± 5.49	39.47 ± 5.24	0.001
LAD in RVP, mm	39.77 ± 4.58	40.83 ± 4.80	<0.001
LVEDD in CSP, mm	49.09 ± 4.28	48.08 ± 4.72	0.015
LVEDD in RVP, mm	48.37 ± 4.57	49.30 ± 5.32	<0.001
LVEF in CSP, %	57.32 ± 2.18	56.57 ± 4.96	0.121
LVEF in RVP, %	57.41 ± 2.42	54.24 ± 6.65	<0.001

LAD: left atrial diameter; LVEDD: left ventricular end-diastolic diameter; LVEF: left ventricular ejection fraction; CSP: conduction system pacing; RVP: right ventricular pacing.



multivariate Cox regression models were employed to identify predictors of new-onset AHREs, as presented in Table 4. CSP exhibited a lower hazard ratio for new-onset AHREs compared to RVP (HR 0.336; [95% CI: 0.142–0.795]; $P = 0.013$), as well as LAD (HR 1.109; [95% CI: 1.048–1.173]; $P < 0.001$). The cumulative risks of new-onset AHREs across different pacing modalities are illustrated in Figure 3.

Progression of AHREs in different pacing modalities

In terms of the progression of AF in different pacing modalities, 34 patients with CSP and 141 patients with RVP had paroxysmal AF prior to pacemaker implantation. Progression of AF occurred in 11 patients (11/34, 32.35%) with CSP and 49 patients (49/141, 34.75%) with RVP ($P = 0.791$). The progression of AF was comparable between CSP and RVP, regardless of the ventricular pacing percentage, as shown in Figure 4.

Discussion

Main findings

This study first demonstrates that CSP might be effective than RVP in improving cardiac performance and reducing AHREs in patients with HFpEF. Furthermore, it suggests CSP and LAD are independent predictors of new-onset AHREs.

Pacing modalities on cardiac performances in patients with HFpEF

Current randomized trials have demonstrated the superiority of biventricular pacing (BiVP) over RVP in enhancing quality of life, NYHA class, and echocardiographic outcomes in patients with moderate to severe systolic dysfunction (Filho et al., 2010; Curtis et al., 2013; Kindermann et al., 2006). However, the high

TABLE 4 Cox regression analysis for risk factors of new-onset AHREs in patients without history of AF.

	Patients with VP \geq 20%					
	Univariate analysis			Multivariate analysis		
	HR	95% CI	P-Value	HR	95% CI	P-Value
CSP	0.396	0.169–0.923	0.032	0.336	0.142–0.795	0.013
Age	1.018	0.993–1.044	0.156			
Male	1.245	0.768–2.018	0.374			
BMI	1.106	0.893–1.369	0.357			
SND	1.195	0.727–1.965	0.483			
Hypertension	0.794	0.415–1.520	0.487			
DM	0.867	0.505–1.491	0.607			
CAD	1.008	0.499–2.036	0.983			
AAD	2.494	0.998–6.233	0.050			
ACEI/ARB/ARNI	1.186	0.710–1.980	0.515			
LAD	1.091	1.036–1.150	0.001	1.109	1.048–1.173	<0.001
LVEDD	1.009	0.953–1.068	0.759			
LVEF	1.016	0.924–1.117	0.745			
AP%	1.005	0.993–1.018	0.409			

BMI: body mass index; SND: sinus node disease; DM: diabetes mellitus; CAD: coronary artery disease; AAD: antiarrhythmic drug; ACEI: angiotensin-converting enzyme inhibitors; ARB: angiotensin receptor blockers; ARNI: angiotensin receptor-neprilysin inhibitors; LAD: left atrial diameter; LVEDD: left ventricular end-diastolic diameter; LVEF: left ventricular ejection fraction; CSP: conduction system pacing; RVP: right ventricular pacing; AP%: percentage of atrial pacing; AHREs: atrial high-rate episodes.

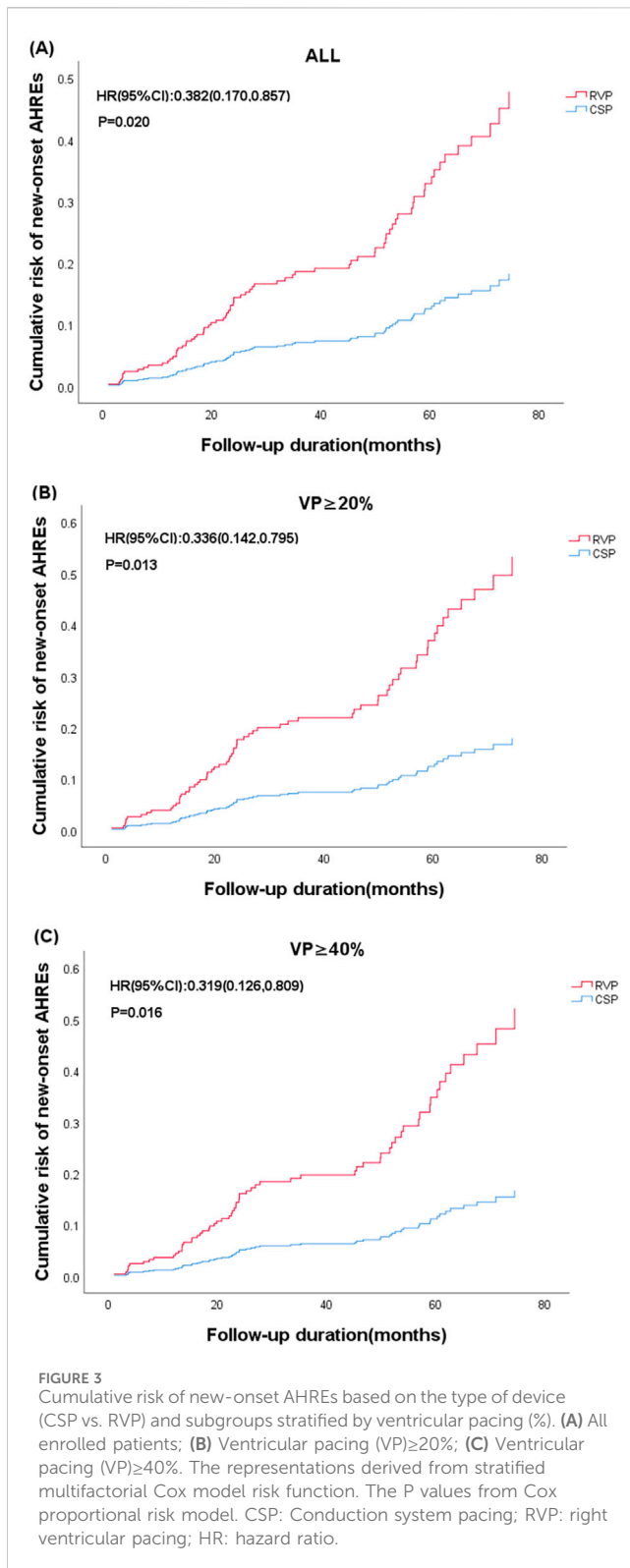
cost and limited response of BiVP rendered it inaccessible for some patients. Zhang et al. demonstrated that CSP significantly improve NYHA class, LVEF, and LVEDD in patients with HFmrEF and a high percentage of ventricular pacing (Zhang et al., 2023). HFpEF is characterized by increasing rates of hospitalization and mortality, highlighting the need for new therapeutic options (Infeld et al., 2023).

CSP has been recommended as an alternative to RVP in patients with AVB (Chung et al., 2023). Reports indicated that LBBP resulted in greater improvement in BNP levels compared to RVP (O et al., 2022). Moreover, HBP has been shown to improve NYHA class and reduce diuretic use in HFpEF patients after 1 year (Huang et al., 2017). However, data regarding the long-term impact of CSP on cardiac remodeling in HFpEF remained scarce. Consistent with previous studies, this research also demonstrated favorable cardiac function, including improvements in LVEF and NYHA class following CSP. Additionally, it explored the benefits of CSP on cardiac reverse remodeling, revealing significant improvements in LVEDD ($P = 0.015$) and LAD ($P = 0.001$) after long-term follow-up. In contrast, RVP was associated with deterioration in LVEDD ($P < 0.001$), LAD ($P < 0.001$), NYHA class ($P = 0.018$), and LVEF ($P < 0.001$). These positive outcomes might result from a combination of factors, and the individual atrioventricular interval optimization could play a role except for the physiological electrical conduction facilitated by CSP (Cobb and Gold, 2017).

Predictors of new-onset AHREs in patients with HFpEF

AF was prevalent among patients with a significant proportion of ventricular pacing (Sweeney et al., 2003). Recent studies have demonstrated that the incidence of AHREs in patients with RVP was approximately 2.3 times greater than those with LBBP (Takahashi et al., 2023; Zhang et al., 2024). In line with these observations, our analysis revealed that CSP was associated with a reduced incidence of AHREs (HR 0.336, 95% CI: 0.142–0.795) after adjusting for confounding variables using multifactorial regression analysis. Notably, the prevalence of AHREs was found to be as high as 29.70% in patients with RVP of VP% \geq 20%, compared to only 9.52% in those receiving CSP ($P = 0.001$).

Structural alterations in chronic heart failure patients, compounded by neurohormonal activation, significantly increased the prevalence of AF (Kotecha and Piccini, 2015). HFpEF was primarily characterized by left ventricular concentric remodeling, hypertrophy, and diastolic dysfunction (CS et al., 2007). Additionally, left atrial enlargement, along with cardiac volume and pressure overload, has been shown to correlate with the occurrence of AF (Hoit, 2014). Study has confirmed that left atrial enlargement is a significant risk factor for AHREs (Kim et al., 2021). However, this cohort study is the first to demonstrate that left atrial enlargement is associated with the development of AHREs in patients with HFpEF. In patients with HFpEF, left atrial enlargement served as a well-established proarrhythmic substrate associated with atrial



fibrosis (Knackstedt et al., 2008). Importantly, our findings explored that CSP contributed to left atrial remodeling (40.68 ± 5.49 vs. 39.47 ± 5.24 , $P = 0.001$) when compared to RVP (39.77 ± 4.58 vs. 40.83 ± 4.80 , $P < 0.001$), which might play a role in the prevention of AF.

Previous studies had demonstrated that the risks of ventricular desynchrony, adverse remodeling, and atrial arrhythmia increased

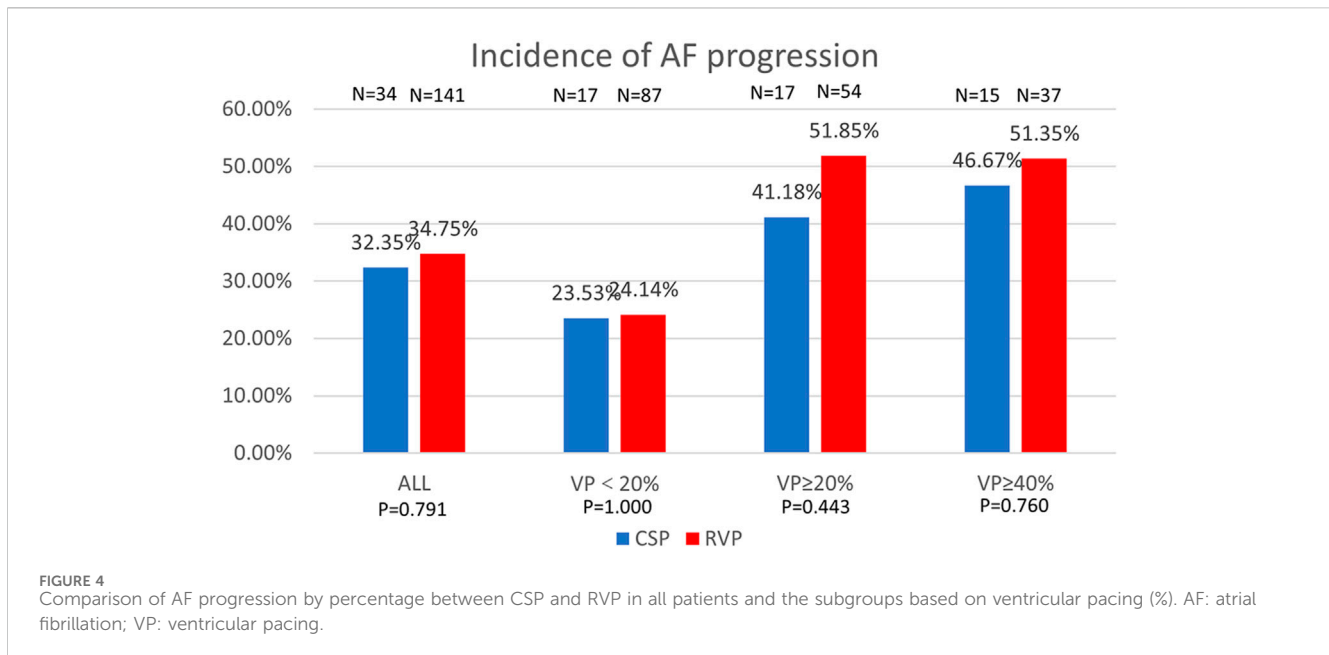
when the percentage of ventricular pacing exceeded 20%–40% (Sweeney et al., 2003; Ravi et al., 2020; Kiehl et al., 2016; Khurshid et al., 2014). Additionally, several studies had established a correlation between elevated atrial pacing percentages and an increased risk of atrial arrhythmias (Bukari et al., 2018; Fontenla et al., 2016; Biffi et al., 2019; Ziacchi et al., 2018). However, the population enrolled in this study primarily consisted of patients with atrioventricular block, and the atrial pacing percentages within this cohort limited its ability to predict the incidence of AHREs.

Different pacing modalities on AHREs in patients with HFpEF

Current data suggested that HBP was associated with a reduced risk of AHREs compared to RVP in patients without AF history (Takahashi et al., 2023). However, the extent to which the physiological advantages of CSP in preventing AHREs could be counterbalanced by the effects of heart failure in patients with HFpEF remains unclear. Our study first confirmed the benefits of CSP in reducing new-onset AHREs even among patients with HFpEF. However, in the patients with a prior history of AF, no statistically significant differences were observed in the progression of AHREs between CSP and RVP. Additionally, Pastore et al. found no difference in the progression of AF between HBP and RVP (Pastore et al., 2020). These findings underscore the necessity of early AF management and the importance of primary prevention. It was noteworthy that a higher proportion of patients with a history of AF in the RVP group had previously undergone AF ablation compared to those in the CSP group (14% vs. 8%). This disparity might diminish the potential benefits of CSP in reducing AF burden among patients who had already undergone ablation.

RVP-related diastolic dysfunction, asynchronous mitral regurgitation and enlarged left atrial expansion increased the risk of AF occurrence (Naqvi and Chao, 2023). CSP would be beneficial in reducing the incidence of AF by enhancing the cardiac electrical and mechanical synchronization, as well as delaying left atrial reverse remodeling (Cai et al., 2020; Hou et al., 2019). HFpEF was associated with progressive left atrial myopathy which served as the substrate of AF occurrence (Kotecha et al., 2016). Consequently AF recurrence was more prevalent in patients with HFpEF regardless of the type of AF (Younis et al., 2024). These findings suggested that managing AF in patients with concomitant heart failure presented significant challenges, particularly for those with a prior history of AF. Merely altering the pacing modality without addressing multiple risk factors is unlikely to effectively prevent AF recurrence. Therefore, the management of various risk factors associated with AF, such as diabetes mellitus, obesity, alcohol consumption, and sleep apnea syndrome, should be considered essential for the prevention of AF.

Although the age difference between the CSP and RVP did not reach statistical significance ($P = 0.051$), we agreed that younger patients generally present a lower risk of atrial arrhythmias. Notably, all enrolled patients in this study were elderly, which somewhat diminished the influence of age on the final results. And it was further demonstrated that age was not identified as a statistically significant factor associated with the incidence of AHREs in the univariate regression analyses ($P = 0.156$).



Limitations

This study was a single-center, retrospective observational analysis. Given the potential for selection bias associated with its non-randomized design, caution should be exercised when interpreting the results. A randomized multi-center trial with a larger sample size may be necessary to validate these findings.

Conclusion

Our findings suggest that CSP may be associated with improvements in cardiac performance and a reduction in new-onset AHREs compared to RVP in patients with HFpEF. However, prospective randomized trials are anticipated to confirm these potential benefits.

Data availability statement

The raw data supporting the conclusions of this article will be made available by the authors, without undue reservation.

Ethics statement

The studies involving humans were approved by Ethics Committee of the First Affiliated Hospital of Dalian Medical University. The studies were conducted in accordance with the local legislation and institutional requirements. Written informed consent for participation was not required from the participants or the participants' legal guardians/next of kin in accordance with the national legislation and institutional requirements.

Author contributions

YC: Conceptualization, Data curation, Formal Analysis, Investigation, Methodology, Software, Visualization, Writing—original draft. Z-LM: Data curation, Formal Analysis, Software, Writing—original draft. FL: Methodology, Writing—original draft. NW: Software, Writing—original draft. Y-YM: Data curation, Writing—original draft. Z-AG: Data curation, Writing—original draft. Z-CZ: Data curation, Writing—original draft. Y-LX: Resources, Writing—original draft. Y-XD: Data curation, Funding acquisition, Project administration, Resources, Supervision, Validation, Writing—review and editing.

Funding

The author(s) declare that financial support was received for the research, authorship, and/or publication of this article, supported by the Scientific and Technological Innovation Foundation of Dalian City (2024JJ12PT016).

Conflict of interest

The authors declare that the research was conducted in the absence of any commercial or financial relationships that could be construed as a potential conflict of interest.

Publisher's note

All claims expressed in this article are solely those of the authors and do not necessarily represent those of their affiliated organizations, or those of the publisher, the editors and the reviewers. Any product that may be evaluated in this article, or claim that may be made by its manufacturer, is not guaranteed or endorsed by the publisher.

References

- Biffi, M., D'Onofrio, A., Pignalberi, C., Pisanò, E. C., Iacopino, S., Curnis, A., et al. (2019). Rate-responsive pacing and atrial high rate episodes in cardiac resynchronization therapy patients: is low heart rate the key? *Clin. Cardiol.* 42 (9), 820–828. doi:10.1002/clc.23227
- Bukari, A., Wali, E., Deshmukh, A., Aziz, Z., Broman, M., Beaser, A., et al. (2018). Prevalence and predictors of atrial arrhythmias in patients with sinus node dysfunction and atrial pacing. *J. Interventional Cardiac Electrophysiol.* 53 (3), 365–371. doi:10.1007/s10840-018-0463-7
- Cai, B., Huang, X., Li, L., Guo, J., Chen, S., Meng, F., et al. (2020). Evaluation of cardiac synchrony in left bundle branch pacing: insights from echocardiographic research. *J. Cardiovasc. Electrophysiol.* 31 (2), 560–569. doi:10.1111/jce.14342
- Chung, M. K., Patton, K. K., Lau, C.-P., Dal Forno, A. R. J., Al-Khatib, S. M., Arora, V., et al. (2023). 2023 HRS/APHS/LAHS guideline on cardiac physiologic pacing for the avoidance and mitigation of heart failure. *Heart Rhythm.* 20 (9), e17–e91. doi:10.1016/j.hrthm.2023.03.1538
- Cobb, D. B., and Gold, M. R. (2017). The role of atrioventricular and interventricular optimization for cardiac resynchronization therapy. *Heart Fail. Clin.* 13 (1), 209–223. doi:10.1016/j.hfc.2016.07.017
- Cs, P., Lam, M., Rodeheffer, R. J., Bursi, F., Borlaug, B. A., Ommen, S. R., et al. (2007). Cardiac structure and ventricular-vascular function in persons with heart failure and preserved ejection fraction from Olmsted County, Minnesota. *Circulation* 115 (15), 1982–1990. doi:10.1161/CIRCULATIONAHA.106.659763
- Curtis, A. B., Worley, S. J., Adamson, P. B., Chung, E. S., Niazi, I., Sherfese, L., et al. (2013). Biventricular pacing for atrioventricular block and systolic dysfunction. *N. Engl. J. Med.* 368 (17), 1585–1593. doi:10.1056/NEJMoa1210356
- Filho, M. M., de Siqueira, S. F., Costa, R., Greco, O. T., Moreira, L. F., D'Avila, A., et al. (2010). Conventional versus biventricular pacing in heart failure and bradyarrhythmia: the COMBAT study. *J. Cardiac Fail.* 16 (4), 293–300. doi:10.1016/j.cardfail.2009.12.008
- Fontela, A., Salguero, R., Martinez-Ferrer, J. B., Rodriguez, A., Alzueta, J., Garcia, E., et al. (2016). Atrial rate-responsive pacing and incidence of sustained atrial arrhythmias in patients with implantable cardioverter defibrillators. *Pacing Clin. Electrophysiol.* 39 (6), 548–556. doi:10.1111/pace.12856
- Gierula, J., Cole, C. A., Drozd, M., Lowry, J. E., Straw, S., Slater, T. A., et al. (2022). Atrial fibrillation and risk of progressive heart failure in patients with preserved ejection fraction heart failure. *Esc. Heart Fail.* 9 (5), 3254–3263. doi:10.1002/ehf2.14004
- Gonzalez, M., Keating, R. J., Markowitz, S. M., Liu, C. F., Thomas, G., Ip, J. E., et al. (2014). Newly detected atrial high rate episodes predict long-term mortality outcomes in patients with permanent pacemakers. *Heart Rhythm.* 11 (12), 2214–2221. doi:10.1016/j.hrthm.2014.08.019
- Healey, J. S., Connolly, S. J., Gold, M. R., Israel, C. W., Van Gelder, I. C., Capucci, A., et al. (2012). Subclinical atrial fibrillation and the risk of stroke. *N. Engl. J. Med.* 366 (2), 120–129. doi:10.1056/NEJMoa1105575
- Hoit, B. D. (2014). Left atrial size and function: role in prognosis. *J. Am. Coll. Cardiol.* 63 (6), 493–505. doi:10.1016/j.jacc.2013.10.055
- Hou, X., Qian, Z., Wang, Y., Qiu, Y., Chen, X., Jiang, H., et al. (2019). Feasibility and cardiac synchrony of permanent left bundle branch pacing through the interventricular septum. *EP Eur.* 21 (11), 1694–1702. doi:10.1093/europace/euz188
- Huang, W., Su, L., Wu, S., Xu, L., Xiao, F., Zhou, X., et al. (2017). Benefits of permanent his bundle pacing combined with atrioventricular node ablation in atrial fibrillation patients with heart failure with both preserved and reduced left ventricular ejection fraction. *J. Am. Heart Assoc.* 6 (4), e005309. doi:10.1161/jaha.116.005309
- Infeld, M., Wahlberg, K., Cicero, J., Plante, T. B., Meagher, S., Novelli, A., et al. (2023). Effect of personalized accelerated pacing on quality of life, physical activity, and atrial fibrillation in patients with preclinical and overt heart failure with preserved ejection fraction: the myPACE randomized clinical trial. *JAMA Cardiol.* 8 (3), 213–221. doi:10.1001/jamacardio.2022.5320
- Khurshid, S., Epstein, A. E., Verdino, R. J., Lin, D., Goldberg, L. R., Marchlinski, F. E., et al. (2014). Incidence and predictors of right ventricular pacing-induced cardiomyopathy. *Heart Rhythm.* 11 (9), 1619–1625. doi:10.1016/j.hrthm.2014.05.040
- Kiehl, E. L., Makki, T., Kumar, R., Gumber, D., Kwon, D. H., Rickard, J. W., et al. (2016). Incidence and predictors of right ventricular pacing-induced cardiomyopathy in patients with complete atrioventricular block and preserved left ventricular systolic function. *Heart Rhythm.* 13 (12), 2272–2278. doi:10.1016/j.hrthm.2016.09.027
- Kim, M., Kim, T.-H., Yu, H. T., Choi, E. K., Park, H. S., Park, J., et al. (2021). Prevalence and predictors of clinically relevant atrial high-rate episodes in patients with cardiac implantable electronic devices. *Korean Circulation J.* 51 (3), 235–247. doi:10.4070/kcj.2020.0393
- Kindermann, M., Hennen, B., Jung, J., Geisel, J., Böhm, M., and Fröhlig, G. (2006). Biventricular versus conventional right ventricular stimulation for patients with standard pacing indication and left ventricular dysfunction: the Homburg Biventricular Pacing Evaluation (HOBIPACE). *J. Am. Coll. Cardiol.* 47 (10), 1927–1937. doi:10.1016/j.jacc.2005.12.056
- Knackstedt, C., Gramley, F., Schimpf, T., Mischke, K., Zarse, M., Plisiene, J., et al. (2008). Association of echocardiographic atrial size and atrial fibrosis in a sequential model of congestive heart failure and atrial fibrillation. *Cardiovasc. Pathol.* 17 (5), 318–324. doi:10.1016/j.carpath.2007.12.003
- Kohn, R., Abe, H., Oginosawa, Y., Tamura, M., Takeuchi, M., Nagatomo, T., et al. (2011). Reliability and characteristics of atrial tachyarrhythmias detection in dual chamber pacemakers. *Circulation J.* 75 (5), 1090–1097. doi:10.1253/circj.CJ-10-0896
- Kotecha, D., Lam, C. S. P., Van Veldhuisen, D. J., Van Gelder, I. C., Voors, A. A., and Rienstra, M. (2016). Heart failure with preserved Ejection Fraction and Atrial fibrillation: vicious twins. *J. Am. Coll. Cardiol.* 68 (20), 2217–2228. doi:10.1016/j.jacc.2016.08.048
- Kotecha, D., and Piccini, J. P. (2015). Atrial fibrillation in heart failure: what should we do? *Eur. Heart J.* 36, 3250–3257. doi:10.1093/eurheartj/ehv513
- McDonagh, T. A., Metra, M., Adamo, M., Gardner, R. S., Baumbach, A., Böhm, M., et al. (2021). 2021 ESC Guidelines for the diagnosis and treatment of acute and chronic heart failure. *Eur. Heart J.* 42 (36), 3599–3726. doi:10.1093/eurheartj/ehab368
- Minamiguchi, H., Abe, H., Kohno, R., Oginosawa, Y., Tamura, M., Takeuchi, M., et al. (2012). Incidence and characteristics of far-field R-wave sensing in low right atrial septum pacing. *Circulation J.* 76 (3), 598–606. doi:10.1253/circj.CJ-11-0745
- Naqvi, T. Z., and Chao, C.-J. (2023). Adverse effects of right ventricular pacing on cardiac function: prevalence, prevention and treatment with physiologic pacing. *Trends Cardiovasc. Med.* 33 (2), 109–122. doi:10.1016/j.tcm.2021.10.013
- Okubo, Y., Miyamoto, S., Uotani, Y., Ikeuchi, Y., Miyachi, S., Okamura, S., et al. (2022). Clinical impact of left bundle branch area pacing in heart failure with preserved ejection fraction and mid-range ejection fraction. *Pacing Clin. Electrophysiol.* 45 (4), 499–508. doi:10.1111/pace.14470_ORG
- Pastore, G., Marcantoni, L., Lanza, D., Maines, M., Noventa, F., Corbucci, G., et al. (2020). Occurrence of persistent atrial fibrillation during pacing for sinus node disease: the influence of His bundle pacing versus managed ventricular pacing. *J. Cardiovasc. Electrophysiol.* 32 (1), 110–116. doi:10.1111/jce.14810
- Ravi, V., Beer, D., Pietrasik, G. M., Hanifin, J. L., Ooms, S., Ayub, M. T., et al. (2020). Development of new-onset or progressive atrial fibrillation in patients with permanent HIS bundle pacing versus right ventricular pacing: results from the RUSH HBP registry. *J. Am. Heart Assoc.* 9 (22), e018478. doi:10.1161/jaha.120.018478
- Sartipy, U., Savarese, G., Dahlström, U., Fu, M., and Lund, L. H. (2019). Association of heart rate with mortality in sinus rhythm and atrial fibrillation in heart failure with preserved ejection fraction. *Eur. J. Heart Fail.* 21 (4), 471–479. doi:10.1002/ehf.1389
- Sweeney, M. O., Bank, A. J., Nsah, E., Koullick, M., Zeng, Q. C., Hettrick, D., et al. (2007). Minimizing ventricular pacing to reduce atrial fibrillation in sinus-node disease. *N. Engl. J. Med.* 357 (10), 1000–1008. doi:10.1056/NEJMoa071880
- Sweeney, M. O., Hellkamp, A. S., Ellenbogen, K. A., Greenspon, A. J., Freedman, R. A., Lee, K. L., et al. (2003). Adverse effect of ventricular pacing on heart failure and atrial fibrillation among patients with normal baseline QRS duration in a clinical trial of pacemaker therapy for sinus node dysfunction. *Circulation* 107 (23), 2932–2937. doi:10.1161/01.Cir.0000072769.17295.B1
- Takahashi, M., Kujiraoka, H., Arai, T., Kimura, T., Hojo, R., and Fukamizu, S. (2023). New-onset atrial high-rate episodes between his bundle pacing and conventional right ventricular septum pacing in patients with atrioventricular conduction disturbance. *J. Interventional Cardiac. Electrophysiol.* 67 (3), 471–477. doi:10.1007/s10840-023-01605-w
- Toennis, T., Bertaglia, E., Brandes, A., Dichtl, W., Fluschnik, N., de Groot, J. R., et al. (2023). The influence of atrial high-rate episodes on stroke and cardiovascular death: an update. *Europace* 25 (7), euad166. doi:10.1093/europace/euad166
- Younis, A., Tabaja, C., Santangeli, P., Nakagawa, H., Sipko, J., Madden, R., et al. (2024). Outcomes of atrial fibrillation ablation in heart failure subtypes. *Circulation Arrhythmia Electrophysiol.* 17, e012926. doi:10.1161/circpe.124.012926
- Zhang, D.-d., Zhao, F.-l., Yang, Y.-h., Ma, C. M., Ma, P. P., Zhao, Y. N., et al. (2023). Conduction system pacing improves the outcomes on patients with high percentage of ventricular pacing and heart failure with mildly reduced ejection fraction. *Front. Cardiovasc. Med.* 10, 1132520. doi:10.3389/fcvm.2023.1132520
- Zhang, S., Yang, W., Wang, S., Cheng, Y., Jiang, Z., Zhou, X., et al. (2024). New-onset atrial high-rate episodes in left bundle branch area pacing versus right ventricular pacing for patients with atrioventricular block. *Pol. Heart J.* 82 (6), 632–639. doi:10.33963/v.phj.100403
- Zhu, H., Li, X., Wang, Z., Liu, Q., Chu, B., Yao, Y., et al. (2023). New-onset atrial fibrillation following left bundle branch area pacing vs. right ventricular pacing: a two-centre prospective cohort study. *EP Eur.* 25 (1), 121–129. doi:10.1093/europace/euac132
- Ziacchi, M., Palmisano, P., Biffi, M., Ricci, R. P., Landolina, M., Zoni-Berisso, M., et al. (2018). Clinically oriented device programming in bradycardia patients: part 1 (sinus node disease). Proposals from AIAC (Italian Association of Arrhythmology and Cardiac Pacing). *J. Cardiovasc. Med.* 19 (4), 161–169. doi:10.2459/jcm.0000000000000630