



OPEN ACCESS

APPROVED BY
Frontiers Editorial Office,
Frontiers Media SA, Switzerland

*CORRESPONDENCE
Frontiers Production Office,
✉ production.office@frontiersin.org

RECEIVED 19 April 2023
ACCEPTED 19 April 2023
PUBLISHED 03 May 2023

CITATION
Frontiers Production Office (2023),
Erratum: Chemical probe mediated
visualization of protein S-palmitoylation
in patient tissue samples.
Front. Physiol. 14:1208618.
doi: 10.3389/fphys.2023.1208618

COPYRIGHT
© 2023 Frontiers Production Office. This
is an open-access article distributed
under the terms of the [Creative
Commons Attribution License \(CC BY\)](#).
The use, distribution or reproduction in
other forums is permitted, provided the
original author(s) and the copyright
owner(s) are credited and that the original
publication in this journal is cited, in
accordance with accepted academic
practice. No use, distribution or
reproduction is permitted which does not
comply with these terms.

Erratum: Chemical probe mediated visualization of protein S-palmitoylation in patient tissue samples

Frontiers Production Office*

Frontiers Media SA, Lausanne, Switzerland

KEYWORDS

palmitoylation, cancer, signaling, chemical probe, EGFR

An Erratum on
Chemical probe mediated visualization of protein S-palmitoylation in patient tissue samples

by Schek N, Lee J-Y, Burslem GM and Witze E (2023). *Front. Physiol.* 14:1063247. doi: [10.3389/fphys.2023.1063247](#)

Due to a production error, labels for **Figure 3** (c and d) were not included in the final article. The corrected figure appears below.

The publisher apologizes for this mistake. The original version of this article has been updated.

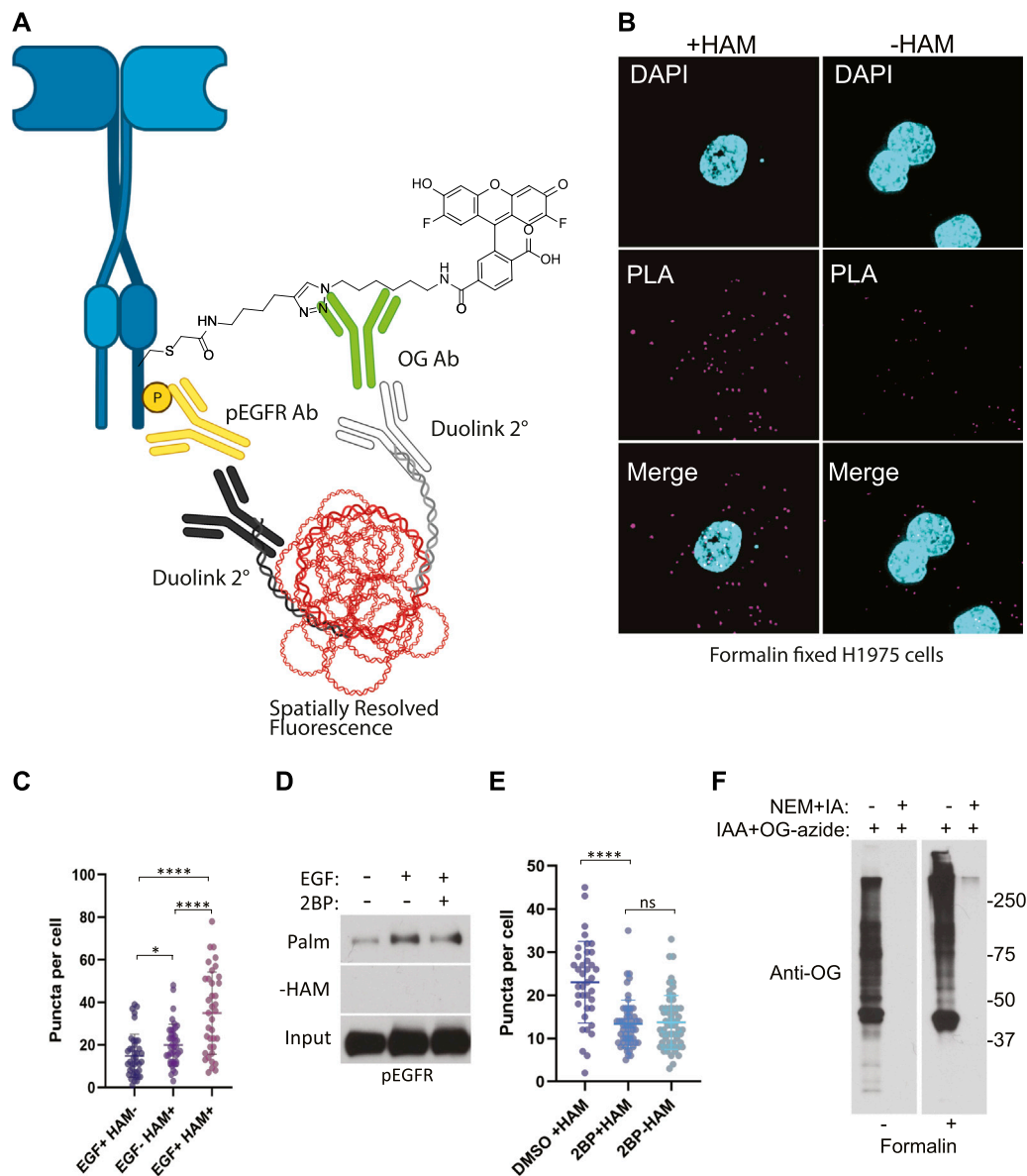


FIGURE 3

(A) Schematic of the ABE-PLA showing method for detecting palmitoylated EGFR in formalin fixed cells processed with the ABE protocol and palmitate was replaced with Oregon green-iodoacetamide. Following the ABE, the proximity ligation assay was performed using primary antibodies to EGFR-phosphoTyrosine1068 and the Oregon Green (OG) label. Samples were incubated with species specific secondary PLA antibodies followed by annealing to single stranded circular DNA which is then amplified with DNA polymerase. The amplified DNA is detected with fluorescently tagged complementary oligonucleotides and is visualized as fluorescent puncta. (B) Formalin fixed H1975 lung cancer cells processed with the ABE-PLA. PLA signal is detected in cells treated with hydroxylamine (+HAM). Omitting hydroxylamine reduces the number of puncta in the negative control (-HAM) DAPI is shown in cyan and PLA signal in magenta. (C) Puncta per cell were quantified in all conditions (Unpaired Student's *T*-test: EGF + HAM-vs. EGF + HAM+ **** $p < 0.0001$; EGF - HAM+ **** $p < 0.0001$; EGF + HAM-vs EGF-HAM+ * $p < 0.05$). Total Number of Cells = 119. (D) Standard ABE assay of H1975 cells treated with 100 nM 2-bromopalmitate followed by 100 ng/mL EGF stimulation. (E) Quantitation of ABE-PLA puncta of cells with or without 2-bromopalmitate with and without EGF stimulation. [Unpaired Student's *T*-test: DMSO + HAM + vs. 2BP + HAM+ **** $p < 0.0001$; 2BP + HAM + vs. 2BP + HAM-not significant (ns)]. Total Number of Cells = 153. (F) Validation of efficient cysteine blocking and labelling of formalin fixed cells *in vitro*.