



Meta-Analysis of the Factors Influencing the Restoration of Spontaneous Circulation After Cardiopulmonary Resuscitation

Hui-Ru An^{1†}, Yi-Ran Han^{1†}, Tian-Hao Wang^{2†}, Fei Chi³, Yu Meng³, Chun-Yan Zhang³, Jian-Qin Liang^{1*} and Xiang-Lan Li^{3*}

¹Department of Tuberculosis, Senior Department of Tuberculosis, The Eighth Medical Center of PLA General Hospital, Beijing, China, ²Emergency Department, The Eighth Medical Center of PLA General Hospital, Beijing, China, ³Emergency Department, Hebei Chest Hospital, Shijiazhuang City, China

OPEN ACCESS

Edited by:

Richard Gary Trohman,
Rush University, United States

Reviewed by:

Dorota Zyśko,
Wroclaw Medical University, Poland
Vasilios E. Papaioannou,
Democritus University of Thrace,
Greece

*Correspondence:

Xiang-Lan Li
lxianlanf@163.com
Jian-Qin Liang
wliangjianqin@126.com

[†]These authors have contributed
equally to this work

Specialty section:

This article was submitted to
Respiratory Physiology,
a section of the journal
Frontiers in Physiology

Received: 13 December 2021

Accepted: 31 January 2022

Published: 08 March 2022

Citation:

An H-R, Han Y-R, Wang T-H, Chi F,
Meng Y, Zhang C-Y, Liang J-Q and Li
X-L (2022) Meta-Analysis of the
Factors Influencing the Restoration of
Spontaneous Circulation After
Cardiopulmonary Resuscitation.
Front. Physiol. 13:834352.
doi: 10.3389/fphys.2022.834352

Objective: This study aimed to systematically evaluate the factors influencing the restoration of spontaneous circulation (ROSC) after cardiopulmonary arrest (CA).

Methods: Relevant papers on the factors influencing the ROSC in patients with CA were retrieved from PubMed, Embase, Cochrane Library, China Biology Medicine disk, China National Knowledge Infrastructure, Wanfang, and VIP databases. After screening, data extraction, and quality evaluation of the papers, a meta-analysis was carried out.

Results: A total of 36 papers, involving a total sample size of 2,305 cases, were included. The meta-analysis revealed that the location and time of onset of CA, the type of cardiac rhythm at first monitoring, the start time of cardiopulmonary resuscitation (CPR), the use of electric defibrillation, and the cumulative dose of adrenaline all significantly impacted the ROSC ($p < 0.05$) and may have affected its success rate. The pH value at CA onset, combined use of adrenaline and vasopressin, CPR duration, mechanical cardiac compression use, and whether CA was caused by heart disease had no significant effect on ROSC.

Conclusion: The location and time of onset of CA, the cardiac rhythm at first monitoring, the start time of CPR, the use of electric defibrillation, and the cumulative dose of adrenaline significantly impacted the ROSC.

Keywords: cardiopulmonary resuscitation, return of spontaneous circulation, influencing factors, meta-analysis, cardiopulmonary arrest

INTRODUCTION

Cardiopulmonary arrest (CA) is a common acute and critical illness in which the heartbeat ceases without warning and the patient suddenly stops breathing. There is a sudden loss of consciousness, respiratory arrest, or weak, sigh-like breathing, and no pulse can be felt. Cardiopulmonary resuscitation (CPR) is an important measure used to treat CA. Although CPR and other advanced recovery technologies are improving, the restoration of spontaneous

circulation (ROSC) rate is still very low (Tang et al., 2017). This study systematically evaluated the factors influencing the ROSC in patients with CA to provide a reference point for future treatment.

MATERIALS AND METHODS

Literature Retrieval

Relevant studies, published between 1 January 2010, and 1 January 2021, were retrieved from databases including PubMed, Embase, the China Biology Medicine disk, the China National Knowledge Infrastructure, and the Wanfang, and VIP databases. The English keywords were “cardiovascular resuscitation,” “diagnostic factors,” “cardiac arrest,” and “factors analysis.” The Chinese keywords were “心肺复苏,” “心脏骤停,” “心搏骤停,” and “预后.” In addition, the references of all the included papers were retrieved to identify more relevant studies. All documents were entered onto the Endnote reference management software. Two researchers independently screened the papers to evaluate the eligibility of the studies and were blinded to each other’s decisions. Standard data extraction tables were used to extract data and to crosscheck the results to minimize bias and randomization errors in the data analysis.

Inclusion and Exclusion Criteria

Inclusion criteria: (1) All the included patients were diagnosed with CA in emergency departments; (2) all patients underwent CPR; (3) all studies were of a randomized controlled, case-control, or cohort design; and (4) complete data were available.

Exclusion criteria: (1) The full text or quantitative extraction of indicators was not available; (2) the paper was a review, a case report, an animal study, or nursing-related or *in vitro* research; (3) the paper was a duplicate or of a low quality; and (4) the language was not Chinese or English.

Data Extraction and Quality Evaluation

For each paper, the first author, year of publication, country or region of publication, sample size, gender, age, clinical indicators, and other patient-related data were extracted. The quality of the cohort studies was evaluated by two researchers in strict accordance with the Newcastle–Ottawa Scale (NOS). Where there was disagreement, this was discussed by both parties or ruled upon by a third researcher.

Statistical Analysis

The data were statistically analyzed using the statistical software STATA 11.0. Cochran’s Q test and the I^2 test were used to test for heterogeneity. If $p < 0.05$ or $I^2 > 50\%$, the random effect model was adopted, and if $p > 0.05$ or $I^2 < 50\%$, the fixed-effects model was adopted. The risk ratio (RR) and a 95% CI were used to evaluate the therapeutic effect of binary variables. Standardized mean difference (SMD) or weighted mean difference (WMD) was used to analyze

continuous variables according to whether the units of specific indicators were unified. The inspection level of the meta-analysis was set as $\alpha = 0.05$, and the 95% CI was calculated for all analyses. Egger’s test was used to evaluate publication bias, while evaluation quality bias was eliminated by a sensitivity analysis.

RESULTS

Characteristics of the Selected Studies

A total of 10,202 papers were retrieved. After excluding duplicate and irrelevant papers, a total of 36 studies, based on 2,305 patients, were included. The literature retrieval flow chart is shown in **Figure 1**. The characteristics of the included papers are shown in **Table 1**. The results of the evaluation of the study quality, according to the NOS scale, are shown in **Figure 2**.

Meta-Analysis Results

Meta-Analysis of the Impact of Location and Time of Onset of CA on the ROSC

Eight and 10 articles, respectively, investigated these relationships (**Figures 3A,B**). The meta-analysis revealed that, compared with out-of-hospital CA, the RR for the ROSC in the hospital was 3.59 (95% CI = 2.05–6.28, $p < 0.001$), and compared with CA at night, the RR for the ROSC during the day was 1.40 (95% CI = 1.25–1.57, $p < 0.001$). Therefore, both the location and time of CA are associated with the success rate of the ROSC.

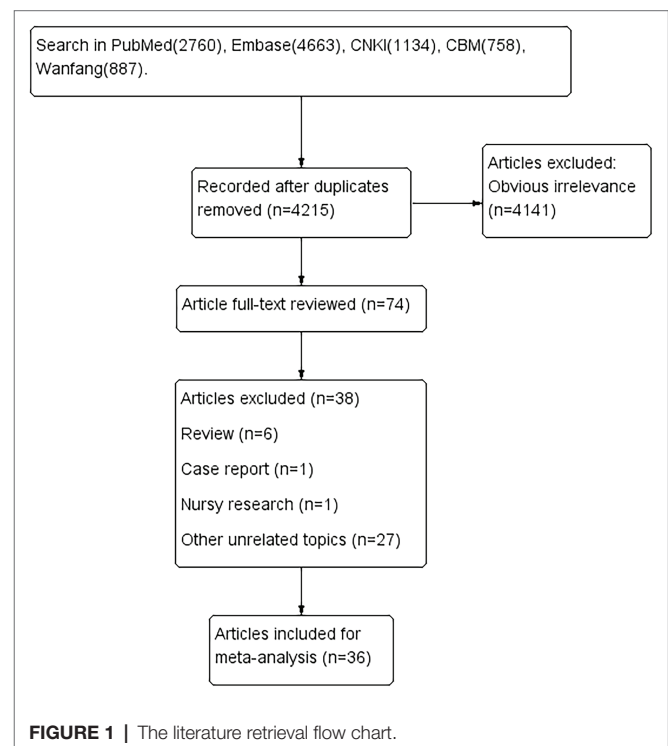


TABLE 1 | Basic situations of included literatures.

References	Sample size		Age			Gender		State	Literature type	NOS score	Outcome indicator
	Control group	Observation group	Control group	Observation group	Average age	Male	Female				
Dumas et al., 2014	1,134	422	60.3	58.3	NA	1,112	444	France	CS	8	⑩
Xue et al., 2013	187	538	NA	NA	NA	519	206	China	CS	6	①②③④⑥⑦⑩
Ducros et al., 2011	16	14	60±4	56±4	NA	25	5	France	RCT	0	⑩
Ong et al., 2012	353	374	64.9	64.6	NA	505	222	Singapore	RCT	0	⑩
Rohlin et al., 2018	1,639	798	NA	NA	NA	145	103	Sweden	CS	8	⑦
Takayama et al., 2019	948	306	72	67	NA	837	417	Japan	CS	8	②
Cai, 2020	39	61	72.1±13.25	45.2±11.23	NA	23	16	China	CS	5	③④
Ding and Xie, 2012	82	72	NA	NA	NA	98	56	China	CS	8	⑤
Qiao et al., 2016	77	71	NA	NA	NA	85	63	China	CS	5	⑤
Liu, 2018	125	75	NA	NA	NA	137	63	China	CS	7	①⑦⑧⑩
Mao, 2019	147	71	51	73	NA	143	75	China	CS	5	
Zhou et al., 2020	71	27	NA	NA	NA	58	40	China	CS	6	③⑨⑩
Zhang et al., 2021a	40	28	NA	NA	NA	39	29	China	CS	5	③⑩
Zhang et al., 2018	36	57	71.33±8.25	72.45±7.64	NA	51	42	China	CS	6	③⑥⑦⑩
Zhang et al., 2021b	38	114	NA	NA	51.43±15.29	27	11	China	CS	7	①②③④⑥⑩
Zhang, 2020	100	100	70.4±6.48	51.2±6.11	NA	58	42	China	CS	5	
Xu et al., 2019	861	530	NA	NA	60.1±18.9	821	570	China	CS	5	②③④⑦⑧⑩
Jing et al., 2017	72	321	65.6±17.32	65.0±16.43	NA	284	109	China	CS	5	①
Li, 2017	37	21	NA	NA	45.27±6.18	31	27	China	CS	3	
Li et al., 2018a	55	31	NA	NA	NA	49	37	China	CS	4	
Li, 2020	46	74	NA	NA	66.5±6.6	72	48	China	CS	7	①②③④⑥⑦⑩
Li and Jia, 2020	50	53	54.1±10.37	53.7±11.25	NA	56	47	China	CS	5	⑩
Du, 2014	9	51	NA	NA	46.8±9.7	37	23	China	CS	5	
Yang et al., 2016	75	223	NA	NA	NA	205	93	China	CS	5	②③④⑥⑩
Hu et al., 2018	208	405	NA	NA	59.42±18.61	410	203	China	CS	8	⑤⑨
Hu and Lu, 2016	129	152	NA	NA	NA	161	120	China	CS	8	②⑤
Cai et al., 2019	81	71	NA	NA	65.33±14.98	96	56	China	CS	8	②⑧
Chen and Luo, 2018	48	56	NA	NA	NA	71	33	China	CS	5	②⑦⑩
Chen et al., 2020	71	31	NA	NA	69.9±17.7	57	45	China	CS	7	①③⑥⑦
Chen, 2019	18	64	NA	NA	56.17±8.11	50	32	China	CS	7	
Chen et al., 2016	29	105	NA	NA	NA	92	42	China	CS	5	
Wei, 2021	16	104	NA	NA	60.2±10.4	83	37	China	CS	5	①②③④⑩
Li et al., 2018b	39	185	61.3±13.4	60.3±12.8	NA	140	84	China	CS	5	②⑩
Zhao et al., 2021	41	41	44.89±6.92	46.31±7.86	NA	50	32	China	CS	6	⑨

(Continued)

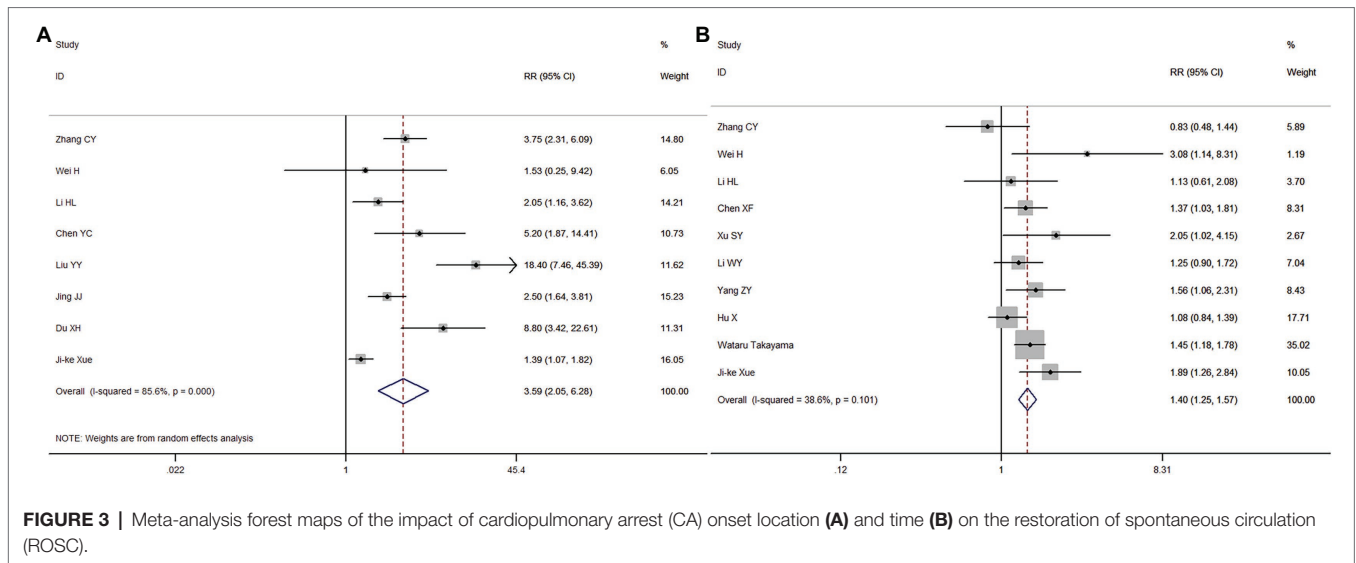


FIGURE 3 | Meta-analysis forest maps of the impact of cardiopulmonary arrest (CA) onset location (A) and time (B) on the restoration of spontaneous circulation (ROSC).

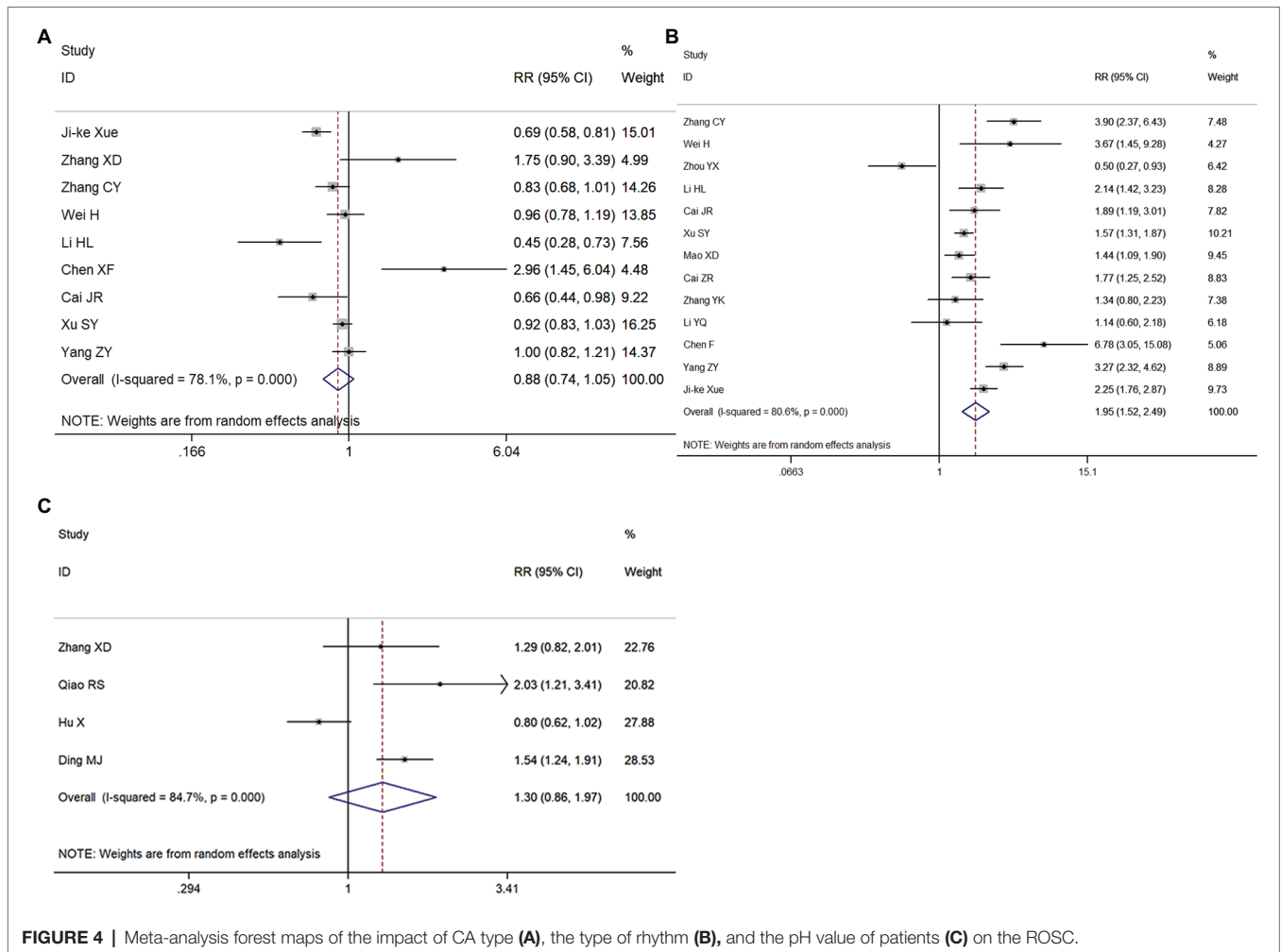


FIGURE 4 | Meta-analysis forest maps of the impact of CA type (A), the type of rhythm (B), and the pH value of patients (C) on the ROSC.

RR for the ROSC in CA patients with shockable rhythms was 1.95 (95% CI = 1.52–2.49, $p < 0.001$; **Figure 4B**). Finally, the RR for the ROSC in patients with $pH > 7.0$ was 1.26 (95%

CI = 0.75–2.11, $p = 0.38$) compared with patients with $pH < 7.0$ (**Figure 4C**). Therefore, only a shockable rhythm was related to a successful ROSC.

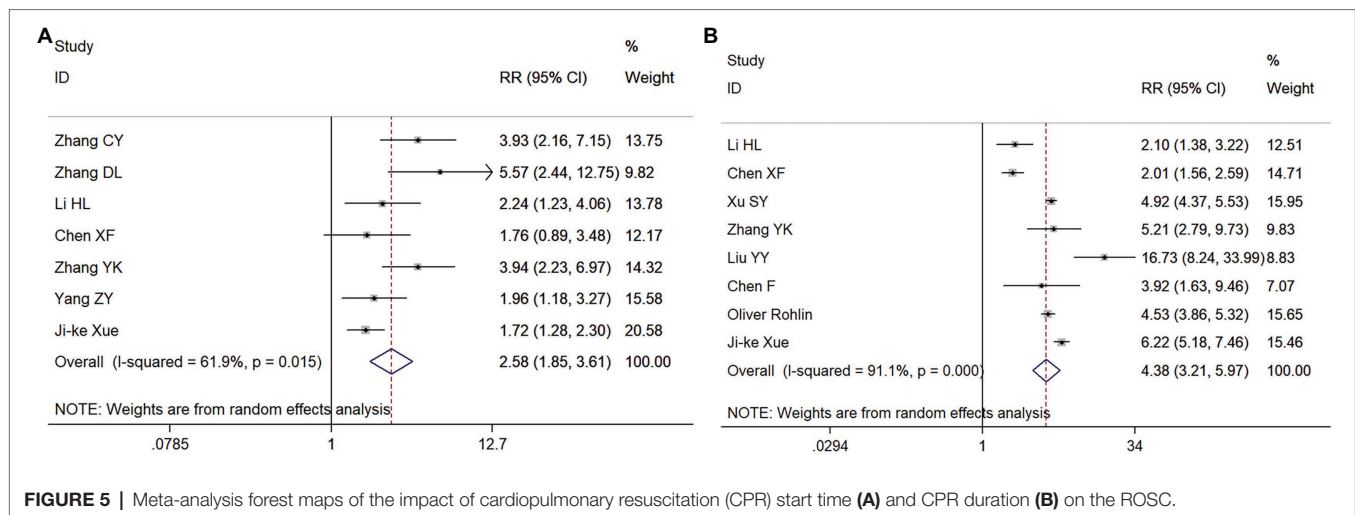


FIGURE 5 | Meta-analysis forest maps of the impact of cardiopulmonary resuscitation (CPR) start time (A) and CPR duration (B) on the ROSC.

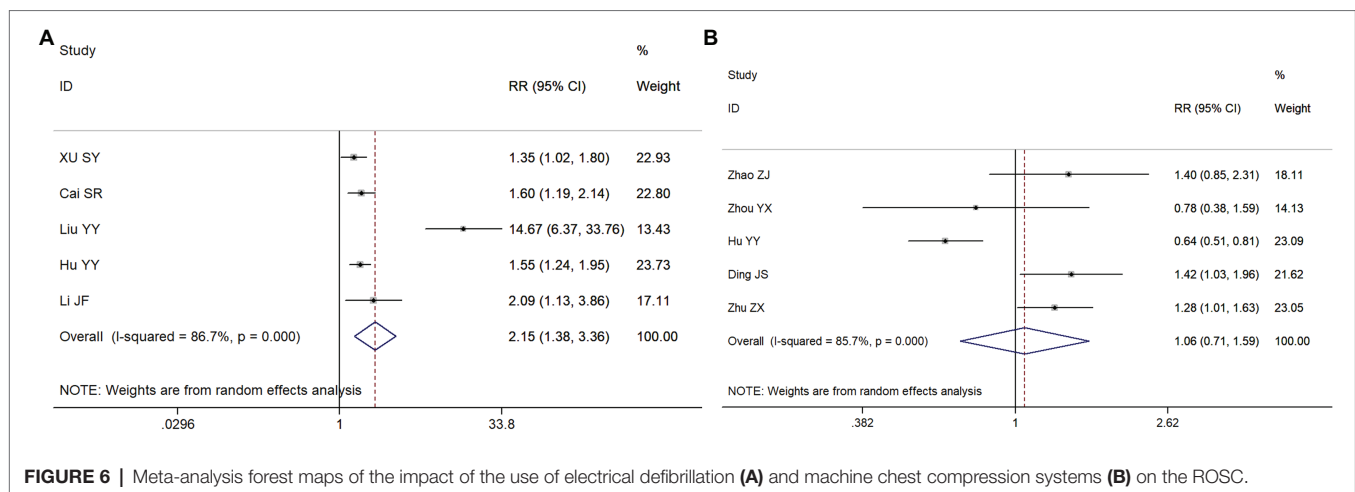


FIGURE 6 | Meta-analysis forest maps of the impact of the use of electrical defibrillation (A) and machine chest compression systems (B) on the ROSC.

Meta-Analysis of the Effect of CPR Start Time and Duration on the ROSC

Seven and eight articles, respectively, were included in these meta-analyses. Compared with a CPR start time >5 min, the RR for the ROSC in patients with a CPR start time ≤ 5 min was 2.58 (95% CI = 1.85–3.61, $p < 0.001$; **Figure 5A**); the RR for the ROSC in patients with a CPR duration ≤ 15 min was 4.38 (95% CI = 3.21–5.97, $p < 0.001$), compared with a CPR duration >15 min (**Figure 5B**). Therefore, both the start time and the duration of CPR were significantly associated with the ROSC in patients with CA.

Meta-Analysis of the Effects of the Use of Electrical Defibrillation and CPR Machines on the ROSC

Five independent studies were included in the meta-analyses to study the effect of the use of electric defibrillation and CPR machines on the ROSC in patients with CA. Compared with patients in whom electrical defibrillation was not used, the RR for the ROSC in patients receiving electrical defibrillation

was 2.15 (95% CI = 1.38–3.36, $p = 0.01$; **Figure 6A**). However, compared with patients receiving manual chest compression, the RR for patients on whom a CPR machine was used was 1.06 (95% CI = 0.71–1.59, $p = 0.784$; **Figure 6B**). Therefore, electric defibrillation therapy was positively associated with the ROSC in patients with CA, while machine chest compression systems had no significant influence on ROSC.

Meta-Analysis of the Effects of the Cumulative Dose of Adrenaline and the Combined Use of Adrenaline and Vasopressin on the ROSC

Fourteen and three studies, respectively, were included in these analyses. Compared with patients receiving >5 mg of adrenaline, the RR for the ROSC in patients receiving ≤ 5 mg of adrenaline was 2.58 (95% CI = 1.86–3.58, $p < 0.001$; **Figure 7A**), while the RR for the ROSC in patients treated with adrenaline and vasopressin was 1.08 (95% CI = 0.83–1.41, $p = 0.564$), compared to those treated with adrenaline only (**Figure 7B**). Therefore, the cumulative dose of adrenaline was negatively correlated with the ROSC in patients with CA.

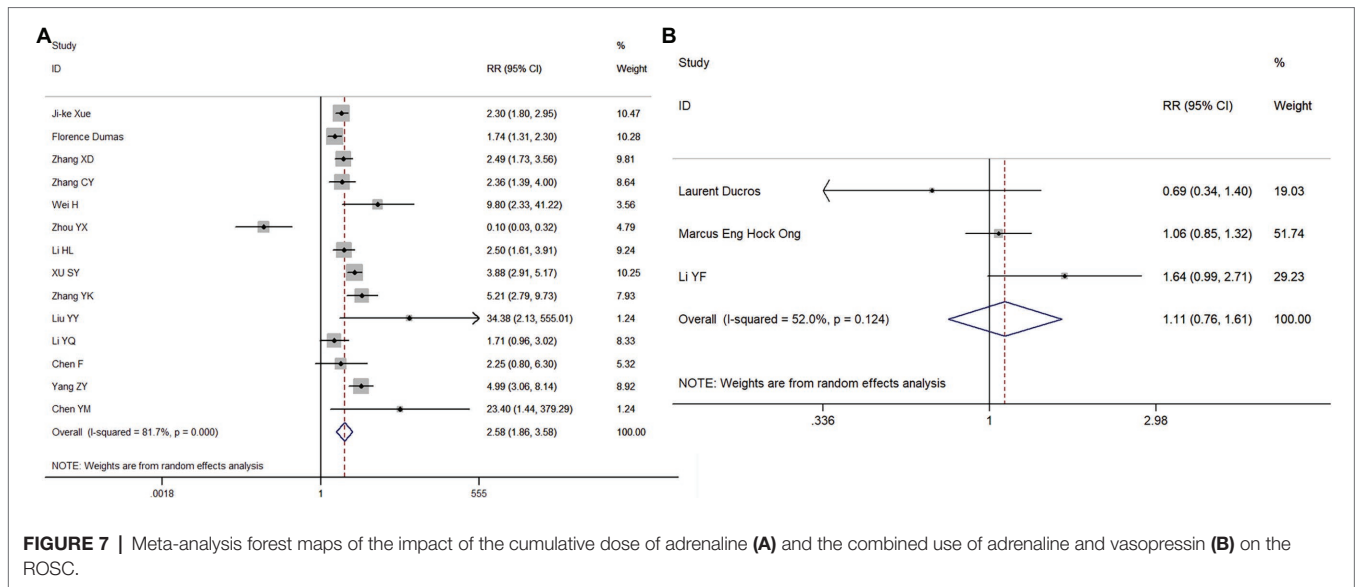


FIGURE 7 | Meta-analysis forest maps of the impact of the cumulative dose of adrenaline (A) and the combined use of adrenaline and vasopressin (B) on the ROSC.

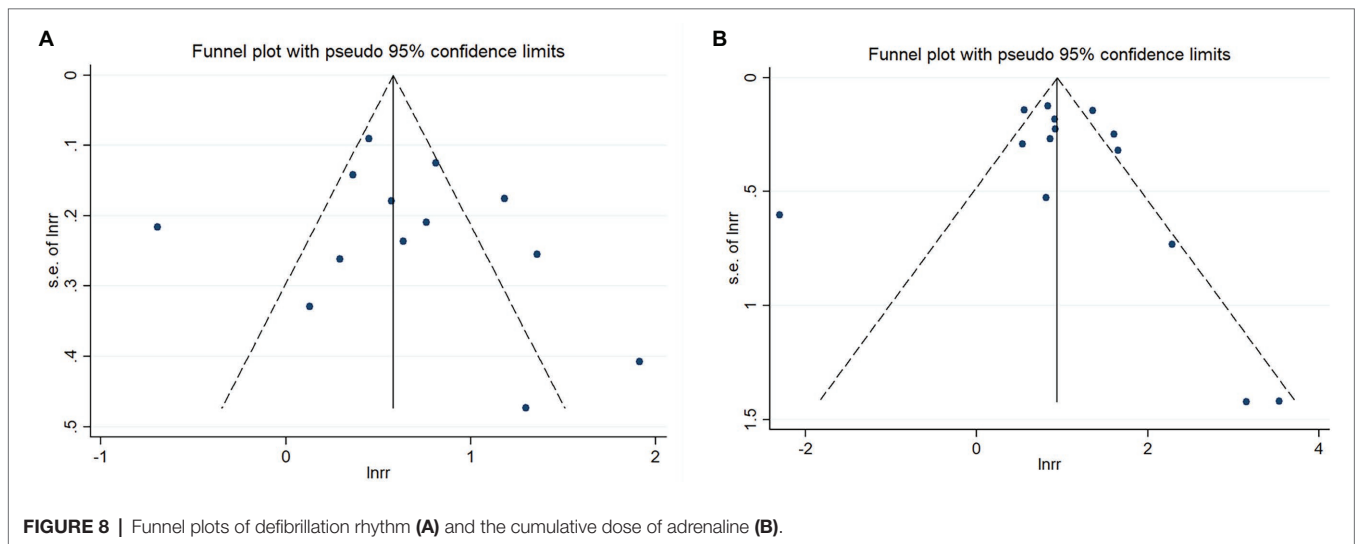


FIGURE 8 | Funnel plots of defibrillation rhythm (A) and the cumulative dose of adrenaline (B).

Publication Bias and Sensitivity Analysis

Egger’s tests and funnel plot analyses were carried out for 11 indexes, which revealed no publication bias in any of them ($p > 0.05$). Some of the funnel diagrams are shown in Figures 8A,B.

DISCUSSION

Cardiac arrest is the most critical state seen in clinical practice. Although diagnosis and treatment have progressed in recent years, the prognosis for CA is still poor. Multiple factors impact the prognosis of the ROSC in patients with CA (Neumar et al., 2015). Medical staff must assess these so that the prognosis of patients can be more accurately judged and patients can receive the correct and timely treatment. This meta-analysis revealed that the location and time of onset of CA, the type

of cardiac rhythm, the start time of CPR, the use of external defibrillators, and the cumulative dose of adrenaline significantly impacted the ROSC and may affect its success rate.

This meta-analysis revealed that the RRs for the ROSC in patients who suffered a CA during the day or in the hospital were significantly increased. Additionally, a considerable proportion of patients who suffer a CA at night or outside of the hospital may not receive CPR in time or in the correct manner. Furthermore, the ROSC in patients who received CPR within 5 min was also significantly increased. This suggests that the earlier CPR starts, the greater the likelihood of successful ROSC in patients with CA. Zhao reported that the smaller the rescue radius, and the shorter the CA duration, the higher the rate of successful resuscitation (Zhao, 2017). A previous study also revealed that CPR given by eyewitnesses and electrical defibrillation were both associated with a 1-year improvement in neurological function and the reduction of all-cause mortality

(Kragholm Wissenberg et al., 2017). Therefore, familiarization with CPR and rapid provision of CPR will greatly improve the success rate of treatment for patients with CA.

Whether CA is caused by heart disease and the PH value before treatment were not related to ROSC, but electrical defibrillation was given to patients with defibrillation rhythm or CA, suggesting that electrocardiography or electrocardiogram monitoring should be performed immediately if conditions permit to facilitate timely defibrillation. When the initial heart rhythm is ventricular fibrillation or ventricular tachycardia before electric defibrillation, the heart is in the condition of weak and irregular contraction. Therefore, the CPR in patients with ventricular fibrillation or ventricular tachycardia has a better performance. Where this is not possible, patients can be treated by electric defibrillation, which increases the probability of successful ROSC.

This meta-analysis showed that CPR of a shorter duration increased the probability of the ROSC in patients with CA. Similarly, a cumulative dose of adrenaline was negatively correlated with the ROSC. The longer duration of CPR will lead to more serious ischemia of vital organs, such as the heart, lung, and brain. Prolonged CPR may result in irreversible damage to these vital organs and result in poor patient prognosis even if ROSC occurs. Epinephrine has a more pronounced treatment benefit when given early in the resuscitation process, especially for non-shockable cardiac arrest (Soar and Berg, 2021). It is both a beta- and alpha-adrenergic receptor agonist. Its alpha effects cause peripheral vasoconstriction, which leads to increased blood flow in the central circulation, improving perfusion of the brain and heart. Epinephrine's beta-adrenergic effects increase heart rate, contractility, and automaticity. These potentially deleterious effects may lead to ventricular tachyarrhythmias and increased myocardial oxygen demand (Jung et al., 2018). Furthermore, the gradual accumulation of adrenaline leads to an increase in adverse reactions, such as visceral vasoconstriction, organ injury, and malignant arrhythmia.

The use of CPR machines does not increase the probability of successful ROSC compared with manual chest compression. Machine chest compression systems save on manpower (by decreasing or eliminating fatigue) and can automatically achieve the best balance between ventilation and compression. However, manual chest compression is simple to operate and does not require the use of other instruments, and it is not affected

by factors such as time and location. Therefore, it is widely used in settings where a CPR machine cannot be installed. Furthermore, manual chest compression does not decrease the probability of ROSC in patients with CA.

This meta-analysis has some limitations. The quality of some of the papers included was low, and some of the factors were examined by only a few studies, which may have restricted the validity of the results. Therefore, the results of this meta-analysis should be treated with caution. The factors influencing the ROSC after CA must be confirmed by large-scale clinical trials to provide a practical and reliable reference basis for clinical treatment.

In summary, the location and time of onset of CA, the first monitored rhythm, the start time of CPR, the use of electric defibrillation, and the cumulative dose of adrenaline had significant effects on ROSC.

DATA AVAILABILITY STATEMENT

The original contributions presented in the study are included in the article/supplementary material; further inquiries can be directed to the corresponding authors.

ETHICS STATEMENT

Ethical review and approval was not required for the study on human participants in accordance with the local legislation and institutional requirements. Written informed consent for participation was not required for this study in accordance with the national legislation and the institutional requirements.

AUTHOR CONTRIBUTIONS

H-RA, J-QL, and X-LL: conception and design of the research. Y-RH, FC, and YM: acquisition of data. Y-RH and H-RA: analysis and interpretation of the data. Y-RH and C-YZ: statistical analysis. X-LL: obtaining financing. H-RA, Y-RH, and J-QL: writing of the manuscript. T-HW and X-LL: critical revision of the manuscript for intellectual content. All authors contributed to the article and approved the submitted version.

REFERENCES

- Cai, J. R. (2020). Clinical characteristics of cardiac arrest in emergency patients and influencing factors for success rate of cardiopulmonary resuscitation. *J. Guangdong Med. Univ.* 38, 50–53. doi: 10.3969/j.issn.1005-4057.2020.01.012
- Cai, Z. S., Fang, W. G., Chen, H. H., Chen, R. H., Zhang, H. W., Zhu, L. M., et al. (2019). Analysis of influencing factor of in-hospital cardiac arrest prognosis. *J. Trauma Emerg.* 7, 16–21. doi: 10.16746/j.cnki.11-9332/r.2019.01.004
- Chen, Y. C. (2019). Analysis of influencing factors and clinical characteristics of cardiopulmonary resuscitation success rate in patients with cardiac arrest. *Chin. J. Clin. Rational Drug Use* 12, 103–104. doi: 10.15887/j.cnki.13-1389/r.2019.02.070
- Chen, Y. M., Dai, M. Y., Hao, W., Deng, G. Q., Deng, B. L., Feng, X. H., et al. (2016). Analysis of influence factors on cardiopulmonary resuscitation patients survived to discharge in emergency department. *Mod. Med. J. China* 1, 21–24. doi: 10.3969/j.issn.1672-9463.2016.01.006
- Chen, X. F., Ji, J. J., Sun, T., Zhao, H., and Liao, D. M. (2020). Analysis of associated factors of the prognosis after cardiopulmonary resuscitation in in-hospital cardiac arrest patients. *Chin. J. Emerg. Resuscitat. Disaster Med.* 15, 1366–1370. doi: 10.3969/j.issn.1673-6966.2020.12.010
- Chen, F., and Luo, J. (2018). Analysis of factors influencing the effect of cardiopulmonary resuscitation before and in hospital. *Modern Instruments* 24, 55–57. doi: 10.11876/mimt201801022
- Ding, M. J., and Xie, J. (2012). Analysis of prognostic factors in patients with cardiopulmonary resuscitation and spontaneous circulation recovery. *J. Pract. Med.* 28, 3956–3959. doi: 10.3969/j.issn.1006-5725.2012.23.039
- Ding, J. S., and Zhang, T. (2018). Effects of bare-handed chest compression and mechanical chest compression on blood gas parameters and prognosis of patients

- during the initial stage of cardiopulmonary resuscitation. *Chin. Mod. Doctor* 56, 91–94.
- Du, X.H. (2014). Analysis of factors affecting the prognosis of cardiac arrest patients and experience of cardiopulmonary resuscitation. Chinese Journal of Emergency Medicine, Collection of papers of the 13th Solicitation meeting and the sixth Youth Forum on Emergency Medicine.
- Ducros, L., Vicaut, E., Soleil, C., Le Guen, M., Gueye, P., Poussant, T., et al. (2011). Effect of the addition of vasopressin or vasopressin plus nitroglycerin to epinephrine on arterial blood pressure during cardiopulmonary resuscitation in humans. *J. Emerg. Med.* 41, 453–459. doi: 10.1016/j.jemermed.2010.02.030
- Dumas, F., Bougouin, W., Geri, G., Lamhaut, L., Bougle, A., Daviaud, F., et al. (2014). Is epinephrine during cardiac arrest associated with worse outcomes in resuscitated patients? *J. Am. Coll. Cardiol.* 64, 2360–2367. doi: 10.1016/j.jacc.2014.09.036
- Hu, X., and Lu, Z. Y. (2016). Univariate analysis of pediatric in-hospital cardiopulmonary resuscitation. *Chin. Pediatr. Emerg. Med.* 2, 100–106. doi: 10.3760/cma.j.issn.1673-912.2016.02.007
- Hu, Y. Y., Xu, J., Zhu, H. D., Zhang, G. X., Sun, F., Zhang, Y. Z., et al. (2018). Profile and outcome of cardiopulmonary resuscitation after sudden cardiac arrests in the emergency department: a multicenter prospective observational study. *Chin. Crit. Care Med.* 30, 234–239. doi: 10.3760/cma.j.issn.2095-4352.2018.03.009
- Jing, J. J., He, G. H., and Yu, Z. F. (2017). Analysis of clinical prognosis and risk factors after cardiopulmonary resuscitation. *J. Clin. Emerg.* 18, 428–432. doi: 10.13201/j.issn.1009-5918.2017.06.007
- Jung, J., Rice, J., and Bord, S. (2018). Rethinking the role of epinephrine in cardiac arrest: the PARAMEDIC2 trial. *Ann. Transl. Med.* 6:S129. doi: 10.21037/atm.2018.12.31
- Kragholm Wissenberg, M., Mortensen, R. N., Hansen, S. M., Malta Hansen, C., Thorsteinsson, K., et al. (2017). Bystander efforts and 1-year outcomes in out-of-hospital cardiac arrest. *N. Engl. J. Med.* 376, 1737–1747. doi: 10.1056/NEJMoal601891
- Li, J. F. (2017). Clinical factors influencing the effect of pre-hospital emergency cardiopulmonary resuscitation. *Med. Forum* 21, 3089–3090. doi: 10.19435/j.1672-1721.2017.23.044
- Li, H. L. (2020). Logistic regression analysis of prognostic factors of cardiopulmonary resuscitation in emergency department. *J. Med. Theor. Pract.* 33, 3178–3180. doi: 10.19381/j.issn.1001-7585.2020.19.013
- Li, Y. F., and Jia, Q. Y. (2020). Effect of antidiuretic hormone combined with epinephrine in the treatment of emergency cardiac arrest patients. *Chin. Pract. Med.* 15, 110–112. doi: 10.14163/j.cnki.11-5547/r.2020.02.050
- Li, W. Y., Liu, S. F., Zhang, X. C., Zhao, L. L., Sun, Y. P., and Zhao, M. (2018a). Analysis on influencing factors of short-term prognosis of cardiopulmonary resuscitation among children with sudden cardiac arrest in pediatric intensive care unit. *Matern. Child Health Care Chin.* 33, 129–132.
- Li, Y. Q., Qiu, Q. H., Zhang, X. B., Jiang, C. F., and Xing, B. (2018b). Analysis of factors influencing successful cardiopulmonary resuscitation in patients with cardiac arrest. *Journal of Guangdong Medical University.* 36, 600–602. doi: 10.3969/j.issn.1005-4057.2018.05.033
- Liu, Y. Y. (2018). Influence factors of survival and discharge in emergency department patients undergoing cardiopulmonary resuscitation. *Chin. Mod. Doctor* 56, 105–107.
- Mao, X.D. (2019). Analysis of Influencing Factors of Return of Spontaneous Circulation in-Hospital Adult Cardiac Arrest Patients. Ningxia Medical University. Available at: <https://d.wanfangdata.com.cn/thesis/D02046163> (Accessed May 15, 2022).
- Neumar, R. W., Shuster, M., Callaway, C. W., Gent, L. M., Atkins, D. L., Bhanji, E., et al. (2015). Part 1: executive summary: 2015 american heart association guidelines update for cardiopulmonary resuscitation and emergency cardiovascular care. *Circulation* 132, S315–S367. doi: 10.1161/CIR.0000000000000252
- Ong, M. E., Tiah, L., Leong, B. S., Tan, E. C., Ong, V. Y., Tan, E. A., et al. (2012). A randomised, double-blind, multi-Centre trial comparing vasopressin and adrenaline in patients with cardiac arrest presenting to or in the emergency department. *Resuscitation* 83, 953–960. doi: 10.1016/j.resuscitation.2012.02.005
- Qiao, R. S., Wu, X., Feng, X., Feng, N., Ni, W. D., and Zhao, X. Y. (2016). Logistic regression analysis on prognosis of patients with cardiopulmonary resuscitation return of spontaneous circulation. *Progress Modern Biomed.* 16, 6942–6958. doi: 10.13241/j.cnki.pmb.2016.35.039
- Rohlin, O., Taeri, T., Netzereab, S., Ullemark, E., and Djärv, T. (2018). Duration of CPR and impact on 30-day survival after ROSC for in-hospital cardiac arrest-A Swedish cohort study. *Resuscitation* 132, 1–5. doi: 10.1016/j.resuscitation.2018.08.017
- Soar, J., and Berg, K. M. (2021). Early epinephrine administration for cardiac arrest. *JAMA Netw. Open* 4:e2120725. doi: 10.1001/jamanetworkopen.2021.20725
- Takayama, W., Endo, A., Koguchi, H., Murata, K., and Otomo, Y. (2019). Differences in durations, adverse events, and outcomes of in-hospital cardiopulmonary resuscitation between day-time and night-time: An observational cohort study. *Resuscitation* 137, 14–20. doi: 10.1016/j.resuscitation.2019.01.023
- Tang, Z. R., He, Y. Q., and Guo, S. B. (2017). Research progress of cardiopulmonary resuscitation in 2016. *Chin. J. Crit. Care Med.* 37, 11–14. doi: 10.3969/j.issn.1002-1949.2017.01.003
- Wei, H. (2021). Analysis of factors related to prognosis of emergency cardiopulmonary resuscitation. *Clin. Res. Pract* 6, 27–29. doi: 10.19347/j.cnki.2096-1413.202112010
- Xu, S. Y., Zhu, H. D., and Yu, X. Z. (2019). The relationship between the outcome of cardiopulmonary resuscitation and the dosage of epinephrine in emergency department. *Chin. J. Crit. Care Med.* 39, 538–541. doi: 10.3969/j.issn.1002-1949.2019.06.003
- Xue, J. K., Leng, Q. Y., Gao, Y. Z., Chen, S. Q., Li, Z. P., Li, H. P., et al. (2013). Factors influencing outcomes after cardiopulmonary resuscitation in emergency department. *World J Emerg Med* 4, 183–189. doi: 10.5847/wjcm.j.issn.1920-8642.2013.03.005
- Yang, Z. Y., Huang, T. B., and Zhang, G. Y. (2016). Prognosis of emergency cardiopulmonary resuscitation and its influencing factors. *J. Chongqing Med. Univ.* 41, 1234–1238. doi: 10.13406/j.cnki.cyx.001100
- Zhang, T. L. (2020). Study on the characteristics and success-related factors of cardiopulmonary resuscitation in emergency elderly patients. *Chin. Foreign Med. Treat.* 39, 1–4. doi: 10.16662/j.cnki.1674-0742.2020.07.001
- Zhang, Y. K., Cui, X. P., Zhuang, J. Y., Sun, D., Xiao, Z., Huang, R. H., et al. (2018). Multiple factors analysis of the effect of cardiopulmonary resuscitation on cardiac arrest. *Med. Innovat. Chin.* 15, 97–100. doi: 10.3969/j.issn.1674-4985.2018.11.025
- Zhang, X. D., Luo, L., and Xiang, T. (2021a). Analysis of influence factors for mechanical compressions on return of spontaneous circulation and prognosis in patients with cardiac arrest. *Adv. Cardiovasc. Dis.* 42, 737–758. doi: 10.16806/j.cnki.issn.1004-3934.2021.08.016
- Zhang, C. Y., Meng, Y., Chi, F., Liang, J. Q., An, H. R., and Li, X. L. (2021b). Multiple factors analysis on the spontaneous circulation recovery after cardiopulmonary resuscitation in emergency department. *Hebei Med. J.* 43, 1009–1017. doi: 10.3969/j.issn.1002-7386.2021.07.010
- Zhao, F. T. (2017). Retrospective analysis of related factors affecting the success rate of pre hospital cardiopulmonary resuscitation. *Chin. Pract. Med.* 12, 94–96. doi: 10.14163/j.cnki.11-5547/r.2017.10.043
- Zhao, Z. J., Bai, W. M., and Xu, L. J. (2021). Effects of different cardiopulmonary resuscitation schemes on resuscitation success rate, blood gas analysis and blood indexes in patients with cardiac and respiratory arrest. *J. Med. Forum* 42, 18–21.
- Zhou, Y. X., Han, W. W., and Song, D. D. (2020). Factors affecting autonomic circulation and prognosis after cardiopulmonary resuscitation in patients with cardiac arrest. *J. Electrocardiol. Circulat.* 39, 251–255. doi: 10.12124/j.issn.2095-3933.2020.3.2020-3986
- Zhu, Z. X., Chen, S. J., Lin, W. W., Zhu, J. F., and Xu, Z. W. (2016). Study on the clinical effect of cardiopulmonary resuscitation machine and unarmed cardiopulmonary resuscitation. *Prevent. Treat. Cardiovasc. Dis.* 8, 4–6.

Conflict of Interest: The authors declare that the research was conducted in the absence of any commercial or financial relationships that could be construed as a potential conflict of interest.

Publisher's Note: All claims expressed in this article are solely those of the authors and do not necessarily represent those of their affiliated organizations, or those of the publisher, the editors and the reviewers. Any product that may be evaluated in this article, or claim that may be made by its manufacturer, is not guaranteed or endorsed by the publisher.

Copyright © 2022 An, Han, Wang, Chi, Meng, Zhang, Liang and Li. This is an open-access article distributed under the terms of the Creative Commons Attribution License (CC BY). The use, distribution or reproduction in other forums is permitted, provided the original author(s) and the copyright owner(s) are credited and that the original publication in this journal is cited, in accordance with accepted academic practice. No use, distribution or reproduction is permitted which does not comply with these terms.