



Effects of Polarized Training on Cardiometabolic Risk Factors in Young Overweight and Obese Women: A Randomized-Controlled Trial

OPEN ACCESS

Edited by:

Hassane Zouhal,
University of Rennes 2 – Upper
Brittany, France

Reviewed by:

Zhaowei Kong,
University of Macau, Macau
Leonardo Roever,
Federal University of Uberlândia, Brazil
Laurie Isacco,
University of Franche-Comté, France

*Correspondence:

Hugo Cerda-Kohler
hugocerda@meds.cl;
hugocerda@ug.uchile.cl

†These authors have contributed
equally to this work

Specialty section:

This article was submitted to
Exercise Physiology,
a section of the journal
Frontiers in Physiology

Received: 25 May 2018

Accepted: 27 August 2018

Published: 18 September 2018

Citation:

Zapata-Lamana R,
Henríquez-Olguín C, Burgos C,
Meneses-Valdés R, Cigarroa I,
Soto C, Fernández-Elías VE,
García-Merino S, Ramírez-Campillo R,
García-Hermoso A and
Cerda-Kohler H (2018) Effects
of Polarized Training on
Cardiometabolic Risk Factors
in Young Overweight and Obese
Women: A Randomized-Controlled
Trial. *Front. Physiol.* 9:1287.
doi: 10.3389/fphys.2018.01287

Rafael Zapata-Lamana^{1†}, Carlos Henríquez-Olguín^{2†}, Carlos Burgos²,
Roberto Meneses-Valdés², Igor Cigarroa³, Claudio Soto³, Valentín E. Fernández-Elías⁴,
Sonia García-Merino⁴, Rodrigo Ramírez-Campillo^{2,5}, Antonio García-Hermoso⁶ and
Hugo Cerda-Kohler^{2*}

¹ Escuela de Educación, Universidad de Concepción, Los Ángeles, Chile, ² Unidad de Fisiología Integrativa, Laboratorio de Ciencias del Ejercicio, Clínica MEDS, Santiago, Chile, ³ Escuela de Kinesiología, Facultad de Salud, Universidad Santo Tomás, Los Ángeles, Chile, ⁴ Department of Sport Science, European University of Madrid, Madrid, Spain, ⁵ Laboratorio de Medición y Evaluación Deportiva, Núcleo de Investigación en Salud, Actividad Física y Deporte, Departamento de Ciencias de la Actividad Física, Universidad de Los Lagos, Osorno, Chile, ⁶ Laboratorio de Ciencias de la Actividad Física, el Deporte y la Salud, Facultad de Ciencias Médicas, Universidad de Santiago de Chile, Santiago, Chile

Introduction: Volume and intensity are major variables governing exercise training-mediated beneficial effects in both athletes and patients. Although polarized endurance training optimizes and maximizes physiological gains in highly trained individuals, its cardiometabolic protective-effects have not been established. The purpose of the present single site, randomized-controlled trial was to compare the effects of 12-weeks of high-intensity interval training (HIIT), moderate-intensity continuous training (MICT), and polarized volume training (POL) programs on cardiometabolic risk factors in young overweight and obese women.

Materials and Methods: A total of 64 overweight/obese young women (age 23.3 ± 3.8 years, body mass index 33.8 ± 3.8 kg/m²) were randomly assigned to four groups: control group (CTRL), polarized volume training group, moderate-intensity endurance training group, and HIIT group. The cardiorespiratory capacity, glycemic and lipid profiles, whole-body substrate utilization, and body composition were assessed before and after the intervention.

Results: After the intervention, VO_{2peak} and power output at VO_{2peak} increased in all exercised-groups (time effect: $p < 0.0001$). Power output at VT1 was increased only in the POL group compared to the CTRL group ($p = 0.019$). Relative fold changes in fasting plasma glucose concentrations decreased only in POL group ($p = 0.002$). Training induced a significant increase in relative fat oxidation in all the groups (time effect: $p < 0.001$). Relative fat oxidation increased only in the POL group compared to the CTRL group (training effect: $p = 0.032$).

Conclusion: Twelve-weeks of polarized volume training showed overall superior effects on cardiorespiratory fitness, basal glycemic control, and substrate oxidation in comparison to MICT and HIIT training modalities. These data suggest that polarized volume training is an effective non-pharmacological treatment strategy for reducing cardiovascular disease risk factors in young overweight and obese women. The trial is registered at ISRCTN, number ISRCTN34421723.

Keywords: exercise, training modalities, obesity, cardiorespiratory fitness, metabolism

INTRODUCTION

Overweight and low cardiorespiratory fitness are independent risk factors associated with the development of chronic diseases and increased all-cause mortality (Wei et al., 2000; Myers et al., 2015; Ross et al., 2016). In developing countries, over-nutrition and physical inactivity are generally more prevalent among girls and women than their male counterparts (Case and Menendez, 2009; Kanter and Caballero, 2012). In woman, a high cardiorespiratory fitness ameliorates obesity-related comorbidities such as insulin resistance, dyslipidemia, and hypertension (Stevens et al., 2002; Evenson et al., 2004; Hu et al., 2004). Clinical training prescription is one of the most important non-pharmacological interventions to reverse poor cardiorespiratory fitness and improve metabolic health in women with obesity (Baillot et al., 2014; Pedersen and Saltin, 2015).

Training-stimulated physiological benefits are primarily dependent on the volume and intensity of the training stimulus (Dudley et al., 1982; Gormley et al., 2008). A substantial number of research studies have compared the effects of short bouts of high-intensity interval training (HIIT) and long bouts of moderate-intensity continuous endurance training (MICT) in athletes (Laursen, 2010; Ní Chéilleachair et al., 2017), healthy and clinical populations (Kessler et al., 2012; Mora-Rodriguez et al., 2014, 2016). Although the great debate comparing HIIT vs. MICT in training-induced health benefits, the evidence from athletes suggest that both high- and moderate-intensity training are required to maximize the physiological effect of training (Tønnessen et al., 2014; Stöggl and Sperlich, 2015).

The optimal training distribution reported in athletes implies training in accordance with the ~80–20 rule, i.e., ~70–80% of training volume near the lactate/ventilatory threshold intensity (i.e., MICT) and ~20–30% of training volume near the VO_{2max} (i.e., HIIT) (Tønnessen et al., 2014). In fact, compared to HIIT or MICT modalities alone, polarized training (POL) induces greater improvements in major endurance performance variables (e.g., VO_{2max} , lactate threshold) in well-trained athletes (Stöggl and Sperlich, 2014).

Given the current evidence is still in debate about the superior effects of HIIT or MICT in metabolic benefits of training in obese women (Keating et al., 2014, 2017; Weweg et al., 2017), POL training emerges as an alternative to improve the training-mediated outcomes in clinical populations. However, no studies have addressed the effect of a POL intervention in physical and metabolic health in non-athlete population.

The purpose of the present study was to compare the effects of 12-weeks of HIIT, MICT, or POL training programs on cardiorespiratory fitness, glucose, and lipids homeostasis, whole-body energy substrate oxidation, and body composition in young overweight and obese women. We hypothesized that, similar to athletes (Stöggl and Sperlich, 2014), greater training-induced adaptive responses would be observed after POL compared to either MICT or HIIT protocols.

MATERIALS AND METHODS

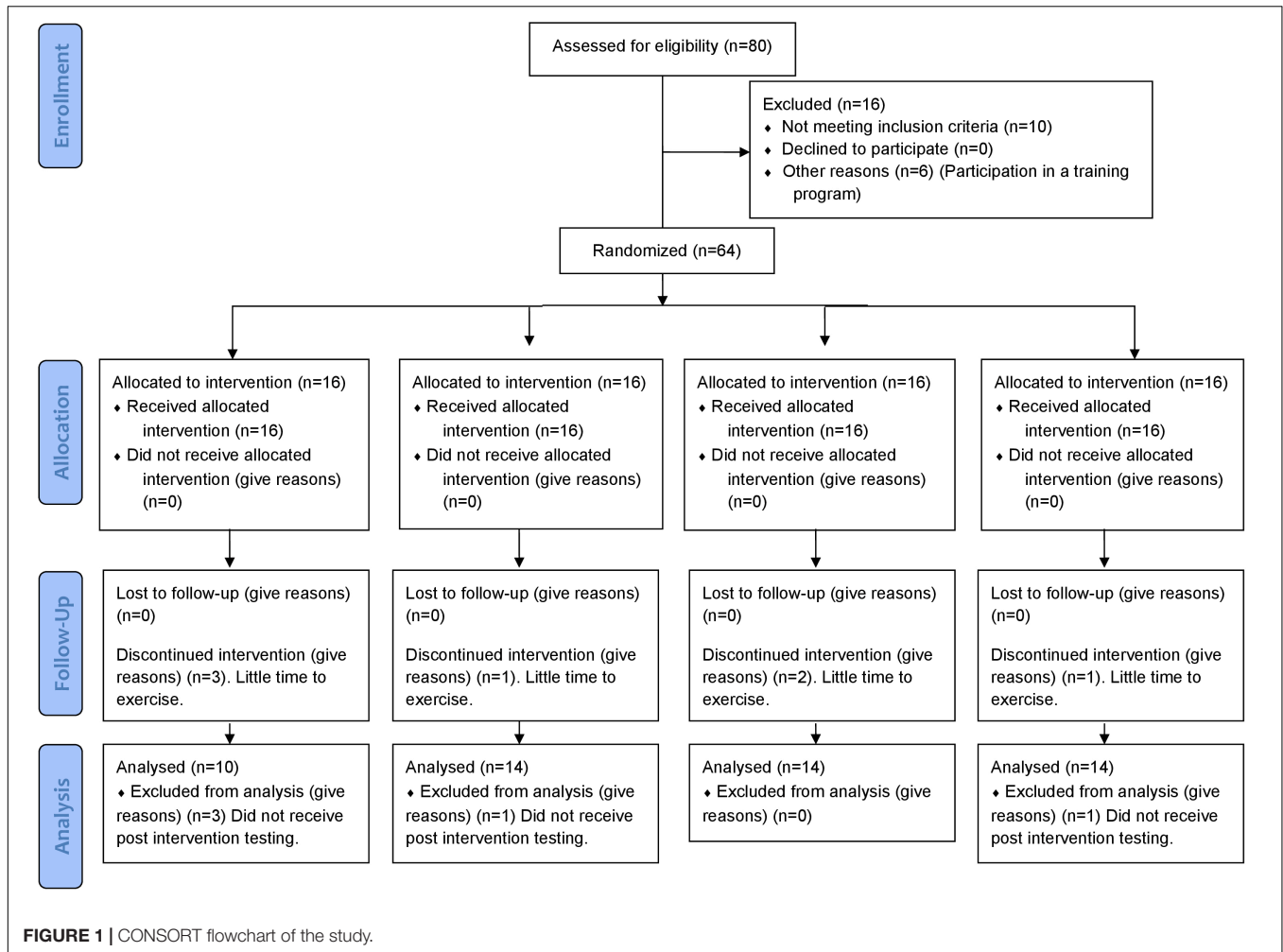
Participants Characteristics

The study took place at the facilities from Universidad de Concepción, Concepción, Chile, from May 2015 to December 2015 and the trial was retrospectively registered with <http://www.isrctn.com> in June 2016. Eighty women responded to the study invitation. Background information, medical history, family history of disease, and current health status were collected via self-reported survey questionnaires (Shephard, 2015).

The following criteria for inclusion were applied: age between 20 and 40 years, body mass index (BMI) between 25 and 40 kg/m², untrained (i.e., <2 h of physical activity/week), and being non-diabetic. Exclusion criteria were family history of stroke, hypertension, cardiovascular or respiratory disease, acute or chronic inflammatory diseases, digestive system surgery, use of thyroid hormone replacement, antidepressant consumption, pregnancy, and recent participation (i.e., less than 2 months) in training or diet interventions. After signing a written informed consent, 64 eligible young women were enrolled in the study. The Ethical Committee from Universidad de Concepción approved the study protocol (Number 2016-PI215136015-1.0IN), and all procedures were performed in compliance with the Declaration of Helsinki for human experiments. The authors confirm that all ongoing and related trials for this intervention are registered.

Study Design

The study was a 12-week, single site, parallel-group, randomized-controlled trial, designed to compare the effects of three training protocols on cardiorespiratory and cardiometabolic risk factors in young overweight and obese women. Participants were randomly assigned to four groups: control (CTRL, $n = 16$), polarized-based volume training (POL, $n = 16$), moderate-intensity endurance training (MICT, $n = 16$), and HIIT ($n = 16$) (Figure 1). The randomization process was performed using STATA 13.0 (StataCorp, College Station, TX, United States).



Pre-Post Testing

Participants (Table 1) were asked to arrive at the facilities between 07:00 and 10:00 in four different occasions before and after the intervention, with a minimum of 2 days between each visit. Participants were instructed to arrive the laboratory by minimal physical activity, well hydrated, and avoid any moderate-to-vigorous physical exercise for at least 48 h before testing. The sequence of the measurements was: (i) glycemic and lipid homeostasis, (ii) body composition, (iii) cardiorespiratory fitness assessment, and (iv) cycling trial at 60% of pVO_{2peak} . A standardized diet (60% carbohydrate, 25% fat, and 15% protein)

TABLE 1 | Basal characteristics before 12-weeks of intervention.

	CTRL	POL	MICT	HIIT
Age (years)	22.7 ± 3.2	21.8 ± 1.9	21.3 ± 1.4	21.2 ± 1.4
BMI ($kg.m^{-2}$)	33.2 ± 4.2	31.9 ± 2.0	32.2 ± 4.1	31.9 ± 3.0
HOMA-IR (units)	4.5 ± 1.9	4.3 ± 1.1	4.5 ± 1.4	4.4 ± 1.9
VO_{2peak} ($mL.kg^{-1}.min^{-1}$)	25.0 ± 4.0	24.5 ± 2.5	22.7 ± 3.1	25.3 ± 2.6

Data are shown as mean ± SD.

was prescribed by a dietitian for 1 week before baseline and post-training measurements.

Cardiorespiratory Fitness Assessment

After a 5-min warm-up at 50 watts, the participants performed a maximal incremental test on a cycle-ergometer (Monark, Stockholm, Sweden) according to criteria previously described (Bentley et al., 2007). An initial workload of 55 watts (W) was used, with increments of 15 W every 2 min until exhaustion. Gas exchange was recorded continuously with a portable breath-to-breath gas analyzer (Cortex Metalyzer 3B, Leipzig, Germany). The analyzer was calibrated according to the manufacturer's instructions before each trial. Pulmonary ventilation (VE), oxygen uptake (VO_2), expired carbon dioxide (VCO_2), and respiratory exchange ratio (RER) were averaged over 10 s in the mixing chamber mode, with the highest 30 s value (i.e., three consecutive 10 s averages) used in the analysis. VO_{2peak} was determined according to previously established criteria (Howley et al., 1995): (i) plateau in VO_2 (i.e., increase $<150 ml min^{-1}$), (ii) $RER > 1.1$, and (iii) $\geq 90\%$ of theoretical maximal heart rate. The VO_{2max} was expressed both as absolute values ($L.min^{-1}$) and relative to body mass ($ml.kg^{-1}.min^{-1}$). The power output at

$\text{VO}_{2\text{peak}}$ ($\text{pVO}_{2\text{peak}}$) was determined as the minimum workload at which $\text{VO}_{2\text{peak}}$ was reached. The ventilatory threshold 1 (VT1) was determined by the V-slope method (Beaver et al., 1986) and expressed in terms of power output at VT1 (pVT1).

Glycemic and Lipid Homeostasis

Participants were asked to arrive at the laboratory after an overnight fast and to abstain from moderate-to-vigorous physical exercise for at least 48 h before testing. Blood samples were drawn from an antecubital vein in resting subject for measurements in serum and plasma. Whole-body insulin sensitivity was estimated by an oral glucose tolerance test. For this test, subjects consumed a 75-g oral glucose load within 5 min. After that, blood samples were collected at 30 and 120 min for measurements of plasma glucose and insulin. Blood was immediately centrifuged to isolate and collect serum, and frozen at -80°C until analysis. Serum glucose (mg.dL^{-1}) assays were performed on an automated glucose analyzer (Sirus analyzer; Stanbio Laboratory, Boerne, TX, United States), and serum insulin ($\mu\text{U.ml}^{-1}$) was measured using an immunofluorescent method with an AIA-600 II analyzer (Tosoh Bioscience, South San Francisco, CA, United States) according to the manufacturer's instructions. Whole-body insulin sensitivity was estimated from the oral glucose tolerance test data using the modified insulin sensitivity index (ISI composite) (DeFronzo and Matsuda, 2010), calculated as $k/\text{sqrt}(G_0 \times I_0 \times G_{120} \times I_{120})$, where k ($=10,000$) is a constant, G_0 and G_{120} represent the plasma glucose concentrations at times 0 and 120 min, I_0 and I_{120} represent the plasma insulin levels at times 0 and 120 min, and sqrt is the mathematical function to calculate the square root. Insulin resistance was estimated using the Homeostasis Model for Assessment of Insulin Resistance (HOMA-IR), calculated as $[\text{fasting insulin } (\mu\text{U.ml}^{-1}) \times \text{fasting glucose } (\text{mmol.L}^{-1})]/22.5$ (Matthews et al., 1985). Total cholesterol, lipoprotein cholesterol [low-density lipoprotein (LDL), high-density lipoprotein (HDL), very-low-density lipoprotein (vLDL)] and triglycerides were determined via standard enzymatic-colorimetric assays run on a Cobas® 8000 modular analyzer series (Roche Diagnostic Corporation, Indianapolis, IN, United States). LDL and vLDL cholesterol were calculated from total cholesterol, HDL and triglyceride concentrations by applying the Friedewald's equation.

Whole-Body Substrate Utilization, Blood Lactate, Heart Rate, Pulmonary Ventilation, and the Rating of Perceived Exertion During Cycling Trial at 60% of $\text{pVO}_{2\text{peak}}$

The submaximal cycle testing was performed ≥ 2 days after the maximal incremental test. All subjects arrived for testing between 7:00 and 10:00 am after a 12-h overnight fast. Participants cycled at a constant cadence (i.e., 70–80 rpm) on a bicycle-ergometer (Monark, Stockholm, Sweden) for 30 min at 60% of $\text{pVO}_{2\text{peak}}$ (according to pre-training or post-training values). Gas exchange measurements were used to calculate whole-body lipid and carbohydrate oxidation according to the following equations

(Jeukendrup and Wallis, 2005):

Carbohydrate oxidation (g.min^{-1}):

$$4.585(\text{VCO}_2(\text{L}/\text{min})) - 3.226(\text{VO}_2(\text{L}/\text{min}))$$

Lipid oxidation (g.min^{-1}):

$$1.695(\text{VO}_2(\text{L}/\text{min})) - 1.701(\text{VCO}_2(\text{L}/\text{min}))$$

The comparison of substrate oxidation in the 30-min cycling trial was measured at 60% of $\text{pVO}_{2\text{peak}}$ of pre-training values and post-training values (Post-1) as previously described (Talanian et al., 2007). An additional trial was performed, adjusting the 60% of $\text{pVO}_{2\text{peak}}$ according to the maximal cardiorespiratory fitness after the training period (Post-2). Blood lactate values were obtained via a finger prick capillary blood sample immediately after the exercise trial. Samples were analyzed immediately for whole blood lactate concentration (mmol/l) using a standard enzymatic lactate analyzer (Venus, HP-Cosmos, Germany). For heart rate (bpm) measurements, a cardiac monitor (RS200; Polar, Kempele, Finland) was used, and the rating of perceived exertion (RPE) was evaluated and recorded immediately after exercise trial using the 10-point Borg scale (Borg, 1982). The participants were instructed on how to use the 10-point Borg scale and accustomed to the scale in the third visit (see section "Pre-Post Testing" for details). Determination of the RPE was assessed according to the AHA Scientific Statement (Myers et al., 2009). To evaluate and record the RPE, the participants were shown the scale and were asked "How would you rate your effort?"

Body Composition

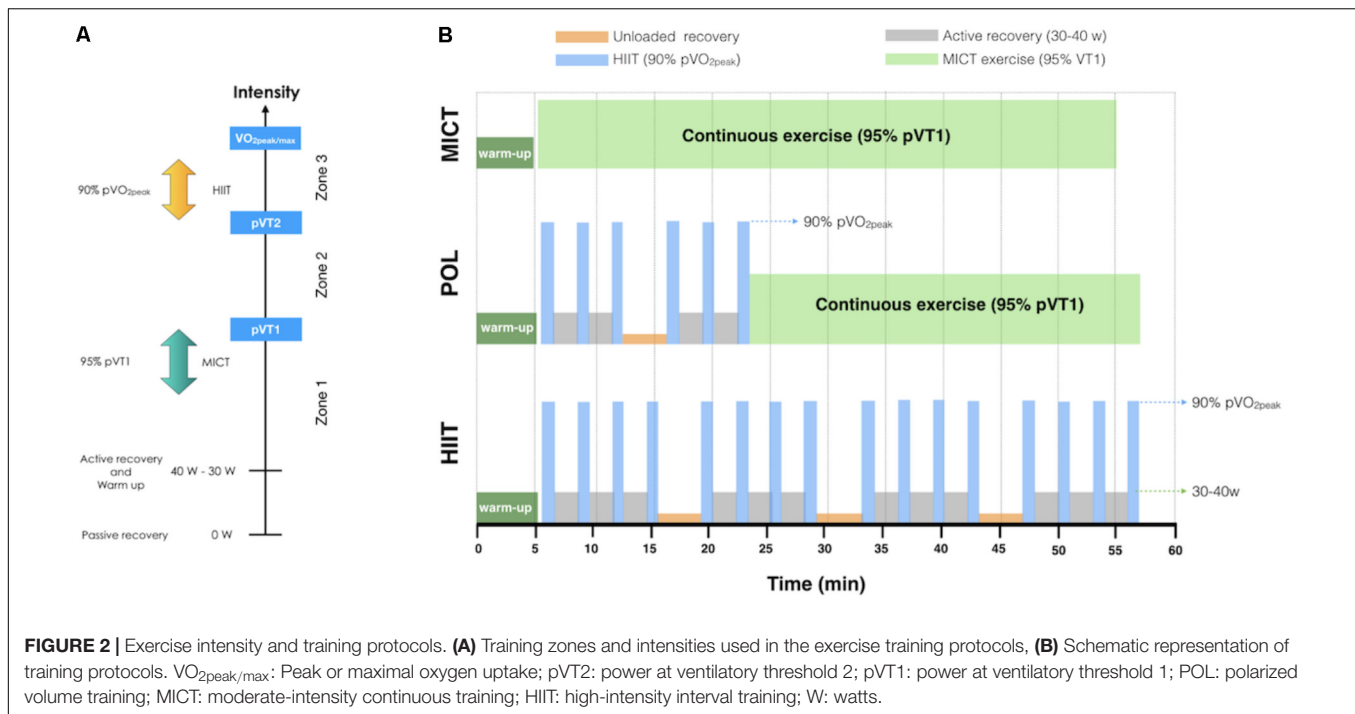
Total body mass and regional estimates of bone mass, bone mineral density, fat mass, lean mass, and body-fat % were determined by dual X-ray absorptiometry (DXA) using manufacturer-supplied algorithms (Total Body Analysis, version 3.6; Lunar, Madison, WI, United States) as previously described (Ramírez-Campillo et al., 2013). Subjects dressed in underwear and laid face-up on a DXA scanner table. Scanning was performed in 1-cm slices from head to toe using a 20-min scanning speed. The boundary between the arms and trunk was vertical (at shoulder level), whereas the boundary between the legs and trunk was angled. The precision of the measurement reported in these three regions is 1.5, 0.8, and 1.1% for the arms, legs, and trunk, respectively (Nindl et al., 2000).

Exercise Training Protocols

The training intervention consisted of 36 cycling sessions spread over 12 weeks (3 sessions/week) supervised by a professional trainer (Supplementary Table S1). All training sessions were carried out in the University facilities under conditions of standard temperature ($21 \pm 1^{\circ}\text{C}$) and humidity ($50 \pm 10\%$). After a 5-min warm up, the experimental groups performed the following training protocols (Figure 2).

CTRL Group

No training intervention was performed; the participants were instructed not to partake in any formal physical activity and diet modification.



POL Group

We adapted the previously described protocols for a clinical setting (Stöggl and Sperlich, 2015). In order to maintain the polarized pattern, the training protocol for the POL group aimed to conduct 70–80% of the total training volume at low-moderate intensity and 20–30% at high-intensity (Stöggl and Sperlich, 2014). For practical reasons, the moderate and high-intensity protocols were performed in every session, and not in a block periodization pattern as in athlete population (Stöggl and Sperlich, 2014). Each session consisted of 30 min of cycling exercise at a constant cadence (70–80 rpm) at 95% of pVT1; plus two sets of three bouts of 60 s cycling exercise at 90% pVO_{2peak} , with 2 min of active recovery between bouts (~30–40 W) and 4 min of unloaded recovery (backward pedaling on the cycle-ergometer) between sets.

MICT Group

The continuous training was performed according to a previously reported threshold model (Stöggl and Sperlich, 2014). Each training session consisted of 45–50 min of cycling exercise at a constant cadence (70–80 rpm) at 95% of pVT1.

HIIT Group

Four sets of four bouts of 60 s cycling exercise at 90% pVO_{2peak} , with 2 min of active recovery between bouts (~30–40 W) and 4 min of unloaded recovery (backward pedaling on the cycle-ergometer) between sets.

These protocols remained constant for every training session. The RPE was evaluated at the end of each training session. If the RPE (1 point) and mean heart rate (5–10 bpm) were decreased for two consecutive training sessions, then the power output for the intervals was increased by 5–10 W to maintain

training overload. For heart rate and RPE assessment we used the same methods as described above. Caloric intake was not standardized or controlled during the training intervention, but all the participants were instructed to maintain their regular dietary habits throughout the study.

Statistical Analysis

All data were expressed as mean \pm standard deviation (SD) or 95% confidence interval (CI), unless otherwise stated. Normality and sphericity assumptions were checked with the Shapiro–Wilk test and epsilon coefficient, respectively. Sphericity was corrected with the Greenhouse–Geisser correction method. If the normality assumption was violated, data were log-transformed to reduce bias arising from non-uniformity error (Hopkins et al., 2009). This was the case for relative carbohydrate oxidation, total carbohydrate oxidation, and total fat oxidation. The data were analyzed using mixed factorial ANOVAs, which included the between-subjects factor of training model (CTRL, POL, MICT, and HIIT groups) and the within-subjects factor of time (pre-training versus post-training, i.e., repeated measured analysis) to identify significant main and interaction effects. A Bonferroni's *post hoc* test for multiple comparisons was performed if a significant main effect was observed. Statistical significance was set at $p < 0.05$. Sample size ($n = 14$ per group) allows detection of a 37 watts change in pVO_{2peak} , which is in agreement with the study of Keating et al. (2014) with an alpha error of 0.05 and a power of 80%. As a complementary analysis, we assessed the magnitude of the effect of the intervention (within-subjects factor) via estimation of the size of an effect (ES) (Ialongo, 2016). Because the formula for Cohen's *d* gives a biased estimate of the ES, especially for small samples ($n < 20$), the magnitudes of change after training were calculated through the

corrected effect size (Hedges's g , with 95% CI) (Lakens, 2013). The following threshold values for ES were employed: <0.2 as trivial, ≥ 0.2 as small, ≥ 0.6 as moderate, ≥ 1.2 as large, ≥ 2.0 as very large, and ≥ 4.0 as extremely large (Stanley et al., 2015). If the confidence interval overlapped thresholds for substantial positive and negative values, the effect was deemed unclear (i.e., trivial). The correlation between variables was analyzed by Pearson's correlation coefficient (r). To construct confidence intervals for ES and r that does not depend on normality assumption, confidence intervals were calculated with non-parametric bootstrap according to Carpenter and Bithell (2000). A minimum training compliance of 80% was required to be included in the final statistical analysis. Statistical analysis was performed using STATA 13.0 (StataCorp, College Station, TX, United States).

RESULTS

We recruited 80 participants, of which 28 were excluded for various reasons (see CONSORT flowchart in **Figure 1**). The final analysis, therefore, included 52 patients, 10 in the CTRL group, 14 in the POL group, 14 in the MICT group, and 14 in the HIIT group.

Cardiorespiratory Fitness

Before exercise intervention, no differences were observed between groups for VO_{2peak} , pVO_{2peak} , or $pVT1$ (**Figures 3A–C**, respectively). After the intervention, VO_{2peak} increased significantly in all exercised-groups (time effect: $p < 0.0001$) with a very large ES for POL ($g = 2.6$ [1.5/3.8, 95% CI]), and for MICT ($g = 2.1$ [0.9/3.3, 95% CI]), and a large ES for the HIIT group ($g = 1.5$ [0.6/2.3, 95% CI]). As shown in **Figure 3B**, a significant increase in pVO_{2peak} was found for all exercised-groups (time effect: $p < 0.0001$) with a very large ES for POL ($g = 2.7$ [1.5/3.9, 95% CI]), for MICT ($g = 3.0$ [1.4/4.7, 95% CI]), and for the HIIT group ($g = 2.3$ [1.2/3.3, 95% CI]). When comparing

exercise-groups, POL was significantly superior vs. MICT group at increasing pVO_{2peak} (training effect: $p = 0.029$). Regarding $pVT1$ (**Figure 3C**), the values were significantly increased only in the POL group compared to the CTRL group ($p = 0.019$).

Blood Glucose, Insulin, and Lipid Profile

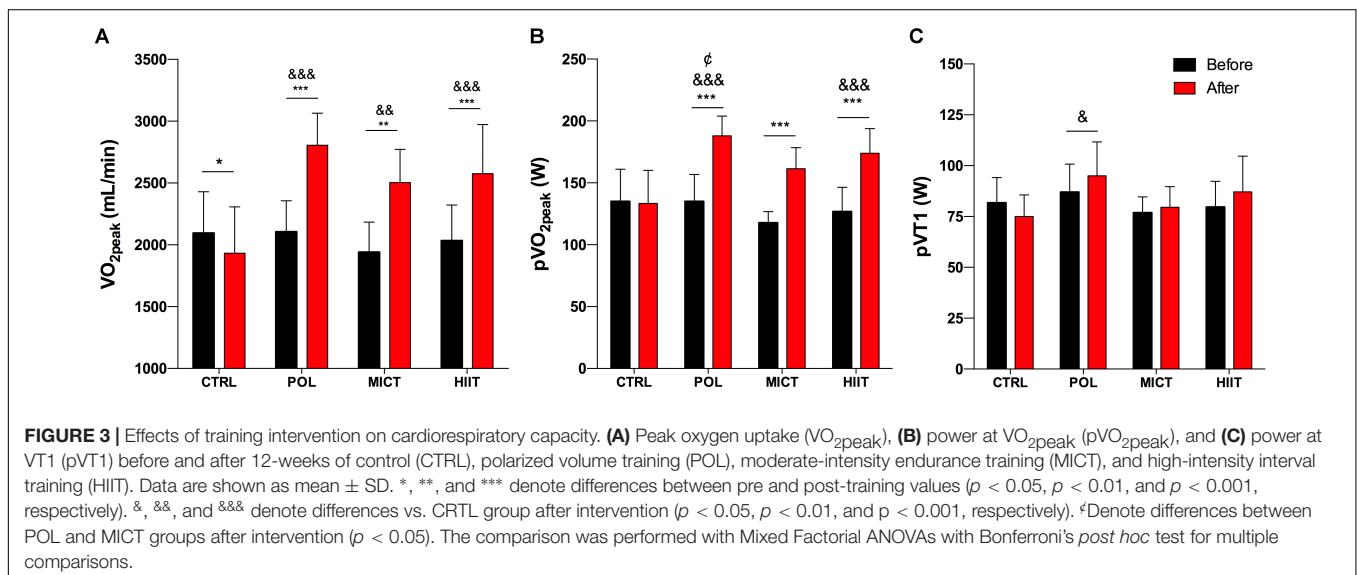
To study training-induced changes in glucose homeostasis, we measured fasting glucose and insulin before and after the intervention (**Supplementary Table S2**). As shown in **Figure 4A**, the relative change in fasting plasma glucose concentration decreased only significantly in the POL group ($p = 0.002$) with a large ES for POL ($g = -1.37$ [−2.2/−0.4, 95% CI]) and an unclear ES for MICT, HIIT, and CTRL group. Fasting plasma insulin (**Figure 4B**) showed a moderate ES for POL ($g = -1.10$ [−2.0/−0.1, 95% CI]) whereas no changes were found for HOMA-IR (**Figure 4C**) or insulin sensitivity index (**Figure 4D**).

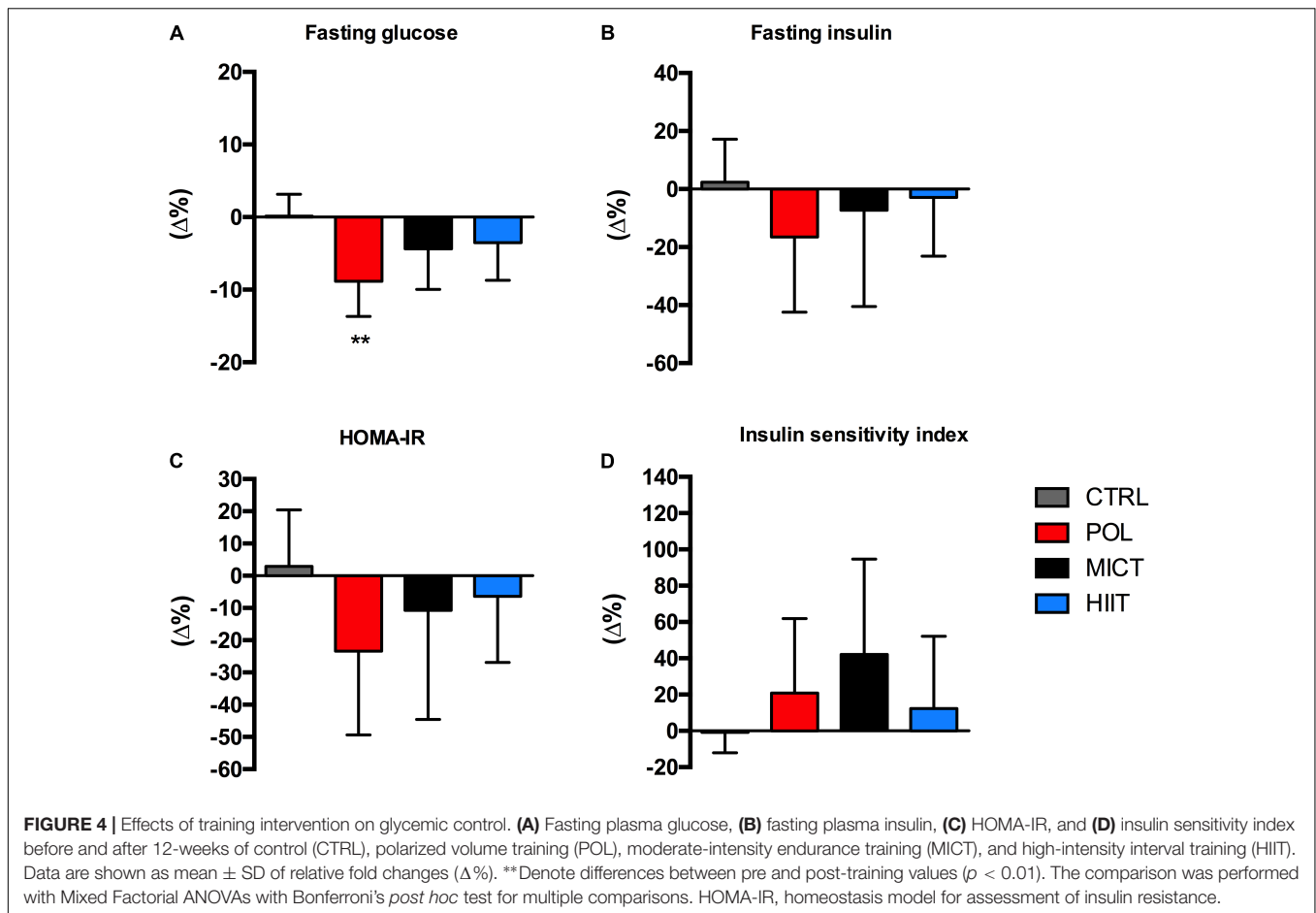
No differences were observed between the groups at baseline in any plasma lipid parameter (**Table 2**). After training, total cholesterol was not modified by any training modality. HDL decreased significantly in the HIIT group (time effect: $p = 0.013$). Interestingly, LDL and plasma triglycerides decreased significantly in the POL group but not in the MICT or HIIT groups (time effect: $p = 0.007$ and $p = 0.017$, respectively).

Whole-Body Substrate Utilization During Cycling at 60% of pVO_{2peak}

To study the changes in energy substrate utilization during exercise, participants performed 30 min of steady-state exercise at 60% of pVO_{2peak} before and after the intervention (**Figure 5** and **Supplementary Table S2**).

Training induced a significant increase in relative fat oxidation in all groups in Post-1 values (time effect: $p < 0.001$) with a large ES for POL ($g = 1.4$ [0.5/2.3, 95% CI]), for MICT ($g = 1.6$ [0.2/3.1, 95% CI]), and for the HIIT group ($g = 1.7$ [0.8/2.6, 95% CI]). Interestingly, relative fat oxidation increased significantly only in the POL group compared to the CTRL group (training effect:





$p = 0.032$). After adjusting the load to the new $pV\dot{O}_{2peak}$ measured after the intervention (Post-2), the relative fat oxidation increased significantly (time effect: $p = 0.004$, $p < 0.001$, $p = 0.016$; POL, MICT, and HIIT group, respectively) with a moderate ES for the HIIT group ($g = 1.0$ [0.2/1.9, 95% CI]) and an unclear ES for the POL, MICT, and CTRL groups. Moreover, a significant decrease was found in all exercised-groups in relative carbohydrate oxidation in Post-1 values (time effect: $p < 0.001$) with a large ES for POL ($g = -1.4$ [-2.6/-0.2, 95% CI]), and for MICT ($g = -1.6$ [-3.1/-0.2, 95% CI]), and a very large ES for the HIIT group ($g = -2.4$ [-3.6/-1.3, 95% CI]). Interestingly, only the POL group showed significant differences compared to the CTRL group after intervention (training effect: $p = 0.017$). Relative carbohydrate oxidation decreased significantly for Post-2 values in MICT and HIIT groups (time effect: $p = 0.008$ and $p = 0.016$, respectively) with a moderate ES for HIIT group ($g = -1.1$ [-2.0/-0.2, 95% CI]).

Cardiorespiratory Response, Blood Lactate, and RPE During Cycling at 60% of $pV\dot{O}_{2peak}$

Before the intervention, no differences were observed between groups for mean VE, mean HR, blood lactate, and RPE (Figures 6A–D, respectively).

After the training period, the mean HR values in Post-1 (Figure 6A) showed a significant decrease in the POL and MICT groups (time effect: $p < 0.001$; $p = 0.001$, respectively) with a moderate ES for POL ($g = -1.1$ [-2.1/-0.1, 95% CI]), and an unclear ES for MICT, HIIT, and CTRL groups. For the Post-2 values, mean HR increased significantly in the HIIT group (time effect: $p = 0.010$) with an unclear ES for all groups.

Mean VE in Post-1 values (Figure 6B) decreased significantly in all training groups (time effect: $p < 0.001$; $p < 0.001$; $p = 0.014$; POL, MICT, and HIIT group, respectively) with a large ES for MICT ($g = -2.1$ [-3.4/-0.8, 95% CI]), a moderate ES for the HIIT group ($g = -0.8$ [-1.6/-0.07, 95% CI]), and an unclear ES for the POL and CTRL groups. POL and MICT groups showed significant differences compared to the CTRL group after the intervention (training effect: $p = 0.001$ and $p = 0.002$, respectively). For the Post-2 values, the mean VE increased significantly in POL (time effect: $p < 0.001$) and HIIT (time effect: $p = 0.006$) with a large ES for POL ($g = 1.5$ [0.3/2.8, 95% CI]), and an unclear ES for the MICT and HIIT groups.

After the training period, a significant decrease in blood lactate (Figure 6C) was found in all exercised groups in Post-1 values (time effect: $p < 0.001$) with a very large ES for POL ($g = -2.6$ [-5.1/-0.2, 95% CI]), and a large ES for MICT ($g = -1.6$ [-2.6/-0.5, 95% CI]), and for the HIIT group ($g = -1.9$ [-3.1/-0.6,

TABLE 2 | Changes in plasma lipids after 12-weeks of intervention.

	Pre	Post (Δ vs. Pre)	Normal-based ES (95% CI)
Total cholesterol (mg.dL⁻¹)			
CTRL	178.5 ± 26.5	0.1 ± 2.9	0.01 (-1.0/1.0)
POL	177.9 ± 32.0	-9.7 ± 23.8	-0.26 (-1.2/0.7)
MICT	172.5 ± 36.1	-7.9 ± 19.2	-0.19 (-1.3/0.9)
HIIT	165.4 ± 29.5	-7.6 ± 19.2	-0.26 (-1.1/0.6)
HDL-cholesterol (mg.dL⁻¹)			
CTRL	54.8 ± 10.6	0.6 ± 2.5	0.05 (-0.9/1.1)
POL	50.9 ± 13.9	0.9 ± 6.5	0.05 (-0.8/0.9)
MICT	52.2 ± 11.5	-1.0 ± 6.0	-0.07 (-1.2/1.1)
HIIT	56.9 ± 12.7	-3.9 ± 3.6*	-0.28 (-1.1/0.6)
LDL-cholesterol (mg.dL⁻¹)			
CTRL	100.3 ± 20.8	0.1 ± 2.9	0.01 (-1.0/1.0)
POL	104.3 ± 27.3	-14.2 ± 16.0**	-0.58 (-1.5/0.3)
MICT	98.5 ± 26.2	-9.4 ± 23.7	-0.35 (-1.5/0.8)
HIIT	85.0 ± 26.7	-7.2 ± 14.4	-0.30 (-1.1/0.5)
Cholesterol ratio (Total/HDL)			
CTRL	3.3 ± 0.8	0.0 ± 0.1	0.03 (-1.0/1.0)
POL	3.6 ± 1.0	-0.2 ± 0.5	-0.20 (-0.7/1.1)
MICT	3.3 ± 0.4	-0.1 ± 0.3	-0.16 (-1.0/1.3)
HIIT	3.0 ± 0.7	0.1 ± 0.3	0.14 (-1.0/0.7)
Triglycerides (mg.dL⁻¹)			
CTRL	101.2 ± 23.2	-0.2 ± 2.7	-0.01 (-0.9/0.9)
POL	114.8 ± 33.7	-15.3 ± 21.1*	-0.42 (-1.5/0.6)
MICT	99.4 ± 32.7	-5.6 ± 9.9	-0.14 (-1.2/1.0)
HIIT	115.2 ± 58.9	4.0 ± 26.6	0.05 (-0.7/0.9)

Data are shown as mean ± SD. ES, effect size; CI, confidence interval; HDL, high-density lipoproteins; LDL, low-density lipoproteins. * and ** denote differences between pre and post-training values ($p < 0.05$ and $p < 0.01$, respectively). The comparison was performed with Mixed Factorial ANOVAs with Bonferroni's post hoc test for multiple comparisons.

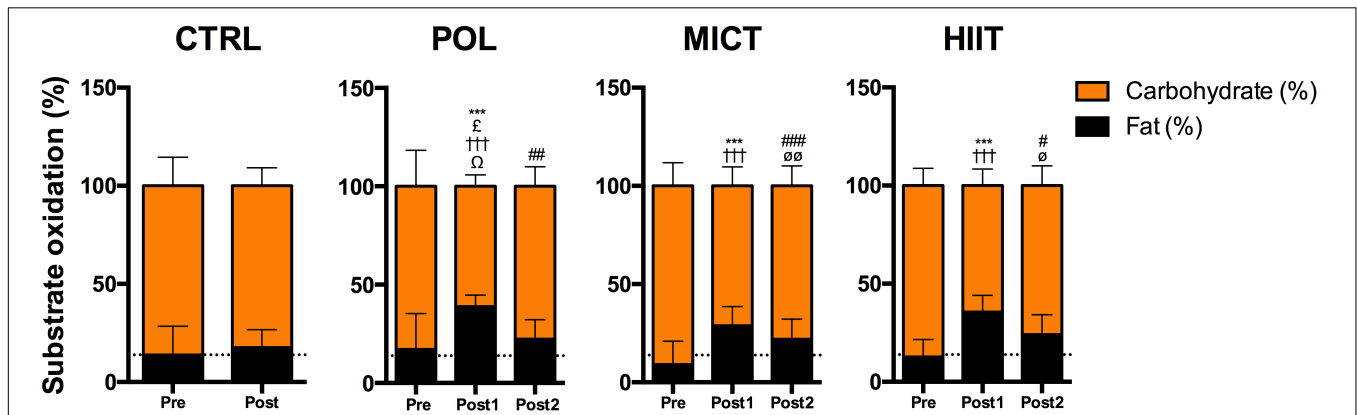
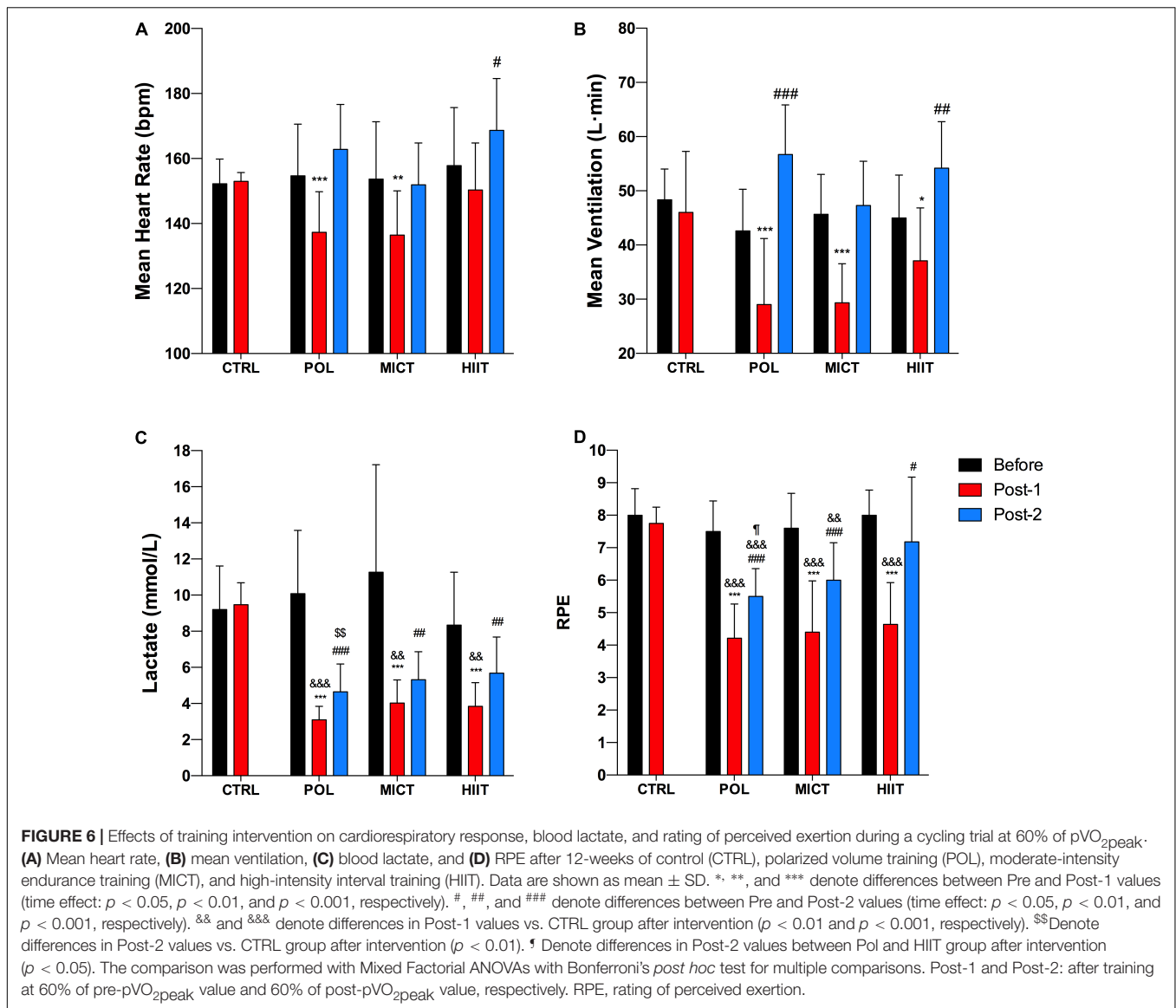


FIGURE 5 | Effects of training intervention on whole-body substrate utilization during a cycling trial at 60% of $pV_{O_{2peak}}$. Relative energy expenditure (%) from fat and carbohydrate oxidation before and after 12-weeks of control (CTRL), polarized volume training (POL), moderate-intensity endurance training (MICT), and high-intensity interval training (HIIT). Data are shown as mean ± SD. ***Denote differences between Pre and Post-1 values for fat oxidation (time effect: $p < 0.001$). ^ΩDenote differences in fat oxidation for Post-1 values between POL vs. CTRL group after intervention (training effect: $p < 0.05$). #, ## and ###Denote differences between Pre and Post-2 values for fat oxidation (time effect: $p < 0.05$, $p < 0.01$, and $p < 0.001$, respectively). †††Denote differences between Pre and Post-1 values for carbohydrate oxidation (time effect: $p < 0.001$). ^ΩDenote differences in carbohydrate oxidation for Post-1 values between POL vs. CTRL group after intervention (training effect: $p < 0.05$). ^{∞∞} and [∞] denote differences between Pre and Post-2 values for carbohydrate oxidation (time effect: $p < 0.001$). The comparison was performed with Mixed Factorial ANOVAs with Bonferroni's post hoc test for multiple comparisons. Post-1: 60% of $pV_{O_{2peak}}$ of pre-training values. Post-2: 60% of $pV_{O_{2peak}}$ according to the cardiorespiratory capacity after training period.



95% CI]). Additionally, the analysis showed significant differences between the POL, MICT, and HIIT group compared to the CTRL group after the intervention (training model effect: $p < 0.001$, $p = 0.001$, and $p = 0.001$, respectively). For the Post-2 values, blood lactate decreased significantly in all exercised groups compared to baseline (time effect: $p < 0.001$ for POL and MICT group, $p = 0.004$ for the HIIT group) with a very large ES for POL ($g = -2.0 [-3.3/-0.6, 95\% \text{ CI}]$), a large ES for MICT ($g = -1.3 [-2.1/-0.4, 95\% \text{ CI}]$), and a moderate ES for the HIIT group ($g = -1.0 [-1.8/-0.2, 95\% \text{ CI}]$). Interestingly, only POL group showed significant differences compared to the CTRL group after the intervention (training model effect: $p < 0.001$).

After the training period, a significant decrease in RPE (Figure 6D) was found in all exercised groups in Post-1 values (time effect: $p < 0.001$) with a very large ES for POL ($g = -3.1 [-4.3/-1.9, 95\% \text{ CI}]$), for MICT ($g = -2.2 [-3.8/-0.6, 95\% \text{ CI}]$), and for the HIIT group ($g = -3.0 [-4.1/-1.9, 95\% \text{ CI}]$), and an

unclear ES for the CTRL group. Our results showed significant differences between the POL, MICT, and HIIT groups compared to the CTRL group after the intervention (training model effect: $p < 0.001$). For the Post-2 values, RPE decreased significantly in all exercise-groups (time effect: $p < 0.001$ for POL and MICT group, $p = 0.018$ for HIIT group) with a very large ES for POL ($g = -2.1 [-3.1/-1.1, 95\% \text{ CI}]$), a large ES for MICT ($g = -1.3 [-2.3/-0.2, 95\% \text{ CI}]$), and an unclear ES for the HIIT group. Also, the results showed significant differences between the POL (training model effect: $p < 0.001$) and MICT groups (training model effect: $p = 0.009$) compared to the CTRL group after the intervention.

Changes in Body Weight and Body Composition

Before the intervention, no differences were observed between groups in total body mass, fat mass, and fat-free mass (Table 3).

TABLE 3 | Changes in body weight and body composition after 12-weeks of intervention.

	Pre	Post (Δ vs. Pre)	Normal-based ES (95% CI)
Total body mass (kg)			
CTRL	84.7 \pm 12.8	0.3 \pm 1.1	0.02 (–0.9/0.9)
POL	86.6 \pm 8.0	–3.7 \pm 3.4***	–0.45 (–1.3/0.4)
MICT	82.5 \pm 11.6	–1.9 \pm 2.6*	–0.14 (–1.2/0.9)
HIIT	84.7 \pm 11.9	–0.4 \pm 1.4	–0.03 (–0.9/0.8)
Fat mass (kg)			
CTRL	38.3 \pm 7.1	0.2 \pm 0.6	0.02 (–0.9/1.0)
POL	38.4 \pm 5.3	–3.0 \pm 3.7***	–0.59 (–1.4/0.2)
MICT	37.2 \pm 6.8	–1.7 \pm 2.8	–0.21 (–1.2/0.8)
HIIT	38.5 \pm 7.2	–1.2 \pm 1.3	–0.15 (–1.0/0.6)
Fat-free mass (kg)			
CTRL	43.4 \pm 6.3	0.0 \pm 0.5	0.00 (–0.9/0.9)
POL	44.6 \pm 3.8	0.2 \pm 1.0	0.04 (–0.7/0.8)
MICT	41.3 \pm 5.6	1.2 \pm 3.9	0.20 (–0.8/1.2)
HIIT	42.8 \pm 5.0	1.3 \pm 1.2	0.23 (–0.6/1.0)

Data are shown as mean \pm SD. ES, effect size; CI, confidence interval. * and *** denote differences between pre and post-training values ($p < 0.05$ and $p < 0.001$, respectively). The comparison was performed with Mixed Factorial ANOVAs with Bonferroni's post hoc test for multiple comparisons.

Total body mass decreased significantly in POL and MICT but not in the HIIT group (time effect: $p < 0.001$ and $p = 0.033$, respectively). Interestingly, fat mass decreased significantly only in the POL group (time effect: $p < 0.001$).

DISCUSSION

The present study showed for the first time that 12 weeks of polarized volume training is an effective exercise intervention to improve cardiorespiratory fitness and cardiometabolic profile in untrained young overweight and obese women, and further, it leads to greater adaptations in some metabolic health-related outcomes compared to pure MICT and HIIT training regimens. Thus, our data suggest that polarized-based volume training may be a more efficient training method than MICT and HIIT for young overweight and obese women concerning reversing and preventing cardiovascular and metabolic health problems.

Elevated cardiorespiratory fitness is a protective factor against obesity-related metabolic dysfunctions (Hamer and O'Donovan, 2010). Similar adaptations in $VO_{2max/peak}$ have been consistently reported after HIIT and MICT programs in obese/overweight patients (Ortega et al., 2015; Mora-Rodriguez et al., 2016; Batacan et al., 2017; Guadalupe-Grau et al., 2018). To our knowledge, we are the first to apply a polarized volume training program to an untrained and overweight population, and to show that POL training-induced superior cardiorespiratory fitness adaptations compared to MICT and HIIT training. Similar results have been reported in highly trained subjects regarding endurance performance after POL compared with high training volume or high intensity (Stöggl and Sperlich, 2014).

The training-induced changes in body composition without changes in energy intake are controversial. Most of the studies comparing HIIT and MICT have shown consistent small changes in body weight, fat mass, or fat-free mass (Martins et al., 2016;

Keating et al., 2017; Weweg et al., 2017). Similarly, our results show no differences between HIIT and MICT in body weight, lean or fat mass (Table 1). Interestingly, although POL training-induced changes in body composition did not differ from those induced by HIIT and MICT, it was the only type of exercise that significantly decreased fat mass after the exercise intervention. Nevertheless, a limitation of our study was the lack of dietary control. Participants were instructed to maintain their regular nutritional habits, but no record of food consumption was done. Therefore, although participants that performed POL training lost more weight than the HIIT or MICT groups, it cannot be asserted if POL training-induced more marked changes in body composition.

Exercise training is widely recognized as a therapeutic tool to improve glucose and insulin homeostasis in obese and insulin resistant states (Pedersen and Saltin, 2015). However, the optimal exercise-dose to reduce obesity-induced hyperglycemia and hyperinsulinemia have not been fully established. Previous studies have compared the effect of HIIT compared to MICT insulin sensitive surrogates with contradictory results (Mitranun et al., 2014; Fisher et al., 2015; Ortega et al., 2015; Cocks et al., 2016; De Lorenzo et al., 2018). We found that fasting glucose was reduced only in the POL group, without changes in fasting insulin, insulin sensitivity index or HOMA-IR. These results suggest that dietary intervention in combination with exercise is necessary to improve overall glucose and lipid homeostasis outcomes in obese patients (Christiansen et al., 2010).

Metabolic inflexibility is a key dysfunction in obesity-related diseases (Apostolopoulou et al., 2016; Goodpaster and Sparks, 2017), which is characterized an inability to appropriately switch between glucose and lipids as metabolic substrates. It was recently suggested that low fat oxidation and high plasma lactate levels during exercise are associated with metabolic inflexibility (San-Millán and Brooks, 2018). In the present study, all training programs reduced lactate levels during submaximal exercise

(**Figure 6C**). However, in the adjusted exercise trial (Post-2) blood lactate was significantly reduced only in the POL training group compared to the control group. Moreover, POL training increased fat oxidation compared to the control group during Post-1, while MICT and HIIT did not. Thus, it seems that POL training is a more efficient exercise strategy to reduce the metabolic inflexibility present in the overweight population. Regarding the RPE values (**Figure 6D**), all training groups improved this variable during Post-1 and Post-2 exercise after the training period. In addition, when comparing the Post-2 results, the POL group decreased their RPE values compared to the HIIT group, suggesting a superior improvement in exercise tolerance after POL training compared to HIIT, despite HIIT training comprising a greater high-intensity exercise volume. These data are in accordance with previous works comparing HIIT against lower intensity exercise modalities (Astorino et al., 2016; Silva et al., 2017), showing that HIIT training does not reduce RPE during a moderate-intensity exercise. Thus, POL training seems to be more efficient at improving exercise tolerance in untrained overweight women.

As previously reported in training studies, none of the training interventions changed total cholesterol levels (Hagan et al., 1986; Ortega et al., 2013; Guadalupe-Grau et al., 2018). Nevertheless, we found a significant decrease in LDL cholesterol and triglycerides levels after POL training, which may suggest a superior effect of combining MICT and HIIT exercise on lipids profile compared to either MICT or HIIT separately. We speculate that combining both exercise modalities lead to stimulation of both peripheral and central adaptations that together could have a greater impact on the blood lipid profile. Unfortunately, since we did not control food ingestion, we cannot discard dietary modifications as the cause of the decrease in LDL and triglycerides levels. Thus, future POL based exercise interventions controlling caloric ingestion are warranted.

Taken together, the results of our study suggest that polarized training is a novel training modality for patients with metabolic complications. Patients may get benefits performing a large volume of low-intensity exercise plus short intervals of high-intensity bouts to improve cardiometabolic health. Clinical exercise prescription could be simplified using training zones (zones 1, 2, and 3) derived from routine clinical physiological assessments as previously described in athletes (Seiler and Kjerland, 2006; Stöggl and Sperlich, 2014).

Limitations and Perspectives

The current study aims to investigate the effect of a POL training compared to MICT and HIIT in metabolic adaptations and cardiovascular risk factors in obese women. Despite our results show the benefits of POL training over HIIT and MICT, some limitations need to be acknowledged. The lack of dietary control limits the conclusions about POL training inducing more substantial weight loss than HIIT and MICT. Although the participants were instructed to maintain their habitual energy intake, the changes in body composition cannot be explained only by the intervention.

The effect of the menstrual cycle in responses to exercise in women has remained controversial. Some (Zđeric et al., 2001;

Nakamura et al., 2010) but not all (Horton et al., 2002; Vaiksaar et al., 2011) the studies have reported changes in substrate utilization according to the menstrual cycle phase. The current study did not address the menstrual cycle of the participants; therefore we are unable to determine whether the adaptations to the different training protocols can be affected by the menstrual cycle.

The combination of exercise modalities could modify the training-induced outcomes (Coffey and Hawley, 2017). The optimal exercise order to maximize training benefits in clinical populations remains to be further investigated. Moreover, the treatment adherence is a key factor determining training outcomes, and future research should determine the affective and enjoyment responses to POL training compared with other modalities.

CONCLUSION

The current study demonstrated that POL training elicits superior cardiorespiratory and metabolic adaptations compared to HIIT or MICT alone, since more profound improvements were found in exercise substrate oxidation and energy efficiency, perceived exertion after exercise, fasting glucose-insulin homeostasis, and the plasma lipid profile in young overweight and obese women.

Our data suggest that combination of HIIT and MICT in a polarized volume distribution could be a more effective exercise regimen compared to HIIT or MICT alone with regards to improving cardiorespiratory fitness and counteracting cardiometabolic risk associated with overweight and obesity.

AUTHOR CONTRIBUTIONS

RZ-L, CH-O, and HC-K contributed to the design of the study and drafted the manuscript for publication. RZ-L, RM-V, and CS contributed to data acquisition. CH-O and HC-K contributed to analysis and interpretation of the data. All authors contributed to critically reviewing the manuscript for intellectual content and gave final written approval of the manuscript for publication and agreed to be accountable for the accuracy and integrity of the data.

FUNDING

This study was supported by the Universidad de Concepción (#2016-PI215136015-1.0IN).

ACKNOWLEDGMENTS

We thank the whole staff of Universidad de Concepción, Universidad Santo Tomás, and Clínica MEDS for their

participation and for providing adequate supervision and monitoring of the study. We also thank Dr. Thomas E. Jensen, Department of Nutrition, Exercise and Sports, University of Copenhagen for his helpful comments and revising the paper for clarity.

REFERENCES

Apostolopoulou, M., Strassburger, K., Herder, C., Knebel, B., Kotzka, J., Szendroedi, J., et al. (2016). Metabolic flexibility and oxidative capacity independently associate with insulin sensitivity in individuals with newly diagnosed type 2 diabetes. *Diabetologia* 59, 2203–2207. doi: 10.1007/s00125-016-4038-9

Astorino, T. A., Schubert, M. M., Palumbo, E., Stirling, D., McMillan, D. W., Gallant, R., et al. (2016). Perceptual changes in response to two regimens of interval training in sedentary women. *J. Strength Cond. Res.* 30, 1067–1076. doi: 10.1519/JSC.0000000000001175

Baillet, A., Audet, M., Baillargeon, J. P., Dionne, I. J., Valiquette, L., Rosa-Fortin, M. M., et al. (2014). Impact of physical activity and fitness in class II and III obese individuals: a systematic review. *Obes. Rev.* 15, 721–739. doi: 10.1111/obr.12171

Batacan, R. B., Duncan, M. J., Dalbo, V. J., Tucker, P. S., and Fenning, A. S. (2017). Effects of high-intensity interval training on cardiometabolic health: a systematic review and meta-analysis of intervention studies. *Br. J. Sports Med.* 51, 494–503. doi: 10.1136/bjsports-2015-095841

Beaver, W. L., Wasserman, K., and Whipp, B. J. (1986). A new method for detecting anaerobic threshold by gas exchange. *J. Appl. Physiol.* 60, 2020–2027. doi: 10.1152/jap.1986.60.6.2020

Bentley, D. J., Newell, J., and Bishop, D. (2007). Incremental exercise test design and analysis: implications for performance diagnostics in endurance athletes. *Sports Med.* 37, 575–586. doi: 10.2165/00007256-200737070-00002

Borg, G. A. (1982). Psychophysical bases of perceived exertion. *Med. Sci. Sports Exerc.* 14, 377–381. doi: 10.1249/00005768-198205000-00012

Carpenter, J., and Bithell, J. (2000). Bootstrap confidence intervals: when, which, what? A practical guide for medical statisticians. *Stat. Med.* 19, 1141–1164. doi: 10.1002/(SICI)1097-0258(20000515)19:9<1141::AID-SIM479>3.0.CO;2-F

Case, A., and Menendez, A. (2009). Sex differences in obesity rates in poor countries: evidence from South Africa. *Econ. Hum. Biol.* 7, 271–282. doi: 10.1016/j.ehb.2009.07.002

Christiansen, T., Paulsen, S. K., Bruun, J. M., Ploug, T., Pedersen, S. B., and Richelsen, B. (2010). Diet-induced weight loss and exercise alone and in combination enhance the expression of adiponectin receptors in adipose tissue and skeletal muscle, but only diet-induced weight loss enhanced circulating adiponectin. *J. Clin. Endocrinol. Metab.* 95, 911–919. doi: 10.1210/jc.2008-2505

Cocks, M., Shaw, C. S., Shepherd, S. O., Fisher, J. P., Ranasinghe, A., Barker, T. A., et al. (2016). Sprint interval and moderate-intensity continuous training have equal benefits on aerobic capacity, insulin sensitivity, muscle capillarisation and endothelial eNOS/NAD(P)H oxidase protein ratio in obese men. *J. Physiol.* 594, 2307–2321. doi: 10.1113/jphysiol.2014.285254

Coffey, V. G., and Hawley, J. A. (2017). Concurrent exercise training: do opposites distract? *J. Physiol.* 595, 2883–2896. doi: 10.1113/JP272270

De Lorenzo, A., Van Bavel, D., de Moraes, R., and Tibiriça, E. V. (2018). High-intensity interval training or continuous training, combined or not with fasting, in obese or overweight women with cardiometabolic risk factors: study protocol for a randomised clinical trial. *BMJ Open* 8:e019304. doi: 10.1136/bmjopen-2017-019304

DeFronzo, R. A., and Matsuda, M. (2010). Reduced time points to calculate the composite index. *Diabetes Care* 33:e93. doi: 10.2337/dc10-0646

Dudley, G. A., Abraham, W. M., and Terjung, R. L. (1982). Influence of exercise intensity and duration on biochemical adaptations in skeletal muscle. *J. Appl. Physiol.* 53, 844–850. doi: 10.1152/jap.1982.53.4.844

Evenson, K. R., Stevens, J., Thomas, R., and Cai, J. (2004). Effect of cardiorespiratory fitness on mortality among hypertensive and normotensive women and men. *Epidemiology* 15, 565–572. doi: 10.1097/01.ede.0000129527.53181.c8

SUPPLEMENTARY MATERIAL

The Supplementary Material for this article can be found online at: <https://www.frontiersin.org/articles/10.3389/fphys.2018.01287/full#supplementary-material>

Fisher, G., Brown, A. W., Bohan Brown, M. M., Alcorn, A., Noles, C., Winwood, L., et al. (2015). High intensity interval- vs moderate intensity- training for improving cardiometabolic health in overweight or obese males: a randomized controlled trial. *PLoS One* 10:e0138853. doi: 10.1371/journal.pone.0138853

Goodpaster, B. H., and Sparks, L. M. (2017). Metabolic flexibility in health and disease. *Cell Metab.* 25, 1027–1036. doi: 10.1016/j.cmet.2017.04.015

Gormley, S. E., Swain, D. P., High, R., Spina, R. J., Dowling, E. A., Kotipalli, U. S., et al. (2008). Effect of intensity of aerobic training on VO₂max. *Med. Sci. Sports Exerc.* 40, 1336–1343. doi: 10.1249/MSS.0b013e31816c4839

Guadalupe-Grau, A., Fernández-Eliás, V. E., Ortega, J. F., Dela, F., Helge, J. W., and Mora-Rodríguez, R. (2018). Effects of 6-month aerobic interval training on skeletal muscle metabolism in middle-aged metabolic syndrome patients. *Scand. J. Med. Sci. Sports* 28, 585–595. doi: 10.1111/sms.12881

Hagan, R. D., Upton, S. J., Wong, L., and Whittam, J. (1986). The effects of aerobic conditioning and/or caloric restriction in overweight men and women. *Med. Sci. Sports Exerc.* 18, 87–94.

Hamer, M., and O'Donovan, G. (2010). Cardiorespiratory fitness and metabolic risk factors in obesity. *Curr. Opin. Lipidol.* 21, 1–7. doi: 10.1097/MOL.0b013e328331dd21

Hopkins, W. G., Marshall, S. W., Batterham, A. M., and Hanin, J. (2009). Progressive statistics for studies in sports medicine and exercise science. *Med. Sci. Sports Exerc.* 41, 3–13. doi: 10.1249/MSS.0b013e31818cb278

Horton, T. J., Miller, E. K., Glueck, D., and Tench, K. (2002). No effect of menstrual cycle phase on glucose kinetics and fuel oxidation during moderate-intensity exercise. *Am. J. Physiol. Endocrinol. Metab.* 282, E752–E762. doi: 10.1152/ajpendo.00238.2001

Howley, E. T., Bassett, D. R., and Welch, H. G. (1995). Criteria for maximal oxygen uptake: review and commentary. *Med. Sci. Sports Exerc.* 27, 1292–1301. doi: 10.1249/00005768-199509000-00009

Hu, F. B., Willett, W. C., Li, T., Stampfer, M. J., Colditz, G. A., and Manson, J. E. (2004). Adiposity as compared with physical activity in predicting mortality among women. *N. Engl. J. Med.* 351, 2694–2703. doi: 10.1056/NEJMoa042135

Ialongo, C. (2016). Understanding the effect size and its measures. *Biochem. Med.* 26, 150–163. doi: 10.11613/BM.2016.015

Jeukendrup, A. E., and Wallis, G. A. (2005). Measurement of substrate oxidation during exercise by means of gas exchange measurements. *Int. J. Sports Med.* 26(Suppl. 1), S28–S37. doi: 10.1055/s-2004-830512

Kanter, R., and Caballero, B. (2012). Global gender disparities in obesity: a review. *Adv. Nutr.* 3, 491–498. doi: 10.3945/an.112.002063

Keating, S. E., Johnson, N. A., Mielke, G. I., and Coombes, J. S. (2017). A systematic review and meta-analysis of interval training versus moderate-intensity continuous training on body adiposity. *Obes. Rev.* 18, 943–964. doi: 10.1111/obr.12536

Keating, S. E., Machan, E. A., O'Connor, H. T., Gerofi, J. A., Sainsbury, A., Catterton, I. D., et al. (2014). Continuous exercise but not high intensity interval training improves fat distribution in overweight adults. *J. Obes.* 2014:834865. doi: 10.1155/2014/834865

Kessler, H. S., Sisson, S. B., and Short, K. R. (2012). The potential for high-intensity interval training to reduce cardiometabolic disease risk. *Sports Med.* 42, 489–509. doi: 10.2165/11630910-000000000-00000

Lakens, D. (2013). Calculating and reporting effect sizes to facilitate cumulative science: a practical primer for t-tests and ANOVAs. *Front. Psychol.* 4:863. doi: 10.3389/fpsyg.2013.00863

Laursen, P. B. (2010). Training for intense exercise performance: high-intensity or high-volume training? *Scand. J. Med. Sci. Sports* 20(Suppl. 2), 1–10. doi: 10.1111/j.1600-0838.2010.01184.x

Martins, C., Kazakova, I., Ludviksen, M., Mehus, I., Wisloff, U., Kulseng, B., et al. (2016). High-intensity interval training and isocaloric moderate-intensity continuous training result in similar improvements in body composition and

- fitness in obese individuals. *Int. J. Sport Nutr. Exerc. Metab.* 26, 197–204. doi: 10.1123/ijsnem.2015-0078
- Matthews, D. R., Hosker, J. P., Rudenski, A. S., Naylor, B. A., Treacher, D. F., and Turner, R. C. (1985). Homeostasis model assessment: insulin resistance and beta-cell function from fasting plasma glucose and insulin concentrations in man. *Diabetologia* 28, 412–419. doi: 10.1007/BF00280883
- Mitranun, W., Deerochanawong, C., Tanaka, H., and Suksom, D. (2014). Continuous vs interval training on glycemic control and macro- and microvascular reactivity in type 2 diabetic patients. *Scand. J. Med. Sci. Sports* 24, e69–e76. doi: 10.1111/sms.12112
- Mora-Rodríguez, R., Ortega, J. F., Guio de Prada, V., Fernández-Eliás, V. E., Hamouti, N., Morales-Palomo, F., et al. (2016). Effects of simultaneous or sequential weight loss diet and aerobic interval training on metabolic syndrome. *Int. J. Sports Med.* 37, 274–281. doi: 10.1055/s-0035-1564259
- Mora-Rodríguez, R., Ortega, J. F., Hamouti, N., Fernández-Eliás, V. E., Cañete García-Prieto, J., Guadalupe-Grau, A., et al. (2014). Time-course effects of aerobic interval training and detraining in patients with metabolic syndrome. *Nutr. Metab. Cardiovasc. Dis.* 24, 792–798. doi: 10.1016/j.numecd.2014.01.011
- Myers, J., Arena, R., Franklin, B., Pina, I., Kraus, W. E., McInnis, K., et al. (2009). Recommendations for clinical exercise laboratories: a scientific statement from the American Heart Association. *Circulation* 119, 3144–3161. doi: 10.1161/CIRCULATIONAHA.109.192520
- Myers, J., McAuley, P., Lavie, C. J., Despres, J.-P., Arena, R., and Kokkinos, P. (2015). Physical activity and cardiorespiratory fitness as major markers of cardiovascular risk: their independent and interwoven importance to health status. *Prog. Cardiovasc. Dis.* 57, 306–314. doi: 10.1016/j.pcad.2014.09.011
- Nakamura, A., Osonoi, T., and Terauchi, Y. (2010). Relationship between urinary sodium excretion and pioglitazone-induced edema. *J. Diabetes Investig.* 1, 208–211. doi: 10.1111/j.2040-1124.2010.00046.x
- Ní Chéilleachair, N. J., Harrison, A. J., and Warrington, G. D. (2017). HIIT enhances endurance performance and aerobic characteristics more than high-volume training in trained rowers. *J. Sports Sci.* 35, 1052–1058. doi: 10.1080/02640414.2016.1209539
- Nindl, B. C., Harman, E. A., Marx, J. O., Gotshalk, L. A., Frykman, P. N., Lammi, E., et al. (2000). Regional body composition changes in women after 6 months of periodized physical training. *J. Appl. Physiol.* 88, 2251–2259. doi: 10.1152/jappl.2000.88.6.2251
- Ortega, J. F., Fernández-Eliás, V. E., Hamouti, N., and Mora-Rodríguez, R. (2013). Increased blood cholesterol after a high saturated fat diet is prevented by aerobic exercise training. *Appl. Physiol. Nutr. Metab.* 38, 42–48. doi: 10.1139/apnm-2012-0123
- Ortega, J. F., Fernández-Eliás, V. E., Hamouti, N., Pallarés, J. G., and Mora-Rodríguez, R. (2015). Higher insulin-sensitizing response after sprint interval compared to continuous exercise. *Int. J. Sports Med.* 36, 209–214. doi: 10.1055/s-0034-1389942
- Pedersen, B. K., and Saltin, B. (2015). Exercise as medicine - evidence for prescribing exercise as therapy in 26 different chronic diseases. *Scand. J. Med. Sci. Sports* 25(Suppl. 3), 1–72. doi: 10.1111/sms.12581
- Ramírez-Campillo, R., Andrade, D. C., Campos-Jara, C., Henríquez-Olguín, C., Alvarez-Lepín, C., and Izquierdo, M. (2013). Regional fat changes induced by localized muscle endurance resistance training. *J. Strength Cond. Res.* 27, 2219–2224. doi: 10.1519/JSC.0b013e31827e8681
- Ross, R., Blair, S. N., Arena, R., Church, T. S., Després, J.-P., Franklin, B. A., et al. (2016). Importance of assessing cardiorespiratory fitness in clinical practice: a case for fitness as a clinical vital sign: a scientific statement from the American Heart Association. *Circulation* 134, e653–e699. doi: 10.1161/CIR.0000000000000461
- San-Millán, I., and Brooks, G. A. (2018). Assessment of metabolic flexibility by means of measuring blood lactate, fat, and carbohydrate oxidation responses to exercise in professional endurance athletes and less-fit individuals. *Sports Med.* 48, 467–479. doi: 10.1007/s40279-017-0751-x
- Seiler, K. S., and Kjellerland, G. Ø. (2006). Quantifying training intensity distribution in elite endurance athletes: is there evidence for an “optimal” distribution? *Scand. J. Med. Sci. Sports* 16, 49–56. doi: 10.1111/j.1600-0838.2004.00418.x
- Shephard, R. J. (2015). Qualified fitness and exercise as professionals and exercise prescription: evolution of the PAR-Q and Canadian aerobic fitness test. *J. Phys. Act. Heal.* 12, 454–461. doi: 10.1123/jpah.2013-0473
- Silva, R., Damasceno, M., Cruz, R., Silva-Cavalcante, M. D., Lima-Silva, A. E., Bishop, D. J., et al. (2017). Effects of a 4-week high-intensity interval training on pacing during 5-km running trial. *Braz. J. Med. Biol. Res.* 50:e6335. doi: 10.1590/1414-431x20176335
- Stanley, J., Halliday, A., D’Auria, S., Buchheit, M., and Leicht, A. S. (2015). Effect of sauna-based heat acclimation on plasma volume and heart rate variability. *Eur. J. Appl. Physiol.* 115, 785–794. doi: 10.1007/s00421-014-3060-r1
- Stevens, J., Cai, J., Evenson, K. R., and Thomas, R. (2002). Fitness and fatness as predictors of mortality from all causes and from cardiovascular disease in men and women in the lipid research clinics study. *Am. J. Epidemiol.* 156, 832–841. doi: 10.1093/aje/kwfl14
- Stöggl, T., and Sperlich, B. (2014). Polarized training has greater impact on key endurance variables than threshold, high intensity, or high volume training. *Front. Physiol.* 5:33. doi: 10.3389/fphys.2014.00033
- Stöggl, T. L., and Sperlich, B. (2015). The training intensity distribution among well-trained and elite endurance athletes. *Front. Physiol.* 6:295. doi: 10.3389/fphys.2015.00295
- Talanian, J. L., Galloway, S. D. R., Heigenhauser, G. J. F., Bonen, A., and Spriet, L. L. (2007). Two weeks of high-intensity aerobic interval training increases the capacity for fat oxidation during exercise in women. *J. Appl. Physiol.* 102, 1439–1447. doi: 10.1152/japplphysiol.01098.2006
- Tønnessen, E., Sylta, Ø., Haugen, T. A., Hem, E., Svendsen, I. S., and Seiler, S. (2014). The road to gold: training and peaking characteristics in the year prior to a gold medal endurance performance. *PLoS One* 9:e101796. doi: 10.1371/journal.pone.0101796
- Vaiksaar, S., Jürimäe, J., Mäestu, J., Purge, P., Kalytko, S., Shakhlina, L., et al. (2011). No effect of menstrual cycle phase on fuel oxidation during exercise in rowers. *Eur. J. Appl. Physiol.* 111, 1027–1034. doi: 10.1007/s00421-010-1730-1
- Wei, M., Gibbons, L. W., Kampert, J. B., Nichaman, M. Z., and Blair, S. N. (2000). Low cardiorespiratory fitness and physical inactivity as predictors of mortality in men with type 2 diabetes. *Ann. Intern. Med.* 132, 605–611. doi: 10.7326/0003-4819-132-8-200004180-00002
- Wewege, M., van den Berg, R., Ward, R. E., and Keech, A. (2017). The effects of high-intensity interval training vs. moderate-intensity continuous training on body composition in overweight and obese adults: a systematic review and meta-analysis. *Obes. Rev.* 18, 635–646. doi: 10.1111/obr.12532
- Zderic, T. W., Coggan, A. R., and Ruby, B. C. (2001). Glucose kinetics and substrate oxidation during exercise in the follicular and luteal phases. *J. Appl. Physiol.* 90, 447–453. doi: 10.1152/jappl.2001.90.2.447

Conflict of Interest Statement: The authors declare that the research was conducted in the absence of any commercial or financial relationships that could be construed as a potential conflict of interest.

Copyright © 2018 Zapata-Lamana, Henríquez-Olguín, Burgos, Meneses-Valdés, Cigarroa, Soto, Fernández-Eliás, García-Merino, Ramírez-Campillo, García-Hermoso and Cerda-Köhler. This is an open-access article distributed under the terms of the Creative Commons Attribution License (CC BY). The use, distribution or reproduction in other forums is permitted, provided the original author(s) and the copyright owner(s) are credited and that the original publication in this journal is cited, in accordance with accepted academic practice. No use, distribution or reproduction is permitted which does not comply with these terms.