



OPEN ACCESS

EDITED BY

Aristides Dokoumetzidis,
National and Kapodistrian University of Athens,
Greece

REVIEWED BY

Mathangi Gopalakrishnan,
University of Maryland, United States
Jiao Zheng,
Shanghai Jiao Tong University, China

*CORRESPONDENCE

Dongfang Wu,
✉ dfwu2010@whu.edu.cn

†These authors have contributed equally to
this work

RECEIVED 30 January 2024

ACCEPTED 15 April 2024

PUBLISHED 02 May 2024

CITATION

Wu J, Zheng X, Zhang L, Wang J, Lv Y, Xi Y and
Wu D (2024), Population pharmacokinetics of
intravenous daptomycin in critically ill patients:
implications for selection of dosage regimens.
Front. Pharmacol. 15:1378872.
doi: 10.3389/fphar.2024.1378872

COPYRIGHT

© 2024 Wu, Zheng, Zhang, Wang, Lv, Xi and Wu.
This is an open-access article distributed under
the terms of the [Creative Commons Attribution
License \(CC BY\)](https://creativecommons.org/licenses/by/4.0/). The use, distribution or
reproduction in other forums is permitted,
provided the original author(s) and the
copyright owner(s) are credited and that the
original publication in this journal is cited, in
accordance with accepted academic practice.
No use, distribution or reproduction is
permitted which does not comply with these
terms.

Population pharmacokinetics of intravenous daptomycin in critically ill patients: implications for selection of dosage regimens

Jianhua Wu[†], Xiangyi Zheng[†], Liu Zhang, Jiajun Wang, Yifei Lv, Yujie Xi and Dongfang Wu^{*}

Department of Pharmacy, Zhongnan Hospital of Wuhan University, Wuhan, China

Daptomycin is gaining prominence for the treatment of methicillin-resistant *Staphylococcus aureus* infections. However, the dosage selection for daptomycin in critically ill patients remains uncertain, especially in Chinese patients. This study aimed to establish the population pharmacokinetics of daptomycin in critically ill patients, optimize clinical administration plans, and recommend appropriate dosage for critically ill patients in China. The study included 64 critically ill patients. Blood samples were collected at the designated times. The blood daptomycin concentration was determined using validated liquid chromatography-tandem mass spectrometry. A nonlinear mixed-effects model was applied for the population pharmacokinetic analysis and Monte Carlo simulations of daptomycin. The results showed a two-compartment population pharmacokinetic model of daptomycin in critically ill adult Han Chinese patients. Monte Carlo simulations revealed that a daily dose of 400 mg of daptomycin was insufficient for the majority of critically ill adult patients to achieve the anti-infective target. For critically ill adult patients with normal renal function (creatinine clearance rate >90 mL/min), the probability of achieving the target only reached 90% when the daily dose was increased to 700 mg. For patients undergoing continuous renal replacement therapy (CRRT), 24 h administration of 500 mg met the pharmacodynamic goals and did not exceed the safety threshold in most patients. Therefore, considering its efficacy and safety, intravenous daptomycin doses are best scaled according to creatinine clearance, and an increased dose is recommended for critically ill patients with hyperrenalism. For patients receiving CRRT, medication is recommended at 24 h intervals.

KEYWORDS

daptomycin, population pharmacokinetics, nonlinear mixed-effects model, dose selection, critically ill patients

Introduction

Daptomycin is a cyclic lipopeptide antibiotic with novel antimicrobial targets and rapid bactericidal activity against a wide range of Gram-positive bacteria (Silverman et al., 2003; Hobbs et al., 2008), including methicillin-resistant *Staphylococcus aureus* (MRSA) (Bush et al., 1989) and vancomycin-resistant enterococci (Amsterdam et al., 1994; Metzger et al., 2009; Mohr et al., 2009). It has been approved for the treatment of skin and soft tissue infections and bacteremia, including cases associated with right-sided infective endocarditis

(Heidary et al., 2018). The European Society for Clinical Microbiology and Infectious Diseases states in the empirical treatment of MRSA infections that daptomycin should be chosen as the first-line treatment when renal impairment or fatal sepsis is present in patients (Gould et al., 2011). Meanwhile, in the treatment of persistent MRSA bacteremia, daptomycin is more effective if the minimal inhibitory concentration (MIC) of vancomycin is over 1 µg/mL (Moore et al., 2012; Murray et al., 2013).

Daptomycin is a hydrophilic drug with a small distribution volume (0.1 L/kg) and a high protein binding rate (90%–93%) (Benvenuto et al., 2006; Gregoire et al., 2021). Daptomycin is not metabolized by liver enzymes (Dvorchik et al., 2004) and is mainly eliminated by the kidneys (78%) (Enoch et al., 2007), with a half-life of approximately 8 h (Hawkey, 2008). Daptomycin exhibits concentration-dependent bactericidal activity (Safdar et al., 2004) and its area under the curve (AUC)/MIC ratio is the most relevant pharmacokinetic/pharmacodynamic (PK/PD) index of efficacy (Louie et al., 2001). According to available studies, daptomycin $AUC_{24h}/MIC \geq 666$ can be used as a target for therapeutic success against *S. aureus* infections (Falcone et al., 2013), C_{min} can be used to monitor the muscle toxicity of daptomycin with a target value less than 24.3 mg/L (Tally and DeBruin, 2000; Bhavnani et al., 2010), and $AUC_{24h}/MIC < 1422$ has also been studied as a safety threshold (Xie et al., 2020).

Critically ill patients are at a high risk of developing life-threatening infection (Dimopoulos et al., 2013) that could result in multiple organ derangements and sepsis (Blot et al., 2014), and are therefore often treated with a combination of organ-supportive therapies, such as continuous renal replacement therapy (CRRT) and extracorporeal membrane oxygenation (ECMO). The PK/PD properties of antibiotics are affected by pathophysiological changes in critically ill patients caused by various factors, such as increased distribution volume (Blot et al., 2014), augmented renal clearance (Udy et al., 2010), altered plasma protein binding (Smith et al., 2012), excretion via CRRT (Kielstein et al., 2010), and sequestration in the ECMO circuit (Shekar et al., 2015). There are no definitive conclusions regarding the dosage of daptomycin administered to critically ill patients; the dosages recommended by various authors range from 6 mg/kg every 48 h to 10 mg/kg every 24 h (Gregoire et al., 2021); some authors have also suggested that different doses of daptomycin should be used at different pathophysiological stages, which may be due to the large PK variability in critically ill patients and the small sample size of previous studies. In this case, a population pharmacokinetic (PPK) model can be used to identify and quantify the variability and then determine the optimal medication administration regimen for each patient. Hence, we collected data from 64 patients at 737 sampling points to develop a PPK model for critically ill Han Chinese patients and seek other appropriate drug recommendations.

Materials and methods

Patients and ethics

This study was approved by the Ethics Committee of Zhongnan Hospital of Wuhan University (No. LYL2019018). Informed consent was obtained from the legal representatives of the patients before enrolment.

Plasma samples were collected from patients who received an intravenous infusion of daptomycin in the intensive care unit (ICU) of Zhongnan Hospital of Wuhan University from April 2021 to December 2022 according to the inclusion and exclusion criteria and the clinical sample sampling protocol for blood drug concentration testing. Patients who fulfilled the following criteria were eligible: ≥ 18 years old; treated with daptomycin for proven/probable infections caused by Gram-positive organisms that were unresponsive or intolerant to other antimicrobial agents. The exclusion criteria were pregnancy, known or suspected hypersensitivity to daptomycin and its excipients, and incomplete or missing laboratory data before and after treatment.

Demographic and clinical characteristics of the enrolled patients were also collected from the medical records, including age, sex, weight, diagnosis, comorbidities, outcome, combination of other drugs (including antimicrobials), daily complete blood counts, biochemical test results (including liver and renal function and creatinine phosphokinase (CPK)), and whether CRRT or ECMO therapy was performed. In addition, acute physiology and chronic health evaluation (APACHE) and sequential organ failure assessment (SOFA) scores were calculated for each patient to determine disease severity. The patient's creatinine clearance (CL_{CR}) was calculated according to the Cockcroft-Gault formula based on serum creatinine at steady state on day 3.

Daptomycin administration and sample collection

Daptomycin (Jiangsu Hengrui Medicine Co., Ltd.) dissolved in 100 mL normal saline was administered as a 30-min infusion. The daptomycin dose was 500 mg every 24 h. To obtain a complete blood drug concentration time curve after administration, we took into account the equilibrium phase (near peak concentration) and elimination phase of the drug in the design of sampling time points. On the first day of administration, blood samples were collected at 0, 0.5, 1, 2, 4, 8, 12, and 24 h after infusion. On the third day of administration, blood samples were collected before administration and at 0, 0.5, 1, 2, 4, 8, 12, and 24 h after infusion. On the fifth and seventh days, blood samples were collected before administration and at 0.5 and 4 h after infusion. Blood was drawn and allowed to clot in yellow blood-collecting tubes containing separating glue and a coagulant accelerator. Serum was collected by centrifugation and stored at -80°C until assayed. As soon as the study dose was administered, the participants were monitored for potential side effects. Serious adverse events were defined as adverse events related to daptomycin that required treatment discontinuation.

Measurement of daptomycin serum concentrations

Serum daptomycin concentrations were measured using a high-performance liquid chromatography-tandem mass spectrometry method developed in our laboratory, the lower limit of quantification was $0.05 \mu\text{g mL}^{-1}$. Briefly, serum samples were analyzed after protein precipitation. Daptomycin-d5 (Beijing

Hager Biotechnology Co., Ltd.) was used as an internal standard. A Waters ACQUITY UPLC C8 column (2.1 mm × 50 mm, 1.7 μm) was used for separation. The mobile phase consisted of phase A: water (0.1% formic acid), phase B: 1:1 methanol: acetonitrile (0.1% formic acid) at a flow rate of 0.4 mL min⁻¹, column temperature of 45°C, injection volume of 2 μL, and analysis time of 4 min. Ion transitions were performed using positive electrospray ionization in the multiple reaction monitoring mode.

Before measurement, the sample was restored to room temperature, 100 μL of 1:1 methanol: acetonitrile was measured into a 1.5 μL EP tube, then 10 μL of daptomycin-d5 with 40 μL of sample/standard/quality control was added, the sample was vortex shaken for 1 min, centrifuged at high speed for 8 min (14,500 r/min), and the supernatant was placed in a 96-well plate for the assay.

Daptomycin pharmacokinetic and data analysis

NONMEM (version 8.1; ICON Development Solutions, Hanover, MD, United States) was used to establish a population PK model for daptomycin and to perform Monte Carlo simulations (Bauer et al., 2007). The ADAPT-TRAN program was used for pre- and post-processing (Savic et al., 2009). This study explored one- and two-compartment models of population PK of daptomycin. The two-compartment, disposition model was parameterised in terms of total clearance (CL), volume of distribution in the central compartment (V_C), volume of distribution in the peripheral compartment (V_P), and intercompartmental clearance (Q). The first order conditional estimation with inter- and intra-subject variability interaction (FOCE-I) was employed for all model runs. The inter-individual variability (η) was described using lognormal distributions, and a mixed additive and proportional model was chosen for residual variability (ε). Additionally, the importance of the off-diagonal elements of the omega variance-covariance matrix was investigated. We explored the potential effects of candidate covariates on daptomycin disposal. The main variables included body size (body Mass Index [BMI] and body weight [WT]), age, sex, creatinine clearance (CCR), albumin concentration, SOFA and APACHE II scores for daptomycin clearance (CL), and the effects of WT and sex on volume of distribution.

Stepwise screening of the covariates was performed using Perl Speaks NONMEM (version 5.3.0; Uppsala University Pharmacometrics Research Group, SE), including both forward inclusion and backward elimination processes. The level of significance for keeping the covariates in the model was set at 0.05 and 0.01, respectively.

Model evaluation

The model development and evaluation were guided on the basis of goodness-of-fit plots and parameter estimate precision. Moreover, a visual predictive check (VPC) was carried out to confirm that model simulations could reproduce the observed data. Bootstrap analysis with 1000 samples was used to evaluate the accuracy of the parameter estimation.

Monte Carlo simulations of dosage regimens

NONMEM software was used to simulate 1000 virtual subjects to assess the inter-subject variability (BSV) with different clinical doses (400, 500, 600, and 700 mg) for half an hour in patients with different renal function levels (creatinine clearance rates were 20, 30, 40, 60, 90, 120 mL/min).

Statistical analysis

The Kolmogorov-Smirnov test was employed to assess whether data were normally or non-normally distributed. Continuous variables are presented as means ± standard deviations if normally distributed and as median with IQR if abnormally distributed. Categorical variables were compared by the χ² test while continuous variables were compared using the Student's t-test or Mann-Whitney test.

Results

General information and statistics

This study included 64 critically ill patients (43 males and 21 females), with no significant differences found between males and females. The specific information of all patients is shown in Table 1. Sixty-three patients weighed 45–90 kg, whereas the remaining patient was extremely obese (170 kg). Among them, 39 patients received CRRT, and different patients used different hemodialysis filters. Among these, 17 patients used the MultiFiltrate Kit Ci-Ca AV1000S (Fresenius Pharmaceuticals, Bad Homburg vor der Höhe, Germany; membrane area 1.8 m²); two patients were treated with Ultraflux AV600S (Fresenius Pharmaceuticals; membrane area 1.4 m²), and 20 were treated with Prismaflex M100AN69 (BAXTER Baite International Limited, Jinbao; membrane area 0.9 m²). The blood flow rate was maintained between 95 and 350 mL/min, and the effluent flow was maintained between 1600 and 2000 mL/h and replaced as clinically indicated. Among these 45 CRRT patients, four used ECMO in combination. In addition, two patients received ECMO alone. No increase in CPK or other adverse reactions related to daptomycin were observed in any of the patients during the treatment period. A total of 737 blood concentration values were included in the population PK analysis, and the serum concentration-time curves of all blood samples are shown in Figure 1.

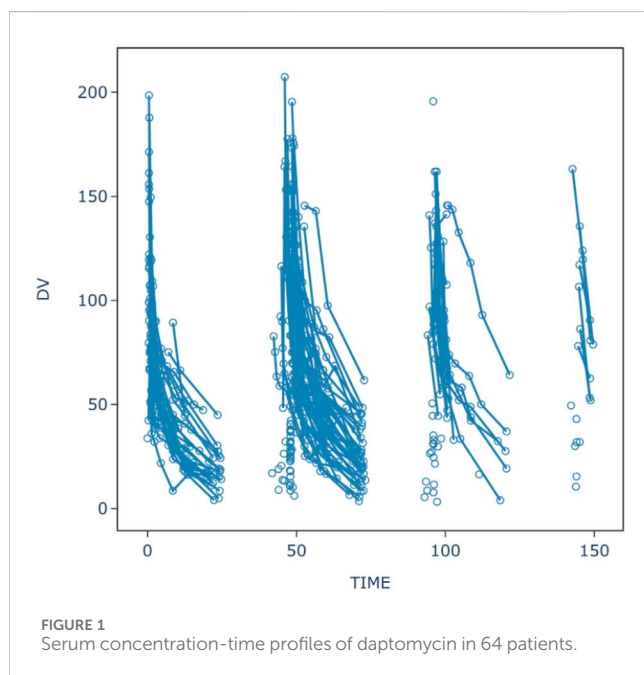
Pharmacokinetic models and factors affecting them

One- and two-compartment models were fitted separately, and the results of the objective function value (OFV) and goodness-of-fit plots showed that the time course of daptomycin concentration was well described by a two-compartment linear model with linear elimination. Unexplained residual variability was best described by additive

TABLE 1 Patient characteristics.

Characteristics	n (%) or median (IQR)
Age (years)	57.5 ± 16.5
Sex	
Male	43(67.2%)
Female	21(32.8%)
Weight (kg)	64.5(45–170)
Body mass index (kg/m ²)	23.0(16.5–52.5)
Serum creatinine (μmol/L)	106(21.7–845.4)
Creatinine clearance (mL/min)	54.25(8.3–200.2)
With renal replacement therapy	
CRRT	39(60.9%)
No CRRT	25(39.1%)
With ECMO	6(9.4%)
only ECMO	2(3.1%)
ECMO with CRRT	4(6.3%)
Albumin (g/L)	32.8(19.6–46.8)
Total proteins (g/L)	54.2(37.1–573)
Alanine transaminase (U/L)	63(8–2581)
Aspartate transaminase (U/L)	71(11–3845)
Total bilirubin (μmol/L)	35.3(5.2–312)
APACHE II score	24(12–47)
SOFA score	12(4–19)

Categorical variables are denoted as n (%) and the remaining variables are denoted as median (range).



and proportional residual error models. CCR had a significant effect on renal clearance in non-CRRT patients. After the inclusion of CCR, no other covariates significantly improved model fit. Sex was associated with individual-specific V_p , and during the three rounds of forward inclusion, all three Δ OFV values were greater than 3.84; the V_p of males was approximately 1.4 times that of females, but in the backward elimination process, the influence of sex was not retained in the final model. The SOFA score was marginally associated with individual-specific CL and was excluded from the backward elimination process. Furthermore, no relationships were identified between the CL, V_c , or V_p of daptomycin and APACHE II score, age, or serum albumin concentration.

The final covariate model is as follows:

$$CL(L/h) = \begin{cases} 0.386 & \text{in subjects undergoing CRRT} \\ 0.229 + 0.148 \cdot \left(\frac{CCR}{54}\right) & \text{in others} \end{cases}$$

$$V_c(L) = 4.14$$

$$V_p(L) = 3.52$$

$$Q(L/h) = 2.09$$

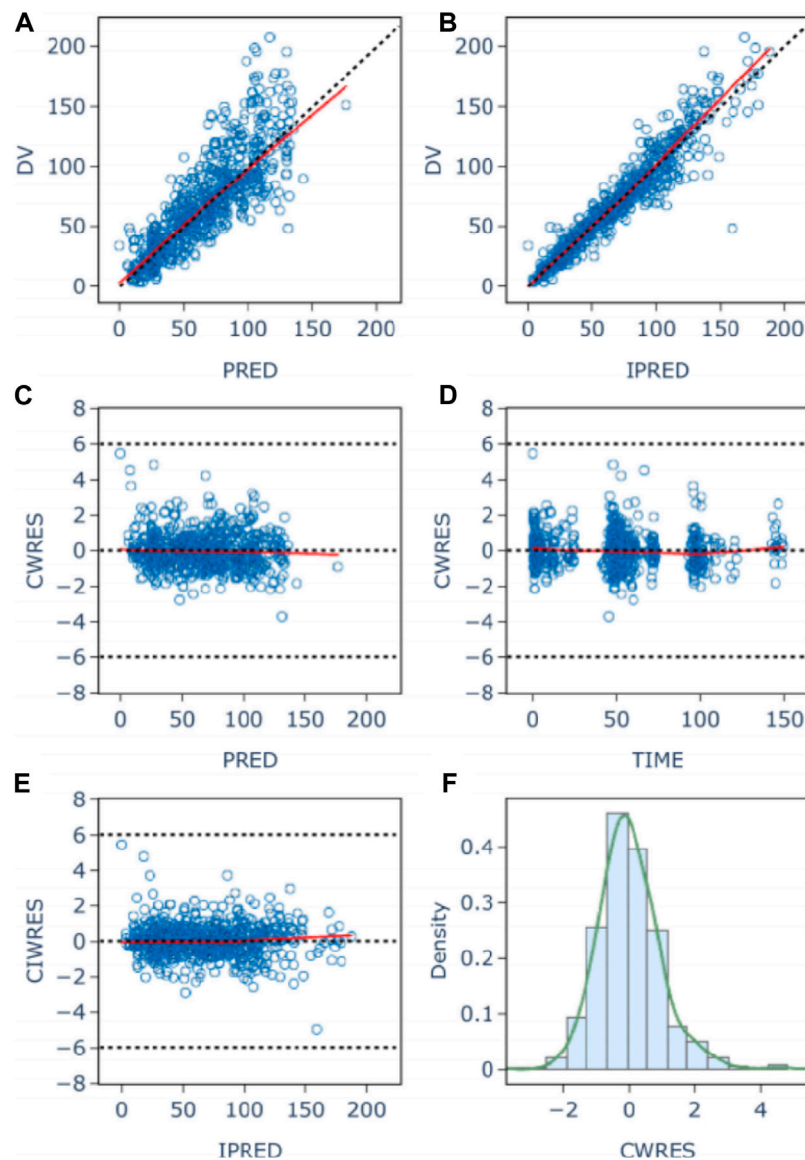


FIGURE 2

Population (A) and individual (B) fitted versus observed daptomycin concentrations; Diagnostic plot of Conditional weighted residuals (CWRES) versus population predicted value (C), time (D), and individual Predicted Values (E); histogram of conditional weighted residuals (F). The red lines display the trend of the data, the dotted black lines indicate the expected trends, the blue circles represent the observed data.

where CCR/54 is the corresponding median standardized individual CCR calculated for the current patient population.

Model validation and evaluation

The goodness-of-fit plots for model checking are presented in Figure 2; the results show that the trend deviation of the final model is unbiased, and the fit is satisfactory. Table 2 lists the parameters of the final population PK models together with the bootstrap results. All PK parameters were statistically significant as the 95% confidence intervals from the bootstrap analysis did not include 0. The VPC graph is shown in Figure 3, The quantile lines of the observed concentrations were all within the 90% confidence interval of the corresponding quantile lines of the predicted concentrations,

which indicates a good correlation between raw data and data obtained by simulation with the final model, so the model has good prediction ability.

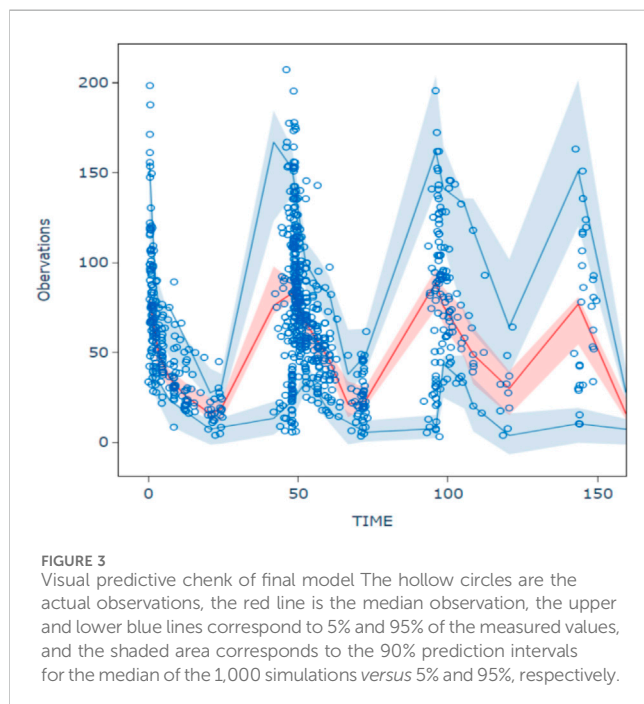
Monte Carlo simulation

Due to the lack of clear MIC values for some of the included patients undergoing preventive anti-infection treatment, we took MIC = 1 mg/L for subsequent calculations based on the clinical breakpoints identified by EUCAST for *Staphylococcus* spp. and *Streptococcus* spp. (Gregoire et al., 2021), and probability of reaching target (PTA) was defined as the probability of $AUC_{24h}/MIC \geq 666$. Simulations of the dosage regimens in patients with different renal functions are shown in Table 3, and the PTA is shown

TABLE 2 Final population pharmacokinetic models estimates and bootstrap results for daptomycin.

Parameter	Final Model			Bootstrap	
	Estimate	RSE%	Shrinkage%	Medians	95% Bootstrap CI
Theta					
NR (L/h)	0.229	25.1		0.231	0.125–0.36
V _C (L)	4.14	4.8		4.14	3.763–4.565
V _P (L)	3.52	8.2		3.527	2.987–4.078
Q (L/h)	2.09	8.2		2.086	1.736–2.482
CRRT (L/h)	0.386	5.1		0.386	0.351–0.428
R	0.152	31.3		0.15	0.062–0.264
Omega					
η[CL]	0.091	9.1	6.8	0.085	0.059–0.122
η[V _C]	0.114	9.6	11.4	0.11	0.074–0.157
η[V _P]	0.202	14.8	29.6	0.193	0.088–0.35
Sigma					
ε[PROP]	0.018	9.3	11.9	0.018	0.012–0.027
ε[ADD]	38.095	16.1	9.7	38.009	12.368–61.724
OFV	4574.582				
AIC	4596.582				
BIC	4647.211				

(Percentage of relative error, RSE %) = (standard error, SE)/(final value of parameter estimate, FPE) × 100, NR, no renal clearance; R, renal clearance; η, inter-individual variability; ε, residual variability.



in Figure 4. When the MIC value was 1 mg/L, the majority of critically ill adult patients were unable to achieve the anti-infective target when the daily dose of daptomycin was 400 mg (equivalent to

a dose of 6 mg/kg/day for a patient with a body weight of 70 kg); when the daily dose was 500 mg, the probability of achieving the pharmacodynamic target value reached 90% in adult patients receiving CRRT and with different degrees of renal impairment, and the infection could be better controlled; for critically ill adult patients with normal renal function (CCR \geq 90 mL/min), the daily dose needed to be increased to 700 mg (equivalent to the dose of 10 mg/kg/day for patients weighing 70 kg) in order to achieve 90% probability of reaching the pharmacodynamic target value. In patients receiving CRRT, the PTA was only 70.6% when administered at a dose of 400 mg for 24 h. It was necessary to increase the dosage to 500 mg to increase the PTA to 90.7%. Therefore, in patients with normal renal function, especially in critically ill patients with hyperrenalism, it is recommended to increase the dosage from the standard dosage recommended in the daptomycin insert and 500 mg q24 h is recommended for patients receiving CRRT.

Discussion

There were significant individual differences among the critically ill patients. Differences in age, weight, liver and kidney function, disease conditions, treatment methods, and physiological and biochemical indicators may lead to changes in the PK of daptomycin. Therefore, therapeutic drug monitoring (TDM) and

TABLE 3 Median AUC_{24h} and probability of attainment for each dosing regimen at different levels of renal function.

Parameters	Daily Dose (mg)	Value for subjects in CCR group						
		20 mL/min	30 mL/min	40 mL/min	60 mL/min	90 mL/min	120 mL/min	On CRRT
Median AUC _{24h} (µg·h/mL)	400	1145.9	884.2	981.1	817.5	745.4	659.7	884.2
	500	1432.3	1105.3	1226.4	1089.4	943.0	824.6	1105.3
	600	1718.8	1326.3	1471.6	1307.3	1131.6	989.5	1326.3
	700	2005.3	1547.4	1716.9	1525.2	1320.2	1154.4	1547.4
PTA (%)	400	91.2%	70.5%	69.8%	69.1%	58.7%	50.3%	70.6%
	500	95.4%	90.1%	92.6%	90.3%	73.6%	65.8%	90.7%
	600	96.4%	94.3%	93.9%	93.1%	90.0%	81.5%	94.4%
	700	99.5%	95.9%	95.8%	95.4%	93.7%	91.2%	95.5%

Abbreviations: AUC_{24h}, area under the plasma concentration-time curve over 24 h; CCR, creatinine clearance.

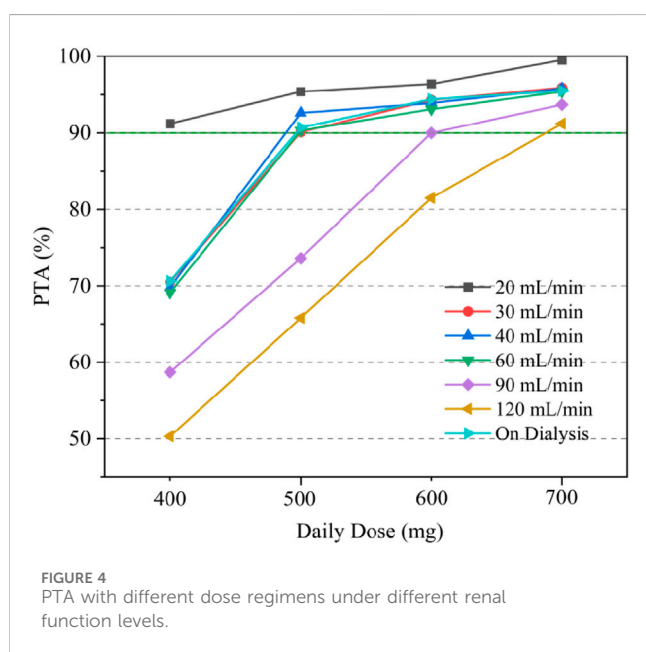


FIGURE 4 PTA with different dose regimens under different renal function levels.

precise drug delivery plans based on PPK models are important tools for optimizing the use of antibacterial drugs (Abdulla et al., 2021; Wicha et al., 2021; Oda et al., 2023).

To our knowledge, this is the largest population pharmacokinetic study of daptomycin in critically ill Han Chinese patients. In previous reports on the PPK of daptomycin, some were densely sampled, whereas others were sparsely sampled or directly modeled using blood drug concentration values from TDM. The final models are mostly one- or two-compartment models (Di Paolo et al., 2013; Soraluca et al., 2018; García-Martínez et al., 2022). Our study found that the population pharmacokinetic model of daptomycin in critically ill adult Chinese Han patients can be described by a two-compartment model, in which clearance in non-CRRT patients can be divided into renal and non-renal clearance components, and the renal clearance component is affected by creatinine clearance. By

examining the effects of covariates, such as age, weight, sex, and liver and kidney function, on the pharmacokinetics of daptomycin, we found that only CCR significantly affected the renal clearance of daptomycin, consistent with Soraluca's conclusion (Soraluca et al., 2018). The effect of CCR on daptomycin clearance has been extensively documented (Di Paolo et al., 2013; Chaves et al., 2014). Some previous studies found that body weight was associated with clearance. The differing results in this study may be due to the use of the Cockcroft-Gault equation to calculate the CCR in the present study, and that the effects of body weight, age, and sex were already included in the CCR; therefore, the effect of body weight on CL was not significant after inclusion of the CCR. The effect of body weight on daptomycin distribution volume was also not observed, and some PPK studies support this conclusion (Di Paolo et al., 2013; Falcone et al., 2013; Soraluca et al., 2018). In addition, we found that V₂ was slightly higher in males than in females. Other covariates did not significantly improve the model, and no effect of the combined use of extracorporeal membrane oxygenation on the pharmacokinetics in critically ill adult patients was observed. The final pharmacokinetic parameters are expressed as population values \pm standard error as follows: the non-renal clearance rate (CL_{NR}) of non-CRRT patients is (0.23 ± 0.05) L/h, and the renal clearance part (CL_R) is $(0.14 \pm 0.035) \times (CCR/54)$. The CL_{CRRT} value of patients receiving CRRT is (0.388 ± 0.050) L/h, which is similar to the results reported in previous PK studies of CRRT patients (Khadzhynov et al., 2011; Vilay et al., 2011). V₁ is (4.20 ± 0.19) L and V₂ is (3.67 ± 0.25) L were higher than in healthy volunteers (Gregoire et al., 2021) and similar to those reported in a previous study on PPK combining healthy participants and patients with different renal functions. The Q is (2.13 ± 0.17) L/h, which was slightly lower than in previous studies (Dvorchik et al., 2004; Soraluca et al., 2018; Xie et al., 2020). This result may be due to differences between the study population and a single sample source.

When optimizing the administration plan of daptomycin, we found that a higher dose is desirable to achieve a high treatment success rate (Safdar et al., 2004; Falcone et al., 2013; Ando et al., 2020) in patients with normal renal function, especially critically ill patients with hyperrenalism. For patients receiving CRRT, the

instructions recommend 6 mg/kg q48 h dosing. However, with q48 h dosing, the patient's exposure to the drug on the second day is lower, and there may be a risk of treatment failure on the second day, especially in patients with sepsis in the ICU (Kielstein et al., 2010; Chaves et al., 2014). Our results showed that for patients receiving CRRT, 500 mg q24 h administration met the pharmacodynamic target and did not exceed the safety threshold in most patients and that despite the presence of a small number of patients with $C_{min} > 24.3$ mg/L, no elevation of CPK associated with daptomycin was found (Ando et al., 2020). Several studies have indicated that $C_{min} > 24.3$ mg/L does not correlate well with skeletal muscle toxicity. Therefore, considering both efficacy and safety, we recommend q24 h dosing in patients receiving CRRT.

There are some limitations to this study, mainly that all patients were from a single center; therefore, it is hoped that a multicenter study can be conducted to include a larger sample and further optimize the model to better individualize medication.

Conclusion

Overall, this study provides a PPK model for daptomycin in critically ill Han Chinese patients. Our study showed that intravenous daptomycin doses are best scaled by creatinine clearance; a higher dose is recommended for critically ill patients with hyperrenalism, and 24 h medication is recommended for patients receiving CRRT.

Data availability statement

The original contributions presented in the study are included in the article/[Supplementary Material](#), further inquiries can be directed to the corresponding author.

Ethics statement

The studies involving humans were approved by the Ethics Committee of Zhongnan Hospital of Wuhan University (No. LYL2019018). The studies were conducted in accordance with the local legislation and institutional requirements. The

participants provided their written informed consent to participate in this study.

Author contributions

JW: Conceptualization, Methodology, Writing-original draft, Writing-review and editing. XZ: Formal Analysis, Software, Validation, Visualization, Writing-original draft, Writing-review and editing. LZ: Investigation, Analyzed patient information, Writing-original draft, Writing-review and editing. JW, YL and YX: Data curation, Writing-original draft, Writing-review and editing. DW: Project administration, Resources, Writing-original draft, Writing-review and editing.

Funding

The author(s) declare that no financial support was received for the research, authorship, and/or publication of this article.

Conflict of interest

The authors declare that the research was conducted in the absence of any commercial or financial relationships that could be construed as a potential conflict of interest.

Publisher's note

All claims expressed in this article are solely those of the authors and do not necessarily represent those of their affiliated organizations, or those of the publisher, the editors and the reviewers. Any product that may be evaluated in this article, or claim that may be made by its manufacturer, is not guaranteed or endorsed by the publisher.

Supplementary material

The Supplementary Material for this article can be found online at: <https://www.frontiersin.org/articles/10.3389/fphar.2024.1378872/full#supplementary-material>

References

- Abdulla, A., Edwina, E. E., Flint, R. B., Allegaert, K., Wildschut, E. D., Koch, B. C. P., et al. (2021). Model-informed precision dosing of antibiotics in pediatric patients: a narrative review. *Front. Pediatr.* 9, 624639. doi:10.3389/fped.2021.624639
- Amsterdam, D., Gorzynski, E. A., Beam, T. R., and Rotstein, C. (1994). Susceptibility of bacteraemic isolates of gram-positive cocci to daptomycin and other antimicrobial agents. *J. Antimicrob. Chemother.* 33, 1060–1064. doi:10.1093/jac/33.5.1060
- Ando, M., Nishioka, H., Nakasako, S., Kuramoto, E., Ikemura, M., Kamei, H., et al. (2020). Observational retrospective single-centre study in Japan to assess the clinical significance of serum daptomycin levels in creatinine phosphokinase elevation. *J. Clin. Pharm. Ther.* 45, 290–297. doi:10.1111/jcpt.13061
- Bauer, R. J., Guzy, S., and Ng, C. (2007). A survey of population analysis methods and software for complex pharmacokinetic and pharmacodynamic models with examples. *AAPS J.* 9, E60–E83. doi:10.1208/aapsj0901007
- Benvenuto, M., Benziger, D. P., Yankelev, S., and Vigliani, G. (2006). Pharmacokinetics and tolerability of daptomycin at doses up to 12 milligrams per kilogram of body weight once daily in healthy volunteers. *Antimicrob. Agents Chemother.* 50, 3245–3249. doi:10.1128/AAC.00247-06
- Bhavnani, S. M., Rubino, C. M., Ambrose, P. G., and Drusano, G. L. (2010). Daptomycin exposure and the probability of elevations in the creatine phosphokinase level: data from a randomized trial of patients with bacteremia and endocarditis. *Clin. Infect. Dis. official Publ. Infect. Dis. Soc. Am.* 50, 1568–1574. doi:10.1086/652767
- Blot, S. I., Pea, F., and Lipman, J. (2014). The effect of pathophysiology on pharmacokinetics in the critically ill patient—concepts appraised by the example of antimicrobial agents. *Adv. drug Deliv. Rev.* 77, 3–11. doi:10.1016/j.addr.2014.07.006
- Bush, L. M., Boscia, J. A., Wendeler, M., Pitsakis, P. G., and Kaye, D. (1989). *In vitro* postantibiotic effect of daptomycin (LY146032) against *Enterococcus faecalis* and

- methicillin-susceptible and methicillin-resistant *Staphylococcus aureus* strains. *Antimicrob. agents Chemother.* 33, 1198–1200. doi:10.1128/aac.33.8.1198
- Chaves, R. L., Chakraborty, A., Benziger, D., and Tannenbaum, S. (2014). Clinical and pharmacokinetic considerations for the use of daptomycin in patients with *Staphylococcus aureus* bacteraemia and severe renal impairment. *J. Antimicrob. Chemother.* 69, 200–210. doi:10.1093/jac/dkt342
- Dimopoulos, G., Koulenti, D., Blot, S., Sakr, Y., Anzueto, A., Spies, C., et al. (2013). Critically ill elderly adults with infection: analysis of the extended prevalence of infection in intensive care study. *J. Am. Geriatrics Soc.* 61, 2065–2071. doi:10.1111/jgs.12544
- Di Paolo, A., Tascini, C., Polillo, M., Gemignani, G., Nielsen, E. I., Bocci, G., et al. (2013). Population pharmacokinetics of daptomycin in patients affected by severe Gram-positive infections. *Int. J. Antimicrob. agents* 42, 250–255. doi:10.1016/j.ijantimicag.2013.06.006
- Dvorchik, B., Arbeit, R. D., Chung, J., Liu, S., Knebel, W., and Kastrissios, H. (2004). Population pharmacokinetics of daptomycin. *Antimicrob. agents Chemother.* 48, 2799–2807. doi:10.1128/AAC.48.8.2799-2807.2004
- Enoch, D. A., Bygott, J. M., Daly, M. L., and Karas, J. A. (2007). Daptomycin. *J. Infect.* 55, 205–213. doi:10.1016/j.jinf.2007.05.180
- Falcone, M., Russo, A., Venditti, M., Novelli, A., and Pai, M. P. (2013). Considerations for higher doses of daptomycin in critically ill patients with methicillin-resistant *Staphylococcus aureus* bacteremia. *Clin. Infect. Dis. official Publ. Infect. Dis. Soc. Am.* 57, 1568–1576. doi:10.1093/cid/cit582
- García-Martínez, T., Bellés-Medall, M. D., García-Cremades, M., Ferrando-Piqueres, R., Mangas-Sanjuán, V., and Merino-Sanjuán, M. (2022). Population pharmacokinetic/pharmacodynamic modelling of daptomycin for schedule optimization in patients with renal impairment. *Pharmaceutics* 14, 2226. doi:10.3390/pharmaceutics14102226
- Gould, I. M., Cauda, R., Esposito, S., Gudiol, F., Mazzei, T., and Garau, J. (2011). Management of serious methicillin-resistant *Staphylococcus aureus* infections: what are the limits? *Int. J. Antimicrob. agents* 37, 202–209. doi:10.1016/j.ijantimicag.2010.10.030
- Gregoire, N., Chauzy, A., Buyck, J., Rammaert, B., Couet, W., and Marchand, S. (2021). Clinical pharmacokinetics of daptomycin. *Clin. Pharmacokinet.* 60, 271–281. doi:10.1007/s40262-020-00968-x
- Hawkey, P. M. (2008). Pre-clinical experience with daptomycin. *J. Antimicrob. Chemother.* 62 (Suppl. 3), iii7–14. doi:10.1093/jac/dkn367
- Heidary, M., Khosravi, A. D., Khoshnood, S., Nasiri, M. J., Soleimani, S., and Goudarzi, M. (2018). Daptomycin. *J. Antimicrob. Chemother.* 73, 1–11. doi:10.1093/jac/dkx349
- Hobbs, J. K., Miller, K., O'Neill, A. J., and Chopra, I. (2008). Consequences of daptomycin-mediated membrane damage in *Staphylococcus aureus*. *J. Antimicrob. Chemother.* 62, 1003–1008. doi:10.1093/jac/dkn321
- Khadzhynov, D., Slowinski, T., Lieker, I., Spies, C., Puhlmann, B., König, T., et al. (2011). Plasma pharmacokinetics of daptomycin in critically ill patients with renal failure and undergoing CVVHD. *Int. J. Clin. Pharmacol. Ther.* 49, 656–665. doi:10.5414/cp201626
- Kielstein, J. T., Eugbers, C., Bode-Boeger, S. M., Martens-Lobenhoffer, J., Haller, H., Joukhadar, C., et al. (2010). Dosing of daptomycin in intensive care unit patients with acute kidney injury undergoing extended dialysis—a pharmacokinetic study. *Nephrol. Dialysis Transplant. official Publ. Eur. Dialysis Transpl. Assoc. - Eur. Ren. Assoc.* 25, 1537–1541. doi:10.1093/ndt/gfp704
- Louie, A., Kaw, P., Liu, W., Jumbe, N., Miller, M. H., and Drusano, G. L. (2001). Pharmacodynamics of daptomycin in a murine thigh model of *Staphylococcus aureus* infection. *Antimicrob. agents Chemother.* 45, 845–851. doi:10.1128/AAC.45.3.845-851.2001
- Metzger, R., Bonatti, H., and Sawyer, R. (2009). Future trends in the treatment of serious Gram-positive infections. *Drugs today* 45, 33–45. doi:10.1358/dot.2009.45.1.1315922
- Mohr, J. F., Friedrich, L. V., Yankelev, S., and Lamp, K. C. (2009). Daptomycin for the treatment of enterococcal bacteraemia: results from the cubicin outcomes registry and experience (CORE). *Int. J. Antimicrob. agents* 33, 543–548. doi:10.1016/j.ijantimicag.2008.12.007
- Moore, C. L., Osaki-Kiyan, P., Haque, N. Z., Perri, M. B., Donabedian, S., and Zervos, M. J. (2012). Daptomycin versus vancomycin for bloodstream infections due to methicillin-resistant *Staphylococcus aureus* with a high vancomycin minimum inhibitory concentration: a case-control study. *Clin. Infect. Dis. official Publ. Infect. Dis. Soc. Am.* 54, 51–58. doi:10.1093/cid/cir764
- Murray, K. P., Zhao, J. J., Davis, S. L., Kullar, R., Kaye, K. S., Lephart, P., et al. (2013). Early use of daptomycin versus vancomycin for methicillin-resistant *Staphylococcus aureus* bacteremia with vancomycin minimum inhibitory concentration >1 mg/L: a matched cohort study. *Clin. Infect. Dis. official Publ. Infect. Dis. Soc. Am.* 56, 1562–1569. doi:10.1093/cid/cit112
- Oda, K., Saito, H., and Jono, H. (2023). Bayesian prediction-based individualized dosing of anti-methicillin-resistant *Staphylococcus aureus* treatment: recent advancements and prospects in therapeutic drug monitoring. *Pharmacol. Ther.* 246, 108433. doi:10.1016/j.pharmthera.2023.108433
- Safdar, N., Andes, D., and Craig, W. A. (2004). *In vivo* pharmacodynamic activity of daptomycin. *Antimicrob. agents Chemother.* 48, 63–68. doi:10.1128/aac.48.1.63-68.2004
- Savic, R. M., Kjellsson, M. C., and Karlsson, M. O. (2009). Evaluation of the nonparametric estimation method in NONMEM VI. *Eur. J. Pharm. Sci. official J. Eur. Fed. Pharm. Sci.* 37, 27–35. doi:10.1016/j.ejps.2008.12.014
- Shekar, K., Roberts, J. A., McDonald, C. I., Ghassabian, S., Anstey, C., Wallis, S. C., et al. (2015). Protein-bound drugs are prone to sequestration in the extracorporeal membrane oxygenation circuit: results from an *ex vivo* study. *Crit. care London, Engl.* 19, 164. doi:10.1186/s13054-015-0891-z
- Silverman, J. A., Perlmutter, N. G., and Shapiro, H. M. (2003). Correlation of daptomycin bactericidal activity and membrane depolarization in *Staphylococcus aureus*. *Antimicrob. agents Chemother.* 47, 2538–2544. doi:10.1128/aac.47.8.2538-2544.2003
- Smith, B. S., Yogaratnam, D., Levasseur-Franklin, K. E., Forni, A., and Fong, J. (2012). Introduction to drug pharmacokinetics in the critically ill patient. *Chest* 141, 1327–1336. doi:10.1378/chest.11-1396
- Soraluce, A., Asín-Prieto, E., Rodríguez-Gascón, A., Barrasa, H., Maynar, J., Carcelero, E., et al. (2018). Population pharmacokinetics of daptomycin in critically ill patients. *Int. J. Antimicrob. agents* 52, 158–165. doi:10.1016/j.ijantimicag.2018.03.008
- Tally, F. P., and DeBruin, M. F. (2000). Development of daptomycin for gram-positive infections. *J. Antimicrob. Chemother.* 46, 523–526. doi:10.1093/jac/46.4.523
- Udy, A. A., Roberts, J. A., Boots, R. J., Paterson, D. L., and Lipman, J. (2010). Augmented renal clearance: implications for antibacterial dosing in the critically ill. *Clin. Pharmacokinet.* 49, 1–16. doi:10.2165/11318140-000000000-00000
- Vilay, A. M., Grió, M., Depestel, D. D., Sowinski, K. M., Gao, L., Heung, M., et al. (2011). Daptomycin pharmacokinetics in critically ill patients receiving continuous venovenous hemodialysis. *Crit. care Med.* 39, 19–25. doi:10.1097/CCM.0b013e3181fa36fb
- Wicha, S. G., Mårtson, A. G., Nielsen, E. I., Koch, B. C. P., Friberg, L. E., Alffenaar, J. W., et al. (2021). From therapeutic drug monitoring to model-informed precision dosing for antibiotics. *Clin. Pharmacol. Ther.* 109, 928–941. doi:10.1002/cpt.2202
- Xie, F., Li, S., and Cheng, Z. (2020). Population pharmacokinetics and dosing considerations of daptomycin in critically ill patients undergoing continuous renal replacement therapy. *J. Antimicrob. Chemother.* 75, 1559–1566. doi:10.1093/jac/dkaa028