



OPEN ACCESS

EDITED BY
Jean Paul Deslypere,
Aesculape CRO, Belgium

REVIEWED BY
Keyue Ding,
Queen's University, Canada
Sunita Nair,
Consultant, Mumbai, India

*CORRESPONDENCE
Qiao Liu,
liuqiao6767@csu.edu.cn

SPECIALTY SECTION
This article was submitted to Drugs
Outcomes Research and Policies,
a section of the journal
Frontiers in Pharmacology

RECEIVED 21 February 2022
ACCEPTED 25 July 2022
PUBLISHED 25 August 2022

CITATION
Zhou D, Luo X, Zhou Z, Zeng X, Wan X,
Tan C and Liu Q (2022), Cost-
effectiveness analysis of tislelizumab,
nivolumab and docetaxel as second-
and third-line for advanced or
metastatic non-small cell lung cancer
in China.
Front. Pharmacol. 13:880280.
doi: 10.3389/fphar.2022.880280

COPYRIGHT
© 2022 Zhou, Luo, Zhou, Zeng, Wan,
Tan and Liu. This is an open-access
article distributed under the terms of the
[Creative Commons Attribution License
\(CC BY\)](https://creativecommons.org/licenses/by/4.0/). The use, distribution or
reproduction in other forums is
permitted, provided the original
author(s) and the copyright owner(s) are
credited and that the original
publication in this journal is cited, in
accordance with accepted academic
practice. No use, distribution or
reproduction is permitted which does
not comply with these terms.

Cost-effectiveness analysis of tislelizumab, nivolumab and docetaxel as second- and third-line for advanced or metastatic non-small cell lung cancer in China

Dongchu Zhou¹, Xia Luo¹, Zhen Zhou², Xiaohui Zeng³,
Xiaomin Wan¹, Chongqing Tan¹ and Qiao Liu^{1*}

¹Department of Pharmacy, The Second Xiangya Hospital of Central South University, Changsha, China, ²Menzies Institute for Medical Research, University of Tasmania, Hobart, TAS, Australia, ³Department of Nuclear Medicine/PET Image Center, The Second Xiangya Hospital of Central South University, Changsha, China

Objective: Domestic PD-1inhibitor tislelizumab has emerged as a promising treatment for Chinese patients with driver-negative advanced or metastatic non-small cell lung cancer (NSCLC). The purpose of our study to evaluate whether tislelizumab is cost-effective as a second- or third-line treatment for this population compared with docetaxel (conventional chemotherapy) and nivolumab (imported PD-1inhibitor), from the perspective of the Chinese healthcare system.

Material and Methods: A Markov model with a 3-week Markov cycle and a 30-year time horizon was built to compare the cost-effectiveness of second- or third-line tislelizumab versus docetaxel and nivolumab. Transition probabilities, including disease progression, survival, and adverse events (AEs)-related treatment discontinuation event, were estimated from the clinical trials. Costs and health utilities were collected from local hospitals, public database and published literature.

Results: Compared with docetaxel, tislelizumab provided an additional 0.33 quality-adjusted life-years (QALYs) (1.37 vs. 1.04 QALYs) at an incremental cost of \$9,286 (\$23,646 vs. \$14,360) for Chinese patients with driver-negative advanced or metastatic NSCLC, resulting in an incremental cost-effectiveness ratio (ICER) of \$27,959/QALY under the WTP threshold of \$35,663/QALY used in the model. Compared with nivolumab, tislelizumab was associated with a lower cost (\$23,646 vs. \$59,447) and higher QALYs (1.37 vs. 1.20 QALYs), resulting in its dominance of nivolumab.

Conclusion: From the perspective of the Chinese healthcare system, domestic PD-1inhibitor tislelizumab immunotherapy represents a cost-effective treatment strategy compared with conventional docetaxel chemotherapy and imported PD-1inhibitor nivolumab immunotherapy in the treatment of driver-negative advanced or metastatic NSCLC beyond the first-line setting. In

the era of “Universal Medical Insurance System”, the rational use of domestic anticancer drugs guided by cost-benefit evidence would be an effective means to balance the limited expenditure of medical insurance fund and the growing demand for cancer treatments.

KEYWORDS

cost-effectiveness, NSCLC, tislelizumab, nivoluma, docetaxel, China

Introduction

In 2020, China reported 816,000 new lung cancer cases which ranked first in the world (Cao et al., 2021; Sung et al., 2021). Non-small cell lung cancer (NSCLC) accounted for about 85% of these cases (Tian et al., 2022). Up to 46% of NSCLC cases had an advanced or metastatic disease (Chen et al., 2014), and a substantial proportion of patients had no genetic aberrations, resulting in their ineligibility for promising targeted therapy (Grant et al., 2021). For driver-negative advanced or metastatic NSCLC patients (defined as advanced or metastatic NSCLC patients without known sensitizing EGFR mutations or ALK rearrangements), who progressed after prior platinum-based chemotherapy, anti-programmed cell death protein 1/programmed cell death ligand 1 (PD-1/L1) immunotherapy becomes the mainstay of the standard-of-care (Guidelines Working Committee of Chinese society of Clinical Oncology, 2021). As of now, the Chinese National Medical Products Administration (NMPA) approved 3 anti PD-1/L1 therapies (nivolumab, pembrolizumab, atezolizumab) for the management of driver-negative advanced or metastatic NSCLC, given their superior efficacy in prolonging survival over traditional chemotherapies (Herbst et al., 2016; Rittmeyer et al., 2017; Wu et al., 2019). However, the prohibitive costs of these imported drugs (about \$84,000 per year) substantially limit their widespread uses in China, where the per capita gross domestic product (GDP) is only \$10,000 (National Bureau Of Statistics Of China, 2021).

To improve patients’ accessibility to PD-1/L1 inhibitors, the Chinese government has been committed to the development of domestic PD-1/L1 inhibitors in recent years (Central People’s Government of the People’s Republic of China, 2021a). Tislelizumab is the first domestic anti-PD-1 antibody that shows good efficacy in the second- and third-line treatments for advanced or metastatic NSCLC (Zhou et al., 2021). The ongoing RATIONALE 303 is an open-label, randomized phase three trial of tislelizumab versus docetaxel in NSCLC subjects who have progressed after the prior platinum-containing treatment; (ClinicalTrials.gov Identifier: NCT03358875) (Zhou et al., 2021). The research team recently reported that tislelizumab significantly improved overall survival (OS) and progression-free survival (PFS) in the study population compared to docetaxel (Zhou et al., 2021). In addition, tislelizumab showed a good safety profile

of which most adverse events (AEs) were tolerable and manageable. Also, tislelizumab users reported fewer grade III/IV adverse events (AEs) than those treated with docetaxel (Zhou et al., 2021). According to this, the Chinese society of clinical oncology (CSCO) Guidelines recommend tislelizumab used as a second-line treatment option for patients with driver-negative advanced or metastatic NSCLC (Guidelines Working Committee of Chinese society of Clinical Oncology, 2021).

The efficacy of domestic PD-1inhibitors must be weighed against its economic consequences. Whether domestic PD-1inhibitor tislelizumab provides an additional clinical value at

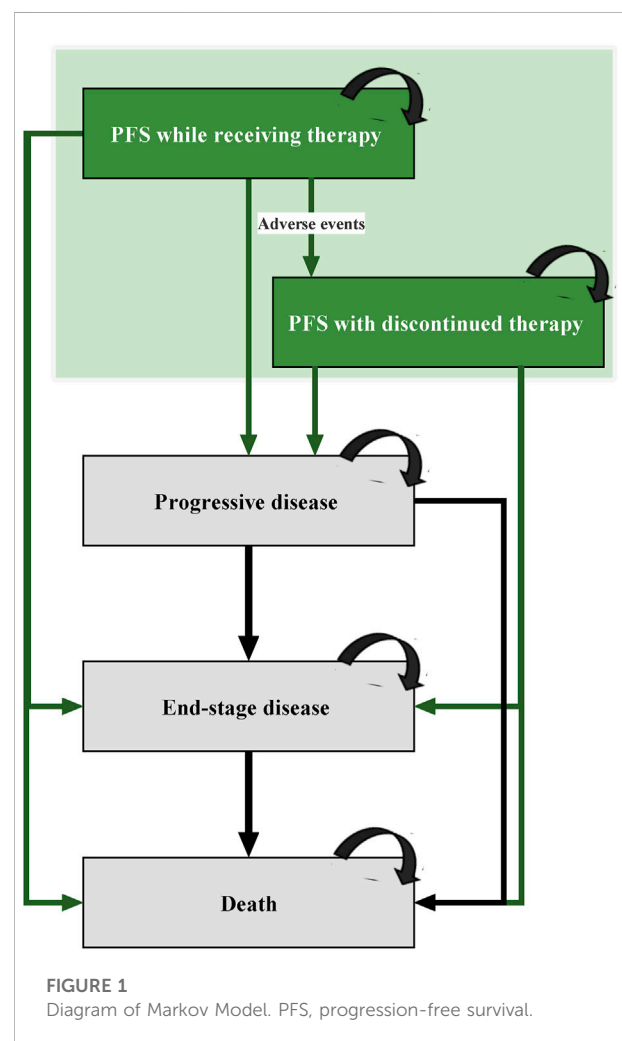


FIGURE 1
Diagram of Markov Model. PFS, progression-free survival.

a justifiable cost compared to commonly used clinical therapies, such as imported PD-1inhibitor nivolumab immunotherapy and conventional docetaxel chemotherapy, remains to be determined. Therefore, we conducted this study to assess the cost-effectiveness of tislelizumab versus docetaxel and nivolumab as a second- or third-line treatment for advanced or metastatic NSCLC from the perspective of the Chinese healthcare system.

Methods

Overview

We designed a cost-effectiveness model to compare the use of tislelizumab (domestic PD-1inhibitor), docetaxel (chemotherapy drug), and nivolumab (imported PD-1inhibitor) in the treatment of driver-negative advanced or metastatic NSCLC beyond the first-line setting from the perspective of Chinese health care system. TreeAge Pro Healthcare software (version 2021, <https://www.treeage.com/>) and R software (version 4.0.4, <http://www.r-project.org>) were used to construct and analyze this model. This economic evaluation used non-individual patient data and was therefore deemed exempt from the approval of Chinese ethics review committee. Our study followed the China Guidelines for Pharmacoeconomic Evaluation (2020) (Chinese Pharmaceutical Association, 2020).

Model construction

This analysis based on a Markov model was characterized by four main health states: progression-free survival (PFS), progressive disease (PD), end-stage disease, and death (Figure 1). Model patients mirrored the subjects recruited in the RATIONALE 303 clinical trial, who had driver-negative advanced or metastatic NSCLC and progressed after previous platinum-based chemotherapy. All patients began in PFS health state and were treated with second- or third-line tislelizumab, docetaxel, and nivolumab. Considering that patients may discontinue these treatments due to intolerable toxicity before experiencing disease progression (Lu et al., 2021a; Zhou et al., 2021), two sub PFS health states (PFS health state while receiving therapy and PFS health state with discontinued therapy) were constructed to reflect the real-world practice. Patients with disease progression during tislelizumab, docetaxel, or nivolumab treatments would transfer to the PD health state, in which certain patients were proceeded to third- or further-line treatment with anlotinib (Han et al., 2018; Guidelines Working Committee of Chinese society of Clinical Oncology, 2021). After progressed on anlotinib treatment, patients ultimately entered to the end-stage disease health state and were provided with palliative care before death (Guidelines Working Committee of Chinese

society of Clinical Oncology, 2021). In addition, according to the CSCO Guidelines for NSCLC, the best supportive care (BSC) should be supplemented in patients receiving cancer treatments (Guidelines Working Committee of Chinese society of Clinical Oncology, 2021). Supplementary Table S1 provides the dosage and administration information for each treatment regimen used in the model.

Markov cohort analysis with a 3-week Markov cycle and a 30-year time horizon was performed to compute the incremental cost-effectiveness ratio (ICER) between competing treatment options, which reflected the incremental healthcare cost consumed for each additional effectiveness [measured by quality-adjusted life-year (QALY)]. The cost-effectiveness of one regimen relative to another was determined by comparing these ICERs with the willingness-to-pay (WTP) threshold of \$35,663 per QALY (defined as three times of China's per capita GDP in 2021) (Chinese Pharmaceutical Association, 2020; National Bureau Of Statistics Of China, 2021). This study reported costs in 2021 USD (1 USD was equivalent to 6.4512 CNY) and discounted both costs and effectiveness at an annual rate of 5% (Chinese Pharmaceutical Association, 2020).

Transition probabilities

Transition probabilities between Markov health states were estimated using the method described in our previous studies (Liu et al., 2021a; Liu et al., 2021b). Firstly, using the GetData Graph Digitizer software (version 2.26; <http://www.getdata-graphdigitizer.com/index.php>), we digitized the survival data for the second- or third-line tislelizumab/docetaxel and third- or further-line anlotinib from the Kaplan-Meier (KM) curves reported in their representative clinical trials (Han et al., 2018; Zhou et al., 2021). Secondly, according to goodness-of-fit test using Akaike information criterion (AIC) and Bayesian information criterion (BIC), we chose the log-logistic distribution that provided the best fit to these recreated individual patient-level data for survival fitting (Supplementary Figure S1 and Supplementary Table S2). Thirdly, the log-logistic survival curves for second- or third-line nivolumab were derived by using the HRs of nivolumab relative to tislelizumab, which were generated by a network meta-analysis implemented in R software due to the lack of head-to-head clinical trials for a direct comparison. Fourthly, the log-logistic theta (θ) and kappa (κ) parameters were used to calculate transition probabilities between four main Markov health states (16.17). Finally, the transition probability between the two PFS substates was calculated using data of AEs-related treatment discontinuation observed in clinical trials (Han et al., 2018; Zhou et al., 2021) (Supplementary Table S3). All model inputs for transition probabilities estimation are summarized in Table 1.

TABLE 1 Model inputs.

| Variable | Baseline value | Range | Distribution | Source |
|---|---|-------------------|--------------|------------------------|
| Survival | | | | |
| OS for second- or third-line tislelizumab | Log-logistic: $\theta = 0.00927$; $\kappa = 1.46070$ | Fixed in DSA | Fixed in PSA | Estimated ^a |
| PFS for second- or third-line tislelizumab | Log-logistic: $\theta = 0.09158$; $\kappa = 1.28272$ | Fixed in DSA | Fixed in PSA | Estimated ^a |
| OS for second- or third-line docetaxel | Log-logistic: $\theta = 0.01092$; $\kappa = 1.61683$ | Fixed in DSA | Fixed in PSA | Estimated ^a |
| PFS for second- or third-line docetaxel | Log-logistic: $\theta = 0.05747$; $\kappa = 1.96409$ | Fixed in DSA | Fixed in PSA | Estimated ^a |
| OS for third- or fourth-line anlotinib | Log-logistic: $\theta = 0.01184$; $\kappa = 1.69854$ | Fixed in DSA | Fixed in PSA | Estimated ^a |
| PFS for third- or fourth-line anlotinib | Log-logistic: $\theta = 0.01411$; $\kappa = 2.18608$ | Fixed in DSA | Fixed in PSA | Estimated ^a |
| HR _{OS} of second- or third-line nivolumab vs. tislelizumab | 1.170 | 0.509–2.683 | Normal | Estimated ^b |
| HR _{OS} of second- or third-line nivolumab vs. tislelizumab (male subgroups) | 1.342 | 0.469–2.839 | Normal | Estimated ^a |
| HR _{OS} of second- or third-line nivolumab vs. tislelizumab (female subgroups) | 0.740 | 0.370–1.484 | Normal | Estimated ^a |
| HR _{PFS} of second- or third-line nivolumab vs. tislelizumab | 1.235 | 0.540–2.844 | Normal | Estimated ^b |
| 1-Cycle probability of tislelizumab treatment discontinuation due to AEs | 0.004499 | 0.002249–0.006748 | Beta | Estimated ^c |
| 1-Cycle probability of docetaxel treatment discontinuation due to AEs | 0.007759 | 0.003880–0.011639 | Beta | Estimated ^c |
| 1-Cycle probability of nivolumab treatment discontinuation due to AEs | 0.003408 | 0.001704–0.005112 | Beta | Estimated ^c |
| Costs (US\$) | | | | |
| Tislelizumab per 200 mg | 675.84 | 337.92–1013.76 | Gamma | Local charge |
| Docetaxel per 75 mg | 39.53 | 19.76–59.29 | Gamma | Local charge |
| Nivolumab per 3 mg | 43.02 | 21.51–64.52 | Gamma | Local charge |
| Anlotinib per 168 mg | 665.92 | 332.96–998.88 | Gamma | Local charge |
| Routine follow-up per cycle | 55.60 | 27.80–83.40 | Gamma | Liu Q et al. |
| BSC per cycle | 337.50 | 168.75–506.25 | Gamma | Liu Q et al. |
| Palliative care per cycle | 2627.80 | 1313.90–3941.70 | Gamma | Liu Q et al. |
| AEs cost for second- or third-line tislelizumab | 89.36 | 44.68–134.04 | Gamma | Estimated ^d |
| AEs cost for second- or third-line docetaxel | 1212.99 | 606.50–1819.49 | Gamma | Estimated ^d |
| AEs cost for second- or third-line nivolumab | 13.39 | 6.70–20.09 | Gamma | Estimated ^d |
| Utilities | | | | |
| PFS health state | 0.856 | 0.718–0.994 | Beta | Shen Y et al. |
| PD health state | 0.768 | 0.595–0.941 | Beta | Shen Y et al. |
| End-stage disease health state | 0.703 | 0.545–0.861 | Beta | Shen Y et al. |
| AEs disutility for second- or third-line tislelizumab | 0.002 | 0.001–0.003 | Beta | Estimated ^d |
| AEs disutility for second- or third-line docetaxel | 0.061 | 0.030–0.091 | Beta | Estimated ^d |
| AEs disutility for second- or third-line nivolumab | 0.002 | 0.001–0.003 | Beta | Estimated ^d |
| Other | | | | |
| Discount rate (%) | 5 | 0–8 | Fixed in PSA | Guidelines |
| Patient weight (kg) | 65 | 32.5–97.5 | Normal | Lu S et al. |
| Body surface area (m ²) | 1.72 | 0.86–2.58 | Normal | Lu S et al. |
| Proportion of subsequent anticancer therapy in tislelizumab group | 49.7% | 24.9–74.6% | Beta | RATIONALE 303 trial |
| Proportion of subsequent anticancer therapy in docetaxel group | 62.6% | 31.3–93.9% | Beta | RATIONALE 303 trial |
| Proportion of subsequent anticancer therapy in nivolumab group | 45.0% | 22.5–67.5% | Beta | CheckMate 078 trial |

^aEstimated by the survival fitting implemented in R software.

^bEstimated by the network meta-analysis implemented in R software.

^cEstimated in Supplemental Table S3.

^dEstimated in Supplemental Table S4.

DSA, deterministic sensitivity analysis; PSA, probabilistic sensitivity analyses; OS, overall survival; PFS, progression-free survival; HR, hazard ratio; BSC, best supportive care; AEs: adverse events; PD, progressive disease.

Costs and utilities estimates

We collected data of costs from the perspective of the Chinese healthcare system and incorporated the costs of second- and further-line drugs, AE management and general cancer management (including routine follow-up, BSC and palliative care) into the model. Drug costs were calculated based on the bid-winning drug price from the China's health industry data platform (<https://www.yaozh.com/>) (China's health industry data platform, 2021). We modeled the model patients as having a body weight of 65 kg and a body surface area of 1.72 m² (Lu et al., 2017), and then rounded each administration dosage to an integral multiple of the single-size vial to account for drug wastage (Sarfaty et al., 2021). Costs of AE management for each second- and third-line treatment were included as a frequency-weighted aggregate by multiplying the frequency of AEs reported in the clinical trials by the corresponding AEs management cost estimated using data derived from local hospitals (Lu et al., 2021a; Zhou et al., 2021). The model considered all observed grade III/IV AEs and were detailed in [Supplementary Table S4](#). The costs of routine follow-up, subsequent anticancer therapy, BSC and palliative care were derived from previous literature (Liu et al., 2021b).

QALYs were computed as a discounted sum of Chinese-specific health state utilities for advanced NSCLC within the model runtime (Shen et al., 2018). Utility decrement caused by common grade III/IV AEs during second- and third-line treatment was also considered in the model (Nafees et al., 2017). The statistical method used for the utility decrement is similar to the method used for AE costs ([Supplementary Table S4](#)).

Statistical analysis

Deterministic sensitivity analysis (DSA) and probabilistic sensitivity analyses (PSA) were carried out to test the robustness of our cost-effectiveness model. Multiple DSAs were performed on individual parameters that varied within the ranges listed in [Table 1](#) to determine their impact on the results. The variable range of parameters was set to their 95% CIs (such as utilities and HRs), plus or minus 50% of the baseline values (such as costs) or 0–8% recommended by the guidelines (such as discount) (Chinese Pharmaceutical Association, 2020). PSA was performed on multiple parameters randomly sampled from the distribution listed in [Table 1](#) to assess the uncertainty in

model inputs on affecting the model outputs. During DSA, 1,000 Monte Carlo simulations were used to generate 1,000 ICER estimates for tislelizumab versus docetaxel or nivolumab.

In addition, considering the disparity in OS benefits of tislelizumab between the male and female subgroups, we performed subgroups analysis using the sex-special HR of OS reported in the corresponding clinical trials (Chinese Pharmaceutical Association, 2020; Lu et al., 2021a; Zhou et al., 2021).

Results

Base-case analysis

Compared with docetaxel, tislelizumab provided an additional 0.33 QALYs (1.37 vs. 1.04 QALYs) at an incremental cost of \$9,286 (\$23,646 vs. \$14,360) for Chinese patients with driver-negative advanced or metastatic NSCLC, resulting in an ICER of \$27,959/QALY under the WTP threshold of \$35,663/QALY used in the model ([Table 2](#)). Compared with nivolumab, tislelizumab was associated with a lower cost (\$23,646 vs. \$59,447) and higher QALYs (1.37 vs. 1.20 QALYs), resulting in its dominance of nivolumab ([Table 2](#)).

Sensitivity analysis

The DSA results of tislelizumab vs. docetaxel showed that tislelizumab cost per 200 mg was the only parameter that can shift the cost-effective strategy from tislelizumab to docetaxel when assuming a WTP threshold of \$35,663/QALY. The variations in other parameters did not substantially alter our main results. The DSA results of tislelizumab versus nivolumab suggested that the HRs were the most influential parameter affecting our model. Variations in other parameters within reasonable ranges resulted in negative ICERs, which suggested that nivolumab was a cost-ineffective strategy compared with tislelizumab. The top 10 parameters relevant to ICERs are shown in [Figure 2](#).

The PSA on the probability of tislelizumab to be cost-effective compared with the docetaxel and nivolumab revealed that, at a WTP threshold of \$35,663/QALY, tislelizumab versus docetaxel was cost-effective in 42.1% of the 1,000 iterations and dominant in 12.0% ([Supplementary Figure S1](#)); tislelizumab versus nivolumab was cost-effective in 95.6% of the 1,000 iterations and dominant in 87.3%.

TABLE 2 Summary of simulation results.

| Base-case/act analysis | Cost, \$ | QALYs | Cost, \$ | Incremental | |
|-----------------------------|----------|-------|----------|-------------|------------------------------|
| | | | | QALYs | ICER,\$/QALY |
| Docetaxel | 14,360 | 1.04 | | | |
| Tislelizumab | 23,646 | 1.37 | 9,286 | 0.33 | 27,959 (cost-effective) |
| Nivolumab | 59,447 | 1.20 | 35,801 | -0.18 | Dominated |
| Subgroups analysis (male) | | | | | |
| Docetaxel | 14,326 | 1.04 | | | |
| Tislelizumab | 25,131 | 1.48 | 10,805 | 0.44 | 24,448 (cost-effective) |
| Nivolumab | 59,901 | 1.23 | 34,770 | -0.26 | Dominated |
| Subgroups analysis (female) | | | | | |
| Docetaxel | 14,326 | 1.04 | | | |
| Tislelizumab | 20,211 | 1.12 | 5,885 | 0.07 | 80,683 (not cost-effective) |
| Nivolumab | 59,660 | 1.21 | 39,449 | 0.09 | 428,246 (not cost-effective) |

QALY, quality-adjusted life-years; ICER, incremental cost-effectiveness ratios.

Subgroup analysis

In the male subgroups, tislelizumab remained cost-effective than docetaxel with an ICER (\$24,448/QALY) below the WTP threshold used in the model, and dominated nivolumab (Table 2). However, in the female subgroups, tislelizumab was not cost-effectiveness than docetaxel with an ICER (\$80,683/QALY) far above the WTP threshold used in the model, but it is still preferable to nivolumab.

Discussion

Domestic PD-1inhibitor has emerged as a promising treatment for stand-of-care in the management of driver-negative advanced or metastatic NSCLC in China (Guidelines Working Committee of Chinese society of Clinical Oncology, 2021). Although increasing clinical trials have confirmed the great clinical efficacy and favorable safety of domestic PD-1inhibitors (Wang et al., 2020; Lu et al., 2021b; Zhou et al., 2021), there are still limited pharmaco-economic evidence on the cost-effectiveness of domestic PD-1inhibitors. This study uniquely demonstrates the cost-effectiveness advantage of domestic PD-1inhibitor tislelizumab immunotherapy compared with conventional docetaxel chemotherapy and imported PD-1inhibitor nivolumab immunotherapy in the treatment of driver-negative advanced or metastatic NSCLC beyond the first-line setting from the perspective of Chinese health care system.

Our current results, combined with the findings from our previous cost-effectiveness studies (Liu et al., 2021a; Liu et al., 2021b), have important implications on the appropriateness of treatment widespread use by considering the impact of costs anticancer drugs on treatment decision-making in routine clinical

practice. At the patient level, costly anticancer drug may increase patients' risks of substantial debt or bankruptcy, thus making the anticancer drugs less affordable (Shi et al., 2016). At the socioeconomic level, China has more than one-third newly diagnosed lung cancer cases worldwide (Cao et al., 2021; Sung et al., 2021). The huge patient population makes the use of expensive anticancer drugs imposing a great economic burden on Chinese healthcare system (Xu et al., 2022). To reduce the financial burden brought by the use of anticancer drugs, the Chinese government has implemented a series of "combination boxing of health-care reform" in recent years, including supporting domestic research and development of anticancer drugs (Li et al., 2021), negotiating with suppliers to reduce the anticancer drugs price (Tang et al., 2020), and adding anticancer drugs into the National Reimbursement Drug list (NRDL) to realize government-patient copayment (Central People's Government of the People's Republic of China, 2021b). Tislelizumab evaluated in this study is a domestic PD-1inhibitor, which is likely to attain support from Chinese medical reform policies in the future. Against this background, we can expect that the cost-effectiveness of tislelizumab in Chinese NSCLC patients will be further improved.

Whether domestic anticancer drugs can provide similar or greater therapeutic efficacy than the imported anticancer drugs remains unanswered. In the absence of head-to-head clinical trials, we conducted an indirect cost-effectiveness comparison through network meta-analysis for domestic PD-1inhibitor tislelizumab immunotherapy and imported PD-1inhibitor nivolumab immunotherapy in the second- or third-line treatment of Chinese patients with driver-negative advanced or metastatic NSCLC. Results from this economic evaluation showed that compared with nivolumab, treatment with tislelizumab enables

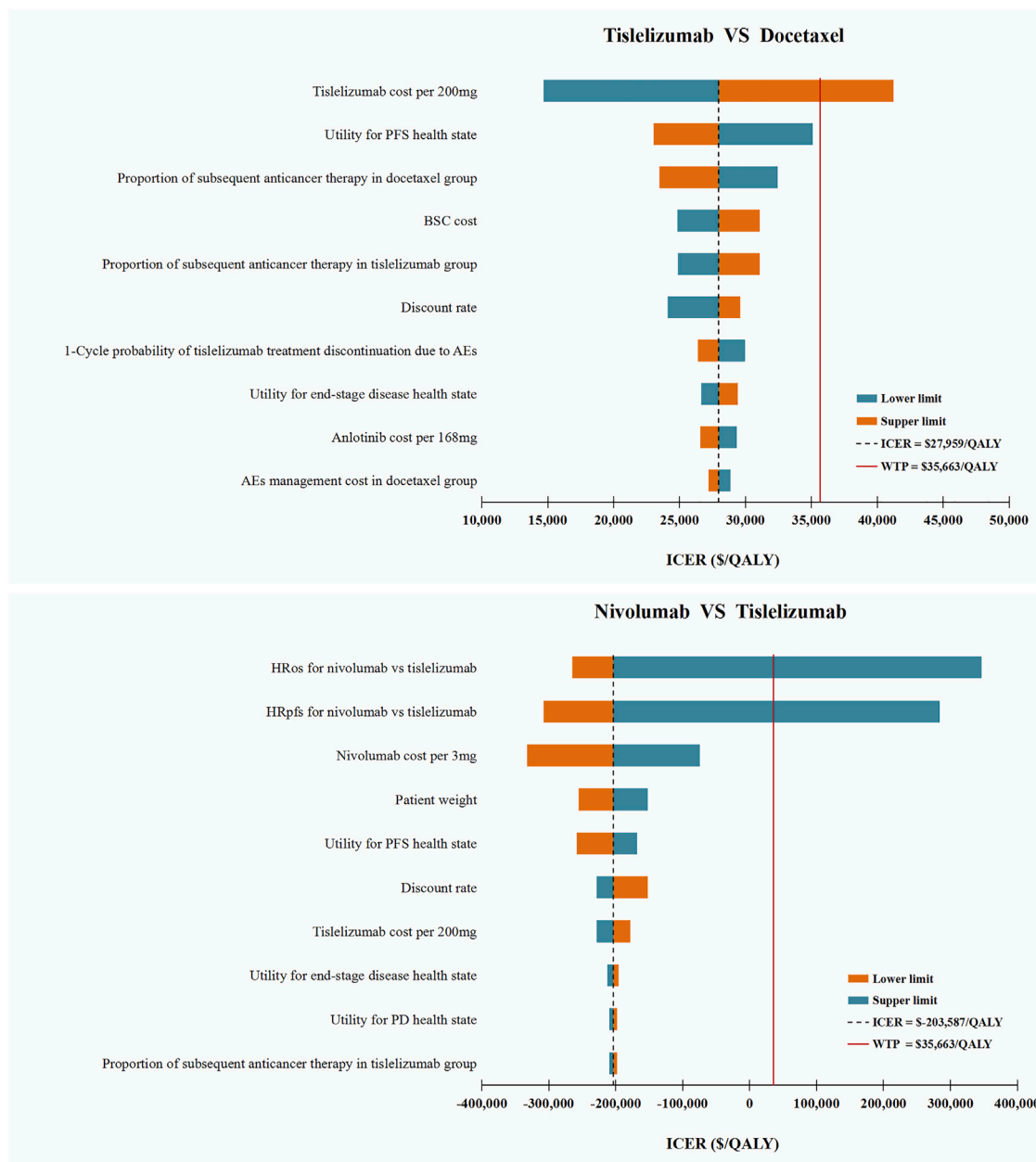


FIGURE 2 Deterministic Sensitivity Analysis. ICER, incremental cost-effectiveness ratios; QALY, quality-adjusted life-years; OS, overall survival; PFS, progression-free survival; HR, hazard ratio; PD, progressive disease; BSC, best supportive care; AEs: adverse events.

Chinese NSCLC patients to achieve a prolonged survival at a lower total cost. This finding added evidence for the use of tislelizumab among Chinese patients with driver-negative advanced or metastatic NSCLC beyond first-line setting. However, sensitivity analyses regarding the uncertainty in model parameters found that HRs of nivolumab relative to tislelizumab have the potential to change our findings. Therefore, when more mature clinical data are available making a direct comparison possible, our results warrant a further validation.

The emergence of domestic anticancer drugs not only caters to the growing demand for cancer treatment in China, but also panders to the challenges in the era of “Universal Medical Insurance System”. To alleviate the catastrophic medical expenditure (commonly known as “kan-bing-nan”, “kan-bing-gui” in Chinese), China launched a major health-care reform in 2019 and pledged to establish a basic medical insurance system covering all citizens by 2020 (Yip et al., 2019). As a result, the Chinese government has to invest massive funding into the health-care sector: from 2009 to

2020, government health expenditure on health care has quintupled from \$52.6 billion to \$331.7 billion (31). At present, how to effectively save and reasonably use the medical insurance fund has become the key to maintaining the sustainable development of Chinese Universal Medical Insurance System. As it is well-known that the market price of domestic anticancer drugs is generally much lower than that of imported products (Li et al., 2021), their widespread use in cancer treatment can greatly reduce the financial pressure of medical insurance fund.

To our knowledge, this is the first cost-effectiveness study to evaluate domestic PD-1inhibitor in the second- or third-line treatment for driver-negative advanced or metastatic NSCLC in Chinese patients. In addition, this study is also the first to compared domestic PD-1inhibitor with imported PD-1inhibitor in this setting. Our findings contributed to the existing evidence base that supports the use of domestic anticancer drugs as cost-effective treatments for cancers and have important implications for Chinese government to balance the limited expenditure of medical insurance fund and the growing demand for cancer treatment.

This study has several limitations. First, the study evaluated the cost-effectiveness of a novel domestic PD-1inhibitor tislelizumab in second- or third-line treatment of Chinese patients with driver-negative advanced or metastatic NSCLC, which was only recently reported in the RATIONALE 303 clinical trial and is still being assessed in an ongoing trial. Second, we used health state utilities reported in previous literature to inform model because quality-of-life data have not been published along with the main results of the RATIONALE 303 clinical trial to date, although literature-based utilities were specific to Chinese NSCLC patients (Shen et al., 2018). Third, the proportion of patients receiving subsequent anticancer therapy after progressing on tislelizumab, nivolumab and docetaxel treatment were derived from clinical trials (Lu et al., 2021a; Zhou et al., 2021), which may not fully reflect the real-world clinical practice. However, we varied these parameters by 50% around the baseline values in sensitivity analyses and found our results were robust. Fourth, there is an uncertainty in the post-trial outcomes for patients, although the long-term survival was inferred from KM curves using validated extrapolation techniques. Sixth, due to the lack of head-to-head clinical trials comparing these 3 drugs (tislelizumab, nivolumab and docetaxel), the HRs generated from a NMA was employed to enable this indirect cost-effectiveness comparison. However, as the treatment effect may differ between males and females and the ratios of males to females are different across trials, the indirect comparison may introduce some biases.

In conclusion, domestic PD-1inhibitor tislelizumab immunotherapy represents a cost-effective treatment strategy compared with conventional docetaxel chemotherapy and imported PD-1inhibitor nivolumab immunotherapy in the treatment of driver-negative advanced or metastatic NSCLC beyond the first-line setting from the perspective of Chinese health care system. In the era of “Universal Medical Insurance System”, the rational use of domestic anticancer drugs guided by

cost-benefit evidence would be an effective means to balance the limited expenditure of medical insurance fund and the growing demand for cancer treatments.

Data availability statement

The original contributions presented in the study are included in the article/Supplementary Material, further inquiries can be directed to the corresponding author.

Author contributions

QL contributed to the conception, design of the primarily model and interpreted the results. QL, XL, and DZ developed the economic model, performed the analyses and drafted the manuscript. ZZ and XZ collected and reviewed data. DZ, CT and XW provided clinical input, validated the model assumptions. All authors read and approved the final manuscript.

Funding

This work was supported by the Hunan Provincial Natural Science Foundation (grant numbers 2021JJ40817); Hunan Provincial Natural Science Foundation (grant numbers 2021JJ80080).

Conflict of interest

The authors declare that the research was conducted in the absence of any commercial or financial relationships that could be construed as a potential conflict of interest.

Publisher's note

All claims expressed in this article are solely those of the authors and do not necessarily represent those of their affiliated organizations, or those of the publisher, the editors and the reviewers. Any product that may be evaluated in this article, or claim that may be made by its manufacturer, is not guaranteed or endorsed by the publisher.

Supplementary material

The Supplementary Material for this article can be found online at: <https://www.frontiersin.org/articles/10.3389/fphar.2022.880280/full#supplementary-material>

References

- Cao, W., Chen, H. D., Yu, Y. W., Li, N., and Chen, W. Q. (2021). Changing profiles of cancer burden worldwide and in China: a secondary analysis of the global cancer statistics 2020. *Chin. Med. J.* 134 (7), 783–791. doi:10.1097/CM9.0000000000001474
- Central People's Government of the People's Republic of China (2021). China has strengthened the research and development of anti-cancer drugs and promoted the supply guarantee of patented drugs. Available at: http://www.gov.cn/xinwen/2018-08/06/content_5311957.htm (Accessed January 11, 2021).
- Central People's Government of the People's Republic of China (2021). Notice on printing and distributing the catalogue of drugs for national basic medical insurance, industrial injury insurance and maternity insurance. Available at: http://www.gov.cn/zhengce/zhengceku/2021-12/03/content_5655651.htm (Accessed December 11, 2021).
- Chen, V. W., Ruiz, B. A., Hsieh, M. C., Wu, X. C., Ries, L. A., and Lewis, D. R. (2014). Analysis of stage and clinical/prognostic factors for lung cancer from SEER registries: AJCC staging and collaborative stage data collection system. *Cancer* 120, 3781–3792. doi:10.1002/cncr.29045
- China's health industry data platform (2021). "China's health industry data platform," in *Bid winning information of drugs*. Available at: <https://www.yaozh.com/> (Accessed July 12, 2021).
- Chinese Pharmaceutical Association (2020). *China guidelines for pharmacoeconomic evaluations*. Available at: <https://www.cpa.org.cn/cpadmn/attached/file/20201203/1606977380634185.pdf> (Accessed April 22, 2021).
- Grant, M. J., Herbst, R. S., and Goldberg, S. B. (2021). Selecting the optimal immunotherapy regimen in driver-negative metastatic NSCLC. *Nat. Rev. Clin. Oncol.* 18 (10), 625–644. doi:10.1038/s41571-021-00520-1
- Guidelines Working Committee of Chinese society of Clinical Oncology (2021). *Guidelines of Chinese society of clinical oncology (CSCO) for non-small cell lung cancer [M]*. 2021 edition. Beijing: People's Medical Publishing House, 201.
- Han, B., Li, K., Wang, Q., Zhang, L., Shi, J., Wang, Z., et al. (2018). Effect of anlotinib as a third-line or further treatment on overall survival of patients with advanced non-small cell lung cancer: The ALTER 0303 phase 3 randomized clinical trial. *JAMA Oncol.* 4 (11), 1569–1575. doi:10.1001/jamaoncol.2018.3039
- Herbst, R. S., Baas, P., Kim, D. W., Felip, E., Pérez-Gracia, J. L., Han, J. Y., et al. (2016). Pembrolizumab versus docetaxel for previously treated, PD-L1-positive, advanced non-small-cell lung cancer (KEYNOTE-010): a randomised controlled trial. *Lancet* 387 (10027), 1540–1550. doi:10.1016/S0140-6736(15)01281-7
- Li, G., Qin, Y., Xie, C., Wu, Y. L., and Chen, X. (2021). Trends in oncology drug innovation in China. *Nat. Rev. Drug Discov.* 20 (1), 15–16. doi:10.1038/d41573-020-00195-w
- Liu, Q., Zhou, Z., Luo, X., Yi, L., Peng, L., Wan, X., et al. (2021). First-line ICI monotherapies for advanced non-small-cell lung cancer patients with PD-L1 of at least 50%: A cost-effectiveness analysis. *Front. Pharmacol.* 12, 788569. doi:10.3389/fphar.2021.788569
- Liu, Q., Zhou, Z., Zeng, X., and Tan, C. (2021). Cost-effectiveness of domestic PD-1 inhibitor camrelizumab combined with chemotherapy in the first-line treatment of advanced nonsquamous non-small-cell lung cancer in China. *Front. Pharmacol.* 12, 728440. doi:10.3389/fphar.2021.728440
- Lu, S., Wang, J., Cheng, Y., Mok, T., Chang, J., Zhang, L., et al. (2021). Nivolumab versus docetaxel in a predominantly Chinese patient population with previously treated advanced non-small cell lung cancer: 2-year follow-up from a randomized, open-label, phase 3 study (CheckMate 078). *Lung Cancer* 152, 7–14. doi:10.1016/j.lungcan.2020.11.013
- Lu, S., Wang, J., Yu, Y., Yu, X., Hu, Y., Ai, X., et al. (2021). Tislelizumab plus chemotherapy as first-line treatment for locally advanced or metastatic nonsquamous NSCLC (RATIONALE 304): A randomized phase 3 trial. *J. Thorac. Oncol.* 16 (9), 1512–1522. doi:10.1016/j.jtho.2021.05.005
- Lu, S., Ye, M., Ding, L., Tan, F., Fu, J., and Wu, B. (2017). Cost-effectiveness of gefitinib, icotinib, and pemetrexed-based chemotherapy as first-line treatments for advanced non-small cell lung cancer in China. *Oncotarget* 8 (6), 9996–10006. doi:10.18632/oncotarget.14310
- Nafees, B., Lloyd, A. J., Dewilde, S., Rajan, N., and Lorenzo, M. (2017). Health state utilities in non-small cell lung cancer: An international study. *Asia. Pac. J. Clin. Oncol.* 13 (5), e195–e203. doi:10.1111/ajco.12477
- National Bureau Of Statistics Of China (2021). *China statistical yearbook*. Available at: <http://www.stats.gov.cn/english/Statisticaldata/AnnualData/> (Accessed January 25, 2022).
- Rittmeyer, A., Barlesi, F., Waterkamp, D., Park, K., Ciardiello, F., von Pawel, J., et al. (2017). Atezolizumab versus docetaxel in patients with previously treated non-small-cell lung cancer (OAK): a phase 3, open-label, multicentre randomised controlled trial. *Lancet* 389 (10066), 255–265. doi:10.1016/S0140-6736(16)32517-X
- Sarfaty, M., Moore, A., Regazzi, A. M., Mitchell, A. P., and Rosenberg, J. E. (2021). The cost of enfortumab vedotin wastage due to vial size-A real-world analysis. *Cancers (Basel)* 13 (23), 5977. doi:10.3390/cancers13235977
- Shen, Y., Wu, B., Wang, X., and Zhu, J. (2018). Health state utilities in patients with advanced non-small-cell lung cancer in China. *J. Comp. Eff. Res.* 7 (5), 443–452. doi:10.2217/ceer-2017-0069
- Shi, J. F., Huang, H. Y., Guo, L. W., Shi, D., Gu, X. Y., Liang, H., et al. (2016). Quality-of-life and health utility scores for common cancers in China: a multicentre cross-sectional survey. *Lancet* 388, S29. doi:10.1016/s0140-6736(16)31956-0
- Sung, H., Ferlay, J., Siegel, R. L., Laversanne, M., Soerjomataram, I., Jemal, A., et al. (2021). Global cancer statistics 2020: GLOBOCAN estimates of incidence and mortality worldwide for 36 cancers in 185 countries. *Ca. Cancer J. Clin.* 71 (3), 209–249. doi:10.3322/caac.21660
- Tang, M., Song, P., and He, J. (2020). Progress on drug pricing negotiations in China. *Biosci. Trends* 13 (6), 464–468. doi:10.5582/bst.2019.01339
- Tian, X., Gu, T., Lee, M. H., and Dong, Z. (2022). Challenge and countermeasures for EGFR targeted therapy in non-small cell lung cancer. *Biochim. Biophys. Acta. Rev. Cancer* 1877 (1), 188645. doi:10.1016/j.bbcan.2021.188645
- Wang, Z., Zhao, J., Ma, Z., Cui, J., Shu, Y., Liu, Z., et al. (2020). A phase 2 study of tislelizumab in combination with platinum-based chemotherapy as first-line treatment for advanced lung cancer in Chinese patients. *Lung Cancer* 147, 259–268. doi:10.1016/j.lungcan.2020.06.007
- Wu, Y. L., Lu, S., Cheng, Y., Zhou, C., Wang, J., Mok, T., et al. (2019). Nivolumab versus docetaxel in a predominantly Chinese patient population with previously treated advanced NSCLC: CheckMate 078 randomized phase III clinical trial. *J. Thorac. Oncol.* 14 (5), 867–875. doi:10.1016/j.jtho.2019.01.006
- Xu, T., Xu, L., Xi, H., Zhang, Y., Zhou, Y., Chang, N., et al. (2022). Assessment of financial toxicity among patients with advanced lung cancer in western China. *Front. Public Health* 9, 754199. doi:10.3389/fpubh.2021.754199
- Yip, W., Fu, H., Chen, A. T., Zhai, T., Jian, W., Xu, R., et al. (2019). 10 years of health-care reform in China: Progress and gaps in universal health coverage. *Lancet* 394 (10204), 1192–1204. doi:10.1016/S0140-6736(19)32136-1
- Zhou, C., Huang, D. Z., Yu, X. M., Liu, Y. P., Fan, Y., Shu, Y. Q., et al. (2021). Abstract CT039: Results from RATIONALE 303: A global phase 3 study of tislelizumab (TIS) vs docetaxel (TAX) as second- or third-line therapy for patients with locally advanced or metastatic NSCLC. *Cancer Res.* 81 (13), CT039. Abstract nr CT039. doi:10.1158/1538-7445.am2021-c039