



# Corrigendum: Piperlongumine, a Novel TrxR1 Inhibitor, Induces Apoptosis in Hepatocellular Carcinoma Cells by ROS-Mediated ER Stress

Qianqian Zhang<sup>1</sup>, Weiqian Chen<sup>1</sup>, Xiuling Lv<sup>1</sup>, Qiaoyou Weng<sup>1</sup>, Minjiang Chen<sup>1</sup>, Ri Cui<sup>2</sup>, Guang Liang<sup>2\*</sup> and Jiansong Ji<sup>1\*</sup>

## OPEN ACCESS

### Edited and reviewed by:

Olivier Feron,  
Université Catholique de Louvain,  
Belgium

### \*Correspondence:

Guang Liang  
wzmliangguang@163.com  
Jiansong Ji  
lschrijs@163.com

### Specialty section:

This article was submitted to  
Pharmacology of Anti-Cancer Drugs,  
a section of the journal  
Frontiers in Pharmacology

Received: 20 December 2021

Accepted: 01 June 2022

Published: 08 July 2022

### Citation:

Zhang Q, Chen W, Lv X, Weng Q,  
Chen M, Cui R, Liang G and Ji J (2022)  
Corrigendum: Piperlongumine, a Novel  
TrxR1 Inhibitor, Induces Apoptosis in  
Hepatocellular Carcinoma Cells by  
ROS-Mediated ER Stress.  
Front. Pharmacol. 13:806724.  
doi: 10.3389/fphar.2022.806724

<sup>1</sup>Key Laboratory of Imaging Diagnosis and Minimally Invasive Intervention Research, the Fifth Affiliated Hospital of Wenzhou Medical University/Affiliated Lishui Hospital of Zhejiang University/Lishui Central Hospital, Lishui, China, <sup>2</sup>Chemical Biology Research Center, School of Pharmaceutical Sciences, Wenzhou Medical University, Wenzhou, China

**Keywords:** thioredoxin reductase 1, reactive oxygen species, hepatocellular carcinoma, endoplasmic reticular stress, piperlongumine

## A Corrigendum on

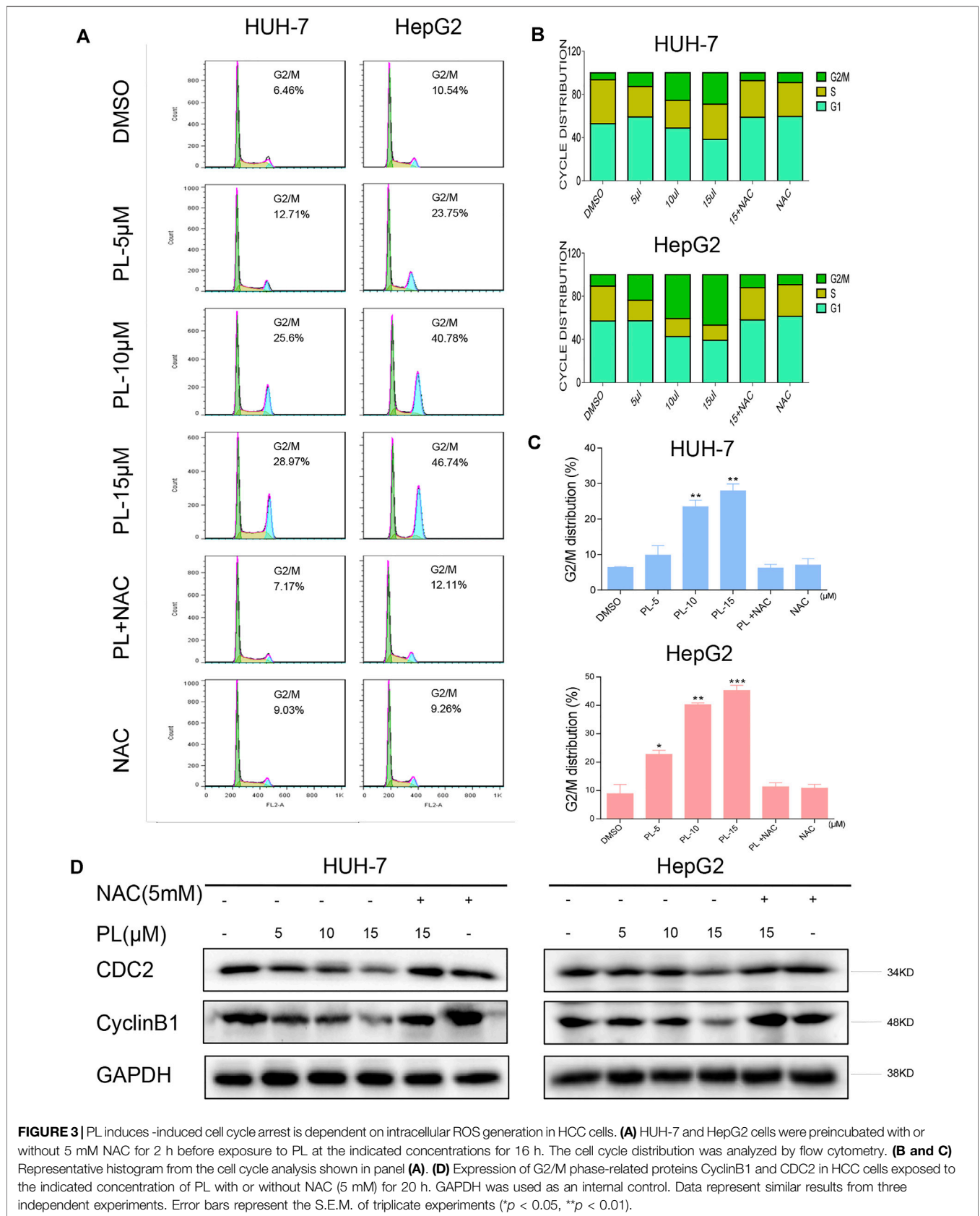
**Piperlongumine, a Novel TrxR1 Inhibitor, Induces Apoptosis in Hepatocellular Carcinoma Cells by ROS-Mediated ER Stress** by Zhang, Q., Chen, W., Lv, X., Weng, Q., Chen, M., Cui, R., Liang, G., and Ji, J. (2019). *Front. Pharmacol.* 10:1180. doi: 10.3389/fphar.2019.01180

In the original article, there was a mistake in “**Figure 3D**” as published. “we unintentionally used the same GAPDH images in the two figures (the GAPDH band below Bcl-2 in Figure 2D is the same one as in the **Figure 3D** which is below the CyclinB1 in both cells)”. The corrected “**Figure 3**” appears below.

The authors apologize for this error and state that this does not change the scientific conclusions of the article in any way. The original article has been updated.

**Publisher’s Note:** All claims expressed in this article are solely those of the authors and do not necessarily represent those of their affiliated organizations, or those of the publisher, the editors and the reviewers. Any product that may be evaluated in this article, or claim that may be made by its manufacturer, is not guaranteed or endorsed by the publisher.

Copyright © 2022 Zhang, Chen, Lv, Weng, Chen, Cui, Liang and Ji. This is an open-access article distributed under the terms of the Creative Commons Attribution License (CC BY). The use, distribution or reproduction in other forums is permitted, provided the original author(s) and the copyright owner(s) are credited and that the original publication in this journal is cited, in accordance with accepted academic practice. No use, distribution or reproduction is permitted which does not comply with these terms.



**FIGURE 3** | PL induces -induced cell cycle arrest is dependent on intracellular ROS generation in HCC cells. **(A)** HUH-7 and HepG2 cells were preincubated with or without 5 mM NAC for 2 h before exposure to PL at the indicated concentrations for 16 h. The cell cycle distribution was analyzed by flow cytometry. **(B and C)** Representative histogram from the cell cycle analysis shown in panel **(A)**. **(D)** Expression of G2/M phase-related proteins CyclinB1 and CDC2 in HCC cells exposed to the indicated concentration of PL with or without NAC (5 mM) for 20 h. GAPDH was used as an internal control. Data represent similar results from three independent experiments. Error bars represent the S.E.M. of triplicate experiments (\* $p < 0.05$ , \*\* $p < 0.01$ ).