



## OPEN ACCESS

EDITED AND REVIEWED BY  
Chien-shan Cheng,  
Shanghai Jiao Tong University, China

\*CORRESPONDENCE  
Pei-Ni Chen,  
peini@csmu.edu.tw  
Yih-Shou Hsieh,  
csmcsh@csmu.edu.tw

SPECIALTY SECTION  
This article was submitted to  
Pharmacology of Anti-Cancer Drugs,  
a section of the journal  
Frontiers in Pharmacology

RECEIVED 19 October 2022  
ACCEPTED 07 November 2022  
PUBLISHED 18 November 2022

CITATION  
Chang C-K, Chu S-C, Huang J-Y,  
Chen P-N and Hsieh Y-S (2022),  
Corrigendum: *Terminalia catappa* leaf  
extracts inhibited metastasis of  
A2058 and A375 melanoma cells *via*  
downregulating p-Src and  $\beta$ -catenin  
pathway *in vitro*.  
*Front. Pharmacol.* 13:1074693.  
doi: 10.3389/fphar.2022.1074693

COPYRIGHT  
© 2022 Chang, Chu, Huang, Chen and  
Hsieh. This is an open-access article  
distributed under the terms of the  
Creative Commons Attribution License  
(CC BY). The use, distribution or  
reproduction in other forums is  
permitted, provided the original  
author(s) and the copyright owner(s) are  
credited and that the original  
publication in this journal is cited, in  
accordance with accepted academic  
practice. No use, distribution or  
reproduction is permitted which does  
not comply with these terms.

# Corrigendum: *Terminalia catappa* leaf extracts inhibited metastasis of A2058 and A375 melanoma cells *via* downregulating p-Src and $\beta$ -catenin pathway *in vitro*

Chin-Kuo Chang<sup>1</sup>, Shu-Chen Chu<sup>2</sup>, Jing-Yang Huang<sup>1,3</sup>,  
Pei-Ni Chen<sup>1,3\*</sup> and Yih-Shou Hsieh<sup>4,5\*</sup>

<sup>1</sup>Institute of Medicine Chung Shan Medical University, Taichung, Taiwan, <sup>2</sup>Institute and Department of Food Science Central Taiwan University of Science and Technology, Taichung, Taiwan, <sup>3</sup>Department of Medical Research Chung Shan Medical University Hospital, Taichung, Taiwan, <sup>4</sup>Department of Biochemistry School of Medicine Chung Shan Medical University, Taichung, Taiwan, <sup>5</sup>Clinical Laboratory Chung Shan Medical University Hospital, Taichung, Taiwan

## KEYWORDS

*Terminalia catappa*, melanoma, antimetastasis, matrix metalloproteinases-2, Wnt/ $\beta$ catenin pathways

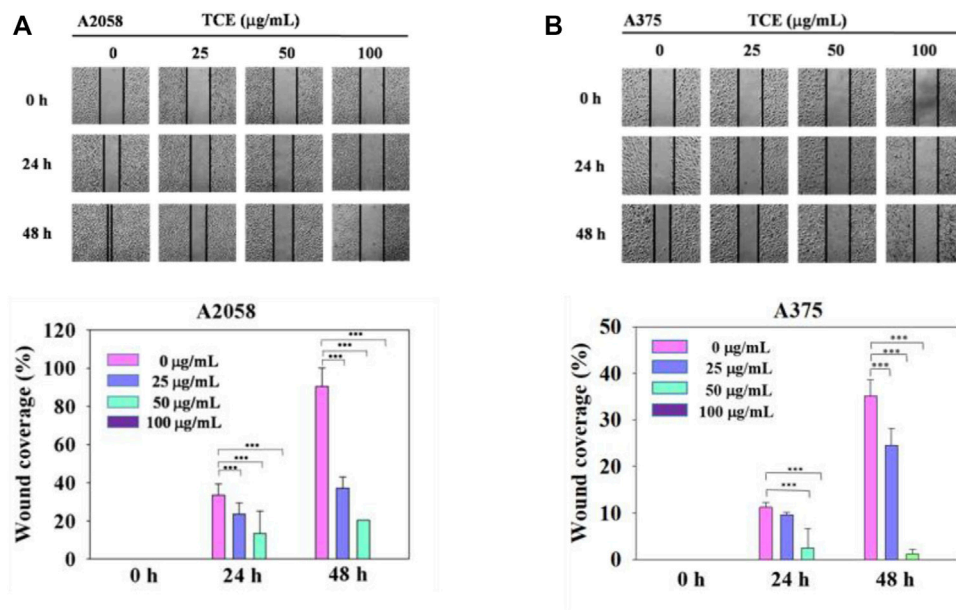
## A Corrigendum on

*Terminalia catappa* leaf extracts inhibited metastasis of A2058 and A375 melanoma cells *via* downregulating p-Src and  $\beta$ -catenin pathway *in vitro*

by Chang C-K, Chu S-C, Huang J-Y, Chen P-N and Hsieh Y-S (2022). *Front. Pharmacol.* 13: 963589. doi: 10.3389/fphar.2022.963589

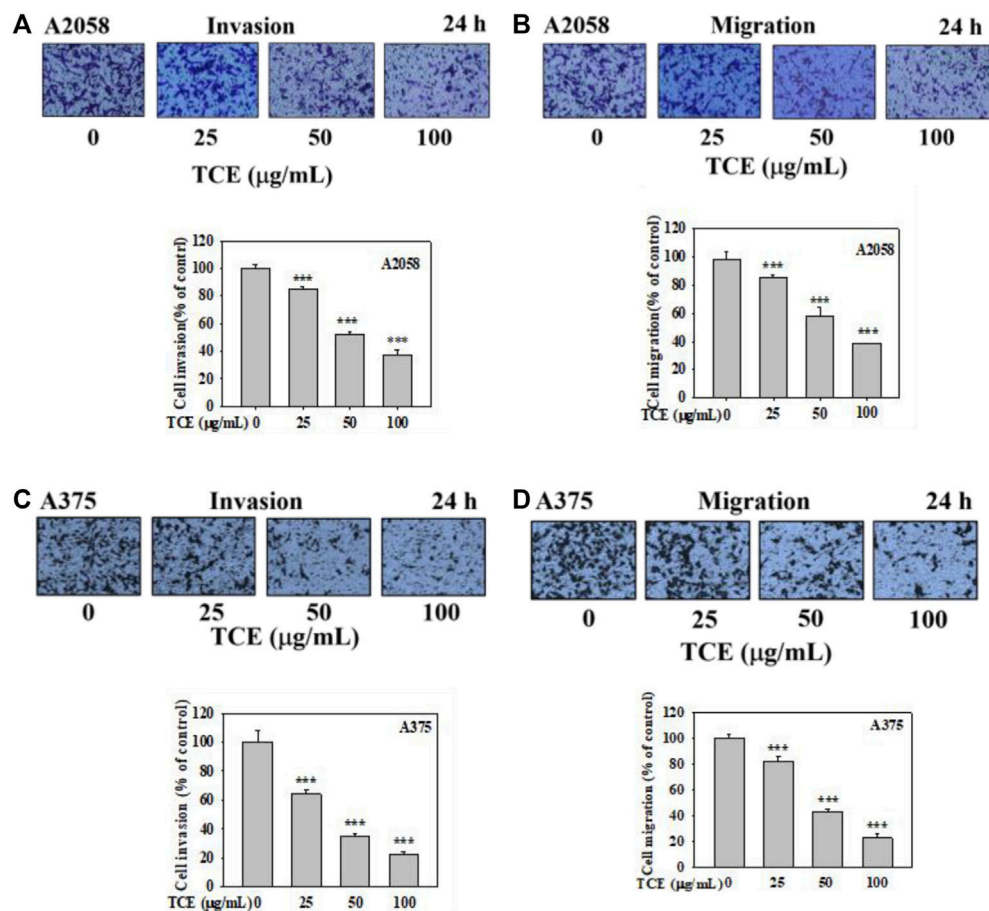
In the published article, there were two errors in Figures 4, 5. First, the unit of four concentrations in Figures 4A,B were mismarked as “mg/mL.” The correct unit should be “ $\mu$ g/mL” in the quantization map of Figures 4A,B. Second, the wrong images were used in Figures 5A,B (at the concentration of 25  $\mu$ g/mL). The corrected Figures 4, 5 and their captions appear below.

The authors apologize for these errors and states that this does not change the scientific conclusions of the article in any way. The original article has been updated.



**FIGURE 4**

The effects of TCE on the cell migration of A2058 and A375 cells. (A,B) Photographs showed wound closure of A2058 and A375 cells treated with TCE (0, 25, 50, 100 µg/mL) and 0, 24, 48 h. Cell wound healing assay was performed as described in the Materials and Methods. % Wound coverage was determined by the rate of cells moving forward the scratched area upon time. The values of percentage wound closure ± SD of at least three independent experiments. Comparisons were performed using two-way ANOVA with post hoc Turkey's test (\*\**p* < 0.05).



**FIGURE 5**

Effects of TCE on cell invasion and migration of A2058 and A375 cells. After being treated with TCE at a concentration of (0, 25, 50, 100 µg/mL) for 24 h, cell invasion and migration assay were then performed as described in the Materials and Methods. Representative images of A2058 and A375 cells on the lower side of membrane at different time points in the (A,C) invasion and (B,D) migration assay. A representative number of invading cells through the Matrigel and membrane were counted under the microscope for 10 random fields at a 3,200 magnification. The results were statistically evaluated using two-way ANOVA with post hoc Turkey's test (\*\* $p < 0.05$ ). The results from 3 repeated and separate experiments were similar.

## Publisher's note

All claims expressed in this article are solely those of the authors and do not necessarily represent those of their affiliated

organizations, or those of the publisher, the editors and the reviewers. Any product that may be evaluated in this article, or claim that may be made by its manufacturer, is not guaranteed or endorsed by the publisher.