



Pan-Cancer Analysis Reveals Alternative Splicing Characteristics Associated With Immune-Related Adverse Events Elicited by Checkpoint Immunotherapy

Xiujing He, Jing Yu and Hubing Shi*

Laboratory of Tumor Targeted and Immune Therapy, Clinical Research Center for Breast, State Key Laboratory of Biotherapy, West China Hospital, Sichuan University and Collaborative Innovation Center, Chengdu, China

OPEN ACCESS

Edited by:

Shuang Zhou,
University of Houston, United States

Reviewed by:

Qi Zhao,
University of Macau, China
Zhong Zheng,
University of California, Los Angeles,
United States

*Correspondence:

Hubing Shi
shihb@scu.edu.cn

Specialty section:

This article was submitted to
Drugs Outcomes Research and
Policies,
a section of the journal
Frontiers in Pharmacology

Received: 19 October 2021

Accepted: 08 November 2021

Published: 24 November 2021

Citation:

He X, Yu J and Shi H (2021) Pan-Cancer Analysis Reveals Alternative Splicing Characteristics Associated With Immune-Related Adverse Events Elicited by Checkpoint Immunotherapy. *Front. Pharmacol.* 12:797852. doi: 10.3389/fphar.2021.797852

Immune-related adverse events (irAEs) can impair the effectiveness and safety of immune checkpoint inhibitors (ICIs) and restrict the clinical applications of ICIs in oncology. The predictive biomarkers of irAE are urgently required for early diagnosis and subsequent management. The exact mechanism underlying irAEs remains to be fully elucidated, and the availability of predictive biomarkers is limited. Herein, we performed data mining by combining pharmacovigilance data and pan-cancer transcriptomic information to illustrate the relationships between alternative splicing characteristics and irAE risk of ICIs. Four distinct classes of splicing characteristics considered were associated with splicing factors, neoantigens, splicing isoforms, and splicing levels. Correlation analysis confirmed that expression levels of splicing factors were predictive of irAE risk. Adding *DHX16* expression to the bivariate PD-L1 protein expression-fPD1 model markedly enhanced the prediction for irAE. Furthermore, we identified 668 and 1,131 potential predictors based on the correlation of the incidence of irAEs with splicing frequency and isoform expression, respectively. The functional analysis revealed that alternative splicing might contribute to irAE pathogenesis via coordinating innate and adaptive immunity. Remarkably, autoimmune-related genes and autoantigens were preferentially over-represented in these predictors for irAE, suggesting a close link between autoimmunity and irAE occurrence. In addition, we established a trivariate model composed of CDC42EP3-206, TMEM138-211, and IRX3-202, that could better predict the risk of irAE across various cancer types, indicating a potential application as promising biomarkers for irAE. Our study not only highlights the clinical relevance of alternative splicing for irAE development during checkpoint immunotherapy but also sheds new light on the mechanisms underlying irAEs.

Keywords: immune-related adverse events, immune checkpoint inhibitors, cancer immunotherapy, alternative splicing, splicing isoforms

INTRODUCTION

Immune checkpoint inhibitors (ICIs) therapy has revolutionized the therapeutic landscape in oncology. These inhibitory drugs targeting immune checkpoints, such as cytotoxic T-lymphocyte-associated protein 4 (CTLA-4), programmed cell death protein 1 (PD-1), and its ligand (PD-L1), can bring long-lasting clinical benefits by eliciting immune responses against tumors in the treatment of various cancer entities (Bagchi et al., 2021). However, their application has been curtailed by incredibly diverse immune-related adverse events (irAEs) in the clinic. IrAEs can potentially affect almost every organ system and lead to fatal consequences in some cases (Postow et al., 2018). Most commonly, these fatal effects clinically manifest as colitis, hepatitis, pneumonitis, myocarditis, and neurologic effects (Wang et al., 2018). Among them, colitis is highly predominant and accounts for 70% of anti-CTLA-4-related fatalities, whereas anti-PD-1/PD-L1-related fatalities are often from pneumonitis, which results in 35% mortality (Wang et al., 2018). Therefore, early detection and diagnosis of irAEs as well as aggressive management are urgently required.

To improve patient selection and safety for ICI applications, numerous efforts to discover candidate biomarkers for irAE diagnosis and prediction are currently ongoing, which are essential to tailor safety monitoring protocols and treatment decisions. Nonetheless, studies on the mechanism of irAE onset and the corresponding biomarker development are still in the exploratory stage. Fortunately, several possible biomarkers for irAEs have been suggested, such as T-cell receptor (TCR) diversity (Johnson et al., 2016), CD8 T-cell clonal expansion (Subudhi et al., 2016), and tumor mutational burden (TMB) (Bomze et al., 2019). However, none of these factors is sufficient to achieve accurate risk prediction of irAEs and predictive performance needs to be evaluated in larger patient cohorts with ICI regimens. Hence, the identification of reliable biomarkers for irAEs prediction remains a critical challenge in cancer immunotherapy.

The FDA adverse event report system (FAERS) database, allowing relatively unbiased estimates for the relative risk for specific adverse events based on real-life patient populations, has been increasingly applied to biomarker discovery for drug adverse events (Bomze et al., 2019; Jing et al., 2020; Kerepesi et al., 2020; Van Hasselt et al., 2020). An elegant study revealed the significant association between TMB and irAEs occurrence during PD-1 immunotherapy by integrating real-world pharmacovigilance data from the FAERS database and mutation feature (Bomze et al., 2019). Similar strategies have also been successfully used to identify the additional biomarkers for irAEs (Bomze et al., 2019; Jing et al., 2020; Kerepesi et al., 2020), suggesting this strategy is robust and efficient, especially in the absence of a patient-sample cohort with sufficient sample size. The predictive potential of transcriptomic changes for irAEs has been demonstrated using this strategy, in which lymphocyte cytosolic protein 1 (*LCPI*) and adenosine diphosphate dependent glucokinase (*ADPGK*) served as biomarkers for irAE prediction by evaluating the correlation between multi-omics factors and irAE reporting odds ratios (ROR) calculated based on FAERS database (Jing et al., 2020).

Furthermore, the predictive performance of the combination of *LCPI* and *ADPGK* was validated in an independent patient-level validation cohort, demonstrating clinical utility in predicting irAEs in lung cancer (Jing et al., 2020).

As a pervasive and vital post-transcriptional regulatory mechanism, alternative splicing (AS) is partly responsible for transcript variation and proteome diversity, with more than 95% of transcribed human genes undergoing splicing (Pan et al., 2008). It is known that dysfunction of splicing processes contributes to cancer progression and therapy resistance, but the relevance of alternative splicing for the pathogenesis of irAE is still poorly understood. To fill this gap, we combine the power of real-world pharmacovigilance and omics data to determine if alternative splicing characteristics are associated with ICI-induced irAEs. The biomarker potential of AS for irAEs in cancer immunotherapy is also explored in this study. Our study provides a unique perspective on the links between AS and irAEs.

METHODS

Data Collection and Pre-Processing

We considered four distinct classes of splicing characteristics: 1) The expression abundances of splicing factors: We downloaded high-quality gene expression profiles of The Cancer Genome Atlas (TCGA) samples from UCSC Xena (Goldman et al., 2021). A total of 404 known and potential auxiliary splicing factors obtained from Seiler et al. (2018) were subjected to downstream analysis. The splicing factors with low abundances were removed (the max TPM value >10, and the median TPM value >2). The median values of each splicing factor were calculated for each cancer type and were in the form of $\log_2(\text{Transcripts Per Million [TPM]}+0.001)$. 2) Descriptors of splicing levels, including splicing load and splicing frequency. The profiles of all five major alternative splicing types identified in TCGA samples were downloaded from the Genomic Data Commons (Kahles et al., 2018). To build a confident set of AS events, we implemented a series of stringent filters. AS events detected in more than ten samples were included in the subsequent analysis. We then filtered out splicing events with $\text{PSI} < 0.05$, or $\text{PSI} > 0.95$ to reduce the incidence of false positives (Pimentel et al., 2014). Splicing load was determined using filtered AS events of TCGA samples. We counted the number of all AS events per given sample as the total splicing load. The median values of the total splicing load were calculated for each cancer type. Towards obtaining a more detailed view of splicing load, we considered splicing load for each AS type separately. We further classified AS events into four categories, with highly included ($\text{PSI} > 80\%$), mid-included ($40\% < \text{PSI} < 80\%$), mid-excluded ($20\% < \text{PSI} < 40\%$) and highly excluded events ($\text{PSI} < 20\%$), as described in a previous study (Agirre et al., 2021). Splicing load for each AS category was calculated as described above, and the median values for each cancer type were obtained. Splicing frequency for the individual gene was defined as the proportion of samples with AS events detected. 3) Neoantigen-related variables, including neojunction load and autoantigen load. For neojunction load,

the number of neojunctions per sample for TCGA cancer types was obtained from the Genomic Data Commons (Kahles et al., 2018), and the median values of neojunction load were calculated for each cancer type. We then counted the number of AS events of autoantigen genes per given sample to calculate the splicing load of autoantigen genes. Autoantigen genes were retrieved from the AAgAtlas database (Wang et al., 2016). 4) The expression abundances of splicing isoforms: We collected splicing isoform expression profiles of TCGA samples from UCSC Xena (Goldman et al., 2021). Low abundance isoforms were removed (the max TPM value >10, and the median TPM value >2). The median values of each isoform were calculated for each cancer type and converted into \log_2 (TPM+0.001). Additionally, we considered other factors that have been previously reported to be potentially associated with anti-PD1/PD-L1 response, including 36 variables belonging to three distinct classes (Lee and Rupp, 2019).

To obtain unbiased estimates of clinical risk of ICI-associated irAEs, reporting odds ratios (RORs), a measure of disproportionality used in pharmacovigilance databases, were obtained from Jing et al. (2020). IrAE RORs were calculated as follows: Individual safety reports submitted between July 2014 and June 2019 were retrieved from the FAERS database. We considered only reports for which anti-PD-1/PD-L1 agents (cemiplimab, nivolumab, pembrolizumab, atezolizumab, avelumab, and durvalumab) were the suspected cause of adverse events. Disproportionality analysis (Bate and Evans, 2009) was then performed to estimate irAE RORs by using the entire database as the comparator. We considered cancer types only for which there were at least 1,000 cases receiving ICIs therapy reported in FAERS. These cancer types include Bladder Urothelial Carcinoma [BLCA], Breast invasive carcinoma [BRCA], Cervical squamous cell carcinoma and endocervical adenocarcinoma [CESC], Cholangiocarcinoma [CHOL], Colon adenocarcinoma [COAD], Esophageal carcinoma [ESCA], Glioblastoma multiforme [GBM], Head and Neck squamous cell carcinoma [HNSC], Liver hepatocellular carcinoma [LIHC], Lung adenocarcinoma [LUAD], Lung squamous cell carcinoma [LUSC], Mesothelioma [MESO], Ovarian serous cystadenocarcinoma [OV], Pancreatic adenocarcinoma [PAAD], Prostate adenocarcinoma [PRAD], Sarcoma [SARC], Skin Cutaneous Melanoma [SKCM], Stomach adenocarcinoma [STAD], Uterine Corpus Endometrial Carcinoma [UCEC].

Identification of Potential irAE Biomarkers by Combining Alternative Splicing Characteristics and Pharmacovigilance Data

For the scenarios with fewer observations than features, as in the case of our study, the advanced algorithms could have an inflated type I error and subsequently cause more false positives, such as Ridge, LASSO, and Elastic Net regression (Wu and Ma, 2015; Kirpich et al., 2018; Jing et al., 2020). Therefore, we employed an approach to identify splicing characteristics most strongly associated with irAE risk, as described in a previous study (Lee and Rupp, 2019). We first measured the correlation

between single variable and irAE ROR to identify potential biomarkers for irAE risk. Subsequently, we performed a standard regression analysis with leave-one-out cross-validation in predicting irAE ROR from bivariate and trivariate linear-regression models using caret package (Kuhn, 2008). The predictive performance was evaluated based on Spearman rank correlation coefficient (R_s) and unexplained variance ($1-R_s^2$). For comparison, the goodness of fit between different models was assessed by a log-likelihood ratio test using lmtest package (Hothorn et al., 2015). Statistical significance was defined as $p < 0.05$.

Functional Annotation and Enrichment Analysis

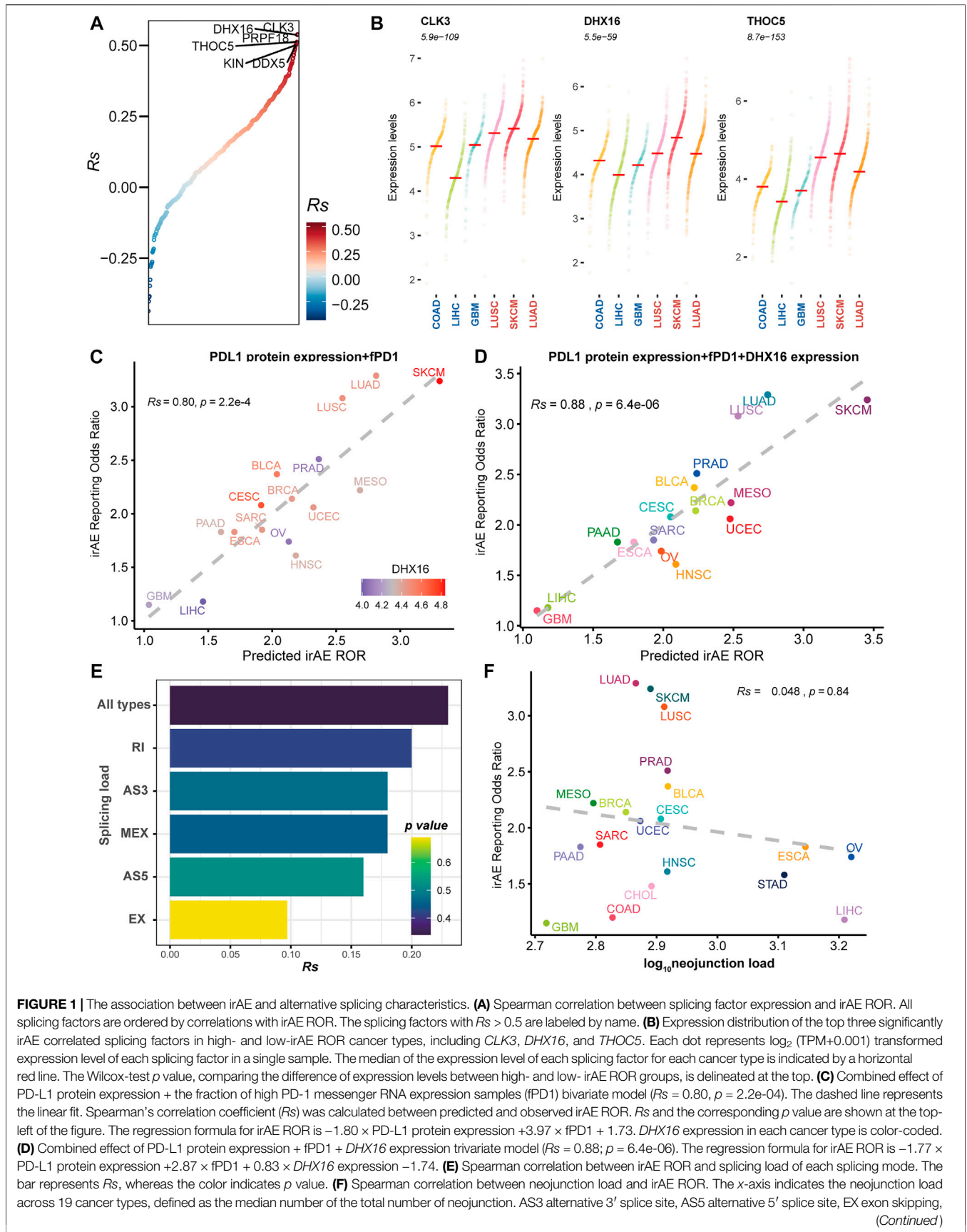
The parental genes of splicing isoforms were subjected to biological function annotation and enrichment analysis using clusterProfiler package (Yu et al., 2012) and KOBAS online tool (Xie et al., 2011). The level of significance was defined as q value or corrected p value < 0.05 . GO term complexity was reduced by measuring semantic similarity using rrvgo (Sayols, 2020). Gene set enrichment analysis (GSEA) (Subramanian et al., 2005) was employed to dissect the immune-related and autoimmune gene sets significantly associated with irAE-related genes. Autoimmune gene sets were derived from Gene and Autoimmune Disease Association Database (GAAD) (Lu et al., 2018), and immune-related gene sets were collected from the literature (Fischer and Rausell, 2016) and ImmuneDB (Rosenfeld et al., 2017) (**Supplementary Table S1**). All genes were ranked concerning their correlation with irAE ROR. Gene set variation analysis (GSVA) (Hänzelmann et al., 2013) was used to obtain the GSVA enrichment scores of each sample against immune-related gene sets. Gene sets were considered significantly enriched if their adjusted p -value was < 0.05 .

RESULTS

The Association Between irAEs and Alternative Splicing Characteristics

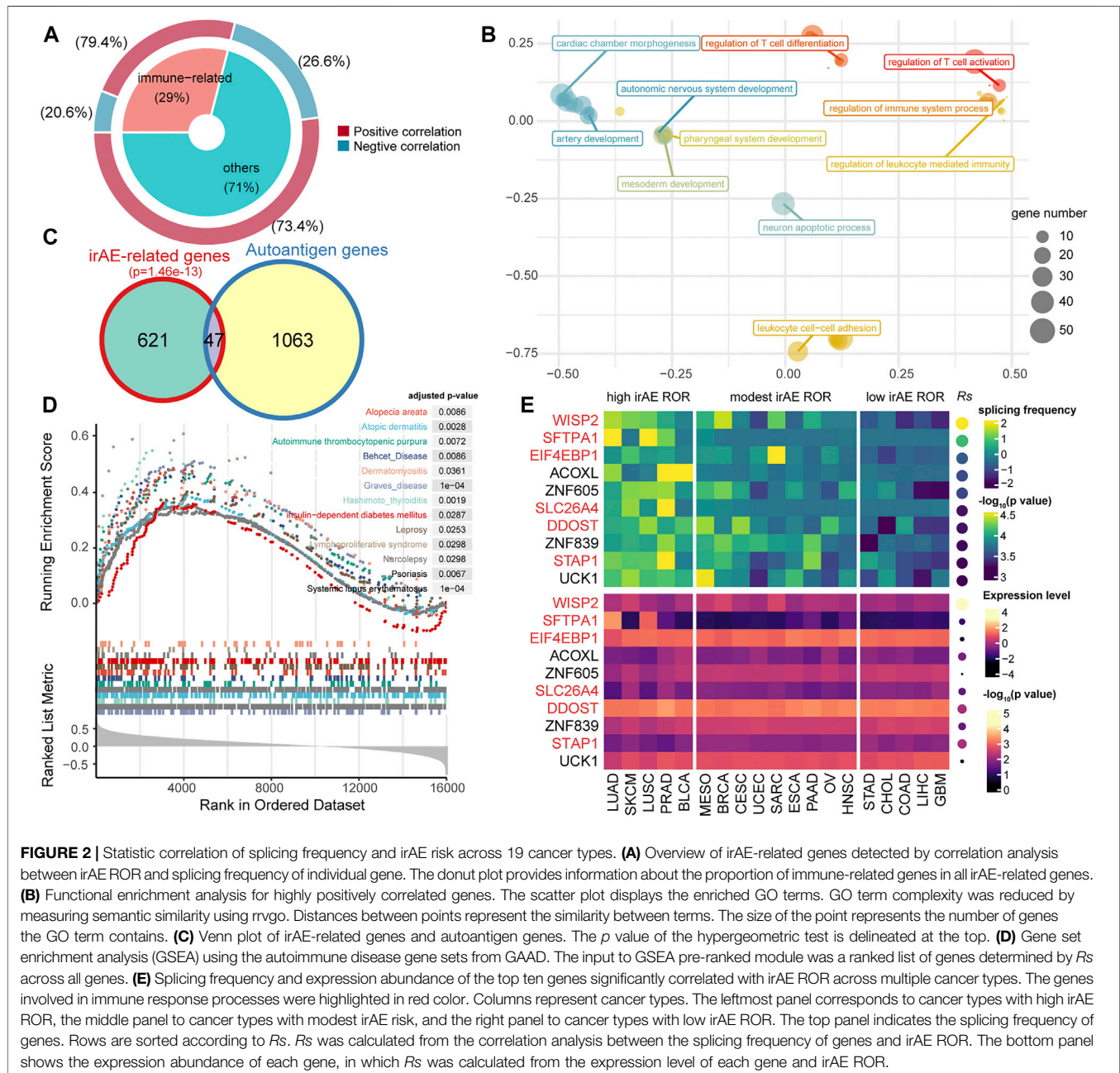
To delineate the relationship between immune-related adverse events and alternative splicing, we studied 19 cancer types for which alternative splicing characteristics from 6906 TCGA patients and irAE reporting odds ratio (ROR) were available. We first focused on splicing factors reported to modulate alternative splicing. We evaluated the association of the expression levels of splicing factors and irAE ROR. We identified twelve potential predictors with R_s within the range of [0.46, 0.54] (**Supplementary Table S2** and **Figure 1A**). Among them, slightly higher correlations were observed in CDC like kinase 3 (*CLK3*), ATP-dependent RNA helicase (*DHX16*), and THO Complex 5 (*THOC5*) (**Figure 1A**). Compared to cancer types with low ROR, these predictors were more abundant in high ROR ones (**Figure 1B**).

We then asked whether these splicing factors could enhance the prediction performance of other predictive factors, which



(Continued)

FIGURE 1 | MEX mutually exclusive exons, RI intron retention, irAE immune-related adverse events, ROR reporting odds ratio, LUAD lung adenocarcinoma, SKCM skin cutaneous melanoma, LUSC lung squamous cell carcinoma, PRAD prostate adenocarcinoma, BLCA bladder urothelial carcinoma, MESO mesothelioma, BRCA breast invasive carcinoma, CESC cervical squamous cell carcinoma and endocervical adenocarcinoma, UCEC uterine corpus endometrial carcinoma, SARC sarcoma, ESCA esophageal carcinoma, PAAD pancreatic adenocarcinoma, OV ovarian serous cystadenocarcinoma, HNSC head and neck squamous cell carcinoma, STAD stomach adenocarcinoma, CHOL cholangiocarcinoma, COAD colon adenocarcinoma, LIHC liver hepatocellular carcinoma, GBM glioblastoma multiforme.



were significantly correlated to irAE risk (**Supplementary Figure S1**). The combined PD-L1 protein expression and the fraction of high PD-1 messenger RNA expression samples (fPD1) model was highly correlated with irAE ROR ($R_s = 0.80$, $p = 2.2e-04$), explaining more than 64% of the irAE ROR variance observed across different tumor types. Notably, most of the cancer types

that showed higher irAE ROR than predicted by the combined PD-L1 protein expression and fPD1 model had higher *DHX16* expression abundances, whereas those showing lower than bivariate model-based predicted irAE risk had lower *DHX16* expression levels (**Figure 1C**). Accordingly, trivariate model combining PD-L1 protein expression, fPD1 and *DHX16*

expression markedly enhanced the irAE prediction ($R_s = 0.88$, $p = 6.4e-06$; **Figure 1D**) with a significant log-likelihood model improvement compared with bivariate model ($p < 2.2e-16$). The multicollinearity assessment among the variables showed that no variable exceeded the critical values of VIF >4 (**Supplementary Figure S2**). These results suggested that these splicing factors can hold promise as biomarkers for irAEs.

Neoantigens stemmed from TMB have been suggested to contribute to irAE development (Bomze et al., 2019). Given that alternative splicing is an important source of potential neoantigens (Lee and Rupp, 2019), we hereby assessed the predictive potential of splicing load and neojunction load for irAE risk. No significant correlations existed between irAE risk and splicing load, as well as neojunction load (**Figures 1E,F** and **Supplementary Figure S3**). Increased predictive performance was detected in the bivariate model combining neojunction load and mutational burden, albeit the statistical significance cutoff was not met (**Supplementary Figure S4**). The splicing load of autoantigen genes was also irrelevant to irAE ROR (**Supplementary Figure S5**). These observations, although unexpected, led us to consider that the role of alternative splicing in irAE pathogenesis may be predominantly mediated through impacting a portion of protein function, rather than releasing excess altered antigens.

Statistic Association of Gene Splicing Frequency and irAE ROR

We used splicing frequencies of genes as indicators and evaluated the association between these indicators and irAE risk. Positive or negative hits were defined as irAE-related genes ($p < 0.05$). We identified 668 potential predictors based on correlation analysis (**Supplementary Table S3**). Notably, the preponderance of irAE-related genes identified was positively correlated with irAE risk, with a smaller number was inversely correlated to irAE ROR (**Figure 2A**). The genes highly positively associated with irAE ($R_s > 0.5$, $p < 0.05$) were significantly enriched in immune response processes, including leukocyte mediated immunity, regulation of immune system process, as well as T-cell differentiation and activation (**Figure 2B**). Strikingly, autoantigen genes were preferentially over-represented in irAE-related genes ($p = 1.46e-13$, hypergeometric test; **Figure 2C**), suggesting a close link between autoimmunity and irAE development. Gene set enrichment analysis reinforced the above findings, in which irAE ROR positively correlated genes were significantly enriched in autoimmune disease gene sets (**Figure 2D**). These results suggested that alternative splicing might contribute to the connection between autoimmunity and irAEs development.

The splicing frequencies of the top ten irAE ROR correlated genes were depicted by heatmap (**Figure 2E**). More than half of them were reported to be involved in immune response processes (**Figure 2E**). Of particular interest, Wnt-1 induced secreted protein-2 (*WISP2/CCN5*), which is involved in inflammation response and autoimmune disease (Tanaka et al., 2005; Macdonald et al., 2021), achieved the highest correlation coefficient ($R_s = 0.81$, $p = 2.82e-5$; **Figure 2E**). In addition, the expression levels of most predictors were independent of irAE ROR (**Figure 2E**), indicating extraordinary predictive values of gene splicing frequency for irAE risk.

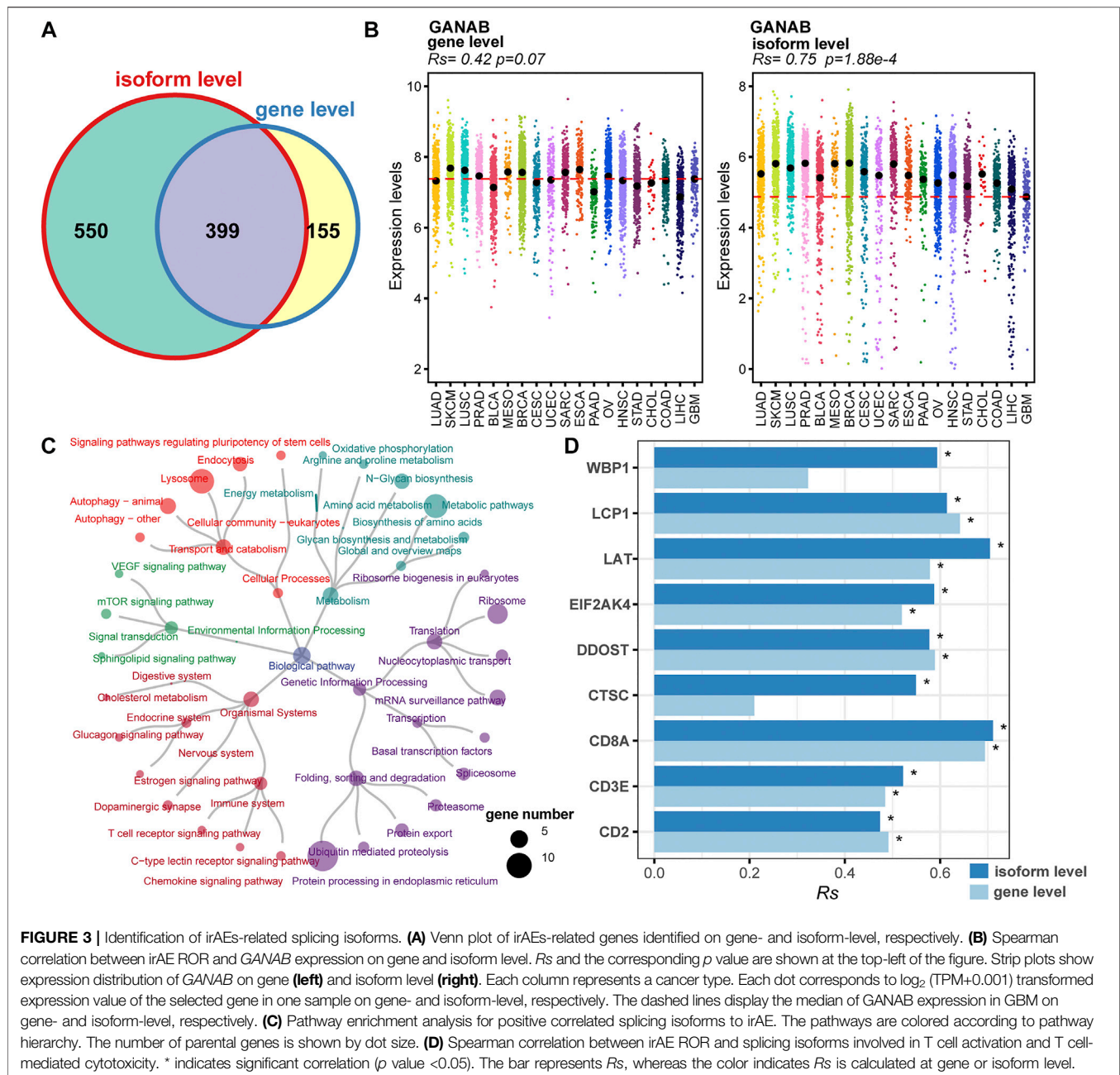
Comprehensive Identification for Potential irAE Biomarkers on Isoform-Level

Splicing isoforms produced by alternative splicing encompass the information about expression abundance and differences in exon inclusion or exclusion, which may be valuable resources to derive surrogate biomarkers for irAEs. Thus, we detected and characterized the relationship between the expression of splicing isoforms and irAE ROR using pan-cancer data. In total, 1,131 splicing isoforms derived from 949 genes, were significantly associated with irAE ROR (**Figure 3A**). Particularly, 550 genes corresponding to 618 splicing isoforms were significantly correlated with irAE risk only on isoform-level (**Figure 3A**), such as *GANAB*, *ELP2*, and *MTCH1*, which would be overlooked by standard gene-level analysis. As exhibited in **Figure 3B**, *GANAB-201* was the strongest positive correlate of irAE ROR ($R_s = 0.75$; $p = 1.88e-4$), but the expression level of its parental gene was unrelated to irAE ROR (**Figure 3B**).

We applied pathway enrichment analysis to analyze irAE-related splicing isoforms. Enriched pathways were divided into five groups based on functional hierarchy. Significantly, immune-related pathways were highly enriched, such as T cell receptor signaling pathway, chemokine signaling pathway, and C-type lectin receptor signaling pathway (**Figure 3C**). Specifically, several genes involved in T cell activation and T cell mediated cytotoxicity were significantly correlated with irAE ROR on isoform-level (**Figure 3D**), such as *WBPI*, *LAT*, *EIF2AK4*, and *CTSC*, suggesting alternative splicing may mediate irAE development by fine-tuning gene expression. Other pathways related to metabolism, genetic information processing, and signal transduction were also strongly enriched (**Figure 3C**), indicating that there is likely substantial complexity underlying irAE development, although currently analyses remain do not offer proof of causal relationships.

To further explore the function of irAE-related splicing isoforms, three curated gene sets related to innate and adaptive immune responses, as well as autoimmune diseases were used to characterize the immune phenotype (**Figure 4A**). A relatively large proportion of highly positively correlated splicing isoforms were involved in innate immune response and autoimmune diseases (**Figure 4A**). Function enrichment analysis revealed innate immune response-related predictors participated in important immune response processes, such as T cell mediated immunity, interleukin-10 production, and T cell activation (**Figure 4B**). GSVA analysis further revealed that innate immune response as major biology process activated in cancer types with high irAE risk (**Figure 4C**). Moreover, the adaptive immune response also exhibited a significant activity difference between high and low irAE ROR cancer types (**Supplementary Figure S6**). These results suggested alternative splicing might contribute to irAE pathogenesis via coordinating the activation of both innate and adaptive immunity.

Previous studies have suggested that irAEs are promising predictors for the efficacy of ICIs (Zhong et al., 2021). Therefore, we next asked whether these splicing isoforms could not only reflect irAE risk but also have the potential of

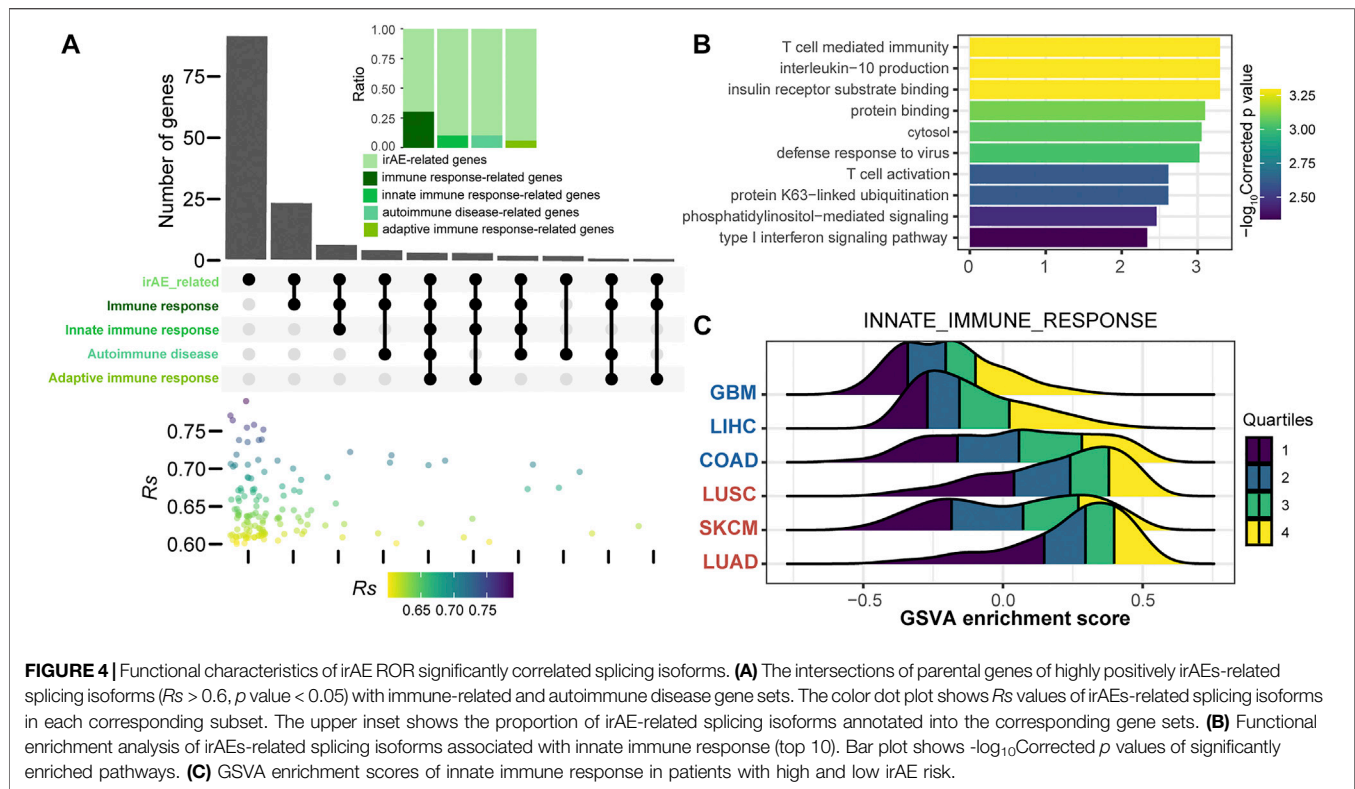


predicting response to ICIs. The result showed that only 30 splicing isoforms were also indicators of ICIs response based on the associations with the objective response rate (ORR) of 16 cancer types obtained from Lee and Ruppin (2019) (Supplementary Table S4).

Construction of Regression Model to Predict irAE Risk

We further sought to identify more powerful predictive models that can be more easily translated into clinical practice. The top ten irAE ROR significantly correlated splicing isoforms were utilized for building the irAE ROR predictions (Figure 5A).

These predictors were predominantly upregulated in cancer types with high irAE ROR compared to low irAE ROR cancer types (Figure 5B). CDC42EP3-206 was the most predictive of irAE risk across cancer types ($R_s = 0.79$, $p = 5.8e-05$), followed by TMEM138-211 ($R_s = 0.77$, $p = 1.1e-04$). Combinations between any two or three of these predictors were then evaluated by Spearman correlation and goodness of fit using the log-likelihood ratio test. Notably, the combination of CDC42EP3-206 and TMEM138-211 with most of the other predictors achieved better predictive performance (Figure 5C). Specifically, the CDC42EP3-206 + TMEM138-211 + IRX3-202-based model achieved maximum predictive efficacy ($R_s = 0.94$, FDR = $1.8e-09$), explaining more than 88% of the ROR variance observed



across different tumor types (Figures 5C,D). We further evaluated the performance of the combinations of CDC42EP3-206 + TMEM138-211 + IRX3-202 with other factors. Finally, we established a combination model composed of CDC42EP3-206, TMEM138-211, IRX3-202, and *PD-L1* gene expression (Figure 5E), with a slightly enhanced prediction performance ($R_s = 0.96$, $p = 8.7e-09$). The relationship assessment between these predictors indicated that no multicollinearity was detected, suggesting the independent prediction for irAE (Figure 5F).

DISCUSSION

Cancer treatment by immune checkpoint inhibitors holds promise for cancer therapy. With the growing use of ICIs, unpredictable irAEs exhibit a significant increase, and become a major obstacle for the optimal application of ICIs in cancer therapy. The predictive value of alternative splicing for prognosis and drug resistance has been suggested by several studies. However, the predictive potential of alternative splicing for irAE has not been clarified. To deeply understand the relevance of splicing modulation for irAE development, we systematically investigated the relationships between alternative splicing characteristics and irAE risk by integrating pharmacovigilance and molecular data.

Emerging evidence expounds the roles of splicing factors in cancer and immunity (Yang et al., 2021). The function of splicing factors in irAE development has not been described. In the present study, twelve splicing factors were identified to be

significantly correlated with irAE risk (Supplementary Table S2), suggesting predictive value for irAE. Indeed, adding *DHX16* to the bivariate *PD-L1* protein expression-*fPD1* model led to a trivariate regression model with a significantly improved accuracy and decreased the unexplained variance from 0.36 ($1-0.80^2$) to 0.23 ($1-0.88^2$) (Figure 2D). *DHX16* is linked to several malignant and autoimmune diseases, and its role in innate immunity has been documented (Gencheva et al., 2010; Hage et al., 2019). Our observation provides new evidence for splicing factors as another instrument for the regulation of irAEs.

By considering alternative splicing-derived, in addition to mutant-derived, peptides as potential antigens, we interrogated the associations between irAE risk and the descriptors associated with alternative splicing-derived neoantigens, including the total splicing load, neojunction load, and splicing load of autoantigen genes. We failed to find a correspondence between irAE risk and these descriptors (Figures 1E,F and Supplementary Figures S3–S5). The above evidence indicated that alternative splicing seems to affect irAE development by driving functional effects on particular genes rather than increasing overall splicing diversity to release excessive altered antigens. It is quite possible that a large fraction of the increased splicing diversity is a passenger due to disrupted splicing machinery in cancer cells, which often leads to a lower accuracy of splicing (Pickrell et al., 2010).

Alternative splicing is becoming increasingly recognized as an important mechanism for the generation of structural and functional diversity in proteins, which can alter protein function, and even remodel protein-protein interaction networks. Our analysis revealed a significant correlation

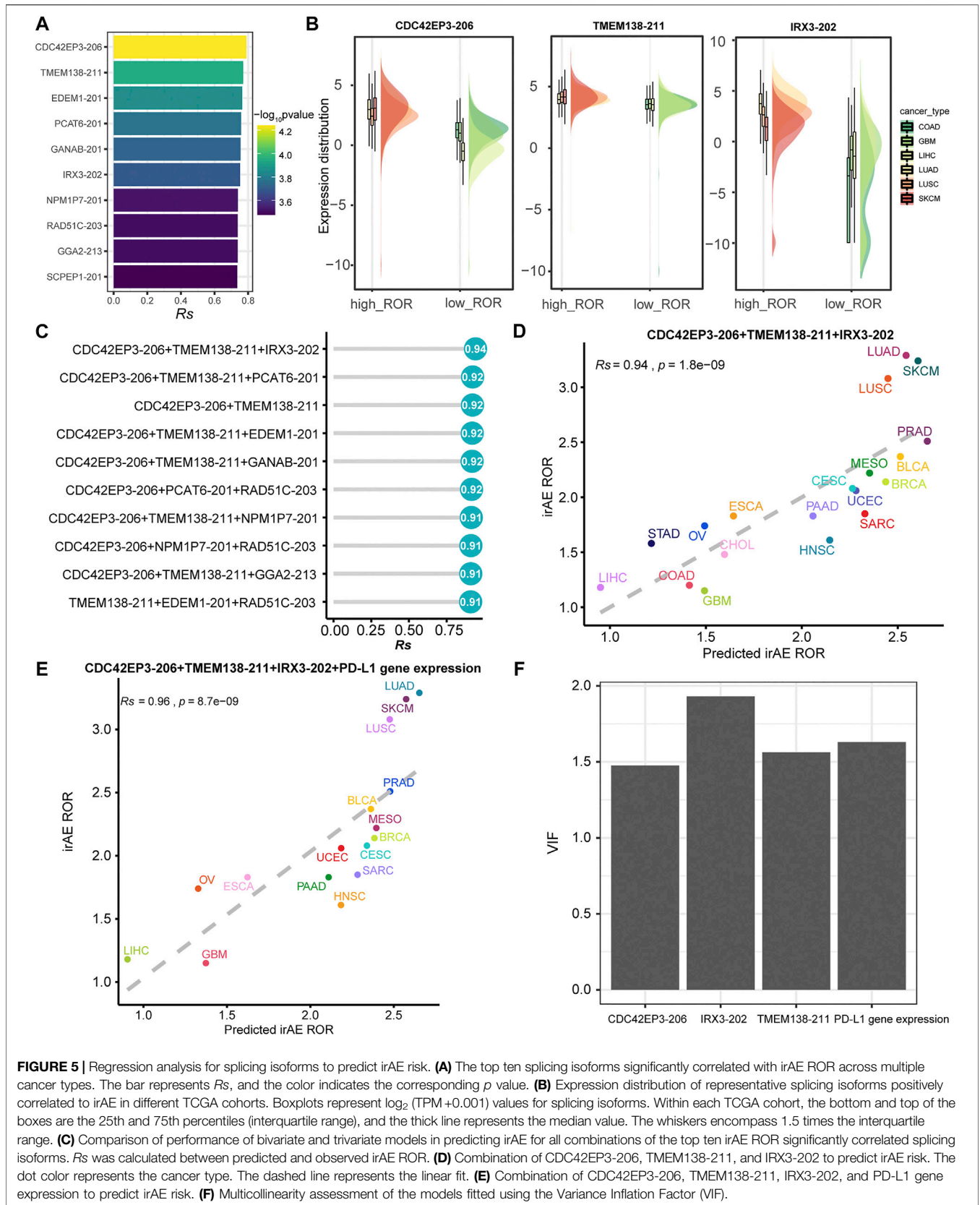


FIGURE 5 | Regression analysis for predicting isoforms to predict irAE risk. **(A)** The top ten splicing isoforms significantly correlated with irAE ROR across multiple cancer types. The bar represents R_s , and the color indicates the corresponding p value. **(B)** Expression distribution of representative splicing isoforms positively correlated to irAE in different TCGA cohorts. Boxplots represent \log_2 (TPM+0.001) values for splicing isoforms. Within each TCGA cohort, the bottom and top of the boxes are the 25th and 75th percentiles (interquartile range), and the thick line represents the median value. The whiskers encompass 1.5 times the interquartile range. **(C)** Comparison of performance of bivariate and trivariate models in predicting irAE for all combinations of the top ten irAE ROR significantly correlated splicing isoforms. R_s was calculated between predicted and observed irAE ROR. **(D)** Combination of CDC42EP3-206, TMEM138-211, and IRX3-202 to predict irAE risk. The dot color represents the cancer type. The dashed line represents the linear fit. **(E)** Combination of CDC42EP3-206, TMEM138-211, IRX3-202, and PD-L1 gene expression to predict irAE risk. **(F)** Multicollinearity assessment of the models fitted using the Variance Inflation Factor (VIF).

between the ROR of reporting an irAE during ICIs therapy and the corresponding gene splicing frequency across multiple cancer types. The prevalence of alternative splicing was found to be highest in genes related to immune response processes, especially in T cell differentiation and activation (**Figure 2B**). Moreover, nine splicing isoforms involved in T cell activation and T cell mediated cytotoxicity were significantly associated with irAE risk (**Figure 3C**). Our findings align well with the evidence of T cell response in irAE lesions. Our results also revealed significant enrichment of irAE-related splicing isoforms in signaling pathways that have been previously associated with irAEs, including mTOR and JAK/STAT signaling pathways (**Figure 3C, Supplementary Table S4**). The mTOR signaling pathway has an important role in the modulation of both innate and adaptive immune responses (Powell et al., 2012). Aberrant activation of mTOR signaling has been known to contribute to the pathogenesis of autoimmune disorders and cancer (Perl, 2015). Presumably, mTOR signaling has a similar pathogenic role and potential therapeutic target in irAEs. The mTOR inhibitor in combination with anti-PD-1 therapy did indeed maintain allograft tolerance without compromising anti-tumor efficacy (Esfahani et al., 2019). Similar to mTOR signaling, the JAK/STAT pathway has been implicated in the pathogenesis of autoimmune states and irAEs (Esfahani et al., 2020), and the inhibition of JAK/STAT signaling has led to remarkable remissions in the setting of autoimmune disorders (Lee et al., 2014; Sandborn et al., 2017). The mTOR and JAK/STAT signaling pathways have emerged as promising therapeutic targets for the treatment of irAEs. Besides, irAE-related predictors were also strongly enriched in other pathways related to metabolism, genetic information processing, and cellular processes (**Figure 3C**), indicating the complexity of the biological basis underlying irAE development. However, the impacts of these pathways for irAE pathogenesis have yet to be fully elucidated. Further research into the roles of these predictors during checkpoint blockade may be critical for developing combination therapies to uncouple the efficacy and toxicity of ICIs and overcome irAE risk.

Furthermore, a part of predictors for irAEs identified in the present study was related to autoimmune diseases (**Figure 2D and Figure 4A**). Specifically, numerous autoantigen genes with high splicing frequency were significantly correlated with irAE (**Figure 2C**). Therefore, we speculate that splicing of autoantigen genes may, to some extent, be related to irAE development. Increased noncanonical splicing of autoantigen genes augments the probability of confronting the immune system with intolerized epitopes and eventually leads to irAEs (Ng et al., 2004).

The current evidence points towards a crucial role of the innate immune system in potentially driving irAEs (Esfahani et al., 2020), as demonstrated in this study (**Figure 4**). Innate immune cells can mediate irAE development likely both in cooperation with and independent of adaptive immune cells (Lee et al., 2021). Studies have reported associations of irAEs with the recruitment of CD14⁺CD16⁺ monocytes (Curry et al., 2019), the presence of eosinophilia (Kizawa et al., 2019), increased neutrophil/lymphocyte ratio (NLR) (Drobni et al., 2020), as well as NK cell-mediated antibody-dependent cell-mediated cytotoxicity

(ADCC) reactions (Kelly et al., 2018). In addition to the innate immunity, seven genes related to the adaptive immune response also underwent alternative splicing and that were highly correlated with irAE risk (**Figure 4A**). Deciphering the connections between innate and adaptive immunity and adverse reactions from the perspective of alternative splicing holds promise for a better understanding of both processes.

To our knowledge, this is the first systematic evaluation of the relationship between alternative splicing characteristics and the risk of developing irAEs. Despite being preliminary, we envision that alternative splicing characteristics may represent meaningful biomarkers for irAEs and immunotherapy response in clinical practice. Understanding the factors that contribute to irAE development may help prevent and treat irAEs in patients undergoing ICIs. To establish alternative splicing characteristics as new biomarkers for irAE development, further studies will be needed to validate our findings in a larger, independent cohort. It would be of significant interest to test the clinical utility of these predictors in ICI decision-making in a prospective clinical trial.

DATA AVAILABILITY STATEMENT

Individual safety records can be accessed through FAERS Public Dashboard (<https://www.fda.gov/drugs/questions-and-answers-fdas-adverse-event-reporting-system-faers/fda-adverse-event-reporting-system-faers-public-dashboard>). The PSI values of AS events detected in TCGA cohorts were downloaded from the Genomic Data Commons (<https://gdc.cancer.gov/about-data/publications/PanCanAtlas-Splicing-2018>) (Kahles et al., 2018). TPM-normalized gene and isoform expression data were obtained from UCSC Xena browser (<https://xenabrowser.net/>) (Jing et al., 2020). All the remaining data will be available from the author upon reasonable request.

AUTHOR CONTRIBUTIONS

XH and HS: conceptualization. XH and JY: bioinformatics analysis. XH, JY, and HS: methodology. XH and JY: project administration. XH: writing-original draft. XH, JY, and HS: writing-review and editing. All authors have read and agreed to the published version of the manuscript.

FUNDING

This work was supported by the National Natural Science Foundation of China (81902792).

SUPPLEMENTARY MATERIAL

The Supplementary Material for this article can be found online at: <https://www.frontiersin.org/articles/10.3389/fphar.2021.797852/full#supplementary-material>

REFERENCES

- Agirre, E., Oldfield, A., Bellora, N., Segelle, A., and Luco, R. (2021). Splicing-associated Chromatin Signatures: a Combinatorial and Position-dependent Role for Histone marks in Splicing Definition. *Nat. Commun.* 12, 1–16. doi:10.1038/s41467-021-20979-x
- Bagchi, S., Yuan, R., and Engleman, E. G. (2021). Immune Checkpoint Inhibitors for the Treatment of Cancer: Clinical Impact and Mechanisms of Response and Resistance. *Annu. Rev. Pathol. Mech. Dis.* 16, 223–249. doi:10.1146/annurev-pathol-042020-042741
- Bate, A., and Evans, S. J. (2009). Quantitative Signal Detection Using Spontaneous ADR Reporting. *Pharmacoepidemiol. Drug Saf.* 18, 427–436. doi:10.1002/pds.1742
- Bomze, D., Hasan Ali, O., Bate, A., and Flatz, L. (2019). Association between Immune-Related Adverse Events during Anti-PD-1 Therapy and Tumor Mutational Burden. *JAMA Oncol.* 5, 1633–1635. doi:10.1001/jamaoncol.2019.3221
- Curry, J. L., Reuben, A., Szczepaniak-Sloane, R., Ning, J., Milton, D. R., Lee, C. H., et al. (2019). Gene Expression Profiling of Lichenoid Dermatitis Immune-Related Adverse Event from Immune Checkpoint Inhibitors Reveals Increased CD14+ and CD16+ Monocytes Driving an Innate Immune Response. *J. Cutan. Pathol.* 46, 627–636. doi:10.1111/cup.13454
- Drobni, Z. D., Zafar, A., Zubiri, L., Zlotoff, D. A., Alvi, R. M., Lee, C., et al. (2020). Decreased Absolute Lymphocyte Count and Increased Neutrophil/Lymphocyte Ratio with Immune Checkpoint Inhibitor-Associated Myocarditis. *J. Am. Heart Assoc.* 9, e018306. doi:10.1161/JAHA.120.018306
- Esfahani, K., Al-Aubodah, T. A., Thebault, P., Lapointe, R., Hudson, M., Johnson, N. A., et al. (2019). Targeting the mTOR Pathway Uncouples the Efficacy and Toxicity of PD-1 Blockade in Renal Transplantation. *Nat. Commun.* 10, 4712–4719. doi:10.1038/s41467-019-12628-1
- Esfahani, K., Elkrif, A., Calabrese, C., Lapointe, R., Hudson, M., Routy, B., et al. (2020). Moving towards Personalized Treatments of Immune-Related Adverse Events. *Nat. Rev. Clin. Oncol.* 17, 504–515. doi:10.1038/s41571-020-0352-8
- Fischer, A., and Rausell, A. (2016). Primary Immunodeficiencies Suggest Redundancy within the Human Immune System. *Sci. Immunol.* 1, eaah5861. doi:10.1126/sciimmunol.aah5861
- Gencheva, M., Kato, M., Newo, A. N., and Lin, R. J. (2010). Contribution of DEAH-Box Protein DHX16 in Human Pre-mRNA Splicing. *Biochem. J.* 429, 25–32. doi:10.1042/BJ20100266
- Goldman, M. J., Craft, B., Zhu, J.-C., and Haussler, D. (2021). *UCSC Xena for the Visualization and Analysis of Cancer Genomics Data*. Philadelphia, Pennsylvania, United States: AACR.
- Hage, A., Bharaj, P., and Rajsbaum, R. (2019). *Induction of Innate Antiviral Immunity through a Novel Pattern Recognition Receptor, the RNA Helicase DHX16, Is Regulated by Unanchored K48-Linked Poly-Ubiquitin Chains*. Rockville, Maryland: Am Assoc Immunol.
- Hänzelmann, S., Castelo, R., and Guinney, J. (2013). GSVA: Gene Set Variation Analysis for Microarray and RNA-Seq Data. *BMC bioinformatics* 14, 7–15. doi:10.1186/1471-2105-14-7
- Hothorn, T., Zeileis, A., Farebrother, R. W., Cummins, C., Millo, G., Mitchell, D., et al. (2015). *Package 'lmtree'. Testing Linear Regression Models*. Available at: <https://cran.r-project.org/web/packages/lmtree/lmtree.pdf>.
- Jing, Y., Liu, J., Ye, Y., Pan, L., Deng, H., Wang, Y., et al. (2020). Multi-omics Prediction of Immune-Related Adverse Events during Checkpoint Immunotherapy. *Nat. Commun.* 11, 4946–4947. doi:10.1038/s41467-020-18742-9
- Johnson, D. B., Balko, J. M., Compton, M. L., Chalkias, S., Gorham, J., Xu, Y., et al. (2016). Fulminant Myocarditis with Combination Immune Checkpoint Blockade. *N. Engl. J. Med.* 375, 1749–1755. doi:10.1056/NEJMoa1609214
- Kahles, A., Lehmann, K. V., Toussaint, N. C., Hüser, M., Stark, S. G., Sachsenberg, T., et al. (2018). Comprehensive Analysis of Alternative Splicing across Tumors from 8,705 Patients. *Cancer cell* 34, 211–224. doi:10.1016/j.ccell.2018.07.001
- Kelly, K., Infante, J. R., Taylor, M. H., Patel, M. R., Wong, D. J., Iannotti, N., et al. (2018). Safety Profile of Avelumab in Patients with Advanced Solid Tumors: a Pooled Analysis of Data from the Phase 1 JAVELIN Solid Tumor and Phase 2 JAVELIN Merkel 200 Clinical Trials. *Cancer* 124, 2010–2017. doi:10.1002/cncr.31293
- Kerepesi, C., Bakacs, T., Moss, R. W., Slavin, S., and Anderson, C. C. (2020). Significant Association between Tumor Mutational Burden and Immune-Related Adverse Events during Immune Checkpoint Inhibition Therapies. *Cancer Immunol. Immunother.* 69, 683–687. doi:10.1007/s00262-020-02543-6
- Kirpich, A., Ainsworth, E. A., Wedow, J. M., Newman, J. R. B., Michailidis, G., and McIntyre, L. M. (2018). Variable Selection in Omics Data: A Practical Evaluation of Small Sample Sizes. *PLoS one* 13, e0197910. doi:10.1371/journal.pone.0197910
- Kizawa, R., Miura, Y., Oda, Y., Nagaoka, Y., Ozaki, Y., Kondoh, C., et al. (2019). *Eosinophilia during Treatment of Immune Checkpoint Inhibitors (ICIs) to Predict Succeeding Onset of Immune-Related Adverse Events (irAEs)*. Alexandria, Virginia, United States: American Society of Clinical Oncology.
- Kuhn, M. (2008). Building Predictive Models in R Using the Caret Package. *J. Stat. Softw.* 28, 1–26. doi:10.18637/jss.v028.i05
- Lee, D. J., Lee, H. J., Farmer, J. R., and Reynolds, K. L. (2021). Mechanisms Driving Immune-Related Adverse Events in Cancer Patients Treated with Immune Checkpoint Inhibitors. *Curr. Cardiol. Rep.* 23, 98–12. doi:10.1007/s11886-021-01530-2
- Lee, E. B., Fleischmann, R., Hall, S., Wilkinson, B., Bradley, J. D., Gruben, D., et al. (2014). Tofacitinib versus Methotrexate in Rheumatoid Arthritis. *N. Engl. J. Med.* 370, 2377–2386. doi:10.1056/NEJMoa1310476
- Lee, J. S., and Ruppin, E. (2019). Multiomics Prediction of Response Rates to Therapies to Inhibit Programmed Cell Death 1 and Programmed Cell Death 1 Ligand 1. *JAMA Oncol.* 5, 1614–1618. doi:10.1001/jamaoncol.2019.2311
- Lu, G., Hao, X., Chen, W. H., and Mu, S. (2018). GAAD: a Gene and Autoimmune Disease Association Database. *Genomics Proteomics Bioinformatics* 16, 252–261. doi:10.1016/j.gpb.2018.05.001
- Macdonald, I. J., Huang, C. C., Liu, S. C., Lin, Y. Y., and Tang, C. H. (2021). Targeting CCN Proteins in Rheumatoid Arthritis and Osteoarthritis. *Int. J. Mol. Sci.* 22, 4340. doi:10.3390/ijms22094340
- Ng, B., Yang, F., Huston, D. P., Yan, Y., Yang, Y., Xiong, Z., et al. (2004). Increased Noncanonical Splicing of Autoantigen Transcripts Provides the Structural Basis for Expression of Untolerized Epitopes. *J. Allergy Clin. Immunol.* 114, 1463–1470. doi:10.1016/j.jaci.2004.09.006
- Pan, Q., Shai, O., Lee, L. J., Frey, B. J., and Blencowe, B. J. (2008). Deep Surveying of Alternative Splicing Complexity in the Human Transcriptome by High-Throughput Sequencing. *Nat. Genet.* 40, 1413–1415. doi:10.1038/ng.259
- Perl, A. (2015). mTOR Activation Is a Biomarker and a central Pathway to Autoimmune Disorders, Cancer, Obesity, and Aging. *Ann. N. Y. Acad. Sci.* 1346, 33–44. doi:10.1111/nyas.12756
- Pickrell, J. K., Pai, A. A., Gilad, Y., and Pritchard, J. K. (2010). Noisy Splicing Drives mRNA Isoform Diversity in Human Cells. *Plos Genet.* 6, e1001236. doi:10.1371/journal.pgen.1001236
- Pimentel, H., Parra, M., Gee, S., Ghanem, D., An, X., Li, J., et al. (2014). A Dynamic Alternative Splicing Program Regulates Gene Expression during Terminal Erythropoiesis. *Nucleic Acids Res.* 42, 4031–4042. doi:10.1093/nar/gkt1388
- Postow, M. A., Sidlow, R., and Hellmann, M. D. (2018). Immune-related Adverse Events Associated with Immune Checkpoint Blockade. *N. Engl. J. Med.* 378, 158–168. doi:10.1056/NEJMra1703481
- Powell, J. D., Pollizzi, K. N., Heikamp, E. B., and Horton, M. R. (2012). Regulation of Immune Responses by mTOR. *Annu. Rev. Immunol.* 30, 39–68. doi:10.1146/annurev-immunol-020711-075024
- Rosenfeld, A. M., Meng, W., Luning Prak, E. T., and Hershberg, U. (2017). ImmuneDB: a System for the Analysis and Exploration of High-Throughput Adaptive Immune Receptor Sequencing Data. *Bioinformatics* 33, 292–293. doi:10.1093/bioinformatics/btw593
- Sandborn, W. J., Su, C., Sands, B. E., D'Haens, G. R., Vermeire, S., Schreiber, S., et al. (2017). Tofacitinib as Induction and Maintenance Therapy for Ulcerative Colitis. *N. Engl. J. Med.* 376, 1723–1736. doi:10.1056/NEJMoa1606910
- Sayols, S. (2020). Rvrgo: a Bioconductor Package to Reduce and Visualize Gene Ontology Terms. Available at: <https://ssayols.github.io/rvrgo>.
- Seiler, M., Peng, S., Agrawal, A. A., Palacino, J., Teng, T., Zhu, P., et al. (2018). Somatic Mutational Landscape of Splicing Factor Genes and Their Functional Consequences across 33 Cancer Types. *Cell Rep* 23, 282–296. doi:10.1016/j.celrep.2018.01.088
- Subramanian, A., Tamayo, P., Mootha, V. K., Mukherjee, S., Ebert, B. L., Gillette, M. A., et al. (2005). Gene Set Enrichment Analysis: a Knowledge-Based

- Approach for Interpreting Genome-wide Expression Profiles. *Proc. Natl. Acad. Sci. U S A.* 102, 15545–15550. doi:10.1073/pnas.0506580102
- Subudhi, S. K., Aparicio, A., Gao, J., Zurita, A. J., Araujo, J. C., Logothetis, C. J., et al. (2016). Clonal Expansion of CD8 T Cells in the Systemic Circulation Precedes Development of Ipilimumab-Induced Toxicities. *Proc. Natl. Acad. Sci. U S A.* 113, 11919–11924. doi:10.1073/pnas.1611421113
- Tanaka, I., Morikawa, M., Okuse, T., Shirakawa, M., and Imai, K. (2005). Expression and Regulation of WISP2 in Rheumatoid Arthritic Synovium. *Biochem. Biophys. Res. Commun.* 334, 973–978. doi:10.1016/j.bbrc.2005.06.196
- Van Hasselt, J. G. C., Rahman, R., Hansen, J., Stern, A., Shim, J. V., Xiong, Y., et al. (2020). Transcriptomic Profiling of Human Cardiac Cells Predicts Protein Kinase Inhibitor-Associated Cardiotoxicity. *Nat. Commun.* 11, 4809–4812. doi:10.1038/s41467-020-18396-7
- Wang, D. Y., Salem, J. E., Cohen, J. V., Chandra, S., Menzer, C., Ye, F., et al. (2018). Fatal Toxic Effects Associated with Immune Checkpoint Inhibitors: a Systematic Review and Meta-Analysis. *JAMA Oncol.* 4, 1721–1728. doi:10.1001/jamaoncol.2018.3923
- Wang, D., Yang, L., Zhang, P., Labaer, J., Hermjakob, H., Li, D., et al. (2016). AAgAtlas 1.0: A Human Autoantigen Database. *Nucleic Acids Res.* 45, D769–D776. doi:10.1093/nar/gkw946
- Wu, C., and Ma, S. (2015). A Selective Review of Robust Variable Selection with Applications in Bioinformatics. *Brief Bioinform.* 16, 873–883. doi:10.1093/bib/bbu046
- Xie, C., Mao, X., Huang, J., Ding, Y., Wu, J., Dong, S., et al. (2011). KOBAS 2.0: a Web Server for Annotation and Identification of Enriched Pathways and Diseases. *Nucleic Acids Res.* 39, W316–W322. doi:10.1093/nar/gkr483
- Yang, H., Beutler, B., and Zhang, D. (2021). Emerging Roles of Spliceosome in Cancer and Immunity. *Protein & Cell*, 1–21. doi:10.1007/s13238-021-00856-5
- Yu, G., Wang, L. G., Han, Y., and He, Q. Y. (2012). clusterProfiler: an R Package for Comparing Biological Themes Among Gene Clusters. *OMICS* 16, 284–287. doi:10.1089/omi.2011.0118
- Zhong, L., Wu, Q., Chen, F., Liu, J., and Xie, X. (2021). Immune-related Adverse Events: Promising Predictors for Efficacy of Immune Checkpoint Inhibitors. *Cancer Immunol. Immunother.* 70, 2559–2576. doi:10.1007/s00262-020-02803-5

Conflict of Interest: The authors declare that the research was conducted in the absence of any commercial or financial relationships that could be construed as a potential conflict of interest.

Publisher's Note: All claims expressed in this article are solely those of the authors and do not necessarily represent those of their affiliated organizations, or those of the publisher, the editors and the reviewers. Any product that may be evaluated in this article, or claim that may be made by its manufacturer, is not guaranteed or endorsed by the publisher.

Copyright © 2021 He, Yu and Shi. This is an open-access article distributed under the terms of the Creative Commons Attribution License (CC BY). The use, distribution or reproduction in other forums is permitted, provided the original author(s) and the copyright owner(s) are credited and that the original publication in this journal is cited, in accordance with accepted academic practice. No use, distribution or reproduction is permitted which does not comply with these terms.